

RESEARCH

Open Access



# Ameliorated biomechanical properties of carotid arteries by puerarin in spontaneously hypertensive rats

Fang Xiaoxia<sup>1†</sup>, Dong Sheng<sup>2†</sup>, Wu Yun<sup>2</sup>, He Yun<sup>3</sup>, Lu Min<sup>4</sup>, Shi Dandan<sup>2</sup>, Feng Na<sup>2</sup>, Yin Songhe<sup>1</sup>, Jiang Yan<sup>3</sup>, Zhang Anhua<sup>2</sup>, Ding Yan<sup>4</sup>, Zhang Qiufang<sup>4</sup>, Tang Junming<sup>4</sup>, Zhang Wenjun<sup>3\*</sup> and He Xiju<sup>2,3,4\*</sup>

## Abstract

**Background:** An emerging body of evidence indicates that puerarin (PUE) plays an important role in the treatment of angina pectoris, myocardial ischemia-reperfusion injury, hypertension and other cardiovascular diseases, but how PUE affects the vascular remodeling of hypertensive rats has not been reported yet. This study aimed to investigate the effect and mechanism of PUE on carotid arteries of spontaneously hypertensive rats (SHR) to provide the basis for the clinical application of PUE.

**Methods:** Thirty male SHR and six male Wistar Kyoto rats (WKY) aged 3 months were used in this study, SHR rats were randomly divided into 5 groups, PUE(40 or 80 mg/kg/d, ip) and telmisartan (TELM) (30 mg/kg/d, ig) were administered for 3 months. We use DMT myography pressure-diameter system to investigate biomechanical properties of carotid arteries, 10  $\mu$ M pan-classical transient receptor potential channels (TRPCs) inhibitor SKF96365, 200 nM specific TRPC6 inhibitor SAR7334 and 100  $\mu$ M Orai1 inhibitor ANCOA4 were used in the mechanical test.

**Results:** PUE can significantly decrease systolic and diastolic blood pressure, long-term administration of PUE resulted in a mild reduction of thickness and inner diameter of carotid artery. PUE ameliorate NE-response and vascular remodeling mainly through inhibiting TRPCs channel activities of VSMC.

**Conclusion:** PUE can ameliorate biomechanical remodeling of carotid arteries through inhibiting TRPCs channel activities of VSMC in spontaneously hypertensive rats.

**Keywords:** Hypertension, Puerarin, TRPC, Vascular remodeling, Biomechanical property

## Introduction

Hypertension is a major cardiovascular risk factor and cause of mortality worldwide [1], blood pressure is regulated by a variety of complex neurohumoral and mechanical signals that together determine systemic vascular tone and resistance [2, 3]. The pathogenesis of hypertension

has not yet been completely elucidated; its consensual pathophysiological basis is vascular remodeling. Arterial growth (change in mass) and remodeling (change in structure) in response to altered dynamic mechanical stimuli in hypertension may be more important than previously thought.

Few studies have attempted to quantify in-vivo dynamic mechanical stimuli more broadly as initiators or indicators of arterial disease. Mechanical characterization can be used to test hypertension treatments aimed at reversing mechanical remodeling changes that compromise human health. Large conducting arteries (aorta and carotid artery)

\* Correspondence: [pulushi@126.com](mailto:pulushi@126.com); [hui630@163.com](mailto:hui630@163.com)

<sup>†</sup>Xiaoxia Fang and Sheng Dong contributed equally to this work.

<sup>3</sup>Department of Ultrasound, Taihe Hospital, Hubei University of Medicine, Shiyan 442000, China

<sup>2</sup>Department of Anatomy, Hubei University of Medicine, Shiyan 442000, China

Full list of author information is available at the end of the article



© The Author(s). 2021 **Open Access** This article is licensed under a Creative Commons Attribution 4.0 International License, which permits use, sharing, adaptation, distribution and reproduction in any medium or format, as long as you give appropriate credit to the original author(s) and the source, provide a link to the Creative Commons licence, and indicate if changes were made. The images or other third party material in this article are included in the article's Creative Commons licence, unless indicated otherwise in a credit line to the material. If material is not included in the article's Creative Commons licence and your intended use is not permitted by statutory regulation or exceeds the permitted use, you will need to obtain permission directly from the copyright holder. To view a copy of this licence, visit <http://creativecommons.org/licenses/by/4.0/>. The Creative Commons Public Domain Dedication waiver (<http://creativecommons.org/publicdomain/zero/1.0/>) applies to the data made available in this article, unless otherwise stated in a credit line to the data.

in vertebrates are composed of a specialized extracellular matrix designed to provide pulse dampening and reduce the work performed by the heart. Intra-media thickness of carotid artery is a reliable indicator to reflect the changes of vascular function in clinical studies. When the matrix proteins of carotid arteries are altered in hypertension, the arterial wall can be remodeled, the mechanical properties changed, and leading to subsequent cardiac adaptation.

*Pueraria lobata* is widely known as Gegen (Chinese name) in traditional Chinese medicine, puerarin (PUE) is one of the main active ingredients extracted from the root of *P. lobata*. Its chemical name is 8-C- $\beta$ -D-glucopyranosyl-7,4-hydroxy-isoflavone and has a molecular weight of 416.382. PUE plays an important role in the treatment of angina pectoris, myocardial ischemia-reperfusion injury, hypertension and other cardiovascular diseases [4–6]. So far, anti-inflammatory [7], antioxidative [8] and anti-arrhythmia [9] effects of PUE have been proven. However, the molecular mechanism underlying the antihypertensive effects of PUE is still not well understood. Recently studies have found that PUE could ameliorate pressure overload-induced cardiac hypertrophy in ovariectomized rats through activation of the PPAR $\alpha$ /PGC-1 pathway [10]. The latest research report that PUE exhibit high ACE2-targeting potential, it might be an ideal ponderable drug for COVID-19 through impairing the interaction between S-protein and ACE2 by SPR assays [11], but whether PUE affects the vascular mechanical reconstruction of hypertensive rats has not been reported yet.

The vascular system is a highly dynamic structure that undergoes constant remodeling, physiological as well as maladaptive restructuring processes are associated with altered Ca<sup>2+</sup> homeostasis in both vascular endothelium and smooth muscle. Studies have reported that calcium deposition on arterial elastic fibers also enhances the wall stiffening [12, 13]. PUE also shows acute inhibitory effects on the functional ion channels, such as Na<sup>+</sup> channels [14], inward rectified K<sup>+</sup> channels [15] and LTCC [16] in isolated cardiomyocytes, but the effect of PUE against Ca<sup>2+</sup> influx still remains controversial [17–19]. Our previous study found that PUE could ameliorate the vasorelaxation of mesenteric artery of SHR rats [20]. In this study, we want to make it clear how PUE affect Ca<sup>2+</sup> influx and regulate calcium channels of carotid artery in hypertension.

In the present study, we used DMT Myography pressure-diameter system to probe the effect of PUE on carotid remodeling, and conducted [Ca<sup>2+</sup>]<sub>i</sub>, live-cell fluorescent Ca<sup>2+</sup> imaging, and choose some calcium channel antagonists to study the effects of PUE on TRPCs channels and vascular tension. We found that PUE can decrease systolic and diastolic blood pressure, long-term administration with PUE resulted in a mild

reduction of thickness and inner diameter of carotid artery, PUE can ameliorate NE-response of SHR rats, PUE ameliorate vascular remodeling mainly through inhibiting TRPCs channel activities of vascular smooth muscle cells (VSMC).

## Materials and methods

### Animals and main reagents

Thirty male specific pathogen-free (SPF) SHR and six male WKY rats aged 3 months were purchased from Charles River company, the rats were housed in the SPF Animal Center of Hubei University of Medicine. Animals were kept on a 12 h–12 h light–dark cycle with ad libitum access to food and water. All animal studies were approved by the Animal Care and Utilization Committee of Hubei University of Medicine (approval No. SYXK2016–0031). PUE used for injection (freeze-dried powder, 200 mg/bottle) was provided by Reyang Pharmaceutical Company of China, Telmisartan (TELM I) potassium tablets (100 mg/tablet) were provided by Moshadong Pharmaceutical Company of China. Thirty SHR rats were randomly divided into 5 groups: SHR group (+ Saline); SHR + PUE40 group (PUE 40 mg/kg/d, ip); SHR + PUE80 group (PUE 80 mg/kg/d, ip); SHR + TELMI group (TELM I 30 mg/kg/d, ig). And SHR + PUE + TELMI group (PUE 80 mg/kg, ip + TELMI, 30 mg/kg/d ig). Six WKY rats were taken as the normal control group. Anesthetic procedures were used to ensure that animals not suffer unduly during and after the experimental procedures.

### Blood pressure measurement

Blood pressure of tail arteries were measured at the 0th, 4th, 8th, and 12th week of administration by BP-6 non-invasive blood pressure measuring System (Chengdu Taimeng Technology Company). Blood pressures were needed to be measured three times in a quiet state, systolic blood pressure (SBP) and diastolic blood pressure (DBP) were measured and recorded carefully.

### Ultrasonic test

Ultrasonic test was performed with a Vevo2100 imaging system and a MS250 transducer, which is designed specifically for mice and rats (Visual Sonics). Rats were anesthetized with 2% isoflurane during the ultrasonic test procedure, the diameter and wall thickness of common carotid artery (CCA) were measured during diastole of left ventricle.

### Mechanical test

Pressure myography (DMT 114P, Denmark) is a relatively simple, but sensitive and mechanistically useful technique that can be used to assess the effect of various stimuli on vascular contraction and relaxation, thereby

augmenting our insight into the mechanisms underlying cardiovascular disease. Opened the chest to expose the right and left carotid arteries, carefully separated CCA and remove the fat and connective tissue around it, placed CCA in a microfuge tube filled with PSS pre-cooled at 4 °C with 95% O<sub>2</sub> + 5% CO<sub>2</sub> ventilation. Then CCA were mounted onto two cannulas connected to a pressurized and sealed system which maintained at constant pressure of 60 mmHg. 10<sup>-5</sup> M Norepinephrine (NE) and 10<sup>-5</sup> M acetylcholine (Ach) were used to detect vascular activity, NE was used to test smooth muscle contractility and 10<sup>-5</sup> M sodium nitroprusside (SNP) to test endothelial-independent smooth muscle relaxation. The lumen and outer diameter of CCA were continuously recorded using a video camera, allowing real time quantification of the vasoconstriction and vasorelaxation respectively, incubated CCA with 10 μM SKF96365 (pan-TRPCs inhibitor), 200 nM SAR7334 (specific TRPC6 inhibitor), or 100 μM ANCOA4 (Orai1 inhibitor) for 30 min, then recorded the outer diameter and pressure changes.

#### Histopathological stain

The same location part of carotid arteries of each group were separated and dehydrated, embedded in paraffin, and sliced. HE staining and Masson staining were performed, and the structure changes of CCA were observed under microscope.

#### Ca<sup>2+</sup> imaging experiments

A7R5 cells were incubated with different concentrations of PUE for 24 h before experiment, Fura2-AM was used as the fluorescent indicator for Ca<sup>2+</sup>. For functional studies of cytosolic Ca<sup>2+</sup>, the cells were loaded with 2 μM Fura2-AM for 30 min at room temperature in serum-free medium, After incubation, cells were perfused with Ca<sup>2+</sup>-free HBSS solution of 0.1 μM AngII, Cells were then rapidly switched to 2 mM Ca<sup>2+</sup>- HBSS solution with AngII, Cytosolic Ca<sup>2+</sup> was monitored with Ca<sup>2+</sup>-imaging system (LAMBDA) with an Olympus IX51 inverted fluorescence microscope and Slidebook software, using excitation wavelengths of 340 and 380 nm to detect Fura-2/Fura2-Ca<sup>2+</sup> fluorescence emissions at 510 nm.

#### Intracellular calcium concentration measurement

Intracellular calcium concentration measurement was conducted using fluorescent dye Fluo-3/AM staining. After treatment, A7R5 cells were re-suspended in Fluo-3/AM working solution (5 μM) for 30 min in the dark and washed twice with PBS. After that, cells were incubated in culture medium for another 20 min in dark. Intracellular Ca<sup>2+</sup> influx was taken by fluorescence microscope (Leica Microsystems).

#### Statistical analysis

The data are presented as means ± SD; Statistical analyses were performed by ANOVA followed by Bonferroni corrections for multiple comparisons between groups. Significance was assumed at *p* < 0.05, All statistical analyses were performed using SPSS 18.0 Software (SPSS Inc., Chicago, IL).

#### Results

##### PUE significantly decreased SBP and DBP of SHR rats

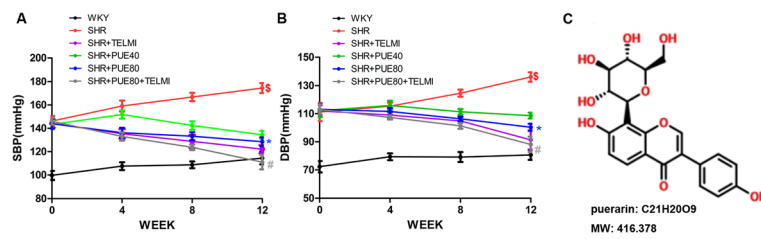
Blood pressure of rat tail arteries were measured on the 0th, 4th, 8th, and 12th week. As shown in Fig. 1, the results showed that the SBP and DBP of SHR group were significantly higher than WKY group (*p* < 0.05), it illustrated that the high blood pressure of SHR rats were induced successfully at the end of 12 weeks. SBP (Fig. 1A) and DBP (Fig. 1B) of SHR + PUE80 group were lower than those of SHR group (*p* < 0.05). Compared to SHR + TELMI group, the SBP and DBP of the SHR + PUE80 + TELMI group also decreased significantly, it showed that combination of TELMI and PUE could obviously decrease SBP and DBP, which suggested PUE and TELMI had a synergistic effect on decreasing blood pressure (*p* < 0.05).

##### PUE obviously decreased thickness and inner diameter of carotid artery

In order to better probe the pathological process of hypertension and the role of PUE, the diameters of CCA were measured by ultrasound. The ultrasound images of CCA at the 12th week were shown in Fig. 2A. Changes of inner diameter of CCA during 12 weeks were shown in Fig. 2B. The histogram analysis illustrated PUE could obviously decrease the thickness and inner diameter at the 12th week in Fig. 2C and D. It suggested long-term administration of PUE could change CCA structure of SHR rats. Studies have reported that TELMI is a peptide angiotensin II receptor antagonist, it can optionally and irreversibly block ATI receptors used in essential hypertension, that was why the inner diameter and thickness were smaller in TELMI-administrated groups.

##### PUE ameliorated morphological disorder and collagen fiber hyperplasia

To observe the morphological abnormalities of CCA in each group, we choose HE and Masson stain. The results showed as in Fig. 3A, compared with WKY group, CCA thickness of SHR group was larger, and vascular smooth muscle cells were arranged in disorder, hypertrophy, and irregular shape, PUE led to a less damaged CCA. Masson stain was helpful to assess the degree of fibrosis, and the results were shown in Fig. 3B, compared with WKY group, the normal red muscle fibers of CCA in SHR group were covered by increased blue-green collagen



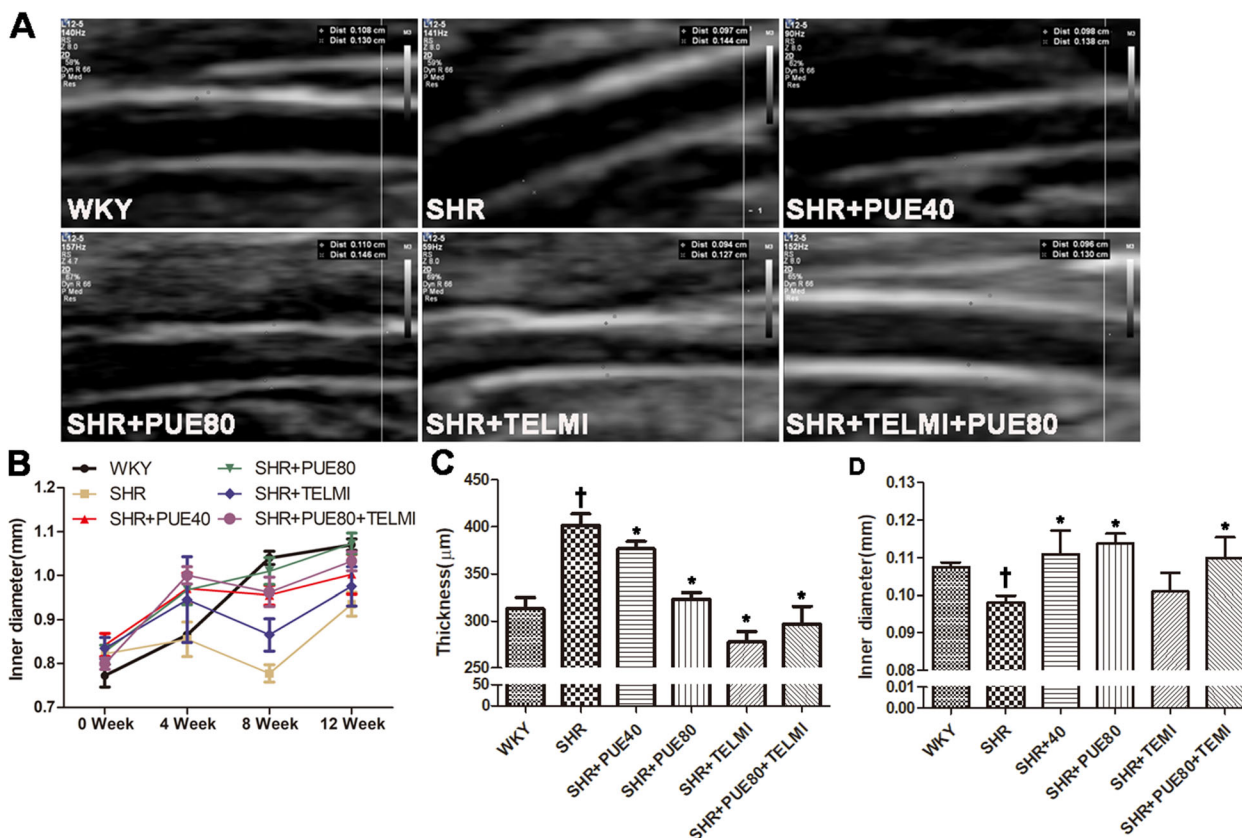
**Fig. 1** PUE significantly decreased SBP and DBP of SHR rats. **A** SBP of SHR group was significantly higher than WKY group, 80 mg/kg/d PUE could decrease SBP of SHR, systolic blood pressure: SBP; **B** DBP of SHR group was higher than WKY group, 80 mg/kg/d PUE could decrease DBP of SHR, diastolic blood pressure: DBP. **C** The chemical structure of puerarin. §  $p < 0.05$  vs WKY; \*  $p < 0.05$  vs SHR; #  $p < 0.05$  vs SHR + TELMI. (Repeated measures ANOVA)

fibers. After PUE intervention, the layer of smooth muscle became thinner, the degree of collagen fiber hyperplasia was reduced.

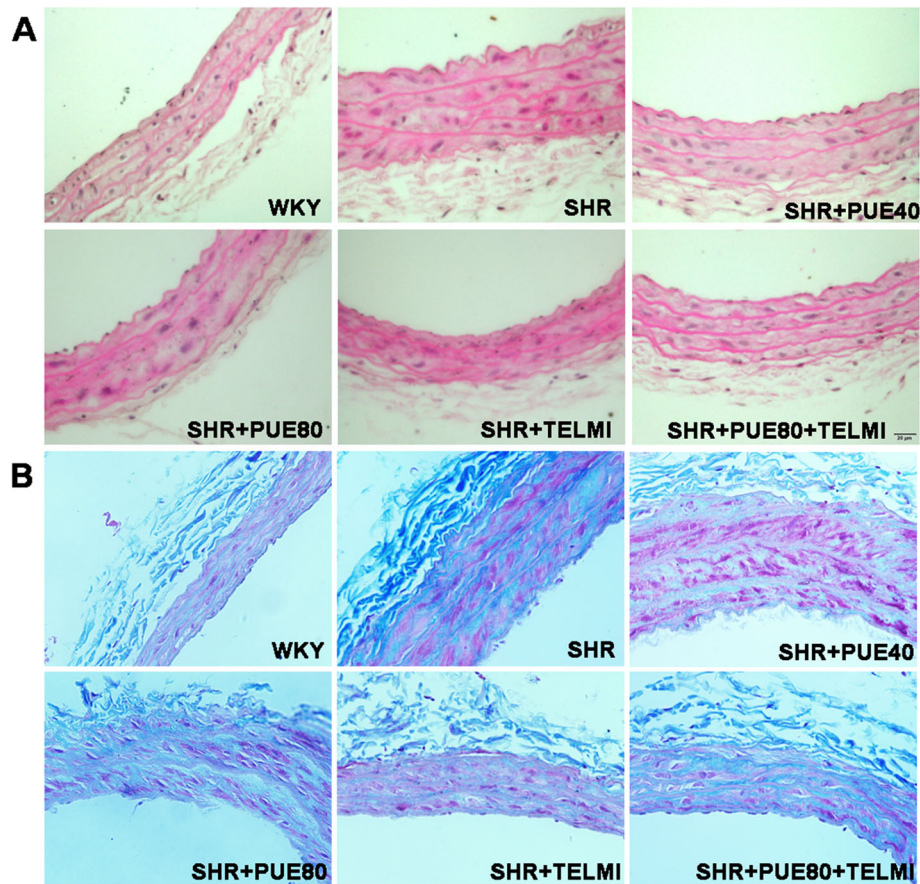
**PUE ameliorated NE-response of SHR rats**

NE is a VSMC-dependent vasoconstrictor mainly acting through the alpha1-adrenoceptors, it was used to test smooth muscle contractility; and SNP is an endothelial cell-independent vasodilator, it was used to test

endothelial-independent smooth relaxation. The vasoconstriction reaction trend to NE was similar in all six groups, arteries from all six groups retained smooth muscle and endothelial function and exhibited a similar partial tone and vasoactive capacity following mechanical testing (Fig. 4A). Following attempted stimulation with NE, there was a near full dilatation back to baseline in response to SNP. NE-response of SHR group was obviously impaired compared to WKY group, and PUE led



**Fig. 2** Effect of PUE in common carotid artery with ultrasound image. **A** A representative ultrasound record of CCA at the end of 12 weeks. **B** Inner diameter changes of CCA with PUE during 0–12 weeks. **C** Histogram analysis of thickness changes of CCA with PUE at the end of 12 weeks. **D** Histogram analysis of inner diameter changes of CCA with PUE at the end of 12 weeks. †  $p < 0.05$  vs WKY, \*  $p < 0.05$  vs SHR. (Repeated measures ANOVA)



**Fig. 3** Effect of PUE on the morphological structure of common carotid artery. **A** Representative H&E-stained histological images of CCA in different groups; thickness of CCA of SHR group was significantly larger, and vascular smooth muscle cells were arranged in disorder, hypertrophy, and irregular in shape compared to WKY group; PUE led to a less damaged CCA. **B** Representative Masson-stained histological images of CCA in different groups. The collagen fibers stained blue-green of SHR group were obviously more than WKY group, and PUE could ameliorate CCA collagen fiber hyperplasia (Scale bar: 100 μm)

a less impaired response. As shown in Fig. 4B, NE-induced constriction of PUE-administrated groups was obviously bigger than SHR group. In Fig. 4C, SNP-induced relaxation was bigger just in the two TELMI groups, it showed TELMI significantly enhanced endothelial-independent smooth vasodilation. There was no significant SNP-induced vasodilation between PUE-administrated group and SHR group. Consistent with the results, the outer diameter just showed the same change in Fig. 4D. All these results suggested that PUE could ameliorate smooth muscle contractility property damaged by high blood pressure.

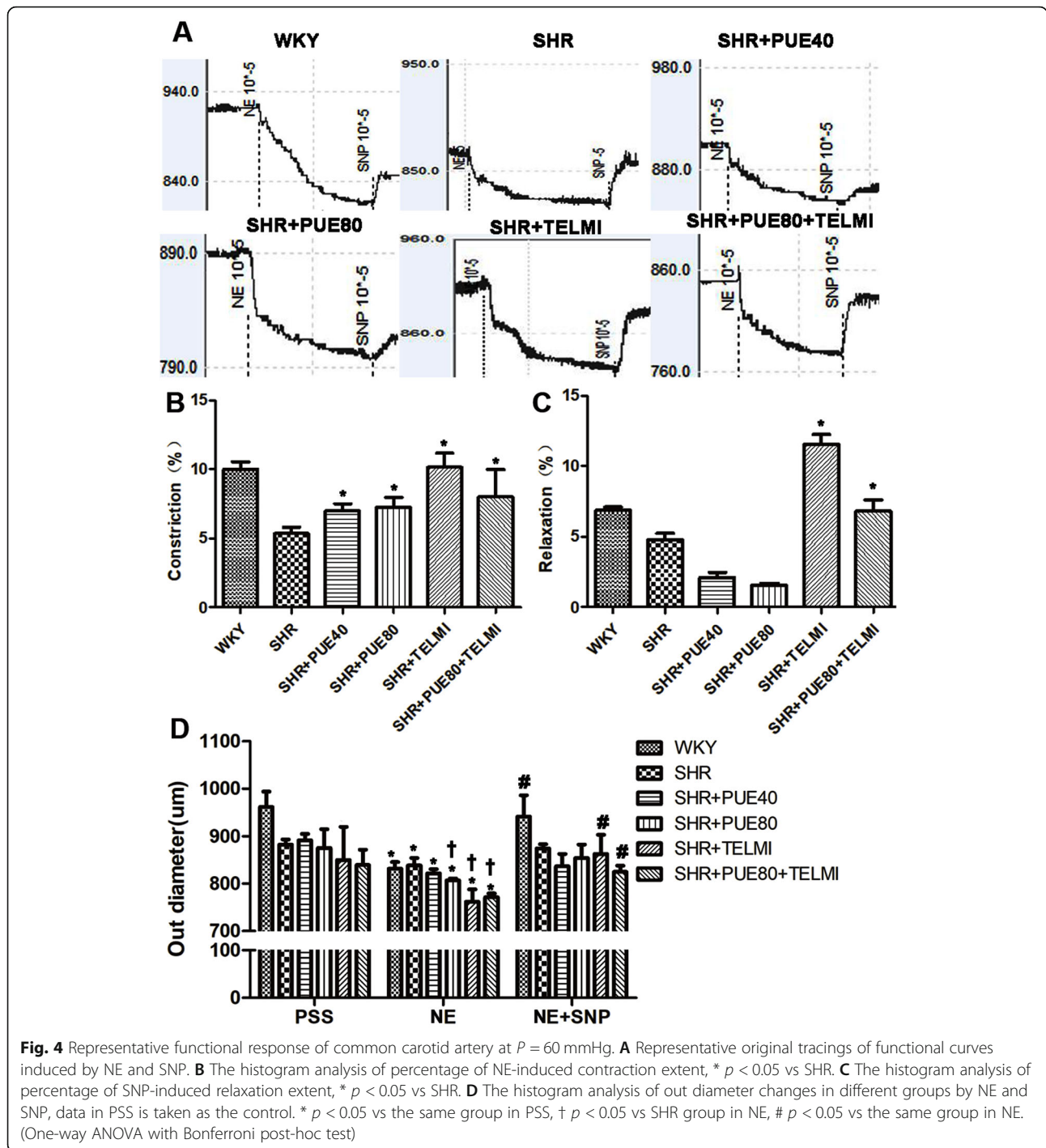
#### PUE partly inhibited NE-induced passive vasoconstriction

Passive mechanical characterization is critical for determining the effects of changes in the matrix composition of large elastic arteries due to development, aging, disease or injury and the subsequent effects on cardiac and cardiovascular function. In our study, NE was given to stimulate the isolated vascular ring to test CCA passive

mechanical characterization of SHR group and SHR + PUE40/80 groups. As shown in Fig. 5A, long-term administration of PUE could reduce passive NE-induced vasoconstriction as calcium concentration increasing. In Fig. 5B, when CCA rings of SHR group were incubated with different concentrations of PUE, the results suggested that  $10^{-3}$  M PUE could obviously inhibit the decreasing of CCA outer diameters.

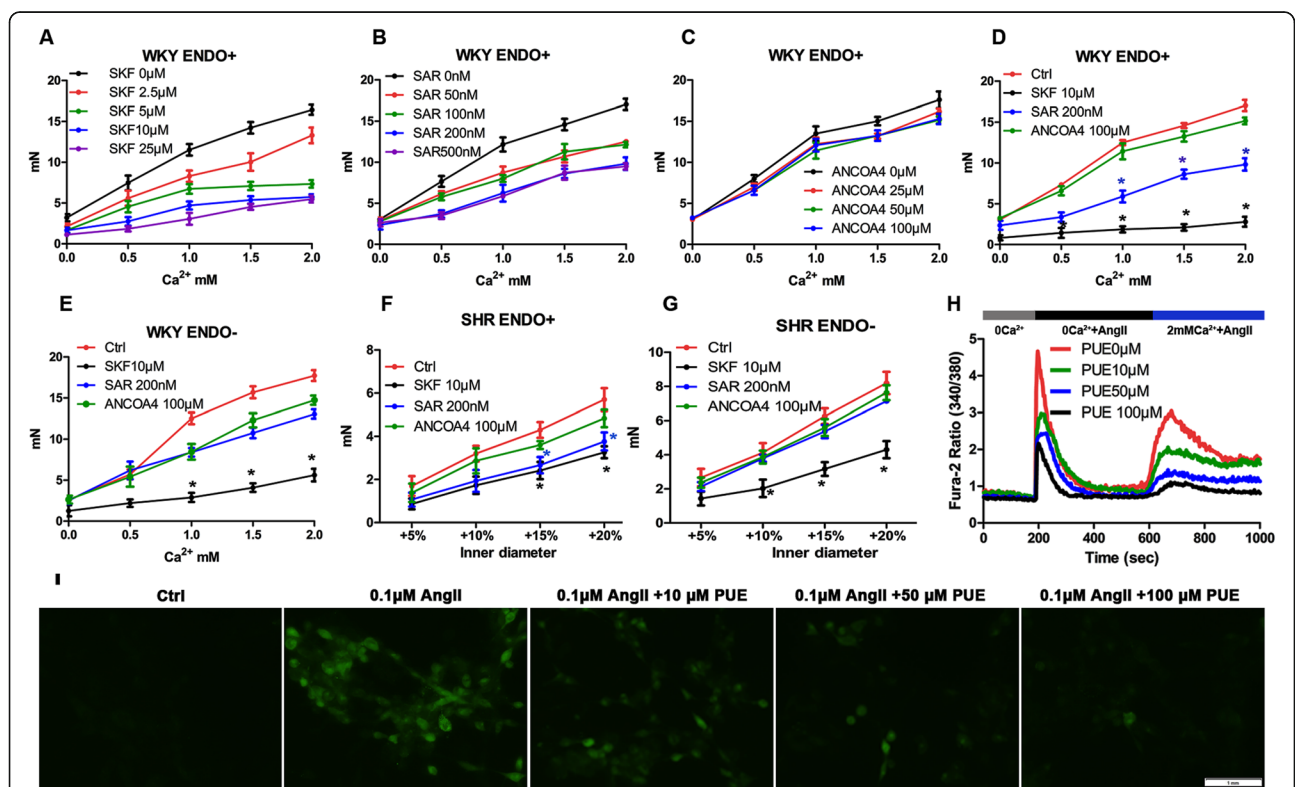
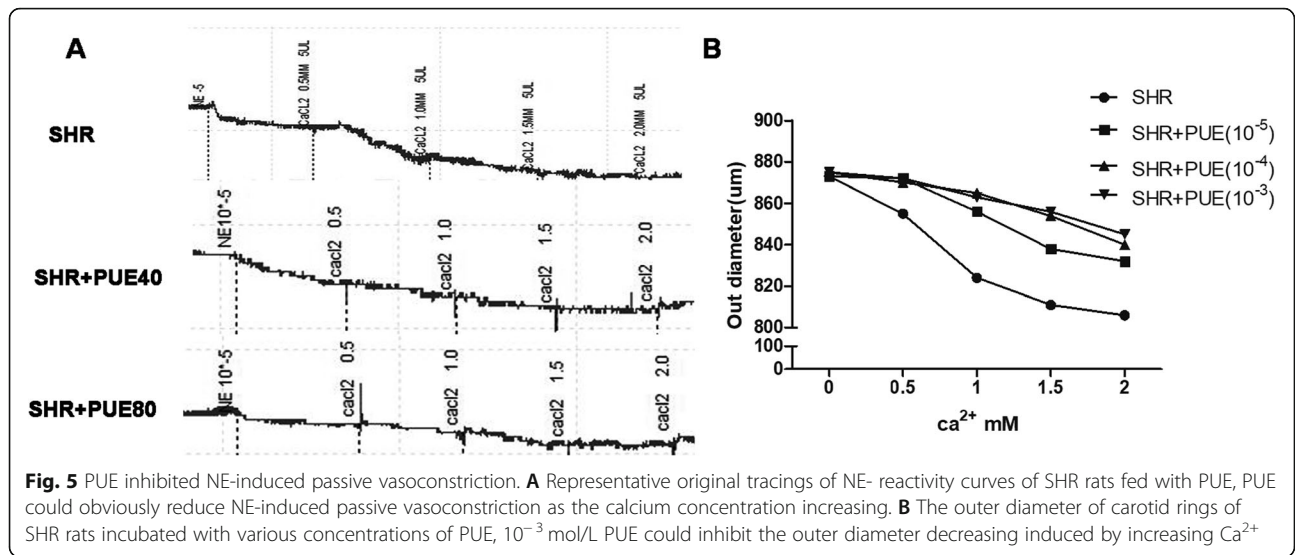
#### The mechanical properties of carotid artery were closely related to TRPCs

Physiological as well as maladaptive restructuring processes are associated with altered  $Ca^{2+}$  homeostasis in both vascular endothelium and smooth muscle. Both TRPC and Orai channels have been recently suggested to control phenotype of vascular cells and therefore to represent attractive novel targets for pharmacological prevention of vascular remodeling and aging [21, 22]. In order to further explore how PUE affects the biomechanical properties of CCA, we first used some



Calcium ion channel inhibitors to gain further insight into the potential protective molecular mechanisms of PUE. We found 10  $\mu$ M SKF could obviously decrease CCA pressure with endothelium compared to the control, and the effect of 10  $\mu$ M SKF just equal to 25  $\mu$ M in Fig. 6A. As shown in Fig. 6B, 200 nM SAR could also obviously decrease CCA pressure with endothelium. Figure 6C showed that CCA pressure

with endothelium has little discernible change although ANCOA4 concentrations varied. So, we choose 10  $\mu$ M SKF, 200 nM SAR and 100  $\mu$ M ANCOA4 in the following experiment. As shown in Fig. 6D, pan-TRPCs inhibitor SKF and specific TRPC6 inhibitor SAR could obviously decrease pressure of WKY rats with intact endothelium, it illustrated some TRPCs channels played pivotal role in maintenance of



mechanical properties. In Fig. 6E, the effect of SKF was still obvious in WKY rats without endothelium, the effect of SAR was not so obvious, so SAR might play roles through vascular endothelium. As shown in Fig. 6F, SKF and SAR could significantly decrease the increasing pressure level of SHR while the inner diameter increasing with intact endothelium, but without endothelium just SKF had obvious effect on decreasing the pressure in Fig. 6G, this further confirmed that some TRPC channels took part in CCA mechanics and remodeling of SHR rats. As shown in Fig. 6H, Ca<sup>2+</sup>-imaging experiment showed that PUE can reduce calcium influx induced by AngII in A7R5 cells. In Fig. 6I, PUE can obviously decrease cytoplasmic Ca<sup>2+</sup> concentration of A7R5 cells induced by AngII.

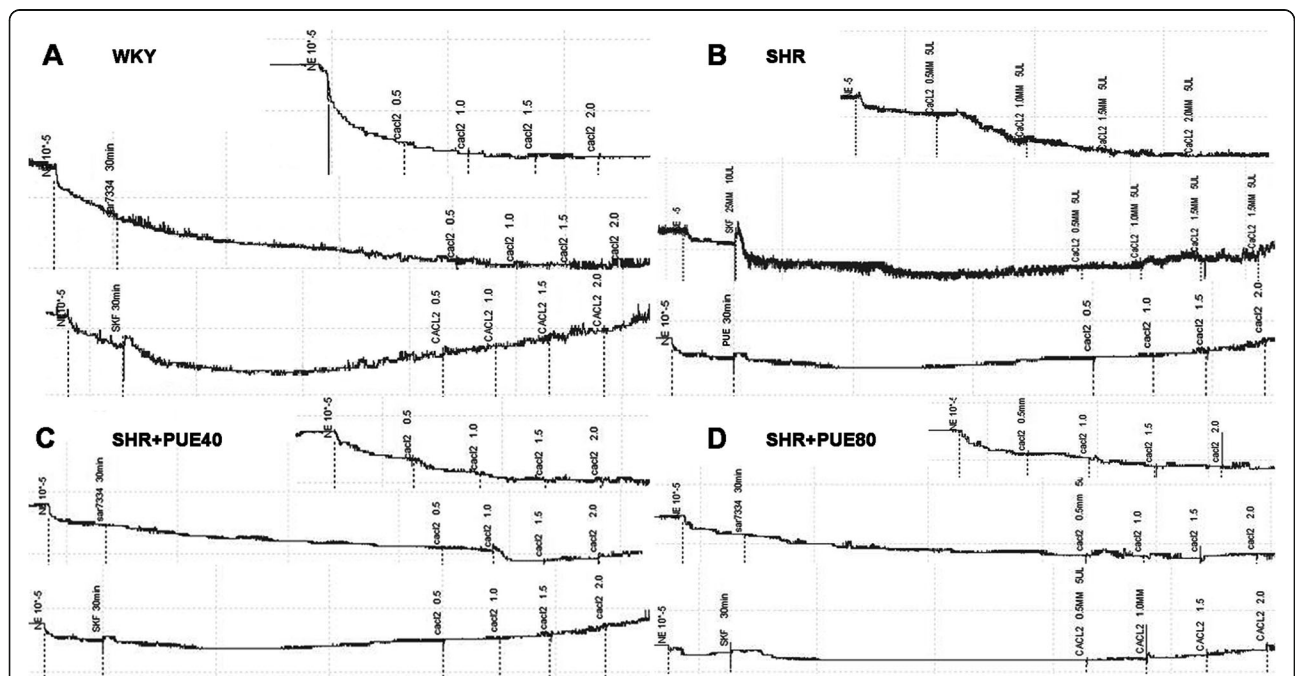
**PUE ameliorated vascular mechanical properties through inhibiting TRPCs channel activities**

Initiation and regulation of vascular smooth muscle contraction involves a unique repertoire of Ca<sup>2+</sup> entry mechanisms [23]. Importantly, the underlying Ca<sup>2+</sup> entry channels comprise both voltage-gated, highly selective channels as well as nonselective cation channels. As shown in Fig. 7A, SKF could partly inhibit the decreasing of outer diameter induced by NE in WKY rats, the effect of SAR was not so obvious as SKF. In order to further

explore the protective effect of PUE, we incubated CCA rings of SHR groups with SKF or PUE for 30 min differently, as shown in Fig. 7B, SKF could significantly inhibit the decreasing of outer diameter, and PUE could take the similar effect as SKF. As shown in Fig. 7C and D, 12 weeks administration of PUE (40 mg/kg/d or 80 mg/kg/d) could reduce the passive NE-induced vasoconstriction, SKF incubated for 30 min had no obvious effect on reducing outer diameter, the reasonable explanation was that long term administration of PUE had decreased the expression of TRPCs channel, or PUE had directly inhibited some TRPCs channels, including TRPC6.

**Discussion**

In the present study, we showed that PUE could significantly decrease SBP and DBP, obviously decrease thickness and inner diameter of CCA, the explanation is the apparently stiffer behaviors of the arteries in terms of a phenotypic modulation of VSMCs from more of a contractile to more of a synthetic phenotype. Arteries from all six groups retained smooth muscle and endothelial function and exhibited a similar partial tone and vasoactive capacity following mechanical test. Vascular agonists and Ca<sup>2+</sup> channel antagonists were applied outside of the pressurized artery(extraluminally), which is more representative of vasodilatory mediators released from surrounding tissue and/or parasympathetic or



**Fig. 7** PUE ameliorated Ca<sup>2+</sup>-induced constriction with the similar role as SKF. **A** Representative original tracings of NE-reactivity curves of WKY rats, SKF could obviously inhibit the decrease of outer diameter of carotid rings induced by increasing extracellular Ca<sup>2+</sup>. **B** Representative original tracings of NE-reactivity curves of SHR rats incubated with 10<sup>-3</sup> M PUE, PUE played the similar role as SKF. **C** Representative original tracings of NE-reactivity curves of SHR fed with 40 mg/kg/d of PUE. **D** Representative original tracings of NE-reactivity curves of SHR fed with 80 mg/kg/d of PUE; SKF has no obvious effect on inhibition the outer diameter decrease induced by increasing extracellular Ca<sup>2+</sup>



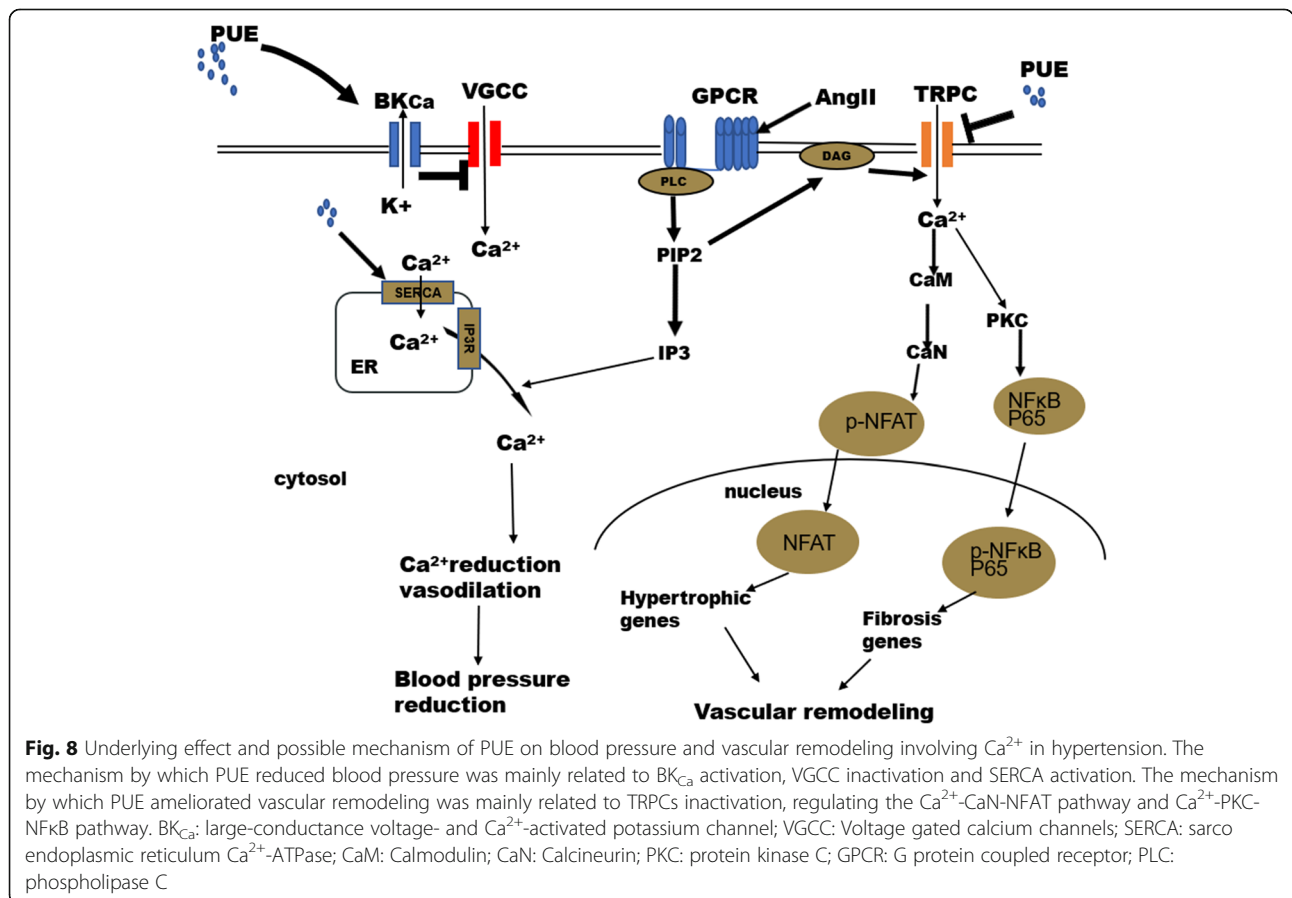
sympathetic innervation of vascular smooth muscle cells, allowing interaction with endothelium indirectly. This is a more physiological method of measuring the vascular endothelial independent reaction of vascular smooth muscle cells, not the circulating or endothelium-derived vasodilators.

PUE affects multiple signaling molecules including the inhibition of oxidative stress, and the NFκB and MAPK activation in vasculature and heart, which may contribute to its suppression of hypertension-induced cardiac hypertrophy and remodeling and improvement of vascular function [24–26]. PUE produced vasodilation via an endothelium-dependent mechanism involving NO [27–31] and an endothelium-independent pathway mediated by the opening of K<sup>+</sup> channels in arteries [15, 32–34]. Vascular smooth muscle contraction is initiated by both calcium-dependent and -independent mechanisms, the structure and functional abnormal of calcium channels may lead to the occurrence and development of hypertension [35, 36], but the effect of PUE on Ca<sup>2+</sup> have no consensus yet.

As shown in our studies, the reactivity of Ca<sup>2+</sup>-induced vasoconstriction is impaired in SHR rats, PUE can rescue this condition. Calcium imaging of A7R5

cells also illustrated that PUE could decrease the Ang II-induced Ca<sup>2+</sup> influx. But the regulation role of PUE against Ca<sup>2+</sup> influx still remains controversial, some reports confirmed that long-term PUE treatment enhances Ca<sup>2+</sup> reuptake and Ca<sup>2+</sup> content via upregulation of SERCA2a of murine embryonic stem cell-derived cardiomyocytes [17], and PUE restrained Ca<sup>2+</sup> influx and reduced [Ca<sup>2+</sup>]<sub>i</sub> in daunorubicin-incubated H9c2 cells [18], another study reported PUE induced the [Ca<sup>2+</sup>]<sub>i</sub> increase by evoking phospholipase C-independent Ca<sup>2+</sup> release from the endoplasmic reticulum and other unknown stores in MDCK and renal tubular cells [19]. Our experiment supplements the evidence that PUE can decrease calcium influx induced by Ang II.

Ca<sup>2+</sup> entry from voltage-gated Ca<sup>2+</sup> channels are mainly responsible for excitation-contraction coupling, non-voltage-dependent Ca<sup>2+</sup> entry channels such as Orai, STIM, and TRPCs functions have been linked to physiological downstream pathways that are essential for vascular remodeling [37–39]. Membrane proteins of the TRPC family have been recognized as pivotal elements of Ca<sup>2+</sup> transcription coupling [40] and demonstrated to control phenotype transitions, proliferation, and



**Fig. 8** Underlying effect and possible mechanism of PUE on blood pressure and vascular remodeling involving Ca<sup>2+</sup> in hypertension. The mechanism by which PUE reduced blood pressure was mainly related to BK<sub>Ca</sub> activation, VGCC inactivation and SERCA activation. The mechanism by which PUE ameliorated vascular remodeling was mainly related to TRPCs inactivation, regulating the Ca<sup>2+</sup>-CaN-NFAT pathway and Ca<sup>2+</sup>-PKC-NFκB pathway. BK<sub>Ca</sub>: large-conductance voltage- and Ca<sup>2+</sup>-activated potassium channel; VGCC: Voltage gated calcium channels; SERCA: sarco endoplasmic reticulum Ca<sup>2+</sup>-ATPase; CaM: Calmodulin; CaN: Calcineurin; PKC: protein kinase C; GPCR: G protein coupled receptor; PLC: phospholipase C

differentiation in smooth muscle and endothelium [41].  $Ca^{2+}$  signaling mediated by TRPC channels determines initiation and progress of vascular remodeling via signaling processes that govern transcriptional programs and phenotype transitions [42–44]. Similarly to the endothelium, all members, except TRPC2, of all the TRPC subfamily have been detected in human vasculature by PCR, Western Blot, and/or immunofluorescence analysis [45, 46]. Most studies focusing on TRPCs function and distribution in terms of VSMC remodeling revealed an increased expression of these ion channels in proliferating VSMC of diverse disease models [47–49].

As shown in our studies, in SHR rats, SKF96365 and SAR7334 could decrease the increasing level of pressure with intact endothelium, just SKF96365 had obvious change on decreasing the CCA pressure without endothelium, this further confirmed that some TRPC channels took part in the mechanics and remodeling of CCA of SHR rats via VSMC. As shown in Fig. 7B, SKF could significantly inhibit the decreasing of outer diameter of SHR rats, PUE could take the similar effect as SKF. While 12 weeks administration of PUE (40 mg/kg/d or 80 mg/kg/d) could reduce the passive NE-induced vasoconstriction, and SKF had no effect in these two PUE administration groups, the reasonable explanation was that PUE ameliorated  $Ca^{2+}$ -induced constriction with the similar role as SKF, long term administration of PUE has decreased the expression of some TRPCs channel, or PUE has directly inhibited some TRPCs channels including TRPC6, but which specific TRPC channel PUE acts on remains to be further explored.

Here, just to summarize the underlying effect and possible mechanism of PUE on blood pressure and vascular remodeling involving  $Ca^{2+}$  in hypertension. As shown in Fig. 8, the mechanism by which PUE reduced blood pressure was mainly related to  $BK_{Ca}$  activation. PUE activated  $BK_{Ca}$  channels, then leads to hyperpolarization of the cell membrane, which causes deactivation of voltage-dependent calcium channels and vasodilation [15, 34], SERCA activation caused by PUE can also lead to vasodilation [17, 18]. We postulated that long time administration of PUE ameliorated vascular remodeling was mainly related to TRPCs inactivation, which reduced calcium overload induced by angiotensin II, Calcium influx through TRPC channels were reduced, which regulating the  $Ca^{2+}$ -CaN-NFAT pathway [39, 46–49] and  $Ca^{2+}$ -PKC-NF $\kappa$ B pathway [24, 26], thus influence the vascular remodeling.

All the above-mentioned findings indicate that PUE represents a potential antihypertensive agent, it reduces the blood pressure of SHR rats. PUE can also set off a chain of events and ultimately improves the mechanical properties and remodelings of CCA via blocking TRPCs. But in our study, the specific molecular target of PUE

acts on and how PUE affect TRPCs should be assessed in follow-up work. Our findings raise some interesting additional questions about PUE that need to be answered.

### Supplementary Information

The online version contains supplementary material available at <https://doi.org/10.1186/s12906-021-03345-8>.

#### Additional file 1.

### Acknowledgements

We must thank Hubei Key Laboratory of Embryonic Stem Cell Research for providing us with the platform and technology.

### Authors' contributions

XF, SD and YW contributed to the drug delivery work; YH, SY and YJ contributed to the echocardiography; AZ, ML and YD contributed to measuring blood pressure; DS, NF and QZ contributed to the mechanical test; and JT contributed to paper revise; WZ and XH contributed to the manuscript writing. All the authors read and approved the final manuscript.

### Funding

This study was supported by grants from the National Natural Science Foundation of China (No. 81800266) and Cultivating Project for Young Scholars at Hubei University of Medicine (No. 2017QDJZR04).

### Availability of data and materials

All data is contained within the manuscript.

### Declarations

#### Ethics approval and consent to participate

All methods were performed in accordance with the relevant guidelines and regulations. Animal breeding, handling and drug delivery protocols were reviewed, approved and monitored by the Animal Care and Use Committee of Hubei University of Medicine. The study was carried out in compliance with the ARRIVE guidelines.

#### Consent for publication

All authors of this paper are in agreement with the manuscript publication.

#### Competing interests

The authors declare that they have no competing interest.

#### Author details

<sup>1</sup>Department of Neurology, Taihe Hospital, Hubei University of Medicine, Shiyan 442000, China. <sup>2</sup>Department of Anatomy, Hubei University of Medicine, Shiyan 442000, China. <sup>3</sup>Department of Ultrasound, Taihe Hospital, Hubei University of Medicine, Shiyan 442000, China. <sup>4</sup>Hubei Key Laboratory of Embryonic Stem Cell Research, Hubei University of Medicine, Shiyan 442000, China.

Received: 8 March 2021 Accepted: 2 June 2021

Published online: 22 June 2021

### References

1. Chockalingam A, Campbell NR, Fodor JG. Worldwide epidemic of hypertension. *Can J Cardiol*. 2006;22(7):553–5. [https://doi.org/10.1016/S0828-282X\(06\)70275-6](https://doi.org/10.1016/S0828-282X(06)70275-6).
2. Somlyo AP, Somlyo AV. Signal transduction and regulation in smooth muscle. *Nature*. 1994;372(17):231–6. <https://doi.org/10.1038/372231a0>.
3. Davis MJ, Hill MA. Signaling mechanisms underlying the vascular myogenic response. *Physiol Rev*. 1999;79(2):387–423. <https://doi.org/10.1152/physrev.1999.79.2.387>.
4. Hu W, Zhang Q, Yang X, Wang Y, Sun L. Puerarin inhibits C-reactive protein expression via suppression of nuclear factor kappaB activation in

- lipopolysaccharide-induced peripheral blood mononuclear cells of patients with stable angina pectoris. *Basic Clin Pharmacol Toxicol.* 2010;107:637–42.
5. Tan CX, Wang AM, Liu C, Li Y, Shi YP, Zhou MS. Puerarin improves vascular insulin resistance and cardiovascular remodeling in salt-sensitive hypertension. *Am J Chin Med.* 2017;45(06):1169–84. <https://doi.org/10.1142/S0192415X17500641>.
  6. Guo BQ, Xu JB, Xiao M, Ding M, Duan LJ. Puerarin reduces ischemia/reperfusion-induced myocardial injury in diabetic rats via upregulation of vascular endothelial growth factor  $\alpha$ /angiotensin-1 and suppression of apoptosis. *Mol Med Rep.* 2018;17(5):7421–7. <https://doi.org/10.3892/mmr.2018.8754>.
  7. Kim KM, Jung DH, Jang DS, Kim YS, Kim JM, Kim HN, et al. Puerarin suppresses AGEs-induced inflammation in mouse mesangial cells: a possible pathway through the induction of heme oxygenase-1 expression. *Toxicol Appl Pharmacol.* 2010;244(2):106–13. <https://doi.org/10.1016/j.taap.2009.12.023>.
  8. Gang C, Qiang C, Xiangli C, Shifen P, Chong S, Lihong L. Puerarin suppresses angiotensin II-induced cardiac hypertrophy by inhibiting NADPH oxidase activation and oxidative stress-triggered AP-1 signaling pathways. *J Pharm Pharm Sci.* 2015;18(2):235–48. <https://doi.org/10.18433/J3N318>.
  9. Rodebaugh J, Sekulic M, Davies W, Montgomery S, Khraibi A, Solhaug MJ, et al. Neuronal nitric oxide synthase, nNOS, regulates renal hemodynamics in the postnatal developing piglet. *Pediatr Res.* 2012;71(2):144–9. <https://doi.org/10.1038/pr.2011.23>.
  10. Hou N, Huang Y, Cai SA, Yuan WC, Li LR, Liu XW, et al. Puerarin ameliorated pressure overload-induced cardiac hypertrophy in Ovariectomized rats through activation of the PPAR $\alpha$ /PGC-1 pathway. *Acta Pharmacol Sin.* 2021; 42(1):55–67. <https://doi.org/10.1038/s41401-020-0401-y>.
  11. Pan B, Fang S, Zhang J, Pan Y, Liu H, Wang Y, et al. Chinese herbal compounds against SARS-CoV-2: Puerarin and Quercetin impair the binding of viral S-protein to ACE2 receptor. *Comput Struct Biotechnol J.* 2020;18: 3518–27. <https://doi.org/10.1016/j.csbj.2020.11.010>.
  12. Robert L. Aging of the Vascular-Wall and atherosclerosis. *Exp Gerontol.* 1999; 34(4):491–501. [https://doi.org/10.1016/S0531-5565\(99\)00030-3](https://doi.org/10.1016/S0531-5565(99)00030-3).
  13. Laurent S, Lacolley P, Girerd X, Boutouyrie P, Bezie Y, Safar M. Arterial stiffening: opposing effects of age- and hypertension-associated structural changes. *Can J Physiol Pharmacol.* 1996;74(7):842–9. <https://doi.org/10.1139/y96-075>.
  14. Zhang GQ, Hao XM, Dai DZ, Fu Y, Zhou PA, Wu CH. Puerarin blocks Na<sup>+</sup> current in rat ventricular myocytes. *Acta Pharmacol Sin.* 2003;24(12):1212–6.
  15. Sun XH, Ding JP, Li H, Pan N, Gan L, Yang XL, et al. Activation of large-conductance calcium-activated potassium channels by puerarin: the underlying mechanism of puerarin-mediated vasodilation. *J Pharmacol Exp Ther.* 2007;323(1):391–7. <https://doi.org/10.1124/jpet.107.125567>.
  16. Guo XG, Chen JZ, Zhang X, Xia Q. Effect of puerarin on L-type calcium channel in isolated rat ventricular myocytes. *Zhongguo Zhong Yao Za Zhi.* 2004;29(3):248–51.
  17. Wang L, Cui Y, Liu Q, Song Y, Hu Q, Tang M, et al. Puerarin enhances Ca<sup>2+</sup> reuptake and Ca<sup>2+</sup> content of sarcoplasmic reticulum in murine embryonic stem cell-derived Cardiomyocytes via upregulation of SERCA2a. *Cell Physiol Biochem.* 2017;44(3):1199–212. <https://doi.org/10.1159/000485450>.
  18. Li W, Lu M, Zhang Y, Xia D, Chen Z, Wang L, et al. Puerarin attenuates the daunorubicin induced apoptosis of H9c2 cells by activating the PI3K/Akt signaling pathway via the inhibition of Ca<sup>2+</sup> influx. *Int J Mol Med.* 2017; 40(6):1889–94. <https://doi.org/10.3892/ijmm.2017.3186>.
  19. Cheng H, Chou C, Liang W, Kuo C, Shieh P, Wang J, et al. Effects of puerarin on intracellular Ca<sup>2+</sup> and cell viability of MDCK renal tubular cells. *Environ Toxicol Pharmacol.* 2017;52:83–9.
  20. Wu Y, Xu YF, He XJ, Zhang WJ, He Y, Jian MC, et al. Effect of puerarin on relaxation of mesenteric artery in spontaneously hypertensive rats. *Chin J Clin Anat.* 2019;37:142–7.
  21. Yang B, Gwozdz T, Dutko-Gwozdz J, Bolotina VM. Orai1 and Ca<sup>2+</sup>-independent phospholipase A2 are required for store-operated Icat-SOC current, Ca<sup>2+</sup> entry, and proliferation of primary vascular smooth muscle cells. *Am J Physiol Cell Physiol.* 2012;302(5):C748–56. <https://doi.org/10.1152/ajpcell.00312.2011>.
  22. Wang Y, Deng X, Hewavitharana T, Soboloff J, Gill DL. Stim, ORAI and TRPC channels in the control of calcium entry signals in smooth muscle. *Clin Exp Pharmacol Physiol.* 2008;35(9):1127–33. <https://doi.org/10.1111/j.1440-1681.2008.05018.x>.
  23. Wamhoff BR, Bowles DK, Owens GK, Owens. Excitation–transcription coupling in arterial smooth muscle. *Circ Res.* 2006;98(7):868–78. <https://doi.org/10.1161/01.RES.0000216596.73005.3c>.
  24. Chen G, Pan SQ, Shen C, Pan SF, Zhang XM, He QY. Puerarin inhibits angiotensin II-induced cardiac hypertrophy via the redox-sensitive ERK1/2, p38 and NF- $\kappa$ B pathways. *Acta Pharmacol Sin.* 2014;35:463–75.
  25. Yuan Y, Zong J, Zhou H, Bian ZY, Deng W, Dai J, et al. Puerarin attenuates pressure overload-induced cardiac hypertrophy. *J Cardiol.* 2014;63:73–81.
  26. Tao Z, Ge Y, Zhou N, Wang Y, Cheng W, Yang Z. Puerarin inhibits cardiac fibrosis via monocyte chemoattractant protein (MCP)-1 and the transforming growth factor- $\beta$ 1 (TGF- $\beta$ 1) pathway in myocardial infarction mice. *Am J Transl Res.* 2016;8(10):4425–33.
  27. Meng XH, Ni C, Zhu L, Shen YL, Wang LL, Chen YY. Puerarin protects against high glucose-induced acute vascular dysfunction: role of heme oxygenase-1 in rat thoracic aorta. *Vasc Pharmacol.* 2009;50:110–5.
  28. Shi W, Yuan R, Chen X. Puerarin reduces blood pressure in spontaneously hypertensive rats by targeting eNOS. *Am J Chin Med.* 2019;47(1):1–20.
  29. Ma JJ, Ma H, Wang YM, Li HM, Pei JM. Vasodilation effect of puerarin on abdominal aortic artery in the rat and the underlying mechanism. *Disi Junyi Daxue Xuebao.* 2003;24:2231–4.
  30. Yeung DK, Leung SW, Xu YC, Vanhoutte PM, Man RY. Puerarin, an isoflavonoid derived from radix puerariae, potentiates endothelium-independent relaxation via the cyclic AMP pathway in porcine coronary artery. *Eur J Pharmacol.* 2006; 552(1–3):105–11. <https://doi.org/10.1016/j.ejphar.2006.08.078>.
  31. Gheibi S, S Jeddi, K Kashfi and a Ghasemi. Regulation of vascular tone homeostasis by NO and H2S: implications in hypertension. *Biochem Pharmacol.* 2018;149:42–59.
  32. Dong K, Tao QM, Shan QX, Jin HF, Pan GB, Chen JZ, et al. Endothelium-independent vasorelaxant effect of puerarin on rat thoracic aorta. *Conf Proc IEEE Eng Med Biol Soc.* 2004;4:3757–60. <https://doi.org/10.1109/EMBS.2004.1404054>.
  33. Deng Y, Ng ES, Yeung JH, Kwan YW, Lau CB, Koon JC, et al. Mechanisms of the cerebral vasodilator actions of isoflavonoids of Gegen on rat isolated basilar artery. *J Ethnopharmacol.* 2012;139(1):294–304. <https://doi.org/10.1016/j.jep.2011.11.021>.
  34. Fusi F, Trezza A, Tramaglino M, Sgaragli G, Saponara S, Spiga O. The beneficial health effects of flavonoids on the cardiovascular system: focus on K<sup>+</sup> channels. *Pharmacol Res.* 2020;2(152):104625. <https://doi.org/10.1016/j.phrs.2019.104625>.
  35. González-Cobos JC, Zhang X, Zhang W, Rühle B, Motiani RK, Schindl R, et al. Store-independent Orai1/3 channels activated by Intracrine leukotriene C4: role in Neointimal hyperplasia. *Circ Res.* 2013;112(7):1013–25. <https://doi.org/10.1161/CIRCRESAHA.111.300220>.
  36. Tanwar J, Trebak M, Motiani RK. Cardiovascular and hemostatic disorders: role of STIM and Orai proteins in vascular disorders. *Adv Exp Med Biol.* 2017; 993:425–52. [https://doi.org/10.1007/978-3-319-57732-6\\_22](https://doi.org/10.1007/978-3-319-57732-6_22).
  37. Aubart FC, Sassi Y, Coulombet A, Mougnot N, Vrignaud C, Leprince P, et al. RNA interference targeting STIM1 suppresses vascular smooth muscle cell proliferation and neointima formation in the rat. *Mol Ther.* 2009;17(3):455–62. <https://doi.org/10.1038/mt.2008.291>.
  38. Baryshnikov SG, Pulina MV, Zulia A, Linde CI, Golovina VA. Orai1, a critical component of store-operated Ca<sup>2+</sup> entry, is functionally associated with Na<sup>+</sup>/Ca<sup>2+</sup> exchanger and plasma membrane Ca<sup>2+</sup> pump in proliferating human arterial myocytes. *Am J Physiol Cell Physiol.* 2009;297(5):C1103–12. <https://doi.org/10.1152/ajpcell.00283.2009>.
  39. Wang C, Li JF, Zhao L, Liu J, Wan J, Wang YX, et al. Inhibition of SOC/Ca<sup>2+</sup>/NFAT pathway is involved in the anti-proliferative effect of sildenafil on pulmonary artery smooth muscle cells. *Respir Res.* 2009;10(1):123. <https://doi.org/10.1186/1465-9921-10-123>.
  40. Trebak M. STIM/Orai Signalling complexes in vascular smooth muscle. *J Physiol.* 2012;590(17):4201–8. <https://doi.org/10.1113/jphysiol.2012.233353>.
  41. Dietrich A, Kalwa H, Gudermann T. TRPC channels in vascular cell function. *Thromb Haemost.* 2010;103(2):262–70. <https://doi.org/10.1160/TH09-08-0517>.
  42. Beech DJ. Orai1 calcium channels in the vasculature. *Pflugers Arch.* 2012; 463(5):635–47. <https://doi.org/10.1007/s00424-012-1090-2>.
  43. Zhang W, Halligan KE, Zhang X, Bisailon JM, Gonzalez-Cobos JC, Motiani RK, et al. Orai1-mediated I (CRAC) is essential for neointima formation after vascular injury. *Circ Res.* 2011;109(5):534–42. <https://doi.org/10.1161/CIRCRESAHA.111.246777>.
  44. Zhu JH, Chen CL, Flavahan S, Harr J, Su B, Flavahan NA. Cyclic stretch stimulates vascular smooth muscle cell alignment by redox-dependent activation of Notch3. *Am J Physiol Heart Circ Physiol.* 2011;300(5):H1770–80. <https://doi.org/10.1152/ajpheart.00535.2010>.
  45. Guibert C, Ducret T, Savineau JP. Expression and physiological roles of TRP channels in smooth muscle cells. *Adv Exp Med Biol.* 2011;704:687–706. [https://doi.org/10.1007/978-94-007-0265-3\\_36](https://doi.org/10.1007/978-94-007-0265-3_36).

46. Dietrich A, Chubanov V, Kalwa H, Rost BR, Gudermann T. Cation channels of the transient receptor potential superfamily: their role in physiological and pathophysiological processes of smooth muscle cells. *Pharmacol Ther.* 2006; 112(3):744–60. <https://doi.org/10.1016/j.pharmthera.2006.05.013>.
47. Imai Y, Itsuki K, Okamura Y, Inoue R, Mori MX. A self-limiting regulation of vasoconstrictor-activated TRPC3/C6/C7 channels coupled to PI(4,5)P(2)-diacylglycerol signalling. *J Physiol.* 2012;590(Pt 5):1101–19. <https://doi.org/10.1113/jphysiol.2011.221358>.
48. Ju M, Shi J, Saleh SN, Albert AP, Large WA. Ins(1,4,5)P3 interacts with PIP2 to regulate activation of TRPC6/C7 channels by diacylglycerol in native vascular myocytes. *J Physiol.* 2010;588(Pt 9):1419–33. <https://doi.org/10.1113/jphysiol.2009.185256>.
49. Maruyama Y, Nakanishi Y, Walsh EJ, Wilson DP, Welsh DG, Cole WC. Hetero multimeric TRPC6-TRPC7 channels contribute to arginine vasopressin-induced cation current of A7r5 vascular smooth muscle cells. *Circ Res.* 2006; 98(12):1520–7. <https://doi.org/10.1161/01.RES.0000226495.34949.28>.

### Publisher's Note

Springer Nature remains neutral with regard to jurisdictional claims in published maps and institutional affiliations.

**Ready to submit your research? Choose BMC and benefit from:**

- fast, convenient online submission
- thorough peer review by experienced researchers in your field
- rapid publication on acceptance
- support for research data, including large and complex data types
- gold Open Access which fosters wider collaboration and increased citations
- maximum visibility for your research: over 100M website views per year

**At BMC, research is always in progress.**

Learn more [biomedcentral.com/submissions](https://biomedcentral.com/submissions)

