


GSTT1 Null Genotype and Susceptibility to Children Acute Leukemia in Chinese Population: Evidence from a Meta-Analysis

Technology in Cancer Research & Treatment
Volume 18: 1-5
© The Author(s) 2019
Article reuse guidelines:
sagepub.com/journals-permissions
DOI: 10.1177/1533033819867361
journals.sagepub.com/home/tct


De-qiang Ma, MD¹ 

Abstract

Objectives: Increasing number of studies has focused on studying the relationship between glutathione S-transferase T1 polymorphism and children acute leukemia, among which discrepancies have risen. The aim of this study is to provide a more exact assessment of glutathione S-transferase T1 polymorphism and children acute leukemia among certain Chinese population. **Methods:** Studies were identified using PubMed, Springer Link, Ovid, Chinese Wanfang Data Knowledge Service Platform, Chinese National Knowledge Infrastructure and Chinese Biology Medicine from beginning to July 2018. The strength of association was quantified by pooling odds ratios and 95% confidence intervals using fixed-effect or random-effect model according to the heterogeneity. **Results:** Overall, a positive relationship was found in null genotype of glutathione S-transferase T1 polymorphism on the risk of childhood acute leukemia among all Chinese populations (odds ratios: 1.52; 95% confidence intervals = 1.19-1.94). Similarly, consistent results were found in subgroup of Southern China (odds ratios: 1.48; 95% confidence intervals: 1.08-2.02), Northern China (odds ratios: 1.59; 95% confidence intervals: 1.09-2.33), acute lymphoblastic leukemia (odds ratios: 1.61; 95% confidence intervals: 1.19-2.17), “age > 18 years” (odds ratios: 1.59; 95% confidence intervals: 1.09-2.33), “age < 18 years” (odds ratios: 1.48; 95% confidence intervals: 1.08-2.02), and population-based studies (odds ratios: 1.60; 95% confidence intervals: 1.16-2.20). **Conclusions:** Collectively, finding from the current study indicated that GSTT1 null polymorphism may be susceptible on childhood acute leukemia among Chinese.

Keywords

glutathione s-transferase t1, acute leukemia, polymorphism, children, meta-analysis

Abbreviations

ALL, acute lymphoblastic leukemia; AML, acute myeloid leukemia; ANLL, acute nonlymphoblastic leukemia; CI, confidence interval; GSTT1, HB, hospital-based, glutathione S-transferase T1; OR, odds ratio; PB, population-based.

Received: March 2, 2019; Revised: May 15, 2019; Accepted: June 28, 2019.

Introduction

Childhood hematological malignancies include most common cancers in children, of which, leukemia is the one of the most common cancers, accounting for about one-third of all childhood cancers.¹⁻³ There are 2 main types of acute leukemia in children, which includes acute lymphoblastic leukemia (ALL) and acute myeloid leukemia (AML). In China, an increased incidence of ALL in children was found year by year since the middle of the last century. Thirty per every 1 000 000 children were diagnosed as ALL each year.⁴ However, the cause of leukemia is complex, which is generally thought to be the result of environmental and genetic risk factors, as well as genetic-environment interactions, has not been widely determined.^{5,6}

Among the candidate gene polymorphisms, glutathione S-transferase T1 (GSTT1) has been studied as an important genetic variant for childhood acute leukemia. In 1997, Chen *et al* first reported the linkage between GSTT1 polymorphism and incidence of childhood acute leukemia among both black and white children.⁷ Subsequently, abundant numbers of

¹ Department of Pediatrics, Yantaishan Hospital, Yantai, Shandong, China

Corresponding Author:

De-qiang Ma, MD, Yantaishan Hospital, No. 91, Jiefang Road, Zhifu District, Yantai, Shandong 264001, China.
Email: shmadeq66@126.com



studies were conducted about GSTT1 null variant and the risk of childhood acute leukemia among various populations. However, the exact relationship of them is still rarely understood. Whether the association differs among people from different race backgrounds was still unclear. Thus, the current meta-analysis was performed aimed to explore an exact association of GSTT1 null genotype and children acute leukemia risk based on included Chinese population.

Materials and Methods

Search Strategy and Selection Criteria

This study was carried out under the guidelines of the PRISMA group.⁸ Search scopes included articles from PubMed, Springer Link, Ovid, Chinese Wanfang Data Knowledge Service Platform, Chinese National Knowledge Infrastructure, and Chinese Biology Medicine databases published until July 2018. The search keywords were (glutathione S-transferase T1 or GSTT1) and (leukemia or leucocytopenia) and (polymorphism or variant) and (child or children). All the language was acceptable. We included all the suitable studies. References of identified studies were also manually screened to search any omitted articles. The inclusion criteria were: (1) studies with case-control design which evaluated the association between GSTT1 null variant and children acute leukemia; (2) studies with a sufficient genotypes data in cases and controls; (3) Chinese populations; (4) we only included the article with most complete data if detected duplicate studies or overlapping populations. Reviews, letter to the editor, case report, and editorial article were included in this search.

Data Extraction

Based on the inclusion criteria, 2 reviewers independently extracted the data of interest, including first author's name, publication year, geographical areas, sources of control, the types of leukemia, sample size, age, gender, and available data about genotype from participants. All the case-control studies were stratified to hospital-based (HB) and population-based (PB) studies. In this meta-analysis, the quality of individual studies was assessed according to the 9-star Newcastle–Ottawa Scale.⁹

Statistical Analysis

Pooled odds ratios (ORs) with 95% confidence intervals (95% CIs) were calculated to assess the relationship of GSTT1-null allele and children acute leukemia risk. The Z test was adopted to explore the significance of the pooled OR. Regarding potential heterogeneity among studies, which assessed by Cochran Q-statistic, we defined significant heterogeneity at the levels $P < .10$. A random-effects model was used on the overall analysis when significant heterogeneity was observed; otherwise, a fixed-effects model was adopted. Subgroup analyses were conducted by geographical areas (Northern China and Southern China), subtype of acute leukemia (ALL, AML, and acute

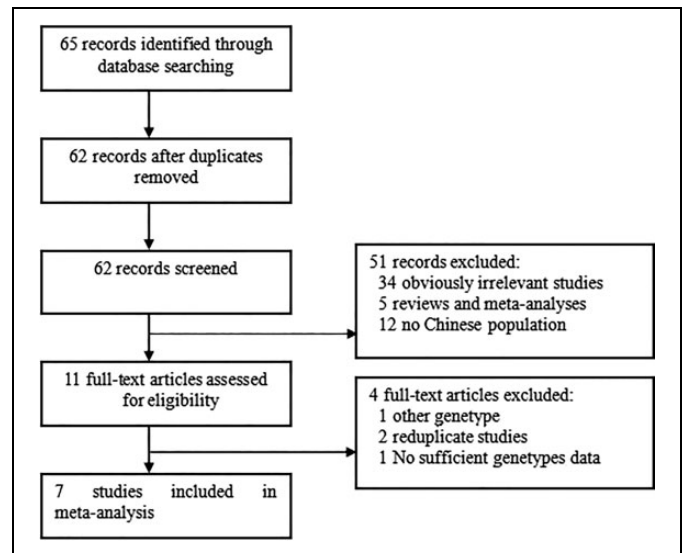


Figure 1. Flow diagram of the literature search.

nonlymphoblastic leukemia [ANLL]), age of controls (<18 years and >18 years) and sources of control source (HB or PB). Sensitivity analysis was performed by comparing the overall results from 2 different effects model. The funnel plot was used to assess potential publication bias and the Egger test was applied to evaluate the funnel plot asymmetry. Statistical analysis was conducted by Stata version 12.0 (StataCorp LP, College Station, Texas).

Results

Characteristics of Included Articles

Figure 1 illustrated the flow chart of inclusion or exclusion process. Sixty-five records were identified about the relationship of GSTT1 polymorphisms and children acute leukemia risk. According to the selection criteria, 7 studies¹⁰⁻¹⁶ were suitable and the remaining was removed. The publication year of all included articles ranged from 2003 to 2013. Totally, 439 children acute leukemia cases and 511 controls were used for the current study. Four of the included studies were PB studies. Types of leukemia included ALL, AML, and ANLL. The description of each study is provided in Table 1.

Meta-Analysis

Table 2 shows the results of GSTT1 polymorphism and childhood acute leukemia risk. We detected no obvious heterogeneity overall. We found a positive relation on childhood acute leukemia risk with the null genotype of GSTT1 polymorphism in all included Chinese populations (ORs: 1.52; 95%CI: 1.19-1.94; Figure 2). When conducted the subgroup analysis by geographic areas, similar results were found in Southern China (ORs: 1.48; 95% CI: 1.08-2.02) and Northern China (ORs: 1.59; 95% CI: 1.09-2.33). Furthermore, we only found a significant association in the group of ALL (ORs: 1.61; 95% CI:

Table 1. Characteristics of Studies Included in the Meta-Analysis.

References	Control Source	Geographical Areas	Leukemia Types	Case Number	Case Age	Case Sex (Male/Female)	Control Number	Control Age	Control Sex (Male/Female)	Cases		Controls		Quality Score
										Null	Non-Null	Null	Non-Null	
Zhang ¹⁰	PB	North China	AML	32	8.91	17/15	146	>18	89/57	19	13	72	74	8
Feng et al ¹¹	PB	North China	AML	49	7.56	26/23	146	>18	89/57	30	19	72	74	8
Wang et al ¹²	PB	North China	ALL	67	6.9	44/23	146	>18	89/57	41	26	72	74	8
Lu et al ¹³	HB	South China	AML+ALL+ANLL	61	<15	36/25	63	<15	42/21	33	28	33	30	7
Jiang and Tan ¹⁴	PB	South China	ALL	89	8	49/40	90	10	48/42	54	35	44	46	8
Li et al ¹⁵	HB	South China	ALL	41	5	25/16	100	6.6	55/45	24	17	44	56	8
Hou and Chen ¹⁶	HB	South China	ALL	100	5.2	67/33	112	5.7	65/47	59	41	55	57	8

Abbreviations: ALL, acute lymphoblastic leukemia; AML, acute myeloid leukemia; ANLL, acute non-lymphoblastic leukemia; PB, population-based; HB, hospital-based; case age/control age, median age or range of age (year).

Table 2. Association of the GSTT1 Polymorphism and Children Acute Leukemia Susceptibility.

Subgroup	n	Random-Effects Model		Fixed-Effects Model		Heterogeneity	
		OR (95% CI)		OR (95% CI)		χ^2	P Value
Total analysis	7	1.52 (1.19-1.94)		1.52 (1.19-1.94)		1.27	.973
Source of control							
Population-based	4	1.60 (1.16-2.20)		1.60 (1.16-2.20)		0.03	.999
Hospital-based	3	1.43 (0.98-2.07)		1.43 (0.98-2.07)		1.04	.596
Geographic areas							
South China	4	1.48 (1.08-2.02)		1.48 (1.08-2.02)		1.15	.764
North China	3	1.59 (1.09-2.33)		1.59 (1.09-2.33)		0.03	.986
Subtype of acute leukemia							
Acute myeloid leukemia	2	1.57 (0.95-2.60)		1.57 (0.95-2.60)		0.02	.882
Acute lymphoblastic leukemia	4	1.61 (1.19-2.17)		1.61 (1.19-2.17)		0.16	.984
Age of controls							
>18	3	1.59 (1.09-2.33)		1.59 (1.09-2.33)		0.03	.986
<18	4	1.48 (1.08-2.02)		1.48 (1.08-2.02)		1.15	.764

Abbreviations: CI, confidence interval; OR, odds ratio.
The bold-face values means the significant results.

1.19-2.17), but not in AML, when we stratified by subtype of acute leukemia. Meanwhile, the hierarchical analysis by age was also done, and we obtained consistent results in the group of “age >18 years” (ORs: 1.59; 95% CI: 1.09-2.33) and “age < 18 years” (ORs: 1.48; 95% CI: 1.08-2.02). At last, the positive association was only discovered in PB studies (ORs: 1.60; 95% CI: 1.16-2.20), not in HB studies when we conducted the analysis by sources of control (Table 2).

Sensitivity Analysis and Publication Bias Diagnosis

Sensitivity analysis which described in the methods was performed, obtaining a consistent result in fixed-effect model and random-effect model. All the significantly pooled ORs were not changed. Therefore, the results in our study were stable

(Table 2). The Begg funnel plot and Egger test were used to evaluate the publication bias in this meta-analysis. As shown in Figure 3, the shape of the funnel plot did not reveal obvious asymmetry. Similarly, the Egger test indicated that there was no evidence of obvious publication bias in all the included studies ($t = -0.34$, $P = .750$, Figure 4).

Discussion

Previous articles have obtained an exact association about the GSTT1 null polymorphism and the risk of lung cancer,¹⁷ esophageal cancer,¹⁸ prostate cancer,¹⁹ and so on. But, it still has controversy and uncertainty about the association of GSTT1 null variant on the risk of acute leukemia. Chen *et al*'s study on black and white children suggested that GST genotype plus

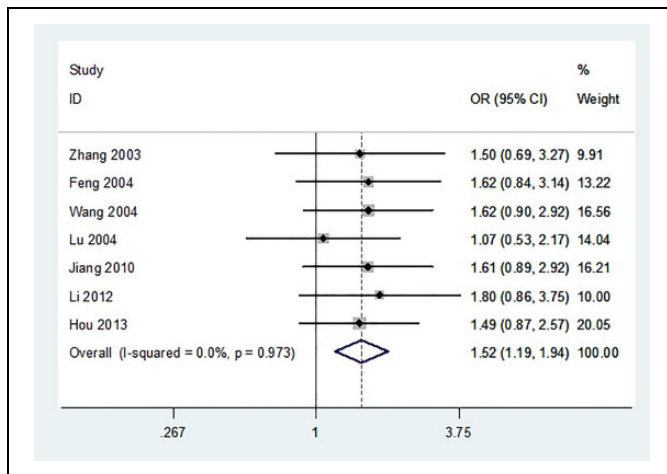


Figure 2. The forest plots on the association between GSTT1 polymorphism and children acute leukemia susceptibility (fixed-effects model).

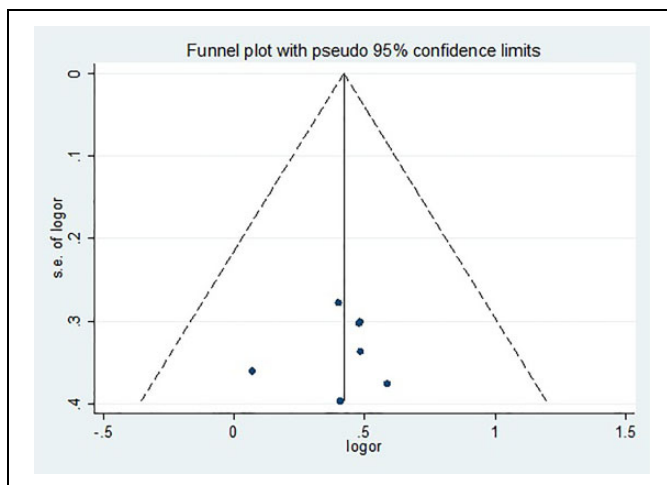


Figure 3. Publication bias assessment with Begg funnel plot.

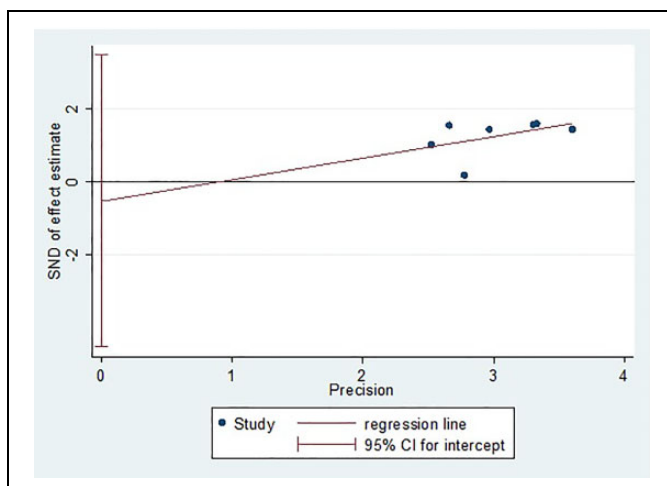


Figure 4. Egger's linear regression.

some other unidentified factors, maybe a risk factor in the development of childhood ALL in American blacks.⁷ Another meta-analysis concluded that Glutathione S-transferase M1 (GSTM1) null genotype could increase the risk of childhood acute leukemia in Chinese.²⁰ Moreover, several meta-analyses had been conducted about GSTT1G polymorphism on childhood acute leukemia risk.²¹⁻²³ Evidences provided a related susceptibility to ALL in children with GCTT1 null variant among Asian populations.²¹⁻²³ The discovered associations maybe differ among populations who were not in the same race backgrounds. Thus, this study aimed to clarify the potential relation about GSTT1 null genotype and acute leukemia risk in children among Chinese populations.

Our report comprised 7 published articles involving 439 children acute leukemia cases and 511 controls. Findings from the analysis indicated a positive association on the risk of acute leukemia in children with GSTT1 null variant. Subgroup analyses by geographic areas and age of controls gained a similar result in Southern China and Northern China populations, as well as in studies of "age > 18 years" and "age < 18 years." Furthermore, it is assumed that the GST genotype frequency may differ between PB studies and HB studies. For this reason, we performed a subgroup analysis by source of controls. As a result, the ORs were not changed, except for HB case-control studies. As far as we know, HB controls who may have other disease cannot be representative of the general population. Therefore, it is more appropriate to use PB controls in case-control studies.

The acute leukemia type may be a confounding factor for the results, we therefore performed the subgroup analysis by acute leukemia type. The results suggested that the GSTT1 null variant may be associated with increased the risk of children ALL (fixed-effect ORs: 1.61; 95% Cis: 1.19-2.17), while no significance was detected among AML children in Chinese population, which was consistent with the previous meta-analyses.^{21,24} However, meta-analysis published by Moulik *et al.*²⁴ have not searched Chinese databases, and those 2 meta-analyses^{21,24} had included smaller participants than ours. All the results mentioned above further suggested a strongly association about GSTT1 variant on the risk of children acute leukemia in Chinese population.

Several limitations existed in our study should be attention. Firstly, due to those openly published studies in this meta-analysis, some nonpublished literature met the inclusion criteria may be missed. Secondly, the AML group had small participants when we conducted the subgroup analysis by acute leukemia type, thus, more studies are warranted to further assess the relation between GSTT1 variant and AML risk. Further studies with large sample sizes concerning distinctive clinical types are warranted to elucidate the association. Thirdly, due to the complex etiology of leukemia, the effect of any single gene might have a limited impact on leukemia risk than have been anticipated so far. Although the abovementioned limitations existed, our study had more advantages. Firstly, all the included studies had strictly followed the inclusion and exclusion criteria which we mentioned in the methods, so we

can decrease the selection bias in our maximum degree. Secondly, our study is strengthened by exploring the influence of geographic area, age, and clinical type on the risk of children acute leukemia and GSTT1 polymorphism among Chinese populations. Thirdly, we compared the result from fixed-effect model with random-effect model for the sensitivity analysis to prove the reliability and stability of the current article. Therefore, all of these results in our study look more meaningful and significant for the future research.

To sum up, findings from the current study revealed that GSTT1 null polymorphism may be susceptible on childhood acute leukemia among Chinese populations. While some limitations existed in this article, more studies with large sample size are warranted to further confirm these results.

Authors' Note

All data are included in the study.


Declaration of Conflicting Interests

The author(s) declared no potential conflicts of interest with respect to the research, authorship, and/or publication of this article.

Funding

The author(s) received no financial support for the research, authorship, and/or publication of this article.

ORCID iD

De-qiang Ma, MD  <https://orcid.org/0000-0003-0976-4624>

References

- Linnet MS, Ries LA, Smith MA, Tarone RE, Devesa SS. Cancer surveillance series: recent trends in childhood cancer incidence and mortality in the united states. *J Natl Cancer Inst* 1999;91(12): 1051-1058.
- Diller L. Clinical practice. Adult primary care after childhood acute lymphoblastic leukemia. *N Engl J Med*. 2011;365(15):1417-1424.
- Creutzig U, van denHeuvel-Eibrink MM, Gibson B, et al. Diagnosis and management of acute myeloid leukemia in children and adolescents: recommendations from an international expert panel. *Blood*. 2012;120(16):3187-3205.
- Howard SC, Metzger ML, Wilimas JA, et al. Childhood cancer epidemiology in low-income countries. *Cancer*. 2008;112(3): 461-472.
- Teitell MA, Pandolfi PP. Molecular genetics of acute lymphoblastic leukemia. *Annu Rev Pathol*. 2009;4:175-198.
- Schotte D, Akbari Moqadam F, Lange-Turenhout EA, et al. Discovery of new micrnas by small rnaome deep sequencing in childhood acute lymphoblastic leukemia. *Leukemia*. 2011;25(9): 1389-1399.
- Chen CL, Liu Q, Pui CH, et al. Higher frequency of glutathione S-transferase deletions in black children with acute lymphoblastic leukemia. *Blood*. 1997;89(5):1701-1707.
- Moher D, Liberati A, Tetzlaff J, Altman DG; PRISMA Group. Preferred reporting items for systematic reviews and meta-analyses: the PRISMA statement. *J Clin Epidemiol*. 2009; 62(10):1006-1012.
- Wells GA, Shea B, O'Connell D, et al. The Newcastle-Ottawa Scale (NOS) for assessing the quality if nonrandomized studies in meta-analyses. 2003. Available from: http://www.ohri.ca/programs/clinical_epidemiology/oxford.asp
- Zhang L. Glutathione S-transferase M1, T1 genetic polymorphisms in childhood leukemia [in Chinese]. Master Thesis, Zhengzhou University. 2003.
- Feng JF, Wang J, Zhang L, Yi B, Wang H. Analysis on GSTM1, T1 genetic polymorphisms in children with AML [in Chinese]. *Lab Med*. 2004;19(3):260-262.
- Wang J, Zhang L, Feng J, et al. Genetic polymorphisms analysis of glutathione S-transferase M1 and T1 in children with acute lymphoblastic leukemia. *J Huazhong Univ Sci Technolog Med Sci*. 2004;24(3):243-244.
- Lu FJ, Wu YX, Gao YJ, et al. Genetic polymorphisms of GST gene and susceptibility to children leukemia [in Chinese]. *J Environ Occup Med*. 2004;21(4):258-260.
- Jiang JL, Tan GF. Association between the polymorphisms of cytochrome P4501A1 and glutathione S-transferase M1, T1 Genes and childhood acute lymphocytic leukemia [in Chinese]. *Chinese J New Clin Med*. 2010;3(9):810-813.
- Li YH, Wen FQ, Xiao ZH, Chen YX, Zhang ZX, Chen LL. Genetic polymorphism of GST gene in children with infectious mononucleosis and acute lymphoblastic leukemia. *Zhongguo Dang Dai Er Ke Za Zhi*. 2012;14(4):260-263.
- Hou W, Chen BL. Impact of GSTT1, GSTM1 and MDR1 genotypes on chemotherapy response of children acute lymphoblastic leukemia [in Chinese]. *J Hainan Med Univ*. 2013;19(11): 1493-1496.
- Pan C, Zhu G, Yan Z, Zhou Y, Liu Z. Glutathione S-transferase T1 and M1 polymorphisms are associated with lung cancer risk in a gender-specific manner. *Oncol Res Treat*. 2014;37(4):164-169.
- Liu YP, Li L. Null genotype of GSTT1 may be associated with esophageal cancer risk: a meta-analysis in Chinese individuals. *Cell Mol Biol (Noisy-le-grand)*. 2017;63(9):59-63.
- Wang J, Xu Y, Fu Q, et al. Association of GSTT1 gene polymorphisms with the risk of prostate cancer: an updating meta-analysis. *Tumour Biol*. 2013;34(3):1431-1440.
- Ma Y, Sui Y, Wang L, Li H. Effect of GSTM1 null genotype on risk of childhood acute leukemia: a meta-analysis. *Tumour Biol*. 2014;35(1):397-402.
- Tang Q, Li J, Zhang S, et al. GSTM1 and GSTT1 null polymorphisms and childhood acute leukemia risk: evidence from 26 case-control studies. *PLoS One*. 2013;8(10):e78810.
- Xu LY, Cao LF. GSTT1 genetic polymorphism and susceptibility to childhood acute lymphoblastic leukemia: a meta-analysis. *Tumour Biol*. 2014;35(2):1433-1437.
- Tang ZH, Zhang C, Cheng P, et al. Glutathione-S-transferase polymorphisms (GSTM1, GSTT1 and GSTP1) and acute leukemia risk in Asians: a meta-analysis. *Asian Pac J Cancer Prev*. 2014;15(5):2075-2081.
- Moulik NR, Parveen F, Kumar A, Agrawal S. Glutathione-S-transferase polymorphism and acute lymphoblastic leukemia (ALL) in north Indian children: a case-control study and meta-analysis. *J Hum Genet*. 2014;59(9):529-535.