

Pincer Complexes | Hot Paper |

A Comparative Study on the Thermodynamics of Halogen Bonding of Group 10 Pincer Fluoride Complexes

Markus Joksch,^[a] Hemlata Agarwala,^[a, b] Monica Ferro,^[a, c] Dirk Michalik,^[a, d]
Anke Spannenberg,^[a] and Torsten Beweries*^[a]

Abstract: The thermodynamics of halogen bonding of a series of isostructural Group 10 metal pincer fluoride complexes of the type [(3,5-R₂-^tBuPOCOP^tBu)MF] (3,5-R₂-^tBuPOCOP^tBu = κ^3 -C₆H₂R₂-2,6-(OP^tBu)₂) with R = H, ^tBu, COOMe; M = Ni, Pd, Pt) and iodopentafluorobenzene was investigated. Based on NMR experiments at different temperatures, all complexes **1-tBu** (R = ^tBu, M = Ni), **2-H** (R = H, M = Pd), **2-tBu** (R = ^tBu, M = Pd), **2-COOMe** (R = COOMe, M = Pd) and **3-tBu**

(R = ^tBu, M = Pt) form strong halogen bonds with Pd complexes showing significantly stronger binding to iodopentafluorobenzene. Structural and computational analysis of a model adduct of complex **2-tBu** with 1,4-diiodotetrafluorobenzene as well as of structures of iodopentafluorobenzene in toluene solution shows that formation of a type I contact occurs.

Introduction

Halogen bonding (XB), a non-covalent interaction between electron-deficient halogen atoms and a Lewis-basic site, has attracted considerable attention in recent years due to its relevance for numerous applications including functional materials, supramolecular polymers, molecular recognition, anion receptors, crystal engineering, and organocatalysis.^[1,2] Halogen bonding is a highly directional interaction that can be described using different models, one of them being the so-called σ hole that results from an anisotropic electron distribution around halogen atoms when being covalently bound to a residue R. This effect is most pronounced for electron-withdrawing moieties R and results in a highly positive region in

elongation of the covalent R–X bond that is capable of acting as an electron-accepting site.^[3]

Numerous studies of halogen bonding of ubiquitous organo-halogen compounds in solution and in the solid state have been reported and demonstrate the enormous potential of this type of interaction.^[4] However, similar investigations involving analogous inorganic or organometallic structures such as metal halides or halide complexes are still comparably rare (Figure 1). This is somewhat surprising given that transition-metal complexes containing halide ligands are known to act as precatalysts and even as active species in a large number of catalytic processes.^[5] Halogen-bonding interactions could, in principle, be of relevance for C–X bond activation reactions as it was shown by Huber et al. for organocatalytic reactions.^[6]

Seminal structural investigations by Brammer and co-workers suggest that transition-metal–halide complexes are excellent hydrogen- and halogen-bonding acceptors.^[7] More recent work by others further supported this and broadened the scope of organometallic halogen bonding.^[8] However, systematic studies of halogen bonding in solution to access thermodynamic data of these interactions are still underrepresented, yet highly desirable in order to fully understand all aspects of this phenomenon and further promote this field of research in terms of applicability. Metal fluorides are ideal for these studies because the ¹⁹F NMR resonance of the fluoride ligand in most cases is the only ¹⁹F NMR signal and/or appears isolated from other signals. Moreover, it is highly sensitive towards changes in its electronic environment. The formation of XB adducts can thus be readily monitored by NMR spectroscopy and the thermodynamics of the interactions can be quantified using the ¹⁹F NMR shift of the metal fluoride. Parkin and co-workers reported halogen bonding of magnesium^[9] and zinc^[10] fluoride complexes (Figure 1) with iodopentafluorobenzene, C₆F₅I, which was found to be an excellent XB donor due to the pres-

[a] Dr. M. Joksch, Dr. H. Agarwala, Dr. M. Ferro, Dr. D. Michalik, Dr. A. Spannenberg, Priv.-Doz. Dr. T. Beweries
Leibniz-Institut für Katalyse e.V. an der Universität Rostock
Albert-Einstein-Strasse 29a, 18059 Rostock (Germany)
E-mail: torsten.beweries@catalysis.de

[b] Dr. H. Agarwala
Department of Synthetic Molecular Chemistry
Ångström Laboratory, Box 523, Uppsala University
Lägerhyddsvägen 1, 75120 Uppsala (Sweden)

[c] Dr. M. Ferro
Politecnico di Milano, Dipartimento di Chimica
Materiali e Ing. Chimica "G. Natta", Via L. Mancinelli 7, 20131 Milano (Italy)

[d] Dr. D. Michalik
Institut für Chemie, Universität Rostock
Albert-Einstein-Strasse 3a, 18059 Rostock (Germany)

Supporting information and the ORCID identification number(s) for the author(s) of this article can be found under:
<https://doi.org/10.1002/chem.201904863>.

© 2019 The Authors. Published by Wiley-VCH Verlag GmbH & Co. KGaA. This is an open access article under the terms of the Creative Commons Attribution License, which permits use, distribution and reproduction in any medium, provided the original work is properly cited.

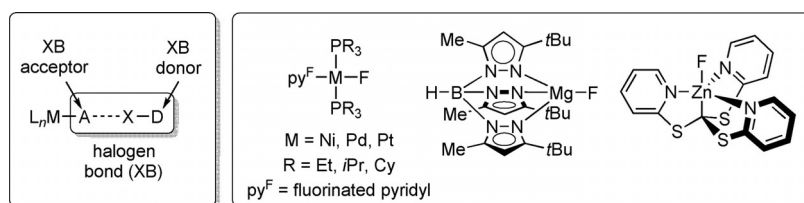
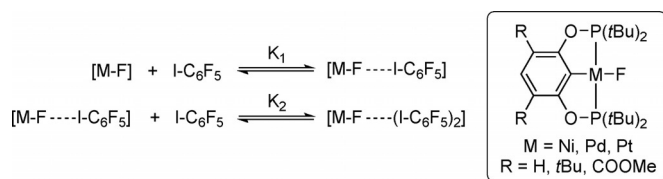


Figure 1. Schematic depiction of halogen bonding of transition-metal halide complexes L_nM-A , and metal fluoride complexes used to date for characterization of XB in solution.

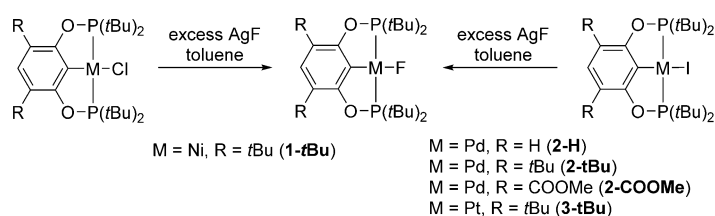
ence of a perfluorinated aryl ring and the resulting high Lewis acidity of the iodine donor atom. A more systematic study of halogen bonding of late-transition-metal fluorides was presented by Perutz and Brammer^[11] who used a series of Group 10 bis(phosphine) complexes that form monofluorides upon C–F activation of fluorinated aromatics such as hexafluorobenzene and fluorinated pyridines (Figure 1). Upon interaction of these fluoride complexes with the XB donor C_6F_5I significant shifts of the metal fluoride ^{19}F NMR resonance of up to 30 ppm were observed. Thermodynamic data reported for these interactions suggest the formation of strong halogen bonds for all complexes ($2.4 < K_{300} < 5.2$; $-26 < \Delta H^\circ < -16 \text{ kJ mol}^{-1}$; $-73 < \Delta S^\circ < -42 \text{ JK}^{-1} \text{ mol}^{-1}$). Also, depending on the polarity of the solvent, changes in the stoichiometry of adduct formation were observed (Figure 1). Recently, also perfluoroalkyl iodide and perfluoroaryl bromide donors have been evaluated with related Ni bis(phosphine) systems.^[12] However, in these studies no full isostructural series of complexes was investigated as depending on the metal centre and the phosphine ligand different patterns of C–F activation were observed, thus resulting in different binding modes of the fluorinated pyridine ligand.^[13] It should be noted that in previous studies, attempts to prepare an isostructural series of monofluoride complexes failed and to the best of our knowledge, no such series of complexes is known to date. The necessity of using monofluoride complexes arises from the problem of formation of multiple interactions (Scheme 1) in the case of well-precedented di- or oligofluoride species such as Group 4 metallocene difluorides or complex ions such as $[MF_d]^{n-}$.

Very recently, we have studied halogen bonding of a series of isostructural Group 10 pincer iodide complexes of the type $[(3,5-R_2-tBuPOCOP^{tBu})M]I$ ($3,5-R_2-tBuPOCOP^{tBu} = \kappa^3-C_6HR_2-2,6-(OPtBu)_2$) with $R = tBu$; $M = Ni, Pd, Pt$) with iodine and found



Scheme 1. Schematic depiction of halogen bonding of late transition-metal halide complexes with C_6F_5I and structural motif of pincer complexes used in this study.

that these complexes form strong halogen bonds in the solid state.^[14] Also, the pincer ligand represents an excellent platform to access a large number of isostructural complexes (Scheme 2).^[15] Based on these findings, we now present a comparative study of halogen bonding of isostructural Group 10 fluoride complexes with C_6F_5I in solution.



Scheme 2. Synthesis of fluoride complexes.

Results and Discussion

Synthesis of nickel, palladium and platinum POCOP fluoride complexes was accomplished by salt metathesis reactions with AgF in toluene starting from suitable halide precursors (Scheme 2).

For these reactions it is highly desirable to strictly exclude the presence of water because the formed fluoride ligand is highly nucleophilic and thus readily forms hydrogen bonding adducts with water. Also, formation of bifluoride complexes, L_nM-FHF , is a major problem, which must be addressed by rigorous drying of solvents and removing traces of HF from AgF. In cases in which traces of the metal bifluoride were present after fluorination, these were removed by treating the crude material with a NaH suspension, followed by filtration to yield the pure metal fluoride complexes. Nickel fluoride complex **1-tBu** was obtained from the corresponding chloride complex as a yellow solid in 58% yield. In the case of palladium and platinum complexes **2-H**^{15b}, **2-tBu**, **2-COOMe** and **3-tBu**, salt metathesis from the iodide species was found to be more convenient, giving the desired fluorides as colourless microcrystalline solids in yields of up to 69%.

All complexes were assigned as metal fluorides based on isolated ^{19}F NMR resonances in the highfield region of the NMR spectra (Table 1). These values resemble those found for other late-transition-metal fluorides.^[16] ^{31}P NMR data are well in line with those reported for structurally similar square-planar Group 10 pincer halide complexes that possess $P(tBu)_2$ donor sites.^[17] It should be noted that trends observed for the

Table 1. Selected NMR data of complexes 1-tBu , 2-H , 2-tBu , 2-COOMe , and 3-tBu (δ in ppm, 297 K, [D ₈]toluene).		
	¹⁹ F NMR	³¹ P NMR
1-tBu	−380.1 (t, $J_{\text{PF}} = 27.0$ Hz)	179.1 (d, $J_{\text{PF}} = 27.0$ Hz)
2-H	−317.8 (s)	185.8 (s)
2-tBu	−315.6 (s)	185.6 (s)
2-	−326.3 (s)	191.0 (s)
COOMe		
3-tBu	−309.9 (s); −309.9 (d, $J_{\text{PtF}} = 136.0$ Hz)	174.3 (d, $J_{\text{PF}} = 2.0$ Hz); 174.3 (dd, $J_{\text{PtP}} = 3215$ Hz, $J_{\text{PF}} = 2.0$ Hz)

³¹P NMR resonances of complexes described herein were observed before for iodide complexes bearing these ligands.^[15] In all cases ³¹P NMR shifts of the metal fluoride complex were found highfield from values found for isostructural iodide and chloride complexes, a trend that was observed earlier by Campora and co-workers for PCP Ni and Pd halide complexes.^[18] Notably, P–F coupling was only observed for **1-tBu** and **3-tBu** (Table 1) and ³¹P NMR resonances for Pd complexes were comparably broad. Small values for ² J_{PF} or no detectable coupling^[14] at room temperature was observed before for related Group 10 pincer fluoride complexes (e.g. [(PCP)PdF] (PCP = κ^3 -C₆H₃-2,6-(CH₂PiPr₂)₂), ² $J_{\text{PF}} = 5.9$ Hz).^[18] Prior to titration experiments, the absence of hydrogen bound H₂O or HF was confirmed by ¹H NMR analysis (absence of additional resonances in the downfield region, that is, up to $\delta = 15$ ppm) and by CHN analysis, which showed good agreement with expected values.

The molecular structure of complex **1-tBu** was confirmed by single crystal X-ray diffraction (SC-XRD, Figure 2). The asymmetric unit contains two molecules of the complex in distorted square-planar coordination geometry with a terminal fluoride ligand (Ni1–F1 1.8417(13), Ni2–F2 1.8418(12) Å). These values are in the same range as those found before for other Ni PCP pincer fluoride complexes.^[18,19] In the space-fill model (Figure S6, Supporting Information) it can be seen that the sterically demanding tBu groups shield the fluoride ligand, which could be of importance for selective formation of a 1:1 XB adduct. Additionally, we analysed the molecular structure of the isostructural complexes **2-tBu**, **2-COOMe** and **3-tBu** (Figure 2). Bond lengths and angles of the Pd and Pt complexes are in the expected range with the M–F bonds (**2-tBu**: 2.0304(16), **2-COOMe**: 2.0317(12), **3-tBu**: 2.0539(15) Å) being significantly longer than in the Ni complex **1-tBu** due to the larger size of the heavier congeners.

Fluoride complexes of this type being prone to coordination of Lewis bases can be seen from the interaction of the Pd–F moiety with H₂O in complex **2-tBu**·H₂O, which is formed in the presence of trace amounts of H₂O (Figure S7, Supporting Information).^[20] Notably, formation of such adducts was only observed in case of Pd, indicating a higher tendency of these complexes to perform such interactions. Spectroscopic XB studies thus have to be carried out under rigorous exclusion of moisture.

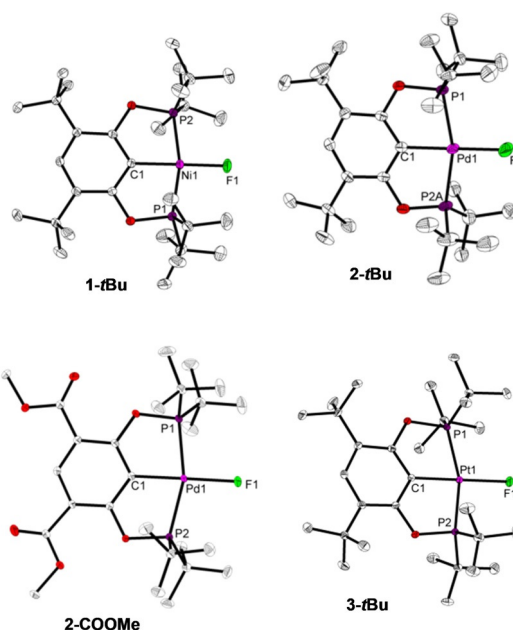


Figure 2. Molecular structures of metal fluoride complexes. Thermal ellipsoids correspond to 30% probability. Hydrogen atoms are omitted for clarity. For complex **1-tBu**, the second molecule of the asymmetric unit is not shown. For complex **2-tBu**, minor occupancy atoms of the disordered POCOP ligand are removed for clarity.

NMR titrations were carried out in toluene using complexes shown in Scheme 1 as the XB acceptor and C₆F₅I as the XB donor, which was used before in related studies. When adding the halogen-bond donor, the ¹⁹F NMR resonance of the fluoride ligand of all complexes exhibits a significant shift to lower field (Figure 3).

The chemical shift difference $\Delta\delta$ of pure metal fluoride and its C₆F₅I adduct (formed in the presence of an excess of C₆F₅I) did not change significantly when going from lowest to highest temperature for all complexes. Although $\Delta\delta$ is similar for

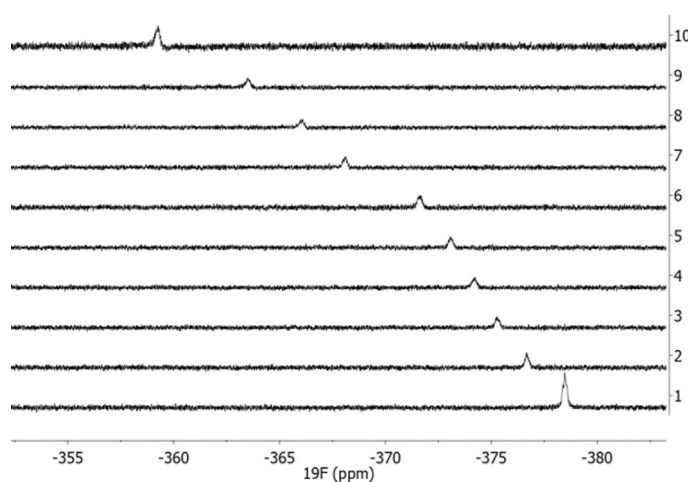


Figure 3. Stacked plot of ¹⁹F NMR spectra (toluene, 242.3 K) at different molar ratios of [C₆F₅I] / **1-tBu**, showing the shift to lower field of the nickel fluoride resonance. Spectra correspond to the following ratios C₆F₅I / **1-tBu**: 1: 0; 2: 0.51; 3: 1.10; 4: 1.57; 5: 2.17; 6: 3.14; 7: 4.94; 8: 7.05; 9: 10.23; 10: 19.81.

Ni and Pd complexes, **3-tBu** showed much smaller lowfield shifts during titration.

Minor variations of the ^{19}F NMR chemical shifts of $\text{C}_6\text{F}_5\text{I}$ are due to the changing concentration and can be neglected. Also, ^{31}P NMR signals for the phosphine ligands show no significant changes. This indicates that the interaction takes place exclusively between metal fluoride and the iodine of $\text{C}_6\text{F}_5\text{I}$ and ^{19}F NMR spectroscopy is thus well suited for a determination of the strength of this contact.

The resulting titration curves recorded at different temperatures using metal fluoride and $\text{C}_6\text{F}_5\text{I}$ stock solutions of similar concentrations (Figure 4) was fitted using a simple model of 1:1 binding. All curves show a reasonable amount of data points before saturation occurs, indicating that the concentration regime used for titration experiments is sensible. From this fit, equilibrium constants K for XB adduct formation as well as the value δ_{max} , which corresponds to the chemical shift of the XB adduct of 1:1 stoichiometry, were obtained. Notably, analysis of the data using 1:2 stoichiometry gave much poorer

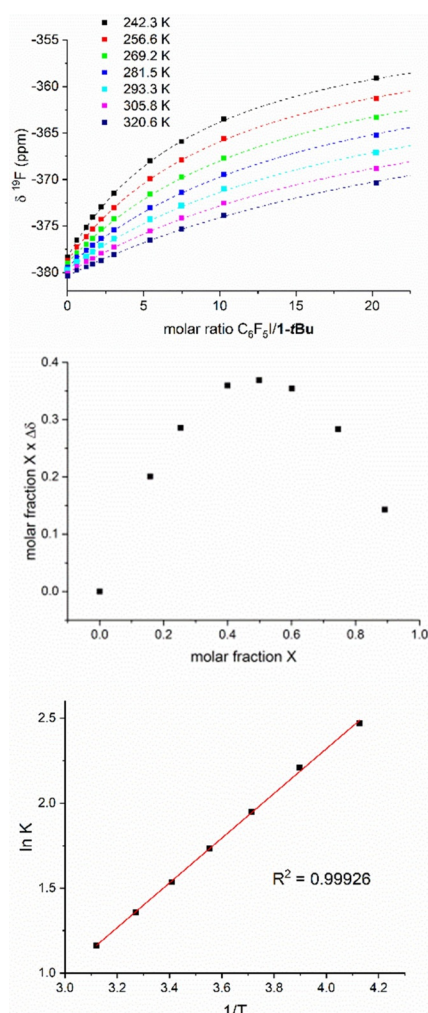


Figure 4. Top: Titration data at different temperatures, showing observed values for the ^{19}F NMR chemical shift of the metal fluoride $\delta^{19}\text{F}$ versus molar ratio of $\text{C}_6\text{F}_5\text{I}$ and complex **1-tBu**. Centre: Job plot for XB of complex 1 and $\text{C}_6\text{F}_5\text{I}$ (toluene, $[\text{1-tBu}] + [\text{C}_6\text{F}_5\text{I}] = 0.01 \text{ mol L}^{-1}$). Bottom: van't Hoff plot for XB of $\text{C}_6\text{F}_5\text{I}$ and complex **1-tBu**.

results with fitted data clearly deviating from the experimental values for all systems investigated.

Formation of adducts of 1:1 stoichiometry was exemplarily confirmed by Job plots for complex **1-tBu** and $\text{C}_6\text{F}_5\text{I}$. For the Job plot, changes in the chemical shift of the ^{19}F NMR resonance ($\Delta\delta$) were monitored as a function of the molar fraction of metal complex (X) while keeping the sum of the concentrations of **1-tBu** and $\text{C}_6\text{F}_5\text{I}$ constant at a value of 0.01 mol L^{-1} . As expected for a 1:1 complex, the graph of $X\Delta\delta$ versus X shows a maximum at $X=0.5$ (Figure 4). Analysis of the temperature dependence of K (van't Hoff plot, Figure 4) gives values for enthalpy ΔH° and entropy ΔS° . An overview of thermodynamic data is depicted in Table 2.

Table 2. Thermodynamic data for XB of Group 10 pincer fluoride complexes in toluene (errors are 95% confidence limits and are based on statistics of fits).

	$K_{242.3}$	$K_{305.8}$	ΔH° [kJ mol $^{-1}$]	ΔS° [J K $^{-1}$ mol $^{-1}$]	$\Delta\delta_{\text{max}, 305.8}$ [ppm] ^[b]
1-tBu	11.8(1)	3.88(4)	-10.9(5)	-24(2)	33.0
2-H	93(1) ^[a]	36.5(4)	-13.7(2)	-15(1)	33.5
2-tBu	116(1)	33.1(4)	-12.1(4)	-10(1)	32.2
2-COOMe	105(2) ^[a]	22.2(2)	-18.6(7)	-34(3)	32.1
3-tBu	24.1(2)	8.9(1)	-9.2(3)	-12(1)	21.7

[a] At 256.6 K (due to limited solubility of complexes **2-H** and **2-COOMe**).
[b] The chemical shift difference $\Delta\delta_{\text{max}, 305.8}$ between free metal fluoride and metal fluoride- $\text{C}_6\text{F}_5\text{I}$ adduct at 305.8 K was calculated by the fitting routine.

Perutz et al. described variations of the stoichiometry of adduct formation when using less polar solvents such as heptane^[11a] that do not allow for additional interactions, for example, π - π interactions between toluene and $\text{C}_6\text{F}_5\text{I}$. In our case, use of nonpolar solvents was not possible because all complexes show very limited solubility. In fact, solubility of **2-H** in toluene is rather poor at low temperatures, NMR titrations using this complex were only done at temperatures between 268 and 313 K.

Complexes **1-tBu**, **2-tBu**, and **3-tBu** are isostructural and differ only in the metal centre and are thus comparable. The results show similar binding enthalpies $-\Delta H^\circ$ with almost identical values for **1-tBu** and **2-tBu**, whereas $-\Delta H^\circ$ for the Pt analogue **3-tBu** is significantly smaller. This is in contrast to results presented earlier by Perutz et al. for structurally similar, but not isostructural complexes, where $-\Delta H^\circ$ was observed to follow the trend $\text{Ni} < \text{Pd} < \text{Pt}$.^[11b] Also, a correlation of $-\Delta H^\circ$ with $-\Delta S^\circ$ was observed leading to compensation in the values of ΔG° and K . Especially in the case of the Pd complex **2-tBu**, this is not possible because the value determined for $-\Delta S^\circ$ is much smaller than for the Ni complex **1-tBu** and in the same range as for the Pt complex **3-tBu**. It should be noted that binding constants are much larger for Pd complexes than for Ni and Pt complexes (Table 2). Also, despite showing excellent agreement with 1:1 binding, titration curves for Pd complexes appeared slightly different: although at lower ratios of $[\text{C}_6\text{F}_5\text{I}] / [\text{Pd}]$ a large variation of chemical shift

differences $\Delta\delta_T$ was observed with temperature, this difference decreases when going to higher ratios $[C_6F_5I]/[Pd]$. For Ni and Pt, $\Delta\delta_T$ continuously increases, giving maximum values at high concentrations of the donor. A similar behaviour was found before for the Pd complex $[Pd(F)(4-C_5NF_4)(PCy_3)_2]$, pointing towards the presence of subtle differences in XB systems containing Pd complexes. Stronger binding in case of the Pd complexes is also evidenced by a qualitative comparison of Job plots for complexes **1-tBu** and **2-COOMe**, in which the curve for **2-COOMe** showed a much larger amplitude with close to triangular shape (Figures S13 and S14, Supporting Information).^[21]

The difference in values for $-\Delta H^\circ$ and $-\Delta S^\circ$ for compounds **2-H**, **2-tBu** and **2-COOMe**, showing variations of the substitution pattern of the POCOP ligand is significant, suggesting that the electronic nature of the ligand plays a role for the strength of the XB interaction. However, the observed trend in $-\Delta H^\circ$ **2-H** < **2-tBu** < **2-COOMe** is somewhat counterintuitive, giving largest values for the complex possessing an electron withdrawing COOMe substituted POCOP ligand and smallest values for the more electron-rich tBu substituted complex. XB occurs by interaction of the partially positive XB donor with a Lewis-basic fluoride atom and should thus be most pronounced for complex **2-tBu**. The rationalization of the herein observed effect is currently under investigation.

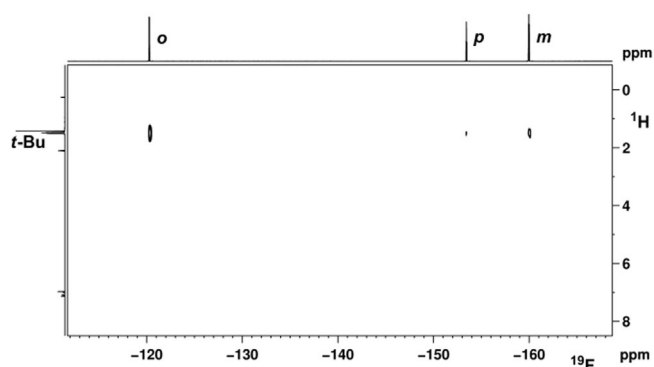


Figure 5. $^{19}F,^1H$ HOESY spectrum of **1-tBu**/ C_6F_5I (470.5/500.1 MHz in $[D_6]$ toluene, mixing time 1.7 s).

To further support the formation of an XB adduct in solution, we performed $^{19}F,^1H$ HOESY NMR experiments for the system **1-tBu**/ C_6F_5I using a tenfold excess of the XB donor. The $^{19}F,^1H$ Heteronuclear Overhauser Effect Spectroscopy (HOESY) NMR spectrum reveals the presence of intermolecular contacts between the tBu protons of the metal fluoride and the C_6F_5I fluorine nuclei. The heteronuclear NOE correlation with the $CH_3/o-F$ is significantly more intense than the ones for $CH_3/m-F$ and $CH_3/p-F$ (Figure 5). This indicates that the iodine is interacting with the metal fluoride, but in the XB adduct the p-F is remote from the tBu group and only produces a small NOE. Similar effects were observed before in a XB study of 1,4-diazabicyclo[2.2.2]octane and C_6F_5I .^[22]

Adducts formed between metal fluorides and C_6F_5I in toluene solution could unfortunately not be crystallized. To get additional structural insights into halogen bonding of these pincer systems, we co-crystallized complex **2-tBu** with 1,4-diiodotetrafluorobenzene, $C_6F_4I_2$ and used this as a benchmark for further computational studies of solution structures formed with C_6F_5I (see above). $C_6F_4I_2$ was used before as a donor for structural studies of halogen bonding of palladium pincer complexes.^[23] Co-crystallization of **2-tBu** and $C_6F_4I_2$ in 2:1 ratio from toluene yields the adduct **2-tBu-I-C₆F₄-I**. The molecular structure is shown in Figure 6. It shows two molecules of **2-tBu** bridged by one molecule of the bifunctional XB donor. Notably, both palladium fluoride XB acceptors are in coplanar arrangement, whereas the bridging $C_6F_4I_2$ is tilted out of this plane by 78° .

Given that the orientation of the molecules with respect to each other in a crystal might arise due to various packing forces in the crystal, especially in halogen bonded systems, density functional theory (DFT) calculations were carried out for **2-tBu-I-C₆F₄-I**, using the crystal-structure coordinates for the input geometry. It was indeed found that the two molecules of **2-tBu** are not co-planar in the lowest-energy optimized structure in toluene. They are at 79.21° with respect to each other (Figure S15 a, Supporting Information). Furthermore, the angle between the plane passing through I-C₆F₄-I and the planes through each of the two **2-tBu** molecules are 23.36° and 56.15° (Figures S15 b, S15 c).

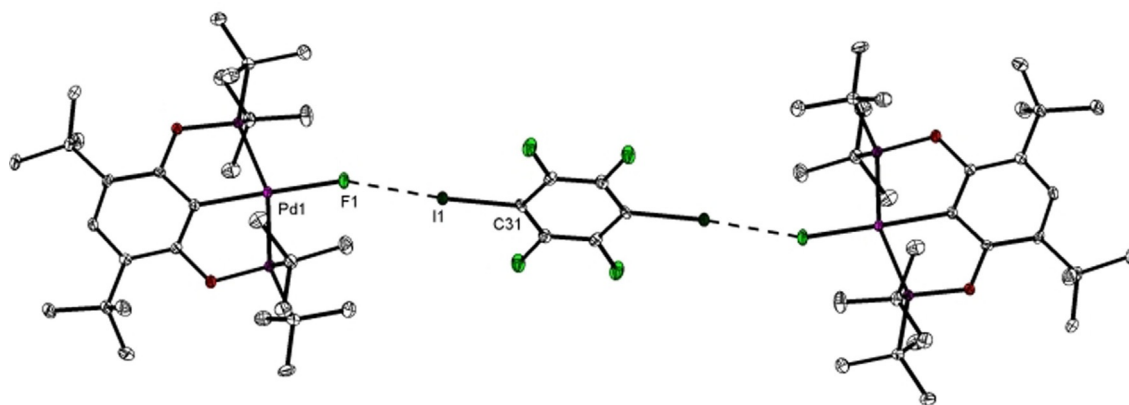


Figure 6. Molecular structure of compound **2-tBu-I-C₆F₄-I**. Thermal ellipsoids correspond to 30% probability. Hydrogen atoms are omitted for clarity.

A comparison of the Pd–F1 distance in the adduct structure (2.0681(17) (SC-XRD); 2.0847 Å (DFT); Table S9a, Supporting Information) with that of the free acceptor **2-tBu** (2.0304(16) (SC-XRD); 2.0670 Å (DFT); Table S10a) shows that upon interaction an elongation of the metal–fluorine bond by approximately 2% occurs. The F...I halogen bonding contact is characterized by a F1...I1 distance of 2.6828(18) Å (DFT: 2.7020 Å; Table S9a), which is clearly lower than the sum of the van der Waals radii (svdW=3.45 Å). Along with this, the bond C31–I1 is slightly elongated (2.115(3) (SC-XRD), 2.1231 Å (DFT); Table S9a) compared with the value found for the free XB donor (2.079(4),^[24] $\Sigma r_{\text{cov}}=2.08$ Å).^[25] Analysis of the bond angles along the XB interaction shows a slightly bent arrangement (SC-XRD: Pd1-F1-I1: 160.0°, DFT: 166.3°; SC-XRD: F1-I1-C31: 174.4°, DFT: 178.4°; Table S9a). In a previous structural study Whitwood, Brammer, and Perutz showed that the degree of bending of the M–X...I–C unit is strongly dependent on the halide X of the acceptor component with fluorides resulting in linear arrangements whereas structures of metal iodide adducts are bent significantly.^[8e] Notably, XB interactions of electron deficient σ holes with regions of higher electron density are typically strongly bent. Reasons for the herein found almost linear arrangement can be the steric hindrance due to the presence of *t*Bu groups, the more isotropic electron distribution of the fluoride ligand, or simple packing requirements. In the solid state the shortest distance between protons of the P(*t*Bu)₂ group and *o*-F atoms of C₆F₄I₂ is found for F2...H18B (4.634 Å). This corresponds to the most pronounced HOESY correlation in related systems with C₆F₅I in solution (Figure 5).

In a previous structural study Rissanen and Wendt showed that co-crystallisation of structurally similar PCP Pd chloride and bromide complexes (PCP=2,6-bis[(di-*tert*-butylphosphino)methyl]phenyl) with C₆F₄I₂ results in the formation of adducts with multiple binding of the XB donor to the Pd halide moiety. Despite similarities in the metal halide environments we did not observe this binding mode in our case because the fluoride-acceptor component displays a less anisotropic electron distribution than chloride or bromide.^[26]

To further gain a structural understanding of the halogen bonded adducts of isostructural complexes **1-tBu**, **2-tBu**, and **3-tBu** with C₆F₅I, we obtained the minimum energy DFT-optimized structures of the adducts by making minor modifications in the crystal structure of **2-tBu-I-C₆F₄-I**. The optimizations were carried out using four different DFT functionals: B3PW91, BHandHLYP, M06, and B3LYP. For the free acceptors, the functionals producing the minimum-energy optimized structure closest to the crystal structure were BHandHLYP (for **1-tBu**; see root mean square error (RMSE) values in Tables S11a and S11b, Supporting Information) and M06 (for **2-tBu** and **3-tBu**; see RMSE values in Tables S10a, S10b, S12a and S12b). Nevertheless, B3LYP appears to give the closest resemblance to the real situation when it comes to halogen-bonded interactions in the present set of complexes as can be noted in the bond lengths and angles for **2-tBu-I-C₆F₄-I** (see RMSE values in Tables S9a and S9b). Therefore, the structures of the adducts with C₆F₅I obtained using B3LYP functional in toluene will be considered

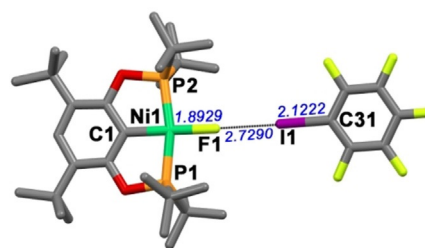


Figure 7. Optimized structure for the adduct **1-tBu-C₆F₅I**, formed between complex **1** and C₆F₅I in toluene. Distances are in Å.

in the following discussion. As an example, the structure of the adduct of complex **1-tBu** and C₆F₅I is depicted in Figure 7. The bond lengths and angles for the adducts **X-C₆F₅I** (**X=1-tBu, 2-tBu, 3-tBu**) are listed in Tables S12–S14. The F...I halogen bonding contact is characterized by F1...I1 distances of 2.7290 (**1-tBu-C₆F₅I**), 2.6628 (**2-tBu-C₆F₅I**), and 2.6828 Å (**3-tBu-C₆F₅I**), which are lower than the sum of the van der Waals radii (svdW 3.45 Å). Also, the bond C31–I1 is slightly elongated (2.1222 (**1-tBu-C₆F₅I**), 2.1283 (**2-tBu-C₆F₅I**), and 2.1254 Å (**3-tBu-C₆F₅I**)) in comparison with that in the free XB donor (2.079(4),^[24] $\Sigma r_{\text{cov}}=2.08$ Å).^[25] The bond angles along the XB interaction reveal an almost linear arrangement: M1-F1-I1 (M=metal): 177.36° (**1-tBu-C₆F₅I**), 160.30° (**2-tBu-C₆F₅I**), and 158.17° (**3-tBu-C₆F₅I**); F1-I1-C31: 179.63° (**1-tBu-C₆F₅I**), 179.34° (**2-tBu-C₆F₅I**), and 178.60° (**3-tBu-C₆F₅I**). Furthermore, the C₆F₅I molecule is more bent with respect to the pincer complex in **2-tBu-C₆F₅I** and **3-tBu-C₆F₅I** compared with that in **1-tBu-C₆F₅I**.

The computed structure of **1-tBu-C₆F₅I** can also be used to understand the observed trend in HOESY experiments (Figure 5). The shortest average distances between the *t*Bu protons (on P) and F (on C₆F₅I), *o*-F, *m*-F, *p*-F, are 5.257 (Table S16o, Supporting Information), 7.769 (Table S16m), and 9.536 Å (Table S16p) respectively, which is in line with the different intensities of cross peaks, *o*-F...H^{*t*Bu} > *m*-F...H^{*t*Bu} > *p*-F...H^{*t*Bu}, in the HOESY (Figure 5). For the co-crystallised adduct **2-tBu-I-C₆F₄-I**, the shortest calculated average distances between the *t*Bu protons (on P) and F (on C₆F₅I), are 4.557 (for F *ortho* to I(1) and 5.443 Å (for F *ortho* to I(2)) (Table S17a and S17b).^[27] Computed structural parameters for these adducts are in the same range as found before for related halogen bonding systems with Group 10 fluoride complexes.^[11b]

Conclusion

We have for the first time synthesised a full series of isostructural square-planar Group 10 metal(II) pincer monofluoride complexes. Along with this, a set of palladium fluoride complexes that differ only by substitution of the aryl backbone of the POCOP pincer ligand were prepared. In toluene solution, these complexes form strong halogen bonds with iodopentafluorobenzene in 1:1 stoichiometry. Thermodynamic parameters determined from ¹⁹F NMR titration experiments show only minor variations in ΔH° for the isostructural series of complexes **1-tBu**, **2-tBu** and **3-tBu**. However, binding constants *K* were much higher for Pd than for Ni and Pt complexes, sug-

gesting that Pd complexes behave differently in halogen-bonding systems. Enthalpic and entropic contributions to the halogen-bonding interaction are consistently smaller for pincer systems described in this study compared to those previously reported for metal fluorides with perfluorinated pyridyl ligands (Figure 1, $-23 < \Delta H^0 < -16 \text{ kJ mol}^{-1}$; $-73 < \Delta S^0 < -39 \text{ JK}^{-1} \text{ mol}^{-1}$).^[11b,12] The structure of halogen-bonding adducts was exemplarily analysed by co-crystallisation of a Pd fluoride complex with 1,4-diiodotetrafluorobenzene. In line with previous results on metal fluoride complexes^[8e] this adduct shows an almost linear arrangement of XB donor and acceptor that is different from common strongly bent halogen bonds of heavier halides. The results presented herein could stimulate others in the field to systematically investigate related organometallic and metal-free systems to gain further insights into the principles of halogen-bonding interactions.

Acknowledgements

We would like to thank our technical and analytical staff, in particular Priv.-Doz. Dr. Wolfgang Baumann for assistance. Financial support by LIKAT is gratefully acknowledged. The macro used for calculation of the equilibrium constants was provided by Prof. Christopher A. Hunter (University of Cambridge).

Conflict of interest

The authors declare no conflict of interest.

Keywords: halogen bonding · nickel · palladium · pincer complexes · platinum

- [1] Selected overviews: a) P. Metrangolo, F. Meyer, T. Pilati, G. Resnati, G. Terraneo, *Angew. Chem. Int. Ed.* **2008**, *47*, 6114; *Angew. Chem.* **2008**, *120*, 6206; b) B. Li, S.-Q. Zang, L.-Y. Wang, T. C. W. Mak, *Coord. Chem. Rev.* **2016**, *308*, 1; c) G. Berger, J. Soubhye, F. Meyer, *Polym. Chem.* **2015**, *6*, 3559; d) R. Bertani, P. Sgarbossa, A. Venzo, F. Lelj, M. Amati, G. Resnati, T. Pilati, P. Metrangolo, G. Terraneo, *Coord. Chem. Rev.* **2010**, *254*, 677.
- [2] *Halogen Bonding: Fundamentals and Applications* (Eds.: P. Metrangolo, G. Resnati), Springer, Berlin, **2008**.
- [3] G. Cavallo, P. Metrangolo, R. Milani, T. Pilati, A. Priimagi, G. Resnati, G. Terraneo, *Chem. Rev.* **2016**, *116*, 2478.
- [4] a) L. C. Gilday, S. W. Robinson, T. A. Barendt, M. J. Langton, B. R. Mullaney, P. D. Beer, *Chem. Rev.* **2015**, *115*, 7118; b) T. M. Beale, M. G. Chudzinski, M. G. Sarwar, M. S. Taylor, *Chem. Soc. Rev.* **2013**, *42*, 1667.
- [5] "Organotransition Metal Chemistry": J. F. Hartwig, *From Bonding to Catalysis*, University Science Books, **2008**.
- [6] a) F. Kniep, S. H. Jungbauer, Q. Zhang, S. M. Walter, S. Schindler, I. Schnapperelle, E. Herdtweck, S. M. Huber, *Angew. Chem. Int. Ed.* **2013**, *52*, 7028; *Angew. Chem.* **2013**, *125*, 7166; b) D. Bulfield, S. M. Huber, *Chem. Eur. J.* **2016**, *22*, 14434.
- [7] L. Brammer, G. M. Espallargas, H. Adams, *CrystEngComm* **2003**, *5*, 343.

- [8] Selected examples: a) M. Tuikka, M. Niskanen, P. Hirva, K. Rissanen, A. Valkonen, M. Haukka, *Chem. Commun.* **2011**, *47*, 3427; b) X. Ding, M. J. Tuikka, P. Hirva, V. Y. Kukushkin, A. S. Novikov, M. Haukka, *CrystEngComm* **2016**, *18*, 1987; c) F. F. Awwadi, D. Taher, S. F. Haddad, M. M. Turnbull, *Cryst. Growth Des.* **2014**, *14*, 1961; d) F. Vidal, M. A. Davila, A. S. Torcuato, P. Gomez-Sal, M. E. G. Mosquera, *Dalton Trans.* **2013**, *42*, 7074; e) V. Thangavadivale, P. M. Aguiar, N. A. Jasim, S. J. Pike, D. A. Smith, A. C. Whitwood, L. Brammer, R. N. Perutz, *Chem. Sci.* **2018**, *9*, 3767.
- [9] M. Rauch, S. Ruccolo, J. P. Mester, Y. Rong, G. Parkin, *Chem. Sci.* **2016**, *7*, 142.
- [10] W. Sattler, S. Ruccolo, G. Parkin, *J. Am. Chem. Soc.* **2013**, *135*, 18714.
- [11] a) S. Libri, N. Jasim, R. N. Perutz, L. Brammer, *J. Am. Chem. Soc.* **2008**, *130*, 7842; b) T. Beweries, L. Brammer, N. A. Jasim, J. E. McGrady, R. N. Perutz, A. C. Whitwood, *J. Am. Chem. Soc.* **2011**, *133*, 14338.
- [12] S. J. Pike, C. A. Hunter, L. Brammer, R. N. Perutz, *Chem. Eur. J.* **2019**, *25*, 9237.
- [13] E. Clot, O. Eisenstein, N. A. Jasim, S. A. Macgregor, J. E. McGrady, R. N. Perutz, *Acc. Chem. Res.* **2011**, *44*, 333.
- [14] M. Joksch, H. Agarwala, A. Spannenberg, T. Beweries, *Eur. J. Inorg. Chem.* **2018**, 3913.
- [15] a) M. Joksch, J. Haak, A. Spannenberg, T. Beweries, *Eur. J. Inorg. Chem.* **2017**, 3815; b) M. Joksch, H. Agarwala, J. Haak, A. Spannenberg, T. Beweries, *Polyhedron* **2018**, *143*, 118.
- [16] a) Selected examples: L. Cronin, C. L. Higgitt, R. Karch, R. N. Perutz, *Organometallics* **1997**, *16*, 4920; b) N. A. Jasim, R. N. Perutz, A. C. Whitwood, T. Braun, J. Izundu, B. Neumann, S. Rothfeld, H.-G. Stammer, *Organometallics* **2004**, *23*, 6140; c) A. Nova, S. Erhardt, N. Jasim, R. N. Perutz, S. A. Macgregor, J. E. McGrady, A. C. Whitwood, *J. Am. Chem. Soc.* **2008**, *130*, 15499.
- [17] a) Selected examples: S. Ramakrishnan, S. Chakraborty, W. W. Brennessel, C. E. D. Chidsey, W. D. Jones, *Chem. Sci.* **2016**, *7*, 117; b) T. Chen, L. Yang, L. Li, K.-W. Huang, *Tetrahedron* **2012**, *68*, 6152; c) S. Chakraborty, J. A. Krause, H. Guan, *Organometallics* **2009**, *28*, 582; d) A. V. Polukeev, S. A. Kuklin, P. V. Petrovskii, S. M. Peregudova, A. F. Smol'yakov, F. M. Dolgushin, A. A. Koridze, *Dalton Trans.* **2011**, *40*, 7201; e) A. Adhikary, J. R. Schwartz, L. M. Meadows, J. A. Krause, H. Guan, *Inorg. Chem. Front.* **2014**, *1*, 71.
- [18] L. M. Martínez-Prieto, C. Melero, D. del Río, P. Palma, J. Cámpora, E. Álvarez, *Organometallics* **2012**, *31*, 1425.
- [19] a) B. Vabre, P. Petiot, R. Declercq, D. Zargarian, *Organometallics* **2014**, *33*, 5173; b) A. Rossin, M. Peruzzini, F. Zanobini, *Dalton Trans.* **2011**, *40*, 4447.
- [20] The occupancy of co-crystallized H₂O was fixed at 0.15, which is in line with NMR data that show traces of H₂O.
- [21] J. S. Renny, L. L. Tomasevich, E. H. Tallmadge, D. B. Collum, *Angew. Chem. Int. Ed.* **2013**, *52*, 11998; *Angew. Chem.* **2013**, *125*, 12218.
- [22] G. Ciancaleoni, R. Bertani, L. Rocchigiani, P. Sgarbossa, C. Zuccaccia, A. Macchioni, *Chem. Eur. J.* **2015**, *21*, 440.
- [23] M. T. Johnson, Z. Džolić, M. Cetina, O. F. Wendt, L. Öhrström, K. Rissanen, *Cryst. Growth Des.* **2012**, *12*, 362.
- [24] S. Y. Oh, C. W. Nickels, F. Garcia, W. Jones, T. Friscic, *CrystEngComm* **2012**, *14*, 6110.
- [25] P. Pyykkö, M. Atsumi, *Chem. Eur. J.* **2009**, *15*, 12770.
- [26] L. Brammer, E. A. Bruton, P. Sherwood, *Cryst. Growth Des.* **2001**, *1*, 277.
- [27] Please note that shortest distances are obtained by averaging the contributions to H^{bu}-CH₃...F from the three H^{bu}-CH₃ of each CH₃ group on tBu. This is based on the fact that there is free rotation around the C-CH₃ bonds of the tBu groups in solution.

Manuscript received: October 25, 2019

Accepted manuscript online: December 17, 2019

Version of record online: February 28, 2020