

# Systems biology—opportunities and challenges: the application of proteomics to study the cardiovascular extracellular matrix

Javier Barallobre-Barreiro, Marc Lynch, Xiaoke Yin, and Manuel Mayr\*

King's British Heart Foundation Centre, King's College London, 125 Coldharbour Lane, London SE5 9NU, UK

Received 28 January 2016; revised 31 August 2016; accepted 9 September 2016; online publish-ahead-of-print 15 September 2016

## Abstract

Systems biology approaches including proteomics are becoming more widely used in cardiovascular research. In this review article, we focus on the application of proteomics to the cardiac extracellular matrix (ECM). ECM remodelling is a hallmark of many cardiovascular diseases. Proteomic techniques using mass spectrometry (MS) provide a platform for the comprehensive analysis of ECM proteins without a priori assumptions. Proteomics overcomes various constraints inherent to conventional antibody detection. On the other hand, studies that use whole tissue lysates for proteomic analysis mask the identification of the less abundant ECM constituents. In this review, we first discuss decellularization-based methods that enrich for ECM proteins in cardiac tissue, and how targeted MS allows for accurate protein quantification. The second part of the review will focus on post-translational modifications including hydroxylation and glycosylation and on the release of matrix fragments with biological activity (matrikines), all of which can be interrogated by proteomic techniques.

## Keywords

Cardiovascular diseases • Extracellular matrix • Post-translational modifications • Proteomics • Systems biology

## 1. Introduction

Proteomic techniques using mass spectrometry (MS) provide a platform for the comprehensive analysis of proteins, thereby facilitating the implementation of systems biology approaches and circumventing the limitations of a traditional, reductionist approach adopted by techniques like western blotting that are based on a priori assumptions of the proteins to be investigated. Furthermore, proteomics is without the constraints of antibody-dependent protein detection and has the capability of detecting post-translational modifications (PTMs), which is beyond the means of gene expression platforms.<sup>1</sup>

Tissue fibrosis is a hallmark of most cases of cardiovascular disease (CVD) and includes modification and deposition of extracellular matrix (ECM). However, detailed studies on the cardiovascular ECM have been sparse due to the lack of analytical tools that facilitate comprehensive characterization of its components. In recent years, proteomics has been successfully applied to study the ECM, providing unprecedented insights into its biology and pathological remodelling.<sup>2–5</sup> In the present review, we describe the utility of ECM proteomics as applied to cardiovascular

research and the potential pitfalls. In addition, we highlight the means to overcome common proteomic challenges and present translational applications of proteomic datasets.

## 2. The ECM in cardiac disease

The ECM not only confers mechanical stability, but is also a reservoir for bioactive molecules. Remodelling of the ECM, including quantitative but also qualitative changes in composition, is a hallmark of CVD. Numerous studies have demonstrated that structural, but also non-structural ECM proteins play crucial roles during disease progression and normal cardiac physiology.

Table 1 summarizes important findings in clinical studies as well as in animal models of cardiac disease.<sup>5–42</sup> Additional studies reported ECM proteins as potential biomarkers for cardiac pathologies<sup>43</sup>; these have been intentionally omitted from the table, the focus of which are ECM and ECM-associated proteins (i.e. extracellular proteases and non-structural proteins that bind to or regulate ECM) from a functional

\*Corresponding author. Tel: +44(0)20 7848 5446; fax: +44(0)207848 5298, E-mail: manuel.mayr@kcl.ac.uk

© The Author 2016. Published by Oxford University Press on behalf of the European Society of Cardiology.

This is an Open Access article distributed under the terms of the Creative Commons Attribution License (<http://creativecommons.org/licenses/by/4.0/>), which permits unrestricted reuse, distribution, and reproduction in any medium, provided the original work is properly cited.

**Table 1** Role of ECM and ECM-associated proteins in cardiac disease

Protein	Clinical context	Main findings
Adiponectin	Cardiac remodelling (m)	Induces cell migration, MMP activation, and collagen remodelling via APPL1-AMPK signalling <sup>6</sup>
ADAMTS9	Developmental defects (m)	Haploinsufficiency leads to reduced versican cleavage, associated with cardiac anomalies <sup>7</sup>
Biglycan	MI (m)	Required for adaptive remodelling <sup>8</sup>
Cathepsin-K	AF (h, rb)	Increased levels and activity accompanied atrial changes linked to the AngII/ATR1R signalling pathway <sup>9</sup>
Cathepsin-S	MI (m)	Mediates fibroblast transdifferentiation during remodelling <sup>10</sup>
Collagen I	Dilated cardiomyopathy (m)	Point mutation induces cardiomyopathy <sup>11</sup>
Collagen VI	MI (m)	Absence improves cardiac function, structure, and remodelling <sup>12</sup>
Collagen XIV	Developmental defects (m)	Important for growth and structural integrity of the myocardium <sup>13</sup>
Collagen XV	Hypertension (m)	Necessary for remodelling. Deficiency predisposes to cardiomyopathy <sup>14</sup>
Connective tissue growth factor	Pressure overload (m)	Inhibition attenuates left ventricular remodelling and dysfunction <sup>15</sup>
Decorin	Left ventricular assist device implantation (h)	Ameliorates adverse remodelling by mediating TGF-beta inhibition <sup>16</sup>
	MI (m)	Absence leads to abnormal scar tissue formation <sup>17</sup>
Fibronectin	MI (m, h)	Essential for progenitor cell response during cardiac repair <sup>18</sup>
	MI (m)	Lack of EDA domain promotes survival and prevents adverse remodelling <sup>19</sup>
Fibulin-2	MI (m)	Loss protects against progressive ventricular dysfunction <sup>20</sup>
Laminin alpha-4	Dilated cardiomyopathy (h, z)	Mutations cause human cardiomyopathy via defects in cardiomyocytes and endothelial cells <sup>21</sup>
Lumican	Hypertrophy (m)	Deficiency results in cardiomyocyte hypertrophy with altered collagen assembly <sup>22</sup>
Mimectin	MI (m, h)	Prevents cardiac dilatation and dysfunction via collagen strengthening <sup>23</sup>
MMP-14	Pressure overload (m)	Mediates pro-fibrotic signalling, leading to alterations in interstitial fibrosis and diastolic function <sup>24</sup>
MMP-28	MI (m)	Deletion exacerbates cardiac dysfunction and rupture by inhibiting M2 macrophage activation <sup>25</sup>
TIMP-2	Pressure overload (m)	Loss leads to exacerbated left ventricular dysfunction and adverse ECM remodeling <sup>26</sup>
MMP-9	AF (p, h)	Increased gelatinase activity contributes to atrial ECM remodelling <sup>27,28</sup>
	MI (h,m)	Crucial for generation of bioactive collagen I fragments that promote scar formation after MI <sup>5</sup>
	MI (m)	Deletion leads to decreased collagen accumulation and left ventricular enlargement <sup>29</sup>
MMP-2	MI (m, r)	Contributes to ischemia-reperfusion injury, and deletion/inhibition prevents cardiac rupture <sup>30,31</sup>
Osteopontin	MI (m)	Deletion leads to left ventricular dilatation and reduced collagen deposition after MI <sup>32</sup>
Periostin	MI (r)	Blockade of Exon 17 preserves cardiac performance <sup>33</sup>
	Pressure overload (m)	Deletion results in less fibrosis and hypertrophy <sup>34</sup>
Perlecan	Developmental defects (m)	Perlecan is critical for heart stability <sup>35</sup>
SPARC	MI (m)	Mediates early ECM remodeling <sup>36</sup>
Tenascin-C	Pressure overload (m)	Accelerates fibrosis by activating macrophages via the integrin $\alpha V\beta 3$ /nuclear factor- $\kappa B$ /interleukin-6 axis <sup>37</sup>
	MI (m)	May aggravate left ventricular remodelling and function <sup>38</sup>
Thrombospondin-1	Pressure overload (m)	Protects myocardium by modulating fibroblast phenotype and ECM metabolism <sup>39</sup>
	MI (d, m)	Role in preventing expansion of healing myocardial infarcts <sup>40</sup>
Thrombospondin-4	Pressure overload (m)	Regulates myocardial fibrosis and remodelling <sup>41</sup>
Versican	Developmental defects (m)	Associated with chamber specification, septation, and valvulogenesis in the developing heart <sup>42</sup>

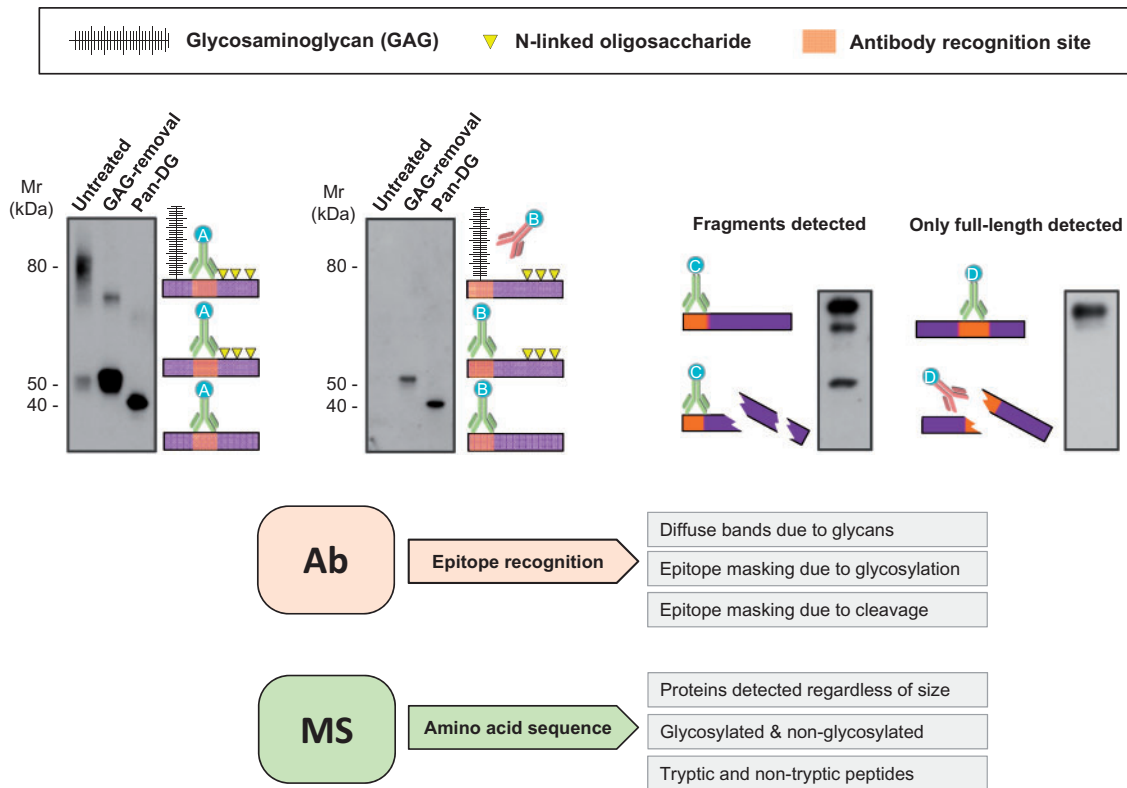
MMP, matrix metalloproteinase; ADAMTS, a disintegrin and metalloproteinase with thrombospondin domains; TIMP, tissue inhibitor of metalloproteinases; SPARC, secreted protein acidic and rich in cysteine; MI, myocardial infarction; AF, atrial fibrillation; m, mouse; h, human; rb, rabbit; z, zebrafish; r, rat; p, pig; d, dog.

perspective. Most proteins included in the table were individually studied using antibodies and loss-of-function models in order to assign their relevance to disease. Proteomics can quantify most of these ECM proteins in a single experiment, leading to the identification of previously unreported links between ECM components in disease.<sup>2-4</sup> For example, in a recent study we demonstrated that genetic deletion of biglycan was accompanied by an unexpected rise of aggrecan in murine aortas.<sup>44</sup>

### 3. 'In antibodies we trust'

Until recently, the identification of proteins in a tissue or a protein lysate has been limited by the availability of antibodies that recognise certain

regions (epitopes) of a protein of interest. Antibodies have been and continue to be an important component of the armamentarium for protein research but they are not without limitations. While antibody arrays overcome the restriction to only one protein, ECM proteins tend to be under-represented in arrays. The main issues of antibody-based protein quantification, however, remain the same: (i) Usually only a small portion of the protein (epitope) is recognised by an antibody. Protein detection by antibodies relies on the presence of unmodified epitopes. In ECM proteins, however, common PTMs include hydroxylation, glycosylation or fragmentation. Due to epitope masking, ECM proteins may not be detectable by antibodies. (ii) Antibodies are often not commercially developed to target proteins in species beyond the commonly used mice and rats such as canine and porcine models for myocardial



**Figure 1** Antibody limitations. Detection by antibodies relies on binding to specific regions (epitopes) of the target protein. PTMs such as glycosylation or fragmentation may hinder epitope accessibility. Antibody A recognises non-glycosylated regions and always yields detection independently of sugar removal (left panel). Antibody B recognises epitopes in the vicinity of glycosylated regions. Therefore, recognition is only achieved after deglycosylation. Similarly, if protein fragmentation occurs, only antibody C, which recognises an intact portion, reveals a degradation pattern. Antibody D targets a region affected by fragmentation and can only detect the intact epitope. Consequently, information about degradation is missed. Proteomics interrogates peptides across the whole sequence and allows for consideration of variable modifications at the amino acid level. Different protein forms can therefore be identified and quantified. GAG, glycosaminoglycan; Pan-DG, pan-deglycosylation.

infarction,<sup>2,45,46</sup> rabbit and goat models for studies involving atrial fibrillation<sup>9,47–49</sup> and sheep as models of dilated cardiomyopathy.<sup>50</sup> While some anti-human or anti-mouse antibodies will cross-react, many others will not recognize their target protein in different species or will display a high degree of non-specific binding. Vice versa, proteins in the bovine serum supplements of cell cultures can be detected not only in the conditioned media but also in the cell lysates.<sup>51</sup>

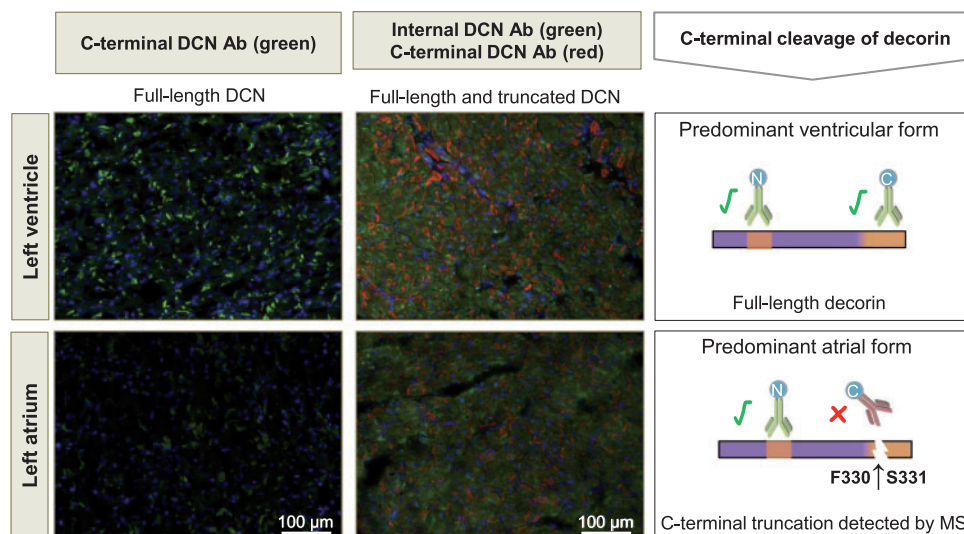
Contrary to antibodies, proteomics does not rely on recognition of one specific epitope and can be applied across species. Moreover, the use of MS allows for determination of changes that occur at the protein level (i.e. amino acid modifications) (Figure 1). For example, we demonstrated using MS that the C-terminus of decorin, a small leucine-rich proteoglycan, is often cleaved in the left atrium but not in the ventricle.<sup>52</sup> MS data provided an explanation why the use of different antibodies for the same target protein yielded very different results (Figure 2).

## 4. ECM revisited by proteomics

Proteomics is the study of the complete protein component of a living organism, tissue or cell and yields unbiased data without a priori knowledge. The workhorse of modern proteomics is the mass

spectrometer and although it is not a new technology *per se*, it was for a long time confined to areas outside the biological sciences. However, it was the advent of matrix-assisted laser desorption ionization (MALDI)<sup>53</sup> and in particular of electrospray ionization (ESI)<sup>54</sup>—which enables liquid chromatography (LC) systems to be interfaced directly to mass spectrometers—that MS branched from analytical chemistry into biology.

The gold standard for contemporary proteomics is LC-tandem MS (LC-MS/MS). Briefly, the LC column separates the peptides (typically generated by digesting proteins with trypsin) in the analyte prior to ionisation and subsequent MS analysis. In addition to recording the mass of the peptide ions, MS/MS technologies induce the subsequent fragmentation of these precursor ions. The masses of these fragment ions can therefore be used to delineate the amino acid sequence of the peptide. The availability of annotated protein sequence databases and algorithms that match the observed MS/MS spectra to protein entries have been crucial for the biomedical application of MS to study proteins.<sup>55,56</sup> MS data can also be aligned to databases generated using DNA or RNA sequences to infer amino acid sequences. Current MS technologies now allow for the characterization of the ECM composition and turnover in CVD in unprecedented detail that is not possible using other techniques.<sup>2–5,52,57–59</sup>



**Figure 2** MS to explain discrepancies between different antibodies. An antibody against a C-terminal epitope (green on left panels, red on right panels) results in less intense staining for decorin (DCN) in the atrium compared to the left ventricle. An antibody against a different epitope (green on right panel) shows no such difference in staining intensities. This may be explained by cleavage of decorin at the C-terminus, which was detected in the atrium using MS.

## 5. Extraction of ECM proteins

Over the past years our group has focused on ECM remodelling in cardiac<sup>2,52,60,61</sup> and vascular tissues<sup>3,4,57,59</sup> using proteomics. In a previous review, we highlighted the potential of proteomics when applied to systems biology.<sup>62</sup> A recent review by Chang *et al.*<sup>63</sup> has focused on clinical applications of ECM proteomics (i.e. biomarker discovery and tissue engineering). In this review, we discuss how MS can be used to assess ECM composition in CVD.

Contemporary mass spectrometers have exceptional sensitivity, providing detection at attomole concentrations.<sup>64</sup> However, such sensitivity is largely confined to pure solutions and not yet achievable in complex biological samples. For example, the dynamic range of proteins present in plasma spans 10 to 11 orders of magnitude (e.g.  $4 \times 10^{10}$  pg/ml for albumin compared to few pg/ml for some interleukins).<sup>65</sup> Current MS instrumentation can only resolve 4–6 orders of magnitude. While proteomics offers a comprehensive analysis of high abundant proteins it has not yet overcome the difficulties of analysing low abundant proteins in complex samples. Unlike PCR or antibody-based techniques, proteomics lacks the ability to amplify low abundant proteins to aid detection and instead relies on enriching the target proteome.

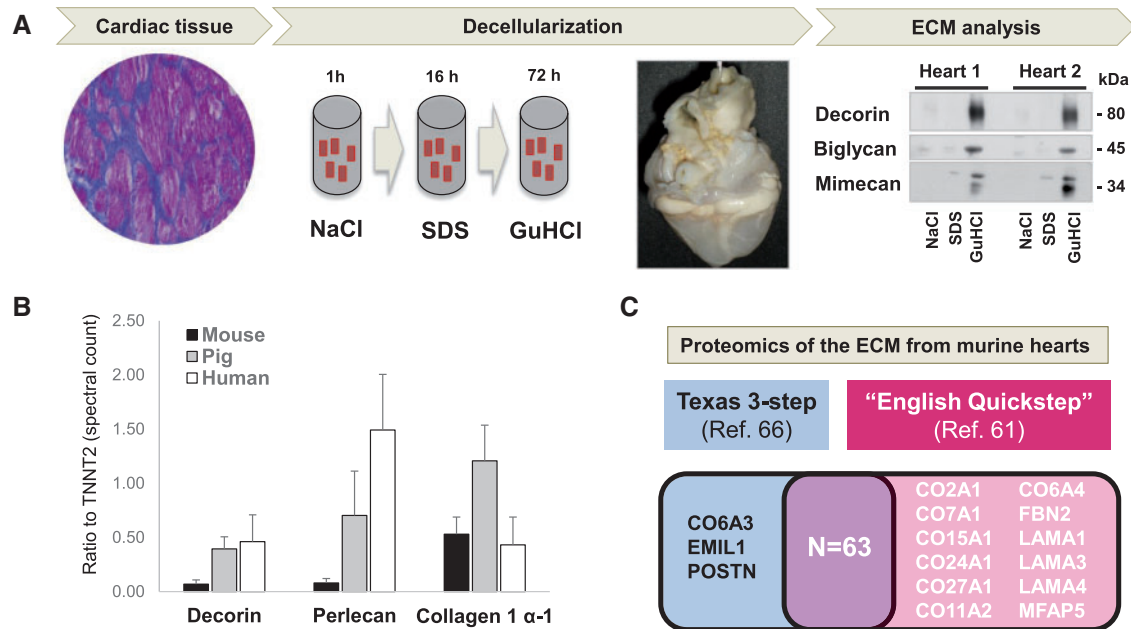
For instance, cardiac ECM proteins are markedly less abundant than cytosolic and mitochondrial proteins.<sup>46</sup> Thus, studies that use whole tissue lysates for proteomic analysis inevitably mask the identification of the less abundant ECM constituents. With cardiac tissue this is exacerbated due to the higher cellular content.<sup>2</sup> Accordingly, methods that enrich for ECM proteins have received considerable interest of late and principally focus on removing plasma contaminants and soluble cellular proteins.<sup>57,66</sup>

While the inherent insolubility of many ECM proteins lends itself to effective enrichment by decellularization, subsequent proteomic analysis requires all proteins to be solubilized. Standard lysis buffers are not effective for ECM solubilisation. Instead, we implemented a stepwise extraction of vascular ECM proteins.<sup>57</sup> This involves treating vascular tissues

with sodium chloride (NaCl) to remove plasma proteins and extract loosely bound extracellular proteins before decellularizing the tissue with sodium dodecyl sulfate (SDS). Each incubation step takes 4 h. Solubilisation of mature ECM proteins is finally achieved by treatment with guanidine hydrochloride (GuHCl) which destabilizes the ionic, disulfide-dependent protein conformations in large aggregating proteoglycans (versican, aggrecan, etc.), small proteoglycans (decorin, biglycan, etc.), cell-attachment glycoproteins such as type VI collagen, fibronectins, laminins, and basement membrane components.<sup>67</sup> The method was later adapted for the use in porcine cardiac tissue by reducing the incubation time for NaCl and prolonging the SDS treatment<sup>2</sup> (Figure 3A). In smaller animal models (i.e. mouse, rat) cardiac cellularity is proportionally higher compared to that of larger animal models such as pig or goat (Figure 3B). With increased cellularity, decellularization is more difficult to achieve and may require additional enrichment steps, i.e. for glycoproteins or glycopeptides.<sup>52</sup>

Others have adopted similar workflows to extract ECM proteins in a number of tissues.<sup>66,68–70</sup> Of note is the Texas 3-step extraction method by Lindsey's group.<sup>66</sup> In their method, applied to mouse hearts, a similar sequential extraction consisting of NaCl and GuHCl extraction steps as well as the SDS decellularization<sup>2,4,57</sup> are performed. In addition, the Texas 3-step method includes further extraction of the insoluble protein pellet after incubation in GuHCl for 48 h. Notably, the vast majority of ECM proteins are identified in the GuHCl fraction. The pellet, however, contains few polymerized proteins, which are not extracted by our 'English Quickstep' method (Figure 3C).

In a recent proteomics study, Johnson *et al.*<sup>71</sup> studied the human cardiac ECM from cadaveric donor hearts. Decellularization was achieved after perfusion with high SDS concentration (i.e. 10 times greater than that used in our protocol) for more than 3 days. This yields a simplified ECM, but the ECM proteins will be denatured and ECM-associated proteins will be lost during prolonged incubation with such a high concentration of detergents. The study of ECM using MS approaches described below, requires a gentler extraction method from snap-frozen tissues



**Figure 3** Enrichment of cardiac ECM proteins. (A) Our previously published 3-step ECM extraction method for cardiac tissue is based on decellularization and ensures enrichment and detection of ECM proteins. The image shows a decellularized heart after prolonged SDS perfusion. The ECM is solubilized by GuHCl and analysed using proteomics. (B) Smaller species display higher levels of cardiac cellularity as measured by the ratio of 3 members of different ECM protein classes and the cardiac-specific troponin T (TNNT2, y-axis). (C) Proteins identified in murine hearts using the Texas 3-step<sup>66</sup> extraction method compared to those identified by our previously published method (see Drozdov et al.<sup>61</sup>). Most proteins are identified by both methods. Unlike the Texas 3-step method, our ‘English Quickstep’ method did not include an analysis of the remaining pellet after GuHCl extraction.

that strikes a balance between removal of cellular components while preserving ECM-associated proteins.

## 6. Discovery proteomics

Discovery proteomics refers to the use of proteomics as a hypothesis-free tool to globally profile the proteome of a given sample. In discovery proteomics, bottom-up or shotgun proteomics is based on the analysis of peptides generated after enzymatic digestion of a protein mixture. Digested peptides are separated by LC before MS/MS analysis. In comparison to gene expression analysis ECM proteomics offers certain advantages. First, many diseases manifest over years. Therefore, although transcript levels provide a window into cellular activity at the time of harvest, they merely provide an indirect assessment of protein synthesis at a single time point. When studying dynamic entities such as the ECM, transcript levels become more extraneous, particularly as nascent ECM proteins are incorporated into the existing matrix, and actual ECM protein abundance is determined by the balance of protein synthesis, deposition, and degradation.

There are multiple MS approaches that can be applied to yield accurate quantitation. However, each approach comes with distinct trade-offs.<sup>62</sup> Label-free methods can provide relative quantification in simple mixtures. In complex mixtures, isotopic labelling should be employed, which allows multiplexing of samples. For instance, stable isotope labelling with amino acids in cell culture (SILAC) is based on metabolic labelling of proteins *in vitro* with amino acids containing heavy (e.g. <sup>13</sup>C) stable isotopes. Fully labelled SILAC mice have also been generated.<sup>72</sup> Methods for protein labelling are based on the use of isobaric tags, such as isobaric

tags for relative and absolute quantitation (iTRAQ) or tandem mass tag (TMT).<sup>73</sup> Isobaric tags have the same chemical structure but different isotope substitutions. When samples are labelled with different tags, they can be subsequently mixed in equal portions, and the protein abundance from the different samples can be assessed by comparing the abundance of peptides labelled with the different tags in a single LC-MS/MS run. Although these tagging methods overcome issues such as technical reproducibility of LC-MS/MS runs, labelling is only introduced after protein digestion and therefore, unlike SILAC, isobaric tags do not allow for *in vivo* or *in vitro* labelling but have been used for quantitative comparisons using tissue samples.<sup>74,75</sup>

## 7. Targeted proteomics

The discovery proteomics approach is largely limited by the scan speed as peptides are selected for fragmentation based on abundance. This stochastic process results in a bias towards the more abundant proteins.<sup>62</sup> In contrast to discovery proteomics, targeted proteomics focuses on a predetermined group of proteins of interest (e.g. ECM proteins). Proteotypic peptides unique to these proteins are quantified in what is known as selected reaction monitoring (SRM) or multiple reaction monitoring (MRM).<sup>76</sup> The targeted approach increases selectivity, sensitivity, and accuracy and enables simultaneous measurement of hundreds of transitions in a single LC-MS/MS run.<sup>76</sup> The transitions for proteotypic peptides will be interrogated as a surrogate of total protein levels, but peptides not included in the search (e.g. non-annotated PTMs) are not detected.<sup>55</sup> This approach is particularly useful to detect CVD biomarkers, as Domanski et al.<sup>77</sup> demonstrated in a study that also included

ECM biomarkers of fibrosis. Moreover, targeted proteomics constitutes a robust method to validate findings obtained from discovery experiments (Figure 4).<sup>3</sup>

## 8. Post-translational modifications

ECM proteins are often modified by PTMs,<sup>1</sup> most notably hydroxylation and glycosylation.

### 8.1. Collagen hydroxylation

Collagens are the major fibril-forming proteins in the ECM and they consist of a basic triple-helical conformation. The triple helix increases molecular stability and provides resistance to tensile stress. Although many types of collagen exist, a consistent pattern can be observed for amino acid sequences of all collagens; each chain contains enriched triplet repeats consisting of the sequence Xaa-Pro-Gly, where Xaa is any amino acid, Pro is proline, and Gly is glycine. Prolines within these domains become hydroxylated under the action of prolyl-hydroxylases.<sup>78</sup> Hydroxyprolines provide the substrate for the formation of hydrogen bonds between the adjacent collagen alpha chains. Prolyl-4-hydroxylases and prolyl-3-hydroxylase catalyse the hydroxylation of specific proline residues. The former enzyme reacts on proline with the minimum sequence Xaa-Pro-Gly and the latter appears to require a Pro-4Hyp-Gly (Hyp is hydroxyproline) sequence.<sup>78,79</sup> Hydroxylation is a stable, non-reversible PTM that adds +15.99 Da (i.e. an oxygen atom) to proline. Xaa-Pro-Gly domains are rare in ECM proteins other than collagens, and this confers specificity to the acquisition of this PTM.

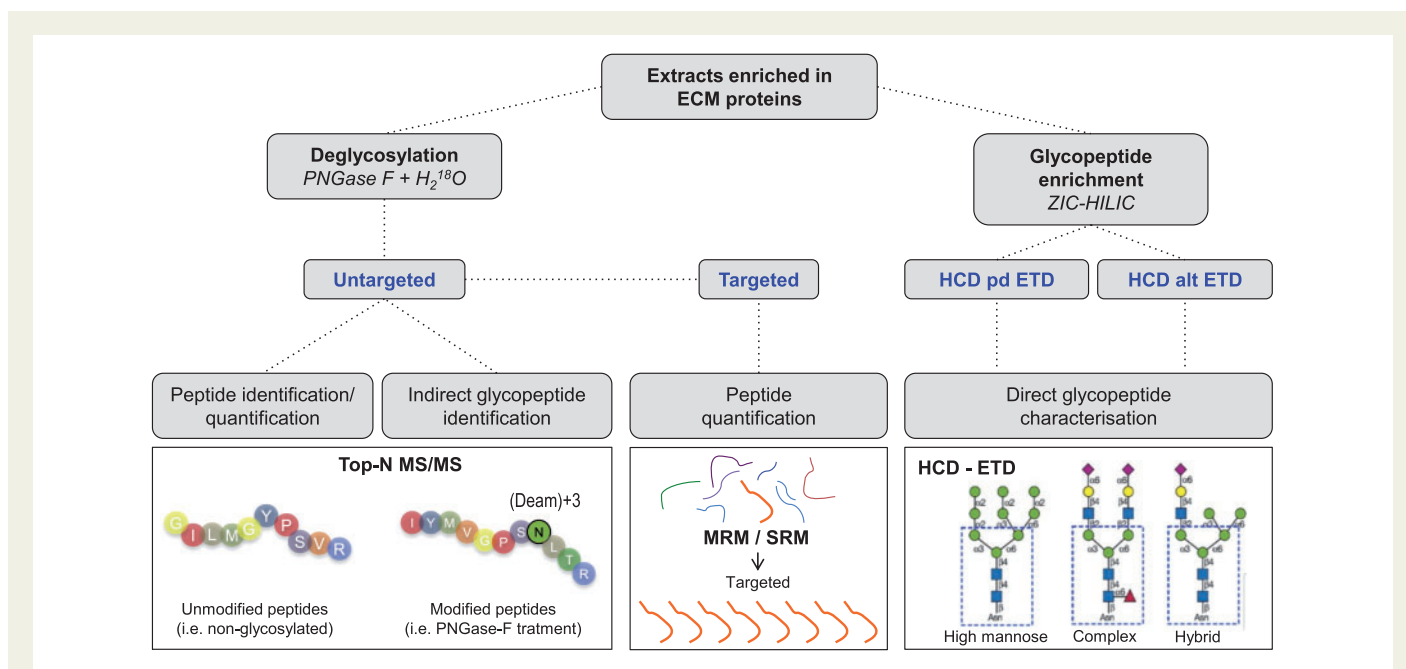
Similar to prolyl-hydroxylases, lysyl-hydroxylases catalyse the hydroxylation of lysine, which is critical for collagen stability. The specifics of lysine hydroxylation are beyond the scope of this review, and are discussed elsewhere.<sup>80</sup> Adding hydroxylation as a variable modification,

improves identification and quantification of collagen levels in disease.<sup>3,68</sup> Ascorbic acid (vitamin C) is a key cofactor for prolyl-4-hydroxylase, and its deficiency causes defects in collagen assembly.<sup>81</sup> Inhibition of this enzyme has been shown to affect left ventricular remodelling after myocardial infarction in rats.<sup>82</sup> In this study only proline:hydroxyproline ratios were assessed. MS provides assessment of hydroxylation with concomitant assignment to specific collagen types.

### 8.2. Glycosylation

Glycosylation is an enzymatic process through which a glycan is covalently attached to a second biomolecule. Glycosylation is a very common form of PTM of ECM proteins. Attached glycans affect ECM protein structure and function by influencing its folding, solubility, aggregation, and/or degradation behaviour.<sup>83</sup> Indeed, aberrant glycoforms are already approved as biomarkers for cancer.<sup>84</sup> In cardiac tissue, Montpetit *et al.*<sup>85</sup> showed that aberrant glycosylation of extracellular domains alters ion channel activity.

There are two main glycosylation types in mammals: N-glycosylation occurs at the carboxamido nitrogen on asparagine residues (Asn) of secreted/membrane proteins within the consensus sequence Asn-Xaa-Thr/Ser, where Xaa is any amino acid except for proline.<sup>86</sup> The second main type of glycosylation is O-glycosylation, in which sugar residues attach to serine and threonine residues (Ser, Thr) or, to a much lesser extent to hydroxyproline and hydroxylysine.<sup>87</sup> The latter two are particularly abundant in collagens and add an additional level of regulation to collagen biosynthesis. If both present, O-glycosylation occurs after N-glycosylation. Moreover, O-glycosylation is not restricted to secreted proteins and to date, no consensus sequences have been identified for this PTM.<sup>88</sup> ECM proteins may be extensively modified by addition of N- and O-linked large and repetitive glycosaminoglycans (GAGs) and shorter and diverse N- and O-linked oligosaccharides. Aberrant



**Figure 4** MS strategies for ECM characterisation. Untargeted proteomics is appropriate for discovery experiments where no a priori information is available. When a delimited number of targets of interest are known a priori, targeted proteomics offers a robust method for detection and quantification. Novel MS methods such as a combination of higher energy collision dissociation (HCD) and electron transfer dissociation (ETD) allow for characterisation of complex PTMs including glycosylation. ZIC-HILIC, zwitterionic hydrophilic interaction LC; Pd, product-dependent; Alt, alternating.

glycosylation can lead to pathological abnormalities and disease. In the last decade, proteomics has emerged as a powerful platform to characterize glycosylation profiles of ECM proteins, including the cardiovascular field.<sup>52,58,89</sup> There are two major strategies that can be used to study glycoproteins by MS (Figure 4).

### 8.2.1 Indirect MS methods

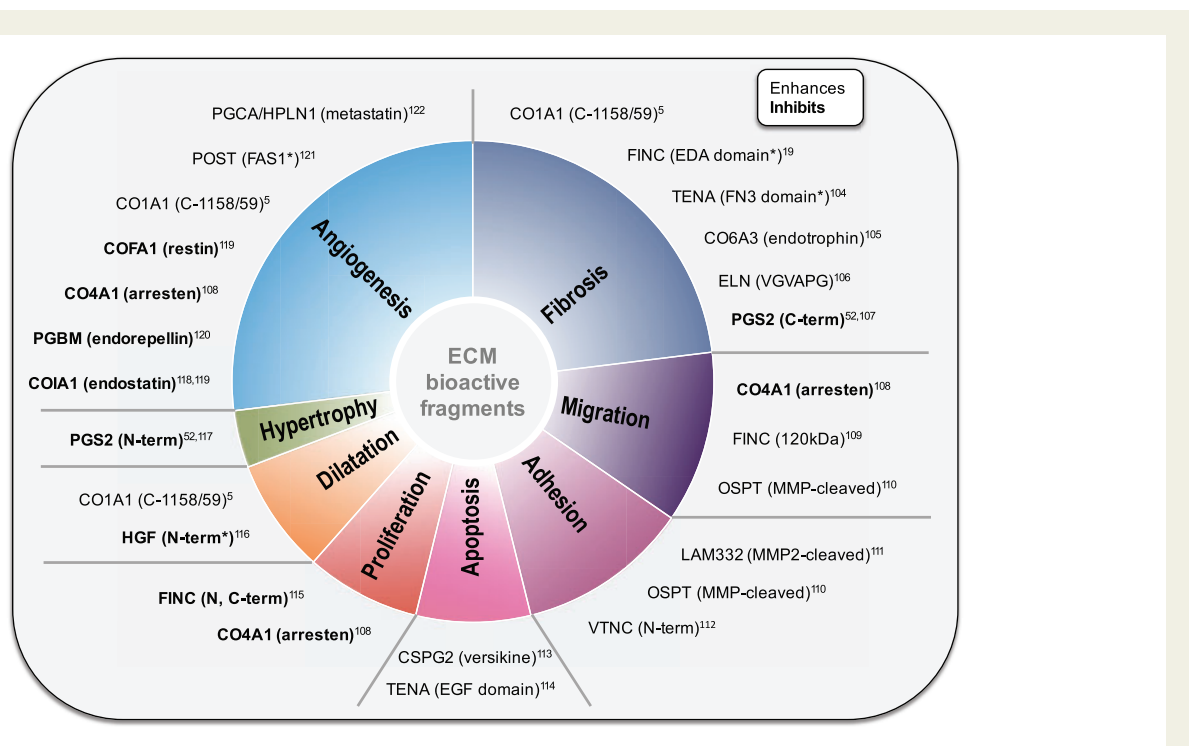
A common large-scale strategy utilizes a glycopeptide or glycoprotein enrichment step followed by glycan removal. Glycopeptides are usually enriched using lectins, hydrophilic interaction LC, hydrazide or graphite. The method of choice will determine the type of glycopeptides that will ultimately be enriched.<sup>90,91</sup> After enrichment, PNGase-F is used to enzymatically remove the glycan moiety from asparagine residues, serving two purposes: Firstly, the core peptide can be analysed without interference from sugars during MS/MS and secondly, PNGase-F via a deamidation reaction converts the asparagine to aspartic acid. This conversion is characterized by a 0.984 Da mass shift that can be detected using MS. Moreover, if the reaction is performed in the presence of H<sub>2</sub><sup>18</sup>O, it instead leads to a 2.99 Da mass shift, indicative for the presence of glycosylation at that position. Using this methodology in rat hearts, Parker et al.<sup>58</sup> identified 1556 N-linked glycosites from 972 protein groups. This study provided information on the changes in glycosylation following ischemia and reperfusion. Enzymatic deglycosylation allows for the separate analysis of the core protein and glycan,<sup>92</sup> but the link between the glycans and peptides is lost.

### 8.2.2 Direct MS methods

The combined analysis of the glycan motif (glycomics) and the protein (proteomics) forms the field of glycoproteomics. For such analysis, proteins in the sample are first digested into peptides, followed by glycopeptide enrichment using zwitterionic hydrophilic interaction LC (ZIC-HILIC)<sup>93</sup> or alternative approaches.<sup>91,94</sup> Recently, the combination of higher energy collision dissociation (HCD) and electron transfer dissociation (ETD) have facilitated direct MS analysis of glycopeptides. HCD fragmentation breaks glycosidic bonds, whereas ETD preserves the glycan attachment and fragments the peptide backbone, providing peptide sequence information.<sup>89</sup> Direct analysis of intact glycopeptides has rarely been applied in the cardiovascular context. Our study by Yin et al.<sup>89</sup> characterised the glycopeptides of secretomes from human endothelial cells. More recently, we have characterized the glycosylation profile of human cardiac ECM proteins.<sup>52</sup>

### 8.3. Reversible PTMs on ECM proteins

Glycosylation and hydroxylation are among the most common PTMs in ECM proteins. Importantly, they constitute non-reversible modifications, but reversible PTMs such as phosphorylation and sulfonation also occur. For example, the transmembrane collagen XVII can be phosphorylated and this mechanism regulates shedding of its ectodomain.<sup>95</sup> Similarly, phosphorylation of osteopontin inhibits vascular calcification.<sup>96</sup> In a study by Lundby et al.<sup>97</sup> proteomics was used to identify phosphosites on 14 different rat tissues including hearts. Phosphopeptides were enriched using titanium dioxide. Notably, many previously unrecognized



**Figure 5** Biological activity of ECM fragments. Fragments derived from a variety of ECM proteins (i.e. matrilins) exert functions that regulate diverse cellular and tissue processes. Proteomics offers a tool for the analysis of known ECM fragments as well as the discovery of previously unknown fragments with functions potentially important for cardiac physiology and putative therapeutic targets. \*Indicates putative fragments with activities only characterised after exogenous administration. CO1A1, collagen alpha-1(I) chain; FINC, fibronectin; EDA, extra domain A; TENA, tenascin; FN3, fibronectin type III domain; CO6A3, collagen alpha-3(VI) chain; ELN, elastin; PGS2, decorin; CO4A1, collagen alpha-1(IV) chain; OSTP, osteopontin; LAM332, laminin 332; VTNC, vitronectin; CSPG2, versican; EGF, epidermal growth factor-like domain; HGF, hepatocyte growth factor; COIA1, collagen alpha-1(XVIII) chain; PGBM, perlecan; COFA1, collagen alpha-1(XV) chain; POST, periostin; FAS1, fasciclin-like domain; PGCA, aggrecan; HPLN1, hyaluronan and proteoglycan link protein 1.

phosphosites were reported in ECM proteins including several collagens and non-collagenous ECM proteins such as laminins, fibronectin, versican, and decorin to name a few. This methodology was effective on fresh animal tissues, but has yet to be applied to the context of cardiac disease. Challenges to its application will include preservation of short-lived PTMs in patient samples and during sample preparation.

## 9. Fragmentation of ECM proteins

Proteolytic fragmentation of ECM proteins by secreted proteases controls their localisation, activation, and interaction, adding an additional layer of regulation for tissue processes. Using experimental data, databases/algorithms such as MEROPS and PROSPER have been created to calculate probability matrices for target protease sequences.<sup>98–100</sup> This is a valuable resource for research and is particularly useful when used in conjunction with proteomics. Standard proteomics pipelines work with digested protein mixtures (i.e. trypsin digestion) to screen for the abundance of proteins in a tissue. Trypsin cleaves C-terminally to lysine (Lys, K) or arginine (Arg, R) residues. However, proteases other than trypsin can be present in samples and the endogenous proteolytic activity may give rise to non-tryptic peptides. In a study from Stegemann *et al.*<sup>59</sup>, we described a number of potential proteolytic targets for various MMPs in the vasculature after addition of these proteases to human vascular tissue explants.

When searching for protease targets, appropriate controls are needed (i.e. healthy or non-digested tissues) in order to avoid reporting artefactual cleavages that may arise from experimental processing, or identifying those that are part of normal physiological turnover. Moreover, the addition of broad-spectrum protease inhibitors during extraction reduces the chance of producing artefactual fragmentation. More sophisticated methods include free C- or N-terminal labelling of endogenous protease-generated fragments prior to digestion for MS analysis.<sup>101</sup> For example, the TAILS proteomics approach (isotope-based N-terminal labelling) has been successfully applied by Prudova *et al.*<sup>102</sup> to analyse the degradome of MMP-2 and MMP-9. The same authors used a similar methodology to characterize the degradation of proteolytic fragments in human platelets.<sup>103</sup> Ultimately, after identification of cleavage sites, targeted proteomics can be used to study the abundance of ECM fragments in clinical samples.

Specific biological activities have been attributed to certain ECM proteolytic fragments (Figure 5).<sup>5,19,52,104–122</sup> The term matrikines has been proposed for these fragments. This should not be confused with the term matricryptins, which is more accurately applied to ECM protein domains that are unexposed (and therefore inactive) unless the protein is subject to fragmentation-derived conformational changes. For example, C-terminal cleavage of collagens XV and XVIII, generates restin and endostatin, respectively. Both fragments exert anti-angiogenic activity *in vivo*.<sup>119</sup> Other collagen types also generate biologically active fragments, e.g. collagens IV and VI, which are highly expressed in the cardiac ECM<sup>2</sup>, as reviewed elsewhere.<sup>123</sup> The large proteoglycan versican is cleaved by proteases from the matrix metalloproteinase (MMP) and a disintegrin and metalloproteinase with thrombospondin motifs (ADAMTS) families.<sup>124</sup> Versikine is generated by N-terminal cleavage of versican by ADAMTS-1/4, and influences cell proliferation and apoptosis locally.<sup>113</sup> Endorepellin, a C-terminal peptide from perlecan exerts anti-angiogenic effects.<sup>120</sup> Last, non-structural ECM proteins also release fragments, e.g. the small leucine-rich proteoglycan decorin releases decorunt and other fragments, that exert local regulatory roles over cytokines and growth factors.<sup>52,107,117</sup> Recently, we demonstrated that decorin is fragmented in the cardiac ECM. We

detected C- and N-terminal non-tryptic cleavage sites on decorin by MS. The resulting cleavage products may regulate growth factor availability.<sup>52</sup> Using similar approaches, the Lindsey group identified cleavage products derived from collagen I that promote scar formation after MI.<sup>5</sup>

## 10. Conclusions

The application of MS constitutes one of the biggest technological advances introduced to protein research. It offers an unbiased platform to analyse global protein expression and holds potential in facilitating novel insights. As recently highlighted in a scientific statement of the American Heart Association<sup>55</sup>; it is anticipated that proteomics research will further our understanding of mechanisms of CVD with one important aspect being the elucidation of ECM composition in healthy and diseased cardiovascular tissues. To achieve this goal, bioinformatics approaches should be applied for interpreting the protein datasets and extract the biologically relevant information. Undoubtedly, the amount of data generated by proteomics represent an analytical challenge. In this regard, special attention should be paid to ECM fragments as they hold potential for two purposes: from a diagnostic perspective, they leak from tissues and when released into the blood stream can be used as biomarkers for CVD. Secondly, since many ECM fragments are biologically active, they not only hold potential as therapeutic targets but also as modifiable therapeutic agents—to date an underexplored avenue of cardiovascular medicine.

## Acknowledgements

We thank Dr Ruifang Lu and Dr Chris Molenaar for providing immunofluorescence images. We thank Ms Ferheen Baig and Ms Marika Fava for their help with figure design.

**Conflict of interest:** none declared.

## Funding

M.M. is Senior Fellow of the British Heart Foundation (FS/13/2/29892). The study was supported by an excellence initiative (Competence Centers for Excellent Technologies—COMET) of the Austrian Research Promotion Agency FFG: 'Research Center of Excellence in Vascular Ageing—Tyrol, VASCage' (K-Project number 843536) and the NIHR Biomedical Research Center based at Guy's and St Thomas' National Health Service Foundation Trust and King's College London in partnership with King's College Hospital.

## References

- Cox J, Mann M. Is proteomics the new genomics? *Cell* 2007;**130**:395–398.
- Barallobre-Barreiro J, Didangelos A, Schoendube FA, Drozdov I, Yin X, Fernández-Caggiano M, Willeit P, Puntmann VO, Aldama-López G, Shah AM. Proteomics analysis of cardiac extracellular matrix remodeling in a porcine model of ischemia/reperfusion injury. *Circulation* 2012;**125**:789–802.
- Barallobre-Barreiro J, Oklu R, Lynch M, Fava M, Baig F, Yin X, Barwari T, Potier DN, Albadawi H, Jahangiri M, Porter KE, Watkins MT, Misra S, Stoughton J, Mayr M. Extracellular matrix remodeling in response to venous hypertension: proteomics of human varicose veins. *Cardiovasc Res* 2016;**110**:419–430.
- Didangelos A, Yin X, Mandal K, Saje A, Smith A, Xu Q, Jahangiri M, Mayr M. Extracellular matrix composition and remodeling in human abdominal aortic aneurysms: a proteomics approach. *Mol Cell Proteomics* 2011;**10**:M111.008128.
- Lindsey ML, Iyer RP, Zamilpa R, Yabluchanskiy A, DeLeon-Pennell KY, Hall ME, Kaplan A, Zouein FA, Bratton D, Flynn ER, Cannon PL, Tian Y, Jin YF, Lange RA, Tokmina-Roszyk D, Fields GB, de Castro Bras LE. A novel collagen matricryptin reduces left ventricular dilation post-myocardial infarction by promoting scar formation and angiogenesis. *J Am Coll Cardiol* 2015;**66**:1364–1374.
- Dadson K, Chasiotis H, Wannaiampikul S, Tungtrongchitr R, Xu A, Sweeney G. Adiponectin mediated APPL1-AMPK signaling induces cell migration, MMP



- activation, and collagen remodeling in cardiac fibroblasts. *J Cell Biochem* 2014;**115**:785–793.
7. Kern CB, Wessels A, McGarity J, Dixon LJ, Alston E, Argraves WS, Geeting D, Lullmann CM, Menick DR, Apte SS. Reduced versican cleavage due to Adams9 haploinsufficiency is associated with cardiac and aortic anomalies. *Matrix Biol* 2010;**29**:304–316.
  8. Westermann D, Mersmann J, Melchior A, Freudenberger T, Petrik C, Schaefer L, Lullmann-Rauch R, Lettau O, Jacoby C, Schrader J, Brand-Herrmann SM, Young MF, Schultheiss HP, Levkau B, Baba HA, Unger T, Zacharowski K, Tschope C, Fischer JW. Biglycan is required for adaptive remodeling after myocardial infarction. *Circulation* 2008;**117**:1269–1276.
  9. Fujita M, Cheng XW, Inden Y, Shimano M, Yoshida N, Inoue A, Yamamoto T, Takeshita K, Kyo S, Taguchi N, Shi GP, Kuzuya M, Okumura K, Murohara T. Mechanisms with clinical implications for atrial fibrillation-associated remodeling: cathepsin K expression, regulation, and therapeutic target and biomarker. *J Am Heart Assoc* 2013;**2**:e000503.
  10. Chen H, Wang J, Xiang MX, Lin Y, He A, Jin CN, Guan J, Sukhova GK, Libby P, Wang JA, Shi GP. Cathepsin S-mediated fibroblast trans-differentiation contributes to left ventricular remodeling after myocardial infarction. *Cardiovasc Res* 2013;**100**:84–94.
  11. Miller AD, Tyagi SC. Mutation in collagen gene induces cardiomyopathy in transgenic mice. *J Cell Biochem* 2002;**85**:259–267.
  12. Luther DJ, Thodeti CK, Shamhart PE, Adapala RK, Hodnichak C, Weihrauch D, Bonaldo P, Chilian WM, Meszaros JG. Absence of type VI collagen paradoxically improves cardiac function, structure, and remodeling after myocardial infarction. *Circ Res* 2012;**110**:851–856.
  13. Tao G, Levay AK, Peacock JD, Huk DJ, Both SN, Purcell NH, Pinto JR, Galantowicz ML, Koch M, Lucchesia PA, Birk DE, Lincoln J. Collagen XIV is important for growth and structural integrity of the myocardium. *J Mol Cell Cardiol* 2012;**53**:626–638.
  14. Rasi K, Pihola J, Czabanka M, Sormunen R, Ilves M, Leskinen H, Rysa J, Kerkela R, Janmey P, Heljasvaara R, Peuhkurinen K, Vuolteenaho O, Ruskoaho H, Vajkoczy P, Pihlajaniemi T, Eklund L. Collagen XV is necessary for modeling of the extracellular matrix and its deficiency predisposes to cardiomyopathy. *Circ Res* 2010;**107**:1241–1252.
  15. Szabo Z, Magga J, Alakoski T, Ulvila J, Pihola J, Vainio L, Kivirikko KI, Vuolteenaho O, Ruskoaho H, Lipson KE, Signore P, Kerkela R. Connective tissue growth factor inhibition attenuates left ventricular remodeling and dysfunction in pressure overload-induced heart failure. *Hypertension* 2014;**63**:1235–1240.
  16. Jahanyar J, Joyce DL, Southard RE, Loebe M, Noon GP, Koerner MM, Torre-Amione G, Youker KA. Decorin-mediated transforming growth factor-beta inhibition ameliorates adverse cardiac remodeling. *J Heart Lung Transplant* 2007;**26**:34–40.
  17. Weis SM, Zimmerman SD, Shah M, Covell JW, Omens JH, Ross J Jr, Dalton N, Jones Y, Reed CC, Iozzo RV, McCulloch AD. A role for decorin in the remodeling of myocardial infarction. *Matrix Biol* 2005;**24**:313–324.
  18. Konstantin MH, Toko H, Gastelum GM, Quijada P, De La Torre A, Quintana M, Collins B, Din S, Avitabile D, Volkers M, Gude N, Fassler R, Sussman MA. Fibronectin is essential for reparative cardiac progenitor cell response after myocardial infarction. *Circ Res* 2013;**113**:115–125.
  19. Arslan F, Smeets MB, Riem Vis PW, Karper JC, Quax PH, Bongartz LG, Peters JH, Hoefler IE, Doevendans PA, Pasterkamp G, de Kleijn DP. Lack of fibronectin-EDA promotes survival and prevents adverse remodeling and heart function deterioration after myocardial infarction. *Circ Res* 2011;**108**:582–592.
  20. Tsuda T, Wu J, Gao E, Joyce J, Markova D, Dong H, Liu Y, Zhang H, Zou Y, Gao F, Miller T, Koch W, Ma X, Chu ML. Loss of fibulin-2 protects against progressive ventricular dysfunction after myocardial infarction. *J Mol Cell Cardiol* 2012;**52**:273–282.
  21. Knoll R, Postel R, Wang J, Kratzner R, Hennecke G, Vacaru AM, Vakeel P, Schubert C, Murthy K, Rana BK, Kube D, Knoll G, Schafer K, Hayashi T, Holm T, Kimura A, Schork N, Toliat MR, Nurnberg P, Schultheiss HP, Schaper W, Schaper J, Bos E, Den Hertog J, van Eeden FJ, Peters PJ, Hasenfuss G, Chien KR, Bakkers J. Laminin-alpha4 and integrin-linked kinase mutations cause human cardiomyopathy via simultaneous defects in cardiomyocytes and endothelial cells. *Circulation* 2007;**116**:515–525.
  22. Dupuis LE, Berger MG, Feldman S, Doucette L, Fowlkes V, Chakravarti S, Thibaudreau S, Alcalá NE, Bradshaw AD, Kern CB. Lumican deficiency results in cardiomyocyte hypertrophy with altered collagen assembly. *J Mol Cell Cardiol* 2015;**84**:70–80.
  23. Van Aelst LN, Voss S, Carai P, Van Leeuwen R, Vanhoutte D, Sanders-van Wijk S, Eurlings L, Swinnen M, Verheyen FK, Verbeke E, Nef H, Troïd C, Cook SA, Brunner-La Rocca HP, Mollmann H, Papageorgiou AP, Heymans S. Osteoglycin prevents cardiac dilatation and dysfunction after myocardial infarction through infarct collagen strengthening. *Circ Res* 2015;**116**:425–436.
  24. Zile MR, Baicu CF, Stroud RE, Van Laer AO, Jones JA, Patel R, Mukherjee R, Spinale FG. Mechanistic relationship between membrane type-1 matrix metalloproteinase and the myocardial response to pressure overload. *Circ Heart Fail* 2014;**7**:340–350.
  25. Ma Y, Halade GV, Zhang J, Ramirez TA, Levin D, Voorhees A, Jin YF, Han HC, Manicone AM, Lindsey ML. Matrix metalloproteinase-28 deletion exacerbates cardiac dysfunction and rupture after myocardial infarction in mice by inhibiting M2 macrophage activation. *Circ Res* 2013;**112**:675–688.
  26. Kandam V, Basu R, Moore L, Fan D, Wang X, Jaworski DM, Oudit GY, Kassiri Z. Lack of tissue inhibitor of metalloproteinases 2 leads to exacerbated left ventricular dysfunction and adverse extracellular matrix remodeling in response to biomechanical stress. *Circulation* 2011;**124**:2094–2105.
  27. Chen CL, Huang SK, Lin JL, Lai LP, Lai SC, Liu CW, Chen WC, Wen CH, Lin CS. Upregulation of matrix metalloproteinase-9 and tissue inhibitors of metalloproteinases in rapid atrial pacing-induced atrial fibrillation. *J Mol Cell Cardiol* 2008;**45**:742–753.
  28. Nakano Y, Niida S, Dote K, Takenaka S, Hirao H, Miura F, Ishida M, Shingu T, Sueda T, Yoshizumi M, Chayama K. Matrix metalloproteinase-9 contributes to human atrial remodeling during atrial fibrillation. *J Am Coll Cardiol* 2004;**43**:818–825.
  29. Ducharme A, Frantz S, Aikawa M, Rabkin E, Lindsey M, Rohde LE, Schoen FJ, Kelly RA, Werb Z, Libby P, Lee RT. Targeted deletion of matrix metalloproteinase-9 attenuates left ventricular enlargement and collagen accumulation after experimental myocardial infarction. *J Clin Invest* 2000;**106**:55–62.
  30. Cheung PY, Sawicki G, Wozniak M, Wang W, Radomski MW, Schulz R. Matrix metalloproteinase-2 contributes to ischemia-reperfusion injury in the heart. *Circulation* 2000;**101**:1833–1839.
  31. Matsumura S, Iwanaga S, Mochizuki S, Okamoto H, Ogawa S, Okada Y. Targeted deletion or pharmacological inhibition of MMP-2 prevents cardiac rupture after myocardial infarction in mice. *J Clin Invest* 2005;**115**:599–609.
  32. Trueblood NA, Xie Z, Communal C, Sam F, Ngoy S, Liaw L, Jenkins AW, Wang J, Sawyer DB, Bing OH, Apstein CS, Colucci WS, Singh K. Exaggerated left ventricular dilation and reduced collagen deposition after myocardial infarction in mice lacking osteopontin. *Circ Res* 2001;**88**:1080–1087.
  33. Taniyama Y, Katsuragi N, Sanada F, Azuma J, Iekushi K, Koibuchi N, Okayama K, Ikeda-Iwabu Y, Muratsu J, Otsu R, Rakugi H, Morishita R. Selective blockade of perostin Exon 17 preserves cardiac performance in acute myocardial infarction. *Hypertension* 2016;**67**:356–361.
  34. Oka T, Xu J, Kaiser RA, Melendez J, Hambleton M, Sargent MA, Lorts A, Brunskill EW, Dorn GW 2nd, Conway SJ, Aronow BJ, Robbins J, Molkenin JD. Genetic manipulation of periostin expression reveals a role in cardiac hypertrophy and ventricular remodeling. *Circ Res* 2007;**101**:313–321.
  35. Sasse P, Malan D, Fleischmann M, Roell W, Gustafsson E, Bostani T, Fan Y, Kolbe T, Breitbart M, Addicks K, Welz A, Brem G, Hescheler J, Azodi A, Costell M, Bloch W, Fleischmann BK, Perlecan is critical for heart stability. *Cardiovasc Res* 2008;**80**:435–444.
  36. McCurdy SM, Dai Q, Zhang J, Zamilpa R, Ramirez TA, Dayah T, Nguyen N, Jin YF, Bradshaw AD, Lindsey ML. SPARC mediates early extracellular matrix remodeling following myocardial infarction. *Am J Physiol Heart Circ Physiol* 2011;**301**:497–505.
  37. Shimojo N, Hashizume R, Kanayama K, Hara M, Suzuki Y, Nishioka T, Hiroe M, Yoshida T, Imanaka-Yoshida K. Tenascin-C may accelerate cardiac fibrosis by activating macrophages via the integrin alphaVbeta3/nuclear factor-kappaB/interleukin-6 axis. *Hypertension* 2015;**66**:757–766.
  38. Nishioka T, Onishi K, Shimojo N, Nagano Y, Matsusaka H, Ikeuchi M, Ide T, Tsutsui H, Hiroe M, Yoshida T, Imanaka-Yoshida K. Tenascin-C may aggravate left ventricular remodeling and function after myocardial infarction in mice. *Am J Physiol Heart Circ Physiol* 2010;**298**:1072–1078.
  39. Xia Y, Dobaczewski M, Gonzalez-Quesada C, Chen W, Biernacka A, Li N, Lee DW, Frangogiannis NG. Endogenous thrombospondin 1 protects the pressure-overloaded myocardium by modulating fibroblast phenotype and matrix metabolism. *Hypertension* 2011;**58**:902–911.
  40. Frangogiannis NG, Ren G, Dewald O, Zymek P, Haudek S, Koerting A, Winkelmann K, Michael LH, Lawler J, Entman ML. Critical role of endogenous thrombospondin-1 in preventing expansion of healing myocardial infarcts. *Circulation* 2005;**111**:2935–2942.
  41. Frolova EG, Sopko N, Blech L, Popovic ZB, Li J, Vasanji A, Drumm C, Krukovets I, Jain MK, Penn MS, Plow EF, Stenina OI. Thrombospondin-4 regulates fibrosis and remodeling of the myocardium in response to pressure overload. *FASEB J* 2012;**26**:2363–2373.
  42. Henderson DJ, Copp AJ. Versican expression is associated with chamber specification, septation, and valvulogenesis in the developing mouse heart. *Circ Res* 1998;**83**:523–532.
  43. Zannad F, Rossignol P, Iraqi W. Extracellular matrix fibrotic markers in heart failure. *Heart Fail Rev* 2010;**15**:319–329.
  44. Grandoch M, Kohlmoegen C, Melchior-Becker A, Feldmann K, Homann S, Muller J, Kiene LS, Zeng-Brouwers J, Schmitz F, Nagy N, Polzin A, Gowert NS, Elvers M, Skrobilin P, Yin X, Mayr M, Schaefer L, Tannock LR, Fischer JW. Loss of biglycan enhances thrombin generation in apolipoprotein E-deficient mice: implications for inflammation and atherosclerosis. *Arterioscler Thromb Vasc Biol* 2016;**36**:e41–50.
  45. Amado LC, Gerber BL, Gupta SN, Rettmann DW, Szarf G, Schock R, Nasir K, Kraitchman DL, Lima JA. Accurate and objective infarct sizing by contrast-enhanced magnetic resonance imaging in a canine myocardial infarction model. *J Am Coll Cardiol* 2004;**44**:2383–2389.
  46. Fernandez-Caggiano M, Pryszyzna O, Barallobre-Barreiro J, CalvinoSantos R, Aldama Lopez G, Generosa Crespo-Leiro M, Eaton P, Domenech N. Analysis of mitochondrial proteins in the surviving myocardium after ischemia identifies mitochondrial pyruvate carrier expression as possible mediator of tissue viability. *Mol Cell Proteomics* 2016;**15**:246–255.

47. Reilly SN, Liu X, Carnicer R, Recalde A, Muszkiewicz A, Jayaram R, Carena MC, Wijesurendra R, Stefanini M, Surdo NC, Lomas O, Ratnatunga C, Sayeed R, Krasopoulos G, Rajakumar T, Bueno-Orovio A, Verheule S, Fulga TA, Rodriguez B, Schotten U, Casadei B. Up-regulation of miR-31 in human atrial fibrillation begets the arrhythmia by depleting dystrophin and neuronal nitric oxide synthase. *Sci Transl Med* 2016;**8**:340ra374.
48. Lu YY, Cheng CC, Chen YC, Lin YK, Chen SA, Chen YJ. Electrolyte disturbances differentially regulate sinoatrial node and pulmonary vein electrical activity: a contribution to hypokalemia- or hyponatremia-induced atrial fibrillation. *Heart Rhythm* 2016;**13**:781–788.
49. Spronk HM, De Jong AM, Verheule S, De Boer HC, Maass AH, Lau DH, Rienstra M, van Hunnik A, Kuiper M, Lumeij S, Zeemering S, Linz D, Kamphuisen PW, Ten Cate H, Crijns HJ, Van Gelder IC, van Zonneveld AJ, Schotten U. Hypercoagulability causes atrial fibrosis and promotes atrial fibrillation. *Eur Heart J* 2016; pii: ehw119. [Epub ahead of print].
50. Moainie SL, Gorman JH III, Guy TS, Bowen FW III, Jackson BM, Plappert T, Narula N, St John-Sutton MG, Narula J, Edmunds LH Jr, Gorman RC. An ovine model of postinfarction dilated cardiomyopathy. *Ann Thorac Surg* 2002;**74**:753–760.
51. Kapustin AN, Chatrou ML, Drozdov I, Zheng Y, Davidson SM, Soong D, Furmanik M, Sanchis P, De Rosales RT, Alvarez-Hernandez D, Shroff R, Yin X, Muller K, Skepper JN, Mayr M, Reutelingsperger CP, Chester A, Bertazzo S, Schurgers LJ, Shanahan CM. Vascular smooth muscle cell calcification is mediated by regulated exosome secretion. *Circ Res* 2015;**116**:1312–1323.
52. Barallobre-Barreiro J, Gupta SK, Zoccarato A, Kitazume-Taneike R, Fava M, Yin X, Werner T, Hirt MN, Zampetaki A, Viviano A, Chong M, Bern M, Kourliouros A, Domenech N, Willeit P, Shah AM, Jahangiri M, Schaefer L, Fischer JW, Iozzo RV, Viner R, Thum T, Heineke J, Kichler A, Otsu K, Mayr M. Glycoproteomics reveals decorin peptides with anti-myostatin activity in human atrial fibrillation. *Circulation* 2016;**134**:817–832.
53. Karas M, Hillenkamp F. Laser desorption ionization of proteins with molecular masses exceeding 10,000 Daltons. *Anal Chem* 1988;**60**:2299–2301.
54. Fenn JB, Mann M, Meng CK, Wong SF, Whitehouse CM. Electrospray ionization for mass spectrometry of large biomolecules. *Science* 1989;**246**:64–71.
55. Lindsey ML, Mayr M, Gomes AV, Delles C, Arrell DK, Murphy AM, Lange RA, Costello CE, Jin YF, Laskowitz DT, Sam F, Terzic A, Van Eyk J, Srinivas PR. Transformative impact of proteomics on cardiovascular health and disease: a scientific statement from the American Heart Association. *Circulation* 2015;**132**:852–872.
56. Patterson SD, Aebersold RH. Proteomics: the first decade and beyond. *Nat Genet* 2003;**33**:311–323.
57. Didangelos A, Yin X, Mandal K, Baumert M, Jahangiri M, Mayr M. Proteomics characterization of extracellular space components in the human aorta. *Mol Cell Proteomics* 2010;**9**:2048–2062.
58. Parker BL, Palmisano G, Edwards AV, White MY, Engholm-Keller K, Lee A, Scott NE, Kolarich D, Hambly BD, Packer NH, Larsen MR, Cordwell SJ. Quantitative N-linked glycoproteomics of myocardial ischemia and reperfusion injury reveals early remodeling in the extracellular environment. *Mol Cell Proteomics* 2011;**10**:M110.006833.
59. Stegemann C, Didangelos A, Barallobre-Barreiro J, Langley SR, Mandal K, Jahangiri M, Mayr M. Proteomic identification of matrix metalloproteinase substrates in the human vasculature. *Circ Cardiovasc Genet* 2013;**6**:106–117.
60. Barallobre-Barreiro J, Didangelos A, Yin X, Domenech N, Mayr M. A sequential extraction methodology for cardiac extracellular matrix prior to proteomics analysis. *Methods Mol Biol* 2013;**1005**:215–223.
61. Drozdov I, Didangelos A, Yin X, Zampetaki A, Abonnenc M, Murdoch C, Zhang M, Ouzounis CA, Mayr M, Tsoka S, Shah AM. Gene network and proteomic analyses of cardiac responses to pathological and physiological stress. *Circ Cardiovasc Genet* 2013;**6**:588–597.
62. Langley SR, Dwyer J, Drozdov I, Yin X, Mayr M. Proteomics: from single molecules to biological pathways. *Cardiovasc Res* 2013;**97**:612–622.
63. Chang CW, Dalgliesh AJ, Lopez JE, Griffiths LG. Cardiac extracellular matrix proteomics: challenges, techniques, and clinical implications. *Proteomics Clin Appl* 2016;**10**:39–50.
64. Thakur SS, Geiger T, Chatterjee B, Bandilla P, Frohlich F, Cox J, Mann M. Deep and highly sensitive proteome coverage by LC-MS/MS without prefractionation. *Mol Cell Proteomics* 2011;**10**:M110.003699.
65. Haab BB, Geierstanger BH, Michailidis G, Vitzthum F, Forrester S, Okon R, Saviranta P, Brinker A, Sorette M, Perlee L, Suresh S, Drwal G, Adkins JN, Omenn GS. Immunoassay and antibody microarray analysis of the HUPO Plasma Proteome Project reference specimens: systematic variation between sample types and calibration of mass spectrometry data. *Proteomics* 2005;**5**:3278–3291.
66. de Castro Brás LE, Ramirez TA, DeLeon-Pennell KY, Chiao YA, Ma Y, Dai Q, Halade GV, Hakala K, Weintraub ST, Lindsey ML. Texas 3-step decellularization protocol: looking at the cardiac extracellular matrix. *J Proteomics* 2013;**86**:43–52.
67. Sajdera SW, Hascall VC. Proteinpolysaccharide complex from bovine nasal cartilage. A comparison of low and high shear extraction procedures. *J Biol Chem* 1969;**244**:77–87.
68. Decaris ML, Gatmaitan M, FlorCruz S, Luo F, Li K, Holmes WE, Hellerstein MK, Turner SM, Emson CL. Proteomic analysis of altered extracellular matrix turnover in bleomycin-induced pulmonary fibrosis. *Mol Cell Proteomics* 2014;**13**:1741–1752.
69. Naba A, Clauser KR, Hoersch S, Liu H, Carr SA, Hynes RO. The matrisome: in silico definition and in vivo characterization by proteomics of normal and tumor extracellular matrices. *Mol Cell Proteomics* 2012;**11**:M111.014647.
70. Wilson R, Norris EL, Brachvogel B, Angelucci C, Zivkovic S, Gordon L, Bernardo BC, Stermann J, Sekiguchi K, Gorman JJ, Bateman JF. Changes in the chondrocyte and extracellular matrix proteome during post-natal mouse cartilage development. *Mol Cell Proteomics* 2012;**11**:M111.014159.
71. Johnson TD, Hill RC, Dzieciatkowska M, Nigam V, Behfar A, Christman KL, Hansen KC. Quantification of deceleralized human myocardial matrix: a comparison of six patients. *Proteomics Clin Appl* 2016;**10**:75–83.
72. Krüger M, Moser M, Ussar S, Thievensen I, Luber CA, Forner F, Schmidt S, Zanivan S, Fässler R, Mann M. SILAC mouse for quantitative proteomics uncovers kindlin-3 as an essential factor for red blood cell function. *Cell* 2008;**134**:353–364.
73. Rauniyar N, Yates JR. Isobaric labeling-based relative quantification in shotgun proteomics. *J Proteome Res* 2014;**13**:5293–5309.
74. Jullig M, Hickey AJ, Middleditch MJ, Crossman DJ, Lee SC, Cooper GJ. Characterization of proteomic changes in cardiac mitochondria in streptozotocin-diabetic rats using iTRAQ isobaric tags. *Proteomics Clin Appl* 2007;**1**:565–576.
75. Yao C, Behring JB, Shao D, Sverdlow AL, Whelan SA, Elezaby A, Yin X, Siwik DA, Seta F, Costello CE, Cohen RA, Matsui R, Colucci WS, McComb ME, Bachschmid MM. Overexpression of catalase diminishes oxidative cysteine modifications of cardiac proteins. *PLoS One* 2015;**10**:e0144025.
76. Picotti P, Aebersold R. Selected reaction monitoring-based proteomics: workflows, potential, pitfalls and future directions. *Nat Methods* 2012;**9**:555–566.
77. Domanski D, Percy AJ, Yang J, Chambers AG, Hill JS, Freue GV, Borchers CH. MRM-based multiplexed quantitation of 67 putative cardiovascular disease biomarkers in human plasma. *Proteomics* 2012;**12**:1222–1243.
78. Kivirikko KI, Helaakoski T, Tasanen K, Vuori K, Myllyla R, Parkkonen T, Pihlajaniemi T. Molecular biology of prolyl 4-hydroxylase. *Ann N Y Acad Sci* 1990;**580**:132–142.
79. Pokidysheva E, Boudko S, Vranka J, Zientek K, Maddox K, Moser M, Fässler R, Ware J, Bächinger HP. Biological role of prolyl 3-hydroxylation in type IV collagen. *Proc Natl Acad Sci U S A* 2014;**111**:161–166.
80. Yamauchi M, Sricholpech M. Lysine post-translational modifications of collagen. *Essays Biochem* 2012;**52**:113–133.
81. Cauty EG, Kadler KE. Procollagen trafficking, processing and fibrillogenesis. *J Cell Sci* 2005;**118**:1341–1353.
82. Nwogu JJ, Geenen D, Bean M, Brenner MC, Huang X, Buttrick PM. Inhibition of collagen synthesis with prolyl 4-hydroxylase inhibitor improves left ventricular function and alters the pattern of left ventricular dilatation after myocardial infarction. *Circulation* 2001;**104**:2216–2221.
83. Varki A, Lowe JB. Biological Roles of Glycans. In: Varki, RD Cummings, JD Esko, HH Freeze, P Stanley, CR Bertozzi, GW Hart, ME Etzler, editors. *Essentials of Glycobiology*. 2nd ed. Cold Spring Harbor NY: Cold Spring Harbor Laboratory Press; 2009.
84. Pinho SS, Reis CA. Glycosylation in cancer: mechanisms and clinical implications. *Nat Rev Cancer* 2015;**15**:540–555.
85. Montpetit ML, Stocker PJ, Schwetz TA, Harper JM, Norring SA, Schaffer L, North SJ, Jang-Lee J, Gilmartin T, Head SR, Haslam SM, Dell A, Marth JD, Bennett ES. Regulated and aberrant glycosylation modulate cardiac electrical signaling. *Proc Natl Acad Sci U S A* 2009;**106**:16517–16522.
86. Bause E. Structural requirements of N-glycosylation of proteins. Studies with proline peptides as conformational probes. *Biochemistry J* 1983;**209**:331–336.
87. Van den Steen P, Rudd PM, Dwek RA, Opdenakker G. Concepts and principles of O-linked glycosylation. *Crit Rev Biochem Mol Biol* 1998;**33**:151–208.
88. Spiro RG. Protein glycosylation: nature, distribution, enzymatic formation, and disease implications of glycopeptide bonds. *Glycobiology* 2002;**12**:43–56.
89. Yin X, Bern M, Xing Q, Ho J, Viner R, Mayr M. Glycoproteomic analysis of the secretome of human endothelial cells. *Mol Cell Proteomics* 2013;**12**:956–978.
90. Ahn YH, Kim JY, Yoo JS. Quantitative mass spectrometric analysis of glycoproteins combined with enrichment methods. *Mass Spectrom Rev* 2015;**34**:148–165.
91. Huang BY, Yang CK, Liu CP, Liu CY. Stationary phases for the enrichment of glycoproteins and glycopeptides. *Electrophoresis* 2014;**35**:2091–2107.
92. Aebersold R, Mann M. Mass spectrometry-based proteomics. *Nature* 2003;**422**:198–207.
93. Idborg H, Zamani L, Edlund PO, Schuppe-Koistinen I, Jacobsson SP. Metabolic fingerprinting of rat urine by LC/MS Part 1. Analysis by hydrophilic interaction liquid chromatography-electrospray ionization mass spectrometry. *J Chromatogr B Anal Technol Biomed Life Sci* 2005;**828**:9–13.
94. Ito S, Hayama K, Hirabayashi J. Enrichment strategies for glycopeptides. *Methods Mol Biol* 2009;**534**:195–203.
95. Zimina EP, Fritsch A, Schermer B, Bakulina AY, Bashkurov M, Benzing T, Bruckner-Tuderman L. Extracellular phosphorylation of collagen XVII by ecto-casein kinase 2 inhibits ectodomain shedding. *J Biol Chem* 2007;**282**:22737–22746.
96. Jono S, Peinado C, Giachelli CM. Phosphorylation of osteopontin is required for inhibition of vascular smooth muscle cell calcification. *J Biol Chem* 2000;**275**:20197–20203.

97. Lundby A, Secher A, Lage K, Nordsborg NB, Dmytriyev A, Lundby C, Olsen JV. Quantitative maps of protein phosphorylation sites across 14 different rat organs and tissues. *Nat Commun* 2012;**3**:876.
98. Boulware KT, Daugherty PS. Protease specificity determination by using cellular libraries of peptide substrates (CLiPS). *Proc Natl Acad Sci U S A* 2006;**103**:7583–7588.
99. Rawlings ND, Barrett AJ. MEROPS: the peptidase database. *Nucleic Acids Res* 1999;**27**:325–331.
100. Song J, Tan H, Perry AJ, Akutsu T, Webb GI, Whisstock JC, Pike RN. PROSPER: an integrated feature-based tool for predicting protease substrate cleavage sites. *PLoS One* 2012;**7**:e50300.
101. Gevaert K, Goethals M, Martens L, Van Damme J, Staes A, Thomas GR, Vandekerckhove J. Exploring proteomes and analyzing protein processing by mass spectrometric identification of sorted N-terminal peptides. *Nat Biotechnol* 2003;**21**:566–569.
102. Prudova A, auf dem Keller U, Butler GS, Overall CM. Multiplex N-terminome analysis of MMP-2 and MMP-9 substrate degradomes by iTRAQ-TAILS quantitative proteomics. *Mol Cell Proteomics* 2010;**9**:894–911.
103. Prudova A, Serrano K, Eckhard U, Fortelny N, Devine DV, Overall CM. TAILS N-terminomics of human platelets reveals pervasive metalloproteinase-dependent proteolytic processing in storage. *Blood* 2014;**124**:49–60.
104. Tamaoki M, Imanaka-Yoshida K, Yokoyama K, Nishioka T, Inada H, Hiroe M, Sakakura T, Yoshida T. Tenascin-C regulates recruitment of myofibroblasts during tissue repair after myocardial injury. *Am J Pathol* 2005;**167**:71–80.
105. Sun K, Park J, Gupta OT, Holland WL, Auerbach P, Zhang N, Goncalves Marangoni R, Nicoloso SM, Czech MP, Varga J, Ploug T, An Z, Scherer PE. Endotrophin triggers adipose tissue fibrosis and metabolic dysfunction. *Nat Commun* 2014;**5**:3485.
106. Mizuno T, Mickle DA, Kiani CG, Li RK. Overexpression of elastin fragments in infarcted myocardium attenuates scar expansion and heart dysfunction. *Am J Physiol Heart Circ Physiol* 2005;**288**:2819–2827.
107. Vial C, Gutierrez J, Santander C, Cabrera D, Brandan E. Decorin interacts with connective tissue growth factor (CTGF)/CCN2 by LRR12 inhibiting its biological activity. *J Biol Chem* 2011;**286**:24242–24252.
108. Nyberg P, Xie L, Sugimoto H, Colorado P, Sund M, Holthaus K, Sudhakar A, Salo T, Kalluri R. Characterization of the anti-angiogenic properties of arresten, an alpha1-beta1 integrin-dependent collagen-derived tumor suppressor. *Exp Cell Res* 2008;**314**:3292–3305.
109. Clark RA, Wikner NE, Doherty DE, Norris DA. Cryptic chemotactic activity of fibronectin for human monocytes resides in the 120-kDa fibroblastic cell-binding fragment. *J Biol Chem* 1988;**263**:12115–12123.
110. Agnihotri R, Crawford HC, Haro H, Matrisian LM, Havrda MC, Liaw L. Osteopontin, a novel substrate for matrix metalloproteinase-3 (stromelysin-1) and matrix metalloproteinase-7 (matrilysin). *J Biol Chem* 2001;**276**:28261–28267.
111. Mydel P, Shipley JM, Adair-Kirk TL, Kelley DG, Broekelmann TJ, Mecham RP, Senior RM. Neutrophil elastase cleaves laminin-332 (laminin-5) generating peptides that are chemotactic for neutrophils. *J Biol Chem* 2008;**283**:9513–9522.
112. De Lorenzi V, Sarra Ferraris GM, Madsen JB, Lupia M, Andreassen PA, Sidenius N. Urokinase links plasminogen activation and cell adhesion by cleavage of the RGD motif in vitronectin. *EMBO Rep* 2016;**17**:982–998.
113. McCulloch DR, Nelson CM, Dixon LJ, Silver DL, Wylie JD, Lindner V, Sasaki T, Cooley MA, Argraves WS, Apte SS. ADAMTS metalloproteases generate active versican fragments that regulate interdigital web regression. *Dev Cell* 2009;**17**:687–698.
114. Wallner K, Li C, Shah PK, Wu KJ, Schwartz SM, Sharifi BG. EGF-Like domain of tenascin-C is proapoptotic for cultured smooth muscle cells. *Arterioscler Thromb Vasc Biol* 2004;**24**:1416–1421.
115. Grant MB, Caballero S, Bush DM, Spoerri PE. Fibronectin fragments modulate human retinal capillary cell proliferation and migration. *Diabetes* 1998;**47**:1335–1340.
116. Sonnenberg SB, Rane AA, Liu CJ, Rao N, Agmon G, Suarez S, Wang R, Munoz A, Bajaj V, Zhang S, Braden R, Schup-Magoffin PJ, Kwan OL, DeMaria AN, Cochran JR, Christman KL. Delivery of an engineered HGF fragment in an extracellular matrix-derived hydrogel prevents negative LV remodeling post-myocardial infarction. *Biomaterials* 2015;**45**:56–63.
117. Guiraud S, van Wittenberghe L, Georger C, Scherman D, Kichler A. Identification of decorin derived peptides with a zinc dependent anti-myostatin activity. *Neuromuscul Disord* 2012;**22**:1057–1068.
118. O'Reilly MS, Boehm T, Shing Y, Fukai N, Vasios G, Lane WS, Flynn E, Birkhead JR, Olsen BR, Folkman J. Endostatin: an endogenous inhibitor of angiogenesis and tumor growth. *Cell* 1997;**88**:277–285.
119. John H, Radtke K, Standker L, Forssmann WG. Identification and characterization of novel endogenous proteolytic forms of the human angiogenesis inhibitors restin and endostatin. *Biochim Biophys Acta* 2005;**1747**:161–170.
120. Mongiat M, Sweeney SM, San Antonio JD, Fu J, Iozzo RV. Endorepellin, a novel inhibitor of angiogenesis derived from the C terminus of perlecan. *J Biol Chem* 2003;**278**:4238–4249.
121. Kim BR, Jang IH, Shin SH, Kwon YW, Heo SC, Choi EJ, Lee JS, Kim JH. Therapeutic angiogenesis in a murine model of limb ischemia by recombinant periostin and its fasciilin I domain. *Biochim Biophys Acta* 2014;**1842**:1324–1332.
122. Liu N, Lapcevich RK, Underhill CB, Han Z, Gao F, Swartz G, Plum SM, Zhang L, Green SJ. Metastatin: a hyaluronan-binding complex from cartilage that inhibits tumor growth. *Cancer Res* 2001;**61**:1022–1028.
123. Ricard-Blum S, Salza R. Matricryptins and matrikines: biologically active fragments of the extracellular matrix. *Exp Dermatol* 2014;**23**:457–463.
124. Nandadasa S, Foulcer S, Apte SS. The multiple, complex roles of versican and its proteolytic turnover by ADAMTS proteases during embryogenesis. *Matrix Biol* 2014;**35**:34–41.