

Survival time tool to guide care planning in people with dementia

Miriam L. Haaksma, PhD, Maria Eriksson, MD, PhD, Debora Rizzuto, PhD, Jeannie-Marie S. Leoutsakos, PhD, Marcel G.M. Olde Rikkert, MD, PhD, René J.F. Melis, MD, PhD,* and Sara Garcia-Ptacek, MD, PhD*

Correspondence

Dr. Garcia-Ptacek
saragptacek@gmail.com

Neurology® 2020;94:e538-e548. doi:10.1212/WNL.00000000000008745

Abstract

Objective

To develop survival prediction tables to inform physicians and patients about survival probabilities after the diagnosis of dementia and to determine whether survival after dementia diagnosis can be predicted with good accuracy.

Methods

We conducted a nationwide registry-linkage study including 829 health centers, i.e., all memory clinics and ≈75% of primary care facilities, across Sweden. Data including cognitive function from 50,076 people with incident dementia diagnoses ≥65 years of age and registered with the Swedish Dementia Register in 2007 to 2015 were used, with a maximum follow-up of 9.7 years for survival until 2016. Sociodemographic factors, comorbidity burden, medication use, and dates of death were obtained from nationwide registries. Cox proportional hazards regression models were used to create tables depicting 3-year survival probabilities for different risk factor profiles.

Results

By August 2016, 20,828 (41.6%) patients in our cohort had died. Median survival time from diagnosis of dementia was 5.1 (interquartile range 2.9–8.0) years for women and 4.3 (interquartile range 2.3–7.0) years for men. Predictors of mortality were higher age, male sex, increased comorbidity burden and lower cognitive function at diagnosis, a diagnosis of non-Alzheimer dementia, living alone, and using more medications. The developed prediction tables yielded c indexes of 0.70 (95% confidence interval [CI] 0.69–0.71) to 0.72 (95% CI 0.71–0.73) and showed good calibration.

Conclusions

Three-year survival after dementia diagnosis can be predicted with good accuracy. The survival prediction tables developed in this study may aid clinicians and patients in shared decision-making and advance care planning.

*These authors contributed equally to this work.

From the Department of Geriatric Medicine (M.L.H., M.G.M.O.R., R.J.F.M.), Radboudumc Alzheimer Center, Radboud Institute for Health Sciences, Radboud University Medical Center, Nijmegen, the Netherlands; Aging Research Center (M.L.H., D.R.), Department of Neurobiology, Care Sciences and Society, Karolinska Institutet, Solna; Division of Clinical Geriatrics (M.E., S.G.-P.), Department of Neurobiology, Care Sciences and Society, Karolinska Institutet; Theme Aging (M.E., S.G.-P.), Karolinska University Hospital, Huddinge, Sweden; Department of Psychiatry (J.-M.S.L.), Division of Geriatric Psychiatry and Neuropsychiatry, Johns Hopkins University School of Medicine, Baltimore, MD; Radboud University Medical Center (M.G.M.O.R.), Donders Institute for Brain, Cognition and Behaviour, Department of Geriatric Medicine, Radboudumc Alzheimer Center, Nijmegen, the Netherlands; and Department of Internal Medicine (S.G.-P.), Section for Neurology, Södersjukhuset Stockholm, Sweden.

Go to [Neurology.org/N](https://www.neurology.org/N) for full disclosures. Funding information and disclosures deemed relevant by the authors, if any, are provided at the end of the article.

The Article Processing Charge was funded by FORTE Swedish Research Council for Health, Working Life and Welfare.

This is an open access article distributed under the terms of the Creative Commons Attribution License 4.0 (CC BY), which permits unrestricted use, distribution, and reproduction in any medium, provided the original work is properly cited.

Glossary

AD = Alzheimer disease; **CCI** = Charlson Comorbidity Index; **CI** = confidence interval; **HR** = hazard ratio; **ICD-10** = *International Classification of Diseases, 10 revision*; **IQR** = interquartile range; **MMSE** = Mini-Mental State Examination; **SveDem** = Svenska Demensregistret.

Dementia is a neurodegenerative syndrome accompanied by increased morbidity and mortality.^{1–3} The prevalence of dementia is expected to increase because of longer life expectancies around the globe; the proportion of people dying with or due to dementia also will grow.⁴

The *Lancet* Commission on Dementia Prevention, Intervention and Care has emphasized the importance of discussing the future with patients and their families and considering the needs and wishes of patients toward the end of life.⁴ Clinical guidelines also recommend incorporating information on patients' life expectancy into clinical decisions.⁵ However, clinicians appear to encounter several barriers in this process.^{6,7} One of the barriers for the incorporation of patient's life expectancy in clinical decisions is the uncertainty in predicting the actual survival probabilities. Another barrier is the difficulty of discussing prognosis with the patient.⁶ The uncertainty in predicting survival probabilities is caused partly by the lack of a proper prediction model.

Discussing a patient's prognosis can be facilitated by a clear tool that visualizes patients' prognosis on the basis of their personal and clinical characteristics. Timely communication about patients' survival prognosis may enhance advance care planning and shared decision-making in dementia. In the present study, we focus on patients with a diagnosis of dementia from the Swedish Dementia Registry (Svenska Demensregistret [SveDem]). The aims of this study were to predict their survival using routinely collected patient characteristics and to develop risk tables that can be used to improve the communication of patients' prognosis in clinical practice.

Methods

Data sources

This cohort study is based on patients registered with SveDem from May 2007 to December 2015. SveDem (svedem.se) is a national quality registry for monitoring the diagnosis, treatment, and care of people with dementia in Sweden.⁸ In December 2015, SveDem included a total of 58,154 individuals meeting the ICD-10 criteria for dementia.⁹ All patients in our cohort are people with incident dementia diagnoses from either primary care or specialist memory clinics. The Swedish Death Registry was used to obtain dates of death for patients up until August 28, 2016. This registry is maintained by Statistics Sweden and covers 100% of all deaths in Sweden.¹⁰ The Swedish Prescribed Drug Register was used to obtain

information on drug use. All prescribed drugs provided through the pharmacy were recorded in this register. The Swedish National Patient Register was used to obtain medical diagnoses of patients in the cohort. This register contained medical diagnoses from inpatient and specialized outpatient visits in Sweden from 2000 to 2014, classified according to the ICD-10 criteria. Both the National Patient Register and the Prescribed Drug Register are maintained by the National Board of Health and Welfare; together, they cover >99% of all inpatient medical diagnoses and expedited drugs.^{11,12}

Assessment of demographic, medical, and medication data

Demographic data at the moment of diagnosis were obtained from SveDem and included age, sex, living situation (living at home alone, living at home with a coresident, or institutionalized), Mini-Mental State Examination (MMSE) score (range 0–30),¹³ and dementia type. Dementia diagnoses were coded as Alzheimer disease (AD), vascular dementia, mixed dementia (AD and vascular dementia), dementia with Lewy bodies, frontotemporal dementia, Parkinson disease dementia, unspecified dementia, and other dementia types. A detailed description of the diagnostic criteria can be found elsewhere.⁸ The number of expedited drugs during the 3 months before dementia diagnosis was extracted from the Swedish Prescribed Drug Register. The medical diagnoses up until the moment of dementia diagnosis were selected from the Swedish National Patient Register and used to calculate the Charlson Comorbidity Index (CCI) score (range 0–16).¹⁴

Study population

We selected people with late-onset dementia, that is, persons who were ≥ 65 years of age at the time of dementia diagnosis ($n = 55,578$). Patients who lacked information on explanatory variables ($n = 5,487$; 9.9%) or follow-up time ($n = 15$) were excluded, yielding a total of 50,076 patients. A flowchart of the sample selection process is available from Dryad (figure e-1, doi.org/10.5061/dryad.p46tr17). Missing explanatory variables were MMSE score ($n = 2,618$), living situation ($n = 668$), or dementia type in the memory clinic setting ($n = 2,525$). Compared to included patients, patients who were excluded due to missing values scored lower on the MMSE ($\Delta = -0.93$ point, $p < 0.001$) and used more drugs ($\Delta = 0.38$, $p < 0.001$). Although the median survival was somewhat shorter among the excluded patients (median survival time 4.3 [interquartile range (IQR) 2.3–6.9] years compared to 4.8 [IQR 2.6–7.6] years in the included cohort, log-rank $p < 0.001$), they did not differ from the included patients in terms of age, CCI score, and sex.

Statistical analysis

To predict survival, we used routinely collected characteristics measured at the moment of diagnosis. These included age, sex, dementia type, living situation, MMSE score, CCI score, and number of drugs used in the 3 months before diagnosis. Survival time was measured beginning on the date of diagnosis. The last recorded date of death (August 28, 2016) was used as a censoring date for survivors. Kaplan-Meier estimates were used to assess the median and IQR of survival times in different population strata. Cox proportional hazards models were used to calculate hazard ratios (HRs) with 95% confidence intervals (CIs) for mortality.¹⁵ The assumption of proportionality was verified by examining log minus log plots and Schoenfeld residuals. The different dementia diagnoses were grouped according to their HR: types that did not differ significantly from each other (i.e., with similar HRs) were combined. Dementia subtype was often unspecified for patients diagnosed in primary care settings; hence, we built separate prediction models for patients from primary care and memory clinics. In the models for patients diagnosed in memory clinics, dementia subtype was included as a predictor of survival, whereas this covariate was excluded in the models for primary care patients. A forward selection procedure was used to select significant predictors of survival ($p < 0.05$). To derive a practical tool from the prediction models, we created risk tables showing the 3-year survival probabilities for several combinations of predictor values (i.e., risk factor profiles). To provide a concise yet discriminatory and accurate tool, we used the order of entering from the forward selection procedure to select the 5 strongest predictors for inclusion in our risk tables.

We assessed the performance of our models by examining the discrimination and calibration.¹⁶ To assess the discriminative ability of the model, the Harrell *c* index (i.e., a concordance statistic) was calculated. This index ranges from 0 to 1, with higher values denoting a higher ability of the model to discriminate between patients who survived and those who died. To determine the prognostic accuracy of the model, the agreement between predicted and observed survival curves was visually assessed with calibration plots. To assess the internal validity of our developed models, we calculated shrinkage factors and the optimism in the Harrell *c* indexes through bootstrap cross-validation (150). To compare included patients with those who were excluded due to missing values, we used 1-sample *t* tests and χ^2 tests. Statistical analyses were conducted with SAS version 9.4 (SAS Institute Inc, Cary, NC), supplemented by the macros `survcstd`,¹⁷ `calibrationplots`, and `OptimismShrinkageCox`.

Standard protocol approvals, registrations, and patient consents

Ethics permission for this study was obtained from the regional human ethics committee of Stockholm (2015/743-31/4). Quality registries such as SveDem are considered an important part of the development and improvement of health and social care in Sweden. Each patient has to be informed about the registration and has the right to decline participation. Written

consent is not required; however, each patient has the right to obtain a copy of the information that is registered if requested and to withdraw consent.

Data availability

Requests for access to the SveDem data should be addressed to the registry holder and the steering committee (svedem.se).

Results

Sample characteristics

A total of 50,076 patients from 829 Swedish health centers were included in the analysis, with a maximum follow-up time of 9.7 years. Median age at diagnosis was 81.6 (IQR 76.5–86.0) years, and the median time to death was 4.8 (IQR 2.6–7.6) years. The most common dementia type was AD ($n = 15,945$, 31.8%), followed by mixed dementia ($n = 10,226$, 20.4%) and vascular dementia ($n = 10,040$, 20.0%). There were 10,298 patients with an unspecified dementia type (20.6%). The majority of the sample was female (59.4%) and living at home (90.4%). People diagnosed in primary care were older ($\Delta = 3.0$, $p < 0.001$), were more often female ($\chi^2 = 111.4$, $p < 0.001$), and had a lower MMSE score ($\Delta = -0.8$, $p < 0.001$) compared to people diagnosed in memory clinics. The sample characteristics at the moment of diagnosis are summarized in table 1.

Predictors of survival

After 9.7 years of follow-up, 20,828 patients (41.6%) had died (10,863 patients from primary care and 9,965 patients from the memory clinic setting). The estimated median survival time from diagnosis of dementia was 4.8 (IQR 2.6–7.6) years. Survival times stratified by risk factors for mortality are shown in table 2.

All included covariates depicted in table 2 were significant predictors of survival in univariable analyses and in the multivariable models. Moreover, patients diagnosed at memory clinics generally showed higher mortality risk compared to those diagnosed in primary care (HR 1.15, 95% CI 1.11–1.19) after correction for all included covariates. The results of the multivariable Cox regression models for survival across the entire follow-up period are depicted in table 3. Log minus log plots and Schoenfeld residuals showed no deviation from the proportional hazards assumption.

In the model for memory clinic patients, predictors were included in the following order by the forward selection procedure: age, global cognition, comorbidity, dementia subtype, sex, living situation, and number of drugs. The order of inclusion was the same for the model based on primary care patients except that comorbidity was included before global cognition and dementia subtype was not included in this model. There was a significant interaction between living situation and sex in our model for primary care patients. While

Table 1 Characteristics of people with dementia registered in the Swedish dementia registry

	Primary care (n = 27,930)	Memory clinic (n = 22,146)	Total sample (n = 50,076)
Median (IQR) age at diagnosis, y	82.9 (78.2–86.9)	79.6 (74.5–84.3)	81.6 (76.5–86.0)
Median (IQR) age at death, y ^a	87.2 (83.0–90.8)	84.6 (79.7–88.8)	86.0 (81.4–90.0)
Median (IQR) Mini-Mental State Examination score	21.0 (17.0–24.0)	22.0 (18.0–25.0)	21.0 (17.0–27.0)
Median (IQR) Charlson Comorbidity Index score	2.0 (1.0–3.0)	2.0 (1.0–3.0)	2.0 (1.0–3.0)
Median (IQR) No. of drugs	5.0 (2.0–7.0)	4.0 (2.0–7.0)	5.0 (2.0–7.0)
Sex, n (%)			
Female	17,162 (61.5)	12,575 (56.8)	29,737 (59.4)
Dementia type, n (%)			
Alzheimer disease	7,054 (25.3)	8,891 (40.2)	15,945 (31.8)
Mixed dementia (Alzheimer disease and vascular)	3,940 (14.1)	6,286 (28.4)	10,226 (20.4)
Vascular dementia	5,460 (19.6)	4,580 (20.7)	10,040 (20.0)
Lewy body dementia	177 (0.6)	902 (4.1)	1,079 (2.2)
Parkinson disease dementia	191 (0.7)	550 (2.5)	741 (1.5)
Frontotemporal dementia	122 (0.4)	479 (2.2)	601 (1.2)
Other dementia type	688 (2.5)	458 (2.1)	1,146 (2.3)
Unspecified type	10,298 (36.9)	—	10,298 (20.6)
Living situation, n (%)			
At home with coresident	12,110 (43.4)	11,739 (53.0)	23,849 (47.6)
At home without coresident	12,740 (45.6)	8,679 (39.2)	21,419 (42.8)
Institutionalized	3,080 (11.0)	1,728 (7.8)	4,808 (9.6)

Abbreviation: IQR = interquartile range.

^a N = 10,863 in primary care; n = 9,965 in memory clinics; and n = 20,828 in total sample.

living alone was a significant risk factor for mortality in men, this was not so for women. Forward selection of predictors showed that age, sex, comorbidity, and global cognition were the strongest predictors of survival in both diagnostic settings, in addition to dementia subtype for patients diagnosed at a memory clinic. To visualize the impact of these predictors on survival, risk tables were created for male and female patients from primary care and memory clinics. These tables show the 3-year survival probabilities for several risk factor profiles (memory clinic, figure 1; primary care, figure 2). For example, a 75-year-old patient with AD from a memory clinic who scores 25 on the MMSE and 3 on the CCI has a 3-year survival probability of 0.85 (95% CI 0.83–0.86). Standard errors of our estimated 3-year survival probabilities were all <0.04. Although significant in the multivariable model, the last 2 predictors included by the forward selection procedure, i.e., living situation and number of drugs, added little discriminatory value to our prediction model. This is shown by table 4, which lists the c indexes of models with increasing numbers of variables. The

increase in c index after the last 2 selection steps was very small. To provide a concise yet discriminatory and accurate tool, the variables living situation and number of drugs were not included in the figures. The HRs of our final models are shown in table 5.

Model performance

To evaluate the ability of our risk tables to discriminate between those who survived the first 3 years after diagnosis and those who did not, we calculated the c index on the basis of the predictors included in figures 1 and 2 (5 predictors for patients from a memory clinic, 4 predictors for patients from primary care). The c index of the model for memory clinic patients was 0.71 (95% CI 0.70–0.72) for men and 0.72 (95% CI 0.71–0.73) for women. The c index of the model for primary care patients was 0.70 (95% CI 0.69–0.71) for men and 0.71 (95% CI 0.70–0.71) for women. This is substantially higher than the c index based on age and sex only, which was 0.65 (95% CI 0.64–0.65). The calibration plots of the models

Table 2 Median (IQR) survival time in years stratified by risk factors

	Men (n = 20,339)		Women (n = 29,737)	
	Deaths/total, n	Median (IQR)	Deaths/total, n	Median (IQR)
Sex	9,241/20,339	4.3 (2.3–7.0)	11,587/29,737	5.1 (2.9–8.0)
Median age at diagnosis, y				
65–75	1,507/4,649	6.1 (3.7–9.0)	1,261/5,092	7.5 (4.6–NA)
75–85	4,770/10,657	4.4 (2.5–7.0)	5,231/14,659	5.6 (3.3–8.2)
≥85	2,964/5,033	2.8 (1.4–4.7)	5,095/9,986	3.6 (1.9–5.7)
Living situation				
At home together	5,680/13,406	4.7 (2.6–7.4)	3,409/10,443	6.0 (3.5–9.2)
At home alone	2,423/5,158	4.0 (2.2–6.4)	6,329/16,261	5.1 (2.9–7.8)
Nursing home	1,138/1,775	2.6 (1.3–4.5)	1,849/3,033	3.1 (1.6–5.5)
Mini-Mental State Examination score				
26–30	1,314/3,916	6.0 (3.5–9.3)	1,360/4,730	7.0 (4.3–NA)
22–25	2,628/6,424	4.9 (2.8–7.3)	3,222/9,368	5.7 (3.4–8.4)
18–21	2,391/5,039	3.8 (2.2–6.1)	3,057/7,910	4.9 (2.8–7.4)
0–17	2,908/4,960	3.0 (1.5–5.1)	3,948/7,729	3.7 (1.9–6.2)
Charlson Comorbidity Index score				
1	2,850/7,214	5.1 (3.0–8.0)	4,719/13,902	5.9 (3.6–8.9)
2	1,941/4,351	4.4 (2.5–7.1)	2,794/6,864	4.9 (2.7–7.5)
≥3	4,450/8,774	3.6 (1.9–6.1)	4,074/8,971	4.1 (2.1–6.9)
No. of medications				
0–2	2,362/5,644	4.8 (2.7–7.7)	2,721/8,086	5.9 (3.5–8.9)
3–5	3,055/6,864	4.5 (2.5–7.1)	3,609/9,490	5.3 (3.1–7.7)
6–8	2,279/4,821	4.0 (2.2–6.4)	2,930/7,168	4.8 (2.6–7.6)
≥9	1,545/3,010	3.5 (1.7–5.9)	2,327/4,993	4.0 (2.1–6.9)
Dementia type				
Alzheimer disease	2,197/5,615	5.2 (3.0–7.9)	3,413/10,330	5.1 (3.6–9.0)
Vascular dementia	2,372/4,734	3.9 (1.9–6.3)	2,304/5,306	4.4 (2.3–7.1)
Mixed dementia	2,009/4,147	4.0 (2.1–6.4)	2,607/6,079	4.8 (2.6–7.3)
Frontotemporal dementia	124/277	4.2 (2.4–NA)	129/324	5.1 (3.1–NA)
Lewy body dementia	357/648	3.4 (2.1–5.3)	203/431	4.3 (2.5–6.1)
Parkinson disease dementia	235/465	3.8 (2.2–5.6)	146/276	4.0 (2.2–6.3)
Other dementia type	219/531	4.5 (2.5–NA)	229/615	5.3 (2.9–NA)
Unspecified type	1,728/3,922	4.3 (2.3–7.0)	2,556/6,376	4.9 (2.7–7.4)

Abbreviations: IQR = interquartile range; NA = not available because of censored information on survival.

on which our tables were based showed strong agreement between predicted and observed survival curves, indicating good accuracy of our prediction (figures e-2 and e-3 available from Dryad, doi.org/10.5061/dryad.p46tr17). Bootstrapped

cross-validation procedures revealed shrinkage factors between 0.994 and 0.996 and optimism in the Harrell c index <0.001 for all of the 4 models on which the risk tables were based.

Table 3 Multivariable Cox regression models for the prediction of survival in people with dementia diagnosed in primary care and memory clinics

	Primary care (n = 27,930)		Memory clinic (n = 22,146)	
	HR (95% CI)	p Value	HR (95% CI)	p Value
Age	1.080 (1.076–1.084)	<0.001	1.064 (1.060–1.067)	<0.001
Male sex	1.441 (1.383–1.502)	<0.001	1.458 (1.397–1.521)	<0.001
MMSE score	0.964 (0.962–0.967)	<0.001	0.952 (0.949–0.955)	<0.001
CCI	1.143 (1.132–1.155)	<0.001	1.113 (1.101–1.125)	<0.001
No. of drugs	1.029 (1.024–1.035)	<0.001	1.018 (1.012–1.023)	<0.001
Living situation^a				
At home alone	1.049 (1.003–1.097)	0.0377	1.049 (1.002–1.098)	0.041
Institutionalized	1.231 (1.159–1.308)	<0.001	1.550 (1.447–1.661)	<0.001
Dementia subtype^b				
FTD/LBD/PDD	—	—	1.749 (1.625–1.882)	<0.001
VaD/mixed/other	—	—	1.238 (1.184–1.295)	<0.001

Abbreviations: CCI = Charlson Comorbidity Index (range 0–16; higher scores indicate more comorbidity); CI = confidence interval; FTD = frontotemporal dementia; HR = hazard ratio; LBD = Lewy body dementia; MMSE = Mini-Mental State Examination (range 0–30; higher scores indicate better cognitive performance); PDD = Parkinson disease dementia; VaD = vascular dementia.

Dementia subtype was excluded from the model for primary care because it was often unspecified in this setting.

^a Reference category for living situation is living at home with coresident.

^b Reference category for dementia subtype is Alzheimer disease.

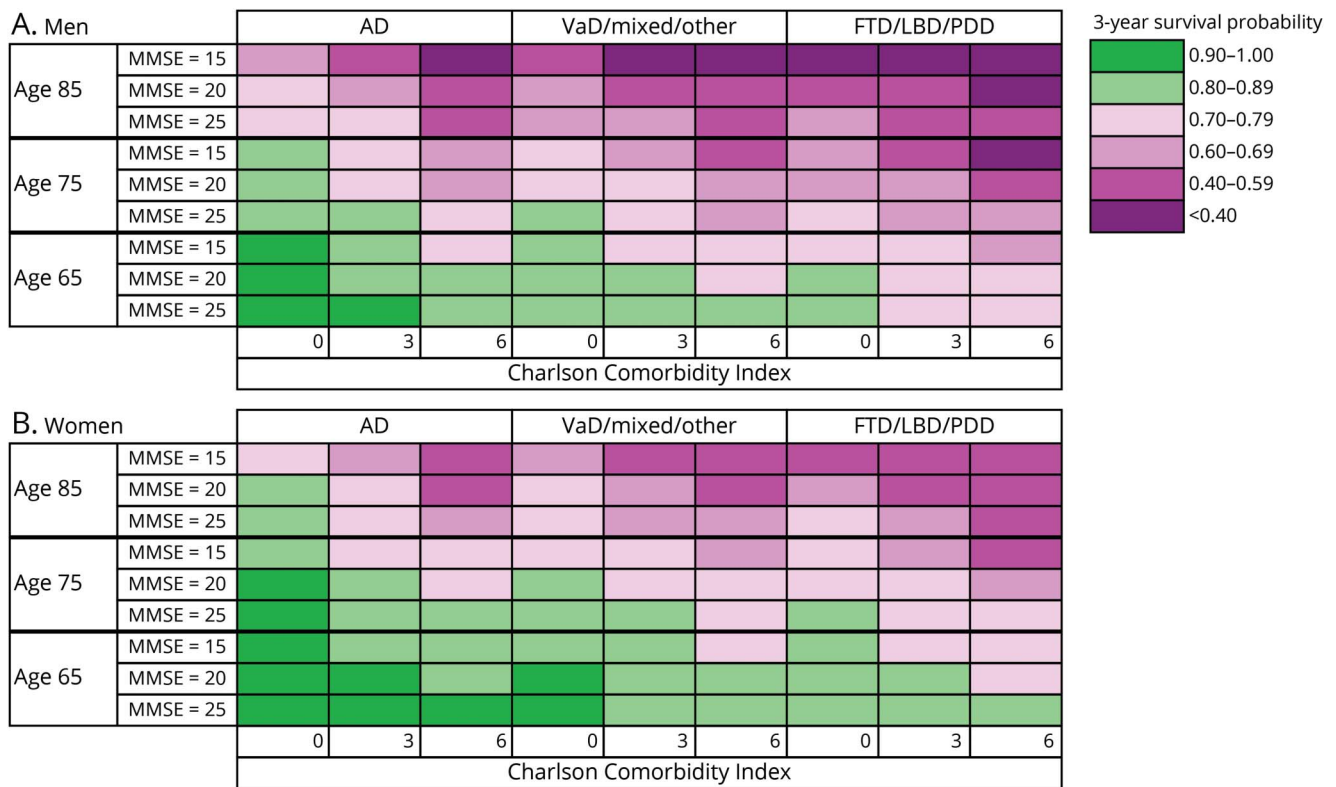
Discussion

This study shows that it is possible to provide accurate 3-year survival probabilities for patients with dementia in this nationwide Swedish patient registry on the basis of 5 (4 for primary care setting) characteristics obtained at diagnosis: age, sex, comorbidity status, cognitive performance, and dementia type. Mortality risk increased with increasing age, morbidity, and cognitive impairment. In accordance with the general population, in our study, men had a lower life expectancy than women. Moreover, patients with AD had a higher life expectancy compared to patients with non-AD dementia types. After correction for covariates, patients diagnosed at the memory clinic generally showed higher mortality risk compared to those diagnosed in primary care. The reason probably is that patients with more complex disease patterns (e.g., non-AD dementia with faster disease progression or more severe comorbidity) are more likely to be referred to a memory clinic. For this reason, we choose to stratify our results by diagnosis setting. This stratification reflects actual clinical practice because dementia subtype is often unspecified in patients diagnosed in primary care. The observed mean survival time was 5.1 (standard error 0.02) years in our cohort with a mean age of 81.1 years at diagnosis of dementia. In comparison, the average 80-year-old person in Sweden has a life expectancy of 9 years.¹⁸ This average is based on the general Swedish population, which includes a significant proportion of persons with dementia, so it should be noted that average survival for persons who do not develop dementia is expected to be even longer. These results are very similar to previously reported numbers from a UK

population study¹⁹ and fit with our current knowledge of the detrimental effect of dementia on life expectancy.

SveDem is the world's largest cohort of people with dementia, including all memory clinics and ≈75% of primary care facilities across Sweden. Therefore, this is one of the largest studies to date examining survival in dementia. Strengths compared to the previous SveDem study on survival²⁰ are the inclusion of patients diagnosed in primary care, comprehensive information on comorbidity burden, and more exact information on the number of medications. Moreover, by converting HRs into risk tables with 3-year survival probabilities, we have created one of the first tools to estimate survival of people with incident dementia diagnoses and to inform decision-making in clinical practice. Another strength of this study is the wide spectrum of dementia subtypes that have been distinguished in SveDem. Such detailed information is rarely encountered in studies assessing survival in dementia, and when this information is available, groups of patients with less common dementia types are often too small for meaningful subgroup analyses. Although our study population accurately reflects the Swedish population with a clinical diagnosis of dementia, it should be noted that dementia is generally known to be severely underdiagnosed.²¹ According to population-based studies, SveDem is estimated to cover ≈38% of the entire population with dementia in Sweden.²² The ascertainment of dates of death, medical diagnoses, and medications through national registers allowed complete follow-up and eliminated the risk of attrition and recall bias. The individuals excluded because of missing values for MMSE, dementia type, or living situation differed slightly from the

Figure 1 Three-year survival probabilities for (A) men and (B) women with dementia diagnosed in a memory clinic



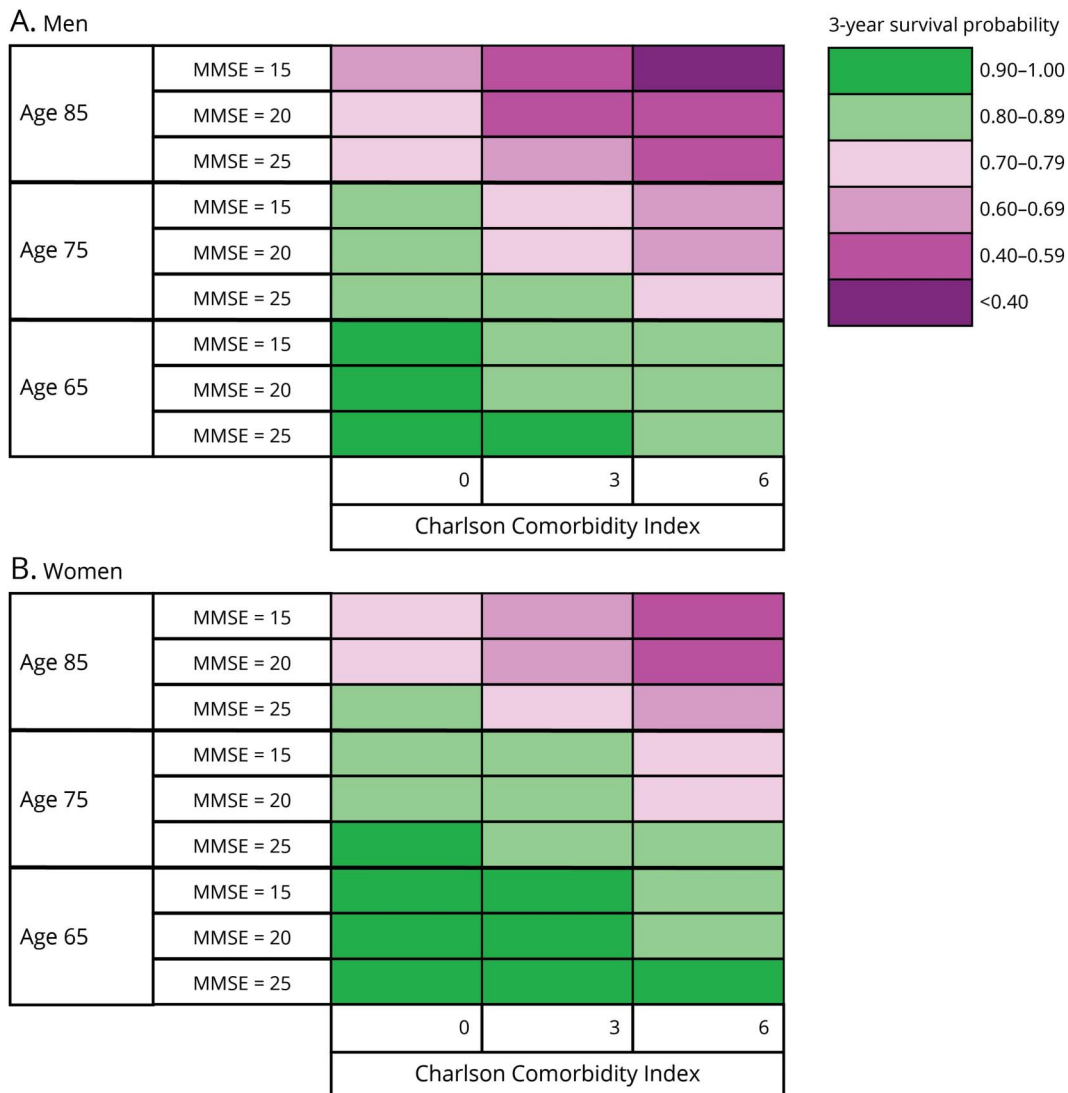
AD = Alzheimer disease; FTD = frontotemporal dementia; LBD = Lewy Body Dementia; MMSE = Mini-Mental State Examination; PDD = Parkinson disease dementia; VaD = vascular dementia.

study population in terms of survival, cognition, and medication use, which may have introduced selection bias. However, sensitivity analyses with worst-case and best-case scenarios indicated that the potential impact of selection bias is limited because the number of excluded individuals was <10% of our population. Although the Swedish National Patient Registry has >99% coverage of inpatient medical diagnoses, the primary care diagnoses are lacking, causing the prevalence of diseases such as diabetes mellitus (which is often diagnosed in primary care) to be underestimated. The effect of the CCI score observed in the present study may therefore also be underestimated. Unfortunately, more detailed information on a patient's physical health such as the severity of comorbidity, the number of hospitalizations, or the patient's frailty status was unavailable in SveDem. In addition, information on genetic factors and educational attainment was unavailable in this registry-based cohort. The medication data from the Swedish Prescribed Drug Register provide 100% coverage for all medications taken out of the pharmacy but do not include over-the-counter medication and medications given during hospital admission. Because the type of medication available over the counter is limited in Sweden, we do not expect this to have caused substantial bias.

Previous studies have predominantly emphasized the influence of single characteristics on survival. For example,

lower cognitive performance at the time of diagnosis appears to be related to an increased mortality risk in dementia in several studies.^{23,24} A Swedish population study showed that living alone shortened survival by 0.6 years among older people.²⁵ A 15-year follow-up study of people with dementia treated with cholinesterase inhibitors showed that impaired daily functioning and greater number of medications are associated with shorter survival after AD diagnosis.²⁶ Other previously reported risk factors for mortality in older people with and without dementia are increased frailty^{27,28} and multimorbidity.²⁹ Previous studies based on SveDem data also showed an association between dementia subtypes other than AD and mortality,²⁰ as well as an association between mortality and low body mass index.³⁰ Despite these extensive examinations of risk factors for mortality in dementia, the prognostic performance of multivariable prediction models for survival in dementia is rarely studied. In the present study, we used SveDem data to evaluate the performance (i.e., prognostic value) of a prediction model for survival based on routinely collected data. Our models had good predictive accuracy, as shown by the calibration plots, and the discriminative ability of the models appeared to be modest yet comparable to that of other clinical prediction models such as the Framingham Coronary Heart Disease Score.^{31,32} The high shrinkage factors and low optimism in the bootstrapped Harrell c index also indicated that our developed models

Figure 2 Three-year survival probabilities for (A) men and (B) women with dementia diagnosed in primary care



MMSE = Mini-Mental State Examination.

perform well in Swedish people diagnosed with dementia. We expect our findings to be fairly generalizable to people with dementia in other Western European countries, especially countries with similar population structures and health care systems. However, variations in population age, education levels, and ethnic composition across countries may decrease the performance of our model. Therefore, we recommend recalibrating the prediction model before applying it in other settings because our model has not yet been externally validated. Moreover, to provide a concise tool, we decided to include in our risk tables only those predictors found to be most important in our sample. The predictors that were not included in our risk tables, i.e., living situation and number of drugs, may have considerably more predictive value in other populations. Hence, external validation is important, and future studies may benefit from including all variables listed in table 3 because all were found to be significant predictors of survival.

In today's care system, shared decision-making for the planning of care and end-of-life decisions for persons with dementia and their caregivers is becoming increasingly important. With the rising prevalence of dementia, the need to provide personalized prognosis for dementia also is growing. For these reasons, it is more important than ever for clinicians to be able to provide accurate information on estimated survival. This study provides a practical tool to predict survival of people with dementia and thereby aid shared decision-making and advance care planning for this rapidly growing patient group. Moreover, this study provides estimates of median life expectancy for patients with dementia, stratified by patient characteristics. This type of detailed reference data is scarce in literature. We acknowledge that there are substantial barriers to providing numerical estimates of life expectancy to patients³³; both underestimation and overestimation of survival time may have a negative impact on patients and their

Table 4 Concordance statistics of models with increasing numbers of variables

Forward selection step ^a	Included variables	c Index ^b	95% CI
1	Age	0.6355	0.6313–0.6398
2	Age + MMSE score	0.6642	0.6601–0.6684
3	Age + MMSE score + CCI score	0.6889	0.6850–0.6929
4	Age + MMSE score + CCI score + dementia type	0.6979	0.6936–0.7023
5	Age + MMSE score + CCI score + dementia type + sex	0.7025	0.6982–0.7068
6	Age + MMSE score + CCI score + dementia type + sex + living situation	0.7048	0.7005–0.7093
7	Age + MMSE score + CCI score + dementia type + sex + living situation + drugs	0.7059	0.7016–0.7101

Abbreviations: CCI = Charlson Comorbidity Index; CI = confidence interval; MMSE = Mini-Mental State Examination.

^a Order of variable selection as observed in our model for memory clinic patients. The order of variable selection by the forward selection procedure in our primary care sample was comparable (living situation and number of drugs were also included last).

^b The c indexes are based on our entire sample consisting of patients from both memory clinics and primary care. Therefore, the c indexes are slightly lower than the stratified indexes reported in the article.

families. For this reason, we presented our results in the form of a color scheme representing 3-year survival probabilities, opposed to an estimate of remaining survival time used in a previously developed tool.³⁴ The risk tables presented in this study may help physicians incorporate patients' life expectancy into clinical decision-making. Rather than raising the (false) belief that an accurate estimate of remaining survival time can be given, the colors are intended to communicate an increasing urgency to consider advance care planning. Thus, the visual representation of 3-year survival probabilities may aid physicians in addressing the sensitive topic of end of life in conversations with patients and caregivers. This may be particularly important for patients at high risk of mortality who experience acute events that require possibly harmful interventions because these patients may decide to refuse treatment in favor of quality of life.³⁵ Informing patients and their families in a timely manner

about their prognosis will also allow them to make the arrangements needed to anticipate events associated with end of life such as nursing home placement.

This study showed that it is possible to stratify individuals with dementia into groups with distinct survival probabilities based on 5 easily obtainable variables. By providing more insight into patients' life expectancy, the developed risk tables may aid shared decision-making and advance care planning in dementia. Future studies should focus on determining the predictive performance of the model in other settings (i.e., external validity) and evaluating the impact of its implementation in clinical practice.³⁶

Acknowledgment

The authors thank biostatistician Dr. A.F.J. de Haan for his counselling and for developing the SAS macros calibrationplots

Table 5 Multivariable Cox regression models including the 5 strongest predictors of survival in people with dementia diagnosed in primary care and memory clinics (as visualized in figures 1 and 2)

	Primary care (n = 27,930)		Memory clinic (n = 22,197)	
	HR (95% CI)	p Value	HR (95% CI)	p Value
Age	1.082 (1.079–1.086)	<0.001	1.067 (1.063–1.070)	<0.001
Male sex	1.396 (1.342–1.451)	<0.001	1.409 (1.353–1.467)	<0.001
MMSE score	0.961 (0.959–0.964)	<0.001	0.949 (0.946–0.952)	<0.001
CCI	1.164 (1.153–1.175)	<0.001	1.128 (1.117–1.140)	<0.001
Dementia subtype^a				
FTD/LBD/PDD	—	—	1.854 (1.726–1.997)	<0.001
VaD/mixed/other	—	—	1.276 (1.221–1.334)	<0.001

Abbreviations: CCI = Charlson Comorbidity Index (range 0–16; higher scores indicate more comorbidity); CI = confidence interval; FTD = frontotemporal dementia; HR = hazard ratio; LBD = Lewy body dementia; MMSE = Mini-Mental State Examination (range 0–30; higher scores indicate better cognitive performance); PDD = Parkinson disease dementia; VaD = vascular dementia.

Dementia subtype was excluded from the model for primary care because it was often unspecified in this setting.

^a Reference category for dementia subtype is Alzheimer disease.

and OptimismShrinkageCox. The authors are grateful to SveDem (svedem.se) for providing the data for this study. They thank all patients, caregivers, reporting units, and coordinators in SveDem.

Study funding

SveDem is supported financially by the Swedish Associations of Local Authorities and Regions. This study was supported by the Swedish Research Council (FORTE; grants 2016-02317 and 2017-01646), Svenska Sällskapet för Medicinsk Forskning, the Swedish Order of St John, and grants from the Regional Agreement on Medical Training and Clinical Research (ALF) between Stockholm County Council and Karolinska Institutet, KI Foundation for Aging Related Diseases, Loo and Hans Osteman Foundation, and Alzheimer Nederland.

Disclosure

The authors report no disclosures relevant to the manuscript. Go to Neurology.org/N for full disclosures.

Publication history

Received by *Neurology* January 4, 2019. Accepted in final form July 25, 2019.

Appendix Authors

Name	Location	Role	Contribution
Miriam L. Haaksma, PhD	Radboud University Medical Center, Nijmegen, the Netherlands	Author	Design and conceptualized study; analyzed the data; performed statistical analysis; drafted the manuscript for intellectual content
Maria Eriksson, MD, PhD	Karolinska Institutet, Stockholm, Sweden	Author	Major role in the acquisition of data; revised the manuscript for intellectual content
Debora Rizzuto, PhD	Karolinska Institutet, Stockholm, Sweden	Author	Interpreted the data; revised the manuscript for intellectual content
Jeannie-Marie S. Leoutsakos, PhD	Johns Hopkins University School of Medicine, Baltimore, MD	Author	Interpreted the data; revised the manuscript for intellectual content
Marcel G.M. Olde Rikkert, MD, PhD	Radboud University Medical Center, Nijmegen, the Netherlands	Author	Interpreted the data; revised the manuscript for intellectual content
René J.F. Melis, MD, PhD	Radboud University Medical Center, Nijmegen, the Netherlands	Author	Design and conceptualized study; interpreted the data; revised the manuscript for intellectual content
Sara Garcia-Ptacek, MD, PhD	Karolinska Institutet, Stockholm, Sweden	Author	Interpreted the data; revised the manuscript for intellectual content

References

- Dewey ME, Saz P. Dementia, cognitive impairment and mortality in persons aged 65 and over living in the community: a systematic review of the literature. *Int J Geriatr Psychiatry* 2001;16:751–761.
- van de Vorst IE, Vaartjes I, Geerlings MI, Bots ML, Koek HL. Prognosis of patients with dementia: results from a prospective nationwide registry linkage study in the Netherlands. *BMJ Open* 2015;5:e008897.
- Rizzuto D, Bellocco R, Kivipelto M, Clerici F, Wimo A, Fratiglioni L. Dementia after age 75: survival in different severity stages and years of life lost. *Curr Alzheimer Res* 2012;9:795–800.
- Livingston G, Sommerlad A, Orgeta V, et al. Dementia prevention, intervention, and care. *Lancet* 2017;390:2673–2734.
- American Geriatrics Society Expert Panel on the Care of Older Adults With Multimorbidity. Guiding principles for the care of older adults with multimorbidity: an approach for clinicians. *J Am Geriatr Soc* 2012;60:E1–E25.
- Schoenborn NL, Bowman TL II, Cayea D, Pollack CE, Feeser S, Boyd C. Primary care practitioners' views on incorporating long-term prognosis in the care of older adults. *JAMA Intern Med* 2016;176:671–678.
- Tilburgs B, Vernooij-Dassen M, Koopmans R, van Gennip H, Engels Y, Perry M. Barriers and facilitators for GPs in dementia advance care planning: a systematic integrative review. *PLoS One* 2018;13:e0198535.
- Religa D, Fereshtehnejad SM, Cermakova P, et al. SveDem, the Swedish Dementia Registry: a tool for improving the quality of diagnostics, treatment and care of dementia patients in clinical practice. *PLoS One* 2015;10:e0116538.
- World Health Organization. The ICD-10 Classification of Mental and Behavioural Disorders: Diagnostic Criteria for Research. Geneva, Switzerland: World Health Organization; 1993.
- Ludvigsson JF, Almqvist C, Bonamy AKE, et al. Registers of the Swedish total population and their use in medical research. *Eur J Epidemiol* 2016;31:125–136.
- Ludvigsson JF, Andersson E, Ekblom A, et al. External review and validation of the Swedish National Inpatient Register. *BMC Public Health* 2011;11:450.
- Wettermark B, Hammar N, MichaelFored C, et al. The new Swedish Prescribed Drug Register: opportunities for pharmacoepidemiological research and experience from the first six months. *Pharmacoepidemiol Drug Saf* 2006;16:726–735.
- Folstein MF, Folstein SE, McHugh PR. Mini-Mental State: a practical method for grading the cognitive state of patients for the clinician. *J Psychiatr Res* 1975;12:189–198.
- Charlson ME, Pompei P, Ales KL, MacKenzie CR. A new method of classifying prognostic comorbidity in longitudinal studies: development and validation. *J Chronic Dis* 1987;40:373–383.
- Bradburn MJ, Clark TG, Love SB, Altman DG. Survival analysis part II: multivariate data analysis—an introduction to concepts and methods. *Br J Cancer* 2003;89:431–436.
- Vergouwe Y, Steyerberg EW, Eijkemans MJ, Habbema JD. Validity of prognostic models: when is a model clinically useful? *Semin Urol Oncol* 2002;20:96–107.
- Kremers WK. Calculates the c-statistic (concordance, discrimination index) for survived data with time dependant covariates and corresponding SE and 100(1-alpha)% CI. Available at: mayo.edu/research/documents/survcstdsas/doc-10027180. Accessed July 26, 2015.
- Statistiska centralbyrån Sverige (Statistics Sweden). Population by age and sex. Year 2017–2110. Available at: statistikdatabasen.scb.se/pxweb/en/ssd/START__BE__BE0401__BE0401A/Befolkpr_ognRev2017/. Accessed March 22, 2018.
- Xie J, Brayne C, Matthews FE. Survival times in people with dementia: analysis from population based cohort study with 14 year follow-up. *BMJ* 2008;336:258–262.
- Garcia-Ptacek S, Farahmand B, Kareholt I, Religa D, Cuadrado ML, Eriksson M. Mortality risk after dementia diagnosis by dementia type and underlying factors: a cohort of 15,209 patients based on the Swedish Dementia Registry. *J Alzheimers Dis* 2014;41:467–477.
- Connolly A, Gaehl E, Martin H, Morris J, Purandare N. Underdiagnosis of dementia in primary care: variations in the observed prevalence and comparisons to the expected prevalence. *Aging Ment Health* 2011;15:978–984.
- Svenska Demensregistret. Årsrapport [annual report]. Stockholm, Sweden: Svenska Demensregistret; [Swedish Dementia Registry]; 2015. Available at: <https://www.ucl.ac.uk/svedem/om-svedem/arsrapporter/svedem-arsrapport2015/download>.
- Carcaillon L, Peres K, Pere JJ, Helmer C, Orgogozo JM, Dartigues JF. Fast cognitive decline at the time of dementia diagnosis: a major prognostic factor for survival in the community. *Demen Geriatr Cogn Disord* 2007;23:439–445.
- Ruitenbergh A, Kalmijn S, de Ridder MAJ, et al. Prognosis of Alzheimer's disease: the Rotterdam Study. *Neuroepidemiology* 2001;20:188–195.
- Pimouget C, Rizzuto D, Schon P, et al. Impact of living alone on institutionalization and mortality: a population-based longitudinal study. *Eur J Public Health* 2016;26:182187.
- Wattmo C, Londos E, Minthon L. Risk factors that affect life expectancy in Alzheimer's disease: a 15-year follow-up. *Demen Geriatr Cogn Disord* 2014;38:286–299.
- Solfrizzi V, Scafato E, Frisardi V, et al. Frailty syndrome and all-cause mortality in demented patients: the Italian Longitudinal Study on Aging. *Age* 2012;34:507–517.
- Kelaiditi E, Andrieu S, Cantet C, Vellas B, Cesari M. Frailty index and incident mortality, hospitalization, and institutionalization in Alzheimer's disease: data from the ICTUS study. *J Gerontol A Biol Sci Med Sci* 2016;71:543–548.

29. Rizzuto D, Melis RJF, Angleman S, Qiu C, Marengoni A. Effect of chronic diseases and multimorbidity on survival and functioning in elderly adults. *J Am Geriatr Soc* 2017;65:1056–1060.
30. Garcia-Ptacek S, Kareholt I, Farahmand B, Cuadrado ML, Religa D, Eriksdotter M. Bodymass index and mortality in incident dementia: a cohort study on 11,398 patients from SveDem, the Swedish Dementia Registry. *J Am Med Dir Assoc* 2014;15:447.e441–447.
31. D'Agostino RB, Pencina MJ, Massaro JM, Coady S. Cardiovascular disease risk assessment: insights from Framingham. *Glob Heart* 2013;8:11–23.
32. van de Vorst IE, Vaartjes J, Bots ML, Koek HL. A Prediction Model for One and Three Year Mortality in Dementia: Results From a Nationwide Hospital-Based Cohort of 50,993 Patients in the Netherlands: Prognosis of Dementia: Utrecht: Utrecht University; 2016:175–188.
33. van der Steen JT, Albers G, Licht-Strunk E, Muller MT, Ribbe MW. A validated risk score to estimate mortality risk in patients with dementia and pneumonia: barriers to clinical impact. *Int Psychogeriatrics* 2010;23:31–43.
34. Stern Y, Tang MX, Albert M, et al. Calculator for predicted time to nursing home care and death in individuals with Alzheimer disease [online]. Available at: cumc.columbia.edu/dept/sergievsky/predictor.html. Accessed August 30, 2018.
35. van der Steen JT, Lane P, Kowall NW, Knol DL, Volicer L. Antibiotics and mortality in patients with lower respiratory infection and advanced dementia. *J Am Med Dir Assoc* 2012;13:156–161.
36. Kappen TH, van Klei WA, van Wolfswinkel L, Kalkman CJ, Vergouwe Y, Moons KGM. Evaluating the impact of prediction models: lessons learned, challenges, and recommendations. *Diagn Prognostic Res* 2018;2:11.