

Water-Limiting Conditions Alter the Structure and Biofilm-Forming Ability of Bacterial Multispecies Communities in the Alfalfa Rhizosphere

Pablo Bogino, Ayelén Abod, Fiorela Nieves, Walter Giordano*

Departamento de Biología Molecular, Facultad de Ciencias Exactas, Físico-Químicas y Naturales, Universidad Nacional de Río Cuarto, Río Cuarto, Córdoba, Argentina

Abstract

Biofilms are microbial communities that adhere to biotic or abiotic surfaces and are enclosed in a protective matrix of extracellular compounds. An important advantage of the biofilm lifestyle for soil bacteria (rhizobacteria) is protection against water deprivation (desiccation or osmotic effect). The rhizosphere is a crucial microhabitat for ecological, interactive, and agricultural production processes. The composition and functions of bacterial biofilms in soil microniches are poorly understood. We studied multibacterial communities established as biofilm-like structures in the rhizosphere of *Medicago sativa* (alfalfa) exposed to 3 experimental conditions of water limitation. The whole biofilm-forming ability (WBFA) for rhizospheric communities exposed to desiccation was higher than that of communities exposed to saline or nonstressful conditions. A culture-dependent ribotyping analysis indicated that communities exposed to desiccation or saline conditions were more diverse than those under the nonstressful condition. *16S rRNA* gene sequencing of selected strains showed that the rhizospheric communities consisted primarily of members of the Actinobacteria and α - and γ -Proteobacteria, regardless of the water-limiting condition. Our findings contribute to improved understanding of the effects of environmental stress factors on plant-bacteria interaction processes and have potential application to agricultural management practices.

Citation: Bogino P, Abod A, Nieves F, Giordano W (2013) Water-Limiting Conditions Alter the Structure and Biofilm-Forming Ability of Bacterial Multispecies Communities in the Alfalfa Rhizosphere. PLoS ONE 8(11): e79614. doi:10.1371/journal.pone.0079614

Editor: Eshel Ben-Jacob, Tel Aviv University, Israel

Received: July 25, 2013; **Accepted:** September 26, 2013; **Published:** November 4, 2013

Copyright: © 2013 Bogino et al. This is an open-access article distributed under the terms of the Creative Commons Attribution License, which permits unrestricted use, distribution, and reproduction in any medium, provided the original author and source are credited.

Funding: This work was supported by grants from the Secretaría de Ciencia y Técnica de la UNRC, Agencia Nacional de Promoción Científica y Tecnológica (ANPCyT) and Consejo Nacional de Investigaciones Científicas y Técnicas of the República Argentina (CONICET). AA and FN were supported by a fellowship from the CONICET. PB and WG are Career Members of CONICET. The funders had no role in study design, data collection and analysis, decision to publish, or preparation of the manuscript.

Competing interests: The authors have declared that no competing interests exist.

* E-mail: wgiordano@exa.unrc.edu.ar

Introduction

Bacteria living in terrestrial environments are normally organized as multicellular aggregates that develop on a variety of surfaces. These aggregates are highly complex communities, and this lifestyle (termed "biofilm") facilitates survival and resource optimization in hostile environments [1]. Potera (1996) [2] estimated that bacteria attached to surfaces and organized in biofilms are responsible for >99% of all bacterial activity in natural ecosystems. Soil bacteria occupy various microenvironments, including the rhizosphere (rich in nutrients derived from root exudates) and bulk soil (deficient in nitrogen, phosphorus, water, and other nutrients). Most soil bacteria are presumed to live as biofilms adhered to various soil surfaces (including soil particles, organic matter detritus, and roots) and to derive an advantage from this lifestyle. Protection from desiccation in water-deficient environments is considered to be a crucial advantage for rhizobacteria [3,4].

Most naturally occurring biofilms are taxonomically and functionally complex assemblies consisting of multiple bacterial species [5]. Little is known regarding the composition and functioning of biofilms in the soil [6] because of difficulties in studying the lifestyles of bacteria in edaphic microenvironments [7].

The rhizosphere is the soil niche influenced by plant roots [8]. It is a dynamic and complex microenvironment characterized by a wide variety of interactions between bacteria and plants. Rhizosphere colonization depends on migration of bacteria from the bulk soil to rhizospheric soil that is tightly associated with plant roots. Bacteria must have the ability to establish themselves as microcolonies in order to be successful in this microenvironment [9]. Because of the essential role of biofilm development in bacterial survival and physiology, these bacterial communities must establish themselves as a multispecies biofilm at the rhizospheric level [10-12]. Biofilms are the primary structures from which bacteria

play their roles in nutrient cycling [8], interactions (either beneficial or deleterious) with plants and other eukaryotes [13], reduction of biotic or abiotic plant stress factors [14], and enhancement of agricultural productivity [15]. Because they depend on organic materials derived from plant roots, rhizospheric bacterial communities are abundant, diverse, and subject to variability as a function of fluctuations in environmental factors such as water availability [16].

Terrestrial bacterial communities are exposed to various environmental stressors, of which limited water availability is typically the most critical and has the greatest effect on survival and activity of these communities [17]. The availability of water in soils (water potential, ψ) depends on dissolved solutes (osmotic potential) and characteristics of the matrix environment (matric potential; water retention force on the ground) [18]. These two potentials represent different types of water deprivation that may affect bacterial physiology in different ways. Our understanding of the mechanisms used by bacteria to grow and survive in environments subject to desiccation remains limited and fragmentary.

Degradation of soil quality resulting from desiccation and salinity is one of the most severe and widespread problems in modern agriculture and has been estimated to affect ~40% of potentially cultivable land worldwide [19]. The impact of these environmental stressors on soil bacteria is often dramatic [20,21]. For example, desiccation and salinity inhibit legume-rhizobia interactions and associated biological nitrogen fixation. Biofilms of *Pseudomonas putida* were shown to undergo changes in architecture and exopolysaccharide (EPS) composition to create a more hydrated microenvironment in response to water-limiting conditions [6].

Many studies have addressed the effects of desiccation on the survival, storage, and application of inoculants [22-24], but very few have focused on soil bacteria. The impact of drying on rhizobacteria is therefore poorly understood, and many questions regarding the physiological responses of soil bacteria (including biofilm formation ability) remain unanswered. The tolerance of rhizobia to desiccation may be an indirect result of cellular adaptation to osmotic, thermal, and oxidative stresses [25]. Overlap may exist among the mechanisms of tolerance to these stresses, resulting in redundancies of the regulatory pathways responsible for general and specific responses to stress [26]. There is no evidence to date of biochemical or physiological impacts on biofilm formation by soil bacteria exposed to water-limiting conditions.

Legumes are ecologically and economically important because of their ability to fix atmospheric nitrogen through their symbiotic relationship with rhizobia; this ability can reduce fertilizer use and environmental pollution [27]. *Medicago sativa* L. (alfalfa) is an important legume species widely cultivated in temperate areas as high-quality forage for livestock. It is also a commonly used model for studies of symbiosis with the nitrogen-fixing bacterium *Ensifer meliloti* [28,29] and a key agricultural crop in crop rotation and land restoration practices [30]. A number of genetic studies have been conducted using *E. meliloti* strains obtained from root nodules [31-34], but few have utilized bacteria recovered from alfalfa rhizospheric soil [35,36]. The characterization of bacterial communities

associated as biofilm "microconsortia" in the alfalfa rhizosphere is highly desirable to help clarify the role of changes in such communities under water-limiting conditions.

The majority of studies on bacterial community structure have focused on effects related to plant traits, agricultural management, or soil properties [37-39]. Few studies have assessed the effects of water-limiting conditions on bacterial communities established as biofilms in the alfalfa rhizosphere, and none have addressed the whole biofilm-forming ability (WBFA) or diversity of such microconsortia. Bacteria-plant interactions are crucial for a variety of ecosystem processes. It is therefore important to elucidate the structure and function (e.g., whole biofilm development) of bacterial rhizospheric communities exposed to water-limiting conditions in order to better understand the mechanisms involved in crop plant growth, adaptability to stressful conditions, and responses to agricultural practices.

We studied the size, WBFA, structure, and species composition of cultivable bacterial communities established as biofilm structures (microconsortia) in the alfalfa (*M. sativa*) rhizosphere under three water availability conditions: nonstressful (control), desiccation, and saline. These communities were analyzed at the physiological level by measuring their biofilm-forming ability (BFA) and at the structural level by using 16S rRNA gene analysis (ribotyping and sequencing). This study is one of the first to evaluate the environmental and physiological factors that interact with and affect alfalfa-associated rhizobacteria.

Materials and Methods

Soil and sampling procedure

The soil sampled was a typical haplustol, loam/sandy loam, well drained and prone to desiccation. Samples of the top portion of bulk soil (0-20 cm) were collected during the winter season (June 2012) from various locations in a forage field that is typically used for cultivating alfalfa (for feeding livestock) with rotation to grain crops such as maize, wheat, and oats. The field is in the Bulnes locality in the agricultural region of the Argentinean Pampas, in the dairy farming area in southern Córdoba province (33°31'41"S, 64°39'00"W). The study was conducted on a privately owned field with the permission of the land owner, and did not involve endangered or protected species. Each soil sample was immediately mixed, sieved to remove plant detritus, placed in a sterile plastic bag, transported to the laboratory in an ice cooler, and stored at 4 °C until analysis. The humidity content (H%) at the time of sampling was 6.7%. The electrical conductivity (EC) was 0.17 dS m⁻¹.

Soil treatments

Experimental pots were filled with 2 kg of soil each. Alfalfa seeds (Pampeana Córdoba cultivar) were sown so as to uniformly cover the pot surface and to reflect the typical field density of 25 kg alfalfa seed per hectare. Potted plants were grown in a greenhouse under controlled conditions of 16/8 h light/dark at 28/24 °C. The three experimental treatments, with 4 pots per treatment, were: (1) nonstressful conditions (control)

(regular watering; final H 13.4%; EC 0.17 dS m⁻¹) (2), desiccation stress (limited watering; final H 4.2%; EC 0.18 dS m⁻¹), and (3) saline stress (regular watering; final H 12.2%; added with 2.5 g NaCl per kg soil; EC 2.54 dS m⁻¹; resulting in a slightly saline soil). The rhizospheric soils obtained from these 3 treatments were termed respectively as CRS (Control Rhizospheric Soil), DRS (Desiccated Rhizospheric Soil), and SRS (Saline Rhizospheric Soil).

Sampling of rhizospheric soils

Fifty days after germination (F2 growth stage; preflowering) all plants growing in a given pot were removed to obtain rhizospheric soil samples for each condition (CRS, DRS, SRS). Suspensions of rhizospheric soils were obtained as described previously [40], with some modifications. In brief, roots were (i) shaken manually to carefully separate soil not tightly adhered to the root systems, (ii) placed in a sterile Erlenmeyer flask containing 100 ml phosphate-buffered saline (PBS; pH 7.4), and (iii) subjected to rotary shaking at 150 rpm for 1 h. Bacterial counting and isolation were performed on "rhizospheric soil suspensions" following removal of roots. Our rhizospheric soil suspensions contained bacteria from soil particles that were tightly associated with roots as well as bacteria adhered to root surfaces. We assume that the bacteria in the suspensions were representative of the bacteria present in the multispecies biofilm community. Following the microbiological analyses, the suspensions were dried and weighed so that results could be expressed per g rhizospheric soil.

Bacterial counting and isolation

Immediately after the rhizospheric soil suspensions as above were obtained, a series of 10-fold dilutions were made and placed on dishes with nonselective Nutrient Agar (NA) medium supplemented with 60 µg ml⁻¹ cycloheximide to inhibit fungal growth. Three replicate plates were made for each dilution. The plates were incubated at 28 °C for 2-7 days, and bacteria were counted. The number of bacteria was expressed as log₁₀ colony-forming units (CFU) per g dried rhizospheric soil. For each treatment, a total of 95 colonies were isolated randomly from the plate counts of the highest dilution, representing the most abundant bacterial members of each rhizospheric community. Selected strains were grown on LB medium [41] until the late exponential phase and stored at -80 °C in 20% glycerol solution.

Biofilm-forming ability (BFA) assay

BFA was determined macroscopically by a quantitative assay using 96-well microtiter dishes as described by O'Toole and Kolter (1998) [42]. Bacterial preinocula were grown in 2 ml TY medium [43] and incubated with agitation for 48 h at 28 °C. The cultures were diluted with fresh medium to give an OD₆₂₀ of 0.01, and 100 µl of each bacterial suspension was added to each well and incubated for 24 h at 30 °C. Bacterial growth was quantified by measuring the absorbance of planktonic cells in each well at OD₆₂₀ with a MicroELISA Auto Reader (Series 700 Microplate Reader; Cambridge Technology). Planktonic cells were then removed, each well was washed 3 times with saline

solution, and cells adhered to the polystyrene support (i.e., biofilm) were stained with 180 µl crystal violet (0.1%) for 15 min. The wells were rinsed repeatedly with distilled water, and biofilm formation was assayed by addition of 150 µl of 95% ethanol. The OD₅₇₀ of solubilized crystal violet was measured with a MicroELISA Auto Reader as above. Parallel, sterile control cultures were established in TY medium. Relative BFA was calculated as OD₅₇₀/OD₆₂₀ (biofilm quantified by staining with crystal violet relative to planktonic growth measurement). The above methodology was employed for various purposes. For the 3 types of bacterial communities (CRS, DRS, SRS), each consisting of ~95 strains, we obtained a WBFA value based on the mean value of 96-well microtiter dishes obtained from five replicates. We ordered the strains according to their BFA values and selected subpopulations of 15 strains with high BFA (HBFA) and 15 strains with low BFA (LBFA) from each community for genotypic characterization, as described below.

Characterization of alfalfa rhizospheric communities by 16S rRNA gene analysis

A total of 90 bacterial strains (30 for each community or treatment, divided into subpopulations of 15 HBFA and 15 LBFA strains as described above) were characterized by Amplified Ribosomal DNA Restriction Analysis (ARDRA). Bacterial genomic DNA was extracted from each isolate using a Genomic DNA Purification kit (Thermo Scientific/ Fermentas Life Science, USA), according to the manufacturer's instructions. Primers fD1 (5'-AGAGTTTGATCCTGGCTCAG-3') and rD1 (5'-AAGGAGGTGATCCAGCC-3') [44] were used for 16S rRNA gene amplification. Aliquots of PCR products, each ~1500 bp, were digested by restriction endonuclease HaeIII (Thermo Scientific/ Fermentas) [45]. DNA digestion fragments were separated electrophoretically on a 3% (w/v) agarose gel, stained with ethidium bromide, visualized under UV illumination, and photographed. The identification of each ribotype was associated with a particular digestion fingerprint. Diagrams of community structure were constructed based on the ribotypes found. Strains belonging to either majority unique ribotypes from a particular treatment or common ribotypes present for all 3 treatments were selected for further characterization by identification through 16S rRNA gene nucleotide sequence analysis and study of traits related to BFA.

16S rRNA gene nucleotide sequence analysis

The nucleotide sequence of 16S rRNA gene was analyzed for a total of 13 bacterial strains from the 3 types of rhizospheric soil (strains C3, C7, C12, C29, and C35 strains from CRS; M1, M10, M29, and M32 from DRS; S2, S13, S36, and S37 from SRS) (Table 1). Direct PCR was performed with 1 µl DNA template in a 20 µl PCR reaction mixture containing the universal primers 27F (5'-AGAGTTTGATCCTGGCTCAG-3') and 1492R (5'-TACGGTTACCTTGTACGACTT-3') [46]. Purified PCR products (each ~1400 bp) were sequenced with an automated DNA sequencing system (model 3730XL, Applied BioSystems, USA) by Macrogen Inc. Laboratories (Seoul, South Korea). The 16S rRNA gene sequences were analyzed using the BLAST search program (National Center for

Table 1. Identities and BFA-related traits of bacterial strains isolated from various rhizospheric soils.

Strain (Source)	16S rRNA gene			Phylogenetic affiliation	BFA-related traits			
	Rt	GenBank accession no.	Most closely related sequence (accession number) (Id %)		BFA	Agg (%) (type)	Motility (cm)	Long EPSAHL
C3 (CRS)	1 ^u	KF261554	<i>Agrobacterium</i> sp. AHL7 (AY379979.1) (99)	α-Proteobacteria	2.30 ± 0.28	29.6 ± 5.6 SA	2.55 ± 0.49 ^c	- +
C7 (CRS)	4 [^]	KF261555	<i>Microbacterium</i> sp. S18 (EU747700.1) (99)	Actinobacteria	1.94 ± 0.30	35.4 ± 3.4 MA	0.77 ± 0.21 ^a	- +
C12 (CRS)	3 [*]	KF261556	<i>Rhizobium</i> sp. R-24658 (AM084043.1) (99)	α-Proteobacteria	1.50 ± 0.29	37.2 ± 6.1 MA	1.83 ± 0.22 ^b	- +
C29 (CRS)	7 [#]	KF261557	<i>Arthrobacter</i> sp. DNS10 (HQ914648.1) (99)	Actinobacteria	0.11 ± 0.03	23.8 ± 5.8 SA	-	+ -
C35 (CRS)	7 [#]	KF261558	<i>Promicromonospora</i> sp. FFN01 (JN896618.1) (99)	Actinobacteria	0.06 ± 0.02	67.2 ± 2.0 HA	-	- +
M1 (DRS)	3 [*]	KF261559	<i>Stenotrophomonas</i> sp. CK6 (AJ870967.1) (100)	γ-Proteobacteria	3.40 ± 0.38	41.4 ± 5.8 A	2.88 ± 0.50 ^{cd}	+ -
M10 (DRS)	4 [^]	KF261560	<i>M. hydrocarbonoxydans</i> HNR08 (EU373354.1) (99)	Actinobacteria	2.19 ± 0.37	40.5 ± 7.8 A	0.79 ± 0.19 ^a	- +
M29 (DRS)	7 [#]	KF430812	<i>Arthrobacter</i> sp. DNS10 (HQ914648.1) (99)	Actinobacteria	0.09 ± 0.02	45.3 ± 7.7 A	0.87 ± 0.23 ^a	- +
M32 (DRS)	8 [#]	KF261561	<i>M. testaceum</i> SD9-677 (JQ660317.1) (99)	Actinobacteria	0.06 ± 0.01	24.8 ± 3.5 SA	-	- -
S2 (SRS)	19 ^u	KF261562	<i>Pseudomonas</i> sp. AF32 (EU680973.1) (99)	γ-Proteobacteria	2.34 ± 0.54	37.2 ± 6.0 MA	3.38 ± 0.43 ^d	- +
S13 (SRS)	3 [*]	KF261564	<i>Rhizobium</i> sp. R-24658 (AM084043.1) (99)	α-Proteobacteria	1.02 ± 0.20	43.2 ± 5.7 A	2.95 ± 0.13 ^{cd}	- +
S36 (SRS)	7 [#]	KF261565	<i>Arthrobacter pascens</i> H45 (KC934828.1) (99)	Actinobacteria	0.05 ± 0.02	49.6 ± 8.2 A	-	+ +
S37 (SRS)	25 ^u	KF261566	<i>Shinella granulii</i> Ch06 (AY995149.1) (98)	α-Proteobacteria	0.05 ± 0.03	9.5 ± 1.7 BA	0.95 ± 0.13 ^a	+ -

Rt: Ribotype. Superscript symbols in ribotype column: u: majority unique ribotype; ^: shared ribotype for CRS and DRS strains; * shared ribotype for HBFA strains; # shared ribotype for LBFA strains. Id: Identity. Agg: Autoaggregation expressed in %. Aggregation categories based on statistical analysis: BA, barely aggregative; SA, slightly aggregative; MA, moderately aggregative; A, aggregative; HA, highly aggregative. Motility is expressed in terms of the halo diameter (cm) (see Materials and Methods). Differing letters indicate significant differences. EPS: exopolysaccharide. AHL: acyl homoserine lactone.

doi: 10.1371/journal.pone.0079614.t001

Biotechnology Information [NCBI]; <http://blast.ncbi.nlm.nih.gov/Blast.cgi> [47] to find identities among sequences.

Nucleotide sequence accession numbers

The nucleotide sequences of the 16S rRNA genes of the alfalfa rhizosphere strains C3, C7, C12, C29, C35, M1, M10, M29, M32, S2, S13, S36, and S37 determined in this study have been deposited in the GenBank nucleotide sequence database (NCBI; www.ncbi.nlm.nih.gov/genbank) under accession numbers KF261554, KF261555, KF261556, KF261557, KF261558, KF261559, KF261560, KF430812, KF261561, KF261562, KF261564, KF261565, and KF261566, respectively. The strains and their GenBank accession numbers are listed in Table 1.

Clustering analysis

The genetic distances among the 3 rhizospheric soils (CRS, DRS, SRS) and their subpopulations (HBFA and LBFA) were related to the ribotypes found for each condition, and dendrograms were constructed accordingly. We constructed a 2-dimensional binary matrix using a binary scoring system: 1 for presence or 0 for absence of a given ribotype for a particular condition. The distances among conditions were evaluated using the Jaccard index. Dendrograms were constructed with Infogen software, using the UPGMA algorithm [48].

Study of traits related to BFA

Various physiological processes related to BFA were evaluated for selected strains from each of the 3 alfalfa rhizospheric soils. Autoaggregation assays were performed as described by Sorroche et al. (2010) [49]. Each strain was grown for 24 h at 28 °C in TY medium. Five ml of bacterial suspension was transferred to a glass tube (10 × 70 mm) and left to settle for 24 h at 4 °C. A 0.2-ml aliquot of the upper portion of the suspension was transferred to a microtiter plate, and OD₆₂₀ was measured (OD_{final}). A control tube was vortexed at ~1500 rpm until a homogeneous bacterial suspension was obtained, and OD₆₂₀ was measured (OD_{initial}). The autoaggregation percentage was calculated as 100[1 - (OD_{final}/OD_{initial})].

Motility (swimming assay) of each strain was evaluated by inoculation (center puncture) of a plate containing reduced 1/10 TY medium with 0.3% agar [50] through visualization of homogeneous halos of bacterial motility. The plates were incubated for 3 days at 28 °C and halo diameters (indicators of motility) were measured in cm.

EPS production was assessed qualitatively based on fluorescence under UV exposure of EPS-producing strains grown on LB medium containing 0.02% calcofluor white [51].

The production of quorum-sensing molecules was studied qualitatively using the biosensor *Chromobacterium violaceum* CV026 for detection of acyl homoserine lactones (AHLs) with short acyl chains [52] and the biosensor *Agrobacterium tumefaciens* NTL4 (pZLR4) for detection of AHLs with long acyl chains [53].

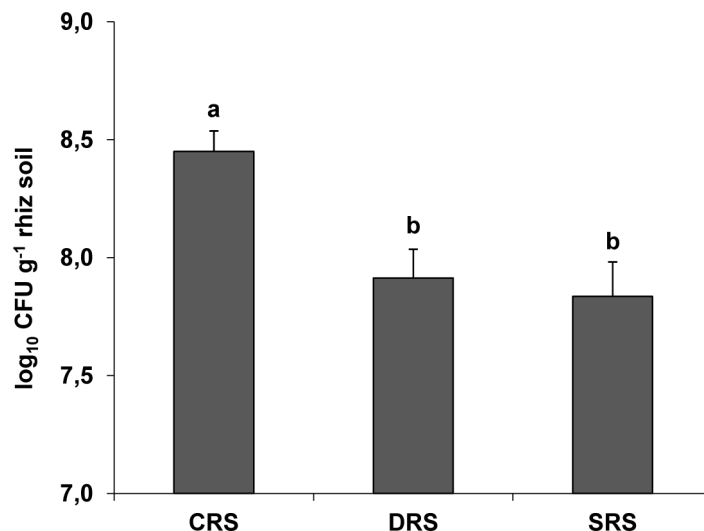


Figure 1. Total cultivable bacterial counts in 3 types of alfalfa rhizospheric soils. Counts of cultivable bacteria in rhizospheric soils exposed to nonstressful condition (CRS) and water-limiting conditions (DRS and SRS) are expressed as log₁₀ CFU per g dry rhizospheric soil. The values and error bars are mean and S.D. of 4 replicates per treatment. Differing letters indicate significant differences ($P < 0.05$) between counts.

doi: 10.1371/journal.pone.0079614.g001

Statistical analysis

The values presented are means of replicate experiments; the number of replicates varied depending on the experiment. The data were subjected to one-way analysis of variance (ANOVA) followed by comparison of multiple treatment levels using *post hoc* Fisher's Least Significant Difference (LSD) test. To evaluate the overall relationships of treatments, subpopulations, ribotypes, phylogenetic affiliations, and BFA-related traits, we performed a multivariate study with principal components analysis (PCA). Statistical analyses were performed using the InfoStat software program, version 2.0 (Grupo InfoStat, Universidad Nacional de Córdoba, Argentina).

Results and Discussion

Determination of cultivable bacteria counts in alfalfa rhizospheric soils

The primary lifestyle of most soil bacteria is as part of a multispecies biofilm. Soil ecosystems provide various microenvironments in which bacteria can become established as biofilms. The rhizosphere is a highly suitable location for development of the biofilm lifestyle because of the presence of root-derived nutrient sources and a biotic surface with which bacteria can actively interact [12,54]. In contrast, bulk soils provide poor or even hostile microniches for bacteria that survive through adhesion to soil particles and a *posteriori* development of a biofilm [55].

Bacterial cell counts greater than 9.0 log₁₀ CFU per g field soil have been reported in previous studies [56]. We obtained mean bacterial counts on NA medium of 7.31 ± 0.23 log₁₀ CFU per g original bulk soil (data not shown), which is reasonable in view of the low organic matter content (1.03%) of the sampled

field soil and the fact that we counted only the cultivable fraction of total bacteria. Our bacterial counts in bulk soil are comparable to those of cultivable bacteria obtained in previous studies on various types of soil exposed to various agricultural practices [57]. Interestingly, the bacterial counts for our 3 rhizospheric soils (CRS, DRS, SRS) (Figure 1) were significantly higher than those for the original bulk soil prior to the experimental treatments. Our findings reflect the previously described "rhizosphere effect" [58]; i.e., in comparison with bulk soil, soil environments closely associated with root systems provide a favorable microniche for microbial growth and activity because of the presence of nutrients derived from root exudates and rhizodeposits [35,59].

Previous studies have shown that 1 g rhizospheric soil contains ~7.0-9.0 log₁₀ CFU cultivable bacteria [9]. Our counts for rhizospheric soils exposed to nonstressful conditions (CRS) or water-limiting conditions (DRS and SRS) ranged from 7.7 to 8.5 log₁₀ CFU per g dry rhizospheric soil (Figure 1). These values are similar to or higher than counts obtained in previous studies of rhizospheric soils from legume and nonlegume plants [57,60,61]. In particular, our counts are consistent with those obtained for cultivable bacteria in rhizospheres of legumes such as *Glycine max*, *Vigna radiata*, *Arachis hypogaea*, and *Acacia mangium* [57,62,63].

We found that exposure to water-limiting conditions resulted in changes of bacterial counts in alfalfa rhizospheric soils. Interestingly, the number of CFU per g rhizospheric soil was lower under stress conditions (DRS, SRS) than nonstress condition (CRS) (Figure 1).

Exposure to water-limiting conditions clearly affected alfalfa plant development (Figure 2), although analysis of stress effects on biomass parameters was not part of our research design. Such effects were more severe for desiccation stress

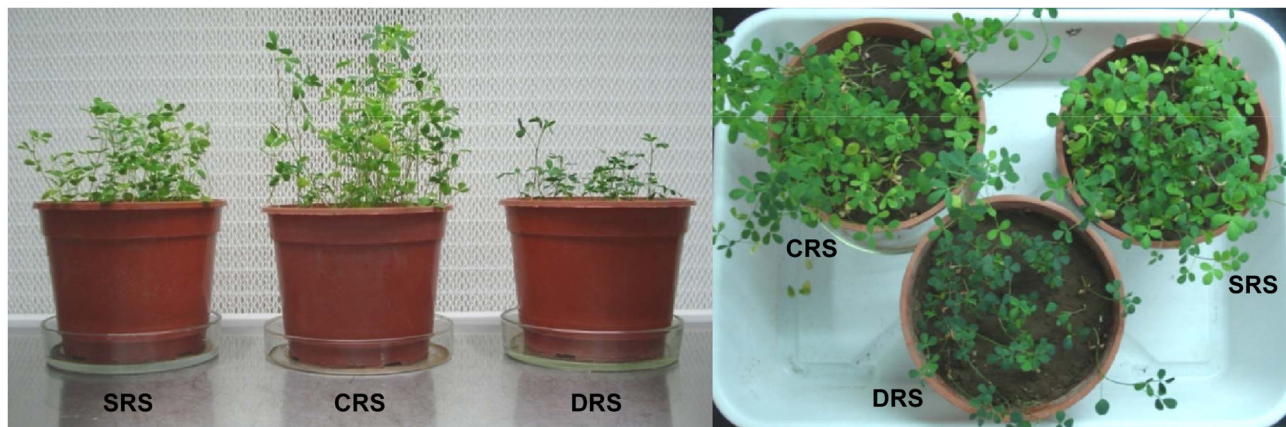


Figure 2. Growth of alfalfa plants exposed to 3 experimental conditions. Aerial development of alfalfa plants at the F2 stage (preflowering) under CRS, DRS, and SRS conditions.

doi: 10.1371/journal.pone.0079614.g002

(DRS) than for saline stress (SRS), most likely because the degree of salinity applied was moderate (soil EC: 2.46 dS/m; slightly saline). Aerial plant development reflects root development, which was considerably lower for DRS than for SRS or CRS. The observed differences in bacterial counts may be related to the differential composition of root exudates under each condition, in view of the role of the exudates in modulating plant-bacteria interaction through alterations of bacterial metabolism, gene expression, and bacterial community structure [62,64]. Nutrient and desiccation stress have been shown to produce significant changes in the quantity and composition of root exudates [65]. Soil drying had a strong impact on total bacterial and pseudomonad counts, which were reduced by water limitation [57]; i.e., desiccation greatly reduced the number of bacterial communities. Previous studies showed higher biomass and microbial activity in environments with higher water content [66,67], in agreement with our findings.

Rhizodeposition of alfalfa plants exposed to saline stress differs from that of nonstressed plants because increased salinity induces changes in plant hormonal balances. Studies on the effects of salinity in *Medicago truncatula* and *Lotus japonicus* indicate that a large proportion of the genome is involved in responses to high salinity and desiccation [68].

Whole Biofilm-Forming Ability (WBFA) of 3 rhizospheric bacterial communities

The rhizospheric niche is a dynamic microenvironment harboring a polymicrobial community affected by its own metabolic processes and by the variable composition of root exudates, which depends on the plant species and their stage of growth [69,70]. We defined rhizospheric bacterial communities as those living as multispecies biofilm microconsortia recovered from (i) bacterial suspensions obtained from soil tightly associated with alfalfa roots, and (ii) bacteria colonizing the root surface. This definition is supported

by previous studies indicating that the majority of strains present in biofilms are cultivable [10].

Many previous studies have assessed the effects of saline stress or desiccation stress on the BFA of particular bacterial strains [6,71,72]. However, effects of water-limiting conditions on BFA have never been evaluated using isolates obtained from an entire bacterial community.

We obtained bacterial communities from rhizospheric soils under 3 experimental treatment (CRS, DRS, SRS), as described in Materials and Methods. Each of these communities consisted of ~95 strains isolated from the count plates of greater dilution, thus representing the most numerous members of each community. The WBFA was evaluated for each community as the mean value of 5 replicates of the BFA for each microplate, containing 95 strains per treatment. Whole growth (Figure 3A), WBFA (Figure 3B), and relative BFA (biofilm/growth ratio) (Figure 3C) were greater for the DRS community than for the CRS or SRS communities.

The WBFA (Figure 3B) and relative BFA (Figure 3C) were almost twice as high for the DRS community as for the CRS or SRS communities. As seen in the microplate images (Figure 3B, bottom), the number of dishes having an intense violet color was twice as high for DRS as for CRS or SRS.

These findings indicate that a decrease in soil water potential at the expense of matric potential (drying) leads to the establishment of a bacterial community in the alfalfa rhizosphere consisting of members having a greater capacity for growth under desiccation stress. This phenomenon may be related to a greater ability to exploit nutrient resources under such stress. Similarly, desiccation stress may lead to the selection of bacterial strains with greater BFA, resulting in increased survival of the strains. Previous studies have shown relationships between such an effect and the role of EPSs in the biofilm matrix; EPSs may reduce the effects of desiccation on both the survival of bacterial communities and plant growth [3,6,73,74]. Bacterial colonies isolated from air-dried soils were similar in aspect [57], consistent with our observation that

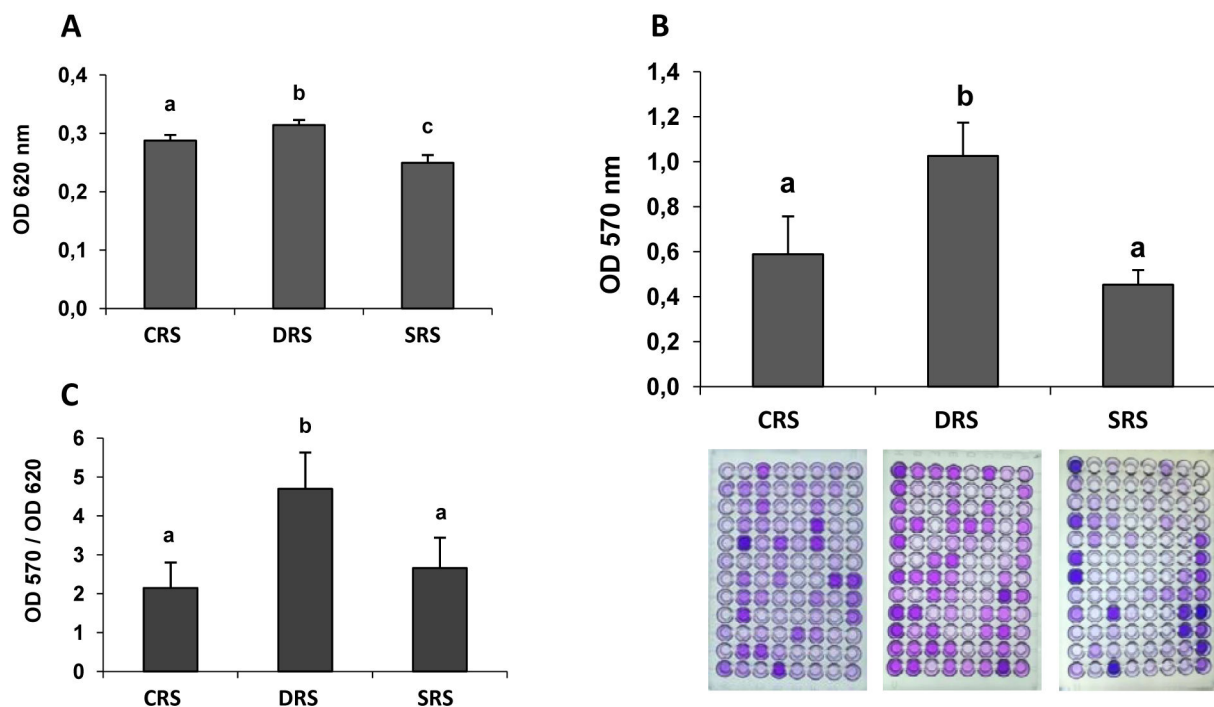


Figure 3. Whole planktonic growth (A), WBFA (B), and relative BFA (C) of bacterial communities from 3 types of alfalfa rhizospheric soil. The values are means of OD_{620} (planktonic growth), OD_{570} (biofilm formation quantified by staining with crystal violet), or their ratio (B/G) obtained for each plate (~95 strains) and averaged from 5 independent replicates for each treatment. The image at the bottom of Panel B shows the actual plates for each treatment. Differing letters indicate significant differences between treatments according to Fisher's LSD test ($P < 0.05$).

doi: 10.1371/journal.pone.0079614.g003

desiccation stress exerts a selective effect on bacterial populations.

It is remarkable that the SRS community showed smaller whole growth and WBFA than the CRS or DRS communities. The reduction of water potential resulting from increased soil solute content evidently operates differently from the effect of desiccation. Either osmotic or matric stress may have a different effect on the composition of root exudates and thus on the bacterial community associated with the roots. For example, the composition of flavonoid exudates from *Phaseolus vulgaris* roots was altered by saline stress [75].

Both soil conditions and the amount and composition of rhizodeposits regulate the specificity of plant-bacteria interactions [76]. In the present study, despite the fact that the original soil and the plant under study were the same, it is possible that the root exudates produced under the 3 experimental conditions were different and the chemotactic effect on soil bacteria selected different communities that were specifically adapted to the particular condition [77]. Exposure to water-limiting conditions can affect bacterial communities indirectly through changes in plant metabolism, plant development, and the composition of rhizodeposits released to the rhizosphere. Previous studies have shown that, in response to water limitation, plants synthesize osmolytes [78] that are released into the rhizospheric soil and act synergistically with osmolytes produced by bacteria [76].

In terms of bacterial physiology, bacteria living under water-limiting conditions (matric or solute stress) must integrate their responses to create a hydrated microenvironment to protect themselves. The association of bacterial populations as a multispecies biofilm in the rhizospheric microenvironment represents a lifestyle strategy for increasing survival under stress conditions. Desiccation stress may lead to selection of strains with higher BFA that have a survival advantage because of their ability to colonize root surfaces, whereas other mechanisms not necessarily related to BFA may play important roles in bacterial survival under saline stress conditions [19,25,76]. Osmotically stressed cells undergo structural changes of key macromolecules required for establishment and development of mature biofilms, including EPSs [79-81] and lipopolysaccharides [82-84].

Composition and diversity of the 3 rhizospheric bacterial communities

We studied the composition of the bacterial communities associated with each of the 3 rhizospheric soils in order to elucidate (i) the structure, diversity, and identities of the predominant bacteria in biofilms established as multispecies microconsortia in the alfalfa rhizosphere, and (ii) the effects of exposure to stress conditions on such communities. To simplify the analysis, we divided the isolates from each treatment into 2

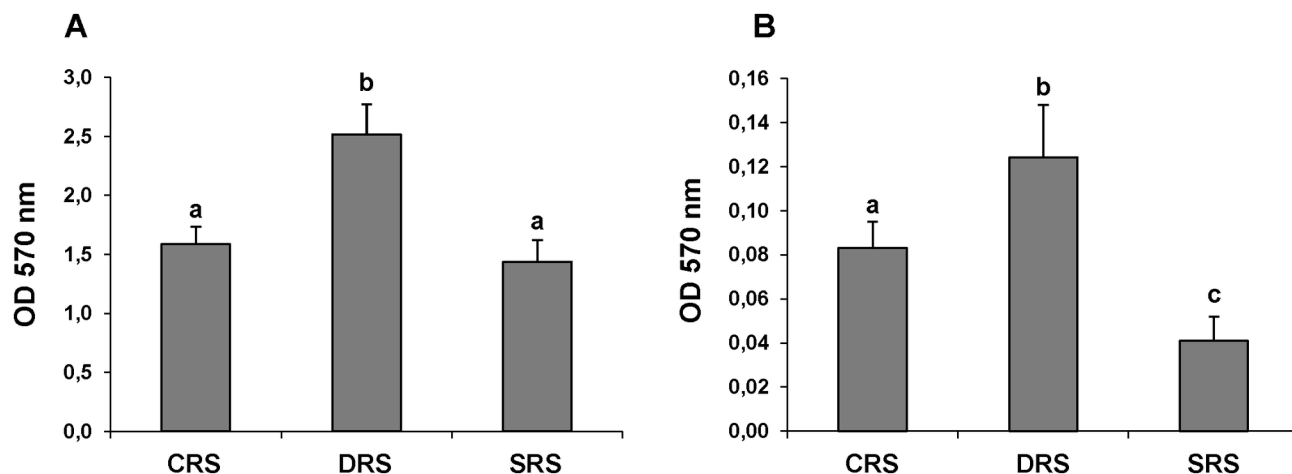


Figure 4. BFA of bacterial subpopulations (HBFA and LBFA) isolated from 3 types of alfalfa rhizospheric soil. BFA of 15 strains grouped as HBFA (A) and LBFA (B) subpopulations of CRS, DRS, and SRS communities as explained in the text. The bars indicate the mean value of OD₅₇₀ (biofilm formation quantified by staining with crystal violet) from 5 independent replicates for each treatment. Differing letters indicate significant differences between treatments according to Fisher's LSD test ($P < 0.05$).

doi: 10.1371/journal.pone.0079614.g004

groups of 15 strains with the highest or the lowest BFA (HBFA and LBFA subpopulations, respectively).

Mean BFA values for each subpopulation were compared with those of the other subpopulations and simultaneously with the WBFA value for the whole community (Figure 3). The values for the HBFA and LBFA subpopulations of the DRS community were higher than those of the CRS or SRS communities (Figure 4), indicating again that desiccation stress results in selection of strains with increased BFA.

Regardless of the treatment, BFA values were smaller for the LBFA subpopulations (Figure 4B) and involved an important group of strains in the multispecies biofilm community. Multispecies biofilms formed in the rhizosphere of plants (in this case alfalfa) involve members of HBFA subpopulations (Figure 4A) and allow other bacterial strains without BFA to take advantage of the biofilm conglomerate and settle in a protected microenvironment. Synergistic interactions such as co-metabolism [10], cell aggregation [85], and the transfer of key determinants via conjugative plasmids [86], appear to play key roles during the development of multispecies biofilms [87,88], although most studies to date have focused on simplistic two-species associations.

The coexistence of LBFA and HBFA strains within a community may alternatively be explained by a cooperative mechanism whereby particular bacterial strains that lack BFA in isolation gain some BFA in the presence of other strains (even low-BFA strains). This scenario could lead to the establishment of mixed biofilms that allow coexistence of strains, avoid competition [89,90], and promote synergism [91] and gene transfer [92]. In view of the complexity of edaphic microenvironments, we speculate that a combination of the two above mechanisms ("rescue" of LBFA strains by HBFA strains and cooperation among low-BFA strains) is crucial for the

establishment of polymicrobial communities in plant rhizospheres.

To study the composition of microbial communities, we used a cultivation-dependent technique based on comparison of fingerprinting by ARDRA with restriction enzyme *Hae*III. The rRNA genes are essential, and their sequences are highly conserved in bacteria. The rRNA genes also have nonconserved sequences that vary among species and families [93]. ARDRA is a common tool for studying bacterial community composition and diversity [94-96]. Although it is not suitable for analysis of overall bacterial diversity from an environmental source through a single fingerprinting technique [97,98], it is useful for the study and comparison of ribotypes in large numbers of samples from differing conditions (e.g., stress conditions as in the present study). Thus, ARDRA is a good tool for ecological studies. Several previous studies have been based on the use of a single restriction enzyme with amplified rRNA genes [61,63,99,100].

We performed a PCR-RFLP study of the most abundant strains of the HBFA and LBFA subpopulations for each treatment (CRS, DRS, SRS). We decided to conduct this laborious method (as opposed to other possible methods; e.g., 16S rRNA gene library) because it allowed us to obtain bacterial strains for further characterization of their biofilm properties and studies of mixed biofilm mechanisms, coexistence processes (synergism, rescue, cooperation), and bacterial traits beneficial to the host plant under stress conditions.

We selected the restriction endonuclease *Hae*III because of its poor discrimination among typical rhizobacteria strains (rhizobia) [45,101], which makes it useful for distinctions at the family level, in view of the potential complexity of bacterial communities isolated from rhizospheric soils.

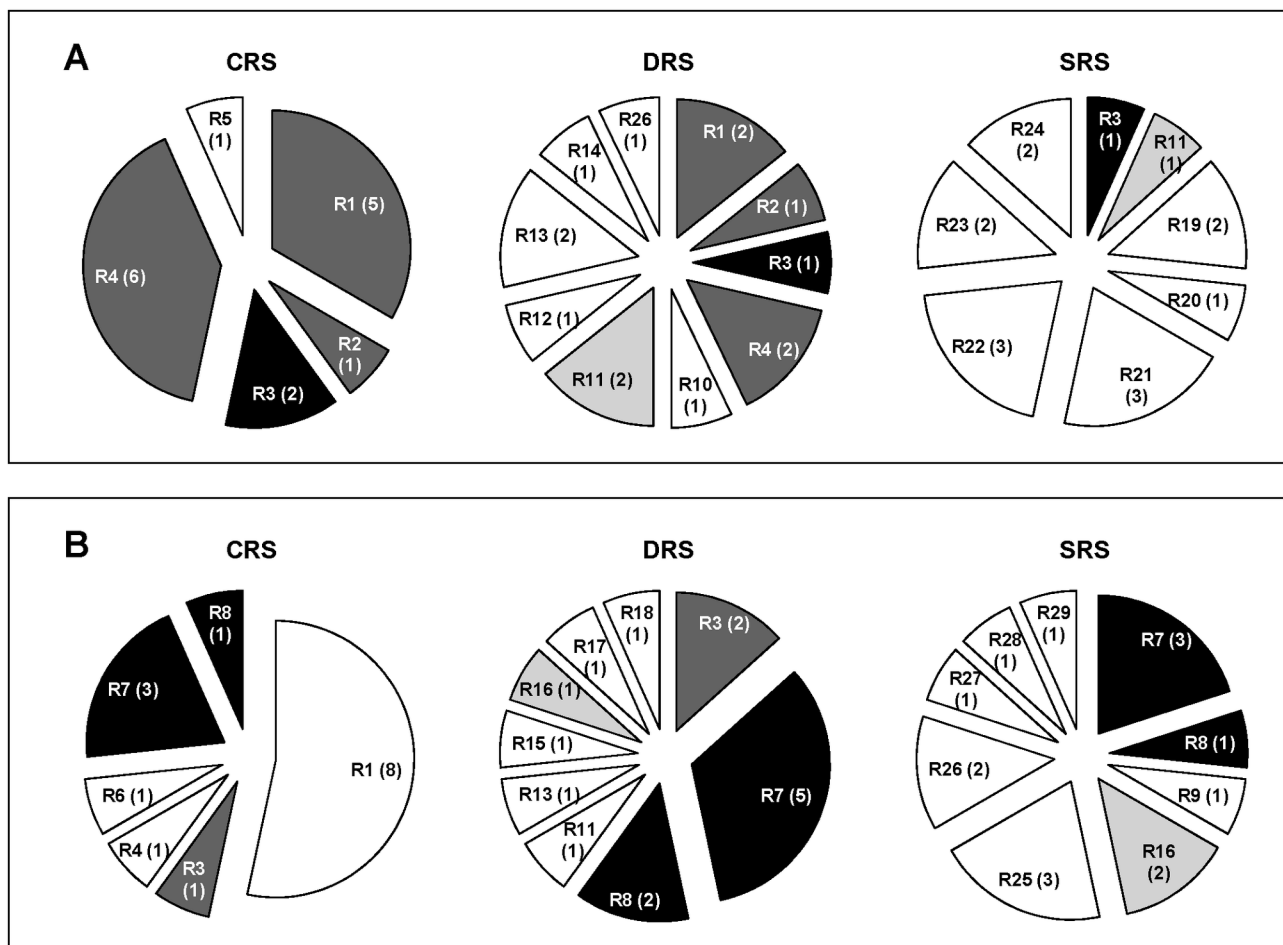


Figure 5. Distribution of ribotypes for HBFA (A) and LBFA (B) strains isolated from 3 types of alfalfa rhizospheric soil. Each "slice" corresponds to a particular restriction profile obtained by digestion of amplified *16S rRNA* gene (ribotype; R) with restriction endonuclease *HaeIII*. The number in parentheses is the number of strains that shared the ribotype for the particular treatment. Unique ribotypes are indicated by white. Shared ribotypes are indicated by light gray, dark gray, or black.

doi: 10.1371/journal.pone.0079614.g005

The ribotypic variability of HBFA and LBFA subpopulations present in each type of rhizospheric soil was investigated following digestion of purified PCR products of *16S rRNA* genes by *HaeIII*. Three to 6 fragments ranging in size from 80 to 750 bp were generated among the 35 ribotypes obtained from the 90 strains evaluated, indicating a ratio of ~2.5 between the number of strains analyzed and the number of ribotypes obtained. Regardless of the experimental treatment, the bacterial strains that colonized the alfalfa rhizosphere were highly diverse, similarly to results in studies of tobacco [61].

In regard to the relationships between bacterial community structure, exposure to water-limiting conditions, and BFA of the strains, we observed clear differences among the ribotypic compositions of the cultivable bacterial communities in the 3 rhizospheric soils (CRS, DRS, SRS) (Figure 5). In general, both the HBFA and LBFA subpopulations from the rhizospheric soils subjected to stress conditions (DRS, SRS) had more restriction profiles (ribotypes) than those from nonstressed soil

(CRS), suggesting the occurrence of diversification processes under stress conditions. Of the 15 HBFA strains in each treatment, we detected 5 ribotypes for CRS, 10 ribotypes for DRS, and 8 ribotypes for SRS (Figure 5A). Of the 15 LBFA strains in each treatment, we found 6 ribotypes for CRS, 9 ribotypes for DRS, and 9 ribotypes for SRS (Figure 5B). These findings appear to be inconsistent with those from a study of bacterial communities associated with the rhizosphere of canola (*Brassica napus*), in which a correlation was found between bacterial diversity and monthly rainfall [102]. However, comparisons between these studies are problematic because of differences in experimental design, soil type, and plant species.

ARDRA revealed the presence of groups that are likely to compete with each other for establishment in the alfalfa rhizosphere because they are present under all 3 experimental conditions (R3 for HBFA, Figure 5A; R7 and R8 for LBFA, Figure 5B). We may speculate that under stressful conditions,

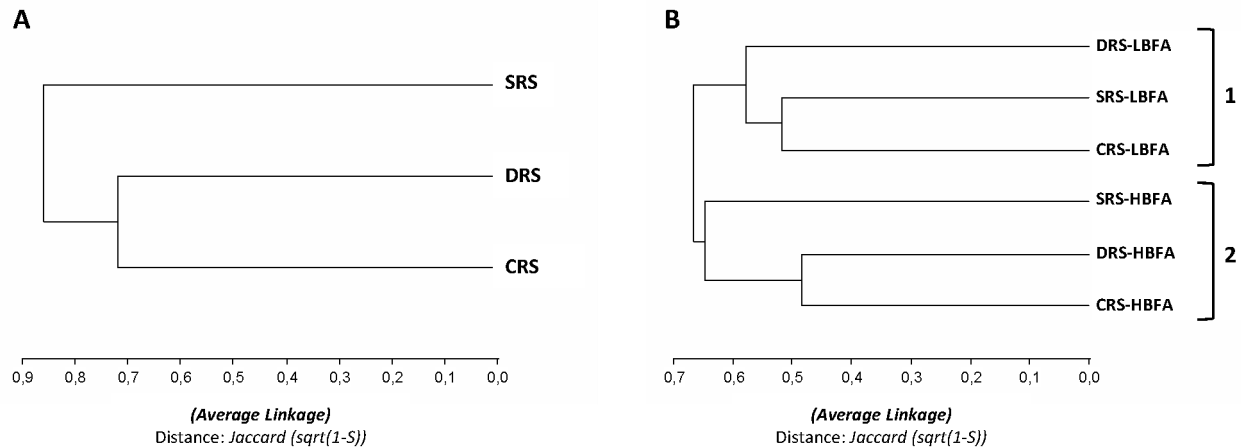


Figure 6. Dendrograms based on RFLP of 16S rRNA gene analysis using the UPGMA algorithm. A: Dendrogram generated for the 3 types of alfalfa rhizospheric soil according to the ribotypes of the strains isolated. B: Dendrogram generated for the 3 types of soil in combination with the BFA (LBFA vs. HBFA) of the bacterial subpopulations, according to the ribotypes of the strains isolated.

doi: 10.1371/journal.pone.0079614.g006

a bacterial mixed biofilm formed by a more diverse community establishes itself in areas close to alfalfa roots as a consequence of the search for less hostile microenvironments. In contrast, under nonstressful conditions, the mixed biofilm community may be less diverse because the rhizosphere is colonized through establishment of more effective (i.e., competitive) bacterial species, reducing the probability that other species will settle in that microniche. An alternative explanation is that some bacterial species are able to survive under nonstressful conditions outside the rhizospheric microenvironment.

Many previous studies have made comparisons of soil bacterial communities in relation to agricultural practices [57,103], soil types [104,105], soil history [106], and crop or plant species [107,108]. The present study is the first to describe the application of an abiotic stress type (water limitation) to a particular soil and the consequent structural changes of bacterial communities associated with the rhizosphere of a single plant species (*M. sativa*).

Interestingly, the numbers of unique restriction profiles were larger for the stressful treatments (DRS, SRS; Figure 5). Within each treatment, most of ribotypes obtained for the HBFA subpopulation were different from those of the LBFA subpopulation. Three of 8 ribotypes (R1, R3, R4) were found in both subpopulations of the CRS group, whereas 3 of 15 ribotypes (R3, R11, R13) were found in both subpopulations of the DRS treatment. There were no shared ribotypes between the two subpopulations of the SRS treatment. These findings reinforce the concept that stressful conditions promote increased diversity of the members of the rhizospheric community.

To further evaluate the differentiation among the 3 treatments and the subpopulations, we constructed a dendrogram with clustering according to the ribotypes found (Figure 6). When all ribotypes found for each condition were

considered, the treatments clustered at a high distance (greater than 70%) (Figure 6A), indicating that the composition of bacterial rhizospheric communities varies depending on the exposure of soils to nonstressful conditions (CRS) or to water limitation via desiccation (DRS) or high salinity (SRS). Interestingly, the UPGMA dendrogram based on the ARDRA showed separation at a high distance of the LBFA and HBFA subpopulations into 2 clusters (groups 1 and 2, respectively; Figure 6B), reflecting the difference of the bacterial groups that constitute the 2 subpopulations. These findings suggest a link between physiological characteristics (BFA) and genetic characteristics.

Identities and phylogenetic affiliations of bacterial strains from the 3 types of alfalfa rhizospheric soil

Representative bacterial strains were identified by complete nucleotide sequencing of the 16S rRNA gene. Strains were selected as belonging to majority or shared ribotypes according to their ARDRA profiles. The 16S rRNA genes amplified with specific primers were of uniform size (~1400 bp). GenBank accession numbers and identities of the strains studied are shown in Table 1. The ARDRA ribotypes selected reflect the identity of the isolated strains with common Gram-positive and Gram-negative bacteria that are typically found in soils (Table 1) and interact with plants. These findings are consistent with those of previous studies [61,109,110].

Interestingly, most of the strains from the HBFA subpopulations were identified as α -Proteobacteria or γ -Proteobacteria, whereas those from the LBFA subpopulations were identified as Actinobacteria. In contrast, some previous studies found that the dominant species in soil biofilms were Gram-negative [10,55,111]. However, these previous studies focused on the early formation of biofilms. We identified Proteobacteria as members of the HBFA subpopulations, which would most likely be the first to establish a biofilm. In

regard to the rhizospheric microenvironment and in agreement with previous studies, we observed in the alfalfa rhizosphere the presence of bacterial groups (α - and γ -Proteobacteria, Actinobacteria) that are able to respond to root rhizodeposition, including rhizobia [69], *Pseudomonas* [38], and various Actinobacteria [112]. Our results are in contrast to those from studies of rhizospheric soils of nonlegume plants, in which β -Proteobacteria, Acidobacteria, and bacilli were the dominant groups [113]. These associations presumably depend on several factors, including plant type, that determine the composition of the microbial community that becomes established on the plant roots.

The analysis of shared ribotypes demonstrated that certain members of both the HBFA and LBFA subpopulations are capable of colonizing the rhizospheric microenvironment of alfalfa regardless of stress condition. Ribotype 3 was present in the HBFA subpopulations for all 3 conditions and was associated primarily with α -Proteobacteria (strains C12 and S13, family Rhizobiaceae) and γ -Proteobacteria (strain M1, family Xanthomonadaceae). Ribotype 7 included members of the LBFA subpopulations belonging to the Actinobacteria, particularly genus *Arthrobacter*. These findings suggest that the presence of shared ribotypes with similar identities among the 3 treatments was ascribable to bacterial strains capable of establishing a mixed biofilm in the alfalfa rhizosphere, based on the ability to colonize the root environment (in the case of HBFA strains) or the opportunistic ability to become associated with mixed microconsortia (in the case of LBFA strains). Gram-negative bacteria may be primarily responsible for niche colonization and biofilm formation, whereas Actinobacteria simply take advantage of the biofilm structure to live in a protected microenvironment.

In regard to the affiliations of unique majority ribotypes, we found identity of C3 (R1) with the genera *Agrobacterium* and *Rhizobium*, S2 (R19) with *Pseudomonas*, and S37 (R25) with *Shinella*. The identity of rhizospheric strains with members of the Rhizobiaceae, e.g., *Rhizobium* and *Shinella* [114], is interesting in view of the ability of these bacteria to establish symbiotic interactions with legumes. The nodulation ability of C3, C12, S13, and S37 was evaluated through inoculation of these strains on surface-sterilized seeds of *M. sativa* by the method described in our previous study [115]. Results of the nodulation tests were negative for all plants inoculated with the above strains, whereas positive results were obtained for plants inoculated with *E. meliloti* strain Rm 1021 (positive control) (data not shown). Regardless of these findings, it is remarkable that strains phylogenetically related to the rhizobia were present as part of mixed biofilms in the bacterial community associated with the alfalfa rhizosphere. These strains were found in the CRS and SRS groups, suggesting a tolerance to water-limiting conditions resulting from salinity but not from desiccation.

We examined the identity of strains with the R4 ribotype (C7, M10) that is a majority ribotype shared by the HBFA subpopulations of CRS and DRS. These strains were identified as members of the genus *Microbacterium*, indicating that some Actinobacteria have good BFA.

Comparison of our findings for strain identity (Table 1) and ribotype composition (Figure 5) suggests that under nonstressful conditions (CRS) the bacterial community is less diverse and consists primarily of members of the Rhizobiaceae (R1) and Actinobacteria (R4, R7). Under water-limiting conditions (DRS, SRS), the communities are more diverse and consist primarily of unique ribotypes. Although shared members with similar phylogenetic affiliations (R3, R7, R8) are present, they are not the majority ribotypes in these communities.

The presence of members of the Actinobacteria (particularly Actinomycetes) in biofilm microconsortia established in the alfalfa rhizosphere is interesting for several reasons: (i) the formation of mixed biofilms including Gram-positive (Actinobacteria) and Gram-negative (Proteobacteria) bacteria provides an interesting research model of biofilm development by bacteria of different phyla; (ii) the potential role of Actinomycetes as plant growth-promoting rhizobacteria (PGPR) [9,116,117] is poorly known in comparison to other PGPR, such as *Pseudomonas* and rhizobia; (iii) our knowledge of community structure and diversity of Actinobacteria in alfalfa rhizospheric soils is limited; (iv) Actinobacteria may play important ecological roles in the rhizosphere microenvironment.

Because of the small number of strains sequenced, our results and interpretations as presented in this article represent only a restricted and partial view of a very complex and dynamic microenvironment. However, this study is the first to assess alfalfa rhizospheric communities as mixed biofilms in the context of water-limiting conditions, and our findings provide an important basis for more extensive studies in the future.

BFA-related traits of bacterial strains from 3 types of alfalfa rhizospheric soils

Biofilm formation is a multistep process that requires the integration of various bacterial physiological processes, including quorum sensing [118,119], motility [120,121], autoaggregation [34], and EPS production [73,122].

We evaluated the BFA-related traits of the selected cultivable bacterial strains in relation to ribotype (Table 1). In general, the ability of the strains to produce BFA-related phenotypes was variable. The autoaggregative phenotype of the strains ranged from barely to highly aggregative types, with no apparent relationship to strain origin or phylogenetic affiliation. There was also no obvious correlation between ribotype and EPS production. However, it should be noted that the nonspecific calcofluor fluorescence staining test used detects only the presence of β linkages among sugars, and the "negative" strains may have had EPS-producing ability that was not detected by calcofluor staining.

Our evaluation of QS signal production showed that all of the tested strains were incapable of synthesizing short-chain AHLs (data not shown). Nine of the 13 isolates were able to produce long-chain AHLs according to our methodology, and no direct relationship was found between BFA and AHL production. Three of the 4 AHL-negative strains belonged to the LBFA groups and the other (M1) belonged to an HBFA group and was positive for the remaining BFA-related traits. These

findings suggest that "cross-talk" information exchange may occur in the rhizospheric microenvironment, reflecting the complexity of interactions at the biofilm microconsortium level. As suggested previously [123], QS signals synthesized by certain members of taxonomically and functionally complex multispecies biofilms may coordinate the behavior of the entire community (microconsortium), with an overall beneficial effect. Our evaluation of QS signal production was limited to the detection of AHL-like molecules. This type of signal, which is typically produced by Gram-negative bacteria, was surprisingly detected in strains identified as Actinobacteria. This finding is of interest because QS mechanisms found to date in Gram-positive bacteria involve the production of small peptides. We did not test for the possible production of the autoinducer 2 (AI-2) signal, which has been reported to occur in both Gram-negative and Gram-positive bacteria [124].

Our motility (swimming) assays indicated the presence of 3 groups: (i) non-motile strains, which were associated with LBFA groups identified as Actinobacteria, (ii) low-motility strains, regardless of phylogenetic affiliation or BFA, and (iii) high-motility strains, which were associated with HBFA strains identified as Proteobacteria (Table 1).

To further integrate and provide explanations for the relationships among BFA-related traits, ribotypes, phylogenetic affiliations, and experimental treatments, we performed a multivariate PCA. This analysis provides a graph that facilitates visualization and interpretation of the data set and the variables. For the PCA, the observations (cases) were the ribotypes (R) and phylogenetic affiliations (Actinobacteria, Proteobacteria) associated with different treatments (CRS, DRS, SRS) and subpopulations (HBFA, LBFA); the variables were the BFA, autoaggregation, motility, AHL production, and EPS production of each strain belonging to a given observation.

The PCA applied to all data in 3 dimensions (PC1, PC2, PC3) explained ~86% of the total variability in the study. The graph generated from PC1 and PC2 (which explained ~70% of the variability) (Figure 7) indicates that no association could be made in relation to treatment. Thus, the selection of traits related to BFA-associated phenotypes was not affected by water-limiting conditions, which was obvious because HBFA and LBFA subpopulations were identified for all 3 treatments. There was a clear separation of observations into 2 groups as a function of phylogenetic affiliation and HBFA vs. LBFA status: (i) Actinobacteria with LBFA status (ribotypes R7 and R8, found for all 3 treatments), and (ii) Actinobacteria with HBFA status (ribotype R4, found for CRS and DRS) and most of the Proteobacteria. Group (i) was in contrast to the phenotypes with BFA-related traits and had some proximity to the autoaggregative phenotype. Such autoaggregative capability may allow these strains to join an existing biofilm and take advantage of the traits of the other members. Group (ii) includes a subgroup of strains belonging to the α -Proteobacteria (R3) and Actinobacteria (R4) that display similar behaviors in regard to BFA. The positioning of unique ribotypes such as R1 and R19 next to this subgroup is interesting. These associations of strains with differing phylogenetic affiliations reflect the complexity of interactions possible in multispecies

biofilms established as a community in the alfalfa rhizosphere. The positioning of γ -Proteobacteria ribotype R3 (identified as strain M1), which was not closely associated with members of group (ii), is interesting because this strain does not belong to the α -Proteobacteria and has strong BFA-related traits. Another unique ribotype, R25 (strain S37), is characterized by being the most distant in relation to both other groups and BFA-related traits (Table 1; Figure 7).

In regard to the associations among the variables, we found a strong positive correlation (acute angles in Figure 7) between the variables of motility and biofilm formation. This finding is consistent with previous evidence that the initial step of colonization and the subsequent developmental steps of biofilm formation depend on differing bacterial motility mechanisms [125]. Biofilm formation showed weaker correlations (more open angles in Figure 7) with AHL production and autoaggregation. One possible interpretation of this finding is that bacteria, prior to physical contact for cell aggregation, must communicate, move, and then interact among themselves and with nearby surfaces.

Surprisingly, no associations (i.e., right or obtuse angles in Figure 7) were found among EPS production, biofilm formation, AHL production, and autoaggregation, suggesting that these bacterial mechanisms may be regulated and used differently as determined by environmental or plant signals. It is also possible that other EPSs and/or QS signals not evaluated in this study play important roles in the complex process of a multispecies community development.

Improved knowledge of traits in bacterial strains that confer increased survival and plant protection against environmental stressors will certainly be useful for management of agricultural practices. Morphological, physiological, and molecular approaches for elucidation of bacterial mechanisms that enhance tolerance of stress conditions will help us obtain this knowledge.

Conclusions

The findings presented here demonstrate that the rhizospheres of *Medicago sativa* (alfalfa) plants exposed to differing water-limiting conditions harbor distinct bacterial communities (microconsortia) with differing abilities to develop biofilms and thus to establish themselves in this microenvironment. Judging by observed changes in colony sizes (counts), WBFA, and community structures, the ecological functions of rhizospheric biofilm microconsortia vary depending on exposure to stressful conditions, presumably to enhance bacterial community survival, plant growth, and protection from the stress conditions. We found that rhizospheric soils exposed to desiccation conditions (DRS) contained bacterial communities with higher WBFA in comparison to those exposed to saline stress (SRS) or no water limitation (CRS). Our results indicate that water-limitation stress led to selection of bacterial strains in the alfalfa rhizospheric niche that employed the protected biofilm microenvironment as a strategy to survive in the dry soil.

Ribotyping analysis based on ARDRA showed that bacterial communities present in the 3 types of soils (CRS, DRS, SRS)

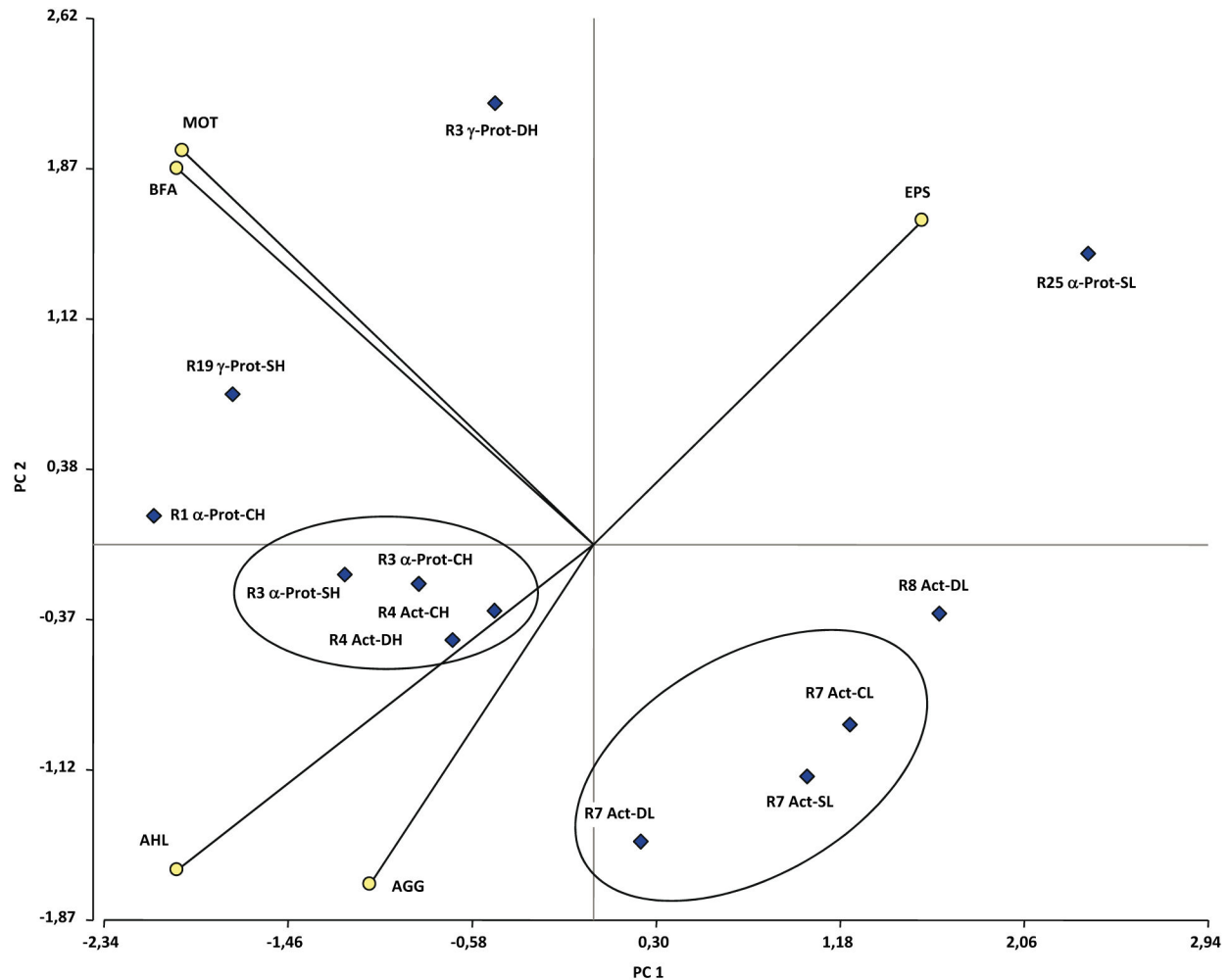


Figure 7. Relationships among BFA-related traits, ribotypes, phylogenetic affiliations, and experimental treatments. The graph was obtained from PCA using the InfoStat software program, version 2.0. Diamonds indicate combinations of ribotypes and affiliations with treatments. R: ribotype. Act: Actinobacteria. Prot: Proteobacteria. C: CRS. D: DRS. S: SRS. H: HBFA. L: LBFA. Circles indicate biological variables: BFA, biofilm-forming ability; MOT, motility; AGG, autoaggregation; AHL, production of QS signal; EPS, EPS production. The angles formed between the straight lines indicate the degree of correlation between variables (see text). PC1: Principal Component 1. PC2: Principal Component 2.

doi: 10.1371/journal.pone.0079614.g007

were strongly differentiated. Such heterogeneity was present between the HBFA vs. LBFA subpopulations in a given type of soil, accentuating the separation of the communities.

The phylogenetic affiliation analysis of the selected strains showed that Actinobacteria and Proteobacteria are the predominant members of alfalfa rhizospheric microconsortia. Certain bacterial ribotypes were present in the alfalfa rhizosphere regardless of exposure to stressful conditions. On the other hand, exposure to the 2 water-limiting conditions (DRS, SRS) resulted in the appearance or disappearance of other ribotypes, suggesting that such stress is a key factor that modulates the physiology of the host plant, bacterial species, and rhizospheric community. The composition of alfalfa rhizospheric microconsortia appears to be strongly affected by

interaction phenomena such as synergism, antagonism, cooperation, and opportunism, as evidenced by the presence in this edaphic niche of bacterial strains with differing BFA.

In summary, the present findings improve our understanding of the structure and physiology of bacterial communities established as biofilm microconsortia in the rhizosphere of alfalfa, an important forage legume worldwide, exposed to differing water-limiting environments. These data provide a basis for further studies of the members of these communities at many levels (ranging from molecular to ecological) that will lead to effective new tools for improved management of agricultural practices and increased understanding of these crucial microorganisms.

Acknowledgements

We thank Dr. S. Anderson for English editing of the manuscript and express our appreciation to Mr. J.V. Bogino for allowing our experiments to be conducted on his field in Bulnes.

References

- Costerton JW, Lewandowski Z, Caldwell DE, Korber DR, Lappin-Scott HM (1995) Microbial biofilms. *Annu Rev Microbiol* 49: 711-745. doi: 10.1146/annurev.mi.49.100195.003431. PubMed: 8561477.
- Potera C (1996) Biofilms invade microbiology. *Science* 273: 1795-1797. doi:10.1126/science.273.5283.1795. PubMed: 8815541.
- Flemming HC, Wingender J (2010) The biofilm matrix. *Nat Rev Microbiol* 8: 623-633. PubMed: 20676145.
- Roberson EB, Firestone MK (1992) Relationship between desiccation and exopolysaccharide production in a soil *Pseudomonas* sp. *Appl Environ Microbiol* 58: 1284-1291. PubMed: 16348695.
- Jackson CR (2003) Changes in community properties during microbial succession. *Oikos* 101: 444-448. doi:10.1034/j.1600-0706.2003.12254.x.
- Chang WS, van de Mortel M, Nielsen L, Nino de Guzman G, Li X et al. (2007) Alginate production by *Pseudomonas putida* creates a hydrated microenvironment and contributes to biofilm architecture and stress tolerance under water-limiting conditions. *J Bacteriol* 189: 8290-8299. doi:10.1128/JB.00727-07. PubMed: 17601783.
- Burmølle M, Hansen LH, Sørensen SJ (2006) Reporter gene technology in soil ecology: detection of bioavailability and microbial interactions. In: P Nannipieri K Smalla. *Nucleic Acids and Proteins in Soil*. pp. 397-419.
- Hinsinger P, Bengough AG, Vetterlein D, Young IM (2009) Rhizosphere: biophysics, biogeochemistry and ecological relevance. *Plant Soil* 321: 117-152. doi:10.1007/s11104-008-9885-9.
- Compant S, Clément C, Sessitsch A (2010) Plant growth-promoting bacteria in the rhizo- and endosphere of plants: Their role, colonization, mechanisms involved and prospects for utilization. *Soil Biol Biochem* 42: 669-678. doi:10.1016/j.soilbio.2009.11.024.
- Burmølle M, Hansen LH, Sørensen J (2007) Establishment and early succession of a multispecies biofilm composed of soil bacteria. *Microb Ecol* 54: 352-362. doi:10.1007/s00248-007-9222-5. PubMed: 17593424.
- Fujishige NA, Kapadia NN, Hirsch AM (2006) A feeling for the micro-organism: structure on a small scale. *Biofilms on plant roots*. *Bot J Linn Soc* 150: 79-88. doi:10.1111/j.1095-8339.2006.00492.x.
- Pearce D, Bazin MJ, Lynch JM (1995) The rhizosphere as a biofilm. In: HM Lappin-Scott JW Costerton. *Microbial Biofilms*: 207-220.
- Raaijmakers J, Paulitz TC, Steinberg C, Alabouvette C, Moënne-Loccoz Y (2009) The rhizosphere: a playground and battlefield for soil borne pathogens and beneficial microorganisms. *Plant Soil* 321: 341-361. doi:10.1007/s11104-008-9568-6.
- Lugtenberg B, Kamilova F (2009) Plant-growth-promoting rhizobacteria. *Annu Rev Microbiol* 63: 541-556. doi:10.1146/annurev.micro.62.081307.162918. PubMed: 19575558.
- Welbaum G, Sturz AV, Dong Z, Nowak J (2004) Fertilizing soil microorganisms to improve productivity of agroecosystems. *Cr Rev Plant Sci* 23: 175-193
- Buée M, De Boer W, Martin F, van Overbeek L, Jurkevitch E (2009) The rhizosphere zoo: an overview of plant-associated communities of microorganisms, including phages, bacteria, archaea, and fungi, and of some of their structuring factors. *Plant Soil* 321: 189-212. doi:10.1007/s11104-009-9991-3.
- Potts M (1994) Desiccation tolerance of prokaryotes. *Microbiol Rev* 58: 755-805. PubMed: 7854254.
- Papendick RI, Campbell GS (1980) Theory and measurement of water potential. In JF Parr WR Gardner LF Elliott. *Water potential relations in soil microbiology*. pp. 1-22.
- Zahran HH (1999) *Rhizobium-legume* symbiosis and nitrogen fixation under severe conditions and in an arid climate. *Microbiol. Mol Biol: R* 63: 968-989
- Fierer N, Schimel JP, Holden PA (2003) Influence of drying rewetting frequency on soil bacterial community structure. *Microb Ecol* 45: 63-71. doi:10.1007/s00248-002-1007-2. PubMed: 12469245.
- Griffiths RI, Whiteley AS, O'Donnell AG, Bailey MJ (2003) Physiological and community responses of established grassland bacterial

Author Contributions

Conceived and designed the experiments: PB WG. Performed the experiments: PB AA FN. Analyzed the data: PB AA FN WG. Contributed reagents/materials/analysis tools: PB AA FN WG. Wrote the manuscript: PB WG.

- populations to water stress. *Appl Environ Microbiol* 69: 6961-6968. doi: 10.1128/AEM.69.12.6961-6968.2003. PubMed: 14660337.
- Deaker R, Roughley RJ, Kennedy IR (2004) Legume seed inoculation technology—a review. *Soil Biol Biochem* 36: 1275-1288. doi:10.1016/j.soilbio.2004.04.009.
- Catroux G, Hartmann A, Revellin C (2001) Trends in rhizobial inoculant production and use. *Plant Soil* 230: 21-30. doi:10.1023/A:1004777115628.
- Bogino P, Nievas F, Banchio E, Giordano W (2011) Increased competitiveness and efficiency of biological nitrogen fixation in peanut via in-furrow inoculation of rhizobia. *Eur J Soil Biol* 47: 188-193. doi: 10.1016/j.ejsobi.2011.01.005.
- Vriezen JAC, de Bruijn FJ, Nüsslein K (2007) Responses of rhizobia to desiccation in relation to osmotic stress, oxygen and temperature. *Appl Environ Microbiol* 73: 3451-3459. doi:10.1128/AEM.02991-06. PubMed: 17400779.
- Martínez-Bueno MA, Tobes R, Rey M, Ramos JL (2002) Detection of multiple extracytoplasmic function (ECF) sigma factors in the genome of *Pseudomonas putida* KT2440 and their counterparts in *Pseudomonas aeruginosa* PA01. *Environ Microbiol* 4: 842-855. doi: 10.1046/j.1462-2920.2002.00371.x. PubMed: 12534467.
- Sessitsch A, Howienson JG, Perret X, Antoun HY, Martínez-Romero E (2002) Advances in *Rhizobium* research. *Crit Rev Plant Sci* 21: 323-378. doi:10.1080/0735-260291044278.
- Jones KM, Kobayashi H, Davies BW, Taga ME, Walker GC (2007) How rhizobial symbionts invade plants: the *Sinorhizobium-Medicago* model. *Nat Rev Microbiol* 5: 619-633. doi:10.1038/nrmicro1705. PubMed: 17632573.
- Downie JA (2010) The roles of extracellular proteins, polysaccharides and signals in the interactions of rhizobia with legume roots. *FEMS Microbiol Rev* 34: 150-170. doi:10.1111/j.1574-6976.2009.00205.x. PubMed: 20070373.
- Bradshaw AD, Chadwick MJ (1980) *The restoration of land: the ecology and reclamation of derelict and degraded land*. Berkeley. University of California Press.
- Carelli M, Gnocchi S, Fancelli S, Mengoni A, Paffetti D et al. (2000) Genetic diversity and dynamics of *Sinorhizobium meliloti* populations nodulating different alfalfa varieties in Italian soils. *Appl Environ Microbiol* 66: 4785-4789. doi:10.1128/AEM.66.11.4785-4789.2000. PubMed: 11055924.
- Bailly X, Olivier I, De Mita S, Cleyet-Marel JC, Béna G (2006) Recombination and selection shape the molecular diversity pattern of nitrogen-fixing *Sinorhizobium* sp. associated to *Medicago*. *Mol Ecol* 15: 2719-2734. doi:10.1111/j.1365-294X.2006.02969.x. PubMed: 16911196.
- Roumiantseva ML, Andronov EE, Sharypova LA, Dammann-Kalinowski T, Keller M (2002) Diversity of *Sinorhizobium meliloti* from the central Asian alfalfa gene center. *Appl Environ Microbiol* 68: 4694-4697. doi: 10.1128/AEM.68.9.4694-4697.2002. PubMed: 12200335.
- Sorroche FG, Spesia MB, Zorreguieta A, Giordano W (2012) A positive correlation between bacterial autoaggregation and biofilm formation in native *Sinorhizobium meliloti* isolates from Argentina. *Appl Environ Microbiol* 78: 4092-4101. doi:10.1128/AEM.07826-11. PubMed: 22492433.
- Hartmann A, Rothballer M, Schmid M (2008) Lorenz Hiltner, a pioneer in rhizosphere microbial ecology and soil bacteriology research. *Plant Soil* 312: 7-14. doi:10.1007/s11104-007-9514-z.
- Pini F, Frascella A, Santopolo L, Bazzicalupo M, Biondi EG et al. (2012) Exploring the plant-associated bacterial communities in *Medicago sativa* L. *BMC Microbiol* 12: 1471-2180.
- Castellanos T, Dohrmann AB, Imfeld G, Baumgarte S, Tebbe CC (2009) Search of environmental descriptors to explain the variability of the bacterial diversity from maize rhizospheres across a regional scale. *Eur J Soil Biol* 45: 383-393. doi:10.1016/j.ejsobi.2009.07.006.
- Costa R, Götz M, Mrozek N, Lottmann J, Berg G et al. (2006) Effects of site and plant species on rhizosphere community structure as revealed by molecular analysis of microbial guilds. *FEMS Microbiol*

- Ecol 56: 236-249. doi:10.1111/j.1574-6941.2005.00026.x. PubMed: 16629753.
39. Marschner P, Yang CH, Lieberei R, Crowley D (2001) Soil and plant specific effects on bacterial community composition in the rhizosphere. *Soil Biol Biochem* 33: 1437-1445. doi:10.1016/S0038-0717(01)00052-9.
 40. Angle JS, Gagliardi JV, McIntosh MS, Levin MA (1996) Enumeration and expression of bacterial counts in the rhizosphere (G Stotzky/JM Bollag. *Soil Biochem* 9: 233-251.
 41. Sambrook J, Fritsch EF, Maniatis F (1989) Propagation and maintenance of bacterial strains and visuses. In: J Sambrook/EF Fritsch/F Maniatis. *Molecular cloning: A laboratory manual*. p. 68.
 42. O'Toole GA, Kolter R (1998) Initiation of biofilm formation in *Pseudomonas fluorescens* WCS365 proceeds via multiple, convergent signalling pathways: a genetic analysis. *Mol Microbiol* 28: 449-461. doi: 10.1046/j.1365-2958.1998.00797.x. PubMed: 9632250.
 43. Beringer JE (1974) R factor transfer in *Rhizobium leguminosarum*. *J Gen Microbiol* 84: 188-198. doi:10.1099/00221287-84-1-188. PubMed: 4612098.
 44. Weisburg WG, Barns SM, Pelletier DA, Lane DJ (1991) 16S ribosomal DNA amplification for phylogenetic study. *J Bacteriol* 173: 697-703. PubMed: 1987160.
 45. Nievas F, Bogino P, Nocelli N, Giordano W (2012) Genotypic analysis of isolated peanut-nodulating rhizobial strains reveals differences among populations obtained from soils with different cropping histories. *Appl Soil Ecol* 53: 74-82. doi:10.1016/j.apsoil.2011.11.010.
 46. Willems A, Coopman R, Gillis M (2001) Phylogenetic and DNA-DNA hybridization analyses of *Bradyrhizobium* species. *Int J Syst Evol Microbiol* 51: 111-117. PubMed: 11211247.
 47. Altschul SF, Madden TL, Schäffer AA, Zhang J, Zhang Z et al. (1997) Gapped BLAST and PSI-BLAST: a new generation of protein database search. *Nucleic Acids Res* 25: 3389-3402. doi:10.1093/nar/25.17.3389. PubMed: 9254694.
 48. Balzarini M, Di Rienzo J (2003) Info-Gen: Software Para Análisis Estadístico de Datos Genéticos. Córdoba: National University of Córdoba Press.
 49. Sorroche FG, Rinaudi LV, Zorreguieta A, Giordano W (2010) EPS II-dependent autoaggregation of *Sinorhizobium melleoti* planktonic cells. *Curr Microbiol* 61: 465-470. doi:10.1007/s00284-010-9639-9. PubMed: 20383768.
 50. Nievas F, Bogino P, Sorroche F, Giordano W (2012) Detection, Characterization, and Biological Effect of Quorum-Sensing Signaling Molecules in Peanut-Nodulating Bradyrhizobia. *Sensors* 12: 2851-2873. doi:10.3390/s120302851. PubMed: 22736981.
 51. Leigh JA, Signer ER, Walker GC (1985) Exopolysaccharide-deficient mutants of *Rhizobium melleoti* that form ineffective nodules. *Proc Natl Acad Sci U S A* 82: 6231-6235. doi:10.1073/pnas.82.18.6231. PubMed: 3862129.
 52. McClean KH, Winson MK, Taylor A, Chhabra SR, Camara M et al. (1997) Quorum sensing and Chromobacterium violaceum: exploitation of violacein production and inhibition for the detection of N-acylhomoserine lactones. *Microbiology* 143: 3703-3711. doi: 10.1099/00221287-143-12-3703. PubMed: 9421896.
 53. Farrand SK, Qin Y, Oger P (2002) Quorum-sensing system of *Agrobacterium* plasmids: Analysis and utility. *Methods Enzymol* 358: 452-484. doi:10.1016/S0076-6879(02)58108-8. PubMed: 12474406.
 54. Fujishige NA, Kapadia NN, Hirsch AM (2006) A feeling for the micro-organism: structure on a small scale. *Biofilms on plant roots*. *Bot J Linn Soc* 150: 79-88. doi:10.1111/j.1095-8339.2006.00492.x.
 55. Lünsdorf H, Erb RW, Abraham WR, Timmis KN (2000) 'Clay hitches': a novel interaction between bacteria and clay minerals. *Environ Microbiol* 2: 161-168. doi:10.1046/j.1462-2920.2000.00086.x. PubMed: 11220302.
 56. Torsvik V, Sorheim R, Goksoy J (1996) Total bacterial diversity in soil and sediment communities-a review. *J Ind Microbiol* 17: 170-178. doi: 10.1007/BF01574690.
 57. Agarar B, Wall LG, Valverde C (2012) Specific enumeration and analysis of the community structure of culturable pseudomonads in agricultural soils under no-till management in Argentina. *Appl Soil Ecol* 61: 305-319. doi:10.1016/j.apsoil.2011.11.016.
 58. Houlden A, Timms-Wilson TM, Day MJ, Bailey MJ (2008) Influence of plant developmental stage on microbial community structure and activity in the rhizosphere of three field crops. *FEMS Microbiol Ecol* 65: 193-201. doi:10.1111/j.1574-6941.2008.00535.x. PubMed: 18616582.
 59. Smalla K, Sessitsch A, Hartmann A (2006) The Rhizosphere: 'soil compartment influenced by the root'. *FEMS Microbiol Ecol* 56: 165. doi: 10.1111/j.1574-6941.2006.00148.x.
 60. Dell'Amico E, Cavalca L, Andreoni V (2005) Analysis of rhizobacterial communities in perennial Gramineae from polluted water meadow soil, and screening of metal-resistant, potentially plant growth-promoting bacteria. *FEMS Microbiol Ecol* 52: 153-162. doi:10.1016/j.femsec.2004.11.005. PubMed: 16329902.
 61. Andreote FD, Mendes R, Andreote FD, Rossetto PB, Labate CA et al. (2008) Transgenic tobacco revealing altered bacterial diversity in the rhizosphere during early plant development. *Anton Leeuw* 93: 415-424. doi:10.1007/s10482-007-9219-6. PubMed: 18181027.
 62. Pongsilp N, Nimnoi P, Lumyong S (2012) Genotypic diversity among rhizospheric bacteria of three legumes assessed by cultivation-dependent and cultivation-independent techniques. *World J Microbiol Biotechnol* 28: 615-626. doi:10.1007/s11274-011-0855-7. PubMed: 22806857.
 63. Kuklinsky-Sobral J, Araújo WL, Mendes R, Geraldi IO, Pizzirani-Kleiner AA et al. (2004) Isolation and characterization of soybean-associated bacteria and their potential for plant growth promotion. *Environ Microbiol* 6: 1244-1251. doi:10.1111/j.1462-2920.2004.00658.x. PubMed: 15560822.
 64. Mark GL, Dow JM, Kiely PD, Higgins H, Haynes J et al. (2005) Transcriptome profiling of bacterial responses to root exudates identifies genes involved in microbe-plant interactions. *Proc Natl Acad Sci U S A* 102: 17454-17459. doi:10.1073/pnas.0506407102. PubMed: 16301542.
 65. Henry A, Doucette W, Norton J, Bugbee B (2007) Changes in crested wheatgrass root exudation caused by flood, drought, and nutrient stress. *J Environ Qual* 36: 904-912. doi:10.2134/jeq2006.0425sc. PubMed: 17485723.
 66. Wardle DA (1998) Controls of temporal variability of the soil microbial biomass: a global-scale synthesis. *Soil Biol Biochem* 30: 1627-1637. doi:10.1016/S0038-0717(97)00201-0.
 67. Nogueira MA, Albino UB, Brandao-Junior O, Braun G, Cruz MF et al. (2006) Promising indicators for assessment of agroecosystems alteration among natural, reforested and agricultural land use in southern Brazil. *Agric Ecosyst Environ* 115: 237-247. doi:10.1016/j.agee.2006.01.008.
 68. Udvardi MK, Karak K, Wandrey M, Montanari O, Murray J et al. (2007) Legume transcription factors: global regulators of plant development and response to the environment. *Plant Physiol* 144: 538-549. doi: 10.1104/pp.107.098061. PubMed: 17556517.
 69. Albareda M, Dardanelli MS, Sousa C, Megias M, Temprano F et al. (2006) Factors affecting the attachment of rhizospheric bacteria to bean and soybean roots. *FEMS Microbiol Lett* 259: 67-73. doi:10.1111/j.1574-6968.2006.00244.x. PubMed: 16684104.
 70. Xu Y, Wang G, Jin J, Liu J, Zhang Q, Xiaobing L (2009) Bacterial communities in soybean rhizosphere in response to soil type, soybean genotype, and their growth stage. *Soil Biol Biochem* 41: 919-925. doi: 10.1016/j.soilbio.2008.10.027.
 71. Vanderlinde EM, Harrison JJ, Muszyński A, Carlson RW, Turner RJ et al. (2010) Identification of a novel ABC transporter required for desiccation tolerance, and biofilm formation in *Rhizobium leguminosarum* bv. *viciae* 3841. *FEMS Microbiol Ecol* 71: 327-340. doi: 10.1111/j.1574-6941.2009.00824.x. PubMed: 20030718.
 72. Velázquez-Hernández ML, Baizabal-Aguirre VM, Cruz-Vázquez F, Trejo-Contreras MJ, Fuentes-Ramírez LE et al. (2011) Gluconacetobacter diazotrophicus levansucrase is involved in tolerance to NaCl, sucrose and desiccation, and in biofilm formation. *Arch Microbiol* 193: 137-149. doi:10.1007/s00203-010-0651-z. PubMed: 21103984.
 73. Sutherland IW (2001) Biofilm exopolysaccharides: a strong and sticky framework. *Microbiology* 147: 3-9. PubMed: 11160795.
 74. Alami Y, Achouak W, Marol C, Heulin T (2000) Rhizosphere soil aggregation and plant growth promotion of sunflowers by an exopolysaccharide-producing *Rhizobium* sp. isolated from sunflower roots. *Appl Environ Microbiol* 66: 3393-3398. doi:10.1128/AEM.66.8.3393-3398.2000. PubMed: 10919797.
 75. Dardanelli MS, Fernández de Córdoba FJ, Rosario Espuny M, Rodríguez Carvajal MA, Díaz Soria (2008) Effect of *Azospirillum brasilense* coinoculated with *Rhizobium* on *Phaseolus vulgaris* flavonoids and Nod factor production under salt stress. *Soil Biol Biochem* 40: 2713-2721. doi:10.1016/j.soilbio.2008.06.016.
 76. Dimkpa C, Weinand T, Asch F (2009) Plant-rhizobacteria interactions alleviate abiotic stress conditions. *Plant Cell Environ* 32: 1682-1694. doi:10.1111/j.1365-3040.2009.02028.x. PubMed: 19671096.
 77. Bais HP, Weir TL, Perry LG, Gilroy S, Vivanco JM (2006) The role of root exudates in rhizosphere interactions with plants and other organisms. *Annu Rev Plant Biol* 57: 233-266. doi:10.1146/annurev.arplant.57.032905.105159. PubMed: 16669762.
 78. Farooq M, Wahid A, Kobayashi N, Fujita D, Basra SMA (2009) Plant drought stress: effects, mechanisms and management. *Agron Sustain Dev* 29: 185-212. doi:10.1051/agro:2008021.

79. Billi D, Potts M (2000) Life without water: responses of prokaryotes to desiccation. In: KB Storey, JM Storey. Environmental stressors and gene responses. pp. 181-192.
80. Cheng HP, Walker GC (1998) Succinoglycan production by *Rhizobium meliloti* is regulated through the ExoS-ChvI two-component regulatory system. *J Bacteriol* 180: 20–26. PubMed: 9422587.
81. Lloret J, Wulff BB, Rubio JM, Downie, Bonilla I et al. (1998) Exopolysaccharide II production is regulated by salt in the halotolerant strain *Rhizobium meliloti* EFB1. *Appl Environ Microbiol* 64: 1024-1028. PubMed: 9501442.
82. Lloret J, Bolanos L, Mercedes Lucas M, Peart JM, Brewin NJ et al. (1995) Ionic stress and osmotic pressure induce different alterations in the lipopolysaccharide of a *Rhizobium meliloti* strain. *Appl Environ Microbiol* 61: 3701–3704. PubMed: 16535151.
83. Campbell GR, Sharypova LA, Scheidle H, Jones KM, Niehaus K (2003) Striking complexity of lipopolysaccharide defects in a collection of *Sinorhizobium meliloti* mutants. *J Bacteriol* 185: 3853–3862. doi: 10.1128/JB.185.13.3853-3862.2003. PubMed: 12813079.
84. Bhattacharya I, Das HR (2003) Cell surface characteristics of two halotolerant strains of *Sinorhizobium meliloti*. *Microbiol Res* 158: 187–194. doi:10.1078/0944-5013-00195. PubMed: 12906393.
85. Rickard AH, Gilbert P, High NJ, Kolenbrander PE, Handley PS (2003) Bacterial coaggregation: an integral process in the development of multi-species biofilms. *Trends Microbiol* 11: 94–100. doi:10.1016/S0966-842X(02)00034-3. PubMed: 12598132.
86. Ghigo JM (2001) Natural conjugative plasmids induce bacterial biofilm development. *Nature* 412: 442–445. doi:10.1038/35086581. PubMed: 11473319.
87. Burmølle M, Webb JS, Rao D, Hansen LH, Sørensen SJ et al. (2006) Enhanced biofilm formation and increased resistance towards antimicrobial agents and bacterial invasion are caused by synergistic interactions in multi-species biofilms. *Appl Environ Microbiol* 72: 3916–3923. doi:10.1128/AEM.03022-05. PubMed: 16751497.
88. Rickard AH, Palmer RJ, Blehert JR, Campagna DS, Semmelhack SR (2006) Autoinducer. p. 2: a concentration-dependent signal for mutualistic bacterial biofilm growth *Mol Microbiol* 60: 1446–1456.
89. Stewart PS, Camper AK, Handran SD, Huang C, Warnecke M (1997) Spatial distribution and coexistence of *Klebsiella pneumoniae* and *Pseudomonas aeruginosa* in biofilms. *Microb Ecol* 33: 2–10. doi: 10.1007/s002489900002. PubMed: 9039760.
90. Christensen BB, Haagensen JA, Heydorn A, Molin S (2002) Metabolic commensalism and competition in a two-species microbial consortium. *Appl Environ Microbiol* 68: 2495–2502. doi:10.1128/AEM.68.5.2495-2502.2002. PubMed: 11976126.
91. Sharma A, Inagaki S, Sigurdson W, Kuramitsu HK (2005) Synergy between *Tannerella forsythia* and *Fusobacterium nucleatum* in biofilm formation. *Oral Microbiol Immunol* 20: 39–42. doi:10.1111/j.1399-302X.2004.00175.x. PubMed: 15612944.
92. Sørensen SJ, Bailey M, Hansen LH, Kroer N, Wuertz S (2005) Studying plasmid horizontal transfer in situ: a critical review. *Nat Rev Microbiol* 3: 700–710. doi:10.1038/nrmicro1232. PubMed: 16138098.
93. Gürtler V, Stanisich VA (1996) New approaches to typing and identification of bacteria using the 16S–23S rDNA spacer region. *Microbiology* 142: 3–16. doi:10.1099/13500872-142-1-3. PubMed: 8581168.
94. Kirk JL, Beaudette LA, Hart M, Moutoglou P, Klironomos JN et al. (2004) Methods of studying soil microbial diversity. *J Microbiol Methods* 58: 169–188. doi:10.1016/j.mimet.2004.04.006. PubMed: 15234515.
95. Han LL, Wang ET, Lu YL, Zhang YF, Sui XH (2009) *Bradyrhizobium* spp. and *Sinorhizobium fredii* are predominant in root nodules of *Vigna angularis*, a native legume crop in the subtropical region of China. *J Microbiol* 47: 287–296. doi:10.1007/s12275-009-0001-5. PubMed: 19557346.
96. Zhang F, She YH, Ma SS, Hu JM, Banat IM et al. (2010) Response of microbial community structure to microbial plugging in a mesothermic petroleum reservoir in China. *Appl Microbiol Biotechnol* 88: 1413–1422. doi:10.1007/s00253-010-2841-7. PubMed: 20803140.
97. Dunbar J, Ticknor LO, Kuske CR (2001) Phylogenetic specificity and reproducibility and new method for analysis of terminal restriction profiles of 16S rRNA genes from bacterial communities. *Appl Environ Microbiol* 67: 190–197. doi:10.1128/AEM.67.1.190-197.2001. PubMed: 11133445.
98. Gans J, Wolinsky M, Dunbar J (2005) Computational improvements reveal great bacterial diversity and high metal toxicity in soil. *Science* 309: 1387–1390. doi:10.1126/science.1112665. PubMed: 16123304.
99. Ulrich A, Becker R (2006) Soil is a key determinant of the bacterial community structure in arable soils. *FEMS Microbiol Ecol* 56: 430–443. doi:10.1111/j.1574-6941.2006.00085.x. PubMed: 16689875.
100. Smalla K, Oros-Sichler M, Milling A, Heuer H, Baumgarte S (2007) Bacterial diversity of soils assessed by DGGE, T-FLP and SSCP fingerprints of PCR-amplified 16S rRNA gene fragments: Do the different methods provide similar results? *J Microbiol Methods* 69: 470–479. doi:10.1016/j.mimet.2007.02.014. PubMed: 17407797.
101. Yang JK, Xie FL, Zou J, Zhou Q, Zhou JC (2005) Polyphasic characteristics of Bradyrhizobia isolated from nodules of peanut (*Arachis hypogaea*) in China. *Soil Biol Biochem* 37: 141–153. doi: 10.1016/j.soilbio.2004.06.016.
102. Farina R, Beneduzi A, Ambrosini A, Campos S, Brito-Lisboa B et al. (2012) Diversity of plant growth-promoting rhizobacteria communities associated with the stages of canola growth. *Appl Soil Ecol* 55: 44–52. doi:10.1016/j.apsoil.2011.12.011.
103. Garbeva P, van Veen JA, van Elsas JD (2004) Assessment of the diversity, and antagonism towards *Rhizoctonia solani* AG3, of *Pseudomonas* species in soil from different agricultural regimes. *FEMS Microbiol Ecol* 47: 51–64. doi:10.1016/S0168-6496(03)00234-4. PubMed: 19712346.
104. Shi JY, Yuan XF, Lin HR, Yang YQ, Li ZY (2011) Differences in soil properties and bacterial communities between the rhizosphere and bulk soil and among different production areas of the medicinal plant *Fritillaria thunbergii*. *Int J Mol Sci* 12: 3770–3785. doi:10.3390/ijms12063770. PubMed: 21747705.
105. Garbeva P, van Veen JA, van Elsas JD (2004) Microbial diversity in soil: selection microbial populations by plant and soil type and implications for disease suppressiveness. *Annu Rev Phytopathol* 42: 243–270. doi:10.1146/annurev.phyto.42.012604.135455. PubMed: 15283667.
106. Garbeva P, van Elsas J, van Veen JA (2008) Rhizosphere microbial community and its response to plant species and soil history. *Plant Soil* 302: 19–32. doi:10.1007/s11104-007-9432-0.
107. Berg G, Smalla K (2009) Plant species and soil type cooperatively shape the structure and function of microbial communities in the rhizosphere. *FEMS Microbiol Ecol* 68: 1–13. doi:10.1111/j.1574-6941.2009.00654.x. PubMed: 19243436.
108. Appuhn A, Joergensen RG (2006) Microbial colonization of roots as a function of plant species. *Soil Biol Biochem* 38: 1040-1051. doi: 10.1016/j.soilbio.2005.09.002.
109. Mering C, Hugenholtz P, Raes J, Tringe SG, Doerks T et al. (2007) Quantitative phylogenetic assessment of microbial communities in diverse environments. *Science* 315: 1126–1130. doi:10.1126/science.1133420. PubMed: 17272687.
110. Karagöz K, Ates F, Karagöz H, Kotan R, Çakmakçı R (2012) Characterization of plant growth-promoting traits of bacteria isolated from the rhizosphere of grapevine grown in alkaline and acidic soils. *Eur J Soil Biol* 50: 144-150. doi:10.1016/j.ejsobi.2012.01.007.
111. Stach JEM, Burns RG (2002) Enrichment versus biofilm culture: a functional and phylogenetic comparison of polycyclic aromatic hydrocarbon-degrading microbial communities. *Environ Microbiol* 4: 169–182. doi:10.1046/j.1462-2920.2002.00283.x. PubMed: 12000317.
112. Nimnoi P, Lumyong S, Pongsilp N (2011) Impact of rhizobial inoculants on rhizosphere bacterial communities of three medicinal legumes assessed by denaturing gradient gel electrophoresis (DGGE). *Ann Microbiol* 61: 237–245. doi:10.1007/s13213-010-0128-y.
113. Ying YX, Ding WL, Li Y (2012) Characterization of soil bacterial communities in rhizospheric and nonrhizospheric soil of *Panax ginseng*. *Biochem Genet*, 50: 848–859. doi:10.1007/s10528-012-9525-1. PubMed: 22875735.
114. An DS, Im WT, Yang HC, Lee ST (2006) *Shinella granuli* gen. nov., sp. nov., and proposal of the reclassification of *Zoogloea ramigera* ATCC 19623 as *Shinella zoogloeoides* sp. nov. *Int J Syst Evol Microbiol* 56: 443–448. doi:10.1099/ijs.0.63942-0. PubMed: 16449455.
115. Bogino P, Banchio E, Rinaudi L, Cerioni G, Bonfiglio C, Giordano W (2006) Peanut (*Arachis hypogaea*) response to inoculation with *Bradyrhizobium* sp. in soils of Argentina. *Ann Appl Biol* 148: 207-212. doi:10.1111/j.1744-7348.2006.00055.x.
116. Merckx R, Dijkstra A, Hartog AD, Veen JAV (1987) Production of root-derived material and associated microbial growth in soil at different nutrient levels. *Biol Fert Soils* 5: 126–132.
117. Khamna S, Yokota A, Lumyong S (2009) Actinomycetes isolated from medicinal plant rhizosphere soil: diversity and screening of antifungal compound, indole-3-acetic acid and siderophore production. *World J Microbiol Biotechnol* 25: 649–655. doi:10.1007/s11274-008-9933-x.
118. Parsek MR, Greenberg EP (2005) Sociomicrobiology: the connections between quorum sensing and biofilms. *Trends Microbiol* 13: 27–33. doi: 10.1016/j.tim.2004.11.007. PubMed: 15639629.
119. Hooshangi S, Bentley WE (2008) From unicellular properties to multicellular behavior: bacteria quorum sensing circuitry and

- applications. *Curr Opin Biotechnol* 19: 550-555. doi:10.1016/j.copbio.2008.10.007. PubMed: 18977301.
120. Klausen M, Heydorn A, Ragas P, Lambertsen L, Aaes-Jørgensen A (2003) Biofilm formation by *Pseudomonas aeruginosa* wild type, flagella and type IV pili mutants. *Mol Microbiol* 48: 1511-1524. doi: 10.1046/j.1365-2958.2003.03525.x. PubMed: 12791135.
 121. Verstraeten N, Braeken K, Debkumari B, Fauvart M, Fransaer J (2008) Living on a surface: swarming and biofilm formation. *Trends Microbiol* 16: 496-506. doi:10.1016/j.tim.2008.07.004. PubMed: 18775660.
 122. Rinaudi LV, González JE (2009) The low-molecular-weight fraction of exopolysaccharide II from *Sinorhizobium meliloti* is a crucial determinant of biofilm formation. *J Bacteriol* 191: 7216-7224. doi: 10.1128/JB.01063-09. PubMed: 19783627.
 123. Williams P (2007) Quorum sensing, communication and cross-kingdom signalling in the bacterial world. *Microbiology* 153: 3923-3938. doi: 10.1099/mic.0.2007/012856-0. PubMed: 18048907.
 124. Li YH, Tian X (2012) Quorum Sensing and Bacterial Social Interactions in Biofilms. *Sensors* 12: 2519-2538. doi:10.3390/s120302519. PubMed: 22736963.
 125. Conrad JC (2012) Physics of bacterial near-surface motility using flagella and type IV pili: implications for biofilm formation. *Res Microbiol* 163: 619-629. doi:10.1016/j.resmic.2012.10.016. PubMed: 23103335.