

# Subcellular localization of $\beta$ -arrestin1 and its prognostic value in lung adenocarcinoma

Xiaowei Li, MM<sup>b</sup>, Keying Che, MM<sup>a</sup>, Liguang Wang, MD<sup>c</sup>, Tiehong Zhang, MD<sup>c</sup>, Guanghui Wang, MD<sup>d</sup>, Zhaofei Pang, MD<sup>a</sup>, Hongchang Shen, MD<sup>c,\*</sup>, Jiajun Du, MD, PhD<sup>a,d,\*</sup>

## Abstract

$\beta$ -Arrestins play important roles in cancer progression, and the subcellular localization of  $\beta$ -arrestin1 has been receiving increasingly more attention. Intriguingly, several studies, including some of our previous work, showed that the effects of  $\beta$ -arrestin1 on outcomes of cancer patients were controversial.

Specimens were obtained from 133 patients with lung adenocarcinoma. Immunohistochemistry was used to detect the expression of  $\beta$ -arrestin1 and p300 in the collected tissues. The Kaplan-Meier analysis and Cox proportional hazards regression were used to examine the relationship between  $\beta$ -arrestin1 and patient survival.

We found no significant association between  $\beta$ -arrestin1 and clinicopathological variables. The Kaplan-Meier plot showed that patients with high expression of  $\beta$ -arrestin1 (especially in the nucleus) had a poorer overall survival (OS) and shorter disease-free survival (DFS) ( $P = .026$ ,  $P = .015$ ). Additionally, high p300 expression also resulted in worse OS ( $P = .039$ ). Following the univariate analysis, high expressions of nuclear  $\beta$ -arrestin1 and p300 were classed as poor prognostic factors for both OS ( $P = .016$ ) and DFS ( $P = .025$ ).

The expression of  $\beta$ -arrestin1 in the nucleus is associated with increased malignant tendency of lung adenocarcinoma, and the predictive value of  $\beta$ -arrestin1 may be optimized by combining information about the expression of p300 acetyltransferase.

**Abbreviations:** AKT = protein kinase B, DFS = disease-free survival, GPCR = G protein-coupled receptors, GTP = guanosine triphosphate, MAPK = mitogen-activated protein kinase, NSCLC = non-small cell lung cancer, OS = overall survival, PI3K = phosphatidylinositol 3 kinase, PTEN = phosphatase and tensin homolog.

**Keywords:**  $\beta$ -arrestin1, lung adenocarcinoma, p300, prognosis, subcellular localization

## 1. Introduction

Lung adenocarcinoma, with nearly 1.4 million deaths and approximately 1.6 million new cases each year, accounts for almost 50% of all lung cancers, which are the leading cause of

cancer-related death worldwide. Even though systemic management, followed by surgery, has progressed during the past decade, tumor recurrence and metastasis are still the most important events that contribute to the high mortality.<sup>[1]</sup>

$\beta$ -Arrestins, including  $\beta$ -arrestin1 and  $\beta$ -arrestin2, regulate cellular functions, such as cell migration and apoptotic signaling.  $\beta$ -arrestins were initially appreciated for their capacity to sterically hinder the GPCR (G protein-coupled receptors), ultimately resulting in receptor desensitization and endocytosis. Apart from that,  $\beta$ -arrestins can also function as versatile protein scaffolding platforms within the cytosol, ensuring the transmission of relevant information in space and time, and thus, an appropriate cellular response. This function involves regulating the activities and/or subcellular distribution of their binding partners, via receptor-dependent or receptor-independent processes.<sup>[2]</sup> Due to various receptors and signaling pathways,  $\beta$ -arrestin1 may play both negative and positive regulatory roles in the neoplasm.

Intriguingly, our recent studies on the prognostic value of  $\beta$ -arrestin1 in lung cancer generated conflicting results. At the focus of the controversy is whether the expression of  $\beta$ -arrestin1 is an independent prognostic marker in operable patients with lung cancer.<sup>[3–5]</sup>

Recently, an increasing amount of research has been focusing on the subcellular distribution of  $\beta$ -arrestins. Although both  $\beta$ -arrestin1 and  $\beta$ -arrestin2 contain nuclear localization signals, only  $\beta$ -arrestin2 has a nuclear export signal. Consequently,  $\beta$ -arrestin1 is found in both the cytoplasm and nucleus, whereas  $\beta$ -arrestin2 is generally localized in the cytoplasm.<sup>[6–8]</sup>

About a decade ago, a landmark study brought to light a novel nuclear role of  $\beta$ -arrestin1 in the regulation of gene transcription.<sup>[9]</sup> Since then, other studies have confirmed this nuclear function and described its contribution to tumor survival, proliferation,

Editor: Alfons Lawen.

XL and KC contributed equally to this work. JD and HS contributed to the conception and design of the study. XL, HS, LW, and KC developed the methodology. XL, HS, TZ, and GW acquired the data. XL, HS, LW, KC, TZ, GW, ZP, and JD analyzed and interpreted the data. XL and HS wrote, reviewed, and/or revised the manuscript. LW, KC, TZ, GW, and ZP provided administrative, technical, or material support. JD and XL supervised the study.

The work was supported by Key Research and Development Plan of Shandong Province (2015GSF118109 and 2015GSF118063), National Science Foundation of China (project 81672288).

The authors report no conflicts of interest.

<sup>a</sup>Institute of Oncology, <sup>b</sup>Department of Anesthesiology, <sup>c</sup>Department of Oncology, <sup>d</sup>Department of Thoracic Surgery, Shandong Provincial Hospital Affiliated to Shandong University, Jinan, P.R. China.

\*Correspondence: Hongchang Shen, Department of Oncology, Shandong Provincial Hospital Affiliated to Shandong University, 324 Jingwu Road, Jinan, 250021 P.R. China (e-mail: shc11312@163.com). Jiajun Du, Department of Thoracic Surgery and Institute of Oncology, Shandong Provincial Hospital Affiliated to Shandong University, 324 Jingwu Road, Jinan, 250021, P.R. China (e-mail: dujiajun@sdu.edu.cn).

Copyright © 2017 the Author(s). Published by Wolters Kluwer Health, Inc. This is an open access article distributed under the Creative Commons Attribution-NoDerivatives License 4.0, which allows for redistribution, commercial and non-commercial, as long as it is passed along unchanged and in whole, with credit to the author.

Medicine (2017) 96:45(e8450)

Received: 21 September 2016 / Received in final form: 19 September 2017 /

Accepted: 5 October 2017

<http://dx.doi.org/10.1097/MD.00000000000008450>

angiogenesis, and invasion and metastasis, in epithelial ovarian cancer, lung tumors, breast cancer cells, and prostate cancer.<sup>[10–13]</sup> Upon stimulation of different receptors or in the presence of other conditions (eg, hypoxia),  $\beta$ -arrestin1 undergoes nuclear translocation and acts as a nuclear scaffold, recruiting histone acetyltransferase p300 to the transcription factor or transcription regulator. This results in increased gene expression, through the acetylation of histone and/or non-histone transcription factors. Although there are conflicting reports on whether p300 is a positive or negative regulator of cancer progression, its overexpression is indicative of poor prognosis in most human malignancies, including lung cancer,<sup>[14,15]</sup> breast cancer,<sup>[16]</sup> hepatocellular carcinoma,<sup>[17]</sup> colorectal cancer,<sup>[18]</sup> prostate cancer,<sup>[19]</sup> nasopharyngeal carcinoma,<sup>[20]</sup> and laryngeal cancer.<sup>[21]</sup>

Based on the aforementioned findings, we wondered whether the different functions of  $\beta$ -arrestin1 in the cytoplasm and nucleus are responsible for the contradictory results. Therefore, we performed a cohort retrospective study to investigate the expression of cytosolic and nuclear  $\beta$ -arrestin1, respectively, and examined their association with clinicopathological characteristics and prognosis. As p300 plays an important role in facilitating chromatin transcription mediated by  $\beta$ -arrestin1, we hypothesized that the combined detection of nuclear  $\beta$ -arrestin1 and p300 could aid in identifying patients with increased risk of cancer recurrence, as well as provide a theoretical basis for further tailored therapy of lung adenocarcinoma.

## 2. Materials and methods

### 2.1. Patients and sample collection

Specimens were obtained from 133 patients with lung adenocarcinoma who had undergone surgical resection of primary tumor, between June 2008 and August 2009, in the Department of Thoracic Surgery, Shandong Provincial Hospital Affiliated to Shandong University. All procedures were in accordance with the ethical standards of the Ethics Committee of the Provincial Hospital Affiliated to Shandong University. The main inclusion criteria were histological diagnosis of lung adenocarcinoma and complete surgical resection. None of the patients had received adjuvant chemotherapy, radiotherapy, or immunotherapy before surgery. Moreover, we also excluded patients with concurrent malignant disease or other previous cancers. Clinical data, including survival, were derived from the Bio-Bank of Shandong Provincial Hospital. Follow-up data were available for all patients.

Clinical information was obtained by reviewing the medical archives. Relevant data available included patient's age, gender, smoking history, tumor size and location, grade of differentiation, lymph-node metastases, and pathologic staging. The pathological diagnosis was confirmed by 2 senior pathologists. Pathologic staging was performed according to the seventh edition of the TNM classification, of the American Joint Committee on Cancer, and histological type was determined according to the World Health Organization classification.<sup>[22,23]</sup>

Patients were followed up every 3 months for the first year post-surgery and every 6 months for the following years, with a median follow-up period of 42 months (range: 1–73 months). Overall survival (OS) was defined as the time from the date of surgery to the last date of follow-up for patients who remained alive, or to the date of death. Disease-free survival (DFS) was defined as the time from the date of surgery to the date of recurrence, death, or to the end of observation. The REMARK guidelines for reporting tumor marker studies were used.<sup>[24]</sup>

### 2.2. Immunohistochemistry

Paraffin-embedded tissue samples were collected, cut into 3- $\mu$ m thick sections and fixed on silicified slides. After deparaffined and rehydrated, the sections were heated in 0.01 mol/L saline citrate buffer at 96°C to 98°C for 15 minutes to unmask antigens, treated with 3% hydrogen peroxide for 15 minutes at room temperature to inactivate endogenous peroxidase and incubated with 10% goat serum for 30 minutes at room temperature to block nonspecific binding. Then slides were incubated overnight at 4°C with a rabbit monoclonal to  $\beta$ -arrestin1 antibody (Abcam Biotechnology, ab32099; diluted, 1:200) or a rabbit polyclonal to p300 antibody (Abcam Biotechnology, ab10485; diluted, 1:1000). The subsequent steps were according to the instructions of Zymed (streptavidin-peroxidase method). The sections were then counterstained with hematoxylin before dehydration and mounting. For negative control, we carried out the same steps as described previously while the antibody was replaced by phosphate-buffered saline.

### 2.3. Evaluation of immunostaining

To assess the immunostaining, the intensity reactivity score was used, assessing the staining intensity as negative (= 0), weak (= 1), moderate (= 2), or strong (= 3). Reactivity was determined by the fraction of positive cells in relation to the whole cancer areas, which was scored as 0 (<10%), 1 (11–25%), 2 (26–50%), 3 (51–80%), and 4 (81–100%). At least 10 fields of each specimen were selected. A multiplier of fraction and intensity was calculated for each score, and a mean value of all annotated scores was used in the analyses. The final scores were stratified as low expression (score = 0–6) and high expression (score = 8–12). The immunoreactivity score was determined by 2 independent observers who were blinded to the clinicopathological information of each sample, and discordant cases were discussed using a dual-head microscope, to determine the final score.

### 2.4. Statistical analysis

The chi-square test and Fisher exact test were performed to analyze the group differences. The Kaplan-Meier method and subsequent evaluation by log-rank test were applied for survival analysis. Cox regression proportional hazard's modeling was used to estimate the impact of prognostic factors on OS and DFS. All of the tests were 2-sided, and *P* values below .05 were considered statistically significant. Statistical analysis was performed using SPSS Statistics version 19.0 (SPSS Inc, Chicago, IL).

## 3. Results

### 3.1. Association of $\beta$ -arrestin1 and p300 expression with clinicopathological parameters

In total, 41 females and 82 males were enrolled in this study, and the median age was 58 years (range: 20–76 years). Table 1 shows the results of the statistical analysis on the clinicopathological variables. No statistically significant correlation was observed among  $\beta$ -arrestin1(C),  $\beta$ -arrestin1(N), or p300 expression and clinicopathological parameters (age, sex, smoking status, drinking status, degree of differentiation, tumor location, T stage, lymph node involvement, pathological stage, or surgical type).

**Table 1**  
**Association among  $\beta$ -arrestin1(C),  $\beta$ -arrestin1(N), and p300 expression and clinicopathological variables.**

Variable		$\beta$ -arrestin1(C)			$\beta$ -arrestin1(N)			P300		
		Low	High	P	Low	High	P	Low	High	P
Age	<60	30	42	.860	39	33	.863	35	37	.224
	$\geq$ 60	24	37		32	29		23	38	
Sex	Female	22	29	.717	26	25	.722	20	31	.474
	Male	32	50		45	37		38	44	
Smoking	No	28	42	1.000	35	35	.487	26	44	.120
	Yes	26	37		36	27		32	31	
Drinking	No	38	56	1.000	49	45	.705	40	54	.848
	Yes	16	23		22	17		18	21	
Differentiation	Well	7	7	.146	8	6	.696	10	4	.093
	Moderate	34	40		37	37		30	44	
	Poor	13	32		26	19		18	27	
Location	Left	30	34	.163	32	32	.490	25	39	.382
	Right	24	45		39	30		33	36	
T stage	1 + 2	49	69	.591	65	53	.288	55	63	.058
	3 + 4	5	10		6	9		3	12	
Lymph node involvement	Negative	30	36	.292	40	26	.119	31	35	.487
	Positive	24	43		31	36		27	40	
Pathological stage	I + II	34	45	.590	46	33	.216	39	40	.113
	III + IV	20	34		25	29		19	35	
Surgical type	Local resection	6	10	.871	10	6	.581	9	7	.615
	Lobectomy	45	66		57	54		47	64	
	Pneumonectomy	3	3		4	2		2	4	

$\beta$ -arrestin1(C)= $\beta$ -arrestin1 expressed in cytoplasm,  $\beta$ -arrestin1(N)= $\beta$ -arrestin1 expressed in nucleus.

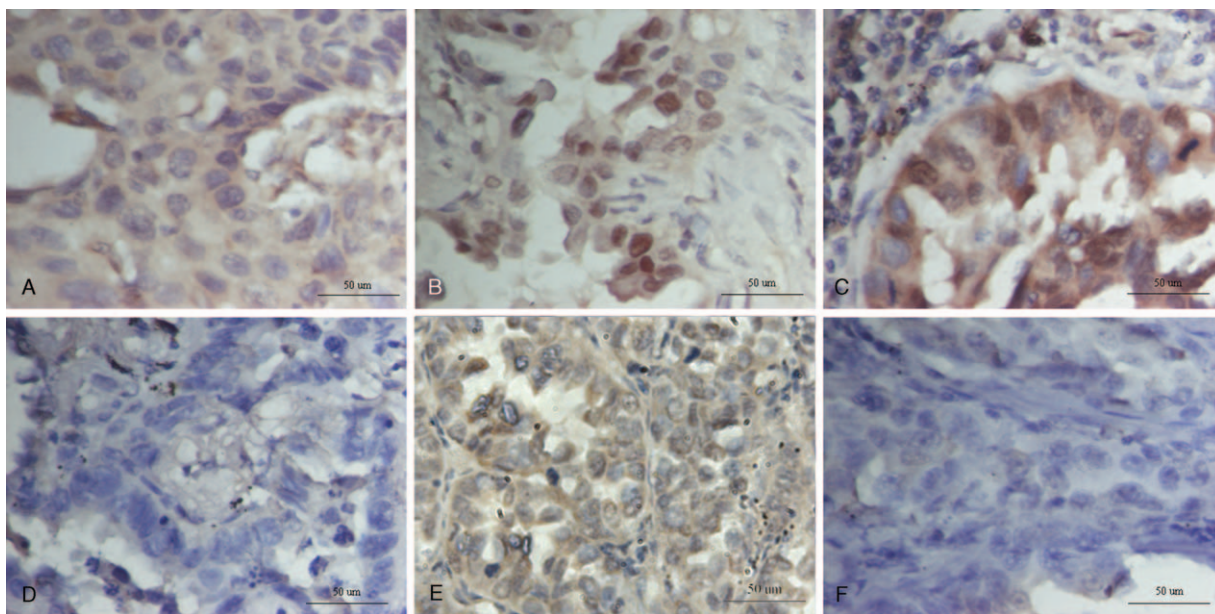
**3.2. Expression of  $\beta$ -arrestin1 and p300 in lung adenocarcinoma primary tumors**

Staining of  $\beta$ -arrestin1 was identified in both the cytoplasm ( $\beta$ -arrestin1(C)) and nucleus ( $\beta$ -arrestin1(N)) of cancer cells, whereas p300 was mostly present in the nucleus (Fig. 1). The expression of  $\beta$ -arrestin1 protein was investigated in 133 cases, of which 79 (59%) showed high cytoplasm immunoreactivity and

62 (47%) showed high nuclear immunoreactivity. Regarding p300, 75 (56%) cases showed high expression and 58 (44%) cases showed low expression.

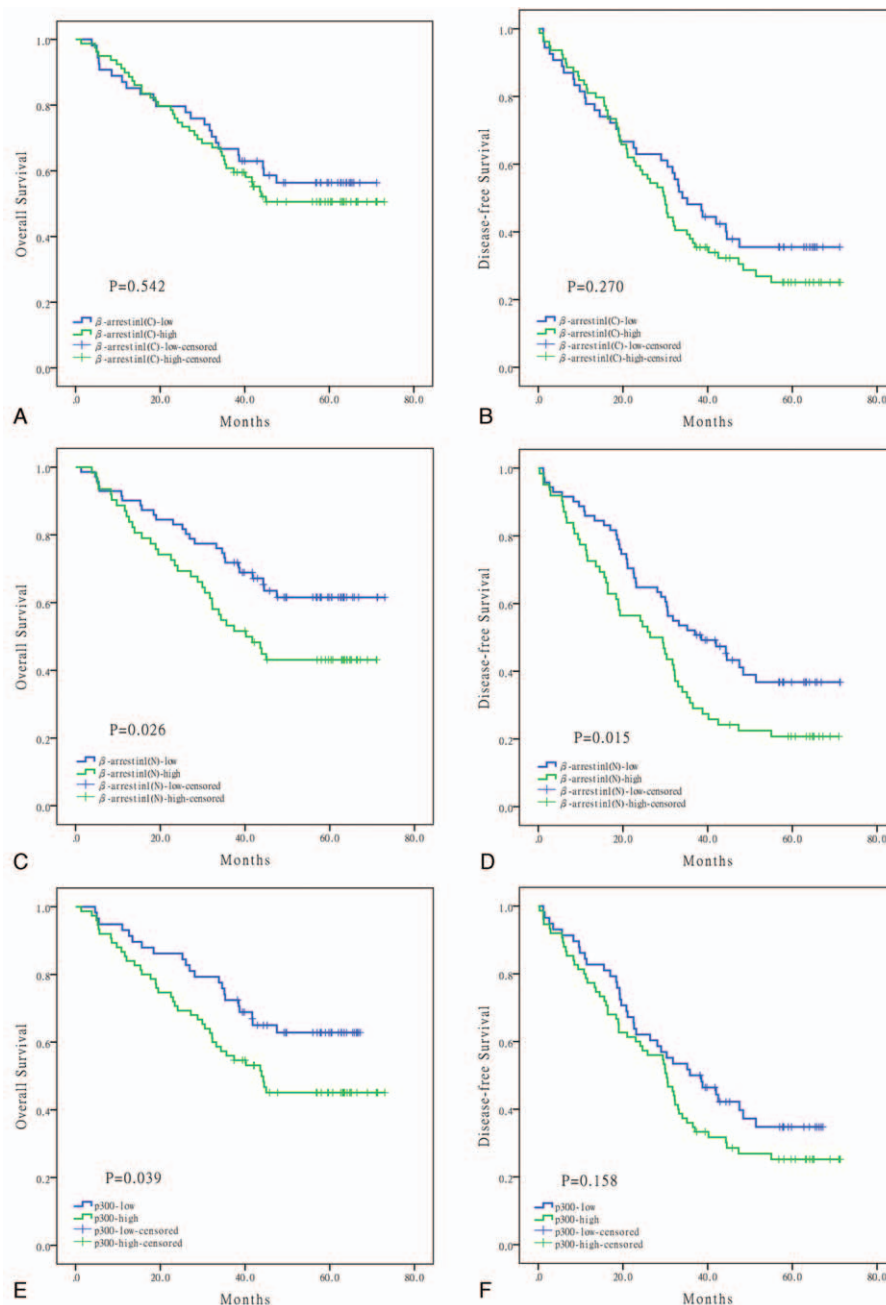
**3.3. Prognostic value of  $\beta$ -arrestin1 and p300**

Figure 2 shows the survival curves of all patients. The Kaplan-Meier plots showed that  $\beta$ -arrestin1(C) had no effect on OS or



**Figure 1.** Immunohistochemical staining of lung adenocarcinoma showing: (A)  $\beta$ -arrestin1 highly expressed in the cytoplasm, (B)  $\beta$ -arrestin1 highly expressed in the nucleus, (C)  $\beta$ -arrestin1 highly expressed in both cytoplasm and nucleus, (D) negative expression of  $\beta$ -arrestin1 in both cytoplasm and nucleus, (E) high expression of p300 and (F) low expression of p300 (400 $\times$  magnification).





**Figure 2.** Kaplan-Meier cumulative survival analysis for lung adenocarcinoma patients with different expression of  $\beta$ -arrestin1 and p300. (A) Expression of cytoplasmic  $\beta$ -arrestin1 in relation to OS, (B) expression of cytoplasmic  $\beta$ -arrestin1 in relation to DFS, (C) expression of nuclear  $\beta$ -arrestin1 in relation to OS, (D) expression of nuclear  $\beta$ -arrestin1 in relation to DFS, (E) p300 expression in relation to OS, and (F) p300 expression in relation to DFS.

DFS ( $P = .542$ ,  $P = .270$ ), whereas, patients with high expression of  $\beta$ -arrestin1(N) had a poorer OS and DFS than those with low expression of  $\beta$ -arrestin1(N) ( $P = .026$ ,  $P = .015$ ). Survival analyses were also performed by comparing the expression of p300 to both OS and DFS. Results demonstrated that high p300 expression had no impact on DFS ( $P = .158$ ), but resulted in a worse OS ( $P = .039$ ). For the multivariate analysis, the Cox proportional hazards model, involving the expression levels of  $\beta$ -arrestin1(C),  $\beta$ -arrestin1(N), p300 proteins, and various clinical parameters, was utilized (Tables 2 and 3). For OS, only the pathological stage was an independent prognostic factor ( $P < .001$ ). For DFS, both T stage and lymph node involvement

were independent prognostic factors ( $P = .001$  and  $P < .001$ , respectively).

### 3.4. Co-expression of $\beta$ -arrestin1(N) and p300

Subsequently, we combined  $\beta$ -arrestin1(N) and p300 expression into 4 groups: both  $\beta$ -arrestin1(N) and p300 had low expression, low  $\beta$ -arrestin1(N) and high p300 expression, high  $\beta$ -arrestin1(N) and low p300 expression, and both  $\beta$ -arrestin1(N) and p300 had high expression. Patients with high expression of both  $\beta$ -arrestin1(N) and p300 had lower 5-year survival rates and shorter median survival times than the others (5-year OS, 38% vs

**Table 2**  
Univariate and multivariate analyses for the overall survival.

Variable	N	Univariate analyses				Multivariable analyses				
		HR	Low CI	High CI	P	HR	Low CI	High CI	P	
Age	≥60 versus <60	61/72	0.81	0.49	1.34	.406				
Sex	Male versus female	82/51	1.04	0.62	1.73	.895				
Smoking	Yes versus no	63/70	1.00	0.60	1.66	.998				
Drinking	Yes versus no	39/94	0.60	0.32	1.10	.099				
Differentiation	Poor versus well/moderate	45/88	1.47	0.88	2.46	.139				
Location	Right versus left	69/64	0.83	0.50	1.38	.471				
T stage	3/4 versus 1/2	15/118	3.04	1.61	5.72	.001*				
Lymph node involvement	Positive versus negative	67/66	2.73	1.58	4.70	<.001*				
Pathological stage	III/IV I/II	54/79	3.16	1.89	5.30	<.001*	2.97	1.76	5.00	<.001*
β-arrestin1(C)	High/low	79/64	1.17	0.70	1.97	.542				
β-arrestin1(N)	High/low	62/71	1.76	1.06	2.93	.028*				
P300	High/low	75/58	1.73	1.02	2.94	.042*				
Surgical type	Lobectomy/pneumonectomy versus local resection	117/16	0.58	0.29	1.14	.112				
Co-expression	Both low	46	1.00			.038*	1.00			.110
	β-arrestin1(N)-low and P300-high	25	1.02	0.46	2.29	.962	0.95	0.42	2.12	.893
	β-arrestin1(N)-high and P300-low	12	0.86	0.29	2.54	.778	0.84	0.28	2.49	.751
	Both high	50	2.07	1.14	3.74	.016*	1.80	0.99	3.27	.053

β-arrestin1(C)=β-arrestin1 expressed in cytoplasm, β-arrestin1(N)=β-arrestin1 expressed in nucleus.  
\*Statistically significant data.

61%; 5-year DFS, 18% vs 36%; median survival times for OS, 34.5 vs 73 months; median survival times for DFS, 24.75 vs 38.48 months).

Notably, Kaplan-Meier plots showed the poorest OS or DFS for the group with high expression of both β-arrestin1(N) and p300 (P=.032, P=.044, respectively; Fig. 3). Interestingly, the survival curves of patients in the low β-arrestin1(N) and high p300 expression group, or of those with high β-arrestin1(N) and low p300 expression, were relatively close to that of patients with tumors exhibiting low expression of both β-arrestin1(N) and p300, but were dramatically discrepant from that of patients with high expression of both β-arrestin1(N) and p300 (Fig. 3). In the univariate Cox proportional hazards regression analysis, these variables also showed insignificant differences in outcomes concerning both OS and DFS. The

multivariate analysis of clinical and pathologic characteristics is summarized in Table 3.

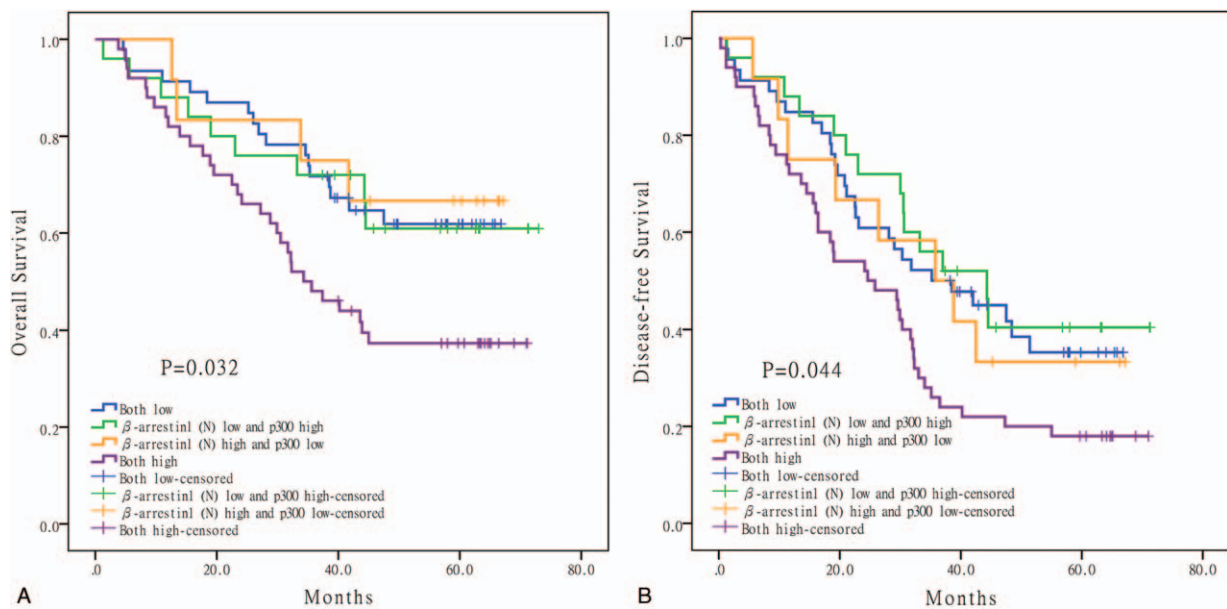
#### 4. Discussion

Over the last few decades, the effects and mechanisms of β-arrestin1 on tumorigenesis and progression of malignant tumor has been drawing increasing attention. Elevated expression of β-arrestin1 was described in previous studies of multiple tumor types, including breast cancer, acute lymphoblastic leukemia, and prostate cancer.<sup>[12,13,25]</sup> In past studies, high expression of β-arrestin1 was associated with unfavorable clinicopathological parameters, such as histological grade, tumor size, lymph node metastases, distant metastases, and so on.<sup>[26,27]</sup> In the present study, we found that neither β-arrestin1(C) nor

**Table 3**  
Univariate and multivariate analyses for the disease-free survival.

Variable	N	Univariate analyses				Multivariable analysis				
		HR	Low CI	High CI	P	HR	Low CI	High CI	P	
Age	≥60 versus <60	61/72	0.74	0.49	1.13	.163				
Sex	Male versus female	82/51	0.96	0.63	1.46	.844				
Smoking	Yes versus no	63/70	0.99	0.66	1.50	.965				
Drinking	Yes versus No	39/94	0.73	0.45	1.17	.189				
Differentiation	Poor versus well/moderate	69/64	2.02	1.33	3.08	.001*				
Location	Right versus left	75/58	0.88	0.58	1.33	.546				
T stage	3/4 versus 1/2	45/88	3.23	1.83	5.70	<.001*	2.65	1.48	4.74	.001*
Lymph node involvement	Positive versus negative	15/118	3.07	1.98	4.77	<.001*	3.00	1.91	4.70	<.001*
Pathological stage	III/IV I/II	67/66	3.04	1.99	4.63	<.001*				
β-arrestin1(C)	High/low	54/79	1.27	0.83	1.94	.272				
β-arrestin1(N)	High/low	79/64	1.66	1.10	2.51	.016*	1.61	0.99	2.62	.056
P300	High/low	62/71	1.35	0.89	2.06	.160				
Surgical type	Lobectomy/pneumonectomy versus local resection	117/16	0.70	0.38	1.28	.245				
Co-expression	Both low	46	1.00			.050	1.00			.061
	β-arrestin1(N)-low and P300-high	25	0.86	0.45	1.63	.644	0.79	0.41	1.51	.474
	β-arrestin1(N)-high and P300-low	12	1.08	0.49	2.37	.848	0.90	0.40	1.98	.785
	Both high	50	1.73	1.07	2.81	.025*	1.61	0.99	2.62	.056

β-arrestin1(C)=β-arrestin1 expressed in cytoplasm, β-arrestin1(N)=β-arrestin1 expressed in nucleus.  
\*Statistically significant data.



**Figure 3.** Kaplan-Meier cumulative survival analysis for lung adenocarcinoma patients regarding the co-expression of nuclear  $\beta$ -arrestin1 and p300. (A) OS and (B) DFS.

$\beta$ -arrestin1(N) had a correlation with age, sex, smoking status, drinking status, grade of differentiation, tumor location, T stage, lymph node involvement, pathological stage, or the type of surgical procedure.

Several studies have investigated the effect of  $\beta$ -arrestin1 on patient outcomes, generating conflicting results. For example, Michal et al found that decreased  $\beta$ -arrestin1 was associated with poor clinical outcome in breast cancer,<sup>[28]</sup> while Lundgren et al showed that high expression of  $\beta$ -arrestin1 markedly increased the risk of recurrence.<sup>[26]</sup> In addition, Wang et al documented that  $\beta$ -arrestin1 had no relationship with the prognosis of gastric cardia adenocarcinoma.<sup>[27]</sup> Santulli proposed that, in the adrenal medulla,  $\beta$ -arrestin1 and G-protein-coupled receptor kinases 2 (GRK2) finely regulated the secretion of catecholamines. But in the heart,  $\beta$ -arrestin1 and GRK2 inhibited  $\beta$ -adrenergic receptor ( $\beta$ AR)-mediated inotropic effects, which was detrimental to cardiac function.<sup>[29]</sup> For non-small cell lung cancer (NSCLC), our previous results were also conflicting. Ma et al found that loss of  $\beta$ -arrestin1 expression predicted unfavorable prognosis for NSCLC patients.<sup>[4]</sup> In contrast, Qiu et al observed that  $\beta$ -arrestin1 over-expression was associated with an unfavorable prognosis in lung adenocarcinoma.<sup>[3,5]</sup> So why do we come to opposite conclusions?

Initially,  $\beta$ -arrestin1 was appreciated for acting as a negative regulator of GPCR signaling, through the processes of receptor desensitization and internalization. Different receptors have varied functions in different situations. In the cytoplasm,  $\beta$ -arrestin1 also takes part in cell signaling pathways, including Src, MAPKs, small GTPases, components of the PI3K/AKT signaling cascade, transcription factors, cytoskeletal proteins, etc, by serving as a multifunctional scaffold, downstream of different classes of receptors or even via a receptor-independent mechanisms.<sup>[30]</sup>  $\beta$ -arrestin1 can play both positive and negative regulatory roles in this signaling axis, depending on upstream inputs and biological contexts. For instance, the  $\beta$ -arrestin1-mediated activation of PI3K results in phosphorylation of AKT, leading to cell growth, survival, and proliferation.<sup>[31]</sup> However,

$\beta$ -arrestin1 has also been shown to scaffold the pleckstrin homology domain leucine-rich repeat protein phosphatase 2, with AKT and inactivated AKT.<sup>[32]</sup> Furthermore,  $\beta$ -arrestin1 can increase PTEN activity and thus inhibit AKT activation.<sup>[33]</sup>

Although cytoplasmic signaling by  $\beta$ -arrestins has been extensively described, their nuclear signaling has not received attention until very recently. Since Kang et al (2005) provided evidence that  $\beta$ -arrestin1 moved to the nucleus in response to GPCR stimulation, where it regulated gene expression by facilitating histone acetylation at specific gene promoters, nuclear function of  $\beta$ -arrestin1 has become a hot topic for increasingly more researchers.<sup>[9]</sup> Dasgupta et al found that nicotine induced the binding of  $\beta$ -arrestin1, p300, and Ac-H3 on E2F-regulated genes, then increased the expression of proliferative and survival genes, thereby contributing to the growth and progression of NSCLC.<sup>[11]</sup> High levels of nuclear  $\beta$ -arrestin1 were also observed in metastatic NSCLC. Shenoy et al later demonstrated that  $\beta$ -arrestin1 in breast cancer robustly interacted with nuclear hypoxia-induced factor 1 $\alpha$  that was stabilized during hypoxia, and potentiated HIF-1-dependent transcription of the angiogenic factor VEGF-A.<sup>[12]</sup> Additionally, Rosano et al also documented that  $\beta$ -arrestin1- $\beta$ -catenin interactions controlled the expression of  $\beta$ -catenin target genes, by promoting the recruitment of p300 acetyltransferase on these promoter genes, resulting in gene transcription, which were required for cell migration, invasion, and epithelial-to-mesenchymal transition.<sup>[10]</sup> Recently, another study confirmed that nuclear  $\beta$ -arrestin1 interacted with p300, contributing to the metabolic shift in prostate cancer cells via regulation of HIF1 $\alpha$  transcriptional activity, under normoxic conditions.<sup>[13]</sup> The aforementioned findings indicate that nuclear  $\beta$ -arrestin1 can promote the expression of tumor-related genes, and that this function is largely performed by p300 acetyltransferase, which enhances the activity of non-histone transcription factors and raises the level of histone acetylation.

In view of the different roles of  $\beta$ -arrestin1 in the cytoplasm and nucleus, we investigated the expression of cytosolic and nuclear  $\beta$ -arrestin1, respectively. Our previous results showed

that the expression of  $\beta$ -arrestin1 was either lost or low in squamous cell lung cancer, whereas the lack of  $\beta$ -arrestin1 expression was rare in adenocarcinoma. To eliminate the effect of tumor type, in this study, expression of  $\beta$ -arrestin1 was investigated in 133 cases of lung adenocarcinoma, of which 59% showed high cytoplasm immunoreactivity and 47% showed high nuclear immunoreactivity. Obtained results showed that  $\beta$ -arrestin1(C) had no effect on OS and DFS, whereas patients showing high expression of  $\beta$ -arrestin1(N) had a poorer OS and shorter DFS than patients with low expression of  $\beta$ -arrestin1(N).

p300, a member of the histone acetyltransferase family of transcriptional co-activators, was found to participate in a broad spectrum of cellular processes, such as DNA repair, cell growth, differentiation, apoptosis, and migration.<sup>[134]</sup> The role of p300 in cancer has long been described. In our present research, p300 expression in lung adenocarcinoma was not associated with clinicopathological characteristics, such as age, sex, smoking status, drinking status, grade of differentiation, tumor location, T stage, N categories, pathological stage, or type of surgical procedure, which was consistent with results presented in a previous study on NSCLC.<sup>[15]</sup> Numerous studies have demonstrated that p300 overexpression is indicative of poor prognosis in most human malignancies.<sup>[14-21]</sup> Our study also found that p300 was linked to poor OS in lung adenocarcinoma. However, in the multivariate analysis, individual expression level of p300 was no longer an independent predictor.

Given that  $\beta$ -arrestin1 acts synergistically with p300 in the nucleus by forming a complex, the detection of the co-expression of these 2 factors may have more clinical and prognostic significance than the detection of individual expression. Therefore, we combined  $\beta$ -arrestin1(N) and p300 expression into 4 groups: low expression of both  $\beta$ -arrestin1(N) and p300, low  $\beta$ -arrestin1(N) and high p300 expression, high  $\beta$ -arrestin1(N) and low p300 expression, and high expression of both  $\beta$ -arrestin1(N) and p300. Results showed that patients with high expression of both  $\beta$ -arrestin1(N) and p300 had lower 5-year survival rates and shorter median survival times than the others. Our results could be used as a working model to define a role for  $\beta$ -arrestin1 and p300. However, in the survival analysis, the combination of these 2 factors was not an independent predictor, which should be further investigated.

Taken together, our findings provide a new diagnostic tool for predicting patient outcomes. For lung adenocarcinoma patients, a high expression of both  $\beta$ -arrestin1(N) and p300 is indicative of poor prognosis. Detecting  $\beta$ -arrestin1 in the nucleus, together with p300, can help in identifying patients with increased risk of cancer recurrence. Moreover, these observations and our findings suggest that detecting  $\beta$ -arrestin1(N) and p300 expression could help establish individual treatments for cancer patients.  $\beta$ -arrestin1 and p300 not only play important roles in cellular growth and migration, but also serve as key prognostic factors for lung adenocarcinoma. Based on this semiquantitative study, we consider that more quantitative measures of expression need to be implemented. In addition, the influence of  $\beta$ -arrestin1 and p300 expression levels on the prognosis of lung adenocarcinoma patients deserves further study.

Moreover, there are some limitations to our study. First, selection bias may be present due to the retrospective nature of this study. Second, this is a single-center study, with a limited sample size. More data from other institutions are essential to validate our results. Third, this research is based on semiquantitative measures of expression, which have limitations. More quantitative measures of expression are needed to properly

investigate this phenomenon. Our results can only indirectly reflect the prognostic value of the  $\beta$ -arrestin1(N)-p300 complex, because of methodological limitations. Lastly, specific genetic alterations of lung adenocarcinoma show characteristic histology. It would be useful to detect major genetic driver mutations and their respective histological characteristics. We will certainly consider this for future work.

In conclusion, our data suggest that  $\beta$ -arrestin1 and p300 are potentially involved in the progression and prognosis of lung adenocarcinoma. The predictive value of nuclear  $\beta$ -arrestin1 may be optimized by combining information about the expression of p300 acetyltransferase, and co-expression of  $\beta$ -arrestin1(N) and p300 should be considered as a new molecular biomarker for the diagnosis and prognosis of lung adenocarcinoma.

## References

- [1] Siegel R, Naishadham D, Jemal A. Cancer statistics, 2013. *CA Cancer J Clin* 2013;63:11-30.
- [2] DeWire SM, Ahn S, Lefkowitz RJ, et al. Beta-arrestins and cell signaling. *Annu Rev Physiol* 2007;69:483-510.
- [3] Qiu C, Zheng C, Zhu L, et al.  $\beta$ -arrestin1 over-expression is associated with an unfavorable prognosis in lung adenocarcinomas and correlated with vascular endothelial growth factor. *Int J Clin Exp Pathol* 2015;8:3785-93.
- [4] Ma H, Wang L, Zhang T, et al. Loss of beta-arrestin1 expression predicts unfavorable prognosis for non-small cell lung cancer patients. *Tumour Biol* 2016;37:1341-7.
- [5] Yu J, Wang L, Zhang T, et al. Co-expression of beta-arrestin1 and NF-kappaB is associated with cancer progression and poor prognosis in lung adenocarcinoma. *Tumour Biol* 2015;36:6551-8.
- [6] Scott MG, Le Rouzic E, Perianin A, et al. Differential nucleocytoplasmic shuttling of beta-arrestins. Characterization of a leucine-rich nuclear export signal in beta-arrestin2. *J Biol Chem* 2002;277:37693-701.
- [7] Hoepfner CZ, Cheng N, Ye RD. Identification of a nuclear localization sequence in beta-arrestin-1 and its functional implications. *J Biol Chem* 2012;287:8932-43.
- [8] Wang P, Wu Y, Ge X, et al. Subcellular localization of beta-arrestins is determined by their intact N domain and the nuclear export signal at the C terminus. *J Biol Chem* 2003;278:11648-53.
- [9] Kang J, Shi Y, Xiang B, et al. A nuclear function of beta-arrestin1 in GPCR signaling: regulation of histone acetylation and gene transcription. *Cell* 2005;123:833-47.
- [10] Rosanò L, Cianfrocca R, Tocci P, et al. beta-arrestin-1 is a nuclear transcriptional regulator of endothelin-1-induced beta-catenin signaling. *Oncogene* 2013;32:5066-77.
- [11] Dasgupta P, Rizwani W, Pillai S, et al. ARRB1-mediated regulation of E2F target genes in nicotine-induced growth of lung tumors. *J Natl Cancer Inst* 2011;103:317-33.
- [12] Shenoy SK, Han S, Zhao YL, et al. beta-arrestin1 mediates metastatic growth of breast cancer cells by facilitating HIF-1-dependent VEGF expression. *Oncogene* 2012;31:282-92.
- [13] Zecchini V, Madhu B, Russell R, et al. Nuclear ARRB1 induces pseudohypoxia and cellular metabolism reprogramming in prostate cancer. *EMBO J* 2014;33:1365-82.
- [14] Gao Y, Geng J, Hong X, et al. Expression of p300 and CBP is associated with poor prognosis in small cell lung cancer. *Int J Clin Exp Pathol* 2014;7:760-7.
- [15] Hou X, Li Y, Luo RZ, et al. High expression of the transcriptional co-activator p300 predicts poor survival in resectable non-small cell lung cancers. *Eur J Surg Oncol* 2012;38:523-30.
- [16] Xiao XS, Cai MY, Chen JW, et al. High expression of p300 in human breast cancer correlates with tumor recurrence and predicts adverse prognosis. *Chin J Cancer Res [Chung-kuo Yen Cheng Yen Chiu]* 2011;23:201-7.
- [17] Li M, Luo RZ, Chen JW, et al. High expression of transcriptional coactivator p300 correlates with aggressive features and poor prognosis of hepatocellular carcinoma. *J Transl Med* 2011;9:5.
- [18] Huh JW, Kim HC, Kim SH, et al. Prognostic impact of p300 expression in patients with colorectal cancer. *J Surg Oncol* 2013;108:374-7.
- [19] Isharwal S, Miller MC, Marlow C, et al. p300 (histone acetyltransferase) biomarker predicts prostate cancer biochemical recurrence and

- correlates with changes in epithelia nuclear size and shape. *Prostate* 2008;68:1097–104.
- [20] Liao ZW, Zhou TC, Tan XJ, et al. High expression of p300 is linked to aggressive features and poor prognosis of nasopharyngeal carcinoma. *J Transl Med* 2012;10:110.
- [21] Chen YF, Luo RZ, Li Y, et al. High expression levels of COX-2 and P300 are associated with unfavorable survival in laryngeal squamous cell carcinoma. *Eur Arch Otorhinolaryngol* 2013;270:1009–17.
- [22] Edge SB, Compton CC. The American Joint Committee on Cancer: the 7th edition of the AJCC cancer staging manual and the future of TNM. *Ann Surg Oncol* 2010;17:1471–4.
- [23] Brambilla E, Travis WD, Colby TV, et al. The new World Health Organization classification of lung tumours. *Eur Respir J* 2001;18:1059–68.
- [24] Altman DG, McShane LM, Sauerbrei W, et al. Reporting Recommendations for Tumor Marker Prognostic Studies (REMARK): explanation and elaboration. *PLoS Med* 2012;9:e1001216.
- [25] Liu H, Long J, Zhang PH, et al. Elevated beta-arrestin1 expression correlated with risk stratification in acute lymphoblastic leukemia. *Int J Hematol* 2011;93:494–501.
- [26] Lundgren K, Tobin NP, Lehn S, et al. Stromal expression of beta-arrestin-1 predicts clinical outcome and tamoxifen response in breast cancer. *J Mol Diagn* 2011;13:340–51.
- [27] Wang LG, Su BH, Du JJ. Expression of beta-arrestin 1 in gastric cardiac adenocarcinoma and its relation with progression. *Asian Pac J Cancer Prev* 2012;13:5671–5.
- [28] Michal AM, Peck AR, Tran TH, et al. Differential expression of arrestins is a predictor of breast cancer progression and survival. *Breast Cancer Res Treat* 2011;130:791–807.
- [29] Santulli G. Adrenal signaling in heart failure something more than a distant ship's smoke on the horizon. *Hypertension* 2014;63:215–6.
- [30] Xiao K, McClatchy DB, Shukla AK, et al. Functional specialization of beta-arrestin interactions revealed by proteomic analysis. *Proc Natl Acad Sci U S A* 2007;104:12011–6.
- [31] Povsic TJ, Kohout TA, Lefkowitz RJ. Beta-arrestin1 mediates insulin-like growth factor 1 (IGF-1) activation of phosphatidylinositol 3-kinase (PI3K) and anti-apoptosis. *J Biol Chem* 2003;278:51334–9.
- [32] Crotty TM, Nakano T, Stafforini DM, et al. Diacylglycerol kinase delta modulates Akt phosphorylation through pleckstrin homology domain leucine-rich repeat protein phosphatase 2 (PHLPP2). *J Biol Chem* 2013;288:1439–47.
- [33] Lima-Fernandes E, Enslin H, Camand E, et al. Distinct functional outputs of PTEN signalling are controlled by dynamic association with beta-arrestins. *EMBO J* 2011;30:2557–68.
- [34] Karamouzis MV, Konstantinopoulos PA, Papavassiliou AG. Roles of CREB-binding protein (CBP)/p300 in respiratory epithelium tumorigenesis. *Cell Res* 2007;17:324–32.