

Keywords: hepatocellular cancer; TACE; TAE; embolisation; RECIST

A randomised phase II/III trial of 3-weekly cisplatin-based sequential transarterial chemoembolisation vs embolisation alone for hepatocellular carcinoma

T Meyer^{*,1,2}, A Kirkwood³, M Roughton³, S Beare³, E Tsochatzis⁴, D Yu⁵, N Davies⁵, E Williams³, S P Pereira⁶, D Hochhauser², A Mayer¹, R Gillmore¹, J O'Beirne⁴, D Patch⁴ and A K Burroughs⁴

¹Department of Oncology, UCL Medical School, Royal Free Campus, London NW3 2QG, UK; ²UCL Cancer Institute, 72 Huntley Street, London WC1E 6BT, UK; ³Cancer Research UK & UCL Cancer Trials Centre, London W1T 4TJ, UK; ⁴The Royal Free Sheila Sherlock Liver Centre and University Department of Surgery and Interventional Science, Royal Free London NHS Foundation Trust, London NW3 2QG, UK; ⁵Department of Radiology, Royal Free London NHS Foundation Trust, London, UK and ⁶Department of Gastroenterology, University College Hospital, London NW1 2BU, UK

Background: Transarterial chemoembolisation (TACE) has not been shown to be superior to bland embolisation (TAE) for treatment of hepatocellular carcinoma (HCC).

Methods: We conducted a randomised phase II/III trial in patients with untreated HCC. Patients were randomised to TAE with polyvinyl alcohol (PVA) particles alone or sequential TACE (sTACE) in which cisplatin 50 mg was administered intrarterially 4–6 h before PVA embolisation. Treatment was repeated 3-weekly for up to three treatments. The primary endpoint was overall survival and secondary endpoints were progression-free survival, toxicity and response. Target sample sizes for phase II and III were 80 and 322.

Results: The trial was terminated at phase II after 86 patients had been randomised. Patients were well matched for prognostic criteria. All three planned treatments were given to 57.1% (TAE) and 56.8% (TACE) patients. Grade 3/4 toxicity occurred in 63.5% and 83.7%, respectively ($P=0.019$). End-of-treatment RECIST response (CR + PR) was 13.2 and 32.6% ($P=0.04$) (mRECIST 47.3% and 67.4) and median overall survival and progression-free survival was 17.3 vs 16.3 ($P=0.74$) months and 7.2 vs 7.5 ($P=0.59$), respectively.

Conclusion: Transarterial chemoembolisation according this novel schedule is feasible and associated with a higher response rate than TAE alone. The survival benefit of TACE over TAE remains unproven.

Hepatocellular carcinoma (HCC) is the sixth most common type of cancer worldwide and the third most common cause of death from cancer, resulting in around 600 000 deaths annually (Parkin *et al*, 2005). The major risk factors are infection with hepatitis B and C virus, which increase the risk of liver cancer 20-fold. Liver cirrhosis is present in 80% of cases and both prognosis and treatment are determined by liver function as well as

tumour-related factors and performance status (Okuda *et al*, 1985; CLIP Investigators, 1998; Llovet *et al*, 1999). Overall the prognosis is extremely poor with incidence closely matching mortality. Potentially curative options including transplantation, resection or ablation are applicable to less than 30% of patients who meet defined criteria and the majority of patients are therefore treated with palliative intent.

*Correspondence: Dr T Meyer; E-mail: t.meyer@ucl.ac.uk

Received 17 December 2012; revised 26 January 2013; accepted 1 February 2013; published online 28 February 2013

© 2013 Cancer Research UK. All rights reserved 0007–0920/13

Transarterial embolisation (TAE) and chemoembolisation (TACE) have been widely used to treat HCC and exploit the dual blood supply to the liver in which the liver parenchyma receives most of its blood supply from the portal vein, while the tumour is supplied predominantly by the hepatic artery. This allows selective cannulation of vessels supplying the tumour and occlusion by embolic particles leading to tumour hypoxia and necrosis. The procedure can be performed with the co-administration of arterial chemotherapy (transarterial chemoembolisation, TACE), but there is considerable heterogeneity in the technique in relation to the type of embolic particle, the chemotherapy drugs used and the schedule of administration (Marelli *et al*, 2007). Evidence that TACE improves survival comes from two small randomised trials in which gelfoam embolisation was performed with either doxorubicin (Llovet *et al*, 2002) or cisplatin (Lo *et al*, 2002) and found to be superior to best supportive care. These trials were included in a subsequent meta-analysis of seven trials including 545 patients, which concluded that TACE, but not TAE, was associated with a significant 2-year survival benefit over best supportive care (Llovet and Bruix, 2003). Since the publication of this meta-analysis two further trials have been reported and an updated meta-analysis performed by the Cochrane Collaboration which included nine trials and 645 participants (Oliveri *et al*, 2011). It was observed that the individual trials were underpowered, at risk of bias and that there was heterogeneity between the trials. Overall, the authors concluded neither TAE nor TACE improved survival compared with best supportive care. The discrepancy between these two reviews is attributable to application of different criteria for trial inclusion and the validity of the Cochrane review has been questioned on this basis (Ray, Jr *et al*, 2011; Forner *et al*, 2012).

The contribution of chemotherapy to the effectiveness of TACE has also been questioned given that HCC is relatively chemoresistant (Burroughs *et al*, 2004; Asghar and Meyer, 2012), and there is currently no definite evidence that TACE is superior to TAE (Marelli *et al*, 2007). However, the conventional method of delivering TACE may not be optimal in terms of achieving maximum cytotoxic effect from chemotherapy. First, TACE is usually performed at intervals of several months rather than according to more frequent oncological schedules designed to prevent tumour repopulation. Second, the co-administration of chemotherapy with particles may compromise the delivery of drug to the tumour, and the resulting tumour hypoxia is known to be an important cause of chemoresistance (Tak *et al*, 2011; Asghar and Meyer, 2012).

Given these considerations and the uncertain benefit of TACE over TAE, we designed a randomised trial in which the delivery of chemotherapy was optimised to maximise its potential benefit. We selected cisplatin, as this drug is well tolerated in liver impairment and was effective in a previously reported randomised trial (Lo *et al*, 2002). Cisplatin induces DNA damage by inducing intra- and interstrand crosslinks which in turn lead to apoptosis or cell cycle arrest and DNA repair. For our study, cisplatin was administered 4–6 h before embolisation allowing DNA damage to occur before acute hypoxia. We have termed this procedure sTACE (sequential TACE) to distinguish it from other types of TACE such as; (a) lipiodol-based TACE, which has been termed 'conventional' TACE (cTACE) in which TAE is performed immediately following administration of a lipiodol/cytotoxic suspension, (b) drug-eluting bead (DEB)-TACE in which chemotherapy is conjugated directly to DEBs. To reduce the opportunity for tumour repopulation, a 3-weekly treatment schedule was mandated.

METHODS

Trial Design. This phase II/III trial was designed to compare TAE with sTACE in patients with non-resectable HCC. Patients were

randomised to one of the two treatment arms in a 1:1 ratio. Randomisation was carried out by the coordinating centre using a paper list, and was stratified by recruiting site. The purpose of the phase II aspect of the trial was to examine the safety, tolerability and feasibility of delivering the treatments.

This trial was ethically approved by the institutional review board and registered on an appropriate clinical trial databases (ISRCTN63349435). The trial was coordinated centrally by the Cancer Research UK and University College London Cancer Trials Centre (UCL CTC). Ongoing safety and efficacy were independently assessed by an Independent Data Monitoring Committee. The design, conduct and reporting of this trial adheres to the CONSORT 2010 Statement (Schulz *et al*, 2010).

Patients. Patients were eligible if they were ≥ 16 years old and had HCC diagnosed according to the EASL criteria (Bruix *et al*, 2001); (1) histology or (2) evidence of a focal lesion > 2 cm with arterial hypervascularisation detected on two radiological studies (any two of ultrasound, computed tomography (CT), magnetic resonance imaging or angiography) in a patient with a background of cirrhosis; or (3) a single radiological study with an α -fetoprotein greater than 400 ng ml^{-1} . Patients were not eligible if they were candidates for surgical resection. The extent of disease was required to be either a solitary hepatic tumour > 3 cm in diameter or multifocal. Other eligibility criteria included ECOG performance status (PS) 0–2, platelets $\geq 50 \times 10^9$ per litre, $\text{INR} \leq 1.5$, $\text{GFR} \geq 50 \text{ ml min}^{-1}$, bilirubin $\leq 100 \mu\text{mol l}^{-1}$. Patients were not eligible if they had received prior treatment for HCC, if there was evidence of extra-hepatic metastases, or if they had a Child Pugh score of C. Patients were also excluded if they had active sepsis or bleeding, hepatic encephalopathy, ascites refractory to diuretic therapy, or documented occlusion of the hepatic artery or portal vein. Pregnant or lactating women were not eligible for the trial.

Procedures. Patients received either TAE or sTACE. Treatment with TAE consisted of selective angiography followed by embolisation with 50–150 μm polyvinyl alcohol (PVA) particles at segmental or lobar level. Bilobar lesions were treated separately if they could not be treated by highly selective (segmental or sub segmental) embolisation. Prophylactic antibiotics were administered to reduce the risk of infection. For sTACE, cisplatin (50 mg in 50 ml) was administered intra-arterially as an injection over 15 min. The cisplatin injection was preceded by intravenous (i.v.) hydration and anti-emetics and followed by more i.v. hydration. TAE was performed as described above 4–6 h after cisplatin administration. Treatment was repeated up to three times at 3-weekly intervals. Patients were withdrawn from further trial treatment if treatment was delayed by more than 3 weeks due to haematological toxicity or if they experienced any grade IV non-haematological toxicity. After the final treatment, patients were assessed at 1 month and then 3 monthly, thereafter. Further TAE procedures were undertaken at the investigator's discretion if the tumour demonstrated residual vascularity but sorafenib was not offered on progression because approval and funding only became available after the completion of the trial.

Adverse events (AEs) were assessed before each treatment, at completion of treatment and at all follow-up visits and graded according to the NCI Common Terminology Criteria for Adverse Events (CTCAE) version 3.0. Patients were invited to complete quality of life (QoL) questionnaires (EORTC QLQ-C30 and EORTC QLQ-HCC 18). QoL questionnaires were completed before start of treatment, at completion of treatment and 3 and 6 months after completion of treatment.

Before commencing treatment, patients were staged by means of a triphasic spiral CT scan of the chest and abdomen or a CT scan of the thorax and magnetic resonance imaging (MRI) of the abdomen. Repeat scanning was carried out at completion of treatment and 3 monthly thereafter until progression. Response

was assessed according to RECIST 1.0 (Therasse *et al*, 2000) criteria and mRECIST (Lencioni and Llovet, 2010; Gillmore *et al*, 2011). Patients who initially responded were offered a further course of treatment upon progression, provided they met the treatment criteria listed above. Patients who received a liver transplant were followed-up according to the local transplant protocol.

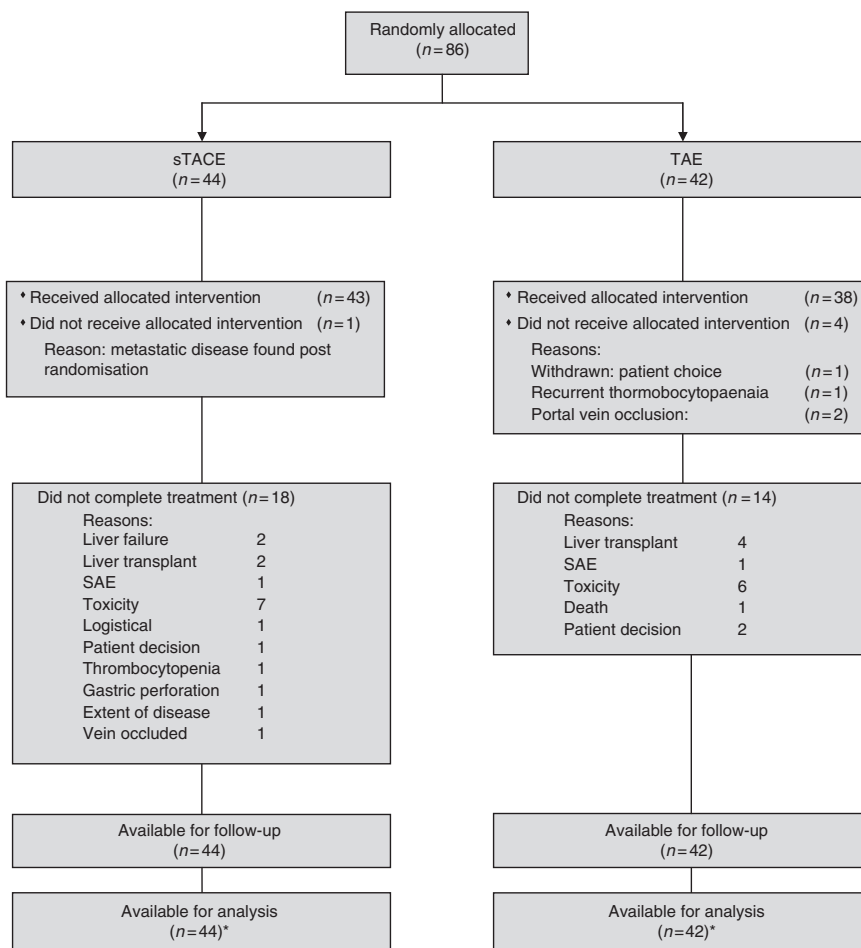
Statistics. The recruitment target for the phase II trial was 80 patients (40 in each arm) with the aim of assessing safety, tolerability and the feasibility of delivering the treatments. We considered that an underlying grade 4 toxicity rate of greater than 30% would be unacceptable. Therefore, if 19 patients in either arm suffered any toxicity of grade 4 (except pain), the trial was to be stopped. Patients who were recruited into TACE, and then subsequently received a liver transplant, were replaced by recruiting additional patients to be able to fully evaluate treatment safety. In April 2009, the independent data monitoring committee (IDMC) were asked to advise on increasing the phase II recruitment target to compensate for patients who underwent liver transplants. The IDMC agreed that this was reasonable and the sample size for the phase II trial was increased to obtain 80 evaluable patients.

The phase III part of the trial was designed to detect a difference in 2-year survival from 50 to 63% with 80% power and a 5% level of statistical significance. For this, 322 patients would have been recruited over 4 years with follow-up of at least 1 year. In February 2010, the IDMC recommended terminating the trial because the

recruitment rate was not compatible with a timely completion of the phase III trial.

Comparison of survival between the two treatment groups was made using the log-rank test and Cox regression was used to estimate the hazard ratio. We also ran models that included the site, the stratification factor used in the randomisation. The following planned subgroup analyses were carried out; Child Pugh, Okuda, Barcelona-Clínica Liver Cancer (BCLC), Cancer of the Liver Italian Program (CLIP) and French staging classifications (10). Quality of life scores were analysed by comparing changes from baseline scores between the two treatment groups.

We performed an update to our published meta-analysis comparing TAE vs TACE (Marelli *et al*, 2007) using as primary outcome the number of patients reported as dead during follow-up. The meta-analysis was conducted according to the PRISMA recommendations (Moher *et al*, 2009). Studies were identified by searching Medline and Embase using the following keywords: 'hepatocellular carcinoma' or 'HCC' or 'hepatic tumour' or 'liver tumour' or 'hepatic cancer' or 'liver cancer' and 'TACE' or 'TAE' or 'chemoembolisation' or 'embolisation' and 'clinical trials'. The analyses were performed using RevMan version 5.1 (Nordic Cochrane Centre, Copenhagen, Denmark). Meta-analyses were performed using random effects models due to expected clinical heterogeneity. The number of events and number of patients in each intervention arm were used to calculate relative risks (RR) and 95% confidence intervals (CI). I^2 values were calculated as measures of the degree of intertrial heterogeneity. Data on all patients randomised were extracted to allow intention-to-treat analyses.



*All patients including those who were ineligible were included in the main intention to treat analysis.

Figure 1. Consort diagram.

RESULTS

Patients and treatment. A total of 86 patients were recruited from two sites; the Royal Free Hospital and University College London Hospital, between December 2003 and November 2009. Patients were randomised to TAE ($n = 42$) or sTACE ($n = 44$) with 38 and 43 patients, respectively, receiving the allocated intervention (Figure 1).

Baseline characteristics are shown in Table 1. Patients were well matched in terms of key prognostic criteria including Child Pugh score, focality, performance status and aetiology of liver disease. Overall 82.6% had Child Pugh A cirrhosis, 67.4% were ECOG performance status 0, 67.4% had multifocal disease, 39.5% were BCLC stage B and 31.4% stage C due to PS >0 .

In the TAE arm, 57.1% of patients received all three planned treatments compared with 56.8% in the sTACE arm and at least two treatments were delivered to 64.3% and 75.0% of patients in the two arms, respectively. Two patients in the sTACE arm received only chemotherapy and were not embolised for one or two of their treatments due to development of portal vein occlusion and extent of bilobar disease, respectively. There was no significant difference between the arms with respect to the number of treatments patients received ($P = 0.26$). The most common reason that patients stopped treatment early was adverse events or toxicity. However the number of patients stopping early was similar in each arm; 7 (16.7%) in the TAE and 8 (18.2%) in the sTACE arm. Treatments were delivered in a timely manner with over 84.3% of treatments in the TAE arm being given within 48 h of the planned procedure and 84.8% in the sTACE arm. In 66.8% of cases, particle embolisation was unilobar and there were no dose reductions required for cisplatin. The median length of hospital stay for all treatments was 2 days range (1–41 days).

Toxicity and safety. For TAE and sTACE, the most common grade 3/4 non-haematological toxicity was grade 3 pain occurring in 7 (18.4%) and 10 (23.3%) patients (Table 2). One patient in the TAE arm and two in the sTACE arm had grade 4 pain. Two patients receiving sTACE developed a liver abscess. The most common biochemical disturbance was grade 3 elevation of gamma-glutamyl transpeptidase occurring in 9 (23.7%) and 17 (39.5%) patients (1 patient in the TAE arm had a grade 4 elevation) and grade 3 hyperbilirubinaemia in 5 (13.2%) and 4 (9.3%) patients. One patient in the TAE arm and two in the sTACE arm experienced grade 4 hyperbilirubinaemia. Within the sTACE group, myelosuppression was very uncommon with only one patient experiencing grade 3 neutropenia. Overall grade 3/4 toxicity occurred in 63.5% and 83.7% in the TAE and sTACE groups, respectively ($P = 0.019$). There were two deaths that were classified as treatment-related. One patient in the sTACE arm completed all three planned treatments and died 43 days later after his third sTACE from decompensated liver disease. The second patient was in the TAE arm and developed renal and liver failure following the first treatment and died 17 days after the TAE procedure.

Efficacy. For patients who had at least one treatment, the end-of-treatment response rates according to RECIST 1.0 were 13.2% and 32.6% ($P = 0.04$) for TAE and sTACE, respectively. Four patients in each group achieved a partial response (PR) on further follow-up giving a best overall response rate (PR) of 23.7% and 41.9%. There were no complete responses (CR) by RECIST and progressive disease (PD) occurred in 26.3% and 7%. Applying the mRECIST criteria, the overall response rate (CR and PR) was 47.3% and 67.4%, respectively (Table 3).

All 86 patients were included in the final survival analysis, which was conducted 15.6 months after the last patient was randomised. At the time of the analysis, the median follow-up was

Table 1. Baseline characteristics

	TAE ($n = 42$)	sTACE ($n = 44$)
Age		
Median (range)	62.6 (30.7, 85.2)	63.2 (44.1, 79.3)
Gender		
Male	35 (83.3)	39 (88.6)
Female	7 (16.7)	5 (11.4)
Child Pugh status		
A	33 (78.6)	38 (86.4)
B	9 (21.4)	6 (13.6)
ECOG PS		
0	27 (64.3)	31 (70.5)
1	9 (21.4)	8 (18.2)
2	6 (14.3)	5 (11.4)
Ascites		
Absent	38 (90.5)	35 (79.5)
Slight	3 (7.1)	7 (15.9)
Moderate	1 (2.4)	1 (2.3)
Unknown	0	1 (2.3)
Hepatitis B		
Absent	37 (88.1)	34 (77.3)
Present	5 (11.9)	9 (20.5)
Unknown	0	1 (2.3)
Hepatitis C		
Absent	23 (54.8)	27 (61.4)
Present	19 (45.2)	16 (36.4)
Unknown	0 (0.0)	1 (2.3)
Alcohol disease		
Absent	37 (88.1)	30 (68.2)
Present	5 (11.9)	13 (29.5)
Unknown	0	1 (2.3)
Disease focality		
Unifocal	13 (31.0)	15 (34.1)
Multifocal: 2 nodules	7 (16.7)	12 (27.3)
Multifocal: >2 nodules	16 (38.1)	14 (31.8)
Diffuse	3 (7.1)	2 (4.5)
Multifocal: number unknown	3 (7.1)	1 (2.3)
Liver volume occupied by tumour		
$\leq 50\%$	36 (85.7)	36 (81.8)
$> 50\%$	2 (4.8)	0
Unknown	4 (9.5)	8 (18.2)
Disease extent		
Unilobar	21 (50.0)	21 (47.7)
Bilobar	16 (38.1)	15 (34.1)
Unknown	5 (11.9)	8 (18.2)
Baseline AFP (ng ml^{-1})		
≤ 400	32 (76.2)	33 (75.0)
> 400	10 (23.8)	11 (25.0)
Size of largest nodule		
≤ 7 cm	28 (66.7)	37 (84.1)
> 7 cm	14 (33.3)	7 (15.9)

Table 1. (Continued)

	TAE (n = 42)	sTACE (n = 44)
Okuda score		
I	25 (59.5)	22 (50.0)
II	8 (19.0)	10 (22.7)
Unknown	9 (21.4)	12 (27.3)
CLIP Score		
0	6 (14.3)	9 (20.5)
1	17 (40.5)	16 (36.4)
2	9 (21.4)	7 (15.9)
3	2 (4.8)	1 (2.3)
Unknown	8 (19.0)	11 (25.0)
French score		
A	16 (38.1)	20 (45.5)
B	18 (42.9)	19 (43.2)
Unknown	8 (19.0)	5 (11.4)
BCLC score		
A	9 (21.4)	11 (25.0)
B	16 (38.1)	18 (40.9)
C	15 (35.7)	12 (27.3)
Unknown	2 (4.8)	3 (6.8)

Abbreviations: AFP = alpha fetal protein; BCLC = Barcelona-Clinic Liver Cancer; CLIP = Cancer of the Liver Italian Program; ECOG = Eastern Cooperative Oncology Group; PS = performance status; sTACE = sequential transarterial chemoembolisation; TAE = transarterial embolisation. All data presented as n (%) unless otherwise stated.

24.0 months (range: 0.03–56.0), 54.7% patients had died and 68.6% had met the progression-free survival endpoint. The cause of death in 83.0% of cases was progressive hepatocellular carcinoma. According to the intention-to-treat analysis there was no difference in survival between the TAE and the sTACE group (HR: 0.91, 95% CI: 0.51–1.62, $P = 0.74$) with a median survival of 17.3 and 16.3 months for each group, respectively (Figure 2B).

The 1-year survival rates were 68% (95% CI; 50–81) and 64% (95% CI; 45–78), and the 2-year survival rates were 39% (95% CI 22–56) and 32% (95% CI 15–50) for TAE and TACE, respectively. There was also no difference in progression-free survival time between the two arms (HR: 0.87, 95% CI: 0.52–1.45, $P = 0.59$) with a median of 7.2 months for TAE and 7.5 months for TACE (Figure 2A).

Four patients in the TAE group and two in the TACE group underwent liver transplantation during the course of the planned treatment and a further five and eight, respectively, underwent transplantation during the follow-up period. When the transplanted patients were censored at the time of transplant the 1-year, 2-year and median overall survival was; 64.5% (44.8–78.8), 32.7% (16.0–50.5) and 16.2 months for TAE and 61.9% (42.4–76.5), 25.4% (9.8–44.7) and 16.0 for sTACE.

Quality of life. Quality of life data was collected at baseline, 72 h pre-randomisation, 2–4 weeks after treatment completion and at the 3 and 6 month follow-up appointments using the EORTC QLQ-C30 questionnaire. Data for the later time points was sparse so the decision was taken to analyse only the change in scores from baseline to post-treatment. This gave 33 assessable patients. None of the scores showed any significant difference between the arms suggesting that the addition of chemotherapy did not lead to deterioration in quality of life compared with bland embolisation (Table 4).

Table 2. Adverse events

Adverse event	Worst grade			
	TAE (n = 38)		sTACE (n = 43)	
	3	4	3	4
Myelosuppression				
Haemoglobin	0	0	1	0
White blood cells	0	0	2	0
Neutrophils	0	0	1	0
Platelets	0	0	4	0
Liver function/complications				
AST	1	0	4	0
ALT	3	0	3	0
Alkaline phosphatase	1	0	0	0
Bilirubin	5	1	4	2
GGT	9	1	17	0
Liver failure	0	1	1	1
Liver abscess	0	0	2	0
Liver infection	0	0	1	0
Constitutional AEs				
Pain	7	1	10	2
Nausea	0	0	1	0
Vomiting	1	0	3	0
Fatigue	2	1	1	0
Bleeding	2	0	3	0
Infection	2	0	0	0
Fever	1	0	1	0
Other	7	2	7	5
Any	17 (44.7%)	6 (15.8%)	28 (65.1%)	8 (18.6%)

Abbreviations: AE = adverse event; ALT = alanine aminotransferase; AST = aspartate aminotransferase; GGT = gamma-glutamyl transpeptidase; sTACE = sequential transarterial chemoembolisation; TAE = transarterial embolisation.

Meta-analysis of trials comparing TAE vs TACE. We identified five eligible trials including the present one, of which three, including the current study, had a mean follow-up of 2 years (Kawai *et al*, 1992; Llovet *et al*, 2002) and the remaining two of 1 year (Chang *et al*, 1994; Malagari *et al*, 2010). We wrote to the authors of one study to obtain information not included in the article (Chang *et al*, 1994). Transarterial chemoembolisation was performed with doxorubicin and lipiodol in two studies (Kawai *et al*, 1992; Llovet *et al*, 2002), with doxorubicin-loaded DEB-TACE in one (Malagari *et al*, 2010) and cisplatin in our study and one other (Chang *et al*, 1994). TAE was performed with a variety of materials: lipiodol and gelfoam (Kawai *et al*, 1992; Chang *et al*, 1994), gelfoam alone (Llovet *et al*, 2002), BeadBlocks (Malagari *et al*, 2010) and PVA particles in our study. As shown in Figure 3, there was no significant difference in mortality between the two modalities (RR 1.09, 95% CI 0.84–1.41, $P = 0.13$) and although there was some heterogeneity between studies ($I^2 = 44%$), it was not significant ($P = 0.13$).

DISCUSSION

According to the most recent EASL-EORTC practice guidelines, chemoembolisation is recommended for patients with BCLC stage B, multinodular asymptomatic tumours without vascular invasion

Table 3. Response rates according to RECIST 1.0 and mRECIST

Response	TAE N= 38 (%)	sTACE N= 43(%)
Response (EOT)		
PR	5 (13.2)	14 (32.6)
SD	18 (47.4)	21 (48.8)
PD	10 (26.3)	3 (7.0)
Missing	5 (13.2)	5 (11.6)
*P=0.04		
Best response		
PR	9 (23.7)	18 (41.9)
SD	15 (39.5)	17 (38.5)
PD	10 (26.3)	3 (7.0)
Missing	4 (10.5)	5 (11.6)
*P=0.08		
mRECIST response (EOT)		
CR	7 (18.4)	13 (30.2)
PR	11 (28.9)	16 (37.2)
SD	4 (10.5)	6 (14.0)
PD	6 (15.8)	2 (4.7)
Missing	10 (26.3)	6 (14.0)
*P=0.068		

Abbreviations: CR=complete response; EOT=end of treatment; PD=progressive disease; PR=partial response; sTACE= Chi-squared response (CR, PR) vs no response (SD, PD, missing).

Table 4. Comparison of quality of life parameters between sTACE- and TAE-treated patients

Score	Mean difference adjusted for baseline score(99% CI)	P-value
Global health status/QOL ^a	- 3.18 (- 28.63, 22.28)	0.73
Functional scales^a		
Physical functioning	3.33 (- 20.89, 27.55)	0.71
Role functioning	- 0.24 (- 37.51, 37.03)	0.99
Emotional functioning	- 2.12 (- 28.21, 23.97)	0.82
Cognitive functioning	- 5.41 (- 30.54, 19.72)	0.56
Social functioning	1.28 (- 34.46, 37.03)	0.92
Symptom scales^{b,c}		
Fatigue	10.76 (- 14.21, 35.73)	0.25
Nausea and vomiting	- 4.66 (- 23.58, 14.27)	0.50
Pain	- 2.33 (- 27.77, 23.11)	0.80
Dyspnoea	- 12.54 (- 41.93, 16.86)	0.25
Insomnia	1.08 (- 28.95, 31.12)	0.92
Appetite loss	- 0.67 (- 32.3, 30.93)	0.95
Constipation	0.38 (- 20.71, 21.47)	0.96
Financial difficulties	- 14.34 (- 37.02, 8.34)	0.09

Abbreviations: CI = confidence interval; QOL = quality of life; sTACE = sequential transarterial chemoembolisation; TAE = transarterial embolisation. Higher mean differences indicate patients in the TACE arm have higher scores than those in the TAE arm.
^aHigher scores are positive; they indicate better functioning and QOL.
^bInformation on diarrhoea was also collected but all but five patients at baseline and four post treatment had a score of 0.
^cHigher scores are negative; they indicate worse symptoms.

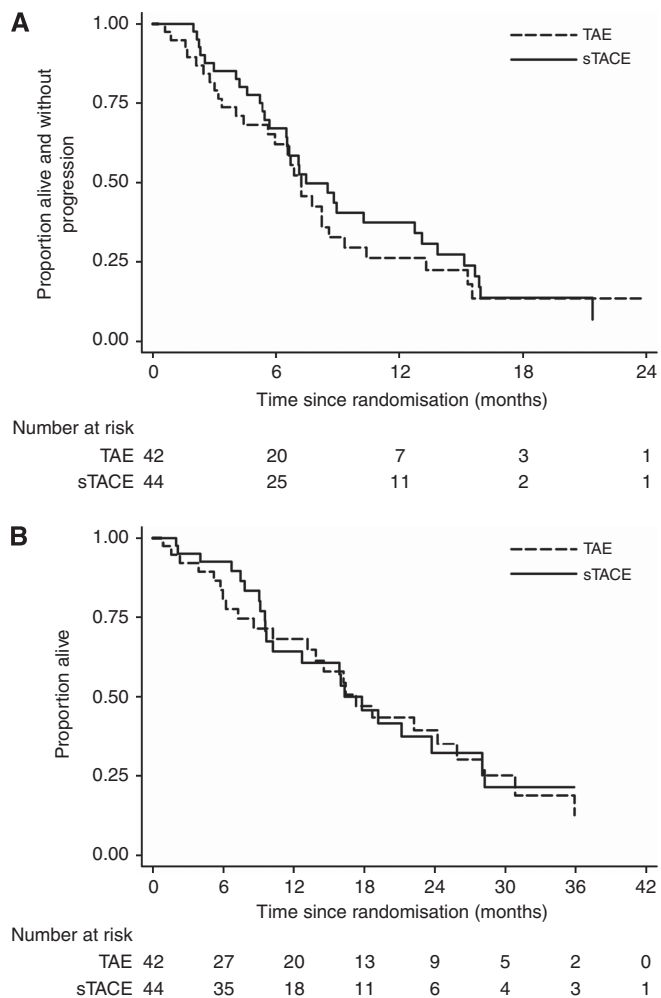


Figure 2. (A) Progression-free survival. (B) overall survival.

or extra-hepatic spread (European Association For The Study Of The Liver and European Organisation For Research And Treatment Of Cancer, 2012). However, the optimal method or schedule remains undefined and the contribution of chemotherapy remains uncertain (Marelli *et al*, 2007). In our trial, we evaluated a novel TACE protocol (sTACE) designed to optimise the effect of chemotherapy and overcome some of the theoretical flaws in the conventional protocols. The protocol proved to be feasible and tolerable in the majority of patients although grade 3/4 toxicity was increased in the sTACE arm compared with the TAE arm. The response rates according to both RECIST 1.0 and mRECIST tended to be higher in the sTACE arm and we have previously shown that end-of-treatment response according to mRECIST is an independent factor predicting better survival (Gillmore *et al*, 2011). However, in this trial, the differences in the mRECIST response between the two arms did not reach significance nor was there evidence that sTACE improved survival compared with TAE.

The patient population included in our study had characteristics similar to those reported in the two previous studies reporting positive outcome with TACE (Llovet *et al*, 2002; Lo *et al*, 2002) and the majority of patients were BCLC stage B. Those patients with BCLC stage C disease were classified as such on the basis of their performance status only. The survival outcome in our study was also very similar to that reported by Lo *et al* (2002), who also used cisplatin-based TACE and reported a 1-year survival of 57% and 2-year survival of 31%, which compares with 66% and 36% in our trial (Lo *et al*, 2002). The recent EASL guidelines (European Association For The Study Of The Liver and European Organisation For Research And Treatment Of Cancer, 2012) acknowledge the wide range of survival outcomes reported for TACE-treated patients, which varies between 13 months in multicentre prospective trials (Doffoel *et al*, 2008) to 48 months in single centres (Burrell *et al*, 2012). Within the BCLC B classification, there is no limit on tumour size, number of tumours

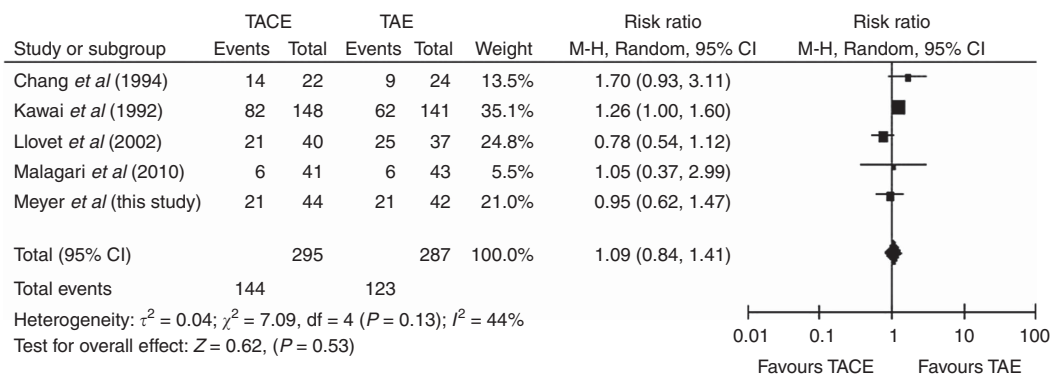


Figure 3. Forrest plot for survival outcomes following TACE or TAE alone in patients with hepatocellular carcinoma in the five existing randomised controlled trials to date.

or level of AFP, and both child A and B patients are included. Hence, the prognostic spectrum within this group is wide and patient selection is likely to be an important determinant of survival.

The anticipated benefit of adding chemotherapy to TACE assumes that hepatocellular is sufficiently chemosensitive to improve survival over and above that obtained by TAE alone. However, systemic chemotherapy has been used for over 30 years in the treatment of HCC and is associated with response rates of less than 10% in large randomised trials (Burroughs *et al*, 2004; Asghar and Meyer, 2012). Furthermore, the survival benefit is uncertain, as there have been no large randomised trials comparing chemotherapy vs best supportive care. Given that transarterial embolisation alone is highly effective in inducing tumour necrosis (Marelli *et al*, 2007), it may be difficult to detect any improvement by adding local chemotherapy, which has limited efficacy as a single agent. In our study, we did not use lipiodol and we have previously reported the lack of evidence for its use (Marelli *et al*, 2007). As chemotherapy is hydrophilic, it rapidly moves into the systemic circulation when co-administered with lipiodol, and pharmacokinetic studies demonstrate that area under the concentration–time curve for doxorubicin is the same whether administered as bolus injection or as an emulsion with lipiodol (Johnson *et al*, 1991; Dodds *et al*, 1996). The recent introduction of DEBs allow the delivery of high local concentrations of doxorubicin with reduced systemic AUC (Varela *et al*, 2007), yet trials comparing DEB-TACE with conventional lipiodol-based TACE (cTACE) do not show an improved response rate, although the toxicity attributable to chemotherapy is substantially reduced (Lammer *et al*, 2010; Malagari *et al*, 2010). Moreover, the results of a randomised trial comparing DEB-TACE with bead-alone TAE has recently been reported and published in abstract form. No significant difference in response rate or survival was found (Brown *et al*, 2012).

As our trial was discontinued at phase II, we were not able to assess the primary survival endpoint of the phase III component. However, some evidence regarding survival has been provided by an update of our previous meta-analysis (Marelli *et al*, 2007) in which we have included data from the current trial and another recently published study (Malagari *et al*, 2010), which increases the total number of patients included to 582 from five randomised trials. No significant difference was found and there is therefore no current evidence that TACE using any method is superior TAE alone. A definitive answer to this question can only be obtained by adequately powered randomised phase III trials.

Despite TAE or TACE, patients relapse at the treated site, or at new hepatic sites or in extra-hepatic locations. Efforts should therefore focus on reducing the rate of relapse or progression by the addition of effective systemic therapy. The current standard of

care for advanced disease is sorafenib, which acts partly through the inhibition of signalling through VEGFR and PDGFR, both known to be important for tumour angiogenesis. Tumour embolisation results in hypoxia and the transcription of genes such as VEGF leads to angiogenesis and this may contribute to tumour re-growth. Hence the concurrent administration of sorafenib with intra-arterial embolisation may prevent relapse of treated disease and growth of new or metastatic tumours. This combination has been shown to be safe in phase I and II trials (Dufour *et al*, 2010; Pawlik *et al*, 2011; Lencioni R *et al*, 2012) and a randomised phase II trial has also been reported (Lencioni R *et al*, 2012). Two randomised phase III trials; TACE 2 (NCT01324076) and ECOG1208 (NCT01004978), continue to accrue and a number of other systemic agents are also being evaluated in this setting.

ACKNOWLEDGEMENTS

This work was in part supported by the National Institute of Health Research (NIHR), Experimental Cancer Medicine Centre Network (ECMC). TM is partly funded by UCLH/UCL Department of Health's NIHR Biomedical Research Centres funding scheme.

REFERENCES

- Asghar U, Meyer T (2012) Are there opportunities for chemotherapy in the treatment of hepatocellular cancer? *J Hepatol* 56(3): 686–695.
- Brown KT, Gonen M, Gian Do K, Covey AM, Getrajdman GI, Zhao B, Sofocleous CT, Beattie C, DeMatteo RP, Solomon SB, Abou-Alfa GK (2012) A randomized single blind controlled trial of beads versus doxorubicin-eluting beads for arterial embolization of hepatocellular carcinoma (HCC). *J Clin Oncol* 30(suppl 34): abstract 143.
- Bruix J, Sherman M, Llovet JM, Beaugrand M, Lencioni R, Burroughs AK, Christensen E, Pagliaro L, Colombo M, Rodes J (2001) Clinical management of hepatocellular carcinoma. Conclusions of the Barcelona-2000 EASL conference. European Association for the Study of the Liver. *J Hepatol* 35(3): 421–430.
- Burrell M, Reig M, Forner A, Barrufet M, de Lope CR, Tremosini S, Ayuso C, Llovet JM, Real MI, Bruix J (2012) Survival of patients with hepatocellular carcinoma treated by transarterial chemoembolisation (TACE) using drug eluting beads. Implications for clinical practice and trial design. *J Hepatol* 56(6): 1330–1335.
- Burroughs A, Hochhauser D, Meyer T (2004) Systemic treatment and liver transplantation for hepatocellular carcinoma: two ends of the therapeutic spectrum. *Lancet Oncol* 5(7): 409–418.
- Chang JM, Tzeng WS, Pan HB, Yang CF, Lai KH (1994) Transcatheter arterial embolization with or without cisplatin treatment of hepatocellular carcinoma. A randomized controlled study. *Cancer* 74(9): 2449–2453.

- CLIP Investigators (1998) A new prognostic system for hepatocellular carcinoma: a retrospective study of 435 patients: the Cancer of the Liver Italian Program (CLIP) investigators. *Hepatology* **28**(3): 751–755.
- Dodds HM, Walpole ET, Rivory LP, Strong RW, Pond SM (1996) Disposition of epirubicin after intraarterial administration in Lipiodol to patients with hepatocellular carcinoma. *Ther Drug Monit* **18**(5): 537–543.
- Doffoel M, Bonnetain F, Bouche O, Vetter D, Abergel A, Fratte S, Grange JD, Stremmsdoerfer N, Blanchi A, Bronowicki JP, Caroli-Bosc FX, Causse X, Masskouri F, Rougier P, Bedenne L (2008) Multicentre randomised phase III trial comparing Tamoxifen alone or with Transarterial Lipiodol Chemoembolisation for unresectable hepatocellular carcinoma in cirrhotic patients (Federation Francophone de Cancerologie Digestive 9402). *Eur J Cancer* **44**(4): 528–538.
- Dufour JF, Hoppe H, Heim MH, Helbling B, Maurhofer O, Szucs-Farkas Z, Kickuth R, Borner M, Candinas D, Saar B (2010) Continuous administration of sorafenib in combination with transarterial chemoembolization in patients with hepatocellular carcinoma: results of a phase I study. *Oncologist* **15**(11): 1198–1204.
- European Association For The Study Of The Liver, European Organisation For Research And Treatment Of Cancer (2012) EASL-EORTC Clinical Practice Guidelines: Management of hepatocellular carcinoma. *J Hepatol* **56**(4): 908–943.
- Forner A, Llovet JM, Bruix J (2012) Chemoembolization for intermediate HCC: is there proof of survival benefit? *J Hepatol* **56**(4): 984–986.
- Gillmore R, Stuart S, Kirkwood A, Hameeduddin A, Woodward N, Burroughs AK, Meyer T (2011) EASL and mRECIST responses are independent prognostic factors for survival in hepatocellular cancer patients treated with transarterial embolization. *J Hepatol* **55**(6): 1309–1316.
- Johnson PJ, Kalayci C, Dobbs N, Raby N, Metivier EM, Summers L, Harper P, Williams R (1991) Pharmacokinetics and toxicity of intraarterial adriamycin for hepatocellular carcinoma: effect of coadministration of lipiodol. *J Hepatol* **13**(1): 120–127.
- Kawai S, Okamura J, Ogawa M, Ohashi Y, Tani M, Inoue J, Kawarada Y, Kusano M, Kubo Y, Kuroda C (1992) Prospective and randomized clinical trial for the treatment of hepatocellular carcinoma—a comparison of lipiodol-transcatheter arterial embolization with and without adriamycin (first cooperative study). The Cooperative Study Group for Liver Cancer Treatment of Japan. *Cancer Chemother Pharmacol* **31**(Suppl): S1–S6.
- Lammer J, Malagari K, Vogl T, Pilleul F, Denys A, Watkinson A, Pitton M, Sergent G, Pfammatter T, Terraz S, Benhamou Y, Avajon Y, Gruenberger T, Pomoni M, Langenberger H, Schuchmann M, Dumortier J, Mueller C, Chevallier P, Lencioni R (2010) Prospective randomized study of doxorubicin-eluting-bead embolization in the treatment of hepatocellular carcinoma: results of the PRECISION V study. *Cardiovasc Intervent Radiol* **33**(1): 41–52.
- Lencioni R, Llovet JM (2010) Modified RECIST (mRECIST) assessment for hepatocellular carcinoma. *Semin Liver Dis* **30**(1): 52–60.
- Lencioni R, Llovet JM, Han G, Tak W-Y, Yang J, Leberre M-A, Niu W, Nicholson K, Meinhardt G, Bruix J (2012) Sorafenib or placebo in combination with transarterial chemoembolization (TACE) with doxorubicin-eluting beads (DEBDOX) for intermediate-stage hepatocellular carcinoma (HCC): Phase II, randomized, double-blind SPACE trial. *J Clin Oncol* **30**(suppl 4): abstract 154.
- Llovet JM, Bru C, Bruix J (1999) Prognosis of hepatocellular carcinoma: the BCLC staging classification. *Semin Liver Dis* **19**(3): 329–338.
- Llovet JM, Bruix J (2003) Systematic review of randomized trials for unresectable hepatocellular carcinoma: Chemoembolization improves survival. *Hepatology* **37**(2): 429–442.
- Llovet JM, Real MI, Montana X, Planas R, Coll S, Aponte J, Ayuso C, Sala M, Muchart J, Sola R, Rodes J, Bruix J (2002) Arterial embolisation or chemoembolisation versus symptomatic treatment in patients with unresectable hepatocellular carcinoma: a randomised controlled trial. *Lancet* **359**(9319): 1734–1739.
- Lo CM, Ngan H, Tso WK, Liu CL, Lam CM, Poon RT, Fan ST, Wong J (2002) Randomized controlled trial of transarterial lipiodol chemoembolization for unresectable hepatocellular carcinoma. *Hepatology* **35**(5): 1164–1171.
- Malagari K, Pomoni M, Kelekis A, Pomoni A, Dourakis S, Spyridopoulos T, Moschouris H, Emmanouil E, Rizos S, Kelekis D (2010) Prospective randomized comparison of chemoembolization with doxorubicin-eluting beads and bland embolization with BeadBlock for hepatocellular carcinoma. *Cardiovasc Intervent Radiol* **33**(3): 541–551.
- Marelli L, Stigliano R, Triantos C, Senzolo M, Cholongitas E, Davies N, Tibballs J, Meyer T, Patch DW, Burroughs AK (2007) Transarterial therapy for hepatocellular carcinoma: which technique is more effective? A systematic review of cohort and randomized studies. *Cardiovasc Intervent Radiol* **30**(1): 6–25.
- Moher D, Liberati A, Tetzlaff J, Altman DG (2009) Preferred reporting items for systematic reviews and meta-analyses: the PRISMA statement. *BMJ* **339**: b2535.
- Okuda K, Ohtsuki T, Obata H, Tomimatsu M, Okazaki N, Hasegawa H, Nakajima Y, Ohnishi K (1985) Natural history of hepatocellular carcinoma and prognosis in relation to treatment. Study of 850 patients. *Cancer* **56**(4): 918–928.
- Oliveri RS, Wetterslev J, Gluud C (2011) Transarterial (chemo)embolisation for unresectable hepatocellular carcinoma. *Cochrane Database Syst Rev* (3): CD004787.
- Parkin DM, Bray F, Ferlay J, Pisani P (2005) Global cancer statistics, 2002. *CA Cancer J Clin* **55**(2): 74–108.
- Pawlik TM, Reyes DK, Cosgrove D, Kamel IR, Bhagat N, Geschwind JF (2011) Phase II trial of sorafenib combined with concurrent transarterial chemoembolization with drug-eluting beads for hepatocellular carcinoma. *J Clin Oncol* **29**(30): 3960–3967.
- Ray Jr CE, Haskal ZJ, Geschwind JF, Funaki BS (2011) The use of transarterial chemoembolization in the treatment of unresectable hepatocellular carcinoma: a response to the Cochrane Collaboration review of 2011. *J Vasc Interv Radiol* **22**(12): 1693–1696.
- Schulz KF, Altman DG, Moher D (2010) CONSORT 2010 statement: updated guidelines for reporting parallel group randomised trials. *BMJ* **340**: c332.
- Tak E, Lee S, Lee J, Rashid MA, Kim YW, Park JH, Park WS, Shokat KM, Ha J, Kim SS (2011) Human carbonyl reductase 1 upregulated by hypoxia renders resistance to apoptosis in hepatocellular carcinoma cells. *J Hepatol* **54**(2): 328–339.
- Therasse P, Arbuck SG, Eisenhauer EA, Wanders J, Kaplan RS, Rubinstein L, Verweij J, Van GM, van Oosterom AT, Christian MC, Gwyther SG (2000) New guidelines to evaluate the response to treatment in solid tumors. European Organization for Research and Treatment of Cancer, National Cancer Institute of the United States, National Cancer Institute of Canada. *J Natl Cancer Inst* **92**(3): 205–216.
- Varela M, Real MI, Burrel M, Forner A, Sala M, Brunet M, Ayuso C, Castells L, Montana X, Llovet JM, Bruix J (2007) Chemoembolization of hepatocellular carcinoma with drug eluting beads: efficacy and doxorubicin pharmacokinetics. *J Hepatol* **46**(3): 474–481.

This work is published under the standard license to publish agreement. After 12 months the work will become freely available and the license terms will switch to a Creative Commons Attribution-NonCommercial-Share Alike 3.0 Unported License.