

ERRATUM

Open Access



# Erratum to: Multiple controls affect arsenite oxidase gene expression in *Herminiimonas arsenicoxydans*

Sandrine Koechler<sup>1</sup>, Jessica Cleiss-Arnold<sup>1</sup>, Caroline Proux<sup>2</sup>, Odile Sismeiro<sup>2,1</sup>, Marie-Agnès Dillies<sup>2</sup>, Florence Goulhen-Chollet<sup>1</sup>, Florence Hommais<sup>3</sup>, Didier Lièvre<sup>1</sup>, Florence Arsène-Ploetze<sup>1</sup>, Jean-Yves Coppé<sup>2</sup> and Philippe N Bertin<sup>1\*</sup>

## Erratum

After the publication of our article [1], similarities between lanes 2, 5 and 6 (aoxB-, rpoN- and dnaJ-) and between lanes 3 and 4 (aoxR- and aoxS-) in Fig. 4 were brought to our attention. This error occurred during the compilation of the Western blot images. A corrected version of Fig. 4 has been assembled from the original Western blot experiments and is presented below. This error affects neither the other results nor the conclusions of the article.

## Author details

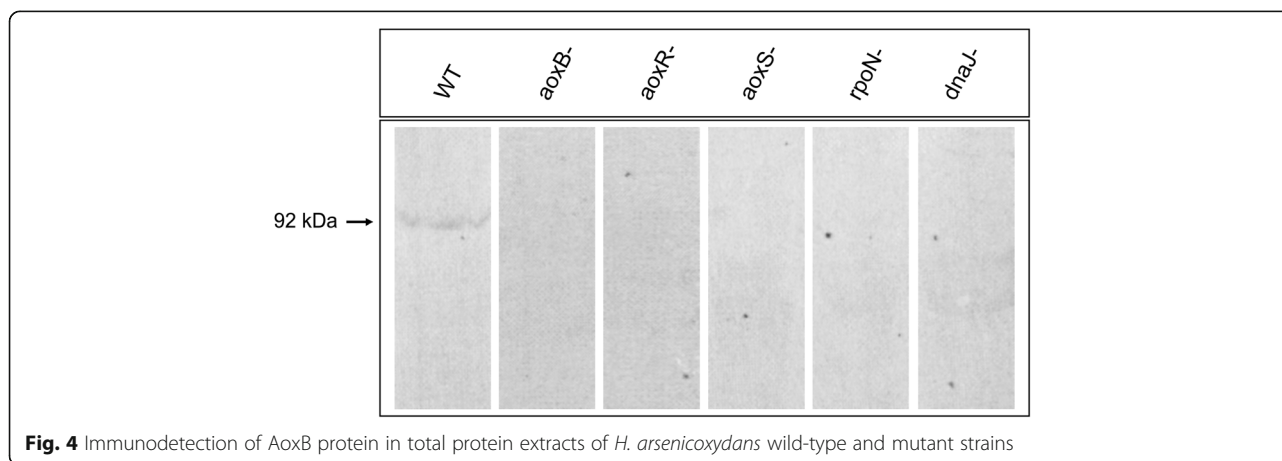
<sup>1</sup>UMR7156 Génétique Moléculaire, Génomique et Microbiologie, CNRS Université de Strasbourg, 28 rue Goethe, 67000 Strasbourg, France. <sup>2</sup>Plate-forme technologique Puces à ADN, Institut Pasteur, 28 rue du Dr. Roux, 75724 Paris cedex 15, France. <sup>3</sup>UMR5240 Microbiologie, Adaptation et Pathogénie, CNRS Université Lyon 1, Bâtiment André Lwoff, 10 rue Dubois, 69622 Villeurbanne cedex, France.

Received: 9 March 2017 Accepted: 9 March 2017

Published online: 28 March 2017

## References

1. Koechler S, Cleiss-Arnold J, Proux C, Sismeiro O, Dillies MA, Goulhen-Chollet F, Hommais F, Lièvre D, Arsène-Ploetze F, Coppé JY, Bertin PN. Multiple controls affect arsenite oxidase gene expression in *Herminiimonas arsenicoxydans*. *BMC Microbiol.* 2010;10(1):53.



**Fig. 4** Immunodetection of AoxB protein in total protein extracts of *H. arsenicoxydans* wild-type and mutant strains

\* Correspondence: philippe.bertin@unistra.fr

<sup>1</sup>UMR7156 Génétique Moléculaire, Génomique et Microbiologie, CNRS Université de Strasbourg, 28 rue Goethe, 67000 Strasbourg, France