



Spatial variability in soil pH and land use as the main influential factor in the red beds of the Nanxiong Basin, China

Ping Yan¹, Hua Peng^{1,†}, Luobin Yan², Shaoyun Zhang¹, Aimin Chen¹ and Kairong Lin¹

¹School of Geography and Planning, Sun Yat-sen University, Guangzhou, Guangdong Province, China

²School of Geographical Sciences, Southwest University, Chongqing, Chongqing Province, China

[†]Deceased.

ABSTRACT

Soil pH is the main factor affecting soil nutrient availability and chemical substances in soil. It is of great significance to study the spatial variability of soil pH for the management of soil nutrients and the prediction of soil pollution. In order to explore the causes of spatial variability in soil pH in red-bed areas, the Nanxiong Basin in south China was selected as an example, and soil pH was measured in the topsoil by nested sampling (0–20 cm depth). The spatial variability characteristics of soil pH were analyzed by geostatistics and classical statistical methods, and the main factors influencing spatial variability in soil pH are discussed. The coefficient of variation in the red-bed areas of Nanxiong Basin was 17.18%, indicating moderate variability. Geostatistical analysis showed that the spherical model is the optimal theoretical model for explaining variability in soil pH, which is influenced by both structural and random factors. Analysis of the spatial distribution and pattern showed that soil pH is relatively high in the northeast and southwest, and is lower in the northwest. These results indicate that land use patterns and topographic factors are the main and secondary influencing factors, respectively.

Subjects Agricultural Science, Soil Science

Keywords Red-bed areas, Soil pH, Spatial variability, Semivariogram, Influencing factors

Submitted 27 August 2018
Accepted 24 December 2018
Published 30 January 2019

Corresponding author
Luobin Yan, yanluobin@swu.edu.cn

Academic editor
Danlin Yu

Additional Information and
Declarations can be found on
page 16

DOI 10.7717/peerj.6342

© Copyright
2019 Yan et al.

Distributed under
Creative Commons CC-BY 4.0

OPEN ACCESS

INTRODUCTION

Soil pH is an indicator of the acidity or alkalinity of soil, and is a reflection of important physical and chemical properties determining soil quality (Nagy & Kónya, 2007). Soil pH also has a profound impact on a number of other soil properties. Extremes in acidity or alkalinity will change the nutrients available and result in the unbalanced absorption of elements in plants (Zhao et al., 2011).

Spatial heterogeneity refers to the lack of homogeneity and the complexity in the distribution in space of the properties of a system (Nagy & Kónya, 2007). The spatial heterogeneity of soil parameters such as pH and content of organic matter and of nitrogen, phosphorus and potassium, has an important influence on the distribution and spatial pattern of plants (Stoyan et al., 2000; Augustine & Frank, 2001; Silvia et al., 2016). Studying

the spatial heterogeneity and the driving factors behind soil properties is significant for revealing ecosystem function and biodiversity ([Augustine & Frank, 2001](#)).

With the continuous development of geographic information technology, studying the spatial variability of soil properties using a combination of geostatistics and GIS (Geographical Information System) technology has become one of the most important topics in the different fields in which soil is investigated ([Romano, 1993](#); [Foroughifar et al., 2013](#)). In conventional soil survey soil properties are recorded at representative sites and assigned to entire mapping unit, which are delineated using both physio-graphic and geopedologic approaches ([Shit, Bhunia & Maiti, 2016](#)). Although soil surveyors are very well aware of the spatial variability of soil properties, conventionally prepared soil maps do not reflect it as soil units are limited by boundaries ([Heuvelink & Webster, 2001](#)). In addition, the conventional method of soil analysis and interpretation are laborious, time consuming, hence becoming expensive. Starting near the end of the 1970s, scholars worldwide applied geostatistics to study the spatial variability of soil properties ([Trangmar, Yost & Uehara, 1986](#)).

Geostatistics is a widely used method for studying the spatial distribution of regionalized variables ([Liu, Shao & Wang, 2012](#); [Emadi et al., 2016](#); [Mohamed et al., 2018](#)). Many scholars have studied the spatial distribution characteristics of various soil properties by this method ([Zhang & Li, 2002](#); [Zhang & Li, 2010](#); [Liu, Shao & Wang, 2011](#); [Turgut & Öztaş, 2012](#); [Liu, Shao & Wang, 2013a](#)). However, most of these studies were limited to a single terrain ([Huang et al., 2012](#); [Zhao et al., 2017](#)), vegetation type [Riha, Senesac & Pallant, 1986](#); [Zaremehrjardi, Taghizadehmehrjardi & Akbarzadeh, 2010](#)), land use ([Mao et al., 2014](#); [Miheretu & Yimer, 2017](#)) or other environmental factors, but analysis of them simultaneously is still lack.

Previous research has revealed that spatial variation in soil pH controls off-season N₂O emission in agricultural soils ([Russenes et al., 2016](#)), however, soil properties vary in space and time across natural ecosystems ([Bogunovic et al., 2017a](#); [Bogunovic et al., 2017b](#); [Griffiths et al., 2017](#)), and distributions of soil nutrients and related environmental factors depend on scale. Many studies have shown that soil pH is negatively correlated with many variables, such as soil organic carbon content, total nitrogen content, total phosphorus content, precipitation, temperature, and clay content ([Liu, Shao & Wang, 2013b](#)). Because the spatial distribution of soil pH has structural and stochastic characteristics, measuring it accurately has implications for crop production ([Liu, Shao & Wang, 2013b](#)). [Reijonen, Metzler & Hartikainen \(2016\)](#) demonstrated that soil pH dictates the accessibility of vanadium V(+V) and V(+IV), by investigating the chemical bioavailability of vanadium species. Therefore, it is important to study the spatial variability of soil pH on a regional scale together with the factors influencing it; these are important for the regulation of soil acidity and alkalinity, control of environmental pollution, and sustainable utilization and management of soil nutrients in addition to the ensemble of components of the regional ecological environment.

In China, the soil that forms on red beds is known as ‘purple soil’ ([Yan et al., 2017](#)). According to the results of the 34-province-wide soil census, the total area of purple soil is 2.17×10^5 km² ([Atsumoto et al., 2015](#)). Many studies have shown that the purple soil formed

on red-bed parent material is the most seriously eroded of all soil types in the Yangtze River Basin (Wang *et al.*, 2009; Li *et al.*, 2008). This is especially visible in humid regions, where severe erosion can threaten the sustainable development of agriculture in South China (Yan *et al.*, 2017). The change in soil structure and the removal of topsoil resulting from erosion may cause the loss of nutrients and environmental degradation, thereby inhibiting plant growth (Sheoran, Sheoran & Poonia, 2010). The change in availability of soil nutrients affects not only crop production and vegetation growth, but also the structure of the ecological environment (Jin & Jiang, 2002; Zhang *et al.*, 2010). The factors affecting the spatial variability in soil pH in red-bed areas have not received much study. Therefore, studying the spatial distribution characteristics of soil pH is important for the sustainable utilization and management of soil nutrients and to improve soil productivity.

This study was carried out in a red-bed area in China with the following objectives: (i) to assess the value of the soil pH; (ii) to reveal the spatial variability and the environmental influencing factors.

MATERIALS AND METHODS

Study area

Nanxiong Basin (24°35'–25°24'N, 113°50'–114°44'E) is a narrow basin located in the northeast of Guangdong Province, China (Fig. 1). The elevation ranges from 48 to 1,421 m above sea level (ASL). The subtropical monsoon climate here is characterised by long hot summers and short winters. The average temperature is 19.6 °C and the annual precipitation and potential evaporation are 1,555.1 mm and 1,678.7 mm, respectively (Yan *et al.*, 2017). The total area of Nanxiong Basin is 3,692 km². The rainy season is from March to August. The dense river networks in Nanxiong Basin belong to the Pearl River systems. Purple soil accompanies the red-bed parent material distributed in the central part of the basin. Nanxiong Basin is a red-bed basin with a severe soil erosion problem due to its dominant purple-soil texture (Calcaric Regosols in the FAO taxonomy); the red beds occupy an area of 1,500 km² and are mainly distributed in the central part of the basin. Land use mainly consists of farmland, shrubland, woodland, and grassland. The main vegetation communities are mixed forest of *Pinus massoniana* Lamb and broadleaf trees, secondary forest with mixed deciduous and broadleaf trees, and mainly artificial *Eucalyptus* and pine forests (Fig. 2, Yan *et al.*, 2017). According to the 2009 1:5,000 land-use map from the Shaoguan Municipal Bureau of Land and Resources, land-use types (Fig. 3) mainly include woodland in the Southeast part, farmland in stretched west to east in central part, bareland in the north and southwest part.

Research method

Soil sample collection

Samples were collected in November 2017 after crops (mainly rice) were fully harvested. A total of 225 samples were gathered from 0–20 cm depth by the nested sampling method at sampling densities. Soil samples were air-dried and passed through a 2 mm sieve for laboratory analysis of soil pH was measured in a 1:2.5 soil:water (DI water) suspension using a PP-50-P11 pH meter (with measurement error ± 0.002) (Liu, Shao & Wang, 2013c)

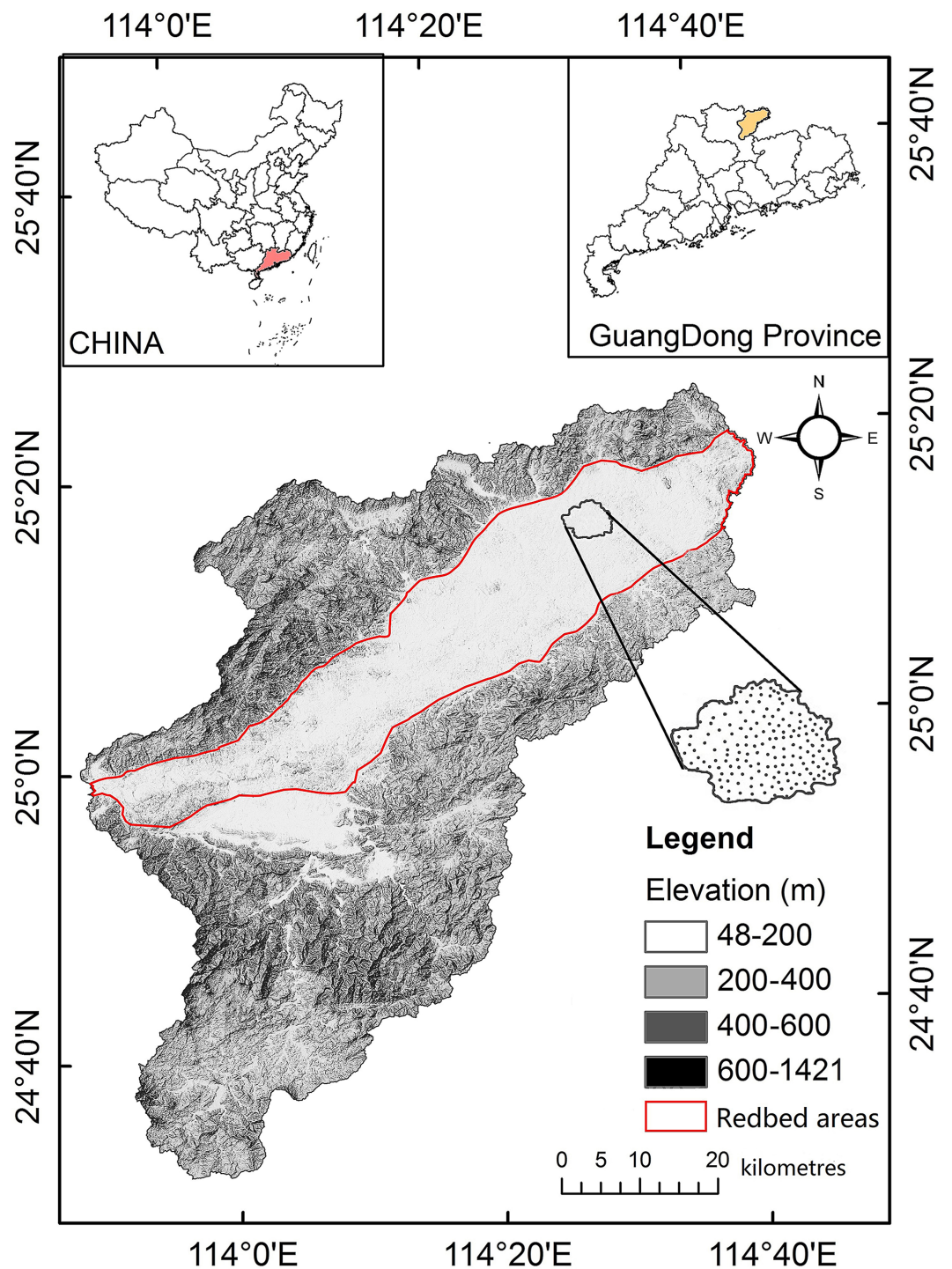


Figure 1 Location map of the study area. Adapted from *Yan et al. (2017)*. Reprinted with permission: this is an open access article distributed under the Creative Commons Attribution License (CC BY 4.0).

Full-size  DOI: [10.7717/peerj.6342/fig-1](https://doi.org/10.7717/peerj.6342/fig-1)



Figure 2 Location map of sampling point. Photo by Ping Yan.

Full-size  DOI: 10.7717/peerj.6342/fig-2

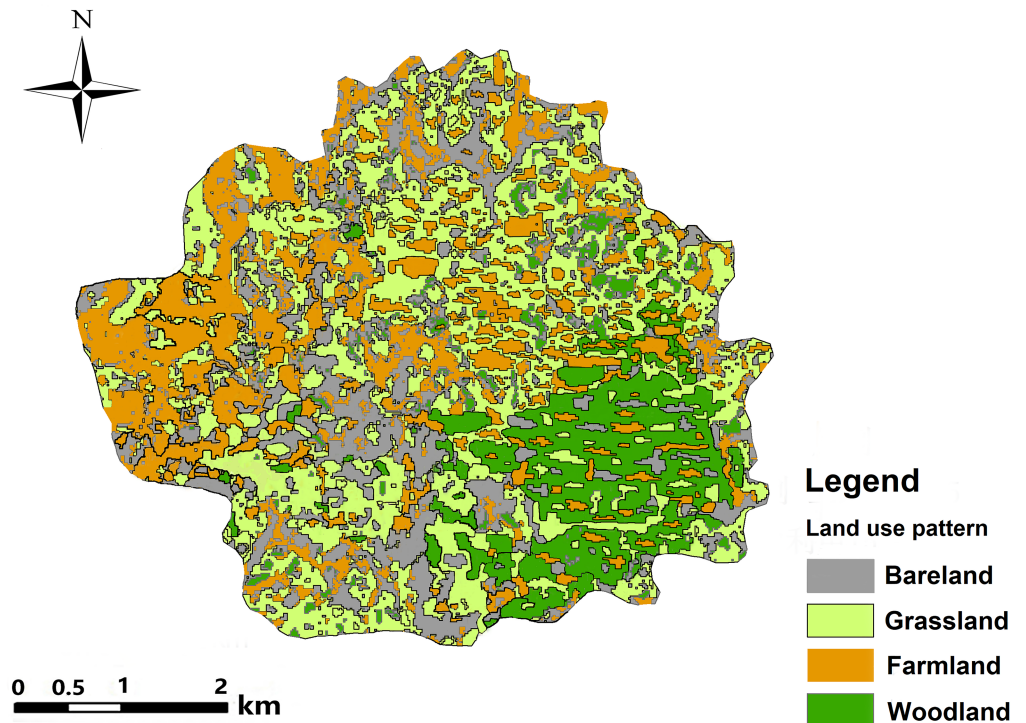


Figure 3 Land-use map of Nanxiong Basin in 2010.

Full-size  DOI: 10.7717/peerj.6342/fig-3

equipped with a calibrated combined glass electrode (*Bogunovic et al., 2017a; Bogunovic et al., 2017b*). The global positioning system (GPS) (5-m precision) was then used to identify the site's longitude, latitude and elevation. The actual sampling sites were chosen to represent the main topography, land use, and vegetation types within the range of vision. Site slope and aspect measured with a geological compass, and information on human activities (irrigation, fertilizer use and crop yield) was collected from surveys of the local inhabitants. The distribution of sample points is shown in [Fig. 1](#).

Data analysis

Some basic statistics were calculated, such as the minimum, maximum, and mean values of measurements and their coefficient of variation (CV). The Kolmogorov–Smirnov (K–S) test and correlation analysis of soil pH with topographical variables were performed to analyse data distribution, using the statistical software SPSS 19 (IBM SPSS Statistics for Windows, IBM Corp., Armonk, NY, USA). GS+7 (Gamma Design Software, Plainwell, MI, USA) was used to do the geostatistical analysis. The K–S method was used to evaluate data normality and asymmetry in terms of skewness and kurtosis because these factors have important implications for the performance of the interpolation methods.

A semivariogram is the basic tool of geostatistics ([Oliver & Webster, 1986](#); [Goovaerts, 1999](#); [Nasseh et al., 2016](#)). The formula used to calculate the semivariogram is:

$$\gamma(h) = \frac{1}{2N(h)} \sum_{i=1}^{N(h)} [Z(x_i) - Z(x_i + h)]^2. \quad (1)$$

In [Eq. \(1\)](#), $N(h)$ is the logarithm of the distance when the distance equals h , and $Z(x_i)$ is the value at location x_i ; $Z(x_i + h)$ is the value at a distance h from x_i ([Yang et al., 2016](#); [Rosemary et al., 2017](#)). Appropriate model functions were fitted to the semivariograms. The semivariograms were used to determine the degree of spatial variability on the basis of the classes of spatial dependence distinguished by [Cambardella et al. \(1994\)](#), strong spatial dependence ($C_0/(C_0 + C) > 75\%$), moderate spatial dependence ($25\% < C_0/(C_0 + C) < 75\%$) and weak spatial dependence ($C_0/(C_0 + C) < 25\%$). In ArcGIS 9.2 (ESRI 2006. ArcGIS Desktop: Redlands, CA: Environmental Systems Research Institute.), we used kriging interpolation in the geostatistics module to draw the spatial distribution map of soil pH and the trend analysis chart in order to analyse the characteristics of the spatial variability. The main factors controlling spatial variation in soil pH and their influence were analysed using maps of the soil type, slope, aspect, elevation, and land use.

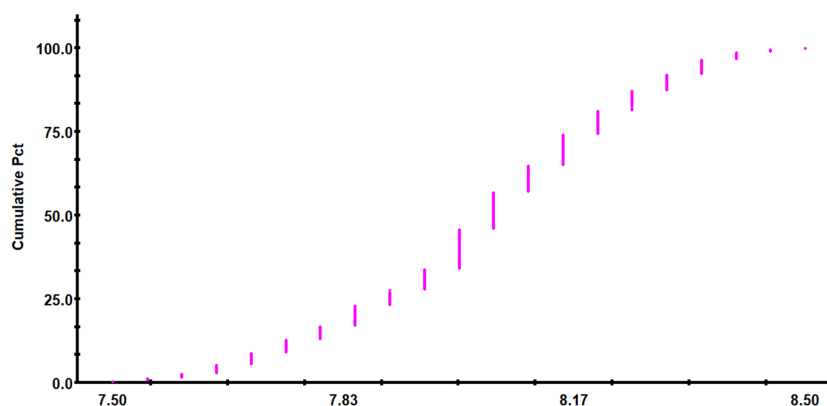
RESULTS

Descriptive statistics of soil pH

Descriptive statistics of soil pH is presented in [Table 1](#). Soil pH of the study area ranged between 7.50 and 8.50, with an average value of 8.04 and a median of 8.05. The mean soil pH for the red-bed region, which was calculated from 225 soil samples, is higher than the estimated mean soil pH for the whole of China (6.8) and lower than the mean soil pH for the Loess Plateau region (8.49). The main factors determining soil pH were the region's humid climate and the relatively high calcium carbonate content in the soft rock underlying the red beds. The criteria proposed by [Wilding \(1985\)](#) were used to classify the parameters into most ($CV > 35\%$), moderate ($CV 15\text{--}35\%$) and least ($CV < 15\%$) variable classes. The standard deviation in soil pH values was 1.38 and the CV value for the pH in this area was 17.18%. Accordingly, the pH in this area could be classified as moderately variable. In general, pH is considered to be a stable soil parameter. Similar CV values were reported by [Tsui, Chen & Hsieh \(2004\)](#), [Fu, Tunney & Zhang \(2010\)](#), and [Liu, Shao & Wang \(2013c\)](#), in all these studies, variability was found to be moderate. According to the observed trend in

Table 1 Statistical characteristic values of soil pH.

Soil properties	Sample size	Range	Median	Mean	Standard deviation	Skewness	Kurtosis	Coefficient of variation (%)	K-S test
pH	225	7.50–8.50	8.05	8.04	1.38	−0.25	−0.42	17.18	0.10

**Figure 4** Trend of the cumulative frequency of soil pH.

Full-size  DOI: [10.7717/peerj.6342/fig-4](https://doi.org/10.7717/peerj.6342/fig-4)

the accumulation frequency of soil pH (Fig. 4), the pH value in the study area was mainly in the range of 7.95–8.20. The K–S test showed that the pH values of the sample points were normally distributed, and thus meet the requirements of geostatistics analysis (Table 1).

Spatial variability in soil pH

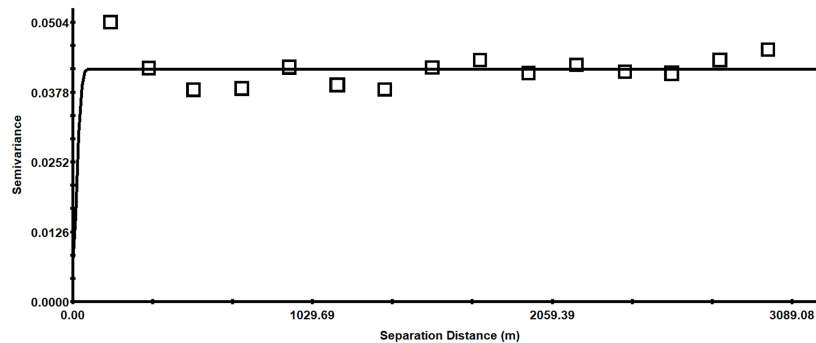
Isotropic semivariogram of soil pH

GS+7.0 software was used to fit the soil pH in the study area to the theoretical model (Table 2). The variogram's fitting model was selected based on the nugget effect, the coefficient of determination (R^2) and the range of variation (Bogunovic et al., 2017a; Bogunovic et al., 2017b). As can be seen from Table 2, the value for nugget (C_0) is 0.12, the value for sill ($C_0 + C$) is 0.18, the ratio of nugget (C_0) and sill ($C_0 + C$) is 66.67%, and the determination coefficient (R^2) is 0.812. High coefficients of determination indicate that the models fitted the semivariogram well (Jeloudar et al., 2014). The nugget–sill ratio of 66.67%, indicating that the soil pH had a moderate spatial dependence (Cambardella et al., 1994). The spherical model gave the best fit for the variation in soil pH in the study area. The main structural factors were climate, parent material and terrain; these can enhance the spatial dependency of soil pH. In contrast, random factors, which are the result of human activity such as farming and fertilization, can make the spatial dependency of soil pH weaker (Isaaks & Srivastava, 1989). This moderate spatial dependence of soil pH in the red beds implies that the spatial variation of soil pH in the study area is mainly caused by both structural and random factors.

As can be seen in Fig. 5, when the separation distance is more than 161 m, the semivariance fluctuates only slightly, and then stabilizes. This trend might be caused by differences in directional variation. The variance at 250 m implies that the range of

Table 2 Isotropic semivariogram theory model and related parameters of soil pH.

Soil property	Theoretical model	Nugget (C_0)	Sill (C_0+C)	Nugget/Sill (%)	Range (m)	Determining coefficient (R^2)
Soil pH	Spherical model	0.12	0.18	66.67	161	0.812

**Figure 5** Isotropic semivariance of soil pH.

Full-size  DOI: [10.7717/peerj.6342/fig-5](https://doi.org/10.7717/peerj.6342/fig-5)

the spatial dependence is much wider than the sampling interval. Therefore, the current sampling design was appropriate for this study.

In order to understand the characteristics of the spatial variation in soil pH, the semivariogram was drawn in four directions, E–W (0°), NE–SW (45°), S–N (90°) and SE–NW (135°), using the GS+7.0 software. As shown in Fig. 6, the spatial variation exhibits large differences in different directions, showing the heterogeneity. Table 3 shows that the best-fitting models in the four directions are all spherical. The nugget (C_0) and sill ($C_0 + C$) values are different and their ratio ranges from 60.24% to 69.23%, indicating moderate variation.

As shown in Fig. 6, the range of the soil pH values from the northeast to the southwest (45°) and from the southeast to the northwest (135°) is significantly smaller than that from east to west (0°) and from north to south (90°), indicating that the variation in the 0° and 90° directions is more complex than those at 45° and 135° .

From east to west (0°), when the separation distance is greater than 161 m, the difference in the semivariance of the soil pH begins to fluctuate, first increasing and afterward decreasing to around 0.0388. The semivariance from north to south (90°) shows the same trend, alternating between high and low, but the degree of fluctuation in the E–W (0°) direction is smaller. When the separation distance is larger than 169 m, the variation of the soil pH in the NE–SW (45°) and SE–NW (135°) directions is more stable near 0.0388, and the degree of variation is not very different. The main reason is that the area is near the badlands hills in the NE–SW and the SE–NW directions; the topography and parent materials are of great influence, and in the SE–NW direction there are more hills and larger undulations. However, in the N–S and E–W directions (0° and 90° , respectively), the soil pH shows high spatial homogeneity because the relief is low and the only land use is

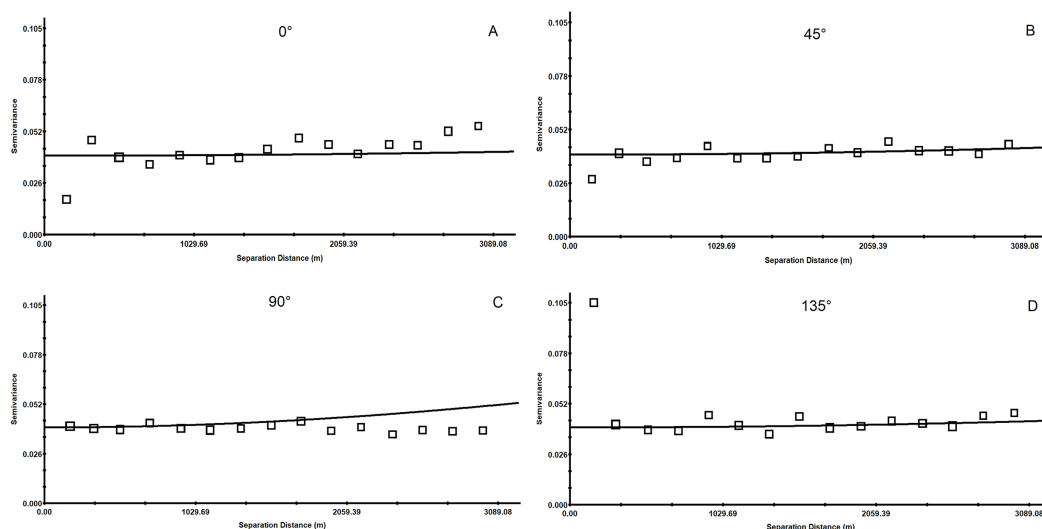


Figure 6 Anisotropic semi-variance of soil pH. The semivariogram of the spatial variation in soil pH was drawn in directions of E–W (0°) in (A); the semivariogram of the spatial variation in soil pH was drawn in directions of NE–SW (45°) in (B); the semivariogram of the spatial variation in soil pH was drawn in directions of S–N (90°) in (C); the semivariogram of the spatial variation in soil pH was drawn in directions of SE–NW (135°) in (D).

Full-size DOI: [10.7717/peerj.6342/fig-6](https://doi.org/10.7717/peerj.6342/fig-6)

Table 3 Anisotropic semivariogram theory model and related parameters of soil pH.

Soil property	Direction	Theoretical model	Nugget (C_0)	Sill (C_0+C)	Nugget/Sill (%)	Range (m)	Determining coefficient (R^2)
Soil pH	0°	Spherical model	0.27	0.39	69.23	161	0.539
	45°	Spherical model	0.32	0.47	68.09	172	0.586
	90°	Spherical model	0.29	0.48	60.42	169	0.612
	135°	Spherical model	0.35	0.51	68.62	182	0.509

farmland in these directions. Taken together, the soil pH in this study area has an obvious spatial heterogeneity, which is suitable for further interpolation analysis.

Analysis of the spatial distribution of soil pH

The effect of trends is a prerequisite for and the basis of prediction by kriging interpolation. The number of parameters that are required for kriging interpolation becomes smaller as the order of the trend effect decreases. Thus, a lower order of the trend effect can reduce error, and many scholars take the lower-order trend among two trends as the trend to be used in conducting prediction by interpolation (Li et al., 2013). Trend analysis can provide a study area sampling point and a three-dimensional perspective with information for the attribute value on the z -axis. The global trend in sampling data can be analysed from different perspectives.

As shown in Fig. 7, soil pH decreases from northeast to southwest, which is consistent with the result of semivariogram analysis. The soil pH values are higher in the northeast and southwest; this pattern can be explained by the difference in land use. In the northeastern

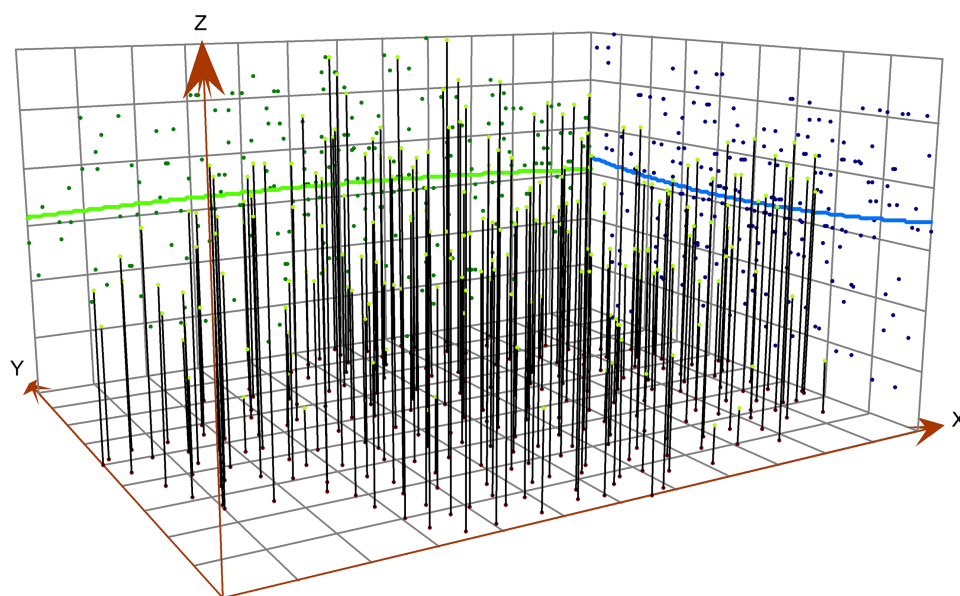


Figure 7 Analysis of soil pH trend.

Full-size  DOI: [10.7717/peerj.6342/fig-7](https://doi.org/10.7717/peerj.6342/fig-7)

Table 4 The influence of slope and slope position on soil pH. The difference between the letters in the same column is significant ($P < 0.05$), and the letters in brackets indicate significant difference ($P < 0.05$).

Slope	0–20 cm Soil layer		
	Upper slope	Middle slope	Down slope
10°	8.41 ± 0.11a(a)	8.39 ± 0.02a(a)	8.01 ± 0.09b(a)
15°	8.32 ± 0.14a(a)	8.29 ± 0.01a(a)	8.15 ± 0.01b(a)
20°	8.09 ± 0.09b(b)	8.02 ± 0.02b(b)	8.26 ± 0.06ab(a)
25°	7.95 ± 0.22b(b)	7.88 ± 0.53b(b)	8.35 ± 0.12a(a)

and southwestern parts, the land is unused land with a high relief. Arable land is mainly distributed in the northwest, where the relief is low and the land is strongly affected by human activities such as the use of nitrogen fertilizer, which might cause a reduction of the pH value in soil (Yüksek *et al.*, 2009).

Table 4 shows that the pH value of the 0–20 cm soil layer tends to decrease from upper slope to middle slope to downslope for slope below 20°, when slope over 20°, this trend is reversed ($P < 0.05$).

Spatial distribution pattern of soil pH

Based on the semivariance function model and the spatial distribution trend analyses, the spatial distribution pattern of soil pH in the study area was analysed by interpolation analysis of the 3D map constructed with the GS+7.0 software (Nasseh *et al.*, 2016). Kriging analysis of the 3D map shows that the soil pH varies greatly in the horizontal direction in the study area (Fig. 8); the soil pH is higher in the northeast and the southwest, increases towards the southwest, and decreases towards the northwest. The result of inverse distance

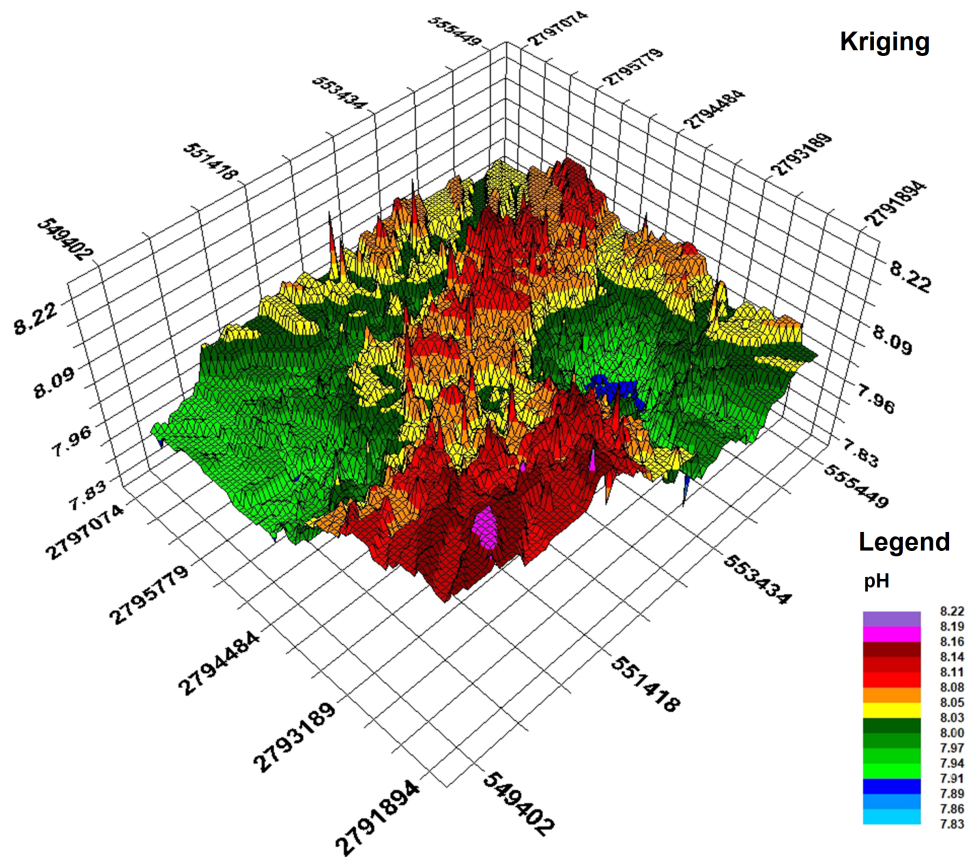


Figure 8 Kriging interpolation map.

Full-size  DOI: [10.7717/peerj.6342/fig-8](https://doi.org/10.7717/peerj.6342/fig-8)

weighting interpolation of the 3D map shows that the overall trend for the pH in the study area is consistent with the results from kriging interpolation (Fig. 9).

DISCUSSION

Analysis of influential factors

Human activities and the natural environment always interact with each other. Natural factors such as climate, topography and soil properties greatly affect the way land is used by human beings and the method (Morales *et al.*, 2009; Wang, Zhang & Huang, 2009; Zucco *et al.*, 2014). In turn, the human choice for different land uses will also affect natural factors such as vegetation types and the physical, chemical and biological properties of the soil.

A large number of studies have shown that the spatial variability of soil pH is related to many factors (Riha, Senesac & Pallant, 1986; Kuzel *et al.*, 1994; Russenes *et al.*, 2016). In this study, the CV is 17.18%, which can be classified as moderate variation, and is the result of both structural factors (parent material, topography, climate) and random factors (soil biology, human disturbance, sampling design and measurement error).

Although the spatial variation of soil pH in the study area is determined by structural factors such as topographic factors and the random factors of human fertilization, it is still

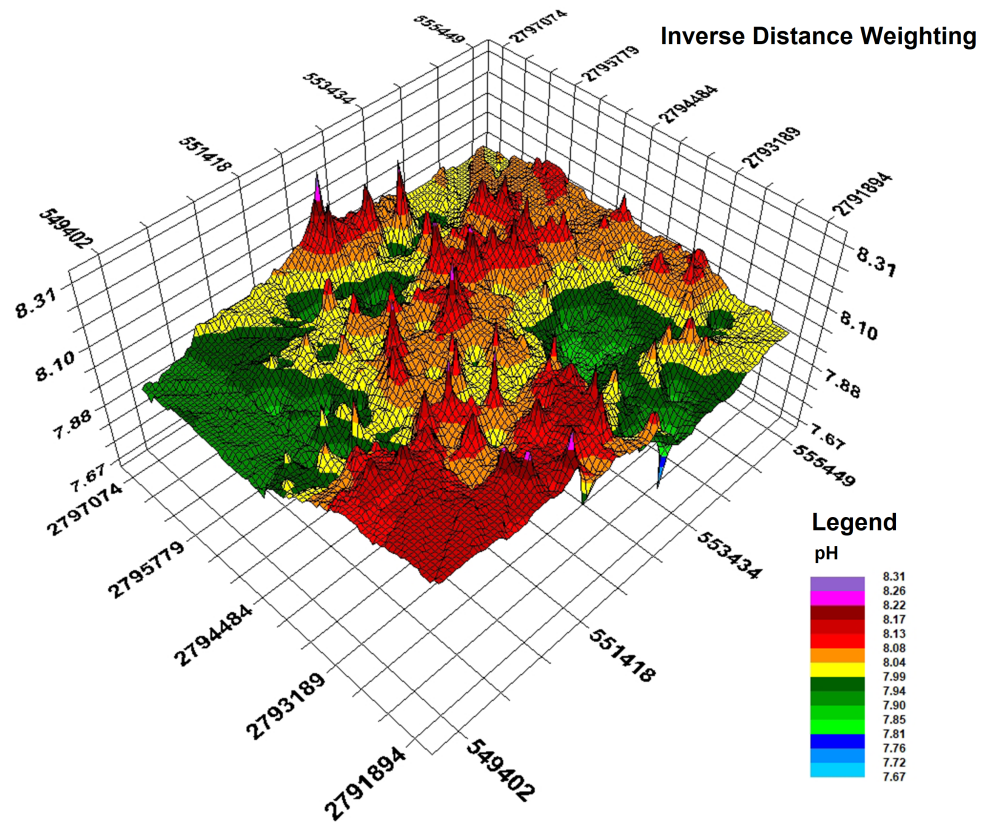


Figure 9 Inverse distance weighting interpolation map.

Full-size  DOI: [10.7717/peerj.6342/fig-9](https://doi.org/10.7717/peerj.6342/fig-9)

not known to what extent each factor affects the spatial variation of soil pH. Therefore, two factors (topographic factors and land use) will be further discussed here to demonstrate their influence.

Topographic factors

Influence of slope and position along the slope on the spatial distribution of soil pH

Severe soil erosion can cause a decrease in the pH value (*Schindelbeck et al., 2008*). Due to the humid monsoon climate and the high erodibility of purple soil, which is caused by its high content of sandy particles, its pH value is generally lower than in the weathering sediments of red beds, which have a pH value higher than 8.

In general, soil pH varies significantly between different slopes and positions along the slope (*Henkel, 2003*). Thus, the pH of surface soil (0–20 cm) also varies with slope and position, reflecting the geomorphic process.

Soil properties on different slope positions were significantly affected by the degree of soil development and the leaching processes (*Tsui, Chen & Hsieh, 2004*). The effects of topographic factors on soil pH were discussed in this study. For slopes under 20° in this study, the pH of soil is the highest on the downslope, followed by that in the middle slope, and is the lowest on the upper slope. In case of ploughed vineyard decrease of

pH value along the slope catena was noticed by *Kenderessy & Lieskovsky (2014)*, which indicates that calcic carbonates could be leached from the surface layer by excess water from upper positions as a result of accelerated erosion. For slopes over 20°, soils on the footslope which is a concave position has a significantly higher pH than those on other slope positions, similar results were reported by *Tsui, Chen & Hsieh (2004)* and *Huggett (1975)*, who confirmed that slope, which is involved in the transport and accumulation of solutes, resulted in a higher pH. Thus, to some extent factors affecting soil erosion have an influence on soil pH. However, in this study case in red beds area the concrete mechanisms, how topographical factors affect the pH in different positions, needs further research.

In addition, as we know, topography is a structure factor influencing the spatial variability of soil pH. In our study area, in the E–W and N–S directions (0° and 90°, respectively), the soil pH shows high spatial homogeneity because the relief is low and the only land use is farmland. An important result is that the topography influences soil pH mainly through the slope and indirectly via effects on land use patterns; this is a general conclusion that has rarely been acknowledged elsewhere.

Influence of aspect on the spatial distribution of soil pH

Different slope aspects experience different solar radiation, temperature and water conditions. The vegetation coverage is also different. Therefore, differences in physical, chemical, and biological processes in the topsoil are correlated with different aspect directions, leading to a heterogeneity in pH content and distribution in the topsoil (*Vieira et al., 2009*; *Salehi, Esfandiarpour & Sarshogh, 2011*). By combining the aspect distribution map of the study area and the geostatistical analysis module in the ArcGIS software, the spatial distribution map of the soil pH was analysed (*Figs. 10 and 11*). The result shows that the average pH value varies with aspect of the slope in the study area. The soil pH values on north- and southwest-facing slopes are relatively higher than on slopes of other aspects.

The location of the study area, in the humid red-bed area in south China, is representative for the concentrated distribution of soft rock in red beds. The best fitting models were all spherical, with a high degree of fit for the spatial variability of soil pH, and they were verified in various studies (*Wang et al., 2011*; *Liu, Shao & Wang, 2013c*), indicating that the spatial structure of soil pH in the study area was distinct.

Kerry & Oliver (2004) indicated that, as a rough guide, future sampling intervals should be chosen to be less than half the variogram range. According to the results of this study, future sampling intervals for monitoring pH should be 80–100 m.

Land use pattern

Different systems of land use result in different levels of human land-use activities and have different effects on soil properties. The results showed that land use had a significant effect on surface soil pH ($P < 0.05$). As shown in *Fig. 12*, among the four categories of land use patterns (farmland, woodland, grassland and bare land), the average soil pH differs significantly between different land uses ($P < 0.05$). Among them, there is not much difference between woodland and grassland, though. The soil pH between different land

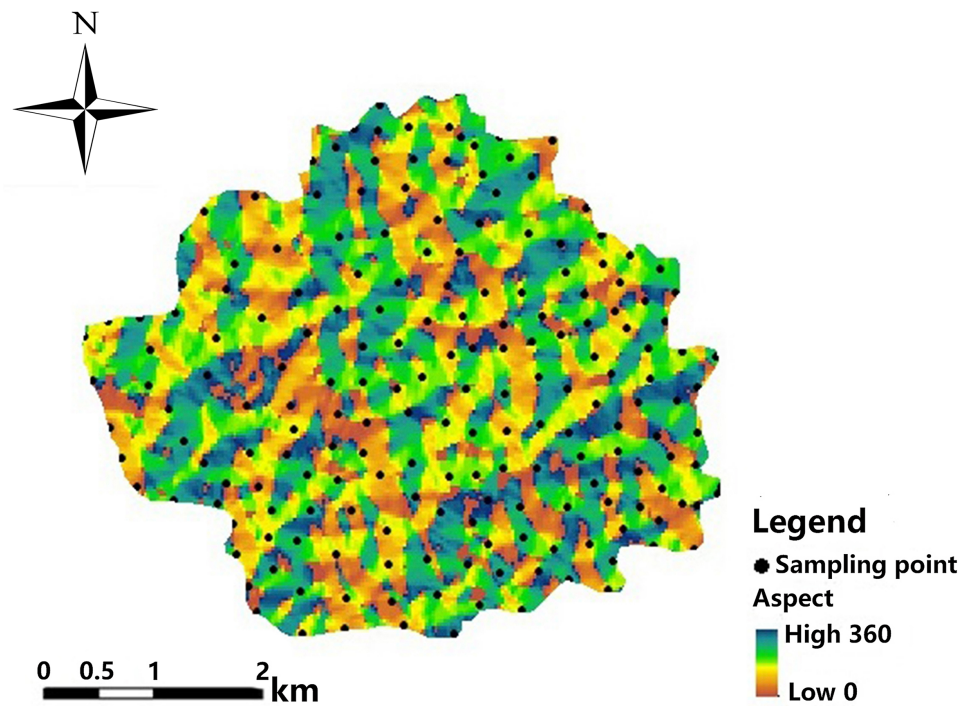


Figure 10 Slope distribution map.

Full-size DOI: 10.7717/peerj.6342/fig-10

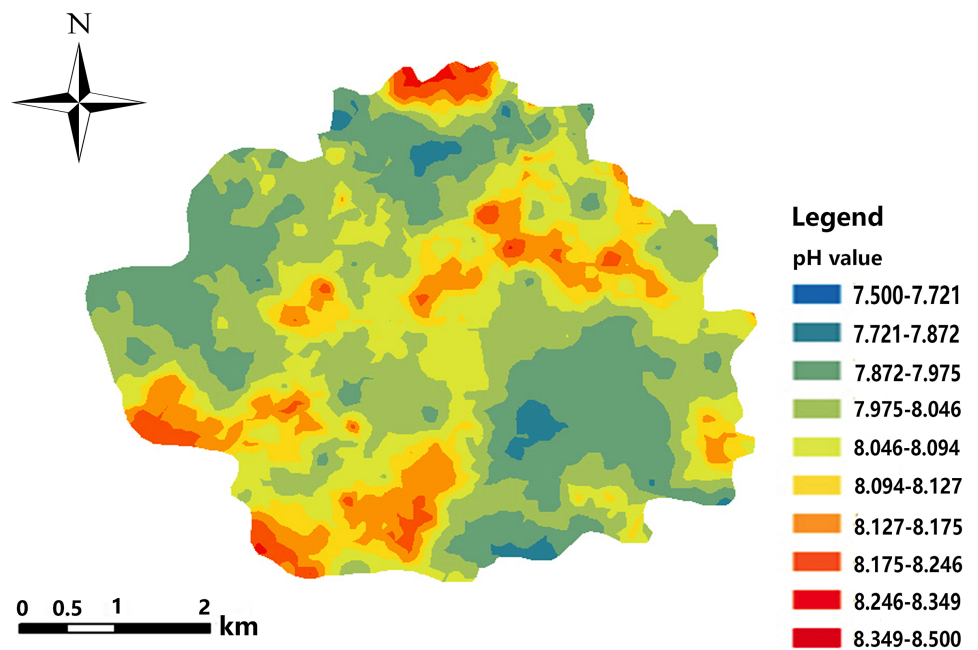


Figure 11 Spatial distribution map of soil pH.

Full-size DOI: 10.7717/peerj.6342/fig-11

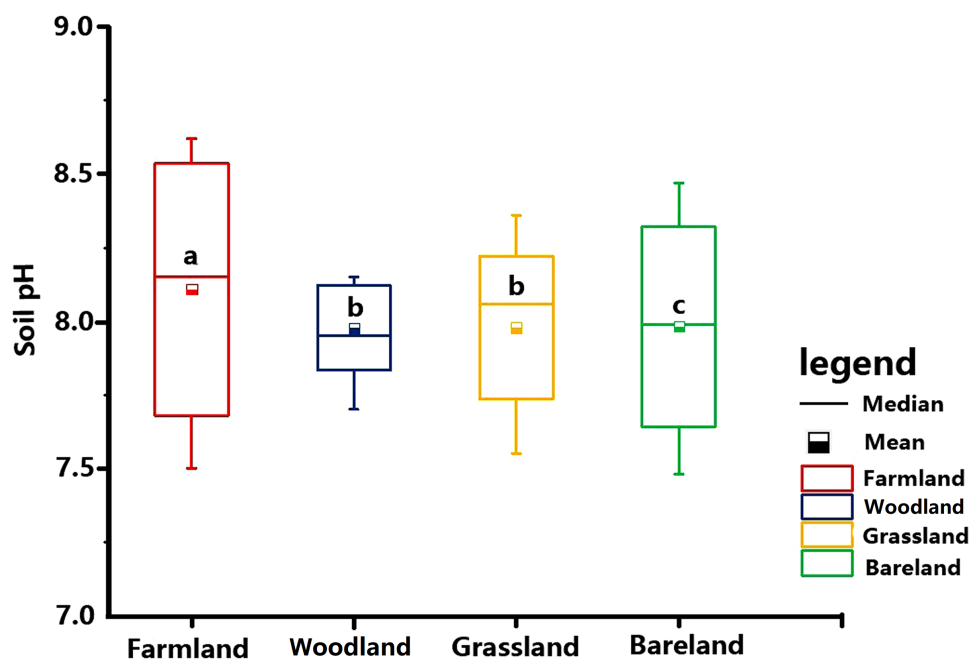


Figure 12 Different land use patterns of soil pH.

Full-size DOI: [10.7717/peerj.6342/fig-12](https://doi.org/10.7717/peerj.6342/fig-12)

Table 5 Semivariogram models and model parameters for soil properties in four land uses.

Land use patterns	Theoretical model	Coefficient of variation (%)	Nugget (C_0)	Sill (C_0+C)	Nugget/Sill (%)	Range (m)	Determining coefficient (R^2)
Farmland	Spherical model	17.25	0.22	0.37	59.15	195	0.62
Forestland	Spherical model	17.09	0.31	0.48	63.49	180	0.58
Grassland	Spherical model	16.95	0.21	0.34	62.12	175	0.56
Bareland	Spherical model	14.21	0.19	0.29	65.59	181	0.59

use patterns varied from 8.09 for farmland to 7.98 for bare land, 7.97 for grassland and 7.96 for woodland. A comparison of the pH values in farmland and woodland topsoils shows that the pH value of woodland is lowest. An explanation for this might be that the tree species on woodland is Masson pine (*Pinus massoniana* Lamb), which has an acidifying effect on soil.

At 14.21%, the CV of pH is lowest on bare land; the pH of grassland and woodland is lower than that of farmland (Table 5). However, previous research established that the pH of woodland and farmland had the lowest CV, which could be the result of the uniform conditions in the region, such as small changes in slope and its direction, leading to a uniformity of soil (Cambardella et al., 1994; Kavianpoor et al., 2012; Jeloudar et al., 2014). The possible reasons require further investigation.

On the whole, the spatial distribution of soil pH is closely related to land use (Mao et al., 2014). This might be caused by the application of urea fertilizer, which has been proven to increase the soil pH (Petric & Jackson, 1984).

Numerous studies have shown a decreasing soil pH with increasing number of cropping years (Meng, Li & Liu, 2000; Zhao, Wu & Liu, 2000). The average soil pH is the highest in farmland, followed by grassland and bare land, and the average pH in woodland is lowest. By studying the spatial variability of soil properties in an Alfisol soil catena, Rosemary et al. (2017) arrived at similar conclusions, namely that soil pH in paddies is high.

Influence of aspect on the spatial distribution of soil pH needs further research.

CONCLUSION

The investigated parameters follow a normal distribution. For pH, the best-fitting variogram model was a spherical one. A practical application of our research results may be that the cost of the production cycle can be reduced by the inclusion of the models we established for application in directional semivariograms in interpolation analysis, improving the reliability of local assessments of the analysed soil pH. In order to reduce production costs, a sampling interval of 80–100 m is recommended for soil pH. The spatial distribution maps based on the kriging interpolation method were successfully applied in soil pH studies.

In this study, the CV is 17.18%, which can be classified as moderate variation, and is the result of both structural factors (parent material, topography, climate) and random factors (soil biology, human disturbance, sampling design and measurement error). This study focused on the spatial variability of soil pH as a result of the interaction of topographic factors, soil and land use patterns. In general, studying the spatial variability of soil pH can provide a theoretical basis for the restoration and improvement of soil quality, including the rapid restoration of soil in red-bed ecosystems and ecological reconstruction in the moist environment of south China.

ADDITIONAL INFORMATION AND DECLARATIONS

Funding

This work was supported by the National Natural Science Foundation of China (NO. 41771088 and NO. 51779279) and the Special Project for Key Basic Research of the Chinese Ministry of Science and Technology (NO. 2013FY111900). The funders had no role in study design, data collection and analysis, decision to publish, or preparation of the manuscript.

Grant Disclosures

The following grant information was disclosed by the authors:

National Natural Science Foundation of China: 41771088, 51779279.

Key Basic Research of the Chinese Ministry of Science and Technology: 2013FY111900.

Competing Interests

The authors declare there are no competing interests.

Author Contributions

- Ping Yan conceived and designed the experiments, performed the experiments, analyzed the data, contributed reagents/materials/analysis tools, prepared figures and/or tables, authored or reviewed drafts of the paper, approved the final draft.
- Hua Peng conceived and designed the experiments, performed the experiments, analyzed the data, contributed reagents/materials/analysis tools, prepared figures and/or tables, authored or reviewed drafts of the paper, professor Peng died, unfortunately, but he made the same contribution as the corresponding author.
- Luobin Yan conceived and designed the experiments, analyzed the data, contributed reagents/materials/analysis tools, prepared figures and/or tables, authored or reviewed drafts of the paper, approved the final draft.
- Shaoyun Zhang performed the experiments, analyzed the data, contributed reagents/materials/analysis tools, approved the final draft.
- Aimin Chen performed the experiments, analyzed the data, contributed reagents/materials/analysis tools, prepared figures and/or tables, approved the final draft.
- Kairong Lin authored or reviewed drafts of the paper, approved the final draft.

Field Study Permissions

The following information was supplied relating to field study approvals (i.e., approving body and any reference numbers):

The study area in Nanxiong Basin does not belong to an institute or agency, thus, a field permit was not necessary.

Data Availability

The following information was supplied regarding data availability:

The raw measurements are available in [Supplemental Information 1](#).

Supplemental Information

Supplemental information for this article can be found online at <http://dx.doi.org/10.7717/peerj.6342#supplemental-information>.

REFERENCES

- Atsumoto SM, Ishimatsu H, Shimada H, Sasaoka T, Matsui K, Jalu Kusuma G. 2015.** Prevention of acid mine drainage (AMD) by using sulfur-bearing rocks for a cover layer in a dry cover system in view of the form of sulfur. *Inzynieria Mineralna* 2:29–35 DOI 10.29227/IM-2015-02-06.
- Augustine DJ, Frank DA. 2001.** Effects of migratory grazers on spatial heterogeneity of soil nitrogen properties in a grassland ecosystem. *Ecology* 82(11):3149–3162 DOI 10.2307/2679841.
- Bogunovic I, Kusic I, Mesic M, Percin A, Zgorelec Z, Bilandžija D, Jonjica A, Pereirab P. 2017a.** Reducing sampling intensity in order to investigate spatial variability of soil ph, organic matter and available phosphorus using co-kriging techniques. A case study of acid soils in eastern croatia. *Archiv für Acker- und Pflanzenbau und Bodenkunde* 63(13):1852–1863 DOI 10.1080/03650340.2017.1311013.

- Bogunovic I, Trevisani S, Seput M, Juzbasic D, Durdevic B. 2017b.** Short-range and regional spatial variability of soil chemical properties in an agro-ecosystem in eastern Croatia. *Catena* **154**:50–62 DOI [10.1016/j.catena.2017.02.018](https://doi.org/10.1016/j.catena.2017.02.018).
- Cambardella CA, Moorman TB, Parkin TB, Karlen DL, Novak JM, Turco R, Konopka AE. 1994.** Field-scale variability of soil properties in central iowa soils. *Soil Science Society of America Journal* **58**:1501–1511 DOI [10.2136/sssaj1994.03615995005800050033x](https://doi.org/10.2136/sssaj1994.03615995005800050033x).
- Emadi M, Shahriari AR, Sadegh-Zadeh F, Seh-Bardan BJ, Dindarlou A. 2016.** Geostatistics-based spatial distribution of soil moisture and temperature regime classes in mazandaran province, northern Iran. *Archives of Agronomy & Soil Science* **62**(4):502–522 DOI [10.1080/03650340.2015.1065607](https://doi.org/10.1080/03650340.2015.1065607).
- Foroughifar H, Jafarzadeh AA, Torabi H, Pakpour A, Miransari M. 2013.** Using geostatistics and geographic information system techniques to characterize spatial variability of soil properties, including micronutrients. *Communications in Soil Science & Plant Analysis* **44**(8):1273–1281 DOI [10.1080/00103624.2012.758279](https://doi.org/10.1080/00103624.2012.758279).
- Fu WJ, Tunney H, Zhang CS. 2010.** Spatial variation of soil nutrients in a dairy farm and its implications for site-specific fertilizer application. *Soil & Tillage Research* **106**(2):185–193 DOI [10.1016/j.still.2009.12.0](https://doi.org/10.1016/j.still.2009.12.0).
- Goovaerts P. 1999.** Geostatistics in soil science: state-of-the-art and perspectives. *Geoderma* **89**(1–2):1–45 DOI [10.1016/S0016-7061\(98\)00078-0](https://doi.org/10.1016/S0016-7061(98)00078-0).
- Griffiths NA, Hanson PJ, Ricciuto DM, Iversen CM, Jensen AM, Malhotra A, McFarlane KJ, Norby RJ, Sargsyan K, Sebestyen SD, Shi XY, Walker AP, Eric JW, Warren JM, Weston DJ. 2017.** Temporal and spatial variation in peatland carbon cycling and implications for interpreting responses of an ecosystem-scale warming experiment. *Soil Science Society of America Journal* **81**(6):1668–1688 DOI [10.2136/sssaj2016.12.0422](https://doi.org/10.2136/sssaj2016.12.0422).
- Henkel TW. 2003.** Monodominance in the ectomycorrhizal dicymbe corymbosa (caesalpiaceae) from Guyana. *Journal of Tropical Ecology* **19**(4):417–437 DOI [10.1017/S0266467403003468](https://doi.org/10.1017/S0266467403003468).
- Heuvelink GBM, Webster R. 2001.** Modeling soil variation: past, present, and future. *Geoderma* **100**(3–4):269–301 DOI [10.1016/S0016-7061\(01\)00025-8](https://doi.org/10.1016/S0016-7061(01)00025-8).
- Huang Y, Chen L, Fu B, Huang Z, Gong J, Lu X. 2012.** Effect of land use and topography on spatial variability of soil moisture in a gully catchment of the Loess Plateau, China. *Ecohydrology* **5**(6):826–833 DOI [10.1002/eco.273](https://doi.org/10.1002/eco.273).
- Huggett RJ. 1975.** Soil landscape systems: a model of soil genesis. *Geoderma* **13**(1):1–22 DOI [10.1016/0016-7061\(75\)90035-X](https://doi.org/10.1016/0016-7061(75)90035-X).
- Isaaks EH, Srivastava RM. 1989.** *An introduction to applied geostatistics*. New York: Oxford University Press.
- Jeloudar ZJ, Shabaanzadeh S, Kavian A, Shokri M. 2014.** Spatial variability of soil features affected by landuse type using geostatistics. *Ecopersia* **2**:667–679.
- Jin J, Jiang C. 2002.** Spatial variability of soil nutrients and site-specific nutrient management in the P.R. China. *Computers & Electronics in Agriculture* **36**(2–3):165–172 DOI [10.1016/S0168-1699\(02\)00099-6](https://doi.org/10.1016/S0168-1699(02)00099-6).

- Kavianpoor H, Ouri AE, Jeloudar ZJ, Kavian A. 2012.** Spatial variability of some chemical and physical soil properties in Nesho mountainous rangelands. *American Journal of Environmental Engineering* **2**:34–44 DOI [10.5923/j.ajee.20120201.06](https://doi.org/10.5923/j.ajee.20120201.06).
- Kenderessy P, Lieskovsky J. 2014.** Impact of the soil erosion on soil properties along a slope catena-case study horný ohaj vineyards, Slovakia. *Carpathian Journal of Earth & Environmental Sciences* **9**(2):143–152.
- Kerry R, Oliver MA. 2004.** Average variograms to guide soil sampling. *International Journal of Applied Earth Observation & Geoinformation* **5**:307–325 DOI [10.1016/j.jag.2004.07.005](https://doi.org/10.1016/j.jag.2004.07.005).
- Kuzel S, Nýdl V, Kolár L, Tichý R. 1994.** Spatial variability of cadmium, pH, organic matter in soil and its dependence on sampling scales. *Water Air & Soil Pollution* **78**(1–2):51–59 DOI [10.1007/BF00475667](https://doi.org/10.1007/BF00475667).
- Li YC, Liu CX, Zhao CY, Huang JH. 2008.** Spatiotemporal features of soil and water loss in the Three Gorges Reservoir area of Chongqing. *Journal of Geographical Sciences* **63**(5):502–513 DOI [10.11821/xb200805006](https://doi.org/10.11821/xb200805006).
- Li WH, Wang C, Yang M, Wang L. 2013.** Trend effect and an isotropy of soil particle composition in the Chengdu Plain. *Journal of Agricultural Science* **5**(2):56–63 DOI [10.5539/jas.v5n2p56](https://doi.org/10.5539/jas.v5n2p56).
- Liu ZP, Shao MA, Wang YQ. 2011.** Effect of environmental factors on regional soil organic carbon stocks across the Loess Plateau region, China. *Agriculture Ecosystems & Environment* **142**(3):184–194 DOI [10.1016/j.agee.2011.05.002](https://doi.org/10.1016/j.agee.2011.05.002).
- Liu ZP, Shao MA, Wang YQ. 2012.** Large-scale spatial variability and distribution of soil organic carbon across the entire Loess Plateau, China. *Soil Research* **50**:114–124 DOI [10.1071/SR11183](https://doi.org/10.1071/SR11183).
- Liu ZP, Shao MA, Wang YQ. 2013a.** Spatial patterns of soil total nitrogen and soil total phosphorus across the entire Loess Plateau region of China. *Geoderma* **197–198**:67–78 DOI [10.1071/SR12190](https://doi.org/10.1071/SR12190).
- Liu ZP, Shao MA, Wang YQ. 2013b.** Scale-dependent correlations between soil properties and environmental factors across the Loess Plateau of China. *Soil Research* **51**(2):112–123 DOI [10.1071/SR12190](https://doi.org/10.1071/SR12190).
- Liu ZP, Shao MA, Wang YQ. 2013c.** Large-scale spatial interpolation of soil pH across the Loess Plateau, China. *Environmental Earth Sciences* **69**(8):2731–2741 DOI [10.1007/s12665-012-2095-z](https://doi.org/10.1007/s12665-012-2095-z).
- Mao Y, Sang S, Liu S, Jia J. 2014.** Spatial distribution of ph and organic matter in urban soils and its implications on site-specific land uses in Xuzhou, China. *Comptes Rendus Biologies* **337**(5):332–337 DOI [10.1016/j.crv.2014.02.008](https://doi.org/10.1016/j.crv.2014.02.008).
- Meng HG, Li Z, Liu YJ. 2000.** Characteristics of the physical and chemical properties in the protected vegetable soils. *Bulletin of Chinese Soil Science* **31**:70–82.
- Miheretu BA, Yimer AA. 2017.** Spatial variability of selected soil properties in relation to land use and slope position in gelana sub-watershed, northern highlands of Ethiopia. *Physical Geography* **3**:1–16 DOI [10.1080/02723646.2017.13809](https://doi.org/10.1080/02723646.2017.13809).

- Mohamed JEH, Abdelkader L, Mohamed F, Mohamed S. 2018.** Spatial distribution of regionalized variables on reservoirs and groundwater resources based on geostatistical analysis using GIS: case of Rmel-Oulad Ogbane aquifers (Larache, NW Morocco). *Arabian Journal of Geosciences* **11**(5):104 DOI [10.1007/s12517-018-3430-9](https://doi.org/10.1007/s12517-018-3430-9).
- Morales J, Rodríguez A, Alberto V, Machado C, Criado C. 2009.** The impact of human activities on the natural environment of the canary islands (spain) during the pre-hispanic stage (3rd–2nd century bc to 15th century ad): an overview. *Environmental Archaeology* **14**(1):27–36 DOI [10.1179/174963109X400655](https://doi.org/10.1179/174963109X400655).
- Nagy NM, Kónya J. 2007.** Study of pH-dependent charges of soils by surface acidbase properties. *Journal of Colloid & Interface Science* **305**(1):94–100 DOI [10.1016/j.jcis.2006.09.040](https://doi.org/10.1016/j.jcis.2006.09.040).
- Nasseh S, Moghaddas NH, Ghafoori M, Asghari O, Bazaz JB. 2016.** Spatial variability analysis of subsurface soil in the city of mashhad, northern east Iran. *International Journal of Mining and Geo-Engineering* **50**(2):219–229 DOI [10.22059/ijmge.2016.59832](https://doi.org/10.22059/ijmge.2016.59832).
- Oliver MA, Webster R. 1986.** Semi-variograms for modelling the spatial pattern of landform and soil properties. *Earth Surface Processes & Landforms* **11**(5):491–504 DOI [10.1002/esp.3290110504](https://doi.org/10.1002/esp.3290110504).
- Petrie SE, Jackson TL. 1984.** Effects of fertilization on soil solution pH and manganese concentration. *Soil Science Society of America Journal* **48**:315–318 DOI [10.2136/sssaj1984.03615995004800020018x](https://doi.org/10.2136/sssaj1984.03615995004800020018x).
- Reijonen I, Metzler M, Hartikainen H. 2016.** Impact of soil pH and organic matter on the chemical bioavailability of vanadium species: the underlying basis for risk assessment. *Environmental Pollution* **210**:371–379 DOI [10.1016/j.envpol.2015.12.046](https://doi.org/10.1016/j.envpol.2015.12.046).
- Riha SJ, Senesac G, Pallant E. 1986.** Effects of forest vegetation on spatial variability of surface mineral soil pH, soluble aluminum and carbon. *Water Air & Soil Pollution* **31**(3–4):929–940 DOI [10.1007/BF00284238](https://doi.org/10.1007/BF00284238).
- Romano N. 1993.** Use of an inverse method and geostatistics to estimate soil hydraulic conductivity for spatial variability analysis. *Geoderma* **60**(1–4):169–186 DOI [10.1016/0016-7061\(93\)90025-G](https://doi.org/10.1016/0016-7061(93)90025-G).
- Rosemary F, Vitharana UWA, Indraratne SP, Weerasooriya R, Mishra U. 2017.** Exploring the spatial variability of soil properties in an alfisol soil catena. *Catena* **150**:53–61 DOI [10.1016/j.catena.2016.10.017](https://doi.org/10.1016/j.catena.2016.10.017).
- Russenes AL, Korsaeath A, Bakken LR, Dörsch P. 2016.** Spatial variation in soil pH controls off-season N₂O emission in an agricultural soil. *Soil Biology & Biochemistry* **99**:36–46 DOI [10.1016/j.catena.2016.10.017](https://doi.org/10.1016/j.catena.2016.10.017).
- Salehi MH, Esfandiarpour I, Sarshogh M. 2011.** The effect of aspect on soil spatial variability in Central Zagros, Iran. *Procedia Environmental Sciences* **7**:293–298 DOI [10.1016/j.proenv.2011.07.051](https://doi.org/10.1016/j.proenv.2011.07.051).
- Schindelbeck RR, Van Es HM, Abawi GS, Wolfe DW, Whitlow TL, Gugino BK, Idowu OJ, Moebius-Clune BN. 2008.** Comprehensive assessment of soil quality for landscape and urban management. *Landscape & Urban Planning* **88**(2–4):73–80 DOI [10.1016/j.landurbplan.2008.08.006](https://doi.org/10.1016/j.landurbplan.2008.08.006).

- Sheoran V, Sheoran AS, Poonia P. 2010.** Soil reclamation of abandoned mine land by revegetation: a review. *International Journal of Soil Sediment & Water* **3**:1–21.
- Shit PK, Bhunia GS, Maiti R. 2016.** Spatial analysis of soil properties using GIS based geostatistics models. *Modeling Earth Systems & Environment* **2**(2):1–6 DOI [10.1007/s40808-016-0160-4](https://doi.org/10.1007/s40808-016-0160-4).
- Silvia P, Escalante AE, Noguez AM, Felipe GO, Celeste MP, Cram SS, Eguiarte LE, Souza P. 2016.** Spatial heterogeneity of physicochemical properties explains differences in microbial composition in arid soils from Cuatro Ciénegas, Mexico. *PeerJ* **4**(9):e2459 DOI [10.7717/peerj.24](https://doi.org/10.7717/peerj.24).
- Stoyan H, De-Polli H, Böhm S, Robertson GP, Paul EA. 2000.** Spatial heterogeneity of soil respiration and related properties at the plant scale. *Plant & Soil* **222**(1–2):203–214 DOI [10.1023/A:1004757405147](https://doi.org/10.1023/A:1004757405147).
- Trangmar BB, Yost RS, Uehara G. 1986.** Application of geostatistics to spatial studies of soil properties. *Advances in Agronomy* **38**(1):45–94 DOI [10.1016/S0065-2113\(08\)60673-2](https://doi.org/10.1016/S0065-2113(08)60673-2).
- Tsui CC, Chen ZS, Hsieh CF. 2004.** Relationships between soil properties and slope position in a lowland rain forest of southern Taiwan. *Geoderma* **123**:131–142 DOI [10.1016/j.geoderma.2004.01.031](https://doi.org/10.1016/j.geoderma.2004.01.031).
- Turgut B, Öztaş T. 2012.** Assessment of spatial distribution of some soil properties with geostatistics method. *Ziraat Fakültesi Dergisi—Süleyman Demirel Üniversitesi* **7**(2):10–22.
- Vieira SR, Filho OG, Chiba MK, Cantarella H. 2009.** Spatial variability of soil chemical properties after coffee tree removal. *Revista Brasileira De Ciência Do Solo* **33**(5):1507–1514 DOI [10.1590/S0100-06832009000500041](https://doi.org/10.1590/S0100-06832009000500041).
- Wang Y, Shao M, Zhu Y, Liu Z. 2011.** Impacts of land use and plant characteristics on dried soil layers in different climatic regions on the Loess Plateau of China. *Agricultural & Forest Meteorology* **151**:437–448 DOI [10.1016/j.agrformet.2010.11.016](https://doi.org/10.1016/j.agrformet.2010.11.016).
- Wang HJ, Shi XZ, Yu DS, Weindorf DC, Huang B, Sun WX, Ritsema CJ, Milne E. 2009.** Factors determining soil nutrient distribution in a small-scaled watershed in the purple soil region of Sichuan Province, China. *Soil & Tillage Research* **105**(2):300–306 DOI [10.1016/j.still.2008.08.010](https://doi.org/10.1016/j.still.2008.08.010).
- Wang Y, Zhang X, Huang C. 2009.** Spatial variability of soil total nitrogen and soil total phosphorus under different land uses in a small watershed on the Loess Plateau, China. *Geoderma* **150**(1):141–149 DOI [10.1016/j.geoderma.2009.01.021](https://doi.org/10.1016/j.geoderma.2009.01.021).
- Wilding LP. 1985.** Soil spatial variability: its documentation, accommodation and implication to soil survey. In: Nielsen DR, Bouman J, eds. *Soil spatial variability*. Wageningen: Pudoc, 166–194.
- Yan LB, He RX, Kašanin-Grubin M, Luo GX, Peng H, Qiu JX. 2017.** The dynamic change of vegetation cover and associated driving forces in Nanxiong Basin, China. *Sustainability* **9**(3):443–457 DOI [10.3390/su903044](https://doi.org/10.3390/su903044).
- Yang J, Chen H, Nie Y, Zhang W, Wang K. 2016.** Spatial variability of shallow soil moisture and its stable isotope values on a karst hillslope. *Geoderma* **264**:61–70 DOI [10.1016/j.geoderma.2015.10.003](https://doi.org/10.1016/j.geoderma.2015.10.003).

- Yüksek T, Göl C, Yüksek F, Yüksel EE. 2009.** The effects of land-use changes on soil properties: the conversion of alder coppice to tea plantations in the humid northern blacksea region. *African Journal of Agricultural Research* **4**(7):665–674.
- Zaremehrjardi M, Taghizadehmehrjardi R, Akbarzadeh A. 2010.** Evaluation of geostatistical techniques for mapping spatial distribution of soil pH, salinity and plant cover affected by environmental factors in Southern Iran. *Notulae Scientia Biologicae* **2**(4):92–103.
- Zhang JH, Li Y. 2002.** Spatial variability of soil moisture on the hillslopes, southwestern China. *Archives of Agronomy & Soil Science* **48**(4):357–362 DOI [10.1080/036503402141](https://doi.org/10.1080/036503402141).
- Zhang C, Li W. 2010.** Regional-scale modelling of the spatial distribution of surface and subsurface textural classes in alluvial soils using Markov chain geostatistics. *Soil Use & Management* **24**(3):263–272 DOI [10.1111/j.1475-2743.2008.00165.x](https://doi.org/10.1111/j.1475-2743.2008.00165.x).
- Zhang Q, Yang ZP, Li Y, Chen DL, Zhang JJ, Chen MC. 2010.** Spatial variability of soil nutrients and GIS-based nutrient management in Yongji County, China. *International Journal of Geographical Information Science* **24**(7):965–981 DOI [10.1080/13658810903257954](https://doi.org/10.1080/13658810903257954).
- Zhao J, Dong Y, Xie X, Li X, Zhang XX, Shen X. 2011.** Effect of annual variation in soil pH on available soil nutrients in pear orchards. *Acta Ecologica Sinica* **31**(4):212–216 DOI [10.1016/j.chnaes.2011.04.001](https://doi.org/10.1016/j.chnaes.2011.04.001).
- Zhao BH, Li ZB, Li P, Xu G, Gao HD, Cheng YT, Chang EH, Yuan SL, Zhang Y, Feng ZH. 2017.** Spatial distribution of soil organic carbon and its influencing factors under the condition of ecological construction in a hilly-gully watershed of the Loess Plateau, China. *Geoderma* **296**:10–17 DOI [10.1016/j.geoderma.2017.02.010](https://doi.org/10.1016/j.geoderma.2017.02.010).
- Zhao FY, Wu FZ, Liu D. 2000.** Studies on the physical and chemical properties of the protected vegetable soils. *Soil and Fertilizer* **2**:11–23.
- Zucco G, Brocca L, Moramarco T, Morbidelli R. 2014.** Influence of land use on soil moisture spatial–temporal variability and monitoring. *Journal of Hydrology* **516**(6):193–199 DOI [10.1016/j.jhydrol.2014.01.043](https://doi.org/10.1016/j.jhydrol.2014.01.043).