

CASE IMAGE

A massive colorectal lithobezoar in a 32-year-old woman

Houssem Harbi^{1,2}  | Ahmed Bouzid¹ 

¹General Surgery Department - Habib Bourguiba Hospital, University of Sfax, Sfax, Tunisia

²Laboratory research LR21ES04, University of Sfax, Sfax, Tunisia

Correspondence

Houssem Harbi, Avenue Majida Boulila, Hopital Habib Bourguiba, Service de Chirurgie Générale, 3029, Sfax, Tunisia.
Email: houcem_harbi@hotmail.fr

Abstract

A 32-year-old female patient with a history of iron deficiency and mental retardation, presented with chronic constipation and painful defecation related to a massive colorectal lithobezoar. She was successfully treated with laxatives and daily rectal enema.

KEYWORDS

adult, lithobezoar, rectal enema

1 | CLINICAL IMAGE

A 32-year-old female patient with a history of iron deficiency and mental retardation, presented with chronic constipation and painful defecation for 1 month. Her parents reported also that she was eating stones for the last month.

On examination, she had an abdominal distension without a palpable mass. Digital rectal examination found several stony foreign bodies with watery stools.

The plain radiograph of the abdomen showed that both colon and rectum were entirely filled with radiopaque foreign bodies but with no air-fluid levels (Figure 1A). The abdominal CT scan found also that colon and rectum were

stuffed with hyperdense foreign bodies without bowel obstruction (Figure 1B,C,D).

Thanks to oral laxative and daily rectal enemas the patient evacuated almost all stones (varying in size from 1–3 cm) and other foreign bodies such as date nuts (Figure 1E). This was confirmed by an abdominal X-ray control (Figure 1F).

Pica is a rare abnormal eating behavior of non-nutritive substances. It is much more frequent in children than in adults.¹ Apart from pregnancy, this type of geophagy may be observed in adults with mental retardation or with psychiatric pathology, in particular schizophrenia.² A massive colorectal lithobezoar with intestinal obstruction as in our case is extremely rare in adults.

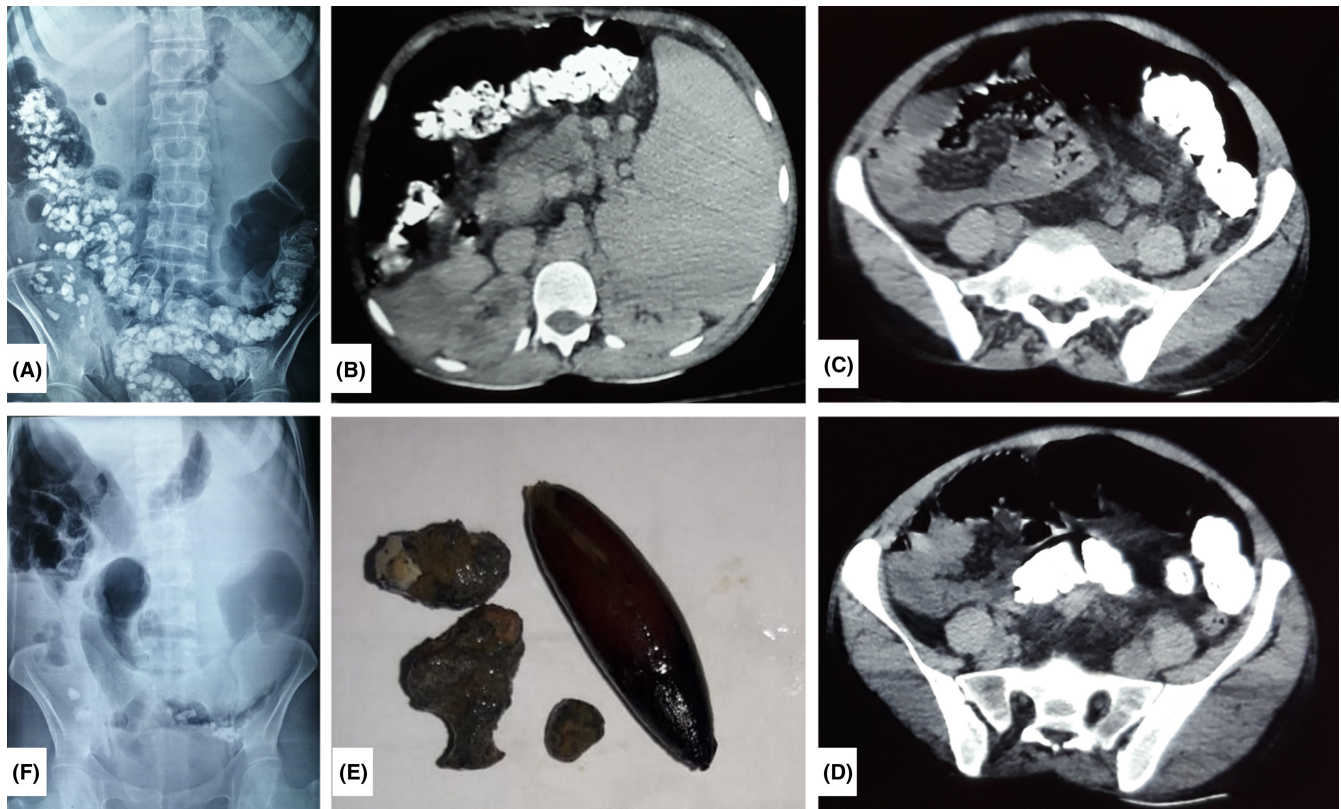


FIGURE 1 A—Abdominal X-ray showing colorectal massive filling with centimetric radiopaque foreign bodies. B,C,D—CT-scan axial views showing giant lithobezoar of the entire colon E—Centimetric stones and a date nut evacuated by the patient thanks to rectal enema F—Abdominal X-ray control (after 3 weeks of treatment) showing a subtotal clearing of the foreign bodies

AUTHOR CONTRIBUTIONS

Houcem Harbi wrote the initial draft, reviewed the literature, revised manuscript, and approved the final version. Ahmed Bouzid reviewed the literature and approved the final version.

ACKNOWLEDGEMENTS

None.

CONFLICT OF INTEREST

The authors declare that they have no conflict of interest.

DATA AVAILABILITY STATEMENT

Data openly available in a public repository that issues datasets with DOIs" cd_value_code="text

ETHICAL APPROVAL

Written informed consent was obtained from the patient parents. This case report did not receive any funding. The authors have access to all source data for this case report.

CONSENT

A written consent was obtained from the patient's next of kin (the patient has a mental retardation).

ORCID

Houssem Harbi  <https://orcid.org/0000-0003-1721-9845>

Ahmed Bouzid  <https://orcid.org/0000-0001-7831-9845>

REFERENCES

1. Aihole JS. Giant colonic Lithobezoar: a rare case report. *J Indian Assoc Pediatr Surg.* 2020;25(2):103-105. doi:10.4103/jiaps.JIAPS_24_19
2. Singh I, Singh P, Patkar P, Chaudhury S, Saldanha D. Geophagia: a case series. *Ind Psychiatry J.* 2021;30(Suppl. 1):S240-S242. doi: 10.4103/0972-6748.328819

How to cite this article: Harbi H, Bouzid A. A massive colorectal lithobezoar in a 32-year-old woman. *Clin Case Rep.* 2022;10:e06252. doi: [10.1002/ccr3.6252](https://doi.org/10.1002/ccr3.6252)