



Vitamin D Supplementation Could Enhance the Effectiveness of Glibenclamide in Treating Diabetes and Preventing Diabetic Nephropathy: A Biochemical, Histological and Immunohistochemical Study

Tarek Atia, PhD, MD^{1,2} , Mohammad Zahidul Iqbal, MD¹, Hassan Fathy Ahmed, MD², Hader I. Sakr, MD^{3,4}, M. H. Abdelzاهر, MD^{5,6}, Deaa Fekri Morsi, MD^{7,8}, and Mostafa E. Metawee, MD^{2,4}

Abstract

Diabetes mellitus is an oxidative stress-related disease characterized by hyperglycemia and a variety of complications, including nephropathy. Vitamin D has variable functions extending beyond the calcium metabolism to prevent oxidative tissue damage. We aimed to investigate whether vitamin D supplements could enhance Glibenclamide's effectiveness in treating diabetes and minimize the risk of associated pathology. Wistar rats were divided into normal control (n = 10) and diabetic (n = 30), where animals received two low doses of Streptozotocin 30 mg/kg/BW intraperitoneally to develop diabetes. The diabetic rats were then randomly divided into three equal groups: untreated, treated with Glibenclamide (0.6 mg/kg), and treated with Glibenclamide and Vitamin D3 (500 IU/kg). After eight weeks, the animals were sacrificed, and blood samples and kidney tissues were collected to evaluate biochemical, anti-oxidant, and pro-inflammatory cytokine levels and histological and immunohistochemical changes. Diabetic animals had significantly increased fasting blood glucose, lipid profile, blood urea, serum creatinine, and Malondialdehyde levels, whereas serum insulin, albumin, and the anti-oxidant enzymes superoxide dismutase and catalase were significantly decreased compared to normal control (p < 0.01). Furthermore, some renal histological changes were observed together with significantly increased immunoreactivity of anti-p53, anti-TNF- α , and anti-IL-6 antibodies when compared to the normal control. All abnormal parameters improved significantly with Glibenclamide therapy (p < 0.01), but combination therapy with vitamin D produced a much better result. In conclusion, vitamin D supplementation along with anti-diabetic medication can help prevent or reduce the severity of diabetic nephropathy due to its potent antioxidant, anti-inflammatory, and anti-apoptotic properties.

Keywords

Vitamin D, Glibenclamide, Diabetic Nephropathy, Antioxidant, Inflammatory cytokines

Received November 9, 2021. Received revised June 6, 2022. Accepted for publication July 10, 2022.

¹ Department of Medical Laboratory Sciences, College of Applied Medical Sciences, Prince Sattam bin Abdulaziz University in Al-Kharj, Saudi Arabia

² Department of Histology and Cytology, Faculty of Medicine, Al-Azhar University, Cairo, Egypt

³ Department of Medical Physiology, Faculty of Medicine, Cairo University, Egypt

⁴ Medicine Program, Batterjee Medical College, Jeddah, Saudi Arabia

⁵ Department of Medical Biochemistry, Faculty of Medicine, Al-Azhar University, Assiut, Egypt

⁶ Faculty of Medicine, Prince Sattam Bin Abdulaziz University in AlKharj, Saudi Arabia

⁷ Department of Pathology, Faculty of Medicine, Helwan University, Cairo, Egypt

⁸ Pathology lab., Prince Sattam bin Abdulaziz University Hospital in Al-Kharj, Saudi Arabia

Corresponding Author:

Tarek Atia, College of Applied Medical Sciences, Prince Sattam bin Abdulaziz University in Alkharj, Saudi Arabia; Faculty of Medicine, Al-Azhar University, Cairo, Egypt.
Email: t.mohamed@psau.edu.sa



Introduction

Diabetes mellitus (DM) is a chronic inflammatory and metabolic disorder characterized by hyperglycemia. Diabetes affects more than 400 million people worldwide, with a marked rise in incidence.¹ On the other hand, chronic hyperglycemia induces oxidative stress, which can result in defective insulin secretion, impaired insulin gene expression, and increased tissue apoptosis. Increased oxidative stress in diabetics is responsible for the majority of diabetic complications including nephropathy.²

Diabetic nephropathy (DN) is the leading cause of end-stage renal failure worldwide, as well as the leading risk factor for developing macrovascular disorders.³ The prevalence of DN is approximately 30% for patients with type-I diabetes and ranges from 20% to 50% for patients with type-II diabetes.⁴ However, many factors and pathways play a role in the pathogenesis of DN. Chronic hyperglycemia can result in a variety of cellular and molecular changes that affect the glomerular blood capillaries as well as tubular structure and function.⁵ Hyperglycemia produces excess reactive oxygen species (ROS) and reduces the anti-oxidant potential resulting in oxidative damage to lipids, proteins, and DNA, with possible changes in the structure and function of these molecules. This will stimulate the immune system and help release inflammatory mediators and cytokines that promote the initiation and progression of tissue damage and apoptosis throughout the body, including the kidneys.^{6,7}

Additionally, the accumulation of lipid peroxidation products, advanced glycation end products, and damaged DNA contributes to most diabetic complications. In the absence of an adequate compensatory response from the endogenous anti-oxidant network to glucotoxicity and lipotoxicity induced by hyperglycemia and hyperlipidemia, oxidative stress is exaggerated, resulting in activation of the stress-sensitive intracellular signaling pathways.⁸ As a result, oxidative stress reduction and stress-sensitive signaling pathways were investigated to treat diabetes and diabetic complications. Malondialdehyde (MDA), on the other hand, is a commonly used lipid peroxidation marker for oxidative stress. At the same time, living organisms have evolved several protective anti-oxidant enzymes against ROS toxicity, such as superoxide dismutase (SOD), catalase (CAT), and many others.⁹

Vitamin D is a fat-soluble secosteroid that acts as a prohormone to regulate bone mineralization. Vitamin D is found mainly in vitamin D2 (ergocalciferol) and vitamin D3 (cholecalciferol). Vitamin D can be synthesized endogenously through ultraviolet solar radiation and obtained from a limited number of dietary sources.¹⁰ Beyond calcium metabolism and bone mineralization, vitamin D regulates cell proliferation and differentiation,¹¹ protects multiple tissue organs from oxidative damage,¹² and acts as a transcriptional regulator factor for many genes.¹³ Vitamin D first binds to the Vitamin D Receptors (VDR), a type of nuclear receptor family member expressed in nearly all body cells that regulate a variety of biological processes.¹⁴ VDR is highly expressed in pancreatic B-cells, implying that vitamin D plays a vital role in regulating the risk of diabetes.¹⁵

Diabetes management is increasingly focusing on preventing diabetes-related complications. However, managing diabetes without side effects remains a significant challenge. Anti-diabetes therapy aims to reduce near-normal blood glucose levels, but free radicals pose an additional challenge.¹⁶ Diabetes medications, such as insulin, glibenclamide, and others, can effectively treat hyperglycemia but cannot prevent diabetic complications.¹⁷ The current study aims to investigate whether vitamin D supplementation could enhance Glibenclamide's effectiveness in treating diabetes and minimize the risk of associated pathology such as dyslipidemia, oxidative stress tissue damage, and nephropathy in experimentally induced DN in rats.

Materials and Methods

- **Animals:** The current study employed forty male Wistar rats weighing 200 - 220 g from our university's Lab Animal Care Unit at the Pharmacy College. Animals have been treated following the Guide for the Care and Use of Laboratory Animals (eighth edition, National Academies Press), and the experimental protocol was established and approved by the University Bioethical Research Committee (**BERC-001-09-20**). Rats were kept under observation for 15 days before the start of the experiment to allow for adaptation and to rule out any concurrent infections, after which they were weighed and included in the study. Animals were housed in standard plastic cages (2 rats/cage), with well-aerated covers at standard temperature ($25 \pm 5^\circ\text{C}$) and relative room humidity of 50–60% with 12-h light/dark cycles. Free access to water and feed was provided to rats throughout the study period (8 weeks).
- **Animal grouping:** The animals under study were randomly divided into two main groups:
 - **The normal control (NC) group:** 10 normal rats were fed a standard rodent diet (6.5% kcal fat) and injected twice intraperitoneally (IP) with 30 mg/kg/BW of 0.1 M citrate buffer (pH:4.5) at 24-h intervals.
 - **The diabetic group:** Thirty animals were fed a high-fat diet (60% kcal fat) for two weeks. They were then injected with two low doses of Streptozotocin (STZ) 30 mg/kg/BW in 0.01 M citrate buffer intraperitoneally (IP) at 24-h intervals (STZ; Sigma, St. Louis, USA). Fasting blood glucose (FBG) level was measured by glucometer three days later to confirm diabetes. Animals with FBG levels of ≥ 250 mg/dL were included in the study as diabetics,¹⁸ whereas nephropathy was confirmed by increasing serum levels of urea and creatinine.¹⁹

The diabetic rats were then randomly subdivided into three groups of ten each.

- **The diabetic control (DC):** diabetic rats without further treatment.

- **Diabetic GLB-treated (D-GLB):** Diabetic rats were given 0.6 mg/kg/BW of Glibenclamide (GLB), an oral hypoglycemic drug, via oro-gastric gavage daily throughout the experiment; Sigma Aldrich Co. (St. Louis, MO, USA).²⁰
 - **Diabetic rats treated with GLB + Vitamin D3 (D-GLB-VD3):** Diabetic rats were given daily 0.6 mg/kg/BW GLB and 500 IU/kg BW Vitamin D3; Sigma-Aldrich Co. (St. Louis, MO, USA), in corn oil via oro-gastric gavage throughout the experiment as previously described by Alrefaie and Alhayanib.²¹
 - **Body Weight:** The rats' body weight was measured on the first and last days of the experiment. The percentage change in the body weight was calculated.
 - **Blood sampling:** Blood was drawn from the tail veins and tested for biochemical and oxidative stress markers, and pro-inflammatory cytokines.
 - **Biochemical Markers:**
 - Fasting blood glucose (FBG) was measured after 12 h of fasting using a One-Touch Ultra glucose meter (Life Scan, Milpitas, CA, USA). Serum insulin was measured using rat-specific Enzyme-linked immune sorbent assay (ELISA) commercial kits (DRG International Inc, USA). In addition, blood urea, serum creatinine, total serum cholesterol (TC), serum triglycerides (TG), and serum albumin were measured by using commercially available test kits.
 - **Anti-Oxidant Stress Parameters and pro-Inflammatory Cytokines in the Kidney Tissue:**
 - **Preparation of kidney tissue homogenate:** After the rats were sacrificed, the right kidneys were dissected and used for microscopic study. The left kidneys were extracted, washed in cold isotonic saline, dried with filter paper, and weighed. The kidneys were then minced and homogenized in an ice potassium phosphate buffer (0.1 M, pH 7.4). Homogenates were centrifuged for 20 min at 3000/min to remove tissue residues; supernatants were extracted, and protein content was measured. The supernatants were kept frozen at -20°C until they were used to measure the following: -
 - **The oxidative stress parameters:** Superoxide Dismutase (SOD), Catalase (CAT), and Malondialdehyde (MDA), the lipid peroxidation end product, were measured by using SOD (ab 65354), CAT (ab 83464), and MDA (ab 118970) Colorimetric Assay Kits from Abcam, USA according to the manufacturer's instructions. The enzyme activities of SOD and CAT are expressed as U/mg, and MDA levels are expressed as nmol/g.
 - **Pro-inflammatory cytokines:** Interleukin-6 (IL-6) and Tumor Necrosis Factor Alpha (TNF- α) levels were estimated in the kidney homogenate according to Sha *et al*²² by Enzyme-Linked Immunosorbent Assay (ELISA) using the commercial kits [Rat IL-6 ELISA Kit (ab100772), and Rat TNF- α ELISA kit (ab100785), Abcam, USA] according to the manufactures protocol and results are expressed as pg/mg protein.
 - **Tissue preparation for histological studies:** After eight weeks, animals were sacrificed after being anesthetized with IP injection of ketamine (50 mg/kg) along with xylazine (30 mg/kg).²³ Kidney tissues were then dissected, fixed in 10% neutral-buffered formalin, processed, and embedded in paraffin.
 - **Stain for histological changes:** The 4 μm thick paraffin sections were mounted on a glass slide, deparaffinized, dehydrated, and stained with the following according to the manufacturer's protocols: -
 - Haematoxylin and Eosin (H&E) stain; Scytek Laboratories SDP Hematoxylin-Eosin Stain Kit (Catalog No. NC0510871).
 - Periodic Acid Schiff (PAS); Diagnostic BioSystems CA, Stain Kit (Catalog No. 027)
 - Masson's trichrome stain; Thermo ScientificTM Richard-Allan ScientificTM Masson Trichrome Kit (Catalog No. 22-110-648).
- Two independent observers examined the kidney tissues blindly to detect the histological changes.
- Immunohistochemical reactions to evaluate apoptosis and pro-inflammatory cytokines (IL-6 and TNF- α) in kidney tissue sections: The expression of anti-p53 antibody (for apoptosis), anti-IL-6 antibody, and anti-TNF- α antibody were investigated in formalin-fixed, paraffin-embedded 4 μm thick kidney tissue sections. Kidney tissue sections were deparaffinized, rehydrated. An antigen-retrieval procedure was then performed by heating the slides in 10 mM sodium citrate buffer solution (pH 6.0) in the microwave for 15 min. Sides were then incubated in hydrogen peroxide (H₂O₂) to block endogenous peroxidase, then the slides were incubated with primary antibodies [Anti-p53 antibody [(BP 53.12): sc-81168] (Santa Cruz Biotechnology Inc, Santa Cruz, CA, USA). Anti-IL-6 polyclonal antibody (ab6672), Abcam, USA. Anti-TNF- α monoclonal antibody (ab6671), Abcam USA] diluted in bovine serum albumin at 4 $^{\circ}\text{C}$ overnight. Slides were washed three times in PBS, then incubated with appropriate secondary antibodies for one hour, counterstained, and examined.
- The stained sections were examined microscopically, and the results were interpreted accordingly. The expression pattern was blindly evaluated in five non-overlapping fields/sections in five serial sections/rat. The stained sections were graded based on staining intensity and number of stained cells, with 0 representing no staining/expression, 1 representing weak but detectable (>25%) staining, 2 representing moderate staining (25-50%), and 3 representing intense or high staining (>75%).²⁴
- **Statistical analysis:** All data were expressed as the mean \pm SD. ANOVA (one-way analysis of variance) and a post hoc test were used for group comparisons. P-values < 0.05 were considered statistically significant for a two-tailed test.

Results

- **Evaluation of the bodyweight:** At the end of the experiment, diabetic untreated rats lost significantly (p < 0.05)

Table 1. Demonstrates the Body Weight and the Biochemical Parameters in all Study Groups. Values Indicate Mean \pm Standard Deviation of the Mean (SDM) of ten Rats per Group.

	NC (Group I)	DC (Group II)	D-GLB (Group III)	D-GLB-VD3 (Group V)
Body Weight (g)	374 \pm 6.22	264.33 \pm 3.4*	355.67 \pm 4.61 [#]	376.67 \pm 11.84 ^{##}
FBG (mg/dL)	96.73 \pm 5.75	255.37 \pm 12.1**	138.16 \pm 2.41 ^{###}	128 \pm 3.83 ^{###}
Plasma Insulin (μ U/ml)	15.27 \pm 1.25	5.62 \pm 0.56**	11.56 \pm 1.01 ^{###}	13.68 \pm 0.96 ^{###}
Triglycerides (mg/dl)	63.83 \pm 6.42	111.08 \pm 5.64**	88.62 \pm 4.96 ^{###}	71.87 \pm 3.42 ^{###}
Total cholesterol (mg/dl)	117.23 \pm 5.34	172.46 \pm 2.52**	127.13 \pm 4.93 ^{###}	119.95 \pm 1.77 ^{###}
Serum Albumin (g/dl)	4.28 \pm 0.21	2.77 \pm 0.15**	3.87 \pm 0.14 [#]	4.03 \pm 0.07 [#]
Blood urea (mg/dl)	37.76 \pm 3.1	65.09 \pm 3.78**	58.44 \pm 4.25 [#]	41.15 \pm 2.21 [#]
Serum Creatinine (mg/dl)	0.998 \pm 0.042	1.23 \pm 0.039**	1.15 \pm 0.03 [#]	1.003 \pm 0.028 [#]

NC: Normal Control, DC: Diabetic Control, D-GLB: Diabetic treated with Glibenclamide, D-GLB-VD3: Diabetic treated with Glibenclamide supplemented with Vitamin D3, FBG: Fasting Blood Glucose.

* P < 0.05: compared to the normal control values.

**P < 0.01: compared to the normal control values.

[#]P < 0.05: compared to the diabetic control values.

^{###}P < 0.01: compared to the diabetic control values.

Table 2. Demonstrates Oxidative Stress and pro-Inflammatory Biomarkers in the Kidney Tissue Homogenates of the Studied Groups. Values Indicate Mean \pm Standard Deviation of the Mean (SDM) of ten Rats per Group.

	NC (Group I)	DC (Group II)	D-GLB (Group III)	D-GLB-VD3 (Group V)
MDA (nmol/g)	4.9 \pm 0.41	12.81 \pm 2.69**	9.6 \pm 2.37 [#]	6.08 \pm 1.29 ^{##}
SOD (U/mg protein)	103.9 \pm 5.84	73.63 \pm 3.79**	83.8 \pm 3.08 [#]	94.95 \pm 4.01 ^{###}
CAT (U/mg protein)	51.76 \pm 2.92	22.76 \pm 2.75**	37.6 \pm 3.27 [#]	49.27 \pm 2.97 ^{###}
TNF- α (pg/mg protein)	35.1 \pm 2.83	99.79 \pm 5.45**	49.1 \pm 3.98 ^{##}	40.93 \pm 3.61 ^{###}
IL 6 (pg/mg protein)	37.76 \pm 2.87	89.3 \pm 4.55**	52.44 \pm 6.2 ^{###}	43.59 \pm 3.88 ^{###}

NC: Normal Control, DC: Diabetic Control, D-GLB: Diabetic treated with Glibenclamide, D-GLB-VD3: Diabetic treated with Glibenclamide supplemented with Vitamin D3, FBG: Fasting Blood Glucose.

* P < 0.05: compared to the normal control values.

**P < 0.01: compared to the normal control values.

[#]P < 0.05: compared to the diabetic control values.

^{###}P < 0.01: compared to the diabetic control values.

more weight than normal control rats. The bodyweight of the GLB- and GLB/vitamin D-treated rats increased significantly ($p < 0.05$) compared to the diabetic untreated group, with better body weight results for GLB/vitamin D- than GLB-treated rats (Table 1).

• Evaluation of Biochemical parameters:

- **Fasting blood glucose (FBG) and plasma insulin (Table 1):** Our results demonstrated a significantly increased ($p < 0.01$) FBG level and a significantly decreased ($p < 0.01$) serum insulin level in diabetic untreated rats compared to the normal control group. After 8 weeks of treatment, GLB- and GLB/vitamin D-treated rats, on the other hand, displayed a significant reduction ($p < 0.01$) in FBG associated with significantly increased ($p < 0.01$) plasma insulin levels compared to diabetic rats, with better results of GLB/vitamin D- than GLB-treated rats.

- **Serum total cholesterol (TC), and triglycerides (TG) levels (Table 1):** Our results showed a significant increase ($p < 0.01$) in serum TC and TG in diabetic untreated animals compared to normal control. After 8 weeks of treatment, GLB- and GLB/vitamin D-treated animals showed a significant decrease ($p < 0.01$) in TC

and TG levels compared to diabetic untreated rats, with better results for GLB/vitamin D- than GLB-treated rats.

- **Kidney function tests:** As shown in Table 1, diabetic untreated animals had impaired renal functions evidenced by a significant increase in blood urea ($p < 0.01$), serum creatinine ($p < 0.05$), and a significant decrease ($p < 0.01$) in serum albumin compared to normal control rats. After 8 weeks of treatment, GLB- and GLB/vitamin D-treated animals had improved renal functions, evidenced by a significant decrease ($p < 0.05$) in blood urea and serum creatinine and a significant increase ($p < 0.05$) in serum albumin compared to diabetic untreated rats, with better results of GLB/vitamin D- than GLB-treated rats.
- **Oxidative stress and pro-inflammatory markers:** Table 2 displayed the oxidative stress and the pro-inflammatory markers in the kidney tissue homogenates and representing that SOD and CAT levels were significantly decreased ($p < 0.01$), whereas MAD was significantly increased ($p < 0.01$) in diabetic untreated rats compared to normal control. Furthermore, levels of SOD and CAT were significantly increased in the GLB-treated ($p < 0.05$) and GLB/vitamin D-treated ($p < 0.01$) animals, whereas levels of MAD decreased significantly in both groups, as compared to

diabetic untreated rats, with even better results in the GLB/vitamin D-treated rats versus the GLB-treated rats.

Additionally, TNF- α and IL-6 levels in diabetic untreated animals were significantly higher ($p < 0.01$) than in normal controls. Moreover, GLB- and GLB/vitamin D-treated animals had significantly lower ($p < 0.01$) levels of TNF- α and IL-6 compared to diabetic untreated animals, with better results for GLB/vitamin D- than GLB-treated rats.

- **Histological results (Figure 1):** The kidney tissue sections of the diabetic untreated group showed glomerular and tubular histological changes including glomerulosclerosis, mesangial expansion, tubular dilatation, and tubular atrophy (as demonstrated by H&E staining). In addition,

there is extracellular matrix deposition (as shown by PAS stain), and mild interstitial fibrosis (as shown by Masson trichrome stain). Meanwhile GLB- treated animals showed considerable improvements in their histological changes, but GLB/vitamin D-treated animals showed more improvement than animals treated with glibenclamide alone.

- **Immunohistochemical results (Figure 2):** Immunohistochemical staining of kidney tissue sections for pro-inflammatory cytokine, (IL-6, TNF- α), and apoptotic protein (p53) showed weak expression in normal control rats, but it was strongly increased in diabetic untreated animals. Furthermore, the expression was moderately increased in the GLB-treated group but weak in the GLB/vitamin-D treated animals.

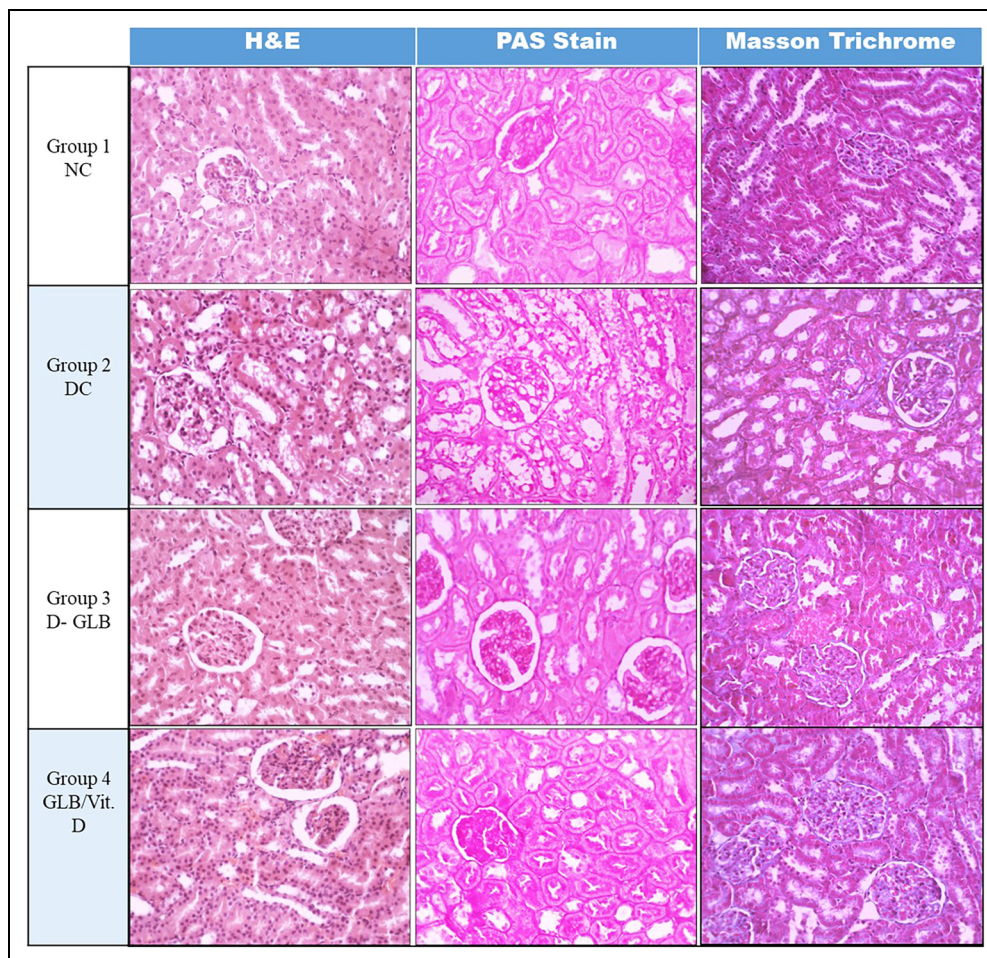


Figure 1. Photomicrographs of histologically stained kidney tissue sections showing. Haematoxylin and Eosin stained sections show the following: First, the normal histological structure of glomerulus and tubules, in normal control group. Second, glomerulosclerosis, tubular dilatation, and atrophy in the diabetic control group. Third, mild glomerulosclerosis, with mild tubular atrophic changes in the GLB-treated group. Finally, minimal glomerulosclerosis, and mild tubular dilatation in the Diabetic group treated with GLB/vitamin D-treated diabetic group (X 400). Periodic Acid-Schiff (PAS)-stained sections show the following: First, normal morphology of glomerulus and tubules in the control group. Second, in the diabetic control group, expanded mesangial matrix, and extended tubules in the diabetic control group. Third, the GLB-treated group experienced mild restoration of pathological changes. Finally, there was near normal renal tissue in the diabetic group treated with GLB/vitamin D. (X 400). Masson trichrome stained sections show the following: First, normal morphology of glomerulus and tubules in the control group. Second, the expanded mesangial matrix, and mild interstitial fibrosis in the Diabetic control group. Third, mild restoration of the expanded mesangial matrix in the glomerular area and minimal interstitial fibrosis in the GLB-treated diabetic group. Finally, the near-normal mesangial matrix in the glomerular area, and no interstitial fibrosis, in the diabetic group treated with GLB/vitamin D (X 400).

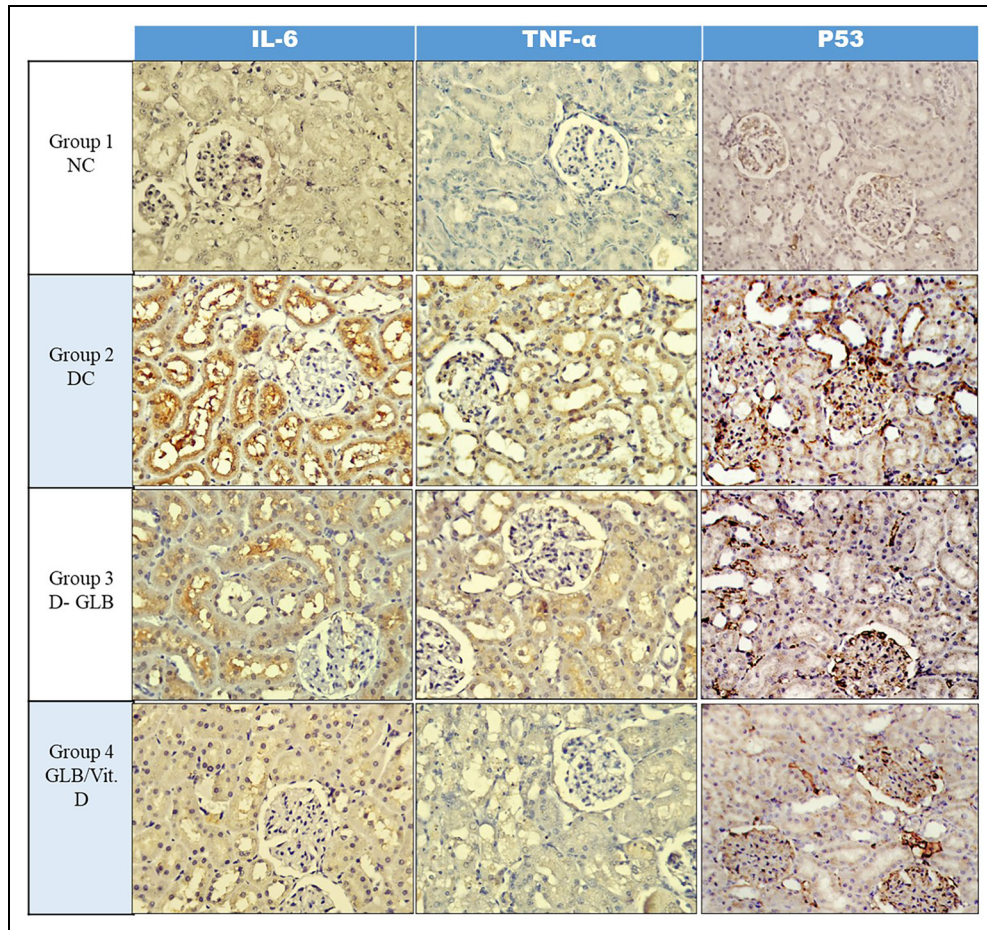


Figure 2. Photomicrographs of immunohistochemical reactivity in kidney tissue sections showing. Immunohistochemical expression of IL-6 and TNF- α showing a weak expression (~25% of cells) in the normal group, marked expression (~75% of cells) in the diabetic control group, mild expression (~50% of cells) in Glibenclamide treated group, and finally a weak expression (~25% of cells) in the diabetic group treated with Glibenclamide and Vit D3 (X 400). Immunohistochemical expression of P53 showing weak nuclear staining (~25% of cells) in the normal group, marked nuclear staining (~75% of cells) in the diabetic control group, mild nuclear staining (~50% of cells) in the Glibenclamide group weak nuclear staining (~25% of cells) in the diabetic group treated with Glibenclamide and Vit D3 (X 400).

Discussion

Diabetes induced by STZ injection is associated with pancreatic β -cells dysfunction, which results in decreased insulin secretion and hyperglycemia. Chronic hyperglycemia contributes to carbohydrates, protein, and lipid metabolism defects and impaired kidney function and structure.²⁵ The current study showed that diabetic rats had significantly lower body weight, plasma insulin, and serum albumin levels but significantly higher blood glucose, TC, TG, blood urea, and serum creatinine levels compared to control rats. In kidney tissue homogenates, diabetic rats had significantly lower levels of oxidative stress markers and significantly higher levels of MAD and inflammatory cytokines. Furthermore, the diabetic kidney tissue sections had significant pathological changes associated with the over-expression of inflammatory cytokines (IL-6 and TNF- α) and p53 (for apoptosis). Our results were consistent with previously reported data.²⁵⁻²⁹

GLB-treated diabetic animals had a significant decrease in FBG compared to diabetic control values. GLB is an anti-

diabetic medication that has long been used to lower blood glucose levels through various mechanisms; GLB stimulates pancreatic β -cells binding to the sulfonylurea receptor-1, blocks K^+ ATP-sensitive channels that cause membrane depolarization, and opens the Ca^{++} voltage-dependent channels. This, in turn, increases the intracellular calcium influx and promotes insulin secretion, raising blood insulin levels while decreasing glucose levels.³⁰ GLB also reduces hepatocyte glucose synthesis, which lowers blood glucose levels.³¹ On the other hand, the diabetic GLB-treated group supplemented with vitamin D showed more decreases in the FBG and increased insulin levels than the diabetic GLB-treated animals. This was consistent with the findings of Hassan *et al*,³² who reported that vitamin D improves insulin secretion by stimulating VDR on pancreatic β -cells. Vitamin D also improves insulin sensitivity by increasing the expression of insulin receptors and promoting the expression of the peroxisome proliferator-activated receptor (PPAR), a nuclear receptor involved in lipid and glucose metabolism.²³ Furthermore, vitamin D can indirectly improve insulin

secretion by normalizing extracellular calcium and maintaining normal intracellular calcium influx.³³

Compared to the normal control, diabetic rats had a significant increase in serum cholesterol and triglycerides. Furthermore, serum cholesterol and triglyceride levels decreased significantly in GLB- and GLB/vitamin D-treated diabetic groups than in the diabetic untreated animals, which was consistent with previous studies.^{34,35} GLB has a hypolipidemic effect by inhibiting or reducing cholesterol biosynthesis, reducing fatty acid synthesis, and/or promoting the formation of triglyceride precursors such as acetyl CoA and glycerol phosphate.²⁵ On the other hand, Vitamin D can improve hyperlipidemia either indirectly by stimulating VDR, which helps in reducing acetylated low-density lipoprotein cholesterol uptake, or directly by stimulating lipogenesis through the activation of lipoprotein lipase in adipocytes.³⁶ In addition, vitamin D stimulates calcium absorption from the small intestine to maintain serum calcium levels, increasing tissue fat oxidation. Furthermore, VDR overexpression reduces lipid catabolism and promotes lipogenesis pathways, and improves adipocyte differentiation and proliferation.³⁷

Blood urea and serum creatinine levels improved significantly in the GLB treated diabetic and GLB-treated with vitamin D supplemented diabetic groups compared to the diabetic untreated group in this study. Studies have shown that treating diabetic animals with GLB,²⁷ or vitaminD³⁸ significantly improved the kidney functions such as blood urea and serum creatinine levels. In addition, Gembillo *et al*³⁹ reported that Vitamin D supplementation has been shown to reduce proteinuria, improve glomerular filtration rate, and preserve the renal structure. Whereas, Wang *et al*⁴⁰ found that vitamin D supplementation significantly reduced blood urea but not serum creatinine in diabetic patients with chronic kidney diseases.

Diabetes is associated with inflammation, an increase in the production of free radicals and reactive oxygen species (ROS), as well as a decrease in anti-oxidants, and an increase in lipid peroxidation. All of which are involved in the pathogenesis and prognosis of most diabetic complications, including DN.^{32,41} Lipid peroxidation is a reaction between ROS and lipids that results in oxidative damage to cellular membrane lipids. Malondialdehyde, MDA, the end product of lipid peroxidation, is used to assess oxidative stress.⁴² In our study, antioxidant enzymes such as SOD and CAT were significantly decreased in diabetic untreated rats compared to normal controls, whereas MDA was significantly increased. These findings were consistent with the findings of Chandirasegaran *et al*.⁴³ GLB treatment significantly increased anti-oxidant defense (SOD and CAT) while decreasing MDA in diabetic animals. Our findings agreed with previously published studies.^{17,44} We hypothesized that because GLB has low anti-oxidant activity, it cannot completely reverse kidney oxidative tissue damage. Furthermore, Vitamin D supplementation with GLB significantly improved the SOD and CAT and decreased lipid peroxidation (MDA), which agreed with the result of Hassan *et al*.³² Vitamin D can reduce oxidative stress by reducing hyperglycemia, the leading cause of oxidative stress in diabetes.

Vitamin D can also protect cell membranes from ROS-induced damage.⁴⁵

In the current study, the expression of inflammatory cytokines, IL-6 and TNF- α , was increased significantly in renal tissue homogenates as well as renal tissue sections, indicating the role of these cytokines in the pathogenesis and prognosis of DN. It has been reported that the level of IL-6 and TNF- α in DN patients' serum and renal tissues were significantly higher than in diabetics without nephropathy.⁴⁶ Furthermore, there was a direct correlation between over-expression of IL-6 in renal tissue and the incidence of renal pathology and albuminuria, indicating that IL-6 is involved in the pathogenesis of DN.²² TNF- α can also cause ROS to be produced in various renal cells, including mesangial cells, resulting in glomerular capillary permeability disturbances and albuminuria.⁴⁷ The findings confirm the role of inflammatory cytokines (IL-6 and TNF- α) in DN development.

Treatment of diabetic animals with GLB alone or in combination with Vit-D resulted in a significant reduction in the levels of inflammatory cytokines (IL-6 and TNF- α) in both renal tissue homogenates and renal tissue sections. Zakhary and colleagues⁴⁸ recently reported that short-term vitamin D3 supplementation could protect diabetic patients from diabetic complications and improve proteinuria. Several studies have also found that vitamin D supplementation reduces pro-inflammatory cytokines such as IL-1 β , IL-2, IL-6, interferon- γ (IFN- γ), and TNF- α .^{49,50}

Diabetic nephropathy is characterized by thickened basement membranes, tubule degeneration, necrosis, loss of podocytes,⁵¹ mesangial enlargement, hypertrophy, interstitial cell infiltration,⁵² inflammatory cell infiltration, dilation of tubules, as well as glomerular deterioration and atrophy.⁵³ Our results showed most of these findings. Hyperglycemia stimulates the expression of transforming growth factor-1 (TGF-1) in renal mesangial cells, which increases the synthesis and cross-linking of extracellular matrix, resulting in glomerulosclerosis and interstitial fibrosis.⁵⁴ In addition, ROS can activate the STAT kinases JAK2 and TYK2. JAK/STAT signaling activation promotes the growth and proliferation of renal mesangial cells, which contributes to DN.⁵⁵ On the other hand, insulin deficiency activates IGF-1 and IGF-1R expression in renal mesangial cells and increases cell proliferation, fibronectin, and collagen IV synthesis, all of which contribute to DN.⁵⁶ TNF- α , on the other hand, has been shown to have a cytotoxic effect on renal tissues, causing apoptosis, necrosis, and changes in intraglomerular blood flow and glomerular filtration rates. TNF- α is also involved in the development of renal hypertrophy and hyperfunction, which are early renal changes involved in the pathogenesis of DN.⁴⁷

GLB and GLB/vitamin D treatment resulted in a considerable reduction in glomerulosclerosis, cellular infiltration, and interstitial fibrosis, with better results in the case of the GLB/vitamin D combination. Tian *et al*²⁷ indicated that GLB could protect against diabetic complications by inhibiting the Notch/Snail1 signaling pathway, accelerating the anti-oxidant potential, and preventing renal fibrosis. In contrast, Ioannidis⁵⁷ indicated that the

kidney metabolizes GLB inefficiently, resulting in an accumulation of non-metabolized products with impaired renal functions and/or incomplete recovery of diabetic renal pathological changes. Vitamin D supplementation has been shown to protect against DN through several mechanisms, including decreased oxidative stress, improved glucose tolerance, and insulin secretion regulation. Furthermore, vitamin D has been shown to protect against cytokine-induced apoptosis⁵⁰ and inhibit JAK/STAT signaling and reduce TGF-1, IGF-1, and IGF-1R expression in renal mesangial cells, preventing renal tissue fibrosis and podocytes' damage and preserving renal structure. Furthermore, vitamin D can activate anti-oxidant enzymes by stimulating the synthesis of metal ion protein carriers such as Zn and Cu, which act as cofactors to activate various enzymes, including anti-oxidant enzymes.^{55,58}

Conclusion

Hyperglycemia, oxidative stress, and inflammatory cytokines were found to be responsible for pathological changes in renal tissues, abnormal biochemical parameters, and apoptosis in diabetic animals. Many studies, however, have found that hyperglycemia is a significant risk factor for the production of ROS, which stimulates the release of inflammatory cytokines and causes renal tissue damage and apoptosis. Ordinary anti-diabetes medication, such as Glibenclamide, had a significant effect in reducing blood glucose levels, improving the biochemical parameters, histological changes, and apoptosis, but at higher levels than normal. As a result, we hypothesized that controlling hyperglycemia would be ineffective in preventing diabetic complications. Furthermore, Glibenclamide has mild antioxidant and anti-inflammatory properties that cannot prevent diabetic complications.

However, several animal experiments and human case-control studies have suggested that vitamin D may play a protective role in diabetic complications. Because of its potent antioxidant and anti-inflammatory properties, vitamin D acts as a diabetes risk modifier. The current study found that combining Glibenclamide and vitamin D therapy was more effective in reducing apoptosis and improving the biochemical, histological, and immunohistochemical renal changes associated with diabetes to near-normal levels. As a result, combined therapy is critical in preventing diabetes-related inflammatory and oxidative stress-induced renal tissue injury.

Acknowledgments

The authors would like to thank the Deanship of Scientific Research at Prince Sattam bin Abdulaziz University, Alkharj, Saudi Arabia, for the assistance.

Authors' Contributions

TA, HIS, MHA and MEE all contributed to the experimental design, data interpretation, and writing of the manuscript. MZI, HFA, DFM, MEA and MEE collaborated on the practical portion and data interpretation. MZI and HIS contributed to the statistical analysis. All authors contributed to the final revision.

Ethical Approval

The experimental protocol was established and approved by the University Bioethical Research Committee (BERC-001-09-20) at Prince Sattam University, KSA.

Declaration of Conflicting Interests

The author(s) declared no potential conflicts of interest with respect to the research, authorship, and/or publication of this article.

Funding

There was no fund for this work, the work was completely financially supported by the authors.

ORCID iD

Tarek Atia  <https://orcid.org/0000-0001-8236-5051>

References

- Goswami R, Nair A. Diabetes mellitus, vitamin D & osteoporosis: insights. *Indian J Med Res.* 2019;150(5):425-428.
- Tchamgoue AD, Tchokouaha LRY, Tsbang N, Tarkang PA, Kuate JR, Agbor GA. Costus afer protects cardio-, hepato-, and reno-antioxidant Status in streptozotocin-intoxicated wistar rats. *Biomed Res Int.* 2018;2018:1-9, 4907648.
- Chen Y, Lee K, Ni Z, He JC. Diabetic kidney disease: challenges, advances, and opportunities. *Kidney Dis.* 2020;6:215-225.
- Zhang M, Liu T, Li W, et al. Efficacy of vitamin D₃ in patients with diabetic nephropathy: an updated meta-analysis. *Iran Red Crescent Med J.* 2017;19(12):e64275.
- Zhang H, Yang Y, Wang Y, Wang B, Li R. Renal-protective effect of thalidomide in streptozotocin-induced diabetic rats through anti-inflammatory pathway. *Drug Des Devel Ther.* 2018;12:89-98.
- Chou S, Tseng S. Oxidative stress markers in type 2 diabetes patients with diabetic nephropathy. *Clin Exp Nephrol.* 2017;21(2):283-292.
- Burgos-Morón E, Abad-Jiménez Z, Marañón AM, et al. Relationship between oxidative stress, ER stress, and inflammation in type 2 diabetes: the battle continues. *J Clin Med.* 2019;8(9):1385.
- Giri B, Dey S, Das T, Sarkar M, Banerjee J, Dash SK. Chronic hyperglycemia mediated physiological alteration and metabolic distortion leads to organ dysfunction, infection, cancer progression and other pathophysiological consequences: an update on glucose toxicity. *Biomed Pharmacother.* 2018;107:306-328.
- Michałek M, Tabiś A, Paślawska U, Noszczyk-Nowak A. Antioxidant defence and oxidative stress markers in cats with asymptomatic and symptomatic hypertrophic cardiomyopathy: a pilot study. *BMC Vet Res.* 2020;16(26):1-9.
- Mitri J, Pittas AG. Vitamin D and diabetes. *Endocrinol Metab Clin North Am.* 2014; 43(1):205-232.
- Bikle D. Vitamin D: production, metabolism, and mechanisms of action. [updated 2017 aug 11]. In: Feingold KR, Anawalt B, Boyce A, et al., (editors.). *Endotext [Internet]*. MDText.com, Inc.; 2000. Available from: <https://www.ncbi.nlm.nih.gov/books/NBK278935/>
- Ke CY, Yang FL, Wu WT, et al. Vitamin D₃ reduces tissue damage and oxidative stress caused by exhaustive exercise. *Int J Med Sci.* 2016;13(2):147-153.

13. Pike JW, Christakos S. Biology and mechanisms of action of the vitamin D hormone. *Endocrinol Metab Clin North Am.* 2017;46(4):815-843.
14. Pike JW, Meyer MB, Lee SM, Onal M, Benkusky NA. The vitamin D receptor: contemporary genomic approaches reveal new basic and translational insights. *J Clin Invest.* 2017;127(4):1146-1154.
15. Pittas AG, Dawson-Hughes B, Sheehan P, et al. Vitamin D supplementation and prevention of type 2 diabetes. *N Engl J Med.* 2019;381(6):520-530.
16. Sadri H, Goodarzi MT, Salemi Z, Seifi M. Antioxidant effects of biochanin A in streptozotocin induced diabetic rats. *Human and Animal Health Braz. Arch. Biol. Technol.* 2017;60:1-10.
17. Alotaibi MR, Fatani AJ, Almnaizel AT, Ahmed MM, Abuhashish HM, Al-Rejaie SS. In vivo assessment of combined effects of glibenclamide and losartan in diabetic rats. *Med Princ Pract.* 2019;28(2):178 – 185.
18. El-Sayed LA, Tork OM, Seddiek H, Taha RM, Gomaa NI. Vitamin D protects diabetic rats from neuropathic changes by improving insulin sensitivity and upregulating vitamin D receptors. *Kasr Al Ainy Medical Journal.* 2015; 21(3):115-124.
19. Singh B, Kumarb A, Singh H, et al. Zingerone produces anti-diabetic effects and attenuates diabetic nephropathy by reducing oxidative stress and overexpression of NF- κ B, TNF- α , and COX-2 proteins in rats. *J Funct Foods.* 2020;74:104199.
20. Banua BB, Kalaiavanib K, Vijayakumarc M, Arokiyarajd S. Moringa concanensis nimmo extracts ameliorates hyperglycemia-mediated oxidative stress and upregulates PPAR γ and GLUT4 gene expression in liver and pancreas of streptozotocin-nicotinamide induced diabetic rats. *Biomed Pharmacother.* 2019; 112:108688.
21. Alrefaie Z, Alhayanib A. Vitamin D3 improves decline in cognitive function and cholinergic transmission in prefrontal cortex of streptozotocin-induced diabetic rats. *Behav Brain Res.* 2015;287:156-162.
22. Sha J, Sui B, Su X, Meng Q, Zhang C. Alteration of oxidative stress and inflammatory cytokines induces apoptosis in diabetic nephropathy. *Mol Med Rep.* 2017;16:7715-7723.
23. Derakhshanian H, Javanbakht MH, Zarei M, Djalali E, Djalali M. Vitamin D increases IGF-I and insulin levels in experimental diabetic rats. *Growth Horm IGF Res.* 2017;36:57-59.
24. Almatroodi SA, Alnuqaydan AM, Babiker AY, Almogbel MA, Khan AA, Husain Rahmani AH. 6-Gingerol, A bioactive compound of ginger attenuates renal damage in streptozotocin-induced diabetic rats by regulating the oxidative stress and inflammation. *Pharmaceutics.* 2021;13(3):317.
25. Atia T, Sakr HI, Damanhory AA, Moawad K, Alsawy M. The protective effect of green tea on diabetes-induced hepato-renal pathological changes: a histological and biochemical study. *Arch Physiol Biochem.* 2020;126(2):1-12.
26. Oza JM, Kulkarni YA. Formononetin treatment in type 2 diabetic rats reduces insulin resistance and hyperglycemia. *Front. Pharmacol.* 2018;9:739.
27. Tian H, Yang J, Xie Z, Liu J. Gliquidone alleviates diabetic nephropathy by inhibiting notch/snail signaling pathway. *Cell Physiol Biochem.* 2018;51(5):2085-2097.
28. Beaudry KM, Devries MC. Nutritional strategies to combat type 2 diabetes in aging adults: the importance of protein. *Front. Nutr.* 2019;6:138.
29. Almalki DA, Alghamdi SA, Al-Attar AM. Comparative study on the influence of some medicinal plants on diabetes induced by streptozotocin in male rats. *BioMed Res Int.* 2019. <https://doi.org/10.1155/2019/3596287>
30. Pandarekandy ST, Sreejesh PG, Thampi BSH, Sreekumaran E. Hypoglycaemic effect of glibenclamide: a critical study on the basis of creatinine and lipid peroxidation Status of streptozotocin-induced diabetic rat. *Indian J Pharm Sci.* 2017;79(5):768-777.
31. Proks P, Kramer H, Haythorne E, Ashcroft FM. Binding of sulphonylureas to plasma proteins – A K_{ATP} channel perspective. *PLoS ONE.* 2018;13(5): e0197634.
32. Hassan F, El-Said EE, El-sayed GR, El-Sayed SA, Awadin WF. Vitamin D dietary supplementation ameliorates the complications associated with type 2 diabetes induced by streptozotocin. *Comp Clin Path.* 2020;29(3):591-598.
33. Muñoz-Garach A, García-Fontana B, Muñoz-Torres M. Vitamin D Status, calcium intake and risk of developing type 2 diabetes: an unresolved issue. *Nutrients.* 2019; 11(3):642.
34. Rosenblit PD. Common medications used by patients with type 2 diabetes mellitus: what are their effects on the lipid profile? *Cardiovasc Diabetol.* 2016;15:95.
35. Elseweidy MM, Aly SI, Hammad SK, Shershiri NI. Early myocardial injury biomarkers in diabetic hyperlipidemic rats: impact of 10-dehydrogingerdione and vitamin D3. *Exp Biol Med.* 2020;245(15):1326-1334.
36. Miao Z, Wang S, Wang Y, et al. A potential linking between vitamin D and adipose metabolic disorders. *Canadian Journal of Gastroenterology and Hepatology.* 2020;2020:2656321.
37. Silvagno F, Pescarmona G. Spotlight on vitamin D receptor, lipid metabolism and mitochondria: some preliminary emerging issues. *Mol Cell Endocrinol.* 2017;450:24-31.
38. Nakhoul N, Thawko T, Farber E, et al. The therapeutic effect of active vitamin D supplementation in preventing the progression of diabetic nephropathy in a diabetic mouse model. *Journal of Diabetes Research.* 2020;2020:7907605.
39. Gembillo G, Cernaro V, Salvo A, et al. Role of vitamin D Status in diabetic patients with renal disease. *Medicina (Kaunas).* 2019;55(6):273.
40. Wang Y, Yang S, Zhou Q, Zhang H, Yi B. Effects of vitamin D supplementation on renal function, inflammation and glycemic control in patients with diabetic nephropathy: a systematic review and meta-analysis. *Kidney Blood Press Res.* 2019; 44(1):72-87.
41. Di Vincenzo A, Tana C, El Hadi H, Pagano C, Vettor R, Rossato M. Antioxidant, anti-inflammatory, and metabolic properties of tocopherols and tocotrienols: clinical implications for vitamin E supplementation in diabetic kidney disease. *Int. J. Mol. Sci.* 2019; 20(20):5101.
42. Almuthanon AAY, Mohammad JA, Fathi FH. Comparative effects of metformin and glibenclamide on the redox balance in type 2 diabetic patients. *Pharmacia.* 2021;68(2):327-332.
43. Chandrasegaran G, Elanchezhyan C, Ghosh K. Effects of berberine chloride on the liver of streptozotocin-induced diabetes in albino wistar rats. *Biomedicine and Pharmacotherapy.* 2018;99:227-236.

44. Ebaid H, Bashandy SAE, Alhazza IM, Hassan I, Al-Tamimi J. Efficacy of a methanolic extract of *Adansonia digitata* leaf in alleviating hyperglycemia, hyperlipidemia, and oxidative stress of diabetic rats. *Biomed Res Int*. 2019;2019:2835152.
45. Alatawi FS, Faridi UA, Alatawi MS. Effect of treatment with vitamin D plus calcium on oxidative stress in streptozotocin-induced diabetic rats. *Saudi Pharm J*. 2018;26(8):1208-1213.
46. Araújo LS, Torquato BGS, da Silva CA, et al. Renal expression of cytokines and chemokines in diabetic nephropathy. *BMC Nephrol*. 2020; 21(1):308.
47. Navarro-Gonzalez JF, Mora-Fernandez C. The role of inflammatory cytokines in diabetic nephropathy. *J Am Soc Nephrol*. 2008;19(3):433-442.
48. Zakhary CM, Rushdi H, Hamdan JA, et al. Protective role of vitamin D therapy in diabetes Mellitus type II. *Cureus*. 2021;13(8): e17317.
49. Yusupov E, Li-Ng M, Pollack S, Yeh JK, Mikhail M, Aloia JF. Vitamin D and Serum cytokines in a randomized clinical trial. *International Journal of Endocrinology*. 2010;2010:305054.
50. Azizieh F, Alyahya KO, Raghupathy R. Association between levels of vitamin D and inflammatory markers in healthy women. *J Inflamm Res*. 2016;2016(9):51-57.
51. Uyar A, Abdulrahman NT. A histopathological, immunohistochemical and biochemical investigation of the anti-diabetic effects of the *Pistacia terebinthus* in diabetic rats. *Biotech Histochem*. 2020;95(2):92-104.
52. Yachamaneni J, Dhanraj S. Anti-Hepatotoxic and Anti-oxidant Activity of *Limnanthemum indicum* Against Carbon Tetrachloride Induced Liver Toxicity in Rats. *IJPER*. 2017;51(2):321-328.
53. Uyar A, Yaman T, Keles OF, et al. Reduction of hepatorenal and pancreatic damage by *Ferula elaeochytris* extract in STZ induced diabetic rats. *Biotech Histochem*. 2021;96(1):28-40.
54. Akbas F. Protective effect of insulin treatment on early renal changes in streptozotocin-induced diabetic rats. *Acta Endocrinol (Buchar)*. 2018;14(2):169-174.
55. Ioannidis I. Diabetes treatment in patients with renal disease: is the landscape clear enough? *World J Diabetes*. 2014;5(5):651-658.
56. Chang AS, Hathaway CK, Smithies O, Kakoki M. Transforming growth factor- β 1 and diabetic nephropathy. *Am J Physiol Renal Physiol*. 2016;310(8):F689-F696.
57. Yang Y., Lei Y., Liang Y., et al. Vitamin D protects glomerular mesangial cells from high glucose-induced injury by repressing JAK/STAT signaling. *Int Urol Nephrol*. 2021;53:1247-1254.
58. Lei M, Liu M, Guo J. The emerging role of vitamin D and vitamin D receptor in diabetic nephropathy. *BioMed Research International*. 2020;2020:8,4137268.