

RESEARCH ARTICLE

Open Access

Association between low-frequency ultrasound and hip fractures – comparison with DXA-based BMD

Mikko Määttä^{1,2*}, Petro Moilanen³, Jussi Timonen³, Pasi Pulkkinen¹, Raija Korpelainen^{1,4,5,6} and Timo Jämsä^{1,6,7}

Abstract

Background: New methods for diagnosing osteoporosis and evaluating fracture risk are being developed. We aim to study the association between low-frequency (LF) axial transmission ultrasound and hip fracture risk in a population-based sample of older women.

Methods: The study population consisted of 490 community-dwelling women (78–82 years). Ultrasound velocity (V_{LF}) at mid-tibia was measured in 2006 using a low-frequency scanning axial transmission device. Bone mineral density (BMD) at proximal femur measured using dual-energy x-ray absorptiometry (DXA) was used as the reference method. The fracture history of the participants was collected from December 1997 until the end of 2010. Lifestyle-related risk factors and mobility were assessed at 1997.

Results: During the total follow-up period (1997–2010), 130 women had one or more fractures, and 20 of them had a hip fracture. Low V_{LF} (the lowest quartile) was associated with increased hip fracture risk when compared with V_{LF} in the normal range (Odds ratio, OR = 3.3, 95% confidence interval (CI) 1.3-8.4). However, V_{LF} was not related to fracture risk when all bone sites were considered. Osteoporotic femoral neck BMD was associated with higher risk of a hip fracture (OR = 4.1, 95% CI 1.6-10.5) and higher risk of any fracture (OR = 2.4, 95% CI 1.6-3.8) compared to the non-osteoporotic femoral neck BMD. Decreased V_{LF} remained a significant risk factor for hip fracture when combined with lifestyle-related risk factors (OR = 3.3, 95% CI 1.2-9.0).

Conclusion: Low V_{LF} was associated with hip fracture risk in older women even when combined with lifestyle-related risk factors. Further development of the method is needed to improve the measurement precision and to confirm the results.

Keywords: Quantitative ultrasound, Speed of sound, Osteoporosis, Hip fracture, Cortical bone

Background

Osteoporotic fractures possess a significant public health problem that is increasing due to aging population. At the moment, the golden standard used in fracture risk assessment is bone mineral density (BMD) measurements using dual energy x-ray absorptiometry (DXA). Recently, World Health Organization (WHO) introduced FRAX[®], a fracture risk calculator that combines easily obtained clinical information and DXA-based femoral neck BMD, if

available, to estimate the 10-year osteoporotic fracture probability [1].

Quantitative ultrasound (QUS) has raised interest as an alternative method to x-ray-based imaging for measuring bone status. There is a number of different QUS methods that have been used to assess bone status and to evaluate fracture risk [2]. The advantages of ultrasound include a relatively low cost and a portable technique with no ionizing radiation. The results of QUS measurements have been shown to be associated with fracture risk [3]. A question has arisen whether QUS parameters can serve as a surrogate for DXA-based BMD to improve FRAX[®] estimate [4].

* Correspondence: mikko.maatta@hiphealth.ca

¹Department of Medical Technology, University of Oulu, Institute of Biomedicine, PO Box 5000, FI-90014 Oulu, Finland

²Infotech Oulu, University of Oulu, Oulu, Finland

Full list of author information is available at the end of the article

A novel low-frequency (LF) axial transmission QUS method for assessing the properties of cortical bone has been shown to reflect bone density and cortical thickness [5-7]. A relationship between the LF tibial velocity (V_{LF}) and geometry of proximal femur in older women has also been suggested [8]. However, the suitability of the method for individual fracture risk assessment has not yet been established.

In this study we evaluated the association between the LF axial transmission ultrasound method and fractures in a population-based sample of older women, using the standard DXA as the reference method. We hypothesized that decreased ultrasound velocity measured on tibia is associated with increased hip fracture risk in elderly females. In our previous population based prospective study we assessed life-style related determinants of hip fracture in elderly females [9]. Here we analyzed how the combination of low-frequency ultrasound and previously determined lifestyle-related factors are related to the risk of hip fracture.

Methods

Subjects and clinical assessment

The study population consisted of 490 women born between 1924 and 1927, originally recruited in 1997 as a population-based cohort to study the risk factors for osteoporosis and fractures [10]. All those still alive belonging to the original cohort were invited to clinical measurements in 2006. A total of 618 women attended these measurements, and 490 were measured using quantitative ultrasound. The fracture history between December 1, 1997 and December 31, 2010 was collected from hospital discharge registers. The fractures were confirmed manually from medical records to avoid the bias of recording multiple hospitalizations due to a single fracture. Health and lifestyle information, including medical history, age at menopause, smoking habits, alcohol and coffee consumption, physical activity and mobility, calcium and vitamin D intakes, and fracture history was collected at study baseline in 1997 using self-administrative questionnaires and interviews. The assessment of functional mobility at baseline was done using the "Timed Up & Go" (TUG) test [11]. All subjects gave a written informed consent and the study protocol was approved by the Ethics Committee of the Northern Ostrobothnia Hospital District. The study was done in accordance with the Declaration of Helsinki.

Quantitative ultrasound measurements

The speed of sound was recorded in the medial mid-shaft of the left tibia using a scanning low-frequency (LF) axial transmission device. The principle of the device and the measurement setup has been published previously [7,8]. In brief, two separate transducers ($f_c = 200$ kHz) mounted on a rail scanned a 30 mm distance. The time of flight of

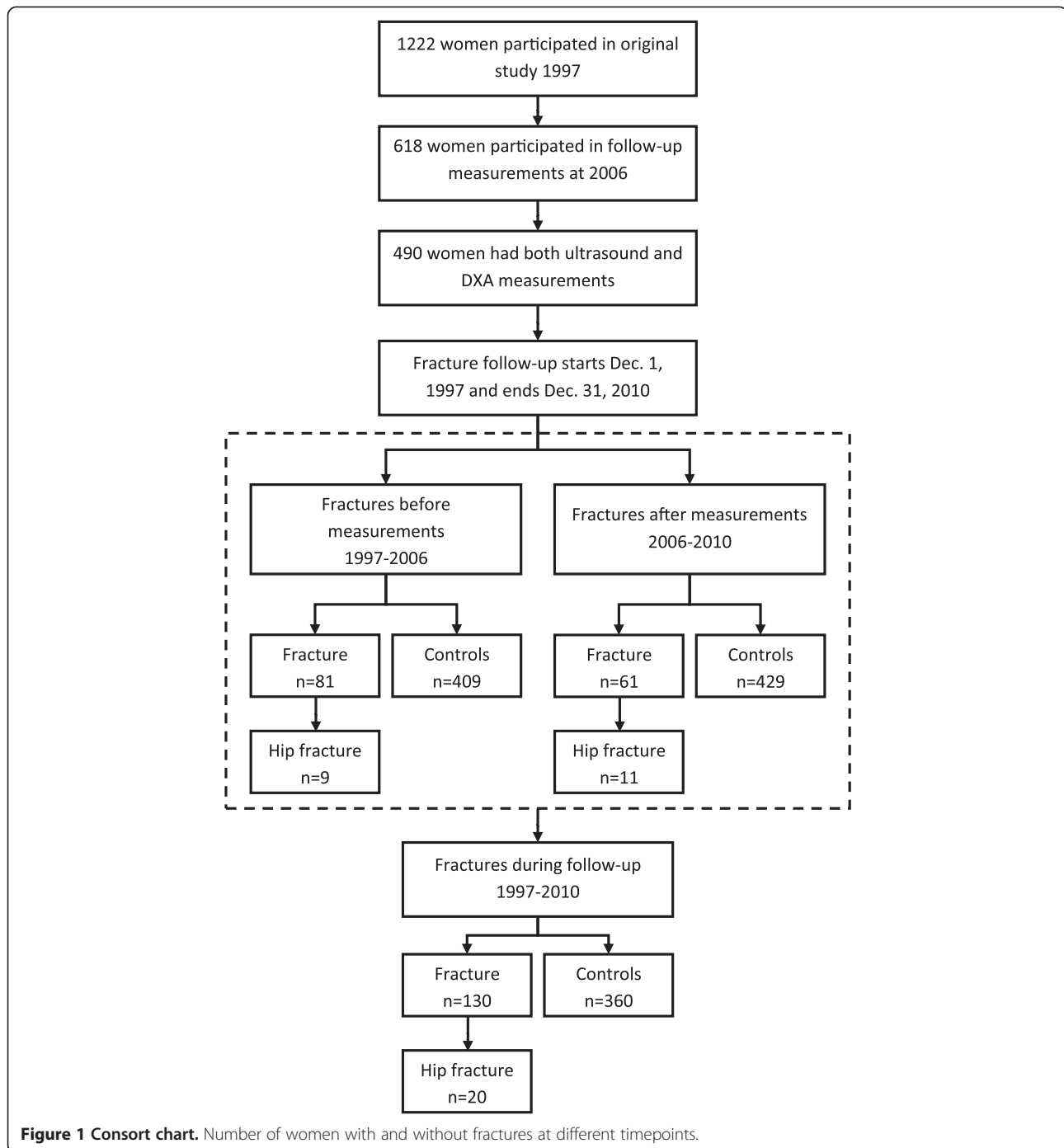
the first arriving signal (FAS) was determined using the first maximum. The apparent velocity of the FAS (V_{LF}) was determined by measuring the time of flight for a number of source-receiver distances. The precision error was characterized by CV_{rms} which was 3.2%. The standardized coefficient of variation (SCV) [12] of the method was 6.6%. Due to the lack of established reference population data, we used the present study population to define the range of SCV.

DXA measurements

A Hologic DXA device (Delphi QDR series, Hologic, Bedford, MA, USA) was used to get the reference data. Standard anteroposterior positioning was used to measure the femoral neck bone mineral density (BMD) of the left proximal femur.

Statistical analysis

The subjects of the study were divided into three groups based on their fracture history (Figure 1): a) women without fractures (NE, controls), b) women with any fracture (Fx), and c) women with a hip fracture (Hip Fx). All the hip fracture patients were also included in group (b). The fracture data of three different time periods were analyzed: a) from the beginning of the follow-up period until the time of bone measurements (1997–2006), b) from the time of the bone measurements until the end of the follow-up period (2006–2010), and c) the whole follow-up period (1997–2010). The women with fractures were compared to those without fractures. Since the data were normally distributed the independent samples t -test was used to analyze the statistical significance of the differences between the NE, Fx, and Hip Fx groups. The study subjects were also classified in to normal, osteopenic, and osteoporotic according to their femoral neck BMD T-score in accordance with the WHO definition [13]. Due to the lack of an established reference population, T-scores could not be calculated for low-frequency ultrasound velocity (V_{LF}). Thus, V_{LF} results were divided into three groups based on quartiles within the study population: a) low V_{LF} (0-25%), b) moderate V_{LF} (25-50% and 50-75% combined), and c) high V_{LF} (75-100%). Crosstabulation and the χ^2 test were used to compare the distribution of the subjects with fractures and those without fractures within these groups. To further analyze the statistical significance of the association of bone measurement results (QUS/DXA) with the fracture risk, a multivariate logistic regression analysis was used. The results of those analyses are reported as the odds ratios (OR) and 95% confidence intervals (CI). The imaging modality (QUS/DXA) used was included in the model and the forward stepwise (likelihood ratio) method was used to form the final models. All models were adjusted with age and BMI. For the fractures that occurred after the measurements in 2006, the



predictive ability of each bone measurement value was assessed using the Cox proportional hazards model and the corresponding hazard ratios (HR), and the 95% CIs were calculated. A similar protocol to logistic regression was used. In addition, previous fractures (1997–2006) (yes, no) was added to models as covariates. The follow-up time between the measurement time and the time of the first fracture, death, or end of the follow-up period was recorded. Logistic regression models were also

calculated to analyze the effect of combining V_{LF} and previously determined [9] lifestyle-related risk factors for hip fracture. In our previous population based cohort study BMI, functional mobility, physical activity, hypertension, coffee consumption, and daily smoking predicted hip fractures in 1222 old women. These factors were used as a covariates to determine the best fit model for the current subpopulation with ultrasound and DXA measurements.

Table 1 Distribution of fractures (n (%)) according to the ICD-10 code with selected subdivisions in a population-based sample of older women (n = 490)

		1997–2006	2006–2010	1997–2010
M80	Osteoporosis with pathological fracture		2 (2.6)	2 (1.1)
S12	Fracture of neck		1 (1.3)	1 (0.6)
S22	Fracture of rib(s), sternum and thoracic spine	3 (3.1)	3 (3.9)	6 (3.4)
S32	Fracture of lumbar spine and pelvis			
S32.0	Fracture of lumbar vertebra		9 (11.8)	9 (5.2)
	Other	3 (3.1)	4 (5.3)	7 (4.0)
S42	Fracture of shoulder and upper arm	11 (11.2)	6 (7.9)	17 (9.8)
S52	Fracture of forearm			
S52.5	Fracture of lower end of radius	29 (29.6)	22 (28.9)	51 (29.3)
	Other	5 (5.1)	1 (1.3)	6 (3.4)
S62	Fracture at wrist and hand level	7 (7.1)	5 (6.6)	12 (6.9)
S72	Fracture of femur			
S72.0	Fracture of neck of femur	4 (4.1)	7 (9.2)	11 (6.3)
S72.1	Pertrochanteric fracture	1 (1.0)	4 (5.3)	5 (2.9)
S72.2	Subtrochanteric fracture	4 (4.1)		4 (2.3)
	Other	3 (3.1)	6 (7.9)	9 (5.2)
S82	Fracture of lower leg, including ankle	26 (26.5)	5 (6.6)	31 (17.8)
S92	Fracture of foot, except ankle	2 (2.0)	1 (1.3)	3 (1.7)
Total number of fractures		98 (100)	76 (100)	174 (100)

ICD-10 = International Classification of Diseases, 10th revision. Time periods represent previous fractures (1997–2006) and future fractures (2006–2010) with respect to the bone measurements, and all fractures during the follow-up period (1997–2010).

Table 2 Characteristics of the women with different fracture status (NF, Fx, and Hip Fx) in different time periods (1997–2006, 2006–2010, and 1997–2010) at the time of the measurements (2006) (n = 490)

	NF n = 360	Fx 1997-2010 n = 130		Hip Fx 1997-2010 n = 20	
		Fx 1997-2006 n = 81	Fx 2006-2010 n = 61	Hip Fx 1997-2006 n = 9	Hip Fx 2006-2010 n = 11
Age [years]	79.9 (1.2)	80.0 (1.2)	80.3 (1.1)*	80.0 (1.3)	80.5 (0.9)
Weight [kg]	67.7 (11.3)	79.7 (1.2)	80.3 (1.1)*	79.3 (1.4)	80.5 (0.9)
		69.5 (12.3)	65.8 (12.2)	75.7 (10.2)*	65.0 (18.2)
Height [cm]	155.2 (5.4)	155.6 (5.8)	154.5 (6.4)	158.9 (7.2)*	157.4 (8.8)
		156.6 (5.4)*	154.5 (6.4)	160.7 (4.4)*	157.4 (8.8)
BMI [kg/m ²]	28.1 (4.5)	28.0 (4.7)	27.5 (4.6)	27.4 (4.6)	25.9 (4.9)
		28.4 (4.8)	27.5 (4.6)	29.3 (3.6)	25.9 (4.9)
V _{LF} [m/s]	3583 (193)	3547 (200)	3564 (203)	3515 (245)	3527 (215)
		3534 (204)*	3564 (203)	3500 (291)	3527 (215)
Femoral neck BMD [g/cm ²]	0.654 (0.102)	0.606 (0.083)*	0.605 (0.096)*	0.589 (0.102)*	0.570 (0.112)*
		0.609 (0.078)*	0.605 (0.096)*	0.611 (0.089)	0.570 (0.112)*

Values are Mean (SD).

*Independent samples t-test p-value < 0.05 when compared to NF group.

Table 3 The distribution of women with and without a fracture and hip fracture according to the V_{LF} and BMD values

		NF (n = 360)	Fx 1997–2010 (n = 130)	Hip Fx 1997–2010 (n = 20)
V_{LF}	Highest 25%	101 (28)	24 (18)	5 (25)*
	25% to 75%	170 (47)	69 (53)	5 (25)
	Lowest 25%	89 (25)	37 (28)	10 (50)
Femoral neck BMD	Normal	73 (20)	11 (8)*	2 (10)*
	Osteopenic	206 (57)	65 (50)	8 (40)
	Osteoporotic	81 (23)	54 (42)	10 (50)

Values are n (%). *Distribution of the group is different than that of the NF group (p-value of χ^2 test < 0.05).

Statistical analyses were done using SPSS for Windows (Release 18.0, SPSS Inc., Chicago, IL, USA). In all tests, p-values less than 0.05 were considered statistically significant.

Results

During the first follow-up period (1997–2006), 98 fractures occurred in 81 women (Figure 1, Table 1). Between 2006 and 2010, 61 subjects sustained fractures; in total 76 different fractures occurred. Altogether, between the years 1997 and 2010, 174 different fractures occurred in 130 subjects. Wrist fracture was the most common fracture (n = 51). There were 9 hip fractures between 1997 and 2006, and 11 hip fractures after the 2006 measurements, totaling in 20 hip fractures during the whole follow-up period. Thirty-five subjects died during the follow-up period.

The characteristics of different fracture groups are shown in Table 2. The women with a hip fracture were taller than the women without fractures (p < 0.05). Those with a previous fracture (1997–2006) had a lower V_{LF} than the ones without fractures (p < 0.05). Subjects who sustained a

fracture during the follow-up period had a lower femoral neck BMD than those in the NF group (p < 0.05), except when comparing the Hip Fx 1997–2006 and NF groups.

Differences between distributions in the NF and Hip Fx groups were observed in both V_{LF} and femoral neck BMD (p < 0.05) (Table 3). Also, there was a difference in the distribution of subjects based on femoral neck BMD between the Fx and NF groups.

Based on the regression analysis, low V_{LF} was not associated with previous fractures (1997–2006) or with the fractures that occurred after the measurements (2006–2010) (Table 4). Decreased femoral neck BMD, however, was associated with increased fracture risk in all follow-up periods; estimated risks (odds and hazard ratios) varied between 1.8 and 2.5 compared to the women with femoral neck T-score > -2.5.

Decreased V_{LF} was associated with an increased risk of hip fracture occurred before the measurements (1997–2006) (OR = 6.3; Table 5). Additionally, across the whole follow-up period (1997–2010), low V_{LF} was associated with higher risk of hip fracture compared to moderate or high V_{LF} (OR = 3.3). An osteoporotic femoral neck BMD predicted hip fractures after the measurements (2006–2010) with a hazard ratio (HR) of 4.8 (95% CI 1.4–16.6) for subjects with a T-score \leq -2.5 compared to the women with normal or osteopenic T-score. Low femoral neck BMD was also associated with an increased risk of hip fracture (OR = 4.1, 95% CI 1.6–10.5) during the whole follow-up period (1997–2010) compared to women with normal or osteopenic femoral neck BMD. When V_{LF} was combined with previously assessed [9] hip fracture risk factors regression model for the same population (Table 6), the final model included V_{LF} , low physical activity, and impaired functional mobility (p = 0.001, Table 6), V_{LF} being the strongest independent factor for hip fracture (OR = 3.3, 95% CI 1.2–9.0). Femoral neck BMD did not reach statistical significance when included in the regression analyses along with lifestyle-related risk factors.

Table 4 Association of low V_{LF} and osteoporotic femoral neck BMD with fractures that occurred during different follow-up periods

		n	Fx 1997-2006 NF n = 409, Fx n = 81		Fx 2006-2010 NF n = 429, Fx n = 61		Fx 1997-2010 NF n = 334, Fx n = 121*	
			OR (95% CI)	p	HR (95% CI)	p	OR (95% CI)	p
V_{LF}	Moderate or high (25-100%)	364						
	Low (0-25%)	126	1.6 (0.9 - 2.6)	0.088	0.8 (0.4 - 1.4)	0.359	1.3 (0.8 - 2.0)	0.326
Femoral neck BMD	T-score > -2.5	355						
	T-score \leq -2.5	135	1.8 (1.1 - 3.0)	0.019	2.4 (1.4 - 3.9)	0.001	2.5 (1.6 - 3.9)	<0.001

All regression models were adjusted by age and BMI. In Cox regression previous fracture (during 1997–2006) was also used as a covariate. NF = non-fractured group, Fx = fractured group, n = number of subjects, OR = odds ratio of logistic regression, HR = hazard ratio of Cox regression, CI = confidence interval, p = p-value of the covariate in the model. *Subjects who died during the follow-up were excluded (NF n = 26, Fx n = 9).

Table 5 Association of low V_{LF} and osteoporotic femoral neck BMD with hip fractures that occurred during different follow-up periods

		Hip Fx 1997-2006			Hip Fx 2006-2010			Hip Fx 1997-2010		
		NF n = 409, Hip Fx n = 9			NF n = 429, Hip Fx n = 11			NF n = 334, Hip Fx n = 19*		
		n	OR (95% CI)	p	n	HR (95% CI)	p	n	OR (95% CI)	p
V_{LF}	Moderate or high (25-100%)	313			324			260		
	Low (0-25%)	105	6.3 (1.5 - 25.5)	0.010	116	1.7 (0.5 - 5.7)	0.415	93	3.3 (1.3 - 8.4)	0.012
Femoral neck BMD	T-score > -2.5	311			325			267		
	T-score ≤ -2.5	107	1.5 (0.4 - 6.0)	0.593	115	4.8 (1.4 - 16.6)	0.013	86	4.1 (1.6 - 10.5)	0.003

All regression models were adjusted by age and BMI. In Cox regression previous fracture (during 1997-2006) was also used as a covariate. NF = non-fractured group, Hip Fx = hip fracture group, n = number of subjects, OR = odds ratio of logistic regression, HR = hazard ratio of Cox regression, CI = confidence interval, p = p-value of the covariate in the model. *Subjects who died during the follow-up were excluded (NF n = 26, Hip Fx n = 1).

Discussion

In this population-based study, we used a low-frequency ultrasound scanner to assess the association between decreased ultrasound velocity and fracture risk. To our knowledge, this is the first time that low-frequency axial transmission ultrasound is being used in a population-based cohort of older women. The reported results show that decreased ultrasound velocity (V_{LF}) was associated with higher risk of hip fracture compared to moderate or high V_{LF} . DXA and LF ultrasound yielded similar results when comparing the hip fracture and non-fracture groups.

Our findings are in line with earlier studies on the fracture-discrimination ability of similar axial transmission ultrasound devices. Using the Omnisense (Sunlight, BeamMed Ltd, Petah Tikva, Israel) device, operating at a center frequency of 1.25 MHz, Nguyen et al. [14] reported that decreased tibial SOS is associated with increased fracture risk independently of BMD and age with an odds ratio (OR) of 1.75. The corresponding OR as determined for

the femoral neck BMD here was 2.11. Damilakis et al. [15] found no difference using the Omnisense device in the tibial SOS of healthy subjects and subjects with osteoporotic fracture. Nevertheless, they reported increased osteoporotic fracture ORs for ultrasound measurements on the radius and phalanx (ORs between 1.7 and 2.7). In other studies with an Omnisense device, SOS measured on the radius has been shown to discriminate subjects with hip fracture from controls with no fractures (ORs varying between 1.9 and 2.7) [16-18]. Another axial transmission QUS device, Myriad Soundscan (Myriad Ultrasound systems, Israel) uses a center frequency of 250 kHz which is closer to that used in this study. Using this device, Stegman et al. [19] reported a low-energy appendicular fracture OR of 1.4 for the tibial SOS. This observation is in good agreement with the present study, where we found a similar trend in the retrospective part of the study. Augat et al. [20] found an increased OR of 1.7 for the tibial SOS of subjects who sustained hip fracture compared to non-fracture controls. The corresponding OR for the femoral neck BMD was 3.5 in their study. This SOS OR is somewhat lower than those observed in the present study for hip fractures. Also, Talmant et al. [21] studied the fracture discrimination ability of a 1 MHz bidirectional ultrasonometer. They reported a fracture OR of 1.8 for the radius SOS and of 2.1 for the femoral neck BMD. Direct comparison between the ultrasound methods used is difficult due to differences in the ultrasound methodology and measurement setup. Also, the bone site and type of fracture, as well as the study populations, affect the results. However, the majority of the studies imply that axial transmission ultrasound is capable of assessing fracture risk.

Some studies have assessed the combining clinical risk factors and QUS parameters [22-24]. In the current study low V_{LF} remained a significant risk factor for hip fracture when included in the lifestyle-related risk factor model observed in our previous study with the same population [9]. However, the lifestyle-related risk factors were collected at baseline whereas QUS measurements were made at eight

Table 6 Logistic regression models without and with V_{LF} for having a hip fracture in a population-based sample of older women

	OR	(95% CI)	p-value
Lifestyle-related risk factors ¹			0.002*
TUG ≥ 11 s vs. less (referent)	3.4	(1.2 - 9.9)	0.026
Low PA vs. moderate to high (referent)	2.8	(1.0 - 7.5)	0.046
Coffee consumption > 3 cups/day vs. less (referent)	0.3	(0.1 - 1.0)	0.051
Lifestyle-related risk factors and V_{LF} ²			0.001*
Low V_{LF} (0-25%) vs. Moderate or high (25-100%) (referent)	3.3	(1.2 - 9.0)	0.018
Low PA vs. moderate to high (referent)	3.1	(1.1 - 8.5)	0.028
TUG ≥ 11 s vs. less (referent)	3.1	(1.0 - 8.9)	0.042

Odds ratios (OR) are calculated compared to the NF group. TUG "Timed Up & Go" test, PA physical activity, CI confidence interval. The number of subjects in the analyses was Hip Fx n = 18, NF n = 296. ¹Age, BMI, TUG, PA, hypertension, coffee consumption, and smoking were included in the analysis to form the best model, ²The best model after including V_{LF} in the analysis, *p-value for the full model.

years from baseline. Thus, the results need to be confirmed in future prospective studies.

In the present study ultrasound velocity was measured at mid-tibia. Even though osteoporosis is a systemic disease, the degree of changes in bone structure varies between bone sites. In weight-bearing sites (e.g. the tibia) bone loss is not as big as in non-weight-bearing sites (e.g. the radius and phalanx) [25]. Thus, even if the tibia is an easily accessible site for axial ultrasound measurements, it may not be the most responsive site to osteoporotic changes. Recently, we have reported that LF axial-transmission ultrasound in the radius is able to retrospectively discriminate postmenopausal women with fractures from age-matched controls with no fractures using an improved version of the LF ultrasound device used here [26].

The strength of the present study was the use of a population-based cohort of older women. The other strength was the relatively long follow-up time before and after the bone measurements. However, this study also had some limitations. One major limitation was the limited measurement precision of the current prototype device. The bulky mechanical scanning setup limits the positioning accuracy and does not enable proper correction for the impacts of overlying soft tissue [8]. As a result, the *in vivo* precision (CV_{rms}) was limited. During the follow-up period of the study, significant mechanical improvements were implemented in the device, and a CV of 0.5% could be achieved with the latest device version [5,26]. Obviously, this valuable information available after the device improvement cannot retrospectively improve the quality of the results presented here. The other limitation is the retrospective nature of the study. It is possible that the fracture events before the measurements caused the changes in bone properties (e.g. via altered loading conditions) and affected on outcome of the measurement. Also, the number of hip fractures was relatively low, which significantly limited the statistical reliability of the results. Additionally, a minor limitation was the lack of reference data for young and healthy population, which disabled the determination of the T-score. Instead, we used quartiles to define the subjects with low V_{LF} values.

Conclusions

In conclusion, decreased low-frequency ultrasound velocity was associated to increased hip fracture risk despite the limited measurement precision. The results reported here can be used to further improve the measurement precision of the method so as to reliably predict future fractures. To this end carefully planned follow-up studies are needed.

Competing interests

The authors declare that they have no competing interests.

Authors' contributions

MM participated in the fracture data collection, carried out the main analyses, and drafted the manuscript. PM participated in the analyses and interpretation of ultrasound data and manuscript writing. JT and PP made a contribution to the design of the study and revising the manuscript. RK and TJ participated in study conception and design, data interpretation and made substantial contributions to the manuscript. RK also participated significantly to collection of lifestyle-related risk factors data. All authors have read, revised, and given their final approval of the version to be published.

Acknowledgements

The work done is a part of the Osteoporotic Fracture Risk study supported by the Finnish Funding Agency for Technology and Innovation (Tekes, projects no. 40463/05, 40403/06). The work was also supported by the Academy of Finland. MM was supported by Tauno Tönnö Foundation and Finnish Cultural Foundation.

Author details

¹Department of Medical Technology, University of Oulu, Institute of Biomedicine, PO Box 5000, FI-90014 Oulu, Finland. ²Infotech Oulu, University of Oulu, Oulu, Finland. ³Department of Physics, University of Jyväskylä, Jyväskylä, Finland. ⁴Department of Sports and Exercise Medicine, Oulu Deaconess Institute, Oulu, Finland. ⁵Institute of Health Sciences, University of Oulu, Oulu, Finland. ⁶Medical Research Center Oulu, Oulu University Hospital and University of Oulu, Oulu, Finland. ⁷Department of Diagnostic Radiology, Oulu University Hospital, Oulu, Finland.

Received: 28 August 2013 Accepted: 10 June 2014

Published: 16 June 2014

References

1. Kanis JA, Oden A, Johansson H, Borgström F, Ström O, McCloskey E: FRAX and its applications to clinical practice. *Bone* 2009, **44**(5):734–743.
2. Glüer CC: A new quality of bone ultrasound research. *IEEE Trans Ultrason Ferroelectr Freq Control* 2008, **55**(7):1524–1528.
3. Marín F, González-Macias J, Díez-Pérez A, Palma S, Delgado-Rodríguez M: Relationship between bone quantitative ultrasound and fractures: a meta-analysis. *J Bone Miner Res* 2006, **21**(7):1126–1135.
4. Lewiecki EM, Compston JE, Miller PD, Adachi JD, Adams JE, Leslie WD, Kanis JA, Moayyeri A, Adler RA, Hans DB, Kendler DL, Díez-Pérez A, Krieg MA, Masri BK, Lorenc RR, Bauer DC, Blake GM, Josse RG, Clark P, Khan AA, FRAX® Position Development Conference Members: Official Positions for FRAX® Bone Mineral Density and FRAX® simplification from Joint Official Positions Development Conference of the International Society for Clinical Densitometry and International Osteoporosis Foundation on FRAX®. *J Clin Densitom* 2011, **14**(3):226–236.
5. Kilappa V, Moilanen P, Xu L, Nicholson PH, Timonen J, Cheng S: Low-frequency axial ultrasound velocity correlates with bone mineral density and cortical thickness in the radius and tibia in pre- and postmenopausal women. *Osteoporos Int* 2011, **22**(4):1103–1113.
6. Moilanen P, Nicholson PH, Kärkkäinen T, Wang Q, Timonen J, Cheng S: Assessment of the tibia using ultrasonic guided waves in pubertal girls. *Osteoporos Int* 2003, **14**(12):1020–1027.
7. Nicholson PH, Moilanen P, Kärkkäinen T, Timonen J, Cheng S: Guided ultrasonic waves in long bones: modelling, experiment and in vivo application. *Physiol Meas* 2002, **23**(4):755–768.
8. Määttä M, Moilanen P, Nicholson P, Cheng S, Timonen J, Jämsä T: Correlation of Tibial Low-Frequency Ultrasound Velocity with Femoral Radiographic Measurements and BMD in Elderly Women. *Ultrasound Med Biol* 2009, **35**(6):903–911.
9. Määttä M, Terho E, Jokinen H, Pulkkinen P, Korpelainen J, Heikkinen J, Keinänen-Kiukaanniemi S, Jämsä T, Korpelainen R: Lifestyle factors and site-specific risk of hip fracture in community dwelling older women – a 13-year prospective population-based cohort study. *BMC Musculoskeletal Disord* 2012, **13**(1):173.
10. Korpelainen R, Korpelainen J, Heikkinen J, Väänänen K, Keinänen-Kiukaanniemi S: Lifestyle factors are associated with osteoporosis in lean women but not in normal and overweight women: a population-based cohort study of 1222 women. *Osteoporos Int* 2003, **14**(1):34–43.
11. Podsiadlo D, Richardson S: The timed "Up & Go": a test of basic functional mobility for frail elderly persons. *J Am Geriatr Soc* 1991, **39**(2):142–148.

12. Orgee JM, Foster H, McCloskey EV, Khan S, Coombes G, Kanis JA: **A precise method for the assessment of tibial ultrasound velocity.** *Osteoporos Int* 1996, **6**(1):1–7.
13. Report of a WHO Study Group: **Assessment of fracture risk and its application to screening for postmenopausal osteoporosis.** *World Health Organ Tech Rep Ser* 1994, **843**:1–129.
14. Nguyen TV, Center JR, Eisman JA: **Bone mineral density-independent association of quantitative ultrasound measurements and fracture risk in women.** *Osteoporos Int* 2004, **15**(12):942–947.
15. Damilakis J, Papadokostakis G, Vrahoriti H, Tsagaraki I, Perisnakis K, Hadjipavlou A, Gourtsoyiannis N: **Ultrasound velocity through the cortex of phalanges, radius, and tibia in normal and osteoporotic postmenopausal women using a new multisite quantitative ultrasound device.** *Invest Radiol* 2003, **38**(4):207–211.
16. Hans D, Srivastav SK, Singal C, Barkmann R, Njeh CF, Kantorovich E, Glüer CC, Genant HK: **Does combining the results from multiple bone sites measured by a new quantitative ultrasound device improve discrimination of hip fracture?** *J Bone Miner Res* 1999, **14**(4):644–651.
17. Hans D, Genton L, Allaoua S, Pichard C, Slosman DO: **Hip fracture discrimination study: QUS of the radius and the calcaneum.** *J Clin Densitom* 2003, **6**(2):163–172.
18. Weiss M, Ben-Shlomo A, Hagag P, Ish-Shalom S: **Discrimination of proximal hip fracture by quantitative ultrasound measurement at the radius.** *Osteoporos Int* 2000, **11**(5):411–416.
19. Stegman MR, Heaney RP, Travers-Gustafson D, Leist J: **Cortical ultrasound velocity as an indicator of bone status.** *Osteoporos Int* 1995, **5**(5):349–353.
20. Augat P, Fan B, Lane NE, Lang TF, LeHir P, Lu Y, Uffmann M, Genant HK: **Assessment of bone mineral at appendicular sites in females with fractures of the proximal femur.** *Bone* 1998, **22**(4):395–402.
21. Talmant M, Kolta S, Roux C, Haguenaue D, Vedel I, Cassou B, Bossy E, Laugier P: **In vivo performance evaluation of bi-directional ultrasonic axial transmission for cortical bone assessment.** *Ultrasound Med Biol* 2009, **35**(6):912–919.
22. Durosier C, Hans D, Krieg MA, Ruffieux C, Cornuz J, Meunier PJ, Schott AM: **Combining clinical factors and quantitative ultrasound improves the detection of women both at low and high risk for hip fracture.** *Osteoporos Int* 2007, **18**(12):1651–1659.
23. Karjalainen JP, Riekkinen O, Töyräs J, Hakulinen M, Kröger H, Rikkinen T, Salovaara K, Jurvelin JS: **Multi-site bone ultrasound measurements in elderly women with and without previous hip fractures.** *Osteoporos Int* 2012, **23**(4):1287–1295.
24. Hans D, Durosier C, Kanis JA, Johansson H, Schott-Pethelaz AM, Krieg MA: **Assessment of the 10-year probability of osteoporotic hip fracture combining clinical risk factors and heel bone ultrasound: the EPISEM prospective cohort of 12,958 elderly women.** *J Bone Miner Res* 2008, **23**(7):1045–1051.
25. Knapp KM, Blake GM, Spector TD, Fogelman I: **Multisite quantitative ultrasound: precision, age- and menopause-related changes, fracture discrimination, and T-score equivalence with dual-energy X-ray absorptiometry.** *Osteoporos Int* 2001, **12**(6):456–464.
26. Moilanen P, Määttä M, Kilappa V, Xu L, Nicholson PH, Alén M, Timonen J, Jämsä T, Cheng S: **Discrimination of fractures by low-frequency axial transmission ultrasound in postmenopausal females.** *Osteoporos Int* 2012, **24**(2):723–730.

doi:10.1186/1471-2474-15-208

Cite this article as: Määttä et al.: Association between low-frequency ultrasound and hip fractures – comparison with DXA-based BMD. *BMC Musculoskeletal Disorders* 2014 **15**:208.

Submit your next manuscript to BioMed Central and take full advantage of:

- Convenient online submission
- Thorough peer review
- No space constraints or color figure charges
- Immediate publication on acceptance
- Inclusion in PubMed, CAS, Scopus and Google Scholar
- Research which is freely available for redistribution

Submit your manuscript at
www.biomedcentral.com/submit

