

Original Article

Five-Minute Cognitive Test as A New Quick Screening of Cognitive Impairment in The Elderly

Jie Zhang¹, Lijun Wang¹, Xia Deng¹, Guoqiang Fei¹, Lirong Jin¹, Xiaoli Pan¹, Liuhan Cai², Anthony D. Albano³, Chunjiu Zhong^{1,*}

¹Department of Neurology, Zhongshan Hospital; State Key Laboratory of Medical Neurobiology; Institute of Brain Science; Fudan University, Shanghai, China.

²Department of Psychometrics, Research, and Data, Measured Progress, Dover, NH 03820, USA

³Department of Educational Psychology, University of Nebraska-Lincoln, Lincoln, NE 68588, USA

[Received November 12, 2018; Revised January 14, 2019; Accepted January 15, 2019]

ABSTRACT: This study aims to develop a new evaluation method for quickly and conveniently screening cognitive impairment in the elderly. The five-minute cognitive test (FCT) was designed to capture deficits in five domains of cognitive abilities, including episodic memory, language fluency, time orientation, visuospatial function, and executive function. Subsequently, FCT efficiencies in differentiating normally cognitive ability from cognitive impairment were explored and compared with that of the Mini-Mental Status Evaluation (MMSE). Equipercentile equating method was utilized to create a crosswalk between scores of the FCT and MMSE. Further, the association of scores of the FCT and MMSE with hippocampal volumes was investigated. There were 241 subjects aged 60 years or above enrolled in this study, including 107 adults with cognitive abilities in normal range, 107 patients with mild cognitive impairment (MCI), and 27 patients with mild Alzheimer disease (AD). The AUC of FCT for detection of cognitive impairment (MCI and mild AD) was 0.885 (95% CI 0.838 to 0.922). The sensitivity and specificity of FCT for the diagnosis of cognitive impairment were 80.6% and 84.11 %, respectively. FCT's diagnostic performance was superior to that of MMSE in the same cohort. Mean completion time of FCT was 339.9 ± 67.7 seconds (5-6 min). In addition, a conversion table between scores on the FCT and MMSE was created. Further, the FCT scores were positively correlated with hippocampal volumes. The FCT is a novel, reliable, and valid cognitive screening test for the detection of dementia at early stages.

Key words: mild cognitive impairment, Alzheimer's disease, brief cognitive test, equipercentile equating method

As old population is dramatically growing, the detection of early cognitive deficit will become increasingly crucial. Effective cognitive screening test with quick and convenient merits will ensure recognition of early cognitive deficit and timely intervention [1, 2]. Cognitive screening test should have good sensitivity and specificity for detecting cognitive impairment at the early stage, including mild cognitive impairment (MCI) and mild dementia [3]. Given time pressure in clinical practice or

large-scale epidemiological studies, it would be more preferable if a cognitive screening tool can be completed in the minimum time possible. Despite the existence of numerous cognitive screening tools, several limitations need to be remedied [1, 2, 4], including low accuracy for diagnosing mild cognitive deficit [5-7] or a long time consumption [8-10]. Thus, the tradeoff between statistical robustness and administration time should be carefully

*Correspondence should be addressed to: Dr. Chunjiu Zhong, Department of Neurology, Zhongshan Hospital; State Key Laboratory of Medical Neurobiology; Institute of Brain Science; Fudan University, Shanghai 200032, China. Email address: zhongcj@163.com

Copyright: © 2019 Zhang J et al. This is an open-access article distributed under the terms of the [Creative Commons Attribution License](https://creativecommons.org/licenses/by/4.0/), which permits unrestricted use, distribution, and reproduction in any medium, provided the original author and source are credited.

weighted when novel cognitive screening tool is developed.

According to Jeremy Brown, short cognitive tests can be further categorized into three groups: (1) Short questionnaires, (2) Highly selective tests, and (3) Multi-domain tests [11]. Although short questionnaires or highly selective tests may take less than 5 minutes to administer [11, 12], multi-domain tests are the most useful tools for capturing deficits in a variety of cognitive domains, but typically at the cost of long administration time (usually > 10 minutes) [11]. Many screening tools are currently available but no tools meet the four important

requirements for widespread use in clinical practice or large-scale epidemiological studies — that is, capture a clinically acceptable range of cognitive domains, take short time to administer (around 5 minutes), have high accuracy for detecting cognitive impairment, and incorporate visual recall, which is the earliest deficits in Alzheimer’s disease (AD) patients [13]. In the present study, we developed a novel cognitive screening tool, Five-minute cognitive test (FCT), to achieve these required qualities.

Five-minute Cognitive Test (FCT)

Instruction page

<p>1. Memory <u>Administration:</u> Trial 1: Examiner: “This is a memory test. I will show you some pictures and ask you to identify. Try your best to remember because I will ask you to recall those pictures several minutes later”. Beginning on the picture 1 shown one by one on the picture page, point to each picture and say: “Tell me the name of this picture”. If the participant fails to identify the name of the picture or responds an incorrect answer, the examiner tells the correct name immediately. Correct responses for pictures: 1: elephant. 2: balloon. 3: thumb. 4: boat. 5: fan. 6: comb. 7: pear. 8: spider. Trial 2: While looking at the picture page, the participant is asked to name each picture again with its category cue given by the examiner (e.g., examiner: “This is a kind of animal, what is it?” participant: elephant). If necessary, naming is aided by the examiner. Pictures with category cues: 1: elephant (animal). 2: balloon (toy). 3: thumb (body part). 4: car (mode of transportation). 5: fan (domestic appliance). 6: comb (Daily commodity). 7: pear (fruit). 8: spider (arthropod) <u>Scoring:</u> No points are given for Trial 1 and Trial 2.</p> <p>2. Language Fluency <u>Administration:</u> Examiner: “Please name as many vegetables as you can in 1 minute”. <u>Scoring:</u> 0-7 words=0 points; 8-10 words=1 point; ≥11 words=2 points.</p> <p>3. Orientation to Time <u>Administration:</u> Examiner: “What is the Year? Month? Date?” <u>Scoring:</u> Give 1 point to each correct answer.</p> <p>4. Clock Drawing <u>Administration:</u> Examiner: “Draw a clock. Put in all the numbers and set the time to 10 past 11”. <u>Scoring:</u> One point is given for each of the following four criteria: • Contour (1 pt.): the clock face must be a circle with only minor distortion acceptable (e.g., slight imperfection on closing the circle); • Numbers (2 pt.): all clock numbers must be present with no additional numbers (1 pt.); numbers must be in the correct order and placed in the approximate quadrants on the clock face (1 pt.); numbers can be placed outside the circle contour. • Hands (1 pt.): there must be two hands jointly indicating the correct time; the hour hand must be clearly shorter than the minute hand; hands must be centered within the clock face with their junction close to the clock center.</p> <p>5. Executive Functions <u>Administration:</u> Examiner: “Here are four arrows pointing at different directions. This is “right”, “up”, “left”, and “down” (with your finger moving from left to right). Now please put these arrows in numerical order according to the sequence of up, down, left and right. Below the arrow of “up” is “1”, which has already been filled up for you. Now please fill in other numbers. Do you understand? If not, I will explain again”. <u>Scoring:</u> Give 1 point to each correct answer.</p> <p>6. Delayed Recall <u>Administration:</u> Examiner: “I showed some pictures to you several minutes before, which I asked you to remember. Tell me as many of those pictures as you can remember”. Category cues are presented to elicit recall only of items that are not retrieved by free recall. <u>Scoring:</u> one point is given for each freely recalled picture and 0.5 points for pictures recalled with cues (0-8).</p>
--

Figure 1. Instruction page of Five-minute Cognitive test.

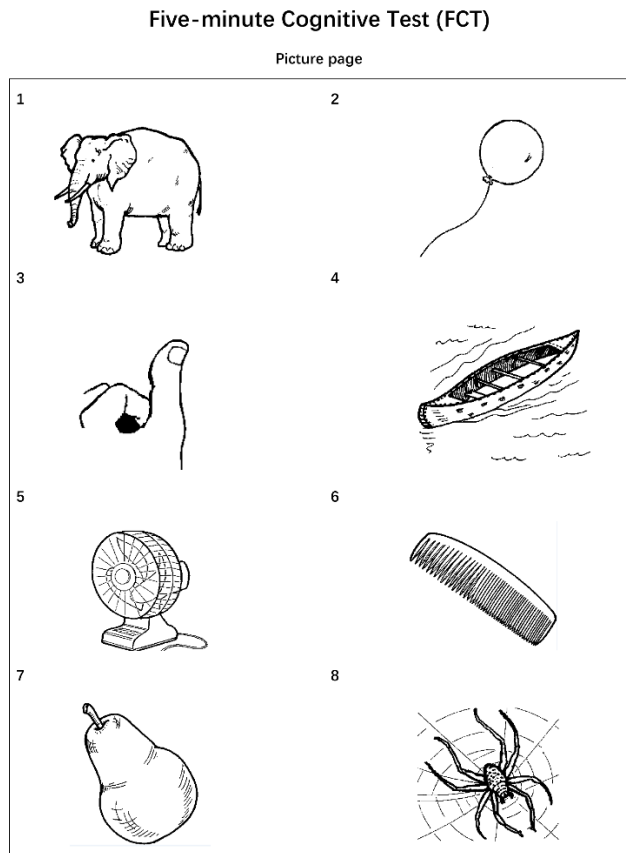


Figure 2. Picture page of Five-minute Cognitive test.

First, we compared the diagnostic performance of FCT and Mini-Mental State Examination (MMSE) for discriminating cognitive ability in normal range from mild cognitive decline. Second, equipercentile equating method was utilized to create a crosswalk between scores of the FCT and MMSE. Third, the relationships between the FCT scores and other neuropsychological assessments were examined. Finally, we investigated the association of the FCT scores with hippocampal volumes in non-demented individuals.

MATERIALS AND METHODS

The study was approved by the Committee on Medical Ethics of Zhongshan Hospital, Fudan University.

FCT design

The FCT was developed in a multiphase study and the final version was established to evaluate five cognitive domains, including episodic memory, language fluency, time orientation, visuospatial function, and executive function (Fig. 1-3). Eight culturally neutral pictures were

selected from the International Picture Naming Project as test items of episodic memory. The FCT scores range from 0 to 20 and lower scores reflect worse cognitive performance.

Subjects

There were 360 subjects aged 60 years or above enrolled in this study, including 226 individuals with cognitive abilities in normal range, 107 patients with MCI and 27 patients with mild AD. Written informed consents were obtained from all participants or authorized representatives.

Five-minute Cognitive Test (FCT)

Memory		Points																														
Refer to picture page.		No Points																														
Category Fluency Please name as many vegetables as you can in 1 minute. N _____ (0-7 words=0 point; 8-10 words=1 point; ≥11 words=2 points)		_____ / 2																														
Orientation to time year _____ month _____ date _____		_____ / 3																														
Draw Clock (Ten past eleven)	Executive Function <div style="text-align: center;"> ⇒ ↑ ⇐ ↓ </div> <div style="text-align: center;"> () (1) () () </div>	_____ / 7																														
Delayed Recall																																
	<table border="1" style="width: 100%; border-collapse: collapse;"> <tr> <th></th> <th>1</th> <th>2</th> <th>3</th> <th>4</th> <th>5</th> <th>6</th> <th>7</th> <th>8</th> <th>Score</th> </tr> <tr> <td>Free Recall (1 point)</td> <td></td> <td></td> <td></td> <td></td> <td></td> <td></td> <td></td> <td></td> <td></td> </tr> <tr> <td>Cued Recall (0.5 points)</td> <td></td> <td></td> <td></td> <td></td> <td></td> <td></td> <td></td> <td></td> <td></td> </tr> </table>		1	2	3	4	5	6	7	8	Score	Free Recall (1 point)										Cued Recall (0.5 points)										_____ / 8
	1	2	3	4	5	6	7	8	Score																							
Free Recall (1 point)																																
Cued Recall (0.5 points)																																
Total Score:		/ 20																														

Figure 3. The FCT test.

All subjects had abilities of intact understanding and fluent expression in Mandarin Chinese and received 6 years or more of education. Subjects with any severe neurological diseases but AD and MCI were excluded.

The cognitive ability in normal range was defined as subjects having total 24 scores or above assayed by MMSE [5] and 0 score of Clinical Dementia Rating (CDR)[14]. MCI patients had a score of 24 or higher on the MMSE, a score of 0 or 0.5 on CDR, a subjective cognitive complaint, objective cognitive impairment as examined by a comprehensive battery of neuropsychological assessments, essentially preserved activities of daily living, and were not demented [3, 15]. The mild AD group met the National Institute of Neurological and Communicative Disorders and Stroke

and AD and Related Disorders Association criteria for probable AD [16] and had a score of 0.5 or 1 on the CDR.

Neuropsychological and clinical assessments

Participants received a battery of cognitive and clinical assessments, including FCT, MMSE [5], Auditory Verbal Learning Test (AVLT)[17], Rey-Osterrieth Complex Figure Test (CFT)[18], Boston Naming Test (BNT-30), Animal Fluency Test (AFT)[19], Trail Making Test A and B (TMT-A, TMT -B)[20], Symbol Digit Modalities Test (SDMT)[21], CDR, Activities of Daily Living scale (ADL), Geriatric Depression Scale (GDS-15)[22]. Each participant with MCI or mild AD received a CT/MRI scanning.

MRI data acquisition

The data of high-resolution structural MRI were acquired from a 3.0 Tesla Siemens Verio MRI scanner. Participants were scanned using a three-dimensional T1-weighted MPRAGE sequence at the Department of Radiology, Zhongshan Hospital, Fudan University. MRI series included T1-weighted 3D fast, spoiled gradient recalled

echo images and other sequences such as T2-weighted and FLAIR images to visualize focal lesions of cortical or white matter. The scanning parameters were as follows: TR/TE: 1900/2.5 ms, flip angle: 9°, slice thickness 1 mm, 176 contiguous sagittal slices, field of view 256 mm, voxel resolution 1 × 1 × 1 mm, 8-channels head receiver coil. Each 3-D T1-weighted MPRAGE sequence scan lasted for 4 min and 18 sec. All subjects were right-handed.

Hippocampal volumes

CAT12 toolbox (C. Gaser, Structural Brain Mapping group, Jena University Hospital, Jena, Germany) implemented in SPM12 (www.fil.ion.ucl.ac.uk) were utilized to perform the voxel-based morphometry (VBM) analysis. The morphometric analysis by regions of interest (ROIs) was applied to extract the data of hippocampal volume. The methods have been described previously [23, 24] and can be found at the CAT12 website (www.neuro.uni-jena.de/cat12/CAT12-Manual.pdf).

Table 1. Demographics and clinical characteristics according to diagnosis.

Characteristics	CN (n = 107)	MCI (n = 107)	Mild AD (n = 27)	P value
Age, years	69.6 ± 5.4	69.7 ± 5.7	72 ± 7.9	0.149
Male/Female, n	40/67	39/68	10/17	0.99
Education, years	11.7 ± 2.8	11.4 ± 2.9	9.9 ± 4.14 \$	0.02
CDR	0 ± 0.05	0.36 ± 0.22 #	0.96 ± 0.1 \$, &	<0.001
ADL	20.2 ± 0.4	20.8 ± 0.8 #	24.6 ± 2.9 \$, &	<0.001
MMSE	27.9 ± 1.28	26.3 ± 1.9 #	20.1 ± 2.9 \$, &	<0.001
FCT	17.8 ± 1.2	14.9 ± 2.8 #	8 ± 3.2 \$, &	<0.001
AVLT- delayed recall	5.94 ± 2.05	2.91 ± 2.08	/	<0.001
Animal fluency	16.7 ± 3.63	13.9 ± 3.71	/	<0.001
BNT-30	24.2 ± 3.28	21.7 ± 3.76	/	<0.001
TMT-A	56.1 ± 13.1	72.2 ± 25.4	/	<0.001
TMT-B	153 ± 44	201 ± 59.3	/	<0.001
CFT	30.3 ± 2.92	26.4 ± 4.72	/	<0.001
SDMT	37.9 ± 7.62	30.9 ± 9.33	/	<0.001

Abbreviations: CN: Cognitively normal; MCI: Mild cognitive impairment; AD: Alzheimer's disease; CDR: Clinical dementia rating scale; ADL: Activities of Daily Living scale; MMSE: Mini-mental state examination; FCT: Five-minute cognitive test. AVLT: Auditory Verbal Learning Test; BNT-30: Boston Naming Test-30; TMT-A: Trail Making Test A; TMT-B: Trail Making Test B; CFT: Rey-Osterrieth Complex Figure Test; SDMT: Symbol Digit Modalities Test.

that is marked behind "MCI group" represents $p < 0.05$ when the data from CN group and MCI group were compared.

\$ that is marked behind "AD group" represents $p < 0.05$ when the data from CN group and AD group were compared.

& that is marked behind "AD group" represents $p < 0.05$ when the data from MCI group and AD group were compared.

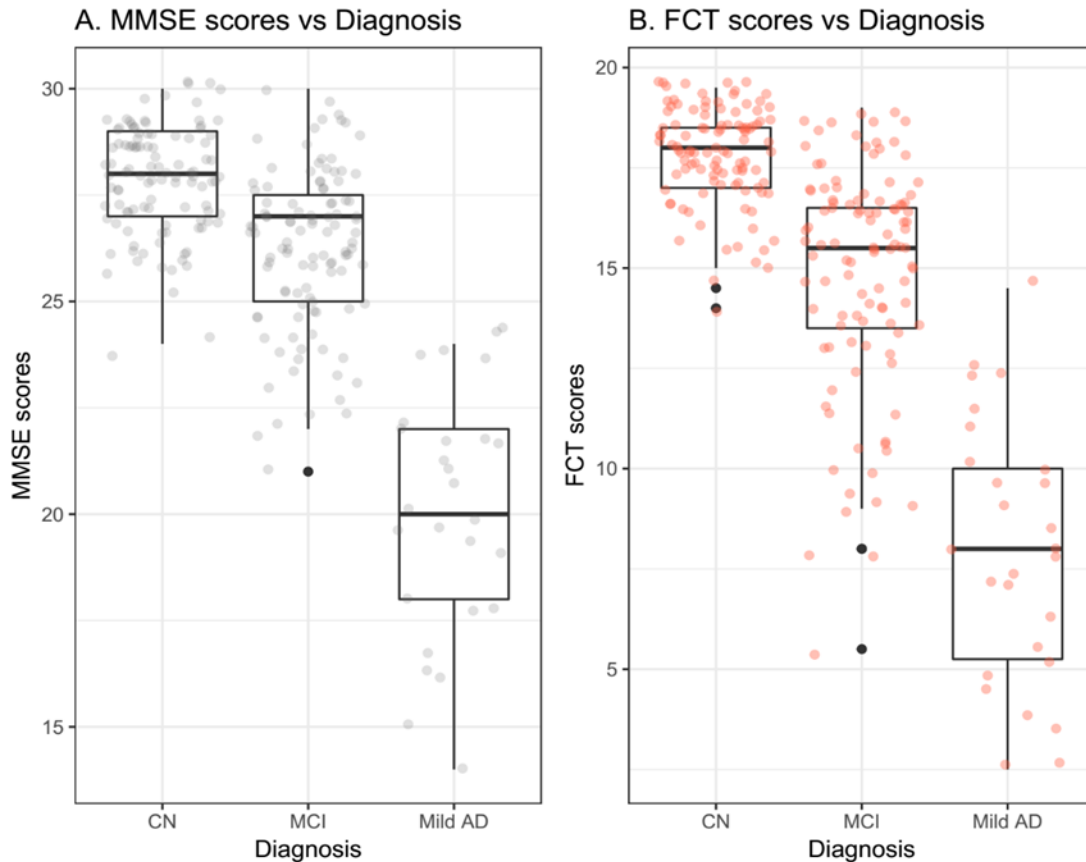


Figure 4. FCT and MMSE scores in three diagnostic groups. Abbreviations: CN: Cognitively normal; MCI: Mild cognitive impairment; AD: Alzheimer's disease; MMSE: Mini-mental state examination; FCT: Five-minute cognitive test.

Statistical analysis

The differences in continuous variables between groups were identified using the F-test. The Pearson χ^2 test was used to compare the distributions of categorical variables among healthy controls, patients with MCI and mild AD. Diagnostic performance was examined using the area under the curve (AUC), sensitivity, and specificity. The Intraclass Correlation Coefficient (ICC) was utilized to assess the inter-rater and test-retest reliability. Additionally, FCT scores were equated to MMSE scores using the equipercenile equating method [25, 26], which has been applied to equate a variety of standardized tests [27-29]. All data analyses were conducted with R statistical software (R version 3.3.3). The level of statistical significance was set at $p < 0.05$.

RESULTS

Demographic and clinical information

Initially, there was a total of 360 subjects, including 226 subjects with normal cognition, 107 subjects with MCI and 27 patients with mild AD. However, we found that controls have significantly higher education than subjects with MCI (12 ± 2.9 vs 11.4 ± 2.9 ; $p < 0.001$). It is well known that education is a factor that affects the scores of the cognitive assessments. Thus, we applied propensity score matching (PSM) to minimize confounding biases [30, 31]. Through PSM with ratio of 1 to 1 (Controls: MCIs), a total of 107 healthy controls were selected from the initial 226 healthy controls. The demographic and clinical data of 241 participants were listed in Table 1.

Relationship between FCT scores and demographics

The FCT scores were significantly correlated with age ($r = -0.21$, $p < 0.001$) and educational year ($r = 0.23$, $p < 0.001$) in the whole sample. There was no significant difference in FCT score between males and females ($p > 0.05$).

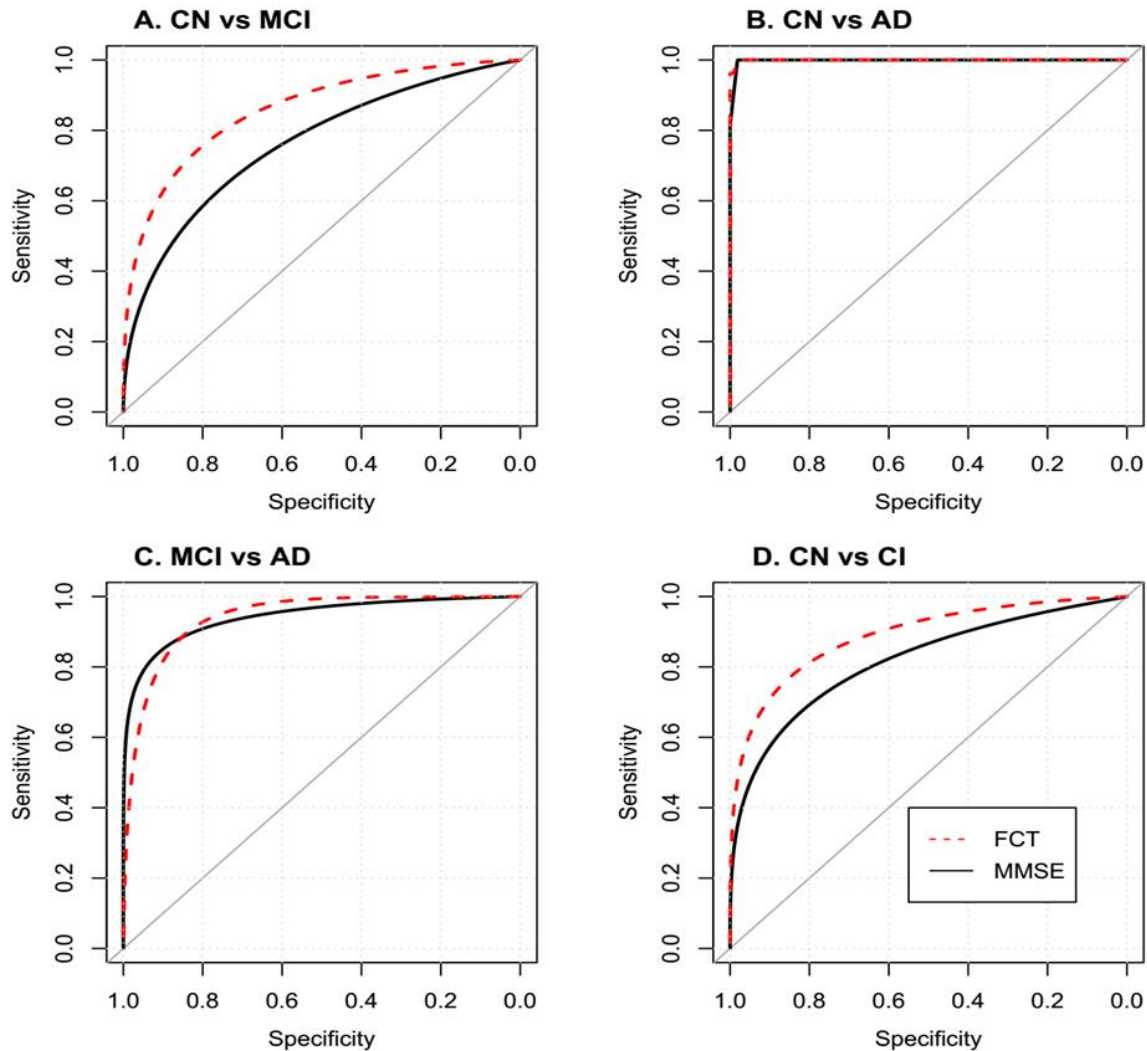


Figure 5. ROC analysis of FCT and MMSE. Abbreviations: CN: Cognitively normal; MCI: Mild cognitive impairment; AD: Alzheimer's disease; CI: Cognitively impaired; MMSE: Mini-mental state examination; FCT: Five-minute cognitive test.

The completion time of FCT

The average administration time was 313.3 ± 41.6 s in individuals with cognitive abilities in normal range, 360 ± 61.7 s in patients with MCI, 466.5 ± 96.4 s in patients with mild AD, respectively.

FCT and MMSE scores in three diagnostic groups

As shown in Table 1 and Figure 4, the average FCT scores were 17.8 ± 1.2 in normal controls, 14.9 ± 2.8 in patients with MCI, and 8 ± 3.2 in patients with mild AD, respectively. The average MMSE scores were 27.9 ± 1.28 in normal controls, 26.3 ± 1.9 in patients with MCI, and 20.1 ± 2.9 in patients with mild AD, respectively.

Diagnostic performance of FCT and MMSE

For discriminating CN from MCI (Fig. 5A), the AUC of FCT was 0.856 (0.802 – 0.900) with sensitivity of 75.7 % (66.5 % to 83.5 %) and specificity of 84.11 % (75.8 % to 90.5 %) when the cut-off point was set to 16.5. The AUC of MMSE was 0.758 (0.695 – 0.814) with sensitivity of 74.8 % (65.4 % to 82.7 %) and specificity of 63.6 % (53.7 % to 72.6 %) when the cut-off point was set to 27.

For discriminating between CN and AD (Fig. 5B), the AUC of FCT was 1 (0.972 – 1) with sensitivity of 100 % (87.2 % to 100 %) and specificity of 98.13 % (93.4 % to 99.8 %) when the cut-off point was set to 14.5. The AUC of MMSE was 0.998 (0.969 – 1) with sensitivity of 100 % (87.2 % to 100 %) and specificity of 98.13 % (93.4 % to 99.8 %) when the cut-off point was set to 24.

Table 2. Equivalent MMSE scores are shown for possible scores on the FCT.

FCT	Equivalent MMSE	FCT	Equivalent MMSE	FCT	Equivalent MMSE	FCT	Equivalent MMSE
0	10	5.5	18	11	23	16.5	27
0.5	10	6	19	11.5	24	17	27
1	11	6.5	20	12	24	17.5	28
1.5	12	7	21	12.5	24	18	28
2	12	7.5	21	13	24	18.5	29
2.5	13	8	22	13.5	25	19	29
3	14	8.5	22	14	25	19.5	30
3.5	15	9	22	14.5	25	20	30
4	16	9.5	23	15	26		
4.5	17	10	23	15.5	26		
5	17	10.5	23	16	26		

Abbreviations: MMSE: Mini-mental state examination; FCT: Five-minute cognitive test.

For discriminating MCI from AD (Figure 5.C), the AUC of FCT was 0.942 (0.888 – 0.975) with sensitivity of 96.3 % (81 % to 99.9 %) and specificity 82.24 % (73.7% to 89 %) when the cut-off point was set to 12.5. The AUC of MMSE was 0.97 (0.925 – 0.992) with a sensitivity of 100 % (87.2 % to 100 %) and specificity 83.2 % (74.7 % to 89.7 %) when the cut-off point was set to 24.

For discriminating between CN and CI (MCI + AD; Figure 5.D), the AUC of FCT was 0.885 (0.838 – 0.922) with sensitivity of 80.6 % (72.9 % to 86.9 %) and specificity of 84.11 % (75.8 % to 90.5 %) when the cut-off point was set to 16.5. The AUC of MMSE was 0.806 (0.751 – 0.854) with sensitivity of 59.7 % (50.9 % to 68.1 %) and specificity of 85.1 % (76.9 % to 91.2 %) when the cut-off point was set to 26.

Inter-rater and test-retest reliability

To evaluate the inter-rater reliability of FCT, the data were collected twice from a subsample of 22 (CN and MCI) by two raters (Zhang and Wang). The average interval was 48.7 ± 20.9 days. Intraclass correlation coefficient (ICC) is 0.91, indicating an excellent inter-rater reliability. Regarding the test-retest reliability, the data were collected twice from another subsample of 16 (CN and MCI) by the same rater (Zhang). The average interval was 64.7 ± 17.7 days. ICC is 0.86, indicating a good test-retest reliability.

Crosswalk between corresponding scores of the FCT and MMSE

The equipercenile equating analysis was utilized and equivalent MMSE scores were shown for possible scores of the FCT (Table 2). In addition, a plot of the equipercenile equivalent scores on FCT and MMSE is demonstrated in Figure 6. For instance, a score of 12.5 on the FCT is equivalent to a score of 24 on the MMSE.

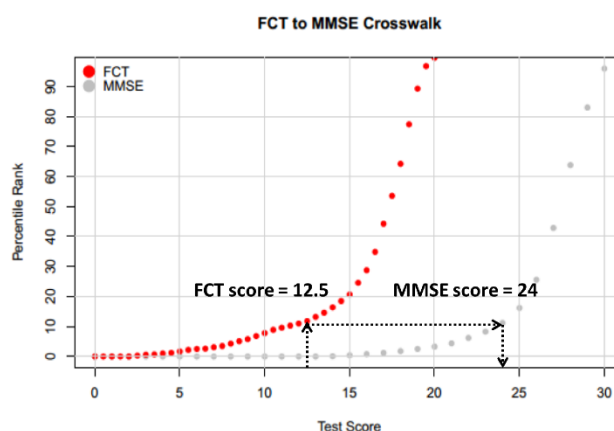


Figure 6. A plot of the equipercenile equivalent scores on the MMSE and FCT. Abbreviations: MMSE: Mini-mental state examination; FCT: Five-minute cognitive test.

Correlations between the FCT scores and other neuropsychological assessments

In these correlational analyses, there was a total of 333 non-demented individuals (226 individuals with normal cognition and 107 individuals with MCI). Spearman's correlation analyses were utilized to examine the

relationships between the FCT scores and other neuropsychological assessments (Figure 7). The FCT scores were positively associated with AVLT delay recall ($\rho = 0.46$, $p < 0.001$), animal fluency ($\rho = 0.33$, $p < 0.001$), BNT-30 ($\rho = 0.38$, $p < 0.001$), CFT ($\rho = 0.32$, $p <$

0.001) and SDMT ($\rho = 0.36$, $p < 0.001$) scores. Further, the FCT scores were negatively associated with TMT-A ($\rho = -0.33$, $p < 0.001$) and TMT-B ($\rho = -0.38$, $p < 0.001$) scores.

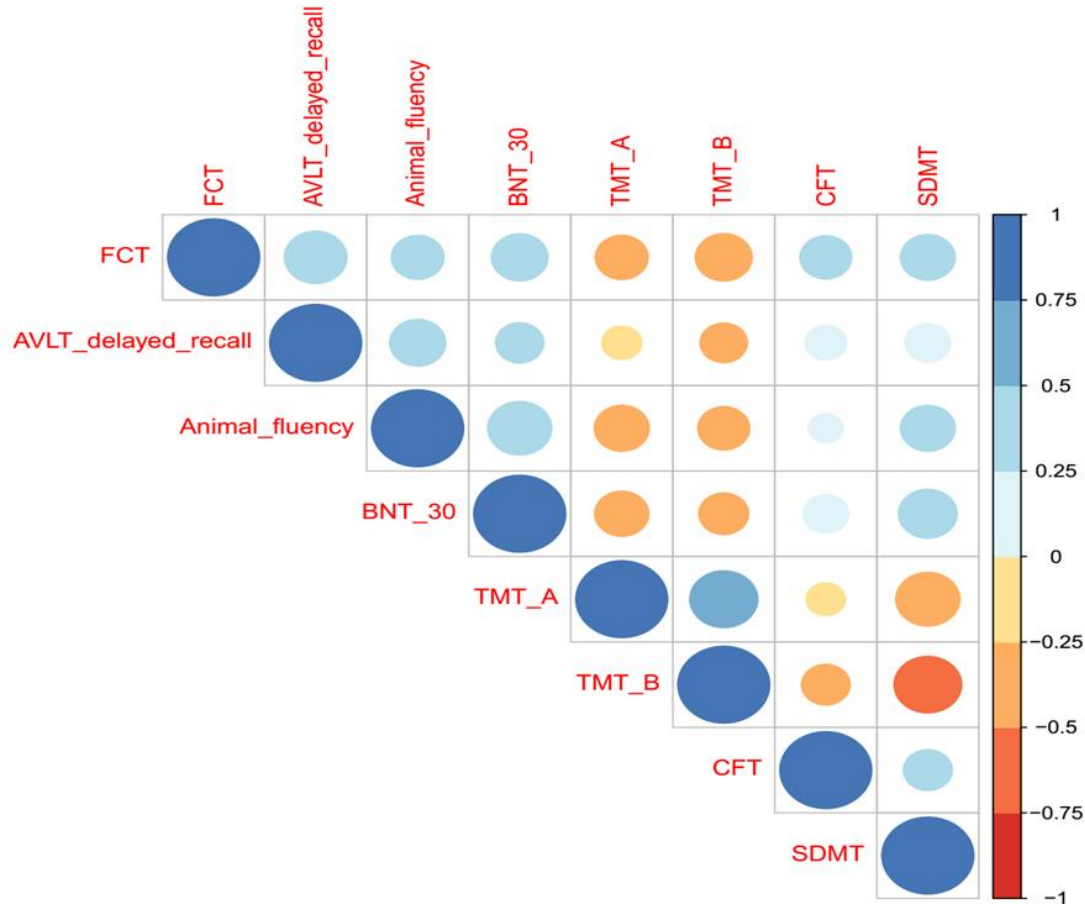


Figure 7. Correlations between the FCT scores and other cognitive domains. Abbreviation: FCT: Five-minute cognitive test. AVLT: Auditory Verbal Learning Test; BNT-30: Boston Naming Test-30; TMT-A: Trail Making Test A; TMT-B: Trail Making Test B; CFT: Rey-Osterrieth Complex Figure Test; SDMT: Symbol Digit Modalities Test.

Correlations of the FCT and MMSE scores with hippocampal volumes in non-demented elderly

In a subsample of 62 non-demented elderly (including 32 individuals with cognitive abilities in normal range and 30 individuals with MCI) with hippocampal volume data, the correlations of the FCT and MMSE scores with hippocampal volumes were evaluated using the *cocor* package [32]. The results showed that both FCT ($\rho = 0.406$, $p = 0.0005$) and MMSE ($\rho = 0.346$, $p = 0.008$) scores were positively correlated with hippocampal volumes while there was no significant difference in the magnitude of two correlations ($p > 0.05$; Fig. 8).

DISCUSSION

In this study, we developed a new cognitive screening test that can quickly and accurately identify cognitive deficits. The average administration time of FCT was found to be 339.9 ± 67.7 s (5-6 min) in the whole sample. The validity of FCT for discriminating subjects with cognitive abilities in normal range from mild cognitive impairment (MCI and mild AD) was found to be clinically acceptable and superior to MMSE in sensitivity (80.6% vs 59.7%), specificity (84.11 % vs 85.1%), and AUC (0.885 vs 0.806). In addition, equipercenile equating method was used to create a conversion table, which enables easy and direct comparison of scores on FCT and MMSE.

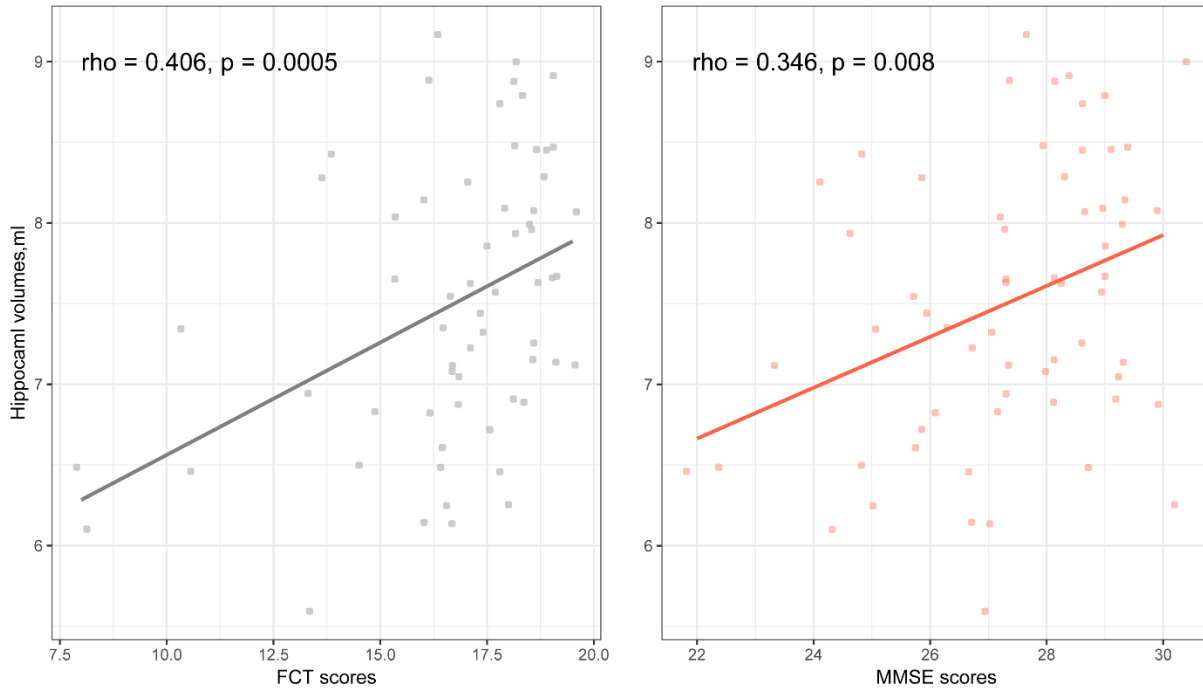


Figure 8. Correlations of FCT and MMSE scores with Hippocampal volumes in non-demented elderly. Abbreviations: MMSE: Mini-mental state examination; FCT: Five-minute cognitive test.

The FCT was designed to capture deficits in a broad range of cognitive domains, including episodic memory, language fluency, time orientation, visuospatial function, and executive function. Episodic memory deficits have been found to predict progression to AD among subjects with MCI [33]. Therefore, the greater emphasis on episodic memory places the FCT at an advantage over the other existing cognitive screening tests for the early detection of AD, the most common type of dementia [34]. In addition, compared to MMSE, the FCT includes more robust measures of executive and visuospatial function, which may contribute to the reduction of practice and ceiling effects.

Table 3. Demographic and clinical information of 62 non-demented elderly.

Variables	Overall sample (n = 62)
Age, y	69.4 ± 5.6
Female gender, n (%)	45 (72.6)
Education, y	12 ± 2.8
FCT	16.7 ± 2.5
MMSE	27.3 ± 1.9
Hippocampal volume, ml	7.5 ± 0.9

Abbreviations: MMSE: Mini-mental state examination; FCT: Five-minute cognitive test.

Because the MMSE has been extensively used in the cognitive assessment of older people in both clinical research and practice, conversion scores between FCT and MMSE will facilitate the adoption of the FCT. The linkage between FCT scores to MMSE scores is helpful to interpret individual performance and thus facilitate use of this new cognitive screening test. Our study showed that there is a good crosswalk between corresponding scores of the FCT and MMSE. For example, an FCT score of 12.5 is equivalent to a MMSE score of 24 (Fig. 6).

Finally, to examine whether the FCT scores are sensitive to changes in AD-related brain region, Spearman’s correlation test was conducted to investigate the association of the FCT scores with hippocampal volumes in non-demented elderly. Our data found a positive correlation between the FCT scores and hippocampal volumes ($r = 0.406, p = 0.0005$), which play an important role in episodic memory [35-37] and also correlates to MCI [38] and AD dementia [39]. This may be explained by the fact that the FCT was designed with a heavy emphasis on episodic memory (8 out of 20 points). Further, previous studies reported a specific memory profile in AD patients, which is characterized by a diminished free recall ability that is only marginally ameliorated by cueing [40, 41]. These neuropsychological findings have also been integrated into the development of the FCT. The cued recall technique, utilized in the FCT, can isolate the amnesic syndrome of the medial temporal

type [41, 42]. In future studies, it would be very important to determine the exact value of the FCT scores in combination with hippocampal volumes for predicting cognitive decline and conversion from MCI to AD dementia.

The current study has several important clinical implications. First, given the growing prevalence of cognitive impairment, rapid, efficient, and valid cognitive screening tests are essential. However, most of the existing brief cognitive tests were designed for use in western developed countries and therefore pose application problems when applied in Chinese people [43]. Translation into Chinese may help alleviate this issue, although the translation process often contributes to the alterations of the original neuropsychological properties. Thus, brief cognitive tests that transcend language and cultural barriers are needed. In an effort to circumvent the need to translate to other languages, items of FCT were designed to be as culture-neutral as possible. Second, previous studies found that a picture-based memory test can discriminate between normal controls and patients with AD and predict progression from MCI to AD with high sensitivity and specificity [33, 40]. These neuropsychological findings should be integrated into the development of novel screening tools. Thus, for the FCT, the recall of pictures rather than words was used to capture deficit in episodic memory. This design may hopefully facilitate the adoption of the FCT in other non-Chinese speaking countries. Finally, most of popular screening tools take ten minutes or more to complete [5, 8]. The cognitive screening tests with shorter administration time would be more desirable when used in the doctor's office or large-scale epidemiological studies.

There are several limitations that should be addressed. First, in this study, participants were eligible if they had 6 years or more of education. This limits our ability to generalize our findings to other population with less educational levels. This limitation should be remedied in further studies. Second, because the items of episodic memory were pictured-based, the FCT cannot be administered to subjects with severe visual impairment. The braille version of FCT should be developed in the future. Third, the sample size of the AD group is relatively small. Further studies with larger sample size of AD patients are warranted.

In conclusion, the FCT provides an alternative instrument and is superior to MMSE in discriminating normal cognitive abilities from mild cognitive impairment. Further, there is a good crosswalk between FCT and MMSE scores using equipercntile equating as well as positive correlation between FCT scores and hippocampal volume. These findings may facilitate the adoption of FCT in clinical research and practice.

Competing interests

Author CZ holds shares of Shanghai Rixin Bitech co, LTD, which dedicates to develop drugs for preventing and treating AD. Other authors declare no competing financial interests.

Acknowledgements

This study was supported by grants from the National Key Research and Development Program Foundation of China (2016YFC1306403), the National Natural Science Foundation of China (91332201, 81071019, 81500907, 31471027), and the Natural Science Foundation of Shanghai (13JC1401501).

References

- [1] Lonie JA, Tierney KM, Ebmeier KP (2009). Screening for mild cognitive impairment: a systematic review. *Int J Geriatr Psychiatry*, 24:902-915.
- [2] Cullen B, O'Neill B, Evans JJ, Coen RF, Lawlor BA (2007). A review of screening tests for cognitive impairment. *J Neurol Neurosurg Psychiatry*, 78:790-799.
- [3] Petersen RC, Smith GE, Waring SC, Ivnik RJ, Tangalos EG, Kokmen E (1999). Mild cognitive impairment: clinical characterization and outcome. *Arch Neurol*, 56:303-308.
- [4] Ozer S, Young J, Champ C, Burke M (2016). A systematic review of the diagnostic test accuracy of brief cognitive tests to detect amnesic mild cognitive impairment. *Int J Geriatr Psychiatry*, 31:1139-1150.
- [5] Folstein MF, Folstein SE, McHugh PR (1975). "Mini-mental state". A practical method for grading the cognitive state of patients for the clinician. *J Psychiatr Res*, 12:189-198.
- [6] Beinhoff U, Hilbert V, Bittner D, Gron G, Riepe MW (2005). Screening for cognitive impairment: a triage for outpatient care. *Dement Geriatr Cogn Disord*, 20:278-285.
- [7] Borson S, Scanlan JM, Watanabe J, Tu SP, Lessig M (2005). Simplifying detection of cognitive impairment: comparison of the Mini-Cog and Mini-Mental State Examination in a multiethnic sample. *J Am Geriatr Soc*, 53:871-874.
- [8] Nasreddine ZS, Phillips NA, Bedirian V, Charbonneau S, Whitehead V, Collin I, et al. (2005). The Montreal Cognitive Assessment, MoCA: a brief screening tool for mild cognitive impairment. *J Am Geriatr Soc*, 53:695-699.
- [9] Kandiah N, Zhang A, Bautista DC, Silva E, Ting SK (2016). Early detection of dementia in multilingual populations: Visual Cognitive Assessment Test (VCAT). *J Neurol Neurosurg Psychiatry*, 87:156-160.
- [10] Mioshi E, Dawson K, Mitchell J, Arnold R, Hodges JR (2006). The Addenbrooke's Cognitive Examination Revised (ACE-R): a brief cognitive test battery for

- dementia screening. *Int J Geriatr Psychiatry*, 21:1078-1085.
- [11] Brown J (2015). The use and misuse of short cognitive tests in the diagnosis of dementia. *J Neurol Neurosurg Psychiatry*, 86:680-685.
- [12] Rakusa M, Jensterle J, Mlakar J (2018). Clock Drawing Test: A Simple Scoring System for the Accurate Screening of Cognitive Impairment in Patients with Mild Cognitive Impairment and Dementia. *Dement Geriatr Cogn Disord*, 45:326-334.
- [13] Lindeboom J, Schmand B, Tulner L, Walstra G, Jonker C (2002). Visual association test to detect early dementia of the Alzheimer type. *J Neurol Neurosurg Psychiatry*, 73:126-133.
- [14] Morris JC (1993). The Clinical Dementia Rating (CDR): current version and scoring rules. *Neurology*.
- [15] Petersen RC (2004). Mild cognitive impairment as a diagnostic entity. *J Intern Med*, 256:183-194.
- [16] McKhann G, Drachman D, Folstein M, Katzman R, Price D, Stadlan EM (1984). Clinical diagnosis of Alzheimer's disease Report of the NINCDS-ADRDA Work Group* under the auspices of Department of Health and Human Services Task Force on Alzheimer's Disease. *Neurology*, 34:939-939.
- [17] Guo Q, Lv C, Hong Z (2001). Reliability and validity of auditory verbal learning test on Chinese elderly patients. *J of Chinese Ment Health*, 15:13-15.
- [18] Guo Q, Chuanzhen L, Hong Z (2000). Application of Rey-Osterrieth complex figure test in Chinese normal old people. *Chin J Clin Psych*, 8. 205-207.
- [19] Zhao Q, Guo Q, Shi W, Zhou Y, Hong Z (2007). Category verbal fluency test in identification and differential diagnosis of dementia. *Chin J Clin Psych*, 3:241-245.
- [20] Lu J, Guo Q, Hong Z, Shi W, Lv C (2006). Trail Making Test Used by Chinese Elderly Patients with Mild Cognitive Impairment and Mild Alzheimer's Dementia. *Chin J Clin Psych*, 14:118.
- [21] Smith A (1982). Symbol digit modalities test: Western Psychological Services Los Angeles, CA.
- [22] Sheikh JI, Yesavage JA (1986). Geriatric Depression Scale (GDS): recent evidence and development of a shorter version. *Clinical Gerontologist: J Aging Ment Health*. 5(1-2), 165-173.
- [23] Coppola G, Petolicchio B, Di Renzo A, Tinelli E, Di Lorenzo C, Parisi V, et al. (2017). Cerebral gray matter volume in patients with chronic migraine: correlations with clinical features. *J Headache Pain*, 18:115.
- [24] Besteher B, Gaser C, Langbein K, Dietzek M, Sauer H, Nenadic I (2017). Effects of subclinical depression, anxiety and somatization on brain structure in healthy subjects. *J Affect Disord*, 215:111-117.
- [25] Roalf DR, Moberg PJ, Xie SX, Wolk DA, Moelter ST, Arnold SE (2013). Comparative accuracies of two common screening instruments for classification of Alzheimer's disease, mild cognitive impairment, and healthy aging. *Alzheimers Dement*, 9:529-537.
- [26] Kolen MJ, Brennan RL (1995). Test equating : methods and practices. Springer, 16:193-215.
- [27] van Steenoven I, Aarsland D, Hurtig H, Chen-Plotkin A, Duda JE, Rick J, et al. (2014). Conversion between mini-mental state examination, montreal cognitive assessment, and dementia rating scale-2 scores in Parkinson's disease. *Mov Disord*, 29:1809-1815.
- [28] Roalf DR, Moore TM, Mechanic-Hamilton D, Wolk DA, Arnold SE, Weintraub DA, et al. (2017). Bridging cognitive screening tests in neurologic disorders: A crosswalk between the short Montreal Cognitive Assessment and Mini-Mental State Examination. *Alzheimers Dement*, 13:947-952.
- [29] Fong TG, Fearing MA, Jones RN, Shi P, Marcantonio ER, Rudolph JL, et al. (2009). Telephone interview for cognitive status: Creating a crosswalk with the Mini-Mental State Examination. *Alzheimers Dement*, 5:492-497.
- [30] Adelson JL (2013). Educational research with real-world data: Reducing selection bias with propensity scores. *Practical Assessment, Research & Evaluation*, 18:2.
- [31] Randolph JJ, Falbe K (2014). A step-by-step guide to propensity score matching in R. *Practical Assessment, Research & Evaluation*, 19.
- [32] Diedenhofen B, Musch J (2015). cocor: a comprehensive solution for the statistical comparison of correlations. *PLoS One*, 10:e0121945.
- [33] Sarazin M, Berr C, De Rotrou J, Fabrigoule C, Pasquier F, Legrain S, et al. (2007). Amnesic syndrome of the medial temporal type identifies prodromal AD: a longitudinal study. *Neurology*, 69:1859-1867.
- [34] Rabin LA, Wang C, Katz MJ, Derby CA, Buschke H, Lipton RB (2012). Predicting Alzheimer's disease: neuropsychological tests, self-reports, and informant reports of cognitive difficulties. *J Am Geriatr Soc*, 60:1128-1134.
- [35] Kilpatrick C, Murrie V, Cook M, Andrewes D, Desmond P, Hopper J (1997). Degree of left hippocampal atrophy correlates with severity of neuropsychological deficits. *Seizure*, 6:213-218.
- [36] Ystad MA, Lundervold AJ, Wehling E, Espeseth T, Rootwelt H, Westlye LT, et al. (2009). Hippocampal volumes are important predictors for memory function in elderly women. *BMC Med Imaging*, 9:17.
- [37] Eldridge LL, Knowlton BJ, Furmanski CS, Bookheimer SY, Engel SA (2000). Remembering episodes: a selective role for the hippocampus during retrieval. *Nat Neurosci*, 3:1149-1152.
- [38] Kantarci K, Weigand SD, Przybelski SA, Preboske GM, Pankratz VS, Vemuri P, et al. (2013). MRI and MRS predictors of mild cognitive impairment in a population-based sample. *Neurology*, 81:126-133.
- [39] Landau S, Harvey D, Madison C, Reiman E, Foster N, Aisen P, et al. (2010). Comparing predictors of conversion and decline in mild cognitive impairment. *Neurology*, 75:230-238.
- [40] Grober E, Buschke H, Crystal H, Bang S, Dresner R (1988). Screening for dementia by memory testing. *Neurology*, 38:900-903.
- [41] Tounsi H, Deweer B, Ergis AM, Van der Linden M,

- Pillon B, Michon A, et al. (1999). Sensitivity to semantic cuing: an index of episodic memory dysfunction in early Alzheimer disease. *Alzheimer Dis Assoc Disord*, 13:38-46.
- [42] Dubois B, Albert ML (2004). Amnestic MCI or prodromal Alzheimer's disease? *Lancet Neurol*, 3:246-248.
- [43] Siedlecki KL, Manly JJ, Brickman AM, Schupf N, Tang MX, Stern Y (2010). Do neuropsychological tests have the same meaning in Spanish speakers as they do in English speakers? *Neuropsychology*, 24:402-411.