

A Study Linking Axial Length, Corneal Curvature, and Eye Axis With Demographic Characteristics in the Emmetropic Eyes of Bangladeshi People

Review began 09/27/2022

Review ended 10/03/2022

Published 10/04/2022

© Copyright 2022

Benzir et al. This is an open access article distributed under the terms of the Creative Commons Attribution License CC-BY 4.0., which permits unrestricted use, distribution, and reproduction in any medium, provided the original author and source are credited.

Maskura Benzir¹, Akhtari Afroze², Afroj Zahan³, Rawshon Ara Naznin¹, Afsana Khanam¹, Sharmin A. Sumi⁴, Md. Ahsanul Haq⁵, Halyna Lugova⁶, Mainul Haque⁷

1. Anatomy, Thengamara Mohila Sabuj Sangha (TMSS) Medical College, Bogra, BGD 2. Anatomy, Rajshahi Medical College, Rajshahi, BGD 3. Anatomy, Gazi Medical College, Khulna, BGD 4. Anatomy, Bangabandhu Sheikh Mujib Medical University (BSMMU), Dhaka, BGD 5. Statistics, Infectious Diseases Division, International Centre for Diarrhoeal Disease Research, Bangladesh (icddr,b), Dhaka, BGD 6. Humanitarian Assistance and Disaster Relief Research Centre and Community Medicine, Faculty of Medicine and Defence Health, Universiti Pertahanan Nasional Malaysia (National Defence University of Malaysia), Kuala Lumpur, MYS 7. Pharmacology and Therapeutics, Universiti Pertahanan Nasional Malaysia (National Defence University of Malaysia), Kuala Lumpur, MYS

Corresponding author: Mainul Haque, runurono@gmail.com

Abstract

Background

Axial length (AL) and corneal curvature (CC) are one of the furthest critical parameters for optometry and oculoplastic surgery. These two variables are crucial in biometry for accurately measuring the power of the intraocular lens in cataract surgery. This research aimed to determine the association linking axial length and corneal curvature with demographic characteristics in emmetropic eyes of Bangladeshi people.

Methods

This descriptive cross-sectional research was carried out among 200 emmetropic eyes of Bangladeshi people attending the Department of Ophthalmology at Rajshahi Medical College, Bangladesh, with different eye conditions, between July 2017 and June 2018. Data was gathered by conducting person-to-person interviews, checking visual activity using the Snellen chart, and measuring corneal curvature using an auto-keratometer and axial eyeball length using A-scan ultrasonography.

Results

A total of 200 attendances were studied, 90 males and 110 females. All were emmetropic. The age range was 21-52 years, and the highest contributors were in the 21-30-year age group. The association between right axial length and right corneal curvature shows a negative relation among both sexes. It was -0.61 (β -coefficient (β -coff)), and highly significant in females at -0.89 (β -coff). Additionally, the association between left axial length and left corneal curvature shows a negative relation of -0.65 (β -coff), which was again highly significant in females at -0.87 (β -coff). Both were not significant in males. There was no significant association linking axial length and eye axis in both sexes. The multivariate regression model was used to assess the p-value, and the regression model was adjusted by age.

Conclusion

Optical parametric measurement is a noninvasive diagnostic and assessment tool that might help in the actual measurement of intraocular lens implantation in cataract surgery and may also provide supplementary information to the researcher domain.

Categories: Ophthalmology, Public Health, Anatomy

Keywords: optical parametric measurement, gender comparison, eye axis, bangladesh, descriptive cross-sectional analytical study, association, emmetropic eye, keratometry, corneal curvature, axial length

Introduction

Anatomy

The eye is the most important sense organ and organ of vision in humans. This is the peripheral organ of vision. The eyeball is situated in the orbit of the skull. Eyeballs are a cystic structure and almost spherical in shape [1]. The anterior and posterior diameter (axial length (AL)) is usually about 22-24 mm in the emmetropic eye [2]. The parallel rays of light from any image that enters the eye are focused on the retina by the refractive properties of the cornea and lens [3]. So, to achieve emmetropia, the axial length (AL) and corneal curvature (CC) have a definite relation. Emmetropic eyes' visual acuity is 6/6 because the patient's sitting or standing position is 6 m from the Snellen or E chart [4]. Usually, the axial length is the length from

How to cite this article

Benzir M, Afroze A, Zahan A, et al. (October 04, 2022) A Study Linking Axial Length, Corneal Curvature, and Eye Axis With Demographic Characteristics in the Emmetropic Eyes of Bangladeshi People. Cureus 14(10): e29925. DOI 10.7759/cureus.29925

the corneal surface to an intervention peak in tune with the retinal pigment epithelium or Bruch's membrane [5-7].

On the other hand, the cornea is the outer covering of the eyeball, which is transparent and avascular and protects the eye against different infections [8]. About 70% of refraction of the eye is contributed by the cornea, contributing about 40-44 D of refractive power [7]. Various refractive errors arise if these two variables are not appropriately coordinated. In other studies, refractive flaws are the second highest cause of blindness [8]. In Bangladesh, the prevalence of refractive error (RE) was 4.7% [9]. Around 1-2 billion people suffer from refractive error globally [10].

Embryology

Usually, most eye development occurs in the first 18 months with the progressive flattening of the cornea [11]. The cornea is developed from three sources: corneal epithelium derived from surface ectoderm, neural crest cell, and mesenchyme originating from mesoderm [12]. In normal eyes, they exceeded the progressive corneal flattening resulting from overall axial length changes. The normal physiology of axial length elongation starts during 3-6 months of life, progressively decreasing over the next two years [13] and completing the development within the first few years of life [14]. It has been reported that throughout the first year of ocular growth in humans, the cornea and lens lose power while axial length grows [15,16]. The corneal power remains the same after age 3 [17], with about 32 genetic markers related to corneal curvature and axial length development [18]. Usually, emmetropia arises between three and nine months of age [19]. Genetic influences and lifestyle are also responsible for the differences in corneal curvature measurement [20-24].

Clinical implication of emmetropic process

The human eye is planned to attain emmetropia in teens and preserve emmetropia with aging [25]. Many major eye diseases are related to corneal curvatures, such as keratoconus, myopia, and corneal astigmatism [26]. The quality of cataract surgery has advanced much in the last few decades [27]. Visual acuity after cataract surgery improved tremendously [28,29]. Additionally, patient side exception has been raised a lot in correcting refractive error after surgical intervention of cataract [30-32]. The importance of eyeball biometry is an absolute need for intraocular lens power calculations [30,33]. The axial length is related to myopic refractive error distressing, affecting a wide range of age groups [34,35]. The World Health Organization (WHO) reported that refractive defects of the eye are the primary starting point of visual disability and blindness globally [10,36,37].

Furthermore, over two-fifths of visual disablement are ascribed to refractive flaws [38]. Additionally, hyperopia and myopia increase the risk of all frequently occurring glaucoma [1,39]. Farsightedness (hyperopia) is a recurrent visual disorder wherein a patient can see far-off things distinctly, nonetheless close-by items, perhaps fuzzy. Myopia (near-sightedness/short-sightedness) is a kind of refractive defect. Myopic patients' light focuses ahead of, in lieu of, the retina. It has been reported that myopia positively correlates with an upper pervasiveness of every single category of open-angle glaucoma and ocular hypertension. However, hyperopia was substantially related to a higher prevalence of primary angle-closure glaucoma [39-42]. In Bangladesh, the population aged 40-49 years had a higher significance of hyperopia than the relatively young people of 30-39 years [43].

This study intended to find the association between axial length and corneal curvature in the emmetropic eye of people in northern Bangladesh.

Materials And Methods

Study design

This was a cross-sectional research study.

Study population

The study populations were emmetropic patients at the Department of Ophthalmology, Rajshahi Medical College, Rajshahi, Bangladesh.

Study period

Data were collected between July 2017 and June 2018.

Sampling methods and sample size

A universal sampling method was adopted, and the sample size was 200.

Data collection techniques

A survey questionnaire was prepared to collect data. Non-probability sampling was used to select the sample population.

Ethical consideration

This study obtained Institutional Review Board (IRB) approval from Rajshahi Medical College, Rajshahi, Bangladesh (reference number: RMC/ERC/2017-2019/75) on December 3, 2017. Additionally, all research participants were adequately briefed about scientific publications. Consequently, written informed consent was obtained before any intervention was conducted.

Statistical analysis plan

The demographic characteristics of the study participants were calculated based on age and sex. Univariate or bivariate regression models were used to assess the association between outcomes (corneal curvature and eye axis) and predictor variables (axial length). The Student's t-test was used to see the mean difference between male and female axial length and corneal curvature. A multivariate regression model was used to estimate the association between outcomes and predictor variables, and the model was adjusted by age. A p-value of <0.05 was considered significant. All data were analyzed using the Statistical Package for the Social Sciences (SPSS) for Windows version 20 (IBM SPSS Statistics, Armonk, NY, USA) and Stata/IC version 15 (StataCorp LLC, College Station, TX, USA).

Results

The sociodemographic details of the study participants are depicted in Table 1. Among 200 study participants, 90 (45%) and 110 (55%) were male and female, respectively. Additionally, the age distribution of this study's participants was described in Table 2. The right ($p=0.037$) and left ($p=0.050$) axial lengths of male participants were statistically significantly higher than those of female participants. Left corneal curvature was statistically significant ($p=0.030$) in females than in males (Table 3 and Figure 1).

	Number of cases	Number of eyes	% of cases	Age
Male	90	180	45	29.0±6.51
Female	110	220	55	29.6±6.27
Total	200	400	100	29.3±6.37

TABLE 1: Distribution of the total number of participants and the total number of eyes according to sex.

Age distribution	Overall	Male	Female	p-value
Age (mean±SD)	29.3±6.37	29.0±6.51	29.6±6.27	0.551
21-30	117 (58.5%)	55 (47%)	62 (53%)	0.467
31-40	75 (37.5%)	31 (41.3%)	44 (58.7%)	0.089
>41	8 (4%)	4 (50%)	4 (50%)	0.999

TABLE 2: Age distribution of the study participants (N=200).

Groups were created for every 10 years of age stratification.

SD: standard deviation

Parameters	Overall (N=200)	Male (n=90)	Female (n=110)	p-value
Rt AL (mm)	23.1±0.75	23.3±0.72	23.0±0.76	0.037
Lt AL (mm)	23.1±0.74	23.2±0.72	22.9±0.74	0.050
Rt CC (D)	44.0±1.24	43.8±1.10	44.1±1.34	0.168
Lt CC (D)	44.0±1.27	43.8±1.13	44.2±1.36	0.030

TABLE 3: Rt AL, Lt AL, Rt CC, and Lt CC stratified by sex.

Rt AL: right eye axial length; Lt AL: left eye axial length; Rt CC: right eye corneal curvature; Lt CC: left eye corneal curvature; mm: millimeter; D: diopter

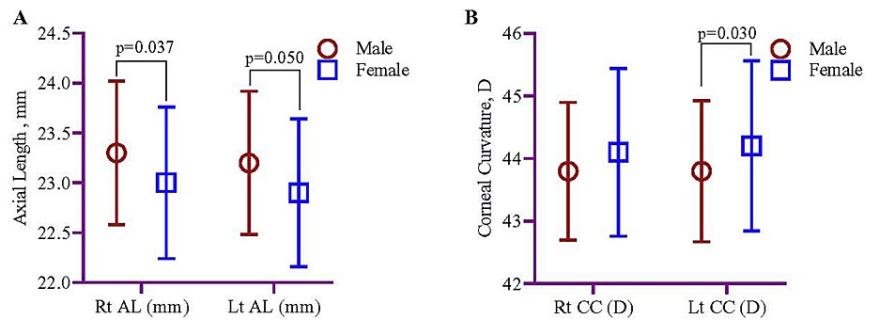


FIGURE 1: Distribution of Rt AL, Lt AL, Rt CC, and Lt CC stratified by sex.

Data were presented as mean with SD, and the mean difference between males and females was estimated using the Student's sample t-test.

Rt AL: right eye axial length; Lt AL: left eye axial length; Rt CC: right eye corneal curvature; Lt CC: left eye corneal curvature; mm: millimeter; D: diopter; SD: standard deviation

Rt AL at 23 mm decreased 0.61 mm of Rt CC compared to Rt AL at 21-22 mm (reference) (β -coefficient (β -coff)=-0.61; 95% confidence interval (95% CI)=-1.08, -0.13; $p=0.013$); the decline also remains significant for female participants (β -coff=-0.89; 95% CI=-1.52, -0.27; $p=0.006$), but not for male. The estimated Rt CC declined more when Rt AL was at 24-25 mm (β -coff=-1.32; 95% CI=-1.84, -0.80; $p<0.001$) compared to at 21-22 mm. In females, the decline was 1.43 mm when Rt AL was 24-25 mm, but no significant association was noted in male participants (Table 4 and Figure 2A).

	Overall (N=200)		Male (n=90)		Female (n=110)	
	β -coff (95% CI)	p-value	β -coff (95% CI)	p-value	β -coff (95% CI)	p-value
21-22 mm	Reference		Reference		Reference	
23 mm	-0.61 (-1.08, -0.13)	0.013	0.11 (-0.67, 0.89)	0.779	-0.89 (-1.52, -0.27)	0.006
24-25 mm	-1.32 (-1.84, -0.80)	<0.001	-0.79 (-1.62, 0.03)	0.058	-1.43 (-2.14, -0.72)	<0.001

TABLE 4: Association of right axial length with right corneal curvature stratified by sex.

A multivariate regression model was utilized to evaluate the p-value, and the regression model was adjusted by age.

mm: millimeter; β -coff: β -coefficient; 95% CI: 95% confidence interval

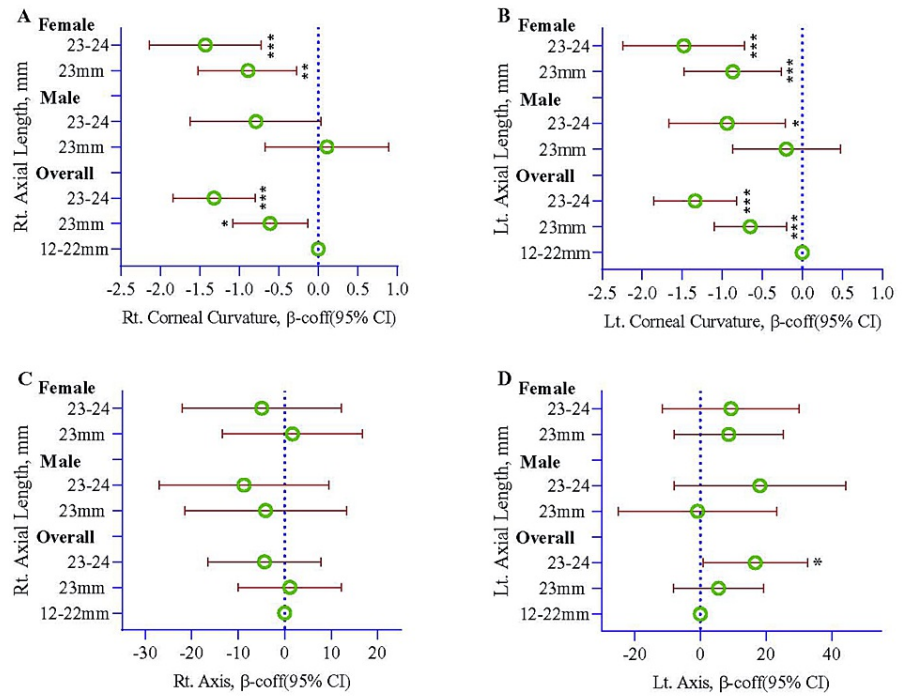


FIGURE 2: Association of right axial length with right corneal curvature (A), left axial length with left corneal curvature (B), right axial length with right axis (C), and left axial length with left axis (D) estimated using a multivariate regression model, and the model was stratified by sex. The regression model was adjusted by the age of the participants.

mm: millimeter; D: diopter; Rt: right; Lt: left; β -coeff: β -coefficient; 95% CI: 95% confidence interval

A significant reduction was noted in Lt CC (β -coeff=-0.65; 95% CI=-1.10, -0.20; $p=0.005$) when Lt AL was 23 mm, while comparing with Lt AL at 21-22 mm, the decline also remains significant for female participants (β -coeff=-0.87; 95% CI=-1.48, -0.26; $p=0.006$), but not for male. The estimated Rt CC declined more when Rt AL was at 24-25 mm (β -coeff=-1.34; 95% CI=-1.86, -0.82; $p<0.001$) compared to at 21-22 mm. The significant decline remains the same for males and females ($p=0.012$ and $p<0.001$, respectively) (Table 5 and Figure 2B).

	Overall (N=200)		Male (n=90)		Female (n=110)	
Left axial length	β -coeff (95% CI)	p-value	β -coeff (95% CI)	p-value	β -coeff (95% CI)	p-value
21-22 mm	Reference		Reference		Reference	
23 mm	-0.65 (-1.10, -0.20)	0.005	-0.20 (-0.87, 0.48)	0.561	-0.87 (-1.48, -0.26)	0.005
24-25 mm	-1.34 (-1.86, -0.82)	<0.001	-0.94 (-1.67, -0.21)	0.012	-1.48 (-2.24, -0.72)	<0.001

TABLE 5: Association of left axial length with left corneal curvature stratified by sex.

A multivariate regression model was utilized to evaluate the p-value, and the regression model was adjusted by age.

mm: millimeter; β -coeff: β -coefficient; 95% CI: 95% confidence interval

No significant association was found between Rt AL and the right axis (Table 6 and Figure 2C). Lt AL at 24-25 mm significantly increased the left axis (β -coeff=16.7; 95% CI=0.81, 32.7; $p=0.040$) compared to axial length at 21-22 mm. No other significant association was noted (Table 7 and Figure 2D).

	Overall (N=200)		Male (n=90)		Female (n=110)	
	β -coff (95% CI)	p-value	β -coff (95% CI)	p-value	β -coff (95% CI)	p-value
Right axial length						
21-22 mm	Reference		Reference		Reference	
23 mm	1.11 (-9.97, 12.2)	0.844	-4.10 (-21.5, 13.3)	0.641	1.69 (-13.4, 16.8)	0.825
24-25 mm	-4.35 (-16.5, 7.76)	0.480	-8.74 (-27.0, 9.54)	0.344	-4.92 (-22.0, 12.2)	0.569

TABLE 6: Association of right axial length with right axis stratified by sex.

A multivariate regression model was utilized to evaluate the p-value, and the regression model was adjusted by age.

mm: millimeter; β -coff: β -coefficient; 95% CI: 95% confidence interval

	Overall (N=200)		Male (n=90)		Female (n=110)	
	β -coff (95% CI)	p-value	β -coff (95% CI)	p-value	β -coff (95% CI)	p-value
Left axial length						
21-22 mm	Reference		Reference		Reference	
23 mm	5.51 (-8.26, 19.3)	0.431	-0.86 (-25.0, 23.2)	0.944	8.65 (-8.00, 25.3)	0.304
24-25 mm	16.7 (0.81, 32.7)	0.040	18.1 (-8.02, 44.2)	0.172	9.22 (-11.6, 30.0)	0.381

TABLE 7: Association of left axial length with left axis stratified by sex.

A multivariate regression model was utilized to evaluate the p-value, and the regression model was adjusted by age.

mm: millimeter; β -coff: β -coefficient; 95% CI: 95% confidence interval

There was a positive relationship noted between Lt AL and Rt AL (β -coff=0.91; 95% CI=0.84, 0.98; $p<0.001$). The association remained the same when stratified by male and female (Figure 3A, 3B). No significant association was found while comparing Lt CC and Rt CC, but a significantly negative association (β -coff=-1.59; 95% CI=-2.72, -0.46; $p=0.007$) was found in male participants while the association was checked separately in male and female (Figure 3C, 3D).

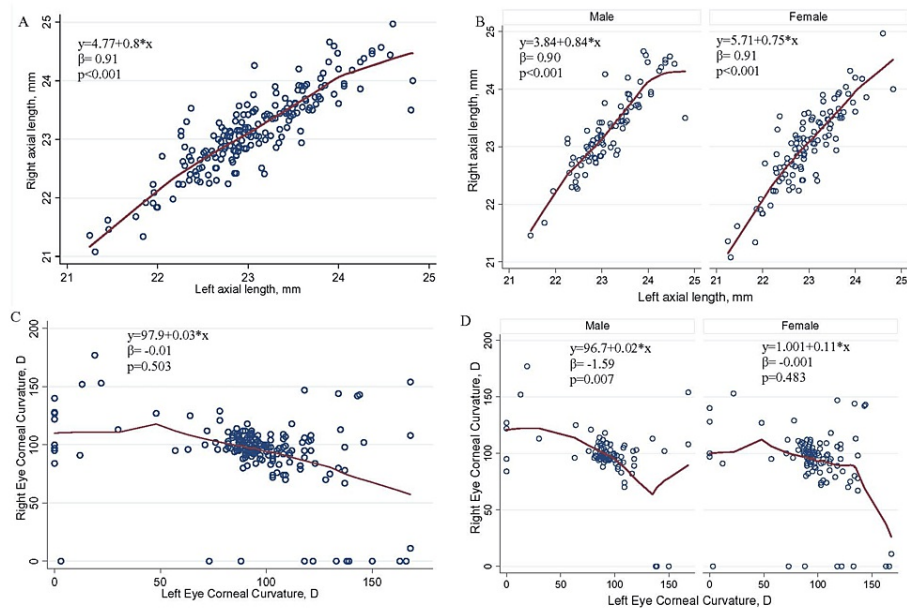


FIGURE 3: Association between Lt AL and Rt AL (A and B) and between Lt CC and Rt CC (C and D).

A simple linear regression was used to see if there was a positive relationship noted between Lt AL and Rt AL and between Lt CC and Rt CC, and when stratified by male and female.

Notes: $Y=a+bX$, where Y is the right axial length (dependent variable), a and b are unknown constants that determine the position of the line, and X is the independent variable (left axial length). β represents regression coefficient, which is the difference in the predicted (independent variable) value of the response variable (outcomes) for each one-unit change in the predictor variable, assuming all other predictor variables are held constant.

Rt AL: right eye axial length; Lt AL: left eye axial length; Rt CC: right eye corneal curvature; Lt CC: left eye corneal curvature; mm: millimeter; D: diopter

Discussion

The computation of the AL of the eyeball and corneal curvature are well-established diagnostic aids for different clinical conditions in ophthalmology, especially in refractive error [44,45]. Globally, refractive error is the second highest cause of loss of sight and low vision [46]. Ocular biometry is the quantification of the anatomical length and breadth of the eye, which encompass corneal curvature (keratometry), axial length, and anterior chamber depth. Thereby, it is one of the most influential procedures in assessing refractive errors [13-15]. The refractive components usually are the axial length and the corneal curvature, which are interdependent [14-16]. The present study was based on optical parametric measurement and included 200 adult individuals from the northern part of Bangladesh with 6/6 visual acuity without any aid. The age range in this study was 21-52 years. Most of the participants were in the age range of 21-30 years, and only 4% were in the age group of fourth and fifth decade. This study aims to see the connection between axial length and corneal curvature, and demographic characteristics in adult emmetropic Bangladeshi people.

This study showed that the AL of both eyes was statistically significantly different between the sexes. Overall, males had AL higher than females. It has been reported that the AL of the eyeball globally is considered to be 24 mm among adults, notwithstanding sex, race, and additional anatomical mensuration [47]. Thereby, Bangladeshi people's AL was lower than the international standard. Nevertheless, one prospective Taiwanese study revealed that there was a prolongation of AL by 10 years. The mean AL was initially 23.65 ± 1.80 mm, and after 10 years, it was increased to 24.30 ± 1.90 with a statistically significant difference ($p=0.003$) [48]. The initial value of the Taiwanese study was similar to the current study's findings. As our study was cross-sectional, we cannot assess AL change after 10 years in the same subjects. Nonetheless, age-related prolongation of AL has been evident in other studies [49,50].

Astigmatism is a frequently found ocular disease, but this visual defect is a correctable refractive error [51]. It is due to the incompatibility between corneal or lens curvature error, leading to blurred distance and near vision [52,53]. Females of the current study participants had higher CC than their male counterparts. However, there were statistically significant differences observed only in Lt CC. Multiple studies reported

that females' CC are steeper or higher than males' [54,55]. The current study findings were in the same line as the earlier studies.

This study found that when the AL of the eyeball increases, the CC decreases. Additionally, it has been observed that increasing AL was more statistically significantly inversely associated with decreasing CC of both the right and left eyes. Our findings were similar to studies conducted in Nigeria [5], the USA [56], and China [57]. The Nigerian study revealed that there was a statistically significant inverse correlation between AL and CC ($r=-0.53$; $p<0.0001$) [5]. Axial length, corneal curvature, and anterior chamber depth are strongly responsible for refractive error [56]. Furthermore, genetic influences also exist for anomalous measurements of the eye [56]. In multivariate analysis, AL was significantly associated with a higher corneal curvature radius ($p<0.001$) and negatively associated with the lens vault ($p<0.001$), which is equally accountable for developing refractive error [57]. Multiple studies have reported that reducing or flattening corneal curvature promotes progressive hyperopia and corneal astigmatism [58-60]. Furthermore, no statistically significant association was found between Rt AL and the right axis; nonetheless, a significant association was observed between Lt AL and the left axis. There was a statistically significant positive association found between Lt AL and Rt AL. This association remained the same when stratified between sexes. However, no significant association was found when comparing Lt CC and Rt CC. Still, a significant negative association was found in male participants while the association was observed when checked separately between the sexes.

Limitations of this research

This study sample size was small, only 200. If it was more extensive, the results would be more accurate. The sample was not equal in each group of age. Time and finances were considered constraints and significant obstacles to conducting this research more widely.

Conclusions

It was revealed from the results of this study that there were two critical features of the eyeball, i.e., corneal curvature and axial length, which are the most important issues to maintain 6/6 visual acuity in the emmetropic eye. There is a relationship between them, which might be utilized in various applications in medical science, including ophthalmology, especially in measuring the power of the intraocular lens in cataract surgery and other ocular surgery. This significant relation also helps in the recruitment of various jobs such as military services, navy services, aviation or pilot, driver, railways, and traffic police, in which accurate vision of the individual is vital. The study's findings might provide supplementary information to other researchers in this domain.

A further large-scale study is recommended as the present study was conducted in a limited territory. Observing axial length and corneal curvature using an improved instrument such as an optical biometer is also recommended to obtain a more accurate value.

Additional Information

Disclosures

Human subjects: Consent was obtained or waived by all participants in this study. The Institutional Review Board (IRB) of Rajshahi Medical College, Bangladesh, issued approval RMC/ERC/2017-2019/75 on December 3, 2017. All research participants were adequately briefed about scientific publications. Consequently, written informed consent was obtained before any intervention was conducted. **Animal subjects:** All authors have confirmed that this study did not involve animal subjects or tissue. **Conflicts of interest:** In compliance with the ICMJE uniform disclosure form, all authors declare the following: **Payment/services info:** All authors have declared that no financial support was received from any organization for the submitted work. **Financial relationships:** All authors have declared that they have no financial relationships at present or within the previous three years with any organizations that might have an interest in the submitted work. **Other relationships:** All authors have declared that there are no other relationships or activities that could appear to have influenced the submitted work.

References

1. Rehman I, Hazhirkarzar B, Patel BC: Anatomy, head and neck, eye. StatPearls Publishing, Treasure Island, FL; 2022.
2. Paritekar P, Nayak A, Umesh Y, Sirivella I, Manoharan S, Khatib Z: Comparison of newer Kane formula with Sanders Retzlaff Kraff/Theoretical and Barrett Universal II for calculation of intraocular lens power in Indian eyes. *Indian J Ophthalmol.* 2022, 70:1203-7. [10.4103/ijo.IJO_2014_21](https://doi.org/10.4103/ijo.IJO_2014_21)
3. Chen MJ, Liu YT, Tsai CC, Chen YC, Chou CK, Lee SM: Relationship between central corneal thickness, refractive error, corneal curvature, anterior chamber depth and axial length. *J Chin Med Assoc.* 2009, 72:133-7. [10.1016/S1726-4901\(09\)70038-3](https://doi.org/10.1016/S1726-4901(09)70038-3)
4. Marsden J, Stevens S, Ebri A: How to measure distance visual acuity. *Community Eye Health.* 2014, 27:16.
5. Iyamu E, Iyamu J, Obiakor CI: The role of axial length-corneal radius of curvature ratio in refractive state categorization in a Nigerian population. *ISRN Ophthalmol.* 2011, 2011:138941. [10.5402/2011/138941](https://doi.org/10.5402/2011/138941)
6. Bhardwaj V, Rajeshbhai GP: Axial length, anterior chamber depth-a study in different age groups and refractive errors. *J Clin Diagn Res.* 2013, 7:2211-2. [10.7860/JCDR/2013/7015.3473](https://doi.org/10.7860/JCDR/2013/7015.3473)

7. Schmid GF, Papastergiou GI, Nickla DL, Riva CE, Lin T, Stone RA, Laties AM: Validation of laser Doppler interferometric measurements in vivo of axial eye length and thickness of fundus layers in chicks. *Curr Eye Res.* 1996, 15:691-6. [10.3109/02713689609008911](https://doi.org/10.3109/02713689609008911)
8. DelMonte DW, Kim T: Anatomy and physiology of the cornea. *J Cataract Refract Surg.* 2011, 37:588-98. [10.1016/j.jcrs.2010.12.037](https://doi.org/10.1016/j.jcrs.2010.12.037)
9. Fares U, Otri AM, Al-Aqaba MA, Dua HS: Correlation of central and peripheral corneal thickness in healthy corneas. *Cont Lens Anterior Eye.* 2012, 35:39-45. [10.1016/j.clae.2011.07.004](https://doi.org/10.1016/j.clae.2011.07.004)
10. Mohammed Dhaiban TS, Ummer FP, Khudadad H, Veettil ST: Types and presentation of refractive error among individuals aged 0-30 years: hospital-based cross-sectional study, Yemen. *Adv Med.* 2021, 2021:5557761. [10.1155/2021/5557761](https://doi.org/10.1155/2021/5557761)
11. Muhit M, Minto H, Parvin A, Jadoon MZ, Islam J, Yasmin S, Khandaker G: Prevalence of refractive error, presbyopia, and unmet need of spectacle coverage in a northern district of Bangladesh: Rapid Assessment of Refractive Error study. *Ophthalmic Epidemiol.* 2018, 25:126-32. [10.1080/09286586.2017.1370119](https://doi.org/10.1080/09286586.2017.1370119)
12. Eghrari AO, Riazuddin SA, Gottsch JD: Overview of the cornea: structure, function, and development. *Prog Mol Biol Transl Sci.* 2015, 134:7-23. [10.1016/bs.pmbts.2015.04.001](https://doi.org/10.1016/bs.pmbts.2015.04.001)
13. Gordon RA, Donzis PB: Refractive development of the human eye. *Arch Ophthalmol.* 1985, 103:785-9. [10.1001/archophth.1985.01050060045020](https://doi.org/10.1001/archophth.1985.01050060045020)
14. Semeraro F, Forbice E, Nascimbeni G, et al.: Ocular refraction at birth and its development during the first year of life in a large cohort of babies in a single center in northern Italy. *Front Pediatr.* 2019, 7:539. [10.3389/fped.2019.00539](https://doi.org/10.3389/fped.2019.00539)
15. Flitcroft DI, Knight-Nanan D, Bowell R, Lanigan B, O'Keefe M: Intraocular lenses in children: changes in axial length, corneal curvature, and refraction. *Br J Ophthalmol.* 1999, 83:265-9. [10.1136/bjo.83.3.265](https://doi.org/10.1136/bjo.83.3.265)
16. Grosvenor T, Scott R: Role of the axial length/corneal radius ratio in determining the refractive state of the eye. *Optom Vis Sci.* 1994, 71:573-9. [10.1097/00006324-199409000-00005](https://doi.org/10.1097/00006324-199409000-00005)
17. Vitályos G, Kolozsvári BL, Németh G, Losonczy G, Hassan Z, Pásztor D, Fodor M: Effects of aging on corneal parameters measured with Pentacam in healthy subjects. *Sci Rep.* 2019, 9:3419. [10.1038/s41598-019-39254-x](https://doi.org/10.1038/s41598-019-39254-x)
18. Plotnikov D, Cui J, Clark R, et al.: Genetic variants associated with human eye size are distinct from those conferring susceptibility to myopia. *Invest Ophthalmol Vis Sci.* 2021, 62:24. [10.1167/iovs.62.13.24](https://doi.org/10.1167/iovs.62.13.24)
19. Mutti DO, Mitchell GL, Jones LA, et al.: Axial growth and changes in lenticular and corneal power during emmetropization in infants. *Invest Ophthalmol Vis Sci.* 2005, 46:3074-80. [10.1167/iovs.04-1040](https://doi.org/10.1167/iovs.04-1040)
20. Fan Q, Pozarickij A, Tan NY, et al.: Genome-wide association meta-analysis of corneal curvature identifies novel loci and shared genetic influences across axial length and refractive error. *Commun Biol.* 2020, 3:133. [10.1038/s42003-020-0802-y](https://doi.org/10.1038/s42003-020-0802-y)
21. Han S, Chen P, Fan Q, et al.: Association of variants in FRAP1 and PDGFRA with corneal curvature in Asian populations from Singapore. *Hum Mol Genet.* 2011, 20:3693-8. [10.1093/hmg/ddr269](https://doi.org/10.1093/hmg/ddr269)
22. Fotedar R, Wang JJ, Burlutsky G, Morgan IG, Rose K, Wong TY, Mitchell P: Distribution of axial length and ocular biometry measured using partial coherence laser interferometry (IOL Master) in an older white population. *Ophthalmology.* 2010, 117:417-23. [10.1016/j.ophtha.2009.07.028](https://doi.org/10.1016/j.ophtha.2009.07.028)
23. Lee KE, Klein BE, Klein R, Quandt Z, Wong TY: Association of age, stature, and education with ocular dimensions in an older white population. *Arch Ophthalmol.* 2009, 127:88-93. [10.1001/archophthalmol.2008.521](https://doi.org/10.1001/archophthalmol.2008.521)
24. Lim LS, Saw SM, Jeganathan VS, et al.: Distribution and determinants of ocular biometric parameters in an Asian population: the Singapore Malay eye study. *Invest Ophthalmol Vis Sci.* 2010, 51:103-9. [10.1167/iovs.09-3553](https://doi.org/10.1167/iovs.09-3553)
25. Hagen LA, Gilson SJ, Akram MN, Baraas RC: Emmetropia is maintained despite continued eye growth from 16 to 18 years of age. *Invest Ophthalmol Vis Sci.* 2019, 60:4178-86. [10.1167/iovs.19-27289](https://doi.org/10.1167/iovs.19-27289)
26. Li SM, Iribarren R, Kang MT, et al.: Corneal power, anterior segment length and lens power in 14-year-old Chinese children: the Anyang Childhood Eye Study. *Sci Rep.* 2016, 6:20243. [10.1038/srep20243](https://doi.org/10.1038/srep20243)
27. Spalton D, Koch D: The constant evolution of cataract surgery. *BMJ.* 2000, 321:1304. [10.1136/bmj.321.7272.1304](https://doi.org/10.1136/bmj.321.7272.1304)
28. Huynh N, Nicholson BP, Agrón E, Clemons TE, Bressler SB, Rosenfeld PJ, Chew EY: Visual acuity after cataract surgery in patients with age-related macular degeneration: age-related eye disease study 2 report number 5. *Ophthalmology.* 2014, 121:1229-36. [10.1016/j.ophtha.2013.12.035](https://doi.org/10.1016/j.ophtha.2013.12.035)
29. Forooghian F, Agrón E, Clemons TE, Ferris FL 3rd, Chew EY: Visual acuity outcomes after cataract surgery in patients with age-related macular degeneration: age-related eye disease study report no. 27. *Ophthalmology.* 2009, 116:2093-100. [10.1016/j.ophtha.2009.04.033](https://doi.org/10.1016/j.ophtha.2009.04.033)
30. Hiraoka T, Asano H, Ogami T, Nakano S, Okamoto Y, Yamada Y, Oshika T: Influence of dry eye disease on the measurement repeatability of corneal curvature radius and axial length in patients with cataract. *J Clin Med.* 2022, 11:10.3390/jcm11030710
31. Antwi-Adjei EK, Owusu E, Kobia-Acquah E, Dadzie EE, Anarfi E, Wanye S: Evaluation of postoperative refractive error correction after cataract surgery. *PLoS One.* 2021, 16:e0252787. [10.1371/journal.pone.0252787](https://doi.org/10.1371/journal.pone.0252787)
32. Abdelghany AA, Alio JL: Surgical options for correction of refractive error following cataract surgery. *Eye Vis (Lond).* 2014, 1:2. [10.1186/s40662-014-0002-2](https://doi.org/10.1186/s40662-014-0002-2)
33. Jeong J, Song H, Lee JK, Chuck RS, Kwon JW: The effect of ocular biometric factors on the accuracy of various IOL power calculation formulas. *BMC Ophthalmol.* 2017, 17:62. [10.1186/s12886-017-0454-y](https://doi.org/10.1186/s12886-017-0454-y)
34. Mutti DO, Hayes JR, Mitchell GL, et al.: Refractive error, axial length, and relative peripheral refractive error before and after the onset of myopia. *Invest Ophthalmol Vis Sci.* 2007, 48:2510-9. [10.1167/iovs.06-0562](https://doi.org/10.1167/iovs.06-0562)
35. Meng W, Butterworth J, Malecaze F, Calvas P: Axial length of myopia: a review of current research. *Ophthalmologica.* 2011, 225:127-34. [10.1159/000317072](https://doi.org/10.1159/000317072)
36. World Health Organization: Blindness and vision impairment. (2021). Accessed: September 5, 2022: <https://www.who.int/news-room/fact-sheets/detail/blindness-and-visual-impairment>.
37. Kedir J, Girma A: Prevalence of refractive error and visual impairment among rural school-age children of

- Goro District, Gurage Zone, Ethiopia. *Ethiop J Health Sci.* 2014, 24:353-8. [10.4314/ejhs.v24i4.11](https://doi.org/10.4314/ejhs.v24i4.11)
38. Pascolini D, Mariotti SP: Global estimates of visual impairment: 2010. *Br J Ophthalmol.* 2012, 96:614-8. [10.1136/bjophthalmol-2011-300539](https://doi.org/10.1136/bjophthalmol-2011-300539)
 39. Chen SJ, Lu P, Zhang WF, Lu JH: High myopia as a risk factor in primary open angle glaucoma. *Int J Ophthalmol.* 2012, 5:750-3. [10.3980/j.issn.2222-3959.2012.06.18](https://doi.org/10.3980/j.issn.2222-3959.2012.06.18)
 40. Shen L, Melles RB, Metlapally R, et al.: The association of refractive error with glaucoma in a multiethnic population. *Ophthalmology.* 2016, 123:92-101. [10.1016/j.ophtha.2015.07.002](https://doi.org/10.1016/j.ophtha.2015.07.002)
 41. Tham YC, Aung T, Fan Q, Saw SM, Siantar RG, Wong TY, Cheng CY: Joint effects of intraocular pressure and myopia on risk of primary open-angle glaucoma: the Singapore Epidemiology of Eye Diseases Study. *Sci Rep.* 2016, 6:19320. [10.1038/srep19320](https://doi.org/10.1038/srep19320)
 42. Mohamed-Noor J, Abd-Salam D: Refractive errors and biometry of primary angle-closure disease in a mixed Malaysian population. *Int J Ophthalmol.* 2017, 10:1246-50. [10.18240/ijo.2017.08.10](https://doi.org/10.18240/ijo.2017.08.10)
 43. Bourne RR, Dineen BP, Ali SM, Noorul Huq DM, Johnson GJ: Prevalence of refractive error in Bangladeshi adults: results of the National Blindness and Low Vision Survey of Bangladesh. *Ophthalmology.* 2004, 111:1150-60. [10.1016/j.ophtha.2003.09.046](https://doi.org/10.1016/j.ophtha.2003.09.046)
 44. He J, Xu X, Zhu J, et al.: Lens power, axial length-to-corneal radius ratio, and association with diabetic retinopathy in the adult population with type 2 diabetes. *Ophthalmology.* 2017, 124:326-35. [10.1016/j.ophtha.2016.10.041](https://doi.org/10.1016/j.ophtha.2016.10.041)
 45. Alhussain SH, Mallen EA, Strang NC, Jonuscheit S: The role of peripheral ocular length and peripheral corneal radius of curvature in determining refractive error. *J Optom.* 2022, 15:129-37. [10.1016/j.optom.2021.02.001](https://doi.org/10.1016/j.optom.2021.02.001)
 46. Naidoo KS, Leasher J, Bourne RR, et al.: Global vision impairment and blindness due to uncorrected refractive error, 1990-2010. *Optom Vis Sci.* 2016, 93:227-34. [10.1097/OPX.0000000000000796](https://doi.org/10.1097/OPX.0000000000000796)
 47. Roy A, Kar M, Mandal D, Ray RS, Kar C: Variation of axial ocular dimensions with age, sex, height, BMI-and their relation to refractive status. *J Clin Diagn Res.* 2015, 9:AC01-4. [10.7860/JCDR/2015/10555.5445](https://doi.org/10.7860/JCDR/2015/10555.5445)
 48. Hsiao YT, Fang PC, Wu PC, Kuo MT, Chen YH, Kuo HK: Axial length of cataract eyes: a comparison of two cohorts over a span of 10 years apart. *BMC Ophthalmol.* 2021, 21:111. [10.1186/s12886-021-01859-w](https://doi.org/10.1186/s12886-021-01859-w)
 49. Rozema JJ, Ni Dhuhghaill S: Age-related axial length changes in adults: a review. *Ophthalmic Physiol Opt.* 2020, 40:710-7. [10.1111/opo.12728](https://doi.org/10.1111/opo.12728)
 50. Shoji T, Kato N, Ishikawa S, Ibuki H, Yamada N, Kimura I, Shinoda K: Association between axial length and in vivo human crystalline lens biometry during accommodation: a swept-source optical coherence tomography study. *Jpn J Ophthalmol.* 2020, 64:95-101. [10.1007/s10384-019-00700-8](https://doi.org/10.1007/s10384-019-00700-8)
 51. Irving EL, Machan CM, Lam S, Hrynychak PK, Lillakas L: Refractive error magnitude and variability: relation to age. *J Optom.* 2019, 12:55-63. [10.1016/j.optom.2018.02.002](https://doi.org/10.1016/j.optom.2018.02.002)
 52. Hu H, Yang M, Du B, Fang M, Liu X, Wang J: Evaluation of corneal curvature and astigmatism in patients with persistent pupillary membrane by partial coherence interferometry measurements. *Ophthalmic Res.* 2020, 63:314-9. [10.1159/000505072](https://doi.org/10.1159/000505072)
 53. Popa AV, Kee CS, Stell WK: Retinal control of lens-induced astigmatism in chicks. *Exp Eye Res.* 2020, 194:108000. [10.1016/j.exer.2020.108000](https://doi.org/10.1016/j.exer.2020.108000)
 54. De Bernardo M, Zeppa L, Zeppa L, Cornetta P, Vitiello L, Rosa N: Biometric parameters and corneal astigmatism: differences between male and female eyes. *Clin Ophthalmol.* 2020, 14:571-80. [10.2147/OPHTH.S219912](https://doi.org/10.2147/OPHTH.S219912)
 55. Kim H, An Y, Joo CK: Gender-differences in age-related changes of corneal astigmatism in Korean cataract patients. *BMC Ophthalmol.* 2019, 19:31. [10.1186/s12886-018-1001-1](https://doi.org/10.1186/s12886-018-1001-1)
 56. Klein AP, Suktitipat B, Duggal P, Lee KE, Klein R, Bailey-Wilson JE, Klein BE: Heritability analysis of spherical equivalent, axial length, corneal curvature, and anterior chamber depth in the Beaver Dam Eye Study. *Arch Ophthalmol.* 2009, 127:649-55. [10.1001/archophthalmol.2009.61](https://doi.org/10.1001/archophthalmol.2009.61)
 57. Yin G, Wang YX, Zheng ZY, Yang H, Xu L, Jonas JB: Ocular axial length and its associations in Chinese: the Beijing Eye Study. *PLoS One.* 2012, 7:e43172. [10.1371/journal.pone.0043172](https://doi.org/10.1371/journal.pone.0043172)
 58. Hirai H, Maruoka S, Yoshikawa T, Ogata N: Case of progressive hyperopia due to flattening of cornea. *Am J Ophthalmol Case Rep.* 2018, 10:169-71. [10.1016/j.ajoc.2018.02.013](https://doi.org/10.1016/j.ajoc.2018.02.013)
 59. Park Y, Kim HS: Torsional and flattening effect on corneal astigmatism after cataract surgery: a retrospective analysis. *BMC Ophthalmol.* 2017, 17:10. [10.1186/s12886-017-0399-1](https://doi.org/10.1186/s12886-017-0399-1)
 60. Hayashi K, Yoshida M, Hirata A, Yoshimura K: Changes in shape and astigmatism of total, anterior, and posterior cornea after long versus short clear corneal incision cataract surgery. *J Cataract Refract Surg.* 2018, 44:39-49. [10.1016/j.jcrs.2017.10.037](https://doi.org/10.1016/j.jcrs.2017.10.037)