



Since January 2020 Elsevier has created a COVID-19 resource centre with free information in English and Mandarin on the novel coronavirus COVID-19. The COVID-19 resource centre is hosted on Elsevier Connect, the company's public news and information website.

Elsevier hereby grants permission to make all its COVID-19-related research that is available on the COVID-19 resource centre - including this research content - immediately available in PubMed Central and other publicly funded repositories, such as the WHO COVID database with rights for unrestricted research re-use and analyses in any form or by any means with acknowledgement of the original source. These permissions are granted for free by Elsevier for as long as the COVID-19 resource centre remains active.

VRR 00490

Comparative features of a coronavirus isolated from a cheetah with feline infectious peritonitis

James F. Evermann¹, Jonathan L. Heeney²,
Alison J. McKeirnan¹ and Stephen J. O'Brien²

¹ Department of Veterinary Clinical Medicine and Surgery, College of Veterinary Medicine, Washington State University, Pullman, Washington, U.S.A. and ² Laboratory of Viral Carcinogenesis, National Cancer Institute, Frederick Cancer Research Facility, Frederick, Maryland, U.S.A.

(Accepted 13 January 1989)

Summary

A coronavirus which was isolated from a cheetah (*Acinonyx jubatus*) that succumbed to feline infectious peritonitis was characterized in vitro. The virus was determined to be highly cell-associated with Crandell feline kidney (CrFK) cells and was routinely maintained as a persistent infection (CrFK 83-4497). The cheetah coronavirus was compared with other members of the feline coronavirus group including the feline enteric coronavirus (FECV) 79-1683 and the feline infectious peritonitis viruses (FIPV), 79-1146, and UCD-1. The cheetah coronavirus was demonstrated to have a restricted host-cell range with limited cytopathic effect. Indirect immunofluorescence with antisera to FIPV UCD-1 revealed the concentration of viral antigens in the perinuclear region of cells infected with the cheetah coronavirus. Ultrastructural studies of the cheetah coronavirus indicated a limited number of immature viral particles within cytoplasmic vesicles and at the cell surface. This was in contrast to electron microscopy results of FECV 79-1683 and FIPV 79-1146, which had numerous mature virus particles within the cytoplasmic vesicles, as well as at the cell surface. The cheetah coronavirus was tentatively placed in the feline coronavirus family based upon its antigenic reactivity by immunofluorescence; however, the possibility that it represents a unique coronavirus of cheetahs should not be dismissed without further analyses at the host and genomic levels.

Cheetah coronavirus; Feline infectious peritonitis virus; Feline enteric coronavirus

Correspondence to: J.F. Evermann, Department of Veterinary Clinical Medicine and Surgery, College of Veterinary Medicine, Washington State University, Pullman, WA 99163-7010, U.S.A.

Introduction

Coronaviral infections of cats have been of considerable interest due to the severity of disease manifestations and the lack of prophylactic measures for containment of infection and disease (Barlough and Stoddart, 1989; Horzinek and Osterhaus, 1979a; Pedersen, 1987). The feline coronaviruses are comprised of two major pathogenic groups known as feline infectious peritonitis virus (FIPV) and feline enteric coronavirus (FECV) (Pedersen et al., 1984). The FIPV strains cause an immune-mediated vasculitis which has a high mortality once clinical signs are observed (Pedersen, 1987; Weiss and Scott, 1981). The FECV strains, although closely related to FIPV strains antigenically, cause a mild to asymptomatic infection of the gastrointestinal tract (Fiscus et al., 1987; McKeirnan et al., 1981; Pedersen et al., 1981b, 1984; Tupper et al., 1987). Although the feline coronaviruses have been primarily studied in their natural host (Pedersen, 1987), reports of FIP-like disease conditions have been reported in other members of the Felidae, including the large exotic cats, lion, tiger, and most recently, the cheetah (Briggs et al., 1986; Evermann et al., 1984, 1986; Horzinek and Osterhaus, 1979b; Pfeifer et al., 1983; Quesenberry, 1984; Worley, 1987). The outcome of FIPV infection in the cheetah has taken on an apparently more virulent aspect as higher percentages of the cheetah population have succumbed to disease than is currently recognized in the domestic cat population (Evermann et al., 1986). The apparent increased susceptibility of the cheetah to disease may be due in part to the introduction of an FIPV strain into an immunologically naive population, or to an abnormality in the cheetah's immune response or a combination of both factors (Evermann et al., 1986; Heeney et al., 1989; Marker and O'Brien, 1989; O'Brien et al., 1985). In an effort to determine if the strain of coronavirus which was isolated from a cheetah that died of FIP (Evermann et al., 1984) was unique from other currently available strains of feline coronavirus, comparative studies were conducted to characterize the cheetah coronavirus *in vitro*.

Materials and Methods

Cells and medium

Four cell lines derived from domestic cats and two cell lines derived from cheetahs were used to determine the cell susceptibility to the cheetah coronavirus, WSU 83-4497 (Table 1). Cells were maintained by weekly passage in Dulbecco's minimal essential medium (DMEM) supplemented with 10% fetal bovine serum and 100 IU/ml penicillin, 100 μ g/ml streptomycin, and 25 μ g/ml of fungizone. A persistent virus-infected cell line of Crandell feline kidney (CrFK) cells was used as the source of the cheetah coronavirus 83-4497 (Evermann et al., 1984). The persistently infected cells (CrFK 83-4497) were maintained as described above except were passaged every 3-4 weeks. Serum-free medium containing 5 μ g/ml trypsin was

TABLE 1

Degree of cell permissiveness for different strains of feline coronavirus

Cells			Degree of cell permissiveness ^a				
Type	Source	Passage level	Virus strain	FIPV			
			FECV	79-1683	UCD-4 ^b	UCD-1 ^b	79-1146
CrFK	ATCC ^c	112-118	3+	1+	1+	4+	1+
Fcwf-4	N. Pedersen ^d	22- 28	4+	2+	2+	4+	1+
FC-009	N. Pedersen	208-213	4+	3+	3+	4+	neg
FEA	L. Arther ^e	9- 12	4+	1+	1+	4+	neg
AjuKid 234	S. O'Brien ^f	3- 7	3+	1+	3+	4+	1+
AjuFib 238	S. O'Brien	4- 8	2+	neg	neg	2+	neg

^a Based upon cytopathic effects, indirect immunofluorescence, and released virus.^b Cell permissiveness of virus strain determined in the presence of trypsin (5 µg/ml) in serum-free media.^c American Type Culture Collection, Rockville, MD 20852.^d University of California, Davis, CA 95616.^e Cancer Research Facility, Frederick, MD 21701.^f Laboratory of Viral Carcinogenesis, NIH, Frederick, MD 21701.

used to enhance the cytopathic effect (CPE) and virus titers of UCD-1, UCD-4, and 83-4497 (Hoffmann and Wyler, 1988; Toth, 1982).

Viruses

Four strains of feline coronavirus were used to compare with the cheetah coronavirus, WSU 83-4497 (Evermann et al., 1984, 1986). These included FIPV strains, WSU 79-1146, UCD-1, and UCD-4, and FECV strain, WSU 79-1683 (McKeirnan et al., 1981; Pedersen et al., 1981a; Pedersen and Floyd, 1985). Viruses were added to cells at the time cells were transferred (simultaneous inoculation). The more rapidly cytopathic strains, FIPV 79-1146 and FECV 79-1683, were added to cells at an MOI of approximately 0.01 and the slower cytopathic FIPV strains, UCD-1 and UCD-4, at an MOI of approximately 1.0. The cheetah coronavirus, 83-4497, was primarily cell-associated and maintained as a persistently infected culture in CrFK cells (CrFK 83-4497).

Immunofluorescence

Antisera prepared in specific-pathogen-free cats hyperimmunized against either FECV 79-1683 or UCD-1 (kindly provided by Dr. N. Pedersen) were used in the indirect immunofluorescence assay (Evermann et al., 1984). Goat anti-cat IgG fluorescein-labeled conjugate (Kirkegaard-Perry Laboratories, Gaithersburg, MD) was used at a dilution of 1 : 20 in Dulbecco's phosphate buffered saline (D-PBS) free of calcium and magnesium. Selected fields were observed and photographed using a Zeiss IIRS fluorescent microscope with a mercury light and Kodak Tri-X pan 400

ASA film. Cheetah sera were obtained as part of a serologic survey for determining the prevalence of feline coronavirus infection in captive and wild-caught cheetahs (Heeney et al., 1989). Feline coronavirus antibody titers were determined by the indirect immunofluorescence test (Evermann et al., 1984), which has been shown to correlate closely with competitive enzyme-linked immunosorbent assays (Fiscus et al., 1985).

Electron microscopy

Cells infected with feline coronavirus strains were trypsinized at selected time intervals, washed twice in D-PBS and fixed in 1.25% glutaraldehyde solution (Chasey and Alexander, 1976). The glutaraldehyde-fixed cell pellet was rinsed with several changes of 0.1 M cacodylate buffer (pH 7.2) followed by post-fixation in 1% osmium in 0.1 M cacodylate buffer for 1 h. The osmium-fixed pellet was rinsed in a 4.5% sucrose solution and stained with a 1% aqueous solution of uranyl acetate containing 4.5% of sucrose for 30 min to enhance the contrast of the cells. Dehydration was carried out in a graded series of ethanol with three changes of absolute ethanol. The ethanol was replaced with propylene oxide and the cells were then infiltrated with equal volumes of propylene oxide and epoxy resin (LX-112) overnight. The cells were embedded in pure LX-112 resin in Beem capsules and allowed to cure for 48 h at 60°C prior to cutting thin sections. The sections were double-stained with 2% uranyl acetate followed by lead citrate and then stabilized with carbon in a vacuum evaporator. The sections were observed and photographed with a Hitachi H-7000 electron microscope operated at 75 kV.

Results

Cell susceptibility

Six different cell types were studied to determine the permissiveness for coronavirus replication. The results are summarized in Table 1. The most permissive cell types were those derived from domestic cat and included CrFK, Fcwf-4, FC-009, and FEA cells. The two cell lines derived from cheetahs, AjuKid and AjuFib, were less permissive for CPE and virus infectivity than those cells derived from domestic cats. There was a gradient of CPE noted in cells with the FIPV strain 79-1146, the most virulent, followed by FECV 79-1683, FIPV UCD-1, and FIPV UCD-4, respectively. The cheetah agent was highly cell-associated and required prolonged incubation (up to 14 days post-infection) before the monolayers showed CPE. The cheetah agent also expressed the most limited host range in that virus was not detected in two of the domestic cat cell lines, FC-009 and FEA cells, and one of the cheetah-derived cell lines (AjuFib). Based on these observations, electron microscopy and immunofluorescence were conducted on virus-infected CrFK cells. Routine propagation of the cheetah coronavirus was accomplished by maintenance

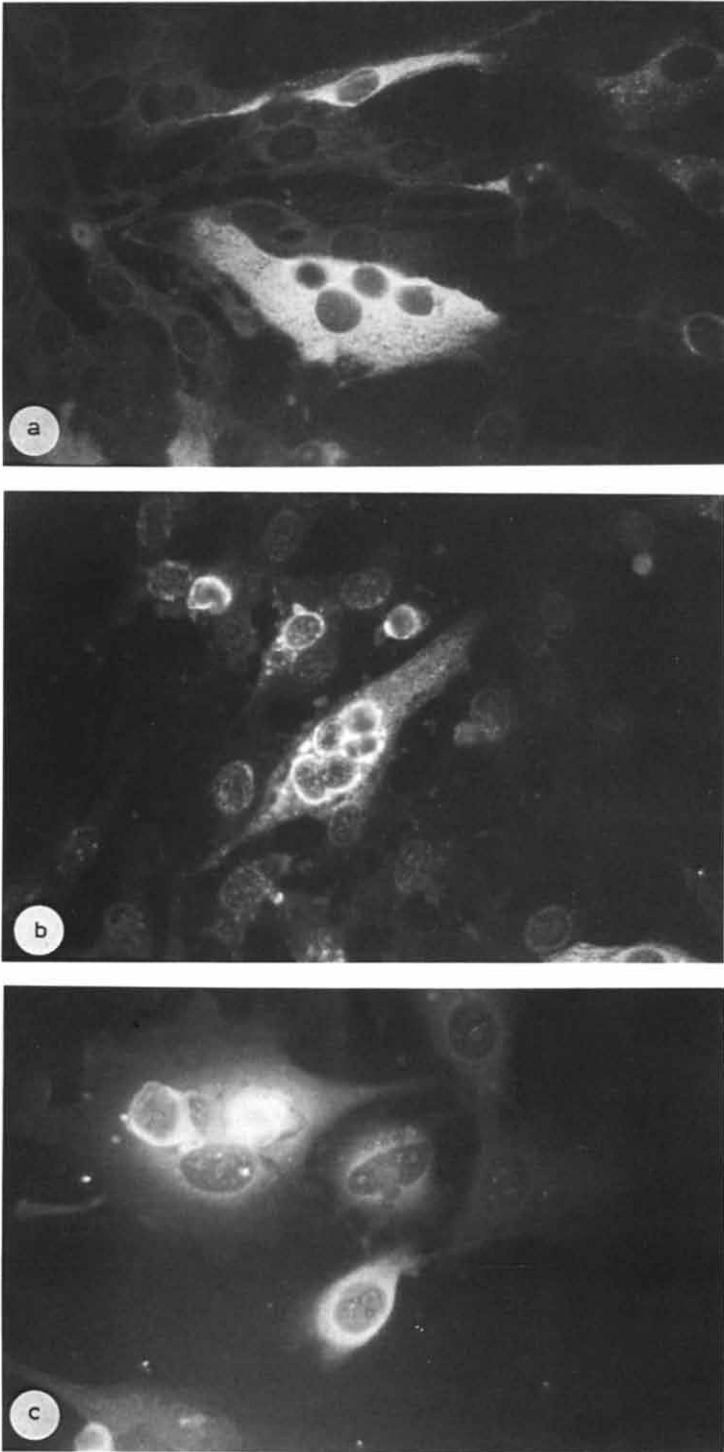


Fig. 1. (a) Indirect immunofluorescence of FECV 79-1683 in CrFK cells, 20 h p.i. Stained with cat antibody to FECV 79-1683. Note cells at various stages of viral antigen expression, single cell to multinucleated cell, $\times 33$. (b) Indirect immunofluorescence of FECV 79-1683 in CrFK cells, 20 h p.i. Stained with cheetah serum seropositive to the feline coronavirus group. Note perinuclear fluorescence, $\times 40$. (c) Indirect immunofluorescence of CrFK cells persistently infected with cheetah coronavirus 83-4497, passage 22. Stained with cat antibody to FIPV UCD-1. Note perinuclear fluorescence. $\times 33$.

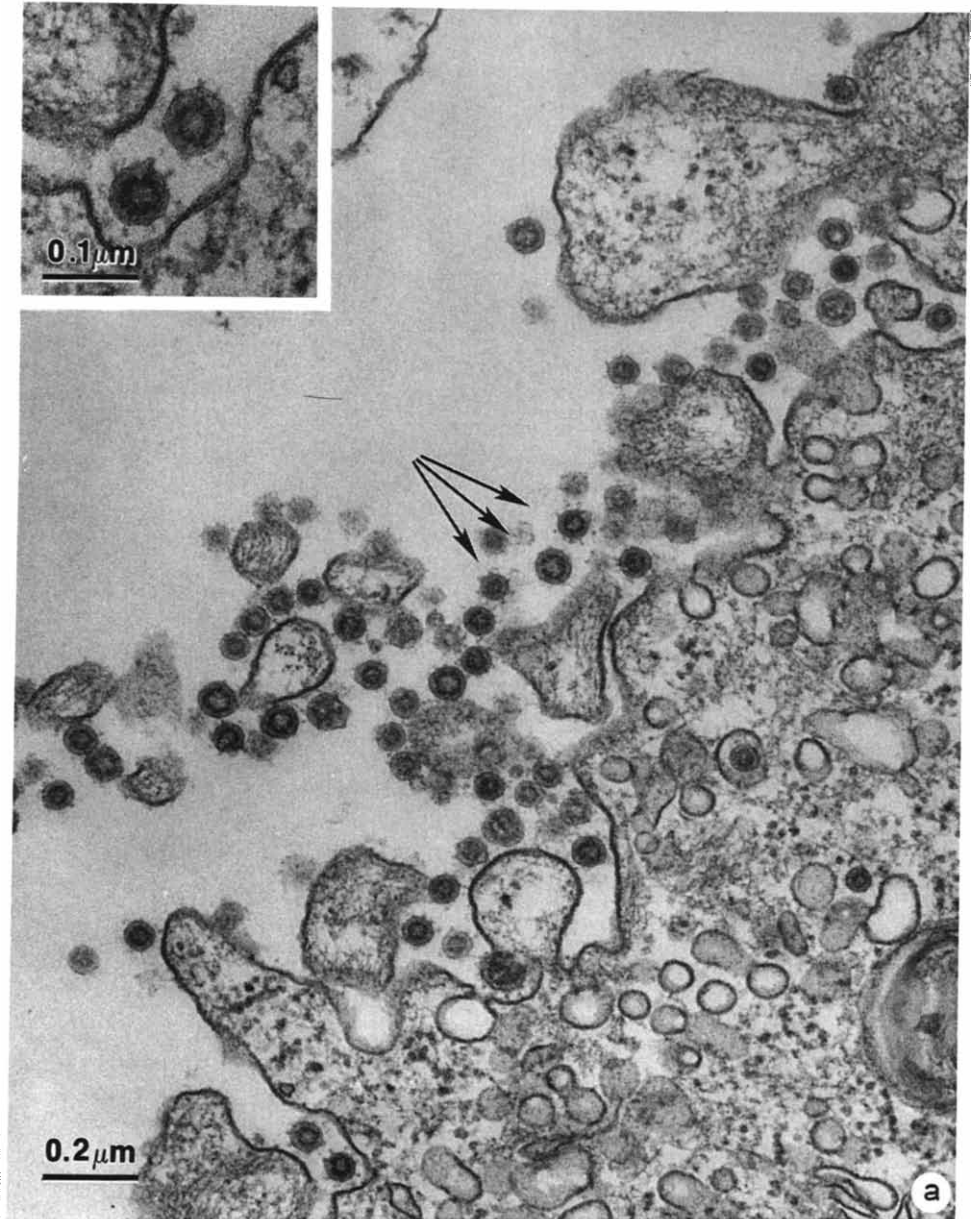


Fig. 2. (a) Electron microscopy of FECV 79-1683 in CrFK cells, 48 h p.i. Note the maturation of virus particles in the cytoplasmic vesicles and the accumulation of mature virions at the cell surface (arrows). Inset: higher magnification of coronavirus particles with peplomers. (b) Electron microscopy of FIPV 79-1146 in CrFK cells, 48 h p.i. Note the maturation and accumulation of immature virions (without peplomers) and mature virions (with peplomers) in the cytoplasmic vesicles (inset). (c) Electron microscopy of CrFK cells persistently infected with cheetah coronavirus 83-4497, passage 22. Note sparse number of virus particles within the cytoplasmic vesicles as well as the few virus particles at the cell surface. The virus particles appear to be crenated and lacking peplomers (inset).

of the persistently infected cell line, CrFK 83-4447, and harvesting supernatant fluids for attempted isolation of cell-free virus and for Western blotting (to be reported elsewhere, Heeney et al., 1989).

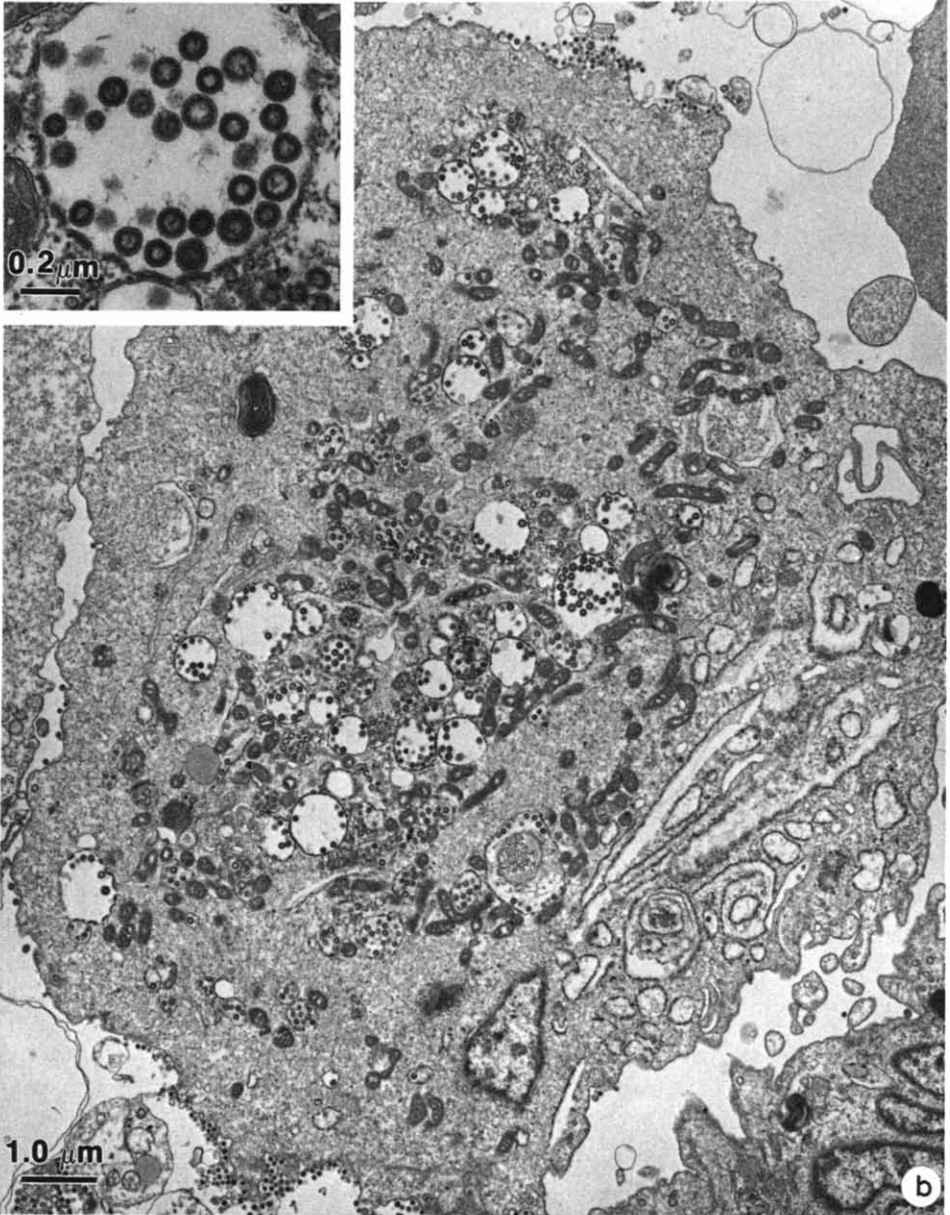


Fig. 2. (continued).

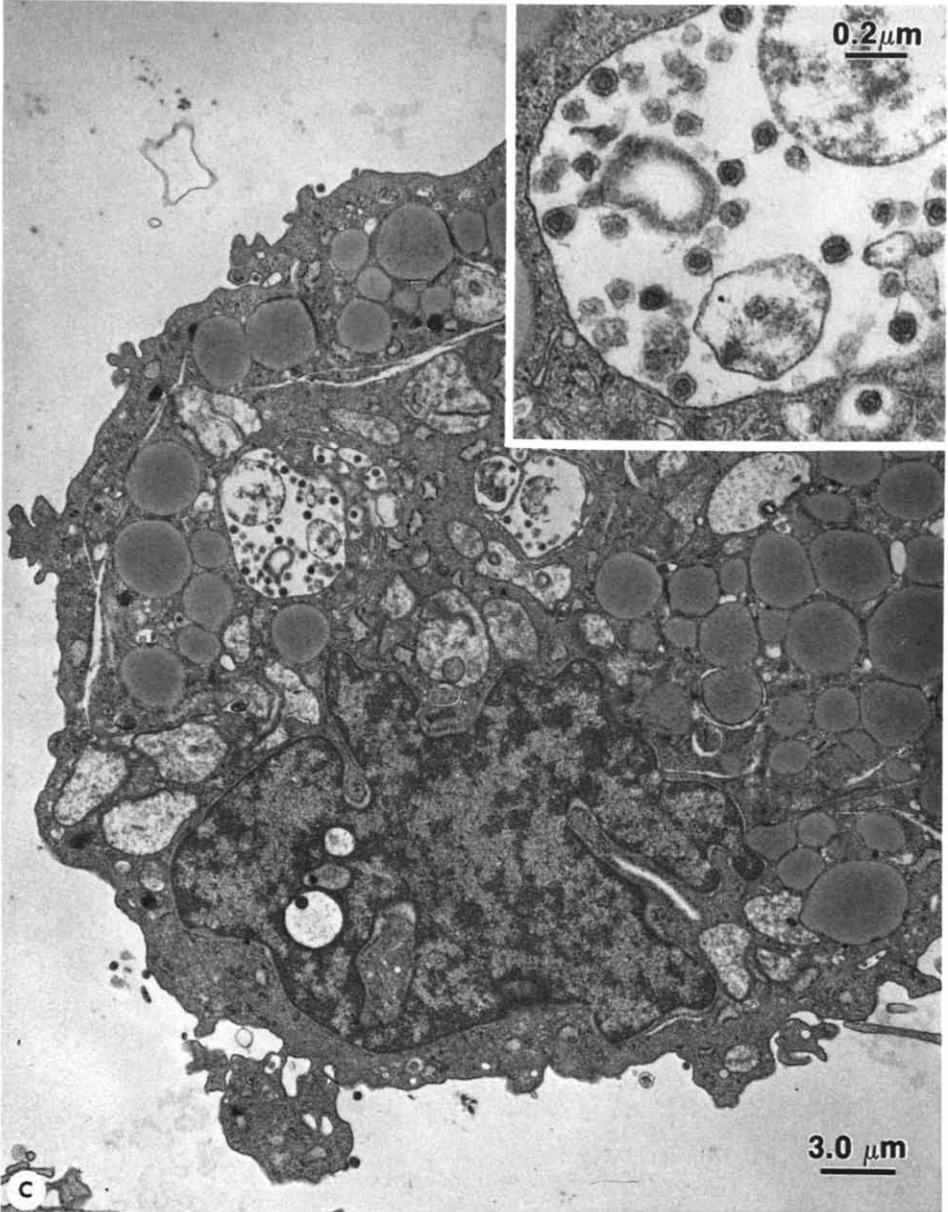


Fig. 2. (continued).

Immunofluorescence

Three types of fluorescence were observed in the study. The first consisted of a diffuse, homogeneous pattern when antiserum was tested with the corresponding

virus strain (homologous reaction). Fig. 1a illustrates this type of pattern with FECV 79-1683 and cat anti-79-1683 antisera. The second type of fluorescence was noted when cheetah sera with known indirect immunofluorescence assay antibody (1 : 3200) to feline coronavirus were tested against heterologous coronavirus. The fluorescent pattern was markedly perinuclear (Fig. 1b). The third type of fluorescence was observed in the cells persistently infected with the cheetah coronavirus, CrFK 83-4497. The pattern was homogeneous yet concentrated around the nucleus in single cells (Fig. 1c). This type of fluorescence was characteristic of cheetah sera and cat antisera to one particular strain of FIPV, UCD-1.

Electron microscopy

Ultrastructural analysis of the lytic FECV 79-1683 and FIPV 79-1146 revealed the maturation of numerous virus particles budding from membranes of the smooth endoplasmic reticulum into cisternae within the cytoplasm (Fig. 2a, b). Additional virions were observed clustered at the cell surface. The morphology of the virus particles was spherical and particles with peplomers could be readily discerned at the cell surface and to a limited extent within the cytoplasmic vacuoles (Fig. 2a, b inserts). These observations were in contrast to those of the cheetah coronavirus in CrFK in which the virus was highly cell-associated. Abnormal viral structures were observed in cytoplasmic cisternae and to a limited extent at the cell surface (Fig. 2c). The virus structures appeared crenated, with irregular shaped envelopes and in the process of either being degraded or incompletely formed (Fig. 2c insert). There were no virus particles with peplomers observed within the cytoplasmic vacuoles or at the cell surface.

Discussion

The cheetah coronavirus was determined to be highly cell-associated with CrFK cells and exhibited a host range *in vitro* that was the most restrictive of the feline coronavirus studied to date. This limited growth potential (cytopathic effect) in cell culture could be augmented by the addition of trypsin to the growth medium in the absence of serum (Table 1). It has been well documented that host-cell proteases are essential in the replication of certain viruses, especially during the maturation phase of crucial glycoproteins (Holmes et al., 1987; Sturman et al., 1985; Wellink and VanKammen, 1988). Trypsin has been used to enhance the plaque-forming capability of bovine coronavirus and has been used to select potential phenotypic markers on strains of transmissible gastroenteritis and feline coronaviruses (Chen, 1985; Chen and Kahn, 1985; McKeirnan et al., 1987; Toth, 1982). Additional studies are required to determine if other factors, such as viral interference by replication-defective mutants, temperature-sensitive mutants, etc., may be controlling the persistent cheetah coronavirus infection in the CrFK cells (Whitaker-Dowling and Youngner, 1987). The *in vitro* properties of the cheetah coronavirus (highly cell-associated and reactive by indirect immunofluorescence with UCD-1 antisera) tentatively place it

between the non-cell adapted FECV strain, UCD, and the FIPV strain of low to moderate virulence in vitro and in vivo, UCD-1 (Pedersen et al., 1981a; Pedersen and Floyd, 1985). The cytopathic strains FECV 79-1683 and FIPV 79-1146 demonstrated the widest host range in vitro. Although both of the aforementioned viruses were highly lytic in cell culture, surviving cell populations were demonstrable in cheetah fibroblastic cells (AjuFib) with both strains and in CrFK cells and cheetah kidney (AjuKid) with FECV 79-1683. Characterization of these persistently infected cell cultures is currently underway.

Immunofluorescent studies revealed a propensity for cheetah sera with known serum antibodies to the feline coronaviruses to stain virus-infected cells in the perinuclear region, while serum from cats experimentally infected or naturally exposed (data not shown) to feline coronaviruses stained more homogeneously throughout the cytoplasm. Although the cheetah coronavirus was detected by immunofluorescence with domestic cat antisera prepared against different strains of feline coronavirus, the most intense staining was observed when cheetah coronavirus antigens were identified by antisera to FIPV UCD-1. The UCD-1 strain has been reported to be of moderate virulence in domestic cats (Pedersen et al., 1981a).

Ultrastructural analysis of the cheetah coronavirus indicated the presence of abnormal virus particles in the cytoplasmic vesicles of CrFK cells that were persistently infected. Although the virus particles appeared spherical, the envelopes were irregular and the viruses appeared to be either in various stages of degeneration or incomplete development. Rare cell-free virus particles were observed, which were devoid of any discernable peplomers. These results are consistent with prior data on the limited in vitro growth potential of the virus in a variety of cell types and the tendency for the immunofluorescence patterns to be confined primarily to the perinuclear region of the infected cells. The electron microscopy of the cytolytic coronaviruses, FECV 79-1683 and FIPV 79-1146 revealed similarities in terms of multiple immature and mature virus particles in the cytoplasmic cisternae and the accumulation of mature virions with peplomers in and at the vicinity of the cell surface (Chasey and Alexander, 1976; Beesley and Hitchcock, 1982).

As with other members of the coronavirus family, there are specific virus strains within the feline coronavirus group with a spectrum of disease potential (Barlough and Stoddart, 1989; Pedersen, 1987). This diversity of virus strains and in vivo virulence have been well studied with the murine coronavirus, mouse hepatitis virus (Holmes et al., 1987), and more recently with the avian coronavirus, infectious bronchitis virus (Kusters et al., 1987). The study reported herein adds another coronavirus to the family and may represent either another type of coronavirus affecting cats, or may represent a strain of coronavirus unique to the cheetah. Evidence in support of a cheetah coronavirus comes from serologic studies in which antibodies to the domestic coronavirus group (Horzinek et al., 1982) (feline coronaviruses, canine coronavirus, and transmissible gastroenteritis virus of swine) have been detected in wild-caught cheetahs by indirect immunofluorescence, virus neutralization, and Western blot analysis (Heeney et al., 1989; Horzinek and Osterhaus, 1979b). Additional studies are necessary to determine the pathogenicity of the virus in specific pathogen-free cats, as well as in organ cultures derived from

coronaviral-seronegative cheetahs. Molecular analysis of the cheetah coronavirus utilizing cDNA probes to various members of the coronavirus family would be important in terms of determining the degree of homology, as well as possibly defining the site(s) of restriction in the persistently infected CrFK cells (DeGroot et al., 1987; Jacobs et al., 1987; Kooi et al., 1988; Shockley et al., 1987).

Acknowledgments

The authors wish to acknowledge the technical support of Mary Eichelberger and the photomicrography and electron microscopy services of Program Resources, Inc., Frederick, MD, in particular Kunio Nagashima. Appreciation to Dr. Kay Holmes and Dr. Bill Modi for valuable discussions on coronavirus replication and protein staining patterns. This work was supported in part by National Institutes of Health Sabbatical Assignment, Intergovernmental Personnel Program, 1987-88 (J.F.E.).

References

- Barlough, J.E. and Stoddart, C.A. (1989) Feline coronaviral infections. In: C.E. Green (Ed.), *Infectious Disease of the Dog and Cat*, 2nd Edn. W.B. Saunders Co., Philadelphia, in press.
- Beesley, J.E. and Hitchcock, L.M. (1982) The ultrastructure of feline infectious peritonitis virus in feline embryonic lung cells. *J. Gen. Virol.* 59, 23-28.
- Briggs, M.B., Evermann, J.F. and McKeirnan, J. (1986) Feline infectious peritonitis. An update of a captive cheetah population. *Feline Pract.* 16, 13-16.
- Chasey, D. and Alexander, D.J. (1976) Morphogenesis of avian infectious bronchitis virus in primary chick kidney cells. *Arch. Virol.* 32, 101-111.
- Chen, K.-S. (1985) Enzymatic and acidic sensitivity profiles of selected virulent and attenuated transmissible gastroenteritis viruses of swine. *Am. J. Vet. Res.* 46, 632-636.
- Chen, K.-S. and Kahn, D.E. (1985) A double-protease-resistant variant of transmissible gastroenteritis virus and its ability to induce lactogenic immunity. *Am. J. Vet. Res.* 46, 1632-1636.
- DeGroot, F.J., Maduro, J., Lenstra, J.A., Horzinek, M.C., van der Zeijst, B.A.M. and Spaan, W.J.M. (1987) cDNA cloning and sequence analysis of the gene encoding the peplomer protein of feline infectious peritonitis virus. *J. Gen. Virol.* 68, 2639-2646.
- Evermann, J.F., Burns, G., Roelke, M.E., McKeirnan, A.J., Greenlee, A., Ward, A.C. and Pfeifer, M.L. (1984) Diagnostic features of an epizootic of feline infectious peritonitis in captive cheetahs. *Am. Assoc. Vet. Lab. Diag. Proc.* 26, 365-382.
- Evermann, J.F., Roelke, M.E. and Briggs, M.B. (1986) Clinical and diagnostic features of feline coronavirus infections of cheetahs. *Feline Pract.* 26(3), 21-30.
- Fiscus, S.A., Rivoire, B.L. and Teramoto, Y.A. (1987) Epitope-specific antibody responses to virulent and avirulent feline infectious peritonitis virus isolates. *J. Clin. Microbiol.* 25, 1529-1534.
- Fiscus, S.A., Teramoto, Y.A., Mildbrand, M.M., Knisley, C.V., Winston, S.E. and Pedersen, N.C. (1985) Competitive enzyme immunoassays for the rapid detection of antibodies to feline infectious peritonitis virus polypeptides. *J. Clin. Microbiol.* 22, 395-401.
- Heaney, J., Evermann, J.F., McKeirnan, A.J. and O'Brien, S.J. (1989) Prevalence of seropositive cheetahs to pathogenic variants of feline infectious peritonitis virus. *J. Gen. Virol.*, in preparation.
- Hoffmann, M. and Wyler, R. (1988) Propagation of the virus of porcine epidemic diarrhea in cell culture. *J. Clin. Microbiol.* 26, 2235-2239.
- Holmes, K.V., Boyle, J.F., Williams, R.K., Stephensen, C.B., Robbins, S.G., Bauer, E.C., Duchala, C.S., Frana, M.F., Weismiller, D.G., Compton, S., McGowan, J.J. and Sturman, L.S. (1987) Processing of

- coronavirus proteins and assembly of virions. In: M.A. Brinton and R.R. Rueckert (eds), *Positive Strand RNA Viruses*, pp. 339–349. Alan Liss, New York.
- Horzinek, M., Lutz, H. and Pedersen, N.C. (1982) Antigenic relationships among homologous structural polypeptides of porcine, feline and canine coronaviruses. *Infect. Immun.* 37, 1148–1155.
- Horzinek, M.C. and Osterhaus, A.D.M.E. (1979a) The virology and pathogenesis of feline infectious peritonitis. *Arch. Virol.* 59, 1–15.
- Horzinek, M.C. and Osterhaus, A.D.M.E. (1979b) Feline infectious peritonitis: a worldwide serosurvey. *Am. J. Vet. Res.* 40, 1487–1492.
- Jacobs, L., deGroot, R., Van der Zeijst, B.A.M., Horzinek, M.C. and Spaan, W. (1987) The nucleotide sequence of the peplomer gene of porcine transmissible gastroenteritis virus (TGEV): comparison with the sequence of the peplomer protein of feline infectious peritonitis virus (FIPV). *Virus Res.* 8, 363–371.
- Kooi, C., Mizzen, L., Alderson, C., Daya, M. and Anderson, R. (1988) Early events of importance in determining host cell permissiveness to mouse hepatitis virus infection. *J. Gen. Virol.* 69, 1125–1135.
- Kusters, J.G., Niesters, H.G.M., Bleumink-Pluym, N.M.C., Davelaar, F.G., Horzinek, M.C. and Van der Zeijst, B.A.M. (1987) Molecular epidemiology of infectious bronchitis virus in the Netherlands. *J. Gen. Virol.* 68, 343–352.
- Macnaughton, M.R. and Davies, H.A. (1987) Coronaviridae. In: M.V. Nermut and A.C. Steven (eds), *Animal Virus Structure*, pp. 173–183. Elsevier Science Publishers, New York.
- Marker, L. and O'Brien, S.J. (1989) Captive breeding of the cheetah (*Acinonyx jubatus*) in North American zoos (1871–1986). *Zoo Biol.*, in press.
- McKeirnan, A.J., Evermann, J.F., Hargis, A., Miller, L.M. and Ott, R.L. (1981) Isolation of feline coronaviruses from two cats with diverse disease manifestations. *Feline Pract.* 11, 16–20.
- McKeirnan, A.J., Evermann, J.F., Davis, E.V. and Ott, R.L. (1987) Comparative properties of feline coronaviruses in vitro. *Can. J. Vet. Res.* 51, 212–216.
- O'Brien, S.J., Roelke, M.E., Marker, L., Newman, A., Winkler, C.A., Meltzer, D., Colly, L., Evermann, J.F., Bush, M. and Wildt, D.E. (1985) Genetic basis for species vulnerability in the cheetah. *Science* 227, 1428–1434.
- Pedersen, N.C. (1987) Coronavirus diseases (coronavirus enteritis, feline infectious peritonitis). In: J. Holzworth (Ed.), *Diseases of the Cat*, pp. 193–214. W.B. Saunders, Philadelphia.
- Pedersen, N.C., Boyle, J.F. and Floyd, K. (1981a) Infection studies in kittens using feline infectious peritonitis virus propagated in cell culture. *Am. J. Vet. Res.* 42, 363–367.
- Pedersen, N.C., Boyle, J.F., Floyd, K., Fudge, A. and Barker, J. (1981b) An enteric coronavirus infection of cats and relationship to feline infectious peritonitis. *Am. J. Vet. Res.* 42, 368–377.
- Pedersen, N.C., Evermann, J.F., McKeirnan, A.J. and Ott, R.L. (1984) Pathogenicity studies of feline coronavirus isolates 79-1146 and 79-1683. *Am. J. Vet. Res.* 45, 2580–2585.
- Pedersen, N.C. and Floyd, K. (1985) Experimental studies with three new strains of feline infectious peritonitis virus: FIPV-UCD2, FIPV-UCD3 and FIPV-UCD4. *Compend. Cont. Educ. Pract. Vet.* 7, 1001–1011.
- Pfeifer, M.L., Evermann, J.F., Roelke, M.E., Gallina, A.M., Ott, R.L. and McKeirnan, A.J. (1983) Feline infectious peritonitis in a captive cheetah. *J. Am. Vet. Med. Assoc.* 183, 1317–1319.
- Quesenberry, K.E. (1984) Infectious disease of nondomestic cats. *Vet. Clin. N. Am. (Small Anim. Pract.)* 14, 1089–1106.
- Shockley, L.J., Kapke, P.A., Lapps, W., Brian, D.A., Potgieter, L.N.D. and Woods, R. (1987) Diagnosis of porcine and bovine enteric coronavirus infections using cloned cDNA probes. *J. Clin. Microbiol.* 25, 1591–1596.
- Sturman, L.S., Ricard, C.S. and Holmes, K.V. (1985) Proteolytic cleavage of the E2 glycoprotein of murine coronavirus: activation of cell-fusing activity of virions by trypsin and separation of two different 90K cleavage fragments. *J. Virol.* 56, 904–911.
- Toth, T.E. (1982) Trypsin-enhanced replication of neonatal calf diarrhea coronavirus in bovine embryonic lung cells. *Am. J. Vet. Res.* 43, 967–972.
- Tupper, G.T., Evermann, J.F., Russell, R.G. and Thouless, M.E. (1987) Antigenic and biological diversity of feline coronaviruses: feline infectious peritonitis and feline enteritis virus. *Arch. Virol.* 96, 29–38.

- Weiss, R.C. and Scott, F.W. (1981) Pathogenesis of feline infectious peritonitis: nature and development of viremia. *Am. J. Vet. Res.* 42, 382–390.
- Wellink, J. and VanKammen, A. (1988) Proteases involved in the processing of viral polyproteins. *Arch. Virol.* 98, 1–26.
- Whitaker-Dowling, P. and Youngner, J.S. (1987) Viral interference-dominance of mutant viruses over wild-type viruses in mixed infections. *Microbiol. Rev.* 51, 179–191.
- Worley, M. (1987) Feline coronavirus. In: M.J. Appel (Ed.), *Virus Infections of Carnivores*, pp. 431–436. Elsevier Science Publishers, New York.

(Received 6 July 1988; revision received 13 January 1989)