



# A nomogram combined with radiomics features, albuminuria, and metabolic syndrome to predict the risk of myometrial invasion of bladder cancer

Qi Zhou<sup>#</sup>, Zhiyu Zhang<sup>#</sup>, Xiaojie Ang, Haoyang Zhang, Jun Ouyang

Department of Urology, The First Affiliated Hospital of Soochow University, Suzhou, China

**Contributions:** (I) Conception and design: Q Zhou; (II) Administrative support: J Ouyang; (III) Provision of study materials or patients: Q Zhou, Z Zhang, X Ang, H Zhang; (IV) Collection and assembly of data: Q Zhou, H Zhang; (V) Data analysis and interpretation: Q Zhou, Z Zhang; (VI) Manuscript writing: All authors; (VII) Final approval of manuscript: All authors.

<sup>#</sup>These authors contributed equally to this work.

**Correspondence to:** Jun Ouyang, Department of Urology, The First Affiliated Hospital of Soochow University, No. 188, Shizi Street, Gusu District, Suzhou, China. Email: ouyangjun99@sina.com.

**Background:** To establish a preoperative prediction model of myometrial invasion of bladder cancer (BC) based on the radiomics characteristics of multi-parameter thin-slice enhanced computed tomography (CT) imaging.

**Methods:** Data from 100 patients with BC were analyzed retrospectively. The patients were divided into two groups: muscular invasive BC and non-muscular invasive BC. The tumor region was segmented from enhanced CT images (arterial- and venous-phase calibration maps) of all patients using Slicer-3D software. We extracted 1,223 texture features from tumor image data based on the shape and gray-level co-occurrence matrix, gray size region matrix, gray run-length matrix, adjacent gray difference matrix, and gray correlation matrix. The patients were randomly divided into a training group (n=70) and a verification group (n=30) in a 7:3 ratio. Interclass correlation coefficients >0.75, least absolute shrinkage, and selection operator regression were used for feature selection. The prediction model was established by combining Rad-score, independent clinical factors, and support vector machine (SVM), and a radiomics nomogram was constructed. The nomogram was tested using the consistency index, calibration curve, time-dependent receiver operating characteristic curve, and clinical decision curve to predict the myometrial invasion of the bladder preoperatively.

**Results:** Six radiomics features that were significantly related to myometrial invasion of BC were selected to construct a predictive model. The area under the curve (AUC) values of training group and verification group based on SVM were 0.898 (95% CI: 0.820–0.976) and 0.702 (95% CI: 0.495–0.909), respectively. Single factor and multiple factor analysis showed that albuminuria (95% CI: 0.243–2.206, P=0.0014) and metabolic syndrome (95% CI: 0.850–2.935, P<0.001) were independent influencing factors of BC myometrial invasion. Clinical factors and 11 radiomics features were used to construct a comprehensive model for predicting the pathological grade of BC (radiomics + clinical). After a comprehensive comparison, we found that the overall effectiveness of the model (radiomics + clinical) was the highest (AUC =0.8457).

**Conclusions:** Based on the multi-parameter thin-layer enhanced CT radiomics feature can be used as a potential independent predictor of BC myometrial invasion, the model based on parameters can initially quantitatively characterize the risk of myometrial invasion, and has excellent potential for predicting myometrial invasion of BC.

**Keywords:** Bladder cancer (BC); myometrial invasion; radiomics; metabolic syndrome; nomogram

Submitted Mar 09, 2021. Accepted for publication Jun 25, 2021.

doi: 10.21037/tcr-21-426

View this article at: <https://dx.doi.org/10.21037/tcr-21-426>

## Introduction

Bladder cancer (BC) is the most common and fatal tumor in the urinary system. Uroepithelioma is the most common histological type of BC, and it is more common in older men (1-3). Studies showed that 70% to 75% of patients with primary BC are limited to mucosa and submucosa, called non-muscular invasive BC (NMIBC). Radiotherapy, chemotherapy, and transurethral cystectomy are often used. The 5-year survival rate is 96% (4).

Nevertheless, about 25% to 30% of patients diagnosed with muscular infiltrating BC (MIBC) are often treated with radical cystectomy. The 5-year survival rate is only 33% and 75% (3,5). Data also showed that about 50% to 70% of patients with NMIBC suffer recurrences of the bladder tumor within 18 months after surgery or even progress to MIBC (6). Therefore, to achieve early preoperative prediction of MIBC, it is critical to select surgical methods and subsequent treatment. At present, there are very few reports predicting the risk of MIBC before surgery, and there are no specific indicators for predicting MIBC. However, there are many studies on the survival and treatment of MIBC. Measurements of PD-L1 and O-6-methylguanine methyltransferase are used in MIBC surgery, demonstrating adequate predictive ability (1,7). At present, the evaluation of preoperative MIBC depends on cystoscopic biopsy; however, this is an invasive examination accompanied by the risk of urethral infection and injury. Furthermore, because of the amount and location of samples, the accuracy of preoperative biopsy is low. Therefore, there is an urgent need to identify a new preoperative non-invasive diagnostic method to detect MIBC.

In recent years, with the development of medical image information processing technology, a large number of radiological features related to specific cancer have been extracted from images to provide clinicians with profound information that the human eye cannot directly obtain; these data assist clinicians in the diagnosis of cancer characteristics, creating an intense area of research (8-10). Lambin first proposed radiomics. The term refers to high-throughput extraction of radiological features converted into computable spatial data and texture classification using supervised or unsupervised methods; the technique has a solid ability to quantify heterogeneity (11). Many studies showed excellent effectiveness in differential diagnosis and pathological grading of diseases through imaging combined with machine learning algorithms (12). Investigators

suggested that diffusion weighted imaging (DWI)-based radiological characteristics are independent predictors of progression-free survival (PFS) in MIBC patients (13). Although the role of magnetic resonance imaging (MRI) in the diagnosis of BC has been reported (14), conventional images with echo-plane MRI sequences cannot recognize primary tumors. They may not be accurate in identifying local staging (15). In addition, MRI requires long acquisition times, high economic costs, and involves many scanning parameters, while computed tomography (CT) is faster and less expensive. Enhanced thin-slice CT images can reveal lesions more clearly, and they do not often omit edge texture information. Therefore, in this study, we built a prediction model based on multi-parameter CT combined with clinical risk factors to predict whether BC has invaded the myometrium before surgery accurately. We also developed a nomogram including radiological features and clinical risk factors.

We present the following article in accordance with the TRIPOD reporting checklist (available at <https://dx.doi.org/10.21037/tcr-21-426>).

## Methods

### Patients

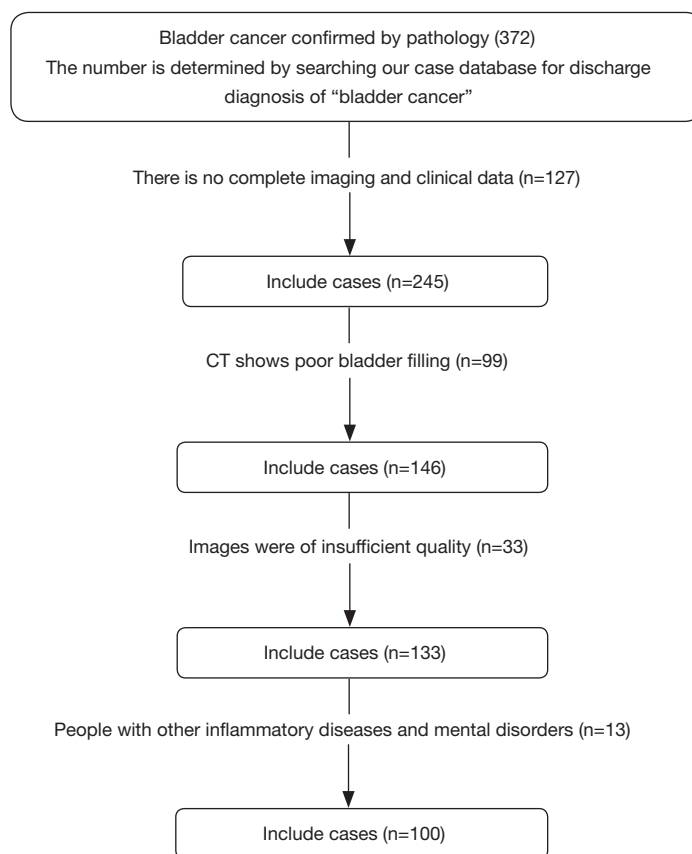
We gathered data of 100 patients with BC diagnosed after surgery in the first affiliated Hospital of Suzhou University from January 2014 to January 2018, including 50 cases of NMIBC and 50 cases of MIBC. According to the proportion of 7:3,100 patients were randomly divided into training and verification groups. The training group included 70 patients, and the verification group included 30 patients. Of these, 35 patients with MIBC were in the training group and 15 patients with MIBC were in the verification group. The clinical data in the training and verification groups showed no significant differences in the distribution of clinical characteristic variables between the two groups (*Table 1*,  $P>0.05$ ).

The corresponding preoperative multi-parameter CT data were collected, including arterial and venous phases. Using a semi-manual outline, two physicians delineated the three-dimensional (3D) tumor region of interest (ROI) from the calibrated CT images of each patient. The study was conducted in accordance with the Declaration of Helsinki (as revised in 2013). The study was approved by the Ethics Committee of the first affiliated Hospital of Suzhou University (2021162). All patients gave written

**Table 1** General information of patients in training group and verification group

Clinical features	Training group (n=70)			Verification group (n=30)		
	MIBC (n=35)	NMIBC (n=35)	P	MIBC (n=15)	NMIBC (n=15)	P
Age	70.00±10.99	66.2±13.52	0.202	64.67±10.57	64.47±7.01	0.952
Gender			0.042			1
Male	31 (88.6)	24 (68.6)		12 (80.0)	12 (80.0)	
Female	4 (11.4)	11 (31.4)		3 (20.0)	3 (20.0)	
BMI	22.49±3.09	23.43±2.94	0.196	25.84±3.90	24.03±3.33	0.183
Urine PH	6.16±0.76	6.17±0.74	0.937	6.03±0.69	6.03±0.67	1
Neutrophils	3.54±1.22	3.64±1.73	0.780	3.62±0.66	3.18±1.05	0.181
Lymphocyte	1.67±0.55	1.80±0.64	0.388	1.93±0.58	1.79±0.70	0.579
NLR	2.22±0.78	2.27±1.52	0.851	1.99±0.51	2.04±1.12	0.047
Urinary infection			0.019			0.716
Yes	29 (82.9)	20 (57.1)		9 (60.0)	10 (66.7)	
No	6 (17.1)	15 (42.9)		6 (40.0)	5 (33.3)	
Hematuria			0.364			0.702
Yes	30 (85.7)	27 (77.1)		10 (66.7)	11 (73.3)	
No	5 (14.3)	8 (22.9)		5 (33.3)	4 (26.7)	
Proteinuria			0.008*			0.028*
Yes	23 (65.7)	12 (34.3)		10 (66.7)	4 (26.7)	
No	12 (34.3)	23 (65.7)		5 (33.3)	11 (73.3)	
Number			0.502			1
Single	31 (88.6)	29 (82.9)		14 (93.3)	14 (93.3)	
Multiple (≥2)	4 (11.4)	6 (17.1)		1 (6.7)	1 (6.7)	
Diameter (mm)	28.58±13.50	20.63±11.29	0.009*	30.80±17.00	14.40±3.54	0.001*
MS			0.006*			0.002*
Yes	18 (51.4)	7 (20.0)		10 (66.7)	2 (13.3)	
No	17 (48.6)	28 (80.0)		5 (33.3)	13 (86.7)	
HBP			0.032			0.726
Yes	22 (62.9)	13 (37.1)		7 (46.7)	8 ()	
No	13 (37.1)	22 (62.9)		8 (53.3)	7 ()	
Triglyceride	1.49±0.87	1.37±0.66	0.510	1.82±0.91	1.81±1.18	0.985
HDL-C	1.21±0.29	1.31±0.58	0.368	1.14±0.25	1.14±0.24	0.988
Diabetes mellitus			0.399			0.481
Yes	18 (51.4)	14 (40.0)		8 (53.3)	6 (40.0)	
No	17 (48.6)	21 (60.0)		7 (46.7)	9 (60.0)	

\*, significant difference. Data presented as mean ± SD or n (%). BMI, Body mass index; MIBC, muscular infiltrating bladder cancer; NMIBC, non-muscular invasive bladder cancer; NLR, neutrophil-to-lymphocyte ratio; MS, metabolic syndrome; HBP, high blood pressure; HDL-C, High density lipoprotein cholesterol.



**Figure 1** The flow chart of patient screening.

informed consent.

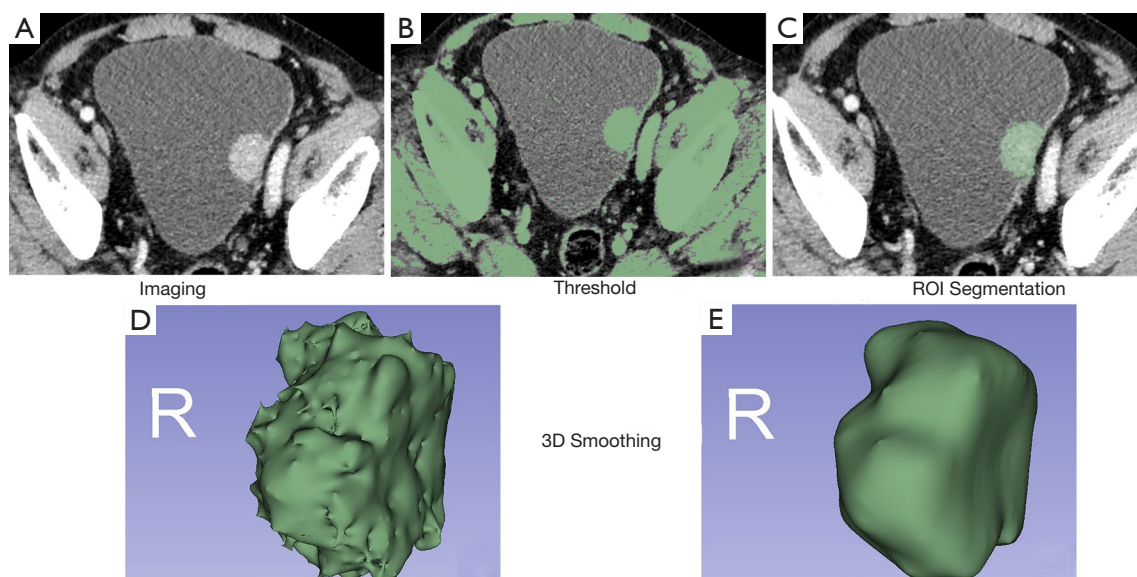
### **Selection criteria**

Inclusion criteria were as follows: (I) BC diagnosed pathologically after surgery with complete clinical and imaging data; (II) enhanced CT examinations of abdomen and pelvis performed on the same type of CT machine within two weeks before surgery, and the bladder was filled well; and (III) the diameter of the focus  $\geq 1$  cm, with the ability to examine an area of interest. Exclusion criteria were as follows: (I) CT showing poor bladder filling or the smallest diameter of the tumor  $< 1$  cm; (II) major organ dysfunction, such as kidney, liver, or heart; and (III) other inflammatory diseases or psychiatric disorders.

A total of 100 patients were enrolled and were randomly divided into training and verification groups according to the proportion of 7:3. The patient recruitment pathway is shown in *Figure 1*.

### **Image processing and data acquisition**

All patients underwent abdominal pelvic (bladder) arteriovenous phase CT examinations using Siemens 64-row spiral CT at our hospital. After image reconstruction, the uncompressed Digital Imaging and Communications in Medicine (DICOM) format data were uploaded to a picture archiving and communication system (PACS) system. The arterial phase and venous thin-layer image data of all patients were downloaded from the PACS system. The thin-slice images of the arterial and venous phases were imported into Slicer 3D software in DICOM format. The arterial- and venous-phase images were calibrated and combined into one image. Under the condition that the pathological results were unknown, a senior physician with more than five years' experience in urological imaging diagnosis and a urologist resident used the threshold and sphere brush functions of the texture analysis Slicer 3D software to outline the half-manual ROI of the bladder tumor lesions



**Figure 2** Semi-automatic three-dimensional segmentation of bladder tumor and the process of ROI drawing, the whole process was completed by 3D Slicer image editing software. The image is the original image of the patient after preoperative enhanced CT arteriovenous phase calibration (A). By setting the critical value of the image density parameter (Threshold), there is a significant difference between the density of bladder tumor and the density of surrounding tissue, which can better distinguish the tumor from (B). The outline of the tumor was drawn, including the mass boundary, and the image brush function (sphere brush) was used to outline the continuous semi-automatic section of (C). The 3D image (D) was obtained after the complete cutting of the tumor and the desired 3D image of the bladder tumor after smoothing (E).

and showed them in the form of 3D imaging. The sketched 3D images were processed using unified smoothing. We selected gray-level dependence matrix, Shape2D, gray-level co-occurrence matrix (GLCM), Shape3D, First-order, gray-level run-length matrix (GLRLM), gray-level size zone matrix, and neighboring gray-tone difference matrix feature parameters. Set resampling and filtering criteria were as follows: resampled voxel size (1, 1, 1), LoG kernel sizes (1, 1.5, 2, 2.5), and wavelet-based features (Figure 2). For multiple lesions, considering the heterogeneity among different individuals, only the most significant lesions were included.

#### **Data processing and feature extraction**

The Pyradiomics package based on Python was used to extract 3D image features from all segmented images, including first-order features, second-order features, high-order features, and wavelet-based features: (I) first-order features such as histogram features can describe the global characteristics of the whole ROI that are closely related to the frequency distribution of image gray-scale; (II) second-

order features such as those based on GLCM can describe the local distribution of image gray-scale; (III) high-order features such as those based on GLRLM can describe the regional distribution characteristics of gray-scale of an image. In the present study, 80 features were extracted from the specific gray-level tumor ROI of each mode, of which 1,223 features were extracted from first-order statistics (18 features), Shape3D (16 features), Shape 2D (14 features), GLCM (24 features), GLRLM (16 features), gray-level size zone matrix (16 features), neighboring gray-tone difference matrix (five features), and gray-level dependence matrix (14 features). To facilitate the processing of a large amount of data, the radiomics features were numbered as X1, X2, ... X1223. The preprocessing of characteristic data is essential. First, all the null values were processed and replaced by the median. To avoid over-fitting the model, two radiologists sketched the image data with ROI. The extracted texture parameters' consistency was evaluated using the intra-class correlation coefficient (ICC >0.8).  $P < 0.05$  indicated that the correlation was good. The mean values of two groups of parameters were included in the study. The dimensions of radiomics 1,223 features were reduced using



**Table 2** Assignment of related clinical factors

Characteristics	Assignment 1	Assignment 2
Gender	Female	Male
Urinary tract infection	No	Yes
Hematuria	No	Yes
Albuminuria	No	Yes
Quantity	Single	Multiple
MS	No MS	MS
BMI	BMI <25	BMI ≥25
Triglyceride (mmol/L)	<1.7	≥1.7
High blood pressure	SBP <140 or DBP <90 mmHg	SBP ≥140 or DBP ≥90 mmHg
Diabetes mellitus	Fasting blood glucose <6.1 mmol/L, Postprandial blood glucose two hours <7.8 mmol/L, Random blood glucose <11.1 mmol/L	Fasting blood glucose ≥6.1 mmol/L, Postprandial blood glucose two hours ≥7.8 mmol/L, Random blood glucose ≥11.1 mmol/L

MS, metabolic syndrome; BMI, body mass index; SBP, systolic blood pressure; DBP, diastolic blood pressure.

the Z-score so that all features were normalized to  $[-1, 1]$ , and the operation efficiency was improved. The data set was randomly divided into ten points to prevent over-fitting in the machine learning algorithm, combined with ten-fold cross-validation; seven groups were taken as training data and three groups as test data. We used operator least absolute shrinkage and selection operator (LASSO) and stepwise regressions to screen radiomics features from the training group and obtain practical features. Logical regression, decision tree, support vector machine (SVM), and Adaboost algorithm were used to build the model. The accuracy, sensitivity, specificity, and AUC were used as the evaluation indexes of the model.

#### ***Selection and assignment of clinical-related factors***

To construct the prediction model of bladder myometrial infiltration and perfect the model, we added gender, age, neutrophil-to-lymphocyte ratio (NLR), urinary pH, urinary tract infection, hematuria, albuminuria, body mass index (BMI), hypertension, diabetes, high-density lipoprotein (HDL-C), triglycerides, location, quantity, diameter, and other clinical traits. We screened out independent risk factors using univariate and multivariate analyses. Considering that we required substantial amounts of data and complex parameters to improve the operation efficiency and intuitive display, all the study parameters were assigned. The postoperative pathological diagnosis of bladder tumor with NMIBC was marked as “1” at the

time of classification and otherwise was marked as “2”. For the assignment of other clinical-related factors, please see *Table 2*. For the assignment of radiomics features, see <https://cdn.amegroups.com/static/public/tcr-21-426-1.xls>.

#### ***Prediction model construction***

The construction of the model was based on the optimal feature set of each ROI, and the final muscle penetration prediction model was constructed. The radiomics feature prediction model with the highest prediction efficiency was selected by comparing the accuracy, sensitivity, specificity, the area under the receiver operating characteristic (ROC) curve (AUC). To verify the four predictive models' predictive ability, the 10-fold cross-validation method was used, and 100 iterations were carried out. The predictive efficacy evaluation indicators included sensitivity, specificity, accuracy, and AUC. To establish a radiomics model of multiple logistic regression analysis based on radiomics markers and clinical features, all models were built on the training group and were tested on the verification group. The area under the ROC curve was used to test the model's performance and calculate its specificity, sensitivity, and accuracy. By comparing the clinical feature prediction model based on clinical feature index, the radiomics model based on image-marking, and the comprehensive model combined with clinical index, the comprehensive model with the best prediction ability was selected.

### Statistical software and methods

The software used in this study included 3D-Slicer (4.10.2-Win-amd 64), R-Studio (1.2.1335), and related software packages. The clinical-related factors were analyzed using SPSS22.0 software (International Business Machines Corporation, IBM), and the measured data was expressed as  $\bar{x} \pm s$ . T-test was used to compare the two groups of measurement data, and the counting data was compared by chi-square test. Independent risk factors were found by logistic regression. We compared the values of radiological features in the differential diagnosis of NMIBC and MIBC using a single-factor analysis of variance. The LASSO regression model was analyzed using the “glmnet” software package. We used the “proc” software package to draw ROC curves. The differences in AUC values among models were tested using the Delong test.  $P < 0.05$  (two-sided) was considered to indicate significance. The effectiveness of the model is expressed by the C-index, and the model is verified by the decision curve (DCA).

## Results

### Correlation analysis of clinical features

There were 70 patients in the training group and 30 patients in the verification group. Clinical information included gender, age, NLR, urinary pH, urinary tract infection, hematuria, albuminuria, BMI, hypertension, diabetes, HDL-C, triglycerides, location, quantity, diameter, and others. Using univariate analysis, clinical features with  $P > 0.05$  were excluded and included proteinuria, metabolic syndrome (MS), and diameter (Table 1). Multivariate analysis showed that only albuminuria and MS were independent predictors in the clinical factor model.

### Correlation analysis of radiomics characteristics

Of the 1,223 radiomics features extracted from CT images (arteriovenous-phase calibrated images), 841 had good inter-group and intra-group consistency ( $ICC \geq 0.75$ , mean = 0.77, median = 0.84; Figure 3A). We found significant differences between MIBC and MIBC in 624 radiomics features ( $P < 0.05$ ). We entered these into the LASSO regression model to select the most valuable features (Figure 3B). Finally, six features were used to construct the radiomics model (Table 3,  $P < 0.05$ ). This process used pROC and glmnetR software packages.

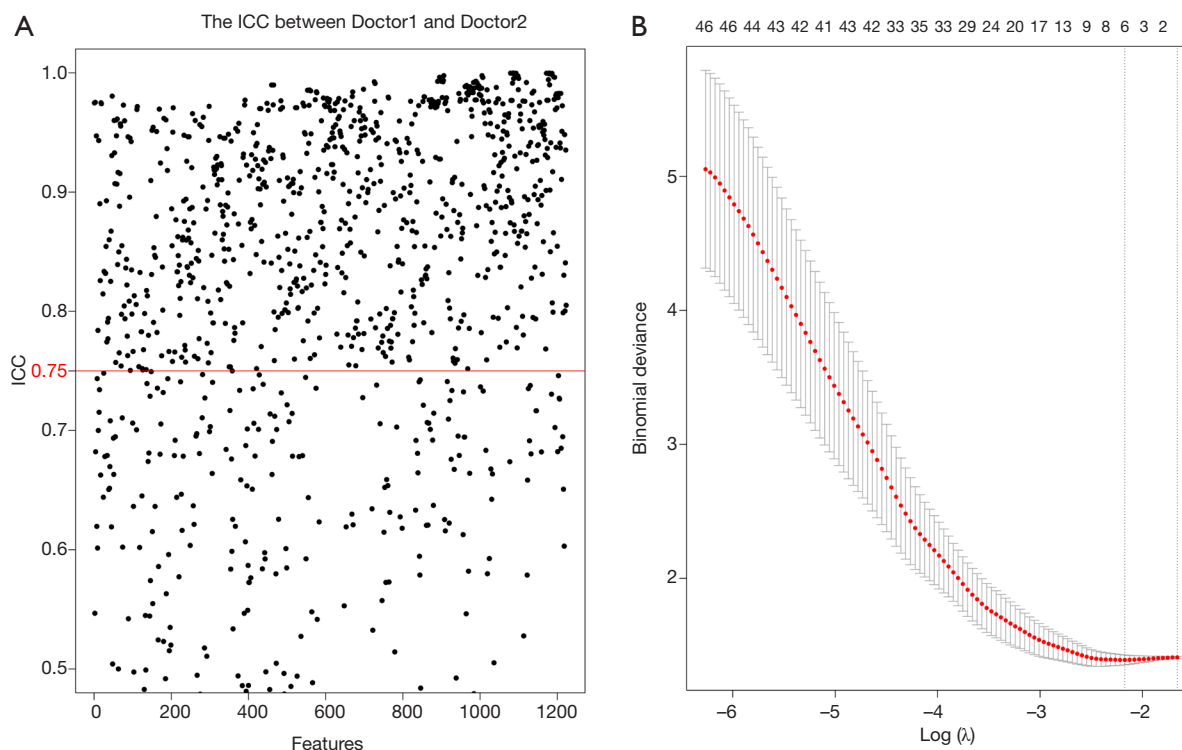
### Construction and selection of the model

We used six practical features to build the model. We built four models: logistic regression, decision tree, SVM, and Adaboost. Combining the accuracy, sensitivity, and specificity of the four models, we found that the model based on SVM was the most valuable (Table 4). The SVM model's accuracy, sensitivity, and specificity in the training group were 80.005%, 82.35%, and 80.56%, respectively, and the AUC was 0.867 (95% CI: 0.781–0.953). In the verification group, the accuracy, sensitivity, and specificity were 73.33%, 81.82%, and 68.42%, respectively, and the AUC was 0.782 (95% CI: 0.615–0.949; Figure 4).

### Performance evaluation of clinical prediction model and radiomics prediction model

Univariate and multivariate analysis showed that proteinuria and multiple sclerosis were independent risk factors for myometrial invasion in patients with BC. These findings suggest that patients with albuminuria before surgery are more likely to develop myometrial invasion. Similarly, patients with multiple sclerosis are more likely to have myometrial invasive BC. The training group established a clinical predictive model according to two risk factors. We evaluated and verified the model. Compared with the clinical predictive model, the ROC values of the radiomics model and the clinical predictive model in the training group were 0.796 and 0.747, respectively. The performance of the radiomics model was better than that of the clinical model, and the difference was not statistically significant ( $P = 0.531$ ). We added clinical factors to the radiomics model to obtain a comprehensive model (radiomics + clinical) and found that its prediction performance was the highest of the three models (AUC = 0.8457). Figure 5A shows the AUC curves of the three models. It can be seen that the efficacy of the clinical model combined with the radiomics model in predicting myometrial invasion of BC was significantly higher than that of the clinical and radiomics single model.

We then verified the decision curve of the comprehensive model (radiomics + clinical) and found that between 20% and 100% of the high-risk threshold, both models achieved better net returns than all of them; however, the integrated model was more valuable than the radiomics model. The decision curve analysis of the two models is shown in Figure 5B.



**Figure 3** Filter and screen radiomics features through intra-class correlation coefficient (ICC) and least absolute shrinkage and selection operator (LASSO). 841 were shown to have good inter-group and intra-group consistency ( $ICC \geq 0.75$ , mean =0.77, median =0.84) (A). Radiological features selection using the LASSO regression model. Cross-validation is used to screen the coefficients of each feature at the best log (lambda). As the  $\lambda$  value increases, the number of features becomes less and less. Use ten-fold cross-validation to generate coefficients corresponding to logarithmic ( $\lambda$ ) values (minimum variance). Draw vertical lines with six selected radiological features (B).

**Table 3** Radiological characteristics of constructing model

Radiological characteristics	Coef	Train (P)	Test (P)	95% CI
original_shape_Flatness	-2.5580	0.007	0.046	0.698–0.951
log-sigma-1-5-mm-3D_glszm_ZoneEntropy	-0.2429	0.002	0.064	0.730–0.933
wavelet-HLH_glrIm_RunVariance	-2.0495	0.001	0.059	0.635–0.906
wavelet-HHH_gldm _DependenceNonUniformityNormalized	3.9635	0.004	0.029	0.812–0.961
wavelet-LLL_gldm_DependenceVariance	2.0187	0.005	0.248	0.586–0.924
wavelet- LLL_glszm_ZoneEntropy	7.5914	0.002	0.011	0.842–0.963

### ***Establishment of radiological nomogram combined with clinical practice***

Albuminuria, MS, and Rad-score were incorporated into the construction of a radiomics nomogram (Figure 6). The calibration curve and Hosmer-Lemeshow test showed an excellent correction effect in the training set (Figure 7A,

$P=0.041$ ) and the verification set (Figure 7B,  $P=0.03$ ). To better apply the comprehensive model to clinical practice, we improved the model's accuracy and drew a nomogram to be more intuitive. The clinical model was combined with the radiomics model, and six radiomics features were used to simplify the model, in which we reduced the dimensions



**Table 4** Comparison of prediction performance of four models

Machine algorithm	Group	Accuracy (%)	Sensitivity (%)	Specificity (%)	95% CI	AUC
Logistic regression	Train	74.28	70.70	79.31	0.692–0.899	0.796
	Test	73.33	76.90	70.59	0.605–0.950	0.778
Decision tree	Train	80.00	82.35	80.56	0.781–0.953	0.867
	Test	73.33	81.82	68.42	0.615–0.949	0.782
SVM	Train	81.42	76.19	89.28	0.820–0.976	0.898
	Test	70.00	69.23	66.67	0.495–0.909	0.702
Adaboost	Train	74.28	65.71	82.85	0.641–0.844	0.743
	Test	63.33	53.33	73.33	0.459–0.808	0.633

SVM, support vector machine; Adaboost, adaptive boosting.

of six image parameters and expressed them as Rad-scores, as follows:

Rad-scores:  $\text{Log-sigma-1-5-mm-3D\_glszm\_ZoneEntropy}^* - 0.2429$

$+ \text{wavelet-HLH\_glrlm\_RunVariance}^* - 2.0495$

$+ \text{waveletHHH\_gldm\_DependenceNonUniformityNormalized}^* \times 3.9635$

$+ \text{wavelet\_LLL\_gldm\_DependenceVariance}^* \times 2.0187$

$+ \text{wavelet\_LLL\_glszm\_ZoneEntropy}^* \times 7.5914$

$- \text{original\_shape\_Flatness}^* - 2.5580$

The decision curve analysis showed that the radiomics nomogram combined with clinical factors had a higher overall net benefit in distinguishing myometrial invasion from non-myometrial invasion than the clinical factor model and the radiomics model.

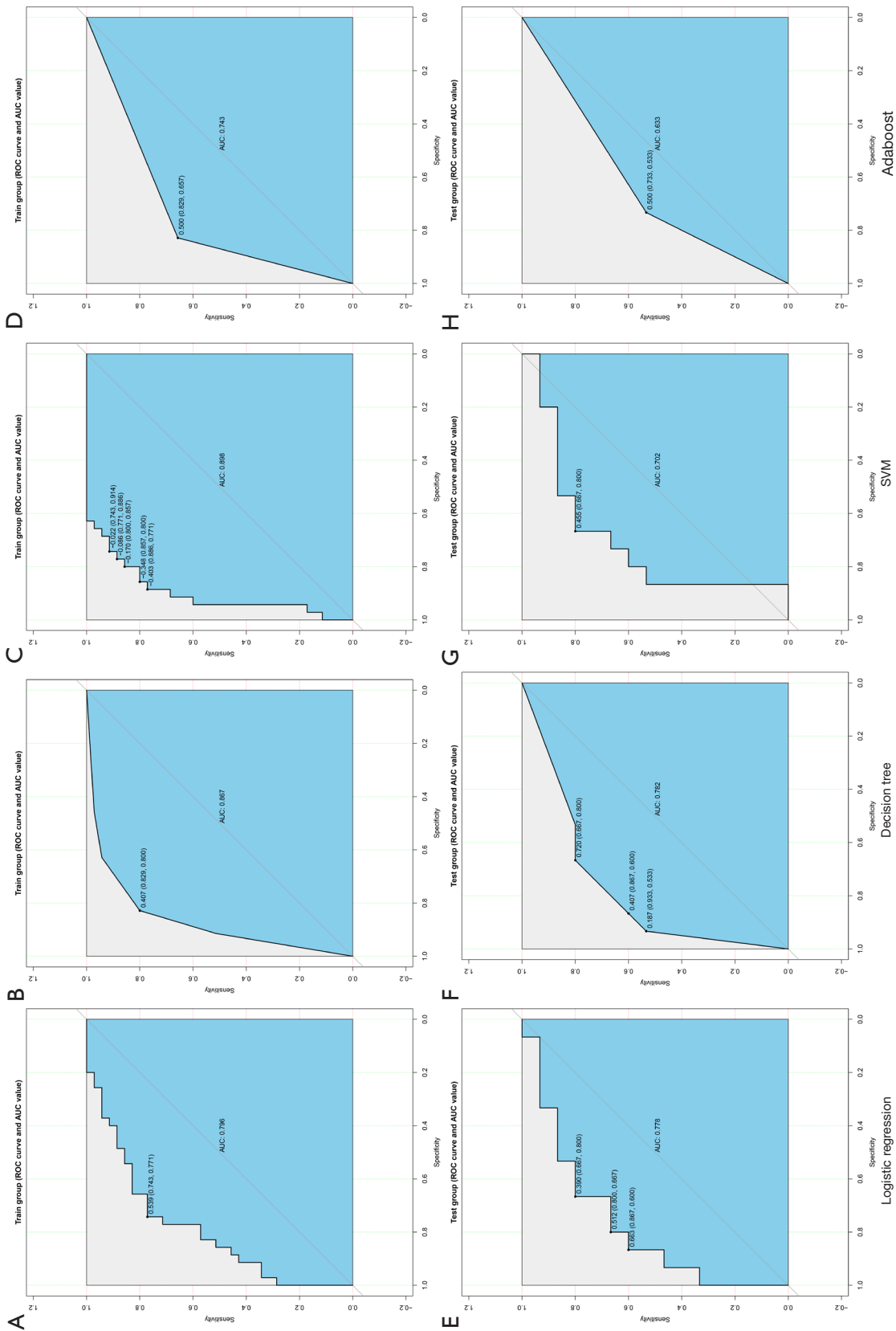
## Discussion

BC is a common malignant tumor of the urinary system. Identification of the muscular layer's infiltration is critical for the choice of treatment and outcome evaluation (16). A cystoscopic biopsy is often performed; however, there is a risk of urethral infection, injury, and implant metastasis (17,18). Over recent decades, many efforts have been made to develop diagnostic and predictive tools for MIBC; nevertheless, BC's recurrence and mortality rates remain high. In recent years, medical radiomics have shown great potential in the clinical diagnosis and prediction of BC. Many radiomics features related to specific cancers have been extracted from images, providing clinicians with profound information that human eyes can not directly obtain and help them diagnose cancer characteristics, becoming a current research hotspot. Studies showed that

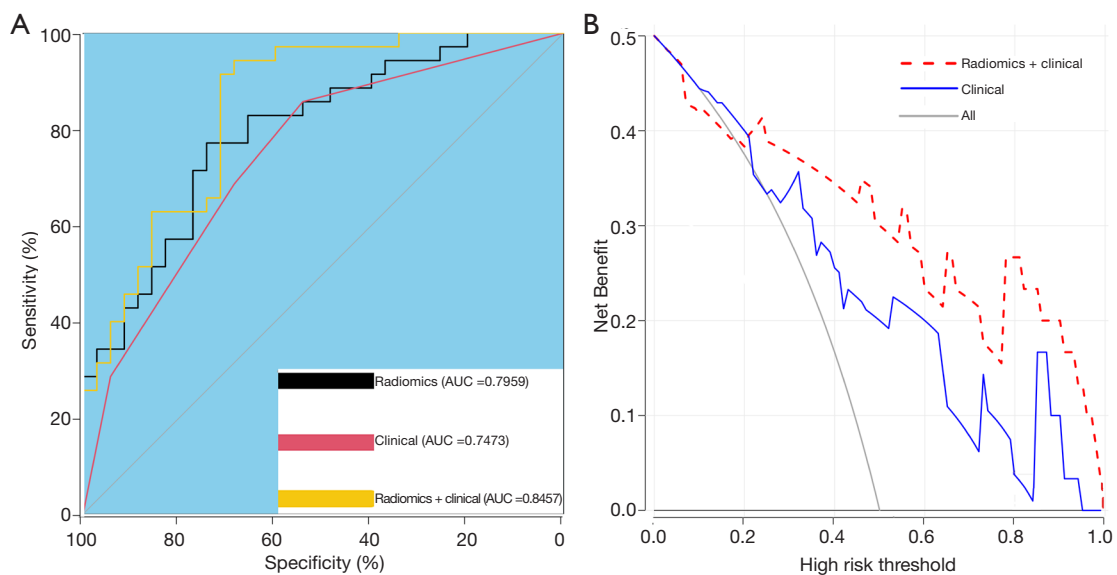
radiomics features predict the outcome and differentiation of MIBC (19,20). Other studies found that imaging parameters such as MRI distinguished BC from cystitis and aided differentiation of pathological grades of BC (21,22). There is an urgent need to develop objective and non-invasive techniques to distinguish NMIBC from MIBC before surgery and provide information to determine the necessity and adequacy of adjuvant therapy.

Radiological features based on enhanced CT were constructed and validated to predict myometrial invasion in patients with BC before surgery. We developed a predictive nomogram that includes radiomics features and clinical risk factors. There are two primary innovations in our study: (I) based on multi-parameter thin-layer CT, a large number of radiomics features were extracted, and a radiomics feature set was constructed to characterize the tumor heterogeneity differences between NMIBC and MIBC quantitatively; (II) based on feature recursive algorithm selection and the classification strategy of SVM, the feature subset with optimal prediction efficiency was identified, and a prediction model was constructed to achieve accurate prediction.

To effectively solve the problem of gray-scale differences between different thin layers of CT that cause severe impacts on the results of texture feature extraction, we first identified the largest tumor layer in multi-parameter enhanced CT images and completely outlined the whole tumor ROI. The three-dimensional ROI was used, which improved the resolution efficiency over two-dimensional regions of interest because the three-dimensional ROI considers all available slices. Whole tumor analysis appears to be a better indicator of tumor heterogeneity than the maximum cross-sectional area (23). Then, we extracted 1,223 radiomics features. Feature redundancy significantly



**Figure 4** The model is constructed using four algorithms. Logical regression radiology model: Train group (A) and Test group (E). Decision tree radiology model: Train group (B) and Test group (F). Support vector machine (SVM) model: Train group (C) and Test group (G). Aداboost: Train group (D) and Test group (H) radiology models were used. The four models are used to distinguish the characteristic ROC on NMIBC and MIBC. The areas under the curve of the training group were 0.796, 0.867, 0.898, and 0.743. As you can see, the SVM-based model is better than other models in both the training group and the verification group.

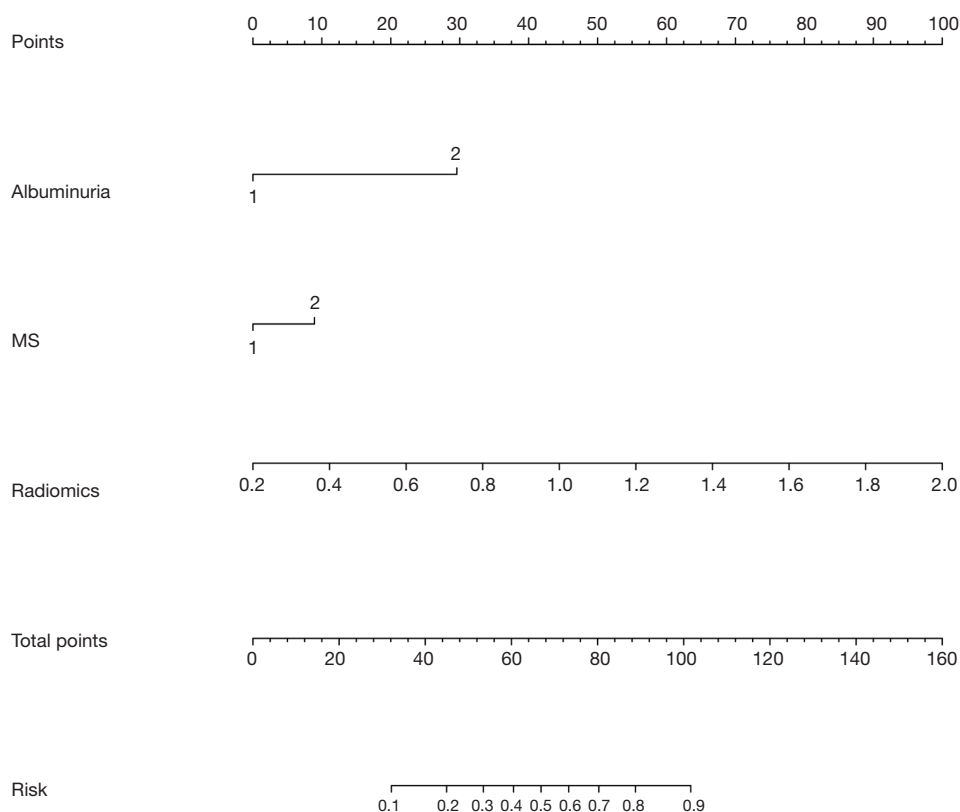


**Figure 5** ROC curve of the three models (Radiomics, Clinical and Radiomics + clinical) and The decision curve analysis of the two models (Clinical and Radiomics + clinical). Compared with the ROC curve of the three models, the efficacy of the comprehensive model combined with clinical factors was significantly higher than that of the image group model and clinical model (A). The red line and the blue line represent the net benefits of the comprehensive model and the imaging model, respectively. It can be seen that the benefit of the comprehensive model is the best. The Y-axis represents net income; the X-axis represents threshold probability. The curve shows that between about 20% and about 100% of the high-risk threshold, both models can achieve better net returns than all, but the comprehensive model is more valuable (B).

affects the model's prediction performance; therefore, we sought to reduce redundancy and the degree of overfitting of the model to effectively improve the model's all-around performance and generalization ability to predict myometrial invasion model BC. Based on 1,223 features extracted, the SVM-RFE method was used to select the optimal feature subset, which we then used to describe the image difference between NMIBC and MIBC quantitatively. We then showed that the optimal features selected using this feature selection method improved the model's prediction accuracy for muscle invasion of BC to 81.42%, and AUC increased to 0.898. Two of the six optimal features were gray-level difference matrix (GLDM) features, which quantify the gray-scale dependence in the image. Based on the gray-scale dependence in the quantized image, these features more effectively quantify the heterogeneity between NMIBC and MIBC. This finding suggests that image parameters can more effectively record and reflect the differences between NMIBC and MIBC, which can be used for feature extraction and prediction model construction.

The radiological features were screened from the

training group using LASSO regression and stepwise regression. The six useful features that constitute the imaging labels represent different textures and intensities in the image, reflecting the tumor tissue's heterogeneity. The "wavelet-LLL\_gldm\_DependenceVariance" reflects the variance of the size of dependencies in the measured ROI in CT images. The higher the eigenvalue, the finer the texture. In myometrial invasive BC, the eigenvalue was smaller ( $P=0.005$ , 95% CI: 0.586–0.924). "waveletHHH\_gldm\_DependenceNonUniformityNormalized" reflects the similarity of the correlation in the whole image. The lower the value, the higher the homogeneity of the correlation in the image. The characteristic value was lower in the MIBC, indicating that the tumor has a higher homogeneity with the bladder myometrium. The tumor tissue has invaded and mixed with the myometrium ( $P=0.029$ , 95% CI: 0.812–0.961). The "wavelet-LLL\_glszm\_ZoneEntropy" and "log-sigma-1-5-mm-3D\_glszm\_ZoneEntropy" are randomness in measuring region size and gray-scale distribution; higher values indicate higher heterogeneity in texture patterns. In NMIBC, its value is higher, which can be understood as the tumor not invading the muscular

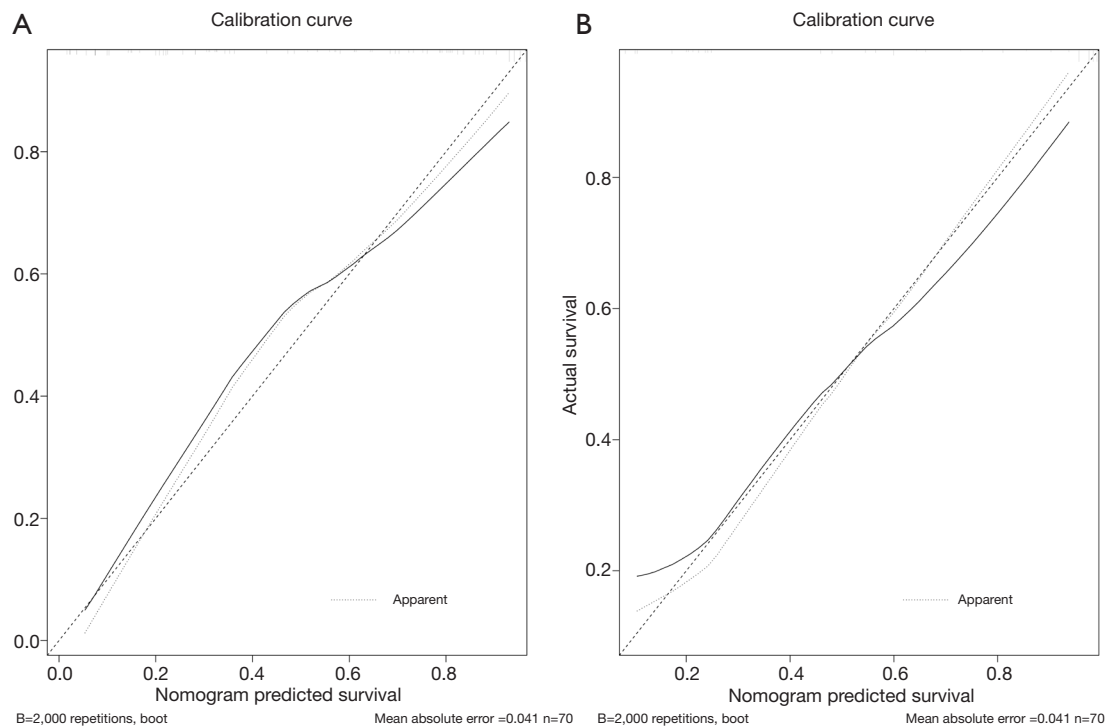


**Figure 6** Nomogram for predicting myometrial invasion of BC. Description: each variable is on its axis. Draw each vertical line up to the Point axis to determine the number of points for each variable. We added the points of each variable and positioned them on the total points axis. Draw a vertical line down to find out the possibility of clinical myometrial invasive BC.

layer, and the heterogeneity between the tumor and the muscular layer is high ( $P=0.02$ , 95% CI: 0.842–0.963 or  $P=0.02$ , 95% CI: 0.730–0.933). The “wavelet-HLH\_glrmlm\_RunVariance” is a measure of the change in run-length, and the eigenvalue was smaller in MIBC ( $P=0.059$ , 95% CI: 0.635–0.906). The “original\_shape\_Flatness” flatness shows the relationship between the largest and smallest principal components in an ROI shape. This value was higher in myometrial infiltration ( $P=0.007$ , 95% CI: 0.698–0.951). We constructed the four prediction models based on the training group and tested them in the verification group to achieve robust classification performance. Based on the accuracy, sensitivity, specificity, and AUC value of the model, the comprehensive effect of the model based on the SVM feature recursion algorithm was the best among the four models. The accuracy, specificity, and AUC value of the SVM model were the highest. For specific comparisons, see *Table 4*. In the model training group based on SVM, the

accuracy, sensitivity, specificity, and AUC were 81.42%, 76.19%, 89.28%, and 0.898, respectively 95% CI: 0.820–0.976. The accuracy, sensitivity, specificity, and AUC value in the verification group were 70.006%, 69.23%, 66.67%, and 0.702, respectively. 95% CI: 0.495–0.909. Based on the verification group, the overall effectiveness of the image group model based on SVM was better.

We included clinical data from 100 patients. Univariate and multivariate analyses showed that only albuminuria, MS, and diameter were significant independent predictors. Patients with albuminuria and MS before surgery were more likely to have MIBC after surgery. Considering that there was some overlap between diameter and shape in imaging features, it was not considered a related factor for constructing the clinical model. We established a clinical factor model by combining the clinical characteristics of albuminuria and MS as significant factors. The clinical factor model achieved a higher AUC value for



**Figure 7** The calibration curve shows the goodness of fit of the nomogram. The calibration curve of the nomogram was constructed by using the training group (A) and the calibration curve of the nomogram constructed by the verification group (B). The 45° dashed line represents the ideal prediction, and the black line represents the prediction performance of the nomogram. The closer the black line is to the ideal prediction line, the better the prediction effect of the model is.

distinguishing NMIBC from MIBC (0.747 in the training group and 0.80 in the verification group). To further improve the prediction model, we successfully constructed a new radiological-clinical prediction model based on radiological characteristics and clinical factors and developed a nomogram (Figure 6). The radiological-clinical nomogram had an excellent predictive value for distinguishing NMIBC from MIBC and calibrating them to obtain the calibration curve shown by Figure 7.

The novelty of this study can be summarized as follows: (I) this is the first study to use multi-parameter thin-layer enhanced CT radiological features to predict the myometrial invasion of bladder tumor before surgery; (II) the features based on signal intensity histogram and three-dimensional ROI were used to reflect the intensity and spatial changes of various maps to characterize the heterogeneity of tumors better; (III) the methods of sample rebalancing and feature selection were used to enhance the prediction performance; (IV) combined with clinical specific factors, a radiological-clinical prediction model was

constructed, and a predictive nomogram was developed.

The radiological features based on multi-parameter enhanced CT have great potential for predicting BC recurrence. This study was a retrospective analysis. There are some limitations, including low original sample size, slightly different drug metabolic cycles in patients with CT enhancement, and individual differences in the diffusion of contrast agents. In a follow-up study, we will collect more CT data from eligible patients to increase the collection of myometrial infiltration samples and carry out a more comprehensive analysis and verification of these findings.

## Conclusions

Based on the multi-parameter thin-layer enhanced CT radiomics feature can be used as a potential independent predictor of BC myometrial invasion, the model based on parameters can initially quantitatively characterize the risk of myometrial invasion, and has excellent potential for predicting myometrial invasion of BC.



## Acknowledgments

*Funding:* This work was supported by the Suzhou Science and Technology Project (SLJ201906 and SYS2019053).

## Footnote

*Reporting Checklist:* The authors have completed the TRIPOD reporting checklist. Available at <https://dx.doi.org/10.21037/tcr-21-426>

*Data Sharing Statement:* Available at <https://dx.doi.org/10.21037/tcr-21-426>

*Conflicts of Interest:* All authors have completed the ICMJE uniform disclosure form (available at <https://dx.doi.org/10.21037/tcr-21-426>). The authors have no conflicts of interest to declare.

*Ethical Statement:* The authors are accountable for all aspects of the work in ensuring that questions related to the accuracy or integrity of any part of the work are appropriately investigated and resolved. The study was conducted in accordance with the Declaration of Helsinki (as revised in 2013). The study was approved by the Ethics Committee of the first affiliated Hospital of Suzhou University (2021162). All patients gave written informed consent.

*Open Access Statement:* This is an Open Access article distributed in accordance with the Creative Commons Attribution-NonCommercial-NoDerivs 4.0 International License (CC BY-NC-ND 4.0), which permits the non-commercial replication and distribution of the article with the strict proviso that no changes or edits are made and the original work is properly cited (including links to both the formal publication through the relevant DOI and the license). See: <https://creativecommons.org/licenses/by-nc-nd/4.0/>.

## References

1. Kaseb H, Aeddula NR. Bladder Cancer. StatPearls. Treasure Island (FL): StatPearls Publishing, StatPearls Publishing LLC.; 2020.
2. Kobayashi T, Owczarek TB, McKiernan JM, et al. Modelling bladder cancer in mice: opportunities and challenges. *Nat Rev Cancer* 2015;15:42-54.
3. Sanli O, Dobruch J, Knowles MA, et al. Bladder cancer. *Nat Rev Dis Primers* 2017;3:17022.
4. Babjuk M, Burger M, Compérat E, et al. Reply to Harry Herr's Letter to the Editor re: Marko Babjuk, Andreas Böhle, Maximilian Burger, et al. EAU Guidelines on Non-muscle-invasive Urothelial Carcinoma of the Bladder: Update 2016. *Eur Urol* 2017;71:447-61. *Eur Urol* 2017;71:e173-4.
5. Alfred Witjes J, Lebre T, Compérat EM, et al. Updated 2016 EAU Guidelines on Muscle-invasive and Metastatic Bladder Cancer. *Eur Urol* 2017;71:462-75.
6. Fritsche HM, Burger M, Svatek RS, et al. Characteristics and outcomes of patients with clinical T1 grade 3 urothelial carcinoma treated with radical cystectomy: results from an international cohort. *Eur Urol* 2010;57:300-9.
7. Lee DH, Jeong JY, Song W. Prognostic Value of Programmed Death Ligand-1 Expression on Tumor-Infiltrating Immune Cells in Patients Treated with Cisplatin-Based Combination Adjuvant Chemotherapy Following Radical Cystectomy for Muscle-Invasive Bladder Cancer: A Retrospective Cohort Study. *Onco Targets Ther* 2021;14:845-55.
8. Lambin P, Leijenaar RTH, Deist TM, et al. Radiomics: the bridge between medical imaging and personalized medicine. *Nat Rev Clin Oncol* 2017;14:749-62.
9. Luo C, Huang B, Wu Y, et al. Use of Vesical Imaging-Reporting and Data System (VI-RADS) for detecting the muscle invasion of bladder cancer: a diagnostic meta-analysis. *Eur Radiol* 2020;30:4606-14.
10. Wang H, Hu D, Yao H, et al. Radiomics analysis of multiparametric MRI for the preoperative evaluation of pathological grade in bladder cancer tumors. *Eur Radiol* 2019;29:6182-90.
11. Shaikh F, Franc B, Allen E, et al. Translational Radiomics: Defining the Strategy Pipeline and Considerations for Application-Part 2: From Clinical Implementation to Enterprise. *J Am Coll Radiol* 2018;15:543-9.
12. Lu Y, Liu L, Luan S, et al. The diagnostic value of texture analysis in predicting WHO grades of meningiomas based on ADC maps: an attempt using decision tree and decision forest. *Eur Radiol* 2019;29:1318-28.
13. Zhang S, Song M, Zhao Y, et al. Radiomics nomogram for preoperative prediction of progression-free survival using diffusion-weighted imaging in patients with muscle-invasive bladder cancer. *Eur J Radiol* 2020;131:109219.
14. Panebianco V, De Berardinis E, Barchetti G, et al. An evaluation of morphological and functional multiparametric MRI sequences in classifying non-muscle and muscle invasive bladder cancer. *Eur Radiol*

- 2017;27:3759-66.
15. van der Pol CB, Chung A, Lim C, et al. Update on multiparametric MRI of urinary bladder cancer. *J Magn Reson Imaging* 2018;48:882-96.
  16. Flaig TW, Spiess PE, Agarwal N, et al. NCCN Guidelines Insights: Bladder Cancer, Version 5.2018. *J Natl Compr Canc Netw* 2018;16:1041-53.
  17. Jakse G, Algaba F, Malmström PU, et al. A second-look TUR in T1 transitional cell carcinoma: why? *Eur Urol* 2004;45:539-46; discussion 546.
  18. Miladi M, Peyromaure M, Zerbib M, et al. The value of a second transurethral resection in evaluating patients with bladder tumours. *Eur Urol* 2003;43:241-5.
  19. Wang HJ, Pui MH, Guo Y, et al. Diffusion-weighted MRI in bladder carcinoma: the differentiation between tumor recurrence and benign changes after resection. *Abdom Imaging* 2014;39:135-41.
  20. Xu X, Liu Y, Zhang X, et al. Preoperative prediction of muscular invasiveness of bladder cancer with radiomic features on conventional MRI and its high-order derivative maps. *Abdom Radiol (NY)* 2017;42:1896-905.
  21. Wang HJ, Pui MH, Guo Y, et al. Preliminary study of diffusion-weighted MRI in the preoperative diagnosis of cystitis glandularis. *Clin Radiol* 2016;71:937.e1-4.
  22. Wang HJ, Pui MH, Guo Y, et al. Multiparametric 3-T MRI for differentiating low-versus high-grade and category T1 versus T2 bladder urothelial carcinoma. *AJR Am J Roentgenol* 2015;204:330-4.
  23. Ng F, Kozarski R, Ganeshan B, et al. Assessment of tumor heterogeneity by CT texture analysis: can the largest cross-sectional area be used as an alternative to whole tumor analysis? *Eur J Radiol* 2013;82:342-8.

**Cite this article as:** Zhou Q, Zhang Z, Ang X, Zhang H, Ouyang J. A nomogram combined with radiomics features, albuminuria, and metabolic syndrome to predict the risk of myometrial invasion of bladder cancer. *Transl Cancer Res* 2021;10(7):3177-3191. doi: 10.21037/tcr-21-426