

RESEARCH ARTICLE

Shape and position of the node and notochord along the bilateral plane of symmetry are regulated by cell–extracellular matrix interactions

Maria Pulina*, Dong Liang and Sophie Astrof[‡]

ABSTRACT

The node and notochord (and their equivalents in other species) are essential signaling centers, positioned along the plane of bilateral symmetry in developing vertebrate embryos. However, genes and mechanisms regulating morphogenesis of these structures and their placement along the embryonic midline are not well understood. In this work, we provide the first evidence that the position of the node and the notochord along the bilateral plane of symmetry are under genetic control and are regulated by integrin $\alpha 5\beta 1$ and fibronectin in mice. We found that the shape of the node is often inverted in integrin $\alpha 5$ -null and fibronectin-null mutants, and that the positioning of node and the notochord is often skewed away from the perceived plane of embryonic bilateral of symmetry. Our studies also show that the shape and position of the notochord are dependent on the shape and embryonic placement of the node. Our studies suggest that fibronectin regulates the shape of the node by affecting apico-basal polarity of the nodal cells. Taken together, our data indicate that cell–extracellular matrix interactions mediated by integrin $\alpha 5\beta 1$ and fibronectin regulate the geometry of the node as well as the placement of the node and notochord along the plane of bilateral symmetry in the mammalian embryo.

KEY WORDS: Fibronectin, Integrin alpha 5, Extracellular matrix, Node, Notochord, Bilateral symmetry

INTRODUCTION

Development of the embryonic midline structures is an essential process during embryogenesis, yet it remains poorly understood (Mikawa et al., 2004; Stemple, 2005). One of the earliest known events leading to the establishment of the embryonic midline is induction of the primitive streak through the expression of *Vg1* by cells of the posterior marginal zone in chick embryos (Wei and Mikawa, 2000). The primitive streak in the chick and mouse is the first morphological structure marking the plane of bilateral symmetry in the developing embryo. The anterior part of the primitive streak is molecularly distinct from the posterior

primitive streak and gives rise to two other essential midline structures, the node and the notochord (Lee and Anderson, 2008).

Proper development of the node and the notochord are requisite for the ensuing vertebrate development (Meno et al., 1998; Stemple, 2005; Shiratori and Hamada, 2006). These structures are required for the establishment and maintenance of the left–right embryonic axis, which, in turn, is essential for the development and proper function of all visceral organs (Burdine and Schier, 2000; Tabin, 2006; Yashiro et al., 2007; Lee and Anderson, 2008). In addition, the notochord provides essential structural and organizing functions during development; factors synthesized by the notochord are essential for the establishment of the dorso-ventral polarity of the neural tube, patterning of the definitive endoderm, and development of the dorsal aorta and the heart, among others (Fouquet et al., 1997; Sumoy et al., 1997; Goldstein and Fishman, 1998; Stemple, 2005; Bressan et al., 2009). Defective development and differentiation of the node and the notochord give rise to severe embryonic defects in model organisms and cause birth defects in humans (Almog et al., 2001; Ramsdell, 2005; Turgut et al., 2006).

Embryonic development involves finely orchestrated interactions among cells and tissues derived from every germ layer. Thus the position, shape and function of each organ and structure are important and ultimately depend on interactions of cells with their extracellular microenvironment. For example, deletion of laminin $\gamma 1$, a component of 10 laminin heterotrimers (Yurchenco, 2011), leads to embryonic demise before gastrulation due to defective formation of the Reichert's membrane (Miner and Yurchenco, 2004); deletion of integrin $\beta 1$ chain, a component of the twelve known integrin heterodimers is lethal before implantation (Wickström et al., 2011). Similarly, absence of cytoplasmic mediators propagating signals from the ECM such as talins or kindlins, also lead to early embryonic lethality (Wickström et al., 2011). Interestingly, in the examples described above, the main causes of aberrant embryonic morphogenesis, even at the earliest stages, are thought to be defective establishment and/or maintenance of cell polarity.

Integrins are a major class of transmembrane proteins connecting the extracellular matrix (ECM) proteins with the cytoskeletal machinery regulating cellular responses to ECM (Hynes, 2002; Whittaker and Hynes, 2002; Whittaker et al., 2006). Integrins are heterodimers composed of one alpha and one beta subunits, both chains are type-I transmembrane proteins. There are 18 known integrin alpha chains and 8 known integrin beta chains in mammals giving rise to twenty-four different integrin heterodimers with unique and overlapping specificities for their extracellular ligands (Huttenlocher and Horwitz, 2011). Integrin $\alpha 5$ is known to exclusively heterodimerize with integrin

Department of Medicine, Center for Translational Medicine, Thomas Jefferson University, Philadelphia, PA 19107, USA.

*Present address: Laboratory of Molecular and Cellular Neuroscience, Rockefeller University, New York, NY 10065, USA.

[‡]Author for correspondence (sophie.astrof@gmail.com)

This is an Open Access article distributed under the terms of the Creative Commons Attribution License (<http://creativecommons.org/licenses/by/3.0>), which permits unrestricted use, distribution and reproduction in any medium provided that the original work is properly attributed.

Received 4 March 2014; Accepted 1 May 2014

$\beta 1$ (Hynes, 2002); the integrin $\alpha 5\beta 1$ heterodimer is a major receptor for fibronectin (FN1), a large ECM protein essential for embryonic development and adult homeostasis (Hynes, 2009; Hynes, 2012). In vitro experiments demonstrated that the binding of $\alpha 5\beta 1$ to FN1 leads to activation of extracellular signal-regulated kinases (Erks) and other intracellular signal mediators regulating cell migration, survival and proliferation (Schwartz, 2010; Geiger and Yamada, 2011; Huttenlocher and Horwitz, 2011; Wickström et al., 2011). Other cell-surface integrins can also function as FN1 receptors, and include αv -containing integrin heterodimers, as well as integrins $\alpha 4\beta 1$, $\alpha 8\beta 1$, and $\alpha 9\beta 1$ (Wickström et al., 2011). However, when compared with the deletion of any other integrin alpha chain, genetic ablation of integrin $\alpha 5$ leads to the most severe embryonic phenotype, which is also similar to the phenotype of FN1-null embryos (George et al., 1993; Yang et al., 1993; George and Hynes, 1994; George et al., 1997; Takahashi et al., 2007). Consistent with in vitro studies, mouse mutants expressing a defective form of FN1, in which $\alpha 5\beta 1$ binding motif Arg–Gly–Asp is mutated, develop phenotypes comparable with those of integrin $\alpha 5$ -null embryos (Takahashi et al., 2007). Studies from our own lab demonstrated that integrin $\alpha 5\beta 1$ and FN1 play similar roles in the development of the cardiac neural crest, formation of the heart and in establishment and maintenance of the left–right body plan (Mittal et al., 2010; Pulina et al., 2011; Mittal et al., 2013). Taken together, these data indicate that in early embryogenesis, integrin $\alpha 5\beta 1$ is a major modulator of signaling by FN1 and that cell–ECM interactions mediated by the binding of integrin $\alpha 5\beta 1$ to FN1 play essential roles in embryonic development.

In this paper we report our novel findings that integrin $\alpha 5\beta 1$ and its ligand FN1 are essential for the development and the placement of the node and the notochord along the embryonic plane of bilateral symmetry. We also show that the proper geometry of the node is essential for the proper shape and placement of the notochord relative to the embryonic plane of bilateral symmetry.

MATERIALS AND METHODS

Animal models

FN1 and integrin $\alpha 5$ null mutations were generated by the Richard Hynes lab (Yang et al., 1993; George et al., 1997) and are available from the Jackson labs. FN1-null or integrin $\alpha 5$ -null embryos were obtained by mating heterozygous adult mice of C57BL/6J genetic background. All experiments involving vertebrate animals were approved by the Institutional Animal Care and Use Committee of Weill Cornell Medical School and Thomas Jefferson University, and were performed in accordance with federal guidelines for humane care of animals.

Microscopy

Scanning electron microscopy, in situ hybridization and confocal fluorescence microscopy were performed as described (Pulina et al., 2011). For scanning electron microscopy, embryos were collected in the evening of embryonic day (E) 7.5. For immunofluorescence and in situ hybridization experiments, embryos were collected at E8.0 and ranged from the late headfold stage, as defined by Downs and Davies to the 4 somite stage (Downs and Davies, 1993). We used Imaris software (Bitplane) to perform 3D reconstructions of confocal data and for data analysis. Controls and mutants were stained simultaneously using the same solutions, in the same Eppendorf tubes or glass vials, and imaged on the same days using identical microscope settings. The images were then manipulated utilizing Imaris software, using identical settings for manipulation of image brightness and background. When integrin $\alpha 5$ -null mutants were analyzed, their wild-type or heterozygous littermates served as controls. Similarly, when FN1-null mutants were analyzed, their wild-type or heterozygous littermates were used as controls. All

embryos were genotyped by using yolk sacs as described (Goh et al., 1997; Astrof et al., 2007).

RESULTS AND DISCUSSION

Integrin $\alpha 5\beta 1$ regulates the shape and position of the node and notochord

Our earlier studies demonstrated that integrin $\alpha 5$ regulates the development of the left–right axis of asymmetry (Pulina et al., 2011). In order to determine the function of integrin $\alpha 5$ during left–right axis formation, we examined formation of the mouse node in integrin $\alpha 5$ -null mutants using scanning electron microscopy (SEM) and found that the node is formed aberrantly in all examined mutants, $n=10$ (Fig. 1; Table 1). In control embryos, the nodes were always oriented such that the pointy, narrow end of the node was facing the anterior of the embryo (Fig. 1A). The node was invaginated with a characteristic “tear-drop shape”, and was aligned with the bilateral plane of embryonic symmetry (Lee and Anderson, 2008). However, nodes in all integrin $\alpha 5$ -null embryos were flattened and aberrant in shape (Fig. 1B,C,G). In 2 out of 10 integrin $\alpha 5$ -null mutant embryos, nodes were oriented correctly, with the narrow end pointing in the anterior direction (Fig. 1D), while in 6 out of 10 integrin $\alpha 5$ -null mutants, nodes were inverted in shape, such that the narrow end of the node was facing the posterior instead of the anterior of the embryo (Table 1). We define the “inverted node phenotype” as that of a flipped triangle, in which the narrow end is facing the posterior, while the wide side is facing the anterior of the embryo (schematic inset in Figs 4, 5). This is a 180° rotation along the left–right axis of the embryos. Fig. 1B,C shows 2 examples of such nodes.

Interestingly, despite the apparent shape inversion, the anterior–posterior specification of the node and the cells within the node was preserved. For example, the cilia emanating from the ventral surface of these inverted nodes were positioned toward the posterior region of nodal cells (Fig. 1A',B', Fig. 2), and the presumptive notochordal cells were always seen coming out of the anterior-facing side of the node (Figs 1, 2, 4, 5, 6). Thus, while integrin $\alpha 5$ is required to generate the proper geometry of the node, it is not essential for the establishment of the anterior–posterior embryonic or cellular axis. These findings are consistent with prior studies demonstrating that the node is not essential for establishing anterior–posterior polarity of the developing mouse embryo (Davidson et al., 1999).

Other examined integrin $\alpha 5$ -mutants ($n=2$ of 10) had narrow, disrupted nodes (Fig. 1G) with some of the node cells located underneath the large cells of the visceral endoderm (Fig. 1G,G'). This suggests that integrin $\alpha 5$ may play a role in the process of intercalation, during which mesendodermal cells of the midline push the cells of the visceral endoderm apart and appear on the embryonic surface (Lee and Anderson, 2008). This process of intercalation is also important for the development of the definitive endoderm (Kwon et al., 2008), and indeed, we found that the gut in integrin $\alpha 5$ -null embryos or FN1-null embryos did not form properly (Villegas et al., 2013). Two out of ten integrin $\alpha 5$ -null mutants examined by SEM had a node with the narrow end positioned in a proper anterior–posterior orientation (Fig. 1D). Unlike the control, the nodal pits in these mutants were shallow and irregular in shape.

The 3D shape of the mouse node is thought to be important for the establishment of the left–right body plan (Cartwright et al., 2004), and mouse mutants, in which the shape of the node is altered exhibit randomized left–right body plan (Lee and

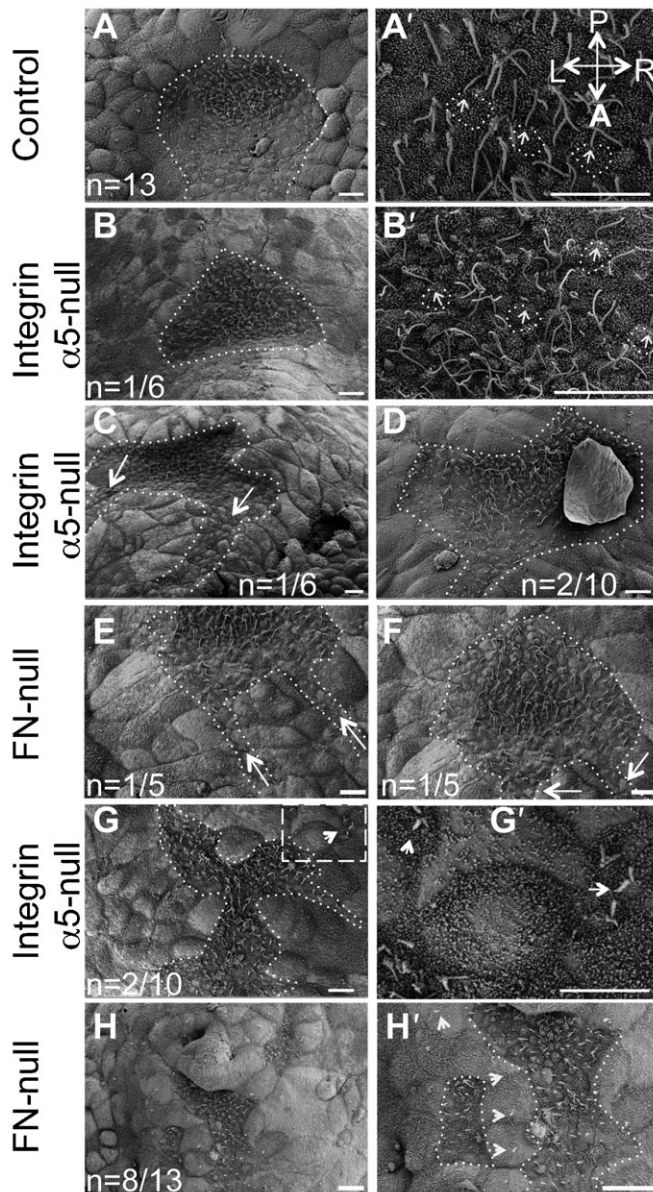


Fig. 1. Integrin $\alpha 5$ and fibronectin are required for morphogenesis of the mouse node. (A,A') Shape of the node in the control mouse embryo at E7.5. (A) The dotted line outlines the entire shape of the node. (A') Primary cilia (arrows) are positioned at the posterior of nodal cells (some examples are outlined). (B,B',C,D,G,G') Node shapes are aberrant in integrin $\alpha 5$ -null E7.5 embryos. (B) Notice the inverted shape of the node in this integrin $\alpha 5$ -null mutant. Nodes were inverted in 6 out of 10 integrin $\alpha 5$ -null mutants. (B,C) Examples of such inverted nodes. (B') Magnified view of cilia in the node shown in panel B. Each primary cilium (arrows) is positioned at the posterior of each cell (outlined). (C) Note two notochords emanating from each corner of a mutant node (dotted line, arrows). (D) The pointy end of the node was positioned in a correct orientation in 2/10 integrin $\alpha 5$ -null mutant nodes (dotted line outlines the node and the notochord). (E,F,H,H') Aberrant nodes in E7.5 FN1-null mutants. (E,F) Two examples of inverted nodes in FN1-null mutants. Nodes were inverted in 5 out of 13 FN1-null mutants. (G,H) In some $\alpha 5$ -null and FN1-null mutants, the nodes were narrow and disrupted. (G',H') Magnified views of panels G and H. Areas containing node cells are outlined. Arrows point to cilia protruding from beneath the cells of the primitive endoderm. A—anterior, P—posterior, L—left and R—right axes are marked and their directions are the same in all panels. Scale bars: 10 μ m.

Anderson, 2008; Lee et al., 2010). Thus defective establishment of the left–right axis in integrin $\alpha 5$ -null mutants (Pulina et al., 2011) can be explained by aberrant morphogenesis of the node. Taken together, our studies indicate that integrin $\alpha 5\beta 1$ plays an important role in embryo development by regulating node morphogenesis and the establishment of the left–right body plan.

Fibronectin regulates the geometry and midline placement of the node and notochord

FN1 is a major extracellular ligand for the integrin $\alpha 5\beta 1$ (Hynes, 2012). If integrin $\alpha 5\beta 1$ regulates formation of the stereotypical shape of the mouse node by binding FN1, we would expect to find shallow, inverted and disrupted nodes in FN1-null mutants as well. Indeed, our SEM studies showed that in 5 out of 13 FN1-null mutants had inverted nodes and 8 out of 13 FN1-null mutants had narrow and discontinuous nodes (Fig. 1E,F,H,H'), consistent with our previous study (Pulina et al., 2011). We found that, like in integrin $\alpha 5$ -null mutants, the presumptive notochordal cells originated from either corner of the anterior-facing mutant node (Fig. 1E,F, two different examples of mutant nodes are shown). Similar to integrin $\alpha 5$ -null mutants, the primary cilia on the ventral cells of FN1-null nodes were properly positioned toward the cells' posterior (Fig. 2C,C'). These findings suggest that FN1 and its major integrin receptor $\alpha 5\beta 1$ regulate geometry of the node but not the overall anterior–posterior polarity of the embryo or of the cells composing the node.

Fibronectin regulates apico-basal polarity of nodal cells

We hypothesized that defective node morphogenesis in FN1-null mutants was caused by defective apico-basal polarity of the cells composing the node. To test this idea, we stained control and mutant embryos using rhodamine-conjugated phalloidin to detect F-actin. In addition, control and FN1-null embryos were co-stained using antibodies to acetylated α -tubulin (components of stable microtubules, including those inside the primary cilia) or antibodies to the ciliary protein Arl13b, which localizes to primary cilia (Caspary et al., 2007). The ventral-most cells of the wild-type node are apically constricted and assemble F-actin rings at the constricted, ventral-most surfaces of nodal cells (Fig. 3A,A') (Lee and Anderson, 2008). Another notable feature of the properly apically polarized cells of the wild-type node is the presence of stable microtubules and the primary cilia at the apical side of the ventral-most cells of the node (Lee and Anderson, 2008). These two features of apico-basal polarity were disrupted in FN1-null mutants (Fig. 3B,B',D). Remarkably, primary cilia marked by the expression of Arl13B were found both at apical and basal surfaces of nodal cells in FN1-null mutants (Fig. 3B', arrows). Future experiments utilizing additional cell polarity markers and earlier time points during nodal morphogenesis are necessary to further confirm the polarity status of nodal cells in the mutants and to determine whether FN1 regulates the establishment or the maintenance of nodal cell polarity. Upon examination of integrin $\alpha 5$ -null nodes, we found ectopical distribution of F-actin in one out of three mutant embryos (data not shown), suggesting that additional FN1-binding integrins regulate apico-basal polarity of the nodal cells.

Integrin $\alpha 5\beta 1$ and fibronectin are required to position the node and notochord along the plane of mirror symmetry in developing mouse embryos

At E7.5–E8.0, wild-type embryos appear bilaterally symmetrical and have no external, gross morphological features that

Table 1. Summary of node shapes seen with SEM

Genotype	Node shape		
	Narrow/disrupted	Narrow end pointing toward the posterior	Narrow end pointing toward the anterior
Control (wt or het)	0	0	13
Integrin $\alpha 5$ -null	2	6	2
Fibronectin-null	8	5	0

SEM-scanning electron microscopy; wt-wild type; het: FN^{+/-} or integrin $\alpha 5$ ^{+/-}.

distinguish the left side from the right. The primitive streak and the node are bilaterally symmetrical and lie along the bilateral plane of symmetry. Cells of the notochord arise from the node (Yamanaka et al., 2007), and the narrow part of the node and the notochordal plate align along the plane of bilateral symmetry in wild-type embryos, suggesting that the shape of the node and the positioning of the narrow part of the node along the midline could be important for the placement of the narrow strip of notochordal cells along the embryonic plane of bilateral symmetry.

In order to observe the shape and placement of the node and the notochord in more detail, we stained embryos to detect expression of the *Shh* growth factor and the *T* transcription factor in the node and the notochord using whole mount in situ hybridization (ISH). In accord with our SEM studies (Fig. 1), the expression of *Shh* and *T* in the node collectively demonstrated that a large proportion of integrin $\alpha 5$ -null (n=7 out of 9) and FN1-null embryos (n=9 out of 19) had inverted nodes with the wide side of the node oriented toward the embryonic anterior (Figs 4, 5). Expression of *Shh* marked inverted nodes in 4 out of 5 integrin $\alpha 5$ -null embryos (Fig. 4) and expression of *T* demonstrated node inversion in 3 out of 4

integrin $\alpha 5$ -null embryos (Fig. 5C,D). In addition, expression of *FoxA2* indicated inverted nodes in all of the four examined integrin $\alpha 5$ -null embryos (Fig. 4F,G). Expression of *Shh* showed that 4 out of 12 nodes in FN1-null mutants were inverted (Fig. 4D), and expression of *T* demonstrated the presence of inverted nodes in 5 out of 7 FN1-nulls (Fig. 5F).

Our ISH and SEM experiments also demonstrated that the notochords in integrin $\alpha 5$ -null and FN1-null mutants formed aberrantly, and that the proper positioning and shape of the notochord are correlated with the shape of the node (Figs 4–6). In controls, notochordal cells were arrayed in a narrow line contiguous with the narrow portion of the node (Fig. 4A,F, Fig. 5A, Fig. 6A,A'), as though the narrowing of the node focused the position of notochordal cells along the midline. Accordingly, in those integrin

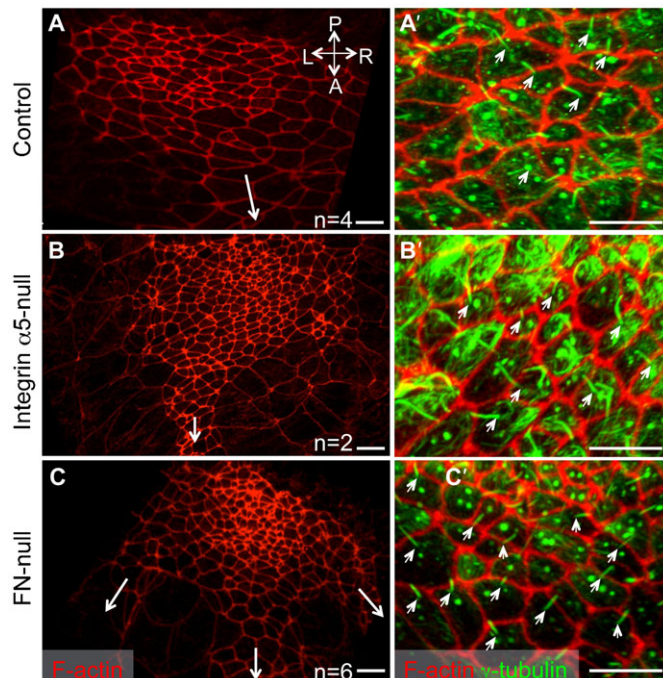


Fig. 2. Anterior–posterior polarity of the nodal cells does not depend on integrin $\alpha 5\beta 1$ or FN1. Red: F-actin is detected using rhodamine-phalloidin; Green: acetylated (stable) α -tubulin. Positions of the notochords are marked by long arrows in panels A–C. Note three notochords originate from the middle and the two corners of the inverted node in this FN1-null embryo (arrows, C). Protruding cilia (small arrows, A'–C') are located at the posterior of each nodal cell. Axes are marked as in Fig. 1. All embryos were collected in the morning of E8.0. Scale bars: 10 μ m.

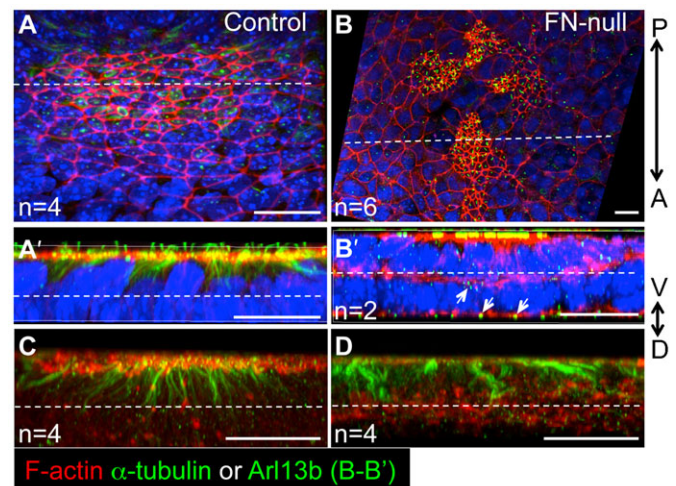


Fig. 3. FN1 is required for the apico-basal polarity of the nodal cells. Transverse optical sections through the node (dotted lines in panels A and B indicate the plane of optical section shown in panels A' and B'). 3D reconstructions of views through the transverse edge of each section are presented. In each view (A',B'), multiple layers of cells posterior to the dotted lines in panels A and B are collapsed into one plane. F-actin (red) and acetylated α -tubulin and cilia (green) are only present at the apical (ventral) surface of the ventral-most nodal cells in controls (A',C). The dotted lines in panels A',B',C and D mark 10 μ m from the apical surface of the ventral node, and indicate about one cell layer. In FN1-null mutants (B',D), F-actin is distributed apically and basally and its presence is not restricted to the ventral cell surface. In FN1-null embryos, cilia, visualized using anti-Arl13b antibody (B') or anti-acetylated α -tubulin antibody (D), are present on ventral and internal cells of the node, and point apically and basally (B', arrows). (C,D) Embryos were stained to detect F-actin and acetylated α -tubulin. The views are 3D reconstructions through multiple cell layers of the nodes as described in panels A' and B'. The absence of nuclear stain allows visualizing the distribution of F-actin and α -tubulin through the nodes, internally. F-actin is localized apically in all cells of the node, while in mutants F-actin is re-distributed from the apical surface throughout the cells in the mutants nodes. Axes are as in Fig. 2. All embryos were collected in the morning of E8.0. Scale bars: 20 μ m.

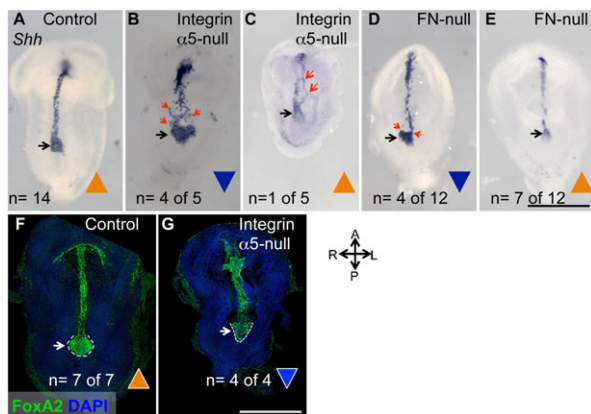


Fig. 4. Integrin $\alpha 5$ and FN1 are required for the proper geometry of the node and the morphogenesis of the notochord as shown by the expression of *Shh* and *FoxA2*. (A–E) Whole-mount in situ hybridizations using a mouse *Shh* anti-sense RNA probe. In controls (A) the narrow tip of the node points anteriorly and is contiguous with the narrow strip of the notochord. In mutants with inverted nodes, notochordal cells emanate from both corners of the node (B), giving rise to a dispersed notochord (red arrows). (C) Notochordal cells in this mutant “follow” the bends of the neural tube (red arrows). (D) When most notochordal cells emanate from one corner or (E) from a narrow tip of the node (black arrows), the notochords are narrow in the mutants. Triangles indicate properly oriented (orange) or inverted nodes (blue). (F, G) *FoxA2* protein expression (green). 3D reconstructions of immunofluorescence confocal images of control (F) and integrin $\alpha 5$ -null embryos (G), demonstrating inverted nodes in the mutants. Embryos were collected at E8.0. Littermate control embryos ranged from 2–5 somites. Mutants do not develop somites. Axes are labeled. Scale bars: 500 μ m.

$\alpha 5$ -null or FN1-null mutants, in which the narrow ends of the nodes were oriented toward the anterior, the notochords formed a narrow line coincident with the embryonic bilateral plane of symmetry (Fig. 4E, Fig. 5B,E). However, this was not the case in mutants with inverted nodes, and we observed two scenarios in mutants with inverted nodes: 1) the notochordal cells originated from the entire anterior-facing, wide side of the node, giving rise to wide notochords (Fig. 4B, Fig. 5C,F); or 2) the notochordal cells originated mainly from one of the corners of the node, giving rise to narrow notochords positioned to the left side or the right of the presumptive bilateral plane of symmetry (Fig. 4D, Fig. 6B,B'). In some cases, notochordal cells originating from both corners of the inverted node (Fig. 4D, Fig. 5D) or from the wide face of the inverted node (Fig. 4B) gave rise to initially wide regions of the notochord that became “re-focused” along the midline in a more anterior position, suggesting the presence of a trophic factor(s) located along the embryonic midline. This factor(s) may be produced by the neural ectoderm, since we observed notochordal cells following the bends of the neural tube in one of the mutants (Fig. 4C, red arrows). SEM further demonstrated the striking “off-midline” positioning of the nodes and notochords in FN1-null mutants (Fig. 6).

One notable feature of our findings is variability in the geometry and position of the nodes and notochords in the mutants. The genetic background was not a factor modulating the variability of the observed phenotypes, since all embryos analyzed were obtained from mutant mice crossed into C57BL/6J background for over 10 generations, and then intercrossed for over 10 years. The embryonic stage was also not a factor, since mutant embryos with different node geometries contained well-developed anterior intestinal portals (e.g. Fig. 6B,D,E), indicating

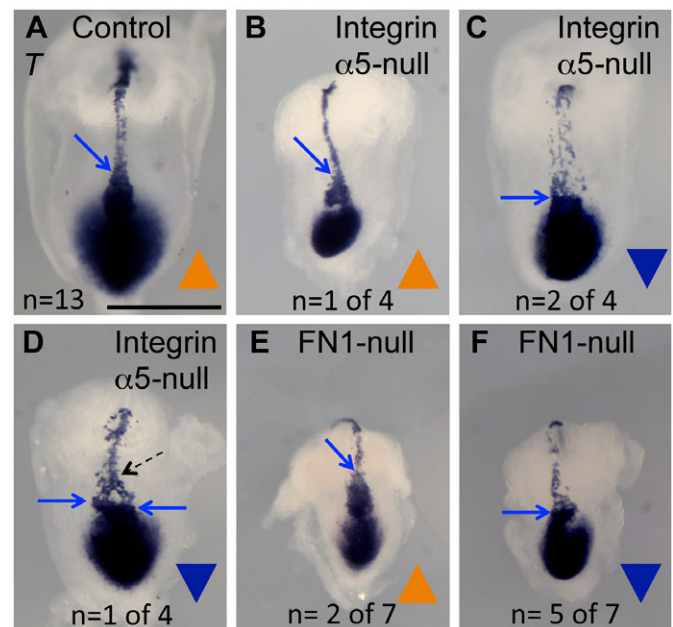


Fig. 5. Integrin $\alpha 5$ and FN1 regulate the geometry of the node and the development of the notochord as shown by the expression of *T*. Whole-mount in situ hybridizations using an anti-sense *T* RNA probe. (A) Control. (B–D) Integrin $\alpha 5$ -null mutants. (E, F) FN1-null mutants. In those mutants in which the node is oriented with the pointy end toward the anterior (blue arrows, B, E) and along the midline, the notochords are positioned at the embryonic midline and are narrow (B). In mutants with inverted nodes, notochordal cells emanate from the entire wide face of the node (blue arrow), giving rise to the wide notochord (C, F), or from two corners of the node (D). (D) Notochordal cells are re-focused along the midline anteriorly (dotted arrow). Embryos were collected at E8.0. Littermate control embryos ranged from 2–5 somites. Mutants do not develop somites. Axes are as in Fig. 4. Scale bar: 500 μ m.

that mutants have at least reached the late headfold stage (Downs and Davies, 1993). At this stage, the nodes and notochords in all controls are well-formed. Another indicator of embryonic age at early time points of development is the length of nodal cilia (Lee and Anderson, 2008). However, we found that the lengths of nodal cilia in mutants did not differ from similarly-staged controls (Pulina et al., 2011). Therefore, the variability in the geometry and position of the nodes and notochords implies the loss of a critical regulatory mechanism in FN1-null and integrin $\alpha 5$ -null mutants, leading to stochastic organization of the node and “off-midline” placement of the notochord.

Relationship between the expression of integrin $\alpha 5$ and FN1 matrix assembly

The form, shape and stereotypical features of the E8.0 embryos, including somites and the midline structures, are easily visualized following whole mount staining of embryos using rhodamine-conjugated phalloidin (Fig. 7A,B) or FN1 (Fig. 7C). However, these structures are no longer recognizable following the same staining of integrin $\alpha 5$ -null embryos (Fig. 7E–G). Absence of recognizable embryonic patterns in integrin $\alpha 5$ -null mutants stained with rhodamine-conjugated phalloidin indicates aberrant distribution of F-actin bundles in mutant cells, consistent with a notion that cell polarity is disrupted in entire integrin $\alpha 5$ -null embryos. Interestingly, FN1 protein distribution is disorganized in integrin $\alpha 5$ -null mutants as well. In control embryos, FN1

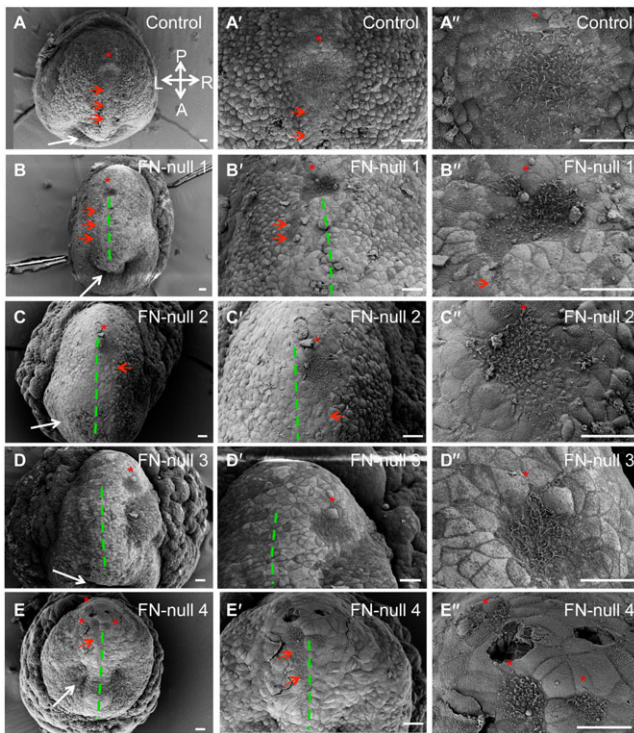


Fig. 6. FN1 is required for midline positioning of the node and notochord demonstrated by scanning electron microscopy. Ventral surfaces of control (A–A'') or mutant (B–E'') embryos are shown. Dashed lines outline approximate, perceived bilateral planes of symmetry in the mutants. Red arrows point to notochords. Red stars mark nodes. Panels marked by ' and '' are magnified views of panels A–E. (A–A'') In controls, the position of the node and the notochord coincides with the bilateral plane of symmetry. (B–B'') In mutant, notochord emanates from the left corner of the node and is positioned to the left of the bilateral plane of symmetry. (C–C'') The mutant node and notochord are positioned to the right of the bilateral plane of symmetry. (D–D'') The node (red star) is positioned far to the right of the bilateral plane of symmetry and there is no identifiable notochord. (E–E'') Portions of disrupted node are located to either side of the approximate plane of bilateral symmetry. Note the presence of endodermal invagination in this mutant (white arrow) as well as in the control and all other mutants shown, indicating that mutants are at least at the late headfold stage of development. Embryos were collected at E8.0 and ranged from the late headfold stage up to 3 somites (controls). Mutants do not develop somites. Axes are as in Fig. 1. Scale bars: 30 μ m.

distinctly localizes around the node and the notochord (Fig. 7C,D). This localization is mediated by integrin $\alpha 5 \beta 1$ and is disrupted in its absence (Fig. 7G,H).

Integrin heterodimers containing αv subunits are dispensable for the establishment of the left–right axis in the mouse

In the absence of integrin $\alpha 5 \beta 1$, cell–ECM interactions could be potentially mediated by αv -containing integrin heterodimers (Yang and Hynes, 1996; van der Flier et al., 2010). Studies in zebrafish indicated that additional FN1 receptors containing integrin αv subunits, are important for the formation of the Kupffer's vesicle, the organ of asymmetry in zebrafish, and for the establishment of the left–right axis of asymmetry in fish (Ablooglu et al., 2010). In order to test the role of integrin αv in the establishment of the left–right axis, we analyzed cardiac looping in mouse embryos lacking integrin αv (Bader et al., 1998). The bending of the heart tube to the right is the first

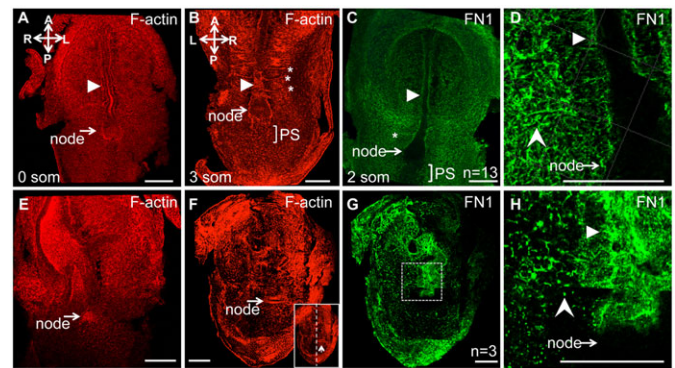


Fig. 7. Integrin $\alpha 5$ plays a major role in assembly of FN1 matrix, localization of F-actin, and organization of embryonic tissues. Whole mount immunofluorescence staining of E8.0 embryos to detect F-actin (red) and FN1 (green). (A–D) Controls. (E–H) Integrin $\alpha 5$ -null mutants. In controls, F-actin and FN1, outline the node, notochord (arrowhead) and somites (stars). In mutants, these structures are not distinguishable. Note that in the mutant (F,G) the node and the notochord are positioned to the left of the bilateral plane of symmetry. FN1 matrix is assembled as long squiggly fibrils in controls (C,D). In integrin $\alpha 5$ -null mutants, FN1 protein is mostly present as dots (notched arrowhead, H). Filled arrowheads point at notochord, rectangle in panel G is expanded in panel H. Control and mutant embryos were isolated at E8.0. Staining for FN1 was performed on 13 control embryos ranging from 0–4 somites, and in none of the cases, FN was found in dots (notched arrowhead, H) as observed in integrin $\alpha 5$ -null mutants.

morphological manifestation of the left–right asymmetry in the embryo (Ramsdell, 2005). Our analyses indicated that cardiac looping occurred correctly in integrin αv -null mutants, $n=12$ (Fig. 8), demonstrating that αv -containing integrins are not required for left–right axis formation or for its maintenance. Moreover, we observed normal, rightward cardiac looping in all compound integrin $\alpha v^{-/-}$; $\alpha 5^{-/+}$ mutant embryos ($n=6$), indicating that a single copy of integrin $\alpha 5$ is sufficient for the normal formation of the node and the notochord, for the midline barrier function, and for the development of the left–right axis. Normal heart looping strongly implies that the formation of the node and the notochord are not affected in integrin αv -null or $\alpha v^{-/-}$; $\alpha 5^{-/+}$ mutant embryos. Our studies indicate that unlike in zebrafish, αv -containing integrin heterodimers are not essential for the left–right axis development in mammals, and that among FN1 receptors, integrin $\alpha 5 \beta 1$ plays an essential, major role in morphogenesis of the node and notochord, and in the establishment of the left–right axis of asymmetry during embryogenesis (Pulina et al., 2011).

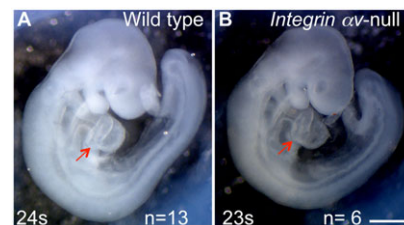


Fig. 8. Integrin αv is not required for the early left–right patterning. (A) Normal, right-sided heart looping. Control (A) and integrin αv -null (B) mouse embryos at E9.5. Red arrows point at the right ventricle in control and mutant. Magnification is the same in both panels. Scale bar: 500 μ m.

Conclusions

Our work highlights complex mechanisms involved in the morphogenesis of the midline structures, the node and the notochord. And while convergent extension is an important mechanism regulating notochord morphogenesis (Yamanaka et al., 2007), our studies indicate that additional mechanisms are at play, namely, that the geometry and the position of the node in the developing embryo determine the midline positioning and the width of the notochord. Importantly, our studies indicate that the node and the notochord do not develop along the bilateral plane of embryonic symmetry by default. Instead, there exist active mechanisms regulating the midline placement of these structures. These mechanisms critically depend on the engagement of cellular integrin $\alpha 5 \beta 1$ with extracellular matrix protein FN1.

Our studies demonstrate that absence of integrin $\alpha 5$ or FN1 proteins leads to similar defects in formation of the midline structures, suggesting that integrin $\alpha 5 \beta 1$ transduces signaling by FN1. However, a number of other integrins bind FN1 in vitro, and integrins containing αv chain are known to compensate for the absence of integrin $\alpha 5 \beta 1$ in vitro during FN1 fibril assembly (Yang and Hynes, 1996; van der Flier et al., 2010). In vivo, FN1-binding integrin heterodimers containing $\alpha 4$ or $\alpha 3$ chains do not appear to cooperate with integrin $\alpha 5 \beta 1$ during early embryogenesis (Yang et al., 1999). αv -containing integrins cooperate with integrin $\alpha 5 \beta 1$ in early mouse embryogenesis to facilitate gastrulation as well as in midgestation, during remodeling of the pharyngeal arch arteries (Yang et al., 1999; van der Flier et al., 2010). In zebrafish, αv -containing integrins were shown to be important for the establishment of the left–right asymmetry by regulating morphogenesis of the Kupffer’s vesicle. However, we did not find defects in establishment or maintenance of the left–right asymmetry in mouse embryos with global deletion of integrin αv . Moreover, decreasing the dosage of integrin $\alpha 5 \beta 1$ did not induce left–right defects in integrin αv -null mutants. These studies suggest that in mice, integrin $\alpha 5 \beta 1$ is the main FN1-binding integrin heterodimer transducing FN1 signals during morphogenesis of the node and the notochord and regulating the establishment of the left–right axis. Consistent with this, we found that FN1 matrix was not well-assembled in integrin $\alpha 5$ -null embryos. Our experiments suggest that assembly of FN1-containing ECM mediated by integrin $\alpha 5 \beta 1$ and FN1-integrin $\alpha 5 \beta 1$ signaling are important for polarized distribution of actin stress fibers, apico-basal cell polarity and morphogenesis of the node and the notochord. Disrupted localization of F-actin in integrin $\alpha 5$ mutants implies defective tissue tension and/or aberrant distribution of mechanical forces within the developing mutant embryos (Schwartz, 2010). As anisotropic tissue tension is important for gastrulation (Brunet et al., 2013) and for the development of proper geometrical cellular patterns during embryogenesis (Guillot and Lecuit, 2013; LeGoff et al., 2013), we hypothesize that the binding of cellular integrin $\alpha 5 \beta 1$ to FN1 is important for generating and/or maintaining mechanical forces within the developing embryo, facilitating correct packing of the cells within the node and enabling the placement of the node and the notochord along the bilateral plane of symmetry.

Acknowledgements

We thank Nina Lampen at the Electron Microscopy Core Facility at the Memorial Sloan–Kettering Cancer Center for help with SEM and Shivaprasad Bhuvanendran in the Bio-Imaging Resource Center at the Rockefeller University for help with confocal imaging. We thank Drs Takashi Mikawa, Ann Foley, Nathan Astrof, Karl Degenhardt and Alvin Chin for advice and careful reading of the

manuscript, and we thank Rachel DeRita and Sonam Dhiman for careful editing of the manuscript. We are grateful to Dr Kathryn Anderson for Arl13b antibody and the plasmids used for preparation of in situ hybridization probes.

Competing interests

The authors have no competing interests to declare.

Author contributions

S.A. conceived and designed the project, performed imaging, data analyses, prepared the figures and wrote the paper. M.P. and D.L. carried out the research.

Funding

This work was supported by the National Institutes of Health NHLBI [grant number HL103920], American Heart Association scientist development grant [0835556D], American Heart Association Innovative Research Grant [12IRG9130012] and the W. W. Smith Charitable Trust (to S.A.).

References

- Ablooglu, A. J., Tkachenko, E., Kang, J. and Shattil, S. J. (2010). Integrin $\alpha v \beta 3$ is necessary for gastrulation movements that regulate vertebrate body asymmetry. *Development* **137**, 3449–3458.
- Almog, B., Leibovitch, L. and Achiron, R. (2001). Split notochord syndrome – prenatal ultrasonographic diagnosis. *Prenat. Diagn.* **21**, 1159–1162.
- Astrof, S., Kirby, A., Lindblad-Toh, K., Daly, M. and Hynes, R. O. (2007). Heart development in fibronectin-null mice is governed by a genetic modifier on chromosome four. *Mech. Dev.* **124**, 551–558.
- Bader, B. L., Rayburn, H., Crowley, D. and Hynes, R. O. (1998). Extensive vasculogenesis, angiogenesis, and organogenesis precede lethality in mice lacking all alpha v integrins. *Cell* **95**, 507–519.
- Bressan, M., Davis, P., Timmer, J., Herzlinger, D. and Mikawa, T. (2009). Notochord-derived BMP antagonists inhibit endothelial cell generation and network formation. *Dev. Biol.* **326**, 101–111.
- Brunet, T., Bouclet, A., Ahmadi, P., Mitrossilis, D., Driquez, B., Brunet, A. C., Henry, L., Serman, F., Béalle, G., Ménager, C. et al. (2013). Evolutionary conservation of early mesoderm specification by mechanotransduction in Bilateria. *Nat. Commun.* **4**, 2821.
- Burdine, R. D. and Schier, A. F. (2000). Conserved and divergent mechanisms in left-right axis formation. *Genes Dev.* **14**, 763–776.
- Cartwright, J. H., Piro, O. and Tuval, I. (2004). Fluid-dynamical basis of the embryonic development of left-right asymmetry in vertebrates. *Proc. Natl. Acad. Sci. USA* **101**, 7234–7239.
- Caspary, T., Larkins, C. E. and Anderson, K. V. (2007). The graded response to Sonic Hedgehog depends on cilia architecture. *Dev. Cell* **12**, 767–778.
- Davidson, B. P., Kinder, S. J., Steiner, K., Schoenwolf, G. C. and Tam, P. P. (1999). Impact of node ablation on the morphogenesis of the body axis and the lateral asymmetry of the mouse embryo during early organogenesis. *Dev. Biol.* **211**, 11–26.
- Downs, K. M. and Davies, T. (1993). Staging of gastrulating mouse embryos by morphological landmarks in the dissecting microscope. *Development* **118**, 1255–1266.
- Fouquet, B., Weinstein, B. M., Serluca, F. C. and Fishman, M. C. (1997). Vessel patterning in the embryo of the zebrafish: guidance by notochord. *Dev. Biol.* **183**, 37–48.
- Geiger, B. and Yamada, K. M. (2011). Molecular architecture and function of matrix adhesions. *Cold Spring Harb. Perspect. Biol.* **3**, a005033.
- George, E. L. and Hynes, R. O. (1994). Gene targeting and generation of mutant mice for studies of cell–extracellular matrix interactions. *Methods Enzymol.* **245**, 386–420.
- George, E. L., Georges-Labouesse, E. N., Patel-King, R. S., Rayburn, H. and Hynes, R. O. (1993). Defects in mesoderm, neural tube and vascular development in mouse embryos lacking fibronectin. *Development* **119**, 1079–1091.
- George, E. L., Baldwin, H. S. and Hynes, R. O. (1997). Fibronectins are essential for heart and blood vessel morphogenesis but are dispensable for initial specification of precursor cells. *Blood* **90**, 3073–3081.
- Goh, K. L., Yang, J. T. and Hynes, R. O. (1997). Mesodermal defects and cranial neural crest apoptosis in alpha5 integrin-null embryos. *Development* **124**, 4309–4319.
- Goldstein, A. M. and Fishman, M. C. (1998). Notochord regulates cardiac lineage in zebrafish embryos. *Dev. Biol.* **201**, 247–252.
- Guillot, C. and Lecuit, T. (2013). Mechanics of epithelial tissue homeostasis and morphogenesis. *Science* **340**, 1185–1189.
- Huttenlocher, A. and Horwitz, A. R. (2011). Integrins in cell migration. *Cold Spring Harb. Perspect. Biol.* **3**, a005074.
- Hynes, R. O. (2002). Integrins: bidirectional, allosteric signaling machines. *Cell* **110**, 673–687.
- Hynes, R. O. (2009). The extracellular matrix: not just pretty fibrils. *Science* **326**, 1216–1219.
- Hynes, R. O. (2012). The evolution of metazoan extracellular matrix. *J. Cell Biol.* **196**, 671–679.
- Kwon, G. S., Viotti, M. and Hadjantonakis, A. K. (2008). The endoderm of the mouse embryo arises by dynamic widespread intercalation of embryonic and extraembryonic lineages. *Dev. Cell* **15**, 509–520.

- Lee, J. D. and Anderson, K. V. (2008). Morphogenesis of the node and notochord: the cellular basis for the establishment and maintenance of left-right asymmetry in the mouse. *Dev. Dyn.* **237**, 3464–3476.
- Lee, J. D., Migeotte, I. and Anderson, K. V. (2010). Left-right patterning in the mouse requires Epb4.115-dependent morphogenesis of the node and midline. *Dev. Biol.* **346**, 237–246.
- LeGoff, L., Rouault, H. and Lecuit, T. (2013). A global pattern of mechanical stress polarizes cell divisions and cell shape in the growing *Drosophila* wing disc. *Development* **140**, 4051–4059.
- Meno, C., Shimono, A., Saijoh, Y., Yashiro, K., Mochida, K., Ohishi, S., Noji, S., Kondoh, H. and Hamada, H. (1998). *lefty-1* is required for left-right determination as a regulator of *lefty-2* and nodal. *Cell* **94**, 287–297.
- Mikawa, T., Poh, A. M., Kelly, K. A., Ishii, Y. and Reese, D. E. (2004). Induction and patterning of the primitive streak, an organizing center of gastrulation in the amniote. *Dev. Dyn.* **229**, 422–432.
- Miner, J. H. and Yurchenco, P. D. (2004). Laminin functions in tissue morphogenesis. *Annu. Rev. Cell Dev. Biol.* **20**, 255–284.
- Mittal, A., Pulina, M., Hou, S. Y. and Astrof, S. (2010). Fibronectin and integrin alpha 5 play essential roles in the development of the cardiac neural crest. *Mech. Dev.* **127**, 472–484.
- Mittal, A., Pulina, M., Hou, S. Y. and Astrof, S. (2013). Fibronectin and integrin alpha 5 play requisite roles in cardiac morphogenesis. *Dev. Biol.* **381**, 73–82.
- Pulina, M. V., Hou, S. Y., Mittal, A., Julich, D., Whittaker, C. A., Holley, S. A., Hynes, R. O. and Astrof, S. (2011). Essential roles of fibronectin in the development of the left-right embryonic body plan. *Dev. Biol.* **354**, 208–220.
- Ramsdell, A. F. (2005). Left-right asymmetry and congenital cardiac defects: getting to the heart of the matter in vertebrate left-right axis determination. *Dev. Biol.* **288**, 1–20.
- Schwartz, M. A. (2010). Integrins and extracellular matrix in mechanotransduction. *Cold Spring Harb. Perspect. Biol.* **2**, a005066.
- Shiratori, H. and Hamada, H. (2006). The left-right axis in the mouse: from origin to morphology. *Development* **133**, 2095–2104.
- Stemple, D. L. (2005). Structure and function of the notochord: an essential organ for chordate development. *Development* **132**, 2503–2512.
- Sumoy, L., Keasey, J. B., Dittman, T. D. and Kimelman, D. (1997). A role for notochord in axial vascular development revealed by analysis of phenotype and the expression of VEGF-2 in zebrafish *flh* and *ntl* mutant embryos. *Mech. Dev.* **63**, 15–27.
- Tabin, C. J. (2006). The key to left-right asymmetry. *Cell* **127**, 27–32.
- Takahashi, S., Leiss, M., Moser, M., Ohashi, T., Kitao, T., Heckmann, D., Pfeifer, A., Kessler, H., Takagi, J., Erickson, H. P. et al. (2007). The RGD motif in fibronectin is essential for development but dispensable for fibril assembly. *J. Cell Biol.* **178**, 167–178.
- Turgut, M., Cullu, E. and Ulucan, H. (2006). Incomplete Currarino triad as an embryological variant. Case report and review of the literature. *J. Neurosurg.* **105 Suppl.**, 504–507.
- van der Flier, A., Badu-Nkansah, K., Whittaker, C. A., Crowley, D., Bronson, R. T., Lacy-Hulbert, A. and Hynes, R. O. (2010). Endothelial alpha5 and alpha v integrins cooperate in remodeling of the vasculature during development. *Development* **137**, 2439–2449.
- Villegas, S. N., Barrios-Llerena, M. E., Pulina, M., Hadjantonakis, A. K., Le Bihan, T., Astrof, S. and Brickman, J. M. (2013). PI3K/Akt1 signalling specifies foregut precursors by generating regionalized extra-cellular matrix. *eLife* **2**, e00806.
- Wei, Y. and Mikawa, T. (2000). Formation of the avian primitive streak from spatially restricted blastoderm: evidence for polarized cell division in the elongating streak. *Development* **127**, 87–96.
- Whittaker, C. A. and Hynes, R. O. (2002). Distribution and evolution of von Willebrand/integrin A domains: widely dispersed domains with roles in cell adhesion and elsewhere. *Mol. Biol. Cell* **13**, 3369–3387.
- Whittaker, C. A., Bergeron, K. F., Whittle, J., Brandhorst, B. P., Burke, R. D. and Hynes, R. O. (2006). The echinoderm adhesome. *Dev. Biol.* **300**, 252–266.
- Wickström, S. A., Radovanac, K. and Fässler, R. (2011). Genetic analyses of integrin signaling. *Cold Spring Harb. Perspect. Biol.* **3**, a005116.
- Yamanaka, Y., Tamplin, O. J., Beckers, A., Gossler, A. and Rossant, J. (2007). Live imaging and genetic analysis of mouse notochord formation reveals regional morphogenetic mechanisms. *Dev. Cell* **13**, 884–896.
- Yang, J. T. and Hynes, R. O. (1996). Fibronectin receptor functions in embryonic cells deficient in alpha 5 beta 1 integrin can be replaced by alpha V integrins. *Mol. Biol. Cell* **7**, 1737–1748.
- Yang, J. T., Rayburn, H. and Hynes, R. O. (1993). Embryonic mesodermal defects in alpha 5 integrin-deficient mice. *Development* **119**, 1093–1105.
- Yang, J. T., Bader, B. L., Kreidberg, J. A., Ullman-Culleré, M., Trevithick, J. E. and Hynes, R. O. (1999). Overlapping and independent functions of fibronectin receptor integrins in early mesodermal development. *Dev. Biol.* **215**, 264–277.
- Yashiro, K., Shiratori, H. and Hamada, H. (2007). Haemodynamics determined by a genetic programme govern asymmetric development of the aortic arch. *Nature* **450**, 285–288.
- Yurchenco, P. D. (2011). Basement membranes: cell scaffoldings and signaling platforms. *Cold Spring Harb. Perspect. Biol.* **3**, a004911.