

# Femtosecond lasers for laser in situ keratomileusis: a systematic review and meta-analysis

Anne Huhtala<sup>1</sup>  
Juhani Pietilä<sup>1,2</sup>  
Petri Mäkinen<sup>1,2</sup>  
Hannu Uusitalo<sup>1-3</sup>

<sup>1</sup>Silmäasema Eye Hospital, <sup>2</sup>SILK, Department of Ophthalmology, School of Medicine, University of Tampere, <sup>3</sup>TAUH Eye Center, Tampere University Hospital, Tampere, Finland

**Purpose:** The aim of this study was to review and meta-analyze whether there are differences between reported femtosecond (FS) lasers for laser-assisted in situ keratomileusis (LASIK) in terms of efficacy, predictability, and safety as primary outcomes and corneal flap thickness measurements and pre- and postoperative complications as secondary outcomes.

**Methods:** A comprehensive literature search of PubMed, Science Direct, Scopus, and Cochrane CENTRAL Trials Library databases was conducted to identify the relevant prospective randomized controlled trials of FS lasers for LASIK. Thirty-one articles describing a total of 5,404 eyes were included.

**Results:** Based on efficacy, IntraLase FS 10 and 30 kHz gave the best results. Based on predictability and safety, there were no differences between various FS lasers. FEMTO LDV and IntraLase FS 60 kHz produced the most accurate flap thicknesses. IntraLase and Wavelight SF200 had the fewest intraoperative complications. IntraLase, Visumax, and Wavelight FS200 had the most seldom postoperative complications.

**Conclusion:** There were dissimilarities between different FS lasers based on efficacy and intraoperative and postoperative complications. All FS lasers were predictable and safe for making corneal flaps in LASIK.

**Keywords:** femtosecond laser, laser in situ keratomileusis, LASIK, meta-analysis

## Introduction

Laser-assisted in situ keratomileusis (LASIK) is the most commonly used refractive surgery technique for the correction of myopia, hyperopia, and astigmatism.<sup>1,2</sup> The first phase of LASIK, the creation of a corneal flap, is the most critical step of LASIK, and it affects the visual outcome of the whole procedure. The flap creation is followed by excimer laser ablation of the exposed stroma after which the flap is repositioned. The technological evolution of flap creation has emerged from mechanical manually guided microkeratomes to automated microkeratomes and single-use microkeratomes, and most recently to femtosecond (FS) laser technology.<sup>3,4</sup> In the FS laser technology, FS laser photodisrupts tissue at a preset depth and produces microcavitation bubbles consisting of water and carbon dioxide.<sup>5</sup> The expansion of these bubbles separates the corneal lamellae and forms a resection plane.<sup>5</sup>

There are several FS lasers on the market. IntraLase, now produced by Abbott Medical Optics Inc. (Santa Ana, CA, USA), was the first FS laser keratome introduced in the USA in 2001.<sup>6</sup> Technolas Femtosecond Workstation, formerly known as Femtec, by Technolas Perfect Vision (Munich, Germany), was introduced immediately after the market launch of IntraLase.<sup>7</sup> FEMTO LDV by Ziemer Ophthalmic Systems (Port, Switzerland) was introduced in the late 2005, and Visumax by Carl Zeiss Meditec AG (Jena, Germany) in the fall 2006.<sup>7</sup> Wavelight FS200 by Alcon Laboratories, Inc. (Fort Worth, TX, USA)

Correspondence: Anne Huhtala  
Silmäasema Eye Hospital Tampere,  
Hämeenkatu 6, FIN-33100 Tampere,  
Finland  
Tel +358 50 304 0458  
Email [annemhuhtala@gmail.com](mailto:annemhuhtala@gmail.com)



received the US Food and Drug Administration clearance for marketing in the USA in the late 2010.<sup>8</sup>

FS laser technology has been increasingly used in LASIK. According to a poll conducted in 2006, >30% of the LASIK flaps were created by FS laser,<sup>9</sup> while according to a MarketScope's second-quarter survey for the year 2010, ~70% of the LASIK flaps were created using an FS laser.<sup>10</sup> As the published meta-analysis studies for FS lasers for LASIK have been concentrated only on IntraLase,<sup>10,11</sup> the current study was undertaken to review and meta-analyze whether there are differences between reported FS lasers for LASIK in terms of efficacy, predictability, and safety as primary outcomes and corneal flap thickness measurements (difference from the target flap thickness and combined standard deviation [SD]) and complications as secondary outcomes.

## Materials and methods

### Literature search strategy

Comprehensive literature searches of PubMed and Science Direct databases were first conducted on December 2, 2013. The literature search of Scopus database was conducted on March 10, 2014, and another literature search of the Cochrane CENTRAL Trials database on October 4, 2014. After the review process, all the databases were rechecked on December 28, 2015, for newer publications. The literature searches were conducted by using the following terms: "femtosecond laser lasik clinical controlled randomized" and "femtosecond laser lasik flap thickness controlled randomized" without date limitations. Language was restricted to English. Citations initially selected were first retrieved as titles by one reviewer (AH). After the initial screening, potentially relevant articles were retrieved as abstracts and screened by all authors. After this step, relevant articles were retrieved as complete papers and assessed for compliance.

### Quality scoring

The quality of each study was assessed using the Jadad et al<sup>12</sup> score with a scale of 0–5. Each study was assessed by three main aspects of study design: randomizing, masking, and participant withdrawals/dropouts. One point was given for the presence of randomizing, masking, and participant withdrawals/dropouts. If randomizing and blinding were appropriate, one additional point was added to each. Studies scoring <3 points were considered to be of low quality.

### Outcome measures

The primary outcome measures were efficacy, predictability, and safety. The efficacy measure was the proportion of eyes

achieving an uncorrected distance visual acuity (UDVA), an UDVA of 20/20 or better. The predictability measure was refraction within  $\pm 0.5$  diopters (D) of mean target spherical equivalent refraction. The safety measure was a loss of  $\geq 2$  Snellen lines of CDVA, a corrected distance visual acuity. Secondary outcome measures were flap thickness measurements (mean flap thickness and flap predictability as SD), and intraoperative and postoperative complication rates. For primary outcome measures, hyperopic eyes were excluded from the analysis.

### Statistical methods

The data were pooled together for different FS lasers. Percentage values were calculated back to basic count values in order to make nonparametric analysis possible. Statistical significance for efficacy, predictability, safety, and intra- and postoperative complications was evaluated with the chi-square test. Corneal flap thickness measurements were also pooled together and analyzed with the one-way analysis of variance (ANOVA) (SigmaPlot; Systat Software Inc., San Jose, CA, USA). In this meta-analysis, which included several previously published studies,  $P$ -value <0.001 was considered significant.

## Results

### Results of the literature search

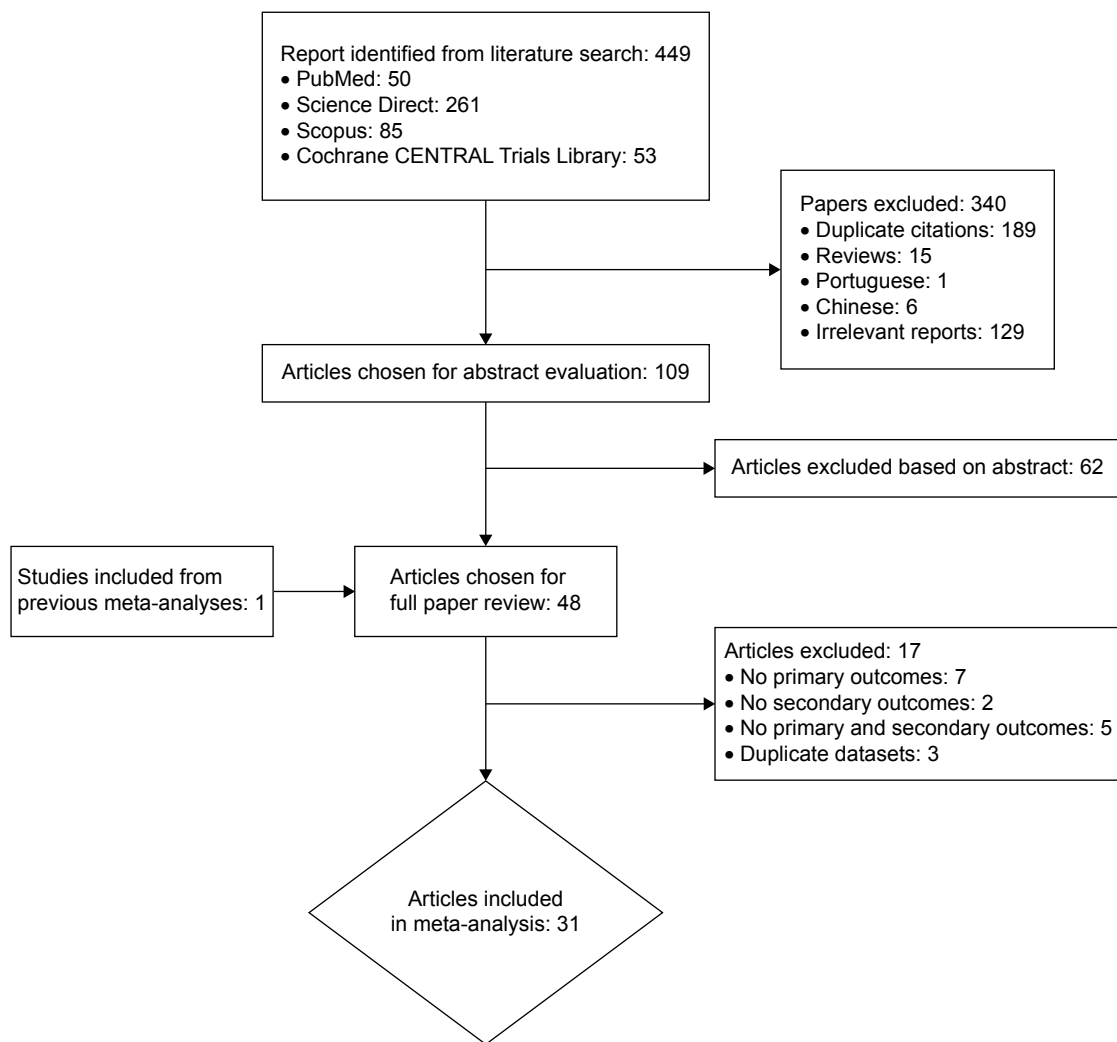
Figure 1 shows the flowchart of the studies from the initial literature search to the final inclusion. Based on the full paper review, 21 controlled randomized trials and ten prospective or retrospective nonrandomized studies were included in the meta-analysis.

### Primary outcome measures

Table 1 shows the main preoperative characteristics of the 31 studies describing a total of 5,404 eyes included in the meta-analysis. Studies written in bold (nine studies) have been included in the previously published meta-analysis studies<sup>10,11</sup> concerning FS laser for LASIK. Postoperative characteristics for primary and secondary outcomes are presented in Table 2.

### Efficacy

Among the different IntraLase types, the efficacy ranged from 85.1% (IntraLase FS 60 kHz, seven studies included<sup>13–19</sup>) to 100% (IntraLase FS 10<sup>20</sup> and 30 kHz,<sup>21</sup> Figure 2). For the most commonly reported IntraLase FS 60 kHz, the average efficacy was 85.1%. In one study, IntraLase FS 60 or 150 kHz<sup>22</sup> was used and its efficacy was 98.3%. For IntraLase 150 kHz,<sup>19,23–25</sup> the average



**Figure 1** Flowchart of study selection.

efficacy was 93.7%. For FEMTO LDV,<sup>26,27</sup> the average efficacy was 91.3%. For Visumax<sup>18,24,28</sup> and Wavelight FS200,<sup>29,30</sup> the average efficacy rates were 79.1% and 83.6%, respectively.

### Predictability

The average predictability for the different IntraLase types ranged from 91.0% (IntraLase FS 60 kHz<sup>14-19</sup>) to 95.9% (IntraLase FS 30 kHz;<sup>21,31</sup> Figure 3). FEMTO LDV<sup>26,27</sup> had the average predictability of 89.4%. For Visumax<sup>18,24</sup> and Wavelight FS200,<sup>29,30</sup> the average predictabilities were 87.1% and 90.5%, respectively.

### Safety

The average safety percentage was zero or very close to zero for all the studied FS laser types (Figure 4). For IntraLase FS 15<sup>32-36</sup> and 30 kHz,<sup>21,31,37</sup> the average safety was

0.4% and 0.7%, respectively. For IntraLase FS 60 kHz,<sup>13-18</sup> it was 0.2%. For Wavelight FS 200,<sup>29,30</sup> it was 0.5%.

## Secondary outcome measures

### Flap thickness measurements

The average difference from the target flap thickness for IntraLase FS 30<sup>31,37</sup> and 60 kHz<sup>13,14,16,38-40</sup> was +0.8 and +0.6  $\mu\text{m}$ , respectively (Figure 5). For IntraLase FS 15 kHz,<sup>33,34,41</sup> the average difference from the target flap thickness was much bigger, +6.7  $\mu\text{m}$ . For FEMTO LDV,<sup>26,40,42</sup> the average difference from the target flap thickness was 5.3  $\mu\text{m}$  less than intended. For Visumax,<sup>28,40</sup> the difference from the target was 10.6  $\mu\text{m}$  more than intended. Wavelight FS200<sup>29,30</sup> produced corneal flaps that were close to the intended value (difference from the target flap thickness was +0.03  $\mu\text{m}$ ). The average SD for IntraLase FS 15 and 30 kHz was 15.5 and 13.8  $\mu\text{m}$ , respectively. For the most

**Table 1** Characteristics of the studies included in the meta-analysis of femtosecond lasers for LASIK

References (author, year)	Surgical procedure	Country	Eyes (n)	Preop mean SE (D) ± SD	Follow-up (mo)	Design	Jadad et al <sup>12</sup> quality score
Tran et al, 2005 <sup>20</sup>	IntraLase FS 10 kHz	USA	9	-2.58	3	Randomized	2
Durrrie and Stahl, 2004 <sup>32</sup>	IntraLase FS 15 kHz	USA	30	-4.66±1.73 (Custom Cornea)	1	Randomized	3
Javaloy et al, 2007 <sup>33</sup>	IntraLase FS 15 kHz	Spain	100	-4.83±1.71 (Zyoptix)	3	Randomized	4
Chan et al, 2008 <sup>34</sup>	IntraLase FS 15 kHz	USA	51	-3.98±1.89	12	Randomized	3
Durrrie and Kezirian, 2005 <sup>50</sup>	IntraLase FS 15 kHz	USA	51	-3.76±1.41	3	Randomized	3
Montes-Mico et al, 2007 <sup>21</sup>	IntraLase FS 30 kHz	Spain	100	-3.59	6	Randomized	4
Patel et al, 2007 <sup>41</sup>	IntraLase FS 15 kHz	USA	21	-2.85±1.79	6	Randomized	3
Munoz et al, 2010 <sup>35</sup>	IntraLase FS 15 kHz	Spain	48	-4.02±1.61	48	Randomized	4
Stonecipher and Kezirian, 2008 <sup>36</sup>	IntraLase FS 15 kHz	USA	188	3.98±2.35 (defocus) <sup>a</sup>	3	Randomized	1
			186	-(WF guided)			
			186	-(WF optimized)			
Alio and Pinero, 2008 <sup>31</sup>	IntraLase FS 30 kHz	Spain	22	-4.11±1.10	3	Randomized	5
Plaeffl et al, 2008 <sup>37</sup>	IntraLase FS 30 kHz	Germany	287	-4.1±3.6	Intraop	Prospective interventional case study	1
Rosa et al, 2009 <sup>38</sup>	IntraLase FS 60 kHz	Portugal	20	-4.48±2.55	3	Prospective cohort	1
Slade et al, 2009 <sup>13</sup>	IntraLase FS 60 kHz	USA	20	-5.60±1.05			
Prakash et al, 2010 <sup>14</sup>	IntraLase FS 60 kHz	India	50	-3.96	6	Randomized	3
			60	-5.70	1	Randomized	5
			60	-6.09			
			60	-5.98			
			60	-5.13			
			26	-4.34	6	Randomized	5
Hatch et al, 2011 <sup>15</sup>	IntraLase FS 60 kHz	USA	26	-4.34	6	Randomized	5
Prakash et al, 2011 <sup>16</sup>	IntraLase FS 60 kHz	India	385	-6.08±2.7	12	Randomized	5
			385	-5.99±2.8			
He et al, 2014 <sup>17</sup>	IntraLase FS 60 kHz	USA	55	-4.75±2.22 (WF guided)	12	Randomized	3
			55	-4.81±1.95 (WF optimized)			
Zhai et al, 2013 <sup>19</sup>	IntraLase FS 60 kHz	People's Republic of China	59	-7.15±2.87	1	Randomized	4
Tanzer et al, 2013 <sup>22</sup>	IntraLase FS 60 or 150 kHz	USA	544	-2.56	3	Prospective noncomparative two-site study	1
			57	-0.34			
			30	+1.86			
Yu and Manche, 2015 <sup>19</sup>	IntraLase FS 60 kHz	USA	61	-4.66±2.30	12	Randomized	3
	IntraLase FS 150 kHz		61	-4.62±2.32			
Sales and Manche, 2013 <sup>23</sup>	IntraLase FS 150 kHz	USA	36	-4.04±1.67 (WF guided)	12	Randomized	3
			36	-3.99±1.71 (WF optimized)			
Yu and Manche, 2014 <sup>25</sup>	IntraLase FS 150 kHz	USA	50	-3.89±1.67 (Allegretto Wave Eye-Q)	12	Prospective comparative case series	3
			50	-4.18±1.73 (Visx Star Customvue S4 IR)			
Vryghem et al, 2010 <sup>26</sup>	FEMTO LDV	Belgium	111	-4.91±2.45	6	Prospective, consecutive	1
Zhou et al, 2012 <sup>42</sup>	FEMTO LDV	People's Republic of China	360	-6.58±2.86	1 wk	Randomized	2
Rosman et al, 2013 <sup>24</sup>	Visumax 500 kHz	Singapore	45	-4.94±2.08	3	Randomized	5
	IntraLase FS 150 kHz		45	-4.91±2.09			
Ang et al, 2013 <sup>18</sup>	Visumax 500 kHz	Singapore	381	-5.41±2.22	3	Retrospective case review	1
	IntraLase FS 60 kHz		362	-5.34±2.28			

Author, Year	Country	Sample Size (n)	Mean Manifest Defocus (D)	Preoperative Refraction (D)	Postoperative Refraction (D)	Study Design
Lim et al, 2013 <sup>28</sup>	Korea	36	-5.25±1.53	-5.25±1.53	-5.25±1.53	Randomized
Kymionis et al, 2013 <sup>29</sup>	Greece	36	-4.89±1.40	-4.89±1.40	-4.89±1.40	Prospective nonrandomized
Cummings et al, 2013 <sup>30</sup>	Ireland	50	-4.15±1.69	-4.15±1.69	-4.15±1.69	Interventional case series
Ahn et al, 2011 <sup>40</sup>	Korea	378	-4.03±2.29	-4.03±2.29	-4.03±2.29	Retrospective consecutive case series
Arbelaez et al, 2009 <sup>27</sup>	Sultanate of Oman	50	-3.08±2.32 (defocus) <sup>a</sup>	-3.08±2.32 (defocus) <sup>a</sup>	-3.08±2.32 (defocus) <sup>a</sup>	Retrospective

**Notes:** Mean manifest defocus refraction as reported by the authors. Studies written in bold have been included in the previously published meta-analyses.<sup>10,11</sup>

**Abbreviations:** D, diopters; LASIK, laser-assisted in situ keratomileusis; SD, standard deviation; SE, refractive spherical equivalent; mo, months; VF, wave front; wk, weeks; preop, preoperative; intraop, intraoperative.

**Table 2** Postoperative outcome measures in the studies included in the meta-analysis of femtosecond lasers for LASIK

References (author, year)	Surgical procedure	Secondary outcomes						
		Primary outcomes	Target thickness (µm)	Measured flap thickness (µm) ± SD (range)	Postop complication (%)			
Tran et al, 2005 <sup>20</sup>	IntraLase FS 10 kHz	7	100	8	120	0	0	37.5
Durrie and Stahl, 2004 <sup>32</sup>	IntraLase FS 15 kHz	30	93	30	110	0	—	—
Javaloy et al, 2007 <sup>33</sup>	IntraLase FS 15 kHz	100	80 <sup>a</sup>	30	110	0	—	—
Chan et al, 2008 <sup>34</sup>	IntraLase FS 15 kHz	40	98	20	120	1	130.14±1.70	17
Durrie and Kezirian, 2005 <sup>50</sup>	IntraLase FS 15 kHz	51	98	51	118	—	—	—
Montes-Mico et al, 2007 <sup>21</sup>	IntraLase FS 30 kHz	100	100	100	120	0	—	—
Patel et al, 2007 <sup>41</sup>	IntraLase FS 15 kHz	21	0.01±0.11 <sup>LogMar</sup>	21	120	0.06±0.09 <sup>LogMar</sup>	143±16 (110–172)	0
Munoz et al, 2010 <sup>35</sup>	IntraLase FS 15 kHz	48	85.4	48	120	0	—	0
Stonescipher and Kezirian, 2008 <sup>36</sup>	IntraLase FS 15 kHz	188	93 (VF guided)	374	100–130	0	—	—
Alio and Pinero, 2008 <sup>31</sup>	IntraLase FS 30 kHz	22	—	22	110	13.6 <sup>a</sup>	115.95±6.22	0
Pfaeffl et al, 2008 <sup>37</sup>	IntraLase FS 30 kHz	287	—	287	100	0	100.4±13.6 (57–138)	2.8
Rosa et al, 2009 <sup>38</sup>	IntraLase FS 60 kHz	20	0.02±0.04 <sup>LogMar</sup>	20	120	—	143.1±18.4 (107.2–172.5)	—
		20	0.04±0.03 <sup>LogMar</sup>	20	120	—	115.5±12.5 (91.6–147.8) <sup>20 minutes</sup>	—

(Continued)

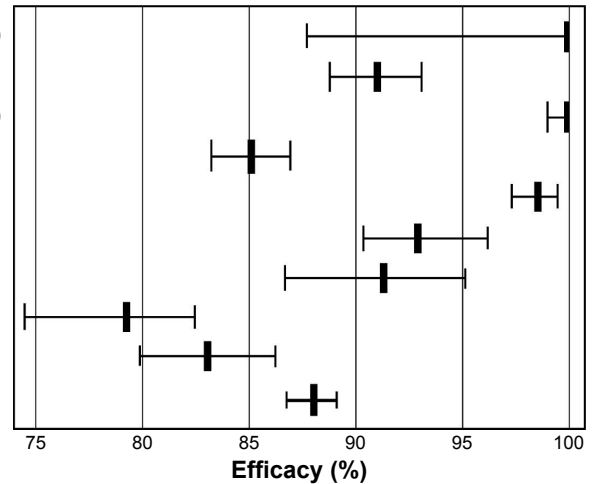
Table 2 (Continued)

References (author, year)	Surgical procedure	Primary outcomes			Secondary outcomes						
		Eyes (n)	Efficacy (%)	Predictability (%)	Safety (%)	Eyes (n)	Target thickness (µm)	Measured flap thickness (µm) ± SD (range)	Method	Intraop complication (%)	Postop complication (%)
Slade et al, 2009 <sup>13</sup>	IntraLase FS 60 kHz	50	92	–	0	25	100	112±5 (87–118)	OCT	0	0
Prakash et al, 2010 <sup>14</sup>	IntraLase FS 60 kHz	60	97	91.6	0	60	90	89.97±4.12	OCT	3.3	1.7
		60	80	90	0	60	100	99.96±5.30		5	3.3
		60	82	91.6	0	60	110	110.01±4.50		6.7	1.7
		60	87	93.3	0	60	120	119.26±4.94		3.3	1.7
Hatch et al, 2011 <sup>15</sup>	IntraLase FS 60 kHz	25	92	88	0	26	90	90.1±6.7 (76–102)	–	11.5	23.1
Prakash et al, 2011 <sup>16</sup>	IntraLase FS 60 kHz	368	82	95.1	0	368	100	100.6±6.9 (85–114)	OCT	0	0
		368	81	94.02	0	368	100	– (WF guided)	SUP	0	0
He et al, 2014 <sup>17</sup>	IntraLase FS 60 kHz	54	87	80	0	54	105	– (WF optimized)	SUP	0	0
		54	78	72	1.9	54	105	– (WF optimized)		–	–
Zhai et al, 2013 <sup>19</sup>	IntraLase FS 60 kHz	59	–	–	–	59	110	111±3 (104–120)	OCT	–	–
Tanzer et al, 2013 <sup>22</sup>	IntraLase FS 60 kHz or 150 kHz	497	98.2	–	0.4	544	–	–	–	0.2	0.2
		48	100	–	0	57	–	–	–	–	–
		23 <sup>b</sup>	95.7 <sup>b</sup>	–	0 <sup>b</sup>	30	–	–	–	–	–
Yu and Manche, 2015 <sup>19</sup>	IntraLase FS 60 kHz	61	93	95	2	61	105	–	–	0	0
		61	95	90	0	61	105	–	–	0	0
Sales and Manche, 2013 <sup>23</sup>	IntraLase FS 150 kHz	34	97	94	0	34	105	– (WF guided)	SUP	–	–
		34	97	85	0	34	105	– (WF optimized)		–	–
Yu and Manche, 2014 <sup>25</sup>	IntraLase FS 150 kHz	50	97.9	100	0	50	105	– (Allegretto Wave Eye-Q)	SUP	–	–
		50	91.5	92	0	50	105	– (Visx Star Customvue S4 IR)		–	–
Vryghem et al, 2010 <sup>26</sup>	FEMTO LDV	111	94.6	95.5	0	111	110	106.68±12.68 (84–149)	SUP	17.1	14.4
Zhou et al, 2012 <sup>42</sup>	FEMTO LDV	360	–	–	–	360	110	103.95±6.11	OCT	–	–
Rosman et al, 2013 <sup>24</sup>	Visumax 500 kHz	39	79.5	89.7	0	45	115	–	SUP	13.3	0
		39	82.1	84.6	0	45	110	–		2.2	0
Ang et al, 2013 <sup>18</sup>	Visumax 500 kHz	381	75.5	86.9	–	381	110–120	–	–	2.1	0.3
		362	75.0	87.3	–	362	100–110	–	–	0.3	0.6
Lim et al, 2013 <sup>28</sup>	IntraLase FS 60 kHz	36	95.8	100 <sup>c</sup>	0	36	80	83.46±3.50 (73–95)	OCT	Only OBL	–
		36	100	97.1	0	36	120	122.93±3.55 (107–131)		Only OBL	–
		42	86	86	0	42	105	102.98±6.33 (91–114)	OCT	4.8	0
Kymionis et al, 2013 <sup>29</sup>	Wavelight AG/Alcon FS200	42	86	–	–	42	105	–		–	–
Cummings et al, 2013 <sup>30</sup>	Wavelight FS200	378	83.4	91.0	0.3	431	120	120.23±13.94 (73–176)	SOP	0	0
		53 <sup>b</sup>	46.4 <sup>b</sup>	71.0 <sup>b</sup>	7.5 <sup>b</sup>	50	110	103.3±13.2	OCT	–	–
Ahn et al, 2011 <sup>40</sup>	IntraLase FS 60 kHz	50	–	–	–	50	110	133.9±13.9		–	–
		40	–	–	–	40	110	105.8±8.2		–	–
Arbelaez et al, 2009 <sup>27</sup>	FEMTO LDV	64	–	–	–	64	110	–		–	–
		50	84	76 <sup>d</sup>	0	50	110	–	SOP	0	0

Notes: –, not reported; <sup>a</sup>estimated from a figure; <sup>b</sup>hyperopic eyes were excluded; <sup>c</sup>refraction within the ±0.25 D of target refraction; <sup>d</sup>only astigmatism correction. Studies written in bold have been included in the previously published meta-analyses.<sup>10,11</sup>  
**Abbreviations:** CM, confocal microscopy; LASIK, laser-assisted in situ keratomileusis; OBL, opaque bubble layer; OCP, optical coherence pachymetry; OCT, optical coherence tomography; SD, standard deviation; SOP, subtraction online pachymetry, difference between preoperative corneal thickness and the thickness of corneal bed after flap lifting; SUP, subtraction ultrasound pachymetry; VHF, very-high-frequency digital ultrasound; WF, wave front; postop, postoperative; intraop, intraoperative; mo, month.

FS laser	Number of studies	UDVA <20/20/total	Mean (%)	95% CI
IntraLase FS 10 kHz	1	7/7	100.0	87.7–100.0
IntraLase FS 15 kHz	6	613/673	91.1	88.8–93.1
IntraLase FS 30 kHz	1	100/100	100.0	99.0–100.0
IntraLase FS 60 kHz	7	1,346/1,582	85.1	83.3–86.8
IntraLase FS 60 or 150 kHz	1	536/545	98.3	97.1–99.2
IntraLase FS 150 kHz	4	251/268	93.7	90.4–96.2
FEMTO LDV	2	147/161	91.3	86.4–95.1
Visumax	3	389/492	79.1	74.3–82.5
Wavelight FS200	2	351/420	83.6	79.8–86.9
<b>All</b>		<b>3,740/4,248</b>	<b>88.0</b>	<b>86.9–89.0</b>

$\chi^2=138.3, df=8 P<0.0001$



**Figure 2** Efficacy, the proportion of eyes within UDVA  $\geq 20/20$  after FS laser for LASIK.

**Abbreviations:**  $\chi^2$ , chi-square statistic; CI, confidence interval; *df*, degrees of freedom; FS, femtosecond; LASIK, laser-assisted in situ keratomileusis; UDVA, uncorrected distance visual acuity.

studied IntraLase FS 60 kHz, the average SD was 12.4  $\mu\text{m}$ . For FEMTO LDV, the reproducibility, the average SD was 8.2  $\mu\text{m}$ . For Visumax, the average SD was 23.3  $\mu\text{m}$  and for Wavelight FS200 14.3  $\mu\text{m}$ .

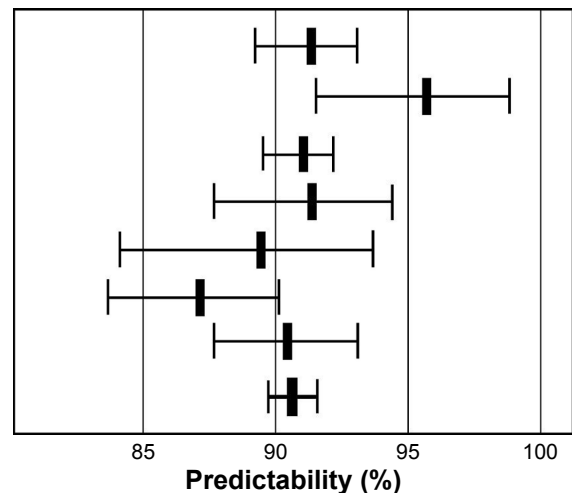
### Complication rates

Among the different IntraLase types, IntraLase FS 10 kHz<sup>20</sup> had no intraoperative complications, but postoperative complication rate was 37.5% (one study was included; Figures 6 and 7). IntraLase FS 15 kHz<sup>33–35,41</sup> had no intraoperative complications, but the average postoperative complication rate was 18.0%.

IntraLase FS 30 kHz<sup>31,37</sup> had no intraoperative complications, while the percentage for postoperative complication was 2.6%. IntraLase FS 60 kHz<sup>13–19</sup> had the average intraoperative and postoperative complication rates of 1.4% and 3.2%, respectively. IntraLase 150 kHz<sup>19,24</sup> had the average intraoperative complication rate of 0.9% and postoperative complication rate of 0%. FEMTO LDV<sup>26,27</sup> had the average intraoperative complication rate of 11.8%. The postoperative complication rate for FEMTO LDV averaged 9.9%. For Visumax,<sup>24,28</sup> intraoperative and postoperative complication rates averaged 3.3% and 0.2%, respectively. Wavelight FS200<sup>29,30</sup> had the lowest

FS laser	Number of studies	Within $\pm 0.5$ D/total	Mean (%)	95% CI
IntraLase FS 15 kHz	7	634/694	91.4	89.1–93.3
IntraLase FS 30 kHz	2	117/122	95.9	91.6–98.7
IntraLase FS 60 kHz	6	1,394/1,532	91.0	89.5–92.4
IntraLase FS 150 kHz	4	245/268	91.4	87.7–94.4
FEMTO LDV	2	144/161	89.4	84.1–93.7
Visumax	2	366/420	87.1	83.7–90.1
Wavelight FS200	2	380/420	90.5	87.5–93.1
<b>All</b>		<b>3,280/3,617</b>	<b>90.7</b>	<b>89.7–91.7</b>

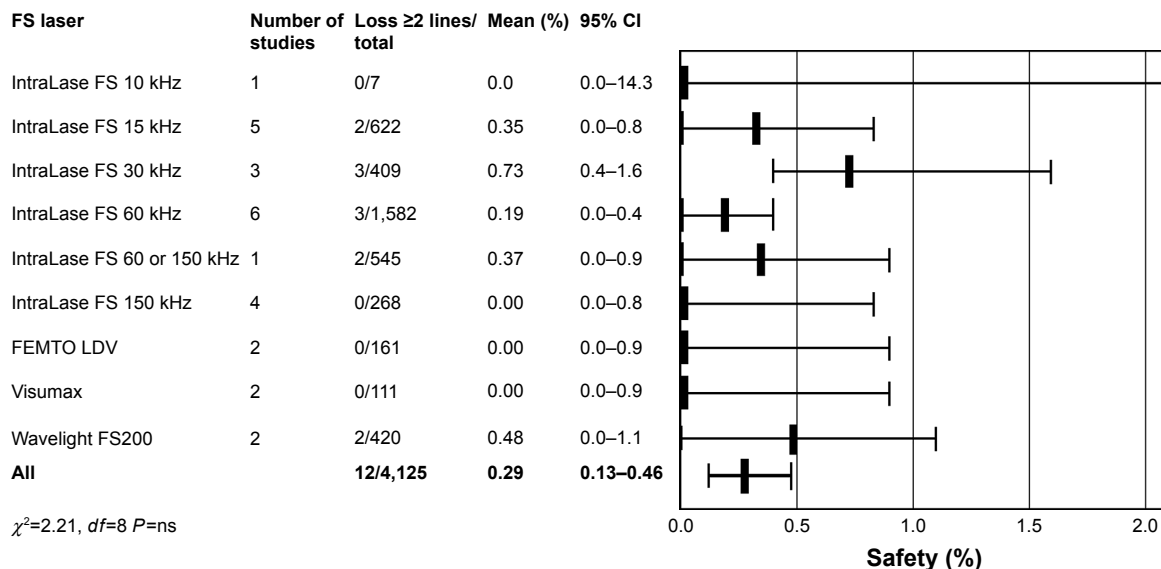
$\chi^2=12.68, df=6 P=ns$



**Figure 3** Predictability, the proportion of eyes within  $\pm 0.5$  D of target refraction after FS laser for LASIK.

**Abbreviations:**  $\chi^2$ , chi-square statistic; CI, confidence interval; D, diopters; *df*, degrees of freedom; FS, femtosecond; LASIK, laser-assisted in situ keratomileusis; ns, nonsignificant.





**Figure 4** Safety, the proportion of eyes losing two or more Snellen lines of CDVA after FS laser for LASIK.

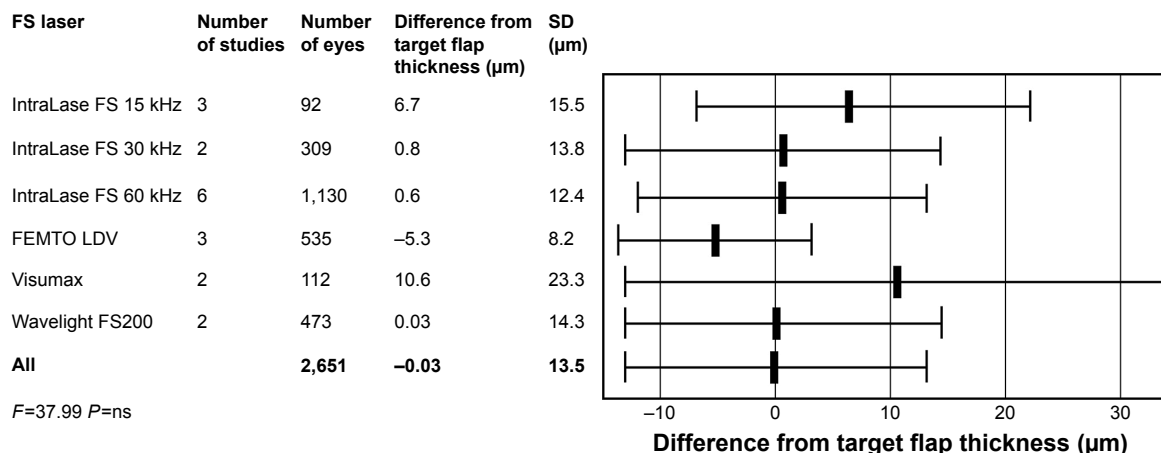
**Abbreviations:** CDVA, corrected distance visual acuity;  $\chi^2$ , chi-square statistic; CI, confidence interval; *df*, degrees of freedom; FS, femtosecond; LASIK, laser-assisted in situ keratomileusis; ns, nonsignificant.

intraoperative and postoperative complication rates of 0.4% and 0%, respectively.

### Discussion

This meta-analysis compared different types of FS lasers for LASIK. In the literature search, we found 109 potentially relevant abstracts for review, but only 47 were suitable for a full paper review. Additionally, we included one study<sup>33</sup> from the previously published meta-analyses.<sup>10,11</sup> From these 48 articles, we excluded 17 papers based on lacking or duplicate data, and the final analysis included 31 articles. For primary outcome measures, hyperopic eyes were excluded. No studies were excluded from the analysis due to the low-quality scoring by Jadad et al system.<sup>12</sup>

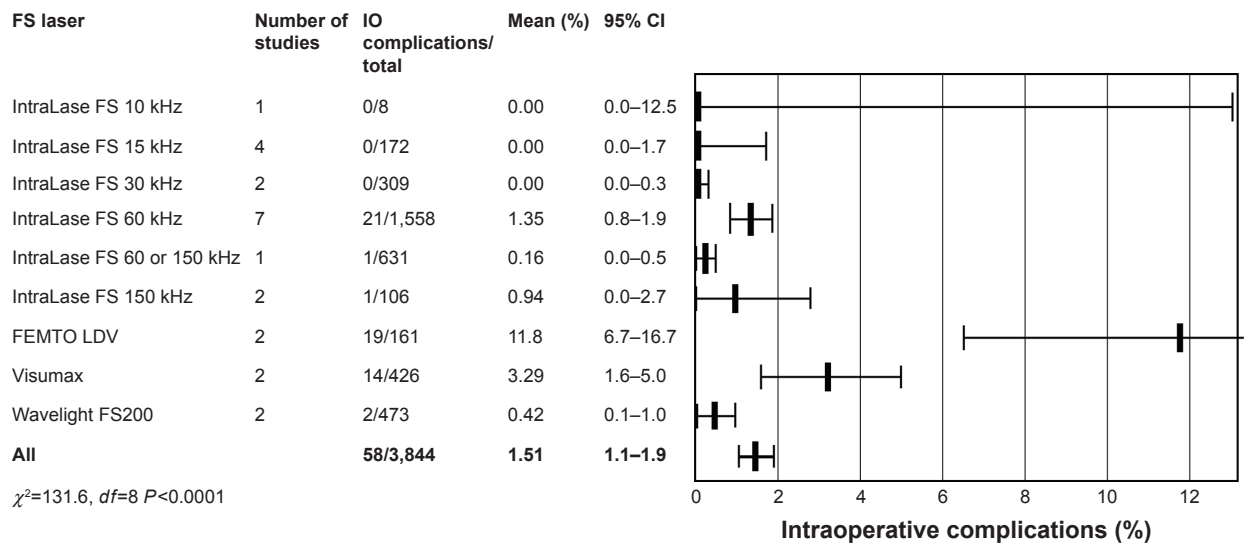
The different FS laser systems can be classified into two groups: one group is characterized with high pulse energy–low pulse frequency (such as IntraLase and Femtec) and the other with low pulse energy–high pulse frequency (such as FEMTO LDV and Wavelight FS200).<sup>7</sup> In the FS laser technology in the high pulse energy–low pulse frequency group, pulse energies are in the range of 1  $\mu$ J and repetition rates on the order of kilohertz.<sup>7</sup> The low pulse energy–high pulse frequency system delivers only pulse energy on the order of nano-joule and uses megahertz repetition rates.<sup>7</sup> From all FS lasers on the market, IntraLase was the first introduced and different IntraLase FS types (10, 15, 30, 60, and 150 kHz) are the most commonly reported.



**Figure 5** Corneal flap measurements after FS laser for LASIK.

**Abbreviations:** *F*, *F* factor; FS, femtosecond; LASIK, laser-assisted in situ keratomileusis; ns, nonsignificant; SD, standard deviation.





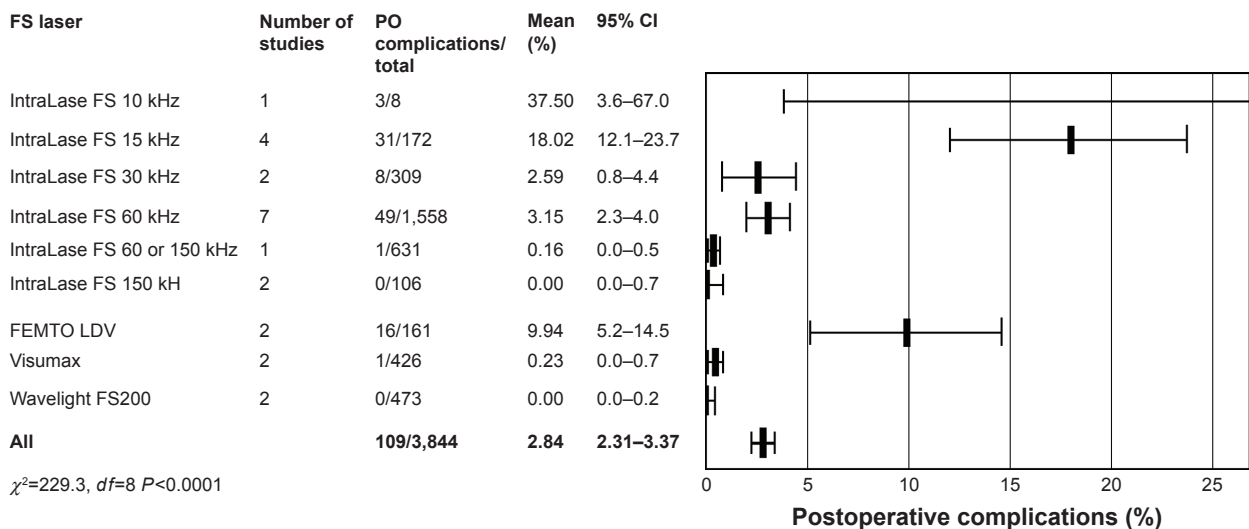
**Figure 6** Intraoperative complications after FS laser for LASIK.

**Abbreviations:**  $\chi^2$ , chi-square statistic; CI, confidence interval; *df*, degrees of freedom; FS, femtosecond; IO, intraoperative; LASIK, laser-assisted in situ keratomileusis.

The pooled primary outcome results showed that there was a statistically significant difference in the proportion of eyes within a UDVA of 20/20 or better (efficacy). Based on efficacy, IntraLase and FEMTO LDV gave the best results. There were also statistically significant differences in the mean spherical equivalent refraction within  $\pm 0.5$  D of target refraction (predictability). Based on predictability, IntraLase types FS 15, FS 30, and FS 60 kHz were the best. There was no statistically significant difference in the loss of  $\geq 2$  Snellen lines of CDVA (safety) between different FS lasers.

It was difficult to combine the results of randomized controlled trials because of different follow-up times. In the 31

studies chosen for this meta-analysis, the follow-up time was  $\leq 1$  month in five studies.<sup>14,32,37,39,42</sup> The most commonly reported follow-up times were 3 months (ten studies)<sup>18,20,22,24,30,31,33,36,38,50</sup> and 6 months (eight studies).<sup>13,15,21,26–29,41</sup> The follow-up time was  $\geq 1$  year only in seven cases.<sup>16,17,19,23,25,34,35</sup> Long follow-up times should be recommended for reporting refractive results, especially in controlled randomized studies. In the meta-analysis, different excimer laser choices used in LASIK made it also more difficult to compare refractive results. Another drawback of this meta-analysis is that due to limited reporting, the results were pooled together from standard, wavefront-guided, and wavefront-optimized treatments, and there was no compensation for this.



**Figure 7** Postoperative complications after FS laser for LASIK.

**Abbreviations:**  $\chi^2$ , chi-square statistic; CI, confidence interval; *df*, degrees of freedom; FS, femtosecond; LASIK, laser-assisted in situ keratomileusis; PO, postoperative.

Mechanical microkeratomes typically create meniscus-shaped flaps that are thinner in the center and thicker in the periphery, whereas FS laser flaps have been found to be typically more uniformly planar.<sup>43–47</sup> Preliminary studies with the IntraLase FS laser have demonstrated that free flaps, irregular flaps, microperforations, decentered flaps, epithelial defects, and abrasions were significantly reduced or eliminated.<sup>48–50</sup> The SD of achieved flap thickness with FS lasers has also been found to be narrower than with mechanical systems.<sup>4,46</sup>

Although in this meta-analysis flap thickness measurements and complication rates were classified as secondary outcomes from the surgeons' point of view, they are in fact the areas of major concern in LASIK. In the meta-analysis, the pooled secondary outcome results showed some variations between different FS lasers. Based on the SD of the measured flap thicknesses, FEMTO LDV reproduced the most accurate flap thicknesses.

Certain complications have been shown to be unique to the FS laser, such as transient opaque bubble layer (OBL),<sup>51–55</sup> especially with the IntraLase, transient light sensitivity syndrome,<sup>56,57</sup> increased corneal backscatter,<sup>41</sup> and rainbow glare.<sup>58–60</sup> The incidence of transient OBL, transient light sensitivity syndrome, and rainbow glare has reduced with lower energies used. In this meta-analysis, IntraLase and Wavelight SF200 had the fewest intraoperative complications. IntraLase FS 60 kHz, Visumax, and Wavelight FS200 had the most seldom postoperative complications. In the meta-analysis, it was difficult to compare the complications based on the percentage of complications reported in the studies. In general, there were very few intraoperative complications reported. The most common intraoperative complications were a loss of suction, OBL, and adhesions. The most frequently reported postoperative complications were diffuse lamellar keratitis and microstriae. No ectasia was found in these studies. However, there seemed to be big differences between authors in reporting complications in LASIK. For instance, in the first FEMTO LDV study that reported the results of a preproduction FS laser system, its intraoperative complication rate was 17.1% and postoperative complication rate was 14.4%.<sup>26</sup> Furthermore, there was a mild epithelial sloughing in 11.8% of the eyes. Yet, in another FEMTO LDV study, there were no complications.<sup>27</sup> Therefore, we suggest a standardized system for reporting complications in refractive surgery. Intraoperative side effects that do not have any effects on the refractive outcome should also be reported, such as OBL, decentered, incomplete or free flaps, and flap adhesion. Bleeding from the limbal vessels should also be reported.

## Conclusion

In conclusion, there were dissimilarities between different FS lasers based on efficacy and intraoperative and postoperative complications. All FS lasers were predictable and safe for making corneal flaps in LASIK.

## Acknowledgment

Dr Matti Kataja is acknowledged for his statistical and graphical expertise.

## Disclosure

Dr Pietilä has financial interest in the Ziemer Ophthalmic Systems. The other authors report no conflicts of interest in this work.

## References

1. Sugar A, Rapuano CJ, Culbertson WW, et al. Laser in situ keratomileusis for myopia and astigmatism: safety and efficacy – a report by the American academy of ophthalmology. *Ophthalmology*. 2002;109(1):175–187.
2. Varley GA, Huang D, Rapuano CJ, Schallhorn S, Wachler BSB, Sugar A. LASIK for hyperopia, hyperopic astigmatism, and mixed astigmatism – a report by the American Academy of Ophthalmology. *Ophthalmology*. 2004;111(8):1604–1617.
3. Stonecipher K, Ignacio TS, Stonecipher M. Advances in refractive surgery: microkeratome and femtosecond laser flap creation in relation to safety, efficacy, predictability, and biomechanical stability. *Curr Opin Ophthalmol*. 2006;17(4):368–372.
4. Pietilä J. Flap Creation in Laser-Assisted in Situ Keratomileusis: From Microkeratome to Femtosecond Laser. Tampere: Tampere University Press; 2012.
5. Kurtz RM, Liu X, Elnor VM, Squier JA, Du D, Mourou GA. Photodisruption in the human cornea as a function of laser pulse width. *J Refract Surg*. 1997;13(7):653–658.
6. Sugar A. Ultrafast (femtosecond) laser refractive surgery. *Curr Opin Ophthalmol*. 2002;13(4):246–249.
7. Lubatschowski H. Overview of commercially available femtosecond lasers in refractive surgery. *J Refract Surg*. 2008;24(1):S102–S107.
8. Farjo AA, Sugar A, Schallhorn SC, et al. Femtosecond lasers for LASIK flap creation: a report by the American Academy of Ophthalmology. *Ophthalmology*. 2013;120(3):e5–e20.
9. Slade SG. The use of the femtosecond laser in the customization of corneal flaps in laser in situ keratomileusis. *Curr Opin Ophthalmol*. 2007;18(4):314–317.
10. Zhang ZH, Jin HY, Suo Y, et al. Femtosecond laser versus mechanical microkeratome laser in situ keratomileusis for myopia: metaanalysis of randomized controlled trials. *J Cataract Refract Surg*. 2011;37(12):2151–2159.
11. Chen S, Feng Y, Stojanovic A, Jankov MR, Wang Q. IntraLase femtosecond laser vs mechanical microkeratomes in LASIK for myopia: a systematic review and meta-analysis. *J Refract Surg*. 2012;28(1):15–24.
12. Jadad AR, Moore RA, Carroll D, et al. Assessing the quality of reports of randomized clinical trials: is blinding necessary? *Control Clin Trials*. 1996;17(1):1–12.
13. Slade SG, Durrie DS, Binder PS. A prospective, contralateral eye study comparing thin-flap LASIK (sub-Bowman keratomileusis) with photorefractive keratectomy. *Ophthalmology*. 2009;116(6):1075–1082.
14. Prakash G, Agarwal A, Yadav A, et al. A prospective randomized comparison of four femtosecond LASIK flap thicknesses. *J Refract Surg*. 2010;26(6):392–402.

15. Hatch BB, Moshirfar M, Ollerton AJ, Sikder S, Mifflin MD. A prospective, contralateral comparison of photorefractive keratectomy (PRK) versus thin-flap LASIK: assessment of visual function. *Clin Ophthalmol*. 2011;5:451–457.
16. Prakash G, Agarwal A, Kumar DA, et al. Femtosecond sub-bowman keratomileusis: a prospective, long-term, intereye comparison of safety and outcomes of 90- versus 100- $\mu$ m flaps. *Am J Ophthalmol*. 2011;154(4):582–590.
17. He L, Liu A, Manche EE. Wavefront-guided versus wavefront-optimized laser in situ keratomileusis for patients with myopia: a prospective Randomized Contralateral Eye Study. *Am J Ophthalmol*. 2014;157(6):1170–1178.
18. Ang M, Mehta JS, Rosman M, et al. Visual outcomes comparison of 2 femtosecond laser platforms for laser in situ keratomileusis. *J Cataract Refract Surg*. 2013;39(11):1647–1652.
19. Yu CQ, Manche EE. Comparison of 2 femtosecond lasers for flap creation in myopic laser in situ keratomileusis: one-year results. *J Cataract Refract Surg*. 2015;41(4):740–748.
20. Tran DB, Sarayba MA, Bor Z, et al. Randomized prospective clinical study comparing induced aberrations with IntraLase and Hansatome flap creation in fellow eyes: potential impact on wavefront-guided laser in situ keratomileusis. *J Cataract Refract Surg*. 2005;31(1):97–105.
21. Montes-Mico R, Rodriguez-Galietero A, Alio JL. Femtosecond laser versus mechanical keratome LASIK for myopia. *Ophthalmology*. 2007;114(1):62–68.
22. Tanzer DJ, Brunstetter T, Zeber R, et al. Laser in situ keratomileusis in United States Naval aviators. *J Cataract Refract Surg*. 2013;39(7):1047–1058.
23. Sales CS, Manche EE. One-year outcomes from a prospective, randomized, eye-to-eye comparison of wavefront-guided and wavefront-optimized LASIK in myopes. *Ophthalmology*. 2013;120(12):2396–2402.
24. Rosman M, Hall RC, Chan C, et al. Comparison of efficacy and safety of laser in situ keratomileusis using 2 femtosecond laser platforms in contralateral eyes. *J Cataract Refract Surg*. 2013;39(7):1066–1073.
25. Yu CQ, Manche EE. Comparison of 2 wavefront-guided excimer lasers for myopic laser in situ keratomileusis: one-year results. *J Cataract Refract Surg*. 2014;40(3):412–422.
26. Vryghem JC, Devogelaere T, Stodulka P. Efficacy, safety, and flap dimensions of a new femtosecond laser for laser in situ keratomileusis. *J Cataract Refract Surg*. 2010;36(3):442–448.
27. Arbelaez MC, Vidal C, Arba-Mosquera S. Excimer laser correction of moderate to high astigmatism with a non-wavefront-guided aberration-free ablation profile: six-month results. *J Cataract Refract Surg*. 2009;35(10):1789–1798.
28. Lim DH, Keum JE, Ju WK, Lee JH, Chung TY, Chung ES. Prospective contralateral eye study to compare 80- and 120- $\mu$ m flap LASIK using the VisuMax femtosecond laser. *J Refract Surg*. 2013;29(7):462–468.
29. Kymionis GD, Kontadakis GA, Grentzelos MA, et al. Thin-flap laser in situ keratomileusis with femtosecond-laser technology. *J Cataract Refract Surg*. 2013;39(9):1366–1371.
30. Cummings AB, Cummings BK, Kelly GE. Predictability of corneal flap thickness in laser in situ keratomileusis using a 200 kHz femtosecond laser. *J Cataract Refract Surg*. 2013;39(3):378–385.
31. Alio JL, Pinero DP. Very high-frequency digital ultrasound measurement of the LASIK flap thickness profile using the IntraLase femtosecond laser and M2 and Carriazo-Pendular microkeratomes. *J Refract Surg*. 2008;24(1):12–23.
32. Durrie DS, Stahl J. Randomized comparison of custom laser in situ keratomileusis with the Alcon Custom Cornea and the Bausch & Lomb Zyoptix systems: one-month results. *J Refract Surg*. 2004;20(5):S614–S618.
33. Javaloy J, Vidal MT, Abdelrahman AM, Artola A, Alio JL. Confocal microscopy comparison of intralase femtosecond laser and Moria M2 microkeratome in LASIK. *J Refract Surg*. 2007;23(2):178–187.
34. Chan A, Ou J, Manche EE. Comparison of the femtosecond laser and mechanical keratome for laser in situ keratomileusis. *Arch Ophthalmol*. 2008;126(11):1484–1490.
35. Munoz G, Albarran-Diego C, Ferrer-Blasco T, Garcia-Lazaro S, Cervino-Exposito A. Long-term comparison of corneal aberration changes after laser in situ keratomileusis: mechanical microkeratome versus femtosecond laser flap creation. *J Cataract Refract Surg*. 2010;36(11):1934–1944.
36. Stonecipher KG, Kezirian GM. Wavefront-optimized versus wavefront-guided LASIK for myopic astigmatism with the ALLEGRETTO WAVE: three-month results of a prospective FDA trial. *J Refract Surg*. 2008;24(4):S424–S430.
37. Pfaeffl WA, Kunze M, Zenk U, Pfaeffl MB, Schuster T, Lohmann C. Predictive factors of femtosecond laser flap thickness measured by online optical coherence pachymetry subtraction in sub-Bowman keratomileusis. *J Cataract Refract Surg*. 2008;34(11):1872–1880.
38. Rosa AM, Neto MJ, Quadrado MJ, et al. Femtosecond laser versus mechanical microkeratomes for flap creation in laser in situ keratomileusis and effect of postoperative measurement interval on estimated femtosecond flap thickness. *J Cataract Refract Surg*. 2009;35(5):833–838.
39. Zhai CB, Tian L, Zhou YH, Zhang QW, Zhang J. Comparison of the flaps made by femtosecond laser and automated keratomes for sub-bowman keratomileusis. *Chin Med J (Engl)*. 2013;126(13):2440–2444.
40. Ahn H, Kim JK, Kim CK, et al. Comparison of laser in situ keratomileusis flaps created by 3 femtosecond lasers and a microkeratome. *J Cataract Refract Surg*. 2011;37(2):349–357.
41. Patel SV, Maguire LJ, McLaren JW, Hodge DO, Bourne WM. Femtosecond laser versus mechanical microkeratome for LASIK: a randomized controlled study. *Ophthalmology*. 2007;114(8):1482–1490.
42. Zhou Y, Zhang J, Tian L, Zhai C. Comparison of laser in situ keratomileusis flaps created by 3 femtosecond lasers and a microkeratome. *J Refract Surg*. 2012;28(3):189–194.
43. Holzer MP, Rabsilber TM, Auffarth GU. Femtosecond laser-assisted corneal flap cuts: morphology, accuracy, and histopathology. *Invest Ophthalmol Vis Sci*. 2006;47(7):2828–2831.
44. Krueger RR, Dupps WJ Jr. Biomechanical effects of femtosecond and microkeratome-based flap creation: prospective contralateral examination of two patients. *J Refract Surg*. 2007;23(8):800–807.
45. von Jagow JB, Kohnen T. Corneal architecture of femtosecond laser and microkeratome flaps imaged by anterior segment optical coherence tomography. *J Cataract Refract Surg*. 2009;35(1):35–41.
46. Vaddavalli PK, Yoo SH. Femtosecond laser in-situ keratomileusis flap configurations. *Curr Opin Ophthalmol*. 2011;22(4):245–250.
47. Srivannaboon S, Sunlakaviset P, Kosrirukvongs P, et al. Refractive outcomes of femtosecond LASIK for myopic correction at Siriraj Hospital, Thailand. *J Med Assoc Thai*. 2012;95(suppl 4):S18–S23.
48. Kezirian GM, Stonecipher KG. Comparison of the IntraLase femtosecond laser and mechanical keratomes for laser in situ keratomileusis. *J Cataract Refract Surg*. 2004;30(4):804–811.
49. Binder PS. Flap dimensions created with the IntraLase FS laser. *J Cataract Refract Surg*. 2004;30(1):26–32.
50. Durrie DS, Kezirian GM. Femtosecond laser versus mechanical keratome flaps in wavefront-guided laser in situ keratomileusis: prospective contralateral eye study. *J Cataract Refract Surg*. 2005;31(1):120–126.
51. Lifshitz T, Levy J, Klemperer I, Levinger S. Anterior chamber gas bubbles after corneal flap creation with a femtosecond laser. *J Cataract Refract Surg*. 2005;31(11):2227–2229.
52. Srinivasan S, Rootman DS. Anterior chamber gas bubble formation during femtosecond laser flap creation for LASIK. *J Refract Surg*. 2007;23(8):828–830.
53. Srinivasan S, Herzig S. Sub-epithelial gas breakthrough during femtosecond laser flap creation for LASIK. *Br J Ophthalmol*. 2007;91(10):1373.
54. Kaiserman I, Maresky HS, Bahar I, Rootman DS. Incidence, possible risk factors, and potential effects of an opaque bubble layer created by a femtosecond laser. *J Cataract Refract Surg*. 2008;34(3):417–423.

55. Kanellopoulos AJ, Asimellis G. Digital analysis of flap parameter accuracy and objective assessment of opaque bubble layer in femtosecond laser-assisted LASIK: a novel technique. *Clin Ophthalmol*. 2013; 7:343–351.
56. Stonecipher KG, Dishler JG, Ignacio TS, Binder PS. Transient light sensitivity after femtosecond laser flap creation: clinical findings and management. *J Cataract Refract Surg*. 2006;32(1):91–94.
57. Munoz G, Albarran-Diego C, Sakla HF, Javaloy J, Alio JL. Transient light-sensitivity syndrome after laser in situ keratomileusis with the femtosecond laser incidence and prevention. *J Cataract Refract Surg*. 2006;32(12):2075–2079.
58. Krueger RR, Thornton IL, Xu M, Bor Z, van den Berg TJ. Rainbow glare as an optical side effect of IntraLASIK. *Ophthalmology*. 2008;115(7): 1187–1195.
59. Bamba S, Rocha KM, Ramos-Esteban JC, Krueger RR. Incidence of rainbow glare after laser in situ keratomileusis flap creation with a 60 kHz femtosecond laser. *J Cataract Refract Surg*. 2009;35(6):1082–1086.
60. Gatinel D, Saad A, Guilbert E, Rouger H. Unilateral rainbow glare after uncomplicated femto-LASIK using the FS-200 femtosecond laser. *J Refract Surg*. 2013;29(7):498–501.

## Clinical Ophthalmology

Dovepress

### Publish your work in this journal

Clinical Ophthalmology is an international, peer-reviewed journal covering all subspecialties within ophthalmology. Key topics include: Optometry; Visual science; Pharmacology and drug therapy in eye diseases; Basic Sciences; Primary and Secondary eye care; Patient Safety and Quality of Care Improvements. This journal is indexed on

Submit your manuscript here: <http://www.dovepress.com/clinical-ophthalmology-journal>

PubMed Central and CAS, and is the official journal of The Society of Clinical Ophthalmology (SCO). The manuscript management system is completely online and includes a very quick and fair peer-review system, which is all easy to use. Visit <http://www.dovepress.com/testimonials.php> to read real quotes from published authors.