

## RESEARCH ARTICLE

# Intergrading reef communities across discrete seaweed habitats in a temperate–tropical transition zone: Lessons for species reshuffling in a warming ocean

Yannick Mulders<sup>1</sup>  | Karen Filbee-Dexter<sup>1,2</sup>  | Sahira Bell<sup>1</sup>  | Nestor E. Bosch<sup>1</sup>  |  
 Albert Pessarrodona<sup>1</sup>  | Defne Sahin<sup>1</sup>  | Sofie Vranken<sup>1</sup>  | Salvador Zarco-Perello<sup>1</sup>  |  
 Thomas Wernberg<sup>1,2,3</sup> 

<sup>1</sup>UWA Oceans Institute and School of Biological Sciences, Perth, WA, Australia

<sup>2</sup>Institute of Marine Research, Bergen, Norway

<sup>3</sup>Department of Science and Environment, Roskilde University, Roskilde, Denmark

## Correspondence

Yannick Mulders, University of Western Australia, 35 Stirling Hwy, Crawley WA 6009, Australia.

Email: yannick.mulders@research.uwa.edu.au

## Funding information

Winifred V. Scott Estate; Australian Research Council, Grant/Award Number: DE1901006192 and DP170100023

## Abstract

Temperate reefs are increasingly affected by the direct and indirect effects of climate change. At many of their warm range edges, cool-water kelps are decreasing, while seaweeds with warm-water affinities are increasing. These habitat-forming species provide different ecological functions, and shifts to warm-affinity seaweeds are expected to modify the structure of associated communities. Predicting the nature of such shifts at the ecosystem level is, however, challenging, as they often occur gradually over large geographical areas. Here, we take advantage of a climatic transition zone, where cool-affinity (kelp) and warm-affinity (*Sargassum*) seaweed forests occur adjacently under similar environmental conditions, to test whether these seaweed habitats support different associated seaweed, invertebrate, coral, and fish assemblages. We found clear differences in associated seaweed assemblages between habitats characterized by kelp and *Sargassum* abundance, with kelp having higher biomass and seaweed diversity and more cool-affinity species than *Sargassum* habitats. The multivariate invertebrate and fish assemblages were not different between habitats, despite a higher diversity of fish species in the *Sargassum* habitat. No pattern in temperature affinity of the invertebrate or fish assemblages in each habitat was found, and few fish species were exclusive to one habitat or the other. These findings suggest that, as ocean warming continues to replace kelps with *Sargassum*, the abundance and diversity of associated seaweeds could decrease, whereas fish could increase. Nevertheless, the more tropicalized seaweed habitats may provide a degree of functional redundancy to associated fauna in temperate seaweed habitats.

## KEYWORDS

fish ecology, invertebrate ecology, ocean warming, seaweed ecology, species distribution, subtidal reefs, temperate-to-tropical transition zone

## JEL CLASSIFICATION

Ecosystem ecology

This is an open access article under the terms of the Creative Commons Attribution License, which permits use, distribution and reproduction in any medium, provided the original work is properly cited.

© 2022 The Authors. *Ecology and Evolution* published by John Wiley & Sons Ltd.

## 1 | INTRODUCTION

Changing species distributions are some of the most pervasive effects of global warming on natural ecosystems of the world (Pecl et al., 2017). The geographic distribution of many groups of marine species has been altered through changes in habitat suitability, dispersal trajectories, and mortality rates (Beaugrand et al., 2008; Chen et al., 2011; Perry et al., 2005; Poloczanska et al., 2013; Wernberg, Bennett, et al., 2016), often with substantial socio-economic consequences (Free et al., 2019; Smale et al., 2019; Thiault et al., 2019). These changes have been documented extensively in coastal locations, and their prevalence is predicted to intensify as global warming continues (Assis et al., 2018; Cheung et al., 2009; Martínez et al., 2018; Molinos et al., 2015; Wilson et al., 2019).

The reorganization of marine biodiversity across the globe is often characterized by expansions, contractions, or range shifts toward higher latitudes (Blowes et al., 2019; Lonhart et al., 2019; Vergés, Steinberg, et al., 2014). Among other environmental drivers (e.g., storms, acidification, or sedimentation), increasing temperatures drive species with affinities to warmer temperature (e.g., tropical species) into temperate ecosystems, a phenomenon commonly known as “tropicalization” (Vergés, Tomas, et al., 2014). The range shifts and persistence of species are dependent on their distinctive thermal tolerances, different acclimatization and adaptation capacities, dispersal abilities, and biological interactions, such as the presence of adequate habitat and food resources, competition, and predation (Gilman et al., 2010; Van der Putten et al., 2010). Range shifts of one species can also decouple ecological interactions if other species responses are incompatible within the range (Schweiger et al., 2008), adding further complexity to ecosystem-level responses to ocean warming. Therefore, the mixing and rearranging of species with differing temperature affinity can lead to novel community compositions (Urban et al., 2012; Vergés, Steinberg, et al., 2014; Williams et al., 2007).

As progressing tropicalization forces increasing convergence of temperate and tropical species, the classic notion of discreteness between temperate and tropical ecosystems is blurring (Pinsky et al., 2020; Stuart-Smith et al., 2017). Worldwide, the pole-ward shift of species has been reported for many taxa belonging to different trophic levels and functional groups (Jones & Cheung, 2015). These include sessile and benthic species such as seaweeds and seagrasses (Hyndes et al., 2016; Wernberg et al., 2011), echinoderms, mollusks (Mulders & Wernberg, 2020), hermatypic corals (Price et al., 2019), and highly mobile fauna such as fish (Hastings et al., 2020; Vergés, Tomas, et al., 2014). However, changes in the composition of foundation species will have the greatest consequences for the functioning of the ecosystems (Vergés et al., 2019). In temperate reefs, canopy-forming seaweed of the order laminariales (kelp) is a dominant foundation species that control the community structure by providing shelter and food to many species, as well as modifying the environmental conditions (through shading, current dampening, particle entrainment) to facilitate some species over others (Cavanaugh et al., 2019; Wernberg et al., 2019). Thus, changes in the composition of

such species can have strong effects across multiple trophic levels (Norderhaug et al., 2020; Teagle et al., 2017).

Kelp forests are in decline in many regions of the world, and this is forecasted to continue in the future due to the direct and indirect effects of climate change (Martínez et al., 2018; Wernberg et al., 2019). This has led to impoverished ecosystem states dominated by turf algae or sea urchin barrens in some regions (Filbee-Dexter & Wernberg, 2018; Ling et al., 2010; Rogers-Bennett & Catton, 2019); however, in some places, the primary foundation species in kelp forests have been replaced with alternative foundation species, such as invasive seaweeds (Filbee-Dexter et al., 2016; Thomsen et al., 2019), or seaweeds with a more tropical affinity, such as *Sargassum* species (e.g., Engelen et al., 2008; Serisawa et al., 2004), which is predicted to be one of the key future scenarios for kelp forests more broadly (Vergés et al., 2019). The outcomes of this replacement are likely to have important consequences for the services that these ecosystems provide and thus is of paramount importance to understand the possible consequences of the rearrangement of their communities in the future (Beas-Luna et al., 2020; Pessarrodona et al., 2019; Vergés et al., 2019).

Due to warming and periodically increasing flow of the southwards-flowing Leeuwin Current over the past couple of decades, Western Australia (WA) has become one of the tropicalization hot spots of the world. As a result, tropical fauna has infiltrated into higher latitudes (Hyndes et al., 2016; Richards et al., 2016; Wernberg, Bennett, et al., 2016; Zarco-Perello et al., 2017), while kelp forests are experiencing range contractions, which is happening concurrently with increases in the abundance of *Sargassum* species (Wernberg et al., 2016). This suggests that a shift from kelp to *Sargassum* dominance—and possibly eventually even coral dominance—could be a possible outcome of future warming in this region (Martínez et al., 2018; Tuckett et al., 2017; Vergés et al., 2019).

Assessing the effects of the substitution of habitat providers due to climate change in temperate reefs is difficult, particularly in natural settings, because these changes occur gradually over long temporal scales. However, changes over time in a larger geographical area are expected to be similar to changes over space within constrained climatic transition zones (Agostini et al., 2018; Vergés, Steinberg, et al., 2014; Wernberg et al., 2012). By utilizing this “space-for-time substitution” approach, existing transition zones between temperate and tropical boundaries are particularly useful to study the effects of global warming, providing unique insights into possible trajectories of ecosystems in these rapidly shifting regions. In particular, these climatic transition zones, where different habitat configurations co-exist in adjacent areas under similar environmental conditions and propagule supply, provide an opportunity to disentangle the influence of changing foundation species and shifting species distributions on the trajectory of communities.

This study focused on the Houtman Abrolhos archipelago, which is located ~80 km off the coast of Geraldton in the midwest of Western Australia. The archipelago is positioned within the main flow of the Leeuwin Current, which runs south from tropical to temperate latitudes, carrying warm oligotrophic waters and many

tropical species (Hutchins & Pearce, 1994; Phillips & Huisman, 2009). As a result, the ecosystems here are a mosaic of habitats of temperate kelp forests and tropical coral gardens and *Sargassum* meadows, making it an ideal location to investigate the possible consequences at ecosystem level of a shift in habitat structure. By conducting a wider ecosystem functioning analysis, we tested whether kelp (cool affinity) and *Sargassum* (warm affinity)-dominated reefs occurring in the same general area support different associated seaweed, invertebrate, coral, and fish assemblages. We also assessed the associated climatic affinity of the communities found in these two habitats to gain insights into the potential downstream effects of a temperate to tropical shift, and the potential for redundancy in functions provided by different foundation species.

## 2 | MATERIALS AND METHODS

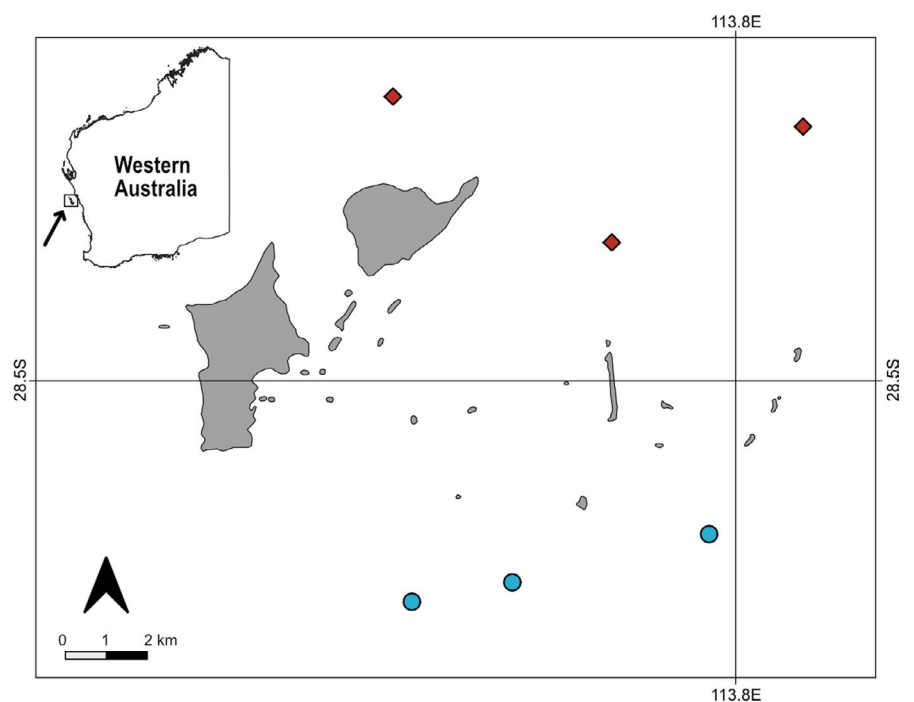
### 2.1 | Site selection

All fieldwork was conducted in October 2019 in the Australasian spring around the Wallabi Island Group of the Houtman Abrolhos archipelago (28°43'S; 113°47'E), in midwestern Western Australia (Figure 1). Potential sites were identified on navigational charts where the reef was between 8 and 12 m of depth and separated by a minimum distance of 2 km from any other site. Six sites were selected based on visual confirmation of desired habitat type (three kelp and three *Sargassum* habitats; hereafter referred to as "Kelp habitat" and "*Sargassum* habitat"). All study sites were located on gradually sloping limestone reefs. While wave exposure data on small spatial scales are not available for this region, the Kelp habitats are more directly exposed to the predominant oceanic swell coming from the southwest. Due to the remoteness of the area, there are no

long-term data available on the benthic seaweed community composition at the site level.

### 2.2 | Sample collection

At all sites, taxonomic groups were sampled sequentially. First, we surveyed fish communities to minimize the effect of diver presence on fish counts, followed by seaweeds, mobile invertebrates, and corals. Fish were sampled using stereo-DOV (Diver Operated Video) surveys. Eight replicate transects of 25 × 5 m (125 m<sup>2</sup>) were sampled at each site. Surveys were conducted in a minimum of 7-m visibility with 10-m separation between each replicate. Transects were conducted by a team of two SCUBA divers, whereby one swam at constant speed along each transect with the stereo-DOV, while the other measured distance with a tape measure. This ensured that the effects of SCUBA diver presence were minimized, with only one diver present with the cameras (Watson & Harvey, 2007). The stereo-DOV system consisted of two GoPro Hero 4 video cameras in underwater housings, mounted 0.7 m apart on an aluminum frame, and converged at 8° to provide a standardized field of view (from 0.5 to 8 m). A complete description of stereo-DOVs including an explanation of how they are configured and calibrated is described by Goetze et al. (2019). Videos were analyzed using the program EventMeasure (Stereo, www.seagis.com.au) for species identification, size (fork length). Biomass was then calculated using estimates based on length–weight relationships obtained from FishBase (Froese & Pauly, 2021). Settings were established to maintain the transect limits and to prevent fish more than 7 m from the camera from being included in the analysis. Fish that were not visible in both cameras were unable to be measured but remained included in the density data if the fish was within the transect boundaries.



**FIGURE 1** Sampling sites at the Wallabi Group of the Houtman Abrolhos archipelago. *Sargassum* habitats are indicated with a red diamond, and Kelp habitats are indicated with a blue circle

Vagrant schooling species were omitted from the analysis to minimize type I errors.

Seaweeds were sampled independently with six 0.25-m<sup>2</sup> quadrats haphazardly placed on the benthos. All seaweed specimens visible to the unaided eye were plucked (taking care to include the holdfast) from the substrate and collected in calico bags. Large seaweeds were sorted on the day of collection and identified to lowest taxonomic level possible. Smaller and harder-to-identify specimens were frozen and identified later in the laboratory. Fresh weight of each species was determined using a digital scale, after removing excess water.

Mobile invertebrates were sampled along five 5-m transects at each site, haphazardly positioned on the reef flat and separated by at least 5 m. For each transect, 0.5 m of the benthos at both sides was examined for invertebrates larger than 10 mm. Encountered specimens were identified to the lowest taxonomic level possible and counted for abundance. Corals were sampled within five 1-m<sup>2</sup> quadrats haphazardly placed on the benthos. All coral colonies visible to the unaided eye were identified to lowest taxonomic level possible and counted for abundance.

## 2.3 | Temperature affinities

All seaweed, invertebrate, coral, and fish species were classified into three temperature affinity categories: “warm affinity,” “cool affinity,” and “cosmopolitan.” Seaweed temperature affinities were determined by known thermal preferences and distribution range for the species (Herbarium, 1998; Huisman, 1997, 2019). Temperature affinities of invertebrate and coral species were determined by known thermal preference. If the temperature affinity was unknown, when the proportion of occurrences was over 25% at a lower latitude than 28.3°S (Atlas of Living Australia, 2020) species were considered of warm affinity, while species that occurred over 75% at a higher latitude than 28.3°S were considered cool. Species that did not show a fit into either affinity based on known preference or distribution were considered cosmopolitan. See Tables S2–S5 for the temperature affinities of species.

## 2.4 | Environmental data

To compare environmental conditions between the two habitat types, satellite-derived long-term temperature and nutrient measurements were sourced from the Integrated Marine Observing System (IMOS) using the “SRS–SST–L3S–6 day–day and night time” single sensor for sea surface temperature (°C) and the “SRS–MODIS–01 day–chlorophyll-a concentration (OC3 model)” sensor for chlorophyll levels (mg m<sup>-3</sup>) (IMOS, 2019). For each site, mean and minimum monthly sea surface temperature (SST) was calculated from available daily means from 1992 through 2019. Chlorophyll concentration of the surface water was used as a proxy for nutrient content (Russell et al., 2005). Mean chlorophyll

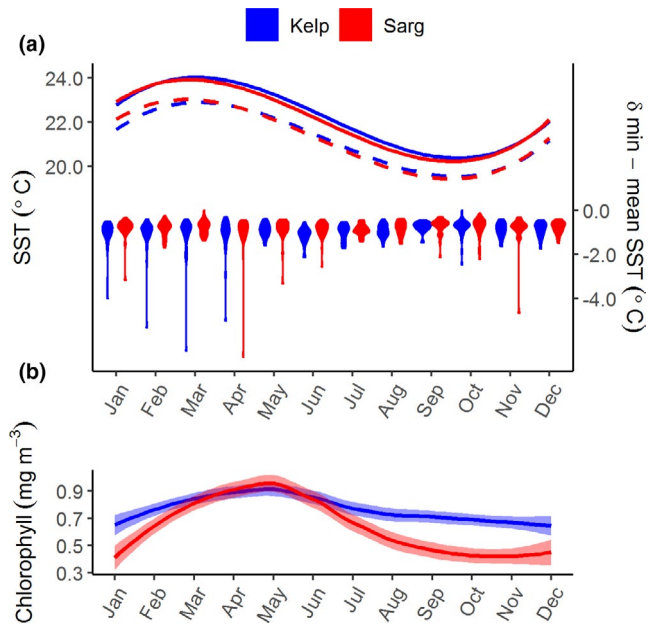
levels were calculated from available daily concentrations from 2002 through 2019.

## 2.5 | Statistical analyses

All statistical analyses were done in R<sub>3.6.2</sub> (R Core Team, 2019). Differences in univariate assemblage attributes between habitats were analyzed by creating generalized linear mixed models (GLMMs) using the “glmer” function from “lme4” package (Bates et al., 2007). For the seaweed models, *E. radiata* and *Sargassum* spp. were included in the analysis in the response variables. All models used Habitat as fixed factor (2 levels: Kelp vs. *Sargassum*) and Site as random effect (3 per habitat), with quadrat/transect nested within Site (8 for fish, 6 for seaweed, and 5 for invertebrate per site). As the data were zero-skewed, richness and abundance count models were fitted using a Poisson distribution and include a logarithmic link function. Biomass models were fitted using a Gamma distribution with an inverse link function. The appropriateness of the fitted models was checked by visually inspecting the residuals using the “ggResidpanel” package. Dissimilarities in community composition between habitats were visualized by principle coordinates analysis (PCO) and analyzed by analysis of similarities (ANOSIM), and similarity percentage (SIMPER) analysis, using the “vegan” package (Oksanen et al., 2010). Abundance data were log-transformed, and the Bray–Curtis dissimilarity of each point was then determined. The first two dimensions were used to plot the PCO, and the ANOSIM performed to determine the similarity of the points between habitats. SIMPER analysis was used to determine which species accounted for the largest amount of dissimilarity between habitats. The top 20 species of fish and seaweeds identified in the SIMPER analysis were classified by thermal affinity. For invertebrates, the species that made up to 98% of the dissimilarity were used, as there were less species compared with seaweeds and fish. A Mann–Whitney *U* test was then performed on the relative abundance of species with warm and cool affinities, comparing the ranks of warm species to the ranks of cool species for each habitat. Probability densities of the fish size were generated using kernel density estimates (KDE) of the pooled samples for each habitat, using a bandwidth 18.11 mm which was determined using Silverman's rule of thumb (Silverman, 1998). Dissimilarities of the size distributions between habitats were then tested using a two-sample Kolmogorov–Smirnov test.

## 3 | RESULTS

On decadal time scales, the average temperature profile for sites for each habitat was nearly identical for ecological purposes (Figure 2), although the Kelp habitat was slightly warmer between March and October ( $F_{1,639} = 4.956$ ,  $p = .026$ ). While minimum temperatures in the between habitats did not differ ( $F_{1,639} = 0.034$ ,  $p = .854$ ), the difference between the mean and minimum temperature was larger in the Kelp habitats ( $F_{1,639} = 5.475$ ,  $p = .020$ ). Chlorophyll content



**FIGURE 2** Seasonal trends in sea surface temperature and pelagic productivity at Houtman Abrolhos archipelago. (a) The average (solid line) and minimum (dashed line) monthly sea surface temperature (SST), and the difference between the average and minimum SST (violin plots; secondary y-axis) between 1992 and 2019 on Kelp (blue) and Sargassum (red) habitats. (b) Differences in seasonal trends in average chlorophyll concentration between Kelp (blue) and Sargassum habitats

indicated both habitats were nutrient poor, although chlorophyll was higher at sites in the Kelp habitat in winter ( $F_{1,301} = 47.099$ ,  $p < .001$ ). Also, see Table S1 for additional details on statistical analysis of environmental data.

There was a clear difference between the Kelp and *Sargassum* habitats for the univariate measures of the seaweed and fish communities (Table 1). In the Kelp habitats, the seaweeds were more diverse (Figure 3a), had higher biomass (Figure 3d), and were characterized by a mixed assemblage of brown and red seaweeds such as *Callophycus oppositifolius*, *Hennedya crispata*, and *Pterocladia lucida*. In contrast, *Sargassum* habitats were largely dominated by a range of *Sargassum* species (92.4% of total biomass), featured a relatively impoverished seaweed understory and epiphytic assemblages (see Table S2 for details). For the invertebrate community, the difference between Kelp and *Sargassum* habitats was less pronounced. While the diversity (Figure 3b) was higher in the *Sargassum* habitats due to a diverse selection of gastropods, there was a higher density in the Kelp habitat (Figure 3e), due to the abundance of the urchin *Centrostephanus tenuispinus*. Fish were more diverse (Figure 3c) and abundant (Figure 3f) in the *Sargassum* habitats. In the Kelp habitat, there was a predominance of wrasses (Labridae), while in the *Sargassum* habitats, there was a more mixed community of wrasses, parrotfish (Scaridae), and damselfish (Pomacentridae). In total, 2521 individual fish from 51 species within 20 families were recorded across all sites. Of those, 45 and 26 species were found within 17 and 9 families in the *Sargassum*

and Kelp habitat, respectively. Thus, only six species within three families were unique to the Kelp habitats.

Comparing the habitats, there was a clear separation between the seaweed communities (ANOSIM:  $R = .921$ ,  $p = .001$ ), a slight separation for the invertebrates (ANOSIM:  $R = .490$ ,  $p = .001$ ), and almost no separation in the fish communities (ANOSIM:  $R = .194$ ,  $p = .001$ ) (Figure 4). Of the 20 species of seaweeds that drove the majority of the dissimilarity between habitats, 80% were only found in one habitat type. For invertebrates, about one-third of the species were found in both habitats. Finally, most fish were present in both habitats, with only four species restricted to a single habitat (Figure 5).

Seaweed species with cool temperature affinities were predominantly found in the Kelp habitats (Figure 5; Mann-Whitney  $U$ :  $U = 41.5$ ,  $p = .026$ ). Similarly, invertebrates with cool affinities were relatively more abundant in the Kelp habitats (Mann-Whitney  $U$ :  $U = 24$ ,  $p = .163$ ), although the lower abundance and richness of invertebrates reduced the confidence in this pattern. There was no discernable pattern in temperature affinity of fish species and their relative abundance in the different habitats (Mann-Whitney  $U$ :  $U = 142$ ,  $p = .556$ ).

For both habitats, the biomass of canopy-forming seaweeds was roughly similar (GLMM;  $t = 0.359$ ,  $p = .720$ ; Figure 6). However, the biomass of understory seaweeds was ~40 times higher in the Kelp habitats (GLMM;  $t = 5.986$ ,  $p < .001$ ) and represented the majority of the total seaweed biomass. The relative amount of biomass of epiphytes to total biomass was low in both habitats, constituting 9.4% and 4.5% of the total biomass in the Kelp and *Sargassum* habitats, respectively.

The biggest dissimilarity between habitats for the mobile invertebrate community was the abundance of the urchin *C. tenuispinus* (SIMPER 48.3%; Table S3). There was a low average density ( $0.05 \pm 0.03$  individuals  $m^{-2}$ ) of *C. tenuispinus* in the *Sargassum* habitats compared with that measured in the Kelp habitats ( $1.19 \pm 0.30$  individuals  $m^{-2}$ ). The highest density at a single site was  $2.16 \pm 0.65$  individuals  $m^{-2}$ . Corals were more abundant (GLMM;  $t = 2.112$ ,  $p = .017$ ) and more diverse (GLMM;  $t = 2.388$ ,  $p < .035$ ) in the *Sargassum* habitat. The most abundant coral found in the Kelp habitats was *Acanthastrea echinata*, which was not encountered in the *Sargassum* habitat (Figure 5).

There were around two times as many herbivorous fish (Figure 7a)—accounting for double the biomass (Figure 7b)—in the *Sargassum* compared with the Kelp habitats. While the count of invertivorous fish was similar in both habitats, the individual size and biomass of invertivores was four times higher in the *Sargassum* habitats. Carnivorous fish had the highest biomass per individual, making up to ~25% and ~12.5% of the total biomass in the Kelp and *Sargassum* habitats, respectively, despite occurring in low numbers in each habitat. The planktivorous fish group showed the lowest individual biomass but occurred in high numbers. The abundance of these planktivores in the *Sargassum* habitats drove a peak in abundance of fish around 60 mm of length (Figure 7c), while in the Kelp habitats, where there were relatively few planktivores, the main size



TABLE 1 The GLMM outputs, testing for differences in univariate community attributes (richness, abundance, and biomass) between Kelp and Sargassum habitats as fixed factors. The four taxonomic groups considered: seaweed, corals, invertebrates, and fish

| Model         | Family  | Link    | DF (Residual DF) | Estimate | SE     | Z value | Pr(> z )        |
|---------------|---------|---------|------------------|----------|--------|---------|-----------------|
| Seaweed       |         |         |                  |          |        |         |                 |
| Richness      | Poisson | Log     | 1 (32)           | 0.6811   | 0.1715 | 3.971   | <b>&lt;.001</b> |
| Biomass       | Gamma   | Inverse | 1 (32)           | 0.0008   | 0.0002 | 4.817   | <b>&lt;.001</b> |
| Epiphyte      | Gamma   | Inverse | 1 (32)           | 0.0248   | 0.0193 | 1.286   | .199            |
| Canopy        | Gamma   | Inverse | 1 (32)           | 0.0004   | 0.0011 | 0.359   | .720            |
| Understorey   | Gamma   | Inverse | 1 (32)           | 0.0476   | 0.0080 | 5.986   | <b>&lt;.001</b> |
| Invertebrates |         |         |                  |          |        |         |                 |
| Richness      | Poisson | Log     | 1 (27)           | 0.4418   | 0.2467 | 1.791   | .073            |
| Abundance     | Poisson | Log     | 1 (27)           | 0.4429   | 0.3018 | 1.467   | .142            |
| Corals        |         |         |                  |          |        |         |                 |
| Richness      | Poisson | Log     | 1 (27)           | 1.8636   | 0.7803 | 2.388   | <b>.017</b>     |
| Abundance     | Poisson | Log     | 1 (27)           | 1.9636   | 0.9297 | 2.112   | <b>.035</b>     |
| Fish          |         |         |                  |          |        |         |                 |
| Richness      | Poisson | Log     | 1 (45)           | 0.4396   | 0.2164 | 2.031   | <b>.042</b>     |
| Abundance     | Poisson | Log     | 1 (45)           | 0.8551   | 0.4972 | 1.720   | .086            |
| Herbivore     | Poisson | Log     | 1 (45)           | 1.1591   | 0.5820 | 1.992   | <b>.046</b>     |
| Invertivore   | Poisson | Log     | 1 (45)           | 0.0145   | 0.3485 | 0.042   | .967            |
| Carnivore     | Poisson | Log     | 1 (45)           | 0.1799   | 0.6595 | 0.273   | .785            |
| Planktivore   | Poisson | Log     | 1 (45)           | 3.0582   | 2.1468 | 1.425   | .154            |
| Biomass       | Gamma   | Inverse | 1 (44)           | 0.3338   | 0.0095 | 35.190  | <b>&lt;.001</b> |
| Herbivore     | Gamma   | Inverse | 1 (44)           | 0.0009   | 0.0016 | 0.563   | .573            |
| Invertivore   | Gamma   | Inverse | 1 (44)           | 0.0010   | 0.0003 | 3.255   | <b>.001</b>     |
| Carnivore     | Gamma   | Inverse | 1 (44)           | 0.0001   | 0.0029 | 0.047   | .962            |
| Planktivore   | Gamma   | Inverse | 1 (44)           | 0.0354   | 0.0331 | 1.069   | .285            |

Bold values indicate statistically significant difference ( $p < .05$ ).

peak was for fish around 100 mm. Altogether, there was a ~40% dissimilarity between the size distribution of fish between habitats (Kolmogorov–Smirnov test,  $D = 0.429$ ,  $p < .001$ ).

## 4 | DISCUSSION

Here, we compared the assemblage structure of seaweed, coral, mobile invertebrate, and fish associated with habitats dominated by the kelp *Ecklonia radiata* and *Sargassum* to understand their functional redundancy and the potential effects of a shift from temperate to tropical habitat providers. The seaweed communities associated with the Kelp habitats were more temperate compared with the *Sargassum* habitats, as there was an overabundance of species with cool temperature affinities. The higher abundance and biomass of seaweeds in the Kelp habitat also suggests it could be more productive (Reed et al., 2008). However, the high abundance of primary producers did not correlate with the abundance of associated fauna. While mobile invertebrate abundance did not differ significantly between habitats, the abundance and biomass of fish was higher in the *Sargassum* habitats. This energy discrepancy could indicate

that either there is a high turnover rate at the lower trophic levels (Stevenson et al., 2007) or secondary production is not limited by primary production within the system. It is possible that there is energy imported from nearby habitats to supplement the autochthonous energy production (Krumhansl & Scheibling, 2012; Vanderklift & Wernberg, 2008) or that fish spend time in the *Sargassum* habitats but forage elsewhere.

Aside from higher biomass, there was also a higher diversity of seaweed species in the Kelp habitat. This was further accentuated by the lack of diversity at genus level in the *Sargassum* habitats, as most species were members of the *Sargassum* genus. Low species richness can result in a low functional diversity (McWilliam et al., 2018). As congeners, the phylogenetic and morphological similarities between *Sargassum* species are expected to result in the provision of similar functions to the ecosystem. The lack of diversity would imply that there is a simplification in the *Sargassum* habitat compared with that of the Kelp, which is reflected in the lower epiphyte and understorey biomass of the seaweed habitat. Despite *Sargassum* normally hosting an abundant assemblage of epiphytes (Jacobucci et al., 2009), *Hypnea* spp. (the main epiphyte recorded) was more abundant in the heterogeneous seaweed community in the Kelp habitat. The abundant

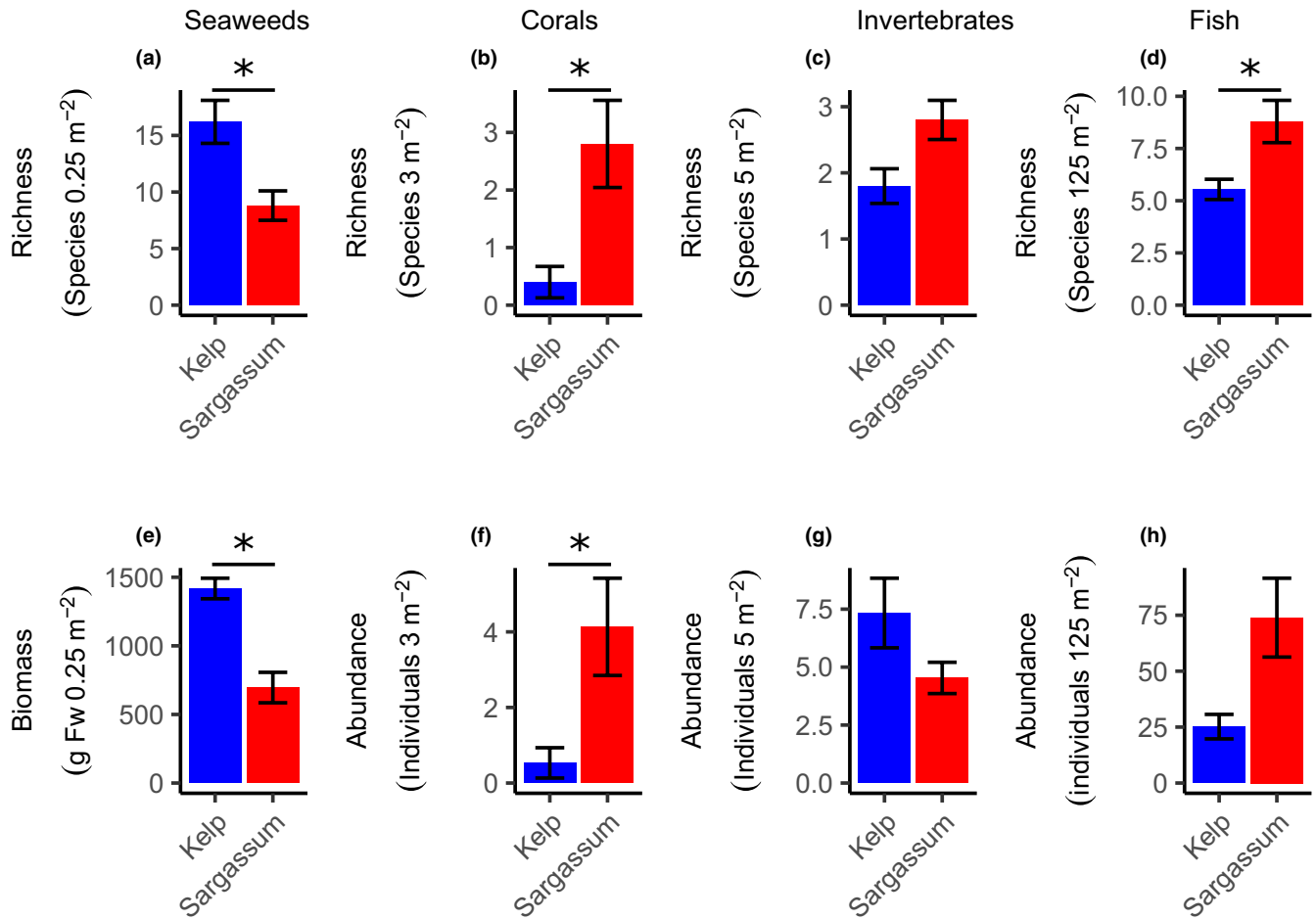


FIGURE 3 Mean species richness and abundance of seaweeds (a, e; including *E. radiata* and *Sargassum* spp.,  $n = 18$  per habitat), corals (b, f;  $n = 15$ ), mobile invertebrates (c, g;  $n = 15$ ), and fish (d, h;  $n = 24$ ), in Kelp (blue) and Sargassum (red) habitats at the Houtman Abrolhos archipelago. Error bars indicate standard error, and asterisk indicates significant difference (GLMM,  $p < .05$ , see Table 1)

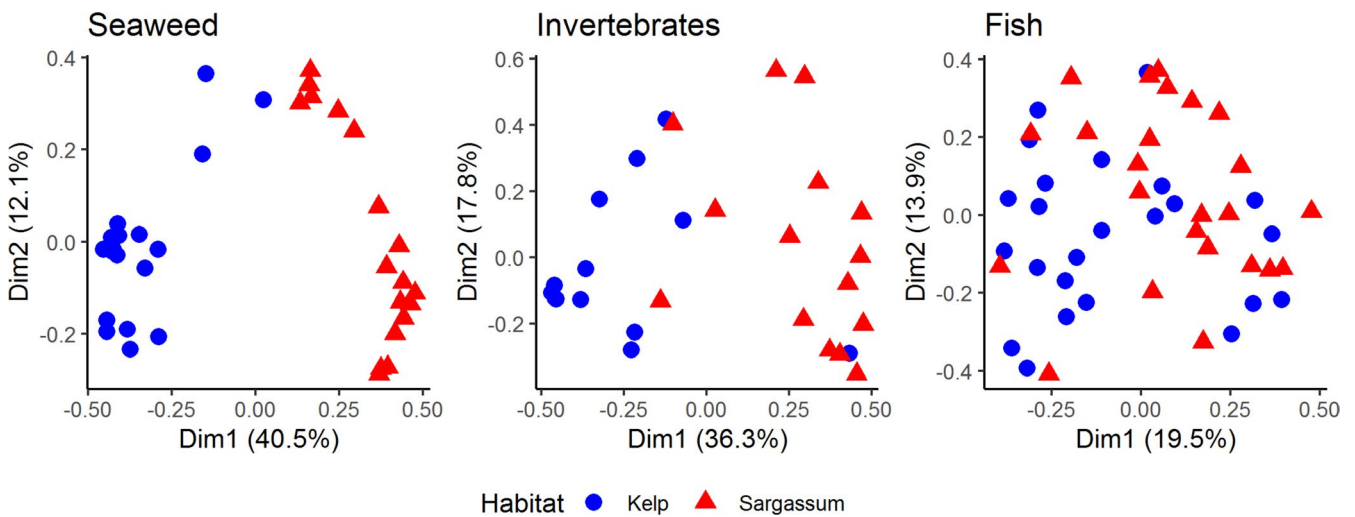
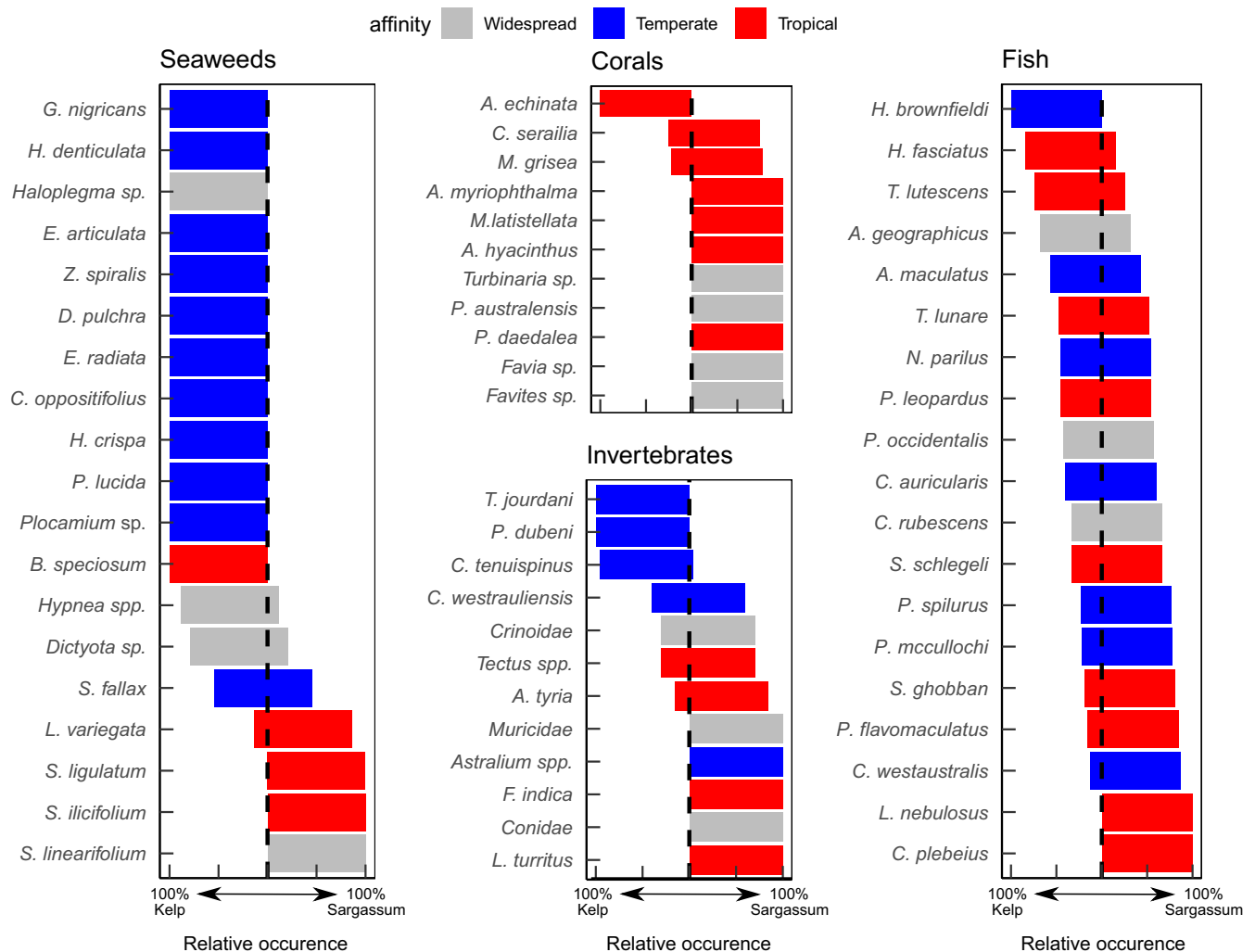


FIGURE 4 PCO of the Bray-Curtis dissimilarities for seaweed biomass (including *Sargassum* spp. and *Ecklonia radiata*,  $n = 18$  per habitat), invertebrate abundance ( $n = 15$ ), and fish abundance ( $n = 24$ ) in the Abrolhos. Data were log-transformed and grouped by Kelp (blue circles) and Sargassum (red triangles) habitats



**FIGURE 5** Relative occurrence between Kelp and Sargassum habitats of the most relevant species (from SIMPER analysis) of seaweeds, corals, mobile invertebrates, and fish in the Arolhos. Warm temperature-associated species are red, cool temperature-associated species are blue, and cosmopolitan species without a clear temperature affinity are gray

understorey seaweeds could be outcompeting corals in the Kelp habitats (Edwards & Connell, 2012), contributing to the lower coral abundance here.

We expected that high biomass of seaweeds would provide more complex habitat and result in higher abundance of associated fish (Stephens et al., 2006; Trebilco et al., 2015). However, our findings show that the lower seaweed biomass *Sargassum* habitats supported more fish, suggesting that the differences between habitats vary as a function of their interaction with the different seaweeds (Beas-Luna et al., 2020). The prevalence of invertivorous fish in these habitats could be indicating that the fish are consuming epifauna more than the seaweeds themselves, and *Sargassum* microhabitats have been reported to harbor more mobile epifauna than kelp (Fraser et al., 2020). Furthermore, it is possible that the structural complexity could be contributing to the low number of small fish counts, as there is more shelter for smaller fish to hide in, and SCUBA divers operating stereo-DOV systems have been found to induce avoidance behavior in fish (Watson & Harvey, 2007), with smaller fish exhibiting stronger predator avoidance behavior (Kulbicki, 1998). Alternatively,

the high abundance of smaller fish could indicate that the *Sargassum* habitats are acting as nurseries for juvenile fish. Tropical seaweed habitats have been found to provide shelter for juvenile fish, which in later life stages live in other seascapes such as the kelp forests, or nearby coral reefs (Fulton et al., 2020). Regardless of the mechanism, these findings suggest both habitats differ somewhat in ecological function in terms of size and number of associated fish.

Despite these differences in invertebrate and fish abundance and body size between habitats, the invertebrate and fish species used both habitats more or less equally, regardless of their thermal affinities. This is consistent with the rapid movement and persistence of tropical herbivores in temperate ecosystems (Vergés, Steinberg, et al., 2014). Additionally, over 75% of the fish species found in the Kelp habitat were also present in the *Sargassum* habitat, suggesting that there is some functional redundancy between habitats. Indeed, a parallel is found in Californian kelp forests, where few fish species are exclusively found in Kelp habitats and not in barrens or other rocky reef habitats (Graham, 2004; Stephens et al., 2006). Alternative to the bottom-up hypothesis of temperature controlling

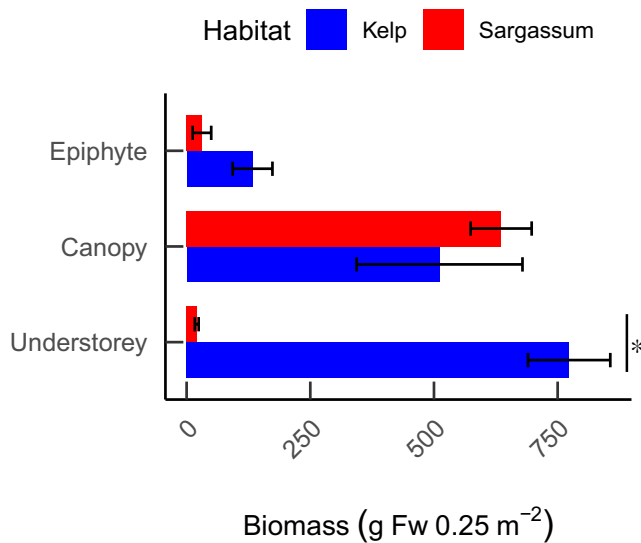


the seaweed distribution, the higher abundance of herbivores (e.g., parrotfish) in the *Sargassum* habitat could be controlling seaweeds top-down. In this alternative hypothesis, temperate seaweeds—which are less resistant to herbivory—are selectively targeted by

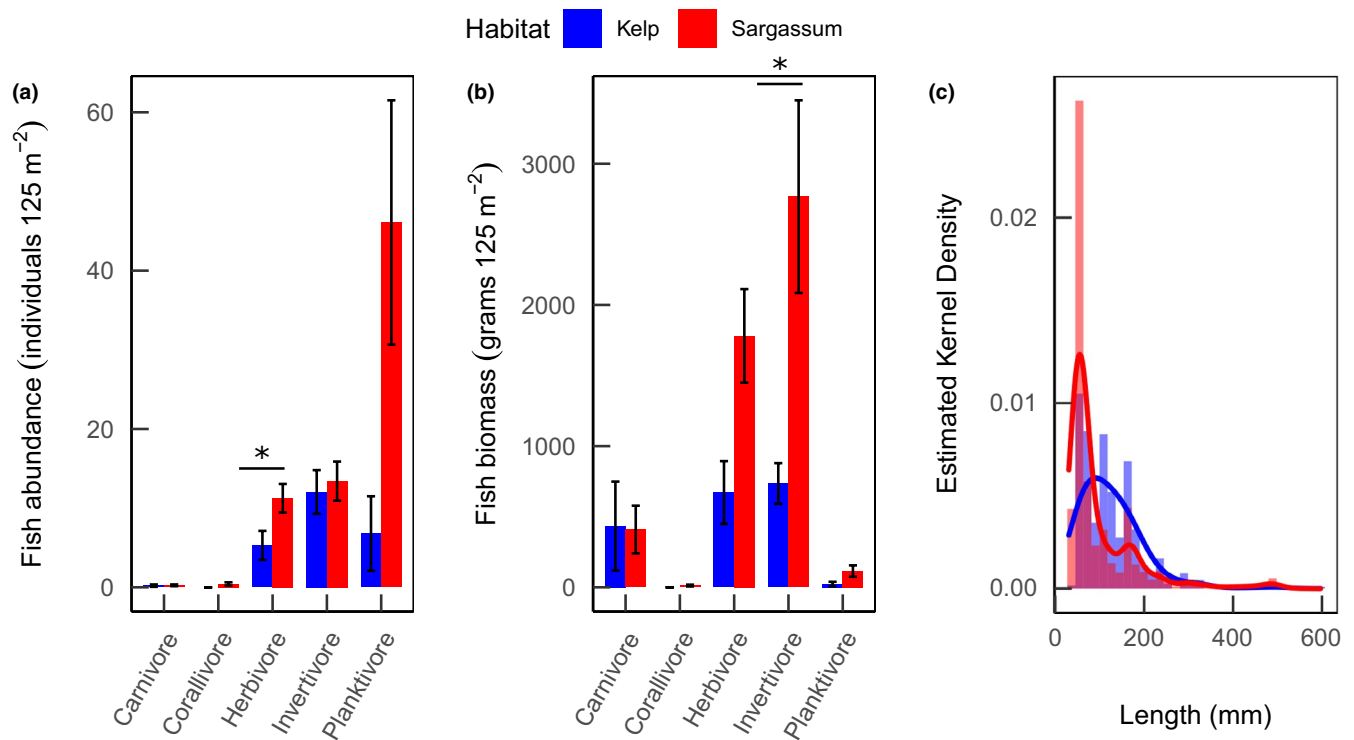
herbivores (Bolser & Hay, 1996), while more unpalatable *Sargassum* species thrive as opportunists due to the competitive release (de Eston & Bussab, 1990).

There was, however, no sign of top-down control by invertebrates in the Kelp habitat, despite high densities of urchin *C. tenuispinus*. A congener of *Centrostephanus rodgersi*, which is responsible for large urchin barrens on the east coast of Australia (Andrew & Underwood, 1989; Ling & Johnson, 2009), *C. tenuispinus* is linked to maintaining a canopy free state on Hall Bank near Marmion, WA (Thomson & Frisch, 2010). Although the densities recorded in the Abrolhos are higher than other locations along the WA, they are still lower than those recorded on Hall Bank (~5 individuals m<sup>-2</sup>) (Thomson & Frisch, 2010), or on the east coast (~2–3 individuals m<sup>-2</sup>) where barrens persist (Andrew & Underwood, 1989; Ling & Johnson, 2009).

Despite the similarities in temperature profiles, the seaweeds in each habitat showed a discrete separation of temperature affinity, with cool-affinity species found in the Kelp habitat. The higher variability in sea temperatures measured in the Kelp habitat suggests that there are short sporadic cooling events occurring at these sites, which could be allowing the temperate seaweeds to thrive here (Pearce, 1997). Specifically, in contrast to *Sargassum*, *E. radiata* is more sensitive to consistently elevated temperatures and has higher survival at variable temperatures even if higher (Straub et al., 2021). Despite the suppression of upwelling by the Leeuwin Current (Twomey et al., 2007), sporadic localized upwelling can occur under the right circumstances, and there are



**FIGURE 6** Mean seaweed biomass in different layers of the canopy in the Kelp (blue) and *Sargassum* (red) habitats in the Abrolhos. Error bars indicate standard error,  $n = 18$  per habitat, and vertical line with asterisk indicates significant difference (GLMM,  $p < .05$ , see Table 1)



**FIGURE 7** The abundance (a) and biomass (b) of different trophic guilds of fish, and kernel density of the length of fish individuals (c) in Kelp (blue) and *Sargassum* (red) habitats in the Abrolhos. Error bars indicate standard error, and asterisk indicates significant difference (GLMM,  $p < .05$ , see Table 1)

more upwelling days per year in the Abrolhos compared with the rest of the WA coast (Rossi et al., 2013). This local upwelling could also act as a vector for propagule dispersal from more deeper, cooler seaweed communities and bringing more diversity (Giraldo-Ospina et al., 2021). Alternatively, the large amplitude internal waves (LAIW) may reduce the heat stress on shallow subtidal ecosystems (Reid et al., 2019). During the 2010–2011 MHW in the Eastern Indian Ocean, corals at LAIW-exposed sites were less impacted than those on sheltered sites (Schmidt et al., 2016). The higher chlorophyll concentration in the Kelp habitat could be possible through either mechanism.

One of the main limitations of this study is the lack of temporal data. All sampling was done during a single season (Australasian Spring) and therefore does not account for phenological differences between *Sargassum* with an annual life cycle, and more perennial species such as *E. radiata*. While seasonal changes in, for example, biomass and life stage are relevant in *E. radiata* (De Bettignies et al., 2013; Wernberg & Goldberg, 2008), the relative differences between seasons in *Sargassum* can be an order of magnitude larger (Marks et al., 2018). As such, our findings do not account for expected seasonal changes or succession cycles within any of the communities (Fulton et al., 2014; Wilson et al., 2014). The low total seaweed biomass and low epiphyte biomass seen in the *Sargassum* habitat could be indicative of a young canopy, which makes the difference between habitats appear larger than it would when averaged out over a full year. Therefore, this study is strongest when viewed as a cross-sectional community analysis of characteristic temperate versus tropical seaweed habitats in which these differences in phenology are inherent. Due to the remoteness of the investigated area, small-scale anthropogenic influences are expected to be minimal, and the findings represent mainly the effects of the more pervasive direct and indirect effects of changes in canopy structure, for example, due to warming oceans.

We conclude that shifts from one to another foundation seaweed will impact the associated flora and fauna within these habitats. Using the presented temperate kelp forests to more tropical *Sargassum* meadows, in a space-for-time substitution model, indicates that increasingly warming oceans could result in a reduction of seaweed abundance and diversity, but a promotion of fish abundance and diversity at progressively higher latitudes. The discreteness found in the temperature affinity was restricted to the seaweeds and was not found in the mobile invertebrates or fish communities, suggesting tropical seaweed habitats provide a degree of functional redundancy to temperate-affinity associated fauna. The lack of temporal data makes it difficult to discern whether the kelp forest and *Sargassum* meadows in the Abrolhos are two coexisting steady states, or whether the *Sargassum* dominance is the result of a gradual shift away from kelp forests. However, these shifts from temperate to tropical habitats are occurring along the WA coast, and are expected to continue as global warming keeps intensifying. Our results suggest that, while there will be marked changes in overall community structure, many temperate fauna could persist following a shift from kelp to *Sargassum*-dominated habitats.

## ACKNOWLEDGMENTS

This study was funded by grants from the Winifred V. Scott Estate and the Australian Research Council (DP170100023, DE1901006192). We thank the crew of Keshi Mer for great board and technical assistance.

## AUTHOR CONTRIBUTION

**Yannick Mulders:** Conceptualization (lead); Data curation (lead); Formal analysis (lead); Funding acquisition (lead); Investigation (lead); Methodology (equal); Project administration (lead); Writing – original draft (lead); Writing – review & editing (supporting). **Karen Filbee-Dexter:** Conceptualization (supporting); Data curation (supporting); Formal analysis (supporting); Methodology (equal); Writing – original draft (supporting); Writing – review & editing (lead). **Sahira Bell:** Data curation (supporting); Formal analysis (supporting); Methodology (supporting); Writing – review & editing (supporting). **Nestor E. Bosch:** Data curation (supporting); Formal analysis (supporting); Methodology (supporting); Software (supporting); Writing – review & editing (supporting). **Albert Pessarrodona:** Data curation (supporting); Methodology (supporting); Writing – review & editing (supporting). **Defne Sahin:** Data curation (supporting); Formal analysis (supporting); Methodology (supporting); Validation (supporting); Writing – review & editing (supporting). **Sofie Vranken:** Conceptualization (supporting); Data curation (supporting); Writing – review & editing (supporting). **Salvador Zarco-Perello:** Data curation (supporting); Writing – review & editing (supporting). **Thomas Wernberg:** Conceptualization (supporting); Data curation (supporting); Investigation (supporting); Methodology (equal); Supervision (lead); Validation (lead); Writing – review & editing (lead).

## DATA AVAILABILITY STATEMENT

All satellite data are available from IMOS through the AODN portal: <https://portal.aodn.org.au/>.

## ORCID

Yannick Mulders  <https://orcid.org/0000-0002-4879-4773>

Karen Filbee-Dexter  <https://orcid.org/0000-0001-8413-6797>

Sahira Bell  <https://orcid.org/0000-0001-9237-7507>

Nestor E. Bosch  <https://orcid.org/0000-0003-0421-8456>

Albert Pessarrodona  <https://orcid.org/0000-0002-6057-9937>

Defne Sahin  <https://orcid.org/0000-0002-8848-5457>

Sofie Vranken  <https://orcid.org/0000-0002-8459-041X>

Salvador Zarco-Perello  <https://orcid.org/0000-0001-9435-8545>

Thomas Wernberg  <https://orcid.org/0000-0003-1185-9745>

## REFERENCES

- Agostini, S., Harvey, B. P., Wada, S., Kon, K., Milazzo, M., Inaba, K., & Hall-Spencer, J. M. (2018). Ocean acidification drives community shifts towards simplified non-calcified habitats in a subtropical-temperate transition zone. *Scientific Reports*, 8, 11354. <https://doi.org/10.1038/s41598-018-29251-7>
- Andrew, N. L., & Underwood, A. J. (1989). Patterns of abundance of the sea urchin *Centrostephanus rodgersii* (Agassiz) on the central coast of New South Wales, Australia. *Journal of*

- Experimental Marine Biology and Ecology*, 131, 61–80. [https://doi.org/10.1016/0022-0981\(89\)90011-7](https://doi.org/10.1016/0022-0981(89)90011-7)
- Assis, J., Tyberghein, L., Bosch, S., Verbruggen, H., Serrão, E. A., De Clerck, O., & Tittensor, D. (2018). Bio-ORACLE v2.0: Extending marine data layers for bioclimatic modelling. *Global Ecology and Biogeography*, 27, 277–284. <https://doi.org/10.1111/geb.12693>
- Atlas of Living Australia. (2020). <http://www.ala.org.au>
- Bates, D., Sarkar, D., Bates, M. D., & Matrix, L. (2007). *The lme4 package*. R package version 2:74.
- Beas-Luna, R., Micheli, F., Woodson, C. B., Carr, M., Malone, D., Torre, J., Boch, C., Caselle, J. E., Edwards, M., Freiwald, J., Hamilton, S. L., Hernandez, A., Konar, B., Kroeker, K. J., Lorda, J., Montaña-Moctezuma, G., & Torres-Moye, G. (2020). Geographic variation in responses of kelp forest communities of the California Current to recent climatic changes. *Global Change Biology*, 26, 6457–6473. <https://doi.org/10.1111/gcb.15273>
- Beaugrand, G., Edwards, M., Brander, K., Luczak, C., & Ibanez, F. (2008). Causes and projections of abrupt climate-driven ecosystem shifts in the North Atlantic. *Ecology Letters*, 11, 1157–1168. <https://doi.org/10.1111/j.1461-0248.2008.01218.x>
- Blowes, S. A., Supp, S. R., Antão, L. H., Bates, A., Bruelheide, H., Chase, J. M., Moyes, F., Magurran, A., McGill, B., Myers-Smith, I. H., Winter, M., Bjorkman, A. D., Bowler, D. E., Byrnes, J. E. K., Gonzalez, A., Hines, J., Isbell, F., Jones, H. P., Navarro, L. M., ... Dornelas, M. (2019). The geography of biodiversity change in marine and terrestrial assemblages. *Science*, 366, 339–345. <https://doi.org/10.1126/science.aaw1620>
- Bolser, R. C., & Hay, M. E. (1996). Are tropical plants better defended? Palatability and defenses of temperate vs. tropical seaweeds. *Ecology*, 77, 2269–2286. <https://doi.org/10.2307/2265730>
- Cavanaugh, K. C., Reed, D. C., Bell, T. W., Castorani, M. C. N., & Beas-Luna, R. (2019). Spatial variability in the resistance and resilience of giant kelp in Southern and Baja California to a multiyear heatwave. *Frontiers in Marine Science*, 6, 413. <https://doi.org/10.3389/fmars.2019.00413>
- Chen, I.-C., Hill, J. K., Ohlemüller, R., Roy, D. B., & Thomas, C. D. (2011). Rapid range shifts of species associated with high levels of climate warming. *Science*, 333, 1024–1026. <https://doi.org/10.1126/science.1206432>
- Cheung, W. W. L., Lam, V. W. Y., Sarmiento, J. L., Kearney, K., Watson, R., & Pauly, D. (2009). Projecting global marine biodiversity impacts under climate change scenarios. *Fish and Fisheries*, 10, 235–251. <https://doi.org/10.1111/j.1467-2979.2008.00315.x>
- De Bettignies, T., Wernberg, T., Lavery, P., Vanderklift, M., & Moring, M. (2013). Contrasting mechanisms of dislodgement and erosion contribute to production of kelp detritus. *Limnology and Oceanography*, 58, 1680–1688. <https://doi.org/10.4319/lo.2013.58.5.1680>
- de Eston, V. R., & Bussab, W. O. (1990). An experimental analysis of ecological dominance in a rocky subtidal macroalgal community. *Journal of Experimental Marine Biology and Ecology*, 136, 179–195. [https://doi.org/10.1016/0022-0981\(90\)90160-E](https://doi.org/10.1016/0022-0981(90)90160-E)
- Edwards, M. S., & Connell, S. D. (2012). Competition, a major factor structuring seaweed communities. In C. Wiencke & K. Bischof (Eds.), *Seaweed biology. Ecological studies* (pp. 135–156). Springer Berlin Heidelberg.
- Engelen, A. H., Espirito-Santo, C., Simões, T., Monteiro, C., Serrão, E. A., Pearson, G. A., & Santos, R. O. P. (2008). Periodicity of propagule expulsion and settlement in the competing native and invasive brown seaweeds, *Cystoseira humilis* and *Sargassum muticum* (Phaeophyta). *European Journal of Phycology*, 43, 275–282.
- Filbee-Dexter, K., Feehan, C. J., & Scheibling, R. E. (2016). Large-scale degradation of a kelp ecosystem in an ocean warming hotspot. *Marine Ecology Progress Series*, 543, 141–152. <https://doi.org/10.3354/meps11554>
- Filbee-Dexter, K., & Wernberg, T. (2018). Rise of turfs: A new battlefront for globally declining kelp forests. *BioScience*, 68, 64–76. <https://doi.org/10.1093/biosci/bix147>
- Fraser, K., Stuart-Smith, R., Ling, S., Heather, F., & Edgar, G. (2020). Taxonomic composition of mobile epifaunal invertebrate assemblages on diverse benthic microhabitats from temperate to tropical reefs. *Marine Ecology Progress Series*, 640, 31–43.
- Free, C. M., Thorson, J. T., Pinsky, M. L., Oken, K. L., Wiedenmann, J., & Jensen, O. P. (2019). Impacts of historical warming on marine fisheries production. *Science*, 363, 979–983. <https://doi.org/10.1126/science.aau1758>
- Froese, R., & Pauly, D. (2021). *FishBase*. <https://www.fishbase.org/>
- Fulton, C. J., Berkström, C., Wilson, S. K., Abesamis, R. A., Bradley, M., Åkerlund, C., Barrett, L. T., Bucol, A. A., Chacin, D. H., Chong-Seng, K. M., Coker, D. J., Depczynski, M., Eggertsen, L., Eggertsen, M., Ellis, D., Evans, R. D., Graham, N. A. J., Hoey, A. S., Holmes, T. H., ... Tinkler, P. (2020). Macroalgal meadow habitats support fish and fisheries in diverse tropical seascapes. *Fish and Fisheries*, 21, 700–717. <https://doi.org/10.1111/faf.12455>
- Fulton, C. J., Depczynski, M., Holmes, T. H., Noble, M. M., Radford, B., Wernberg, T., & Wilson, S. K. (2014). Sea temperature shapes seasonal fluctuations in seaweed biomass within the Ningaloo coral reef ecosystem. *Limnology and Oceanography*, 59, 156–166. <https://doi.org/10.4319/lo.2014.59.1.0156>
- Gilman, S. E., Urban, M. C., Tewksbury, J., Gilchrist, G. W., & Holt, R. D. (2010). A framework for community interactions under climate change. *Trends in Ecology & Evolution*, 25, 325–331. <https://doi.org/10.1016/j.tree.2010.03.002>
- Giraldo-Ospina, A., Kendrick, G. A., & Hovey, R. K. (2021). Reproductive output, synchrony across depth and influence of source depth in the development of early life stages of kelp. *Journal of Phycology*, 57, 311–323. <https://doi.org/10.1111/jpy.13095>
- Goetze, J. S., Bond, T., McLean, D. L., Saunders, B. J., Langlois, T. J., Lindfield, S., Fullwood, L. A. F., Driessen, D., Shedrawi, G., & Harvey, E. S. (2019). A field and video analysis guide for diver operated stereo-video. *Methods in Ecology and Evolution*, 10, 1083–1090. <https://doi.org/10.1111/2041-210X.13189>
- Graham, M. (2004). Effects of local deforestation on the diversity and structure of Southern California giant kelp forest food webs. *Ecosystems*, 7, 341–357. <https://doi.org/10.1007/s10021-003-0245-6>
- Hastings, R. A., Rutterford, L. A., Freer, J. J., Collins, R. A., Simpson, S. D., & Genner, M. J. (2020). Climate change drives poleward increases and equatorward declines in marine species. *Current Biology*, 30, 1572–1577.e2. <https://doi.org/10.1016/j.cub.2020.02.043>
- Herbarium, W. A. (1998). *FloraBase-The Western Australian flora*. Department of Environment and Conservation.
- Huisman, J. M. (1997). Marine benthic algae of the Houtman Abrolhos Islands, Western Australia. In F. E. Wells (Ed.), *The marine flora and fauna of Houtman Abrolhos Islands, Western Australia: Proceedings of the seventh International Marine Biological Workshop held at Beacon Island, Houtman Abrolhos Islands in May 1994* (pp. 177–237). Western Australian Museum.
- Huisman, J. M. (2019). *Marine plants of Australia*. University of Western Australia Press in association with Australian Biological Resources Study.
- Hutchins, J. B., & Pearce, A. F. (1994). Influence of the Leeuwin Current on recruitment of tropical reef fishes at Rottneest Island, Western Australia. *Bulletin of Marine Science*, 54, 245–255.
- Hyndes, G. A., Heck, K. L., Vergés, A., Harvey, E. S., Kendrick, G. A., Lavery, P. S., McMahon, K., Orth, R. J., Pearce, A., Vanderklift, M., Wernberg, T., Whiting, S., & Wilson, S. (2016). Accelerating tropicalization and the transformation of temperate seagrass meadows. *BioScience*, 66, 938–948. <https://doi.org/10.1093/biosci/biw111>

- IMOS (2019). *SRS - SST - L3S - Single sensor - 6 day - Day and night time - Australia*. <http://imos.aodn.org.au>
- Jacobucci, G. B., Tanaka, M. O., & Leite, F. P. P. (2009). Temporal variation of amphipod assemblages associated with *Sargassum filipendula* (Phaeophyta) and its epiphytes in a subtropical shore. *Aquatic Ecology*, 43, 1031–1040. <https://doi.org/10.1007/s10452-009-9230-2>
- Jones, M. C., & Cheung, W. W. L. (2015). Multi-model ensemble projections of climate change effects on global marine biodiversity. *ICES Journal of Marine Science*, 72, 741–752. <https://doi.org/10.1093/icesjms/fsu172>
- Krumhansl, K. A., & Scheibling, R. E. (2012). Production and fate of kelp detritus. *Marine Ecology Progress Series*, 467, 281–302. <https://doi.org/10.3354/meps09940>
- Kulbicki, M. (1998). How the acquired behaviour of commercial reef fishes may influence the results obtained from visual censuses. *Journal of Experimental Marine Biology and Ecology*, 222, 11–30. [https://doi.org/10.1016/S0022-0981\(97\)00133-0](https://doi.org/10.1016/S0022-0981(97)00133-0)
- Ling, S. D., Ibbott, S., & Sanderson, J. C. (2010). Recovery of canopy-forming macroalgae following removal of the enigmatic grazing sea urchin *Heliocidaris erythrogramma*. *Journal of Experimental Marine Biology and Ecology*, 395, 135–146. <https://doi.org/10.1016/j.jembe.2010.08.027>
- Ling, S., & Johnson, C. (2009). Population dynamics of an ecologically important range-extender: Kelp beds versus sea urchin barrens. *Marine Ecology Progress Series*, 374, 113–125. <https://doi.org/10.3354/meps07729>
- Lonhart, S. I., Jeppesen, R., Beas-Luna, R., Crooks, J. A., & Lorda, J. (2019). Shifts in the distribution and abundance of coastal marine species along the eastern Pacific Ocean during marine heatwaves from 2013 to 2018. *Marine Biodiversity Records*, 12, 13. <https://doi.org/10.1186/s41200-019-0171-8>
- Marks, L., Reed, D., & Holbrook, S. (2018). Life history traits of the invasive seaweed *Sargassum horneri* at Santa Catalina Island, California. *Aquatic Invasions*, 13, 339–350. <https://doi.org/10.3391/ai.2018.13.3.03>
- Martínez, B., Radford, B., Thomsen, M. S., Connell, S. D., Carreño, F., Bradshaw, C. J. A., Fordham, D. A., Russell, B. D., Gurgel, C. F. D., & Wernberg, T. (2018). Distribution models predict large contractions of habitat-forming seaweeds in response to ocean warming. *Diversity and Distributions*, 24, 1350–1366. <https://doi.org/10.1111/ddi.12767>
- McWilliam, M., Hoogenboom, M. O., Baird, A. H., Kuo, C.-Y., Madin, J. S., & Hughes, T. P. (2018). Biogeographical disparity in the functional diversity and redundancy of corals. *Proceedings of the National Academy of Sciences of the United States of America*, 115, 3084–3089. <https://doi.org/10.1073/pnas.1716643115>
- Molinos, J., Halpern, B., Schoeman, D., Brown, C., Kiessling, W., Moore, P., Pandolfi, J., Poloczanska, E., Richardson, A., & Burrows, M. (2015). Climate velocity and the future global redistribution of marine biodiversity. *Nature Climate Change*, 6, 83–88.
- Mulders, Y., & Wernberg, T. (2020). Fifteen years in a global warming hotspot: Changes in subtidal mobile invertebrate communities. *Marine Ecology Progress Series*, 656, 227–238. <https://doi.org/10.3354/meps13567>
- Norderhaug, K., Filbee-Dexter, K., Freitas, C., Birkely, S., Christensen, L., Møllerud, I., Thormar, J., van Son, T., Moy, F., Vázquez Alonso, M., & Steen, H. (2020). Ecosystem-level effects of large-scale disturbance in kelp forests. *Marine Ecology Progress Series*, 656, 163–180. <https://doi.org/10.3354/meps13426>
- Oksanen, J., Blanchet, F. G., Kindt, R., Legendre, P., O'hara, R. B., Simpson, G. L., Solymos, P., Stevens, M. H. H., & Wagner, H. (2010). *Vegan: Community ecology package*. R package version 1.17-4. URL <http://CRAN.R-project.org/package=vegan>
- Pearce, A. F. (1997). *The Leeuwin Current and the Houtman Abrolhos Islands*. Western Australian Museum.
- Pecl, G. T., Araújo, M. B., Bell, J. D., Blanchard, J., Bonebrake, T. C., Chen, I.-C., Clark, T. D., Colwell, R. K., Danielsen, F., Evengård, B., Falconi, L., Ferrier, S., Frusher, S., Garcia, R. A., Griffis, R. B., Hobday, A. J., Janion-Scheepers, C., Jarzyna, M. A., Jennings, S., ... Williams, S. E. (2017). Biodiversity redistribution under climate change: Impacts on ecosystems and human well-being. *Science*, 355(6332), 1–9. <https://doi.org/10.1126/science.aai9214>
- Perry, A., Low, P., Ellis, J., & Reynolds, J. (2005). Climate change and distribution shifts in marine fishes. *Science*, 308, 1912–1915. <https://doi.org/10.1126/science.1111322>
- Pessarrodona, A., Foggo, A., & Smale, D. A. (2019). Can ecosystem functioning be maintained despite climate-driven shifts in species composition? Insights from novel marine forests. *Journal of Ecology*, 107, 91–104. <https://doi.org/10.1111/1365-2745.13053>
- Phillips, J. C., & Huisman, J. M. (2009). Influence of the Leeuwin Current on the marine flora of the Houtman Abrolhos. *Journal of the Royal Society of Western Australia*, 92, 139–146.
- Pinsky, M. L., Selden, R. L., & Kitchel, Z. J. (2020). Climate-driven shifts in marine species ranges: Scaling from organisms to communities. *Annual Review of Marine Science*, 12, 153–179. <https://doi.org/10.1146/annurev-marine-010419-010916>
- Poloczanska, E., Brown, C., Sydeman, W., Kiessling, W., Schoeman, D., Moore, P., Brander, K., Bruno, J., Buckley, L., Burrows, M., Duarte, C., Halpern, B., Holding, J., Kappel, C., O'Connor, M., Pandolfi, J., Parmesan, C., Schwing, F., Thompson, S., & Richardson, A. (2013). Global imprint of climate change on marine life. *Nature Climate Change*, 3, 919–925. <https://doi.org/10.1038/nclimate1958>
- Price, N., Muko, S., Legendre, L., Steneck, R., van Oppen, M., Albright, R., Ang, P. Jr, Carpenter, R., Chui, A., Fan, T., Gates, R., Harii, S., Kitano, H., Kurihara, H., Mitarai, S., Padilla-Gamiño, J., Sakai, K., Suzuki, G., & Edmunds, P. (2019). Global biogeography of coral recruitment: Tropical decline and subtropical increase. *Marine Ecology Progress Series*, 621, 1–17. <https://doi.org/10.3354/meps12980>
- R Core Team. (2019). *R: A language and environment for statistical computing*. R Foundation for Statistical Computing. <https://www.R-project.org/>
- Reed, D. C., Rassweiler, A., & Arkema, K. K. (2008). Biomass rather than growth rate determines variation in net primary production by giant kelp. *Ecology*, 89, 2493–2505. <https://doi.org/10.1890/07-1106.1>
- Reid, E. C., DeCarlo, T. M., Cohen, A. L., Wong, G. T. F., Lentz, S. J., Safaie, A., Hall, A., & Davis, K. A. (2019). Internal waves influence the thermal and nutrient environment on a shallow coral reef. *Limnology and Oceanography*, 64, 1949–1965. <https://doi.org/10.1002/lno.11162>
- Richards, Z., Kirkendale, L., Moore, G., Hosie, A., Huisman, J., Bryce, M., Marsh, L., Bryce, C., Hara, A., Wilson, N., Morrison, S., Gomez, O., Ritchie, J., Whisson, C., Allen, M., Betteridge, L., Wood, C., Morrison, H., Salotti, M., ... Fromont, J. (2016). Marine biodiversity in temperate Western Australia: Multi-taxon surveys of Minden and Roe Reefs. *Diversity*, 8, 7. <https://doi.org/10.3390/d8020007>
- Rogers-Bennett, L., & Catton, C. A. (2019). Marine heat wave and multiple stressors tip bull kelp forest to sea urchin barrens. *Scientific Reports*, 9, 15050. <https://doi.org/10.1038/s41598-019-51114-y>
- Rossi, V., Feng, M., Pattiaratchi, C., Roughan, M., & Waite, A. M. (2013). On the factors influencing the development of sporadic upwelling in the Leeuwin Current system. *Journal of Geophysical Research, C: Oceans*, 118, 3608–3621. <https://doi.org/10.1002/jgrc.20242>
- Russell, B. D., Elsdon, T. S., Gillanders, B. M., & Connell, S. D. (2005). Nutrients increase epiphyte loads: broad-scale observations and an experimental assessment. *Marine Biology*, 147, 551–558. <https://doi.org/10.1007/s00227-005-1571-3>
- Schmidt, G. M., Wall, M., Taylor, M., Jantzen, C., & Richter, C. (2016). Large-amplitude internal waves sustain coral health during thermal stress. *Coral Reefs*, 35, 869–881. <https://doi.org/10.1007/s00338-016-1450-z>
- Schweiger, O., Settele, J., Kudrna, O., Klotz, S., & Kühn, I. (2008). Climate change can cause spatial mismatch of trophically interacting species. *Ecology*, 89, 3472–3479. <https://doi.org/10.1890/07-1748.1>



- Serisawa, Y., Imoto, Z., Ishikawa, T., & Ohno, M. (2004). Decline of *Ecklonia cava* population associated with increased seawater temperatures in Tosa Bay, southern Japan. *Fisheries Science*, 70, 189–191.
- Silverman, B. W. (1998). *Density estimation for statistics and data analysis* (pp. 1–176). Routledge. <https://doi.org/10.1201/9781315140919>
- Smale, D. A., Wernberg, T., Oliver, E. C. J., Thomsen, M., Harvey, B. P., Straub, S. C., Burrows, M. T., Alexander, L. V., Benthuyzen, J. A., Donat, M. G., Feng, M., Hobday, A. J., Holbrook, N. J., Perkins-Kirkpatrick, S. E., Scannell, H. A., Sen Gupta, A., Payne, B. L., & Moore, P. J. (2019). Marine heatwaves threaten global biodiversity and the provision of ecosystem services. *Nature Climate Change*, 9, 306–312. <https://doi.org/10.1038/s41558-019-0412-1>
- Stephens, J. S. Jr, Larson, R. J., & Pondella, D. J. II (2006). Rocky reefs and kelp beds. In L. G. Allen, D. J. Pondella, & M. H. Horn (Eds.), *The ecology of marine fishes: California and adjacent waters* (pp. 227–252). University of California Press.
- Stevenson, C., Katz, L. S., Micheli, F., Block, B., Heiman, K. W., Perle, C., Weng, K., Dunbar, R., & Witting, J. (2007). High apex predator biomass on remote Pacific islands. *Coral Reefs*, 26, 47–51. <https://doi.org/10.1007/s00338-006-0158-x>
- Straub, S. C., Wernberg, T., Marzinelli, E. M., Vergés, A., Kelaher, B. P., & Coleman, M. A. (2021). Persistence of seaweed forests in the anthropocene will depend on warming and marine heatwave profiles. *Journal of Phycology*. <https://doi.org/10.1111/jpy.13222>
- Stuart-Smith, R. D., Edgar, G. J., & Bates, A. E. (2017). Thermal limits to the geographic distributions of shallow-water marine species. *Nature Ecology & Evolution*, 1, 1846–1852. <https://doi.org/10.1038/s41559-017-0353-x>
- Teagle, H., Hawkins, S. J., Moore, P. J., & Smale, D. A. (2017). The role of kelp species as biogenic habitat formers in coastal marine ecosystems. *Journal of Experimental Marine Biology and Ecology*, 492, 81–98. <https://doi.org/10.1016/j.jembe.2017.01.017>
- Thiault, L., Mora, C., Cinner, J. E., Cheung, W. W. L., Graham, N. A. J., Januchowski-Hartley, F. A., Mouillot, D., Sumaila, U. R., & Claudet, J. (2019). Escaping the perfect storm of simultaneous climate change impacts on agriculture and marine fisheries. *Science Advances*, 5, eaaw9976. <https://doi.org/10.1126/sciadv.aaw9976>
- Thomsen, M. S., Mondardini, L., Alestra, T., Gerrity, S., Tait, L., South, P. M., Lilley, S. A., & Schiel, D. R. (2019). Local extinction of Bull Kelp (*Durvillaea* spp.) due to a marine heatwave. *Frontiers in Marine Science*, 6, 84.
- Thomson, D., & Frisch, A. (2010). Extraordinarily high coral cover on a nearshore, high-latitude reef in south-west Australia. *Coral Reefs*, 29, 923–927. <https://doi.org/10.1007/s00338-010-0650-1>
- Trebilco, R., Dulvy, N. K., Stewart, H., & Salomon, A. K. (2015). The role of habitat complexity in shaping the size structure of a temperate reef fish community. *Marine Ecology Progress Series*, 532, 197–211. <https://doi.org/10.3354/meps11330>
- Tuckett, C. A., de Bettignies, T., Fromont, J., & Wernberg, T. (2017). Expansion of corals on temperate reefs: Direct and indirect effects of marine heatwaves. *Coral Reefs*, 36, 947–956. <https://doi.org/10.1007/s00338-017-1586-5>
- Twomey, L. J., Waite, A. M., Pez, V., & Pattiaratchi, C. B. (2007). Variability in nitrogen uptake and fixation in the oligotrophic waters off the south west coast of Australia. *Deep Sea Research Part II: Topical Studies in Oceanography*, 54, 925–942. <https://doi.org/10.1016/j.dsr2.2006.10.001>
- Urban, M. C., Tewksbury, J. J., & Sheldon, K. S. (2012). On a collision course: Competition and dispersal differences create no-analogue communities and cause extinctions during climate change. *Proceedings of the Royal Society B: Biological Sciences*, 279, 2072–2080. <https://doi.org/10.1098/rspb.2011.2367>
- Van der Putten, W. H., Macel, M., & Visser, M. E. (2010). Predicting species distribution and abundance responses to climate change: why it is essential to include biotic interactions across trophic levels. *Philosophical Transactions of the Royal Society of London. Series B, Biological Sciences*, 365, 2025–2034. <https://doi.org/10.1098/rstb.2010.0037>
- Vanderklift, M. A., & Wernberg, T. (2008). Detached kelps from distant sources are a food subsidy for sea urchins. *Oecologia*, 157, 327–335. <https://doi.org/10.1007/s00442-008-1061-7>
- Vergés, A., McCosker, E., Mayer-Pinto, M., Coleman, M. A., Wernberg, T., Ainsworth, T., & Steinberg, P. D. (2019). Tropicalisation of temperate reefs: Implications for ecosystem functions and management actions. *Functional Ecology*, 33, 1000–1013. <https://doi.org/10.1111/1365-2435.13310>
- Vergés, A., Steinberg, P., Hay, M., Poore, A., Campbell, A., Ballesteros, E., Heck, K. Jr, Booth, D., Coleman, M., Feary, D., Figueira, W., Langlois, T., Marzinelli, E., Mizerek, T., Mumby, P., Nakamura, Y., Roughan, M., van Sebille, E., Sen Gupta, A., ... Wilson, S. (2014). The tropicalization of temperate marine ecosystems: Climate-mediated changes in herbivory and community phase shifts. *Proc Biol Sci*, 281, 20140846. <https://doi.org/10.1098/rspb.2014.0846>
- Vergés, A., Tomas, F., Cebrian, E., Ballesteros, E., Kizilkaya, Z., Dendrinis, P., Karamanlidis, A. A., Spiegel, D., & Sala, E. (2014). Tropical rabbitfish and the deforestation of a warming temperate sea. *Journal of Ecology*, 102, 1518–1527. <https://doi.org/10.1111/1365-2745.12324>
- Watson, D. L., & Harvey, E. S. (2007). Behaviour of temperate and subtropical reef fishes towards a stationary SCUBA diver. *Marine and Freshwater Behaviour and Physiology*, 40, 85–103. <https://doi.org/10.1080/10236240701393263>
- Wernberg, T., Bennett, S., Babcock, R., de Bettignies, T., Cure, K., Depczynski, M., Dufois, F., Fromont, J., Fulton, C., Hovey, R., Harvey, E., Holmes, T., Kendrick, G., Radford, B., Santana-Garcon, J., Saunders, B., Smale, D., Thomsen, M., Tuckett, C., ... Wilson, S. (2016). Climate-driven regime shift of a temperate marine ecosystem. *Science*, 353, 169–172. <https://doi.org/10.1126/science.aad8745>
- Wernberg, T., de Bettignies, T., Joy, B. A., & Finnegan, P. M. (2016). Physiological responses of habitat-forming seaweeds to increasing temperatures. *Limnology and Oceanography*, 61, 2180–2190. <https://doi.org/10.1002/lno.10362>
- Wernberg, T., & Goldberg, N. (2008). Short-term temporal dynamics of algal species in a subtidal kelp bed in relation to changes in environmental conditions and canopy biomass. *Estuarine, Coastal and Shelf Science*, 76, 265–272. <https://doi.org/10.1016/j.ecss.2007.07.008>
- Wernberg, T., Krumhansl, K., Filbee-Dexter, K., & Pedersen, M. (2019). Status and trends for the world's kelp forests. In C. Sheppard (Eds.), *World seas: An environmental evaluation* (pp. 57–78). Elsevier.
- Wernberg, T., Russell, B., Thomsen, M., Gurgel, F., Bradshaw, C., Poloczanska, E., & Connell, S. (2011). Seaweed communities in retreat from ocean warming. *Current Biology*, 21, 1828–1832. <https://doi.org/10.1016/j.cub.2011.09.028>
- Wernberg, T., Smale, D., Tuya, F., Thomsen, M., Langlois, T., de Bettignies, T., Bennett, S., & Rousseaux, C. (2012). An extreme climatic event alters marine ecosystem structure in a global biodiversity hotspot. *Nature Climate Change*, 3, 78–82. <https://doi.org/10.1038/nclimate1627>
- Williams, J. W., Jackson, S. T., & Kutzbach, J. E. (2007). Projected distributions of novel and disappearing climates by 2100 AD. *Proceedings of the National Academy of Sciences of the United States of America*, 104, 5738–5742. <https://doi.org/10.1073/pnas.0606292104>
- Wilson, K. L., Skinner, M. A., & Lotze, H. K. (2019). Projected 21st-century distribution of canopy-forming seaweeds in the Northwest Atlantic with climate change. *Diversity and Distributions*, 25, 582–602. <https://doi.org/10.1111/ddi.12897>
- Wilson, S. K., Fulton, C. J., Depczynski, M., Holmes, T. H., Noble, M. M., Radford, B., & Tinkler, P. (2014). Seasonal changes in

habitat structure underpin shifts in macroalgae-associated tropical fish communities. *Marine Biology*, 161, 2597–2607. <https://doi.org/10.1007/s00227-014-2531-6>

Zarco-Perello, S., Wernberg, T., Langlois, T. J., & Vanderklift, M. A. (2017). Tropicalization strengthens consumer pressure on habitat-forming seaweeds. *Scientific Reports*, 7, 820. <https://doi.org/10.1038/s41598-017-00991-2>

#### SUPPORTING INFORMATION

Additional supporting information may be found in the online version of the article at the publisher's website.

**How to cite this article:** Mulders, Y., Filbee-Dexter, K., Bell, S., Bosch, N. E., Pessarrodona, A., Sahin, D., Vranken, S., Zarco-Perello, S., & Wernberg, T. (2022). Intergrading reef communities across discrete seaweed habitats in a temperate–tropical transition zone: Lessons for species reshuffling in a warming ocean. *Ecology and Evolution*, 12, e8538. <https://doi.org/10.1002/ece3.8538>