


# Dose Dependent Effects of *Breynia cernua* Against the Paraquat Induced Parkinsonism like Symptoms in Animals' Model: *In Vitro*, *In Vivo* and Mechanistic Studies

Dose-Response:  
An International Journal  
July-September 2022:1-16  
© The Author(s) 2022  
Article reuse guidelines:  
[sagepub.com/journals-permissions](https://sagepub.com/journals-permissions)  
DOI: 10.1177/15593258221125478  
[journals.sagepub.com/home/dos](https://journals.sagepub.com/home/dos)  


Malik Saadullah<sup>1</sup>, Sania Arif<sup>1</sup>, Liaqat Hussain<sup>2</sup> , Muhammad Asif<sup>3</sup>, and Umair Khurshid<sup>4</sup>

## Abstract

The aims and objectives of the study were to evaluate the antiParkinson's (PD) potential of *B cernua* (BCE). *B cernua* (Poir.) Müll. Arg. (*B cernua*) is a member of the *Phyllanthaceae* family. HPLC revealed the presence of various phytochemicals. Study was conducted for 40 days. After PD induction by paraquat behavioural studies were carried out. Biochemical parameters such as DPPH, NO-scavenging, Ferrous reducing power, MDA, GSH, CAT, SOD, acetylcholinesterase (AChE), neurotransmitter estimation and TNF- $\alpha$  and IL-6 levels were determined. DPPH, NO-scavenging and Ferrous reducing power assays showed 78.02%, 48.05% and 71.45% inhibitions, respectively. There was significant improvement in motor functions and coordination in a dose-dependent manner (50 < 250 < 500 mg/kg) in PD rat model. Biochemical markers; SOD, CAT, GPx and GSH showed significant restoration ( $P < .001$ ) while MDA showed significant decrease ( $P < .05$ ). The AChE level was significantly reduced ( $P < .05$ ) at 500 mg/kg while neurotransmitters were significantly improved ( $P < .001$ ) in a dose-dependent fashion. The ELISA results showed significant ( $P < .001$ ) down-regulation of IL-6 and TNF- $\alpha$  level. In conclusion, it is suggested that BCE has the potential to reduce the symptoms of PD.

## Keywords

*Breynia cernua*, *phyllanthaceae*, Parkinson's disease, paraquat, glycosides, saponins

## Introduction

Parkinson disease (PD) is an age-dependent neurodegenerative disorder, characterized by increasing extrapyramidal motor dysfunctions caused by selective depletion of dopamine in striatum and substantia nigra pars compacta region.<sup>1</sup> The pathogenesis of PD is influenced by protein aggregation, excitotoxicity, inflammation and inhibition of mitochondrial complex-1. PD is characterized by motor function abnormality, involuntary facial movement, protruding tongue, dyskinesia and akinesia, etc.<sup>2,3</sup> Dopamine levels in basal ganglia and caudate are reduced, which leads to pathological conditions (inclusions of intracellular lewy bodies, neuronal degeneration and depigmentation). Oxidative stress plays a main role in the aetiology and progression of PD.<sup>4</sup> Dopamine is an unstable chemical that easily undergoes auto-oxidation in the cytoplasm. Any alteration that increases cytoplasmic

<sup>1</sup> Department of Pharmaceutical Chemistry, Faculty of Pharmaceutical Sciences, Government College University, Faisalabad, Pakistan

<sup>2</sup> Department of Pharmacology, Faculty of Pharmaceutical Sciences, Government College University, Faisalabad, Pakistan

<sup>3</sup> Department of Pharmacology, Faculty of Pharmacy, The Islamia University of Bahawalpur, Pakistan

<sup>4</sup> Department of Pharmaceutical Chemistry, Faculty of Pharmacy, The Islamia University of Bahawalpur, Pakistan

## Corresponding Authors:

Liaqat Hussain, Department of Pharmacology, Faculty of Pharmaceutical Sciences, Government College University, Allama Iqbal Road, Faisalabad 38000, Pakistan.

Email: [liaqat.hussain@gcuf.edu.pk](mailto:liaqat.hussain@gcuf.edu.pk)

Malik Saadullah, Department of Pharmaceutical Chemistry, Faculty of Pharmaceutical Sciences, Government College University, Allama Iqbal Road, Faisalabad 38000, Pakistan.

Email: [maliksaadullah@gcuf.edu.pk](mailto:maliksaadullah@gcuf.edu.pk)



Creative Commons Non Commercial CC BY-NC: This article is distributed under the terms of the Creative Commons Attribution-NonCommercial 4.0 License (<https://creativecommons.org/licenses/by-nc/4.0/>) which permits non-commercial use, reproduction and distribution of the work without further permission provided the original work is attributed as specified on the SAGE

and Open Access pages (<https://us.sagepub.com/en-us/nam/open-access-at-sage>).

dopamine can also increase dopamine autoxidation, reactive oxygen species (ROS) production, and ultimately the development of Parkinson's disease (PD).<sup>5</sup>

Mitochondrial dysfunction increases the ROS. This causes oxidative stress and damage proteins, lipids, and DNA and reduces the glutathione (antioxidant) level. Oxidative stress causes lewy body protein aggregation,  $\alpha$ -synuclein aggregation and protein degradation (characteristic of PD).<sup>6</sup> General mitochondrial stress mechanism is mentioned in Figure 1.

Treatments that currently available are levodopa, carbidopa, dopamine agonist, etc., can reverse the PD symptoms by enhancing dopamine neurotransmission, but no effect on disease progression and the chronic administration also causes hypertension, depression, ulcer and various more toxicities.<sup>7</sup> Therefore, it is necessary to find out novel therapeutic option that not only provide symptomatic relief but also slows down the progression of the disease.

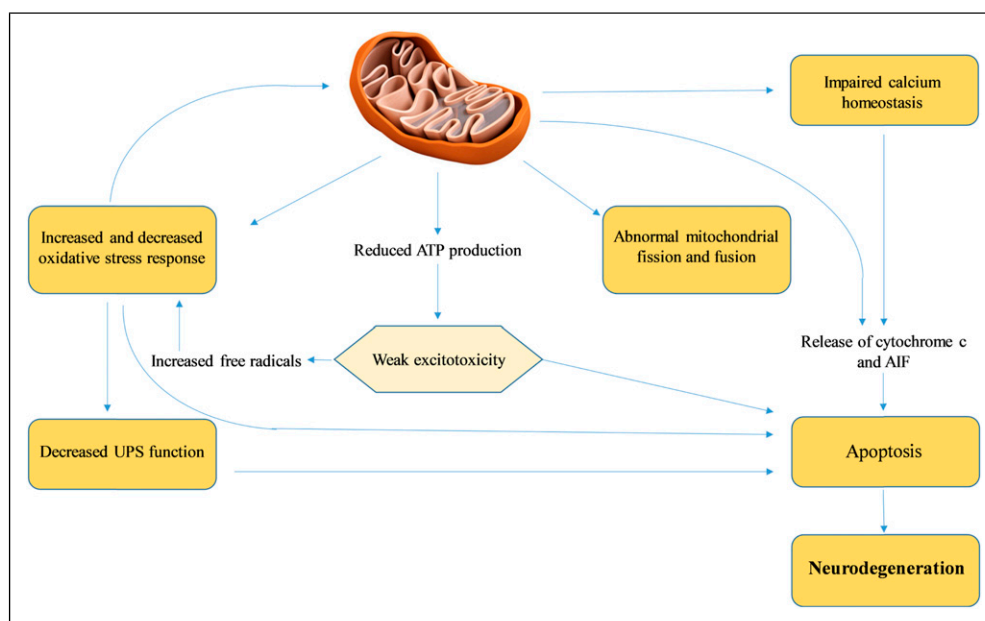
Exposure to herbicides, pesticides and heavy metals may have increased incidence of PD in humans, according to epidemiological research. PQ<sup>2+</sup>, N, N'-dimethyl-4-4'-bipyridinium (Paraquat; PQ) is one such environmental toxin. It is a divalent cation, converted to a monovalent cation by redox cycling with cellular diaphorases (NADPH oxidase and nitric oxide synthase). Superoxide radical is produced as a result of this redox cycle, resulting in oxidative stress-related cytotoxicity.<sup>8</sup> The reactive O<sub>2</sub><sup>-</sup> triggers a well-known chain of events that produces various ROS, including hydrogen peroxide (H<sub>2</sub>O<sub>2</sub>) and the hydroxyl radical (OH<sup>-</sup>). These ROS promote mitochondrial malfunction, which gradually triggers

the death of dopaminergic neurons. It is believed that this procedure triggers the development of PD.<sup>9</sup> PQ causes particular neurodegeneration in the substantia nigra region, enters the CNS by neutral amino acid transporter.<sup>10</sup>

Natural compounds originating from plants serve an essential part in human health maintenance. With the advancement of research on more scientific grounds and progress in naturopathy, there is increased use of natural products from organic origin.<sup>11-15</sup> *Breynia* species are primarily distributed in Vietnam, Australia, Malaysia and some areas of India.<sup>16</sup> The majority of *Phyllanthaceae* family plants are shrubs, herbs or trees, few of them are climbers and one species is aquatic.<sup>17</sup> Traditionally, the plants of this genus are used for the treatment of haemorrhages, tonsillitis, malaria, fevers, dysentery, cough, inflammation, diabetes, cancer, kidney disorders and skin disorders.

Phytochemical screening of *B. cernua* shows that it contains secondary metabolites in the form of glycosides, alkaloids, hydrocarbons, triterpenoids, flavonoids, saponins, tannins and sterol.<sup>18,19</sup> Metals such as Cl, K, Mg and Ca in high percentage and Cr, Fe, Co and Ni in lower percentage, indicated elemental concentrations in different cellular structures of plant.<sup>20</sup> Traditionally used for the treatment of swollen legs, sores, ulcers, body pains, coughs, dysentery, malaria and diarrhoeal complications. *B. cernua* shows broad spectrum of antimicrobial activity, and the n-hexane fraction of *B. cernua* shows cytotoxicity against MCF-7 breast cancer cells.<sup>18</sup>

The genus *Breynia* has gained significance for medicinal use since it contains secondary metabolites such as glycosides,



**Figure 1.** Mitochondrial stress mechanisms: Parkinson disease has been associated with aberrant mitochondrial morphology, poor metabolic function and defective fission-fusion balance. Increased reactive oxygen species diminished the ubiquitin-proteasomal system function. When intracellular calcium levels rise as a result of excitotoxicity, mitochondria also sequesters calcium. Impaired mitochondrial ATP production decreases the threshold for ecotoxicity. Cell death is the result of cytochrome c and other 'pro-apoptotic factors', including apoptosis initiating factor, being released by the mitochondria into the cytoplasm, causes neurodegeneration.

lignins, steroids, terpenoids, alkaloids, nucleosides, tannins and phenolic compounds. *B. cernua* phytochemicals are least reported with their medicinal uses against CNS disorders. Therefore, this research was designed to authenticate the existence of valuable compounds in *B. cernua* extract holding neuroprotective potential. Until now, the neuropharmacological effects of *B. cernua* are not well documented in previous literature. *B. cernua* extract was further investigated in paraquat induced PD animal model after Fourier transform infrared spectroscopy (FTIR) and HPLC analysis and estimation of in-vitro antioxidant assays.

## Material and Methods

### Plant Collection and Extraction

*B. cernua* was collected from Lahore (from a nursery). Washed with water, separated the aerial parts from root and dried under shade for 15 days. Extraction was done by simple maceration technique. In 2000 mL of ethanol 700 g of plant material was suspended, allowed to stand for 3 days at room temperature with infrequent shaking, every day filtered the material with Whatman filter paper. After 3 days, menstruum was placed in rotatory evaporator. Percentage yield was calculated by using following formula

$$\% \text{ Yield} = \frac{\text{Dry weight of extract}}{\text{Dry weight of plant material}} \times 100$$

### Phytochemical Analysis

The phytochemical analysis of *B. cernua* ariel part extract to determine the reducing sugars, proteins, fats, saponins, steroidal glycosides, tannins, anthraquinone glycosides, resins and alkaloids were performed by following previously described methods.<sup>21</sup>

### FTIR Analysis

The plant extract was used for the qualitative analysis by FTIR fingerprinting. One mg of *B. cernua* extract was combined with 100 mg of KBr and ground into a fine powder. This powder was added to a die, which was then compacted into a disc using a hydraulic press. From the disc, FTIR spectrum was obtained at 4000–400 cm<sup>-1</sup>. This method was repeated 3 times, with peaks in various places compared to standard organic compound peaks.

### HPLC

A .45 µm Millex-HV PVDF (Millipore, New Bedford, MA, USA) membrane was used to filter the sample. Using an analytical column (Phenomenex® ODS 100 A 250 mm × 4.60 mm, 5 µm) accompanied by a C18 guard column (2.0 cm

4.0 mm; 5 m), HPLC analysis was carried out on a Shimadzu chromatographer outfitted with a ternary pump (Shimadzu LC-20AT) and diode array detector (Shimadzu SPD-M20A, Kyoto, Japan). Data processing was carried out using LC solutions software (version 1.25). Acetonitrile and water were used as the mobile phase in a gradient chromatography procedure, with the initial acetonitrile/water ratio being 2:8 v/v and the final acetonitrile/water ratio being 8:2 v/v at 1 mL/min flow rate over the course of 30 min with 25°C column temperature and 20 µL injection volume. Every day, the mobile phase was prepared and sonicated to remove gas before usage. The UV spectra were observed between 450 and 200 nm. All of the standard solutions and extracts were made with ethanol. The concentration of the solution chemical was 2000 g/mL, whereas the reference solutions were employed in 6 different concentrations (12.5, 25.0, 100.0, 150.0, 250.0, and 500.0 g/mL).<sup>22</sup>

### In Vitro Antioxidant Activity

**DDPH scavenging, ferrous reducing power and NO-scavenging assays.** The antioxidant potential of ethanol extract of *B. cernua* was determined by DPPH radical scavenging assay suggested by Sultan, Bhatti and Iqbal<sup>23</sup> Ferrous reducing power assay as described by Yen, Duh and Chuang<sup>24</sup> and NO-scavenging activity as described by Francis M. Awah and Andrew W. Verla.<sup>25</sup> Dose inhibitory curve and IC50 value was calculated by using Graph Pad Prism software version 8.0.2.

**Total phenolic content.** Total phenolic content (TPC) of *Breynia cernua* (BCE) was calculated by following procedure: .5 mL of GC (in 5 mL of DW (distilled water) .05 g of extract), Folin-ciocalteu reagent (.5 mL) and DW (7.5 mL) were added in a falcon tube, placed at 25°C for 10 min. After 10 min, 20% of Na<sub>2</sub>CO<sub>3</sub> (1.5 mL) is added, place the solution in dark for 40 min and absorbance was recorded at 725 nm. To construct the standard curve, Gallic acid is used. Total phenolic content was measured as GAE (Gallic acid equivalent), results are expressed in mg/kg of extract<sup>13</sup>

$$\text{Total phenolics} = \frac{\text{Gallic acid equivalent} \times \text{extract volume}}{\text{sample (g)}}$$

**Total flavonoid content.** Total flavonoid content was measured by using quercetin as standard (standard curve at 10–130 ppm). For this method, .5 mL of GC solution kept at room temperature for 5 min. Then .6 mL of 10% AlCl<sub>3</sub> (Aluminium chloride) were added in the tube and wait for 5 min by keeping at room temperature. After that 1 M NaOH (sodium hydroxide) (2 mL) was added in above solution, 2.4 mL of DW was added for making a final volume. At 510 nm, absorbance was calculated by using spectrophotometer. TFC was measured as quercetin equivalent (CE)<sup>26</sup>

$$\text{Total flavonoids} = \frac{\text{Quercetin equivalent} \times \text{extract volume}}{\text{sample (g)}}$$

## Antiparkinsonian Activity

### Experimental Study Design

A total of 30 healthy male (5 in each group) Wistar rats, weight about  $150 \text{ g} \pm 10 \text{ g}$  were chosen for the experiment. All animals were placed in separate cages under conventional laboratory temperature and humidity settings, with easy food and water access. Animals are used in the study according to the (guide for the Care and use of Laboratory Animals 8<sup>th</sup> edition) published by National Research Council. Approval was obtained by Ethical Review Committee of Government College University, Faisalabad, Pakistan. Animals were randomly grouped into following groups, such as:

1. Group 1: Negative control (NC) treated with vehicle orally.
2. Group 2: Standard L-Dopa + 10 mg/kg paraquat orally.
3. Group 3: Disease control (DC) 10 mg/kg paraquat orally.
4. Group 4: BCE 50 mg/kg + 10 mg/kg paraquat orally.
5. Group 5: BCE 250 mg/kg + 10 mg/kg paraquat orally.
6. Group 6: BCE 500 mg/kg + 10 mg/kg paraquat orally.

Literature shows that Paraquat (PQ) has a strong effect on brain functioning by forming the ROS in the brain. The disease was confirmed by motor incoordination and few extrapyramidal symptoms, such as stiff muscle, tremors and abnormal facial movements. This confirms the PD for the evaluation of study.<sup>27,28</sup> This detail is also added in the manuscript. The doses were prepared in sterilized saline solution. Study was conducted for 40 days. At the beginning and end of the experiment, behavioural and physical evaluations were conducted. After behavioural experiments, by cervical dislocation animals were euthanized. Whole brains of the experimental animals were collected and washed with phosphate buffer solution (PBS) and preserved at temperature  $-80^{\circ}\text{C}$ .

### Behavioural Studies

**Open field test.** In this experiment, animal mobility, exploration and anxiety were simultaneously examined. It was constructed of plywood and had walls that were 36 cm thick

and measured 72 cm by 72 cm, look like a white painted hollow square chamber, divided the floor into 16 squares. Animals were handled by tail and placed at the centre of chamber and observed (total distance travelled and total line crossed) for 10 min, after each trial apparatus was rinsed with methanol. In 10 min, first 5 min were given to rat to move freely and after 5 min time spend in central area, postures, defecation, freezing, rearing, grooming and stretches attend were observed.<sup>29</sup>

**Wire hanging test.** This test was performed for measurement of neuromuscular stretches. Apparatus was set as described by Tillerson and Miller 2003.<sup>30</sup> It is a non-invasive, affordable and straight forward tool for assessing rodents' grip strength and neuromuscular coordination. Rats were trained to hold the wire prior to the experiment. After that rats were placed on wire and measured the latency time (falling down from wire to surface in seconds) for 120 seconds. The hanging time of the animals is used to compare results with BCE-treated groups since animals with PD symptoms have inadequate neuromuscular power.<sup>31</sup>

**Hole board test.** In animals, this test is used to assess anxiety, stress, neophilia and emotionality. Apparatus is made from Plexiglas material having  $25 \times 25 \times 30 \text{ cm}$  high walls, 16 equidistant holes at floor and hole board apparatus was positioned 1.5 m high. Total number of head dipping were calculated for 8 min.<sup>30</sup>

**Y maze test.** This test aimed to determine short-term memory, cognitive and spatial memory deficiencies in rats. The apparatus has 3 arms ( $35 \times 25 \times 10 \text{ cm}$  triangular central area) attached at  $120^{\circ}$  in the shape of Y. Rats were positioned at the arm's one end, and number of entries in each arm were recorded for 8 min to determine spontaneous alterations. The following formula was used to calculate the amount of spontaneous alterations<sup>32</sup>

$$\text{Spontaneous alteration}\% = \frac{\text{total no. of Trials}}{\text{Total no. of entries}} \times 100$$

**Elevated plus-maze test.** In mouse models of CNS diseases, the anxiety related behaviours are assessed by this test. Two closed arms (oppositely positioned) of  $50 \times 40 \times 10 \text{ cm}$  dimension, two open arms (oppositely positioned) with  $50 \times 10 \text{ cm}$  dimension, and central area of  $10 \times 10 \text{ cm}$  dimension make up this '+'-shaped maze that is elevated above the ground. Rat was positioned at one end of an open arm and transfer latency (time taken by animal to move from open arm to closed arm) were noted.<sup>33</sup>

**Histopathological analysis.** The animals were euthanized according to the guidelines as already described. sacrificed. The cerebellum and hippocampus area of brain were isolated and stored in PBS after being rinsed with ice-cold normal saline. Slides were prepared by haematoxylin and eosin staining and observed under microscope at 10X magnification.

### Estimation of Biochemical Markers

**Brain homogenate preparation.** For the preparation of brain homogenate, small pieces of brain tissue were sliced and placed in a falcon tube, and then 10 X volumes of phosphate buffer (.1 mmol/L having pH 7.4) was added into it. Homogenised with homogenizer, then centrifuged at 6000 r/min for 10 min. Separated the supernatant, and by using the isolated supernatant, antioxidant enzymes were determined.<sup>31</sup>

**Estimation of glutathione reduced activity.** In homogenate (1 mL) 10% of trichloroacetic acid (TCA) (1 mL), .1 M phosphate buffer (pH 7.4) (4 mL) and DTNB (prepared by dissolving 29.78 mg in 25 mL of methanol) (.5 mL) was added in a falcon tube. At 412 nm absorbance was calculated, the following formula was used for the determination of GSH level

$$\text{GSH} = \frac{Y - 0.00314}{0.0314} \times \frac{\text{DF}}{\text{BT} \times \text{Vu}}$$

BT (tissue homogenate), Vu (volume of aliquots), Y (absorbance), DF (dilution factor i-e., 1).<sup>31</sup>

**Estimation of glutathione peroxidase activity.** In .1 mL of brain homogenate, .2 mL of sodium azide, .2 mL of EDTA and .2 mL of H<sub>2</sub>O<sub>2</sub> were added in falcon's tube. After few minutes, reaction was stopped by adding TCA, and then centrifuged for 10 min at 2000 r/min. Supernatant was separated and merged with disodium hydrogen phosphate (4 mL) and DTNB (.5 mL). At 420 nm, absorbance was measured.<sup>29</sup>

**Estimation of superoxide dismutase activity.** In brain homogenate (.1 mL), .05 M sodium phosphate buffer (pH 8.3) (1.2 mL), nitro blue tetrazolium (.3 mL), phenazine methosulfate (.1 mL) and triton X (.2 mL) were added in a falcon's tube. Then incubated for 90 min at 30°C. After that, for the termination of chemical reaction, glacial acetic acid was added. Then with constant stirring 4 mL of n-butanol was added, allowed to stand for 10 min and centrifuged at 1000 r/min for 10 min. Supernatant was separated and at 560 nm absorbance was calculated. By using following formula, superoxide dismutase (SOD) level was calculated<sup>29</sup>

$$Y = 0.0095x + 0.1939$$

**Estimation of catalases activity.** In brain homogenate (50 µL), 50 mM phosphate buffer (pH 7.4) (1.95 mL) and 30 mM H<sub>2</sub>O<sub>2</sub> (1 mL) were added in a falcon's tube. Optical density was

noted at 240 nm, CAT activity was determined by using the following formula

$$\text{CAT activity} = \frac{\delta\text{O.D}}{E \times \text{volume of sample (mL)} \times \text{mg of protein}}$$

E (extinction coefficient of H<sub>2</sub>O<sub>2</sub>) is .071 mmol/cm and  $\delta\text{O.D}$  (absorbance shift per minute).<sup>29</sup>

**Estimation of malondialdehyde activity.** In brain homogenate (.2 mL), sodium dodecyl sulphate (8.1%) (.2 mL), .8% TBA (1.5 mL) and 20% acetic acid (1.5 mL) were mixed and transferred into DW (4 mL). Then on water bath at 100°C the mixture was heated for 60 min, cooled and blended with n-butanol (5 mL) and DW (1 mL). Wait for the appearance of yellow colour, yellow colour appeared after 120 min; then for 10 min the solution was centrifuged at 4000 r/min, and overlying top later was separated and at 532 nm absorbance was measured.<sup>29</sup> By using following formula Malondialdehyde (MDA) level was calculated

$$\text{MDA} = Y \times 100 \times \text{Vt} / 1.56 \times 10^5 \times \text{Wt} \times \text{Vu}$$

Vt (total volume of assay mixture), Vu (volume of aliquots), Y (absorbance at 532 nm),  $1.56 \times 10^5$  (molar extinction coefficient) and Wt (weight of brain).<sup>31</sup>

**Estimation of AChE activity.** In a falcon tube, phosphate buffer (pH 8.0) (2.6 mL), DTNB (.1 mL) and acetylthiocholine iodide (20 µl) were added. An aliquot of tissue homogenate (.4 mL) was added to the reaction mixture. Yellow colour will appear, and then at 412 nm absorbance was recorded<sup>34</sup>

$$R = 5.74 \times 10^{-4} \left( \frac{A}{C_o} \right)$$

A (change in absorbance/min), C<sub>o</sub> (tissue homogenate's initial concentration) and R (rate in moles of substrate hydrolysed/minute/g tissue).

**Estimation of protein level.** In a falcon tube, brain homogenate (.2 mL) and reagent A (composed of 2% of sodium carbonate, .1 N NaOH (48 mL), 1% sodium potassium titrate (1 mL) in DW and .5% CuSO<sub>4</sub> (1 mL)) (4.5 mL) were added, stayed for 10 min. Then reagent B (prepared by 1 part of H<sub>2</sub>O and 2 parts of 2 N Folin-Phenol) (.5 mL) was added and incubated at 37°C for 30 min. After that at 660 nm absorbance was calculated. By using BSA as standard, protein level was calculated.<sup>35</sup>

## Biochemical Analysis

### Estimation of Neurotransmitters level

**Preparation of tissue extracts.** 50–75 mg of brain tissues were homogenized with HCl-Butanol (37% HCl (.425 mL) in n-butanol (50 mL)) (5 mL) for 1 min. Then centrifuged for 10 min at 2000 r/min, supernatant was separated and mixed with

heptane (2.5 mL) and .1 M HCl (.31 mL), shaking vigorously and again centrifuged for 10 min at 2000 r/min. Upper aqueous layer was separated and lower organic layer was discarded.<sup>36</sup>

**Estimation of noradrenaline and dopamine.** For the estimation of noradrenaline and dopamine aqueous phase (.2 mL), .4 M HCl (.05 mL) and EDTA (.1 mL) were added in a falcon tube. Then for oxidation, iodine solution (.1 mL) was added. After 2 min reaction was stopped by adding Na<sub>2</sub>SO<sub>3</sub> solution (.1 mL). Then after 1.5 min Acetic acid (.1 mL) is added, heated for 6 min at 100°C. The excitation and emission spectra from the spectrofluorometer were read when the solution reached room temperature. For dopamine readings were taken at 330–375 nm and for adrenaline 395–485 nm.<sup>36</sup> By using following formula dopamine level was calculated

$$Y = 0.0314X + 0.1067$$

**Estimation of serotonin.** For the estimation of serotonin, the aqueous extract (.2 mL) and O-phthalaldehyde (OPT) (.25 mL) reagent were added in a falcon tube. Heated at 100°C for 10 min fluorophore was developed. When sample reached at equilibrium reading were taken at 360–470 nm in Spectro fluorometer.<sup>36</sup>

**Estimation of inflammatory biomarkers by ELISA.** The elabscience ELISA kit of IL-6 and TNF- $\alpha$  was used, protocol is followed according to the kit description.

**Statistical analysis.** The data was presented as Mean  $\pm$  SD. The statistical analysis was done by using Graph Pad Prism software version 8.0.2. One-way Analysis of Variance (-ANOVA) by followed by Turkeys multiple compartment tests as well as Dunnett's multiple compartment tests were employed to find out the variation between the groups.

## Results

### Percentage Yield of Ethanolic Extract *Breynia cernua*

The percentage yield of ethanolic extract of *B cernua* found to be 2%. Total dry weight of extract was 14 gm.

### Phytochemical Analysis Ethanolic Extract of *Breynia cernua*

**Qualitative analysis.** For primary phytochemicals, proteins, carbohydrates and lipids were present. Secondary metabolites, alkaloids, glycosides, tannins, saponins, terpenoids and resins were identified. Results are mentioned in Table 1.

#### Quantitative analysis

**FTIR spectrum.** The FTIR analysis of *B cernua* shows the presence of many pharmacologically active constituents.

**Table 1.** Phytochemical Analysis of Plant Constituents *Breynia cernua* (BCE) Whole Plant Extract.

Constituents	Tests performed	Ethanolic extract
Reducing sugars	Fehling's tests	+++
Proteins	Ninhydrin test	–
Fats	Soap formation test	–
Saponins	Foam test	++
Steroidal glycosides	Keller Killani test	+++
Tannins	Ferric chloride test	++
Anthraquinones glycosides	Bontrager's test	+++
Resins	Acid anhydride test	–
Alkaloids	Dragendroff test	+

The FTIR spectra of *B cernua* showed peaks mentioned in Table 2. These peaks reveal the C–H stretch (alkanes), O–H stretch (carboxylic acid), N–H stretch (primary ammonium salts), C–O–H bend (carboxylic acid and alcohols), C–O stretch (primary alcohols) and C = C stretch (alkyl part of fatty acid chain). FTIR spectrum is shown in Figures 2 and 3.

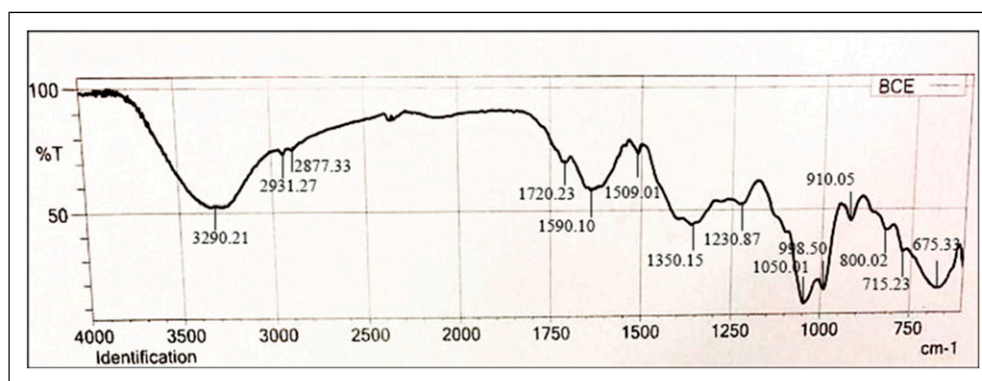
**HPLC analysis.** The HPLC analysis of BCE (Figure 2) noticeably reveals the presence of 15 compounds, there structure and names are mentioned in Figure 4 and Table 3. Phytochemicals pyrogallol, propionic acid, *N*-methyl-11-acetoxyluperzine B, chlorogenic acid, quercetin, catechol, *p*-coumaric acid and  $\gamma$ -tocopherol are shown with moderate peaks. The thioinosinic monophosphate is separated with a sharp peak.

**In Vitro antioxidant activity.** The *in vitro* antioxidant DPPH assay shows 78.02% inhibition at .5 mg/mL of BCE with 3.4  $\mu$ g IC<sub>50</sub> value, NO-scavenging activity shows 48.05% inhibition at .25 mg/mL of BCE, and ferrous reducing power assay shows 71.45% inhibition at .5 mg/mL of BCE. Results are mentioned in Table 4. The results of these assays suggest that *B cernua* exhibited potential antioxidant activity. In Ferrous reducing power assay, the ferric of potassium ferricyanate is reduced to ferrous by the antioxidants of plant.

**Total phenolic and flavonoid content.** Among secondary metabolites the phenolic compounds are highest in concentration, that is, 17.23% as compared to flavonoid compounds, that is, 10.23% in ethanol extract of *B cernua*. Linear regression equation  $Y = .0716X - .0135$  with  $R^2 = .9915$  obtained from standard curve of Gallic acid is used for the quantification of TPC were 17.23%. The regression equation  $Y = .0021X + .0149$  with  $R^2 = .9857$  obtained from the standard curve of quercetin is used for the quantification of total flavonoid content that were 10.23%.

**Table 2.** Phytochemical Composition of Ethanolic Extract of *Breynia cernua* (BCE) Whole Plant Extract Through FTIR Analysis.

Wave number (cm <sup>-1</sup> )	Intensity of estimation	Group or functional group class
3290.21	S	O–H stretch (alcohols)
2931.27	W	C–H stretch (Alkanes)
		N–H stretch (amine salt)
2877.33	W	C–H stretch (alkanes)
1720.23	M	C=O stretch (Aldehyde)
1590.10	M	C=C stretch ( $\alpha$ , $\beta$ -unsaturated ketone)
1509.01	W	N–O stretch (nitro compounds)
1350.15	M	O–H bend (carboxylic acid and alcohols)
1230.87	M	C–O stretch (alkyl aryl ethers)
1050.01	S	C–O stretch (primary alcohols)
998.50	S	C=C bending (monosubstituted alkenes)
910.05	M	C=C bend (alkenes like vanylidine)
800.02	M	C=C bend (trisubstituted alkenes)
715.23	M	C=C bend (cis trisubstituted alkenes)
675.33	S	C–X stretch (halo compounds)

**Figure 2.** Fourier transform infrared spectroscopy spectrum of ethanolic extract of *Breynia cernua*.

#### Effect of ethanolic extract of *Breynia cernua* on behavioural studies

**Open field test.** The results of open field test shows that the number of crossed lines and time spending in central area is significantly lower in disease control group as compare to BCE-treated groups ( $P < .001$ ). It recommends that rats are typically terrified of open spaces, but once they become accustomed to them, they begin to explore the area in quest of food. The exploratory behaviour of rats was significantly increased by the treatment with BCE (dose dependent effect). Results are mentioned in [Figure 5A and 5B](#).

**Wire hanging test.** Neuromuscular strength of rats is investigated by wire hanging test. Results shows that the neuromuscular strength in disease control is significantly reduced ( $P < .001$ ) as compare to control group. The BCE extract showed significant ( $P < .001$ ) improvement in hanging time in a dose-dependent manner with following order 500 > 250 > 50 mg/kg. So high dose of extract can

improve the neuromuscular strength of rats. Results are depicted in [Figure 6](#).

**Hole board test.** This test is used to study the learning and spatial performance in rats or any other rodents. Number of head dipping are calculated. Results shows that the number of head dipping in disease control group was significantly reduced ( $P < .001$ ) as compare to standard and control. The BCE treatments groups shows dose dependent effect as the dose increases the cognitive and memory functioning was significantly increased ( $P < .001$ ). Results are mentioned in [Figure 7](#).

**Y maze test.** The exploratory behaviour of rats is determined by the help of Y-maze. With the help of this maze, the cognitive deficit in rats is measured. Results of our study shows that the % alteration and total number of arm entries in disease control group was significantly reduced ( $P < .001$ ) as compare to control. The BCE-treated groups show dose

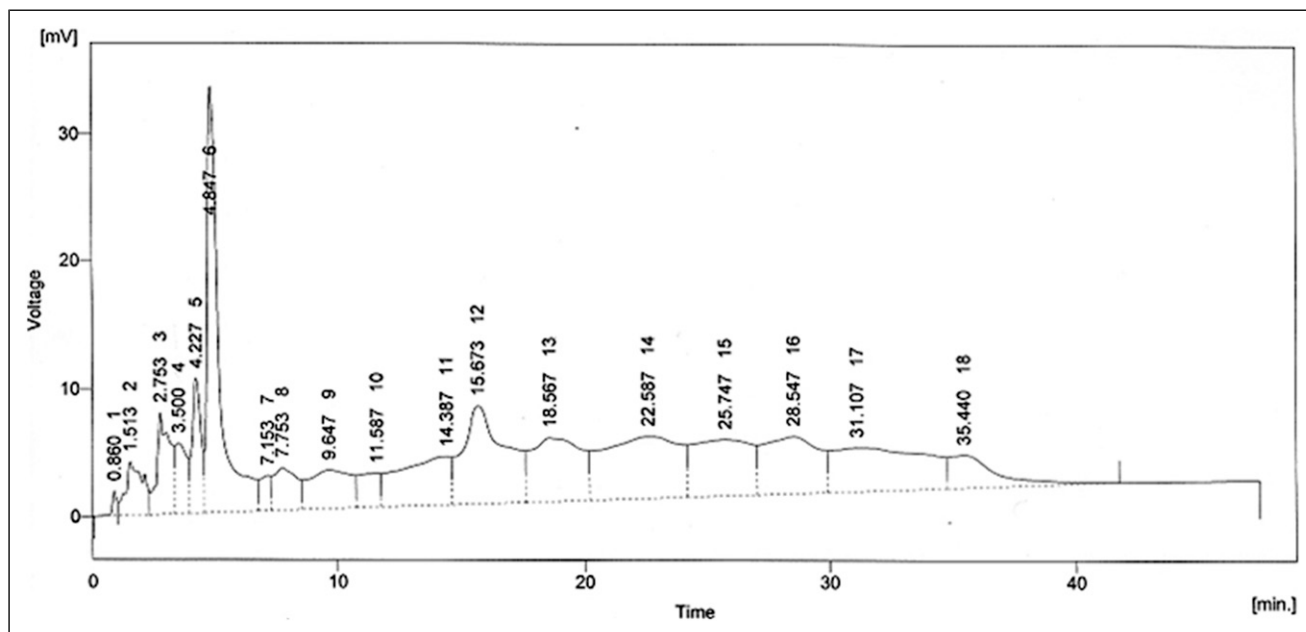


Figure 3. HPLC chromatogram of ethanolic extract of *Breynia cernua*.

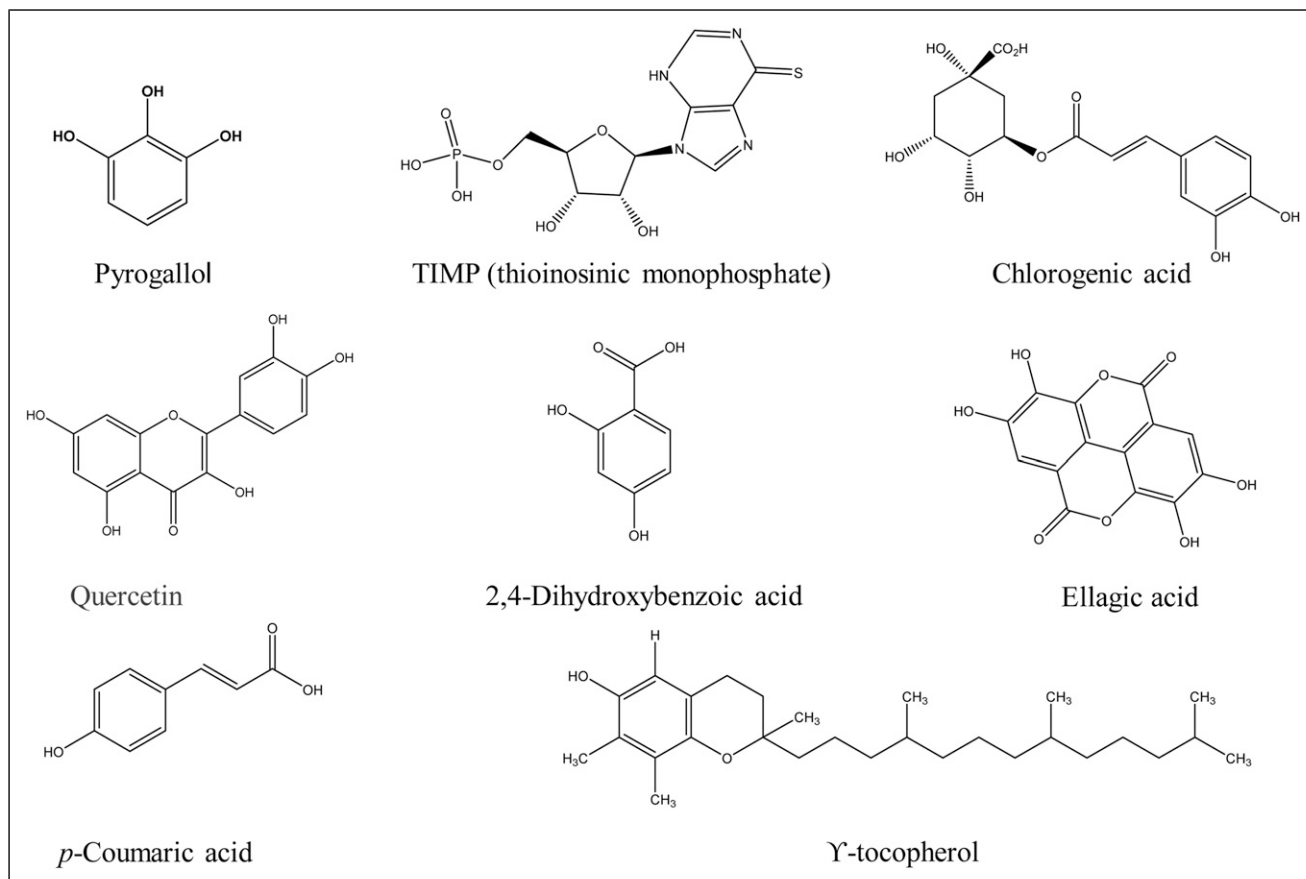


Figure 4. Structures of compounds elucidated by HPLC from ethanolic extract of *Breynia cernua*.



dependent improvement in percentage alteration and total number of arm entries. The high dosage group (500 mg/kg) shows maximum memory regain. The exploratory behaviour of rats was significantly increased ( $P > .001$ ) in all BCE-treated groups. Results are mentioned in [Figure 8A and 8B](#).

**Table 3.** Phytochemicals Identified by HPLC from Ethanolic Extract of *Breynia cernua* (BCE), their Retention Time.

Sr No	Retention time (min)	Compounds detected
1	.860	Pyridine
2	2.753	Pyrogallol
3	3.50	Propionic acid
4	4.847	TIMP (thioinosinic monophosphate)
5	7.753	N-methyl-11-acetoxypiperazine B
6	9.647	4-Hydroxybenzoic acid
7	11.587	Chlorogenic acid
8	14.387	Quercetin
9	15.673	Catechol
10	18.567	2,4-dihydroxybenzoic acid
11	22.587	Ellagic acid
12	25.747	Anisic acid
13	28.547	p-coumaric acid
14	31.107	γ-tocopherol
15	35.440	Cimicifugic acid F

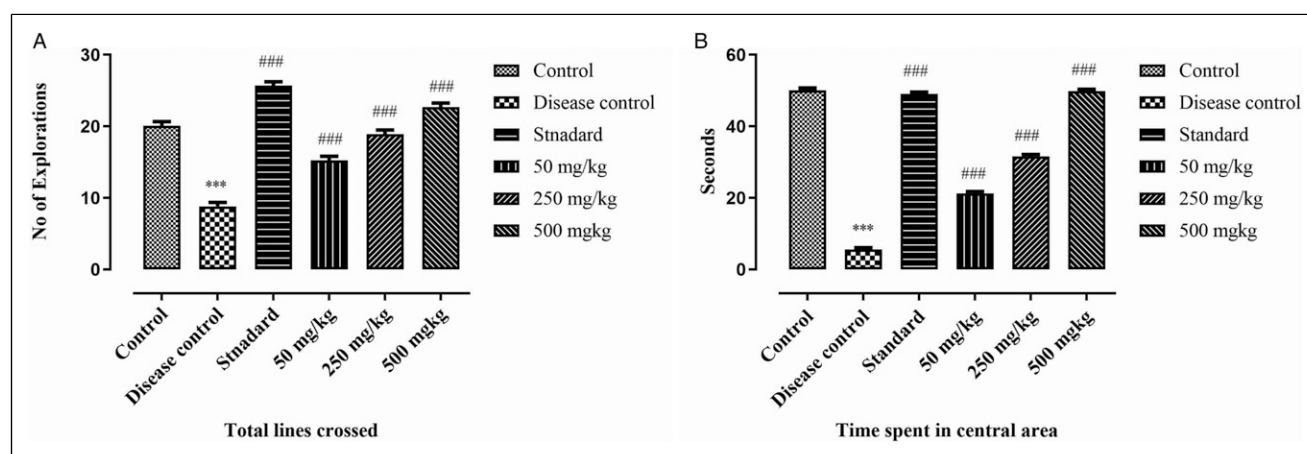
**Effect of ethanolic extract of *Breynia cernua* on histopathological analysis.** The histopathological examination of brain showed that the brain tissues of control group are normal as compared to disease control. There is a significant neuronal damage, haemorrhage, pigmentation, large intracellular spaces, high amount of lewy bodies and cell death is observed in disease control group. In standard group (levodopa plus carbidopa) there is a significant reduction in neuronal damage. When compared to BCE-treated groups, 500 mg/kg shows significant reversal of neuronal damage as compare to 250, and 50 mg/kg. Results are mentioned in [Figure 9](#).

### Effect of Ethanolic Extract of *Breynia cernua* on Biochemical Parameters

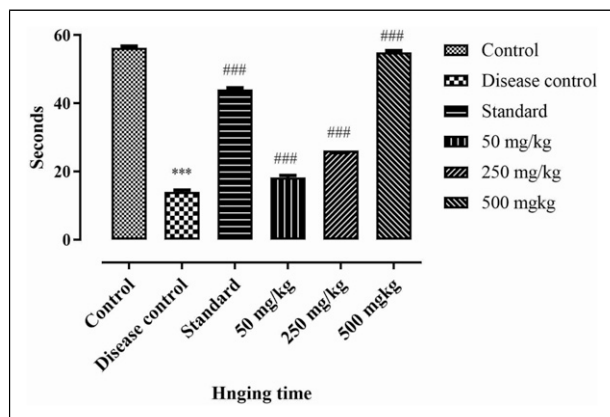
**Estimation of GSH, GPx, SOD, CAT and MDA.** The biochemical parameters (GSH, GPx, SOD and CAT) were significantly reduced in disease control group (treated with paraquat), but the MDA level (lipid peroxidation) was increased significantly ( $P < .001$ ) in disease control group compared to control. BCE (250 and 500 mg/kg) and standard shows significant increase in GSH, GPx, SOD and CAT and significantly reduced the MDA level. Data is mentioned in [Table 5](#).

**Table 4.** Effect of Ethanolic Extract of *Breynia cernua* (BCE) on Antioxidant Biomarkers.

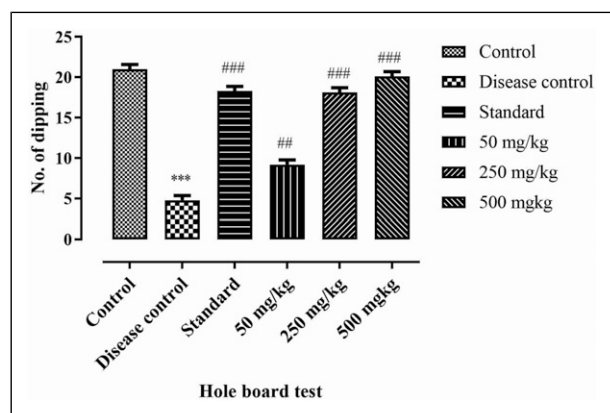
Plant name	DPPH activity		NO-scavenging activity	Ferrous reducing power
	(%) inhibition at .5 mg/mL	IC <sub>50</sub> (μg)	(%) inhibition at .25 mg/mL	Vit. C % equivalent at .5 mg/mL
<b>BCE</b>	78.02 ± .015	3.40 ± .60	48.45 ± .11	71.45 ± .03



**Figure 5.** Effect of ethanolic extract of *Breynia cernua* on open field test in paraquat induced parkinson disease model. (A) Number of lines crossed and (B) Time spent in central area. Values are shown as the mean ± SEM, (n = 5), \*\*\* ( $P < .001$ ) compared with control, and #### ( $P < .001$ ) compared with disease control. Disease control: Paraquat intoxication, Standard: (L-dopa + carbidopa).



**Figure 6.** Effect of ethanolic extract of *Breynia cernua* on wire hanging test in paraquat induced parkinson disease model. Values are shown as the mean  $\pm$  SEM, (n = 5), \*\*\* ( $P < .001$ ) compared with control, and ### ( $P < .001$ ) compared with disease control. Disease control: Paraquat intoxication, Standard: (L-dopa + carbidopa).



**Figure 7.** Effect of ethanolic extract of *Breynia cernua* on hole board test in paraquat induced parkinson disease model. Number of head drippings in holes, Values are shown as the mean  $\pm$  SEM, (n = 5) \*\*\* ( $P < .001$ ) compared with control and ### ( $P < .001$ ) compared with disease control. Disease control: Paraquat intoxication, Standard: (L-dopa + carbidopa).

**Estimation of neurotransmitter level.** In Table 6, the level of dopamine and noradrenaline in each group of animals is mentioned. Results show a significant decrease in the level of dopamine in disease control group than control group. The treatment groups showed dose dependent effect (increasing the concentration of extract level of dopamine is also increased). Noradrenaline shows significant ( $P < .001$ ) variation and improvement in each group.

**Estimation of AChE.** In PD, the level of acetylcholine is decreased due to the breakdown of choline acetyltransferases, which is associated with cognitive impairment. BCE showed significant ( $P < .001$ ) protective activity for acetylcholine by

inhibiting the acetylcholinesterase (AChE). The level of AChE was significantly increased ( $P < .05$ ) in disease control compared to control. In BCE-treated groups the AChE level was significantly reduced ( $P < .001$ ) in a dose-dependent manner compared to disease control. Results are mentioned in Figure 10.

**Estimation of protein level.** Protein level is calculated by linear regression equation obtained for bovine albumin serum (BSA) as

$$Y = 0.00007571X + 0.0000476$$

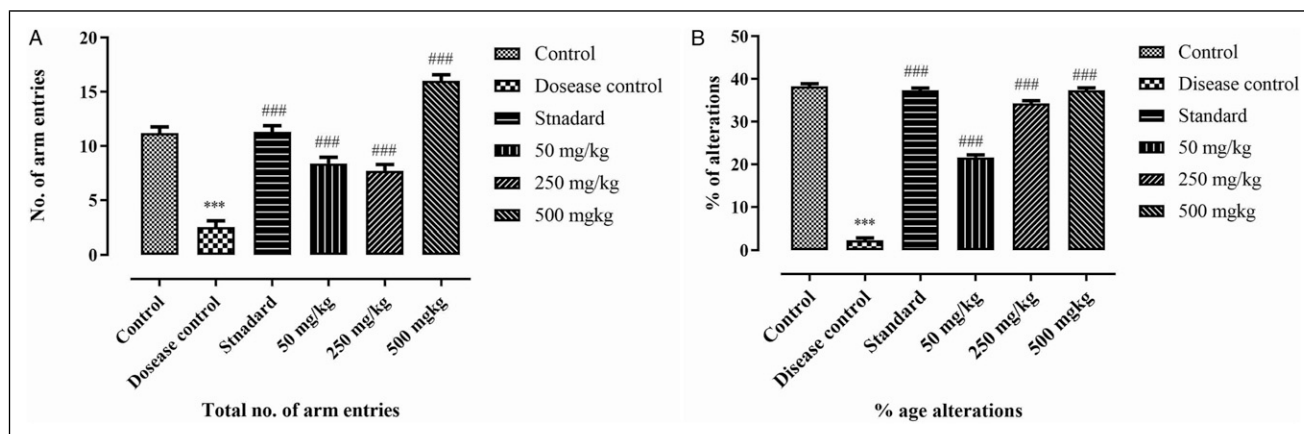
Results suggests that protein level was decreased significantly ( $P < .001$ ) in disease control when compared with control. The BCE-treated groups show dose dependent effect, as 500 mg/kg shows high normal protein level as compare to low dosage group. Treatment groups show significant increase ( $P < .001$ ) in protein level in brain of rats compared with disease control. Results are mentioned in Figure 11.

**Estimation of inflammatory biomarkers by ELISA.** The results suggested that the level of IL-6 and TNF- $\alpha$  was significantly high ( $P > .001$ ) in disease control as compared to control group. The BCE-treated groups showed dose dependent effect. The treatment group of 500 mg/kg significantly decreased ( $P > .001$ ) the level of IL-6 and TNF- $\alpha$  compared to disease control group. Results are shown in Figure 12.

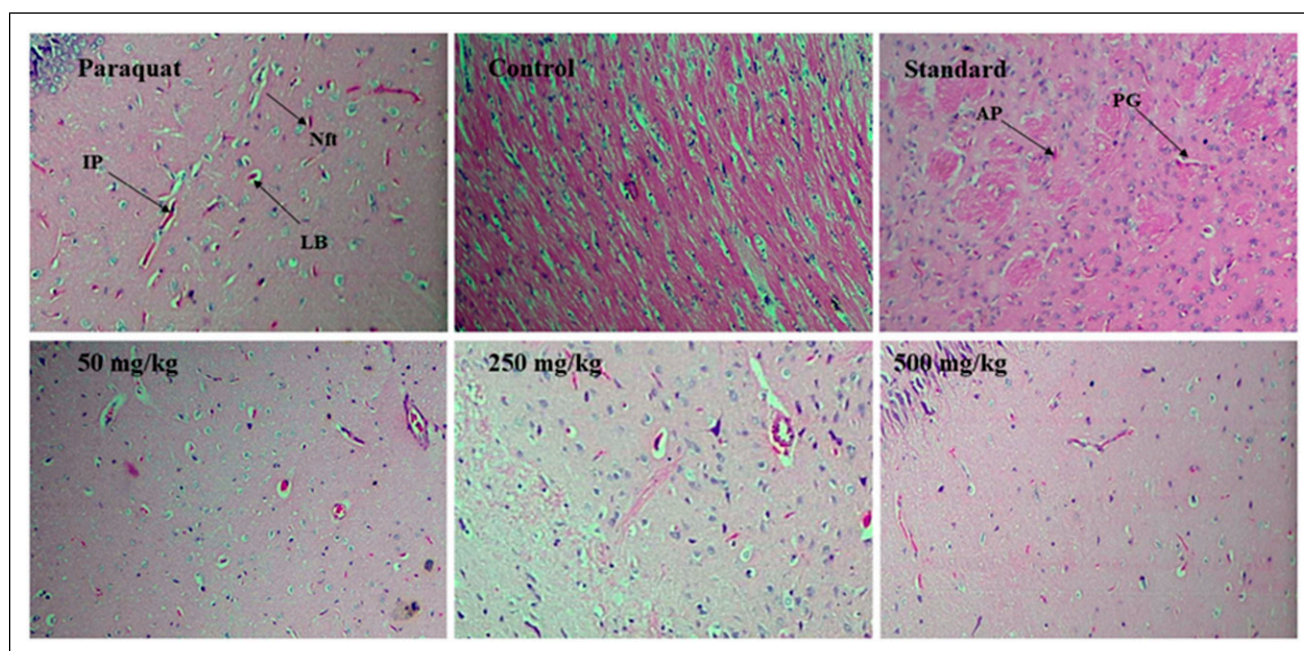
## Discussion

Neurodegenerative diseases such as; PD and alzheimer disease prevalence are increased now a days. Most of the neurodegenerative disorders have a close relation with age and age dependency is an important factor in their pathogenesis.<sup>37,38</sup> The importance of research in novel herbal neuroprotective compounds is extremely important because there is lack of specific treatment, increased morbidity and expensive pharmaceuticals for neurodegenerative diseases.

Phytochemical analyses of *B. cernua* showed its pharmacological importance due to the presence of alkaloids, flavonoids, glycosides, lignans, saponins and polyphenolic. Flavonoids-rich food supplements and plant extracts have the ability to slow neurodegeneration and also improving memory, cognitive function and learning. Plant extracts rich in flavonoids are beneficial for neurodegenerative disorders because they modulate intracellular signalling pathways that enhance cell survival and age-related neuronal activities. *B. cernua* contains a good number of flavonoids and polyphenolics,<sup>39-41</sup> which are powerful antioxidants with anti-schaemic action and can be used as precursor for the development of new neuroprotective medicines. Flavonoids exert their neuroprotective effects primarily via promoting neuronal regeneration and reducing oxidative stress.<sup>37</sup> So, the flavonoids present in *B. cernua* extract are the main



**Figure 8.** Effect of ethanolic extract of *Breynia cernua* on Y-maze test in paraquat induced parkinson disease model. (A) total number of arm entries and (B) %age alterations, Values are shown as the mean  $\pm$  SEM, (n = 5) \*\*\* (P < .001) compared with control, and #### (P < .001) compared with disease control. Disease control: Paraquat intoxication, Standard: (L-dopa + carbidopa).



**Figure 9.** Brain histopathological analysis. Haematoxylin and eosin staining of transverse brain section at 10X magnification. Control: showed the normal architecture of control group. Paraquat: Nft (neurofibrillary tangles), IP (intracellular plaques), AP (amyloid beta plaques), LB (Lewy bodies) and PG (pigmentation). It indicates the neurodegeneration, inflammation and vacuolated cytoplasm in disease control group. Nft, IP, AP and LB were less in standard group. Neurodegeneration was slightly improved in 50 mg/kg ethanolic extract of *Breynia cernua* treated group. Neuronal loss was improved in 250 mg/kg BCE-treated group. 500 mg/kg BCE-treated group significantly improved the architecture of transverse brain section. Disease control: Paraquat (PQ) intoxication, Standard: (L-dopa + carbidopa).

compounds for neuroprotective agent's development. Our findings of FTIR and HPLC analysis provided the evidence for neuroprotective and antioxidant potential of *B. cernua*. HPLC analysis showed the presence of fifteen different compounds. Majority of them are phenolic and flavonoid compounds. Phenolic acids like chlorogenic acid, *p*-coumaric acid and ellagic acid are best antioxidant compounds found in *B. cernua*

with strong peaks. Previous studies suggested that these compounds show anti-Parkinson activity by the reduction of TNF- $\alpha$ , pro-inflammatory cytokines, MDA level and increased SOD level and neurons number in the brain of rats. They reduced the ROS in brain so act as potent antioxidant compounds.<sup>42</sup> According to the one previous study, the lycodine-type alkaloids from *Lycopodium casuarinoides*

**Table 5.** Effect of Ethanolic Extract of *Breynia cernua* (BCE) on MDA, GPx, CAT, SOD and GSH.

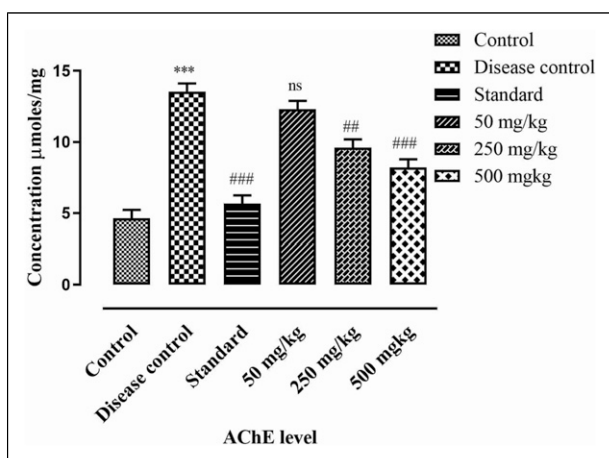
Groups	MDA (TBA mg/ml)	GPx ( $\mu\text{g}/\text{mg}$ protein)	CAT (IU/ $\mu\text{l}$ )	SOD (IU/ $\mu\text{l}$ )	GSH ( $\mu\text{g}/\text{mg}$ protein)
Control	73.13 $\pm$ .57735	9.25 $\pm$ .57735	.72 $\pm$ .058	.08 $\pm$ .006	.732 $\pm$ .012
Disease control	98.04 $\pm$ .57735***	3.23 $\pm$ .57735***	.55 $\pm$ .057***	.025 $\pm$ .005***	.248 $\pm$ .009***
Standard	70.45 $\pm$ .57735####	8.66 $\pm$ .57735####	.715 $\pm$ .057 <sup>ns</sup>	.058 $\pm$ .003###	.688 $\pm$ .009####
50 mg/kg	75.57667 $\pm$ .58####	4.46 $\pm$ .57735 <sup>ns</sup>	.672 $\pm$ .056 <sup>ns</sup>	.032 $\pm$ .004 <sup>ns</sup>	.379 $\pm$ .015 <sup>ns</sup>
250 mg/kg	61.62 $\pm$ .57735####	10.49 $\pm$ .57735####	.698 $\pm$ .058 <sup>ns</sup>	.034 $\pm$ .006 <sup>ns</sup>	.57 $\pm$ .02###
500 mg/kg	46.25 $\pm$ .57735####	10.35 $\pm$ .57735####	.711 $\pm$ .059 <sup>ns</sup>	.061 $\pm$ .007###	.717 $\pm$ .009####

Values are shown as the mean  $\pm$  SEM, (n = 5), \*\*\* (P < .001) compared with control, and #### (P < .001), ns (non-significant) compared with disease control. Disease control: Paraquat (PQ) intoxication, Standard: (L-dopa + carbidopa).

**Table 6.** Effect of Ethanolic Extract of *Breynia cernua* (BCE) on Neurotransmitters Level: Dopamine, Noradrenaline, and Serotonin.

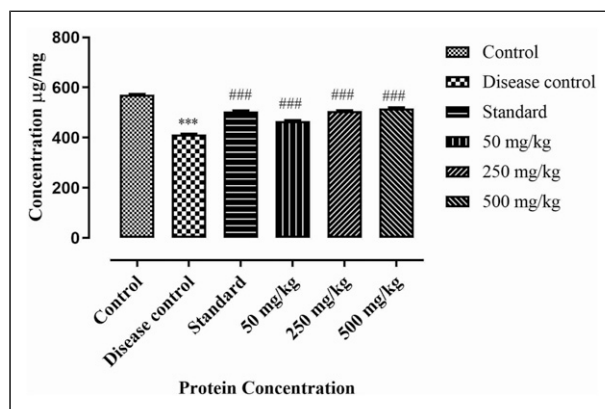
Groups	Dopamine ( $\mu\text{g}/\mu\text{g}$ of bt)	Noradrenaline ( $\mu\text{g}/\mu\text{g}$ of bt)	Serotonin ( $\mu\text{g}/\mu\text{g}$ of bt)
<b>Control</b>	.34 $\pm$ .05	.06 $\pm$ .005	.65 $\pm$ .05
<b>Disease control (paraquat)</b>	.12 $\pm$ .05***	.05 $\pm$ .005	.27 $\pm$ .05***
<b>Standard (L-dopa + carbidopa)</b>	.58 $\pm$ .05####	.07 $\pm$ .005	.58 $\pm$ .05####
<b>50 mg/kg</b>	.36 $\pm$ .05 <sup>ns</sup>	.04 $\pm$ .005	.36 $\pm$ .05 <sup>ns</sup>
<b>250 mg/kg</b>	.42 $\pm$ .05####	.04 $\pm$ .005	.44 $\pm$ .05 <sup>ns</sup>
<b>500 mg/kg</b>	.54 $\pm$ .05####	.06 $\pm$ .005	.56 $\pm$ .05####

Values are shown as the mean  $\pm$  SEM, (n = 5), \*\*\* (P < .001) compared with control, and #### (P < .001), ns (non-significant) compared with disease control. Disease control: Paraquat (PQ) intoxication, Standard: (L-dopa + carbidopa).



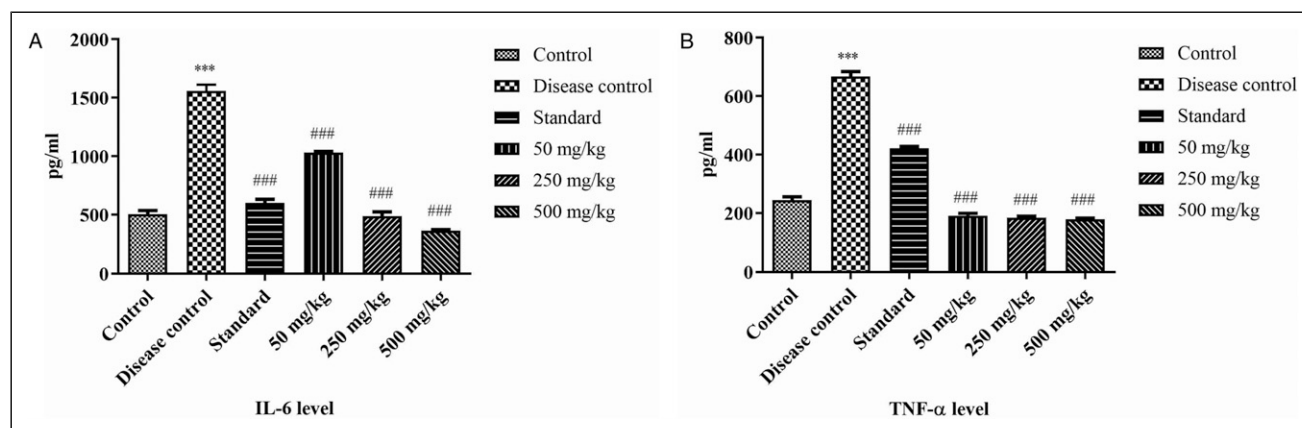
**Figure 10.** Effect of ethanolic extract of *Breynia cernua* on acetylcholinesterase level in brain, values are shown as the mean  $\pm$  SEM, (n = 5), \*\*\* (P < .001) compared with control, and #### (P < .001), ns (non-significant) compared with disease control. Disease control: Paraquat intoxication, Standard: (L-dopa + carbidopa).

showed strong AChE inhibitory activity by inhibiting the ROS the *N*-methyl-11-acetoxyhuperzine B is elucidated with sharp peak in *B. cernua*.<sup>43</sup> Another study suggests that quercetin is a potent antioxidant compound, represses TNF- $\alpha$ , reduces pro-inflammatory cytokines, decreases AChE level in brain and shows strong anti-neuroinflammatory properties in PD.<sup>35,44</sup> Due to the presence of all these compounds in *B. cernua*, the



**Figure 11.** Effect of ethanolic extract of *Breynia cernua* on level of protein in rat's brain. Values are shown as the mean  $\pm$  SEM, (n = 5), \*\*\* (P < .001) compared with control, and #### (P < .001) compared with disease control. Disease control: Paraquat intoxication, Standard: (L-dopa + carbidopa).

DPPH, NO-scavenging and ferrous reducing power assays shows highest radical scavenging potential and inhibitory activity. Therefore, *B. cernua* can play a pivotal role in neurodegenerative diseases induced by oxidative stress such as PD. As, it is already reported and also established that AChE inhibition is important in relation to motor function and its coordination. AChE inhibition enhances the learning and memory. Additionally, it is responsible for betterment of cholinergic transmission that enhances the motor coordination



**Figure 12.** Effect of ethanolic extract of *Breyenia cernua* on inflammatory markers: IL-6 and TNF- $\alpha$  level. Values are shown as the mean  $\pm$  SEM, ( $n = 5$ ), \*\*\* ( $P < .001$ ) compared with control, and ### ( $P < .001$ ) compared with disease control. Disease control: Paraquat intoxication, Standard: (L-dopa + carbidopa).

and movements. Thus, AChE estimation is very important parameter for PD induction and management.<sup>35</sup>

Paraquat induced neurodegeneration in the SN region by entering in the CNS via the neutral amino acid transporter in the disease control group. The wire hanging and hole board test results suggest that BCE improves neuromuscular coordination and reduces the depression and psychiatric issues related to PD by increases the hanging time and head dipping in a dose-dependent manner ( $50 < 250 < 500$  mg/kg) in treatment groups. Thus, the wire hanging test findings were according to the previous study by Jay Parkash and Satyendra Kumar Yadav, in which the *Withania somnifera* root extracts significantly improve the hanging time and decrease the oxidative stress in the paraquat-induced PD model.<sup>10</sup> The hole board and Y maze test findings were also harmonious with the previous studies.<sup>45,46</sup>

Oxidative stress and mitochondrial dysfunction are the main genetic form of abnormalities that are found in PD.<sup>47</sup> Multiple biological functions are impaired by disruptions in the physiological regulation of the redox potential in neurons, which eventually results in cell death.<sup>48</sup> Body combats against the effects of free radicals by a defensive system of antioxidant enzymes (SOD, CAT, GSH, and GPx). Redox cycling compound (paraquat) increases ROS, mitochondrial damage and ultimately increases the oxidative stress by disturbing the mitochondrial function. Thus, mitochondrial dysfunctionality caused an imbalance of MDA (lipid peroxidation) level paraquat treated group.<sup>49</sup> In this study, the level of MDA is increased in disease control group and decreased in a dose-dependent manner in BCE-treated groups due to presence of flavonoids, phenols, alkaloids and saponins. The endogenous antioxidant and homeostasis of cells depends on the antioxidant enzyme SOD, CAT, GSH and GPx level.<sup>50</sup> In the present project, the level of these antioxidant enzymes is significantly reduced ( $P < .001$ ) while BCE treatment significantly improved these

antioxidant markers in a dose-dependent manner as compare to disease control. The level of protein is decreased in diseased model due to the formation of ROS that causes oxidative stress.<sup>51</sup> The study suggested that the high dose of BCE treated (500 mg/kg) showed significance increase ( $P < .001$ ) in protein level as compare to the disease control group.

The important neuromodulators in basal ganglia are dopamine, noradrenaline, serotonin and acetylcholine which regulates the motor and cognitive abilities. The level of these neurotransmitters decreased due to the oxidative stress. The level of acetylcholine is decreased due to deterioration of choline acetyltransferase, causes cognitive debilities in PD. Apoptosis causes the loss of dopaminergic neurons in pars compacta of PD patients and AChE is the key regulator of apoptosis. AChE interacts with apoptotic protease activating factor-1 and cytochrome c cause cell death.<sup>52</sup> The BCE treated rat's group showed a significant increment ( $P < .001$ ) in the level of these neurotransmitters by showing antioxidant property due to the presence of phenolic compounds. The high dose of BCE (500 mg/kg) showed significantly improved acetylcholine levels by inhibiting the AChE because this enzyme breakdown the acetylcholine to its by-products, that is, acetic acid and choline.

In a previous study, Ashwagandha root extract demonstrated antiparkinsonian propensity by reducing the duration of catalepsy and improving oxidative stress by reducing lipid peroxidation in the Paraquat induced experimental model and one of our study results were consistent with these findings.<sup>53</sup> Therefore, results suggested that BCE improved the behavioural parameters which are evident with improved muscular strength, locomotion, memory and reduced oxidative stress.

Parkinson disease pathogenesis is strongly linked to increased expression of pro-inflammatory cytokines like TNF- $\alpha$  and Interleukin-6. Increased level of TNF- $\alpha$  has an

ability to enhance the levels of various cytokines which might cause neurodegeneration.<sup>54,55</sup> The higher level of pro-inflammatory cytokines (TNF- $\alpha$  and IL-6) causes the dopaminergic cell death in PD brain. TNF- $\alpha$  and IL-6 are strong mediators of microglial functions, involved in the dopaminergic neuronal cell death.<sup>56</sup> Recent studies reported that neurodegenerative disorders can be treated by anti-inflammatory agents, present in plants. The IL-6 decreased the level of NF-KB and upregulated the level of MAPKA pathway, resulting in the neuro-inflammation.<sup>57</sup> In the present study, TNF- $\alpha$  and IL-6 is increased in disease control group due to damage in basal ganglia region of brain. The BCE showed dose dependent decremental effects on inflammatory biomarkers level. The most significant ( $P < .001$ ) effect was seen at BCE 500 mg/kg dose group.

The majority of the phytoconstituents have been found to activate neuroprotective, controlled cell-stress response pathways. As a result, we came to the conclusion that BCE acts as a modulator against the behavioural and biochemical changes caused by Paraquat-induced neurotoxicity, and it showed a good potential in amelioration of the PD progression and symptomatology.

## Conclusion

The phytochemical screening of *B. cernua* reveals the presence of both primary and secondary metabolites. Thus, it provides the rationale for its folkloric uses in inflammatory and neurodegenerative conditions of the brain. But more detailed molecular mechanism is still warranted to authenticate the study at clinical level.

## Declaration of Conflicting Interests

The author(s) declared no potential conflicts of interest with respect to the research, authorship, and/or publication of this article.

## Funding

The author(s) received no financial support for the research, authorship, and/or publication of this article.

## ORCID iD

Liaquat Hussain  <https://orcid.org/0000-0001-7171-5917>

## References

- Olanow CW, Stern MB, Sethi K. The scientific and clinical basis for the treatment of Parkinson disease (2009). *Neurology*. 2009; 72(21 suppl 4):S1-S136.
- Ríos J-L, Onteniente M, Picazo D, Montesinos M-C. Medicinal plants and natural products as potential sources for antiparkinson drugs. *Planta Med*. 2016;82(11/12): 942-951.
- Chaudhuri KR, Schapira AH. Non-motor symptoms of Parkinson's disease: dopaminergic pathophysiology and treatment. *Lancet Neurol*. 2009;8(5):464-474.
- Ingale SP, Kasture SB. Antioxidant and antiparkinsonian activity of Passiflora incarnata leaves. *Oriental Pharmacy and Experimental Medicine*. 2014;14(3):231-236.
- Weng M, Xie X, Liu C, Lim K-L, Zhang C-w, Li L. The sources of reactive oxygen species and its possible role in the pathogenesis of Parkinson's disease. *Parkinson's disease*. 2018;2018:1-9
- Henchcliffe C, Beal MF. Mitochondrial biology and oxidative stress in Parkinson disease pathogenesis. *Nat Clin Pract Neurol*. 2008;4(11):600-609.
- Olanow CW. The pathogenesis of cell death in Parkinson's disease—2007. *Mov Disord: Official J Mov Disord Soc*. 2007; 22(S17):S335-S342.
- Rappold PM, Cui M, Chesser AS, et al. Paraquat neurotoxicity is mediated by the dopamine transporter and organic cation transporter-3. *Proc Natl Acad Sci USA*. 2011;108(51): 20766-20771.
- Zhang X-f, Thompson M, Xu Y-h. Multifactorial theory applied to the neurotoxicity of paraquat and paraquat-induced mechanisms of developing Parkinson's disease. *Lab Invest*. 2016; 96(5):496-507.
- Prakash J, Yadav SK, Chouhan S, Singh SP. Neuroprotective role of Withania somnifera root extract in Maneb-Paraquat induced mouse model of parkinsonism. *Neurochem Res*. 2013;38(5):972-980.
- Zeng L-H, Rana S, Hussain L, et al. Polycystic ovary syndrome: a disorder of reproductive age; its pathogenesis and a discussion on emerging role of herbal remedies. *Front Pharmacol*. 2022; 13:874914.
- Iqbal SM, Hussain L, Hussain M, et al. Nephroprotective potential of a standardized extract of bambusa arundinacea: in vitro and in vivo studies. *ACS Omega*. 2022;7(21):18159-18167. doi: [10.1021/acsomega.2c02047](https://doi.org/10.1021/acsomega.2c02047)
- Younas A, Hussain L, Shabbir A, Asif M, Hussain M, Manzoor F. Effects of fagonia indica on letrozole-induced polycystic ovarian syndrome (PCOS) in young adult female rats. *Evid base Compl Alternative Med*. 2022;2022:1397060. doi:[10.1155/2022/1397060](https://doi.org/10.1155/2022/1397060)
- Manzoor F, Nisa MU, Shakoora A, Hussain L, Mahmood A, Younas a. Effect of sodium alginate supplementation on weight management and reproductive hormones in polycystic females. *Food Funct*. 2022. doi:[10.1039/D2FO01539K](https://doi.org/10.1039/D2FO01539K)
- Zeng L-H, Rana S, Hussain L, et al. Polycystic ovary syndrome: a disorder of reproductive age, its pathogenesis, and a discussion on the emerging role of herbal remedies. review. *Front Pharmacol*. 2022;13:874914. doi:[10.3389/fphar.2022.874914](https://doi.org/10.3389/fphar.2022.874914)
- Hoffmann P, Kathiriarachchi H, Wurdack KJ. A phylogenetic classification of Phyllanthaceae (Malpighiales; Euphorbiaceae sensu lato). *Kew Bull*. 2006;61(1):37-53.
- Vorontsova MS, Hoffmann P. A phylogenetic classification of tribe Porantherae (Phyllanthaceae, Euphorbiaceae sensu lato). *Kew Bull*. 2008;63(1):41-59.

18. Dirgantara S, Tanjung RH, Maury HK, Meiyanto E. Cytotoxic activity and phytochemical analysis of breynia cernua from Papua. *Indones J Pharm Sci Technolo.* 2018;1(1):31-36.
19. Khan M, Omoloso A. Antibacterial and antifungal activities of Breynia cernua. *Fitoterapia.* 2008;79(5):370-373.
20. Gotera KMC, Claveria RJR, Doronila AI, Perez TR. Localization of nickel in the hyperaccumulator plant Breynia cernua (Poir.) Mull. Arg. discovered in the nickeliferous laterites of Zambales, the Philippines. *Int J Phytoremediation.* 2020;22(2):127-133.
21. Le BaoDuy N, Trang DTD, Trang NPM. Preliminary phytochemical analysis of leaf extracts of *huja orientalis* (L.) Endl. *Int J Res Sci Manag.* 2015;2(1):21.
22. Saleem M, Javed F, Asif M, Kashif Baig M, Arif M. HPLC analysis and in vivo renoprotective evaluation of hydroalcoholic extract of Cucumis melo seeds in gentamicin-induced renal damage. *Medicina.* 2019;55(4):107.
23. Sultan M, Bhatti HN, Iqbal Z. Chemical analysis of essential oil of ginger (*Zingiber officinale*). *Pakistan J Biol Sci.* 2005;8(11):1576-1578.
24. Yen G-C, Duh P-D, Chuang D-Y. Antioxidant activity of anthraquinones and anthrone. *Food Chem.* 2000;70(4):437-441.
25. Awah F, Winkor V. Antioxidant activity, nitric oxide scavenging activity and phenolic content of *Ocimum gratissimum* leaf extract. *J Med Plant Res.* 2010;4:2479-2487. doi:10.5897/JMPR10.262
26. Chang C-C, Yang M-H, Wen H-M, Chern J-C. Estimation of total flavonoid content in propolis by two complementary colorimetric methods. *J Food Drug Anal.* 2002;10(3):3.
27. Lama J, Buhidma Y, Fletcher EJ, Duty S. Animal models of Parkinson's disease: a guide to selecting the optimal model for your research. *%J Neuronal Signaling.* 2021;5(4):NS20210026.
28. Duty S, Jenner P. Animal models of Parkinson's disease: a source of novel treatments and clues to the cause of the disease. *Br J Pharmacol.* 2011;164(4):1357-1391.
29. Saleem U, Chauhdary Z, Raza Z, et al. Anti-Parkinson's activity of *tribulus terrestris* via modulation of AChE,  $\alpha$ -synuclein, TNF- $\alpha$ , and IL-1 $\beta$ . *ACS Omega.* 2020;5(39):25216-25227.
30. Tillerson JL, Caudle W, Reveron M, Miller G. Exercise induces behavioral recovery and attenuates neurochemical deficits in rodent models of Parkinson's disease. *Neuroscience.* 2003;119(3):899-911.
31. Saleem U, Shehzad A, Shah S, et al. Antiparkinsonian activity of Cucurbita pepo seeds along with possible underlying mechanism. *Metab Brain Dis.* 2021;36(6):1231-1251.
32. Aydin E, Hritcu L, Dogan G, Hayta S, Bagci E. The effects of inhaled *Pimpinella peregrina* essential oil on scopolamine-induced memory impairment, anxiety, and depression in laboratory rats. *Mol Neurobiol.* 2016;53(9):6557-6567.
33. Parle M, Vasudevan M, Singh N. Swim everyday to keep dementia away. *J Sports Sci Med.* 2005;4(1):37-46.
34. Pickering C, Pickering R. Methods for the estimation of acetylcholinesterase activity in the plasma and brain of laboratory animals given carbamates or organophosphorus compounds. *Arch Toxicol.* 1971;27(3-4):292-310.
35. Vannur A, Biradar PR, Patil V. Experimental validation of *Vitex negundo* leaves hydroalcoholic extract for neuroprotection in haloperidol induced Parkinson's disease in rat. *Metab Brain Dis.* 2022;37(2):411-426.
36. Schlumpf M, Lichtensteiger W, Langemann H, Waser PG, Hefti F. A fluorometric micromethod for the simultaneous determination of serotonin, noradrenaline and dopamine in milligram amounts of brain tissue. *Biochem Pharmacol.* 1974;23(17):2437-2446.
37. Luo Y, Smith JV, Paramasivam V, et al. Inhibition of amyloid- $\beta$  aggregation and caspase-3 activation by the Ginkgo biloba extract EGb761. *Proc Natl Acad Sci USA.* 2002;99(19):12197-12202.
38. Rizzo G, Copetti M, Arcuti S, Martino D, Fontana A, Logroscino G. Accuracy of clinical diagnosis of Parkinson disease: a systematic review and meta-analysis. *Neurology.* 2016;86(6):566-576.
39. Hussain L, Ikram J, Rehman K, Tariq M, Ibrahim M, Akash MSH. Hepatoprotective effects of *Malva sylvestris* L. against paracetamol-induced hepatotoxicity. *Turk J Biol.* 2014;38(3):396-402.
40. Ali M, Qadir MI, Saleem M, et al. Hepatoprotective potential of *Convolvulus arvensis* against paracetamol-induced hepatotoxicity. *Bangladesh J Pharmacol.* 2013;8(3):300-304.
41. Imran I, Hussain L, Zia-Ul-Haq M, Janbaz KH, Gilani AH, De Feo V. Gastrointestinal and respiratory activities of *Acacia leucophloea*. *J Ethnopharmacol.* 2011;138(3):676-682.
42. Szwajgier D, Borowiec K, Pustelniak K. The neuroprotective effects of phenolic acids: molecular mechanism of action. *Nutrients.* 2017;9(5):477.
43. Zhang D-B, Chen J-J, Song Q-Y, Zhang L, Gao K. Lycodine-type alkaloids from *Lycopodium casuarinoides* and their acetylcholinesterase inhibitory activity. *Molecules.* 2014;19(7):9999-10010.
44. Islam MS, Quispe C, Hossain R, et al. Neuropharmacological effects of quercetin: a literature-based review. *Front Pharmacol.* 2021;12:665031.
45. Bagewadi HG, Khan AA. Investigation of antiparkinsonian effect of Aloe vera on haloperidol induced experimental animal model. *Indian J Pharmaceut Biol Res.* 2015;3(1):108-113.
46. Ogunnoiki AO, Ishola IO, Akinleye MO, Adeyemi OO. *Musa acuminata* Colla Millsp ameliorates paraquat-induced memory deficit and oxidative stress in murine Parkinson disease model. *Niger J Pharm.* 2022;56(1):136-143. <https://doi.org/10.51412/psnnpj.2022.15>
47. Tanner CM, Kamel F, Ross GW, et al. Rotenone, paraquat, and Parkinson's disease. *Environmental health perspectives.* 2011;119(6):866-872.
48. Swanson MD, Winter HC, Goldstein IJ, Markovitz DM. A lectin isolated from bananas is a potent inhibitor of HIV replication. *J Biol Chem.* 2010;285(12):8646-8655.
49. Opara J, Małeck A, Małeczka E, Socha T. Motor assessment in Parkinsons disease. *Ann Agric Environ Med.* 2017;24(3):411-415.
50. Chinta SJ, Woods G, Demaria M, et al. Cellular senescence is induced by the environmental neurotoxin paraquat and contributes to neuropathology linked to Parkinson's disease. *Cell Rep.* 2018;22(4):930-940.

51. Jenner P. Oxidative stress in Parkinson's disease. *Ann Neurol: Official J Am Neurol Assoc Child Neurol Soc.* 2003;53(S3):S26-S38.
52. Zhang X, Lu L, Liu S, Ye W, Wu J, Zhang X. Acetylcholinesterase deficiency decreases apoptosis in dopaminergic neurons in the neurotoxin model of Parkinson's disease. *Int J Biochem Cell Biol.* 2013;45(2):265-272.
53. Vegh C, Wear D, Okaj I, et al. Combined Ubisol-Q10 and ashwagandha root extract target multiple biochemical mechanisms and reduces neurodegeneration in a paraquat-induced rat model of Parkinson's disease. *Antioxidants.* 2021;10(4):563.
54. Mogi M, Togari A, Tanaka K-i, Ogawa N, Ichinose H, Nagatsu T. Increase in level of tumor necrosis factor- $\alpha$  in 6-hydroxydopamine-lesioned striatum in rats is suppressed by immunosuppressant FK506. *Neurosci Lett.* 2000;289(3):165-168.
55. Mogi M, Harada M, Kondo T, et al. Interleukin-1 $\beta$ , interleukin-6, epidermal growth factor and transforming growth factor- $\alpha$  are elevated in the brain from parkinsonian patients. *Neurosci Lett.* 1994;180(2):147-150.
56. Boka G, Anglade P, Wallach D, Javoy-Agid F, Agid Y, Hirsch E. Immunocytochemical analysis of tumor necrosis factor and its receptors in Parkinson's disease. *Neurosci Lett.* 1994;172(1-2):151-154.
57. Jung HW, Son HY, Minh CV, Kim YH, Park YK. Methanol extract of Ficus leaf inhibits the production of nitric oxide and proinflammatory cytokines in LPS-stimulated microglia via the MAPK pathway. *Phytother Res.* 2008;22(8):1064-1069.