

Biomedical Applications of Lanthanide Nanomaterials, for Imaging, Sensing and Therapy

Qize Zhang^{1,2,6}, Stephen O'Brien^{2,6}, Jan Grimm^{1,3,4,5}✉

1. Molecular Pharmacology Program, Memorial Sloan Kettering Cancer Center, New York, NY 10065, USA.
2. Department of Chemistry and Biochemistry, The City College of New York, 1024 Marshak, 160 Convent Avenue, New York, New York 10031, USA.
3. Department of Radiology, Memorial Sloan Kettering Cancer Center, New York, NY 10065, USA.
4. Department of Pharmacology, Weill Cornell Medical College, New York, NY 10021, USA.
5. Department of Radiology, Weill Cornell Medical College, New York, NY 10021, USA
6. Ph.D. Program in Chemistry, The Graduate Center of the City University of New York, New York, New York 10016, USA.

✉ Corresponding author: Prof. Jan Grimm, Department of Radiology, Weill Cornell Medical College, New York, NY 10021, USA.

© The author(s). This is an open access article distributed under the terms of the Creative Commons Attribution License (<https://creativecommons.org/licenses/by/4.0/>). See <http://ivyspring.com/terms> for full terms and conditions.

Received: 2021.07.30; Accepted: 2021.09.23; Published: 2022.01.01

Abstract

The application of nanomaterials made of rare earth elements within biomedical sciences continues to make significant progress. The rare earth elements, also called the lanthanides, play an essential role in modern life through materials and electronics. As we learn more about their utility, function, and underlying physics, we can contemplate extending their applications to biomedicine. This particularly applies to diagnosis and radiation therapy due to their relatively unique features, such as an ultra-wide Stokes shift in the luminescence, variable magnetism and potentially tunable properties, due to the library of lanthanides available and their multivalent oxidation state chemistry. The ability to prepare nanomaterials of relatively smaller sizes has increased the likelihood of use *in vivo*. In this review, we summarize the different emerging applications of nanoparticles with rare earth elements as the host or doped elements for biomedical applications in the past three to four years, especially in the area of imaging and disease diagnosis. Researchers have made progress in utilizing surfactants and polymers to modify the surface of lanthanide nanoparticles to enhance biocompatibility. At the same time, specific antibodies and proteins can also be conjugated to these nanoparticles to increase targeting efficiency for specific tumor models. Finally, in the near-infrared II imaging window, lanthanide nanoparticles have been shown to exhibit extraordinary bright emission, which is an exciting development for image-guided surgery.

Key words: Lanthanide Nanomaterials, Imaging, Sensing, Therapy

Introduction

This is a short review of the current use of lanthanide nanomaterials for biomedical applications. The word lanthanide is used colloquially over lanthanoid, which is the official IUPAC name. Collectively with Scandium and Yttrium, the term rare earth element (REE) is frequently used in geology, science and medicine; however, their relative natural abundance is not that scarce in most cases. The f-orbitals start with element 57, lanthanum, the first of the lanthanides and namesake of the elementary group. There are so many of these f-block elements (15, from Lanthanum to Lutetium) it is necessary for formatting/aesthetic reasons to place

them at the bottom of the periodic table, with the actinides. Their discovery spans the 19th century, while the emergence of their widespread utility spans the latter half of the 20th century until the present day. As we have learned to harness the unique physics and chemistry characterized by their f-orbital behavior, there have been several key applications that have revolutionized industries, including the development of phosphors for fluorescent/LED lighting [1] and the development of rare earth magnets, which now dominate the design of personal headphones, motors for electric/hybrid vehicles, wind turbines, and portable MRI scanners [2-4]. Since 1959, when the

Dutch-American physicist and Nobel laureate Nicolaas Bloembergen observed nonlinear up-conversion of lanthanides in the Near IR region, optical properties (photonics) research chiefly focused on semiconductors and electronic equipment [5]. However, in more recent times, and primarily through adaptation enabled by nanotechnology, significant achievements have been made in basic research of rare earth element chemistry for biomedical applications [6].

In general, molecular-level based imaging is increasingly used for disease diagnosis and guidance of surgery [7-14]. Among the most widely used *in vivo* applications are planar and tomographic fluorescence and bioluminescence imaging. However, despite their utility, these techniques are primarily restricted to pre-clinical use. Factors that have prevented translation from the bench to the bedside include depth-penetration considerations, regulatory issues, and toxicity of the lanthanides [15, 16]. A recent development in lanthanide element based near IR-II nanoprobe [17] successfully overcame the shortcomings of traditional fluorescence contrast agents by extending the imaging window closer to the near IR-II region (1000-2000 nm). In parallel, nanotechnology researchers dedicated to developing rare earth nanoprobe with improved surface modification, morphology, and size, have enabled increased function for diagnosis or targeting.

In terms of treatment, especially tumor treatment, due to the powerful optical properties of lanthanides, there are remarkable effects when combining them with agents designed for photothermal therapy (PTT) or photodynamic therapy (PDT). Hereafter, we discuss the development of lanthanide element-based nanomaterials in biomedicine, especially for tumor imaging and therapy. Due to several existing excellent reviews on the topic [18-23], we present here exciting recent developments in the past few years. Starting with lanthanide nanoparticle synthesis and surface modification strategies, we summarize what approaches have made them suitable for *in vivo* studies. Next, we evaluate how researchers have utilized the rare earths' unique properties to achieve specific goals in cancer diagnosis, Immunotherapy, chemotherapy, and imaging guide surgery. Lastly, we review applications other than cancer such as, bone imaging, blood vasculature imaging and COVID-19 detection.

Surface modification of lanthanide-based nanoparticles for *in vivo* studies

For pre-clinical nanomedical research, especially in inorganic metal/metal oxide nanoparticles, the

highest priority is to enhance biocompatibility. Most biomaterials are considered as foreign matter to the host, especially the inorganic materials, and will induce the rejection reaction. The successful design of an *in vivo* used material must include low toxicity, longer circulation time, and even biodegradable or smaller enough size for extraction from the glomerulus. Making the lanthanide nanomaterial more biocompatible through surface modification became a popular research field for material scientists: Liu et al. developed a novel inorganic oxide nanoprobe based on amine-functionalized tetragonal ultrasmall ZrO_2Ln^{3+} nanoparticles (< 5nm) synthesized through a simple solvothermal technique (Fig. 1C). To substitute the natural hydrophobic ligands on the surface of NPs, amine and phosphate groups were introduced for a ligand exchange reaction. They show the use of this hydrophilic Ln^{3+} -based long-lived luminescence as a sensitive, time-resolved fluorescence resonance energy transfer (FRET) nanoprobe to identify avidin with a detection limit as low as 3.0 nM [24]. Fischer *et al.* reported synthesizing a series of sub-15 nm alkaline-earth lanthanide fluoride upconversion nanoparticles with different doping combinations ($M_{1-x}Ln_xF_{2+x}$, $MLnF$) (Fig. 1B). Then, CaF_2 shells, which have earlier been demonstrated to be biocompatible, are employed for passivation to increase the upconversion performance of these nanoparticles by more than five orders of magnitude while also enhancing their biocompatibility [25]. Zhijie Wang et al. presented a facile one-pot procedure for producing highly hydrophilic and biocompatible $NaGdF_4:Yb^{3+}/Er^{3+}$ and $NaGdF_4:Yb^{3+}/Tm^{3+}$ nanocrystal by thermal hydrolysis of lanthanide-oleate precursors and sodium fluoride by added ω -dicarboxylic polyethylene glycol (HOOC-PEG-COOH) (Fig. 1D).

Moreover, $NaGdF_4:Yb^{3+}/Er^{3+}$ nanocrystals have been employed effectively as dual-modal imaging contrast agents for optical and MRI imaging *in vivo* [26]. In the recent work by Shane Plunkett et al., the procedure was improved by using Janus-type dendrimers, which have individual carboxylates on the surface of the ligand for conjugation to $NaYF_4$ -based nanocrystals, doped with Yb^{3+} (20%) and Er^{3+} (20%), neutral polyethylene glycol (PEG) groups for water solubility. They also encapsulate a pH-sensitive dye, Eriochrome, as the center of the dendrimer. These Janus-dendrimers modified $NaYF_4$ based nanocrystals were excellent vascular markers, enabling for depth-resolved mapping of specific capillaries in the mice brain achieved a depth of 1000 μm under continuous wave (CW) stimulation with a relatively low energies level of no more than 20 mW (Fig. 1A) [27]. Another exciting aspect of lanthanide

nano oxides is unusual water-solubility, which even could be used to functionalize other materials to render them hydrophilic. In Wen Luo *et al.*'s recent work, they doped the Titanium-Oxo Cluster with Eu(III), Tb(III), and Yb(III) to form water-soluble lanthanide-titanium-oxo clusters (LnTOCs) which could quickly disperse in aqueous media to form a stable solution with aggregation of the clusters. The photocatalytic behavior, fluorescence sensing, and fluorescent labeling have all been retained and verified through in vitro cell imaging (Fig. 1E) [28].

Cancer imaging and therapy

Ren *et al.* developed Er-based lanthanide

nanoparticles NaErF₄:2.5 %Ce@NaYbF₄, coupled with Dye-brush polymer (Dye-BP) to promote the ⁴I_{13/2}→⁴I_{5/2} transition, achieved 675-fold enhancement at 1525 nm wavelength near the IR II imaging window. They further conjugated a tumor-targeting angiopep-2 peptide, which could target the glioma in a mice model. Under the guidance of this near IR luminescence probe, they successfully removed the glioma from the mouse brain (Fig. 2A) [29]. Peroxynitrite(ONOO⁻) is over-expressed in the tumor-microenvironment. Zhao *et al.* developed a lanthanide-based β-NaYF₄@NaYF₄:1%Nd NIR-II nanosensor which attached an ONOO⁻ responsive dye MY-1057. They utilize the specific energy transfer

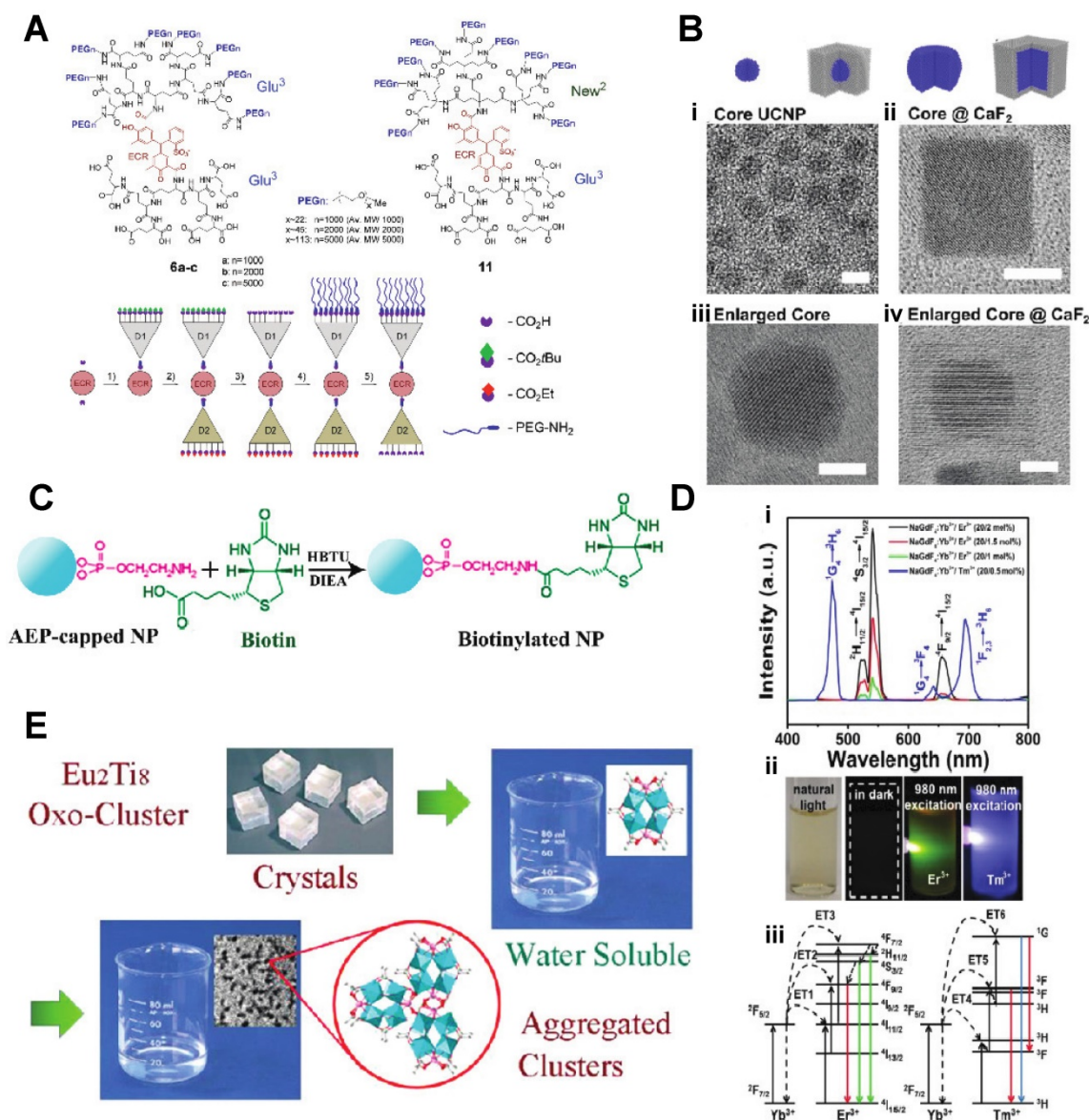


Figure 1: A) Janus-type dendritic ligands: Structures and a cartoon of the synthetic sequence illustrating assembly of compound 11 as an example. B) Schematics and corresponding transmission electron microscope (TEM) images (i-iv) C) The covalent coupling of biotin with NPs can be achieved in DMF solution by use of HBTU and DIEA as coupling reagents. D) (i) Upconversion spectra of NaGdF₄:Yb³⁺/Er³⁺ nanoparticles and NaGdF₄:Yb³⁺/Tm³⁺ nanoparticles excited with a 980 nm laser. (ii) The digital photographs of colloidal solution of NaGdF₄:Yb³⁺/Er³⁺ (20/2 mol) and NaGdF₄:Yb³⁺/Tm³⁺ (20/0.5 mol) nanoparticles in water under natural light, in dark and excited with a 980 nm laser, respectively. (iii) The energy levels diagrams and corresponding transfer mechanism of Yb³⁺ to Er³⁺ and Yb³⁺ to Tm³⁺. E) Water-Soluble Lanthanide-Titanium-Oxo Cluster [10-14].

between the ONOO⁻ to the MY1057 dye and finally excite the β -NaYF₄@NaYF₄:1%Nd nanosensor in the NIR-II region. With the NIR light from the nanosensor, tumor lesions (Hepatocellular Carcinoma) could be distinguished from normal tissue (Fig. 2C) [30]. PDT and CDT (chemodynamic therapy) is usually limited by glutathione and hypoxia in the tumor. Jiating Xu et al. developed a copper/manganese silicate nanosphere (CMSN)-covered by Yb³⁺/Er³⁺/Tm³⁺ shell nanoparticles which not only provide upconversion (UC) and downconversion (DC) emissions for NIR (1000 nm – 1700 nm wavelength, the significance of which is explained later in this section) imaging but also contribute to enhancing the potential for PDT through promoting the O₂ to singlet ¹O₂ by the NIR light emitting from the lanthanide element (Fig. 2E) [31].

Since some of the lanthanides are also

paramagnetic, they can be used as MRI contrast agents. Zhang *et al.* synthesized Lanthanide–Cyclen–Camptothecin nanocomposites encapsulating Gd(III) and Yb(III) complexes and the anticancer drug camptothecin into a micelle, offering real-time NIR / MR dual model imaging and chemotherapy (Fig. 2B, D) [32]. Lanthanide nanoparticles could be used as a platform incorporated with other nanomedicines for theranostic approaches. Xu *et al.* integrated CuS nanoparticles (PTT agents) and g-C₃N₄ QDs (PDT agents) on silica-coated NaGdF₄:Yb,Tm@NaGdF₄:Nd,Yb UCNPs. When they applied an 808 nm laser to this nanocomplex, the lanthanide UCNP would shift the light to UV/vis region and simultaneously active the PPT and PDT agent to achieve the effect of combination therapy [33]. Similarly, another group of researchers utilized the same material and 808 nm laser for image-guided tumor resection surgery by

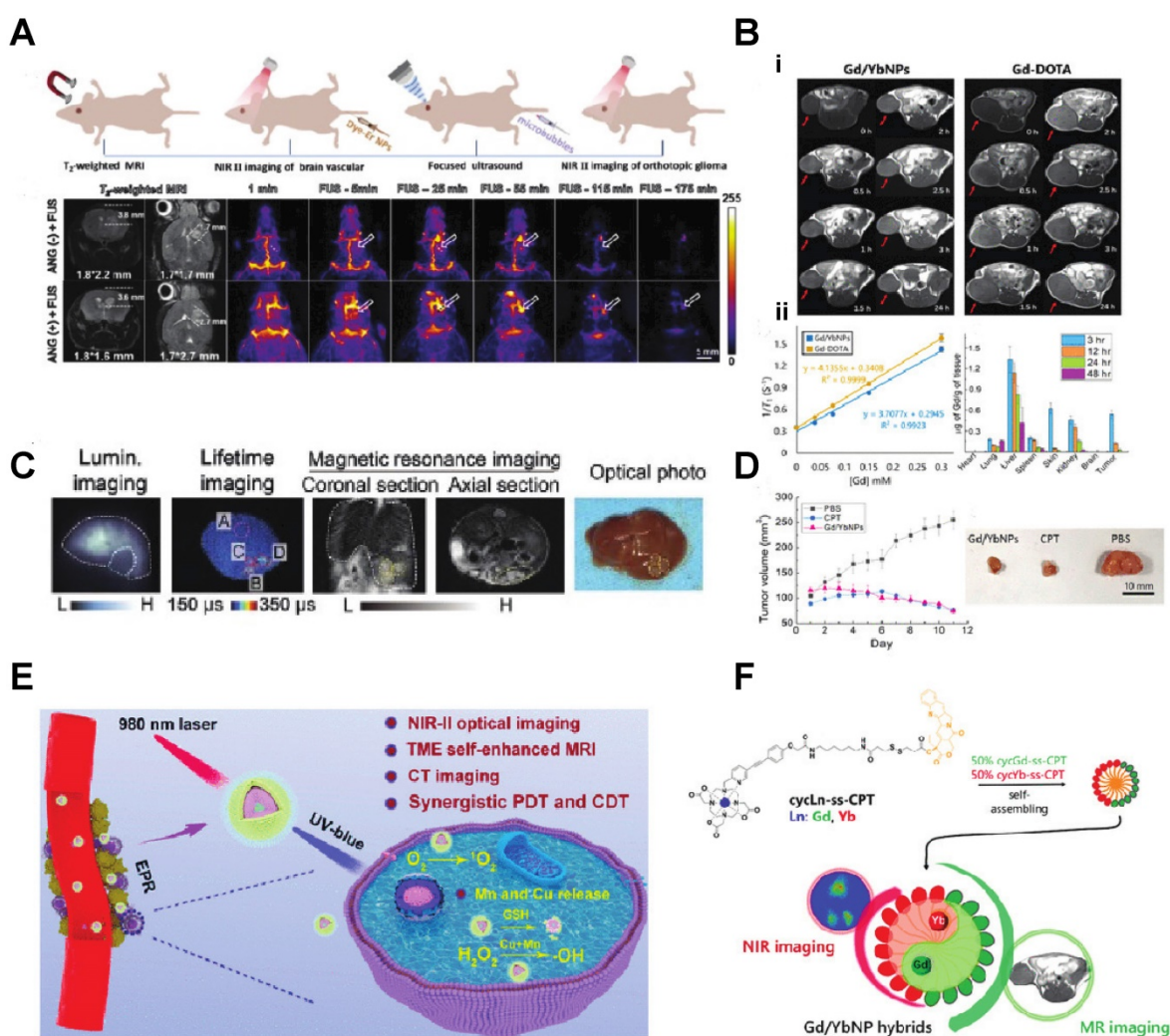


Figure 2: **A)** Schematic illustration of T₂-weighted magnetic resonance imaging (MRI), and noninvasive NIR IIb fluorescence imaging of a deep-seated and small-sized orthotopic glioma under the assistance of focused ultrasound (FUS) **B, D)** (i) *In vivo* T₁-weighted MR images of the mice bearing HeLa xenograft from 0 to 24 h after the injection of Gd/YbNPs and Gd DOTA (control). (ii) Plots of 1/T₁ vs. [Gd] to determine r₁ of Gd-DOTA and Gd/YbNPs hybrid nanoparticles. **C)** Noninvasive intensity-based imaging, lifetime-based imaging of a mouse bearing multiple HCC lesions and optical photo of the dissected liver. **E)** Theranostic mechanism of PEG/ LDNPs@CMSNs for TME and NIR laser co-enabled PDT/CDT and trimodal bioimaging **F)** Lanthanide–Cyclen–Camptothecin Nanocomposites for Cancer Theranostics Guided by Near-Infrared and Magnetic Resonance Imaging [15–19].

doping Ce^{3+} . They achieved an 11-fold enhancement of the NIR-II emission above 1500nm and successfully removed tumors in a colorectal cancer mice model [34]. Doping lanthanide elements into polymer nanoparticles is another strategy for cancer imaging or therapy since most organic/polymer nanoparticles can degrade over specific pH environments. Miao Feng et al. introduced hydrophobic $NaGdF_4: 2\%Nd@NaLuF_4$ nanocrystals ultrasmall nanoparticle and doxorubicin into a 300 nm pH-sensitive degradable mPEG-PLGA nanomicelles for imaging and chemotherapy application (Fig. 3A) [35]. While these approaches all used nontargeted agents, lanthanide nanoparticles were also targeted to a specific cancer model for imaging when coupled with targeted peptides. Jingxue Cao et al. designed a $\alpha v\beta 3/\alpha v\beta 5$ and aminopeptidase-N-receptor targeting

peptides conjugated to $NaYF_4:Yb$ nanoparticle as NIR-II nanoprobe for *in vivo* imaging of lung cancer (Fig. 3C) [36]. To maximally lower the toxicity of the inorganic lanthanide nanoparticle *in vivo*, an excretable lanthanide nanoprobe for imaging and surgical guidance in the NIR-II window has been developed by Daifen Li and his colleagues (Fig. 3B). They encapsulate ultra-small hydrophobic $NaYF_4:Nd$ 7% into bio-degradable liposomes. This strategy can quickly clear their particle via the kidneys after intravenous injection with a half-life of 23.0 h for the liver and 14.9 h for the spleen [37]. Metal-organic frameworks (MOFs) are posited as excellent photosensitizers for photodynamic therapy (PDT) in cancer therapy. However, the efficacy of the MOFs PDT has been limited by the tissue penetration of the visible excitation light (Fig. 3F).

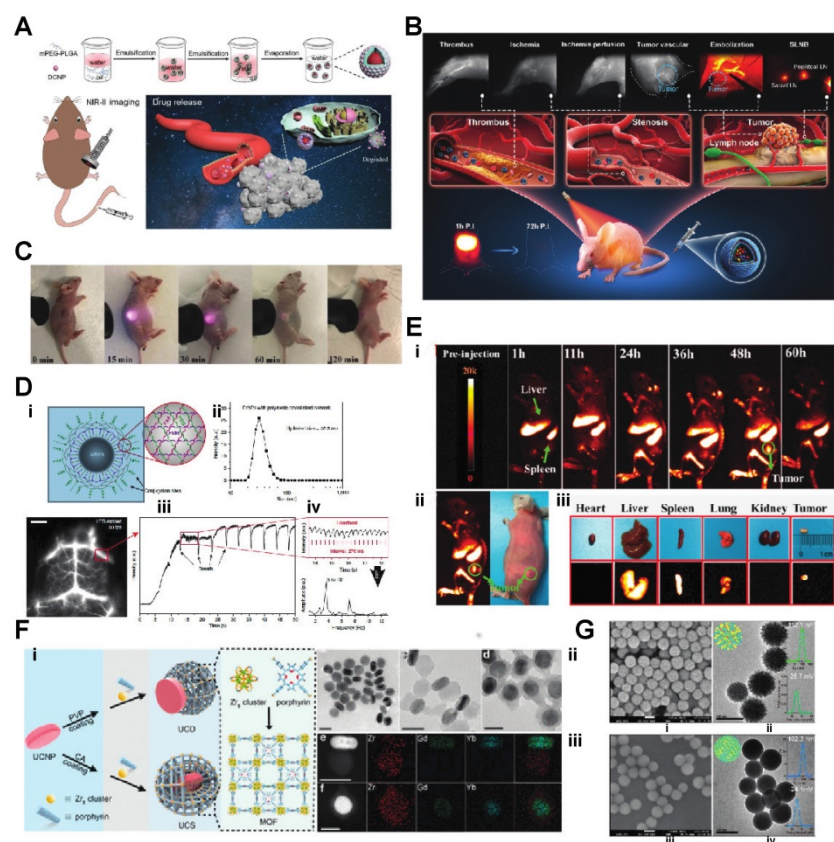


Figure 3: **A)** Schematic illustration of the bioapplication of DMDNs(DOX@mPEG-PLGA@DCNP nanoparticles). **B)** Schematic illustration of excretable lanthanide nanoparticles for multifunctional biomedical imaging and surgical navigation in the second near-infrared window. **C)** Treated group: tumor-bearing mice injected with UCNP@P- RGD-NGR. Digital photos were taken at 0, 15, 30, 60, 120 min after injection under 980 nm excitation. **D)** i), Schematic illustration of the hydrophilic ErNPs with cross-linking polymeric layers and amine groups on the surface as conjugation sites. ii), DLS spectra of hydrophilic ErNPs with polymeric cross-linked network and NIR-IIb cerebral vascular image (left) by intravenous injection of 200 μ l ErNPs (40 mg ml⁻¹) and excitation by a 970 nm LED (30 fps). The luminescence intensity of an inferior cerebral vein was plotted as a function of time (iii), showing the cardiac cycles (iv) with a heartbeat frequency of 3.67 Hz by fast Fourier transformation (FFT, lower right). Scale bar, 5 mm **E)** i) Digital photograph of tumor-bearing mouse and *in vivo* NIR-IIb fluorescent imaging (the green circle indicated the tumor site). ii, iii) Digital photographs of the isolated organs/ tumor and the corresponding *ex vivo* NIR-IIb imaging, respectively. **F)** i) Schematic illustration of the synthesis of UCDS and UCSs through the conditional surface engineering of UCNPs. The structure of porphyrinic MOFs is illustrated in the right column. ii)TEM images from left to right is UCNPs, UCDS, and UCSs. Scale bar, 50 nm. iii) Elemental mapping images of a single (left to right) UCDS and (f) UCS. Scale bar, 50 nm. **G)** (i-iv) Morphology of NdIII-IP virus-like nanodrugs and IP nanospheres observed by SEM, TEM [21-29].

When coupled with upconversion lanthanide nanoparticles, a more penetrating NIR light source outside the body can be used. The NIR light can be transferred to visible light via upconversion lanthanide nanoparticles inside the body, which could further excite the MOFs to generate singlet oxygen and significantly increase PDT efficacy [38]. As an alternative to upconversion, one can also manipulate lanthanide nanoparticles for a down-converting application. Downconversion means shifting the UV/visible (200-400nm) or near IR (800-1000nm) to longer red light (600-700nm) or far IR region (beyond 1500 nm), respectively. Hongjie Dai's group at Stanford designed a biocompatible cubic-phase (α -phase) erbium-based lanthanide nanoparticle attached with anti-PD-L1 antibodies that exhibits bright downconversion emission at \sim 1,600 nm for dynamic imaging of cancer immunotherapy in mice (Fig. 3D) [39]. Another group successfully converted a 980 nm laser emission to 1500 nm (NIR-II region) via poly(acrylic acid) (PAA)-modified $NaLnF_4:40Gd/20Yb/2Er$ nanorods for cancer metastasis and vessel imaging (Fig. 3E) [40]. Downconverting technology could even be applied to nuclear imaging, especially Cerenkov imaging. A europium oxide nanoparticle was utilized to shift blue Cerenkov radiation to the more

penetrative red-light region, which significantly enhanced the Cerenkov light for lymph node and tumor imaging [41, 42].

Researchers have also designed rare-earth nanoparticles with different morphologies, resulting in unexpected and interesting effects under certain circumstances. Yang Li et al. created a virus-like nanoconjugate that included a NIR-II fluorescence agent (IR825), a chemotherapy drug (pemetrexed, PEM), and a lanthanide element (Nd(III))(Fig. 3G). The spike-like poly(ethylene glycol) shell protected the nanoparticle from immune clearance and enhanced the *in vivo* circulation time [43]. Xu et al. produced two-dimensional ultrathin lanthanide oxyiodide nanosheets for anticancer drug delivery. Those nanosheets exhibit remarkable drug loading capacity (300 wt.%) compared to other nanomaterial morphologies [44]. The unique paramagnetic property of gadolinium makes it an excellent MRI contrast agent among rare earth elements. Traditionally, Gd is usually chelated to small molecules. However, material scientists could also make a nanoparticle that uses Gd as the main or doped component. With the benefit of nanotechnology, the Gd nanoparticle could reach the targeted area, relying on the EPR effect, or the particle could be encapsulated with other functional elements to achieve different imaging modalities. Ye Kuang and colleagues doped Gd into HfO₂ to create a Gd₂Hf₂O₇ nanoparticle that utilizes the Gd as an MRI contrast agent and Hf as a radiosensitizer. They surface modified the nanoparticle with RGD peptides and loaded the particle with cisplatin to create a potential MRI-guided combined chemo-/photothermal-/radiotherapy nanoplatform for drug-resistant tumors [45]. McLeod *et al.* incorporated a Gd(III) complex into a Zr-based MOF (Metal-organic framework) through solvent-assisted ligand incorporation (SALI) and tested the combined MOFs as a potential MRI contrast agent [46]. By combining Gd and barium titanate, researchers Peng Wang et al. created a dual MRI and X-ray imaging agent [47]. Meanwhile, Yao Cai *et al.* labeled human heavy chain ferritin with Gd for enhanced MRI tumor imaging applications [48]. The most abundant lanthanide element, Cerium, is another potential candidate for biomedical applications such as sensors or imaging platforms. With the surface oxygen vacancies, CeO₂ has been utilized as a contrast agent or carrier for another rare earth element for imaging purposes. CeO₂ also presents native fluorescence due to the presence of Ce³⁺ [49]. Meanwhile, CeO₂ can also be used as a convenient host lattice with which to combine with another lanthanide element to achieve more imaging modalities. Anne et al. doped

ytterbium and gadolinium into the CeO₂ nano cubes for MRI and Near IR imaging on cancer cells [50]. Chulun Shao et al. utilize the abundant oxygen vacancies on the CeO₂ surface and integrate the Gd for DCE-PWI (dynamic contrast-enhanced perfusion-weighted imaging) MRI [51]. Since lanthanide elements are in the d-block of the periodic table, they are also considered as high atomic number elements, which usually provide a good contrast for X-ray imaging. Zuwu Wei et al. developed a hollow CeO₂-ZrO₂ hybrid nanoplatform labeled with Gd for MRI/CT imaging and drug (Dox) delivery for heterotopic, subcutaneous human liver cancers [52].

Radiotherapy of ¹⁷⁷ Lutetium

Lutetium is a unique member of the lanthanide family since one of its isotopes, Lutetium 177, intrinsically has electron and high energy gamma emission, making it a good candidate for targeted radiotherapy. ¹⁷⁷Lu has been used as a radiotherapy agent for a long time in the literature [53], and more recently has been chelated to small molecule peptides or prostate-specific membrane antigen (PSMA) inhibitors for targeted radiotherapy of neuroendocrine tumors and prostate cancers. Here, we touch on a subsection of the unique applications of ¹⁷⁷Lu combined nanotechnology in recent years. Rodrigo et al. recently synthesized an Eu-doped Mesoporous SiO₂ labeled with ¹⁷⁷Lu for HT-29 colorectal cancer imaging and radiotherapy. The author cleverly uses the beta emission from the ¹⁷⁷Lu for a therapy study, and the gamma emission for SPECT imaging [54]. Another group at the University of Wisconsin (Yu *et al.*) developed a facile approach to assembling ¹⁷⁷Lu-Porphyrin-PEG-Nanocomplexes which combined fluorescence imaging, photodynamic therapy with positron emission tomography imaging, internal radiotherapy and specifically targeted the tumor cell mitochondria [55]. Metal nanoparticles could also be labeled with ¹⁷⁷Lu for therapy study. Pei Pei et al. chelated gold nanoclusters with ¹⁷⁷Lu and ^{99m}Tc, and could strengthen the radioisotope therapy efficiency and induce anticancer immunity by activating dendritic cells [56].

Biosensing and other biomedical applications of lanthanide nanomaterials

Based upon excellent optical features, such as low background fluorescence, and high sensitivity, lanthanide nanomaterials can be applied to various biosensing areas, such as pH detection, essential physiological ions, ROS detection, temperature monitoring or even COVID-19 testing. A current, pandemic related application of lanthanide

nanoparticles is the utilization of self-assembled LNPs (lanthanide-doped polystyrene nanoparticles) as a fluorescent sensor to detect anti-SARS-CoV-2 IgG (Fig. 4C) [57]. Inflammation imaging has become, next to cancer imaging, an essential diagnostic tool for disease detection. Zhao et al. developed an ultra-small glutathione (GSH)-modified lanthanide downconversion nanoparticle system that could precisely target and detect ROS in the inflammation through a cross-linking strategy (Fig. 5C). Light and heat have always been a pair of inseparable factors.

The intracellular thermal energy could affect the energy transfer of the outer shell electron of the lanthanide element. The outer shell electron configuration usually determines the light emission intensity of the rare earth element. Piñol *et al.* employed this theory to develop innovative Ln³⁺ doped polymeric micelles, which could achieve real-time 2D mapping of the intracellular temperature of breast metastatic adenocarcinoma cells (Fig. 5B) [59].

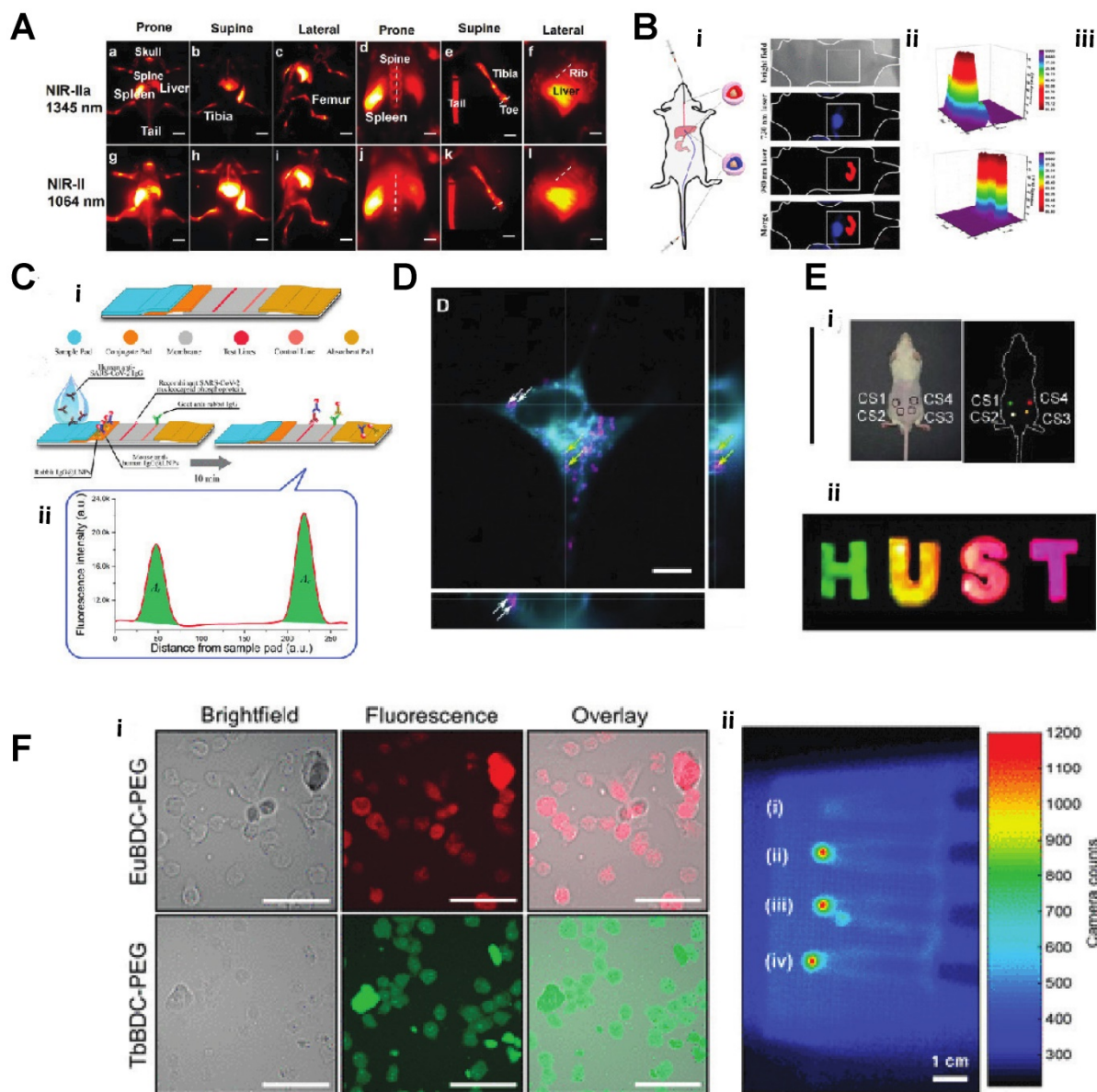


Figure 4: **A**) *In vivo* NIR-II imaging of C57BL/6 mice ($n = 3$) bone in the NIR-IIa 1345 nm and NIR-II 1064 nm windows. *In vivo* fluorescence of the whole body in (a) prone, (b) supine, and (c) lateral. **B**) Schematic diagram of a nude mouse by intragastric administration and intravenous injection with cssEr-PEG and cssNd-PEG aqueous dispersions, respectively. **C**) Design and fabrication of the developed assay. (i) Lateral flow test strip. (ii) Assay. **D**) Projections of a z-stack of images of a HeLa cell incubated with ECP-NPs (PMMA-COOH 10% at 40% [Eu(tta)3phen]). ECP-NPs are shown in magenta and the cell membranes in turquoise (costained with DiD). **E**) Photograph of papery patterns under 1540 nm excitation (power density: 10 W/cm²). (i) *In vivo* multiplexing upconversion imaging with aqueous CS1-4 nanoparticles under 1540 nm excitation. Bright-field (left) and dark-field (right) (power density: 0.5 W/cm²). (ii) **F**) Luminescence cell imaging of Ln-nMOFs. (above) Confocal images of the CT26 cells incubated with Eu-BDC-PEG and Tb-BDC-PEG nMOFs for 3h. green and red fluorescence represent the emission from Tb³⁺ and Eu³⁺ the PEGylated nMOFs, respectively. Scale bars correspond to 50 μ m. (below) *In vitro* RLI of CT26 cell pellets under X-ray excitation of (i) blank cells and cells incubated with (ii) EuBDC-PEG, (iii)TbBDC-PEG, and (iv) EuTbxBDC-PEG nMOFs for 24 h [30-36].

Similarly, the Mott-Seitz model could describe the light and temperature relationship as equation (1),

$$\text{Mott-Seitz Model } \tau(T) = \frac{\tau_0}{1+C|\exp(-\Delta E/kT_b)|} \quad (1)$$

where T is the thermodynamic temperature in K, T_0 is radiative lifetime, E the activation energy of the thermal-quenching effect, and k_b is the Boltzmann constant. By applying this theory, Yuen Pan et al. created $\text{Eu}^{2+}/\text{Eu}^{3+}$ co-doped Sc_2O_3 nanoparticles, which precisely monitor the temperature changing through the light emission intensity. The unique part of this study was using Eu^{2+} as the primary lattice host rather than Eu^{3+} . Due to the lack of complete 5s and 5p orbitals protection, the $\text{Eu}^{2+} 4f_7$ electron configuration exhibits more sensitivity to the exterior environment, such as temperature [60]. Jianan Liu et al. integrate the upconversion nanoparticle with a commercial K^+ indication into a hollow mesopores silica nanoparticle to create a potassium ion sensor for *in vivo* potassium imaging. By irradiating the NIR light to the upconversion nanoparticle, the NIR light can be transferred to UV light, further activating the K indicator to detect the intracellular K^+ level [61]. Chantal Galaup et al. evaluated a possibility of luminescent lanthanide material that could detect ROS in the context of Alzheimer's disease [62]. Cyrille Charpentier et al. designed a particular ligand that could boost the brightness of the terbium nanoparticles and link the nanoparticle to different biological molecules to form specific biosensors to detect biotinylated dyes or even epidermal growth factor receptors (EGFR) [63]. For more biomedical applications, Shuqing He *et al.* found a unique property of DSPE-mPEG encapsulated rare-earth-doped nanoparticles, which surprisingly exhibited a high affinity to the bone. They used this particle for dedicated imaging of the bone and lymph nodes (Fig. 4A). The mechanism of this bone affinity is mainly caused by the hydroxyapatite mineral binding ability and white blood cell uptake [64]. Rather than laser excitation, lanthanide nanoparticles could also be excited by ionization radiation, like Cerenkov radiation, X-rays etc. [41, 42]. Neufeld *et al.*, using X-ray as a radiation source, successfully excited nanoscale Ln-MOFs (Ln = Eu or Tb) that emit at 400-700 for radioluminescent cell imaging (Fig. 4F) [65]. Another benefit of lanthanide nanoparticles is the long luminescent half-life, eliminating the influence of autofluorescence from body tissue. Andreas Reisch's group developed poly(methyl methacrylate)-based particles doped with a high percentage of europium complexes. By utilizing these rare earth nano complexes, they achieved background-free single-molecule imaging in live cells (Fig. 4D) [66]. By adjusting the doping percentage of

different lanthanide element components, the emission of the lanthanide nanoparticle could easily be turned into the desired range. With this feature, the same wavelength excitation source could be used to achieve different emission wavelengths for multichannel or multiplexed imaging (Fig. 4B, E) [67, 68].

In an innovative and unusual exploration, Zhiming Deng *et al.* fed silkworms with $\text{NaYF}_4:\text{Gd}^{3+}/\text{Yb}^{3+}/\text{Er}^{3+}/\text{SiO}_2$ nanocrystals to produce a NIR-II fluorescent silk fibroin-based material (Fig. 5B). They further bioengineered the upconversion silk by attaching it to an implantable stent for mice to verify the potential for *in vivo* applications [69].

Toxicity remains a primary challenge for *in vivo* inorganic nanomedicine, and the lanthanide nanoparticles are no exception [70]. Gadolinium chelates are frequently used as MRI contrast agents and recently have been identified as causing renal impairment through slowly developing nephrogenic systemic fibrosis (NSF) in humans that had received certain gadolinium-based MR contrast agents [71]. The FDA also issued a safety warning for gadolinium-based contrast agents chelated by linear chelators such as DTPA after observations that Gd could be retained inside the body, even in the brain, for months or even years after the MRI scan. Other studies have shown there is nephrotoxicity of gadolinium-based contrast agents [72]. Meanwhile, other lanthanide ions, like Tb^{3+} Pm^{3+} or Eu^{3+} could bind to the Ca^{2+} binding sites of the intestinal membrane, affecting ion channel transportation, leading to toxicity. Sc^{3+} , Y^{3+} , and La^{3+} have been found to bind to globulin and DNA, which could cause damage [73]. Encapsulating lanthanides into rapidly excretable nanoparticles and/or coating with a biocompatible polymer which decreases the time of the lanthanide inside the body, can minimize toxicity. Dana M. et al. tested their $\text{NaGdF}_4:\text{Tm}^{3+} \text{Yb}^{3+}$ nanoparticles on a variety of cancer cell lines and *C.elegans*. detected no toxicity over a wide concentration range [74]. For the same kind of particle, Huaiyong Xing et al. showed after seven days post-injection to the mice, the $\text{NaGdF}_4:\text{Tm}^{3+}$ ultra-small nanoparticle could be excreted into feces and urine [75]. Jin Yan et al. developed a safe peptide-lanthanide nanocluster for cancer drug delivery. They functionalized 5 nm lanthanide cores with two types of targeting peptide, which increased the tumor-targeting efficacy and decreased the toxicity of the nano cluster [76]. Based on the issue of toxicity and the development of strategies to eliminate concerns with introducing lanthanides into the body, the design of lanthanide nanomaterials for biomedical applications continues to focus on developing

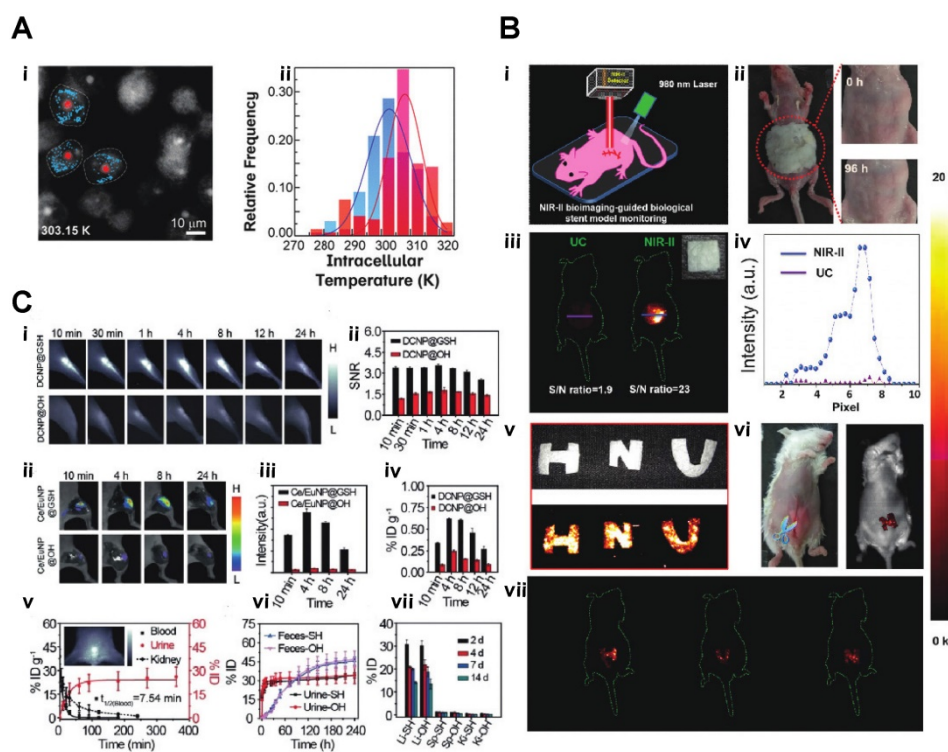


Figure 5: **A)** Microscopy images (recorded in the Eu^{3+} channel) of the MDA-MB-468 cells incubated with DNPD-based polymeric micelles. i) The blue and red points mark, respectively, the locations used for temperature determination of the darker and brighter regions. ii) Temperature histograms obtained from the selected points indicated in panels **B)** i) A schematic illustration of the *in vivo* NIR-II imaging of the implanted biological stent model made from the hybrid silks. ii) Allergy test of a mouse by directly exposing the abdomen skin to the hybrid silks for 96 h. iii. *In vivo* UC/NIR-II imaging of the subcutaneously implanted stent model with a square shape made from the hybrid silk under 980 nm laser excitation. iv) The corresponding fluorescence intensity. v) A digital photograph and *in vitro* phantom NIR-II imaging of other phantom biological stents with “H”, “N”, and “U” shapes. vi and vii. *In vivo* NIR-II imaging after subcutaneously implanting the models in the mouse abdomen under the excitation of a 980 nm laser. **C,** i) NIR-II fluorescence bioimaging of the acute local epidermal inflammation with various nanoprobes. ii) SNR as a function of time in the inflamed area. iii) *In vivo* I-PEM bioimaging. iv) I-PEM signal intensity as a function of time in the inflamed area with various nanoprobes. v) ICP-MS results of the retention of various nanoprobes in the inflamed area. vi) Pharmacokinetics of DCNP@GSH in blood and urine excretion after iv) Injection. ICP-MS results of kidney biodistribution as a function of time. Insert shows NIR-II bioimaging of the bladder. vii) Excretion of DCNP@GSH and DCNP@OH in urine and feces as a function of time. h) Biodistribution of DCNP@GSH and DCNP@OH nanoprobes in the liver (Li), spleen (Sp), and kidney (Ki) after two weeks [37–39].

ultra-small and clearable nanoparticle approaches, while still seeking to take advantage of the available optical properties to enhance sensitivity for disease diagnosis and future innovation in treatment of disease [35, 37, 41].

Conclusion and Prospects

Biomedical imaging is a multidisciplinary research field involving physics, chemistry, molecular biology, photonics and materials science. In this rapidly developing research field, new materials, new technologies, and new applications arise quickly. Due to the long time for clinical translation, it is essential that biomedical researchers become aware of new materials opportunities that enable improved sensitivity in diagnostic medicine, and increased efficacy/reduced toxicity in therapeutics. This review provided a short summary of the applications of lanthanide nanomaterials published over the past few years, including cell imaging, living tumor diagnosis, lymphatic and vascular imaging, and imaging guide surgery. Given the extensive literature on this global research topic, it is difficult to cover all aspects of rare

earth nanomaterial science and biomedical applications. Lanthanide luminescent nanomaterials have made outstanding contributions to the field of biomedicine in the past few decades, mainly due to the apparent advantages of rare earth luminescent materials, such as stable photochemical properties, negligible photobleaching, and high fluorescence to noise ratio. The excitation light wavelength is in the ideal biological window (NIR region), which has better penetration, no damage to the normal tissue and high sensitivity. Because of the unique properties of rare earth luminescent materials, they could provide advantages that other probes cannot achieve and a valuable technical method to biologists and physicians. Optical imaging of rare earth materials is essential for various technologies required for modern bioanalysis and bioimaging. It has allowed for the creation of unusual nanosensors based on the unique properties of the lanthanides. Overall, lanthanide-based agents have shown remarkable application prospects in fluorescence imaging, medical diagnosis, and treatment.

Acknowledgments

This review was supported in part by the NIH Core Grant P30 CA008748 and an NCI grant CA183953. S O'B. is grateful for support from a PSC-CUNY grant. Q. Z. is grateful to the CUNY Graduate Center for a Dissertation Year Fellowship. This review is dedicated to the memory of Sanjiv "Sam" Gambhir (Stanford University), who was an important mentor to many of us and a true visionary in our field. It is also dedicated to the memory of Moritz Kircher (Dana Farber Cancer Center), who founded this journal, emphasizing his broad influence in the nanoparticle field and who was a friend to many of us. Both these brilliant minds left us way too early in the fatal year of 2020. We will miss them both.

Competing Interests

The authors have declared that no competing interest exists.

References

- Spies E, Bruning A, Gack S, Ulbricht B, Spring H, Trefz G, et al. Cathepsin B activity in human lung tumor cell lines: ultrastructural localization, pH sensitivity, and inhibitor status at the cellular level. *J Histochem Cytochem.* 1994; 42: 917-29.
- Ronda CR, Jüstel T, Nikol H. Rare earth phosphors: fundamentals and applications. *Journal of Alloys and Compounds.* 1998; 275-277: 669-76.
- Coey JMD. Perspective and Prospects for Rare Earth Permanent Magnets. *Engineering.* 2020; 6: 119-31.
- K.H. Jürgen Buschow RWC, Merton C. Flemings, Bernhard IIschner, Edward J. Kramer, Subhash Mahajan, Patrick Veyssi re. *Encyclopedia of Materials: Science and Technology*, Elsevier.; Elsevier Wordmark. 2001.
- Bloembergen N. Solid State Infrared Quantum Counters. *Physical Review Letters.* 1959; 2: 84-5.
- B nzli J-CG. Lanthanide Luminescence for Biomedical Analyses and Imaging. *Chemical Reviews.* 2010; 110: 2729-55.
- Chi C, Du Y, Ye J, Kou D, Qiu J, Wang J, et al. Intraoperative imaging-guided cancer surgery: from current fluorescence molecular imaging methods to future multi-modality imaging technology. *Theranostics.* 2014; 4: 1072-84.
- Massoud TF, Gambhir SS. Molecular imaging in living subjects: seeing fundamental biological processes in a new light. *Genes Dev.* 2003; 17: 545-80.
- Massoud TF, Gambhir SS. Integrating noninvasive molecular imaging into molecular medicine: an evolving paradigm. *Trends Mol Med.* 2007; 13: 183-91.
- Frangioni JV. New technologies for human cancer imaging. *J Clin Oncol.* 2008; 26: 4012-21.
- Hu Z, Qu Y, Wang K, Zhang X, Zha J, Song T, et al. In vivo nanoparticle-mediated radiopharmaceutical-excited fluorescence molecular imaging. *Nature Communications.* 2015; 6: 7560.
- Zhang Z, Cai M, Bao C, Hu Z, Tian J. Endoscopic Cerenkov luminescence imaging and image-guided tumor resection on hepatocellular carcinoma-bearing mouse models. *Nanomedicine: Nanotechnology, Biology and Medicine.* 2019; 17: 62-70.
- Yang J, Zhao C, Lim J, Zhao L, Tourneau RL, Zhang Q, et al. Structurally symmetric near-infrared fluorophore IRDye78-protein complex enables multimodal cancer imaging. *Theranostics.* 2021; 11: 2534-49.
- Yang J, Wang T, Zhao L, Rajasekhar VK, Joshi S, Andreou C, et al. Gold/alpha-lactalbumin nanoprobes for the imaging and treatment of breast cancer. *Nat Biomed Eng.* 2020; 4: 686-703.
- Te Velde EA, Veerman T, Subramaniam V, Ruers T. The use of fluorescent dyes and probes in surgical oncology. *European journal of surgical oncology : the journal of the European Society of Surgical Oncology and the British Association of Surgical Oncology.* 2010; 36: 6-15.
- Kobayashi H, Ogawa M, Alford R, Choyke PL, Urano Y. New Strategies for Fluorescent Probe Design in Medical Diagnostic Imaging. *Chemical Reviews.* 2010; 110: 2620-40.
- Yi Z, Luo Z, Qin X, Chen Q, Liu X. Lanthanide-Activated Nanoparticles: A Toolbox for Bioimaging, Therapeutics, and Neuromodulation. *Accounts of Chemical Research.* 2020; 53: 2692-704.
- Lo 'ic J. Charbonnie' re, † Niko Hildebrandt, Raymond F. Ziessel, and Hans-Gerd Lo 'mannsro 'ben. Lanthanides to Quantum Dots Resonance Energy Transfer in Time-Resolved Fluoro-Immunoassays and Luminescence Microscopy. *J AM CHEM SOC.* 2006; 128: 12800-9.
- Smith BR, Gambhir SS. Nanomaterials for In Vivo Imaging. *Chem Rev.* 2017; 117: 901-86.
- Dong H, Du S-R, Zheng X-Y, Lyu G-M, Sun L-D, Li L-D, et al. Lanthanide Nanoparticles: From Design toward Bioimaging and Therapy. *Chemical Reviews.* 2015; 115: 10725-815.
- B nzli G. Lanthanide Luminescence for Biomedical Analyses and Imaging. 2010. 2010; 5: 2729-55.
- Tonga GY, Moyano DF, Kim CS, Rotello VM. Inorganic Nanoparticles for Therapeutic Delivery: Trials, Tribulations and Promise. *Curr Opin Colloid Interface Sci.* 2014; 19: 49-55.
- D'Al o A, Pointillart F, Ouahab L, Andraud C, Maury O. Charge transfer excited states sensitization of lanthanide emitting from the visible to the near-infra-red. *Coordination Chemistry Reviews.* 2012; 256: 1604-20.
- Liu Y, Zhou S, Tu D, Chen Z, Huang M, Zhu H, et al. Amine-functionalized lanthanide-doped zirconia nanoparticles: optical spectroscopy, time-resolved fluorescence resonance energy transfer biodetection, and targeted imaging. *J Am Chem Soc.* 2012; 134: 15083-90.
- Fischer S, Siefe C, Swearer DF, McLellan CA, Alivisatos AP, Dionne JA. Bright Infrared-to-Ultraviolet/Visible Upconversion in Small Alkaline Earth-Based Nanoparticles with Biocompatible CaF2 Shells. *Angew Chem Int Ed Engl.* 2020; 59: 21603-12.
- Wang Z, Zhang T, Pi L, Xiang H, Dong P, Lu C, et al. Large-scale one-pot synthesis of water-soluble and biocompatible upconversion nanoparticles for dual-modal imaging. *Colloids Surf B Biointerfaces.* 2021; 198: 111480.
- Plunkett S, El Khatib M, Sencan I, Porter JE, Kumar ATN, Collins JE, et al. In vivo deep-tissue microscopy with UCNP/Janus-dendrimers as imaging probes: resolution at depth and feasibility of ratiometric sensing. *Nanoscale.* 2020; 12: 2657-72.
- Luo W, Zou DH, Yang S, Cui LN, Liu PY, Zhu QY, et al. Water-Soluble Lanthanide-Titanium-Oxo Cluster, a Precursor for Biocompatible Nanomaterial. *Inorg Chem.* 2019; 58: 14617-25.
- Ren F, Liu H, Zhang H, Jiang Z, Xia B, Genevois C, et al. Engineering NIR-IIb fluorescence of Er-based lanthanide nanoparticles for through-skull targeted imaging and imaging-guided surgery of orthotopic glioma. *Nano Today.* 2020; 34.
- Zhao M, Li B, Wu Y, He H, Zhu X, Zhang H, et al. A Tumor-Microenvironment-Responsive Lanthanide-Cyanine FRET Sensor for NIR-II Luminescence-Lifetime In Situ Imaging of Hepatocellular Carcinoma. *Adv Mater.* 2020; 32: e2001172.
- Xu J, Shi R, Chen G, Dong S, Yang P, Zhang Z, et al. All-in-One Theranostic Nanomedicine with Ultrabright Second Near-Infrared Emission for Tumor-Modulated Bioimaging and Chemodynamic/Photodynamic Therapy. *ACS Nano.* 2020; 14: 9613-25.
- Zhang Y, Ma X, Chau H-F, Thor W, Jiang L, Zha S, et al. Lanthanide-Cyclen-Camptothecin Nanocomposites for Cancer Theranostics Guided by Near-Infrared and Magnetic Resonance Imaging. *ACS Applied Nano Materials.* 2021; 4: 271-8.
- Xu M, Yang G, Bi H, Xu J, Feng L, Yang D, et al. Combination of CuS and g-C3N4 QDs on upconversion nanoparticles for targeted photothermal and photodynamic cancer therapy. *Chemical Engineering Journal.* 2019; 360: 866-78.
- I YL, Jiang M, Xue Z, Zeng S. 808 nm light triggered lanthanide nanoprobes with enhanced down-shifting emission beyond 1500 nm for imaging-guided resection surgery of tumor and vascular visualization. *Theranostics.* 2020; 10: 6875-85.
- Feng M, Wang Y, Lin B, Peng X, Yuan Y, Tao X, et al. Degradable pH-responsive NIR-II imaging probes based on a polymer-lanthanide composite for chemotherapy. *Dalton Trans.* 2020; 49: 9444-53.
- Cao J, Zhang L, Ding X, Liu D, Su B, Shi J. Dual-Targeting Peptides RGD10-NGR9-Conjugated Lanthanide Nanoparticle@Polydopamine as Upconversion Nanoprobes for In Vivo Imaging of Lung Cancer. *Small Methods.* 2020; 4.
- Li D, He S, Wu Y, Liu J, Liu Q, Chang B, et al. Excretable Lanthanide Nanoparticle for Biomedical Imaging and Surgical Navigation in the Second Near-Infrared Window. *Adv Sci (Weinh).* 2019; 6: 1902042.
- Shao Y, Liu B, Di Z, Zhang G, Sun LD, Li L, et al. Engineering of Upconverted Metal-Organic Frameworks for Near-Infrared Light-Triggered Combinational Photodynamic/Chemo-/Immunotherapy against Hypoxic Tumors. *J Am Chem Soc.* 2020; 142: 3939-46.
- Zhong Y, Ma Z, Wang F, Wang X, Yang Y, Liu Y, et al. In vivo molecular imaging for immunotherapy using ultra-bright near-infrared-IIb rare-earth nanoparticles. *Nat Biotechnol.* 2019; 37: 1322-31.
- Li Y, Zeng S, Hao J. Non-Invasive Optical Guided Tumor Metastasis/Vessel Imaging by Using Lanthanide Nanoprobe with Enhanced Down-Shifting Emission beyond 1500 nm. *ACS Nano.* 2019; 13: 248-59.
- Zhang Q, Pratt EC, Tamura R, Ogirala A, Hsu HT, Farahmand N, et al. Ultrasmall Downconverting Nanoparticle for Enhanced Cerenkov Imaging. *Nano Lett.* 2021; 21: 4217-24.
- Pratt EC, Shaffer TM, Zhang Q, Drain CM, Grimm J. Nanoparticles as multimodal photon transducers of ionizing radiation. *Nature Nanotechnology.* 2018; 13: 418-26.
- Li Y, Lin J, Wang P, Luo Q, Lin H, Zhang Y, et al. Tumor Microenvironment Responsive Shape-Reversible Self-Targeting Virus-Inspired Nanodrug for Imaging-Guided Near-Infrared-II Photothermal Chemotherapy. *ACS Nano.* 2019; 13: 12912-28.

44. Xu L, Xue Y, Xia J, Qu X, Lei B, Yang T, et al. Construction of high quality ultrathin lanthanide oxyhydride nanosheets for enhanced CT imaging and anticancer drug delivery to efficient cancer theranostics. *Biomaterials*. 2020; 230: 119670.
45. Kuang Y, Zhang Y, Zhao Y, Cao Y, Zhang Y, Chong Y, et al. Dual-Stimuli-Responsive Multifunctional Gd₂Hf₂O₇ Nanoparticles for MRI-Guided Combined Chemo-/Photothermal-/Radiotherapy of Resistant Tumors. *ACS Appl Mater Interfaces*. 2020; 12: 35928-39.
46. McLeod SM, Robison L, Parigi G, Olszewski A, Drout RJ, Gong X, et al. Maximizing Magnetic Resonance Contrast in Gd(III) Nanoconjugates: Investigation of Proton Relaxation in Zirconium Metal-Organic Frameworks. *ACS Appl Mater Interfaces*. 2020; 12: 41157-66.
47. Wang P, Hao L, Wang Z, Wang Y, Guo M, Zhang P. Gadolinium-Doped BTO-Functionalized Nanocomposites with Enhanced MRI and X-ray Dual Imaging to Simulate the Electrical Properties of Bone. *ACS Appl Mater Interfaces*. 2020; 12: 49464-79.
48. Cai Y, Wang Y, Zhang T, Pan Y. Gadolinium-Labeled Ferritin Nanoparticles as T1 Contrast Agents for Magnetic Resonance Imaging of Tumors. *ACS Applied Nano Materials*. 2020; 3: 8771-83.
49. Babu S, Cho JH, Dowding JM, Heckert E, Komanski C, Das S, et al. Multicolored redox active upconverter cerium oxide nanoparticle for bio-imaging and therapeutics. *Chem Commun (Camb)*. 2010; 46: 6915-7.
50. D'Achille AE, Gonzalez-Rodriguez R, Campbell E, Lee BH, Coffey JL, Naumov AV. Rare-Earth-Doped Cerium Oxide Nanocubes for Biomedical Near-Infrared and Magnetic Resonance Imaging. *ACS Biomater Sci Eng*. 2020; 6: 6971-80.
51. Shao C, Shen A, Zhang M, Meng X, Song C, Liu Y, et al. Oxygen Vacancies Enhanced CeO₂:Gd Nanoparticles for Sensing a Tumor Vascular Microenvironment by Magnetic Resonance Imaging. *ACS Nano*. 2018; 12: 12629-37.
52. Wei Z, Wu M, Li Z, Lin Z, Zeng J, Sun H, et al. Gadolinium-doped hollow CeO₂-ZrO₂ nanoplatform as multifunctional MRI/CT dual-modal imaging agent and drug delivery vehicle. *Drug Deliv*. 2018; 25: 353-63.
53. Banerjee S, Pillai MR, Knapp FF. Lutetium-177 therapeutic radiopharmaceuticals: linking chemistry, radiochemistry, and practical applications. *Chem Rev*. 2015; 115: 2934-74.
54. Viana RdS, Costa LAdM, Harmon AC, Gomes Filho MA, Falcão EHL, Vicente MGH, et al. ¹⁷⁷Lu-Labeled Eu-Doped Mesoporous SiO₂ Nanoparticles as a Theranostic Radiopharmaceutical for Colorectal Cancer. *ACS Applied Nano Materials*. 2020; 3: 8691-701.
55. Yu B, Wei H, He Q, Ferreira CA, Kuttyreff CJ, Ni D, et al. Efficient Uptake of (¹⁷⁷) Lu-Porphyrin-PEG Nanocomplexes by Tumor Mitochondria for Multimodal-Imaging-Guided Combination Therapy. *Angew Chem Int Ed Engl*. 2018; 57: 218-22.
56. Pei P, Shen W, Zhou H, Sun Y, Zhong J, Liu T, et al. Radionuclide labeled gold nanoclusters boost effective anti-tumor immunity for augmented radio-immunotherapy of cancer. *Nano Today*. 2021; 38.
57. Chen Z, Zhang Z, Zhai X, Li Y, Lin L, Zhao H, et al. Rapid and Sensitive Detection of anti-SARS-CoV-2 IgG, Using Lanthanide-Doped Nanoparticles-Based Lateral Flow Immunoassay. *Anal Chem*. 2020; 92: 7226-31.
58. Zhao M, Wang R, Li B, Fan Y, Wu Y, Zhu X, et al. Precise In Vivo Inflammation Imaging Using In Situ Responsive Cross-linking of Glutathione-Modified Ultra-Small NIR-II Lanthanide Nanoparticles. *Angew Chem Int Ed Engl*. 2019; 58: 2050-4.
59. Pinol R, Zeler J, Brites CDS, Gu Y, Tellez P, Carneiro Neto AN, et al. Real-Time Intracellular Temperature Imaging Using Lanthanide-Bearing Polymeric Micelles. *Nano Lett*. 2020; 20: 6466-72.
60. Pan Y, Xie X, Huang Q, Gao C, Wang Y, Wang L, et al. Inherently Eu(2+)/Eu(3+) Codoped Sc₂O₃ Nanoparticles as High-Performance Nanothermometers. *Adv Mater*. 2018; 30: e1705256.
61. Liu J, Pan L, Shang C, Lu B, Wu R, Feng Y, et al. A highly sensitive and selective nanosensor for near-infrared potassium imaging. *Science Advances*. 2020; 6: eaax9757.
62. Galaup C, Picard C, Couderc F, Gilard V, Collin F. Luminescent lanthanide complexes for reactive oxygen species biosensing and possible application in Alzheimer's diseases. *FEBS J*. 2021.
63. Charpentier C, Cifliku V, Goetz J, Nonat A, Cheignon C, Cardoso Dos Santos M, et al. Ultrabright Terbium Nanoparticles for FRET Biosensing and in Situ Imaging of Epidermal Growth Factor Receptors*. *Chemistry*. 2020; 26: 14602-11.
64. He S, Chen S, Li D, Wu Y, Zhang X, Liu J, et al. High Affinity to Skeleton Rare Earth Doped Nanoparticles for Near-Infrared II Imaging. *Nano Lett*. 2019; 19: 2985-92.
65. Neufeld MJ, Winter H, Landry MR, Goforth AM, Khan S, Pratz G, et al. Lanthanide Metal-Organic Frameworks for Multispectral Radioluminescent Imaging. *ACS Appl Mater Interfaces*. 2020; 12: 26943-54.
66. Cardoso Dos Santos M, Runser A, Bartenlian H, Nonat AM, Charbonnière LJ, Klymchenko AS, et al. Lanthanide-Complex-Loaded Polymer Nanoparticles for Background-Free Single-Particle and Live-Cell Imaging. *Chemistry of Materials*. 2019; 31: 4034-41.
67. Jia Q, Ma L, Zhai X, Fu W, Liu Y, Liao X, et al. Orthogonal Near-Infrared-II Imaging Enables Spatially Distinguishing Tissues Based on Lanthanide-Doped Nanoparticles. *Anal Chem*. 2020; 92: 14762-8.
68. Huang J, Li J, Zhang X, Zhang W, Yu Z, Ling B, et al. Artificial Atomic Vacancies Tailor Near-Infrared II Excited Multiplexing Upconversion in Core-Shell Lanthanide Nanoparticles. *Nano Lett*. 2020; 20: 5236-42.
69. Deng Z, Huang J, Xue Z, Jiang M, Li Y, Zeng S. A general strategy for designing NIR-II emissive silk for the in vivo monitoring of an implanted stent model beyond 1500 nm. *J Mater Chem B*. 2020; 8: 4587-92.
70. Hofmann-Amtenbrink M, Grainger DW, Hofmann H. Nanoparticles in medicine: Current challenges facing inorganic nanoparticle toxicity assessments and standardizations. *Nanomedicine: Nanotechnology, Biology and Medicine*. 2015; 11: 1689-94.
71. Rogosnitzky M, Branch S. Gadolinium-based contrast agent toxicity: a review of known and proposed mechanisms. *Biometals*. 2016; 29: 365-76.
72. Gnach A, Lipinski T, Bednarkiewicz A, Rybka J, Capobianco JA. Upconverting nanoparticles: assessing the toxicity. *Chem Soc Rev*. 2015; 44: 1561-84.
73. Hirano S, Suzuki KT. Exposure, metabolism, and toxicity of rare earths and related compounds. *Environ Health Perspect*. 1996; 104 Suppl 1: 85-95.
74. Samhadaneh DM, Mandl GA, Han Z, Mahjoob M, Weber SC, Tuznik M, et al. Evaluation of Lanthanide-Doped Upconverting Nanoparticles for in Vitro and in Vivo Applications. *ACS Applied Bio Materials*. 2020; 3: 4358-69.
75. Xing H, Bu W, Ren Q, Zheng X, Li M, Zhang S, et al. A NaYbF₄: Tm³⁺ nanoprobe for CT and NIR-to-NIR fluorescent bimodal imaging. *Biomaterials*. 2012; 33: 5384-93.
76. Yan J, He W, Yan S, Niu F, Liu T, Ma B, et al. Self-Assembled Peptide-Lanthanide Nanoclusters for Safe Tumor Therapy: Overcoming and Utilizing Biological Barriers to Peptide Drug Delivery. *ACS Nano*. 2018; 12: 2017-26.