

A new marine gastrotrich from the State of São Paulo (Brazil), with a key to species of *Pseudostomella* (Gastrotricha, Thaumastodermatidae)

M. Antonio Todaro^{1,†}

¹ Department of Life Sciences, University of Modena and Reggio Emilia, via Campi, 213/D, 41125 Modena, Italy

[†] urn:lsid:zoobank.org:author:1F7357F2-5A2D-4914-9DAD-145669A8536A

Corresponding author: M. Antonio Todaro (antonio.todaro@unimore.it)

Academic editor: L. Penev | Received 10 September 2012 | Accepted 20 September 2012 | Published 26 September 2012

urn:lsid:zoobank.org:pub:BF07E971-6679-4414-BE07-2FA56B25E591

Citation: Todaro MA (2012) A new marine gastrotrich from the State of São Paulo (Brazil), with a key to species of *Pseudostomella* (Gastrotricha, Thaumastodermatidae). ZooKeys 223: 39–51. doi: 10.3897/zookeys.223.3975

Abstract

In previous papers, faunistic and preliminary taxonomic data on the gastrotrich communities along the coastline of the Brazilian states of São Paulo and Rio de Janeiro were reported; among the over 40 records, the occurrence of several species new to science was highlighted. One of such new taxa is described here based on observation carried out on living and SEM prepared specimens. *Pseudostomella dolichopoda* **sp. n.** (Gastrotricha: Thaumastodermatidae) is the only species in the genus that attains 420 µm in total length, is covered by pentancres and possesses, among others, caudal pedicles up to 45 µm in length. Additional differences with co-generic taxa characterized by a pentancrous covering are discussed. Furthermore, a key to the described *Pseudostomella* species of the world based on easily discernible traits, visible in both living and formalin-fixed specimens, is provided.

Keywords

Gastrotrichs, Brazil, São Paulo, biodiversity, taxonomy, new species, key

Introduction

The study is part of a larger research program aimed at shedding light on the diversity of marine invertebrates of the northern coasts of the State of São Paulo, Brazil (see Migotto and Tiago 1999). The results of this ambitious task will provide the necessary

background for any future study meant at the assessment of the health of the marine environment and therefore at the sound management of its biota. In previous papers, faunistic and preliminary taxonomic data on the gastrotrich communities along the coastline comprised between Picinguaba to the north (at the Rio de Janeiro–São Paulo States border) and praia Preta e Choncas to the south were reported. Among the some 40 taxa found, the occurrence of several species new to science was highlighted (Todaro and Rocha 2004, 2005). One of such new taxa is described here, it is a macrodasyidan in the family Thaumastodermatidae. Beside the novelty, the new species bears also ecological significance in that it is highly represented throughout most of the investigated localities, constituting one of the most common and abundant interstitial meiofaunal taxon.

Methods

Sandy sediment from the littoral and/or sublittoral site of 23 locations along the northern coasts of the State of São Paulo was collected during several field trips between 20 April and 3 May 2002. Littoral samples were taken during low tide, by digging three 30 cm-deep holes, ca 5 m apart from each other, at mid-water mark, and collecting the sand, about 500 ml, from the wall using a steel spoon. Sublittoral sand was taken by scooping the top sediment layers with a 500 ml plastic jar; sediment below 4 m water depth was collected by SCUBA diving. After collection, samples from each site were taken as soon as possible to the São Paulo University's CEBIMar laboratory in São Sebastião. A general account on the visited locations including geographic coordinates and physical and chemical characteristics of the microhabitats are reported in Todaro and Rocha (2004).

Using the same techniques, additional samples were taken in September 2003 from six beaches, four new and two already investigated (see Todaro and Rocha 2005); unless otherwise specified, data refer to the 2002 campaign. In Figure 1, the localities where the new species was found are reported. In the laboratory, the specimens were extracted daily with the narcotization-decantation technique using a 7% magnesium chloride solution within one week of collection. The supernatant was poured, without filtering, into 3.0-cm diameter plastic Petri dishes and scanned for gastrotrichs at 50 × under a Wild M8 stereomicroscope (see Todaro and Hummon 2008). Found gastrotrichs were mounted on glass slides and observed *in vivo* with Nomarski differential interference contrast optics using a Zeiss Axioscop 2 Plus microscope. During observation, the specimens were measured using an ocular micrometer and photographed with a Nikon Coolpix 995 digital camera (3.34 Mpixel). Some specimens were fixed overnight in a 1.0 M phosphate-buffered (pH 7.3) solution of paraformaldehyde, glutaraldehyde and picric acid, following Ermak and Eakin (1976), and stored for later SEM analysis. To this end, gastrotrichs were rinsed in 0.2 M cacodylate buffer, dehydrated through a graded ethanol series, critical point-dried using CO₂, mounted on aluminium stubs, sputter coated with gold-palladium and observed with a Philips XL 30 scanning electron microscope at the author's Institution.

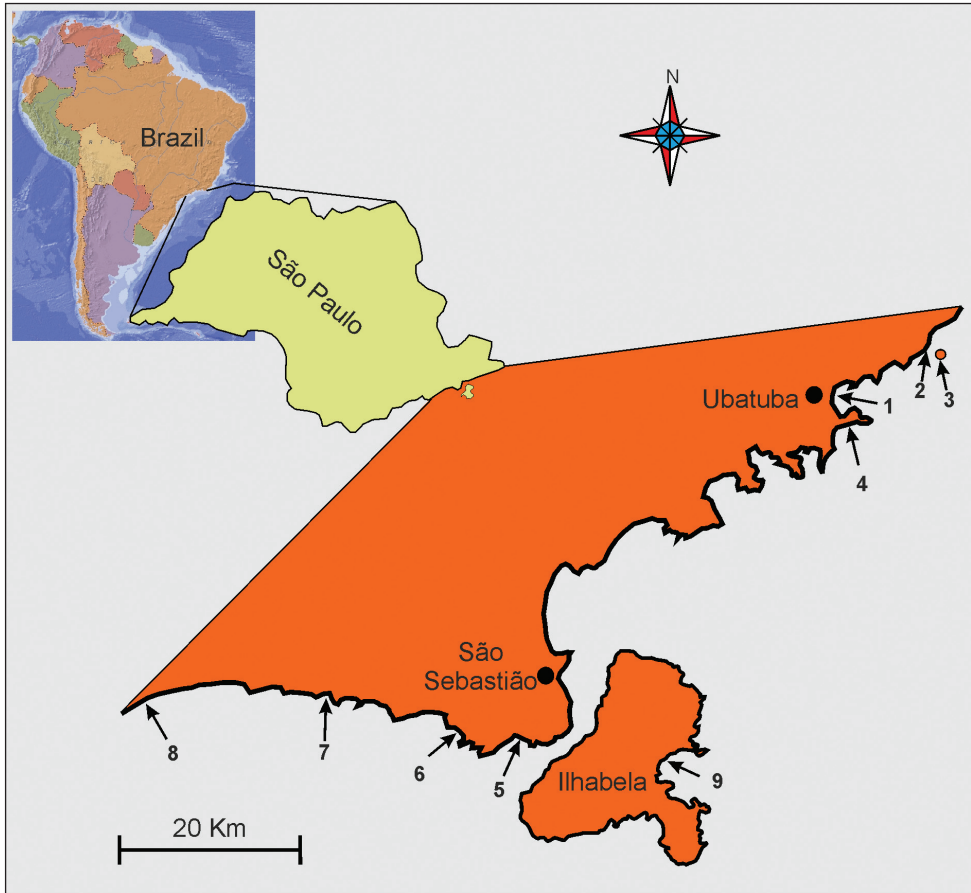


Figure 1. Localities along the coast of the State of São Paulo (Brazil) where *Pseudostomella dolichopoda* sp. n. was found. **1** praia Grande **2** praia Prumirim **3** Ilha do Prumirim **4** praia do Tenório (Ubatuba district) **5** praia de Guaecá **6** praia de Santiago **7** praia do Saí **8** praia Preta e Conchas (São Sebastião district) **9** praia de Castelhanos (Ilhabela island). For geographic coordinates and characteristics of the microhabitat see Todaro and Rocha (2004).

The description of the new species follows the convention of Hummon et al. (1993), whereas the position of some morphological characteristics along the body are given in percentage units (U) of total body length measured from anterior to posterior.

Granulometric analysis of the substrata was carried out according to Todaro et al. (2006). Mean grain size, sorting coefficient, kurtosis, and skewness were calculated by a computerized program based on the equation of Seward-Thompson and Hail (1973).

Abbreviations are as follows: TL, total body length; PhL, pharynx length; PhIJ, pharyngo-intestinal junction; TbA, adhesive tubes of the anterior series; TbDL, adhesive tubes of the dorsolateral series; TbL, adhesive tubes of the lateral series; TbVL, adhesive tubes of the ventrolateral series; TbP, adhesive tubes of the posterior series.

The rationale for the key to the ecological characteristics of the species, according to Hummon et al. (1992), is as follows: frequency of a species from among a sample series (i.e., frequency of a species in samples collected in any given sampling trip) - Sparse, found in less than 10% of samples; occasional, found in 10–30% of samples; common, found in 30–60% of samples; usual, found in more than 60% of samples.

Abundance of a species among other species of a sample - Rare, less than 1% of a sample; scarce, 3–5% of a sample; numerous, 10–20% of a sample (often a sub-dominant); prevalent, more than 30% of a sample (usually dominant or co-dominant).

Taxonomic account

Order Macrodasysida Remane, 1925 [Rao & Clausen, 1970]

Family Thaumastodermatidae Remane, 1927

Subfamily Thaumastodermatinae Remane, 1927

Genus *Pseudostomella* Swedmark, 1956

***Pseudostomella dolichopoda* sp. n.**

urn:lsid:zoobank.org:act:89445CF5-147A-4B27-A403-0DD50268E442

http://species-id.net/wiki/Pseudostomella_dolichopoda

Figures 2–4

Type locality. Brazil, State of São Paulo, Praia Grande of Ubatuba (Lat. 23°23'04.4"S; Long. 45°03'49.9"W). At Mid-Water Mark, in fine (mean grain size, 0.160 mm) moderately well sorted (sorting, 0.70 mm) siliceous sand, and at 1.5 m water depth in fine (mean grain size, 0.153 mm), moderately sorted (sorting, 0.54 mm), siliceous sand. Values of salinity, temperature and pH of the interstitial water at date of sampling 35.1 psu, 26.3° C and 7.92 respectively; from the same beach additional specimens were collected on 7 September 2003. Other location in the State - Ubatuba: praia Prumirim (**sl**=sublittoral) also in 2003, Ilha do Prumirim (2003, **l**=littoral), praia do Tenório (2003, **sl**); São Sebastião: praia de Guaecá (**sl**), praia de Santiago (**sl**), praia do Saí (**l**, **sl**), praia Preta e Conchas (**sl**); Ilhabela: praia de Castelhanos (**sl**) (see Fig. 1 and also Todaro and Rocha 2004 for additional details on these localities).

Type specimens. Holotype, the 358 µm long adult specimen shown in Figure 3.

Material examined. Fifteen adult specimens (including the holotype) collected by the author from different localities (see below); ten specimens were observed alive and are not longer extant, while five were prepared for SEM survey and are kept in the meiofauna collection of the author (Ref. n. 2002-BR-01-05).

Ecology. Frequency of occurrence – common in sediment of the northern sites, usual in southern sites but occasional in locations facing the São Sebastião channel and on Ilhabela. Abundance - prevalent to numerous in sub-littoral sediment, scarce in littoral sediments where found.

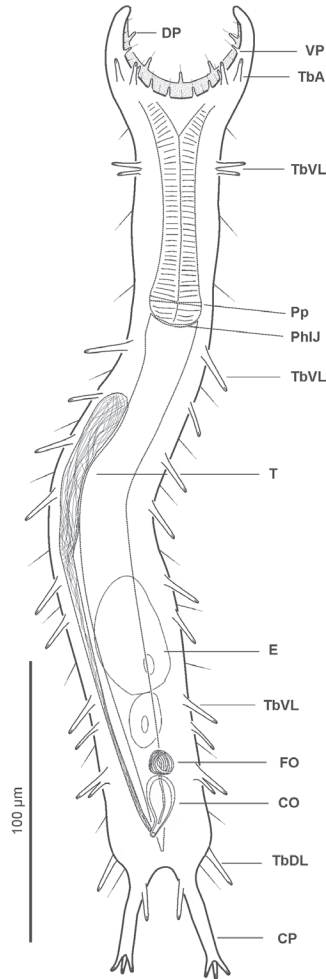


Figure 2. *Pseudostomella dolichopoda* sp. n. schematic drawing. Habitus as seen from the ventral side. **CO** caudal organ **CP** caudal pedicle **DP** dorsal papillae **E** egg **FO** frontal organ **PhIJ** pharyngo-intestinal junction **Pp** pharyngeal pores **T** testicle **TbA** anterior adhesive tubes **TbDL** dorsolateral adhesive tubes **TbL** lateral adhesive tubes **TbVL** ventrolateral adhesive tubes **VP** ventral papillae.

Diagnosis. A *Pseudostomella* with an adult length to 425 μm ; pharynx length to 90 μm , with pharyngeal pores at base. Pharyngo-intestinal junction (PhIJ) at U32; body slender, with graceful lines and elongate, furcate caudum. Head with mid-sized fleshy preoral palps curving around forward; palps showing few sensory hairs and provided with 5 and 8 papillae on the dorsal and ventral border respectively. Sensory hair sparse but evenly spaced on the body, forming lateral columns from about U12.5 to U85; glands barely visible, asymmetrically scattered along most of the length of the body. Cuticular armature of small, delicate pentantries on whole dorsal and ventrolateral surface, except for a bare, roughly T-shaped area posterior to the palps. Adhesive tubes:

TbA, 2 per side in a row U7.8; TbDL, 1 per side, robust, inserting on lateral margin of the posterior trunk region at U83.5; TbVL, 11 per side, 2 smaller ones in the anterior pharyngeal region, roughly at U16, 7 of slightly variable size, irregularly spaced in the intestinal region from U33.5 to U71.5, the remainder 2 originate from a common base at U76.2; TbP, 4 per side, 2 + 1 at the end of each foot of the furcated caudum and the other one flanking each foot medially. Ventral locomotor cilia: a continuous field of transverse rows covering sparsely the entire surface from U12 to U35; the field splits in the anterior intestinal region to form paired lateral tufts that extend onto the ano-genital area at U84. Reproductive system: testis on the right body side, caudal organ inverted pyriform, at U78; frontal organ bladder-like, at U74.5; maturing eggs mid-dorsally above the posterior half of the intestine.

Etymology. The specific name alludes to the extraordinary length of the caudal pedicles (*dólicos* Gr., long, and *poús, podos* Gr., foot).

Description. The description is mainly based on the adult specimen, 358 μm in total length, shown in Figure 3. Body somewhat slender, little swollen in the posterior pharyngeal region and at the base of the 43 μm -long caudal pedicles. Pharynx 81 μm in length, measured from the ventral border of the oral opening to the pharyngo-intestinal junction; pharyngeal pores near the base, at U29.5; pharyngo-intestinal junction at U32; widths of neck/trunk/caudal base 30/29.5/40/31 μm at U15/U31/U51/U82, respectively. Head with well developed, fleshy preoral palps, incurving ventromedially; the dorsal border projecting just beyond the ventral. Sensory hairs and papillae occur on dorsal and ventral borders of the preoral palps; hairs are scattered on the dorsal, lateral and ventral surface of the palps; dorsally there are five papillae, nearly same in length (8–10 μm), symmetrically arranged along the inner border of the palps in a 2 + 1 + 2 pattern; ventrally, there are eight papillae, 5–8 μm in length, symmetrically arranged more centrally about the inner border of the palps in a 4 + 4 pattern; all papillae bearing one or two, short sensory hairs at their tip; other hairs form lateral columns that are evenly spaced from U12.5 to U85; individual hairs are 12–15 μm in length. Glands barely visible, variable in shape (oval to oblong) and size (4–8 μm in diameter), asymmetrically scattered along most of the length of the body.

Cuticular armature. Small sized pentaneres with delicate, curved grasping tines, as tall as wide (3 \times 3 μm – 5 \times 5 μm) on whole dorsal and ventrolateral surface, except for a bare, roughly T-shaped area posterior to the palps; posteriorly most aneres extend onto the caudum.

Adhesive tubes. TbA, 2 per side (7–8 μm in length) in a row at U7.8; TbDL, 1 per side (15–18 μm in length), robust, inserting on the lateral margin of the posterior trunk region at U83.5; TbVL, 11 per side, 2 smaller ones (9–11 μm in length) in the anterior pharyngeal region, roughly at U16, 7 of slightly variable size and length (11–16 μm in length), irregularly spaced in the intestinal region from U33.5 to U71.5, the remainder 2, of unequal length (10 and 14 μm), originate from a common base at U76.2; TbP, 4 per side, 2 + 1 (5–6 μm in length) at the end of each foot of the furcated caudum and the other one (10 μm in length) flanking each foot medially.

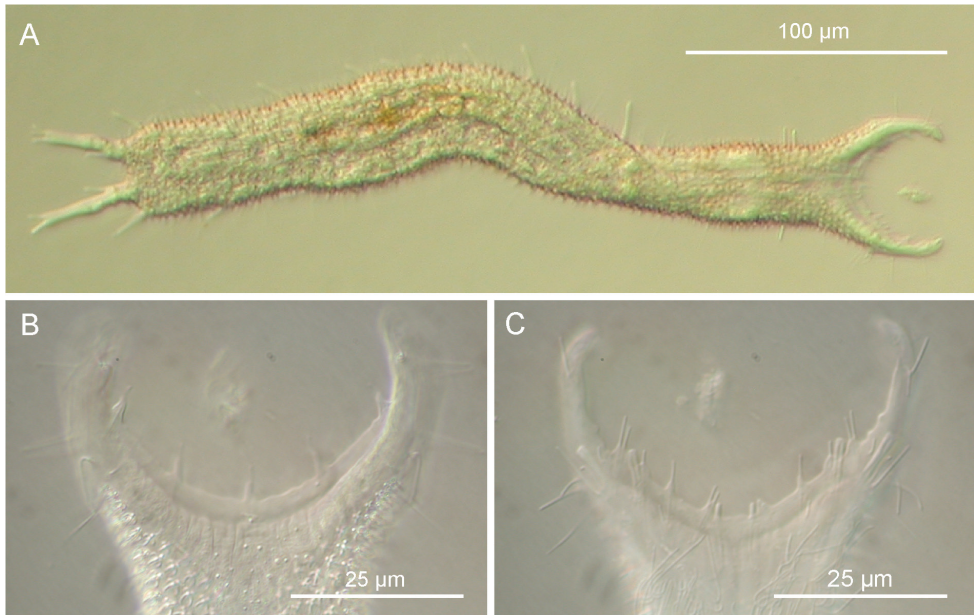


Figure 3. *Pseudostomella dolichopoda* sp. n. DIC photomicrographs. **A** habitus **B** close-up of the anterior region, dorsal view **C** Close-up of the anterior region, ventral view.

Ventral locomotor cilia. A continuous field of transverse rows covering sparsely the entire surface from U12 to U35; the field splits in the anterior intestinal region to form paired lateral tufts that extend onto the ano-genital area at U84. Reproductive system: testis on the right body side, caudal organ inverted pyriform ($11 \times 22 \mu\text{m}$), at U78; frontal organ bladder-like ($9 \mu\text{m}$ in diameter), at U74.5; maturing eggs mid-dorsally above the posterior half of the intestine.

Measurement and variability. Body length of 15 living specimens ranged from 340–425 μm (mean = 388 μm , SD = 25.4 μm) all of them were mature (i.e., showed at least the testicles filled with sperm). Strange enough all of the SEM prepared specimens resulted of smaller size (i.e., less than 300 μm) even though only specimens appearing larger under the dissecting microscope were selected for this scope; these measurements are well below the 5.5% length reduction allowed for fixed specimens (cf. Clausen 2004a). The adhesive tubes of the TbVL series showed some variability in number, depending on individuals, ranging 11–15; however, the one borne on a common base numbered invariably two per side. Three specimens, 415–425 μm in total body length, collected in September 2003 from praia do Tenório and praia Grande showed 3–4 tubes of “cirrata” type along each dorsolateral side of the trunk region; cirrata tubes were never observed in specimens collected during the 2002 campaign. The meaning of these differences is unknown.

Taxonomic affinities. Prior to the present study, the total number of *Pseudostomella* species known was 15 including one described by Valbonesi and Luporini (1984) but not formally named (cf. Hummon and Todaro 2010). Records come from a variety

of locations including India and the Andaman Sea (e.g., Rao 1970, Rao 1993, Priyalakshmi et al. 2007); east Malaysia (Renaud-Mornant 1967); Somalia (Valbonesi and Loporini 1984); Portugal, Atlantic coast of France and north Sea (e.g., Swedmark 1956, Clausen 2004b, Hummon 2008); Mediterranean Sea (e.g., Hummon et al. 1993, Todaro et al. 2003); Atlantic and Gulf of Mexico coasts of the US (Ruppert 1970, Todaro et al. 1995); moreover, the recent addition of new taxa from Australia (Hochberg 2002), South Korea (Lee and Chang 2002) and South Africa (Todaro et al. 2011) testify the cosmopolitan distribution of the genus. By contrast, *Pseudostomella* species appear to have a relatively restricted geographic range, at least compared to the wide distribution or even the cosmopolitan nature of many other gastrotrichs (cf. Todaro et al. 1996, Curini-Galletti et al. 2012, Kanneby et al. 2012, Kieneke et al. 2012).

Gastrotricha Thaumastodermatidae, including species of *Pseudostomella*, are characterized by peculiar cuticular armatures made up of sculptured plates, spines or a combination of both. Species of the genera *Acanthodasys*, *Pseudostomella*, *Tetranchyroderma* and *Thaumastoderma* bear peculiar pronged scales called ancrs: uniancrs, triancrs, tetrancrs and pentancrs depending on number of prongs.

Acanthodasy and *Thaumastoderma* species bear ancrs of a single type only, uniancrs and tetrancrs respectively whereas *Pseudostomella* and *Tetranchyroderma* bear tri- or tetra- or pentancrs depending on species. In the latter two taxa the type of pronged cuticular armature has been regarded as the single most important taxonomic trait to classify species (e.g., Todaro 2002; Lee and Chang 2002, but see Todaro et al. 2011); consequently, within the genus *Pseudostomella* three basic species groups are envisioned based on type of pronged spines i.e., species characterized by triancrs: *P. feroensis* Clausen, 2004, *P. klauserae* Hochberg, 2002, *P. megapalpator* Hochberg, 2002, *P. plumosa* Ruppert, 1970 and *P. trianetra* Hummon, 2011 (5 species). Forms that bear tetrancrs: *P. andamanica* Rao, 1993, *P. indica* Rao, 1970, *P. koreana* Lee & Chang, 2002, *P. longifurca* Lee & Chang, 2002, *P. malayica* Renaud-Mornant, 1967 and *P. roscovita* Swedmark, 1956 (six species). Taxa that possess pentancrs: *P. cataphracta* Ruppert, 1970, *P. cheraensis* Priyalakshmi, Menon & Todaro, 2007, *P. etrusca* Hummon, Todaro & Tongiorgi, 1993, and *Pseudostomella* sp1 of Valbonesi & Luporini (1984) (four species).

Based on the type of ancrs, the new species approaches the latter four taxa. However, *P. cataphracta*, is unique in that it shows a group of four ventral adhesive tubes per side that is missing in the other species, while *P. etrusca* is peculiar in that it possesses a robust dorsal adhesive tubes inserted at base of each oral palp, a trait lacking in the other taxa. *P. dolichopoda* sp. n. differs from *P. cheraensis* mainly in virtue of its larger size (up 425 μm vs. up to 295 μm), presence of two adhesive tubes in the anterior pharyngeal region and on the presence of two adhesive tubes originated from a common base located in the posterior intestinal region; finally, *P. dolichopoda* sp. n. differs from *Pseudostomella* sp1 because, among others, it has larger size (425 μm vs. 350 μm), possesses longer caudal pedicles (43 μm vs. 23 μm), bears two pairs of anterior adhesive tubes vs. a single pair present of Somali species, and because of the presence of the two adhesive tubes originate from a common base located in the posterior intestinal region.

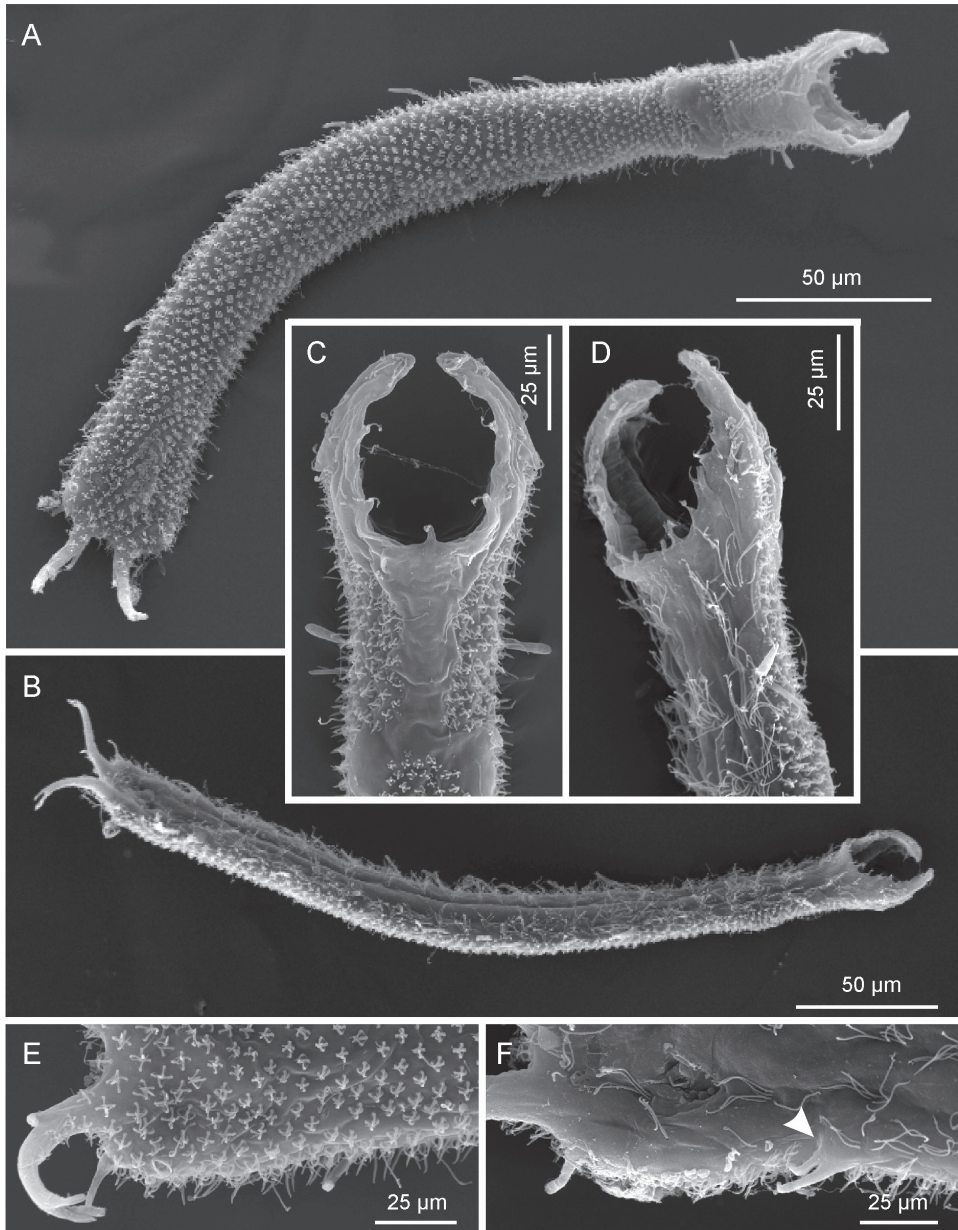


Figure 4. *Pseudostomella dolichopoda* sp. n. SEM photomicrographs. **A** habitus, dorsal view **B** habitus, ventral view; **C** close-up of the anterior region, dorsal view **D** close-up of the anterior region, ventrolateral view **E** close-up of the posterior region, dorsal view **F** close-up of the posterior region, ventral view, arrow shows the two ventrolateral adhesive tubes borne from a common base.

Taxonomic key. Hochberg (2002) and Lee and Chang (2002) in describing their new taxa, two species each, provided useful taxonomic keys; however, because two species were omitted in their analyses (i.e., *P. andamanica* Rao, 1993 omitted in Hoch-

berg, 2002 and *Pseudostomella* sp. 1 Valbonesi and Luporini, 1984 omitted in Chang and Lee, 2002) and other taxa have been described in the meanwhile (see above), a revised key seems necessary. The key will hopefully prove useful not only to gastrotrich specialists but also to marine ecologists who find these peculiar metazoans in the course of research on interstitial meiobenthos.

1	Cuticular armature of triancres	2
–	other	6
2	Five dorsal papillae on the prebuccal apparatus	3
–	seven dorsal papillae on the prebuccal apparatus	4
3	Four TbA per side; foot-like TbV present (3 tubes per side)	
 <i>P. megapalpator</i> Hochberg, 2002	
–	five TbA per side; foot-like TbV absent	<i>P. klauserae</i> Hochberg, 2002
4	Scales of a triancres arise from a common, forked shaft	
 <i>P. plumosa</i> Ruppert, 1970	
–	each scale shaft arises independently from the base	5
5	Scales of triancres foliate (=scaled triancres.....)	<i>P. feroensis</i> Clausen, 2004
–	scales of triancres needle-like.....	<i>P. triancra</i> Hummon, 2008
6	Cuticular armature of tetrancre	7
–	cuticular armature of pentancre	12
7	Five dorsal papillae on the prebuccal apparatus.....	8
–	seven dorsal papillae on the prebuccal apparatus	9
8	Five TbA per side; pedicles of 7 tubes (0:3:4); copulatory organ pyriform; bare area on the dorsal side, posterior to the prebuccal apparatus present.....	
 <i>P. longifurca</i> Chang & Lee, 2002	
–	two TbA per side; pedicles of 5 tubes (1:3:1); bare area absent.....	
 <i>P. indica</i> Rao, 1970	
9	copulatory organ tube-like	<i>P. koreana</i> Chang & Lee, 2002
–	copulatory organ pyriform	10
10	Bare area on the dorsal side, posterior to the prebuccal apparatus present	
 <i>P. roscovita</i> Swedmark, 1956	
–	Bare area absent	11
11	TbL, 3 pairs; body short (about 200 µm in length).....	
 <i>P. malayica</i> Renaud-Mornant, 1967	
–	TbL, 8 pairs; body elongate (about 500 µm in length).....	
 <i>P. andamanica</i> Rao, 1993	
12	Five dorsal papillae	13
–	seven dorsal papillae; 3 TbA per side; pedicles of 5 tubes (1:3:1) each; foot-like TbV present (4 tubes per side)	<i>P. cataphracta</i> Ruppert, 1970
13	Four TbA; single dorsal tube protruding from base of preoral palps present .	
 <i>P. etrusca</i> Hummon, Todaro & Tongiorgi, 1993	
–	Two TbA; dorsal tube absent.....	14

- 14 Adhesive tubes along the pharyngeal region absent
 ***P. cheraensis* Priyalakshmi, Menon & Todaro, 2007**
- Adhesive tubes along the pharyngeal region present **15**
- 15 Single pair of adhesive tubes along the pharyngeal region; dorsal cuticular covering complete..... ***Pseudostomella* sp.1 [Valbonesi & Luporini, 1984]**
- Two pairs of adhesive tubes along the pharyngeal region; presence of a bare area on the dorsal side, posterior to the prebuccal apparatus
 ***P. dolichopoda* sp. n.**

Acknowledgements

This work was mainly supported by the State of São Paulo Research Foundation (FAPESP) within the BIOTA/FAPESP - The Biodiversity Virtual Institute Program. I'm grateful to Carlos Rocha, for inviting me to perform the research. Many thanks are due to Alvaro E. Migotto and the staff of CEBIMar for the invaluable assistance received during the stay at the São Sebastião laboratory. Funding for the study was partially met by the BIOTOME project (UNIMORE).

References

- Clausen C (2004a) A new species of *Acanthodasys* (Gastrotricha: Thaumastodermatidae) from the west coast of Norway. *Sarsia* 89: 137–141 doi: 10.1080/00364820410004972
- Clausen C (2004b) Gastrotricha from the Faroe Bank. *Sarsia* 89: 423–458 doi: 10.1080/00364820410002677
- Curini-Galletti M, Artois T, Delogu V, De Smet WH, Fontaneto D, Jondelius U, Leasi F, Martinez A, Meyer-Wachsmuth I, Nilsson KS, Tongiorgi P, Worsaae K, Todaro M (2012) Patterns of Diversity in Soft-Bodied Meiofauna: Dispersal Ability and Body Size Matter. *PLoS ONE* 7: e33801 doi: 10.1371/journal.pone.0033801
- Ermak TH, Eakin RM (1976) Fine structure of the cerebral pygidial ocelli in *Chone ecaudata* (Polychaeta: Sabellidae). *Journal of Ultrastructural Research* 54: 243–260 doi: 10.1016/S0022-5320(76)80154-2
- Hochberg R (2002) Two new species of *Pseudostomella* (Gastrotricha: Macrodasyida) with scaled triancre from the east coast of Australia. *New Zealand Journal of Marine and Freshwater Research* 36: 571–579 doi: 10.1080/00288330.2002.9517113
- Hummon WD (2008) Gastrotricha of the North Atlantic Ocean: 1. Twenty four new and two redescribed species of Macrodasyida. *Meiofauna Marina* 16: 117–174.
- Hummon WD, Balsamo M, Todaro MA (1992) Italian marine Gastrotricha: I. Six new and one redescribed species of Chaetonotida. *Bollettino di Zoologia* 59: 499–516 doi: 10.1080/11250009209386711
- Hummon WD, Todaro MA (2010) Analytic taxonomy and notes on marine, brackish-water and estuarine Gastrotricha. *Zootaxa* 2392: 1–32.

- Hummon WD, Todaro MA, Tongiorgi P (1993) Italian marine Gastrotricha: II. One new genus and ten new species of Macrodasysida. *Bollettino di Zoologia* 60: 109–127 doi: 10.1080/11250009309355798
- Kanneby T, Todaro MA, Jondelius U (2012) A phylogenetic approach to species delimitation in freshwater Gastrotricha from Sweden. *Hydrobiologia* 683: 185–202 doi: 10.1007/s10750-011-0956-1
- Kieneke A, Martinez Arbizu P, Fontaneto D (2012) Spatially structured populations with a low level of cryptic diversity in European marine Gastrotricha. *Molecular Ecology* 21: 1239–1254 doi: 10.1111/j.1365-294X.2011.05421.x
- Lee JM, Chang CY (2002) *Pseudostomella* gastrotrichs (Macrodasysida, Thaumastodermatidae), form South Korea, with a brief review of the genus. *Korean Journal of Biological Sciences* 6: 207–312 doi: 10.1080/12265071.2002.9647653
- Migotto AE, Tiago CG (1999) Biodiversidade do estado de São Paulo, Brazil. 3. Invertebrados marinhos. FAPESP, São Paulo, 310 pp.
- Priyakshmi G, Menon NR, Todaro MA (2007) A new species of *Pseudostomella* (Gastrotricha: Macrodasysida: Thaumastodermatidae) from a sandy beach of Kerala, India. *Zootaxa* 1616: 61–68.
- Rao GC (1970) Three new interstitial gastrotrichs from Andhra coast, India. *Cahiers de Biologie Marine* 11: 109–120.
- Rao GC (1993) Littoral meiofauna of little Andaman. *Records of the Zoological Survey of India* 155: 1–120.
- Renaud-Mornant J (1967) *Pseudostomella malayica* n.sp., gastrotriche nouveau de la côte orientale de Malaisie. *Bulletin du Muséum National de Histoire Naturelle (Paris)*. 39: 209–212.
- Ruppert EE (1970) On *Pseudostomella* Swedmark 1956 with descriptions of *P. plumosa* nov. spec., *P. cataphracta* nov. spec. and a form of *P. roscovita* Swedmark 1956 from the west Atlantic coast. *Cahiers de Biologie Marine* 11: 121–143.
- Seward-Thompson BL, Hail JR (1973) An appraisal of the computation of statistical parameters in grain size analysis. *Sedimentology* 20: 161–169 doi: 10.1111/j.1365-3091.1973.tb01612.x
- Swedmark B (1956) Nouveaux gastrotriches macrodasyoïdes de la région de Roscoff. *Archives de Zoologie Experimentale and Generale* 94: 43–57.
- Todaro MA (1992) Contribution to the study of the Mediterranean meiofauna: Gastrotricha from the Island of Ponza, Italy. *Bollettino di Zoologia* 59: 321–333 doi: 10.1080/11250009209386689
- Todaro MA (2002) An interesting new gastrotrich from littoral meiobenthos (Long Beach Island, USA), with a key to species of *Tetranchyroderma* (Gastrotricha : Macrodasysida). *Journal of the Marine Biological Association of the United Kingdom* 82: 555–563 doi: 10.1017/S0025315402005878
- Todaro MA, Dal Zotto M, Perissinotto R, Bownes SJ (2011) First records of Gastrotricha from South Africa, with description of a new species of *Halichaetonotus* (Chaetonotida, Chaetonotidae). *Zookeys* 142: 1–13 doi: 10.3897/zookeys.142.2036
- Todaro MA, Fleegeer JW, Hummon WD (1995) Marine gastrotrichs from the sand beaches of the northern Gulf of Mexico: species list and distribution. *Hydrobiologia* 310: 107–117 doi: 10.1007/BF00015529

- Todaro MA, Fleeger JW, Hu YP, Hrinkevich AW, Foltz DW (1996) Are meiofauna species cosmopolitan? Morphological and molecular analysis of *Xenotrichula intermedia* (Gastrotricha: Chaetonotida). *Marine Biology* 125: 735–742 doi: 10.1007/BF00349256
- Todaro MA, Hummon WD (2008) An overview and a dichotomous key to genera of the phylum Gastrotricha. *Meiofauna Marina* 16: 3–20.
- Todaro MA, Leasi F, Bizzarri N, Tongiorgi P (2006) Meiofauna densities and gastrotrich community composition in a Mediterranean sea cave. *Marine Biology* 149: 1079–1091 doi: 10.1007/s00227-006-0299-z
- Todaro MA, Matinato L, Balsamo M, Tongiorgi P (2003) Faunistics and zoogeographical overview of the Mediterranean and Black Sea marine Gastrotricha. *Biogeographia* 24: 131–160.
- Todaro MA, Rocha CEF (2004) Diversity and distribution of marine Gastrotricha along the northern beaches of the State of São Paulo (Brazil), with description of a new species of *Macrodasys* (Macrodasysida, Macrodasysidae). *Journal of Natural History* 38: 1605–1634 doi: 10.1080/0022293031000156169
- Todaro MA, Rocha CEF (2005) Further data on marine gastrotrichs from the State of São Paulo and the first records from the State of Rio de Janeiro (Brazil). *Meiofauna Marina* 14: 27–31.
- Todaro MA, Kanneby T, Dal Zotto M, Jondelius U (2011) Phylogeny of Thaumastodermatidae (Gastrotricha: Macrodasysida) Inferred from Nuclear and Mitochondrial Sequence Data. *PLoS ONE* 6: e17892 doi: 10.1371/journal.pone.0017892
- Valbonesi A, Luporini P (1984) Researches on the coast of Somalia. *Gastrotricha Macrodasysoidea*. *Monitore Zoologico Italiano (Supplemento)*. 1: 1–34.