



In-line sample concentration in capillary electrophoresis by cyclodextrin to admicelle microextraction

Andaravaas Patabadige Jude P. Vaas¹ · Raymond B. Yu^{1,2} · Joselito P. Quirino¹

Received: 1 April 2022 / Revised: 8 July 2022 / Accepted: 13 July 2022 / Published online: 18 August 2022
© Crown 2022

Abstract

Cyclodextrins (CDs) as a pseudophase in pseudophase-to-pseudophase microextraction (P²ME) in capillary zone electrophoresis (CZE) are proposed. In this P²ME mode called CD to admicelle ME, a long plug of dilute analyte solution prepared in cetyltrimethylammonium bromide (CTAB) at the critical micellar concentration was injected into the capillary. This formed CTAB admicelles at the interface between the solution and the negatively charged capillary surface, where the analytes were trapped. The injection of CD solution released the admicelles and the analytes from the capillary surface due to the formation of stable CD/CTAB inclusion complexes. The analytes are concentrated at the CD front during injection and voltage separation. Various neutral CDs were found to be effective for CD to admicelle ME. To implement this in-line sample concentration technique in CZE, CD concentration, sample injection time, and sample:CD solution injection ratio were optimized. The optimized conditions for five model anionic analytes, namely, 4-bromophenol, sulindac, sulfamethizole, 4-vinylbenzoic acid, and succinylsulfathiazole, were 20 mM α -CD in 20 mM sodium tetraborate (pH 9.2) solution, sample injection time of 370 s, and CD:sample injection ratio of 1:2. The sensitivity enhancement factors (SEFs) were between 112 and 168. The SEFs of sulindac and sulfamethizole in particular were similar to previously published off-line microextraction techniques, which are typically time-consuming. The calculated values of LOQ, intra-/inter-day ($n = 6/n = 10$, 3 days) repeatability, and linearity (R^2) of CD to admicelle ME were 0.0125–0.05 $\mu\text{g/mL}$, 1.5–4.6%, 1.8–4.8%, and ≥ 0.999 , respectively. Finally, the potential of CD to admicelle ME to the analysis of artificial urine samples was demonstrated.

Keywords Capillary zone electrophoresis · Cyclodextrin · Electroosmotic flow · Microextraction · Pseudophase · Sample concentration

Introduction

Capillary electrophoresis (CE) is a family of microscale analytical separation techniques which utilizes the electric field to separate analytes inside a narrow-inner diameter (id) fused silica capillary [1–6]. The separation of neutral or charged small or large molecules is done by the appropriate choice of the CE separation media. In the CE mode of capillary

zone electrophoresis (CZE), the separation media or background solution (BGS) is a buffer. Tuning the pH of the BGS used in CZE typically allows the efficient separation of charged species due to differences in their electrophoretic mobilities. CZE is popularly used in the analysis of charged small molecules in commercial drug/herbal products and biological samples [7–16] and food/beverages and environment [17–25].

A well-known limitation in CE is poor detection sensitivity with UV detection. From the Beer's law, the analyte absorbance is directly related to the concentration and path-length, which is equal to the id of a capillary. The concentration sensitivity of CE-UV with a typical 50 μm id capillary can be two orders of magnitude poorer when compared to liquid chromatography (with off-line UV detection). Dedicated off-line sample concentration steps were often developed to achieve fit-for-purpose CE-UV assays for various applications [14, 26, 27]. The development of in-line sample

✉ Joselito P. Quirino
jqquirino@utas.edu.au

¹ Australian Centre for Research On Separation Science (ACROSS), School of Natural Sciences-Chemistry, University of Tasmania, Private Bag 75, Hobart, TAS 7001, Australia

² Present Address: Department of Pharmaceutical Chemistry, College of Pharmacy, University of the Philippines Manila, Manila, Philippines

concentration or stacking techniques in CE is also an active area of research, with 30–70 papers published each year during the last decade [28–32]. The popularity of stacking as an analyte concentration approach is attributed to its general ease of implementation and effectiveness.

In typical injection CE, samples are normally prepared in the separation media to achieve sharp peaks. However, stacking CE produces sharp peaks even with longer sample injections. This is achieved by the appropriate manipulation of sample solution chemistry and injection parameters. The analytes in the long plug are focused into a narrow zone in the presence of an electric field. Established in-line sample concentration techniques that are purely based on electrophoretic effects include stacking by field amplification/enhancement [33, 34], transient isotachopheresis [35–38], and dynamic pH junction [39, 40]. Stacking techniques of sweeping, analyte focusing by micelle collapse, and micelle to solvent or cyclodextrin stacking [41–45] also utilize the interaction of the analytes with a pseudophase (e.g., micelles). In the new in-line sample concentration technique in CZE called electroosmotic flow (EOF) assisted pseudophase-to-pseudophase microextraction (P^2ME), a long plug of a dilute solution of analytes (e.g., 12.4 cm) prepared in a solution of cetyltrimethylammonium bromide (CTAB) (where [CTAB] was between critical surface aggregation concentration (csac), and critical micellar concentration (cmc)) was injected into the capillary [46]. The analytes trapped in the CTAB stationary pseudophase were released and concentrated by the introduction of another pseudophase

(i.e., sodium dodecyl sulfate (SDS) micelles). The SDS micelles were partially introduced into the capillary by pressure. Upon application of voltage, the EOF generated pushed the negatively charged micelles towards the cathode. Sensitivity enhancement factors (SEFs) in the order of 10 were achieved using this technique.

Long-chain ionic surfactants (e.g., SDS and CTAB) form interfacial and solution micelles at concentrations $> cmc$ [47]. At concentrations $> csac$, these surfactants form admicelles (surfactant bilayer) at the interface between the liquid and capillary wall surface (with opposite charge) [48], which was demonstrated previously in CE [48, 49] and optical refractometry [50] studies. These surfactant aggregates at the interface have been shown to act as chromatographic pseudophases for open-tubular separations [48, 51–54]. Moreover, surfactant aggregates (i.e., admicelles) have recently been proposed for in-line sample concentration via pseudophase microextraction in CE [55].

Here, we used a neutral pseudophase, i.e., cyclodextrins (CD), instead of SDS micelles in P^2ME (CD to admicelles ME) of anionic analytes in CZE. The analytes are released from the CTAB admicelles and concentrated by the formation of stable CD/CTAB inclusion complexes, which increase the csac of CTAB, thus collapsing the admicelles [56, 57]. P^2ME parameters such as nature and concentration of CD, sample, and CD plug injection time were systematically investigated. Analytical figures of merit (linearity, repeatability, limits of quantitation (LOQ)) were determined. The potential application of P^2ME to fortified artificial urine was also explored.

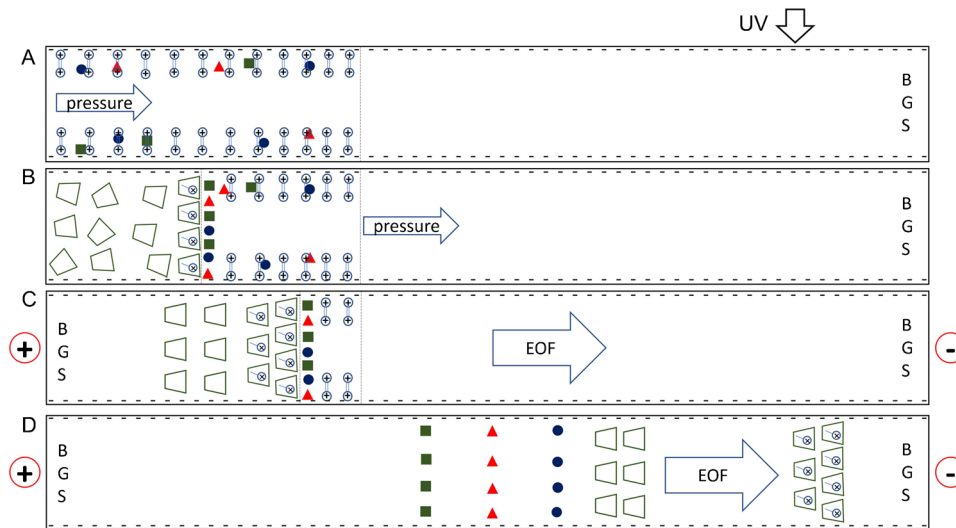


Fig. 1 Schematic of P^2ME (cyclodextrin to admicelle ME). A long plug of diluted analyte solution prepared in a CTAB solution ($csac < [CTAB] < cmc$) is injected into the capillary, with the analytes trapped in the CTAB chromatographic pseudophase (A). A short CD plug is then hydrodynamically injected into the capillary. A CD/CTAB complex is formed at the CD front, releasing and concentrat-

ing trapped analytes at the CD/S boundary (B). Voltage was applied at both ends of the capillary, with the cathode at the detector side (C). The EOF generated pushed the CD to the detector side, sweeping the remaining CTAB pseudophase and releasing the remaining analytes. Finally, the stacked analytes are separated by CZE (D)

Materials and methods

Reagents, solutions, and sample

HPLC-grade acetonitrile (ACN) and methanol (MeOH), sodium hydroxide (NaOH), sodium tetraborate, CDs (α -CD, β -CD, γ -CD, carboxymethyl- β -CD (CM- β -CD), hydroxyethyl- β -CD (HE- β -CD), hydroxypropyl- α -CD (HP- α -CD), hydroxypropyl- β -CD (HP- β -CD), hydroxypropyl- γ -CD (HP- γ -CD), γ -CD phosphate sodium salt (P- γ -CD), sulfated α -CD (S- α -CD), and sulfated γ -CD (S- γ -CD)), CTAB, and artificial urine were either from Sigma-Aldrich (St. Louis, MA) or Fluka (Buchs, Switzerland). Solutions were prepared in ultrapure water which was obtained from a Milli-Q system (Millipore, Bedford, MA, USA). All solutions and samples were sonicated for ~ 1 min and then passed through a syringe filter with a pore diameter of 0.45 μ m (Agilent Technologies, Waldbronn, Germany) prior to use. The BGS was 20 mM sodium tetraborate (pH 9.2) with 10% (v/v) ACN. The CD solution was 0.05–20 mM of a CD in 20 mM sodium tetraborate (pH 9.2). Model anionic analytes (2 mg/mL) (4-bromophenol, 4-vinylbenzoic acid, dichlorprop, ibuprofen, indoprofen, succinylsulfathiazole, sulfamerazine, sulfamethizole, sulfaquinoxaline, sulindac) were prepared in MeOH and were stored in 4 °C until use. In typical injection, the analytes were prepared in BGS. In P²ME, the analytes were prepared in 0.2 mM CTAB in 20 mM sodium tetraborate (pH 9.2) (P²ME sample diluent).

Artificial urine was processed according to the method of Wildman et al. [58]. Briefly, artificial urine (8 μ L) was spiked with the standard analyte mixture and was diluted 1:50 (v/v) in 10% ACN in 20 mM sodium tetraborate. CTAB was then added to obtain a sample matrix with a final concentration of 0.2 mM CTAB in 20 mM sodium tetraborate and an analyte concentration of 0.4 μ g/mL.

CZE instrumentation and general procedure

CZE was performed using an Agilent HPCE (Waldbronn, Germany) equipped with a UV detector and fitted with a fused silica capillary (Polymicro Technologies, Phoenix, AZ) with od and id of 360 μ m and 50 μ m, respectively. The total length of the capillary was 37.5 cm or 50 cm (29 cm or 41.5 cm from the inlet to the detector at 200 nm, respectively). The capillary temperature was maintained at 20 °C.

New capillaries were conditioned at ~ 1000 mbar with 0.1 M NaOH for 10 min followed by purified water for 5 min. Prior to each run, the capillaries were conditioned sequentially at ~ 1000 mbar with MeOH (2 min), ultrapure water (1 min), 0.1 M NaOH (7 min), ultrapure water (1 min), and BGS (6 min). Briefly, we studied the effect of injection regimens of 25 mbar at 4 s and 50 mbar at 5, 10, and 15 s

using the BGS as sample diluent. The peak heights were similar under all these conditions. However, peak broadening was observed at 5 s using 50 mbar injection pressure. Therefore, for typical injections, the sample was injected at 25 mbar for 4 s. For CD to admicelles ME, the sample was injected at 50 mbar followed by the CD plug, at various times. A separation voltage of 20 kV was applied at positive polarity (cathode at the detector end).

Calculations

SEF was calculated using the following formula: SEF = (peak height obtained from CD to admicelles ME) / (peak height obtained from typical injection) \times dilution factor.

% Recovery of analytes from the artificial urine sample was calculated using the following formula: % Recovery = (peak height from fortified sample) / (peak height from a standard analyte mixture at the same concentration) \times 100.

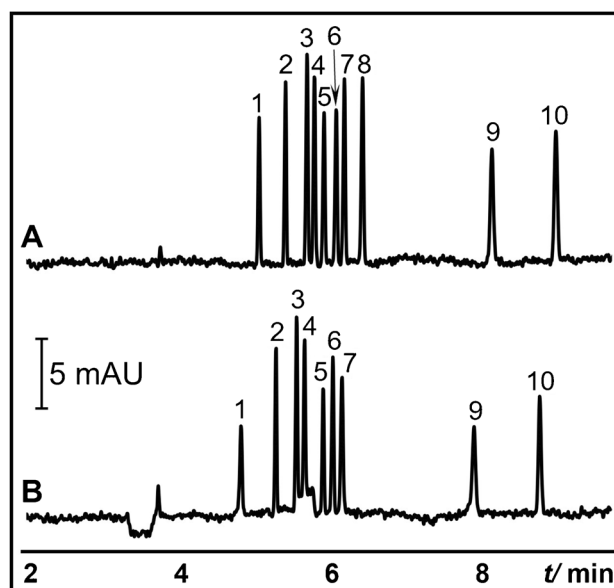


Fig. 2 Proof of concept for P²ME (CD to admicelle ME) of anionic analytes. **A** is the typical injection CZE and is shown here for comparison. **B** is P²ME (CD to admicelle ME) injection. BGS was 20 mM sodium tetraborate (pH 9.2) with 10% ACN. Analytes were 4-bromophenol (1), sulindac (2), sulfaquinoxaline (3), indoprofen (4), sulfamerazine (5), ibuprofen (6), sulfamethizole (7), dichlorprop (8), 4-vinylbenzoic acid (9), and succinylsulfathiazole (10). For typical injection, analytes (40 μ g/mL) were prepared in BGS. For P²ME, analytes (4 μ g/mL) were prepared in 0.2 mM CTAB in 20 mM sodium tetraborate (pH 9.2). Typical injection was performed at 25 mbar for 4 s. P²ME injection program was as follows: 0.2 mM CTAB in borate buffer (50 mbar for 20 s), sample in 0.2 mM CTAB in borate buffer (50 mbar for 20 s), and CD plug (50 mbar for 10 s). The CD plug was 20 mM α -CD in borate buffer. Capillary dimensions were 50 cm (41.5 cm from inlet to UV detector) \times 50 μ m i.d. Other conditions are mentioned in the Materials and methods

Fig. 3 **A** Elucidation of the mechanism of P²ME (CD to admicelle ME). (i) was P²ME injection. In (ii), model anionic analytes prepared in 20 mM sodium tetraborate (pH 9.2) was injected at 50 mbar for 20 s followed by 20 mM α -CD in borate buffer at 50 mbar for 3 s. In (iii), 20 mM α -CD in borate buffer was injected at 50 mbar for 3 s, followed by anionic analytes prepared in P²ME sample solution at 50 mbar for 20 s. Capillary dimensions were 37.5 cm (29 cm from inlet to UV detector) \times 50 μ m i.d. **B** CD to admicelle ME using various native and neutral derivatized CDs. The CDs were 2 mM of α -CD (i), β -CD (ii), γ -CD (iii), hydroxypropyl- α -CD (iv), hydroxyethyl- β -CD (v), and 2-hydroxypropyl- β -CD (vi) in 20 mM sodium tetraborate (pH 9.2). P²ME injection program was as follows: sample injection at 50 mbar for 20 s, followed by injection of CD plug at 50 mbar for 10 s. Capillary dimensions were 50 cm (41.5 cm from inlet to UV detector) \times 50 μ m i.d. Model anionic analytes in **A** and **B** were 4 μ g/mL each of sulindac (1), sulfamethizole (2), and 4-vinylbenzoic acid (3) in P²ME sample solution. BGS is as Fig. 2. Other conditions are mentioned in the Materials and methods

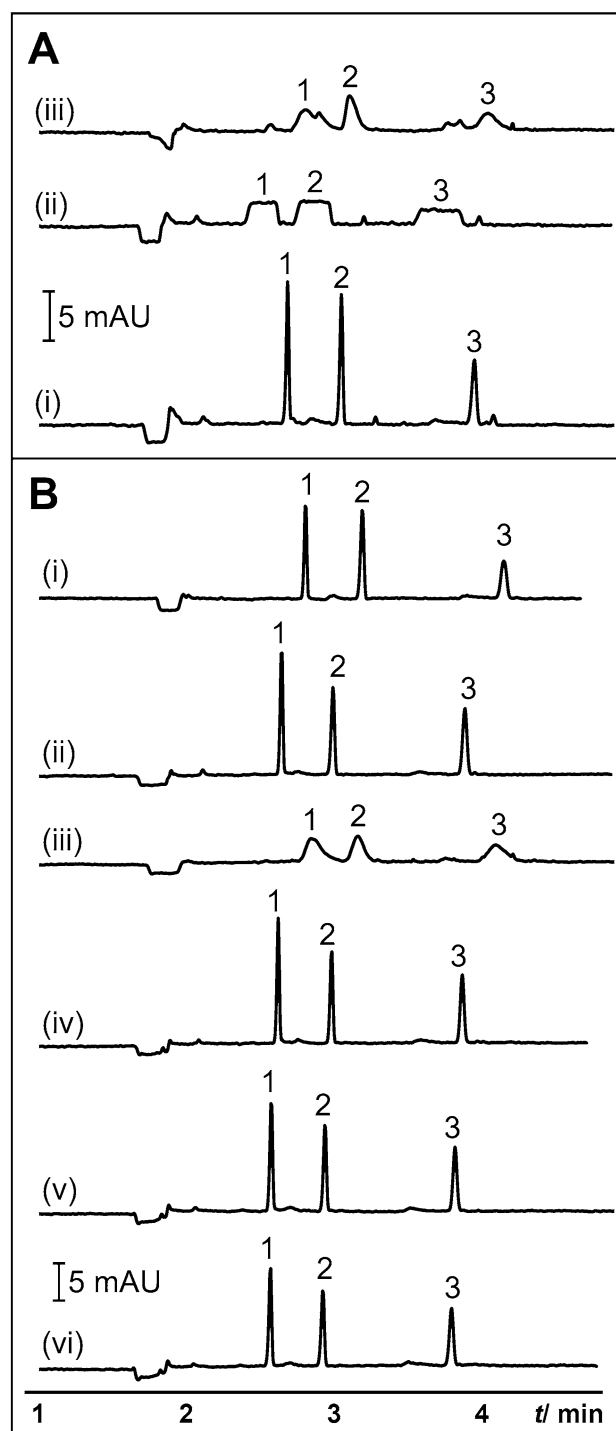
Results and discussion

General procedure and mechanism of CD to admicelle ME

The general procedure and mechanism of CD to admicelles ME are shown in Fig. 1. After conditioning the capillary with 0.1 M NaOH (flushed with purified water before and after) to ionize the silanol group, a long plug of a dilute analyte solution (S) prepared in a CTAB solution ($csac < [CTAB] < cmc$) was hydrodynamically injected into the capillary (see Fig. 1A). CTAB admicelles formed in the negatively charged capillary surface trapped the injected analytes. Then, a CD plug was hydrodynamically injected into the capillary (see Fig. 1B). The formation of CD/CTAB complexes in solution facilitated the release of the trapped analytes and the accumulation of analytes at the CD plug front. Upon application of voltage with the BGS on both ends of the capillary (see Fig. 1C), the cathodic EOF dragged the neutral CDs to the detector. The CDs swept through the remaining CTAB admicelles, causing the complete release and concentration of analytes. Finally, the released and concentrated analytes were separated by CZE (see Fig. 1D).

Proof of concept of CD to admicelle ME

The electropherograms obtained from typical injection and the proposed P²ME of ten anionic analytes are shown in Fig. 2A and B, respectively. Analytes in P²ME with concentrations 10 \times lower than in typical injection were prepared in P²ME sample diluent. The analytes were injected into the capillary at 50 mbar for 20 s. For this demonstration, a short plug of P²ME sample diluent (50 mbar for 20 s) was needed to improve the enrichment. We note that for longer S injections, injection of P²ME sample diluent is not required. Then, a plug of 20 mM α -CD in 20 mM



sodium tetraborate (pH 9.2) was injected at 50 mbar for 10 s. In this preliminary experiment, SEFs using peak heights of 6 for 4-bromophenol; 8 for sulfamerazine, sulfamethizole, and 4-vinylbenzoic acid; 9 for sulindac, sulfamethizole, and 4-vinylbenzoic acid; 9 for sulindac, sulfamethizole, and 4-vinylbenzoic acid; 10 for ibuprofen were achieved. Dichlorprop peak did not appear in P²ME (see Fig. 2B), probably because a long injection of dichlorprop is required for its preconcentration

in pseudophase microextraction [55]. We also note the faster migration time of the analytes in Fig. 2B, which was due to the shorter effective length for analysis after CD to admicelles ME. In addition, with longer sample injections (e.g., > 200 s at CD to S injection plug ratio of 1:2), stacking was incomplete, and co-elution of analyte peaks was observed due to a shorter effective separation length.

To prove the role of CTAB in P²ME, S was prepared in 20 mM sodium tetraborate (pH 9.2). To simplify the analysis, three analytes, namely, sulindac, sulfamethizole, and 4-vinylbenzoic acid, were used. S was injected at 50 mbar for 20 s, followed by the α -CD plug at 50 mbar for 3 s. Broad, plateau peaks were obtained in the absence of CTAB in S as shown in the electropherogram at Fig. 3A(ii), indicating the necessity of CTAB for sample concentration. The electropherogram showing S prepared in P²ME sample diluent is shown in Fig. 3A(i) for comparison. To confirm the role of EOF in P²ME, the α -CD plug was injected first into the capillary before the S prepared in P²ME sample diluent. The injection lengths of both S and the α -CD plug were as in Fig. 3B. The electropherogram in Fig. 3A(iii) did not reveal any sharp peaks, indicating that the CTAB admicelles remained attached to the negatively charged capillary wall.

Different CDs in CD to admicelle ME

We investigated different types of CDs, including native (α -, β -, γ -CD), neutral derivatized (HE- β -CD, HP- α -CD, HP- β -CD), and anionic (CM- β -CD, P- γ -CD, S- α -CD, S- γ -CD) CDs for implementation in CD to admicelles ME. The results are shown in Fig. 3B. The CD solution was 2 mM of a CD in 20 mM sodium tetraborate (pH 9.2). The S and CD plug were injected at 50 mbar for 20 and 10 s, respectively. No variations in peak heights were observed across the native and neutral derivatized CDs except for γ -CD (see Fig. 3B(iii)). Poor stacking was observed when γ -CD was used for CD to admicelle ME. This was attributed to the lower binding strength of γ -CD to CTAB [59], which caused inefficient analyte release and concentration in the method. On the other hand, the anionic CDs showed lower peak heights than the neutral CDs (see SI Fig. S1). Since the interaction of anionic CDs has been shown to be stronger than neutral CDs for long-chain cationic surfactants [56, 57], the strength of the interaction of an anionic CD with CTAB should be sufficient to release the admicelles from the capillary wall. On the other hand, we speculate that an anionic CD layer on top of the CTAB admicelles was formed by electrostatic interaction. This caused the inefficient release and enrichment of the anionic analytes.

Effect of CD concentration

To instantly show the effect of neutral [CD] on sample concentration, we used 20 mM or 10 \times more concentrated CD compared to Fig. 3B. Due to solubility issues, β -CD was not included. For HE- β -CD, HP- α -CD, and HP- β -CD, the concentration effect for the analytes used in Fig. 3B using a 20 mM CD was similar to a corresponding 2 mM CD. Meanwhile, the use of 20 mM α -CD or γ -CD caused sample concentration. We then selected α -CD to systematically study the effect of [CD]. The [α -CD] was varied at 0.05, 0.1, 2 and 20 mM (see SI Fig. S2). As expected, [CD] was important for efficient CD to admicelle ME. Sample concentration was

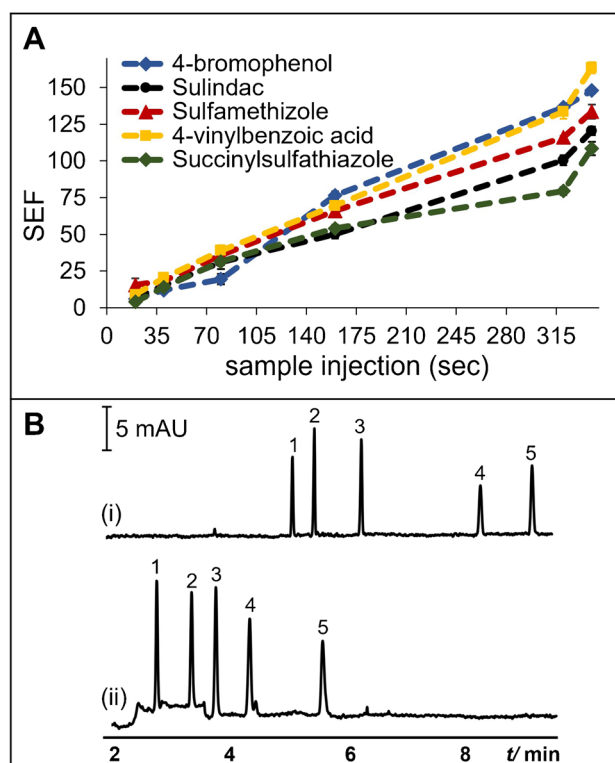


Fig. 4 **A** Effect of sample injection time on SEF. Model anionic analytes (0.4 μ g/mL) were prepared in 0.2 mM CTAB in borate buffer. BGS and CD plug were as Fig. 2. Sample and CD plug injection were performed at 50 mbar. The time of the CD plug injection was one-half of sample injection time. Other conditions are mentioned in the Materials and methods. **B** Representative electropherograms of typical injection (i) and optimized P²ME (CD to admicelle ME) (ii) of model anionic analytes. Typical injection was as Fig. 2. P²ME (CD to admicelle ME) injection program was as follows: sample injection at 50 mbar for 340 s (plug length \sim 39.7 cm), followed by injection of CD plug (20 mM α -CD in borate buffer) at 50 mbar for 170 s. Analytes were 40 (typical injection) or 0.4 (CD to admicelles ME) μ g/mL each of 4-bromophenol (1), sulindac (2), sulfamethizole (3), 4-vinylbenzoic acid (4), and succinylsulfathiazole (5). Capillary dimensions were 50 cm (41.5 cm from inlet to UV detector) \times 50 μ m i.d. Other conditions are mentioned in the Materials and methods

Table 1 Comparison of CD to admicelle ME with other microextraction techniques in literature for the tested analytes

Analyte	Method	Matrix	Sample pre-treatment time	Detection	Linear range	Limit of quantitation	Enhancement factor	Ref
Sulindac	Mixed matrix membrane tip extraction	Wastewater	~40 min	UHPLC-MS/MS	0.30–500 ng/L	0.30 ng/L	208	[60]
	Ultrasound-assisted dispersion liquid–liquid microextraction	Various water samples	21 min + evaporation	UHPLC-MS/MS	0.2–100 ng/mL	0.148 ng/mL	49	[61]
	CD to admicelle ME	Artificial urine	8.5 min	CZE-UV	50–800 ng/mL	50 ng/mL	123	This method
Sulfamethizole	Polymer monolith microextraction	Milk/egg	20 min	HILIC-MS	20–2000 ng/g	16.7–32.8 ng/g	8.9	[62]
	CD to admicelle ME	Artificial urine	8.5 min	CZE-UV	12.5–800 ng/mL	12.5 ng/mL	138	This method

poor at the lowest concentration studied, while increasing [CD] up to 20 mM improved sample concentration.

Optimization of injection conditions

The injection ratio of CD solution and S and the S injection time were optimized using 20 mM α -CD as the CD solution.

The model analytes were 4 μ g/mL each of 4-bromophenol, sulindac, sulfamethizole, 4-vinylbenzoic acid, and succinylsulfathiazole. The injection ratios of 1:20, 1:4, and 1:2 (CD plug length:S plug length) were studied at a fixed S injection time of 20 s (see SI Fig. S3). Stacking was already evident at an injection ratio of 1:20. Increasing the injection ratio from 1:20 to 1:4 improved analyte peak heights. This suggested

Table 2 Analytical figures of merit of CD to admicelle ME for the analysis of five anionic analytes

Parameter	4-Bromophenol	Sulindac	Sulfamethizole	4-Vinylbenzoic acid	Succinylsulfathiazole
Linear range (μ g/mL)	0.025–0.8	0.05–4.0	0.0125–0.8	0.025–0.8	0.05–4.0
Equation of the line					
<i>slope</i> \pm % RSD					
Based on peak height	26.531 \pm 1.349	28.275 \pm 1.220	27.365 \pm 0.504	18.311 \pm 3.881	13.024 \pm 0.190
Based on corrected peak area	20.871 \pm 0.664	22.665 \pm 0.440	21.403 \pm 0.268	17.297 \pm 1.087	15.384 \pm 0.979
<i>y-intercept</i> \pm % RSD					
Based on peak height	0.856 \pm 6.017	0.690 \pm 1.926	0.161 \pm 8.847	0.034 \pm 2.033	0.193 \pm 2.458
Based on corrected peak area	0.395 \pm 0.197	–1.047 \pm 7.627	0.369 \pm 2.395	–0.572 \pm 10.097	–1.796 \pm 8.236
Coefficient of variation (R^2)					
Based on peak height	0.9992	0.9998	0.9998	0.9965	0.9997
Based on corrected peak area	0.9998	0.9998	0.9997	0.9981	0.9960
LOQ (μ g/mL)	0.025	0.05	0.0125	0.025	0.05
<i>Intra-day repeatability (n = 10)*</i>					
% RSD, corrected peak area	3.4	3.0	4.6	4.0	3.2
% RSD, peak height	4.1	4.2	4.1	4.3	4.6
% RSD, migration time	1.5	1.6	1.5	2.5	2.7
<i>inter-day repeatability (n = 10, 3 days)*</i>					
% RSD, corrected peak area	4.6	4.7	4.8	4.5	4.6
% RSD, peak height	3.6	4.1	4.7	4.5	4.6
% RSD, migration time	1.8	2.1	3.2	3.3	3.2

*The analyte concentration used to estimate RSDs was 0.4 μ g/mL

the importance of the injection time of the CD plug in CD to admicelles ME. However, increasing the injection ratio from 1:4 to 1:2 did not improve further analyte peak heights. We note that the length of S was short at ~ 1.56 cm; thus, increasing the injection ratio from 1:4 to 1:2 did not do much to improve analyte peak heights.

The S injection times of 20–200 s were studied at injection ratios of 1:4 and 1:2. The plot of SEF vs. injection time are shown in SI Figs. S4 and S5, respectively. In general, the SEFs increased with the increase in S injection time regardless of the injection ratio. However, the concentration of 4-bromophenol was 5 \times better with the 1:2 ratio at 200 s. At 200 s injections, the SEFs were 15–60 and 40–70 for the 1:4 and 1:2 ratios, respectively. At a fixed S plug length, the effective separation length at 1:2 is shorter than 1:4 because of the longer CD plug. Therefore, the stacked analytes in the 1:2 ratio were nearer the detector at the end of the stacking process. The contribution of broadening by diffusion in the 1:2 ratio was lesser than 1:4, causing slightly better SEF values in the 1:2 injection. Using the 1:2 injection ratio, we then extended the S injection from 200 to 340 s (39.7 cm) (170 s CD plug). The results are shown in Fig. 4A. After comparison with typical injection (Fig. 4B), the SEFs of 150, 123, 138, 168, and 112 for 340 s were obtained for 4-bromophenol, sulindac, sulfamethizole, 4-vinylbenzoic acid, and succinylsulfathiazole, respectively. Please note that the analytes in P²ME was 100 \times more dilute than in typical injection CZE. The SEFs obtained for sulindac and sulfamethizole were comparable to those obtained from microextraction techniques reported in literature (see Table 1). Unfortunately, we were not able to obtain similar data for 4-bromophenol, 4-vinylbenzoic acid, and sulfamethizole in literature.

Analytical figures of merit

Using the conditions in Fig. 4B(ii), the LOQ, linearity (including linear range, equation of line, coefficient of variation), and intra- and inter-day repeatability in terms of corrected peak areas and peak migration times are summarized in Table 2. The LOQs (S/N = 10) of the method for the five analytes were between 0.0125 and 0.05 $\mu\text{g/mL}$. Linear range is more than one order of magnitude for all analytes, except for succinylsulfathiazole which is more than two orders of magnitude. Good linearity for the method was observed for all analytes, with R^2 values > 0.990. Repeatability was determined at 8–32 \times the LOQ of the analytes. The intra-day ($n = 6$) repeatability of analyte migration times and analyte peak heights were 4.6% and 2.7%, respectively. The inter-day ($n = 10$, 3 days) repeatability of analyte migration times and analyte peak heights were 4.7% and 3.3%, respectively.

Potential application of CD to admicelle ME to analysis of fortified artificial urine

CD to admicelle ME-CZE was applied to the analysis of diluted and fortified artificial urine, which mimics real urine samples. The electropherograms of the unfortified and fortified artificial urine are shown in Fig. 5. No significant interferences from the sample matrix were found. Analyte recoveries for 4-bromophenol, sulindac, sulfamethizole, 4-vinylbenzoic acid, and succinylsulfathiazole were 94.7, 96.0, 114.9, 89.1, and 68.6% with %RSD ($n = 3$) values of 1.9, 1.0, 10.7, 7.2, and 0.2%, respectively. The results demonstrate the potential of the approach for the determination of small organic molecules in real samples such as urine.

Conclusion

The use of CDs as pseudophase in P²ME was successfully demonstrated with significant SEFs of 112–168. The proposed technique called CD to admicelle ME is a novel in-line sample concentration approach that combines microextraction and stacking in one capillary. CD to admicelle ME is a green, easy to perform, and tuneable stacking/microextraction method and requires only the use of readily available reagents which form a chromatographic stationary pseudophase in situ. In this technique, CDs, which form stable CD/CTAB inclusion complexes, facilitated the release and concentration of the trapped analytes retained in the admicelles. Neutral CDs, i.e., α -CD, HE- β -CD, HP- α -CD, and HP- β -CD, were equally effective for this purpose. [CD], S injection times and

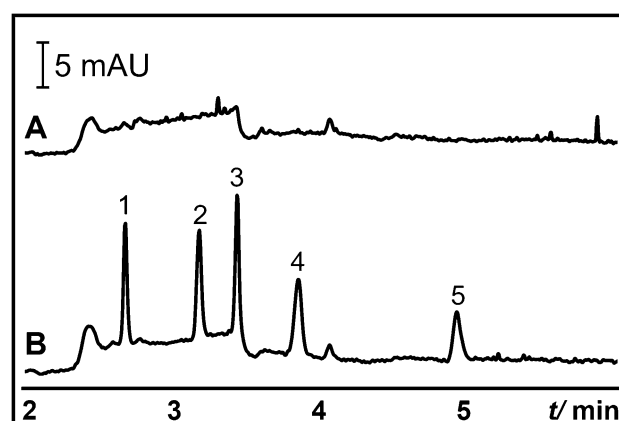


Fig. 5 Potential application of P²ME (CD to admicelle ME) to the analysis of artificial urine samples fortified with 0.4 $\mu\text{g/mL}$ of each analyte. Analyte identification and concentration and optimized P²ME (CD to admicelle ME) conditions were as in Fig. 4B(ii). Other conditions are mentioned in the Materials and methods

CD:S ratio were critical for the successful CD to admicelle ME of analytes. The SEFs obtained were comparable to previously developed off-line microextraction techniques; however, our in-line approach is much faster. Off-line microextraction takes about 20–40 min, while CD to admicelle ME takes only 8.5 min or ~ 30 min from preconditioning to analysis (see Table 1). Finally, the potential of CD to admicelle ME for use in real samples was demonstrated in the determination of anionic analytes in artificial urine.

Supplementary Information The online version contains supplementary material available at <https://doi.org/10.1007/s00216-022-04230-0>.

Acknowledgements The authors thank Ms. Muhandirange Ranasinghe for her assistance in the preparation of the figures.

Author contribution Conceptualization, Joselito P. Quirino and Andaravaas Patabadige Jude P. Vaas; methodology, Joselito P. Quirino and Andaravaas Patabadige Jude P. Vaas; validation, Andaravaas Patabadige Jude P. Vaas; formal analysis, Andaravaas Patabadige Jude P. Vaas; investigation, Andaravaas Patabadige Jude P. Vaas; resources, Joselito P. Quirino; data curation, Andaravaas Patabadige Jude P. Vaas; writing—original draft, Joselito P. Quirino and Raymond B. Yu; writing—review and editing, Joselito P. Quirino and Raymond B. Yu; visualization, Andaravaas Patabadige Jude P. Vaas and Raymond B. Yu; supervision, Joselito P. Quirino; project administration, Joselito P. Quirino; funding acquisition, Joselito P. Quirino.

Funding Open Access funding enabled and organized by CAUL and its Member Institutions This work was supported by the Australian Research Council [DP180102810, 2018].

Declarations

Competing interests The authors declare no competing interests.

Open Access This article is licensed under a Creative Commons Attribution 4.0 International License, which permits use, sharing, adaptation, distribution and reproduction in any medium or format, as long as you give appropriate credit to the original author(s) and the source, provide a link to the Creative Commons licence, and indicate if changes were made. The images or other third party material in this article are included in the article's Creative Commons licence, unless indicated otherwise in a credit line to the material. If material is not included in the article's Creative Commons licence and your intended use is not permitted by statutory regulation or exceeds the permitted use, you will need to obtain permission directly from the copyright holder. To view a copy of this licence, visit <http://creativecommons.org/licenses/by/4.0/>.

References

- Gackowski M, Przybylska A, Kruszewski S, Koba M, Mądra-Gackowska K, Bogacz A. Recent applications of capillary electrophoresis in the determination of active compounds in medicinal plants and pharmaceutical formulations. *Molecules*. 2021;26(14):4141.
- Kaur H, Beckman J, Zhang Y, Li ZJ, Szigeti M, Guttman A. Capillary electrophoresis and the biopharmaceutical industry: Therapeutic protein analysis and characterization. *Trends Anal Chem*. 2021;144:116407.
- Lobato A, Pereira EA, Gonçalves LM. Combining capillary electromigration with molecular imprinting techniques towards an optimal separation and determination. *Talanta*. 2021;221:121546.
- Ranasinghe M, Quirino JP. Can we replace liquid chromatography with the greener capillary electrophoresis? *Curr Opin Green Sustain Chem*. 2021;31:100515.
- Ta HY, Collin F, Perquis L, Poinso V, Ong-Meang V, Couderc F. Twenty years of amino acid determination using capillary electrophoresis: A review. *Anal Chim Acta*. 2021;1174:338233.
- Tůma P. Determination of amino acids by capillary and microchip electrophoresis with contactless conductivity detection – Theory, instrumentation and applications. *Talanta*. 2021;224:121922.
- Ahmed OS, Ladner Y, Xia J, Montels J, Philibert L, Perrin C. A fully automated on-line salting-out assisted liquid-liquid extraction capillary electrophoresis methodology: Application to tyrosine kinase inhibitors in human plasma. *Talanta*. 2020;208:120391.
- Barreto DN, Ribeiro MMAC, Sudo JTC, Richter EM, Muñoz RAA, Silva SG. High-throughput screening of cocaine, adulterants, and diluents in seized samples using capillary electrophoresis with capacitively coupled contactless conductivity detection. *Talanta*. 2020;217:120987.
- El-Kimary EI, Khalil HA, Belal TS, El-Yazbi AF. Green stability-indicating capillary electrophoretic method for simultaneous determination of Lesinurad and Allopurinol in tablet dosage form: Degradation kinetics investigation. *Microchem J*. 2020;158:105199.
- Generalova Y, Sipkina N, Alekseeva G. Determination of related impurities in a new active pharmaceutical ingredient – Sodium 4,4'-(propanediamido)dibenzoate. *Microchem J*. 2021;168:106498.
- Kowalski P, Ołędzka I, Plenis A, Miękus N, Pieckowski M, Bączek T. Combination of field amplified sample injection and hydrophobic interaction electrokinetic chromatography (FASI-HIEKC) as a signal amplification method for the determination of selected macrocyclic antibiotics. *Anal Chim Acta*. 2019;1046:192–8.
- Lecoeur M, Rabenirina G, Schifano N, Odou P, Ethgen S, Lebuffe G, et al. Determination of acetaminophen and its main metabolites in urine by capillary electrophoresis hyphenated to mass spectrometry. *Talanta*. 2019;205:120108.
- Pérez-Alcaraz A, Borrull F, Aguilar C, Calull M, Benavente F. Enantiodetermination of R, S-3,4-methylenedioxypropylvalerone in urine samples by high pressure in-line solid-phase extraction capillary electrophoresis-mass spectrometry. *Talanta*. 2021;225:121994.
- Šalplachta J, Horká M, Šlais K. Capillary electrophoresis with preparative isoelectric focusing preconcentration for sensitive determination of amphotericin B in human blood serum. *Anal Chim Acta*. 2019;1053:162–8.
- Stuke S, Bemboom P, Wirkner H, Smith W, Lock SJ. Residue analytical method for the determination of trifluoroacetic acid and difluoroacetic acid in plant matrices by capillary electrophoresis tandem mass spectrometry (CE-MS/MS). *J Chromatogr A*. 2021;1646:462096.
- Quirino JP, Guidote AM. Two-step stacking in capillary zone electrophoresis featuring sweeping and micelle to solvent stacking: II. Organic anions *J Chromatogr A*. 2011;1218(7):1004–10.

17. Colombo R, Papetti A. Pre-concentration and analysis of mycotoxins in food samples by capillary electrophoresis. *Molecules*. 2020;25(15):3441.
18. Jiménez-Jiménez S, Castro-Puyana M, Marina ML, García MÁ. Enantiomeric separation of prothioconazole and prothioconazole-desthio by Capillary Electrophoresis. Degradation studies in environmental samples. *J Chromatogr A*. 2021;1651:462255.
19. Martínez-Pérez-Cejuela H, Benavente F, Simó-Alfonso EF, Herrero-Martínez JM. A hybrid nano-MOF/polymer material for trace analysis of fluoroquinolones in complex matrices at microscale by on-line solid-phase extraction capillary electrophoresis. *Talanta*. 2021;233:122529.
20. Nguyen TD, Nguyen MH, Vu MT, Duong HA, Pham HV, Mai TD. Dual-channeled capillary electrophoresis coupled with contactless conductivity detection for rapid determination of choline and taurine in energy drinks and dietary supplements. *Talanta*. 2019;193:168–75.
21. Nowak PM. Simultaneous quantification of food colorants and preservatives in sports drinks by the high performance liquid chromatography and capillary electrophoresis methods evaluated using the red-green-blue model. *J Chromatogr A*. 2020;1620:460976.
22. Szigeti M, Meszaros-Matwiejuk A, Molnar-Gabor D, Guttman A. Rapid capillary gel electrophoresis analysis of human milk oligosaccharides for food additive manufacturing in-process control. *Anal Bioanal Chem*. 2021;413(6):1595–603.
23. Wimmer B, Pattky M, Zada LG, Meixner M, Haderlein SB, Zimmermann HP, et al. Capillary electrophoresis-mass spectrometry for the direct analysis of glyphosate: method development and application to beer beverages and environmental studies. *Anal Bioanal Chem*. 2020;412(20):4967–83.
24. Zhu C, Li L, Yang G, Irfan M, Wang Z, Fang S, et al. High-efficiency selection of aptamers for bovine lactoferrin by capillary electrophoresis and its aptasensor application in milk powder. *Talanta*. 2019;205:120088.
25. Quirino JP, Inoue N, Terabe S. Reversed migration micellar electrokinetic chromatography with off-line and on-line concentration analysis of phenylurea herbicides. *J Chromatogr A*. 2000;892(1–2):187–94.
26. Chen Z, Wang T, Guo M, Chang H, Zhou H, Wang Y, et al. Electrophoretic analysis of polyamines in exhaled breath condensate based on gold-nanoparticles microextraction coupled with field-amplified sample stacking. *Talanta*. 2019;198:480–6.
27. Muhandirange R, Quirino JP. Sample preparation in capillary electrophoresis for the determination of small molecule drugs and metabolites in urine. *Bioanalysis*. 2021;13(7):533–6.
28. Breadmore MC, Grochocki W, Kalsoom U, Alves MN, Phung SC, Rokh MT, et al. Recent advances in enhancing the sensitivity of electrophoresis and electrochromatography in capillaries and microchips (2016–2018). *Electrophoresis*. 2019;40(1):17–39.
29. Breadmore MC, Wuethrich A, Li F, Phung SC, Kalsoom U, Cabot JM, et al. Recent advances in enhancing the sensitivity of electrophoresis and electrochromatography in capillaries and microchips (2014–2016). *Electrophoresis*. 2017;38(1):33–59.
30. Kitagawa F, Otsuka K. Recent applications of on-line sample preconcentration techniques in capillary electrophoresis. *J Chromatogr A*. 2014;1335:43–60.
31. Malá Z, Gebauer P, Boček P. Contemporary sample stacking in analytical electrophoresis. *Electrophoresis*. 2011;32(1):116–26.
32. Quirino JP, Terabe S. Stacking of neutral analytes in micellar electrokinetic chromatography. *J Capillary Electrophor*. 1997;4(5):233–45.
33. Mikkers FEP. Concentration distributions in capillary zone electrophoresis: CZE in a spreadsheet. *Anal Chem*. 1999;71(2):522–33.
34. Chien RL. Sample stacking revisited: A personal perspective. *Electrophoresis*. 2003;24(3):486–97.
35. Foret F, Szökő E, Karger BL. Trace analysis of proteins by capillary zone electrophoresis with on-column transient isotachopheric preconcentration. *Electrophoresis*. 1993;14(1):417–28.
36. Lee HG, Kwon JY, Chung DS. Sensitive arsenic speciation by capillary electrophoresis using UV absorbance detection with on-line sample preconcentration techniques. *Talanta*. 2018;181:366–72.
37. Pantůčková P, Kubáň P, Boček P. Sensitivity enhancement in direct coupling of supported liquid membrane extractions to capillary electrophoresis by means of transient isotachopheric and large electrokinetic injections. *J Chromatogr A*. 2015;1389:1–7.
38. Timerbaev AR, Hirokawa T. Recent advances of transient isotachopheric-capillary electrophoresis in the analysis of small ions from high-conductivity matrices. *Electrophoresis*. 2006;27(1):323–40.
39. Britz-McKibbin P, Bebault GM, Chen DDY. Velocity-difference induced focusing of nucleotides in capillary electrophoresis with a dynamic pH junction. *Anal Chem*. 2000;72(8):1729–35.
40. Semail NF, Abdul Keyon AS, Saad B, Kamaruzaman S, Mohamad Zain NN, Lim V, et al. Simultaneous preconcentration and determination of sulfonamide antibiotics in milk and yoghurt by dynamic pH junction focusing coupled with capillary electrophoresis. *Talanta*. 2022;236:122833.
41. Ghiasvand A, Feng Z, Quirino JP. Enrichment and Separation of Cationic, Neutral, and Chiral Analytes by Micelle to Cyclodextrin Stacking-Micellar Electrokinetic Chromatography. *Anal Chem*. 2019;91(3):1752–7.
42. Quirino JP. Micelle to solvent stacking of organic cations in capillary zone electrophoresis with electrospray ionization mass spectrometry. *J Chromatogr A*. 2009;1216(2):294–9.
43. Quirino JP, Haddad PR. Online sample preconcentration in capillary electrophoresis using analyte focusing by micelle collapse. *Anal Chem*. 2008;80(17):6824–9.
44. Quirino JP, Terabe S. Exceeding 5000-fold concentration of dilute analytes in micellar electrokinetic chromatography. *Science*. 1998;282(5388):465–8.
45. Ahmed MA, Quirino JP. Micelle to cyclodextrin stacking in open-tubular liquid chromatography using capillaries coated with surfactant admicelles. *Anal Bioanal Chem*. 2022;414(3):1415–23.
46. Vaas APJP, Quirino JP. Electroosmotic flow assisted pseudophase to pseudophase microextraction for stacking in capillary zone electrophoresis. *J Chromatogr A*. 2021;1660:462654.
47. Bergström S, Olofsson G. A calorimetric study of three long-chain ionic surfactants. *Thermochim Acta*. 1986;109(1):155–64.
48. Tarongoy F, Haddad PR, Quirino JP. Admicelles in open-tube capillaries for chromatography and electrochromatography. *Anal Chim Acta*. 2019;1067:147–54.
49. Lucy CA, Underhill RS. Characterization of the cationic surfactant induced reversal of electroosmotic flow in capillary electrophoresis. *Anal Chem*. 1996;68(2):300–5.
50. Atkin R, Craig VSJ, Biggs S. Adsorption kinetics and structural arrangements of cationic surfactants on silica surfaces. *Langmuir*. 2000;16(24):9374–80.
51. Hautala JT, Riekkola ML, Wiedmer SK. Anionic phospholipid coatings in capillary electrochromatography. Binding of Ca²⁺ to phospholipid phosphate group. *J Chromatogr A*. 2007;1150(1–2):339–47.
52. Liu Z, Zou H, Ni JY, Zhang Y. Open tubular capillary electrochromatography with adsorbed stationary phase. *Anal Chim Acta*. 1999;378(1–3):73–6.

53. Quirino JP, Tarongoy FM. Liquid chromatography with micelles in open-tube capillaries. *Green Chem.* 2018;20(11):2486–93.
54. Yu RB, Quirino JP. Open-tubular admicellar electrochromatography of charged analytes. *Talanta.* 2020;208:120401.
55. Yu RB, Quirino JP. Pseudophase microextraction for in-line sample concentration in micellar electrokinetic chromatography. *Anal Chim Acta.* 2022;1189:339219.
56. Valente AJM, Söderman O. The formation of host-guest complexes between surfactants and cyclodextrins. *Adv Colloid Interface Sci.* 2014;205:156–76.
57. Yu RB, Quirino JP. Cyclodextrins as mobile phase additives in open-tubular admicellar electrochromatography for achiral and chiral separations. *Microchem J.* 2021;161:105763.
58. Wildman BJ, Jackson PE, Jones WR, Alden PG. Analysis of anion constituents of urine by inorganic capillary electrophoresis. *J Chromatogr A.* 1991;546:459–66.
59. Turco Liveri V, Cavallaro G, Giammona G, Pitarresi G, Puglisi G, Ventura C. Calorimetric investigation of the complex formation between surfactants and α -, β - and γ -cyclodextrins. *Thermochimica Acta.* 1992;199(C):125–32.
60. Ganesan T, Mukhtar NH, Lim HN, See HH. Mixed Matrix Membrane Tip Extraction Coupled with UPLC–MS/MS for the Monitoring of Nonsteroidal Anti-Inflammatory Drugs in Water Samples. *Separations.* 2020;7(1):19.
61. Guan J, Zhang C, Wang Y, Guo Y, Huang P, Zhao L. Simultaneous determination of 12 pharmaceuticals in water samples by ultrasound-assisted dispersive liquid–liquid microextraction coupled with ultra-high performance liquid chromatography with tandem mass spectrometry. *Anal Bioanal Chem.* 2016;408(28):8099–109.
62. Zheng M-M, Zhang M-Y, Peng G-Y, Feng Y-Q. Monitoring of sulfonamide antibacterial residues in milk and egg by polymer monolith microextraction coupled to hydrophilic interaction chromatography/mass spectrometry. *Anal Chim Acta.* 2008;625(2):160–72.

Publisher's note Springer Nature remains neutral with regard to jurisdictional claims in published maps and institutional affiliations.