

RESEARCH

Open Access



Correlation between biofilm formation and resistance toward different commonly used antibiotics along with extended spectrum beta lactamase production in uropathogenic *Escherichia coli* isolated from the patients suspected of urinary tract infections visiting Shree Birendra Hospital, Chhauni, Kathmandu, Nepal

Sanjeev Neupane¹, Narayan Dutt Pant^{2*} , Saroj Khatiwada³, Raina Chaudhary⁴ and Megha Raj Banjara¹

Abstract

Background: *Escherichia coli* is the most predominant causative agent of urinary tract infection (UTI). Recently, increase in drug resistance among the uropathogenic bacteria has caused great problem in treatment of UTI. The main objective of this research is to determine the correlation between biofilm formation and resistance toward different commonly used antibiotics along with extended spectrum beta lactamase production in uropathogenic *Escherichia coli*.

Methods: The urine samples collected from the patients suspected of urinary tract infections (visiting Shree Birendra Hospital, Chhauni, Kathmandu, Nepal between July to December 2013) were cultured in cystine lactose electrolyte deficient (CLED) agar by using semi quantitative culture technique. Extended spectrum beta lactamase (ESBL) production was detected by combined disc diffusion technique and biofilm formation was detected by Congo red agar method. Chi-square test was applied and p -value < 0.05 was considered statistically significant.

Results: Out of 1480 urine samples, *E. Coli* was isolated from 208 (14.1 %) samples. Of total 69 (33.2 %) ESBL producing uropathogenic strains of *E. coli*, 20 (29 %) were strong biofilm producers, 22 (31.9 %) were moderate biofilm producers, 11 (15.9 %) were weak biofilm producers and 16 (23.2 %) were biofilm non producers. Whereas among 139 ESBL non producing *E. coli*, 22 (15.8 %) were strong biofilm producers, 20 (14.4 %) were moderate biofilm producers, 13 (9.4 %) were weak biofilm producers and 84 (60.4 %) were biofilm non producers. Among total 108 biofilm producing *E. coli*, maximum resistance was observed toward cephalixin followed by amoxicillin and highest susceptibility was seen toward amikacin.

(Continued on next page)

* Correspondence: ndpant1987@gmail.com

²Department of Microbiology, Grande International Hospital, Dhapasi, Kathmandu, Nepal

Full list of author information is available at the end of the article



(Continued from previous page)

Conclusion: The ability of biofilm formation was found to be significantly higher in ESBL producing strains of *E. coli* than that in ESBL non producing strains ($p < 0.05$). There was higher resistance rate to antimicrobial agents among biofilm producing strains of *E. coli* than that in biofilm non producing strains. According to our antimicrobial susceptibility pattern for *E. coli*, to start preliminary treatment for UTI in Nepal, we recommend to use amikacin or nitrofurantoin. Further, for the treatment of the UTI, the antibiotics should be selected on the basis of the urine culture and sensitivity report.

Keywords: *Escherichia coli*, Urinary tract infection, Extended spectrum beta lactamase, Biofilm, Nepal

Background

Urinary tract infection (UTI) is one of the most common bacterial infections acquired both in the community and hospital settings, affecting all age groups [1, 2]. Worldwide, around 150 million cases of UTI are diagnosed each year [3] and *Escherichia coli* is identified as the most common cause of UTI, accounting for 80 to 85 % of the cases [4–6].

Recently the haphazard uses of antibiotics have resulted in the worldwide spread of antibiotic resistance among the bacteria causing a major problem [7]. The emergence and worldwide rapid increase in prevalence of extended spectrum beta-lactamase (ESBL) producing bacteria that are multidrug resistant, pose treatment problem resulting in high morbidity, high mortality, and increased health care costs [8]. Biofilm production is a mechanism exhibited by several microbes to survive in unfavorable conditions. The bacterial biofilm is a structured community of bacterial cells enclosed in polymeric matrix and adherent to a surface [9]. Biofilm producing uropathogenic bacteria may be responsible for many recurrent UTIs [10]. The bacteria enclosed in the biofilm are highly resistant to antibiotic treatment [9].

In this study we are investigating the incidence of the ESBL producing *E. coli* in causing UTI. Further we are determining the correlation between biofilm formation and drug resistance with commonly used antibiotics (for treatment of UTI) along with ESBL production in *E. coli* isolated from the urine samples of the patients suspected of urinary tract infections. This is the first this type of study conducted in Nepal.

Methods

A cross sectional study was conducted among the patients suspected of urinary tract infections (having symptoms like burning micturation, frequent or intense urge to urinate, back pain or lower abdominal pain, fever or chills etc.) visiting Shree Birendra Hospital, Chhauni, Kathmandu, Nepal since May to October 2013.

Total 1480 mid stream urine samples collected from the patients (out patients and in patients) suspected of urinary tract infections were cultured by the semi-quantitative culture technique [11]. The patients having laboratory or

radiological evidence of other infections as the cause of the symptoms, patients with urinary catheterization and those who already have received antibiotics were excluded from our study. The bacterial isolates from the urine samples were identified by using microbiological techniques as described in the Bergey's manual which include morphological appearance of the colonies, staining reactions and biochemical properties. The antimicrobial susceptibility testing was done by Kirby-Bauer disk diffusion technique as recommended by clinical and laboratory standards institute (CLSI) [12].

Detection of ESBL producers

Among the uropathogens isolated from suspected cases of UTI, only the strains of *E. coli* were subjected for detection of ESBL production. The phenotypic confirmation of the ESBL producing strains was done by combined disk method (Fig. 1) [12].

Detection of biofilm producers

Detection of biofilm production was done for both ESBL positive and ESBL negative strains of *E. coli* by Congo red agar method (CRA) (Fig. 2) [13].

On the basis of the intensity of color change of CRA medium after inoculation of the organisms, which is directly proportional to the amount of biofilm produced



Fig. 1 Confirmation of ESBL producer *E. coli* by combined disk method

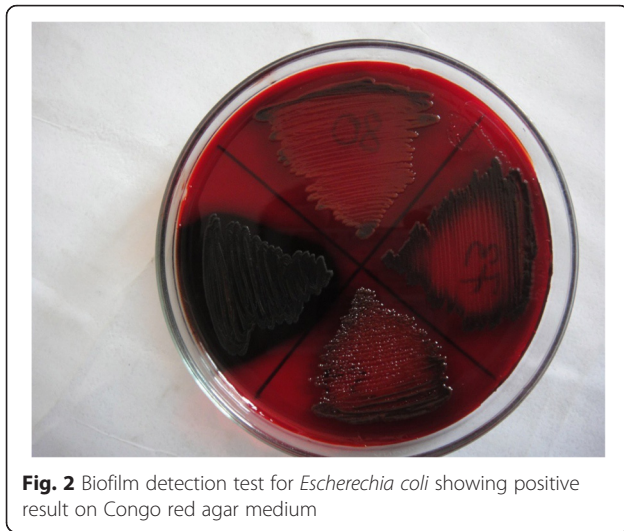


Fig. 2 Biofilm detection test for *Escherichia coli* showing positive result on Congo red agar medium

by the organisms, the biofilm producing organisms were classified into three categories as strong biofilm producers, moderate biofilm producers and weak biofilm producers [14, 15].

Data analysis

SPSS version 16.0 statistical software package was used for statistical analysis. Chi-square test was applied. P -value < 0.05 was considered statistically significant.

Results

Out of 1480 mid stream urine samples 278, (18.8 %) samples showed significant growth ($\geq 10^5$ cfu/ml). *E. coli* was isolated from 208 (74.82 %) samples. Out of 208 *E. coli* isolates 69 (33.2 %) were found to be ESBL producers and 139 (66.8 %) were ESBL non producers. Among 208 *E. coli* isolates 42 (20.192 %) were found to be strong biofilm producers, 42 (20.192 %) were moderate biofilm producers, 24 (11.538 %) were weak biofilm producers and 100 (48.076 %) were biofilm non producers.

Antibiotic resistance pattern of *E. coli* among biofilm producers and biofilm non producers

The antibiotic resistance among biofilm producing *E. coli* was found significantly higher than that of biofilm non producing *E. coli* ($p < 0.05$). The correlation between biofilm production and antibiotic resistance was found statistically significant ($p < 0.05$) in most of the antibiotics (ciprofloxacin, ofloxacin, norfloxacin, amikacin, gentamicin, cotrimoxazole, cephalixin, cefixime, ceftazidime, cefotaxime, ceftriaxone and cefepime) but the correlation was not found to be significant in case of amoxicillin and nitrofurantoin (Table 1).

Antibiotic susceptibility pattern of the uropathogenic *E. coli* isolated

Of total 208 *E. coli* isolates, the highest numbers of the strains were susceptible to amikacin followed by nitrofurantoin, gentamicin, ceftriaxone and cefepime. Similarly least numbers of the strains were susceptible to amoxicillin (Table 1).

Association of ESBL production and biofilm formation among *E. coli* isolates

Out of 69 ESBL producing uropathogenic strains of *E. coli*, 20 (29 %) were strong biofilm producers, 22 (31.9 %) were moderate biofilm producers, 11 (15.9 %) were weak biofilm producers and 16 (23.2 %) were biofilm non producers. Whereas among 139 ESBL non producing *E. coli*, 22 (15.8 %) were strong biofilm producers, 20 (14.4 %) were moderate biofilm producers, 13 (9.4 %) were weak biofilm producers and 84 (60.4 %) were biofilm non producers. The ability of biofilm formation was found to be significantly higher in ESBL producing strains of *E. coli* than that in ESBL non producing strains ($p < 0.05$).

Discussion

Among 208 *E. coli* isolates, 108 (51.92 %) were biofilm producers. This finding agrees with the findings of different authors from different parts of the world [16, 17]. Biofilm protects bacteria from host defense mechanisms, along with the antibiotics [18].

In this study, the antibiotic resistance of biofilm producing *E. coli* was found significantly higher than that of biofilm non producing *E. coli* ($p < 0.05$). Among biofilm producing *E. coli*, higher antibiotic resistance was observed in strong and moderate biofilm producers. The association between biofilm production and antibiotic resistance was found to be statistically significant ($p < 0.05$) except in case of amoxicillin and nitrofurantoin. Microorganisms growing in a biofilm are intrinsically resistant to many antibiotics increasing the antibiotic resistance up to 1000 folds and high antimicrobial concentrations are required to inactivate organisms growing in a biofilm [19, 20]. This may be because of the insufficient concentration of the antibiotics reaching some areas of the biofilms and metabolic inactiveness (along with the presence of active antibiotic degradation mechanisms contributing to halt the accumulation of the drugs up to an effective concentration) of the bacteria located at the base of the biofilms [9].

The biofilm forming ability was found to be significantly higher in ESBL positive strains of uropathogenic *E. coli* than that of ESBL negative strains [$p < 0.05$]. The study by Subramanian et al. in India also reported the higher ability of the ESBL producing organisms to form biofilm in comparison to that of ESBL non-producing isolates. It has been postulated that during occurrence of the large numbers of the chromosomal gene rearrangements upon

Acknowledgements

The authors would like to thank all who contributed directly or indirectly in conduction of this research.

Author details

¹Central Department of Microbiology, Tribhuvan University, Kirtipur, Kathmandu, Nepal. ²Department of Microbiology, Grande International Hospital, Dhapasi, Kathmandu, Nepal. ³Department of biochemistry, CIST College, Kathmandu, Nepal. ⁴Shree Birendra Hospital, Chhauni, Kathmandu, Nepal.

Received: 17 December 2015 Accepted: 9 February 2016

Published online: 15 February 2016

References

- Ramesh N, Sumathi CS, Balasubramanian V, Palaniappan KR, Kannan VR. Urinary tract infection and antimicrobial susceptibility pattern of extended spectrum beta lactamase producing clinical isolates. *Adv Biol Res.* 2008;2:78–82.
- Dromigny JA, Nabeth P, Perrier Gros Claude JD. Distribution and susceptibility of bacterial urinary tract infection in Dakar, Senegal. *Int J Antimicrob Agents.* 2002;20:339–47.
- Gupta K. Increasing antimicrobial resistance and the management of uncomplicated community acquired urinary tract infections. *Int J Antimicrob.* 2001;135:41–50.
- Nicolle LE. Uncomplicated urinary tract infection in adults including uncomplicated pyelonephritis. *Urol Clin North Am.* 2008;35:1–12.
- Bhatta CP, Shrestha B, Khadka S, Swar S, Shah B, Pun K. Etiology of urinary tract infection and drug resistance cases of uropathogens. *J Kath Med coll.* 2012;2:114–20.
- Sahm DF, Thornsberry C, Mayfield DC, Jones ME, Karlowsky JA. Multidrug-resistant urinary tract isolates of *E. coli*: prevalence and patient demographics in the United States. *J Antimicrob Chemother.* 2001;45:1402–6.
- Goldstein FW. Antibiotic susceptibility of bacterial strains isolated from patients with community-acquired urinary tract infections in France. Multicentre Study Group. *Eur J Clin Microbiol Infect Dis.* 2000;19:112–7.
- Schwaber MJ, Carmeli Y. Mortality and delay in effective therapy associated with extended-spectrum β -lactamase production in Enterobacteriaceae bacteraemia: a systemic review and meta-analysis. *J Antimicrob Chemother.* 2007;60:913–20.
- Soto SM. Importance of biofilms in urinary tract infections: new therapeutic approaches. *Adv Biol.* 2014;2014(2014):543974.
- Rijavec M, Muller-Premru M, Zakotnik B, Bertok DZ. Virulence factors and biofilm production among *Escherichia coli* strains causing bacteraemia of urinary tract origin. *J Med Microbio.* 2008;57:1329–34.
- Cheesbrough M. District laboratory practice in tropical countries, part II. 2nd ed. New York: Cambridge university press; 2006. p. 112–3.
- Clinical Laboratory Standards Institute. (CLSI) CLSI document M100S-S22. Performance standards for antimicrobial susceptibility testing: Twenty second informational supplement ed. Wayne: CLSI; 2012.
- Mathur T, Singhal S, Khan S, Upadhyay DJ, Fatma T, Rattan A. Detection of biofilm formation among the clinical isolates of staphylococci: an evaluation of three different screening methods. *Indian J Med Microbiol.* 2006;24:25–9.
- Poovendran P, Vidhya N, Murugan S. Antimicrobial susceptibility pattern of ESBL and non-ESBL producing uropathogenic *Escherichia coli* (UPEC) and their correlation with biofilm formation. *Intl J Microbiol Res.* 2013;4:56–63.
- Christensen GD, Simpson WA, Bisno AL, Beachey EH. Adherence of slime producing strains of *Staphylococcus epidermidis* to smooth surface. *Infect Immun.* 1982;37:318–26.
- Anandkumar H, Soham G, Vinodkumar CS, Rao A, Srinivasa H. Detection of Cell Surface Hydrophobicity and Biofilm formation among ESBL and non-ESBL producing uropathogenic *Escherichia coli*. *J Med Educ Res.* 2012;2:12–20.
- Nair BT, Bhat KG, Shantaram M. In vitro biofilm production and virulence factors of uropathogenic *Escherichia coli*. *Int J Pharm Bio Sci.* 2013;4:951–6.
- Hanna A, Berg M, Stout V, Razatos A. Role of capsular colanic acid in adhesion of uropathogenic *Escherichia coli*. *Appl Environ Microbiol.* 2003;69:4474–81.
- Thien-fah UK, George PA. Mechanism of biofilm resistance to antimicrobial agents. *Trends Microbiol.* 2001;9:34–9.
- Stewart PS, Costerton JW. Antibiotic resistance of bacteria in biofilms. *Lancet.* 2001;358:135–8.
- Subramanian P, Umadevi S, Kumar S, Stephen S. Determination of correlation between biofilm and extended spectrum β lactamases producers of Enterobacteriaceae. *Scho Res J.* 2012;2:2–6.
- Black JA, Moland ES, Thomson KS. AmpC disk test for detection of plasmid-mediated AmpC- β lactamases in Enterobacteriaceae lacking chromosomal AmpC- β lactamases. *J Clin Microbiol.* 2005;43:3110–3.
- Paterson DL, Bonomo RA. Extended-spectrum beta-lactamases: a clinical update. *Clin Microbiol Rev.* 2005;18:657–86.
- Gautam R, Chapagain ML, Acharya A, Rayamajhi N, Shrestha S, Ansari S, et al. Antimicrobial susceptibility patterns of *Escherichia coli* from various clinical sources. *JCMC.* 2013;3:14–7.
- Awasthi TR, Pant ND, Dahal PR. Prevalence of Multidrug Resistant Bacteria in Causing Community Acquired Urinary Tract Infection Among the Patients Attending Outpatient Department of Seti Zonal Hospital, Dhangadi, Nepal. *Nepal J Biotechnol.* 2015;3(1):55–9.

Submit your next manuscript to BioMed Central and we will help you at every step:

- We accept pre-submission inquiries
- Our selector tool helps you to find the most relevant journal
- We provide round the clock customer support
- Convenient online submission
- Thorough peer review
- Inclusion in PubMed and all major indexing services
- Maximum visibility for your research

Submit your manuscript at
www.biomedcentral.com/submit

