



RESEARCH

Open Access



Defining the fitness of HIV-1 isolates with dual/mixed co-receptor usage

Immaculate L Nankya^{1,2,3}, Denis M Tebit^{1,4}, Awet Abraha¹, Fred Kyeyune^{1,2,3}, Richard Gibson¹, Oyebisi Jegede^{1,5}, Gabrielle Nickel¹ and Eric J Arts^{1,2*}

Abstract

Background: CCR5-using (r5) HIV-1 predominates during asymptomatic disease followed by occasional emergence of CXCR4-using (x4) or dual tropic (r5x4) virus. We examined the contribution of the x4 and r5 components to replicative fitness of HIV-1 isolates.

Methods: Dual tropic r5x4 viruses were predicted from average HIV-1 env sequences of two primary subtype C HIV-1 isolates (C19 and C27) and from two patient plasma samples (B12 and B19). Chimeric Env viruses with an NL4-3 backbone were constructed from the B12 and B19 env sequences. To determine replicative fitness, these primary and chimeric dual tropic HIV-1 were then competed against HIV-1 reference isolates in U87.CD4 cells expressing CXCR4 or CCR5 or in PBMCs \pm entry inhibitors. Contribution of the x4 and r5 clones within the quasispecies of these chimeric or primary HIV-1 isolates were then compared to the frequency of x4, r5, and dual tropic clones within the quasispecies as predicted by phenotypic assays, clonal sequencing, and 454 deep sequencing.

Results: In the primary HIV-1 isolates (C19 and C27), subtype C dual tropic clones dominated over x4 clones while pure r5 clones were absent. In two subtype B chimeric viruses (B12 and B19), r5 clones were >100-fold more abundant than x4 or r5/x4 clones. The dual tropic C19 and C27 HIV-1 isolates outcompeted r5 primary HIV-1 isolates, B2 and C3 in PBMCs. When AMD3100 was added or when only U87.CD4.CCR5 cells were used, the B2 and C3 reference viruses now out-competed the r5 component of the dual tropic C19 and C27. In contrast, the same replicative fitness was observed with dualtropic B12 and B19 HIV-1 isolates relative to x4 HIV-1 A8 and E6 or the r5 B2 and C3 viruses, even when the r5 or x4 component was inhibited by maraviroc (or AMD3100) or in U87.CD4.CXCR4 (or CCR5) cells.

Conclusions: In the dual tropic HIV-1 isolates, the x4 replicative fitness is higher than r5 clones but the x4 or x4/r5 clones are typically at low frequency in the inpatient virus population. Ex vivo HIV propagation promotes outgrowth of the x4 clones and provides an over-estimate of x4 dominance in replicative fitness within dual tropic viruses.

Keywords: HIV-1 fitness, Co-receptor usage, Entry inhibitors

Background

Human immunodeficiency virus entry into host cells involves binding to CD4 and one of two coreceptors, namely CCR5 and CXCR4, hence the two viral phenotypes, the r5- and x4-using viruses. CCR5 is expressed in conjunction with surface CD4 on activated lymphocytes, macrophages, dendritic cells, and brain cells, while

CXCR4 with CD4 are found on the surface of resting T cells and monocytes [1–3]. Although other chemokine receptors can mediate low level HIV-1 entry [4, 5], CCR5 and CXCR4 remain the primary co-receptors for all diverse HIV-1 subtypes as well as other primary lentiviruses, e.g. HIV-2, simian immunodeficiency virus from chimpanzees, sooty mangabeys, and African green monkeys [6–9]. The r5 HIV-1 variants are preferentially transmitted and predominate during the asymptomatic period of infection whereas x4 HIV-1 emerges late in disease and in less than 50 % of patients [10–13].

*Correspondence: eja3@case.edu

¹ Division of Infectious Diseases, Department of Medicine, Case Western Reserve University, 10900 Euclid Ave., Cleveland, OH 44106, USA
Full list of author information is available at the end of the article

HIV-1 entry into host cells is almost exclusively triggered by Env glycoproteins. In fact, expression of only HIV-1 Env in an effector cell can mediate fusion with a target cell expressing CD4 and a co-receptor (reviewed in [14]). During virus assembly, the Env gp160 precursor is cleaved by cellular proteases into the membrane spanning gp41 and the soluble gp120 subunits, which remain covalently linked through a disulfide bridge [15]. On the virus particle, Env gp120/gp41 form trimer spikes that mediate virus attachment to the receptor complex on the cell surface (reviewed in [14]). First, a conserved C4 region in gp120 interacts with the amino-terminal extracellular immunoglobulin-like domain of the CD4 receptor. Upon interaction with CD4, the V3 loop of gp120 can engage the second extracellular loop of CCR5 (or CXCR4) while a gp120 conformational change exposes a second Env site (comprised in part by the C2 region) to bind with the N terminus of the co-receptor.

Although the V3 loop appears to define selective binding of either CCR5 or CXCR4, specificity for a particular co-receptor also appears to extend to other regions throughout gp120 [16–18]. Specifically, the V1/V2 loops on HIV-1 gp120 can influence co-receptor usage but not as efficiently as the V3 domain [19–21]. Differential interaction with the co-receptors may be related to the higher negative charge of the second extracellular loop of CXCR4 compared to that of CCR5, which may in turn favor binding to a more positively charged gp120 V3 loop [22, 23]. Several algorithms/models have been developed to predict HIV-1 co-receptor usage from the amino sequence in Env. Geno2Pheno and PSSM are algorithms based solely on the V3 loop sequence and are generally greater than 85 % accurate in predicting co-receptor usage by HIV-1 subtype B strains [24–27]. Both of these models are heavily weighted by positive charges at amino acid positions 11 and/or 25 in the V3 loop, which are nearly absolute in predicting CXCR4 usage. In addition, Phenoseq a new program has the ability to predict coreceptor usage for all the major subtypes.

The switch from r5 to x4 virus has been associated with rapid depletion of CD4+ T cells [28, 29]. Patients harboring x4 viruses progress to AIDS more rapidly than those harboring exclusively r5 viruses implying that CXCR4 utilization is linked to a stronger pathogenic phenotype and a switch to CXCR4 utilization is a causative factor in disease progression, this has been mainly studied in subtype B [28, 30, 31]. However, this hypothesis is quite controversial considering that CD4 cell decline is observed in nearly all HIV-infected patients despite the fact that only 50 % switch from r5 to x4 viruses and only late in disease among subtype B individuals. A switch in coreceptor usage rarely occurs in subtype C. Three main hypotheses for the switch in coreceptor usage have been proposed.

The transmission-mutation hypothesis proposes that predominance of r5 viruses during transmission and early infection is due to active selection of r5 and that the coreceptor switch is a result of virus evolution during the course of disease [29]. The target cell-based hypothesis is based on the inability of quiescent, naïve CXCR4+/CD4+ T cells to support HIV-1 replication whereas the memory CCR5+/CD4+ T cells are activated at a higher frequency and as such, support greater HIV-1 replication [32, 33]. With the depletion of the memory T cell population, there would be a shift in cells that support x4 versus r5 replication. Finally, the immune-control hypothesis assumes that x4 viruses are recognized better by the immune system than r5 viruses [34, 35]. Thus, x4 viruses would only emerge later in infection due in part to poor virologic control by a dysfunctional immune response. This hypothesis also suggests that emergence of x4 over r5 variants relates to higher replicative fitness [36]. However, increased sensitivity of CXCR4-using virus compared to CCR5-using virus to autologous neutralizing antibodies is not supported by other studies [37].

These hypotheses generally focus on the displacement of r5 HIV-1 by x4 HIV-1 late in disease progression but do not necessarily account for dual tropic HIV-1 variants. An HIV-1 isolate that utilizes both CCR5 and CXCR4 for entry is commonly referred to as dual tropic (r5x4). However, the inpatient dual/mixed (dm) may be any combination of HIV-1 clones using just CCR5 or CXCR4 for entry (x4 or r5 HIV-1) in addition to clones capable of infecting both CD4+/CCR5+ and CD4+/CXCR4+ cells (r5x4 HIV-1). The contribution of the r5, x4, and r5x4 to the replicative fitness of an HIV-1 isolate is poorly understood but could be consequential to disease progression. Dominance of pure x4 variants within the inpatient HIV-1 population at any time, even in late disease is relatively rare. Instead, most HIV-1 isolates that appear to prefer CXCR4 for host cell entry still retain the ability to infect CD4+/CCR5+ cells.

In previous studies, we performed hundreds of competitions between HIV-1 isolates of all group M subtypes with a focus of subtype C strains [38–40]. Subtype C isolates were substantially less fit than all other group M isolates when competed in head-to-head pair-wise competitions in PBMC cultures using a set of r5 and x4 HIV-1 isolates [40]. Two subtype C HIV-1 isolates (C19 and C27) capable of infecting CD4+/CXCR4+ cells were dual tropic (i.e. also capable of infecting CD4+/CCR5+ cells). Thus, the reduced fitness of at least two of these “x4” subtype C isolates may be related to the r5x4 phenotype, especially if there was a high proportion of pure r5 HIV-1 isolates in the C19 and C27 HIV-1 isolates. In almost all cases, x4 HIV-1 have faster replication kinetics than r5 HIV-1 isolates when performing dual infections of PBMCs [40, 41]. This dual

infection is not a “true” competition considering that the r5 and x4 viruses likely replicate in different susceptible cells within the PBMC population. In this study, we examined the impact of both the “CXCR4”-using and “CCR5”-using clones to the replicative fitness of r5x4 HIV-1 isolates in CD4+/CCR5+ cells, CD4+/CXCR4+ cells, and in the mixed cell population found in PBMCs. We also competed the r5x4 HIV-1 isolates against r5 or x4 primary HIV-1 isolates in the presence of AMD3100 (CXCR4 antagonist) or MVC (CCR5 antagonist) to further confirm relative fitness of each phenotype in the dual tropic HIV-1 isolates. Finally, the contribution of the r5 and x4 component to replicative fitness of the primary HIV-1 isolates was compared to the sum of its parts by characterizing or predicting the co-receptor usage of the representative clones in these dual tropic virus populations.

Dual tropic and dm viruses are commonly observed in HIV infected patients and are frequently responsible for failure of maraviroc treatment. Treatment failure of maraviroc can result from the emergence of resistant CCR5 (r5)- using viruses with reduced susceptibility to MVC [42–45]. The contribution of the CCR5(r5)- and CXCR4(x4)-using component of the inpatient HIV-1 population to overall virus replication in susceptible cells is poorly understood. Each component of the dual tropic and dm virus can replicate in different T cell and macrophage subsets. In this study, we have determined the contribution of the r5-using and x4-using components of dm and dual tropic HIV on replicative fitness and determine if a specific phenotype may be dominant in disease.

Results

Identification of dual tropic HIV-1 isolates from patient samples

Two methods were employed to isolate HIV-1 from patient samples and then screen for viral tropism. The first method involved initial co-cultivation of PBMCs from an HIV-infected patient with PBMCs from an HIV-negative donor (Fig. 1a). These standard co-cultivations were performed on a set of patient samples from Zimbabwe as previously described [40]. This initial analysis screened over 28 HIV-1 isolates and found 10 that were syncytium inducing (SI) and capable of replicating on MT2 cells [46]. These primary SI HIV-1 were then equalized for RT activity (see “Methods”) and added to U87.CD4 cells expressing either CCR5 or CXCR4 [40] (Fig. 1b). Two (C19 and C27) of 10 primary HIV-1 isolates were dual tropic, i.e. capable of infecting and replicating in U87.CD4 cells expressing either CXCR4 or CCR5 as a co-receptor. HIV-1 C23 showed CCR5 (r5) just above the limit of detection whereas the remaining strains in this cohort were CXCR4 (x4) as previously described.

As part of another study that screened for co-receptor usage, HIV-1 env chimeric viruses were produced by homologous recombination in yeast rather than propagating HIV-1 from patient samples (Fig. 1c). The yeast-based recombination/gap repair cloning method can efficiently replace the yeast URA3 gene with the gp120 coding region of the env gene in our pREC_nfl_HIV-1_{NL4-3}Δgp120/URA3 vector (see “Methods”) [44, 47]. The efficiency of this cloning method limits the genetic bottleneck introduced by prolonged PBMC co-cultivation and subsequent virus propagations. Following env cloning, the pREC_nfl_env_{Ptx} vectors from each patient sample (Ptx—patient x) were purified from pooled yeast colonies (>1,000) and transfected into 293T cells. We have recently described an efficient cell-to-cell fusion assay to screen for co-receptor usage using the U87.CD4.CXCR4 or U87.CD4.CCR5 as target cells [48]. In our preliminary screen of 11 patient-derived env chimeric viruses, we identified three dual tropic HIV Envs (B9, B12, and B19), five r5s, and two x4s (Fig. 1d). The pREC_nfl_env vectors of B9, B12, and B19 were co-transfected with the complementing vector (pCMV_cplt) to produce replication-competent chimeric HIV as described [47]. This virus was then used to infect U87.CD4.CXCR4 and U87.CD4.CCR5 cells to confirm co-receptor usage. HIV-1 env_{B9} did not replicate in either cell line.

The x4 and r5 titers of each dual tropic primary and dual tropic env chimeric HIV-1 isolate along with a set of reference HIV-1 isolates were measured by standard TCID₅₀ assays on U87.CD4.CXCR4 and U87.CD4.CCR5 cells, respectively (Fig. 1e). The dual tropic C19 and C27 viruses had equal infectious r5 and x4 titers whereas the dual tropic env_{B12} and env_{B19} viruses had higher r5 than x4 titers. Interestingly, the infectious titers derived from TCID₅₀ assays using HIV-negative PBMCs was the same as the highest infectious titers from either U87.CD4.CXCR4 or U87.CD4.CCR5 cells. For at least the C19 and C27 viruses, the IU/ml on PBMCs did not reflect the simple addition of r5 and x4 infectious units suggesting that the clones within these dual tropic HIV-1 isolates may be primarily dual tropic rather than a mix of r5- and x4-only HIV-1 clones (Additional file 1: Table S1).

Phylogenetic analyses of the dm HIV-1 isolates and env chimeric viruses

Alignment of the env sequences confirmed that the bulk populations of the dual tropic C19 and C27 were subtype C whereas dual tropic env_{B12} and env_{B19} aligned with other subtype B HIV-1 sequences (Fig. 2a). In addition, the B12, B19, C19, and C27 viruses were not clonal but rather a population of related env sequences, based on approximately 10–15 sequenced clones from each (Fig. 2b–e).

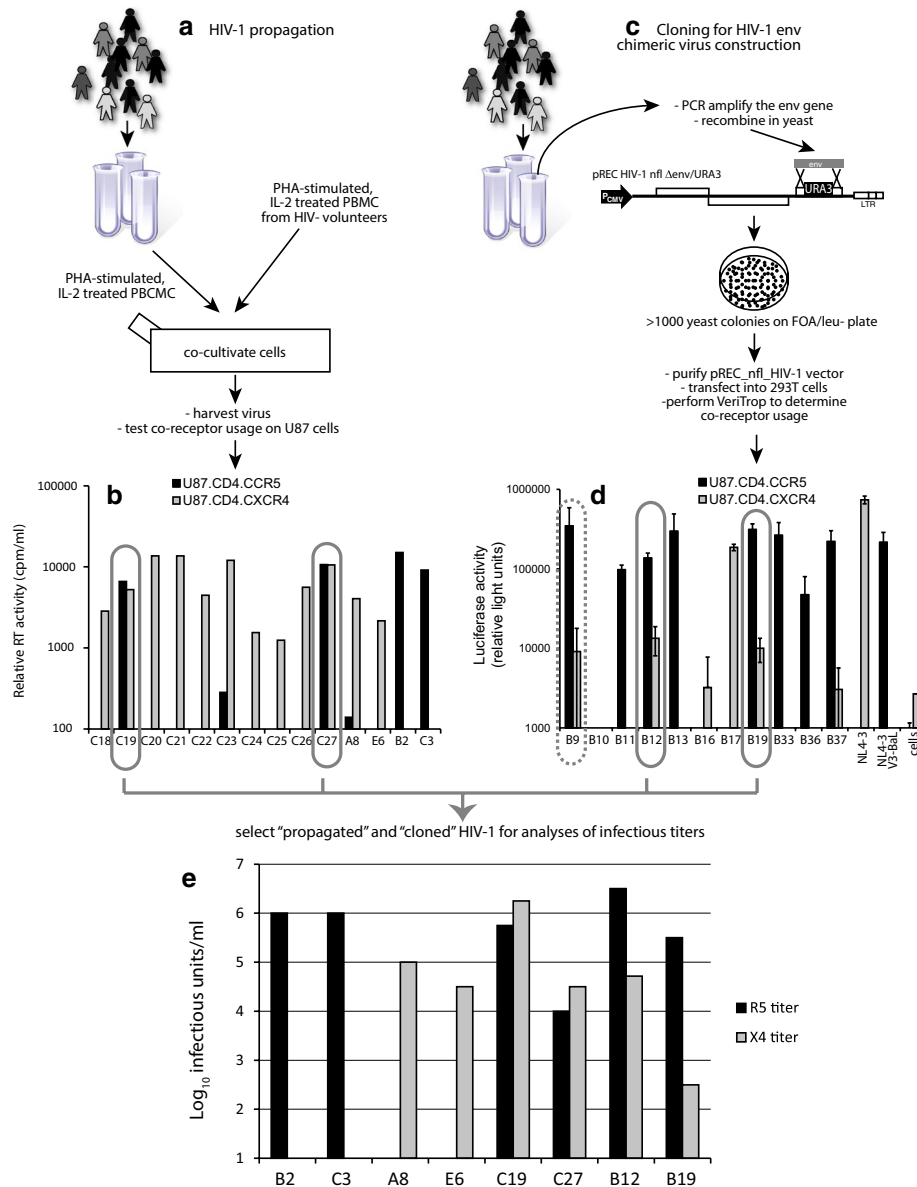


Fig. 1 Identification of dual/mixed isolates following HIV-1 propagation or construction of env chimeric viruses. **a** HIV-1 subtype C isolates from Zimbabwe were propagated by PBMC co-cultivation as described [46] and in the "Methods". **c** The HIV-1 env coding region of HIV-1 subtype B infected patients was PCR amplified and then cloned into pREC_nfl_HIV-1_{n14-3}Δgp120/URA3 via yeast recombination/gap repair [47]. The propagated HIV-1 isolates (**a**) and cloned env genes expressed following 293T transfection (**c**) were screened for co-receptor usage by infection(1) (**b**) or cell-to-cell fusion (**d**) (Veritrop; [48]) on U87.CD4 cells expressing either CXCR4 or CCR5(2). In the virus infection system (**b**), virus production was monitored by RT activity in supernatant [87]. In the cell-to-cell fusion assay (**d**), the ability of pREC_nfl_env_{ptx} to modulate receptor binding and cell fusion was monitored by firefly luciferase activity, i.e. Rev/Tat in the effector cell controlling Luc expression under the control of the HIV-1 LTR and rescued via the RRE housed in an intron with Luc [80]. Two primary HIV-1 isolates and two env chimeric viruses were propagated to measure infectious titers on PBMCs (Additional file 1: Table S1), U87.CD4.CCR5 and U87.CD4.CXCR4 cells (**e**) using the classical Reed–Munch approach [79].

Contribution of x4 and r5 variants to replicative fitness in dual tropic and mixed r5x4 primary HIV-1 isolate

In a previous study, we performed two pairwise competition experiments in PBMC cultures with 14 primary r5 and 15 x4 HIV-1 isolates [40]. The phylogenetic

relationships of these are shown in Fig. 2. To summarize, both the r5 and x4 HIV-1 subtype C isolates were less fit than the r5 and x4 HIV-1 isolates (respectively) of different group M subtypes. The poor replicative fitness of subtype C isolates has now been observed in over 2,000

head-to-head competitions with over 40 primary subtype C HIV-1 isolates [38–40, 49]. Although ten x4 HIV-1 subtype C isolates were dramatically less fit than any other x4 HIV-1 isolate, we also noted that two isolates, C19 and C27 were of a dual tropic phenotype and capable of infecting both CD4+/CCR5+ and CD4+/CXCR4+ susceptible cells [40]. When competing r5 against x4 HIV-1 isolates in PBMCs, the x4 viruses, regardless of subtype, had higher replicative fitness than an r5 HIV-1 isolate [40]. Thus, it is possible that reduced fitness of dual tropic C19 and C27 HIV-1 isolates may have been related to high proportion of r5 HIV-1 clones within these viruses.

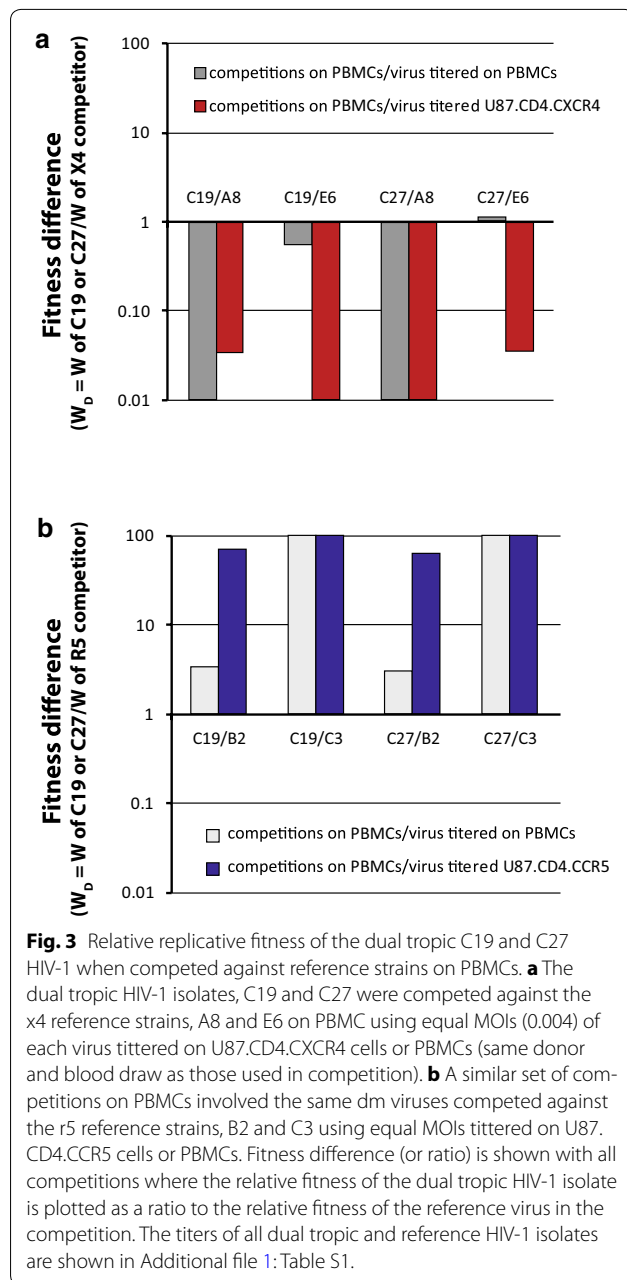
To determine the relative contribution of the CCR5-using and CXCR4-using phenotypes in these dual tropic r5x4 HIV-1 isolates, the r5x4 C19 and C27 HIV-1 isolates were competed against four reference HIV-1 isolates, the r5-using B2 and C3 primary isolates and the x4-using A8 and E6 viruses (Fig. 1e). The control x4 A8 virus is characterized as having a high replicative fitness whereas the x4 E6 is of lower replicative fitness when compared in direct competition with other x4 isolates [39, 40]. Our control r5 B2 virus was also selected based on a higher replicative fitness as compared to other r5 HIV-1 isolates whereas r5 C3 has low replicative fitness [39, 40]. First, the titers of dual tropic C19 and C27 viruses as well as control x4 A8 and E6 HIV-1 were calculated using both PBMCs (“full” titer) and U87.CD4.CXCR4 (“x4” titer) for TCID₅₀ assays (Additional file 1: Table S1).

Direct competitions showed that the dual tropic C19 and C27 HIV-1 were completely outcompeted by A8 but still could compete with the x4 E6 HIV-1 (Fig. 3a), when virus inoculums were equalized based on PBMC titers. When inoculums were equalized based on x4 titers, the fitness of dual tropic C19 and C27 further decreased in competition with x4 E6 (Fig. 3a). The dual tropic C19 and C27 were then competed in PBMCs against the r5 B2 and C3 control viruses using the equalized “full” titers determined on PBMCs or the equalized “r5” titers determined on U87.CD4.CCR5. As observed with nearly all x4-using viruses, the dual tropic C19 and C27 HIV-1 isolates were more fit than the r5 C3 virus when inoculating with the PBMC titers (Fig. 3b). However, dual tropic C19 and C27 were only slightly more fit than the r5 B2 HIV-1. The “CXCR4”-using component of the dual tropic HIV-1 isolates are not necessarily in competition with these r5 HIV-1 in PBMC since they likely infect different susceptible cells in the PBMC population. Competitions with the control r5 B2 HIV-1 suggest a low frequency of an r5 phenotype in the dual tropic C19 and C27 viruses. When using U87.CD4.CCR5-derived titers, it was not surprising that C19 and C27 could further out replicate the r5 B2 and C3 viruses (Fig. 3b) in competition considering

the fivefold increase in C19 and C27 inocula to equalize their “r5” titer with the titer of pure r5 B2 and C3 viruses.

In the competitions performed in PBMC cultures with PBMC-derived titers, C19 and C27 could replicate and compete with either the r5 (B2 and C3) or the x4 (A8 and E6) viruses (Fig. 3). In Fig. 4, we performed the same competitions as in Fig. 3 but prevented replication of either the “CXCR4”-using component (panel A) or the “CCR5”-using component (panel C) of the dual tropic C19 and C27 viruses. First, the C19+A8, C19+E6, C27+A8, and C27+E6 dual infections were added in equal “x4” titers (determined on U87.CD4.CXCR4 cells) to PBMC cultures in the presence of high maraviroc (MVC) concentrations. As described in Fig. 4b, the IC₉₉ concentration of MVC, a CCR5 antagonist [50, 51], resulted in complete inhibition of the r5 B2 and C3 viruses but no apparent inhibition of C19 and C27 in PBMCs. Lack of C19 and C27 inhibition by MVC suggests that the majority of the HIV-1 clones in these quasispecies may be dual tropic (r5/x4) and fully capable of infecting CXCR4+ cells in the PBMC cultures such that MVC does not inhibit any virus replication. The composition of the quasispecies in terms of co-receptor usage is described below (Fig. 1). Interestingly, there was no significant difference in the replicative fitness of C19 or C27 (versus control x4 A8 or E6 HIV-1) when comparing results of competitions performed in PBMCs, PBMCs + MVC, or in U87.CD4.CXCR4 cells (Fig. 4a). The latter condition would only support replication of the control x4 viruses and the “CXCR4”-using component of the dual tropic viruses. The reference viruses A8 and E6 were significantly more fit than the “CXCR4”-using component of the dual tropic C19 and C27 viruses regardless of the above conditions (Fig. 3a).

To limit replication to only the “CCR5”-using component of the dual tropic viruses, we performed competitions in PBMCs + AMD3100 or in U87.CD4.CCR5 cell cultures with the “r5” titers of these viruses. AMD3100, a CXCR4 antagonist [52, 53], showed strong inhibition of x4 A8 and E6 viruses as well as the dual tropic C19 and C27 viruses whereas the r5 B2 and C3 viruses were largely unaffected (Fig. 4d). Reduction in B2 and C3 replication, as compared to no-drug controls, relates to the cellular toxicity from high AMD3100 concentrations, i.e. required for complete inhibition of x4 virus replication but this did not have an effect on the competition experiments as later shown with the B12 and B19 viruses. Whereas the dual tropic C19 and C27 could easily out replicate the r5 B2 and C3 viruses in PBMC cultures, the “CCR5”-using component of these viruses were significantly less fit than B2 and C3 (Fig. 4c). This data is consistent with the relatively weak fitness of r5 subtype C HIV-1 isolates [38–40, 49]. Again these were based only



on the r5 phenotype present as r5 or r5/x4 clones in the quasispecies in C19 and C27. Thus, use of AMD3100 with PBMCs or U87.CD4.CCR5 cells would limit replication to only the CCR5-using and r5/x4 components on CCR5+ cells. In PBMCs (without drug) where the “CXCR4” component was not inhibited, the C19 and C27 were 50- to 100-fold more fit than the r5 B2 and C3 controls. After eliminating replication of the pure CXCR4-component with AMD3100, the r5 competitors, B2 and C3 were now significantly more fit than the “CCR5”-using phenotype of the dual-tropic C19 and C27 viruses

(Fig. 4c). The 10,000-fold shift in fitness when inhibiting the “CXCR4”-using component of the primary C19 and C27 isolates (Fig. 4c) would suggest that the majority of these dual-tropic virus populations were comprised of dual-tropic clones (e.g. clones that use either CXCR4 or CCR5 for entry, thus r5x4) and that the “CXCR4”-using phenotype (in absence of inhibition) was dominant in determining fitness.

Co-receptor usage of the C19 and C27 quasispecies

The predicted amino acid sequences of the V3 loop of each C19 and C27 clone (Fig. 2) were aligned and then used in various algorithms to predict co-receptor usage. Based on the C27 consensus sequence, five “groups” of C19 clones were identified based on a unique V3 loop amino acid profile (Additional file 1: Fig. S1). There were three “groups” of clones in the C27 isolate. The five C19 groups all had Ser and Lys at position 11 and 25 and were predicted x4 by the 11/25 rule (positive charge at either or both sites) whereas two neutral amino acids, G11 and A25 predicted a pure r5 phenotype in all of the C27 clones (Additional file 1: Fig. S1). Using the PSSM [54], Geno2Pheno algorithms [25], and PhenoSeq [55], all C19 and C27 clones were predicted to use at least CXCR4 for entry and that CXCR4-using clones may dominate the virus population (PSSM predicted a possible dual-tropism) (Additional file 1: Fig. S1).

The predicted co-receptor usage was then compared to actual co-receptor usage of the HIV-1 clones from C19 and C27. The HIV-1 Env genes sequenced in Fig. 2a and used for co-receptor prediction in Additional file 1: Fig. S1, were introduced into pREC_nfl_HIV-1_{nl4-3}Δenv/URA3 via yeast-based recombination and described above [42]. This Env expression vector was then used to pseudotype virus produced from 293T cells co-transfected with the pNL luc-AM vector [56]. Equal virus titers (based on RT activity) were used to infect U87.CD4 cells expressing either CCR5 or CXCR4. Three (C19-14, C19-30, and C19-29) of 26 C19 clones and 2 of 20 C27 env clones were non-functional. Of the functional clones, none of the C19 or C27 clones were purely CCR5-tropic whereas several clones were “pure” CXCR4-using, i.e. C19-17, -28, -10, -25 (Fig. 5c) and C27-7, -21, -8, -26 (Fig. 5d).

For these analyses, we sequenced approximately 500 nt for each clone and identified 15 unique C19 Env sequence patterns, five of these were described as “groups” I–V (Fig. 5a). Eleven unique sequences and four “groups” (I–IV) were identified in the C27 HIV-1 isolates (Fig. 5b). In general, the clones within the same group (sharing the same C2-V3 nt sequence) showed similar co-receptor usage profiles (compare Fig. 5a with c; b with d). However, this was not always the case. For example in group

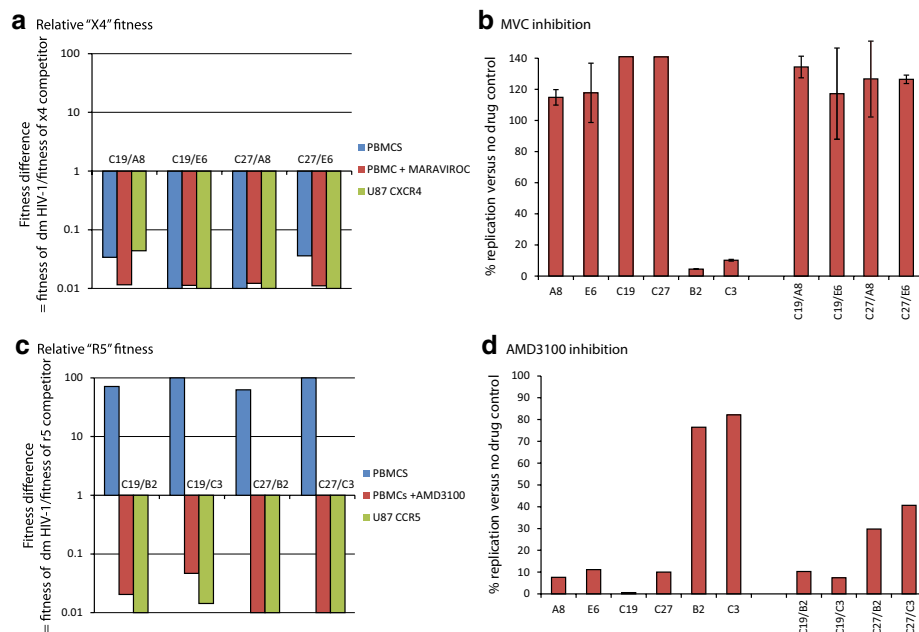


Fig. 4 Fitness of the dual tropic HIV-1 isolate when blocking the virus component using CCR5 or CXCR4. **a** The primary dual tropic HIV-1 isolates were competed against the x4 [50] titereds (all titered on U87.CD4.CXCR4 cells) in U87.CD4.CXCR4 cultures or in PHA-stimulated, IL-2 treated PBMC cultures with or without maraviroc. The fitness differences are plotted as described in Fig. 2 and in the "Methods". **b** The level of maraviroc inhibition of the mono-infections or dual infections was measured by relative RT activity in the cell free supernatant and plotted as a percentage of the no drug control. **c** The primary dual tropic HIV-1 isolates and r5 reference strains were also titered on U87.CD4.CCR5 cells and then competed together in PHA-stimulated, IL-2 treated PBMC cultures with or without AMD3100. The same dual infection with the same MOI (0.004) was repeated in U87.CD4.CCR5 cultures. The fitness differences are plotted as described in Fig. 2 and "Methods". **d** The level of AMD3100 inhibition of the mono-infections or dual infections was measured by relative RT activity in the cell free supernatant and plotted as a percentage of the no drug control. All experiments were performed in triplicate with the exception of **c, d** (performed in duplicate) due to limited supply of AMD3100.

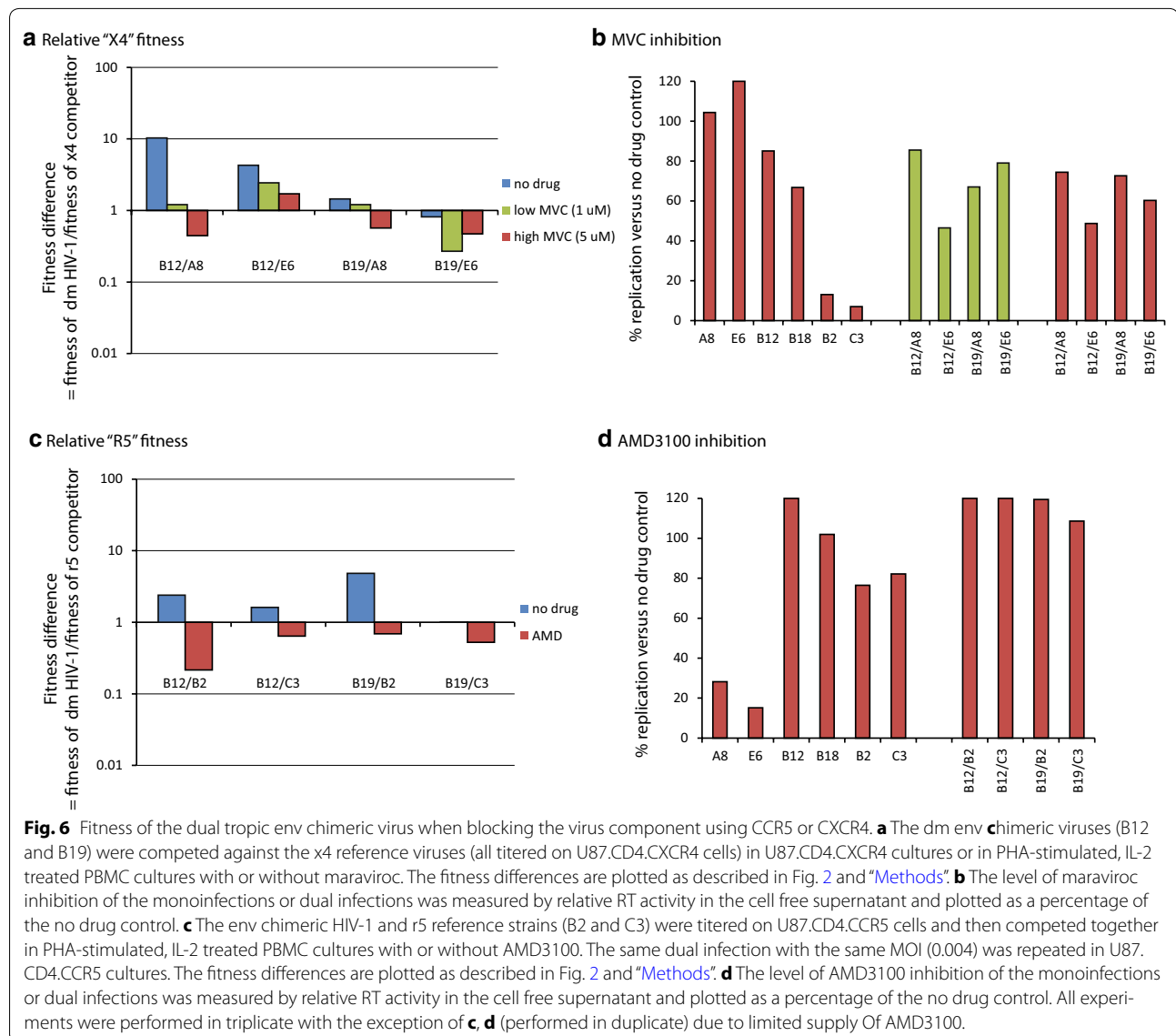
I, C19-17 and C19-28 appeared to be pure x4 tropic whereas clones C19-11, -20, and -24 could infect both CCR5 and CXCR4 expressing cells (r5x4). It is important to note that clones that share sequence identity in the C2-V3 region may still differ in the remaining ~2,200 nt of Env (not sequenced), specifically in the V1V2 region which has been shown to influence co-receptor usage. Nonetheless, similar co-receptor usage was observed for most clones that share at least the C2-V3 sequences.

Finally, we compared five assays to determine co-receptor usage of these primary isolates: (1) the relative infection by primary C19 and C27 HIV-1 isolate on U87.CD4.CCR5 cells and U87.CD4.CXCR4 cells (Fig. 1c, d), (2) the TCID₅₀ values derived on CCR5+ and CXCR4+ cells, (3) the relative inhibition by AMD3100 and MVC on PBMCs (Fig. 4b, d), (4) predicted co-receptor usage from the clones (Additional file 1: Fig. S1), and (5) the actual co-receptor usage of Env clones in the quasispecies (Fig. 5c, d). For these two dual tropic HIV-1 isolates, the vast majority of clones in the quasispecies were used both R5 and X4 co-receptors. As discussed below, the use of co-receptor antagonist coupled with the TCID₅₀ measurements on U87.CD4.CCR5 cells and U87.CD4.CXCR4

cells provides the best prediction of the co-receptor usage within the HIV-1 quasispecies. The C19 and C27 primary HIV-1 isolates achieved a dual/mixed phenotype through similar quasispecies compositions. Both had more clones using both co-receptors, very few using only CXCR4, and no pure r5 clones (Fig. 5c, d). As described in our fitness analyses, the CXCR4 usage phenotype of a dual tropic virus is largely dominant in replicative fitness such that when it is inhibited, there is a total loss in fitness of these isolates.

Contribution of the CXCR4 and CCR5 using variants to replicative fitness in env chimeric viruses

Predominance of the x4 and r5x4 clones in the C19 and C27 primary HIV-1 isolates may be related to inability of r5 clones to compete during propagation of these primary HIV-1 isolates (as previously described; [57]). As described above, we also identified two patients infected with dual tropic HIV-1 through env chimeric virus construction [42]. By this method, there is no propagation to result in selection. Bias in the HIV-1 env quasispecies composition could be introduced during PCR and cloning. However, the targets for primer annealing and yeast



B19 viruses compared to the A8 and E6 viruses (Fig. 6a). By reducing the MVC concentration, the B12 and B19 viruses regained fitness which again suggests that the "CCR5"-using component is contributing to the relative production of B12 and B19 in these competitions.

Prediction of low level x4 usage

With the B12 and B19 primary HIV-1 isolates, use of the co-receptor antagonists coupled with the TCID₅₀ measurements on U87.CD4.CCR5 cells and U87.CD4.CXCR4 cells provided the best prediction of co-receptor usage within the HIV-1 quasispecies. Thus, the x4-using or r5x4 component of the B12 and B19 chimeric env viruses was less than 1 and 0.1 % of the r5-using component, respectively. Based on the estimated low frequency of x4

or r5x4 clones, phenotypic analyses of co-receptor usage would require the cloning and analysis of >100 clones for B12 and >1,000 B19 clones (Table 1a, b) to identify r5 clones. Instead, we compared the predicted co-receptor usage for the B19 HIV-1 population found in: (1) env RT-PCR product from the original patient plasma sample, (2) in the pREC_nfl_envB12 plasmid population following yeast-based cloning of the B19 env PCR product, and (3) in the HIV-1 envB12 chimeric virus populations produced from 293T cells co-transfected with the pREC_nfl_envB12 + pCMV_cplt (see [42] for methods). The viral load in the B12 and B19 plasma samples was >50,000 copies/ml. Over 5,000 copies of RNA (from plasma and env chimeric virus) was reverse transcribed and then PCR amplified for subsequent 454 pyrosequencing of the

Table 1 Determination of predicted co-receptor usage in the HIV-1 isolate by 454 deep sequencing analyses

Culture	N	Plasmid	N	Plasma	N	Genotype		PSSM results			Geno2Pheno (5 %)	
						11/25	Prediction	% X4	% R5	Prediction	FPR (%)	Prediction
Predicted co-receptor usage for B19 clones ^a												
B19 C1	4,070	B19 P1	4,102	B19 R1	2,237	S/E	CCR5	0.11	0.62	CCR5 only	33.90	CCR5
B19 C2	25					S/E	CCR5	0.11	0.59	CCR5 only	10.90	CCR5
B19 C3	5					S/E	CCR5	0	0.1	CCR5 only	55	CCR5
B19 C4	3					S/E	CCR5	0.22	0.82	CCR5 only	41.20	CCR5
		B19 P2	3			S/E	CCR5	0.22	0.89	CCR5 only	50.50	CCR5
				<i>B19 R2</i>	<i>51</i>	<i>S/K</i>	<i>CXCR4</i>	<i>0.24</i>	<i>0.92</i>	CCR5 only	7.80	CCR5
				B19 R3	13	S/E	CCR5	0.22	0.86	CCR5 only	26.90	CCR5
				B19 R4	11	S/E	CCR5	0.11	0.42	CCR5 only	72	CCR5
				B19 R5	7	S/E	CCR5	0.11	0.46	CCR5 only	47.70	CCR5
				B19 R6	7	S/E	CCR5	0.11	0.46	CCR5 only	47.70	CCR5
				B19 R7	6	S/E	CCR5	0.11	0.46	CCR5 only	47.70	CCR5
				B19 R8	6	S/E	CCR5	0.11	0.46	CCR5 only	47.70	CCR5
				B19 R9	6	S/E	CCR5	0.11	0.46	CCR5 only	47.70	CCR5
				B19 R10	5	S/E	CCR5	0.11	0.6	CCR5 only	42.30	CCR5
				B19 R11	4	S/E	CCR5	0.11	0.47	CCR5 only	18.20	CCR5
				B19 R12	4	S/E	CCR5	0.09	0.39	CCR5 only	59.80	CCR5
				B19 R13	3	S/E	CCR5	0.11	0.46	CCR5 only	47.70	CCR5
				<i>B19 R14</i>	<i>3</i>	<i>S/K</i>	<i>CXCR4</i>	<i>0.29</i>	<i>0.95</i>	<i>CXCR4 capable</i>	<i>3.20</i>	<i>CXCR4</i>
Plasmid	N	Culture	N	Genotype		PSSM Results			Geno2Pheno (5 %)			
				11/25	Prediction	% X4	% R5	Prediction	FPR (%)	Prediction		
Predicted co-receptor usage for B12 clones ^a												
B12_P1	3,611	B12_C1	1,405	S/Q	CCR5	0.31	0.96	CCR5 only	20.40	CCR5		
B12_P2	55	B12_C2	19	S/Q	CCR5	0.31	0.96	CCR5 only	20.40	CCR5		
B12_P3	24	B12_C3	10	S/Q	CCR5	0.31	0.96	CCR5 only	20.4	CCR5		
B12_P4	21	B12_C4	6	S/Q	CCR5	0.27	0.95	CCR5 only	18.80	CCR5		
		B12_C5	6	S/Q	CCR5	0.33	0.96	CCR5 only	22.60	CCR5		
		B12_C6	6	S/Q	CCR5	0.31	0.96	CCR5 only	20.40	CCR5		
		B12_C7	5	S/Q	CCR5	0.36	0.98	CCR5 only	10.50	CCR5		
		B12_C8	5	S/Q	CCR5	0.36	0.98	CCR5 only	17.10	CCR5		
B12_P10	3	B12_C9	5	S/Q	CCR5	0.33	0.96	CCR5 only	20.20	CCR5		
B12_P17	3	B12_C10	4	S/Q	CCR5	0.31	0.96	CCR5 only	20.40	CCR5		
		B12_C11	4	S/Q	CCR5	0.47	0.98	CCR5 only	36.90	CCR5		
B12_P15	3	B12_C12	3	S/Q	CCR5	0.31	0.96	CCR5 only	20.40	CCR5		
		B12_C13	3	S/Q	CCR5	0.51	0.98	CCR5 only	35.60	CCR5		
B12_P8	4	B12_C14	3	S/Q	CCR5	0.33	0.96	CCR5 only	49.70	CCR5		
		B12_C5	3	S/Q	CCR5	0.33	0.98	CCR5 only	14.40	CCR5		
B12_P5	7	B12_C1	1,405	S/Q	CCR5	0.31	0.96	CCR5 only	20.40	CCR5		
<i>B12_P6</i>	<i>6</i>	<i>B12_C2</i>	<i>19</i>	<i>S/K</i>	<i>CXCR4</i>	<i>0.53</i>	<i>0.99</i>	<i>CXCR4 capable</i>	<i>4.80</i>	<i>CXCR4</i>		
B12_P7	4	B12_C3	10	S/E	CCR5	0.36	0.98	CCR5 only	1.70	<i>CXCR4</i>		
B12_P9	3	B12_C4	6	S/Q	CCR5	0.29	0.95	CCR5 only	13.10	CCR5		
B12_P11	3	B12_C5	6	S/Q	CCR5	0.31	0.96	CCR5 only	20.40	CCR5		
B12_P12	3	B12_C6	6	S/Q	CCR5	0.42	0.98	CCR5 only	6.80	CCR5		
B12_P13	3	B12_C7	5	S/Q	CCR5	0.31	0.96	CCR5 only	17.80	CCR5		
B12_P14	3	B12_C8	5	S/Q	CCR5	0.33	0.96	CCR5 only	7.90	CCR5		
B12_P16	3	B12_C9	5	S/Q	CCR5	0.29	0.95	CCR5 only	8.20	CCR5		
B12_P18	3	B12_C10	4	S/Q	CCR5	0.51	0.98	CCR5 only	6.80	CCR5		

Italics values indicate clones with different amino acids at the 11/25 positions

^a The C2-V3 coding regions was RT-PCR amplified with barcoded 454 primers from the plasma RNA (only for B12), from the plasmid population following yeast recombination (no RT step), and from RNA of culture supernatant. Amino acid alignments grouped identical clones. Predictive co-receptor algorithms, 11/25, PSSM, and Geno2Pheno were run on the V3 loop amino acid sequences. FPR false positive rate for Geno2Pheno at 5 %.

V3 loop as described in the “Methods”. Over 100,000 copies of DNA plasmid was sampled for 454. Unfortunately, the RT-PCR products of the B19 plasma sample (58,000 copies/ml) were unavailable for these analyses. An average depth of ~1,500–4,000 reads were obtained per sample. Only 105 nt of the V3 loop were analyzed and used to predict co-receptor usage based on 11/25 rule, subtype specific PSSM, Geno2Pheno (G2P, with a 5 % FPR), and PhenoSeq (Table 1a, b). For B19 plasma sample, 95 % of the 2,363 V3 reads were identical and predicted to be r5 by all three algorithms. Approximately 2 % of the reads ($N = 51$) had Lys at amino acid position 25 in the V3 loop and were predicted by PSSM and G2P to be x4 (Table 1a). Consistent with the low titers of x4 versus r5 in this B19 env chimeric virus (<0.1 %), we could not detect an x4 clone in ~4,100 V3 reads from the plasmid or the resulting virus. For B12 env chimeric virus, 10 clones (0.3 %) were predicted as x4 using by G2P but only 6 of these carried Lys at position 25 and were x4 using based on PSSM (Table 1b). Again, the percentage of predicted x4 or dual tropic clones in the B12 chimeric virus population was consistent with the relative x4 and r5 titers (Fig. 1e).

Discussion

HIV-1 disease progression is associated with the appearance of viral variants that are able to use an expanded repertoire of co-receptors for cell entry. Three phenotypes of HIV-1 isolates have been described: the r5 isolates that are more frequently transmitted and also predominate during the asymptomatic period of infection, the x4 variants that predominate in about 50 % of the infected individuals in the late phase of infection, dm and dual tropic isolates that could represent a transitional phenotype from r5 to x4. The x4, dual tropic and dm viruses have been associated with rapid CD4 declines and progression to AIDS and death but the prevalence/appearance of x4, dm and dual tropic HIV-1 was originally described for subtype B infections [28–31, 36]. A switch to an x4 or dual tropic phenotype in HIV-1 subtype C infections is quite infrequent [58] whereas subtype D HIV-1 infections have much higher prevalence of x4/dual tropic viruses, which also appear earlier in disease [59, 60]. However, Johnston et al. [61] screened 28 subtype C patients and 20 of these were found to be x4 or dual tropic. The high x4/dual tropism in this cohort was attributed to the fact that all these patients had been on antiretroviral therapy and for most of them, there was evidence of resistance. It is also important to note that the propagation of primary HIV-1 isolates on PHA-activated PBMCs commonly enriches for CXCR4-using virus even in HIV-1 populations with a low frequency x4 compared to r5 variants [57]. Early studies on HIV-1 tropism which defined the syncytia inducing (SI) and non-SI phenotypes

relied on propagation which may have favored replication of the SI, T cell tropic HIV-1 clones (now defined as x4).

The rate of x4, dm or dual tropic HIV-1 outgrowth during propagations from patient samples typically depends on both the replicative fitness of x4 and r5 HIV-1 clones. This replicative fitness may also be one of many variables contributing to the appearance of x4 viruses during disease progression. As described earlier, other factors may include availability of target cells, co-receptor expression on susceptible cell subsets, differential immune response to x4 and r5 viruses, and preferential transmission of r5 variants followed by a slow evolution to x4 virus. Increased “in vivo” fitness of r5 HIV-1 variants over low frequency x4 variants in the inpatient HIV-1 population is quite apparent based on various MVC treatment studies [62, 63]. Treatment failure of maraviroc can result from the emergence of resistant CCR5 (r5)-using viruses with reduced susceptibility to MVC [42–45]. However, the most common escape pathway for MVC resistance relates to the outgrowth of the intrinsically resistant x4 variants in a treated individual. In almost all cases, the x4 virus was found within the quasispecies prior to the treatment and often at a frequency requiring sensitive phenotypic or genotypic assays for detection [62, 63]. In the environment of MVC treatment, x4 emerged due to increased fitness over r5 and possibly dual tropic viruses in the inpatient HIV-1 population. Based on these findings, the relative contribution of r5 and x4 virus components to the overall fitness of a primary isolate as well as the emergence of dual tropic HIV-1 isolate may have important implications on subsequent disease progression or response to MVC treatment.

In this study, we have measured the ex vivo replicative fitness of two dual tropic subtype C HIV-1 isolates and two dual tropic env chimeric viruses under different conditions. In our previous studies on replicative fitness involving pairwise competitions in PBMCs, it was important to standardize the initial virus inoculums via infectious titers, commonly calculated as TCID₅₀ values determined with PBMCs from the same donor and blood draw as those used in the competitions [57, 64]. Subsequent dual infections with two equal inocula of viruses of the same phenotype (i.e. r5 vs. r5 viruses or x4 vs. x4 viruses) will then compete for the same susceptible cell population within PBMCs. When dual infections are performed with an r5 and x4 virus, the viruses do not necessarily compete since they replicate in different cell populations within PBMCs and yet, the x4 viruses almost always replicate with faster kinetics to dominate the cultures simply because they have a stronger pathogenic phenotype [41, 57]. Thus, we wanted to assess the relative contribution of the CXCR4 and CCR5 components to the replicative fitness of dual tropic HIV-1 strains. We

first screened for dual tropism in a collection of primary HIV-1 isolates and in env chimeric HIV-1 isolates constructed from patient plasma samples. We obtained two dual tropic primary HIV-1 isolates (C19 and C27) and two dual tropic env chimeric virus constructs (B12 and B19).

Co-cultivation of HIV + PBMCs with PBMCs derived from HIV-negative donors is a common method to obtain primary HIV-1 isolates. Several studies have indicated that x4 or dual tropic clones can expand more rapidly than r5 clones [57, 65]. As a consequence, x4 clones may predominate the primary HIV-1 isolates even if the original HIV-1 quasiespecies in the patient PBMCs had very low frequency of x4 versus r5 clones. When we have examined the x4 frequency in several primary dual tropic HIV-1 isolates, the x4 or r5x4 clones typically predominate the quasiespecies (as with C19 and C27) [57]. Because of this selection bias during virus propagation, we now clone the env gene from patient samples into a plasmid with the HIV-1 NL4-3 backbone and then produce virus by direct DNA transfection. Typical bacterial cloning of ~3 kbp fragment into a ~8 kbp DNA vector is quite inefficient, produces few bacterial colonies containing the plasmid with insert, and results in an undesired, severe genetic bottleneck on the HIV-1 env quasiespecies. As previously described, cloning of this env product into the pREC_nfl_HIV-1_{NL4-3}Δgp120/URA3 construct via yeast homologous recombination/gap repair results in thousands of yeast colonies and a minimal genetic bottleneck in the env quasiespecies [47]. Nonetheless, complementation with the patient-derived gp120 coding region (or entire env gene) and the NL4-3 backbone can occasionally result in a “dead” virus [66].

Using the primary HIV-1 isolates and the env chimeric viruses for fitness studies, we observed significant differences that reflected the r5, x4, and r5x4 composition in the quasiespecies. Both x4r5 and x4 clones were observed in C19 and C27 primary HIV-1 isolates (1) as predicted by co-receptor usage algorithms applied to clonal sequencing analyses and (2) as determined by a phenotypic co-receptor usage assay applied to HIV-1 clones in the quasiespecies. Interestingly, the “CXCR4”-using component was dominant over the “CCR5”-using component in determining replicative fitness of the r5x4 population in the C19 and C27 primary isolates (pure x4 clones were rare and r5 clones were absent). When the “CXCR4”-using component was completely inhibited in these primary HIV-1 isolates, the “CCR5”-using component of the r5x4 population could not compete with control r5 HIV-1 isolates. Interestingly, when competitions were limited to the “CCR5”- or “CXCR4”-using component in the primary r5x4 HIV-1 isolate, the replicative fitness was quite similar to related primary r5 and x4 HIV-1 isolates. The

r5- and x4-using components of the C19 and C27 viruses were significantly less fit than the r5 B2 and C3 HIV-1 isolates or the x4 A8 and E6 HIV-1 isolates, respectively. We have published several studies showing that primary subtype C HIV-1 isolates are less fit than any other group M HIV-1 isolate (determined in head-to-head competitions in PBMCs from multiple donors) [38–40, 49]. It is interesting to note that from our unpublished and published data, subtype C competes well with other subtypes in ex vivo competition in langerhans cells implying that the transmission fitness of this subtype is comparable to that of other subtypes. However, after entry into cells, the pathogenic fitness of subtype C is lower than other subtypes, a possible explanation of the dominance of r5 tropism in subtype C which leads to a slower disease progression. In general, the less virulent r5 variants are more common during late subtype C infection.

Based on previous studies [67, 68] it appears that dual tropic isolates may be evolutionary intermediates. The early phase of inpatient HIV-1 evolution consists predominantly of r5 variants possibly with a few r5x4 but likely minimal or no x4 variants [57, 69]. During the time of infection and possibly the absence of treatment, the r5x4 variants may increase in frequency and possibly mutate to a pure x4 variant [65, 70, 71]. However, previous studies also suggest that these r5x4 and x4 variants often represent separate lineages from CCR5 variants with deep roots within the inpatient phylogenetic tree [72]. The actual mutational pathways from a single HIV-1 clone that leads to a phenotypic switch from r5 to x4 may arise with significant cost to replicative fitness [73]. These findings imply that this shift in tropism may be under selective pressure, i.e. increased availability of CXCR4+ versus CCR5+ susceptible cells. In our studies it appears that the “CXCR4”-using component of the r5x4 clones in the C19 and C27 were dominant over the “CCR5”-using component in determining replicative fitness. The “CXCR4”-using component of the dual tropic C19 and C27 HIV-1 isolates were generally less fit than the control x4 A8 and E6 HIV-1 isolates. However, we cannot assume that this reduced fitness was due to the initial mutation pattern leading to a switch in r5 to x4 since subtype C HIV are generally less fit than any other group M HIV-1 isolate.

The findings with C19 and C27 primary HIV-1 isolates might suggest that the “CXCR4”-using component of a dual tropic HIV-1 would dominate over the “CCR5”-using component in replicative fitness. However, this finding is misleading for patients harboring mixed X4 and R5 HIV viruses. As noted earlier, the primary HIV-1 isolates such as C19 and C27 primarily contain x4 or r5x4 clones and only low levels of r5 clones due to selection during PBMC co-cultivation/propagation. Within

patients, x4 or r5x4 HIV-1 are often found at low frequency in the quasispecies. Thus, we constructed the B12 and B19 env chimeric viruses from patients with mixed X4 and R5 HIV-1. In these viruses, the r5 clones were 100- and 1,000-fold more abundant than the x4 or r5x4 clones. These findings were confirmed by (1) measuring infectious titers in both U87.CD4.CCR5 cells and U87.CD4.CXCR4 cells and by (2) predicting co-receptor usage from approximately 1,000–4,000 V3 loop sequence reads (derived by 454 pyrosequencing of ~10,000 patient-derived DNA templates). In the B12 and B19 env chimeric viruses, the CCR5 component derived from the pure r5 clones did contribute to overall replicative fitness. The more dominant “CXCR4” component in the C19 and C27 resulted in the ability to compete with the control x4 A8 and E6 HIV-1. In contrast, high levels of “CCR5” versus the “CXCR4” component in the B12 and B19 env chimeric virus resulted in low replicative fitness when competed against x4 A8 and E6 HIV-1. In general, x4 HIV-1 out replicates r5 HIV-1 in PBMC cultures. When adjusting for the r5 or x4 titers, the “r5” or “x4” components of B12 and B19 HIV-1 had similar fitness and were able to compete with the r5 (B2 and C3) and x4 (A8 and E6) control strains. These findings are consistent with our previous studies in that subtype B x4 or r5 HIV-1 isolates have, on average, higher replicative fitness than HIV-1 isolates from other group M subtypes [38–40].

Previous studies suggest a dominance of the “CXCR4”-using over the “CCR5”-using phenotype in HIV-1 defined as dual tropic/mixed tropic. As a consequence, a proposed x4 dominance in mixed X4 and R5 HIV-1 has been implicated in MVC treatment outcome and disease progression. Again, our findings with the C19 and C27 viruses suggest that use of primary HIV-1 isolates may over-emphasize this x4 dominance. The x4 or x4r5 HIV clones are typically dominant within the inpatient quasispecies of some patients during late infection [65, 74]. Otherwise, x4 or x4r5 HIV clones are found at low frequencies compared to the pure r5 clones in the inpatient quasispecies during asymptomatic disease. Furthermore, “CXCR4”-using HIV isolates are rare in subtype A and C [27, 58, 75] but more frequent in subtype B and D infected patients [59]. The x4 HIV strains typically have faster replication kinetics than r5 HIV but due to limited CCR5+/CXCR4+/CD4+ cells in PBMC cultures, these two HIV-1 phenotypes are not in direct competition in our studies. When we equalize for r5 or x4 titers in the dual tropic HIV-1 and limited replication to the “CCR5”-using and “CXCR4”-using components, we found that fitness of C19 and C27 virus reflected that of other subtype C HIV-1 isolates, i.e. less fit than most group M HIV-1 isolates. In contrast, even the low level of x4 or x4/r5 B12 and B19 HIV-1 had replicative fitness

comparable to the control x4 viruses. However, without adjusting virus titers for the “CXCR4-using” component, this low level of x4 HIV-1 had minimal impact on replicative fitness of this env chimeric virus which was dominated by r5 clones. These findings suggest that detection of low frequency x4 clones in the HIV-1 quasispecies is not necessarily synonymous with rapid HIV replication kinetics and faster disease progressions. However, the overall replicative fitness in PBMCs regardless of the x4 and r5 composition remains a strong correlation of disease progression [41, 57, 76–78].

Conclusions

In this study, we show that x4 component is dominant in replicative fitness but is typically of low frequency compared to r5 HIV-1 in most dual tropic HIV-1 quasispecies. Based on findings in this study, the emergence of dual/mixed tropic viruses may have important implications on response to maraviroc containing regimens. Furthermore, although the “CXCR4”-using phenotype is of low frequency in the dual/mixed population, it may have a selective advantage in patients failing maraviroc. Based on our findings that the “CXCR4”-using phenotype is the major determinant of replicative fitness, this may have important implications on disease progression.

Methods

Cells

293T cells (human embryonic kidney cells) were grown on Dulbecco’s Modified Eagle’s medium (DMEM) supplemented with 10 % fetal bovine serum (FBS) (Cellgro), 100 U/ml of penicillin and 100 µg/ml of streptomycin (Cellgro). U87.CD4 (human glioma cells) expressing either CCR5 or CXCR4, obtained from the NIH AIDS Research and Reference Reagent Program (distributed by Dr. D Littman) were maintained in complete DMEM medium supplemented with 1 mg/ml of geneticin G418 (Life Technologies, Inc.) and 5 µg/ml puromycin to maintain receptor and coreceptor expression [5]. Peripheral blood mononuclear cells (PBMCs) from HIV-negative blood donors were obtained by Ficoll-Hypaque density centrifugation of heparin treated venous blood. These were stimulated with 2 µg/ml of phytohemagglutinin (PHA; Gibco BRL) and 1 µg/ml of interleukin-2 (IL-2; Gibco BRL) in complete RPMI 1640 containing 2 mM L-glutamine for 3–4 days.

Virus propagation, chimeric virus production, and titers

Subtype C syncytium inducing (SI) HIV-1 isolates obtained from patients who had been on reverse transcriptase inhibitors for an average of 14.4 months [46] as well as the non-SI and SI-using reference viruses [38, 40] (Table 1) were grown in PHA-activated PBMCs over

a period of 2 weeks. RT assays were performed at different time points to measure virus production. As determined by Abraha et al. [40], co-receptor usage was then estimated by exposing U87.CD4.CCR5 and CXCR4 cells to each virus.

In a subtype B cohort analyses, RNA was extracted from plasma samples from 11 untreated, HIV-infected patients (investigators were blinded to all patient demographics). The HIV-1 *env* gene was then reverse transcribed-PCR amplified from the plasma RNA with the Env-End primer as described [44]. The gp120 regions were then PCR amplified using primers F_gp120 (5'-GACAGGTTAATTGATAGACTA-3') and B_gp120 (5'-CTTCCTGCTGCTCCCAAGAAC-3'). Briefly, these gp120 PCR products were cotransformed with SacII-linearized pREC_NFL_Δgp120/URA3 into *Saccharomyces cerevisiae* MYA-906 cells (ATCC). Following homologous recombination, plasmids were extracted from the yeast cells and transformed into electro-competent *Escherichia coli* Stb14 cells (Invitrogen). Individual bacterial colonies were grown, and plasmids were extracted using Qiagen miniprep kits. The cloning procedures have been extensively described [44, 47]. Of the 11 plasma samples from HIV-infected patients, we obtained 3 pREC_nfl_gp120 vectors harboring a functional HIV-1 *env* gene from the patient. The pREC_nfl_gp120 vectors were then co-transfected into 293T cells along with the complementing vector, pCMV_cplt to produce infectious virus as described [47]. To avoid confusion, we will refer to the viruses with an NL4-3 backbone and containing the patient's gp120 coding region as *env* chimeric viruses.

TCID₅₀ determination for all the viruses was performed on PHA/IL-2 stimulated HIV negative donor PBMCs as well as on U87.CD4.CCR5 and CXCR4 cells. For PBMCs, 100,000 cells were added to each of the wells in a 96 well plate. Ten-fold serial dilutions of each virus were made and 100 μl were added to each well containing the cells with each dilution performed in triplicates [64]. The viruses were grown in RPMI-1640 complete media. Similar dilutions were made for the U87 cells, 10,000 cells per well were plated in 96 well plates in DMEM complete media containing G418 and puromycin 24 h prior to infection. At the time of infection, media containing selection antibiotics was removed and replaced with DMEM with no selection. Supernatants were harvested at different time points to measure RT activity. TCID₅₀ for each virus was calculated using the Reed and Muech method [79].

Veritrop cell-to-cell fusion assay

A new cell fusion assay to measure co-receptor usage to a 2 % level has been recently described [48]. Briefly, 2 μg of pREC_nfl_env_{ptX} is transfected into 293T cells using

Fugene as described [48]. After 24 h, the transfection reagent is removed by cell washing and the 293T cells are layered over U87.CD4.CCR5 and CXCR4 cells transfected with pDM1.1 [80]. Luciferase is only produced from pDM1.1 in the presence of Tat and Rev derived from the 293T cells fused with U87 cells transfected with the pREC_nfl vector, i.e. expressing the entire HIV-1 proteome.

Determination of fitness of the dual tropic isolates

Fitness of the dual tropic isolates was determined on both PBMCs and U87.CD4.CCR5 and CXCR4 cells using dual competition assays described previously [38–41, 57]. Briefly, for PBMCs, to determine the effect of the “CCR5”-using phenotype on fitness, the dual-tropic isolates were competed against r5-using isolates (C3 and B2) at a multiplicity of infection (MOI) of 0.004 in the presence or absence of AMD3100, a CXCR4 coreceptor antagonist. AMD3100 was used at a concentration of 0.1 μM (>the inhibitory dose for 99 % inhibition or IC₉₉). To determine the role of the “CXCR4”-using phenotype in fitness of the dual tropic isolates, the dual-tropic isolates were competed against x4-using isolates (E6 and A8) in the presence or absence of maraviroc at an MOI of 0.004. Maraviroc was used at a concentration of 1 μM (IC₉₉).

On U87 cells, the role of the “CCR5” phenotype on fitness of the dual tropic isolates was determined by competing the dual tropic isolates against the r5 using competitor (B2 and C3) viruses on U87.CD4.CCR5 cells at an MOI of 0.004. The same isolates were competed against the x4-using competitor viruses (E6 and A8) on U87.CD4.CXCR4 cells at an MOI of 0.004. For all the competition experiments, mono-infections representing each of the viruses in the competition were included. Virus production was monitored over a period of time by measuring RT activity at different time points. At the time of peak virus production, the cells were harvested and DNA was extracted using the Qiagen DNA extraction kit.

Determination of viral fitness using heteroduplex tracking assay

To determine viral fitness, the *env* gene was PCR amplified in the C2-V3 region using a nested PCR. For the first round ENV B (5'-AGAAAGAGCAGAAGACAGTG-GCAATGA) and antisense primer ED 14 (5'-TCTT-GCCTGGAGCTGTTTGTATGCCCCAGAC) were used to amplify a 1,400 bp of the *env* gene. The second round PCR was performed using a sense primer E80 (5'-CCAATTCCCATACATTATTGTG) and an antisense primer E125 (5'-CAATTTCTGGGTCCCCTC-CTGAGG) amplifying a 480 bp fragment of the C2-V3

region. PCR conditions were as described. The PCR products were run on a 1 % agarose gel stained with 1 % ethidium bromide and viewed under UV illumination. C2-V3 fragment amplified from subtypes D and E with a ^{32}P labeled E80 and unlabeled E125 primer were used as probes. To determine the relative virus production for each virus in the competition, a heteroduplex tracking assay (HTA) was used as previously described [38–41]. Heteroduplexes were separated on a 6 % non-denaturing gel and quantified using a Molecular Imager FX (BioRad) phosphorimager. Virus production for each of the virus in the competition (f_o) was divided by the initial proportion in the inoculum (i_o) to get the relative fitness value ($w = f_o/i_o$) [38–41]. The relative fitness value of each isolate in the competition is a measure of the fitness difference W_D between the two HIV-1 variants ($W_D = W_M/W_L$), where W_M and W_L correspond to the relative fitness of the more and less fit virus.

Plasmid generation and env sequencing

The env gene (gp160) was PCR amplified from each of the dual-tropic isolates by nested PCR to obtain a 2,750 bp fragment. The first round PCR was amplified using Env A 5'-GGCTTAGGCATCTCCTATGGCAGGAAGAA (5,954–5,982 positions of the HXB2 genome) and Env M 5'-TAGCCCTTCCAGTCCCCCTTTTCTTTTA (9,068–9,096). The second round PCR was carried out with Kpn-1Env TGTGGGTCACAGTCTATTATGG (6,325–6,346) and Env-End 5'-CTTTTTGACCACTTGCCACCCAT (8,797–8,819) primers. This PCR product was then cloned into a yeast vector by homologous recombination as described elsewhere. Briefly, the PCR amplified gp160 was cloned into a SacII linearized pREC_nfl_HIV-1_{nl4-3}env/URA3 vector by homologous recombination as already described [81, 82]. Thirty colonies were picked for each of the dual-tropic isolates. For each of these, the C2-V3 region was sequenced as described above and then analyzed to determine coreceptor usage via the 11/25 rule or with the webPSSM [54] and Geno2Pheno algorithms [25]. Sequences were aligned using ClustalX [83] and MUSCLE [84, 85] followed by phylogenetic tree constructions using TreeView [86].

Pyrosequencing of the B12 and B19 env chimeric viruses was performed on PCR amplicons of the C2-V3 region. Nested PCR products for sequencing were generated using the external products described above as templates with custom designed fusion oligos that contained the 454 adaptor sequences (Roche Lib-A Primer A and Primer B), followed by a 10 basepair Multiplex Identifier (MID) sequence to permit sample pooling, and lastly the HIV-1 template specific oligos E110 and E125 (5'-CTGTAAATGGCAGTCTAGCAGAA-3' and

5'-CAATTTCTGGGTCCCCTCCTGAGG-3', respectively). Samples were quantified by fluorometry with the Quant-iT PicoGreen dsDNA Assay Kit (Life Technologies), pooled in equimolar concentrations, and sequenced on a 454 GS Junior System (Roche Diagnostics) using the GS Junior Titanium Sequencing chemistry. The resulting reads were trimmed to exclude the MIDs and primer sequence, and low-quality reads were filtered using the GS Run Processor according to length and quality scores. Multisequence alignments of reads were constructed using MUSCLE (PMID: 15034147), and all phylogenetic analysis was performed with MEGA5 (PMID: 21546353).

Pseudotyping single cycle assays

The pNL luc-AM vector described by Pugach et al. [56] was cotransfected along with one of each pREC env clonal plasmid (thirty for each dual tropic isolate) into 293T cells using effectene transfection kit (Qiagen, Valencia, CA, USA). Pseudovirus-containing supernatants were harvested from each well at 72 h post transfection and then used to infect both U87.CD4.CCR5 and U87.CD4.CXCR4 cells in triplicate. After 72 h at 37°C in 5 % CO₂, the supernatant was removed and cells were washed with 200 µl of phosphate buffered saline (PBS, Cellgro). 100 µl of cellgro lysis buffer was added to lyse the cells. 50 µl of the Luciferin Steady Glo substrate was added to 50 µl of lysate supernatant to measure luciferase activity.

Additional file

Additional file 1. Characteristics of primary HIV-1 isolates.

Abbreviations

r5: CCR5-using; x4: CXCR4-using; dm: dual mixed; HIV: human immunodeficiency virus; Env: envelope glycoprotein; PBMC: peripheral blood mononuclear cells; MVC: maraviroc; TCID₅₀: infectious dose of 50 % infectivity in tissue culture.

Authors' contributions

All authors were involved in the preparation of this manuscript. ILN led the studies described herein and performed the majority of the experimentation. DMT and AA were involved in determining replicative fitness. FK propagated the viruses. RG and OJ performed the phenotypic co-receptor experiments. GN performed all of the sequence and phylogenetic analyses. EJA together with ILN conceived the project, supervised the research, and wrote the manuscript. All authors read and approved the final manuscript.

Author details

¹ Division of Infectious Diseases, Department of Medicine, Case Western Reserve University, 10900 Euclid Ave., Cleveland, OH 44106, USA. ² Virology Program, Department of Molecular Biology and Microbiology, Case Western Reserve University, Cleveland, OH, USA. ³ Joint Clinical Research Centre, Kampala, Uganda. ⁴ Present Address: Myles Thaler Center for AIDS and Human Retrovirus Research, Department of Microbiology, Immunology and Cancer Biology, University of Virginia, Charlottesville, VA, USA. ⁵ Laboratory of Virology and Infectious Disease, Rockefeller University, New York, USA.

Acknowledgements

This work was supported by the Case/UHC CFAR Biosafety Core (AI36219) and by research Grants awarded to EJA (NIH/NIAD AI49170).

Compliance with ethical guidelines

Competing interests

Dr. Eric J. Arts has filed a patent on the chimeric virus construction and phenotypic assay used to measure co-receptor assay. None of the other authors have competing financial interests.

Received: 13 November 2014 Accepted: 28 July 2015

Published online: 03 October 2015

References

- Cilliers T, Morris L (2002) Coreceptor usage and biological phenotypes of HIV-1 isolates. *Clin Chem Lab Med* 40:911–917
- Alkhatib G (2009) The biology of CCR5 and CXCR4. *Curr Opin HIV AIDS* 4:96–103
- Lee B, Sharron M, Montaner LJ, Weissman D, Doms RW (1999) Quantification of CD4, CCR5, and CXCR4 levels on lymphocyte subsets, dendritic cells, and differentially conditioned monocyte-derived macrophages. *Proc Natl Acad Sci USA* 96:5215–5220
- Doranz BJ, Rucker J, Yi Y, Smyth RJ, Samson M, Peiper SC et al (1996) A dual-tropic primary HIV-1 isolate that uses fusin and the beta-chemokine receptors CKR-5, CKR-3, and CKR-2b as fusion cofactors. *Cell* 85:1149–1158
- Deng H, Liu R, Ellmeier W, Choe S, Unutmaz D, Burkhart M et al (1996) Identification of a major co-receptor for primary isolates of HIV-1. *Nature (London)* 381:661–666
- Dragic T, Litwin V, Allaway GP, Martin SR, Huang Y, Nagashima KA et al (1996) HIV-1 entry into CD4+ cells is mediated by the chemokine receptor CC-CKR-5. *Nature (London)* 381:667–673
- Marcon L, Choe H, Martin KA, Farzan M, Ponath PD, Wu L et al (1997) Utilization of C–C chemokine receptor 5 by the envelope glycoproteins of a pathogenic simian immunodeficiency virus, *SIVmac239*. *J Virol* 71:2522–2527
- Kuhmann SE, Madani N, Diop OM, Platt EJ, Morvan J, Muller-Trutwin MC et al (2001) Frequent substitution polymorphisms in African green monkey CCR5 cluster at critical sites for infections by simian immunodeficiency virus *SIVagm*, implying ancient virus-host coevolution. *J Virol* 75:8449–8460
- Deng HK, Unutmaz D, Kewalramani VN, Littman DR (1997) Expression cloning of new receptors used by simian and human immunodeficiency viruses. *Nature (London)* 388:296–300
- Schuitemaker H, Koot M, Kootstra NA, Dercksen MW, de Goede RE, van Steenwijk RP et al (1992) Biological phenotype of human immunodeficiency virus type 1 clones at different stages of infection: progression of disease is associated with a shift from monocytopathic to T-cell-tropic virus population. *J Virol* 66:1354–1360
- Fredriksson R, Stalhanske P, von Gegerfelt A, Lind B, Aman P, Rassart E et al (1991) Biological characterization of infectious molecular clones derived from a human immunodeficiency virus type-1 isolate with rapid/high replicative capacity. *Virology* 181:55–61
- Karlsson A, Parsmyr K, Sandstrom E, Fenyo EM, Albert J (1994) MT-2 cell tropism as prognostic marker for disease progression in human immunodeficiency virus type 1 infection (see comments). *J Clin Microbiol* 32:364–370
- Tersmette M, de Goede RE, Al BJ, Winkel IN, Gruters RA, Cuypers HT et al (1988) Differential syncytium-inducing capacity of human immunodeficiency virus isolates: frequent detection of syncytium-inducing isolates in patients with acquired immunodeficiency syndrome (AIDS) and AIDS-related complex. *J Virol* 62:2026–2032
- Feng Y, Broder CC, Kennedy PE, Berger EA (1996) HIV-1 entry cofactor: functional cDNA cloning of a seven-transmembrane. G protein-coupled receptor. *Science* 272:872–877
- Hallenberger S, Bosch V, Angliker H, Shaw E, Klenk HD, Garten W (1992) Inhibition of furin-mediated cleavage activation of HIV-1 glycoprotein gp160. *Nature (London)* 360:358–361
- Fouchier RA, Groenink M, Kootstra NA, Tersmette M, Huisman HG, Miedema F et al (1992) Phenotype-associated sequence variation in the third variable domain of the human immunodeficiency virus type 1 gp120 molecule. *J Virol* 66:3183–3187
- Huang CC, Tang M, Zhang MY, Majeed S, Montabana E, Stanfield RL et al (2005) Structure of a V3-containing HIV-1 gp120 core. *Science* 310:1025–1028
- Lobritz MA, Ratcliff AN, Arts EJ (2010) HIV-1 entry, inhibitors, and resistance. *Viruses* 2:1069–1105
- Cho MW, Lee MK, Carney MC, Berson JF, Doms RW, Martin MA (1998) Identification of determinants on a dualtropic human immunodeficiency virus type 1 envelope glycoprotein that confer usage of CXCR4. *J Virol* 72:2509–2515
- Nabatov AA, Pollakis G, Linnemann T, Kliphuis A, Chalaby MI, Paxton WA (2004) Inpatient alterations in the human immunodeficiency virus type 1 gp120 V1V2 and V3 regions differentially modulate coreceptor usage, virus inhibition by CC/CXC chemokines, soluble CD4, and the b12 and 2G12 monoclonal antibodies. *J Virol* 78:524–530
- Cornelissen M, Hogervorst E, Zorgrader F, Hartman S, Goudsmit J (1995) Maintenance of syncytium-inducing phenotype of HIV type 1 is associated with positively charged residues in the HIV type 1 gp120 V2 domain without fixed positions, elongation, or relocated N-linked glycosylation sites. *AIDS Res Hum Retroviruses* 11:1169–1175
- Moore JP, Stevenson M (2000) New targets for inhibitors of HIV-1 replication. *Nat Rev Mol Cell Biol* 1:40–49
- Doms RW, Moore JP (2000) HIV-1 membrane fusion: targets of opportunity. *J Cell Biol* 151:F9–F14
- Garrido C, Roulet V, Chueca N, Poveda E, Aguilera A, Skrabal K et al (2008) Evaluation of eight different bioinformatics tools to predict viral tropism in different human immunodeficiency virus type 1 subtypes. *J Clin Microbiol* 46:887–891
- Lengauer T, Sander O, Sierra S, Thielen A, Kaiser R (2007) Bioinformatics prediction of HIV coreceptor usage. *Nat Biotechnol* 25:1407–1410
- Bunnik EM, Swenson LC, Edo-Matas D, Huang W, Dong W, Frantzell A et al (2011) Detection of inferred. *PLoS Pathog* 7:e1002106
- Lin NH, Becerril C, Giguel F, Novitsky V, Moyo S, Makhema J et al (2012) Env sequence determinants in CXCR4-using human immunodeficiency virus type-1 subtype C. *Virology* 433:296–307
- Penn ML, Grivel JC, Schramm B, Goldsmith MA, Margolis L (1999) CXCR4 utilization is sufficient to trigger CD4+ T cell depletion in HIV-1-infected human lymphoid tissue. *Proc Natl Acad Sci USA* 96:663–668
- Regoes RR, Bonhoeffer S (2005) The HIV coreceptor switch: a population dynamical perspective. *Trends Microbiol* 13:269–277
- Scarlatti G, Tresoldi E, Bjorndal A, Fredriksson R, Colognesi C, Deng HK et al (1997) In vivo evolution of HIV-1 co-receptor usage and sensitivity to chemokine-mediated suppression. *Nat Med* 3:1259–1265
- Connor RI, Sheridan KE, Ceradini D, Choe S, Landau NR (1997) Change in coreceptor use correlates with disease progression in HIV-1-infected individuals. *J Exp Med* 185:621–628
- Cayota A, Vuillier F, Scott-Algara D, Dighiero G (1990) Preferential replication of HIV-1 in memory CD4+ subpopulation. *Lancet* 336:941
- Riley JL, Levine BL, Craighead N, Francomano T, Kim D, Carroll RG et al (1998) Naive and memory CD4 T cells differ in their susceptibilities to human immunodeficiency virus type 1 infection following CD28 costimulation: implications for transmission and pathogenesis. *J Virol* 72:8273–8280
- Cornelissen M, Mulder-Kampinga G, Veenstra J, Zorgrader F, Kuiken C, Hartman S et al (1995) Syncytium-inducing (SI) phenotype suppression at seroconversion after intramuscular inoculation of a non-syncytium-inducing/SI phenotypically mixed human immunodeficiency virus population. *J Virol* 69:1810–1818
- Groenink M, Moore JP, Broersen S, Schuitemaker H (1995) Equal levels of gp120 retention and neutralization resistance of phenotypically distinct primary human immunodeficiency virus type 1 variants upon soluble CD4 treatment. *J Virol* 69:523–527
- Tersmette M, Miedema F (1990) Interactions between HIV and the host immune system in the pathogenesis of AIDS. *AIDS* 4(Suppl 1):S57–S66

37. Trkola A, Ketas T, Kewalramani VN, Endorf F, Binley JM, Katinger H et al (1998) Neutralization sensitivity of human immunodeficiency virus type 1 primary isolates to antibodies and CD4-based reagents is independent of coreceptor usage. *J Virol* 72:1876–1885
38. Ball SC, Abraha A, Collins KR, Marozsan AJ, Baird H, Quinones-Mateu ME et al (2003) Comparing the ex vivo fitness of CCR5-tropic human immunodeficiency virus type 1 isolates of subtypes B and C 1. *J Virol* 77:1021–1038
39. Arien KK, Abraha A, Quinones-Mateu ME, Kestens L, Vanham G, Arts EJ (2005) The replicative fitness of primary human immunodeficiency virus type 1 (HIV-1) group M, HIV-1 group O, and HIV-2 isolates. *J Virol* 79:8979–8990
40. Abraha A, Nankya IL, Gibson R, Demers K, Tebit DM, Johnston E, Katzenstein D, Siddiqui A, Herrera C, Fischetti L, Shattock RJ, Arts EJ (2009) CCR5- and CXCR4-tropic subtype C human immunodeficiency virus type 1 isolates have a lower level of pathogenic fitness than other dominant group M subtypes: implications for the epidemic. *J Virol* 83(11):5592–5605. doi:10.1128/JVI.02051-08
41. Quinones-Mateu ME, Ball SC, Marozsan AJ, Torre VS, Albright JL, Vanham G et al (2000) A dual infection/competition assay shows a correlation between ex vivo human immunodeficiency virus type 1 fitness and disease progression. *J Virol* 74:9222–9233
42. Roche M, Jakobsen MR, Ellett A, Salimiseyadab H, Jubbs B, Westby M et al (2011) HIV-1 predisposed to acquiring resistance to maraviroc (MVC) and other CCR5 antagonists in vitro has an inherent, low-level ability to utilize MVC-bound CCR5 for entry. *Retrovirology* 8:89
43. Roche M, Salimi H, Duncan R, Wilkinson BL, Chikere K, Moore MS et al (2013) A common mechanism of clinical HIV-1 resistance to the CCR5 antagonist maraviroc despite divergent resistance levels and lack of common gp120 resistance mutations. *Retrovirology* 10:43
44. Ratcliff AN, Shi W, Arts EJ (2013) HIV-1 resistance to maraviroc conferred by a CD4 binding site mutation in the envelope glycoprotein gp120. *J Virol* 87:923–934
45. Westby M, Smith-Burchnell C, Mori J, Lewis M, Mosley M, Stockdale M et al (2007) Reduced maximal inhibition in phenotypic susceptibility assays indicates that viral strains resistant to the CCR5 antagonist maraviroc utilize inhibitor-bound receptor for entry. *J Virol* 81:2359–2371
46. Johnston ER, Zijenah LS, Mutetwa S, Kantor R, Kittinunvorakoon C, Katzenstein DA (2003) High frequency of syncytium-inducing and CXCR4-tropic viruses among human immunodeficiency virus type 1 subtype C-infected patients receiving antiretroviral treatment. *J Virol* 77:7682–7688
47. Dudley DM, Gao Y, Nelson KN, Henry KR, Nankya I, Gibson RM et al (2009) A novel yeast-based recombination method to clone and propagate diverse HIV-1 isolates. *Biotechniques* 46:458–467
48. Weber J, Vazquez AC, Winner D, Gibson RM, Rhea AM, Rose JD et al (2013) Sensitive cell-based assay for determination of human immunodeficiency virus type 1 coreceptor tropism. *J Clin Microbiol* 51:1517–1527
49. Marozsan AJ, Moore DM, Lobritz MA, Fraundorf E, Abraha A, Reeves JD et al (2005) Differences in the fitness of two diverse wild-type human immunodeficiency virus type 1 isolates are related to the efficiency of cell binding and entry. *J Virol* 79:7121–7134
50. Dorr P, Westby M, Dobbs S, Griffin P, Irvine B, Macartney M et al (2005) Maraviroc (UK-427,857), a potent, orally bioavailable, and selective small-molecule inhibitor of chemokine receptor CCR5 with broad-spectrum anti-human immunodeficiency virus type 1 activity. *Antimicrob Agents Chemother* 49:4721–4732
51. Fatkenheuer G, Pozniak AL, Johnson MA, Plettenberg A, Staszewski S, Hoepelman AI et al (2005) Efficacy of short-term monotherapy with maraviroc, a new CCR5 antagonist, in patients infected with HIV-1. *Nat Med* 11:1170–1172
52. Donzella GA, Schols D, Lin SW, Este JA, Nagashima KA, Maddon PJ et al (1998) AMD3100, a small molecule inhibitor of HIV-1 entry via the CXCR4 co-receptor. *Nat Med* 4:72–77
53. Blanco J, Barretina J, Henson G, Bridger G, De Clercq E, Clotet B et al (2000) The CXCR4 antagonist AMD3100 efficiently inhibits cell-surface-expressed human immunodeficiency virus type 1 envelope-induced apoptosis. *Antimicrob Agents Chemother* 44:51–56
54. Jensen MA, Li FS, t Wout AB, Nickle DC, Shriner D, He HX et al (2003) Improved coreceptor usage prediction and genotypic monitoring of R5-to-X4 transition by motif analysis of human immunodeficiency virus type 1 env V3 loop sequences. *J Virol* 77:13376–13388
55. Cashin K, Gray LR, Jakobsen MR, Sterjovski J, Churchill MJ, Gorry PR (2013) CoRSeqV3-C: a novel HIV-1 subtype C specific V3 sequence based coreceptor usage prediction algorithm. *Retrovirology* 10:24
56. Pugach P, Marozsan AJ, Ketas TJ, Landes EL, Moore JP, Kuhmann SE (2007) HIV-1 clones resistant to a small molecule CCR5 inhibitor use the inhibitor-bound form of CCR5 for entry. *Virology* 361:212–228
57. Troyer RM, Collins KR, Abraha A, Fraundorf E, Moore DM, Krizan RW et al (2005) Changes in human immunodeficiency virus type 1 fitness and genetic diversity during disease progression. *J Virol* 79:9006–9018
58. Ping LH, Nelson JA, Hoffman IF, Schock J, Lamers SL, Goodman M et al (1999) Characterization of V3 sequence heterogeneity in subtype C human immunodeficiency virus type 1 isolates from Malawi: underrepresentation of X4 variants. *J Virol* 73:6271–6281
59. Kaleebu P, Nankya IL, Yirrell DL, Shafer LA, Kyosiimire-Lugemwa J, Lule DB et al (2007) Relation between chemokine receptor use, disease stage, and HIV-1 subtypes A and D: results from a rural Ugandan cohort. *J Acquir Immune Defic Syndr* 45:28–33
60. Huang W, Eshleman SH, Toma J, Fransen S, Stawiski E, Paxinos EE et al (2007) Coreceptor tropism in human immunodeficiency virus type 1 subtype D: high prevalence of CXCR4 tropism and heterogeneous composition of viral populations. *J Virol* 81:7885–7893
61. Johnston SH, Lobritz MA, Nguyen S, Lassen K, Delair S, Posta F et al (2009) A quantitative affinity-profiling system that reveals distinct CD4/CCR5 usage patterns among human immunodeficiency virus type 1 and simian immunodeficiency virus strains. *J Virol* 83:11016–11026
62. Westby M, Lewis M, Whitcomb J, Youle M, Pozniak AL, James IT et al (2006) Emergence of CXCR4-using human immunodeficiency virus type 1 (HIV-1) variants in a minority of HIV-1-infected patients following treatment with the CCR5 antagonist maraviroc is from a pretreatment CXCR4-using virus reservoir. *J Virol* 80:4909–4920
63. Vandekerckhove L, Verhofstede C, Demecheleer E, De WS, Florence E, Fransen K et al (2011) Comparison of phenotypic and genotypic tropism determination in triple-class-experienced HIV patients eligible for maraviroc treatment. *J Antimicrob Chemother* 66:265–272
64. Marozsan AJ, Fraundorf E, Abraha A, Baird H, Moore D, Troyer R et al (2004) Relationships between infectious titer, capsid protein levels, and reverse transcriptase activities of diverse human immunodeficiency virus type 1 isolates. *J Virol* 78:11130–11141
65. van't Wout AB, Blaak H, Ran LJ, Brouwer M, Kuiken C, Schuitemaker H (1998) Evolution of syncytium-inducing and non-syncytium-inducing biological virus clones in relation to replication kinetics during the course of human immunodeficiency virus type 1 infection. *J Virol* 72:5099–5107
66. Troyer RM, McNevin J, Liu Y, Zhang SC, Krizan RW, Abraha A et al (2009) Variable fitness impact of HIV-1 escape mutations to cytotoxic T lymphocyte (CTL) response. *PLoS Pathog* 5:e1000365
67. Singh A, Collman RG (2000) Heterogeneous spectrum of coreceptor usage among variants within a dualtropic human immunodeficiency virus type 1 primary-isolate quasispecies. *J Virol* 74:10229–10235
68. Yi Y, Shaheen F, Collman RG (2005) Preferential use of CXCR4 by R5X4 human immunodeficiency virus type 1 isolates for infection of primary lymphocytes. *J Virol* 79:1480–1486
69. Shankarappa R, Margolick JB, Gange SJ, Rodrigo AG, Upchurch D, Farzadegan H et al (1999) Consistent viral evolutionary changes associated with the progression of human immunodeficiency virus type 1 infection. *J Virol* 73:10489–10502
70. Shankarappa R, Gupta P, Learn GH Jr, Rodrigo AG, Rinaldo CR Jr, Gorry MC et al (1998) Evolution of human immunodeficiency virus type 1 envelope sequences in infected individuals with differing disease progression profiles. *Virology* 241:251–259
71. Stalmeijer EH, van Rij RP, Boeser-Nunnink B, Visser JA, Naarding MA, Schols D et al (2004) In vivo evolution of X4 human immunodeficiency virus type 1 variants in the natural course of infection coincides with decreasing sensitivity to CXCR4 antagonists. *J Virol* 78:2722–2728
72. Archer J, Rambaut A, Taillon BE, Harrigan PR, Lewis M, Robertson DL (2010) The evolutionary analysis of emerging low frequency HIV-1 CXCR4 using variants through time—an ultra-deep approach. *PLoS Comput Biol* 6:e1001022
73. Pastore C, Ramos A, Mosier DE (2004) Intrinsic obstacles to human immunodeficiency virus type 1 coreceptor switching. *J Virol* 78:7565–7574

74. Tersmette M, Gruters RA, de Wolf F, de Goede RE, Lange JM, Schellekens PT et al (1989) Evidence for a role of virulent human immunodeficiency virus (HIV) variants in the pathogenesis of acquired immunodeficiency syndrome: studies on sequential HIV isolates. *J Virol* 63:2118–2125
75. Peeters M, Vincent R, Perret JL, Lasky M, Patrel D, Liegeois F et al (1999) Evidence for differences in MT2 cell tropism according to genetic subtypes of HIV-1: syncytium-inducing variants seem rare among subtype C HIV-1 viruses. *J Acquir Immune Defic Syndr Hum Retrovirol* 20:115–121
76. Lassen KG, Lobritz MA, Bailey JR, Johnston S, Nguyen S, Lee B et al (2009) Elite suppressor-derived HIV-1 envelope glycoproteins exhibit reduced entry efficiency and kinetics. *PLoS Pathog* 5:e1000377
77. Blaak H, Brouwer M, Ran LJ, de Wolf F, Schuitemaker H (1998) In vitro replication kinetics of human immunodeficiency virus type 1 (HIV-1) variants in relation to virus load in long-term survivors of HIV-1 infection. *J Infect Dis* 177:600–610
78. Blaak H, van't Wout AB, Brouwer M, Hooibrink B, Hovenkamp E, Schuitemaker H (2000) In vivo HIV-1 infection of CD45RA(+)CD4(+) T cells is established primarily by syncytium-inducing variants and correlates with the rate of CD4(+) T cell decline. *Proc Natl Acad Sci USA* 97:1269–1274
79. Reed LJ, Muench H (1938) A simple method of estimating fifty percent endpoints. *Am J Hyg* 27:493–497
80. Lalonde MS, Lobritz MA, Ratcliff A, Chamanian M, Athanassiou Z, Tyagi M et al (2011) Inhibition of both HIV-1 reverse transcription and gene expression by a cyclic peptide that binds the Tat-transactivating response element (TAR) RNA. *PLoS Pathog* 7:e10002038
81. Marozsan AJ, Arts EJ (2003) Development of a yeast-based recombination cloning/system for the analysis of gene products from diverse human immunodeficiency virus type 1 isolates. *J Virol Methods* 111:111–120
82. Moore DM, Arts EJ, Gao Y, Marozsan AJ (2005) A yeast recombination-based cloning system to produce chimeric HIV-1 viruses and express HIV-1 genes. In: Tuofu Z (ed) *Human retrovirus protocols: virology and molecular biology*. Humana Press, Totowa, pp 369–386
83. Thompson JD, Gibson TJ, Plewniak F, Jeanmougin F, Higgins DG (1997) The CLUSTAL_X windows interface: flexible strategies for multiple sequence alignment aided by quality analysis tools. *Nucleic Acids Res* 25:4876–4882
84. Edgar RC (2004) MUSCLE: a multiple sequence alignment method with reduced time and space complexity. *BMC Bioinformatics* 5:113
85. Edgar RC (2004) MUSCLE: multiple sequence alignment with high accuracy and high throughput. *Nucleic Acids Res* 32:1792–1797
86. Page RD (1996) TreeView: an application to display phylogenetic trees on personal computers. *Comput Appl Biosci* 12:357–358
87. Torre VS, Marozsan AJ, Albright JL, Collins KR, Hartley O, Offord RE, Quiñones-Mateu ME, Arts EJ (2000) Variable sensitivity of CCR5-tropic human immunodeficiency virus type 1 isolates to inhibition by RANTES analogs. *J Virol* 74(10):4868–4876

Submit your next manuscript to BioMed Central and take full advantage of:

- Convenient online submission
- Thorough peer review
- No space constraints or color figure charges
- Immediate publication on acceptance
- Inclusion in PubMed, CAS, Scopus and Google Scholar
- Research which is freely available for redistribution

Submit your manuscript at
www.biomedcentral.com/submit

