

## Original Article



# Aspirin Use Is Associated With Improved Outcomes in Inflammatory Breast Cancer Patients

Christopher Johns <sup>1</sup>, Allen Yen <sup>1</sup>, Asal Rahimi <sup>1</sup>, Yu-Lun Liu <sup>2</sup>, Ann Marilyn Leitch <sup>3</sup>, Ann Spangler <sup>1</sup>, Prasanna Alluri <sup>1</sup>, Chika Nwachukwu <sup>1</sup>, Rachel Wooldridge <sup>3</sup>, Deborah Farr <sup>3</sup>, D. W. Nathan Kim <sup>1</sup>

<sup>1</sup>Department of Radiation Oncology, University of Texas Southwestern Medical Center, Dallas, USA

<sup>2</sup>Department of Population and Data Sciences, University of Texas Southwestern Medical Center, Dallas, USA

<sup>3</sup>Department of Surgical Oncology, University of Texas Southwestern Medical Center, Dallas, USA



Received: Jun 14, 2022

Revised: Nov 29, 2022

Accepted: Dec 13, 2022

Published online: Jan 25, 2023

### Correspondence to

D. W. Nathan Kim

Department of Radiation Oncology, University of Texas Southwestern Medical Center, 2280 Inwood Road, Dallas, TX 75390-9303, USA.  
Email: dongnathan@gmail.com

© 2023 Korean Breast Cancer Society

This is an Open Access article distributed under the terms of the Creative Commons Attribution Non-Commercial License (<https://creativecommons.org/licenses/by-nc/4.0/>) which permits unrestricted non-commercial use, distribution, and reproduction in any medium, provided the original work is properly cited.

### ORCID iDs

Christopher Johns

<https://orcid.org/0000-0001-7589-7279>

Allen Yen

<https://orcid.org/0000-0002-8323-8617>

Asal Rahimi

<https://orcid.org/0000-0002-2762-5049>

Yu-Lun Liu

<https://orcid.org/0000-0003-3541-1814>

Ann Marilyn Leitch

<https://orcid.org/0000-0001-6959-0078>

Ann Spangler

<https://orcid.org/0000-0002-0982-1855>

Prasanna Alluri

<https://orcid.org/0000-0001-7517-9525>

Chika Nwachukwu

<https://orcid.org/0000-0001-9732-9352>

<https://ejbc.kr>

## ABSTRACT

**Purpose:** Inflammatory breast cancer (IBC) is the most aggressive form of breast cancer and has a high propensity for distant metastases. Our previous data suggested that aspirin (acetylsalicylic acid, ASA) use may be associated with reduced risk of distant metastases in aggressive breast cancer; however, there are no reported studies on the potential benefit of ASA use in patients with IBC.

**Methods:** Data from patients with non-metastatic IBC treated between 2000–2017 at two institutions, were reviewed. Overall survival (OS), disease-free survival (DFS), and distant metastasis-free survival (DMFS) were performed using Kaplan-Meier analysis. Univariate and multivariable logistic regression models were used to identify significant associated factors.


**Results:** Of 59 patients meeting the criteria for analysis and available for review, 14 ASA users were identified. ASA users demonstrated increased OS ( $p = 0.03$ ) and DMFS ( $p = 0.02$ ), with 5-year OS and DMFS of 92% ( $p = 0.01$ ) and 85% ( $p = 0.01$ ) compared to 51% and 43%, respectively, for non-ASA users. In univariate analysis, pT stage, pN stage, and ASA use were significantly correlated ( $p < 0.05$ ) with OS and DFS. On multivariable analysis, ASA use (hazard ratio [HR], 0.11; 95% confidence interval [CI], 0.01–0.8) and lymph node stage (HR, 5.9; 95% CI, 1.4–25.9) remained significant for OS and DFS. ASA use (HR, 0.13; 95% CI, 0.03–0.56) and lymph node stage (HR, 5.6; 95% CI, 1.9–16.4).

**Conclusion:** ASA use during remission was associated with significantly improved OS and DMFS in patients with IBC. These results suggest that ASA may provide survival benefits to patients with IBC. Prospective clinical trials of ASA use in patients with high-risk IBC in remission should be considered.

**Keywords:** Aspirin; Inflammatory Breast Neoplasms; Neoplasm Metastasis; Survival

## INTRODUCTION

It was estimated that there would be 281,550 new cases of female breast cancer (BC) in the United States in the year 2021; additionally, it was estimated that there would be 43,600 deaths in women with BC [1]. In 2017, when incidence data were analyzed, BC was the

Rachel Wooldridge <https://orcid.org/0000-0003-4840-2829>Deborah Farr <https://orcid.org/0000-0003-0571-3811>D. W. Nathan Kim <https://orcid.org/0000-0002-4450-3318>**Conflict of Interest**

The authors declare that they have no competing interests.

**Author Contributions**

Conceptualization: Johns C, Yen A, Wooldridge R, Kim DN; Data curation: Johns C, Yen A, Rahimi A, Liu YL, Leitch AM, Spangler A, Alluri P, Nwachukwu C, Farr D, Kim DN; Formal analysis: Johns C, Liu YL, Kim DN; Investigation: Johns C, Yen A, Liu YL; Methodology: Yen A, Kim DN; Project administration: Kim DN; Supervision: Rahimi A, Leitch AM, Spangler A, Alluri P, Nwachukwu C, Wooldridge R, Farr D, Kim DN; Validation: Rahimi A, Liu YL, Spangler A, Alluri P, Nwachukwu C, Wooldridge R, Farr D, Kim DN; Writing - original draft: Johns C, Kim DN; Writing - review & editing: Johns C, Yen A, Rahimi A, Liu YL, Leitch AM, Spangler A, Alluri P, Nwachukwu C, Wooldridge R, Farr D, Kim DN.

leading new cancer diagnosis in females, more than twice as frequently as the second leading diagnosis, cancer of the lung and bronchus [1]. Of all BCs, inflammatory breast cancer (IBC) is estimated to make up 1%–5% [2]. Although somewhat rare, IBC, which is one of the more aggressive types of BC, tends to occur in younger women, and grows and spreads rapidly [3]. IBC is typically first diagnosed at a locally advanced stage (stage III), and one-third of patients with IBC have distant metastases at the time of diagnosis [4].

For patients with stage III disease, the 5-year survival rate was 56%. If the cancer has spread to a distant part of the body (one-third of those diagnosed), the 5-year survival rate is reduced to 19% [5,6]. This is a significantly worse outcome compared to other locally advanced or metastatic BC patients, with 5-year survival rates of 86% and 28% respectively [5].

As expected, metastasis accounts for the majority of BC [7]. As a result, significant efforts have been made to develop new therapeutic approaches for the treatment and prevention of metastases.

It is widely known that the coagulation system is activated in most cancer patients [8]. The role of this system in tumor progression has been an area of ongoing research for several years. Thus far, evidence has suggested that the body's hemostatic system is involved in multiple stages of tumor progression, including proliferation, angiogenesis, metastasis, and modulation of innate immune responses [9-13]. Further research suggests that platelets play a crucial and supportive role in metastasis [14-16]. One can postulate that platelet inhibition may interfere with tumor metastasis, and several studies have suggested such a relationship [16] via both COX and non-COX mechanisms [17-20].

Additionally, several preclinical and clinical studies have evaluated the benefits of antiplatelet therapy, specifically aspirin (acetylsalicylic acid, ASA). ASA use has been found to be associated with improved outcomes and risk of distant metastasis in prostate [21,22], colon [23], and BCs [24-31]. Furthermore, results from a large multicenter prospective trial of ASA use in high-risk BC in the United States are soon to be reported, but official findings are not yet available [32]. Prospective trials are ongoing in other countries [33]. Unfortunately, no trial has focused exclusively on patients with IBC.

Based on reports from our institution and others, we hypothesized that ASA use in patients with IBC will also reduce distant metastases and improve overall survival (OS). In our study, we set out to determine whether patients with IBC, taking ASA in the remission period (beginning within 2 years of diagnosis and lasting for a minimum of 60 days) and at high risk for distant metastasis would have improved outcomes compared to non-ASA users.

## METHODS

### Study populations

The Institutional Review Board (IRB) approved the registry protocol (STU 052012-019) at University of Texas Southwestern (UTSW) Medical Center which permitted this study. A retrospective review of all patients diagnosed with and treated for non-metastatic IBC at UTSW and Parkland Medical Centers between 2000–2017 was performed.

To confirm the IBC diagnosis, all patients included in the analysis had cT4d stage disease at presentation or recurrence (or documentation of characteristics of the inflammatory stage), determined by individual chart review and confirmed by positive identification based on their clinical documentation from all available and searchable medical records [3]. Patients who did not respond to treatment and who had actively progressing cancer were excluded. Only patients who had no evidence or progression of disease on imaging and clinical evaluation between the end of therapy and the first follow-up period were considered to be in remission and were analyzed. Charts were reviewed and data were recorded for each patient's age, race, staging, tumor markers, type of surgery, chemotherapy use, radiation therapy use, medication information including ASA use, and other pertinent clinical data. HER2 positivity was defined as immunohistochemistry (IHC) 3+ or IHC 2+ with concurrent fluorescence in situ hybridization amplification of HER2. Estrogen receptor and progesterone receptor (PR) were considered positive with any IHC staining (e.g., 1%–100%). All patients were staged according to the American Joint Committee on Cancer (AJCC) 7th edition guideline. Disease-free survival (DFS), distant metastasis-free survival (DMFS), and OS were determined based on the time from the completion of the final therapy, excluding hormone therapy (e.g., end radiation, chemotherapy, or surgery). OS was measured as the time from the last day of treatment to death or last follow-up, and DFS was calculated from the last day of treatment to the confirmation of recurrent disease in the ipsilateral breast, regional, or distant site (for DMFS). For patients who remained alive and recurrence-free, data were censored on the date of the last follow-up [26].

ASA use was the independent variable of interest. Patients were assigned to the ASA group if more than 60 days of ASA use was found in their medical records between the date of their diagnosis and two years thereafter. Those who used ASA prior to diagnosis and those who started more than two years after diagnosis were not included, and were placed in the reference group.

The criteria for ASA use for 60 days were made to identify patients consistently using ASA and omit those taking it intermittently. Additionally, two years following diagnosis was the time allowed to begin ASA use to provide adequate time for patients to start, but not too much time, since this would introduce a confounding variable given the aggressiveness of IBC.

### Statistical analysis

Comparisons between the ASA and reference groups were made using the  $\chi^2$  test or Fisher's exact test for categorical variables, and the *t*-test for continuous variables. Kaplan–Meier survival curves for OS, DFS, and DMFS were compared using log-rank tests. Univariate analysis was performed using the Cox proportional hazards regression model with accepted major prognostic factors including age, race, T-stage, N-stage, lymphovascular invasion, Ki-67, and ASA use. Multivariable Cox proportional hazards regression analyses were conducted in a stepwise fashion using the backward selection approach, in which candidate variables with  $p < 0.10$  on univariate analyses were included in the initial multivariable models. The assumption of proportionality was evaluated and was met for all variables in the Cox regression analysis. The starting point of data collection was the date of treatment completion. Data were censored for patients who were alive and recurrence-free at the last follow-up. Data were analyzed using R version 4.1.0 (R Foundation for Statistical Computing, Vienna, Austria). All statistical tests were 2-sided and significant was set at  $p < 0.05$ .

## RESULTS

### Patient characteristics

The clinical and pathological characteristics of the 59 patients with IBC are described and shown (Table 1). A total of 45 patients did not meet the ASA criteria and were included in the control group. Fourteen patients met the ASA criteria and were included in the ASA group. Of the 14 ASA users, the median time that ASA use was started after diagnosis was 450 days (range, 20–625 days). Of the 14 patients who were ASA users, information on the reason for use was available for nine patients. Five patients were on ASA for cardiovascular issues, three for cerebrovascular issues, one for arthritis and five were unknown. The most common dose was 81 mg, although three patients received 325 mg. The duration of ASA use varied, ranging from a few months to many years. Six ASA users were administered ASA for cardiovascular diseases. ASA has been shown to prolong survival in cardiovascular disease; however, the presence of cardiovascular disease among some ASA users was not thought to be a confounding factor that would improve survival.

**Table 1.** Patient and tumor characteristics

Variables	Aspirin use after diagnosis		p-value
	Yes (n = 14)	No (n = 45)	
Age at diagnosis (yr)	50.5 ± 14.9	53.2 ± 11	0.541
Race			0.881
Black	4 (28.6)	9 (20.0)	
White	6 (42.9)	23 (51.1)	
Hispanic	3 (21.4)	8 (17.8)	
Asian	1 (7.1)	5 (11.1)	
Race (dichotomous)			0.485
Black	4 (28.6)	9 (20.0)	
Non-Black	10 (71.4)	36 (80.0)	
BMI	33.1 ± 8.4	29.6 ± 7	0.172
Alcohol history			0.082
Current	7 (53.8)	10 (23.8)	
Never	6 (46.2)	32 (76.2)	
Tobacco history			0.512
Current	2 (15.4)	4 (9.5)	
Never	8 (61.5)	32 (76.2)	
Past	3 (23.1)	6 (14.3)	
ER			1.000
Positive	7 (50.0)	20 (45.5)	
Negative	7 (50.0)	24 (54.5)	
PR			0.593
Positive	7 (50.0)	17 (38.6)	
Negative	7 (50.0)	27 (61.4)	
Her2 IHC (dichotomous)*			0.300
Negative	7 (58.3)	32 (74.4)	
Positive	5 (41.7)	11 (25.6)	
Triple negative			0.480
Yes	2 (14.3)	12 (27.3)	
No	12 (85.7)	32 (72.7)	
Ki-67 > 35%			0.345
Yes	8 (57.1)	32 (71.1)	
No	6 (42.9)	13 (28.9)	
LVI (biopsy)			0.254
Yes	5 (50.0)	21 (72.4)	
No	5 (50.0)	8 (27.6)	

(continued to the next page)

**Table 1.** (Continued) Patient and tumor characteristics

Variables	Aspirin use after diagnosis		
	Yes (n = 14)	No (n = 45)	p-value
cT stage			N/A
T4d	13 (100.0)	39 (100.0)	
cN stage			0.839
NO	0 (0.0)	3 (7.8)	
N1	10 (83.4)	22 (56.4)	
N2	1 (8.3)	7 (17.9)	
N3	1 (8.3)	7 (17.9)	
cN stage (dichotomous)			1.000
NO	0 (0.0)	3 (7.7)	
N1/N2/N3	12 (100.0)	36 (92.3)	
Stage (Clinical)			1.000
IIIB	13 (92.9)	36 (87.8)	
IIIC	1 (7.1)	5 (12.2)	
pT stage (dichotomous)			1.000
T0/Tis	4 (30.8)	15 (35.7)	
T1/T2/T3/T4	9 (69.2)	27 (64.3)	
pN stage			0.727
NO	5 (38.5)	16 (38.1)	
N1	4 (30.7)	8 (19.0)	
N2	3 (23.1)	10 (23.9)	
N3	1 (7.7)	8 (19.0)	
pN stage (dichotomous)			1.000
NO	5 (38.5)	16 (38.1)	
N1/N2/N3	8 (61.5)	26 (61.9)	
Complete response			0.497
CR (pT0/pTis and pN0)	3 (23.1)	13 (37.1)	
Non-CR (others)	10 (76.9)	22 (62.9)	
Chemotherapy			0.773
Neoadjuvant	10 (76.9)	29 (65.9)	
Adjuvant	1 (7.7)	3 (6.8)	
Both	2 (15.4)	12 (27.3)	
Hormones			0.183
Yes	7 (58.3)	14 (34.1)	
No	5 (41.7)	27 (65.9)	

Values are presented as mean ± standard deviation or number (%).

LVI = lymphovascular invasion; CR = complete response.

\*Her2 positive was referred to a patient with Her2 IHC 3+ and/or Her2 Fish amplified; †LN positive was referred to the number of LN greater than 0.

The median age of the control group was 53.6, and 49.0 years for the ASA group. The median (interquartile range) follow-up was 31.3 (14.9–50.5) months for the control group and 62.6 (39.7–110.5) months for the ASA group. Patient characteristics were similarly distributed between the two groups, with no statistically significant differences. Systemic therapy regimens are described and shown (**Table 2**).

### Effect of ASA use on DFS and OS

Univariate analysis was performed using known prognostic factors and ASA use to investigate the potential impact of ASA use on DFS and OS (**Table 3**). For DFS, higher pT stage ( $p = 0.022$ ), higher pN stage ( $p = 0.019$ ), and lymph node positive on biopsy (cN+) ( $p = 0.006$ ) were significantly associated with worse outcomes when evaluating typical prognostic factors. However, there was a statistically significant improvement in DFS with ASA administration ( $p = 0.017$ , **Figure 1**). In the ASA group, only two patients had recurrence (14.3%) and 26 patients (57.8%) in the control group.

**Table 2.** Systemic therapy regimens of all patients

Variables	Aspirin use after diagnosis		p-value
	Yes (n = 14)	No (n = 45)	
NA AC+Taxol	7 (24.1)	20 (23.0)	0.462
NA FEC	1 (3.4)	3 (3.4)	
NA TC	3 (10.3)	12 (13.8)	
NA Carboplatin based	0 (0.0)	3 (3.4)	
NA Other	0 (0.0)	2 (2.3)	
NA Trastuzumab+Pertuzumab	2 (6.9)	10 (11.5)	
NA Trastuzumab	3 (10.3)	2 (2.3)	
Adjuvant AC+Taxol	1 (3.4)	0 (0.0)	
Adjuvant TC	0 (0.0)	2 (2.3)	
Adjuvant Capecitabine	0 (0.0)	7 (8.0)	
Adjuvant Carboplatin based	0 (0.0)	1 (1.5)	
Adjuvant Trastuzumab	5 (17.2)	12 (13.8)	
Hormones	7 (24.1)	14 (16.1)	

Values are presented as number (%).

NA = neoadjuvant; AC = Adriamycin/cyclophosphamide; FEC = 5-fluorouracil/epirubicin/cyclophosphamide; TC = Taxotere/cyclophosphamide.

There was also a significant difference in OS according to ASA use (**Figure 1**). In the ASA group, there was only one death (7.1%), as opposed to 21 deaths in the control group (46.7%). A significant reduction in the 5-year OS rate was observed in the ASA group (92% in the ASA group vs. 51% in the control group,  $p = 0.01$ ). For OS on univariate analysis, higher pN stage ( $p = 0.011$ ) and the presence of clinically positive lymph nodes on biopsy ( $p = 0.011$ ) were significantly associated with worse outcomes, whereas ASA use ( $p = 0.027$ ) was associated with improved OS. No other prognostic factors were significantly associated with OS. From the univariate analysis, factors with  $p$ -values less than 0.1 (PR, pT stage, pN stage, LN positive on biopsy (cN+), and ASA use), were further included in the multivariable Cox regression analysis. ASA use was associated with significantly improved OS ( $p = 0.029$ ) and DFS ( $p = 0.008$ ) in the multivariable analysis (**Table 4**). Multivariable analysis also demonstrated that clinical node positive disease (positive lymph nodes on biopsy) status remained a significant risk factor associated with worse DFS ( $p = 0.001$ ) and OS ( $p = 0.007$ ) (**Table 4**). Of the 59 patients, 22 died during the study period. Nineteen of the deaths were BC-specific.

### Effect of ASA use on DMFS

Univariate analysis was performed to compare distant metastasis rates between the ASA and control groups. A significant reduction in the 5-year rate of distant metastases was found in the ASA group (85% vs. 43% in the ASA and control groups, respectively). A Kaplan-Meier DMFS curve was generated, showing this significant improvement ( $p = 0.01$ , **Figure 1**). A multivariable analysis of DMFS was not performed. A total of 25 patients had distant metastases.

## DISCUSSION

We have previously shown an association between ASA use and outcomes in cancer patients at risk for distant metastases. In 2013, and 2014 our group reported that ASA use was associated with improved OS in patients with high-risk prostate cancer [21,22] and triple-negative BC. These effects were not noted in patients with breast or prostate cancer with a lower risk of distant metastases. Similarly, improved results following regular ASA use after the diagnosis of colorectal cancer have also been reported [23]. Additionally, in 2010, in over 4,000 women diagnosed with stage I, II, or III BC and living at least one year after BC diagnosis, ASA use was associated with a decreased risk of distant recurrence and BC death [24].

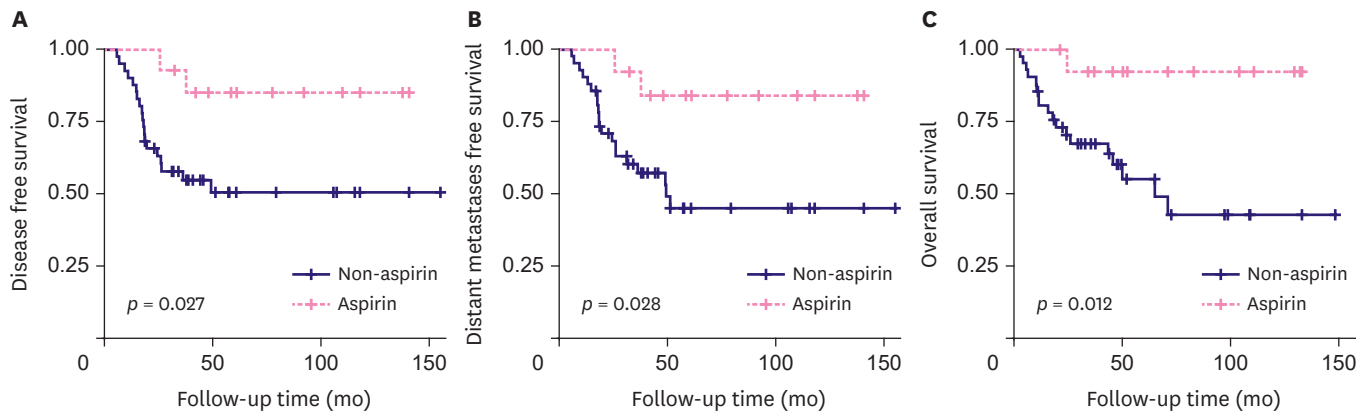
**Table 3.** Univariate analysis of major prognostic factors and aspirin use with respect to DFS and OS

Variables	DFS		OS	
	HR (95% CI)	p-value	HR (95% CI)	p-value
Age at diagnosis (yr)				
Age	1.006 (0.975–1.038)	0.715	1.007 (0.974–1.042)	0.669
Race (dichotomous)				
Non-Black	Reference	-	Reference	-
Black	0.761 (0.286–2.022)	0.584	0.731 (0.247–2.168)	0.573
BMI				
BMI	0.966 (0.916–1.019)	0.204	0.965 (0.910–1.023)	0.228
Alcohol history				
Never	Reference	-	Reference	-
Current	0.874 (0.360–2.127)	0.767	0.636 (0.231–1.754)	0.382
Tobacco history				
Never	Reference	-	Reference	-
Current	0.756 (0.174–3.277)	0.709	0.506 (0.067–3.837)	0.510
Past	1.131 (0.380–3.366)	0.825	1.126 (0.371–3.415)	0.834
ER				
Negative	Reference	-	Reference	-
Positive	1.286 (0.586–2.820)	0.531	1.671 (0.701–3.983)	0.247
PR				
Negative	Reference	-	Reference	-
Positive	1.710 (0.777–3.763)	0.182	2.159 (0.902–5.166)	0.084
Her2 (dichotomous)				
Negative	Reference	-	Reference	-
Positive	0.604 (0.224–1.632)	0.320	0.373 (0.109–1.283)	0.118
Triple negative				
No	Reference	-	Reference	-
Yes	1.137 (0.452–2.860)	0.785	1.375 (0.530–3.567)	0.512
Ki-67 > 35%				
No	Reference	-	Reference	-
Yes	0.644 (0.295–1.402)	0.267	0.637 (0.271–1.496)	0.300
LVI (biopsy)				
No	Reference	-	Reference	-
Yes	1.655 (0.526–5.206)	0.389	1.610 (0.427–6.075)	0.482
pT stage (dichotomous)				
T0/Tis	Reference	-	Reference	-
T1/T2/T3/T4	3.517 (1.200–10.310)	0.022	3.271 (0.955–11.200)	0.059
pN stage (dichotomous)				
N0	Reference	-	Reference	-
N1/N2/N3	3.267 (1.218–8.767)	0.019	6.675 (1.545–28.850)	0.011
Hormones				
No	Reference	-	Reference	-
Yes	1.142 (0.500–2.606)	0.753	1.231 (0.531–2.858)	0.628
Clinically LN positive				
No	Reference	-	Reference	-
Yes	4.531 (1.551–13.230)	0.006	6.716 (1.562–28.870)	0.011
Aspirin use after diagnosis				
No	Reference	-	Reference	-
Yes	0.171 (0.040–0.727)	0.017	0.103 (0.014–0.769)	0.027

DFS = disease free survival; OS = overall survival; HR = hazard ratio; CI = confidence interval; BMI = body mass index; ER = estrogen receptor; PR = progesterone receptor; LVI = lymphovascular invasion; LN = lymph node.

As evidence supports the role of platelets in supporting tumor growth and metastasis, research into anti-platelet agents such as ASA, including low-dose ASA, to improve the outcome of patients at high risk for distant metastases should be considered.

As early as the late 1960s, a link between cancer and platelets was noted [34], and the potential role of platelets in promoting tumor growth and metastasis has been appreciated [16,35-41]. Tumor cells have been shown to activate platelets, resulting in tumor cell-induced



**Figure 1.** The effect of aspirin use on (A) disease free survival, (B) distant metastases free survival, and (C) overall survival.

**Table 4.** Multivariate analysis of major prognostic factors and aspirin use with respect to DFS and OS

Variables	DFS		OS	
	HR (95% CI)	p-value	HR (95% CI)	p-value
cN+	6.165 (2.071-18.351)	0.001	7.697 (1.761-33.640)	0.007
Aspirin use	0.140 (0.032-0.603)	0.008	0.106 (0.014-0.797)	0.029

DFS = disease free survival; OS = overall survival; HR = hazard ratio; CI = confidence interval.

platelet aggregation [42]. This collection of platelets around tumor cells may support growth and metastasis. Following activation, through aggregation by tumor cells, and exposure to shear stress, platelets release their stored contents, including proangiogenic factors such as vascular endothelial growth factor, platelet-derived growth factor, and transforming growth factor beta-1. These factors play a significant role in angiogenesis and, ultimately, invasive tumor growth and metastasis [41-47].

Platelets can also protect tumor cells from immune destruction through a variety of ways, including protection from NK cell-mediated lysis [13,48], and transferring platelet major histocompatibility complex class I molecules to tumor cells [49], suggesting a potential role for ASA, or anti-platelet agents, in improving patients' response to immune-mediated therapies.

Although different doses of ASA are often used in the clinical setting, the main function of ASA when administered at lower doses (< 100 mg) is platelet inactivation. Given that many patients were being treated for the purpose of anti-platelet therapy, (the primary use in our patient population) [50], this also supports that the improvement of outcome with ASA use seen in our patients could be due to the contributory mechanism of limiting metastasis in aggressive BC through platelet inhibition.

In this study, we examined a very high-risk BC population, specifically those with a diagnosis of IBC. Our data showed that ASA use was associated with a reduction in distant metastasis and was further associated with improvements in OS in a BC population at a higher risk of distant metastases. Given the improvements seen in the 5-year distant metastasis rate in the ASA group, our findings offer further support for considering future studies of antiplatelet therapy, specifically ASA, as an adjunctive therapy for IBC.

Many questions remain regarding ASA use, some of which are being addressed in randomized clinical trials [32,33]. However, questions specific to the role of ASA in IBC remain, including the dosage of ASA needed in this population, duration of use, optimal timing of therapy



administration, and potential interactions with systemic therapy. Biomarkers that may further predict the selectivity of ASA is another potential future area of study.

A significant limitation of our study was the small sample size of patients, given the rare nature of the disease. Another limitation of this study is that it is retrospective, and this study has the best hypothesis generation. We hope that this and other studies will provide a basis for consideration of prospective clinical trials that include and focus on ASA use in locally advanced, non-metastatic IBC patients.

ASA administration initiated during the remission period was associated with significantly improved OS, DFS, and DMFS in patients with IBC. These results suggest that ASA use may provide survival benefits for IBC patients at risk of distant metastases. Prospective clinical trials of augmented ASA use in patients with high-risk IBC in remission should be considered for development.

## REFERENCES

1. Siegel RL, Miller KD, Fuchs HE, Jemal A. Cancer statistics, 2021. *CA Cancer J Clin* 2021;71:7-33.  
[PUBMED](#) | [CROSSREF](#)
2. Levine PH, Steinhorn SC, Ries LG, Aron JL. Inflammatory breast cancer: the experience of the surveillance, epidemiology, and end results (SEER) program. *J Natl Cancer Inst* 1985;74:291-7.  
[PUBMED](#)
3. Dawood S, Merajver SD, Viens P, Vermeulen PB, Swain SM, Buchholz TA, et al. International expert panel on inflammatory breast cancer: consensus statement for standardized diagnosis and treatment. *Ann Oncol* 2011;22:515-23.  
[PUBMED](#) | [CROSSREF](#)
4. Linhares S, Alammah T, Alghamdi HA, Möller MG. Inflammatory breast cancer in pregnancy and lactation. *Adv Exp Med Biol* 2020;1252:143-51.  
[PUBMED](#) | [CROSSREF](#)
5. Howlader N, Noone AM, Krapcho M, Miller D, Brest A, Yu M, et al. SEER Cancer Statistics Review, 1975–2017. Bethesda: National Cancer Institute; 2019.
6. American Cancer Society. Inflammatory Breast Cancer. 2022. <https://www.cancer.org/cancer/breast-cancer/about/types-of-breast-cancer/inflammatory-breast-cancer.html>. Accessed June 1st, 2022.
7. Scully OJ, Bay BH, Yip G, Yu Y. Breast cancer metastasis. *Cancer Genomics Proteomics* 2012;9:311-20.  
[PUBMED](#)
8. Nash GF, Walsh DC, Kakkar AK. The role of the coagulation system in tumour angiogenesis. *Lancet Oncol* 2001;2:608-13.  
[PUBMED](#) | [CROSSREF](#)
9. Lima LG, Monteiro RQ. Activation of blood coagulation in cancer: implications for tumour progression. *Biosci Rep* 2013;33:e00064.  
[PUBMED](#) | [CROSSREF](#)
10. Camerer E, Qazi AA, Duong DN, Cornelissen I, Advincula R, Coughlin SR. Platelets, protease-activated receptors, and fibrinogen in hematogenous metastasis. *Blood* 2004;104:397-401.  
[PUBMED](#) | [CROSSREF](#)
11. Ruf W, Disse J, Carneiro-Lobo TC, Yokota N, Schaffner F. Tissue factor and cell signalling in cancer progression and thrombosis. *J Thromb Haemost* 2011;9 Suppl 1:306-15.  
[PUBMED](#) | [CROSSREF](#)
12. Im JH, Fu W, Wang H, Bhatia SK, Hammer DA, Kowalska MA, et al. Coagulation facilitates tumor cell spreading in the pulmonary vasculature during early metastatic colony formation. *Cancer Res* 2004;64:8613-9.  
[PUBMED](#) | [CROSSREF](#)
13. Palumbo JS, Talmage KE, Massari JV, La Jeunesse CM, Flick MJ, Kombrinck KW, et al. Platelets and fibrin(ogen) increase metastatic potential by impeding natural killer cell-mediated elimination of tumor cells. *Blood* 2005;105:178-85.  
[PUBMED](#) | [CROSSREF](#)

14. Labelle M, Begum S, Hynes RO. Direct signaling between platelets and cancer cells induces an epithelial-mesenchymal-like transition and promotes metastasis. *Cancer Cell* 2011;20:576-90.  
[PUBMED](#) | [CROSSREF](#)
15. Ward Y, Lake R, Faraji F, Sperger J, Martin P, Gilliard C, et al. Platelets promote metastasis via binding tumor CD97 leading to bidirectional signaling that coordinates transendothelial migration. *Cell Reports* 2018;23:808-22.  
[PUBMED](#) | [CROSSREF](#)
16. Gay LJ, Felding-Habermann B. Contribution of platelets to tumour metastasis. *Nat Rev Cancer* 2011;11:123-34.  
[PUBMED](#) | [CROSSREF](#)
17. Lucotti S, Cerutti C, Soyer M, Gil-Bernabé AM, Gomes AL, Allen PD, et al. Aspirin blocks formation of metastatic intravascular niches by inhibiting platelet-derived COX-1/thromboxane A2. *J Clin Invest* 2019;129:1845-62.  
[PUBMED](#) | [CROSSREF](#)
18. Vallée A, Lecarpentier Y, Vallée JN. Targeting the canonical WNT/ $\beta$ -catenin pathway in cancer treatment using non-steroidal anti-inflammatory drugs. *Cells* 2019;8:726.  
[PUBMED](#) | [CROSSREF](#)
19. Lu M, Strohecker A, Chen F, Kwan T, Bosman J, Jordan VC, et al. Aspirin sensitizes cancer cells to TRAIL-induced apoptosis by reducing survivin levels. *Clin Cancer Res* 2008;14:3168-76.  
[PUBMED](#) | [CROSSREF](#)
20. Dai X, Yan J, Fu X, Pan Q, Sun D, Xu Y, et al. Aspirin inhibits cancer metastasis and angiogenesis via targeting heparanase. *Clin Cancer Res* 2017;23:6267-78.  
[PUBMED](#) | [CROSSREF](#)
21. Jacobs CD, Chun SG, Yan J, Xie XJ, Pistenmaa DA, Hannan R, et al. Aspirin improves outcome in high risk prostate cancer patients treated with radiation therapy. *Cancer Biol Ther* 2014;15:699-706.  
[PUBMED](#) | [CROSSREF](#)
22. Choe KS, Cowan JE, Chan JM, Carroll PR, D'Amico AV, Liauw SL. Aspirin use and the risk of prostate cancer mortality in men treated with prostatectomy or radiotherapy. *J Clin Oncol* 2012;30:3540-4.  
[PUBMED](#) | [CROSSREF](#)
23. Chan AT, Ogino S, Fuchs CS. Aspirin use and survival after diagnosis of colorectal cancer. *JAMA* 2009;302:649-58.  
[PUBMED](#) | [CROSSREF](#)
24. Holmes MD, Chen WY, Li L, Hertzmark E, Spiegelman D, Hankinson SE. Aspirin intake and survival after breast cancer. *J Clin Oncol* 2010;28:1467-72.  
[PUBMED](#) | [CROSSREF](#)
25. Murray LJ, Cooper JA, Hughes CM, Powe DG, Cardwell CR. Post-diagnostic prescriptions for low-dose aspirin and breast cancer-specific survival: a nested case-control study in a breast cancer cohort from the UK Clinical Practice Research Datalink. *Breast Cancer Res* 2014;16:R34.  
[PUBMED](#) | [CROSSREF](#)
26. Shiao J, Thomas KM, Rahimi AS, Rao R, Yan J, Xie XJ, et al. Aspirin/antiplatelet agent use improves disease-free survival and reduces the risk of distant metastases in Stage II and III triple-negative breast cancer patients. *Breast Cancer Res Treat* 2017;161:463-71.  
[PUBMED](#) | [CROSSREF](#)
27. Chen WY, Holmes MD. Role of aspirin in breast cancer survival. *Curr Oncol Rep* 2017;19:48.  
[PUBMED](#) | [CROSSREF](#)
28. Huang XZ, Gao P, Sun JX, Song YX, Tsai CC, Liu J, et al. Aspirin and nonsteroidal anti-inflammatory drugs after but not before diagnosis are associated with improved breast cancer survival: a meta-analysis. *Cancer Causes Control* 2015;26:589-600.  
[PUBMED](#) | [CROSSREF](#)
29. Zhong S, Zhang X, Chen L, Ma T, Tang J, Zhao J. Association between aspirin use and mortality in breast cancer patients: a meta-analysis of observational studies. *Breast Cancer Res Treat* 2015;150:199-207.  
[PUBMED](#) | [CROSSREF](#)
30. Blair CK, Sweeney C, Anderson KE, Folsom AR. NSAID use and survival after breast cancer diagnosis in post-menopausal women. *Breast Cancer Res Treat* 2007;101:191-7.  
[PUBMED](#) | [CROSSREF](#)
31. Fraser DM, Sullivan FM, Thompson AM, McCowan C. Aspirin use and survival after the diagnosis of breast cancer: a population-based cohort study. *Br J Cancer* 2014;111:623-7.  
[PUBMED](#) | [CROSSREF](#)
32. Chen WY, Winer EP, Ballman KV, Partridge AH, Carey LA, Carvan M, et al. ABC trial (A011502): a randomized phase III double-blinded placebo-controlled trial of aspirin as adjuvant therapy breast cancer. *J Clin Oncol* 2020;38 suppl:TPS600-600.  
[CROSSREF](#)

33. Coyle C, Cafferty FH, Rowley S, MacKenzie M, Berkman L, Gupta S, et al. ADD-ASPIRIN: A phase III, double-blind, placebo controlled, randomised trial assessing the effects of aspirin on disease recurrence and survival after primary therapy in common non-metastatic solid tumours. *Contemp Clin Trials* 2016;51:56-64.  
[PUBMED](#) | [CROSSREF](#)
34. Davis RB, Theologides A, Kennedy BJ. Comparative studies of blood coagulation and platelet aggregation in patients with cancer and nonmalignant diseases. *Ann Intern Med* 1969;71:67-80.  
[PUBMED](#) | [CROSSREF](#)
35. Xu XR, Zhang D, Oswald BE, Carrim N, Wang X, Hou Y, et al. Platelets are versatile cells: new discoveries in hemostasis, thrombosis, immune responses, tumor metastasis and beyond. *Crit Rev Clin Lab Sci* 2016;53:409-30.  
[PUBMED](#) | [CROSSREF](#)
36. Meikle CK, Kelly CA, Garg P, Wuescher LM, Ali RA, Worth RG. Cancer and thrombosis: the platelet perspective. *Front Cell Dev Biol* 2017;4:147.  
[PUBMED](#) | [CROSSREF](#)
37. Labelle M, Hynes RO. The initial hours of metastasis: the importance of cooperative host-tumor cell interactions during hematogenous dissemination. *Cancer Discov* 2012;2:1091-9.  
[PUBMED](#) | [CROSSREF](#)
38. Labelle M, Begum S, Hynes RO. Platelets guide the formation of early metastatic niches. *Proc Natl Acad Sci U S A* 2014;111:E3053-61.  
[PUBMED](#) | [CROSSREF](#)
39. Franco AT, Corken A, Ware J. Platelets at the interface of thrombosis, inflammation, and cancer. *Blood* 2015;126:582-8.  
[PUBMED](#) | [CROSSREF](#)
40. Leblanc R, Peyruchaud O. Metastasis: new functional implications of platelets and megakaryocytes. *Blood* 2016;128:24-31.  
[PUBMED](#) | [CROSSREF](#)
41. Li N. Platelets in cancer metastasis: To help the “villain” to do evil. *Int J Cancer* 2016;138:2078-87.  
[PUBMED](#) | [CROSSREF](#)
42. Xu XR, Yousef GM, Ni H. Cancer and platelet crosstalk: opportunities and challenges for aspirin and other antiplatelet agents. *Blood* 2018;131:1777-89.  
[PUBMED](#) | [CROSSREF](#)
43. Battinelli EM, Markens BA, Kulenthirarajan RA, Machlus KR, Flaumenhaft R, Italiano JE Jr. Anticoagulation inhibits tumor cell-mediated release of platelet angiogenic proteins and diminishes platelet angiogenic response. *Blood* 2014;123:101-12.  
[PUBMED](#) | [CROSSREF](#)
44. Möhle R, Green D, Moore MA, Nachman RL, Rafii S. Constitutive production and thrombin-induced release of vascular endothelial growth factor by human megakaryocytes and platelets. *Proc Natl Acad Sci U S A* 1997;94:663-8.  
[PUBMED](#) | [CROSSREF](#)
45. Battinelli EM, Markens BA, Italiano JE Jr. Release of angiogenesis regulatory proteins from platelet alpha granules: modulation of physiologic and pathologic angiogenesis. *Blood* 2011;118:1359-69.  
[PUBMED](#) | [CROSSREF](#)
46. Farooqi AA, Siddik ZH. Platelet-derived growth factor (PDGF) signalling in cancer: rapidly emerging signalling landscape. *Cell Biochem Funct* 2015;33:257-65.  
[PUBMED](#) | [CROSSREF](#)
47. Johnson KE, Forward JA, Tippy MD, Ceglowski JR, El-Husayni S, Kulenthirarajan R, et al. Tamoxifen directly inhibits platelet angiogenic potential and platelet-mediated metastasis. *Arterioscler Thromb Vasc Biol* 2017;37:664-74.  
[PUBMED](#) | [CROSSREF](#)
48. Nieswandt B, Hafner M, Echtenacher B, Männel DN. Lysis of tumor cells by natural killer cells in mice is impeded by platelets. *Cancer Res* 1999;59:1295-300.  
[PUBMED](#)
49. Placke T, Salih HR, Kopp HG. G1TR ligand provided by thrombopoietic cells inhibits NK cell antitumor activity. *J Immunol* 2012;189:154-60.  
[PUBMED](#) | [CROSSREF](#)
50. Patrignani P, Patrono C. Aspirin and Cancer. *J Am Coll Cardiol* 2016;68:967-76.  
[PUBMED](#) | [CROSSREF](#)