



# Topographical anatomy of the greater omentum and transverse mesocolon: a study using human fetuses

Daisuke Suzuki<sup>1</sup>, Ji Hyun Kim<sup>2</sup>, Shunichi Shibata<sup>3</sup>, Gen Murakami<sup>4</sup>, José Francisco Rodríguez-Vázquez<sup>5</sup>

<sup>1</sup>Division of Common Curriculum, Hokkaido Chitose College of Rehabilitation, Chitose, Japan, <sup>2</sup>Department of Anatomy, Jeonbuk National University Medical School, Jeonju, Korea, <sup>3</sup>Department of Maxillofacial Anatomy, Graduate School of Tokyo Medical and Dental University, Tokyo, <sup>4</sup>Division of Internal Medicine, Jikou-kai Clinic of Home Visits, Sapporo, Japan, <sup>5</sup>Department of Anatomy and Embryology, Faculty of Medicine, Complutense University, Madrid, Spain

**Abstract:** The greater omentum covers the transverse colon from the anterior side in adults, but people might believe the morphology stable once established during fetal life. Sections from 49 midterm and 17 late-stage human fetuses, of gestational ages (GA) 8–15 and 30–38 weeks, respectively, showed complete fusion between the greater omentum and transverse mesocolon after physiological herniation at GA 8–9 weeks; the transverse colon attaching to the anterior aspect of the gastric antrum and pylorus at GA 10–15 weeks; the colon pushing the pylorus or superior portion of the duodenum upward (at GA 10–15 weeks and 30–38 weeks); and the greater omentum without covering the greater portion of the jejunum and ileum but shifted leftward (at GA 30–38 weeks). These subsequent topographical variations of the transverse colon with the stomach and duodenum included the colon tightly fusing with the stomach by a fibrous tissue and; the greater omentum and/or the mesocolon wedged between the stomach and transverse colon. Therefore, in combination, the colon was partly separated from the greater omentum. Moreover, at GA 30–38 weeks, the duodenum consistently showed a horizontal loop in contrast to the usual C-loop in the frontal plane. Consequently, after a complete fusion occurred once between the greater omentum and transverse mesocolon, the topographical change of the upper abdominal viscera seemed to modify, change or even break the initial fusion of the peritoneum. A logical lamination of the peritoneum seemed not to simply connect with the surgical application.

**Key words:** Greater omentum, Transverse mesocolon, Peritoneal fusion, Topographical anatomy, Human fetuses


Received May 15, 2019; Revised June 5, 2019; Accepted June 6, 2019

## Introduction

The transverse colon in adults is located below the stomach and behind the greater omentum (Fig. 1A), with a root of the transverse mesocolon running longitudinally across the ante-

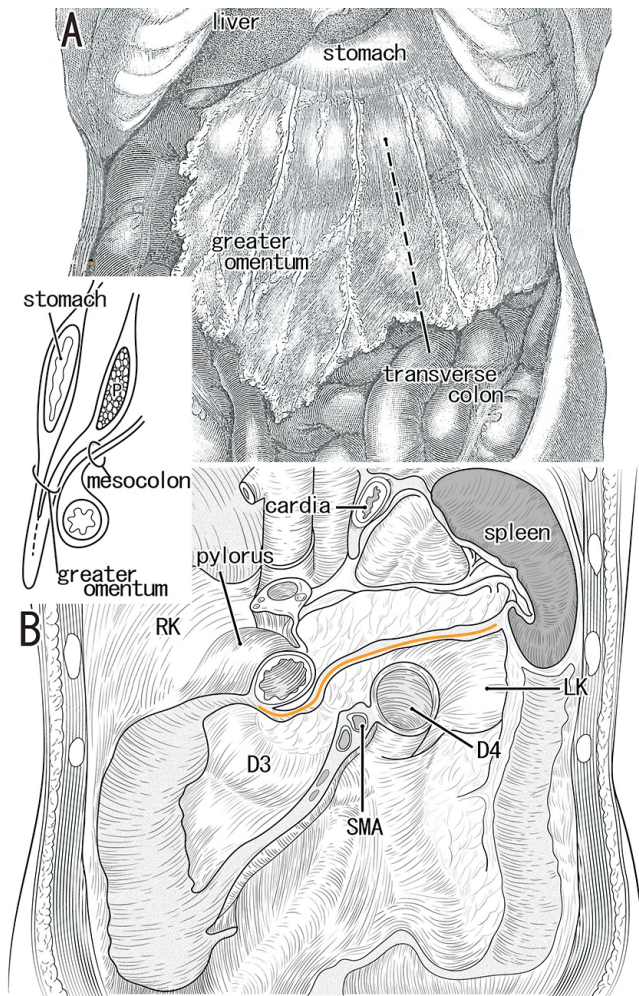
rior aspect of the pancreatic body or along the inferior margin (Fig. 1B). During embryonic gastric rotation along the longitudinal axis [1, 2], the greater omentum originates from the dorsal mesogastrium, the site of development of major parts of the pancreas. Because the omentum and transverse mesocolon are composed of double layered peritoneum, a laminar arrangement in the upper abdomen was hypothesized (Fig. 1 inset). This type of logical arrangement may be difficult to show in dissection of adult cadavers, but separation of the greater omentum from the mesocolon, or omentectomy, is regarded as a classical procedure in surgery [3]. In Japan, resection of regional lymphatics may include separation of the

### Corresponding author:

Ji Hyun Kim   
Department of Anatomy, Jeonbuk National University Medical School,  
20 Geonji-ro, Deokjin-gu, Jeonju 54907, Korea  
Tel: +82-63-270-3097, Fax: +82-63-274-9880, E-mail: 407kk@hanmail.net

Copyright © 2019. Anatomy & Cell Biology

This is an Open Access article distributed under the terms of the Creative Commons Attribution Non-Commercial License (<http://creativecommons.org/licenses/by-nc/4.0/>) which permits unrestricted non-commercial use, distribution, and reproduction in any medium, provided the original work is properly cited.



**Fig. 1.** Schematic representation of the greater omentum, duodenum and transverse colon in adults. Panel A is an anterior view showing an apron-like extension of the greater omentum. The transverse colon appears as a transparent image under the omentum. Panel B displays topographical anatomy after removal of the liver, stomach, jejunum and ileum, as well as entire parts of the colon. An attachment of the transverse mesocolon (red color) crosses the pancreas (P) longitudinally. The left and right kidneys (LK, RK) are located behind the transparent peritoneum. An insert on the left-hand side shows a logical lamination of the peritoneum. Specifically, the greater omentum, consisting of four layers, is attached to two layers of the transverse mesocolon. D3, horizontal or third portion of the duodenum; D4, ascending or fourth portion of the duodenum; SMA, superior mesenteric artery.

transverse mesocolon not only from the greater omentum but also from the omental bursa or lesser sac [4]. The ability to separate the peritoneal fusion in adults may enable demonstration of the logical peritoneal lamination in fetuses. Examination of sections from human fetuses showed histologic evidence of the fusion fascia behind the duodenopancreas, a fusion used in a routine surgical maneuver for pancreaticodu-

odenectomy (Kocher's maneuver or retropancreatic pancreaticoduodenal mobilization) [5]. That study, however, did not show macroscopic views before the preparation of histological sections.

Determining the topographical anatomy of the stomach and intestines in fetuses before, during and after physiological umbilical herniation is of major interest in embryology [6, 7]. Excellent 3D studies have demonstrated alterations in the topographical anatomy of the transverse colon [8, 9]. However, since all these studies used specimens earlier than Carnegie stage 22 or 23 (gestational age [GA] 7–8 weeks), little is known about when and how the transverse mesocolon fuses with the greater omentum. A study using serial sagittal sections without 3D reconstruction showed that the descending colon entered into the herniation sac in 16 of 27 embryos and fetuses of GA 6–9 weeks [10]. Therefore, despite the anatomy of the greater omentum and transverse mesocolon being well known, inter-individual differences likely occur. Previous macroscopic studies, however, did not include descriptions of peritoneal structures (e.g., Rigoard et al. [11]), likely because no or few studies combined gross anatomy with histological observations. This study, using sections from midterm and late-stage human fetuses (crown-rump length [CRL], 32–325 mm), was designed to demonstrate (1) the development of fusion between the greater omentum and transverse mesocolon and (2) the fetal topographical relationship between the stomach and transverse colon. During dissections of late-stage specimens for histological preparation, histologic characteristics were compared with macroscopic views.

## Materials and Methods

The study was performed in accordance with the provisions of the Declaration of Helsinki 1995 (as revised in 2013). The study included 45 midterm fetuses of CRL 32–110 mm (GA 8–15 weeks) and 17 late-stage fetuses of CRL 250–328 mm (GA 30–38 weeks). All specimens were part of the large collection kept at the Embryology Institute of the Universidad Complutense, Madrid, and originated from miscarriages and ectopic pregnancies at the Department of Obstetrics of the University. The midterm specimens had been sectioned serially, 10 sagittally and 35 horizontally; most sections were stained with hematoxylin and eosin (H&E), with others stained with Masson trichrome, azan, orange G or silver stain. In contrast, after macroscopic observations during dissection, the abdomens of the late-stage fetuses were sectioned

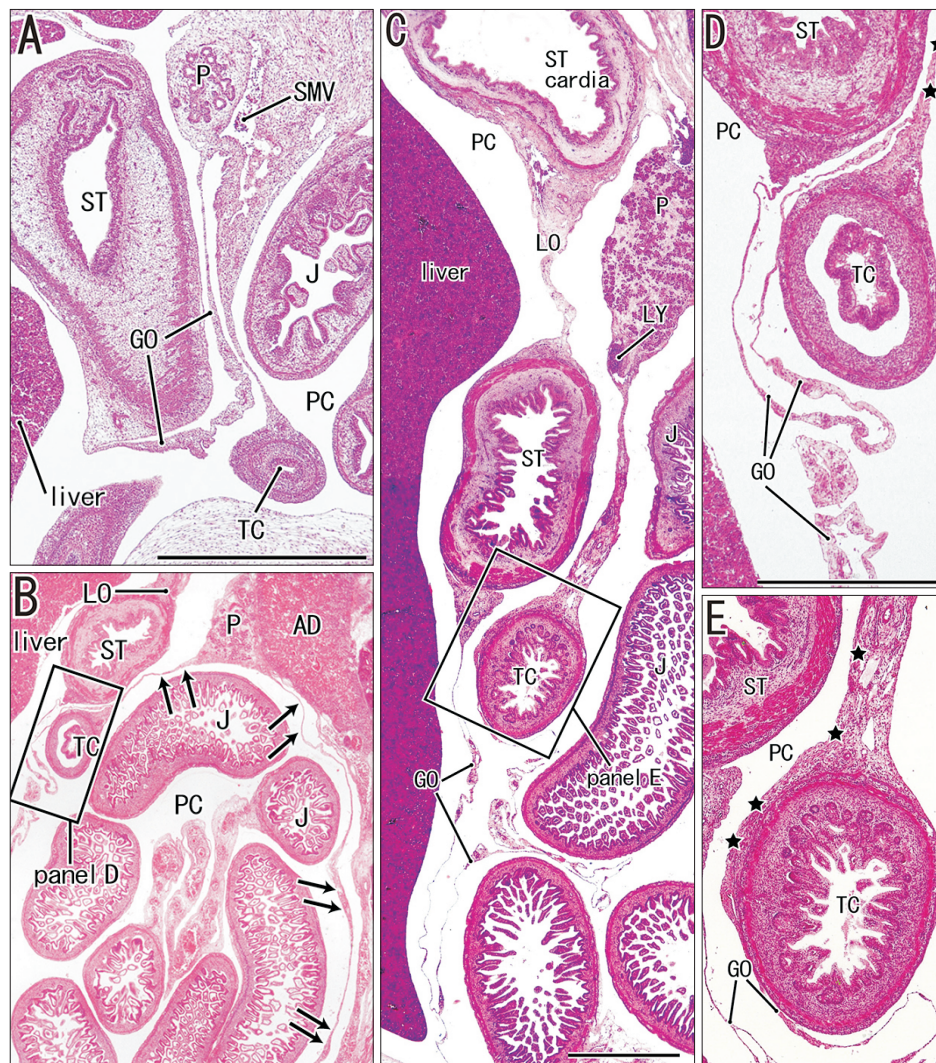
horizontally at 100–200- $\mu$ m intervals and stained with H&E. During dissection of the late-stage fetuses, photographs were taken with a Pentax K-1 camera equipped with a 50–100 mm zoom lens. Histological samples were observed and most photographs taken with a Nikon Eclipse 80, whereas photographs at ultra-low magnification (objective lens less than  $\times 1$ ) were taken with a high-grade flat scanner and translucent illumination (Epson scanner GTX970, Java, Indonesia). The study protocol was approved by the Ethics Committee of the Universidad Complutense (B08/374).

## Results

### Observations of midterm fetuses

Sagittal sections of 10 specimens (CRL, 32–78 mm; GA, 8–12 weeks) and horizontal sections of 35 specimens (CRL, 36–110 mm; GA, 8–15 weeks) were evaluated. Physiological umbilical herniation was seen in four of these specimens, of CRLs 32, 35, 38, and 45 mm, one sectioned sagittally and three sectioned horizontally.

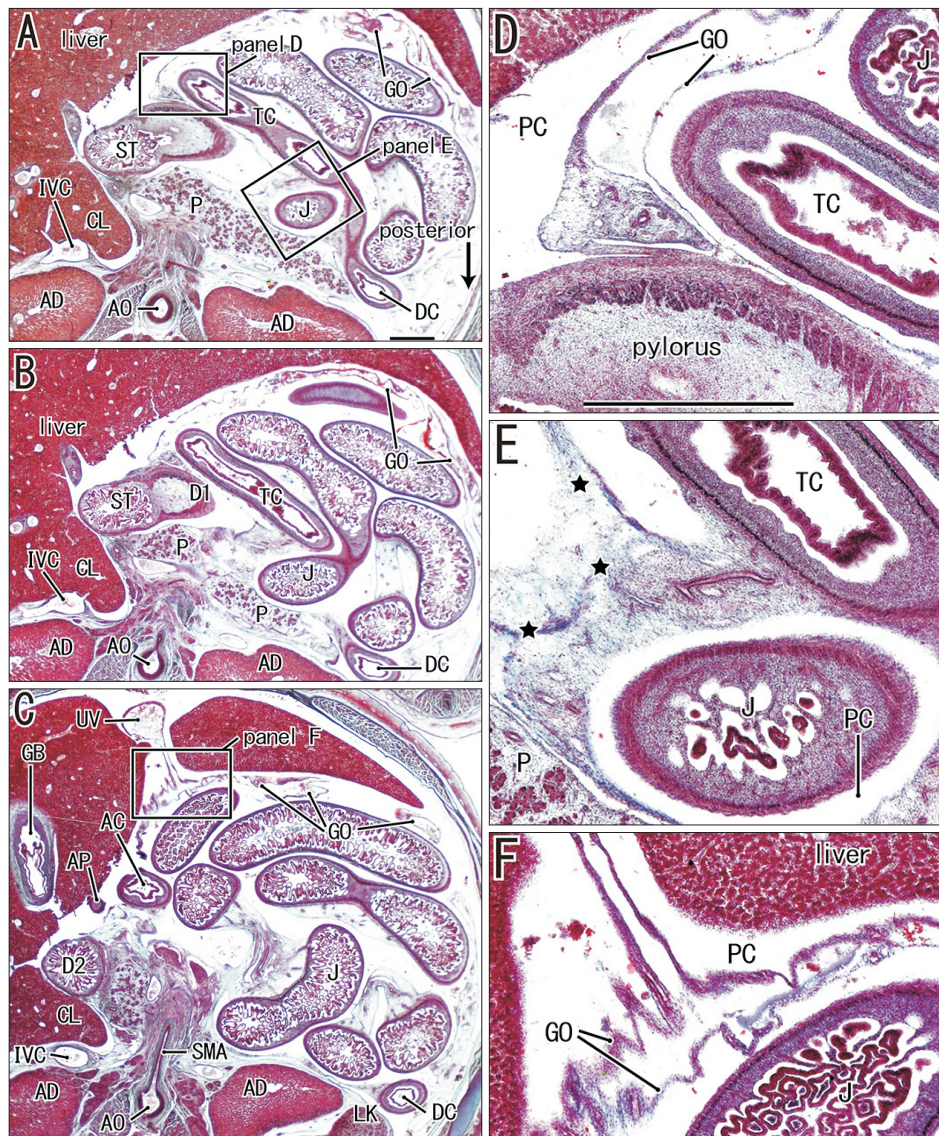
The transverse colon in all 10 sagittally sectioned speci-



**Fig. 2.** Sagittal sections of midterm fetuses. Panel A shows a specimen of crown-rump length (CRL) 32 mm (gestational age [GA] 8 weeks); panels B and D show a specimen of CRL 36 mm (GA 9 weeks); and panels C and E show a specimen of CRL 61 mm (GA 10 weeks). Panel B and C were prepared at the same magnification, and panels D and E are higher magnification views of the squares in panels B and C, respectively. (A) The greater omentum (GO) is separated from the transverse mesocolon. (B, C) The GO extends inferiorly from the stomach and is fused to the transverse mesocolon. However, the fusion plane cannot be identified (stars in panels D and E). (B) The mesocolon (arrows) is separated from the retroperitoneal structures below the pancreas (P). Scale bars=1 mm. AD, adrenal; J, jejunum; LO, lesser omentum; LY, lymph node; P, pancreas; PC, peritoneal cavity; SMV, superior mesentery vein; ST, stomach; TC, transverse colon.

mens (Fig. 2) was located below the stomach and behind the greater omentum. One of these specimens with physiological herniation (CRL, 32 mm) showed a separation between the transverse mesocolon and the greater omentum (Fig. 2A), whereas the transverse mesocolon in the other nine sagittally sectioned specimens was fused to the greater omentum

around and above the colon (Fig. 2B, C). However, the fusion plane was not identified at higher magnification (Fig. 2D, E). In two of the 10 sagittally sectioned specimens, the continuous mesentery of the ascending, transverse and descending colons was free of retro-abdominal structures, except for the pancreas, with this mesentery showing a reverse-U shaped

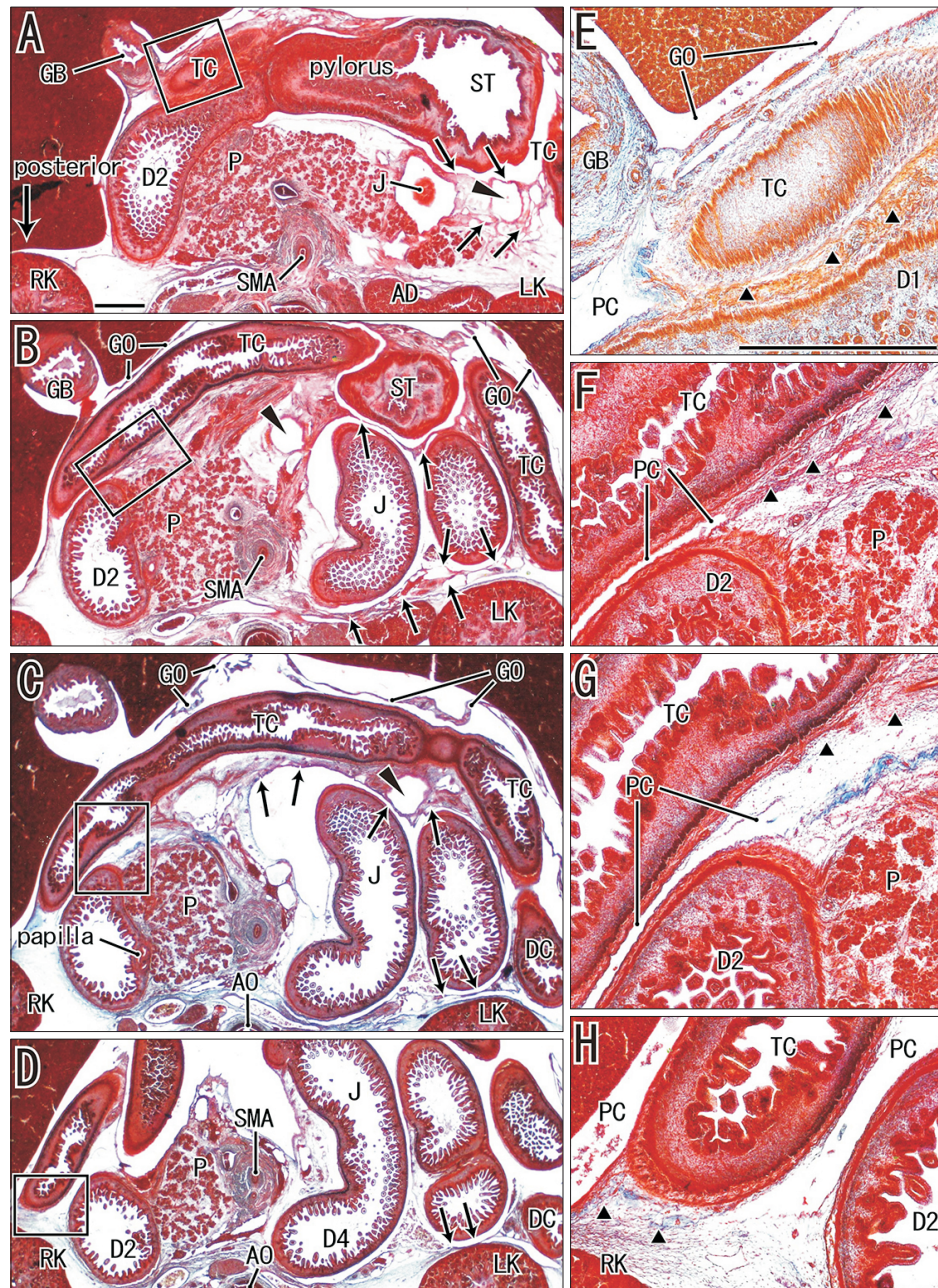


**Fig. 3.** Horizontal sections of a specimen of crown-rump length 48 mm. Panels A and C show the uppermost and lowermost sites in the figure, respectively. Intervals are 0.4 mm between panels A and B and 1.8 mm between panels B and C. Panels D and E are higher magnification views of squares in panel A, and panel F is a higher magnification of the square in panel C. The transverse colon (TC) is attached to the anterior surface of the pylorus as well as the superior or first portion of the duodenum (D1; A, B). The TC pushes up the greater omentum (GO; A, D), and the jejunum (J) pushes up the transverse mesocolon (A, E). The omentum is fused with the mesocolon (stars in panel E), and double laminae of the omentum extend anteriorly into the liver and enclose the umbilical vein (C, F). Panels A–C (D–E) were prepared at the same magnifications. Scale bars=1 mm. AC, ascending colon; AD, adrenal; AO, aorta; AP, appendix; CL, caudate lobe of the liver; D2, descending or second portion of the duodenum; DC, descending colon; GB, gallbladder; IVC, inferior vena cava; LK, left kidney; P, pancreas; PC, peritoneal cavity; SMA, superior mesentery artery; ST, stomach; UV, umbilical vein.

arrangement surrounding the jejunum and ileum (Fig. 2B). The double layers of the peritoneum were often difficult to identify at sites without vessels or fat in the greater omentum.

Similarly, the peritoneum was found to be a thin layer of mesothelium on the pancreas, stomach and colon.

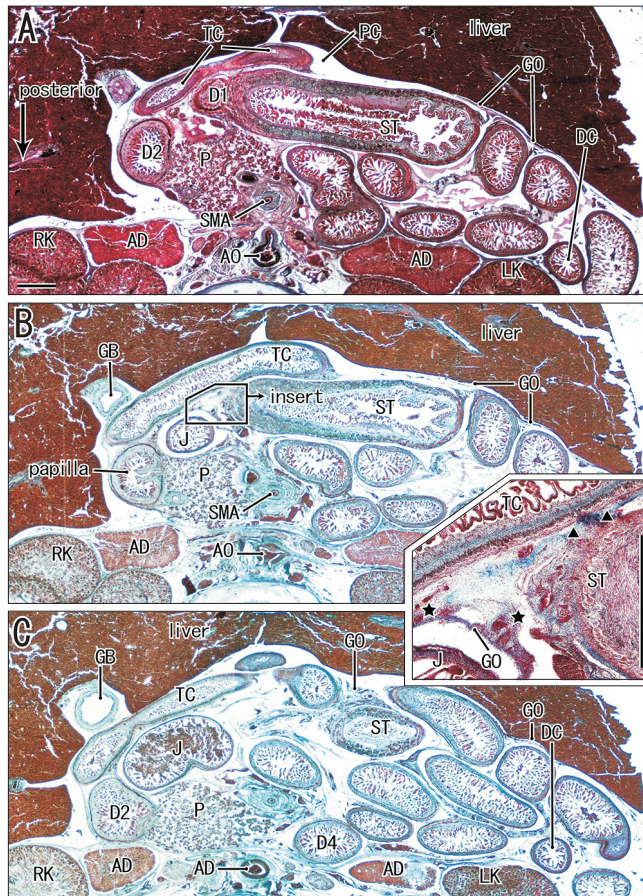
The transverse colon in most of the horizontally sectioned



**Fig. 4.** Horizontal sections of a specimen of crown-rump length 90 mm. Panels A and D show the uppermost and lowermost sites in the figure, respectively. Intervals between panels A and B, B and C, and C and D are 1.3 mm, 0.7 mm and 1.0 mm, respectively. Panels E–H are higher magnification views of squares in panels A–D, respectively. The transverse colon (TC) is attached to the anterior surface of the stomach (ST) as well as the superior or first portion of the duodenum (A, E). The jejunum (J) pushes up the transverse mesocolon (A). The greater omentum (GO) extends widely along the liver (B, C). The TC is tightly attached to the pylorus, the descending portion of the duodenum (D2), the pancreas (P) and the right kidney (RK) without specific borders (triangles in panels E–H). The transverse mesocolon is indicated by arrows (A–D). The arrowheads in panels A–C indicate a hole in the mesocolon. Panels A–D (E–H) were prepared at the same magnifications. Scale bars=1 mm. AD, adrenal; AO, aorta; D1, superior or first portion of the duodenum; D4, ascending or fourth portion of the duodenum; DC, descending colon; GB, gallbladder; LK, left kidney; P, pancreas; papilla, major duodenal papilla; PC, peritoneal cavity; SMA, superior mesentery artery; TC, transverse colon.

specimens was present in sections below the pylorus or antrum of the stomach. In these sections, the greater omentum was usually cut between the liver and colon, but it was sometimes folded and pushed by the jejunum to the liver left lobe. Notably, in six specimens, of CRLs 48, 55, 85, 90, 97, and 110 mm (GA, 10–15 weeks), part of the transverse co-

lon was attached to the anterior aspect of the gastric antrum and pylorus (Figs. 3–5). Although most of these colons were simply attached, the colon and stomach in one specimen, of CRL 97 mm, were connected by fibrous tissue (Fig. 5 inset). The transverse colon in these six specimens with prepyloric colon ran medially along the liver right lobe from the hepatic flexure, extended along the gastric greater curvature, and passed leftward and posteriorly to reach the splenic flexure. The final half of the course was situated between parts of the jejunum (Fig. 3A, B) or along the liver left lobe (Fig. 4C). The greater omentum extended along the liver left lobe, but was fused, in whole or in part, with the transverse mesocolon (Fig. 3E). The transverse mesocolon was also fused with the duodenopancreas (Fig. 4E–G) as well as with the renal fascia (Fig. 4H). The bag-like double layers of peritoneum were observed along the omentum (Fig. 3D, E). In addition, the duodenal loop always provided a C-loop, with its descending portion directed inferiorly. Thus, both the second and fourth portions were contained in a single horizontal section (Figs. 4D, 5C).



**Fig. 5.** Horizontal sections of a specimen of crown-rump length 97 mm. Panels A and C show the uppermost and lowermost sites in the figure, respectively. Intervals between panels A and B and B and C are 0.8 mm and 1.6 mm, respectively. The insert between panels B and C displays a higher magnification view of the irregular square in panel B. The transverse colon (TC) is attached to the anterior surface of the stomach (ST) as well as the superior or first portion of the duodenum (D1; A, B). The jejunum (J) pushes up the transverse mesocolon (panel B and inset). The greater omentum (GO) is fused with the mesocolon (stars in the inset and panel C) and the colon is tightly attached to the stomach without any specific borders (triangles in the insert). A major part of the GO is present along the left lobe of the liver (A–C). Panels A–C were prepared at the same magnification. Scale bars=1 mm. AD, adrenal; AO, aorta; D2, descending or second portion of the duodenum; D4, ascending or fourth portion of the duodenum; DC, descending colon; GB, gallbladder; LK, left kidney; P, pancreas; papilla, major duodenal papilla; PC, peritoneal cavity; RK, right kidney; SMA, superior mesentery artery; TC, transverse colon.

### Observations of late-stage fetuses

All 17 late-stage fetuses (GA 30–38 weeks) were macroscopically observed in a step-by-step manner during dissection for preparation of histological specimens (Figs. 6–9). In 15 specimens, the greater omentum extended inferiorly while shifting leftward (Fig. 6A, B), likely because the dilated ileum was located in the right half of the abdominal cavity. In one specimen (Fig. 6C), the greater omentum shifted rightward, possibly due to the dilated jejunum; and in one specimen (Fig. 7A), the greater omentum extended evenly and widely, covering almost the entire ileum and jejunum. Beneath the transparent omentum, the transverse colon extended along the left-right axis below the stomach. However, the right sided part of the transverse colon appeared to push the pylorus and/or the superior portion of the duodenum upward (Figs. 7A, 8A). When the transverse colon was reflected upward, a fan-like arrangement of branches of the middle colic artery and vein was observed in the transverse mesocolon (Fig. 7B). A cut line of the transverse mesocolon ran longitudinally across the pancreatic body (Figs. 7C, 8B). The mesocolon in 14 of the 17 specimens was attached to the right aspect of the superior or descending portion of the duodenum. However, the presence of bulky fat associated with the omentum and/or mesocolon made it difficult to determine macroscopically whether the colon was actually attached to the stomach (see below).

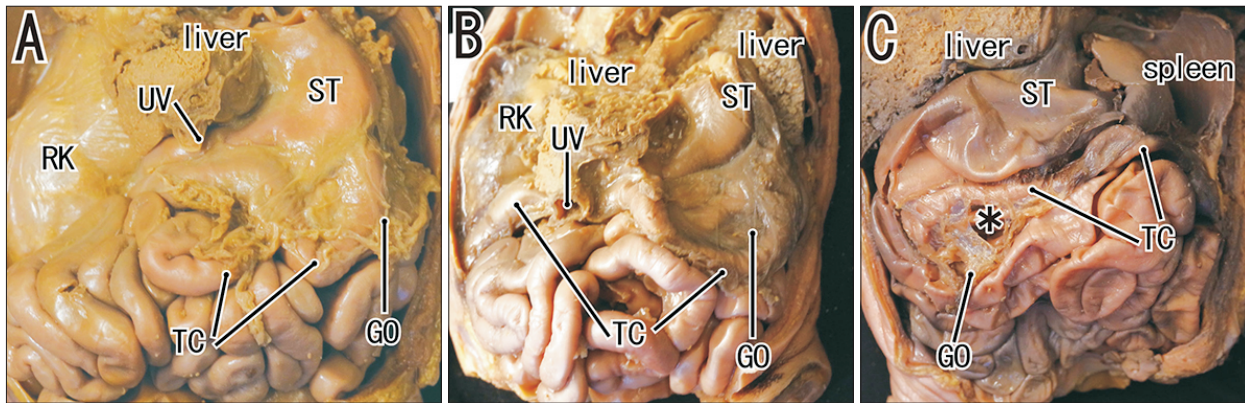


Fig. 6. Inter-individual differences in the macroscopic morphologies of the greater omentum. Panels A (of a fetus of crown-rump length [CRL] 258 mm) and B (of a fetus of CRL 264 mm) display the greater omentum (GO) extending leftward and inferiorly. The morphology of the way jejunum and ileum was similar in these fetuses. Panel C (of a fetus of CRL 272 mm) shows rightward shifting of the omentum, with the asterisk in panel C indicating an injury during dissection. RK, right kidney; ST, stomach; TC, transverse colon; UV, umbilical vein.

Histologic examination of five late-stage specimens showed that the transverse colon was attached to the right lower aspect of the gastric antrum in three specimens (Figs. 7D, 9D) and to the anterior aspect of the pylorus in two (Fig. 8C). The greater omentum or both the omentum and mesocolon were sandwiched by or wedged between the stomach and colon were observed at the attachment sites (Figs. 7E, 9E, H), depending on the arteries contained in the tissue samples. However, the omentum and mesocolon were not fused but separated by a narrow space. Likewise, a narrow space was seen at the attachment site of the transverse colon to the duodenum (Figs. 7G, 8E, 9H), but arteries of the colon appeared not to be involved at the interface. Histologic sections of a single specimen strongly suggested that the transverse colon pushed the superior portion of the duodenum in an upward direction (Fig. 9E, G). Finally, all duodenal loops were C-shaped, but the descending portion was often directed posteriorly. Thus, in these specimens, almost the entire duodenal loop was contained in a single horizontal section (Figs. 8D, 9D). In addition, when compared with our previous data [12], a lymphatic tissue development was not evident along the greater omentum and mesocolon as well as a fusion plane of the peritoneum along the duodenum and pancreas.

## Discussion

The present study demonstrated that the transverse mesocolon fused with the greater omentum at GA 8–9 weeks and that subsequently these peritoneal structures could not be distinguished in the common mesentery immediately after

repackaging from physiological herniation. However, at mid-term, we observed variants in the topographical anatomy of the transverse colon and stomach, including (1) a prepyloric transverse colon (GA 10–15 weeks), and (2) a transverse colon pushing the superior portion of the duodenum and pylorus upward (GA 10–15 weeks and 30–38 weeks). These variations seemed to modify the initial fusion between the mesocolon and greater omentum because the stomach is encapsulated by peritoneal laminae other than the transverse colon (Fig. 1). Actually, the colon was likely to tightly fuse with the stomach although the former maintained, in whole or in part, fusion with the greater omentum. We also found variations in the peritoneal configuration in late-stage fetuses: the stomach and transverse colon were likely to sandwich the greater omentum and/or the mesocolon (GA 30–38 weeks). Moreover, therein, the omentum and mesocolon were not fused but separated by a narrow space. Consequently, the initial fusion between the greater omentum and mesocolon was likely to be modified, changed or even broken in the later development and growth.

Those variants in the topographical anatomy of the transverse colon and stomach seemed to be caused by the more rapid growth of the colon than the stomach within the limited volume of the abdominal cavity. With the growth of this cavity, the prepyloric colon returned to its normal position, with the incidence of prepyloric colons being much lower in late-stage than in mid-term fetuses. Similarly, a colon located behind and below the stomach was likely to push the stomach upward. Detailed morphometry using magnetic resonance images of 377 embryos showed deflection of the stomach during the embryonic period [13], a deflection that may be

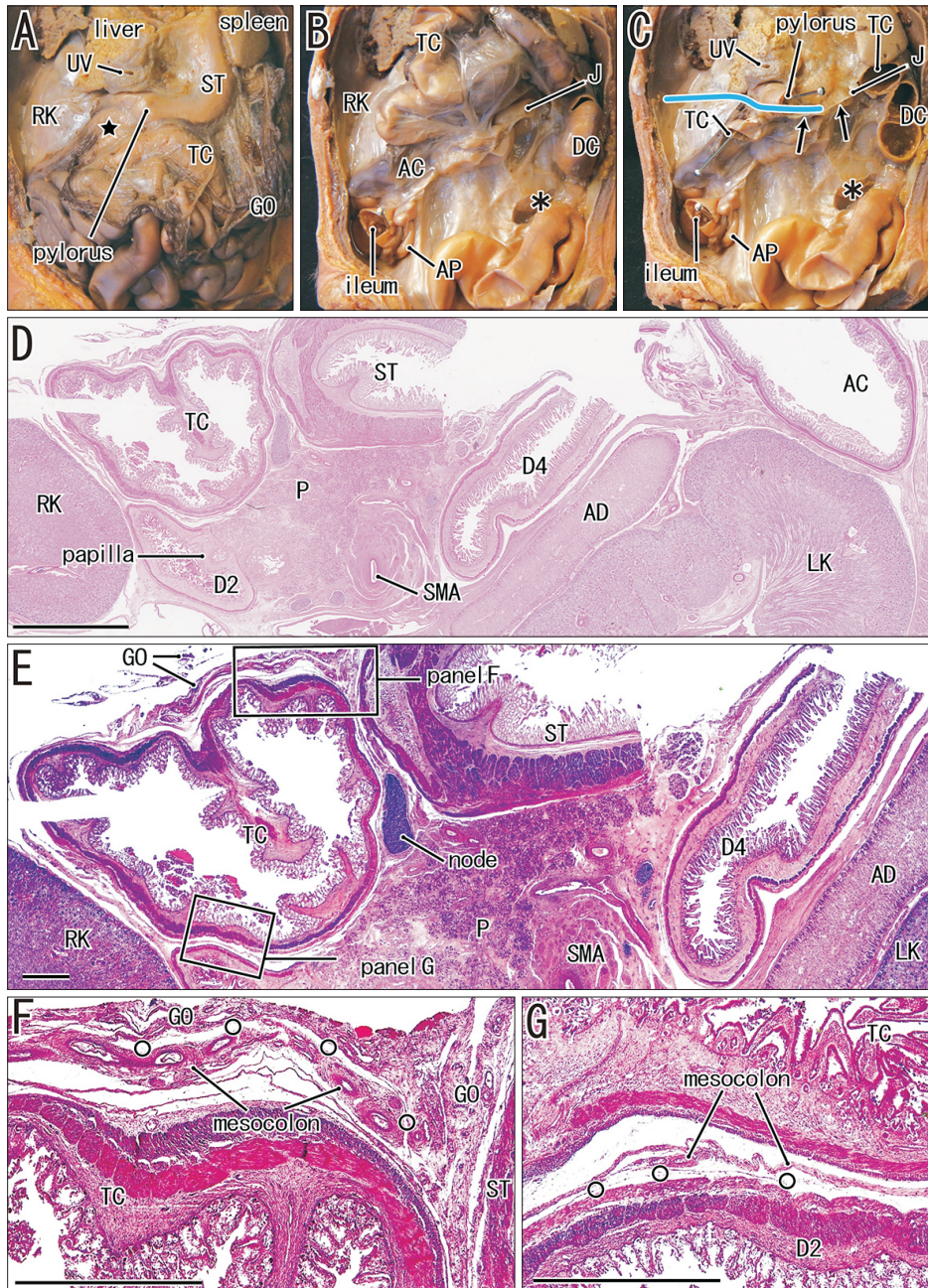
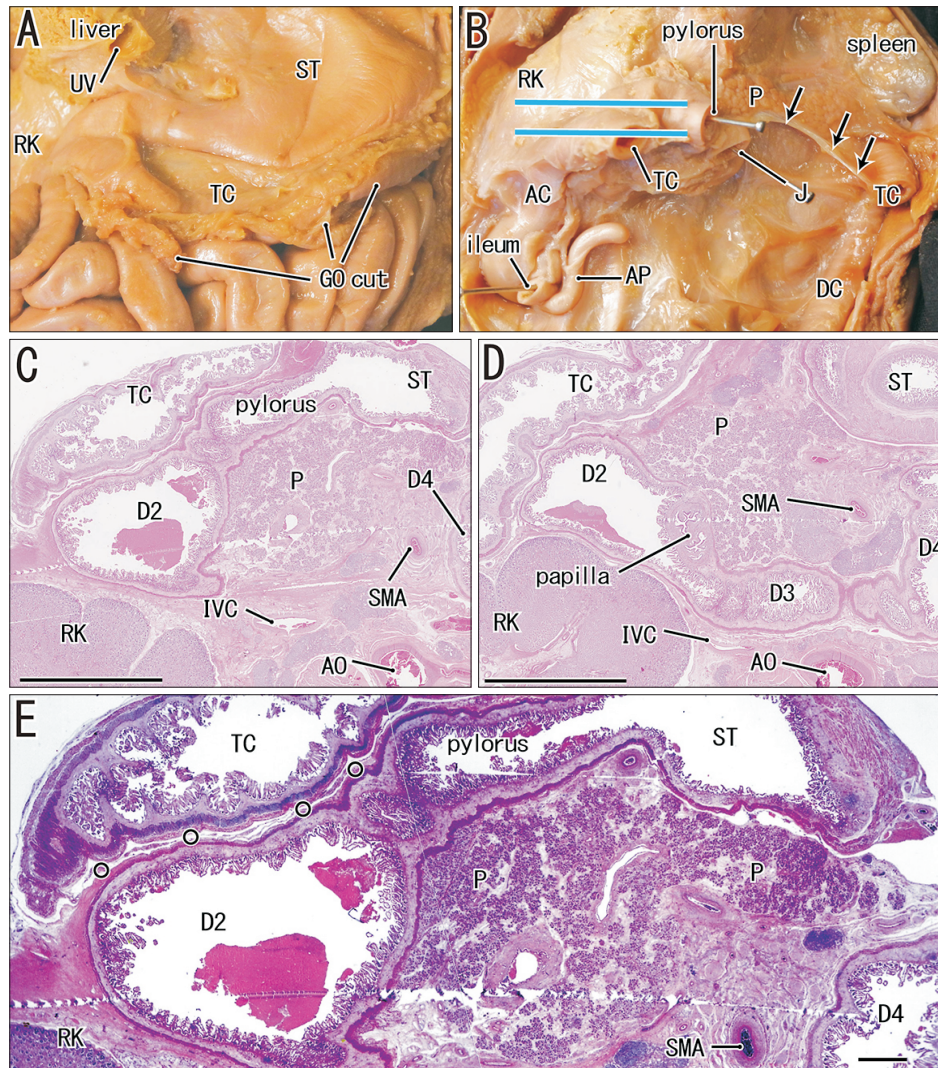


Fig. 7. Macroscopic and histologic observations of a specimen of crown-rump length 274 mm. Panel A shows the greater omentum (GO) extending inferiorly from the stomach and covering almost the entire jejunum and ileum. The transverse colon (TC) is located under the transparent omentum, and the right part of the TC appears wavy (star) near the pylorus. Panel B shows the transverse mesocolon reflected upward after removal of most parts of the ileum and jejunum (J). Panel C shows a cut line of the transverse mesocolon (arrows). The mesocolon is attached to the inferior aspect of the pylorus. Panel D shows the topographic anatomy of the upper abdomen, including the TC adjacent to the stomach (ST); this sectional plane is indicated by a blue line in panel C. Panel E shows the right anterior part of panel D, and panels F and G are higher magnification views of squares in panel E. The GO appears to cover the transverse mesocolon from the anterior side, with both separated by a narrow space (circles in panels F and G). Similarly, the mesocolon is separated from the peritoneum covering the second portion of the duodenum (D2; G). Scale bars=5 mm (D), 1 mm (E–G). AC, ascending colon; AD, adrenal; AP, appendix; DC, descending colon; LK, left kidney; P, pancreas; papilla, major duodenal papilla; RK, right kidney; SMA, superior mesentery artery; UV, umbilical vein.





**Fig. 8.** Macroscopic and histologic observations of a specimen of crown-rump length 262 mm. Panel A is an anterior view after removal of major parts of the liver and greater omentum (GO), showing an attachment between the transverse colon (TC) and the stomach (ST). Panel B displays a cut surface of the transverse mesocolon (arrows) along the pancreas (P) after removal of major parts of the ST, TC, jejunum (J) and ileum. Panels C and D are views along the horizontal planes indicated by the two blue lines in panel B. Panel C shows attachment of the TC to the anterior aspects of the pylorus and duodenum, and panel D shows attachment of the TC to the duodenum and right kidney (RK). Panel E is a higher magnification view of the central part of panel C. The TC is separated from the duodenum by a narrow peritoneal space (small circles). The duodenum, from the descending (D2) to the ascending (D4) portion, is seen in a single horizontal section (D). Scale bars=1 mm. AC, ascending colon; AO, aorta; AP, appendix; D3, horizontal or third portion of the duodenum; DC, descending colon; IVC, inferior vena cava; SMA, superior mesentery artery; UV, umbilical vein.

caused by upward growth of the transverse colon. Jeong et al. [14] described that, in late-stage human fetuses, a fusion plane of the transverse mesocolon with the other peritoneal structures is not simple but provides irregular and rough surfaces. Before the present study, we had considered this irregularity results from the secondarily degeneration of lymphatics after a great mass of lymphatic tissues appears along the peritoneal fusion in the upper abdomen at 18–20 weeks [12]. However,

according to their figures, the temporally increased lymphatics is not evident along a fusion plane between the greater omentum and transverse mesocolon.

Surgical maneuvers to separate the fused omentum and mesocolon (see the Introduction) may be performed simply along an avascular space, depending on the supplying arteries, i.e., the middle colic artery to the transverse mesocolon and the epiploic arteries to the greater omentum. Our findings

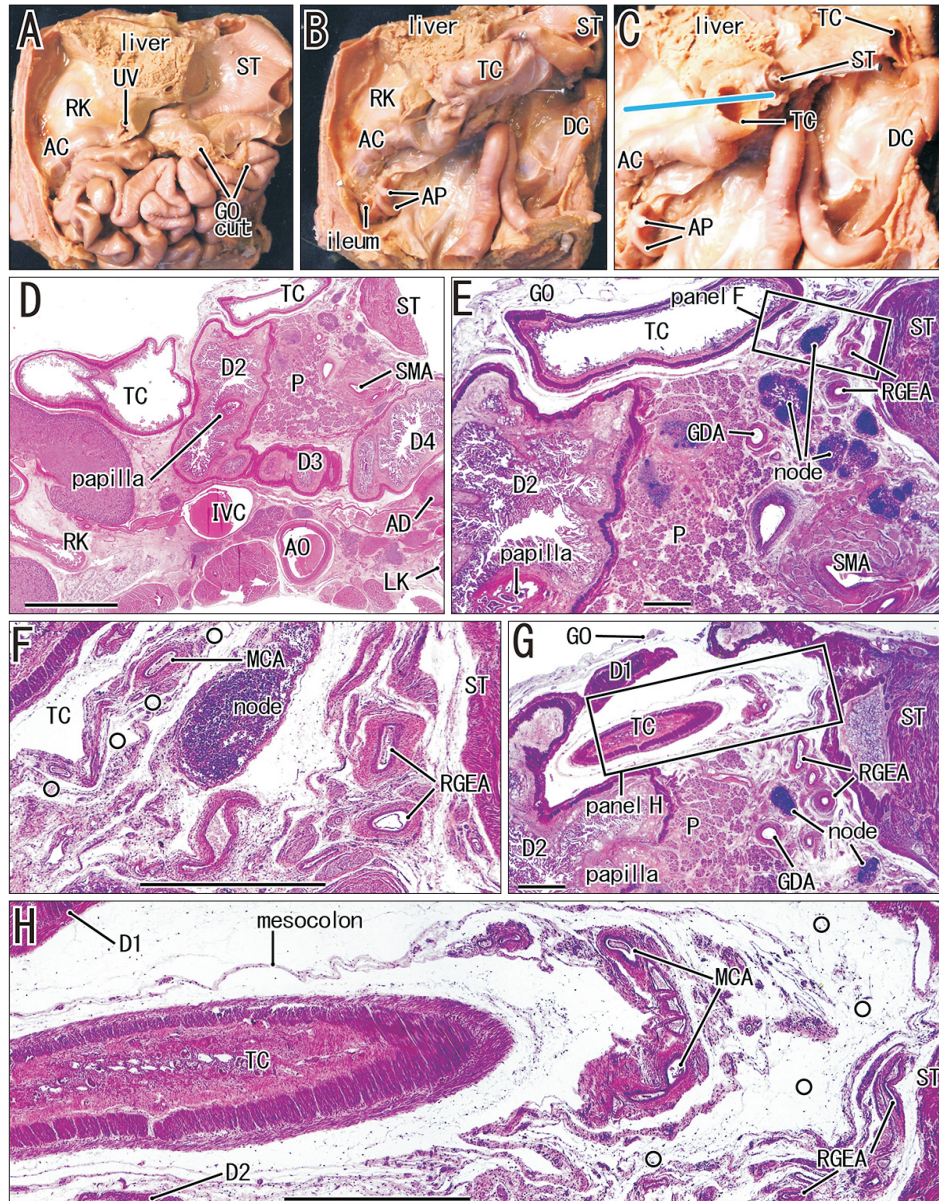


Fig. 9. Macroscopic and histologic observations of a specimen of crown-rump length 282 mm. Panels A displays the upper abdomen after removal of almost the entire liver and cutting of the greater omentum (GO). Panel B exhibits the transverse colon (TC) reflected upward after removal of most parts of the ileum and jejunum (J). Panel C shows partial removal of the TC. Panel D shows the topographical anatomy of the upper abdomen, including the TC, between the descending portion of the duodenum (D2) and the stomach (ST); this sectional plane is indicated by a blue line in panel C. Panel E shows the anterior part of panel E, panel F shows a higher magnification view of the square in panel E, and panel G shows a plane 1 mm above panel E. A comparison of panels E and G shows that the TC appears to push upward the superior portion of the duodenum (D1). Panel H is a higher magnification view of the square in panel G. Panels F and H both contain branches of the colic and gastric arteries (MCA, RGEA). The circles in panels F and H indicate a border between the GO and the mesocolon. The duodenum, from the descending to the ascending portion, is seen in a single horizontal section (D). Scale bars=5 mm (D), 1 mm (E-H). AC, ascending colon; AD, adrenal; AP, appendix; D3, horizontal or third portion of the duodenum; DC, descending colon; GDA, gastroduodenal artery; IVC, inferior vena cava; LK, left kidney; MCA, middle colonic artery; P, pancreas; papilla, major duodenal papilla; RGEA, right gastroepiploic artery; RK, right kidney; SMA, superior mesentery artery; UV, umbilical vein.

did not exclude the possibility that surgeons find a secondary loosening or separation of the peritoneal fusion due to fetal topographical changes among the stomach and transverse

colon. Another possibility also likely that, in adults with some pathological conditions involving increased lymphatic flow, the mesocolon and omentum may separate along their actual

fusion plane in development. During the same period as the transverse mesocolon is fused with the greater omentum, a reversed-U shaped arrangement of the continuous mesentery of the entire colon [10] may also fuse with the renal fascia. Similar to a separation of the greater omentum from the mesocolon, a surgical separation of the mesocolon from the renal fascia is also a basic surgical maneuver [15, 16], but there may be a “trick” for the easy separation in fetal development as seen in the omentum-mesocolon fusion in the present study. Consequently, a logical lamination of the peritoneum seemed not to simply connect with the surgical application.

The greater omentum also exhibited variations in the direction of extension, with the most striking feature being the rarity of usual wide omenta in fetuses. We had regarded a left or right shift of the omentum as resulting from inflammation in mesenteric lymph nodes and omental milky spots after birth. Indeed, folding, fusion and adhesion of the greater omentum are often seen in adult cadavers [17]. However, some of these variations were likely established in fetuses even without abnormal rotation of their intestines. The location of dilated parts of the intestine as well as individual variations in upper abdominal anatomy, such as prepyloric colon, seemed to determine the morphology of the greater omentum. The leftward growth of the great curvature of the stomach has also accelerated the left shift of the omentum. Finally, we stated about an almost horizontal duodenal loop at late stage of the duodenum in contrast to the usual C-loop in the frontal plane: this temporal horizontal loop might result from differences in growth rates between portions of the duodenum. Overall, after repackaging of physiological herniation, topographical anatomy in the upper abdomen seemed not to be stable but continue to change.

### Study limitation

The absence of prepyloric colons from sagittal sections was likely due to the small number of specimens that underwent sagittal sectioning. This was an important limitation of the present study.

### ORCID

Daisuke Suzuki: <https://orcid.org/0000-0002-0162-7572>

Ji Hyun Kim: <https://orcid.org/0000-0002-9653-7261>

Shunichi Shibata: <https://orcid.org/0000-0003-3412-7002>

Gen Murakami: <https://orcid.org/0000-0001-7181-5475>

José Francisco Rodríguez-Vázquez:

<https://orcid.org/0000-0001-5423-4492>

### Author Contributions

Conceptualization: DS, JHK, GM. Data acquisition: DS, SS, JFRV. Data analysis or interpretation: JHK, GM, JFRV. Drafting of the manuscript: DS, JHK, GM. Critical revision of the manuscript: SS, GM, JFRV. Approval of the final version of the manuscript: all authors.

### Conflicts of Interest

No potential conflict of interest relevant to this article was reported.

### References

- Carlson BM. Human embryology and developmental biology. 2nd ed. Philadelphia, PA: Mosby Elsevier; 2009. p.353-92.
- Schoenwolf GC, Bleyl SB, Brauer PR, Francis-West PH. Larsen's human embryology. 4th ed. Philadelphia, PA: Churchill Livingstone Elsevier; 2009. p.435-77.
- Sugarbaker PH. Peritonectomy procedures. *Ann Surg* 1995;221:29-42.
- Kurokawa Y, Doki Y, Mizusawa J, Terashima M, Katai H, Yoshikawa T, Kimura Y, Takiguchi S, Nishida Y, Fukushima N, Iwasaki Y, Kaji M, Hirao M, Katayama H, Sasako M. Bursectomy versus omentectomy alone for resectable gastric cancer (JCOG1001): a phase 3, open-label, randomised controlled trial. *Lancet Gastroenterol Hepatol* 2018;3:460-8.
- Cho BH, Kimura W, Song CH, Fujimiya M, Murakami G. An investigation of the embryologic development of the fascia used as the basis for pancreaticoduodenal mobilization. *J Hepatobiliary Pancreat Surg* 2009;16:824-31.
- Kim WK, Kim H, Ahn DH, Kim MH, Park HW. Timetable for intestinal rotation in staged human embryos and fetuses. *Birth Defects Res A Clin Mol Teratol* 2003;67:941-5.
- Metzger R, Metzger U, Fiegel HC, Kluth D. Embryology of the midgut. *Semin Pediatr Surg* 2011;20:145-51.
- Soffers JH, Hikspoors JP, Mekonen HK, Koehler SE, Lamers WH. The growth pattern of the human intestine and its mesentery. *BMC Dev Biol* 2015;15:31.
- Ueda Y, Yamada S, Uwabe C, Kose K, Takakuwa T. Intestinal rotation and physiological umbilical herniation during the embryonic period. *Anat Rec (Hoboken)* 2016;299:197-206.
- Cho BH, Kim JH, Jin ZW, Wilting J, Rodríguez-Vázquez JF, Murakami G. Topographical anatomy of the intestines during in utero physiological herniation. *Clin Anat* 2018;31:583-92.
- Rigoard P, Hausteine SV, Doucet C, Scepti M, Richer JP, Faure JP. Development of the right colon and the peritoneal surface dur-

- ing the human fetal period: human ontogeny of the right colon. *Surg Radiol Anat* 2009;31:585-9.
12. Kim JH, Han EH, Jin ZW, Lee HK, Fujimiya M, Murakami G, Cho BH. Fetal topographical anatomy of the upper abdominal lymphatics: its specific features in comparison with other abdominopelvic regions. *Anat Rec (Hoboken)* 2012;295:91-104.
  13. Kaigai N, Nako A, Yamada S, Uwabe C, Kose K, Takakuwa T. Morphogenesis and three-dimensional movement of the stomach during the human embryonic period. *Anat Rec (Hoboken)* 2014;297:791-7.
  14. Jeong YJ, Cho BH, Kinugasa Y, Song CH, Hirai I, Kimura W, Fujimiya M, Murakami G. Fetal topohistology of the mesocolon transversum with special reference to fusion with other mesenteries and fasciae. *Clin Anat* 2009;22:716-29.
  15. Culligan K, Remzi FH, Soop M, Coffey JC. Review of nomenclature in colonic surgery: proposal of a standardised nomenclature based on mesocolic anatomy. *Surgeon* 2013;11:1-5.
  16. Culligan K, Walsh S, Dunne C, Walsh M, Ryan S, Quondamatteo F, Dockery P, Coffey JC. The mesocolon: a histological and electron microscopic characterization of the mesenteric attachment of the colon prior to and after surgical mobilization. *Ann Surg* 2014;260:1048-56.
  17. Sato Y, Matsuki S, Yamamoto T, Goto H. Adhesion of the greater omentum seen in adult cadavers. *Nihon Univ J Med* 1960;19:3384-91.