

RESEARCH ARTICLE

Prevalence and predictors of uterine rupture among Ethiopian women: A systematic review and meta-analysis

Melaku Desta^{1*}, Haile Amha², Keralem Anteneh Bishaw¹, Fentahun Adane³, Moges Agazhe Assemie⁴, Getiye Dejenu Kibret⁴, Nigus Billilign Yimer⁵

1 Department of Midwifery, College of Health Sciences, Debre Markos University, Debre Markos, Ethiopia, **2** Department of Nursing, College of Health Sciences, Debre Markos University, Debre Markos, Ethiopia, **3** Department of Biomedical Sciences, School of Medicine, Debre Markos University, Debre Markos, Ethiopia, **4** Department of Public health, College of Health Sciences, Debre Markos University, Debre Markos, Ethiopia, **5** Department of Midwifery, College of Health Sciences, Woldia University, Woldia, Ethiopia

* melakd2018@gmail.com



Abstract

Background

Uterine rupture has a significant public health importance, contributing to 13% of maternal mortality and 74%-92% of perinatal mortality in Sub-Saharan Africa, and 36% of maternal mortality in Ethiopia. The prevalence and predictors of uterine rupture were highly variable and inconclusive across studies in the country. Therefore, this systematic review and meta-analysis aimed to estimate the pooled prevalence and predictor of uterine rupture in Ethiopia.

Methods

This systematic review and meta-analysis followed the Preferred Reporting Items for Systematic Reviews and Meta-Analyses 2009 checklist. PubMed, Cochrane Library, Google Scholar, and African Journals Online databases were searched. The Newcastle- Ottawa quality assessment tool was used for critical appraisal. I^2 statistic and Egger's tests were used to assess the heterogeneity and publication bias, respectively. The random-effects model was used to estimate the pooled prevalence and odds ratios with a 95% confidence interval.

Results

Sixteen studies were included, with a total of 91,784 women in the meta-analysis. The pooled prevalence of uterine rupture was 2% (95% CI: 1.99, 3.01). The highest prevalence was observed in the Amhara regional state (5%) and the lowest was in Tigray region (1%). Previous cesarean delivery (OR = 9.95, 95% CI: 3.09, 32.0), lack of antenatal care visit (OR = 8.40, 95% CI: 4.5, 15.7), rural residence (OR = 4.75, 95% CI: 1.17, 19.3), grand multiparity (OR = 4.49, 95% CI: 2.83, 7.11) and obstructed labor (OR = 6.75, 95% CI: 1.92, 23.8) were predictors of uterine rupture.

OPEN ACCESS

Citation: Desta M, Amha H, Anteneh Bishaw K, Adane F, Assemie MA, Kibret GD, et al. (2020) Prevalence and predictors of uterine rupture among Ethiopian women: A systematic review and meta-analysis. PLoS ONE 15(11): e0240675. <https://doi.org/10.1371/journal.pone.0240675>

Editor: Gizachew Tessema, Curtin University, AUSTRALIA

Received: July 23, 2019

Accepted: September 30, 2020

Published: November 2, 2020

Peer Review History: PLOS recognizes the benefits of transparency in the peer review process; therefore, we enable the publication of all of the content of peer review and author responses alongside final, published articles. The editorial history of this article is available here: <https://doi.org/10.1371/journal.pone.0240675>

Copyright: © 2020 Desta et al. This is an open access article distributed under the terms of the [Creative Commons Attribution License](https://creativecommons.org/licenses/by/4.0/), which permits unrestricted use, distribution, and reproduction in any medium, provided the original author and source are credited.

Data Availability Statement: All relevant data are within the manuscript and its [Supporting Information](#) files.

Funding: The author(s) received no specific funding for this work.

Competing interests: The authors have declared that no competing interests exist.

Conclusion

Uterine rupture is still high in Ethiopia. Therefore, proper auditing on the appropriateness of cesarean section and proper labor monitoring, improving antenatal care visit, and birth preparedness and complication readiness plan are needed. Moreover, early referral and family planning utilization are the recommended interventions to reduce the burden of uterine rupture among Ethiopia women.

Introduction

Uterine rupture is a rare catastrophic obstetric complication. It is a complete rupture with direct communication between the uterine cavity and the [peritoneum](#), or a partial rupture in which tearing in the myometrium is covered by the visceral leaf of the peritoneum with no involvement of [fetal membranes](#) and without intra-abdominal haemorrhage [1, 2]. Despite the recent advances in modern obstetrics, uterine rupture remained the major cause of fetal and maternal morbidity and mortality in Sub-Saharan Africa (SSA), contributing to about 13% of maternal mortality and perinatal mortality of 74% - 92% [3, 4].

A study conducted by the World Health Organization (WHO) reported that the prevalence of uterine rupture in developing countries was much higher than the developed world [5]. However, in high-income countries, [uterine rupture](#) occurs frequently among women who attempt a [trial of labor](#) in the previous [caesarean section](#) (CS), which varies from 0.22% to 0.78% [6–8]. The risk of rupture increased with short birth interval [9, 10], obstructed labor and poor obstetric care in developing countries [11]. On the other hand, it was reported lower (0.007%) among women in the Netherlands [12], United Kingdom [13], and the United States [14].

The government of Ethiopia is providing a basic emergency obstetric and newborn care to reduce maternal mortality and morbidity. Despite this, the maternal mortality ratio (412/100,000 live births) is still one of the highest in the world [15]. Studies showed that 2.7%-21.4% of maternal deaths attributed to uterine rupture in Ethiopia [4, 16, 17]. The prevalence and predictors of uterine rupture vary across different areas in Ethiopia. It occurs 1.8% in Dilla university hospital [18], 3.8% in Debre Markos hospital [16], and 1.4% in Nekemte Hospital [19]. Different studies reported that various factors have an association with uterine rupture; such as being a rural resident [18, 20–22], absence of Antenatal care (ANC) visit [18, 20–24], partograph utilization [23–25], high parity [19–22, 24, 25], previous CS [20, 22, 25], obstructed labor [22, 23, 25], and hydrocephalus baby [24, 25].

So far, there are highly variable findings regarding the prevalence and predictors of uterine rupture and are inconclusive at the national level for policymakers. For this, a systematic review to be conducted to provide evidence that required for best practice. Therefore, this systematic review and meta-analysis aimed to estimate the pooled prevalence of uterine rupture and its predictors among Ethiopian women.

Methods

Systematic review registration, data sources and search strategies

This systematic review and meta-analysis have designed to estimate the pooled prevalence of uterine rupture and predictors among Ethiopian women. We registered the protocol with the International Prospective Register of Systematic Reviews (PROSPERO), University of York

Center for Reviews and Dissemination (<https://www.crd.york.ac.uk/>), with a registration number CRD42019119620. The findings of the review were reported based on the Preferred Reporting Items for Systematic Review and Meta-Analysis (PRISMA) 2009 statement checklist [26] (S1 Table). All published articles were searched in major international databases such as PubMed, Cochrane Library, Google Scholar, and African Journals Online databases. Onwards, a search of the reference lists of the identified studies was done to retrieve additional articles. For this review, the PECO (Population, Exposure, Comparison and Outcomes) search strategy was used.

Population: women who had uterine rupture in Ethiopia.

Exposure: predictors of uterine rupture e.g. place of residence either rural or urban, the duration of labor, obstructed labor (presence or absence of obstructed labor) and having ANC visit or not, previous cesarean delivery or vaginal delivery.

Comparison: the reported reference group for each predictor in each respective variable.

Outcome: uterine rupture among Ethiopian women was the outcome of interest.

The primary outcome was the prevalence of uterine rupture among Ethiopian women.

Uterine rupture is a partial or complete tear of the uterine wall during pregnancy or delivery [5].

The secondary outcomes were: the predictors of uterine rupture such as previous cesarean delivery, place of residence, ANC visit, gravidity, and obstructed labor. For each selected PECO component, the electronic databases were searched using keywords and the medical subject heading [MeSH] terms. The quest for keywords includes prevalence, uterine rupture and predictors or determinants, as well as Ethiopia. The search terms were combined by the Boolean operators "OR" and "AND" (S2 Table).

Eligibility criteria and study selection

This review included studies that reported either the prevalence of uterine rupture or the predictors of uterine rupture in Ethiopia. All English language published studies released up to the end of our search period (30/3/2019) were retrieved to this systematic reviews and meta-analysis. Case reports of populations, surveillance data (demographic health survey), abstracts of conferences, and articles without full access were excluded. First, through review of title, abstract and full paper was done by two reviewers (MD and HA). Any disagreement with the two reviewers was settled by consensus. Then, a full-text analysis of potentially qualifying studies including identification of duplicated records. Only the full-text article was retained in case of duplication.

Quality assessment and data collection

The Newcastle-Ottawa Scale (NOS) quality assessment tool was used to assess the quality of included studies based on the three components [27]. The principal component of the tool graded from five stars and emphasized on the methodological quality of each primary study. The other component of the tool graded from two stars and concerns about the comparability of each study and the last component of the tool graded from three stars and used to assess the outcomes and statistical analysis of each original study. The NOS has three categorical criteria with a maximum score of 9 points. The quality of each study was rated using the following scoring algorithms: ≥ 7 points were considered as "good", 2 to 6 points were considered as "fair", and ≤ 1 point was considered as "poor" quality study. Accordingly, in order to improve the validity of this systematic review result, we only included primary studies with fair to good quality. Then, the two reviewers (MD and HA) independently assessed or extracted the articles for overall study quality and or inclusion in the review using a standardized data extraction

format. The data extraction format included primary author, publication year, and region of the study, sample size, and prevalence, and the selected predictors of uterine rupture.

Publication bias and, statistical analysis

The publication bias was assessed using the Egger's [28] and Begg's [29] tests with a p-value of less than 0.05. I^2 statistic was employed to assess heterogeneity among studies and a p-value less than 0.05 was used to declare heterogeneity. As a result of the presence of heterogeneity, the random-effects model was used as a method of analysis to estimate the DerSimonian and Laird's pooled effect [30]. In the current meta-analysis, arcsine-transformed proportions were used. The pooled proportion was estimated using the back-transform of the weighted mean of the transformed proportions, using arcsine variance weights for the fixed-effects model and DerSimonian-Laird weights for the random-effects model [31].

Data were extracted in Microsoft Excel and exported to Stata version 11 for analysis. Subgroup analysis was conducted by region and type of study design. Besides, a meta-regression model was done based on sample size and year of publication to identify the sources of random variations among included studies. The effect of selected determinant variables was analyzed using separate categories of meta-analysis [32]. The findings of the meta-analysis were presented using forest plot and Odds Ratio (OR) with its 95% CI. Additionally, we performed a sensitivity analysis to assess whether the pooled prevalence estimates were influenced by individual studies.

Results

Study identification and characteristics of included studies

This systematic review and meta-analysis included published studies on the prevalence of uterine rupture in Ethiopia using international electronic databases. The review found a total of 1050 published articles. From those, 150 duplicated records were removed and 880 articles were excluded through screening of the title and abstracts. After that, a total of 20 full-text papers were assessed for eligibility based on the inclusion and exclusion criteria and four studies were excluded due to lack of full paper access [33–36]. Finally, 16 studies were included in the final quantitative meta-analysis (Fig 1).

Characteristics of the included studies

Regarding the design of the included studies, nine were cross-sectional, three were case-control and the remained one study was cohort. Of those, three studies did not report prevalence data, were used to show only the predictors of uterine rupture [20, 22, 37]. The review was conducted among 91,784 women to estimate the pooled prevalence of uterine rupture. The largest sample size (28,835) was observed in the Amhara region [38] and the study with smallest sample was conducted at Nekemte Hospital, Oromia region [19]. All studies were conducted in five regions of Ethiopia. Of these studies, five were from Amhara region [16, 22, 25, 39, 40] another four from Southern Nations, Nationalities and Peoples Representative (SNNPR) [18, 21, 23, 41], four from Tigray [4, 24, 37, 42], two from Oromia [19, 20], and the remained one [43] was from Addis Ababa (Table 1).

Prevalence of uterine rupture

The meta-analysis of thirteen studies showed that the pooled prevalence of uterine rupture in Ethiopia was 2% (95% CI: 1.99, 3.01). A random-effect model was used due to the presence of significant heterogeneity ($I^2 = 96.7\%$, $p\text{-value} < 0.05$) (Fig 2). There is no publication bias based on the Eggers and Beggs test with a p-value of 0.249 and 0.246, respectively. The subgroup analysis

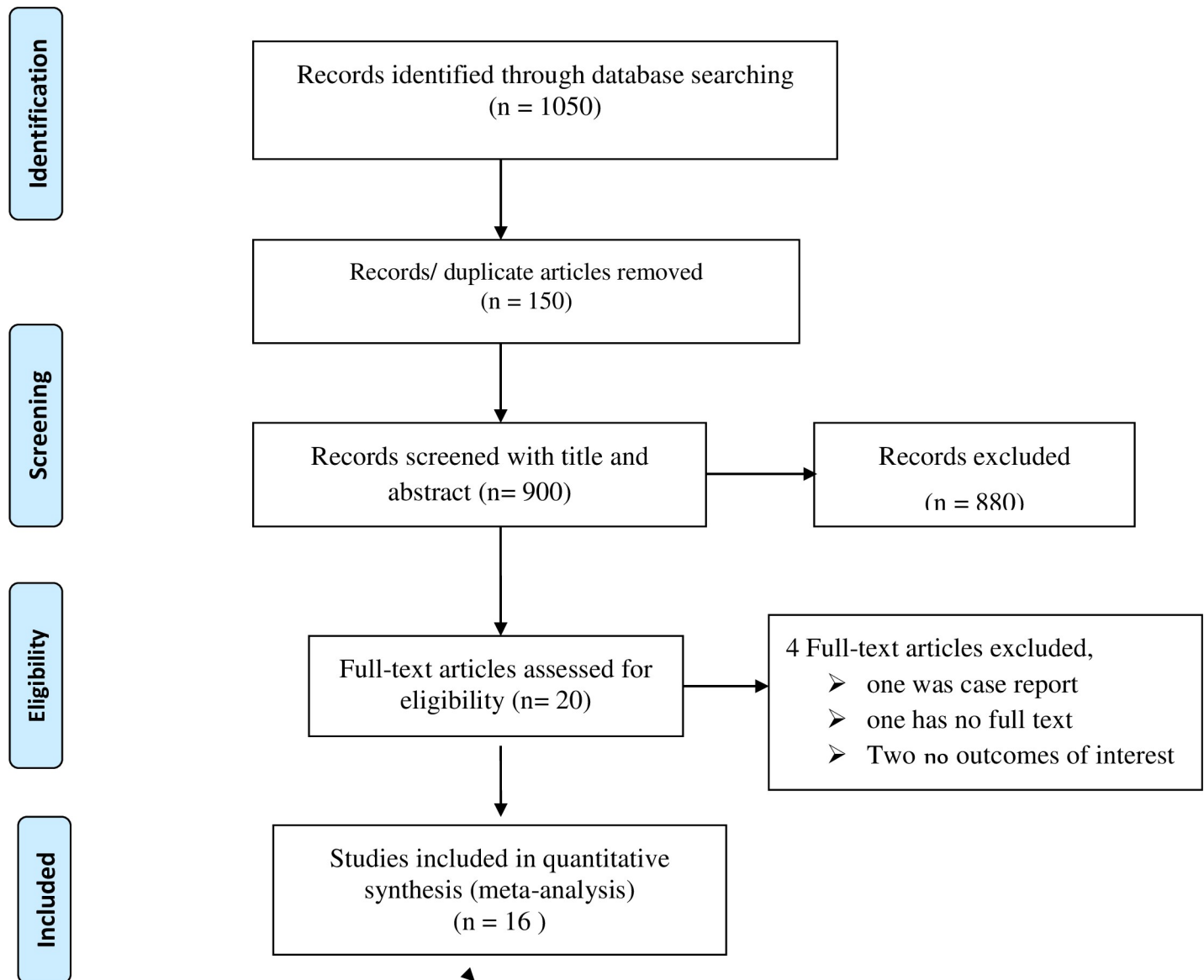


Fig 1. PRISMA flow diagram of prevalence and predictors of uterine rupture in Ethiopia.

<https://doi.org/10.1371/journal.pone.0240675.g001>

revealed that the highest prevalence of uterine rupture occurred in the Amhara region, 5% (95% CI: 2.61, 8.37) and the lowest (1%) was observed in Tigray region (Fig 3). The funnel plot observation showed that there is a symmetrical distribution (Fig 4). In addition, sub-group analysis showed that the highest prevalence of uterine rupture was reported in case-control studies (4% (95% CI: 2.0, 5.0)) (Table 2). The univariate meta-regression model was done to identify the possible sources of heterogeneity based on the year of publication, type of study design and sample size, but none of these variables were found to be statistically significant (p -value >0.05).

Sensitivity analysis

The result of sensitivity analyses using the random-effects model revealed that there was no single study unduly influenced the overall estimate of uterine rupture among Ethiopian

Table 1. Characteristics of included studies in Ethiopia.

Author	Type of study	Region	Year	Sample	Case
Gessew & Mengstie [4]	Cross sectional	Tigray	2002	5980	66
Admasu A et al. [16]	Cross sectional	Amhara	2004	1830	70
Astatkie G et al. [39]	Cross sectional	Amhara	2017	10379	254
Berhe Y et al. [42]	Cross sectional	Tigray	2015	5185	47
Dadi TL and yanirbab TE [21]	Case control	SNNPR	2017	9789	121
Yemane Y & Gizew [23]	Case control	SNNPR	2017	352	71
Mengstie H et al. [41]	Cross sectional	SNNPR	2016	8509	115
Getahun WT et al. [25]	Cross sectional	Amhara	2018	750	125
Denekew HT et al. [40]	Cross sectional	Amhara	2018	28835	262
Deneke F et al. [43]	Cross sectional	Addis Ababa	1996	127	8
Eshetie A et al. [18]	Cohort study	SNNP	2018	2498	46
Gebre S et al. [24]	Case control	Tigray	2017	5622	93
Bekabi TT [19]	Cross-sectional	Oromia	2018	3808	54
Workie A et al. [22]	Case control	Amhara	2018	-	
Bereka MT et al. [37]	Case control	Tigray	2018	-	
Abebe F et al. [20]	Case control	Oromia	2018	-	

<https://doi.org/10.1371/journal.pone.0240675.t001>

women (S1 Fig). The sensitivity analysis also revealed that removing four findings based on study design have not influenced or changed the pooled prevalence of uterine rupture.

Predictors of uterine rupture

Association of previous cesarean section and uterine rupture

The meta-analysis of three studies [20, 22, 25] revealed that previous cesarean delivery was a significant predictor of uterine rupture. Women who had previous CS were ten times (OR: 9.95, 95% CI: 3.09, 32.1) more likely to have uterine rupture than women who did not have previous CS (Fig 5).

Absence of antenatal care and uterine rupture. The meta-analysis of eight studies [18–24] revealed that an absence of ANC visit was another major predictor of uterine rupture in Ethiopia. Those women who had no ANC visit were 8.4 times (OR: 8.40 95% CI: 4.5, 15.7) more likely to experience a uterine rupture compared to mothers who attended ANC visit (Fig 6). The random-effects model was used due to a significant heterogeneity (with $I^2 = 85%$, a p-value of <0.05).

Association of place of residence and uterine rupture. Rural residents were more likely to had uterine rupture than those residing in the urban area (OR: 4.75, 95% CI: 1.17, 19.3) based on the pooled analysis of four studies [18, 20–22] (Fig 7).

Association of obstructed labour and uterine rupture. The meta-analysis of five studies [22–25] also showed the odds of uterine rupture were more likely by nearly 7-folds (OR: 6.75, 95%CI: 1.92, 23.8) among those who had obstructed labour than those have no obstructed labour (Fig 8). The random-effects model was used due to presence of heterogeneity between the studies (p-value <0.05).

Association of parity with uterine rupture. Based on the pooled results of seven studies included [19–22, 24, 25]; the meta-analysis also showed that grand multiparous women were 4.49 times (OR: 4.49, 95% CI: 2.83, 7.11) more likely to have uterine rupture than women with lower birth order. There was a significant heterogeneity; a random effect model was used (Fig 9).

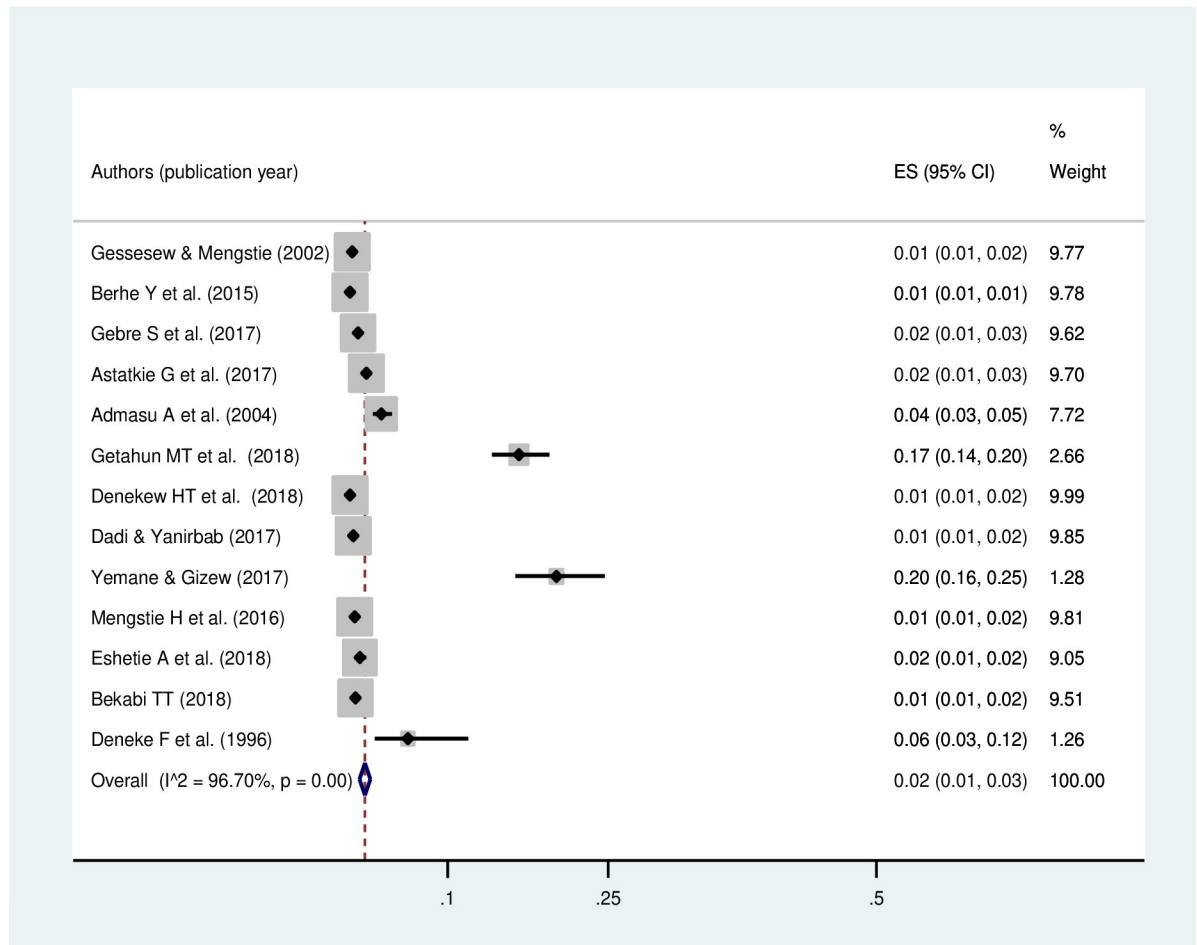


Fig 2. Pooled prevalence of uterine rupture in Ethiopia.

<https://doi.org/10.1371/journal.pone.0240675.g002>

Discussion

This systematic review and meta-analysis revealed that the prevalence of uterine rupture was 2% (95% CI: 1.99%, 3.01%) at national level. This was higher than findings of 40 Low and middle income countries (LMICs) review (1%) [44], nation-wide studies conducted in United Kingdom (0.2%) [45], United States (0.02%) [46], the Netherlands (0.059%) [12], WHO systematic review (0.31%) [5], Nigeria (1.2%) [47], Uganda (0.5%) [48] and 0.67% of uterine rupture in Senegal and Mali [49]. The possible difference might be due to the variation in population characteristics, setting and quality of health care service provision and utilization. Besides, this might be explained due to high burden of obstructed labor, injudicious obstetric interventions/manipulations, lack of antenatal care, poor access to emergency obstetric care [11, 50] and lower birth preparedness and complication readiness plan in Ethiopia [51]. Thus, access to facility and community-based maternal health care and reproductive health care service should be improved.

The findings of this meta-analysis also found that the highest prevalence of uterine rupture has occurred in Amhara region and the lowest was in Tigray region. The possible variation of the burden of uterine rupture might be explained by the maternal health care service utilization differences, mainly ANC visit might attribute to the difference in the prevalence of uterine

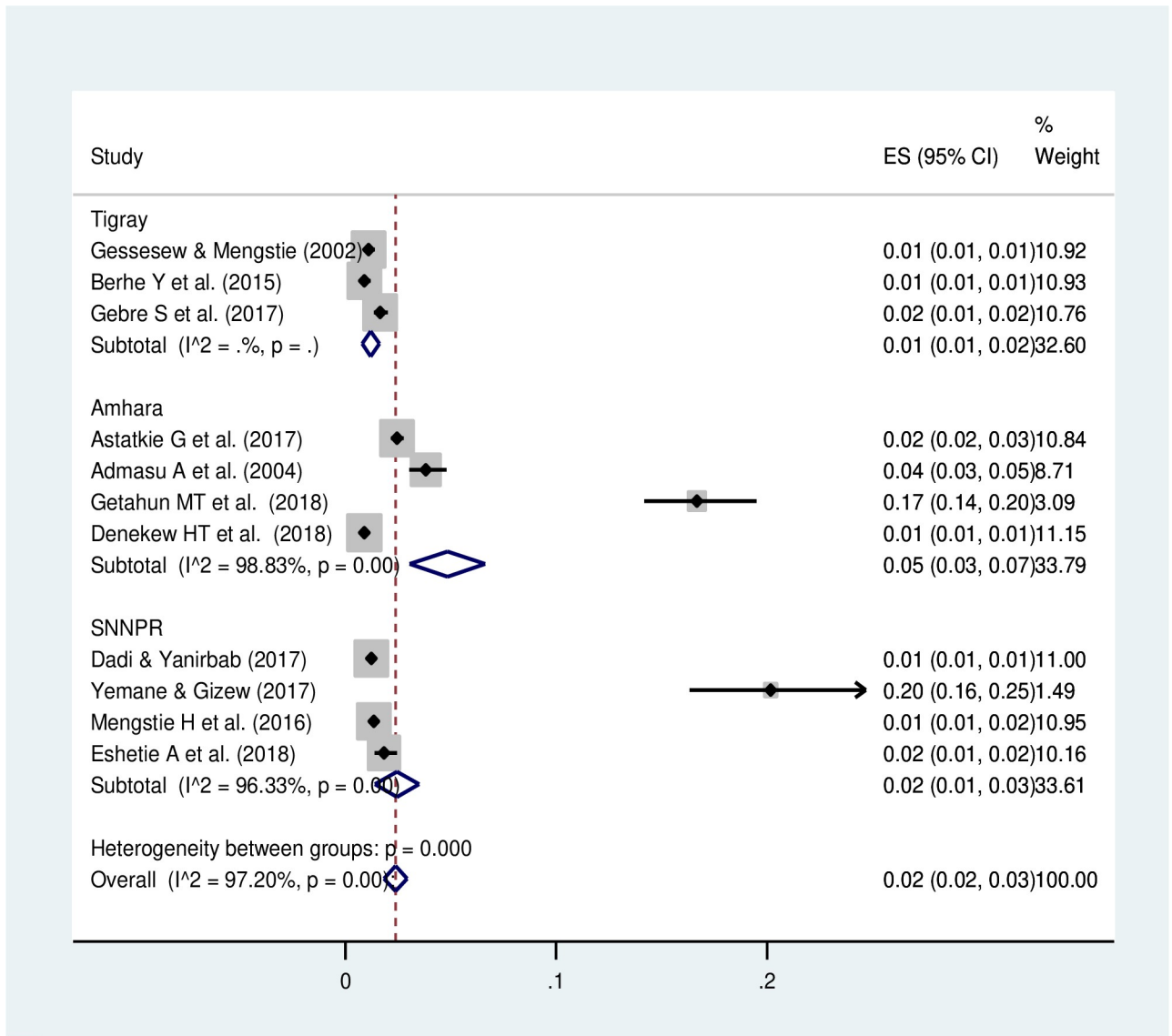


Fig 3. Subgroup analysis of uterine rupture by region in Ethiopia.

<https://doi.org/10.1371/journal.pone.0240675.g003>

rupture among these regions. Hence, a recent national-level study in Ethiopia from the Demographic health survey data supported that the lowest and highest utilization of ANC visit was spatially clustered in Amhara region (39.8%) and Tigray (90%), respectively, which is a known contributing factor for uterine rupture [52]. Beyond this, socio-demographic characteristics, lifestyle activities might be attributed to the decrement of uterine rupture.

This systematic review and meta-analysis revealed that previous cesarean delivery was the strongest predictor of uterine rupture, in which the risk of uterine rupture was increased about ten times among women who gave birth through a CS in previous delivery. This finding was supported by a study conducted in the United Kingdom [45], Sweden [53], Uganda [54], Senegal and Mali [49] which reported women with a previous CS were at increased risk of uterine rupture. A similar meta-analysis [55], WHO multicounty survey [56] and perinatology findings [57] also supported this finding. The possible reason for this might be that the probability

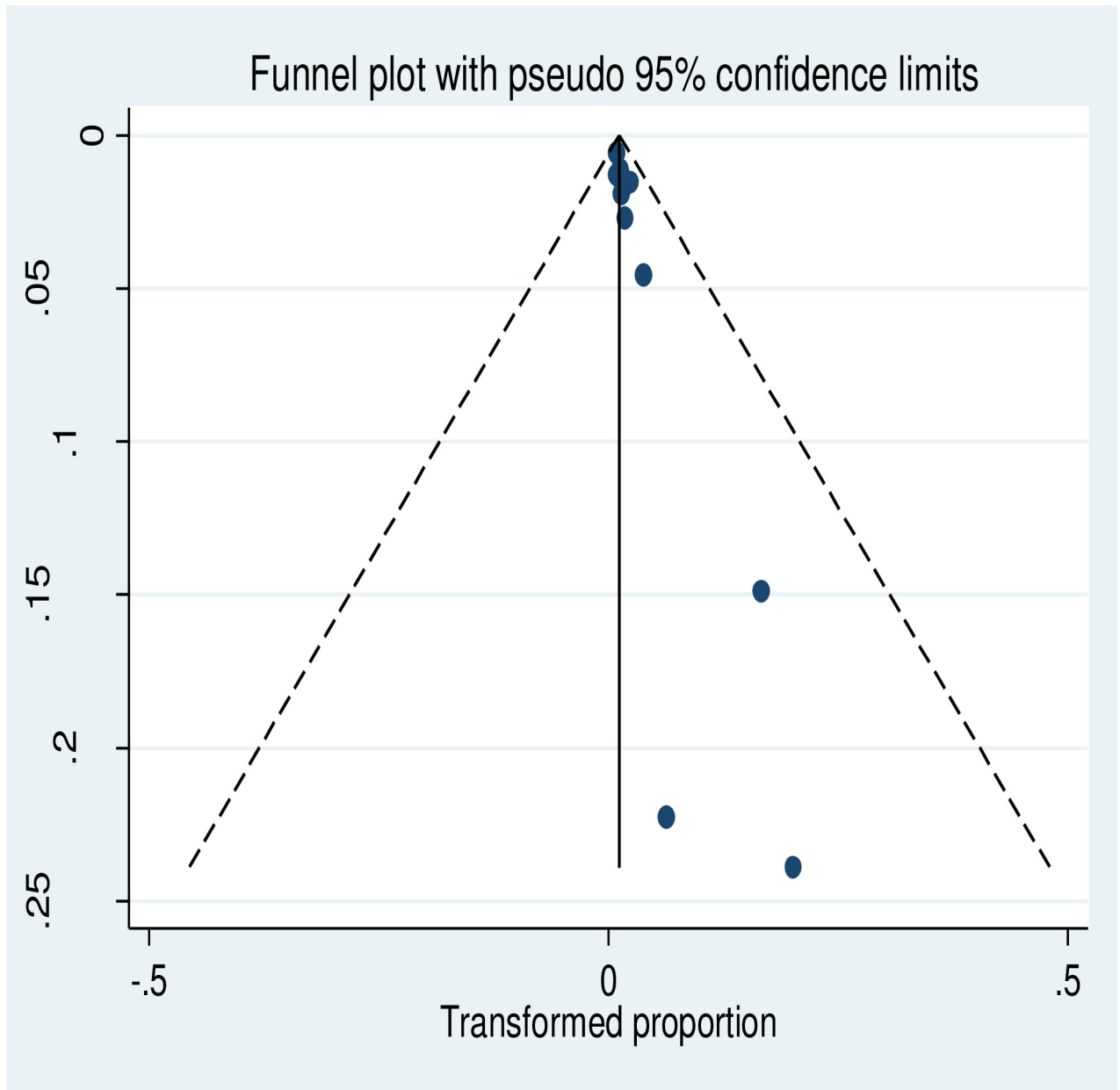


Fig 4. Funnel plot of the prevalence of uterine rupture in Ethiopia.

<https://doi.org/10.1371/journal.pone.0240675.g004>

of post-partum infection and thereby weakening of the strength of uterus due to previous scar. Additionally, low level of antenatal care service utilization might reduce success of trial of

Table 2. Subgroup analysis based on the type of study design.

Type of design	Number of studies includes	Prevalence (95% CI)	I ²
Cross-sectional	9	0.02 (95%CI:0.01,0.03)	70.2
Case control	3	0.04 (95%CI:0.02,0.05)	50.75
Cohort	1	0.02 (95%CI:0.01,0.02)	-

<https://doi.org/10.1371/journal.pone.0240675.t002>

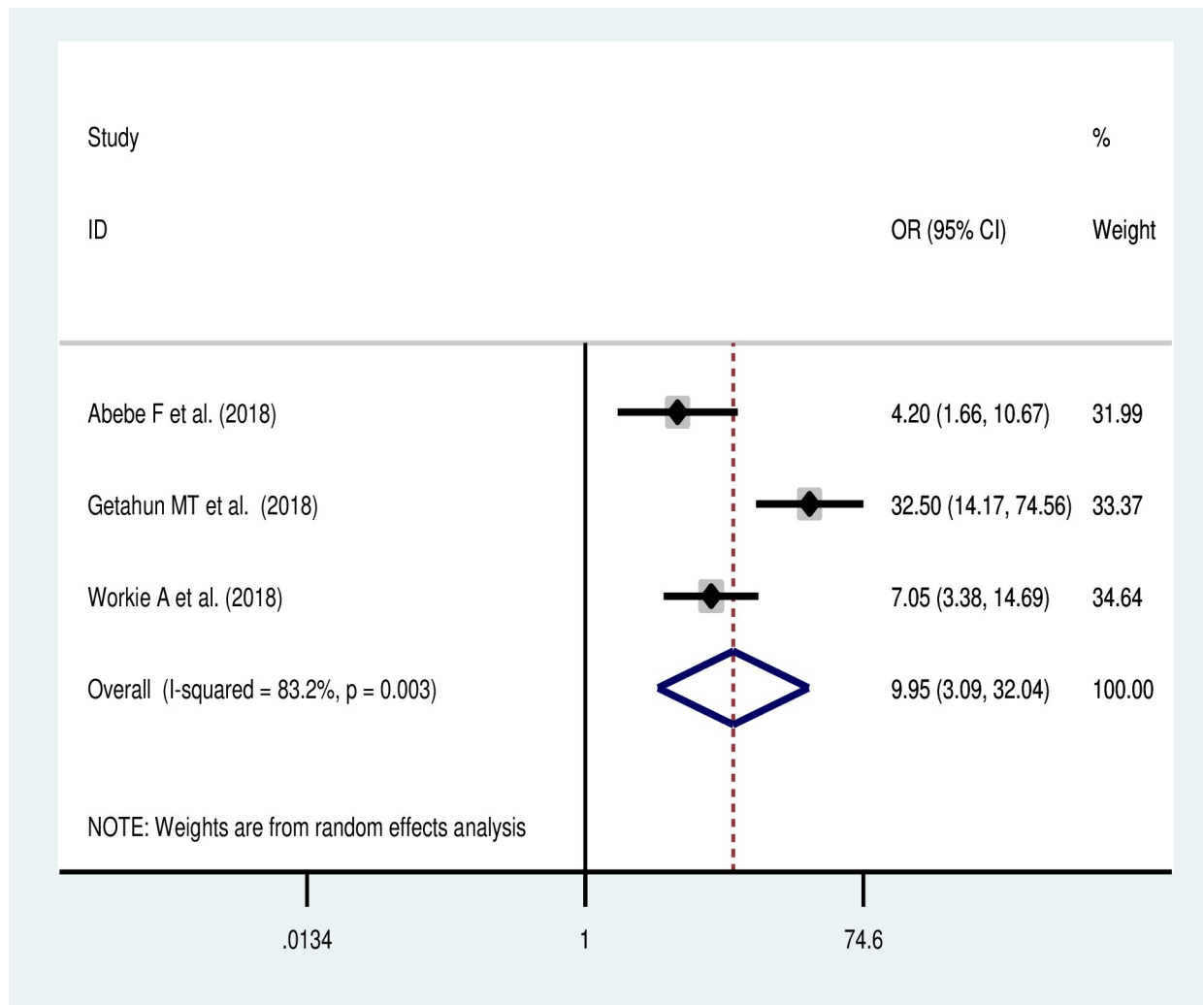


Fig 5. Forest plot on the association of previous CS with uterine rupture in Ethiopia.

<https://doi.org/10.1371/journal.pone.0240675.g005>

labor after cesarean delivery. Since, providers cannot get mothers to assess the criteria to allow trial of labor or elective cesarean delivery.

The caesarean section rate is currently rising globally, as countries move from lower to higher Human Development Index categories and those who had better access to antenatal services, the women are the most likely to undergo a caesarean delivery [58, 59]. In 2014, 54% of the world's population who had CS lived in urban areas and this percentage is expected to rise to 66% by 2050 [60]. The WHO considers CS rates of 5–15% to be the optimal range for better maternal and perinatal outcomes [61]. Higher rates may suggest improper selection of candidates such as induction and pre-labor CS, a common cause of an increasing rate of CS [62].

Therefore, changes should be made to the future [maternity care](#) and [birth](#) management to reduce the rate of CS, including promotion of optimal management and improving future birth outcomes as country incomes and [urbanization](#) increase. For this, audits need to be done on the appropriateness of CS using a Robson classification for CS [63]. Robson classification can be an important global standard to monitor and compare the appropriateness of

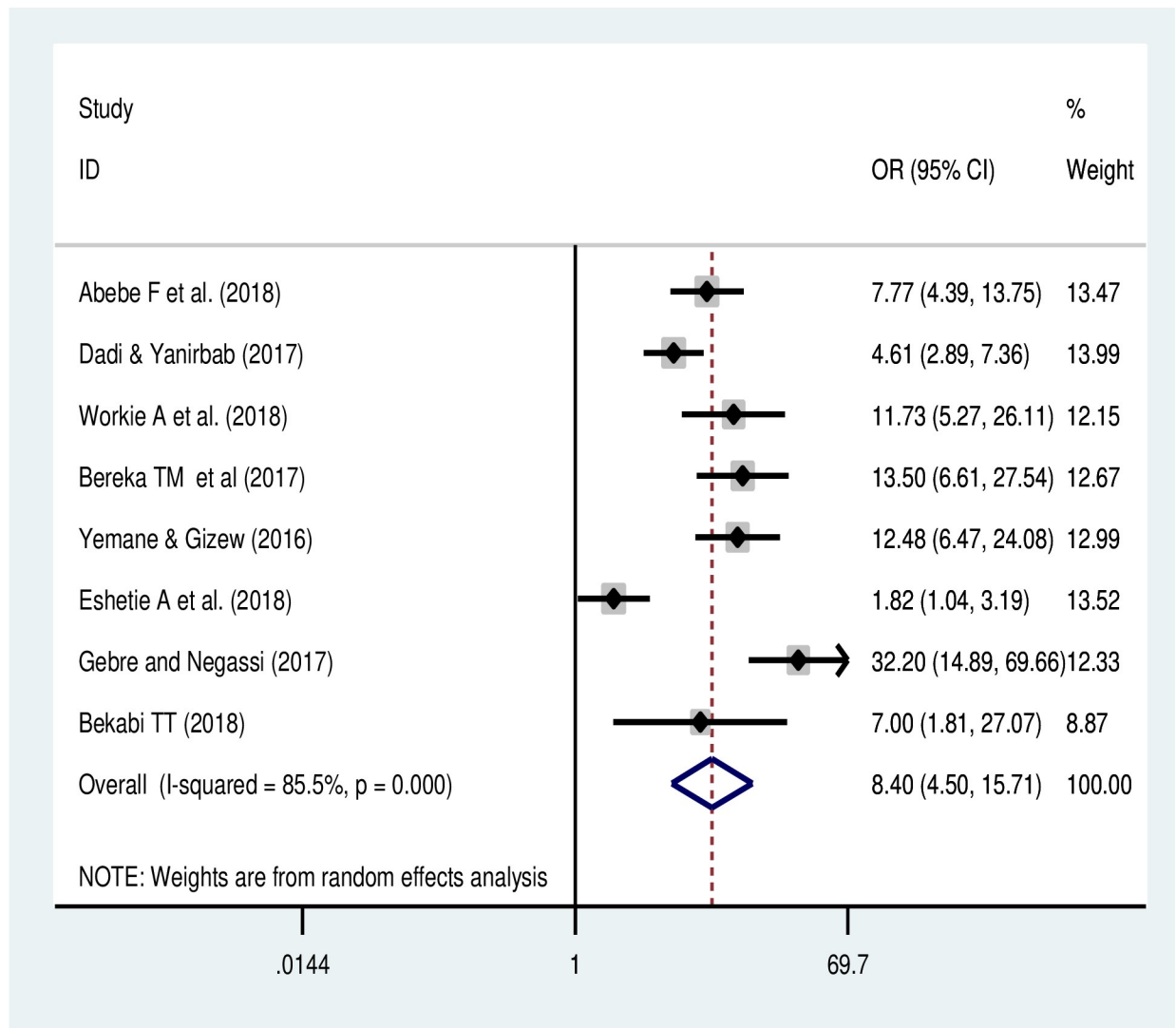


Fig 6. Effect of absence ANC visit on uterine rupture in Ethiopia.

<https://doi.org/10.1371/journal.pone.0240675.g006>

indications of CS within and between health-care facilities [62, 64]. Moreover, Sonographic lower upper segment (LUS) uterine scar thickness should be evaluated by clinicians in the pre-natal period or during trial of labor; a means of reduction of uterine rupture among women with previous CS. Hence, LUS thickness predicts uterine rupture in women with a uterine scar defect [65–69].

In addition, this systematic review and meta-analysis also found that absence of ANC visit was another important predictor of uterine rupture (8 folds higher). The finding was supported by studies done in Uganda [48, 54], Senegal and Mali [49]. This could be explained because of those women who had no ANC visit during pregnancy are less likely get skilled birth attendance earlier within the golden time due to poor decisions about when to seek care during childbirth [70, 71]. This might again result from delay in getting the care and obstructed labor; subsequently increase the risk of uterine rupture. In the present study, place of residence was another predictor that significantly associated with uterine rupture, rural residents were more likely to have uterine rupture. This might be due to lower level of maternal

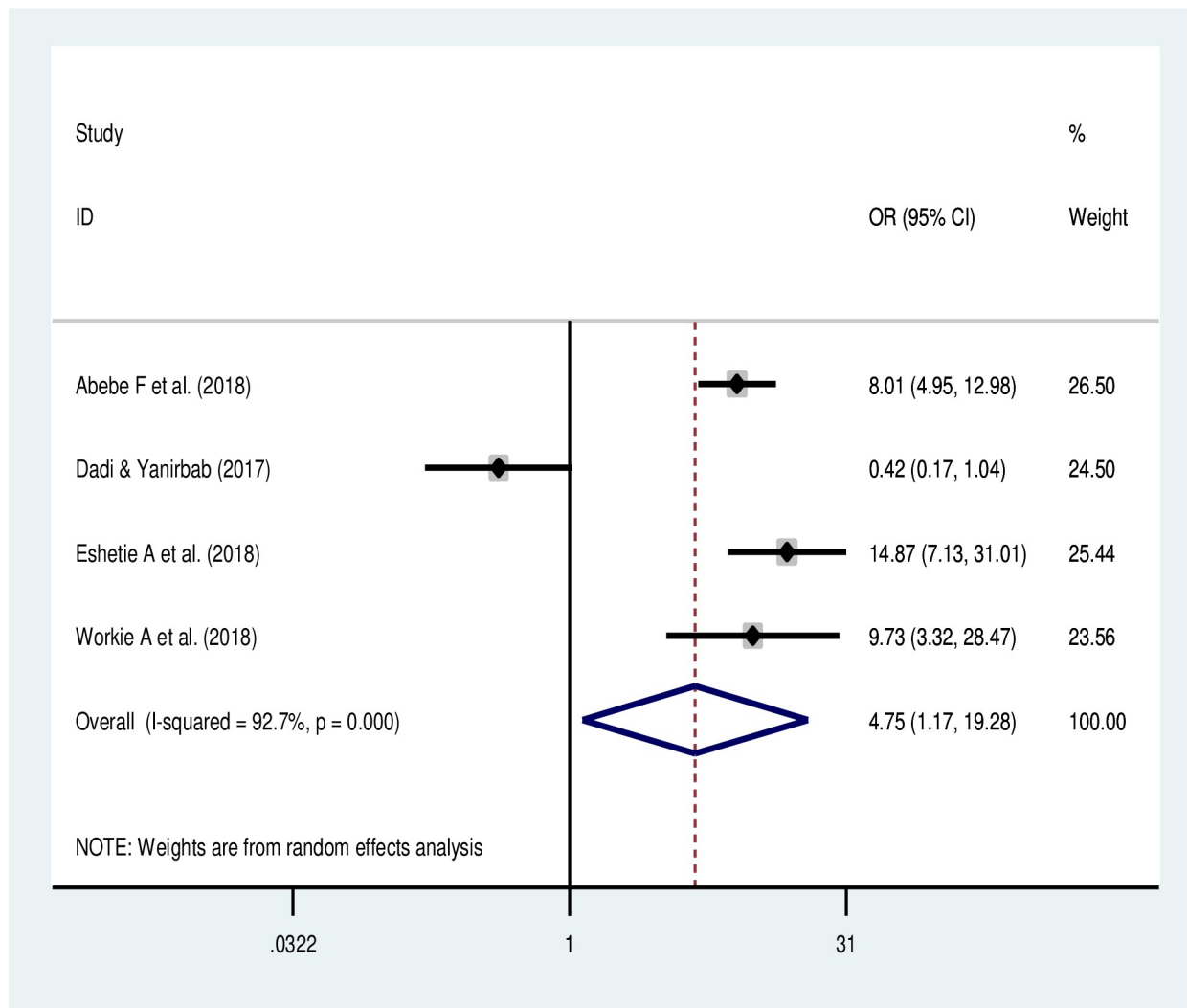


Fig 7. Forest plot of the association of residence on uterine rupture in Ethiopia.

<https://doi.org/10.1371/journal.pone.0240675.g007>

health service utilization, inadequate birth preparedness and complication readiness plan and delay to care mainly phase I and II. Hence, delay of getting emergency obstetric care increased severe maternal morbidities and mortality [72–75] and lack of an effective transfer system in LMICs remains a major predictor for uterine rupture [76]. This can also be due to failure of early referral of labor abnormalities at the health center level, resulting in a delay in early intervention leading to obstructed labor and substantially ruptured uterus. The implementation of a program of consultation, feedback and integration on the referral system between peripheral delivery units and referral centers should be emphasized to decrease the prevalence of uterine rupture and its associated maternal morbidity.

In this meta-analysis, grand multiparity was significantly associated with uterine rupture which is in line with other findings [49, 54, 77]. The possible reason for this might be the weakening of grand multipara uterus and unable to cope up the stress of induction-augmentation in case of prolonged obstructed labor with a tetanic uterine contraction, and trial of labor, subsequently results in uterine rupture. Hence, induction-augmentation with oxytocin and trial of labor is associated with uterine rupture among multiparas [55, 77]. This implies the need for

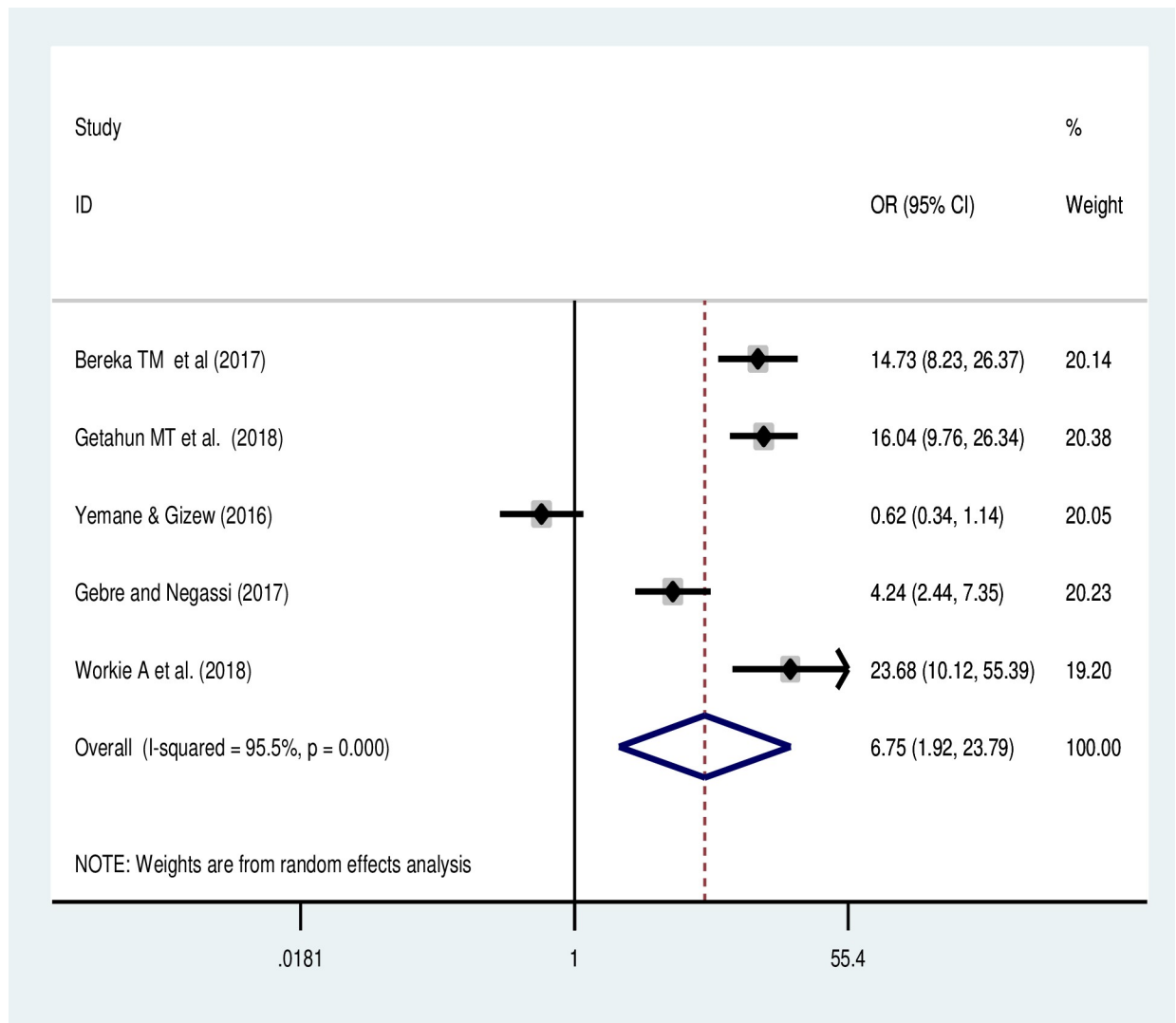


Fig 8. Forest plot of the association of obstructed labor and uterine rupture in Ethiopia.

<https://doi.org/10.1371/journal.pone.0240675.g008>

special care for high-risk mothers for early detection and management of complications during labor. Moreover, this systematic review and meta-analysis found that the risk of uterine rupture was significantly higher among women who had obstructed labor which is supported by other findings [5, 48, 49]. Obstructed labor is the leading cause of uterine rupture, contributing 83% to 93% cases of uterine rupture [43, 78]. This might be due to the fact that those women who have obstructed labor have a delay in seeking care with a hypertonic uterine contraction while accompanied with multiparity increases the chance of uterine rupture.

Limitations of the systematic review and meta-analysis

This systematic review and meta-analysis is the first national-level study done in Ethiopia and even in the LMICs on the pooled prevalence and predictors of uterine rupture. Despite, the results of this systematic review and meta-analysis should be interpreted based on some limitations. The highest heterogeneity of results among studies may be explained by heterogeneity in the characteristics of the studies, setting, and this may have led to insufficient statistical power

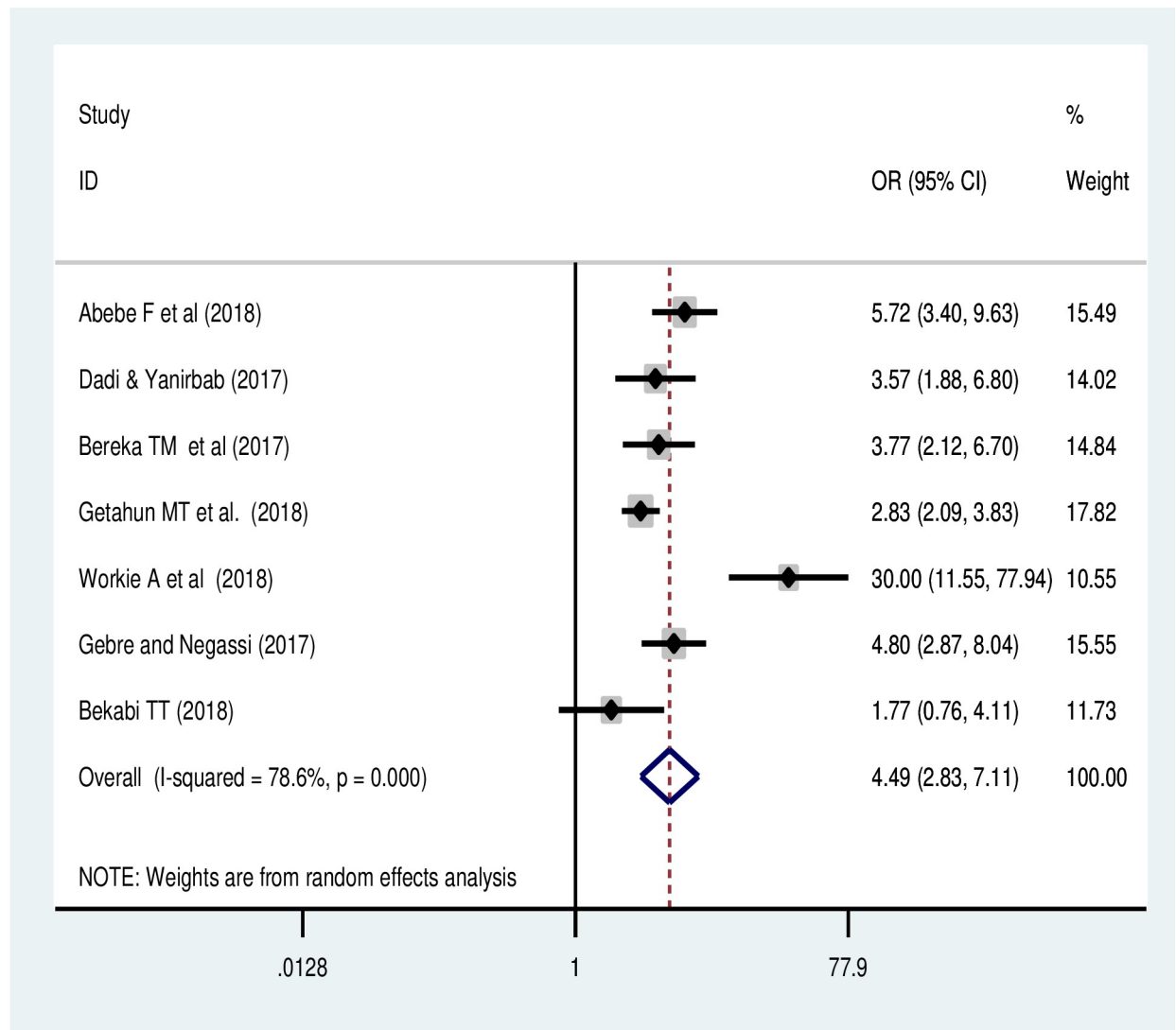


Fig 9. Forest plot of effect of parity on uterine rupture in Ethiopia: A meta-analysis.

<https://doi.org/10.1371/journal.pone.0240675.g009>

to detect statistically significant association. Thus, a meta-regression analysis revealed that there was no variation due to sample size, publication year and type of study design. This systematic review and meta-analysis is also unable to assess the effect of a number of previous caesarean deliveries and birth interval since the last caesarean section on the risk of uterine rupture. In addition, the studies included were conducted only in the five regions, which might reduce its representativeness for the country, and some studies with a small sample size might affect the estimation.

Conclusion

Uterine rupture is still high in Ethiopia. This meta-analysis revealed that previous cesarean delivery, absence of ANC visit, rural residence, obstructed labour and grand multiparity were predictors of uterine rupture. Therefore, proper auditing on the appropriateness of CS and the appropriate labour monitoring to reduce cesarean delivery should be an area of improvements

to decrease uterine rupture. Moreover, improving ANC visit, birth preparedness and complication readiness plan to reduce obstructed labour and family planning utilization are recommended to reduce the burden of uterine rupture.

Supporting information

S1 Checklist.

(DOC)

S1 Table. PRISMA checklist for the prevalence and predictors of uterine rupture among Ethiopian women in Ethiopia: A systematic review and meta-analysis.

(DOC)

S2 Table. Search string of PubMed on prevalence of uterine rupture in Ethiopia.

(DOCX)

S1 Fig. The sensitivity analysis prevalence of uterine rupture in Ethiopia.

(TIF)

Author Contributions

Conceptualization: Melaku Desta.

Data curation: Melaku Desta.

Formal analysis: Melaku Desta, Haile Amha.

Investigation: Haile Amha.

Methodology: Melaku Desta, Haile Amha, Keralem Anteneh Bishaw.

Software: Moges Agazhe Assemie.

Supervision: Moges Agazhe Assemie.

Visualization: Haile Amha, Keralem Anteneh Bishaw.

Writing – original draft: Melaku Desta, Haile Amha, Keralem Anteneh Bishaw.

Writing – review & editing: Melaku Desta, Fentahun Adane, Moges Agazhe Assemie, Getiye Dejenu Kibret, Nigus Bililign Yimer.

References

1. Kieser TFB K.E. A 10-year population-based study of uterine rupture. *Obstet Gynecol.*, 2002; 100 ((October (4)):pp. 749–53.
2. Ofir K SE, Levy A, Katz M, Mazor M. Uterine rupture: Risk factors and pregnancy outcome. *Am J Obstet Gynecol.* 2003; 189(4):1042–6. [https://doi.org/10.1067/s0002-9378\(03\)01052-4](https://doi.org/10.1067/s0002-9378(03)01052-4) PMID: 14586352
3. Saleem S, and Sumera Tahir. "Uterine Rupture in Pregnancy-One Year Experience." *APMC*,. 2012.
4. Gessesew A, Melese MM. Ruptured uterus-eight year retrospective analysis of causes and management outcome in Adigrat Hospital, Tigray Region, Ethiopia. *Ethiopian journal of health development.* 2002; 16(3):241–5.
5. Justus Hofmeyr G, Say L, Metin Gülmezoglu A. Systematic review: WHO systematic review of maternal mortality and morbidity: the prevalence of uterine rupture. *BJOG: An International Journal of Obstetrics & Gynaecology.* 2005; 112(9):1221–8. <https://doi.org/10.1111/j.1471-0528.2005.00725.x> PMID: 16101600
6. Turner M, Agnew G, Langan H. Uterine rupture and labour after a previous low transverse caesarean section. *BJOG: An International Journal of Obstetrics & Gynaecology.* 2006; 113(6):729–32. <https://doi.org/10.1111/j.1471-0528.2006.00940.x> PMID: 16709218

7. Landon MB, Hauth JC, Leveno KJ, Spong CY, Leindecker S, Varner MW, et al. Maternal and perinatal outcomes associated with a trial of labor after prior cesarean delivery. *New England Journal of Medicine*. 2004; 351(25):2581–9. <https://doi.org/10.1056/NEJMoa040405> PMID: 15598960
8. Thisted DL, Mortensen LH, Hvidman L, Rasmussen SC, Larsen T, Krebs L. Use of ICD-10 codes to monitor uterine rupture: validation of a national birth registry. *European Journal of Obstetrics & Gynecology and Reproductive Biology*. 2014; 173:23–8. <https://doi.org/10.1016/j.ejogrb.2013.10.033> PMID: 24287285
9. Bujold Emmanuel, and Gauthier Robert J. "Risk of uterine rupture associated with an interdelivery interval between 18 and 24 months." *Obstetrics & Gynecology* 115. 5 (2010): 1003–1006. <https://doi.org/10.1097/AOG.0b013e3181d992fb> PMID: 20410775
10. Al-Zirqi I, et al. Risk factors for complete uterine rupture. *American journal of obstetrics and gynecology* 2162 (2017): 165–e1. 2017. <https://doi.org/10.1016/j.ajog.2016.10.017> PMID: 27780708
11. Berhe Y, Wall LL. Uterine rupture in resource-poor countries. *Obstetrical & gynecological survey*. 2014; 69(11):695–707. <https://doi.org/10.1097/OGX.000000000000123> PMID: 25409161
12. Zwart J, Richters J, Öry F, De Vries J, Bloemenkamp K, Van Roosmalen J. Uterine rupture in the Netherlands: a nationwide population-based cohort study. *BJOG: An International Journal of Obstetrics & Gynaecology*. 2009; 116(8):1069–80. <https://doi.org/10.1111/j.1471-0528.2009.02136.x> PMID: 19515148
13. Fitzpatrick JJK K.E., Alfirevic Z., Spark P., Brocklehurst P., Knight M., Uterine rupture by intended mode of delivery in the UK: a national case–control study *PLoS Med*. 2012; 9((January (3)): p. e1001184. <https://doi.org/10.1371/journal.pmed.1001184> PMID: 22427745
14. Miller DA, Goodwin TM, Gherman RB, Paul RH. Intrapartum rupture of the unscarred uterus. *Obstetrics & Gynecology*. 1997; 89(5):671–3. [https://doi.org/10.1016/s0029-7844\(97\)00073-2](https://doi.org/10.1016/s0029-7844(97)00073-2) PMID: 9166298
15. Central Statistical Agency (CSA) [Ethiopia] and ICF. Ethiopia Demographic and Health Survey 2016. www.dhsprogram.com/data/dataset/Ethiopia_StandardDHS_2016.cfm?flag=1 2016.
16. Admassu A. Analysis of ruptured uterus in Debre Markos Hospital, Ethiopia. *East African medical journal*. 2004; 81(1):52–5. <https://doi.org/10.4314/eamj.v81i1.8796> PMID: 15080517
17. Wesson A, Assefa E. Maternal outcome following uterine rupture and its associated factors among mothers who delivered at Felege-Hiwot referral hospital, Amhara-Ethiopia *Int J Sci Rep*. 2019; 5(1):9–16.
18. Eshete A MS, Getachew F. Prevalence and factors associated with rupture of gravid uterus and foeto-maternal outcome: a one-year retrospective cohort study. *Ethiopian Medical Journal*. 2017; 56(1).
19. Bekabil T. Uterine Rupture among Women who Gave Birth at Nekemte Referral Hospital: Case Control Study. *Biol Med (Aligarh)*. 2018; 10(430):2.
20. Abebe F, Mannekulih E, Megerso A, Idris A, Legese T. Determinants of uterine rupture among cases of Adama city public and private hospitals, Oromia, Ethiopia: a case control study. *Reproductive health*. 2018; 15(1):161. <https://doi.org/10.1186/s12978-018-0606-4> PMID: 30261885
21. Dadi TL, Yarinbab TE. Estimates of Uterine Rupture Bad Outcomes Using Propensity Score and Determinants of Uterine Rupture in Mizan-Tepi University Teaching Hospital: Case Control Study. *Journal of pregnancy*. 2017; 2017:6517015. <https://doi.org/10.1155/2017/6517015> PMID: 28770111
22. Workie A et al. Determinants of uterine rupture in Dessie Referral Hospital, North East Ethiopia, 2016: case control design *Int J Reprod Contracept Obstet Gynecol*. 2018; 7(5):1712–7.
23. Yemane Y GW. Assessment of the Associated Factors, Management and Complications of Uterine Rupture at Mizan-Tepi University Teaching Hospital, Mizan-Aman Town, Bench-Maji Zone, Snnprs, South West Ethiopia, 2016/17: A Case Control Study *Health Sci J* 2017; 11(3).
24. Gebre S NA. Risk Factors for Uterine Rupture in Suhul General Hospital Case Control Study. *Electronic J Biol*. 2017; 13(3).
25. Getahun WT, Solomon AA, Kassie FY, Kasaye HK. Uterine rupture among mothers admitted for obstetrics care and associated factors in referral hospitals of Amhara regional state, institution-based cross-sectional study, Northern Ethiopia, 2013–2017. 2018; 13(12):e0208470. <https://doi.org/10.1371/journal.pone.0208470> PMID: 30513120
26. Moher D et al. Preferred reporting items for systematic review and meta-analysis protocols (PRISMA-P) 2015 statement. *Systematic reviews*. 2015; 4(1). <https://doi.org/10.1186/2046-4053-4-1> PMID: 25554246
27. Singer M, Deutschman CS, Seymour CW, Shankar-Hari M, Annane D, Bauer M, et al. The third international consensus definitions for sepsis and septic shock (Sepsis-3). *Jama*. 2016; 315(8):801–10. <https://doi.org/10.1001/jama.2016.0287> PMID: 26903338
28. Egger M SG, Schneider M, Minder C. Bias in meta-analysis detected by a simple, graphical test. *BMJ*. 1997; 315(7109):629–34. <https://doi.org/10.1136/bmj.315.7109.629> PMID: 9310563

29. Begg CB MM. Operating characteristics of a rank correlation test for publication bias. *Biometrics*. 1994; 50(4):1088–101. PMID: [7786990](#)
30. Higgins JP TS, Deeks JJ, Altman DG. Measuring inconsistency in meta-analyses. *BMJ*. 2003; 327(7414):557. <https://doi.org/10.1136/bmj.327.7414.557> PMID: [12958120](#)
31. Nyaga VN, Arbyn M, Aerts M. Metaprop: a Stata command to perform meta-analysis of binomial data. *Archives of Public Health*. 2014; 72(1):39. <https://doi.org/10.1186/2049-3258-72-39> PMID: [25810908](#)
32. Deeks JJ, Higgins JP, Altman DG. Analysing data and undertaking meta-analyses. *Cochrane handbook for systematic reviews of interventions*. 2008:241–84.
33. Chamiso B. Rupture of pregnant uterus in Shashemene General Hospital, south Shoa, Ethiopia (a three year study of 57 cases). *Ethiopian medical journal*. 1995; 33(4):251–7. PMID: [8674491](#)
34. Sisay Woldeyes W, Amenu D, Segni H. Uterine Rupture in Pregnancy following Fall from a Motorcycle: A Horrid Accident in Pregnancy—A Case Report and Review of the Literature. *Case reports in obstetrics and gynecology*. 2015; 2015:715180. <https://doi.org/10.1155/2015/715180> PMID: [26576307](#)
35. Kelly J, Fekadu S, Lancashire RJ, Poovan P, Redito A. A follow-up of repair of ruptured uterus in Ethiopia. *Journal of obstetrics and gynaecology: the journal of the Institute of Obstetrics and Gynaecology*. 1998; 18(1):50–2. <https://doi.org/10.1080/01443619868280> PMID: [15512003](#)
36. Kelly J. Primary repair of obstetric uterine rupture can be safely undertaken by non-specialist clinicians in rural Ethiopia: a case series of 386 women. *BJOG: an international journal of obstetrics and gynaecology*. 2013; 120(8):1029. <https://doi.org/10.1111/1471-0528.12267> PMID: [23759091](#)
37. Marie Bereka T, Mulat Aweke A, Eshetie Wondie T. Associated Factors and Outcome of Uterine Rupture at Suhul General Hospital, Shire Town, North West Tigray, Ethiopia 2016: A Case-Control Study. *Obstetrics and gynecology international*. 2017;2017. <https://doi.org/10.1155/2017/8272786> PMID: [29403533](#)
38. Ahmed DM, Mengistu TS, Endalamaw AG. Incidence and factors associated with outcomes of uterine rupture among women delivered at Felegehiwot referral hospital, Bahir Dar, Ethiopia: cross sectional study. *BMC pregnancy and childbirth*. 2018; 18(1):447. <https://doi.org/10.1186/s12884-018-2083-8> PMID: [30445936](#)
39. Astatikie G, Limenih MA, Kebede M. Maternal and fetal outcomes of uterine rupture and factors associated with maternal death secondary to uterine rupture. *BMC pregnancy and childbirth*. 2017; 17(1):117. <https://doi.org/10.1186/s12884-017-1302-z> PMID: [28403833](#)
40. Deneke HT, Ahmed DM, Mengistu TS, Endalamaw AG. Incidence and factors associated with outcomes of uterine rupture among women delivered at Felegehiwot referral hospital, Bahir Dar, Ethiopia: cross sectional study. *PLoS One*. 2018; 18(1):447.
41. Mengistie H, Amenu D, Hiko D. Maternal and perinatal outcomes of uterine rupture patients among mothers who delivered at mizan aman general hospital, SNNPR, south west Ethiopia; a five year retrospective hospital based study. *MOJ Womens Health*. 2016; 2(1):13–23. <https://doi.org/10.15406/mojwh.2016.02.00019>
42. Berhe Y, Gidey H, Wall LL. Uterine rupture in Mekelle, northern Ethiopia, between 2009 and 2013. *International journal of gynaecology and obstetrics: the official organ of the International Federation of Gynaecology and Obstetrics*. 2015; 130(2):153–6.
43. Deneke F. Ruptured uterus in Ethiopia. *International journal of gynaecology and obstetrics: the official organ of the International Federation of Gynaecology and Obstetrics*. 1996; 54(2):175–6. [https://doi.org/10.1016/0020-7292\(96\)02700-2](https://doi.org/10.1016/0020-7292(96)02700-2) PMID: [9236319](#)
44. Bailey PE, Andualem W, Brun M, Freedman L, Gbangbade S, Kante M, et al. Institutional maternal and perinatal deaths: a review of 40 low and middle income countries. *BMC Pregnancy Childbirth*. 2017; 17(1):295. <https://doi.org/10.1186/s12884-017-1479-1> PMID: [28882128](#)
45. Fitzpatrick KE, Kurinczuk JJ, Alfirevic Z, Spark P, Brocklehurst P, Knight M. Uterine rupture by intended mode of delivery in the UK: a national case-control study. *PLoS medicine*. 2012; 9(3):e1001184. <https://doi.org/10.1371/journal.pmed.1001184> PMID: [22427745](#)
46. Vilchez G, Nazeer S, Kumar K, Warren M, Dai J, Sokol RJ. Contemporary epidemiology and novel predictors of uterine rupture: a nationwide population-based study. *Archives of gynecology and obstetrics*. 2017; 296(5):869–75. <https://doi.org/10.1007/s00404-017-4508-4> PMID: [28864930](#)
47. Umeora UO, Ejikeme BN, Egwuatu VE. Contribution of ruptured uterus to maternal mortality in rural south eastern Nigeria. *Tropical Journal of Obstetrics and Gynaecology*. 2005; 22(2):184–8.
48. Kadowa I. Ruptured uterus in rural Uganda: prevalence, predisposing factors and outcomes. *Singapore medical journal*. 2010; 51(1):35. PMID: [20200773](#)
49. Delafield R, Pirkle CM, Dumont A. Predictors of uterine rupture in a large sample of women in Senegal and Mali: cross-sectional analysis of QUARITE trial data. *BMC pregnancy and childbirth*. 2018; 18(1):432. <https://doi.org/10.1186/s12884-018-2064-y> PMID: [30382820](#)

50. Omole-Ohonsi A, Attah R. Risk factors for ruptured uterus in a developing country. *Gynecol Obstetric*. 2011; 1(102):2161–0932. 1000102.
51. Berhe AK, Muche AA, Fekadu GA, Kassa GM. Birth preparedness and complication readiness among pregnant women in Ethiopia: a systematic review and Meta-analysis. *Reproductive health*. 2018; 15(1):182. <https://doi.org/10.1186/s12978-018-0624-2> PMID: 30373598
52. Yeneneh A, Alemu K, Dadi AF, Alamirrew A. Spatial distribution of antenatal care utilization and associated factors in Ethiopia: evidence from Ethiopian demographic health surveys. *BMC pregnancy and childbirth*. 2018; 18(1):242. <https://doi.org/10.1186/s12884-018-1874-2> PMID: 29914403
53. Kaczmarczyk M, Sparén P, Terry P, Chattingius S. Risk factors for uterine rupture and neonatal consequences of uterine rupture: a population-based study of successive pregnancies in Sweden. *BJOG: An International Journal of Obstetrics & Gynaecology*. 2007; 114(10):1208–14. <https://doi.org/10.1111/j.1471-0528.2007.01484.x> PMID: 17877673
54. Mukasa PK, Kabakyenga J, Senkungu JK, Ngonzi J, Kyalimpa M, Roosmalen VJ. Uterine rupture in a teaching hospital in Mbarara, western Uganda, unmatched case-control study. *Reproductive health*. 2013; 10(1):29.
55. Guise J-M, McDonagh MS, Osterweil P, Nygren P, Chan BK, Helfand M. Systematic review of the incidence and consequences of uterine rupture in women with previous caesarean section. *Bmj*. 2004; 329(7456):19. <https://doi.org/10.1136/bmj.329.7456.19> PMID: 15231616
56. Motomura K, Ganchimeg T, Nagata C, Ota E, Vogel JP, Betran AP, et al. Incidence and outcomes of uterine rupture among women with prior caesarean section: WHO Multicountry Survey on Maternal and Newborn Health. *Scientific reports*. 2017; 7:44093. <https://doi.org/10.1038/srep44093> PMID: 28281576
57. Landon MB, editor *Predicting uterine rupture in women undergoing trial of labor after prior cesarean delivery*. Seminars in perinatology; 2010: Elsevier.
58. Leone T, Padmadas SS, Matthews Z. Community factors affecting rising caesarean section rates in developing countries: an analysis of six countries. *Social science & medicine*. 2008; 67(8):1236–46. <https://doi.org/10.1016/j.socscimed.2008.06.032> PMID: 18657345
59. Roberts CL, Nippita TA. International caesarean section rates: the rising tide. *The Lancet Global Health*. 2015; 3(5):e241–e2. [https://doi.org/10.1016/S2214-109X\(15\)70111-7](https://doi.org/10.1016/S2214-109X(15)70111-7) PMID: 25866356
60. Nations U. *World urbanization prospects: The 2014 revision, highlights*. Department of Economic and Social Affairs. 2014.
61. Organization WH. *Appropriate technology for birth*. *Lancet*. 1985; 2:436–7. PMID: 2863457
62. Vogel JP, Betrán AP, Vindevochel N, Souza JP, Torloni MR, Zhang J, et al. Use of the Robson classification to assess caesarean section trends in 21 countries: a secondary analysis of two WHO multicountry surveys. *The Lancet Global Health*. 2015; 3(5):e260–e70. [https://doi.org/10.1016/S2214-109X\(15\)70094-X](https://doi.org/10.1016/S2214-109X(15)70094-X) PMID: 25866355
63. Farine D, Shepherd D, Robson M, Gagnon R, Hudon L, Basso M, et al. Classification of caesarean sections in Canada: the modified robson criteria. *Journal of Obstetrics and Gynaecology Canada*. 2012; 34(10):976–9. [https://doi.org/10.1016/S1701-2163\(16\)35412-3](https://doi.org/10.1016/S1701-2163(16)35412-3) PMID: 23067954
64. Robson M, Murphy M, Byrne F. Quality assurance: The 10-Group Classification System (Robson classification), induction of labor, and cesarean delivery. *International Journal of Gynecology & Obstetrics*. 2015; 131:S23–S7.
65. Jastrow N, Chaillet N, Roberge S, Morency A-M, Lacasse Y, Bujold E. Sonographic Lower Uterine Segment Thickness and Risk of Uterine Scar Defect: A Systematic Review. *Journal of Obstetrics and Gynaecology Canada*. 2010; 32(4):321–7. [https://doi.org/10.1016/S1701-2163\(16\)34475-9](https://doi.org/10.1016/S1701-2163(16)34475-9) PMID: 20500938
66. Paquette K, Markey S, Roberge S, Girard M, Bujold E, Demers S. First and Third Trimester Uterine Scar Thickness in Women With Previous Caesarean: A Prospective Comparative Study. *Journal of Obstetrics and Gynaecology Canada*. 2019; 41(1):59–63. <https://doi.org/10.1016/j.jogc.2018.02.020> PMID: 30316720
67. Jastrow N, Demers S, Chaillet N, Girard M, Gauthier RJ, Pasquier J-C, et al. Lower uterine segment thickness to prevent uterine rupture and adverse perinatal outcomes: a multicenter prospective study. *American Journal of Obstetrics and Gynecology*. 2016; 215(5):604.e1–e6. <https://doi.org/10.1016/j.ajog.2016.06.018> PMID: 27342045
68. Bujold E, Jastrow N, Simoneau J, Brunet S, Gauthier RJ. Prediction of complete uterine rupture by sonographic evaluation of the lower uterine segment. *American Journal of Obstetrics and Gynecology*. 2009; 201(3):320.e1–e6. <https://doi.org/10.1016/j.ajog.2009.06.014> PMID: 19733288
69. KOK ICW N., OPMEER B. C., DE GRAAF I. M., MOL B. W., and PAJKRT E. Sonographic measurement of lower uterine segment thickness to predict uterine rupture during a trial of labor in women with

- previous Cesarean section: a meta-analysis. *Ultrasound Obstet Gynecol* 2013; 42:132–9. <https://doi.org/10.1002/uog.12479> PMID: 23576473
70. Gabrysch S, Campbell OM. Still too far to walk: literature review of the determinants of delivery service use. *BMC pregnancy and childbirth*. 2009; 9(1):34. <https://doi.org/10.1186/1471-2393-9-34> PMID: 19671156
 71. Berhe Y, Wall LL. Uterine rupture in resource-poor countries. *Obstetrical & gynecological survey*. 2014; 69(11):695–707. <https://doi.org/10.1097/OGX.000000000000123> PMID: 25409161
 72. Pacagnella RC, Cecatti JG, Osis MJ, Souza JP. The role of delays in severe maternal morbidity and mortality: expanding the conceptual framework. *Reproductive health matters*. 2012; 20(39):155–63. [https://doi.org/10.1016/S0968-8080\(12\)39601-8](https://doi.org/10.1016/S0968-8080(12)39601-8) PMID: 22789093
 73. Chavane L, Dgedge M, Degomme O, Loquiha O, Aerts M, Temmerman M. The magnitude and factors related to facility-based maternal mortality in Mozambique. *Journal of Obstetrics and Gynaecology*. 2017; 37(4):464–70. <https://doi.org/10.1080/01443615.2016.1256968> PMID: 28421900
 74. Barnes-Josiah D, Myntti C, Augustin A. The “three delays” as a framework for examining maternal mortality in Haiti. *Social science & medicine*. 1998; 46(8):981–93. [https://doi.org/10.1016/s0277-9536\(97\)10018-1](https://doi.org/10.1016/s0277-9536(97)10018-1) PMID: 9579750
 75. Barkat A, Rahman M, Bose ML, Com M, Akhter S. Modelling the first two delays of the "three-delays model" for emergency obstetric care in Bangladesh: a choice model approach. *Journal of Health and Population in Developing Countries*. 1997; 1(1):57–67. <https://doi.org/10.12927/whp..17486> PMID: 12293261
 76. Balde MD, Bastert G. Decrease in uterine rupture in Conakry, Guinea by improvements in transfer management. *International Journal of Gynecology & Obstetrics*. 1990; 31(1):21–4. [https://doi.org/10.1016/0020-7292\(90\)90176-I](https://doi.org/10.1016/0020-7292(90)90176-I) PMID: 1968012
 77. Thisted DLA, Mortensen LH, Krebs L. Uterine rupture without previous caesarean delivery: a population-based cohort study. *European Journal of Obstetrics & Gynecology and Reproductive Biology*. 2015; 195:151–5. <https://doi.org/10.1016/j.ejogrb.2015.10.013> PMID: 26544026
 78. Dhaifalah I, Santavy J, Fingerova H. Uterine rupture during pregnancy and delivery among women attending the Al-Tithawra Hospital in Sana'a City Yemen Republic. *Biomed Pap Med Fac Univ Palacky Olomouc Czech Repub*. 2006; 150(2):279–83. <https://doi.org/10.5507/bp.2006.042> PMID: 17426793