



Association of Vitamin D Levels With Kidney Volume in Autosomal Dominant Polycystic Kidney Disease (ADPKD)

Larissa Collis Vendramini, Maria Aparecida Dalboni, José Tarcisio Giffoni de Carvalho Jr., Marcelo Costa Batista, José Luiz Nishiura and Ita Pfeferman Heilberg*

Nephrology Division, Universidade Federal de São Paulo, São Paulo, Brazil

OPEN ACCESS

Edited by:

Robert P. Woroniecki,
Stony Brook Children's Hospital,
United States

Reviewed by:

Debasish Banerjee,
St George's, University of London,
United Kingdom
Divya Bhatia,
Cornell University, United States

*Correspondence:

Ita Pfeferman Heilberg
ita.heilberg@gmail.com

Specialty section:

This article was submitted to
Nephrology,
a section of the journal
Frontiers in Medicine

Received: 13 September 2018

Accepted: 07 May 2019

Published: 24 May 2019

Citation:

Vendramini LC, Dalboni MA, de Carvalho JTG Jr, Batista MC, Nishiura JL and Heilberg IP (2019) Association of Vitamin D Levels With Kidney Volume in Autosomal Dominant Polycystic Kidney Disease (ADPKD). *Front. Med.* 6:112. doi: 10.3389/fmed.2019.00112

Vitamin D possesses renoprotective effects beyond mineral metabolism, potentially reducing arterial blood pressure and inflammation and vitamin D enzymes (CYP24A1 and CYP27B1) as well as vitamin D receptor (VDR) contribute to its homeostasis. In the present study, we aimed to determine vitamin D association with kidney volume, blood pressure parameters and inflammatory markers in ADPKD. This cross-sectional study, conducted from August 2011 through May 2016, evaluated 25(OH)D, 1,25(OH)2D and other hormonal/biochemical serum and urinary parameters, inflammatory markers and monocyte expression of VDR, CYP24A1, CYP27B1 in 74 ADPKD patients. The height-adjusted total kidney volume (htTKV) was determined by MRI and blood pressure (BP) measured through 24-h ambulatory BP monitoring (ABPM). Vitamin D insufficiency was present in 62% of patients and CYP24A1 was overexpressed in this group, raising a hypothesis of 25(OH)D increased catabolism. Serum 25(OH)D levels and VDR expression were negatively correlated with htTKV as was VDR with IL-6, IL-10, CRP, and NFκB. A multiple linear regression analysis with htTKV as dependent variable, including hypertension, CRP, eGFR, age, time since diagnosis, VDR, and 25(OH)D adjusted for season of the year showed that only the first three parameters were independent predictors of the former. There has been no association of serum 25(OH)D and VDR expression with ABPM parameters. Present findings suggested that low levels of serum 25(OH)D and VDR expression are associated with a higher kidney volume in ADPKD patients, but do not represent independent risk factors for htTKV.

Keywords: vitamin D, hypertension, inflammatory markers, VDR, total kidney volume (TKV)

INTRODUCTION

The increase in total kidney volume (TKV) is a prognostic biomarker of decreased renal function in Autosomal Dominant Polycystic Kidney Disease (ADPKD) (1–3). Hypertension, which occurs prior to loss of kidney function in 60% of ADPKD patients, represents a significant independent risk factor for progression of the disease, contributing to cyst expansion and intrarenal ischemia hence activating intrarenal renin-angiotensin-system (RAS) (4–6). Besides genetic factors, predictors that may lead to cyst growth and increase in TKV in ADPKD also include male gender, high salt and protein intake, caffeine consumption, level of fluid intake, gross hematuria,

nephrolithiasis, proteinuria among others (7–13). Inflammation, present even in initial stages of the disease may also influence the progression of ADPKD (14). Vitamin D₃ (cholecalciferol) is synthesized in human skin from the conversion of 7,8-dehydrocholesterol by UV radiation and then hydroxylated in the liver to give origin to the circulating form 25-hydroxyvitamin D₃ [25(OH)D or calcidiol]. The hormonal active metabolite of vitamin D, 1,25-dihydroxyvitamin D₃ [1,25(OH)₂D or calcitriol], is further produced in the kidneys through the enzyme CYP27B1 (1- α hydroxylase) and functions as the ligand for the nuclear vitamin D receptor (VDR) (15). Both forms of vitamin D are catabolized by CYP24A1. Vitamin D regulates the expression of pro-inflammatory genes and might act as an anti-inflammatory hormone (16). In an experimental non-orthologous model of PKD, cholecalciferol supplementation was capable to reduce proteinuria and interstitial inflammation (17). Nevertheless, few human studies focused on the relationship of vitamin D with BP and inflammation in ADPKD (18) and its impact on predictors of disease progression remains unknown. We aimed to investigate vitamin D status, serum levels of 1,25 (OH)₂D, the expression of regulatory enzymes [CYP24A1 and CYP27B1] and VDR and their association with BP, inflammatory markers and TKV in ADPKD patients.

MATERIALS AND METHODS

Ninety eligible participants with ADPKD confirmed by positive family history and renal cysts according to ultrasonographic diagnostic criteria by Pei et al. (19), were recruited from the outpatient Polycystic Kidney Disease Unit of the Universidade Federal de São Paulo, since August 2011 through May 2016, to participate in this study. Exclusion criteria were age <18 years old, serum calcium >10.5 mg/dL and current/past use of calcium or vitamin D. The reason for excluding users of vitamin D supplements or hypercalcemic patients relied on the necessity of vitamin D supplementation foreseen for the patients exhibiting hypovitaminosis D, as a further planned intervention study, which is still ongoing. Hypertension was defined by either measurements upon enrollment, history of hypertension or use of antihypertensive medications. Body weight, height and waist circumference were obtained and Body mass index (BMI) calculated. Body fat composition was assessed by bioelectrical impedance analysis (BIA 101 Quantum, RJL Systems, Detroit, MI). Consumption of macronutrients, vitamin D, calcium, phosphorus and caffeine were assessed through a 24-h dietary recall and daily intakes were calculated as previously described (10). After this initial clinical evaluation, enrolled patients were scheduled for one blood sample drawn following an overnight fast and a 24-h urine collection, obtained during the preceding day. Subsequently, patients were scheduled to undertake a 24-h ambulatory blood pressure monitoring (ABPM) and a magnetic resonance imaging (MRI) scan to determine total kidney volume (TKV). Patients were divided in vitamin D-sufficient (>30 ng/mL) and vitamin D-insufficient (<30 ng/mL) groups for comparisons. The study was reviewed and approved by the Ethics Advisory Committee of the

Universidade Federal de São Paulo, and each patient signed the informed consent form.

Ambulatory Blood Pressure Monitoring (ABPM)

ABPM was recorded using the automatic oscillometric monitor (Spacelabs 90207, Spacelabs Inc., Redmond, USA) with patients taking anti-hypertensive medications. Reference normal values were taken from guidelines and a reduction in BP < 10% at night-time was considered as non-dipping (20).

Imaging Protocol

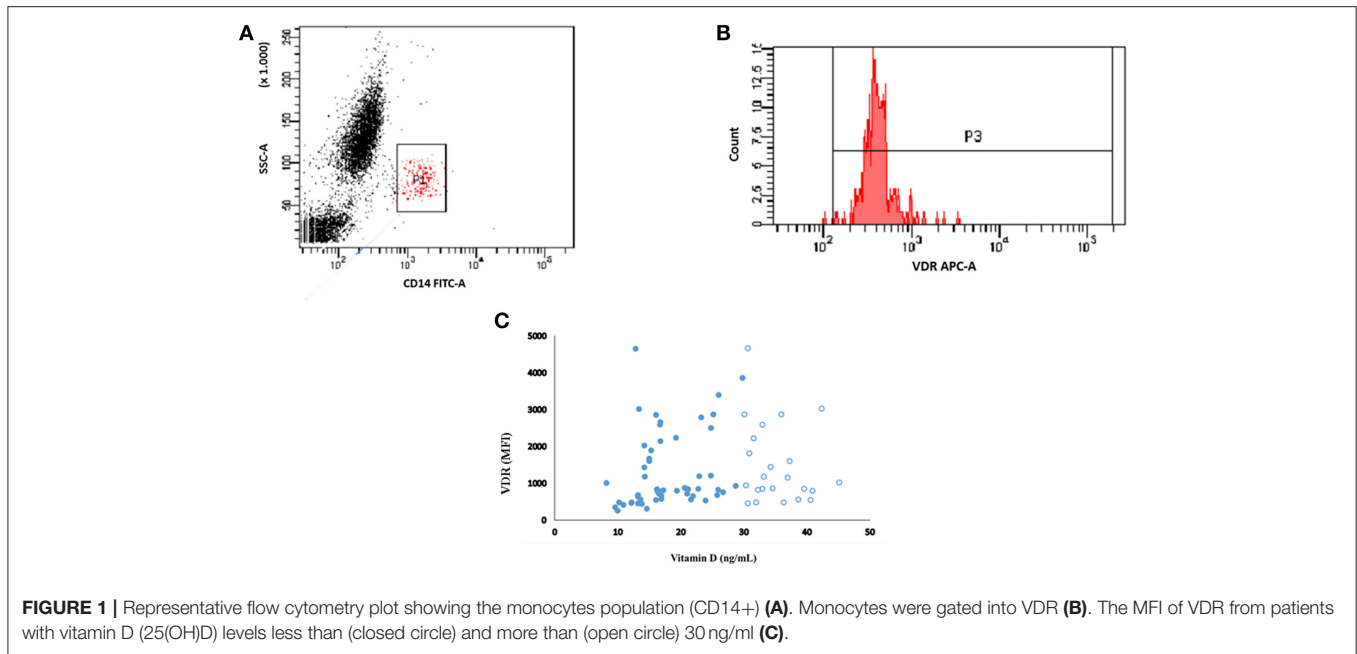
MRI was performed using a standardized respiratory-triggered, T2-weighted, axial, fat-suppressed fast-spin echo sequence without gadolinium on a 1.5-T scanner. TKV was determined from 3-mm axial T2 magnetic resonance images with renal volumetrics performed by obtaining length, width, and depth to calculate total TKV using the ellipsoid equation, with values combined from both kidneys, corrected for height (htTKV) (1).

Clinical and Laboratory Measurements

Creatinine was determined by an isotope dilution mass spectrometry traceable method and estimates of glomerular filtration rate (eGFR) were obtained using the CKD-EPI equation. Stages of CKD were defined according to KDIGO. Serum calcium, phosphorus, alkaline phosphatase (colorimetric methods), urinary urea (enzymatic assay), sodium (ion selective electrode), and albuminuria (immunoturbidimetry) were measured in a Beckman Clinical Chemistry Analyzer (AU480-America Inc., Pennsylvania, USA) and intact PTH by chemiluminescence assay (Architect intact PTH, Abbott, Germany). Serum intact Fibroblast growth factor 23 (FGF-23- R&D Systems Inc., Minneapolis, MN), interleukin-6 (IL-6), interleukin-10 (IL-10), tumor necrosis factor- α (TNF- α), and nuclear factor kappa B (NF κ B) (BD-Biosciences/eBiosciences, San Diego, CA) were determined by enzymatic immunoassays. Serum 25(OH)D was measured by chemiluminescence (Abbott Laboratories, Abbott Park, Illinois, USA) and 1,25(OH)₂D by HPLC. Hypovitaminosis D was defined according to the K/DOQI by 25(OH)D levels <30 ng/mL. Expression of VDR, CYP24A1, and CYP27B1 in monocytes were determined by flow cytometry (BD FACSCanto, San Jose, CA), as described elsewhere (21). **Figure 1** shows the monocytes characterized by CD14 and the expression of VDR as an example. Adenosine 3':5'-cyclic monophosphate (cAMP) was determined by an immunoenzymatic kit (cAMP Biotrak enzyme immunoassay, GE Healthcare, Amersham). Sodium chloride (NaCl) intake was estimated from urine sodium and protein intake by the protein equivalent of nitrogen appearance (PNA).

Statistical Analysis

Categorical variables were compared between vitamin D insufficient and sufficient groups using χ^2 or Fisher's exact tests. Continuous variables were submitted to a normality test (Kolmogorov–Smirnov) and nonparametric tests (Mann–Whitney) were performed when appropriate. Data were expressed as mean \pm SD, median and interquartile, or



proportions according to the distribution of variables. Spearman's correlation coefficients measured associations between variables. A multiple linear regression analysis with htTKV as the dependent variable, including hypertension, CRP, eGFR, age, time since diagnosis, VDR and 25(OH)D adjusted for season of the year was performed. $P < 0.05$ were considered as significant and the statistical package used was SPSS (Chicago, IL, USA). Given the lack of studies investigating the association between Vitamin D status and Kidney Volume in ADPKD, the sample size calculation was based on reports aimed to find inverse correlations between 25(OH)D and IL-6 (22, 23). As aforementioned, in line with an intervention study supplementing vitamin D foreseen for the patients with hypovitaminosis D, the current sample size was estimated as 28 patients in each group with or without hypovitaminosis D, with a drop-out of 20% ($n = 12$), based on a power of 95% and significance level of 1%, calculated through GPower program, version 3.1.9.2 (Franz Faul, University of Kiel, Germany).

RESULTS

Participants Characteristics

Of the 90 recruited patients, 14 were excluded because of previous use of vitamin D and 2 declined to participate in the study, so that 74 patients (30 M/44 F), aged 19–64 years old (40 ± 12), were enrolled. Hypovitaminosis D was observed in 46 (62%) patients, with insufficient levels (<30 ng/mL) in 39 (53%) and deficient levels (<15 ng/mL) in 7 (9%) of them. Seventy-three (73%) of patients were hypertensive and 65% were at CKD stage 1/2 and 35% at CKD 3/4. **Table 1** shows characteristics of VitD-insufficient or sufficient groups, which did not differ with regard to mean age, gender, and race distribution, time since diagnosis and presence of hypertension. The percentage of

patients under anti-hypertensive medication such as ACEi, ARB, or ACEi+ARB also did not differ between VitD-insufficient or sufficient groups (59 vs. 61%, $p = 0.864$; 11 vs. 7%, $p = 0.703$ and 0 vs. 7%, $p = 0.140$, respectively, data not shown). There has been no statistical difference in ABPM parameters and the percentage of non-dipping patients was similar for both groups (44 vs. 44%, data not shown). The percentage of blood collections obtained during the winter season was higher in VitD-insufficient group. Mean BMI, waist circumference and body fat were similar (**Table 1**), with an inadequate distribution of body fat in women (56 vs. 35%, $p = 0.190$) and in men (21 vs. 30%, $p = 0.689$), respectively for 25(OH)D <30 and >30 , without statistical differences between them (data not shown). Nutritional data and median eGFR also did not differ between them. The percentage of individuals with CKD stages 1, 2, 3, and 4 was not statistically different, 37 vs. 46%; 22 vs. 28%; 30 vs. 22%; 11 vs. 4%, $p = 0.716$, respectively for VitD-insufficient vs. sufficient (data not shown in tables). Except for median 1,25(OH) $_2$ D and CYP24A1, that were significantly higher in the former group, mineral metabolism and inflammatory markers were not statistically different. Of the 74 patients, 10 refused to undergo MRI because of claustrophobia and 8 presented a MRI scan with incomplete coverage of both kidneys, rendering it inappropriate to perform a reliable calculation of TKV. The median htTKV of vitamin D insufficient group was higher, 782 (440–10,540) mL/m ($n = 36$) when compared to vitamin D sufficient group 552 (308–817) mL/m ($n = 20$) but without statistical difference. Albuminuria and cAMP did not differ between groups. **Figure 1A** shows the representative plot of monocytes, **Figure 1B** represents the mean fluorescence intensity (MFI) of VDR gated from monocytes. There was no correlation between MFI of VDR and 25(OH)D levels (**Figure 1C**; **Table 2**). As shown in **Figure 2**, significant negative correlations between

TABLE 1 | Demographic, clinical, nutritional, and laboratorial characteristics of the patients.

Parameters	25(OH)D (ng/mL)			p
	Total (n = 74)	≥ 30 (n = 28)	<30 (n = 46)	
Age (years)	40 ± 12	39 ± 11	41 ± 12	0.493
Female/Male (n)	44/30	17/11	27/19	0.864
Afro-Brazilians [n (%)]	33 (45)	13 (46)	20 (43)	0.804
Time since diagnosis (years)	9 (4–13)	8.5 (4.5–12)	9 (4–14)	0.635
Winter season [n (%)]	22 (30)	2 (7)	20 (43)	<0.001
Hypertensives [n (%)]	54 (73)	21 (75)	33 (72)	0.759
ACEi [n (%)]	44 (81)	17 (61)	27 (59)	0.864
ARB [n (%)]	8 (15)	6 (11)	2 (7)	0.703
ACEi/ARB [n (%)]	2 (4)	2 (7)	0	0.140
Mean 24-h ambulatory BP (mmHg)				
Systolic	121 ± 11	121 ± 12	120 ± 11	0.971
Diastolic	77 ± 8	78 ± 8	77 ± 7	0.668
Mean daytime ambulatory BP (mmHg)				
Systolic	125 ± 12	125 ± 13	125 ± 11	0.722
Diastolic	82 ± 9	82 ± 10	82 ± 8	0.809
Mean nighttime ambulatory BP (mmHg)				
Systolic	111 ± 12	112 ± 12	110 ± 12	0.473
Diastolic	66 ± 8	68 ± 7	66 ± 8	0.266
Non-dippers [n (%)]				
BMI (kg/m ²)	27 ± 5	26 ± 6	27 ± 5	0.416
Waist circumference (cm)	94 ± 14	93 ± 14	95 ± 14	0.522
Body fat (%)	27 ± 9	26 ± 8	29 ± 9	0.440
Nutritional data				
PNA (g/d)	1.1 ± 0.3	1.1 ± 0.3	1.1 ± 0.2	0.435
NaCl (g/d)	11 (7–13)	12 (6–14)	10.5 (8.5–12)	0.911
Caffeine (mg/d)	44 (4–75)	49 (21–76)	43 (4–78)	0.683
Calcium (mg/d)	566 ± 320	620 ± 288	540 ± 338	0.157
Phosphorous (mg/d)	1111 ± 506	1172 ± 442	1082 ± 542	0.203
Vitamin D (UI/d)	60 ± 73	73 ± 63	54 ± 78	0.081
eGFR (mL/min/24 h/1.73 m ²)	76 (49–108)	88 (60–103)	72 (45–111)	0.479
Serum				
Calcium (mg/dL)	9.4 ± 0.4	9.4 ± 0.4	9.4 ± 0.4	0.654
Phosphorus (mg/dL)	3.3 ± 0.5	3.3 ± 0.6	3.2 ± 0.5	0.619
FGF-23 (pg/mL)	248 (83–2,192)	333 (85–2,277)	217 (83–1,818)	0.532
25(OH)D (ng/mL)	27 ± 9	36.5 ± 7	22 ± 5	<0.001
1,25(OH) ₂ D (pg/mL)	17 (14–25)	16 (13–19)	21 (15–26)	0.018
PTH (pg/mL)	52 (33–69)	45 (33–62)	56 (36–82)	0.107
Alkaline phosphatase (UI/L)	57 (47–71)	57 (53–71)	58 (46–72)	0.688
IL-10 (pg/mL)	59 (31–202)	50 (9–243)	60 (40–148)	0.436
IL-6 (pg/mL)	9.5 (7.4–18)	11 (7–18)	8.7 (7.5–18)	0.667
TNF-α (pg/mL)	10 (8–14)	9.5 (7.8–14.5)	11 (7.8–14)	0.862
CRP (mg/dL)	0.16 (0.08–0.35)	0.17 (0.08–0.40)	0.16 (0.08–0.34)	0.696
NFκB	0.21 (0.11–0.41)	0.26 (0.11–0.41)	0.20 (0.09–0.41)	0.605
Urine				
Albuminuria [n (%)]	35 (47)	13 (46)	22 (48)	0.979

(Continued)

TABLE 1 | Continued

Parameters	25(OH)D (ng/mL)			p
	Total (n = 74)	≥ 30 (n = 28)	<30 (n = 46)	
Urinary cyclic AMP (pMol/mL)	109 (73–237)	112 (77–228)	107 (72–251)	0.761
Expression in monocytes (MFI)				
VDR	849 (649–1,896)	1018 (792–1,896)	794 (649–1,677)	0.306
CYP24A1	548 (474–706)	483 (423–567)	640 (486–755)	0.007
CYP27B1	212 (192–250)	205 (197–221)	218 (188–285)	0.463
htTKV (mL/m)	679 (335–1,012)	552 (308–817)	782 (440–1,054)	0.124

TABLE 2 | Correlation (r) between parameters.

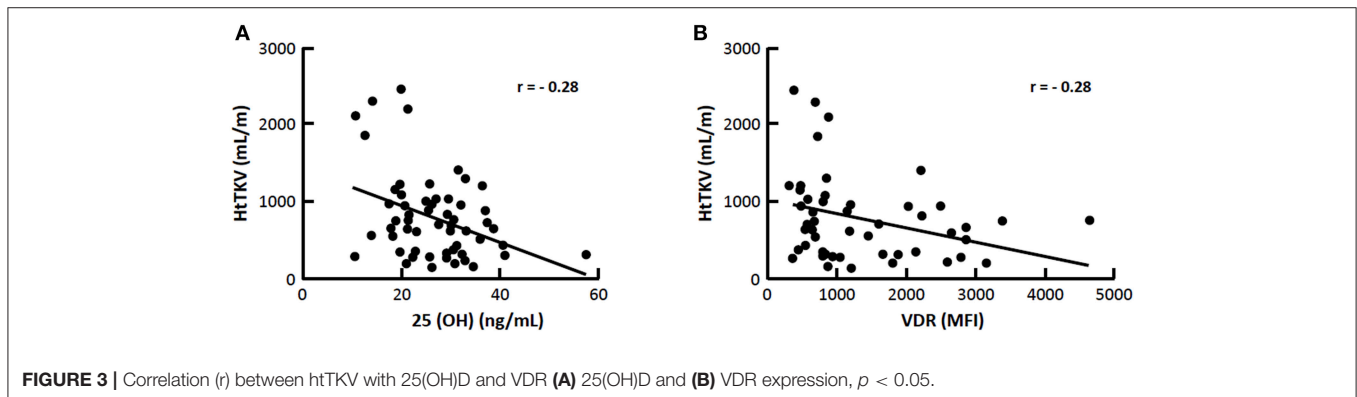
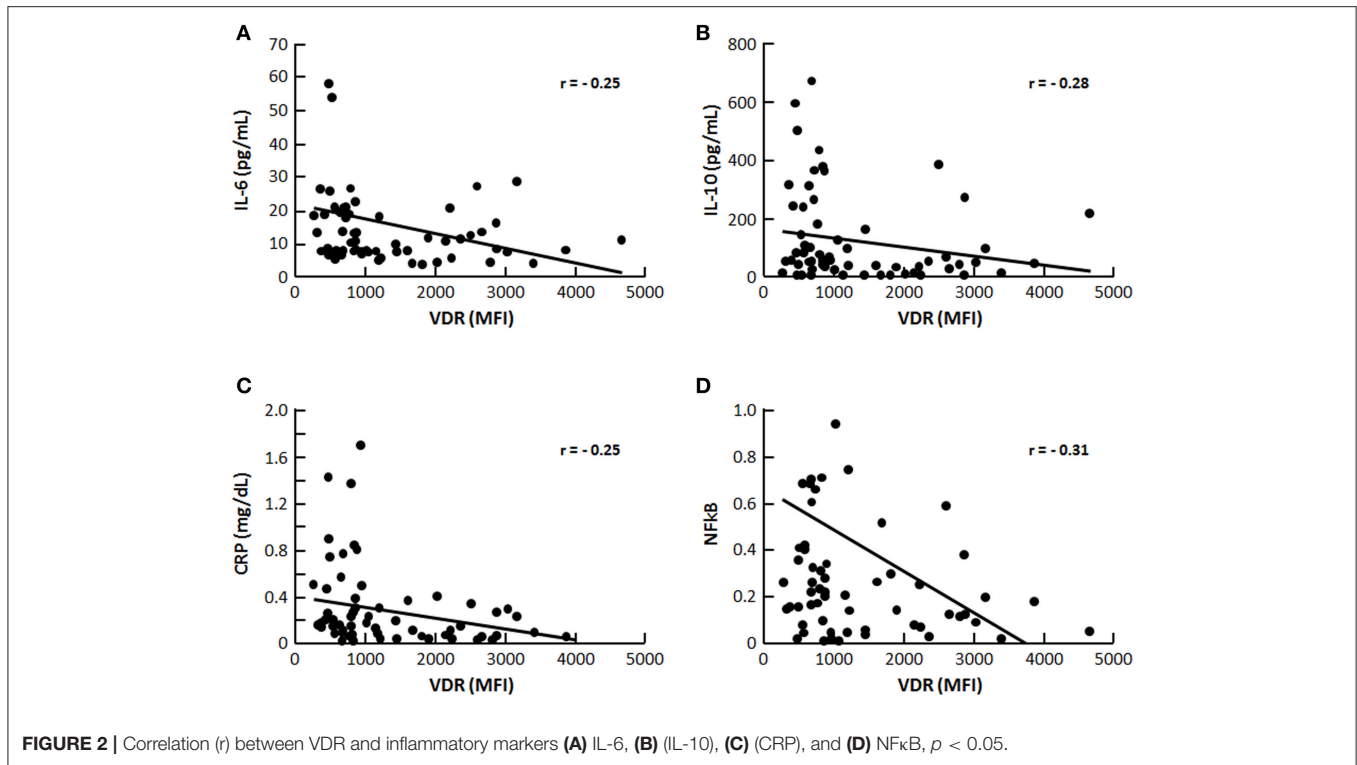
	25(OH)D (ng/mL)	1,25 (OH) ₂ D (pg/mL)	VDR (MFI)
SBP24 (mmHg)	0.02	−0.08	−0.11
DBP24(mmHg)	0.09	−0.09	−0.22
Albuminuria (μg/min)	−0.12	0.0001	−0.02
eGFR (mL/min/24 h/1.73 m ²)	0.11	−0.09	0.15
Body fat (%)	−0.09	−0.08	−0.16
PTH (pg/mL)	−0.23 ^b	0.04	0.04
FGF-23 (pg/mL)	0.07	0.16	0.12
1,25(OH) ₂ D ₃ (pg/mL)	−0.41 ^a	−	−
VDR (MFI)	0.07	0.31 ^b	−
CYP24A1 (MFI)	−0.38 ^b	0.07	0.17
CYP27B1 (MFI)	−0.18	0.41 ^c	0.66 ^a
htTKV (mL/m)	−0.28 ^b	−0.07	−0.28 ^b
IL-6 (pg/mL)	−0.03	−0.07	−0.25 ^b
IL-10 (pg/mL)	−0.08	0.01	−0.28 ^b
TNF-α (pg/mL)	−0.10	0.12	−0.05
CRP (mg/dL)	0.05	−0.22	−0.28 ^b
NFκB	0.02	−0.06	−0.31 ^b

^ap = 0.0001; ^bp < 0.05; ^cp = 0.006.

VDR expression with IL-6, IL-10, CRP, and NFκB were found. As depicted in **Figure 3**, significant negative correlations between htTKV with either 25(OH)D and VDR expression were observed. Other significant correlations, shown in **Table 2**, were detected between 25(OH)D and PTH, 1,25(OH)₂D, and CYP24A1; 1,25(OH)₂D with VDR and CYP24B1 expression and VDR with CYP27B1 expression. The multivariate linear regression analysis (**Table 3**) with htTKV as the dependent variable showed an independent and positive association of hypertension, CRP and negative with eGFR.

DISCUSSION

Vitamin D pleiotropic effects beyond mineral metabolism, such as potential reduction of arterial BP and inflammation (24), may



be of relevance in ADPKD (6, 14, 25). Increased inflammatory markers in serum, urine, and fluids of cysts have been detected in ADPKD patients (14, 26, 27). Preliminary data by Gitomer et al. (28) have suggested an inverse association between serum vitamin D and kidney volume in ADPKD but to the best of our knowledge, this is the first study to evaluate the association between vitamin D, its regulatory proteins and expression of VDR with predictors of ADPKD progression.

Vitamin D insufficiency was present in 62% and CYP24A1 was overexpressed in this group. Serum 25(OH)D and VDR expression were negatively correlated with htTKV, as was VDR with inflammatory markers.

Hypovitaminosis D was more prevalent for patients who had their blood samples drawn during winter, as already evidenced in our country (29, 30). Some studies have reported an association between hypovitaminosis D with BMI (29, 31)

possibly due to either the low exposure of obese individuals to sunlight or sequestration and storage of vitamin D in adipose tissue (32). We did not observe a higher BMI, waist circumference or percentage of body fat in vitD-insufficient patients, differing from previous studies by our group and others in CKD or after renal transplant (29, 31), but corroborating with Gronborg et al. (33), who found no association. Among potentially modifiable factors affecting progression of ADPKD (8), daily intakes of protein, NaCl, caffeine, calcium, phosphorous, and vitamin D did not differ between groups with or without hypovitaminosis D but both presented an intake of vitamin D under the recommended allowance (600 IU/day) and of NaCl, three-fold higher than the recommended by the American Heart Association (4 g/day). Caffeine intake was low, as already observed by our group in a previous evaluation (10).

TABLE 3 | Multivariate linear regression analyses with htTKV as dependent variable.

Independent variables	Multivariate analysis		
	Coefficiente β (EP)	p	R^2
Hypertension	13.09 (4.40)	0.005	0.100
Age (years)	0.276 (0.13)	0.040	0.076
Time since diagnosis (years)	-0.027 (0.13)	0.842	0.001
CRP (mg/dl)	0.283 (0.106)	0.011	0.073
VDR (MFI)	-0.319 (0.155)	0.046	0.080
25(OH)D (ng/ml)	-0.2018 (0.142)	0.149	0.081
eGFR (ml/min/24 h/1.73 m ²)	-0.446 (0.112)	<0.001	0.346

The percentage of hypertensive patients and 24-h ABPM parameters did not differ between vitD-insufficient vs. sufficient groups diverging from epidemiological data in general population using office BP measurements (34). The employment of 24-h ABPM in the current series reinforces the reliability of our findings, who agreed with other studies not showing an association (35, 36). On the other hand, it is possible that the anti-hypertensive treatment with ARB and/or ACEi by 72% of our patients could have contributed to the lack of association between vitamin D and BP. However, even under anti-hypertensive therapy, 31/70 (44%) of patients from the current series presented a non-dipping pattern, in accordance with several investigators (19, 37, 38), who have detected it even in otherwise normotensive ADPKD subjects (38), as an early manifestation of endothelial dysfunction (39). We observed a high percentage of albuminuria (48%), particularly among hypertensive patients, corroborating with data from Chapman et al. (40), but without association with hypovitaminosis D. The use of ARB and/or ACEi might have also accounted for by the absence of such association. As cAMP accumulation plays a central role in cystogenesis (41), we determined urine levels of cAMP in the present series, but no statistical difference has been detected between vitD-insufficient or sufficient groups. The median level of eGFR and the percentage of CKD patients (stages 3/4) distributed among vitD-sufficient (26%) and insufficient groups (41%) were not statistically different ($p = 0.716$), what rendered more adequate the comparison of all parameters between groups.

Serum 25(OH)D was negatively correlated with PTH, as expected (42), although median PTH did not differ between vitD-sufficient and insufficient groups. Surprisingly, the latter presented a significantly higher median 1,25(OH)₂D compared to the sufficient group, and a negative correlation between 25(OH)D with 1,25(OH)₂D in the whole sample was disclosed. These unforeseen findings might have been attributed, as suggested by Need et al. (43), to a biphasic relationship between calcidiol and calcitriol depending on the level of 25(OH)D: positive whenever it is in the normal range (attributed to substrate deficiency), but negative when it is low, due to secondary hyperparathyroidism. Although inflammatory parameters were similar among vitD-insufficient and sufficient

patients, an inverse association of VDR expression with IL-6, IL-10, NF κ B, and CRP was observed, supporting that VDR is directly involved in the regulation of inflammatory response (16). A chronic inflammatory milieu is observed in cystic PKD kidneys, as evidenced by the large numbers of interstitial macrophages ultimately promoting cyst epithelial cell proliferation, cyst expansion, and disease progression (44). Cultured Pkd1-deficient cells express the monocyte chemoattractant protein-1 (MCP-1) and CXCL16 (C-X-C Motif Chemokine Ligand 16) and large numbers of activated macrophages surrounding the cysts have been observed in orthologous models of PKD (45). Peda et al. (44) have demonstrated that cystic epithelial cells induce renal M2-like macrophage polarization which in turn enhances the ability to promote cyst cell proliferation. IL-10 was shown to be upregulated in human ADPKD tissue and present in cyst fluid, and although this regulatory cytokine has anti-inflammatory functions, M2-phenotype requires IL-10 secretion by the macrophages and IL-10-stimulated activation of STAT3 is required for this pathological macrophage differentiation (44). M2-like macrophages have been identified in interstitial areas juxtaposed to cysts in human ADPKD kidneys, potentially promoting cyst growth by stimulating nearby cyst lining epithelial cells (46). Recently, lysine methyltransferase SMYD2 was shown to increase cystic renal cell proliferation through methylation and activation of STAT3 and the p65 subunit of NF κ B (47). VDR can form a complex with the p65 subunit of NF κ B to produce anti-inflammatory actions (24) and vitamin D supplementation has already been reported to help reducing circulating levels of IL-6 in other populations such as end-stage renal disease patients (21). The inverse correlation between VDR with IL-10 and NF κ B observed in the present series, suggest that targeting reduction of inflammation with vitamin D or other VDR-stimulating agents may represent an effective strategy for slowing PKD progression and further studies are needed to test this hypothesis. We cannot exclude the possibility of vitamin D deficiency being a consequence rather than the cause of inflammatory response, as excess of 1,25(OH)₂D is produced in an effort to up-regulate the VDR and 25(OH)D is rapidly metabolized in this process (48). D. In the present series, median serum calcium, phosphorus, alkaline phosphatase did not differ between vitD-sufficient vs. insufficient patients. Median FGF-23 in the whole sample, composed mostly of ADPKD patients at CKD stages 1 and 2, was high if compared to CKD caused by other conditions (49, 50), being in agreement with Pavik et al. (51) who observed a four-fold increase in FGF-23 from ADPKD compared to CKD of other etiologies with similar eGFR, although no association with 25(OH)D and 1,25(OH)₂D was detected. Accordingly, in the present sample, FGF-23 was not statistically different between groups with or without hypovitaminosis D, nor correlated with 25(OH)D or 1,25(OH)₂D. Since both groups had been equally exposed to the use of ACEi (61 vs. 59%), the latter could have acted as a confounder, negatively regulating FGF-23 levels and disrupting the cross-talk between vitamin D and RAS (24). Moreover, as shown by Spichtig et al. (52), FGF-23 is detected in cells lining renal cysts of PKD

animals but it fails to appreciably downregulate CYP27B1 due to resistance.

With regard to vitamin D regulatory enzymes, the vitD-insufficient D group presented a higher median expression of CYP24A1, which in turn correlated negatively with 25(OH)D, raising the hypothesis of vitamin D catabolism. As expected, we found a positive correlation between CYP27B1 with both 1,25(OH)₂D and VDR. In line with the data by Spichtig et al. (52) correlations between FGF-23 and CYP24A1 have not been disclosed in the current study as well (data not shown).

Finally, the negative correlation between both 25(OH)D levels and VDR expression with htTKV disclosed in the present study, suggested a potential contribution of hypovitaminosis D to kidney enlargement in ADPKD. However, the results of the multivariate regression analysis with htTKV as the dependent variable, including hypertension, CRP, eGFR, age, time since diagnosis, VDR and 25(OH)D adjusted for season of the year showed that only the first three parameters were independent predictors of the former.

Limitations of the present study included its cross-sectional design and the need of concomitant use of anti-hypertensive therapy, which could have contributed, at least in part, to the negative results obtained with respect to blood pressure. The high proportion of hypovitaminosis D obtained in samples collected during the winter might have influenced our results. Therefore, an adjustment of the serum 25(OH)D results according to the season of the year in the multiple regression analysis was performed to take into account this confounded limitation. On the other hand, our study also has strengths such as the employment of 24-h ABPM for BP measurements.

In conclusion, present findings suggested that low levels of serum 25(OH)D and VDR expression are associated with a higher kidney volume in ADPKD patients, but hypovitaminosis

D does not represent an independent risk factor for increasing kidney volume.

ETHICS STATEMENT

The study was reviewed and approved by the Ethics Advisory Committee of the Universidade Federal de São Paulo, and each patient signed the informed consent form in accordance with the Declaration of Helsinki.

AUTHOR CONTRIBUTIONS

LV designed the study, performed the clinical study and the experiments, analyzed the data, and drafted the manuscript. IH designed the study, analyzed the data, provided intellectual content of critical importance to the work described, and revised the manuscript. MD, JdC, and JN participated in the analysis of data. MB helped in the conception and analysis of data.

FUNDING

This study was supported by Fundação de Amparo à Pesquisa do Estado de São Paulo (FAPESP 2012/09219-2), Coordenação de Aperfeiçoamento Pessoal de Nível Superior (CAPES), and Conselho Nacional de Desenvolvimento Científico e Tecnológico (CNPq- Grant number 309045/2018-5 (IP)).

ACKNOWLEDGMENTS

We express our thanks to Aluizio Barbosa Carvalho for fruitful discussions and to Silvia Regina Moreira for technical assistance.

REFERENCES

- Irazabal MV, Rangel LJ, Bergstralh EJ, Osborn SL, Harmon AJ, Sundsbak JL, et al. CRISP investigators: imaging classification of autosomal dominant polycystic kidney disease: a simple model for selecting patients for clinical trials. *J Am Soc Nephrol.* (2015) 26:160–72. doi: 10.1681/ASN.2013101138
- Grantham JJ, Torres VE, Chapman AB, Guay-Woodford LM, Bae KT, King BF Jr, et al. Volume progression in polycystic kidney disease. *N Engl J Med.* (2006) 354:2122–30. doi: 10.1056/NEJMoa054341
- Chapman AB, Bost JE, Torres VE, Guay-Woodford L, Bae KT, Landsittel D, et al. Kidney volume and functional outcomes in autosomal dominant polycystic kidney disease. *Clin J Am Soc Nephrol.* (2012) 7:479–86. doi: 10.2215/CJN.09500911
- Ecker T, Schrier RW. Cardiovascular abnormalities in autosomal-dominant polycystic kidney disease. *Nat Rev Nephrol.* (2009) 5:221–8. doi: 10.1038/nrneph.2009.13
- Chapman AB, Stepniakowski K, Rahbari-Oskoui F. Hypertension in autosomal dominant polycystic kidney disease. *Adv Chronic Kidney Dis.* (2010) 17:153–63. doi: 10.1053/j.ackd.2010.01.001
- Fonseca JM, Bastos AP, Amaral AG, Sousa MF, Souza LE, Malheiros DM, et al. Renal cyst growth is the main determinant for hypertension and concentrating deficit in Pkd1-deficient mice. *Kidney Int.* (2014) 85:1137–50. doi: 10.1038/ki.2013.501
- Schrier RW, Brosnahan G, Cadnapaphornchai MA, Chonchol M, Friend K, Gitomer B, et al. Predictors of autosomal dominant polycystic kidney disease progression. *J Am Soc Nephrol.* (2014) 25:2399–418. doi: 10.1681/ASN.2013111184
- Torres VE, Grantham JJ, Chapman AB, Mrug M, Bae KT, King BF Jr, et al. Consortium for radiologic imaging studies of polycystic kidney disease (CRISP): potentially modifiable factors affecting the progression of autosomal dominant polycystic kidney disease. *Clin J Am Soc Nephrol.* (2011) 6:640–7. doi: 10.2215/CJN.03250410
- Taylor JM, Ptomey L, Hamilton-Reeves JM, Sullivan DK, Creed C, Carlson SE, et al. Experiences and perspectives of polycystic kidney disease patients following a diet of reduced osmoles, protein, and acid precursors supplemented with water: a qualitative study. *PLoS ONE.* (2016) 11:113. doi: 10.1371/journal.pone.0161043
- Vendramini LC, Nishiura JL, Baxmann AC, Heilberg IP. Caffeine intake by patients with autosomal dominant polycystic kidney disease. *Braz J Med Biol Res.* (2012) 45:834–40. doi: 10.1590/S0100-879X2012007500120
- Belibi FA, Reif G, Wallace DP, Yamaguchi T, Olsen L, Li H, et al. Cyclic AMP promotes growth and secretion in human polycystic kidney epithelial cells. *Kidney Int.* (2004) 66:964–73. doi: 10.1111/j.1523-1755.2004.00843.x
- Nishiura JL, Neves RF, Eloi SR, Cintra SM, Ajzen SA, Heilberg IP. Evaluation of nephrolithiasis in autosomal dominant polycystic kidney disease patients. *Clin J Am Soc Nephrol.* (2009) 4:838–44. doi: 10.2215/CJN.03100608
- Meca R, Balbo BE, Ormanji MS, Fonseca JM, Iannuzzi LR, Costa ES, et al. Caffeine accelerates cystic kidney disease in a Pkd1-deficient mouse model. *Cell Physiol Biochem.* (2019) 52:1061–74. doi: 10.33594/0000000072

14. Menon V, Rudym D, Chandra P, Miskulin D, Perrone R, Sarnak M. Inflammation, oxidative stress, and insulin resistance in polycystic kidney disease. *Clin J Am Soc Nephrol.* (2011) 6:7–13. doi: 10.2215/CJN.04140510
15. Jurutka PW, Bartik L, Whitfield GK, Mathern DR, Barthel TK, Gurevich M, et al. Vitamin D receptor: key roles in bone mineral pathophysiology, molecular mechanism of action, and novel nutritional ligands. *J Bone Miner Res.* (2007) 22 (Suppl. 2):V2–10. doi: 10.1359/jbmr.07s216
16. Chen Y, Zhang J, Ge X, Du J, Deb DK, Li YC. Vitamin D receptor inhibits nuclear factor κ B activation by interacting with I κ B kinase β protein. *J Biol Chem.* (2013) 288:19450–8. doi: 10.1074/jbc.M113.467670
17. Rangan GK, Schwensen KG, Foster SL, Korgaonkar MS, Peduto A, Harris DC. Chronic effects of dietary vitamin d deficiency without increased calcium supplementation on the progression of experimental polycystic kidney disease. *Am J Physiol Renal Physiol.* (2013) 305:F574–82. doi: 10.1152/ajprenal.00411.2012
18. Lai S, Petramala L, Mastroluca D, Petraglia E, Di Gaeta A, Indino E, et al. Hyperaldosteronism and cardiovascular risk in patients with autosomal dominant polycystic kidney disease. *Medicine.* (2016) 95:e4175. doi: 10.1097/MD.00000000000004175
19. Pei Y, Obaji J, Dupuis A, Paterson AD, Magistroni R, Dicks E, et al. Unified criteria for ultrasonographic diagnosis of ADPKD. *J Am Soc Nephrol.* (2009) 20:205–12. doi: 10.1681/ASN.2008050507
20. Parati G, Stergiou G, O'Brien E, Asmar R, Beilin L, Bilo G, et al. European society of hypertension working group on blood pressure monitoring and cardiovascular variability: european society of hypertension practice guidelines for ambulatory blood pressure monitoring. *J Hypertens.* (2014) 32:1359–66. doi: 10.1097/HJH.0000000000000221
21. Stubbs JR, Idiculla A, Slusser J, Menard R, Quarles LD. Cholecalciferol supplementation alters calcitriol-responsive monocyte proteins and decreases inflammatory cytokines in ESRD. *J Am Soc Nephrol.* (2010) 21:353–61. doi: 10.1681/ASN.2009040451
22. Bednarek-Skublewska A, Smolen A, Jaroszynski, Zaluska W, Ksiazek A. Effects of vitamin D₃ on selected biochemical parameters of nutritional status, inflammation, and cardiovascular disease in patients undergoing long-term hemodialysis. *Pol Arch Med Wewn.* (2010) 120:167–74.
23. Jablonski K, Chonchol M, Pierce GL, Walker AE, Seals DR. 25-hydroxyvitamin D deficiency is associated with inflammation-linked vascular endothelial dysfunction in middle-aged and older adults. *Hypertension.* (2011) 57:63–9. doi: 10.1161/HYPERTENSIONAHA.110.160929
24. Doorenbos CR, van den Born J, Navis G, de Borst MH. Possible renoprotection by vitamin D in chronic renal disease: beyond mineral metabolism. *Nat Rev Nephrol.* (2009) 5:691–700. doi: 10.1038/nrneph.2009.185
25. Ta MHT, Harris DCH, Rangan GK. Role of interstitial inflammation in the pathogenesis of polycystic kidney disease. *Nephrology.* (2013) 18:317–30. doi: 10.1111/nep.12045
26. Zheng D, Wolfe M, Cowley BD, Wallace DP, Yamaguchi T, Grantham JJ. Urinary excretion of monocyte chemoattractant protein-1 in autosomal dominant polycystic kidney disease. *J Am Soc Nephrol.* (2003) 14:2588–95. doi: 10.1097/01.ASN.0000088720.61783.19
27. Gardner KD, Burnside JS, Elzinga LW, Locksley RM. Cytokines in fluids from polycystic kidneys. *Kidney Int.* (1991) 39:718–24. doi: 10.1038/ki.1991.87
28. Gitomer BCM, Masoumi A, Chonchol M, McFann K, Wang W, Yan XD, Schrier R. Vitamin D deficiency and renal volume in autosomal dominant polycystic kidney disease. *J Am Soc Nephrol.* (2010) 21:529A.
29. Figueiredo-Dias V, Cuppari L, Garcia-Lopes MG, de Carvalho AB, Draibe SA, Kamimura MA. Risk factors for hypovitaminosis D in nondialyzed chronic kidney disease patients. *J Ren Nutr.* (2012) 22:4–11. doi: 10.1053/j.jrn.2011.02.001
30. Unger MD, Cuppari L, Titan SM, Magalhães MC, Sasaki AL, dos Reis LM, et al. Vitamin D status in a sunny country: where has the sun gone? *Clin Nutr.* (2010) 29:784–8. doi: 10.1016/j.clnu.2010.06.009
31. Baxmann AC, Menon VB, Medina-Pestana JO, Carvalho AB, Heilberg IP. Overweight and body fat are predictors of hypovitaminosis D in renal transplant patients. *Clin Kidney J.* (2015) 8:49–53. doi: 10.1093/ckj/sfu120
32. Mawer EB, Backhouse J, Holman CA, Lumb GA, Stanbury SW. The distribution and storage of vitamin d and its metabolites in human tissues. *Clin Sci.* (1972) 43:413–31. doi: 10.1042/cs0430413
33. Gronborg IM, Lundby IM, Molgaard C, Jakobsen J, Ovesen L, Andersen R. Association of body fat and vitamin D status and the effect of body fat on the response to vitamin D supplementation in pakistani immigrants in denmark. *Eur J Clin Nutr.* (2015) 69:405–7. doi: 10.1038/ejcn.2014.254
34. Martins D, Wolf M, Pan D, Zadsir A, Tareen N, Thadhani R, et al. Prevalence of cardiovascular risk factors and the serum levels of 25-hydroxyvitamin D in the United States—data from the third national health and nutrition examination survey. *Arch Intern Med.* (2007) 167:1159–65. doi: 10.1001/archinte.167.11.1159
35. Snijder MB, Lips P, Seidell JC, Visser M, Deeg DJ, Dekker JM, et al. Vitamin D status and parathyroid hormone levels in relation to blood pressure: a population-based study in older men and women. *J Intern Med.* (2007) 261:558–65. doi: 10.1111/j.1365-2796.2007.01778.x
36. Scragg R, Khaw KT, Murphy S. Life-style factors associated with winter serum 25-hydroxyvitamin-d levels in elderly adults. *Age Ageing.* (1995) 24:271–5. doi: 10.1093/ageing/24.4.271
37. Turgut F, Oflaz H, Namli S, Alisir S, Tufan F, Temiz S, et al. Ambulatory blood pressure and endothelial dysfunction in patients with autosomal dominant polycystic kidney disease. *Ren Fail.* (2007) 29:979–84. doi: 10.1080/08860220701641728
38. Valero FA, Martinez-Vea A, Bardaji A, Gutierrez C, Garcia C, Richart C, et al. Ambulatory blood pressure and left ventricular mass in normotensive patients with autosomal dominant polycystic kidney disease. *J Am Soc Nephrol.* (1999) 10:1020–6.
39. Reinecke NL, Cunha TM, Heilberg IP, Higa EM, Nishiura JL, Neder JA, et al. Exercise capacity in polycystic kidney disease. *Am J Kidney Dis.* (2014) 64:239–46. doi: 10.1053/j.ajkd.2014.03.014
40. Chapman AB, Johnson AM, Gabow PA, Schrier RW. Overt proteinuria and microalbuminuria in autosomal dominant polycystic kidney disease. *J Am Soc Nephrol.* (1994) 5:1349–54.
41. Barash I, Ponda MP, Goldfarb DS, Skolnik EY. A pilot clinical study to evaluate changes in urine osmolality and urine cAMP in response to acute and chronic water loading in autosomal dominant polycystic kidney disease. *Clin J Am Soc Nephrol.* (2010) 5:693–7. doi: 10.2215/CJN.04180609
42. Stavroulopoulos A, Porter CJ, Roe SD, Hosking DJ, Cassidy MJ. Relationship between vitamin D status, parathyroid hormone levels and bone mineral density in patients with chronic kidney disease stages 3 and 4. *Nephrology.* (2008) 13:63–7. doi: 10.1111/j.1440-1797.2007.00860.x
43. Need AG, Horowitz M, Morris HA, Nordin BC. Vitamin D status: effects on parathyroid hormone and 1,25-dihydroxyvitamin D in postmenopausal women. *Am J Clin Nutr.* (2000) 71:1577–81. doi: 10.1093/ajcn/71.6.1577
44. Peda JD, Salah SM, Wallace DP, Fields PE, Grantham CJ, Fields TA, et al. Autocrine IL-10 activation of the STAT3 pathway is required for pathological macrophage differentiation in polycystic kidney disease. *Dis Model Mech.* (2016) 9:1051–61. doi: 10.1242/dmm.024745
45. Karihaloo A, Koraisy F, Huen SC, Lee Y, Merrick D, Caplan MJ, et al. Macrophages promote cyst growth in polycystic kidney disease. *J Am Soc Nephrol.* (2011) 22:1809–14. doi: 10.1681/ASN.2011010084
46. Swenson-Fields KI, Vivian CJ, Salah SM, Peda JD, Davis BM, van Rooijen N, et al. Macrophages promote polycystic kidney disease progression. *Kidney Int.* (2013) 83:855–64. doi: 10.1038/ki.2012.446
47. Li LX, Fan LX, Zhou JX, Grantham JJ, Calvet JP, Sage J, et al. Lysine methyltransferase SMYD2 promotes cyst growth in autosomal dominant polycystic kidney disease. *J Clin Invest.* (2017) 127:2751–64. doi: 10.1172/JCI90921
48. Mangin M, Sinha R, Fincher K. Inflammation and vitamin D: the infection connection. *Inflamm Res.* (2014) 63:803–19. doi: 10.1007/s00011-014-0755-z
49. Oliveira RB, Cancela AL, Gracioli FG, Dos Reis LM, Draibe SA, Cuppari L, et al. Early control of PTH and FGF23 in normophosphatemic CKD patients: a new target in CKD-MBD therapy? *Clin J Am Soc Nephrol.* (2010) 5:286–91. doi: 10.2215/CJN.05420709

50. Wolf M. Forging forward with 10 burning questions on FGF23 in kidney disease. *J Am Soc Nephrol.* (2010) 21:1427–35. doi: 10.1681/ASN.2009121293
51. Pavik I, Jaeger P, Kistler AD, Poster D, Krauer F, Cavelti-Weder C, et al. Patients with autosomal dominant polycystic kidney disease have elevated fibroblast growth factor 23 levels and a renal leak of phosphate. *Kidney Int.* (2011) 79:234–40. doi: 10.1038/ki.2010.375
52. Spichtig D, Zhang H, Mohebbi N, Pavik I, Petzold K, Stange G, et al. Renal expression of FGF23 and peripheral resistance to elevated FGF23 in rodent models of polycystic kidney disease. *Kidney Int.* (2014) 85:1340–50. doi: 10.1038/ki.2013.526

Conflict of Interest Statement: The authors declare that the research was conducted in the absence of any commercial or financial relationships that could be construed as a potential conflict of interest.

Copyright © 2019 Vendramini, Dalboni, de Carvalho, Batista, Nishiura and Heilberg. This is an open-access article distributed under the terms of the Creative Commons Attribution License (CC BY). The use, distribution or reproduction in other forums is permitted, provided the original author(s) and the copyright owner(s) are credited and that the original publication in this journal is cited, in accordance with accepted academic practice. No use, distribution or reproduction is permitted which does not comply with these terms.