



METHOD ARTICLE

REVISED Computational assessment of stomach tumor volume from multi-slice computerized tomography images in presence of type 2 cancer [version 2; referees: 2 approved, 1 not approved]

Gerardo Chacón^{1,2}, Johel E. Rodríguez¹, Valmore Bermúdez¹, Miguel Vera^{3,4}, Juan Diego Hernández¹, Sandra Vargas¹, Aldo Pardo², Carlos Lameda⁵, Delia Madriz⁶, Antonio J. Bravo⁶

¹Universidad Simón Bolívar, Facultad de Ingeniería, Cúcuta, 540004, Colombia

²Grupo de Automatización y Control, Universidad de Pamplona, Cúcuta, 540004, Colombia

³Universidad Simón Bolívar, Facultad de Ciencias Básicas y Biomédicas, Cúcuta, 540004, Colombia

⁴Grupo de Investigación en Procesamiento Computacional de Datos, Universidad de Los Andes-Táchira, San Cristóbal, 5001, Venezuela

⁵Universidad Nacional Experimental Politécnica Antonio José de Sucre, Barquisimeto, 3001, Venezuela

⁶Programa Calidad y Productividad Organizacional, Decanato de Investigación, Universidad Nacional Experimental del Táchira, San Cristóbal, 5001, Venezuela

v2 First published: 17 Jul 2018, 7:1098 (<https://doi.org/10.12688/f1000research.14491.1>)
 Latest published: 09 Oct 2018, 7:1098 (<https://doi.org/10.12688/f1000research.14491.2>)

Abstract

Background: The multi-slice computerized tomography (MSCT) is a medical imaging modality that has been used to determine the size and location of the stomach cancer. Additionally, MSCT is considered the best modality for the staging of gastric cancer. One way to assess the type 2 cancer of stomach is by detecting the pathological structure with an image segmentation approach. The tumor segmentation of MSCT gastric cancer images enables the diagnosis of the disease condition, for a given patient, without using an invasive method as surgical intervention.

Methods: This approach consists of three stages. The initial stage, an image enhancement, consists of a method for correcting non homogeneities present in the background of MSCT images. Then, a segmentation stage using a clustering method allows to obtain the adenocarcinoma morphology. In the third stage, the pathology region is reconstructed and then visualized with a three-dimensional (3-D) computer graphics procedure based on marching cubes algorithm. In order to validate the segmentations, the Dice score is used as a metric function useful for comparing the segmentations obtained using the proposed method with respect to ground truth volumes traced by a clinician.

Results: A total of 8 datasets available for patients diagnosed, from the cancer data collection of the project, Cancer Genome Atlas Stomach Adenocarcinoma (TCGASTAD) is considered in this research. The volume of the type 2 stomach tumor is estimated from the 3-D shape computationally segmented from the each dataset. These 3-D shapes are computationally reconstructed and then used to assess the morphopathology macroscopic features of this cancer.

Open Peer Review

Referee Status:

	Invited Referees		
	1	2	3
REVISED			
version 2 published 09 Oct 2018			report
version 1 published 17 Jul 2018	 report	 report	

- 1 **Jorge Brieva** , Panamerican University, Mexico
- 2 **Fred Prior** , University of Arkansas for Medical Sciences (UAMS), USA
- 3 **Pablo Guillen-Rondon**, University of Houston, USA

Discuss this article

Conclusions: The segmentations obtained are useful for assessing qualitatively and quantitatively the stomach type 2 cancer. In addition, this type of segmentation allows the development of computational models that allow the planning of virtual surgical processes related to type 2 cancer.

Comments (0)

Keywords

Stomach tumor, type 2 cancer, medical imaging, multi-slice computerized tomography, image enhancement, region growing method, marching cubes, three-dimensional reconstruction

Corresponding author: Gerardo Chacón (j.chacon@unisimonbolivar.edu.co)

Author roles: **Chacón G:** Investigation, Writing – Original Draft Preparation; **Rodríguez JE:** Formal Analysis; **Bermúdez V:** Funding Acquisition, Writing – Review & Editing; **Vera M:** Validation, Writing – Review & Editing; **Hernández JD:** Data Curation; **Vargas S:** Writing – Review & Editing; **Pardo A:** Software; **Lameda C:** Software; **Madriz D:** Conceptualization, Methodology, Writing – Review & Editing; **Bravo AJ:** Conceptualization, Investigation, Methodology, Writing – Review & Editing

Competing interests: No competing interests were disclosed.

Grant information: This work was supported by the Universidad Simón Bolívar, Colombia (grant C2011720117).

Copyright: © 2018 Chacón G *et al.* This is an open access article distributed under the terms of the [Creative Commons Attribution Licence](#), which permits unrestricted use, distribution, and reproduction in any medium, provided the original work is properly cited.

How to cite this article: Chacón G, Rodríguez JE, Bermúdez V *et al.* **Computational assessment of stomach tumor volume from multi-slice computerized tomography images in presence of type 2 cancer [version 2; referees: 2 approved, 1 not approved]** *F1000Research* 2018, 7:1098 (<https://doi.org/10.12688/f1000research.14491.2>)

First published: 17 Jul 2018, 7:1098 (<https://doi.org/10.12688/f1000research.14491.1>)

REVISED Amendments from Version 1

The hyperlink to the data source is modified to <https://wiki.cancerimagingarchive.net/display/Public/TCGA-STAD> (Cancer Imaging Archive).

The procedure for constructing the LUT of the Phase 1: Image enhancement has been modified.

In the "Phase 2: Segmentation" section, we have added further details regarding the region growing algorithm of the multi-platform application VolView, and the two parameters it considers: the neighborhood size for the region growing (l), and scale factor of grouping (τ).

We have provided further details for the parameters tuning procedure and have added details about the maximum and minimum estimated errors of segmentations, in the "Validation of the segmentation" section

The last paragraph of the "Conclusion" section has been modified to include a statement about the necessity of a more complete validation in future work which considers more large-image datasets.

See referee reports

Introduction

Computed tomography (CT) is a 3-D medical imaging tool, with extensive beneficial impact on the diagnosis, characterization and explanation of complex health issues¹. The latest development in spiral CT with electrocardiogram gating technology is with multislice CT (MSCT) which has allowed for the acquisition of large volumes data and for the obtainment of dynamic volume imaging^{2,3}.

MSCT of the abdomen has been used to determine the size and location of stomach cancers⁴. This imaging modality has allowed for the staging of stomach cancer tumors. In general, MSCT is considered the best modality for the staging of gastric cancer and it allows for the assessment of local tumor extension, nodal disease and metastases through a non-invasive clinical procedure⁵.

The ability of multi-detector systems to acquire wider areas of the abdomen than simple detector systems prevents the generation of image motion artifacts that are mainly due to the long breath-holds required. In this sense, the total abdomen acquisition requires shorter acquisition times, which decreases the amount of contrast product that needs to be used and increases the resolution of the 3-D images.

The manual assessment of the volume of adenocarcinoma of the stomach by CT requires the setting of the window width and window level in Hounsfield units, values that are generated by the subjective estimation of the clinician. In addition, the tumor must be delineated manually in each slice of the 3-D MSCT image. Following this, the area of the tumor is calculated according to the delineated region on each axial image plane. Finally, each area of the contiguous transverse tumor slice is summed to compute the whole-tumor volume.

To analyze the features and/or spatial distribution of functional regions of anatomic tissues or organs from medical

images, segmentation, as an image processing technique, has been extensively used⁶. Segmentation has been also used as preprocessing technique to extract the information required for processing techniques, such as diagnosis or quantification⁷, visualization⁸, and compression, storage and transmission^{9,10}. The objective of segmentation is organizing and grouping the set of shapes contained in the images using the proximity, similarity and continuity of the shapes as the organization and grouping criteria^{11,12}.

The two basic kinds of medical image segmentation techniques are based on the delineation of a curve that defines the anatomical structures¹³, and the application of pattern classification methods¹⁴. Both kinds allow for representation of the image as a non-overlapped set of two regions (the subject of interest and the background).

According to the Borrmann classification¹⁵, type 2 cancer is an ulcerated but circumscribed advanced cancer. This cancer type is ulcerated, with partial marginal elevation and partial diffuse dissemination; it is frequently located in the antro and lesser curvature. **Figure 1** shows the shape of type 2 cancer.

The Japanese Gastric Cancer Association^{16,17} typified type 2 cancer as an advanced cancer that deepens and invades the muscular or subserosa layer. Type 2 or superficial cancer is classified as elevated or slightly elevated (less than 5 mm), flattened or flat, and depressed (**Figure 2**).

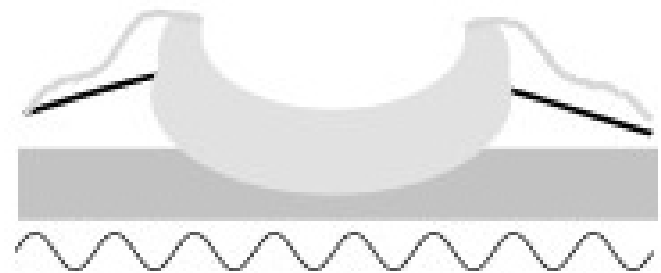


Figure 1. Type 2 cancer according Borrmann classification.

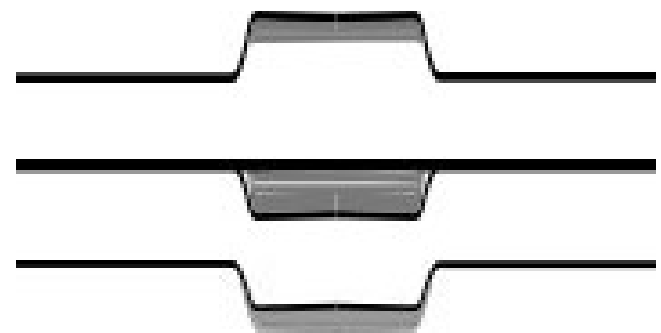


Figure 2. Japanese sub-classification of type 2 cancer.

This study presents the outcome of the development of a computational approach for assessing of type 2 stomach cancer from MSCT abdominal images. The approach consists of three stages. The initial stage, an image enhancement, consists of a method for correcting non-homogeneities present in the background of MSCT images. Next, a segmentation stage using a clustering method allows to obtain the adenocarcinoma morphology. In the third stage, the pathology region is reconstructed and then visualized with a 3-D computer graphics procedure based on marching cubes

The computational approach proposed herein adds to the academic contributions to the medical field, specifically the diagnosis and/or treatment of pathologies that require further scientific advances to increase the rate of curability. The social impact of this research is notable, because MSCT is a diagnostic technique with a lower cost than more invasive methods used to assess gastric cancer. This converges with the recommendations of the Pan American Health Organization¹⁸, the World Health Organization¹⁹ and the International Agency for Research on Cancer²⁰ for the prevention and control of this disease in order to facilitate the application of treatment methods based on scientific data.

The main objective of this research is to propose a computational approach to automatically detect the morphopathological shape of adenocarcinoma of the stomach. The proposal is based on a sequential design which involves image enhancement, segmentation, and three-dimensional image visualization. After the application of the proposed approach, a detailed analysis, both in a quantitative and a qualitative way is presented, by providing a measure of performance, and the assessment of several qualitative type 2 cancer features.

Methods

The minimum system requirements needed to run the MatLab scripts contained within this study are: 2.2 GB of HDD space for MATLAB only, 4–6 GB for a typical installation, any Intel or AMD x86 processor, 4 GB of memory RAM; no specific graphics card is required.

Image source

The dataset considered in this research was obtained from [The Cancer Genome Atlas–Stomach Adenocarcinoma \(TCGA–STAD\)](#)²¹. The dataset connects cancer phenotypes to genotypes using medical images matched with subjects from TCGA^{22,23}. [Table 1](#) shows the descriptive phenotypes and histological parameters of eight patients from TCGA–STAD with type 2 cancer. The TCGA–STAD dataset is composed of a single series, namely TCGA–STAD–VQ. The eight datasets used correspond with the patients of the series TCGA–STAD–VQ with type 2 cancer.

Phase 1: Image enhancement

The software used in this phase was developed within the framework of the present investigation and corresponds with a MatLab script (MatLab R2012a). This script corresponds with Enhancement Software, and is [available on Zenodo](#)²⁴.

As the gastric mucosa has many folds and is formed by connective tissue that joins the muscle and the mucosa, the abdominal tomography images produced in the interface between the mucous and the contrast agent are, in certain regions, not homogeneous, and consequently the tumor is shown with unclearly differentiated edges.

An enhancement approach is required to improve the adenocarcinoma information with respect to the non-homogeneous background. To correct the non-homogeneities and to enhance the adenocarcinoma, the look-up table (LUT)-based method²⁵ is used. This method has been used to improve confocal microscopy²⁶ and X-ray rotational angiography²⁷ images. The LUT is constructed according to the following procedure:

1. Choose n non-homogeneous images.
2. Determine the frequency percentage vector $f^j = [f_{1024}^j \ f_{2048}^j \ f_{3072}^j \ f_{4095}^j]$ ($1 \leq j \leq n$) for each image in the histogram. These frequencies are associated with the gray level vector, $\mathbf{Level} = [Level_0 \ Level_1 \ Level_2 \ Level_3 \ Level_4] = [0 \ 1024 \ 2048 \ 3072 \ 4095]$.
3. Obtain the average for the frequency percentage vector for all images, $F_{Level} = F_{Level_k} \sum_{j=1}^n f_{Level_k}^j, \forall 0 \leq k \leq 4$, k is a positive integer.
4. Construct a LUT as a transfer function defined by the concatenation of four linear transformations. Each linear function is constructed using $Input_{LUT}^k = Level_k, \forall 0 \leq k \leq 4$ and $Output_{LUT}^k = \sum_{j=0}^k F_{Level_j}, \forall 0 \leq k \leq 4$ as input and output respectively.

[Figure 3](#) shows both LUTs, the original (black) and the constructed using the previous procedure (gray).

Once corrected, the image is smoothed using a Gaussian filter with a spread factor σ . This parameter is set to the standard deviation value of the corrected image. The relationship between corrected and smoothed images is obtained using a simple linear regression model²⁸.

Phase 2: Segmentation

Segmentation was performed using [VolView 3.4](#) for Linux, 64 bit.

Table 1. Parameters of series TCGA–VQ–XXXX.

Case	Gender	Cancer location	T	N	M	Stage
A8DL	Female	Cardia/proximal	T3	N0	M0	IIA
A8E3	Male	Antro/distal	T3	N0	M0	IIA
A8P5	Male	Fundus/body	T3	N0	M0	IIA
A8P8	Female	Fundus/body	T4a	N0	M0	IIB
A8PB	Female	Antro/distal	T3	N0	M0	II
A94U	Male	Antro/distal	T4a	N0	M0	IIB
AA6F	Male	Cardia/proximal	T3	N1	M0	IIB
AA6G	Male	Cardia/proximal	T3	N0	M0	IIA

T, tumor stage; N, lymph node stage; M, metastasis stage.

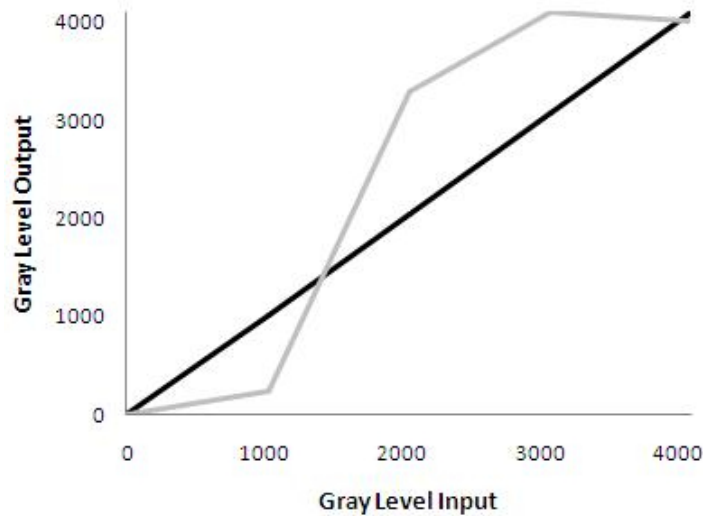


Figure 3. Linear look-up table.

The segmentation is based on a simple linkage region growing technique. The following procedure is used:

1. A voxel is tagged as a seed voxel of a new cluster when its intensity value is lower than the standard deviation of the enhanced image, and it is still unlabeled (the voxel is not associated to any cluster). The procedure is ended when all voxels are labeled.
2. All neighbor voxels of the new cluster are eligible for merging. For each neighbor voxel, every voxel in an 8-neighborhood is considered. The neighbor voxel is joined to the current cluster if i) the neighbor voxel is still unlabeled; and ii) the intervoxel distance of the edge voxel and the neighbor voxel is below the standard deviation of the enhanced image. When the current cluster stops growing, go back to point 1.

The region growing algorithm of the multi-platform application VolView considers two parameters, namely, the neighborhood size for the region growing (l) and scale factor of grouping (τ). The clustering algorithm is applied by varying the value of these parameters in order to tune them.

This procedure is applied to the enhanced image to obtain two regions, the tumor and the background.

Phase 3: Reconstruction of tumor surface

After the segmentation process, the reconstruction of the pathological surface is performed using the **Visualization Toolkit** (VTK-6.3.0)²⁹. VTK is an open-source library available for image processing and 3-D scientific visualization used by many researchers and worldwide developers. The reconstruction algorithm is designed according to an object-oriented computational model, which is developed with the C++ library contained in VTK³⁰. This reconstruction procedure only requires the segmented volume as input parameter.

The tumor wall is reconstructed using the marching cubes algorithm³¹. Marching cubes have long been used as a standard indirect volume-rendering approach to extract iso-surfaces from 3-D volumetric data. The algorithm was developed by Lorensen and Cline³² and has this name because it takes eight neighboring locations simultaneously to constructing an imaginary cube, generating the necessary polygons to reconstruct the surface.

Validation of the segmentation

The validation of the proposed segmentation technique is performed by quantifying the difference between the estimated pathological shape with respect to a ground truth shape, traced by an expert (V.B.). The difference is estimated using the Dice coefficient, which quantifies the degree of overlap between two volumes³³. Another MatLab script (in MatLab version R2012a) was also written within the framework of the present investigation to validate the proposed segmentation approach. Version 1.0 of this script is [available on Zenodo](#)³⁴; its input parameters correspond with the type 2 cancer estimated shape and the ground truth shape.

Results

The results obtained from this research are in part based upon data generated by TCGA Research Network: <http://cancergenome.nih.gov/>.

The MSCT 3-D image of the TCGA-VQ-A8DL dataset is used to illustrate the proposed three-phase approach. The non-homogeneous background correction procedure described in *Phase 1: Image enhancement* is applied to the dataset (**Figure 4**). The background appears to be more homogeneous, whereas the associated type 2 cancer tumor information is enhanced.

The parameter n required for the procedure of images enhancement (*Phase 1: Image enhancement*), which corresponds to the amount non-homogeneous images, is chosen as 20% of the slices

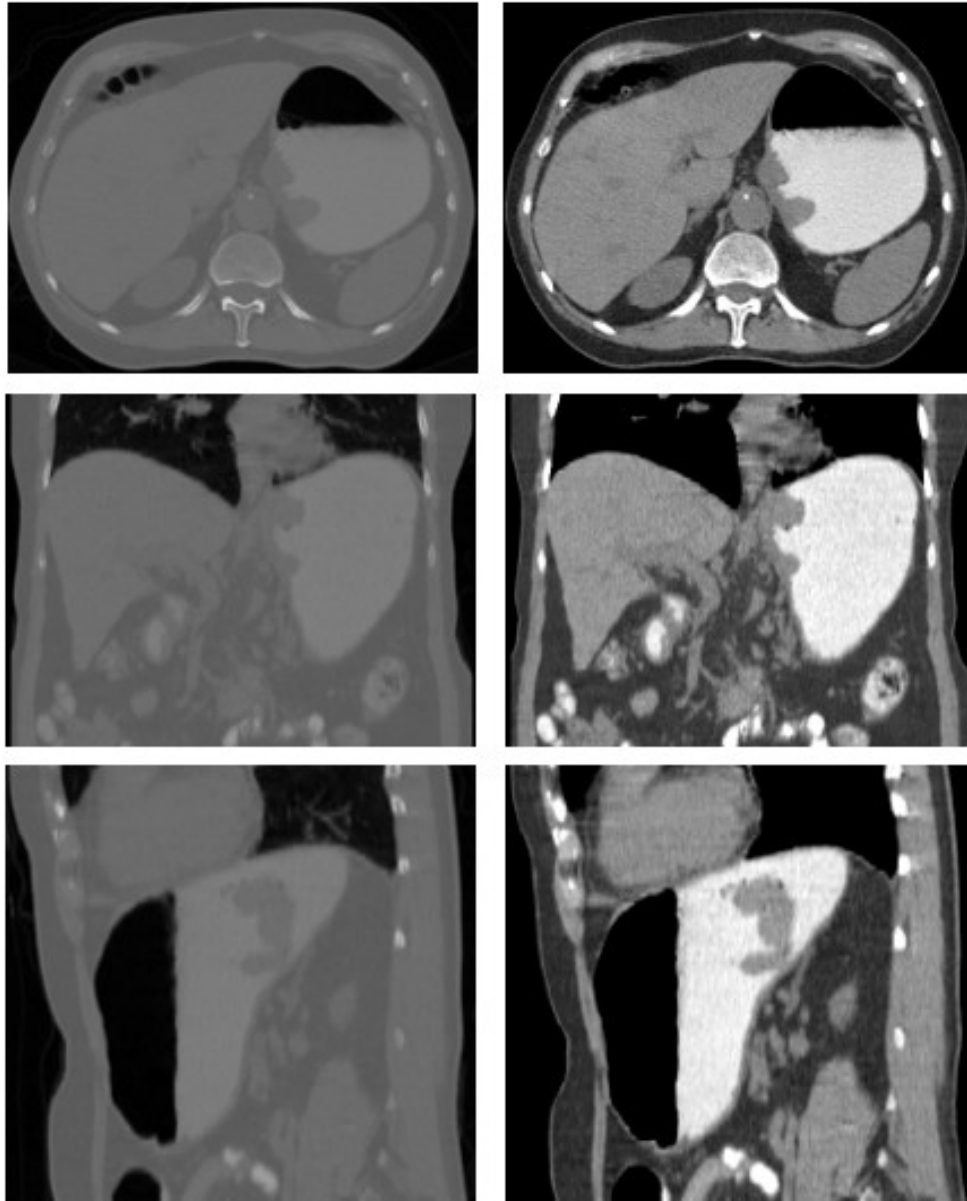


Figure 4. TCGA-VQ-A8DL dataset. First column, original images; second column, corrected images.

of each tomographic volume to be analyzed. The TCGA-VQ-A8DL dataset contains an MSCT volume of $512 \times 512 \times 101$; since the volume has 101 slices, n corresponds to 20 of those slices.

The seed voxel is used to start the region-growing segmentation process. This seed is established in the bi-dimensional image (MSCT slice). A manual process performed by a clinician is applied to locate the volume slice, where the adenocarcinoma area is visually maximized.

In the parameters tuning procedure, for τ , all the values included in the interval $[0, 10]$ with a step size of 0.1 are evaluated, meanwhile l varies between 1 and 20 with step size of 1. For

each set of parameters, the resulting segmented structures are compared with the corresponding structures traced by a clinician. The differences are estimated using the Dice coefficient. The parameters value that maximized the Dice coefficient are chosen for the proposed segmentation method. These same parameters values are considered to segment others dataset.

Figure 5 shows the results of this method applied to the dataset TCGA-VQ-A8DL. In each row, four MSCT slices (the axial anatomical view) are shown in the image volume. The adenocarcinoma contour is indicated by a black dash-dotted line. Regions extracted using the proposed segmentation approach are indicated by white areas.

Figure 6 shows the 3-D reconstruction obtained using the procedure based on the marching cubes algorithm. The input of the reconstruction algorithm is the adenocarcinoma shape, segmented using the procedure based on a region-growing technique. Table 2 shows the volumes quantified from the reconstructions.

The comparison between the segmented structures and the cancer shapes delineated by the clinician is performed based on the Dice coefficient. The Dice coefficient obtained (mean \pm standard deviation) for the eight datasets of the 3-D images is 91.54% \pm 5.26%, with a maximum value of 97.31% and a minimum value of 83.47%. Accordingly, the maximum

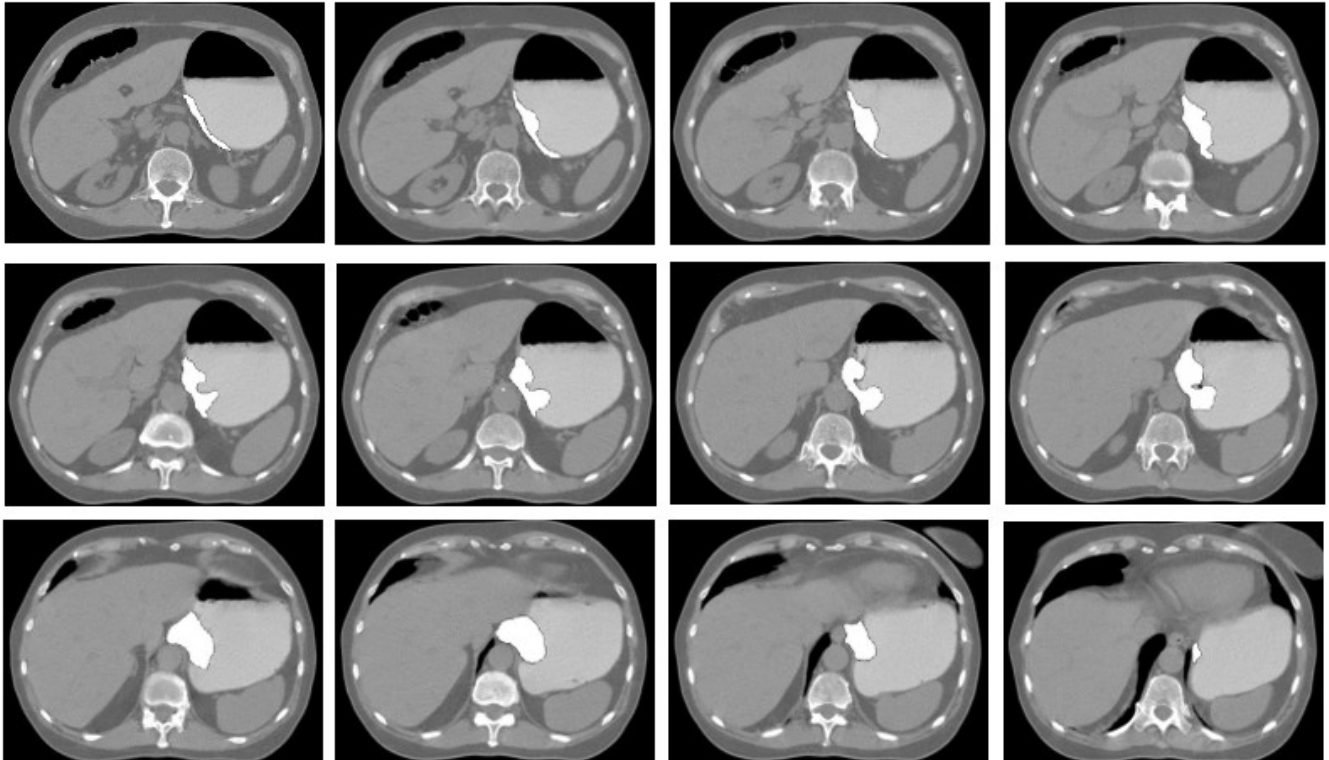


Figure 5. Adenocarcinoma area detection for TCGA-VQ-A8DL dataset.

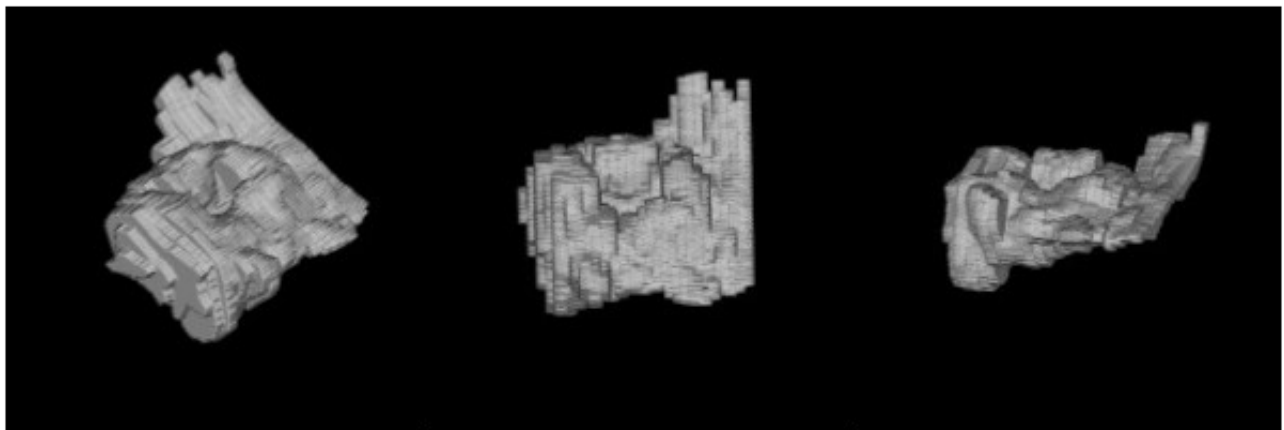


Figure 6. 3-D reconstruction of adenocarcinoma shape of the TCGA-VQ-A8DL dataset.

Table 2. Adenocarcinoma volumes.

Case	Volume, mm ³
A8DL	52.92×10 ³
A8E3	37.12×10 ³
A8P5	24.37×10 ³
A8P8	61.90×10 ³
A8PB	47.43×10 ³
A94U	23.31×10 ³
AA6F	10.37×10 ³
AA6G	36.28×10 ³

estimated error of segmentations corresponds with 16.53%, and the minimum estimated error with 2.69%.

Discussion

The method proposed in this study can be used to generate 3-D segmentation of stomach adenocarcinoma. These segmentations are useful for monitoring the application of cancer treatment methods based on scientific data, since they allow for the calculation of certain clinical quantitative descriptors, such as volume, and for the assessment of several qualitative type 2 cancer features.

The method is tested on eight gastric cancer datasets. The estimated error for all MSCT images is reported. The proposed application for detecting type 2 cancer tumors generates the highest Dice score values.

The calculated volume represents a parameter that is more representative of the real size of all the segmented pathological structure as the descriptor is calculated from a realistic 3-D computational model. This is particularly true as tumor volume is an important indicator of lymph node metastasis in advanced gastric cancer. From Figure 6, several macroscopic features associated with type 2 cancer can be validated, such as: circumscribed, with well-defined borders, and ulcerated.

The segmentations generated by the proposed method can be useful in various scenarios such as:

1. Academic–didactic: Promoting, deepening and potentiating the study of the real pathology.
2. Research: Design and development of robust, automatic and efficient segmentation methods.

3. Clinical: Supporting the planning of therapeutic and surgical processes associated with stomach cancer.

Conclusions

A three-phase approach has been developed based on an image enhancement and region-growing clustering technique for segmenting stomach tumors associated with type 2 cancer. The segmentations obtained are useful for assessing this pathology. In addition, this type of segmentation allows for the development of computational models that allow the planning of virtual surgical processes related to type 2 cancer.

A region-growing clustering technique is controlled by a seed point located in a volume slice, which is propagated to the rest of slices to segment the entire MSCT volumes. The validation of the obtained segmentations shows that the pathological representation obtained using the proposed method exhibits the highest correlation to the type 2 cancer shape traced by a clinician.

In future work, a more complete validation is necessary, considering more large-image datasets, and including a comparison of estimated parameters describing the adenocarcinoma volume with respect to results obtained using other measurement techniques.

Data availability

The TCGA-STAD type 2 stomach cancer dataset series is available from: <https://portal.gdc.cancer.gov/projects/TCGA-STAD>, using the parameters TCGA-VQ-XXXX.

Software availability

Enhancement software available from/archived source code at time of publication: <https://doi.org/10.5281/zenodo.1253039>²⁴.

MatLab script used to compute the Dice coefficient available from/archived source code at time of publication: <https://doi.org/10.5281/zenodo.1289908>³⁴.

License: Creative Commons Attribution-ShareAlike 4.0 International.

Grant information

This work was supported by the Universidad Simón Bolívar, Colombia (grant C2011720117).

Acknowledgements

Authors would like to thank the Universidad Simón Bolívar, Colombia, and the Investigation Dean's Office of Universidad Nacional Experimental del Táchira, Venezuela for their support to this research.

References

1. Rubin GD: **Computed tomography: revolutionizing the practice of medicine for 40 years.** *Radiology.* 2014; **273**(2 Suppl): S45–S74. [PubMed Abstract](#) | [Publisher Full Text](#)
2. Flohr TG, Schaller S, Stierstorfer K, et al.: **Multi-detector row CT systems and image-reconstruction techniques.** *Radiology.* 2005; **235**(3): 756–773. [PubMed Abstract](#) | [Publisher Full Text](#)

3. Ginat DT, Gupta R: **Advances in computed tomography imaging technology.** *Annu Rev Biomed Eng.* 2014; **16**(1): 431–453.
[PubMed Abstract](#) | [Publisher Full Text](#)
4. Park SR, Lee JS, Kim CG, *et al.*: **Endoscopic ultrasound and computed tomography in restaging and predicting prognosis after neoadjuvant chemotherapy in patients with locally advanced gastric cancer.** *Cancer.* 2008; **112**(11): 2368–2376.
[PubMed Abstract](#) | [Publisher Full Text](#)
5. Hallinan JT, Venkatesh SK: **Gastric carcinoma: imaging diagnosis, staging and assessment of treatment response.** *Cancer Imaging.* 2013; **13**(2): 212–227.
[PubMed Abstract](#) | [Publisher Full Text](#) | [Free Full Text](#)
6. Bankman I: **Handbook of Medical Imaging: Processing and analysis.** Academic Press, San Diego, 2000.
[Reference Source](#)
7. Angelini ED, Laine AF, Takuma S, *et al.*: **LV volume quantification via spatiotemporal analysis of real-time 3-D echocardiography.** *IEEE Trans Med Imaging.* 2001; **20**(6): 457–469.
[PubMed Abstract](#) | [Publisher Full Text](#)
8. Nelson TR, Elvins TT: **Visualization of 3D ultrasound data.** *IEEE Comput Graph Appl.* 1993; **13**(6): 50–57.
[PubMed Abstract](#) | [Publisher Full Text](#)
9. Field MJ: **Telemedicine: A Guide to Assessing Telecommunications in Health Care.** Institute of Medicine, National Academy Press, Washington, 1996.
[PubMed Abstract](#) | [Publisher Full Text](#)
10. DICOM: **Digital imaging and communication in medicine DICOM.** NEMA Standards Publication, 1999.
[Reference Source](#)
11. Fu KS, Mui JK: **A survey on image segmentation.** *Pattern Recognit.* 1981; **13**(1): 3–16.
[PubMed Abstract](#) | [Publisher Full Text](#)
12. Duda R, Hart P, Stork D: **Pattern Classification.** Wiley-Interscience, New York, 2000.
[Reference Source](#)
13. Kervrann C, Heitz F: **Statistical deformable model-based segmentation of image motion.** *IEEE Trans Image Process.* 1999; **8**(4): 583–588.
[PubMed Abstract](#) | [Publisher Full Text](#)
14. Mitchell SC, Lelieveldt BP, van der Geest RJ, *et al.*: **Multistage hybrid active appearance model matching: segmentation of left and right ventricles in cardiac MR images.** *IEEE Trans Med Imaging.* 2001; **20**(5): 415–423.
[PubMed Abstract](#) | [Publisher Full Text](#)
15. Borrmann R: **[Geschwulste des margens].** In Henke F, and Lubarsch O, editors, *Handbuch spez pathol anat und hist.* Springer-Verlag, 1926; 864–871.
16. Japanese Gastric Cancer Association: **Japanese classification of gastric carcinoma: 3rd English edition.** *Gastric Cancer.* 2011; **14**(2): 101–112.
[PubMed Abstract](#) | [Publisher Full Text](#)
17. Kajitani T: **The general rules for the gastric cancer study in surgery and pathology. Part I. Clinical classification.** *Jpn J Surg.* 1981; **11**(2): 127–139.
[PubMed Abstract](#) | [Publisher Full Text](#)
18. **Plan of Action for the Prevention and Control of NCDs in the Americas 2013-2019.** Technical Report Washington DC, Pan American Health Organization, 2014.
[Reference Source](#)
19. Seventieth World Health Assembly: **Technical Report Geneva, World Health Organization, Resolutions and Decisions Annexes, 2017.**
20. Sierra MS, Soerjomataram I, Antoni S, *et al.*: **Cancer patterns and trends in Central and South America.** *Cancer Epidemiol.* 2016; **44** Suppl 1: S23–S42.
[PubMed Abstract](#) | [Publisher Full Text](#)
21. Lucchesi FR, Aredes ND: **Radiology Data from The Cancer Genome Atlas Stomach Adenocarcinoma [TCGA-STAD] collection, 2016.** *The Cancer Imaging Archive.*
[Publisher Full Text](#)
22. Clark K, Vendt B, Smith K, *et al.*: **The Cancer Imaging Archive (TCIA): maintaining and operating a public information repository.** *J Digit Imaging.* 2013; **26**(6): 1045–1057.
[PubMed Abstract](#) | [Publisher Full Text](#) | [Free Full Text](#)
23. Jaffe CC: **Imaging and genomics: is there a synergy?** *Radiology.* 2012; **264**(2): 329–331.
[PubMed Abstract](#) | [Publisher Full Text](#)
24. Bravo: **An image enhancement approach.** *Zenodo.* 2018.
<http://www.doi.org/10.5281/zenodo.1253039>
25. Jähne B: **Digital Image Processing-Concepts, Algorithms, and Scientific Applications.** Springer, Berlin, 2 edition, 1993.
[Publisher Full Text](#)
26. Roa F, Bravo A, Valery A: **Automated characterization of bacteria in confocal microscope images.** In *IEEE Computer Society Conference on Computer Vision and Pattern Recognition Workshops*, Anchorage AK, 2008; 1–8.
[Publisher Full Text](#)
27. Bravo A, Medina R, Garreau M, *et al.*: **An approach to coronary vessels detection in x-ray rotational angiography.** In Müller C, Wong S, and La Cruz A, editors, *IV Latin American Congress on Biomedical Engineering*, Springer, 2007; 254–258.
[Publisher Full Text](#)
28. Bravo A, Medina R, Díaz JA: **A clustering based approach for automatic image segmentation: An application to biplane ventriculograms.** In Martínez J, Carrasco J, and Kittler J, editors, *Progress in Pattern Recognition, Image Analysis and Applications*, Springer, 2006; 316–325.
[PubMed Abstract](#)
29. Schroeder W: **The visualization toolkit: an object-oriented approach to 3D graphics.** Kitware Clifton Park, N.Y., 2006.
[Reference Source](#)
30. Avila L, Kitware: **The VTK User's Guide.** Kitware Inc, 2010.
[Reference Source](#)
31. Salomon D: **Computer Graphics and Geometric Modeling.** Springer Publishing Company, Incorporated, 2013.
[Reference Source](#)
32. Lorensen WE, Cline HE: **Marching cubes: A high resolution 3d surface construction algorithm.** *Comput Graph.* 1987; **21**(4): 163–169.
[Publisher Full Text](#)
33. Dice L: **Measures of the amount of ecologic association between species.** *Ecology.* 1945; **26**(3): 297–302.
[PubMed Abstract](#) | [Publisher Full Text](#)
34. Bravo A, Chacón G, Rodríguez J, *et al.*: **Dice coefficient in MatLab (Version V1).** *Zenodo.* 2018.
<http://www.doi.org/10.5281/zenodo.1289908>

Open Peer Review

Current Referee Status:



Version 2

Referee Report 07 November 2018

<https://doi.org/10.5256/f1000research.18013.r40121>



Pablo Guillen-Rondon

Center for Advanced Computing and Data Science, University of Houston, Houston, TX, USA

The authors develop a computational approach to assess the volume of the stomach tumor. The tumor volume is assessed from multi-slice computerized tomography images of patients with type 2 cancer.

First, the approach automatically detects the morphopathological shape of adenocarcinoma of the stomach. In this sense, an image enhancement technique to correct non homogeneities in the image's background is initially considered. After, a regions growing based technique is used to segment the pathology structure. Then, the segmented structure is reconstructed using a marching cubes based algorithm implemented with Toolkit VTK-6.3.0. The proposed method is well explained.

The validation of the proposed approach is performed based on Dice coefficient. The segmented structures are compared with respect to the cancer shapes delineated by the clinician by means this coefficient. From this comparison the authors reported that their computational approach generated high Dice score values, and therefore, low error values.

Is the rationale for developing the new method (or application) clearly explained?

Yes

Is the description of the method technically sound?

Yes

Are sufficient details provided to allow replication of the method development and its use by others?

Yes

If any results are presented, are all the source data underlying the results available to ensure full reproducibility?

Yes

Are the conclusions about the method and its performance adequately supported by the findings presented in the article?

Yes

Competing Interests: No competing interests were disclosed.

I have read this submission. I believe that I have an appropriate level of expertise to confirm that it is of an acceptable scientific standard.

Version 1

Referee Report 28 September 2018

<https://doi.org/10.5256/f1000research.15776.r37689>**Fred Prior** 

Department of Biomedical Informatics, University of Arkansas for Medical Sciences (UAMS), Little Rock, AR, USA

The data used in this study is available by not from the source noted in the paper. The data is available from the Cancer Imaging Archive (<https://wiki.cancerimagingarchive.net/display/Public/TCGA-STAD>) not from the GDC portal as described.

The results section states that DICE coefficients are used for comparison of the machine segmented lesions and human segmented lesions which serve as a model of truth. However the results are reported as: "The error obtained (mean +/- standard deviation) for the eight datasets of the 3-D images is 91.54% +/- 5.26%, with a maximum value of 97.31% and a minimum value of 83.47%. I believe these may be the calculated DICE coefficients and not "error" estimates. Errors between the two segmented lesions this large would indicate complete failure of the technique.

In general the techniques proposed are not novel but rather application of well known and proven techniques to a small data set.

Is the rationale for developing the new method (or application) clearly explained?

Yes

Is the description of the method technically sound?

Yes

Are sufficient details provided to allow replication of the method development and its use by others?

Yes

If any results are presented, are all the source data underlying the results available to ensure full reproducibility?

No

Are the conclusions about the method and its performance adequately supported by the findings presented in the article?

Yes

Competing Interests: No competing interests were disclosed.

Referee Expertise: Imaging informatics and quantitative image analysis including radiomic analysis of cancer lesions.

I have read this submission. I believe that I have an appropriate level of expertise to state that I do not consider it to be of an acceptable scientific standard, for reasons outlined above.

Author Response 28 Sep 2018

Gerardo Chacon, Universidad Simon Bolivar Colombia, Colombia

The authors would like to thank to Dr Fred Prior for his comments about our paper.

The hyperlink to the data source noted in the Version 1 of our paper, is modified to <https://wiki.cancerimagingarchive.net/display/Public/TCGA-STAD> (Cancer Imaging Archive).

In the section **Results**, the last paragraph is modified according to the following text:

The comparison between the segmented structures and the cancer shapes delineated by the clinician is performed based on the Dice coefficient. The Dice coefficient obtained (mean +/- standard deviation) for the eight datasets of the 3-D images is 91.54% +/- 5.26%, with a maximum value of 97.31% and a minimum value of 83.47%. Accordingly, the maximum estimated error of segmentations corresponds with 16.53%, and the minimum estimated error with 2.69%.

Additionally, in the section **Conclusions**, the last paragraph is modified as follows:

In future work, a more complete validation is necessary, considering a more-large image datasets, and including a comparison of estimated parameters describing the adenocarcinoma volume with respect to results obtained using other measurement techniques.

As a final remark, we would like to comment, that the proposed methods for enhancement and segmentation the CT gastric images are conceptually simple and require minimal user interaction, which allows decreasing the intersubjective probability or personal uncertainty introduced by the methods users. And, as verified with the help of the comments of another of the referees the enhancement algorithm is the core of the paper. This algorithm allows to control the non-homogeneities of the abdominal tomography images produced in the interface between the mucous and the contrast agent and consequently, the technique allows to improve the information associated with the unclearly differentiated edges of the tumor. This improvement is achieved by a scheme based on a lookup table. This framework focuses on analyzing the average information of a sample images and then the optimal transfer function useful to diminish the impact of non-homogeneities in the segmentation is constructed. Hence, that we consider our method, conceptually simple and of low computational cost. In this sense, an interesting image processing technique is proposed. And finally, the application of our method to more-large image data sets rather than a research process corresponds to the putting process into practice of our method.

The Authors.

Competing Interests: No competing interests were disclosed.

Referee Report 17 August 2018

<https://doi.org/10.5256/f1000research.15776.r36172>



Jorge Brieva 

Faculty of Engineering, Panamerican University, Mexico City, Mexico

Authors propose a method to assess a stomach tumor volume. They use multi-slice computerized tomography images that present a cancer of type 2.

The method includes three steps: first, an image enhancement to correct non-homogeneities in the background. The enhancement is based on the LUT. Then, the segmentation is carried out by the region growing technique widely used in segmentation problems. Finally, a reconstruction is made using the Toolkit VTK-6.3.0.

The validation uses the Dice coefficient to compare to the clinical manual segmentation.

The method is well explained, however more detail would be suitable to the enhancement algorithm that seems the core of the paper. In particular, in the Equation of Flevel the index j is well used after the sum? More details would be beneficial to understand the method.

In the segmentation method there are some parameters to tune? If it is the case it is suitable to add in the text.

Is the rationale for developing the new method (or application) clearly explained?

Yes

Is the description of the method technically sound?

Yes

Are sufficient details provided to allow replication of the method development and its use by others?

Partly

If any results are presented, are all the source data underlying the results available to ensure full reproducibility?

Yes

Are the conclusions about the method and its performance adequately supported by the findings presented in the article?

Yes

Competing Interests: No competing interests were disclosed.

I have read this submission. I believe that I have an appropriate level of expertise to confirm that it is of an acceptable scientific standard.

Author Response 28 Sep 2018

Gerardo Chacon, Universidad Simon Bolivar Colombia, Colombia

The authors would like to thank to Dr Jorge Brieva for his valuable comments which helped to improve the manuscript.

In order to explain in more detail the enhancement algorithm, this algorithm constitutes the core of our paper, the [procedure for constructing the LUT](#) described in the Version 1 of our paper is modified as follow

1. Choose n non-homogeneous images.
2. Determine the frequency percentage vector $f^j = [f^j_0 f^j_{1024} f^j_{2048} f^j_{3072} f^j_{4095}]$ ($1 \leq j \leq n$) for each image in the histogram. These frequencies are associated with the gray level vector, $Level = [Level_0 \ Level_1 \ Level_2 \ Level_3 \ Level_4] = [0 \ 1024 \ 2048 \ 3072 \ 4095]$.
3. Obtain the average for the frequency percentage vector for all images, $F_Level = F_Level_k = \sum_{j=1}^n f_Level_k^j$, for all $0 \leq k \leq 4$.
4. Construct a LUT as a transfer function defined by the concatenation of four linear transformations. Each linear function is constructed using $Input_LUT^k = Level_k$, for all $0 \leq k \leq 4$ and $Output_LUT^k = \sum_{l=0}^k F_Level_k$, for all $0 \leq k \leq 4$, as input and output, respectively.

On the other hand, in the section: **Phase 2: Segmentation**, the following information about the segmentation phase is added:

The region growing algorithm of the multi-platform application VolView considers two parameters, namely, the neighborhood size for the region growing (l) and scale factor of grouping (τ). The clustering algorithm is applied by varying the value of these parameters in order to tune them.

Additionally, in the section **Results**, the following text is added:

In the parameters tuning procedure, for τ , all the values included in the interval $[0 \ 10]$ with a step size of 0.1 are evaluated, meanwhile l varies between 1 and 20 with step size of 1. For each set of parameters the resulting segmented structures are compared with the corresponding structures traced by a clinicians. The differences are estimated using the Dice coefficient. The parameters value that maximized the Dice coefficient are chosen for the proposed segmentation method. These same parameters values are considered to segment others dataset.

Competing Interests: No competing interests were disclosed.

The benefits of publishing with F1000Research:

- Your article is published within days, with no editorial bias
- You can publish traditional articles, null/negative results, case reports, data notes and more
- The peer review process is transparent and collaborative
- Your article is indexed in PubMed after passing peer review
- Dedicated customer support at every stage

For pre-submission enquiries, contact research@f1000.com

F1000Research