


Article

GlSwi6 Positively Regulates Cellulase and Xylanase Activities through Intracellular Ca²⁺ Signaling in *Ganoderma lucidum*

Ling-Dan Lian, Ling-Yan Shi, Jing Zhu, Rui Liu, Liang Shi, Ang Ren, Han-Shou Yu and Ming-Wen Zhao * 

Key Laboratory of Agricultural Environmental Microbiology, Ministry of Agriculture, Microbiology Department, College of Life Sciences, Nanjing Agricultural University, Nanjing 210095, China;

2017216026@njau.edu.cn (L.-D.L.); 2020216026@njau.edu.cn (L.-Y.S.); jingzhu@njau.edu.cn (J.Z.);

ruiлию@njau.edu.cn (R.L.); shiliang@njau.edu.cn (L.S.); angren@njau.edu.cn (A.R.); yuhans@njau.edu.cn (H.-S.Y.)

* Correspondence: mwzhao@njau.edu.cn; Tel.: +86-25-8439-5602

Abstract: *Ganoderma lucidum* is a white-rot fungus that produces a range of lignocellulolytic enzymes to decompose lignin and cellulose. The mitogen-activated protein kinase (MAPK) pathway has been implicated in xylanases and cellulases production. As the downstream transcription factor of Slt2-MAPK, the function of Swi6 in *G. lucidum* has not been fully studied. In this study, the transcription factor GlSwi6 in *G. lucidum* was characterized and shown to significantly positively regulate cellulases and xylanases production. Knockdown of the GlSwi6 gene decreased the activities of cellulases and xylanases by approximately 31%–38% and 54%–60% compared with those of the wild-type (WT) strain, respectively. Besides, GlSwi6 can be alternatively spliced into two isoforms, GlSwi6A and GlSwi6B, and overexpression of GlSwi6B increased the activities of cellulase and xylanase by approximately 50% and 60%, respectively. Further study indicates that the existence of GlSwi6B significantly increased the concentration of cytosolic Ca²⁺. Our study indicated that GlSwi6 promotes the activities of cellulase and xylanase by regulating the Ca²⁺ signaling. These results connected the GlSwi6 and Ca²⁺ signaling in the regulation of cellulose degradation, and provide an insight for further improvement of cellulase or xylanase activities in *G. lucidum* as well as other fungi.

Keywords: GlSwi6; cellulase; xylanase; Ca²⁺; *Ganoderma lucidum*



Citation: Lian, L.-D.; Shi, L.-Y.; Zhu, J.; Liu, R.; Shi, L.; Ren, A.; Yu, H.-S.; Zhao, M.-W. GlSwi6 Positively Regulates Cellulase and Xylanase Activities through Intracellular Ca²⁺ Signaling in *Ganoderma lucidum*. *J. Fungi* **2022**, *8*, 187. <https://doi.org/10.3390/jof8020187>

Academic Editor: Craig Faulds

Received: 27 January 2022

Accepted: 11 February 2022

Published: 14 February 2022

Publisher's Note: MDPI stays neutral with regard to jurisdictional claims in published maps and institutional affiliations.



Copyright: © 2022 by the authors. Licensee MDPI, Basel, Switzerland. This article is an open access article distributed under the terms and conditions of the Creative Commons Attribution (CC BY) license (<https://creativecommons.org/licenses/by/4.0/>).

1. Introduction

Ganoderma lucidum is an important basidiomycete, and its secondary metabolites have attracted wide attention due to their anticancer and other pharmacological activities [1,2]. *G. lucidum* satisfies its growth and development requirements by degrading a variety of agro-industrial lignocellulosic biomass materials [3]. This degradation is achieved through the production of a series of lignocellulolytic enzymes that decompose lignin and cellulose [4]. Analysis of the *G. lucidum* genome sequencing results revealed that its genome encodes the most abundant group of wood degradation enzymes among all sequenced basidiomycetes [2]. These enzymes mainly digest plant cell wall polysaccharides such as cellulose, hemicellulose and pectin. In addition, analysis of presumed lignocellulose-related secretory proteins in *G. lucidum* also indicated that cellulose, hemicellulose, and lignin-degrading enzymes are necessary for the degradation of lignocellulosic substrates for the generation of biofuel [5]. In addition, the potential use of mushrooms as biotechnological sources of enzyme sources has attracted wide interest. Therefore, it is important to investigate the underlying regulatory mechanism of cellulose-related enzymes in mushrooms.

The lignocellulolytic enzymes produced by microbes are complex carbohydrate active enzymes (CAZy) that contain numerous types of degrading enzymes, which are categorized as cellulases, hemicellulases and lignin-modifying enzymes [6,7]. Among them, both cellulase and hemicellulase belong to the glycoside hydrolase (GH) family, while lignin-modifying enzymes belong to the auxiliary activity (AA) protein family. The GH family

about cellulase includes exoglucanases/cellobiohydrolases (CBH), endoglucanases (EG) and beta-glucosidases (BGL) [8]. Hemicellulases mainly consist of xylanases (XLN) that decompose the xylan skeleton and its side chain [9]. In addition, transcriptional regulation of cellulolytic gene expressions have also been reported to play a crucial role in the control of carbohydrate hydrolysis processes. Several transcriptional factors of cellulose-degrading pathways have been identified in cellulolytic fungi. CreA/Cre1/Cre-1, AceI, AceII, Ace3, and AmyR were reported to play a negative role in the cellulase and xylanase regulatory network [10]. CreA/Cre1/Cre-1 is a regulator of carbon catabolite repression that plays a pivotal role in the activation or inhibition of cellulose deconstruction [11]. AceI, AceII, and Ace3 are activators of cellulase expression [12]. AmyR is a transcriptional activator involved in amylolytic gene expression, which have also been found to affect hemicellulolytic and cellulolytic enzyme production [13], while Xyr1/XlnR1/XlnR-1, ClrB/Clr-2/ManR, and BglR are reported to function as positive transcription factors [10]. Recently, several signaling pathways such as Ca²⁺ and MAPK have also been reported to have regulatory effects on the expression of cellulose-related enzymes. The addition of Ca²⁺ enhanced the cellulase production [14]. Wang's study provided evidence that Ca²⁺ signaling participates in the regulation of cellulase production by increasing intracellular NAD⁺ content [15]. Furthermore, the MAPK pathway in ascomycetes are also reported to be involved in the regulation of cellulolytic enzyme synthesis. The Chk1 MAPK signaling pathway is induced by environmental signals to positively regulate the expression of two cellulase-encoding genes, CBH7 and EG6 in *Cochliobolus heterostrophus* [16]. However, few studies have investigated the involvement of signaling in cellulose degradation, and the associations of different signaling pathways involved in regulating cellulase and xylanase activities are also unclear.

Swi6, a member of the fungi-specific APSES transcription factor family, has been reported to be a key regulator of fungal biological processes [17,18]. Besides, Swi6 is also a target of Mpk1/Slt2 MAPK in *Saccharomyces cerevisiae* [19]. FgSwi6 is required for cellulose utilization in the filamentous fungus *Fusarium graminearum* [20]. Deletion of MoSwi6 caused a significant reduction in the transcription and activities of extracellular enzymes including peroxidases and laccases in *Magnaporthe oryzae* [21]. However, it is unknown whether Swi6 in *G. lucidum* is involved in cellulose degradation, and the relevant mechanism needs further analysis.

This study provides a detailed characterization of the involvement of GlSwi6 in the regulation of cellulase and xylanase activity. The putative transcription factors CreA, AceI, and AmyR were identified to play negative roles in GlSwi6-regulated cellulase synthesis. Furthermore, Ca²⁺ signaling was found to play a crucial role in the cellulase and xylanase activities regulated by GlSwi6. These results provide insight for further improvement of cellulase or xylanase activities in *G. lucidum* as well as other fungi.

2. Materials and Methods

2.1. Fungal Strains and Culture Conditions

G. lucidum ACCC53264 used as the wild-type (WT) strain in this study was obtained from the Agricultural Culture Collection of China. The GlSwi6-silenced strains (Swi6D and Swi6E), SiControl1 and SiControl2 (the empty vector controls), and GlSwi6-overexpression strains (OE6A-18, OE6A-25, OE6B-3, and OE6B-8) were constructed previously [22] and cultured on CYM medium (1% maltose, 2% glucose, 0.2% yeast extract, 0.2% tryptone, 0.05% MgSO₄•7H₂O, and 0.46% KH₂PO₄) at 28 °C. Fermentation experiments were performed in CYM medium using the culture shaker (Hualida Laboratory Equipment, Taicang, China), as previously described [23].

2.2. Enzymatic Activity Assays

Cellulase was induced using cellulose as the sole carbon source through a two-stage cultivation strategy according to a previously described method [24]. The WT, SiControls, GlSwi6-silenced, and GlSwi6-overexpressing strains were first cultured in CYM medium

with shaking for 5 days at 28 °C. Then, the cultures were collected and washed thoroughly using 0.85% (*w/v*) NaCl and transferred to modified MCM medium (1% cellulose, 0.05% MgSO₄•7H₂O, 0.46% KH₂PO₄, 0.5% (NH₄)₂SO₄ and 2 mL/L trace element) containing 1% (*w/v*) cellulose as the sole carbon source with shaking for 2 days at 28 °C. The CaCl₂ (5 mM), LaCl₃ (5 mM) and EGTA (5 mM) were added when cultures were transformed into MCM medium. The culture supernatants were collected for the detection of endoglucanase (CMCase) and xylanase activities with a DNS reagent (10 g/L 3, 5-dinitrosalicylic acid, 20 g/L sodium hydroxide, 200 g/L sodium potassium tartrate, 2 g/L redistilled phenol, and 0.5 g/L sodium sulfite anhydrous) against 1% (*w/v*) carboxymethylcellulose sodium salt (CMC-Na) and 1% (*w/v*) xylan. The mixture was incubated overnight. The following components were added to a 2.0 mL reaction mixture (containing 0.5 mL diluted culture supernatants and 1.5 mL CMC-Na or xylan solution, respectively), and then transferred into a 25 mL tube to detect activities of CMCase or xylanase. They were mixed gently and then the reaction mixture was incubated at 50 °C for 30 min. Three milliliters of DNS reagent were added to stop the reaction. A blank tube (with boiled crude enzyme) was used as a control to correct for the presence of reducing sugars in the crude enzyme samples. The blank tube was placed in boiling water for 10 min, 20 mL of distilled water and 200 µL of reaction mixture were added, and the absorbance was detected at 540 nm with the spectrophotometer (UV-1800, Shimadzu Corporation, Kyoto, Japan). One unit of enzyme activity was defined as the amount of enzyme required to release 1 µmol of glycoside bonds of the substrate per minute under defined assay conditions. Three independent cultures were taken for analysis.

2.3. Free Cytosolic Ca²⁺ Labeling and Detection

The levels and localization of free cytosolic Ca²⁺ in *G. lucidum* strains were monitored with a membrane-permeable compound, Fluo-3 AM (F-1241, Life Technologies Corporation, USA), according to a previous method [25,26]. Mycelia were stained with Fluo-3AM (50 µM) and incubated for 30 min, and then the residual stain was washed with phosphate-buffered saline (PBS) for the final detection with a confocal laser scanning microscope TCS SP2 (Leica, Heidelberg, Germany). The unlabeled Fluo-3AM control cells were also monitored as a control to eliminate the contribution of background fluorescence.

2.4. RNA Extraction and Quantitative Real-Time PCR (qRT-PCR)

Mycelia samples of *G. lucidum* cultivated in the corresponding medium were used for RNA extraction. Total RNA was extracted using RNAiso™ Plus Reagent (TaKaRa, Dalian, China) according to a previously described method [27]. cDNA was synthesized from total RNA using a Prime-Script RT Reagent Kit (TaKaRa) according to the manufacturer's instructions. The levels of gene-specific mRNAs in WT and transformant strains were assessed using qRT-PCR with Eppendorf Mastercycler ep Realplex 2.2 software (Eppendorf, Hamburg, Germany), and 18 S rRNA was used as the internal reference gene. Transcriptional levels of genes in this study were analyzed using the standard curve method and were normalized against the 18 S rRNA gene levels. The transcription levels of all genes were expressed as relative expression levels. The primers used for qRT-PCR are listed in Supplementary Table S1.

2.5. Statistical Analysis

Statistical analysis was carried out using GraphPad Prism version 6.0 (GraphPad Software, San Diego, CA, USA (accessed on 10 February 2022)). Data averaged from three individual experiments are expressed as the mean ± standard error (SE). Error bars present the standard deviations from the means of triplicates. The significant differences between analyzed samples were determined by Tukey's honestly significant difference test (HSD, *p* < 0.05) and indicated by different letters.

3. Results

3.1. Effect of *GISwi6* on Cellulase and Xylanase Activities

To investigate the influence of *GISwi6* on cellulase production, we first assessed the cellulase and xylanase activities of *GISwi6*-silenced strains. As shown in Figure 1A, the cellulase activities of the *GISwi6*-silenced strains, *Swi6D* and *Swi6E*, were 69% and 62% of those of the WT strain, respectively (Figure 1A). Besides, since xylanase is the major hemicellulose enzyme, we used xylanase to measure hemicellulose activities. It was found that xylanase activity was also decreased by approximately 54% and 60% in *Swi6D* and *Swi6E* compared with that of the WT strain (Figure 1B). The transcript levels of genes related to cellulase and xylanase were also examined. Cellulases include cellobiohydrolases (CBH, encoded by *cbh1*, *cbh2*, *cbh3*, *cbh4*), endoglucanases (EG, encoded by *eg1*, *eg2*, *eg3*, *eg4*) and beta-glucosidases (BGL, encoded by *bgl2*). Xylanase include xylanase genes (encoded by *xln1*, *xln2*, *xln3*, *xln4*) in *G. lucidum*. Among these genes, four *cbh* genes (*cbh1*, *cbh2*, *cbh3*, and *cbh4*), one *eg* gene (*eg1*), and five *xln* genes (*xln1*, *xln3*, *xln4*, *xln5*, and *xln6*) were significantly decreased in the *GISwi6*-silenced strains compared with the WT strain (Figure 1E,F). These results suggest that silencing of *GISwi6* leads to a decrease in cellulase and xylanase activities in *G. lucidum*.

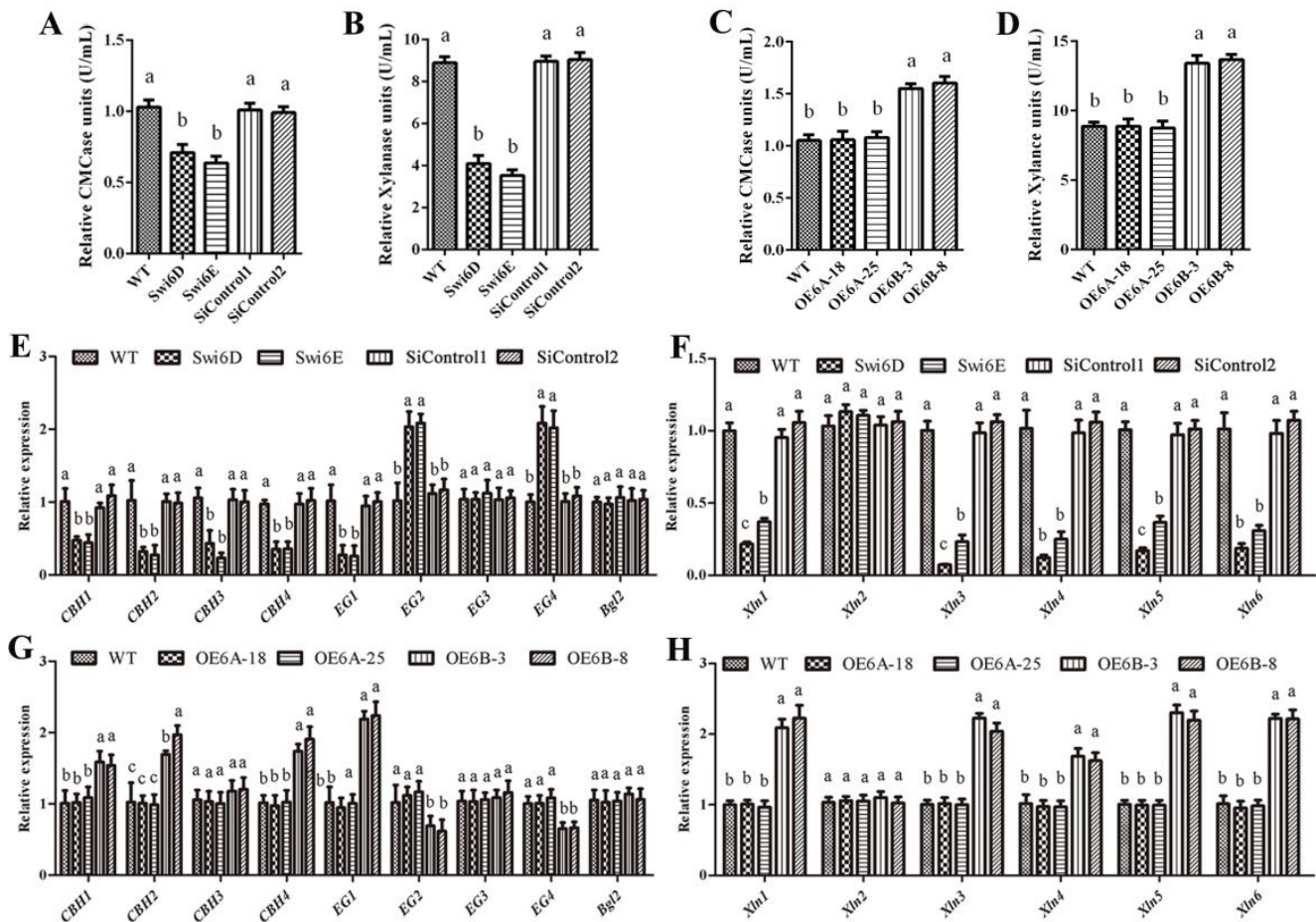


Figure 1. Effect of *GISwi6* on cellulase and xylanase activities. (A,C) CMCase activities in *GISwi6*-silenced (A) and overexpression strains (C). (B,D) Xylanase activities in *GISwi6*-silenced (B) and overexpression strains (D). (E,G) The expression of cellulase genes in *GISwi6*-silenced (E) and overexpression strains (G). (F,H) The expression of xylanase genes in *GISwi6*-silenced (F) and overexpression strains (H). *G. lucidum* cultured in CYM medium for 5 days was transferred to MCM medium using cellulose as a sole carbon source for 24 h. Values are the mean \pm SE ($n = 3$). Different letters indicate significant differences between the strains ($p < 0.05$, Tukey's test).

To further analyze the role of GlSwi6 in cellulase production in *G. lucidum*, we tested the cellulase and xylanase activities of the GlSwi6 overexpression strains. Our previous study found that GlSwi6 is alternatively spliced to generate two isoforms, Glswi6A and Glswi6B [22]. To clarify the effect of GlSwi6 on cellulase production. The GlSwi6A- and GlSwi6B-overexpressing strains were used here for further investigation. As shown in Figure 1, the cellulase and xylanase activities of the GlSwi6B overexpression strains (OE6B-3 and OE6B-8) were increased by approximately 50% and 60%, respectively, compared with those of the WT strain, respectively (Figure 1C,D). Consistently, the expression of three *cbh* genes (*cbh1*, *cbh2*, and *cbh4*), five *xln* genes (*xln1*, *xln3*, *xln4*, *xln5*, and *xln6*), and *eg1* was upregulated in the GlSwi6B overexpression strains (OE6B-3 and OE6B-8) compared with those of the WT strain (Figure 1G,H). However, the enzyme activities and gene expression levels of the OE6A-18 and OE6A-25 strains did not differ from those of the WT. These results indicate that overexpression of GlSwi6B increased the activities of cellulase and xylanase in *G. lucidum*.

3.2. The Effect of GlSwi6 on the Expression of Cellulase and Xylanase Regulator Genes

To further explore the influence of GlSwi6 silencing or overexpression on cellulase and xylanase activities, we explored the expression of cellulase and xylanase regulator genes in GlSwi6 silencing and overexpression strains. The expression of three cellulolytic regulator genes (*creA*, *ace1*, and *amyR*) exhibited significant differences in GlSwi6-silenced strains and GlSwi6B overexpression strains (OE6B-3 and OE6B-8) compared with that of the WT strain. As shown in Figure 2A, silencing of GlSwi6 induced a significant increase of approximately 7.59-fold in the expression of the *creA* gene, 14.13-fold in the *ace1* gene, and 3.52-fold in the *amyR* gene compared with the WT strain. Accordingly, the expression of these genes in the OE6B-3 and OE6B-8 strains decreased to 16.67–21.33% of that in the WT strain. In addition, one of the xylanase regulator genes (*xlnR-1*) was downregulated to approximately 26.83% in the GlSwi6-silenced strains and was upregulated approximately 1.89-fold in the GlSwi6B overexpression strains (OE6B-3 and OE6B-8) compared with the WT strain, while another xylanase regulator gene (*xlnR-2*) was upregulated in the GlSwi6-silenced strains and was downregulated in GlSwi6B overexpression strains (OE6B-3 and OE6B-8) compared with that of the WT strain (Figure 2). In addition, the expression of the cellulolytic regulatory genes *clrB-1* and *clrB-2* showed no significant difference in either the GlSwi6-silenced strains or the GlSwi6B overexpression strains compared with the WT strain. These results indicate that GlSwi6 differentially influences the expression of most cellulolytic regulator genes and xylanase regulator genes in *G. lucidum*. Among them, GlSwi6 exhibited a significant negative correlation with three negative regulators, while positively regulating the *xlnR-1* gene. It is speculated that GlSwi6 might indirectly regulate the expression of the *xlnR-1* gene. Taken together, these results suggest that GlSwi6 positively regulates the expression of cellulase and xylanase regulator genes.

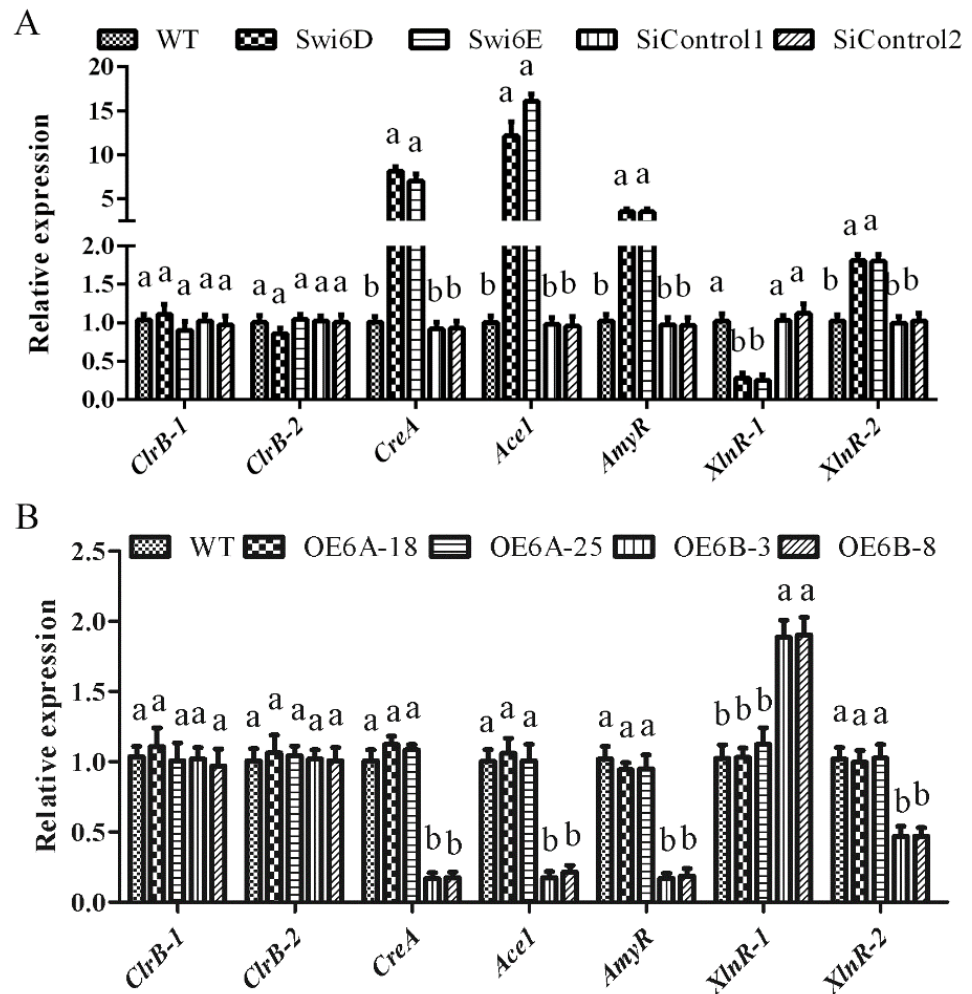


Figure 2. Glswi6 is involved in regulating the expression of cellulase and xylanase regulator genes. *G. lucidum* cultured in CYM liquid medium for 5 days was transferred to MCM medium using cellulose as the sole carbon source for 24 h. (A) The expression of cellulase and xylanase regulator genes in Glswi6-silenced strains. (B) The expression of cellulase and xylanase regulator genes in Glswi6 overexpression strains. The values are the mean ± SE (n = 3). Different letters indicate significant differences between the strains (p < 0.05, Tukey’s test).

3.3. Glswi6 Regulates the Cytosolic Ca²⁺ Content

Previous studies in *G. lucidum* indicated that Ca²⁺ plays an important role in cellulase production [15]. Therefore, we measured the cytosolic Ca²⁺ level in the Glswi6-silenced and overexpression strains using the Ca²⁺-fluorescent probe Fluo-3AM. As shown in Figure 3A, the intensity of Ca²⁺ fluorescence in Glswi6-silenced strains was significantly decreased compared with that of the WT strain. Moreover, the transcriptional regulation of Ca²⁺ signaling by Glswi6 was further examined, including calmodulin (*Cam*), calcineurin (*Cna*), calcineurin-responsive zinc (*Crz*) finger transcription factor, Ca²⁺-permeable channel (*Mid*), phospholipase C (*Plc*), and three Ca²⁺ pumps (*GL21462*, *GL21619*, and *GL28993*) [27]. The results showed that the expression of *Cna*, *Crz*, *Plc*, *GL21462*, and *GL21619* in the Glswi6-silenced strains was significantly downregulated compared with that in the WT strain (Figure S1A). In addition, the Ca²⁺ fluorescence intensity of the Glswi6B overexpression strains (OE6B-3 and OE6B-8) was increased, and the expression levels of *Cna*, *Plc*, and *GL21619* in the Glswi6B overexpression strains (OE6B-3 and OE6B-8) were upregulated compared with those in the WT strain (Figure S1B). These results suggest that Glswi6 positively regulates the intracellular Ca²⁺ content in *G. lucidum*.

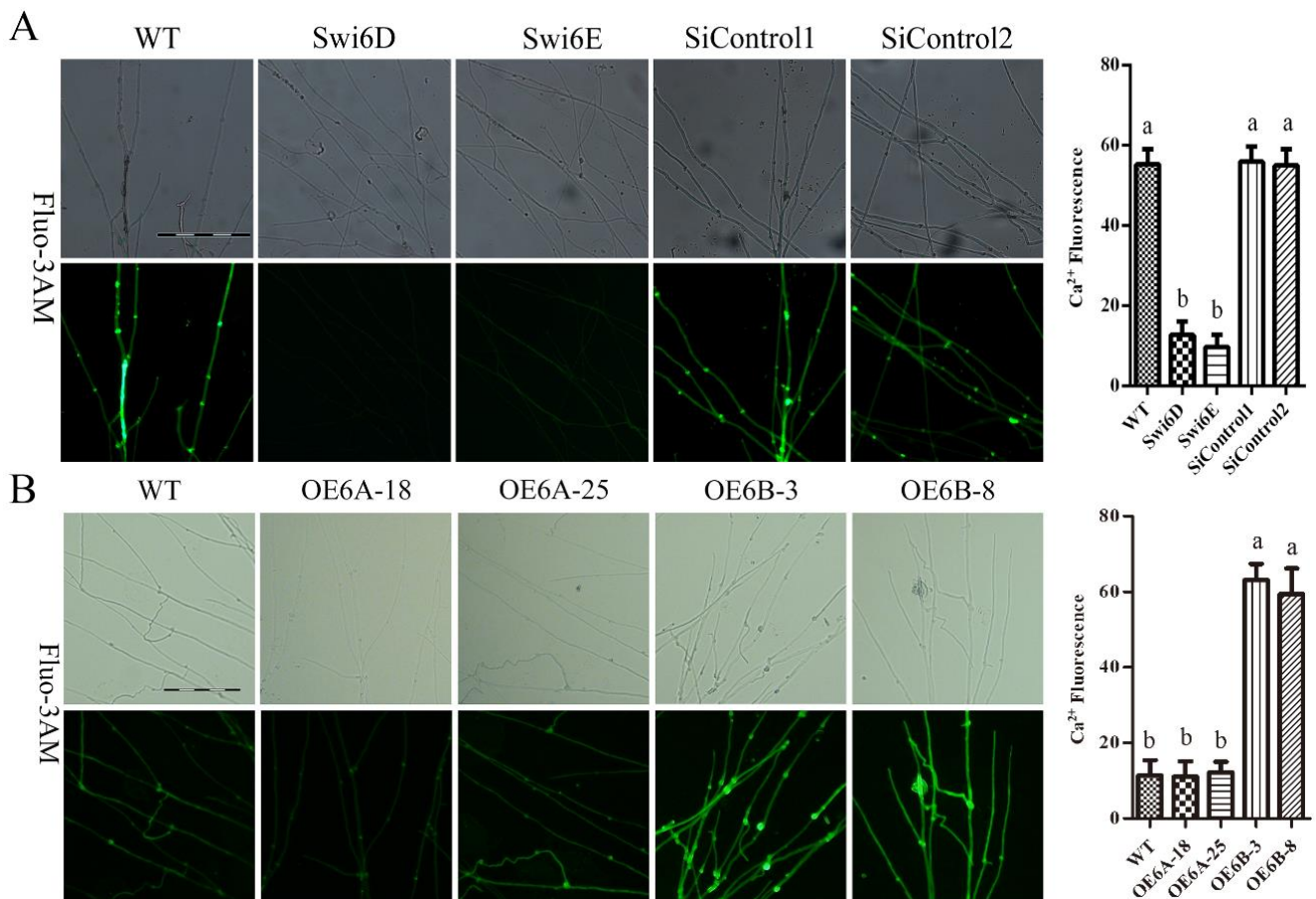


Figure 3. Cytosolic Ca²⁺ content in GlSwi6-silenced and overexpression strains. The GlSwi6-silenced strains were cultured on CYM plates at 28 °C for 5 ~ 7 days. (A) The Fluo-3AM staining (scale bar = 0.1 mm). (B) Analysis of Ca²⁺ fluorescence. The values are the mean ± SE ($n = 3$). Different letters indicate significant differences between the strains ($p < 0.05$, Tukey's test).

3.4. The Cytosolic Ca²⁺ Content Affects the Regulation of Cellulase and Xylanase Activities by GlSwi6

We further explored whether changing the Ca²⁺ content could alter the cellulase and xylanase activities in the GlSwi6 transformants. As shown in Figure 4, silencing GlSwi6 decreased the activities of cellulase and xylanase; however, the decreased cellulase and xylanase activities in GlSwi6-silenced strains could be recovered to the levels in WT strains after the addition of 5 mM CaCl₂. Furthermore, Ca²⁺ antagonists (LaCl₃ and EGTA) were used to confirm the effects of Ca²⁺ content on the cellulase and xylanase activities in GlSwi6-silenced strains. As expected, the activities of cellulase and xylanase in GlSwi6-silenced strains were decreased again after treatment with 5 mM CaCl₂ plus 5 mM LaCl₃ or 5 mM EGTA (Figure 4A,B). In addition, the upregulation of cellulase and xylanase activities in the GlSwi6B overexpression strains (OE6B-3 and OE6B-8) could also be recovered to that in the WT strain when treated with 5 mM LaCl₃ or 5 mM EGTA (Figure 4C,D). These results demonstrated that GlSwi6 enhanced the activities of cellulase and xylanase through the Ca²⁺ signal.

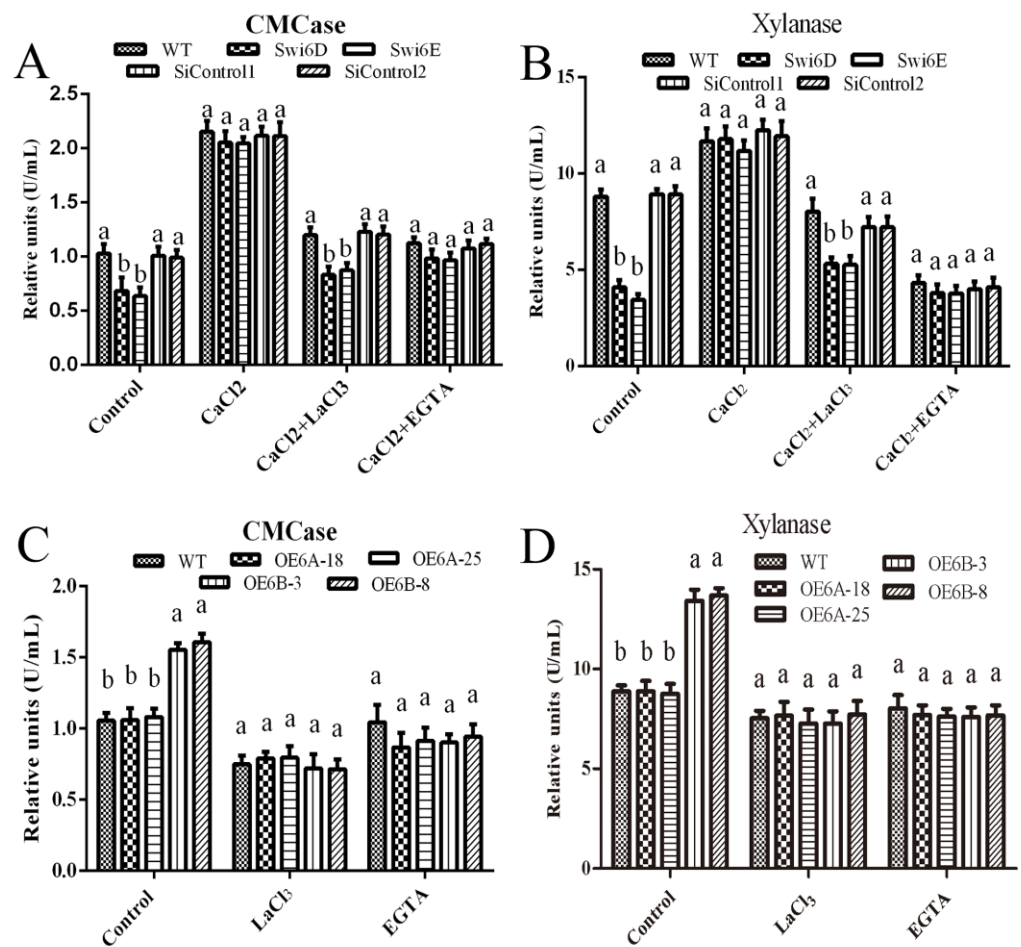


Figure 4. Intracellular Ca^{2+} content is involved in the regulation of cellulase and xylanase activity by G1Swi6. *G. lucidum* cultured in CYM liquid medium for 5 days were transferred to MCM medium using cellulose as the sole carbon source and then treated with 5 mM $CaCl_2$, $LaCl_3$, or EGTA, respectively for 24 h. The CMCase activities in G1Swi6-silenced strains (A,C) and G1Swi6 overexpression strains (B,D). The values are the mean \pm SE ($n = 3$). Different letters indicate significant differences between the strains ($p < 0.05$, Tukey's test).

3.5. Effects of Ca^{2+} on the Expression Levels of Cellulolytic Regulator Genes

To further analyze the effect of Ca^{2+} on cellulase and xylanase activities, we explored the influence of the Ca^{2+} on the expression of cellulolytic regulator genes. A previous study indicated that the expression of *CreA*, *Ace1*, and *AmyR* varied significantly compared to that of other genes, so we tested the expression of these three genes when treated with $CaCl_2$ or a Ca^{2+} antagonist. (Figure 5). Consistent with the changes in cellulase and xylanase activity, the expression levels of *CreA*, *Ace1*, and *AmyR* genes were significantly upregulated in G1Swi6-silenced strains. When treated with 5 mM $CaCl_2$, the trend of the upregulation disappeared, and the addition of 5 mM $CaCl_2$ plus 5 mM $LaCl_3$ or 5 mM EGTA rescued the upregulation in these genes in G1Swi6-silenced strains (Figure 5A–C). In addition, the downregulated of the three genes (*CreA*, *Ace1*, and *AmyR*) in G1Swi6B overexpression strains were also recovered when treated with 5 mM $LaCl_3$ or 5 mM EGTA compared with those of the control strains (Figure 5D–F). Taken together, these results indicate that the cytosolic Ca^{2+} content significantly promotes the transcriptional effect of G1Swi6 on cellulolytic regulator genes.

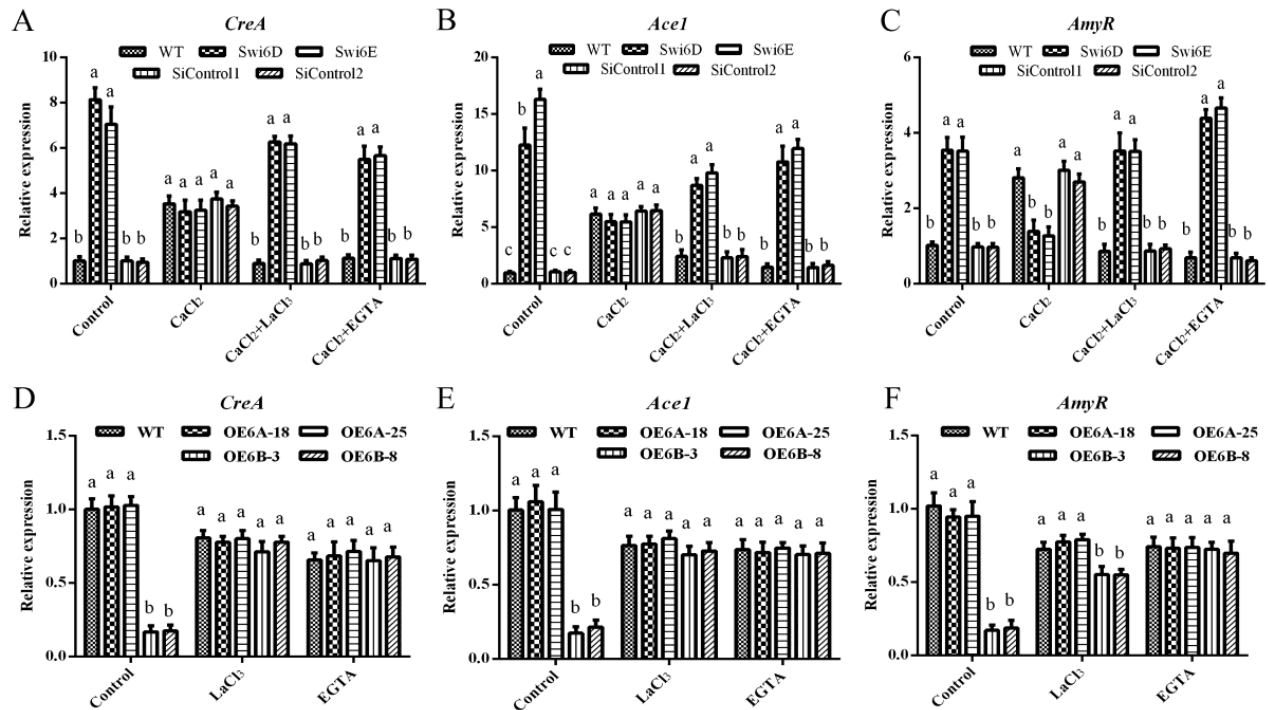


Figure 5. Intracellular Ca²⁺ is involved in regulating the expression of *CreA*, *Ace1*, and *AmyR* by GlSwi6. *G. lucidum* cultured in CYM liquid medium for 5 days were transferred to MM medium using cellulose as the sole carbon source and then treated with 5 mM CaCl₂, LaCl₃, or EGTA, respectively, for 24 h. (A,D) The expression of *CreA* in GlSwi6-silenced strains and GlSwi6 overexpression strains. (B,E) The expression of *Ace1* in GlSwi6-silenced and overexpression strains. (C,F) The expression of *AmyR* in GlSwi6-silenced and overexpression strains. The values are the mean ± SE (n = 3). Different letters indicate significant differences between the strains (p < 0.05, Tukey's test).

4. Discussion

Current studies on the regulation of cellulose degradation focused on the following aspects, enzymes related to cellulose degradation [28], and the regulation of degradation genes by transcription factors [29–31]. In addition, signaling factors have also been found to play an important role in this process [32]. The regulation of cellulases has been extensively studied in *T. reesei* [10]. As an increasing number of cellulose synthesis-related gene functions have been discovered, the process of cellulase synthesis is becoming clearer. The composition of cellulase-related genes has been systematically studied, and all these genes belong to the GH family. However, positions of lignocellulolytic enzymes-related genes are not closely clustered in the genome according to the study by Chen [2], referring to the scaffold information in the genomic data, that only *cbh1*, *cbh3*, *eg1*, and *xlnR-1* were clustered in scaffold1 and *amyR* clustered with *creA* in scaffold29. Furthermore, detection of transcript levels of genes encoding CBH, EG, and XLN showed that GlSwi6 positively regulated the expression of *cbh* genes and most *xln* genes. This suggests that GlSwi6 is involved in regulating the production of cellulase and xylanase. In addition to these genes, transcription factors also play an irreplaceable role in this process. Recent studies in *T. reesei* found Xyr1 in functions as the central regulator of cellulases to control the expression of CAZyme genes by interacting with TrGAL11 [33]. However, the expression of *xyr1* was negatively regulated by the CCR proteins Cre1 and Ace1 [34]. Therefore, the identification of transcription factors involved in cellulases, tuning the positive regulators, is a promising strategy to enhance cellulase expression in fungi. Our study found that GlSwi6 negatively regulated three cellulolytic regulator genes (*creA*, *ace1*, and *amyR*), and these genes play a negative regulatory role in cellulase synthesis. Therefore, the positive effect of GlSwi6 on cellulase and xylanase was further confirmed.

Environmental signaling also causes alterations in the expression of downstream target genes through modifications of transcription factors. To date, the light-mediated response, secondary messenger cyclic AMP (cAMP), MAPK pathways and the Ca²⁺-responsive signaling pathway have been found to mediate cellulase expression [10]. Our study in *G. lucidum* also demonstrated that MAPK pathways are involved in the regulation of cellulase and xylanase activities. Among them, MAPK pathways are the best-characterized signaling pathways in eukaryotes and their functions are conserved in fungi [35]. All *T. reesei* MAPKs were reported to be involved in the cellulase formation, and the yeast FUS3-like Tmk1 and yeast Slt2-like Tmk2 repressed cellulase formation [35,36], and found an indirect connection between cellulase production and MAPK [37]. However, the specific mechanism has not been elucidated. Our previous studies reported that the role of Gls2/MAPK and its downstream target Gls6 are involved in fungal growth and fruiting body development [23]. Here, we found that Gls6 positively regulates the cellulases and xylanases activities in *G. lucidum*. This finding has important implications for further explaining the mechanism by which the MAPK signaling pathway regulates cellulose degradation.

Studies on the signals involved in the regulation of cellulose degradation are limited thus far. The role of the Ca²⁺-responsive signaling pathway was shown to play a role in regulating the expression and secretion of cellulase in *Trichoderma reesei* Rut-C30; the calcineurin-responsive zinc finger transcription factor Crz binding to the promoters of Cbh1 and Xyr1 in response to Ca²⁺ [14]. Further study also found that NAD⁺ mediated the regulation of cellulase genes through modulating cytosolic Ca²⁺ [15]. Ca²⁺ signaling and the MAPK signaling pathways have been found to play an essential role in this process [38]. However, the connection between Ca²⁺ signaling and the MAPK signaling pathway is still unclear. Analysis of the interactions between different signals contributes to a comprehensively understanding of the regulatory network of cellulase and xylanase. Our study found that Gls6 positively regulates cellulase and xylanase activities in Ca²⁺ signaling. Furthermore, we also found that Gls6 increased cytosolic Ca²⁺ content in *G. lucidum*. Analysis of the gene expression of Ca²⁺ signaling showed that genes upstream of Ca²⁺ signaling (*plc* and *GL21619*) were highly activated by Gls6. This demonstrated that Gls6 positively regulated the influx of Ca²⁺. Furthermore, pharmacological experiments, such as exogenous addition of CaCl₂ and the Ca²⁺ antagonist LaCl₃, demonstrated that the Ca²⁺ promotes the regulation of cellulase and xylanase activities by Gls6. This phenomenon is similar to that in the study by Wang [15]. However, the specific regulatory mechanism of Gls6 on cellulase and xylanase activities is still unclear.

It was reported that Swi6 plays essential regulatory functions in cell growth and development, which include the cell cycle and cell wall integrity [39,40]. In the present study, Swi6 was found to have a regulatory effect on cellulase and xylanase activities, which is similar to previous studies; Swi6 is an important regulator of cellulose decomposition and utilization in *Fusarium graminearum* [20]. Gls6 was reported to be alternatively spliced into two different variants, Gls6A and Gls6B, and Gls6B plays a crucial role in the cell wall integrity in *G. lucidum* [22]. In this study, we also found that Gls6B increases cellulase and xylanase activities, while Gls6A shows no effect on these activities. This implies that the different variants of Gls6 might exhibit different physiological functions in *G. lucidum*, which requires further exploration.

In summary, our study reveals the mechanism of the Slt2/MAPK-Gls6-Ca²⁺ signaling pathway underlying cellulose degradation in *G. lucidum*. We conducted a detailed analysis of the progress about Ca²⁺ signaling and MAPK pathways involved in this study, and the regulation of cellulase by these signaling pathways was also found in *G. lucidum*. We further found that the transcription factor Gls6 plays an important role in these two pathways. Combined with relevant progresses and our results, we came to a novel conclusion that the Ca²⁺ signaling cross talk with MAPK pathways to regulate cellulase production. Our study connects different signaling pathways together to form a synergistic regulatory network. This also provides guidance for future integrated effects of different cellulose degradation processes.

Supplementary Materials: The following supporting information can be downloaded at: <https://www.mdpi.com/article/10.3390/jof8020187/s1>, Figure S1: G1Swi6 regulated the expression of genes involved in Ca²⁺ signal; Table S1: Primers used in this study.

Author Contributions: Conceptualization, L.-D.L. and M.-W.Z.; methodology, L.-D.L. and L.-Y.S.; software, L.-D.L.; validation, L.-D.L. and L.-Y.S.; formal analysis, L.-D.L. and M.-W.Z.; investigation, L.-Y.S. and J.Z.; resources, J.Z. and M.-W.Z.; data curation, L.-D.L., R.L., L.S. and A.R.; writing—original draft preparation, L.-D.L. writing—review and editing, M.-W.Z.; supervision, R.L., L.S., H.-S.Y. and A.R.; project administration, J.Z. and M.-W.Z.; funding acquisition, J.Z. and M.-W.Z.; All authors have read and agreed to the published version of the manuscript.

Funding: This research was funded by the China Agriculture Research System of MOF and MARA (CARS20), the National Natural Science Foundation of China (31972059, 31900065), the Postgraduate Research & Practice Innovation Program of Jiangsu Province (KYCX19_0613).

Institutional Review Board Statement: Not applicable.

Informed Consent Statement: Not applicable.

Data Availability Statement: Not applicable.

Conflicts of Interest: The authors declare that the research was conducted in the absence of any commercial or financial relationships that could be construed as a potential conflict of interest.

References

- Boh, B.; Berovic, M.; Zhang, J.; Lin, Z. *Ganoderma lucidum* and its pharmaceutically active compounds. *Biotechnol. Annu. Rev.* **2007**, *13*, 265–301. [[PubMed](#)]
- Chen, S.; Xu, J.; Liu, C.; Zhu, Y.; Nelson, D.R.; Zhou, S.; Li, C.; Wang, L.; Guo, X.; Sun, Y.; et al. Genome sequence of the model medicinal mushroom *Ganoderma lucidum*. *Nat. Commun.* **2012**, *3*, 913. [[CrossRef](#)] [[PubMed](#)]
- Sitarz, A.K.; Mikkelsen, J.D.; Hojrup, P.; Meyer, A.S. Identification of a laccase from *Ganoderma lucidum* CBS 229.93 having potential for enhancing cellulase catalyzed lignocellulose degradation. *Enzym. Microb. Technol.* **2013**, *53*, 378–385. [[CrossRef](#)] [[PubMed](#)]
- Liu, G.; Li, Q.; Shang, N.; Huang, J.W.; Ko, T.P.; Liu, W.; Zheng, Y.; Han, X.; Chen, Y.; Chen, C.C.; et al. Functional and structural analyses of a 1,4-beta-endoglucanase from *Ganoderma lucidum*. *Enzym. Microb. Technol.* **2016**, *86*, 67–74. [[CrossRef](#)]
- Manavalan, T.; Manavalan, A.; Thangavelu, K.P.; Heese, K. Secretome analysis of *Ganoderma lucidum* cultivated in sugarcane bagasse. *J. Proteom.* **2012**, *77*, 298–309. [[CrossRef](#)]
- Liu, G.; Qin, Y.; Li, Z.; Qu, Y. Development of highly efficient, low-cost lignocellulolytic enzyme systems in the post-genomic era. *Biotechnol. Adv.* **2013**, *31*, 962–975. [[CrossRef](#)]
- Li, Y.; Zhang, X.; Xiong, L.; Mehmood, M.A.; Zhao, X.; Bai, F. On-site cellulase production and efficient saccharification of corn stover employing *cbh2* overexpressing *Trichoderma reesei* with novel induction system. *Bioresour. Technol.* **2017**, *238*, 643–649. [[CrossRef](#)]
- Schüle, M. Protein engineering of cellulases. *Biochim. Biophys. Acta* **2000**, *1543*, 239–252. [[CrossRef](#)]
- Juturu, V.; Wu, J.C. Insight into microbial hemicellulases other than xylanases: A review. *J. Chem. Technol. Biotechnol.* **2013**, *88*, 353–363. [[CrossRef](#)]
- Sukumaran, R.K.; Christopher, M.; Kooloth-Valappil, P.; Sreeja-Raju, A.; Mathew, R.M.; Sankar, M.; Puthiyamadham, A.; Adarsh, V.P.; Aswathi, A.; Rebinro, V.; et al. Addressing challenges in production of cellulases for biomass hydrolysis: Targeted interventions into the genetics of cellulase producing fungi. *Bioresour. Technol.* **2021**, *329*, 124746. [[CrossRef](#)]
- Kubicek, C.P.; Mikus, M.; Schuster, A.; Schmoll, M.; Seiboth, B. Metabolic engineering strategies for the improvement of cellulase production by *Hypocrea jecorina*. *Biotechnol. Biofuels.* **2009**, *2*, 19. [[CrossRef](#)]
- Aro, N.; Pakula, T.; Penttila, M. Transcriptional regulation of plant cell wall degradation by filamentous fungi. *FEMS Microbiol. Rev.* **2005**, *29*, 719–739. [[CrossRef](#)] [[PubMed](#)]
- Watanabe, J.; Tanaka, H.; Mogi, Y.; Yamazaki, T.; Suzuki, K.; Watanabe, T.; Yamada, O.; Akita, O. Loss of *Aspergillus oryzae* amyR function indirectly affects hemicellulolytic and cellulolytic enzyme production. *J. Biosci. Bioeng.* **2011**, *111*, 408–413. [[CrossRef](#)] [[PubMed](#)]
- Chen, L.; Zou, G.; Wang, J.; Wang, J.; Liu, R.; Jiang, Y.; Zhao, G.; Zhou, Z. Characterization of the Ca²⁺-responsive signaling pathway in regulating the expression and secretion of cellulases in *Trichoderma reesei* Rut-C30. *Mol. Microbiol.* **2016**, *100*, 560–575. [[CrossRef](#)] [[PubMed](#)]
- Wang, S.; Han, J.; Xia, J.; Hu, Y.; Shi, L.; Ren, A.; Zhu, J.; Zhao, M. Overexpression of nicotinamide mononucleotide adenylyltransferase (*nmnat*) increases the growth rate, Ca²⁺ concentration and cellulase production in *Ganoderma lucidum*. *Appl. Microbiol. Biotechnol.* **2020**, *104*, 7079–7091. [[CrossRef](#)]

16. Lev, S.; Horwitz, B.A. A mitogen-activated protein kinase pathway modulates the expression of two cellulase genes in *Cochliobolus heterostrophus* during plant infection. *Plant Cell* **2003**, *15*, 835–844. [[CrossRef](#)]
17. Ramirez-Zavala, B.; Dominguez, A. Evolution and phylogenetic relationships of APSES proteins from Hemiascomycetes. *FEMS Yeast Res.* **2008**, *8*, 511–519. [[CrossRef](#)]
18. Zhao, Y.; Su, H.; Zhou, J.; Feng, H.; Zhang, K.Q.; Yang, J. The APSES family proteins in fungi: Characterizations, evolution and functions. *Fungal Genet. Biol.* **2015**, *81*, 271–280. [[CrossRef](#)]
19. Levin, D.E. Regulation of cell wall biogenesis in *Saccharomyces cerevisiae*: The cell wall integrity signaling pathway. *Genetics* **2011**, *189*, 1145–1175. [[CrossRef](#)]
20. Liu, N.; Fan, F.; Qiu, D.; Jiang, L. The transcription cofactor FgSwi6 plays a role in growth and development, carbendazim sensitivity, cellulose utilization, lithium tolerance, deoxynivalenol production and virulence in the filamentous fungus *Fusarium graminearum*. *Fungal Genet. Biol.* **2013**, *58–59*, 42–52. [[CrossRef](#)]
21. Qi, Z.; Wang, Q.; Dou, X.; Wang, W.; Zhao, Q.; Lv, R.; Zhang, H.; Zheng, X.; Wang, P.; Zhang, Z. MoSwi6, an APSES family transcription factor, interacts with MoMps1 and is required for hyphal and conidial morphogenesis, appressorial function and pathogenicity of *Magnaporthe oryzae*. *Mol. Plant Pathol.* **2012**, *13*, 677–689. [[CrossRef](#)] [[PubMed](#)]
22. Lian, L.; Zhang, G.; Zhu, J.; Wang, Y.; Wang, L.; Liu, R.; Shi, L.; Ren, A.; Zhao, M. Swi6B, an alternative splicing isoform of Swi6, mediates the cell wall integrity of *Ganoderma lucidum*. *Environ. Microbiol.* **2021**, *23*, 4405–4417. [[CrossRef](#)] [[PubMed](#)]
23. Zhang, G.; Sun, Z.; Ren, A.; Shi, L.; Shi, D.; Li, X.; Zhao, M. The mitogen-activated protein kinase Gls1t2 regulates fungal growth, fruiting body development, cell wall integrity, oxidative stress and ganoderic acid biosynthesis in *Ganoderma lucidum*. *Fungal Genet. Biol.* **2017**, *104*, 6–15. [[CrossRef](#)] [[PubMed](#)]
24. Hu, Y.; Xu, W.; Hu, S.; Lian, L.; Zhu, J.; Shi, L.; Ren, A.; Zhao, M. In *Ganoderma lucidum*, Glsn1 regulates cellulose degradation by inhibiting GICreA during the utilization of cellulose. *Environ. Microbiol.* **2020**, *22*, 107–121. [[CrossRef](#)]
25. Mu, D.; Li, C.; Zhang, X.; Li, X.; Shi, L.; Ren, A.; Zhao, M. Functions of the nicotinamide adenine dinucleotide phosphate oxidase family in *Ganoderma lucidum*: An essential role in ganoderic acid biosynthesis regulation, hyphal branching, fruiting body development, and oxidative-stress resistance. *Environ. Microbiol.* **2014**, *16*, 1709–1728. [[CrossRef](#)]
26. Liu, R.; Shi, L.; Zhu, T.; Yang, T.; Ren, A.; Zhu, J.; Zhao, M.W. Cross Talk between Nitric Oxide and Calcium-Calmodulin Regulates Ganoderic Acid Biosynthesis in *Ganoderma lucidum* under Heat Stress. *Appl. Environ. Microbiol.* **2018**, *84*, e00043-18. [[CrossRef](#)]
27. Zhang, X.; Ren, A.; Li, M.J.; Cao, P.F.; Chen, T.X.; Zhang, G.; Shi, L.; Jiang, A.L.; Zhao, M.W. Heat Stress Modulates Mycelium Growth, Heat Shock Protein Expression, Ganoderic Acid Biosynthesis, and Hyphal Branching of *Ganoderma lucidum* via Cytosolic Ca²⁺. *Appl. Environ. Microbiol.* **2016**, *82*, 4112–4125. [[CrossRef](#)]
28. Amore, A.; Giacobbe, S.; Faraco, V. Regulation of cellulase and hemicellulase gene expression in fungi. *Curr. Genom.* **2013**, *14*, 230–249. [[CrossRef](#)]
29. Li, Z.; Yao, G.; Wu, R.; Gao, L.; Kan, Q.; Liu, M.; Yang, P.; Liu, G.; Qin, Y.; Song, X.; et al. Synergistic and Dose-Controlled Regulation of Cellulase Gene Expression in *Penicillium oxalicum*. *PLoS Genet.* **2015**, *11*, e1005509. [[CrossRef](#)]
30. Coradetti, S.T.; Craig, J.P.; Xiong, Y.; Shock, T.; Tian, C.; Glass, N.L. Conserved and essential transcription factors for cellulase gene expression in ascomycete fungi. *Proc. Natl. Acad. Sci. USA* **2012**, *109*, 7397–7402. [[CrossRef](#)]
31. Hakkinen, M.; Valkonen, M.J.; Westerholm-Parvinen, A.; Aro, N.; Arvas, M.; Vitikainen, M.; Penttila, M.; Saloheimo, M.; Pakula, T.M. Screening of candidate regulators for cellulase and hemicellulase production in *Trichoderma reesei* and identification of a factor essential for cellulase production. *Biotechnol. Biofuels* **2014**, *7*, 14. [[CrossRef](#)] [[PubMed](#)]
32. Schmall, M. The information highways of a biotechnological workhorse—signal transduction in *Hypocrea jecorina*. *BMC Genom.* **2008**, *9*, 430. [[CrossRef](#)] [[PubMed](#)]
33. Zheng, F.; Cao, Y.; Yang, R.; Wang, L.; Lv, X.; Zhang, W.; Meng, X.; Liu, W. *Trichoderma reesei* XYR1 activates cellulase gene expression via interaction with the Mediator subunit TrGAL11 to recruit RNA polymerase II. *PLoS Genet.* **2020**, *16*, e1008979. [[CrossRef](#)] [[PubMed](#)]
34. Mach-Aigner, A.R.; Pucher, M.E.; Steiger, M.G.; Bauer, G.E.; Preis, S.J.; Mach, R.L. Transcriptional regulation of *xyr1*, encoding the main regulator of the xylanolytic and cellulolytic enzyme system in *Hypocrea jecorina*. *Appl. Environ. Microbiol.* **2008**, *74*, 6554–6562. [[CrossRef](#)]
35. Wang, M.; Zhang, M.; Li, L.; Dong, Y.; Jiang, Y.; Liu, K.; Zhang, R.; Jiang, B.; Niu, K.; Fang, X. Role of *Trichoderma reesei* mitogen-activated protein kinases (MAPKs) in cellulase formation. *Biotechnol. Biofuels* **2017**, *10*, 99. [[CrossRef](#)]
36. Wang, M.; Zhao, Q.; Yang, J.; Jiang, B.; Wang, F.; Liu, K.; Fang, X. A mitogen-activated protein kinase Tmk3 participates in high osmolarity resistance, cell wall integrity maintenance and cellulase production regulation in *Trichoderma reesei*. *PLoS ONE* **2013**, *8*, e72189.
37. de Paula, R.G.; Antonieto, A.C.C.; Carraro, C.B.; Lopes, D.C.B.; Persinoti, G.F.; Peres, N.T.A.; Martinez-Rossi, N.M.; Silva-Rocha, R.; Silva, R. The Duality of the MAPK Signaling Pathway in the Control of Metabolic Processes and Cellulase Production in *Trichoderma reesei*. *Sci. Rep.* **2018**, *8*, 14931. [[CrossRef](#)]
38. Hernández-Ortiz, P.; Espeso, E.A. Phospho-regulation and nucleocytoplasmic trafficking of CrzA in response to calcium and alkaline-pH stress in *Aspergillus nidulans*. *Mol. Microbiol.* **2013**, *89*, 532–551. [[CrossRef](#)]

39. Sidorova, J.; Breeden, L. Analysis of the SWI4/SWI6 protein complex, which directs G1/S-specific transcription in *Saccharomyces cerevisiae*. *Mol. Cell Biol.* **1993**, *13*, 1069–1077.
40. Kim, K.Y.; Truman, A.W.; Caesar, S.; Schlenstedt, G.; Levin, D.E. Yeast Mpk1 cell wall integrity mitogen-activated protein kinase regulates nucleocytoplasmic shuttling of the Swi6 transcriptional regulator. *Mol. Biol. Cell* **2010**, *21*, 1609–1619. [[CrossRef](#)]