

Trypanosoma cruzi-infected triatomines and rodents co-occur in a coastal island of northern Chile

Ricardo Campos-Soto¹, Gabriel Díaz-Campusano¹, Nicol Quiroga², Catalina Muñoz-San Martín^{3,4}, Ninette Rives-Blanchard¹ and Fernando Torres-Pérez¹

¹Instituto de Biología, Facultad de Ciencias, Pontificia Universidad Católica de Valparaíso, Valparaíso, Chile

²Departamento de Ciencias Ecológicas, Facultad de Ciencias, Universidad de Chile, Santiago, Chile

³Núcleo de Investigaciones Aplicadas en Ciencias Veterinarias y Agronómicas, Campus Maipú, Universidad de Las Américas, Santiago, Chile

⁴Departamento de Ciencias Biológicas Animales, Facultad de Ciencias Veterinarias y Pecuarias, Universidad de Chile, Santiago, Chile

ABSTRACT

Trypanosoma cruzi, the cause agent of Chagas disease, is transmitted mainly by blood-feeding insects of the subfamily Triatominae. The *T. cruzi* life cycle alternates between triatomines and mammalian hosts, excluding birds and reptiles. Triatomines of *Mepraia* genus are wild vectors of *T. cruzi* in Chile. *Mepraia* specimens infected with *T. cruzi* have been detected in Pan de Azúcar and Santa María islands. The most common vertebrates that inhabit these islands are birds and reptiles, and it is unknown whether small mammals are present. Consequently, it is relevant to know whether there are any *T. cruzi*-infected small mammals on those islands to elucidate the *T. cruzi* cycle. To clarify this crossroads, islands of northern Chile were explored to determine if *T. cruzi*-infected triatomines and rodents co-occur in islands of northern Chile. *T. cruzi* DNA was detected by conventional and real-time PCR in three islands: on Santa María and Pan de Azúcar islands *T. cruzi* was detected in *Mepraia* sp samples, while on Pan de Azúcar (6.1%) and Damas islands (15%) was detected in the rodent *Abrothrix olivacea*. We show for the first time in Chile the occurrence of insular rodents infected with *T. cruzi*, and a complete *T. cruzi* life cycle in a coastal island. Our results provide new insights to understand the *T. cruzi* infection in the wild cycle.

Subjects Ecology, Entomology, Parasitology, Zoology, Infectious Diseases

Keywords *T. cruzi* reservoir in islands, Island *T. cruzi* cycle, Island *T. cruzi* hosts, *Mepraia*, Insular small mammals, Hemiptera:Reduviidae, *Trypanosoma cruzi*, *T. cruzi* life cycle

INTRODUCTION

Trypanosoma cruzi is the cause agent of Chagas disease, one of the main zoonotic diseases mediated by vectors in America. This parasite is transmitted principally by blood-feeding bugs of the subfamily Triatominae. The *T. cruzi* life cycle circulates among triatomines and several mammalian host species while birds and reptiles still are considered refractory to *T. cruzi* infection (Kierszenbaum, Ivanyi & Budzko, 1976; Urdaneta-Morales & McLure, 1981). *Mepraia* is a genus (Mazza, Gajardo & Jörg, 1940) of Triatominae endemic to arid and semiarid regions of Chile; it plays an important role in the wild cycle of *T. cruzi*

Submitted 11 June 2020
Accepted 26 August 2020
Published 14 October 2020

Corresponding author
Ricardo Campos-Soto,
ricardo.campos.s@pucv.cl

Academic editor
Claudio Lazzari

Additional Information and
Declarations can be found on
page 11

DOI 10.7717/peerj.9967

© Copyright
2020 Campos-Soto et al.

Distributed under
Creative Commons CC-BY 4.0

OPEN ACCESS

transmission, and its species are potential vectors for humans ([Botto-Mahan et al., 2008](#); [Campos-Soto et al., 2016](#)).

Three species are currently included in the genus *Mepraia*: *M. gajardoi*, *M. parapatrica* and *M. spinolai* ([Frias, Henry & Gonzalez, 1998](#); [Frias-Lasserre, 2010](#)). The first two inhabit coastal areas, while *M. spinolai* inhabits coastal and interior valleys. *M. parapatrica* is distributed in the coastal desert in an area intermediate between those of *M. spinolai* and *M. gajardoi* ([Frias-Lasserre, 2010](#); [Campos et al., 2013](#)). Island populations of *M. parapatrica* have been reported inhabiting Pan de Azúcar Island in the Atacama Region ([Sagua et al., 2000](#); [Frias-Lasserre, 2010](#)). [Sagua et al. \(2000\)](#) suggested that triatomines from Pan de Azúcar Island feed mainly on seabirds (78%), marine mammals (15%) and reptiles (7%). Individuals of *Mepraia* sp. were also reported in Santa María Island in the Antofagasta Region ([Rives-Blanchard et al., 2017](#)).

The presence of triatomines infected with *T. cruzi*, as well as mixed infections with more than one *T. cruzi* Discrete Typing Unit (DTU), were reported in both islands ([Rives-Blanchard et al., 2017](#)). Mixed infections are more common in ecotopes with high infection rate or high diversity of mammals that harbor different *T. cruzi* lineages ([Campos-Soto et al., 2016](#)). However, the most frequent vertebrates that inhabit both islands are lizards, seabirds and few marine mammals such as seawolf, sea otters and migratory cetaceans (R. Campos-Soto, 2018, field observations of this study). Small mammals inhabiting these islands are unknown, despite their potential major role in the *T. cruzi* life cycle. Given that there are two islands with infected bugs, are there any *T. cruzi*-infected small mammals on those islands? Therefore, sampling insular triatomines and small mammals as possible reservoirs of *T. cruzi* in coastal islands of northern Chile is key to clarify this question and the *T. cruzi* life cycle. We studied two major islands in the north of Chile (Pan de Azúcar and Santa María) together with three additional islands in which hosts of *T. cruzi* are unknown without previous infection studies. The evidence provided by this study offers new opportunities to examine the *T. cruzi* life cycle in coastal islands of northern Chile.

MATERIALS & METHODS

Areas of small mammal and triatomine collections

Small mammals and *Mepraia* individuals were collected during the summer (2017 to 2019) in five coastal islands of northern Chile: Santa María Island (distant site 1.9 km from the continent), in Antofagasta Region; Pan de Azúcar Island (distant site 1.8 km from the continent), in Pan de Azúcar National Park, Atacama Region; Chañaral Island (distant site 8.5 km from the continent), in Atacama Region; Damas Island (in a site at 5.5 km from the continent) and Choros Island (distant site 8.6 km from the continent) in Coquimbo Region. The last three islands are included in the Pingüino de Humboldt National Park. Localities and their geographical locations are shown in [Fig. 1](#) and [Table 1](#). Only on Chañaral Island two field activities were carried out.

Small mammal and triatomine sampling

Insular rodents were caught with standard Sherman traps (8 × 9 × 23 cm). Trapping effort was 100 traps/night and conducted for two nights at each site. This sampling design

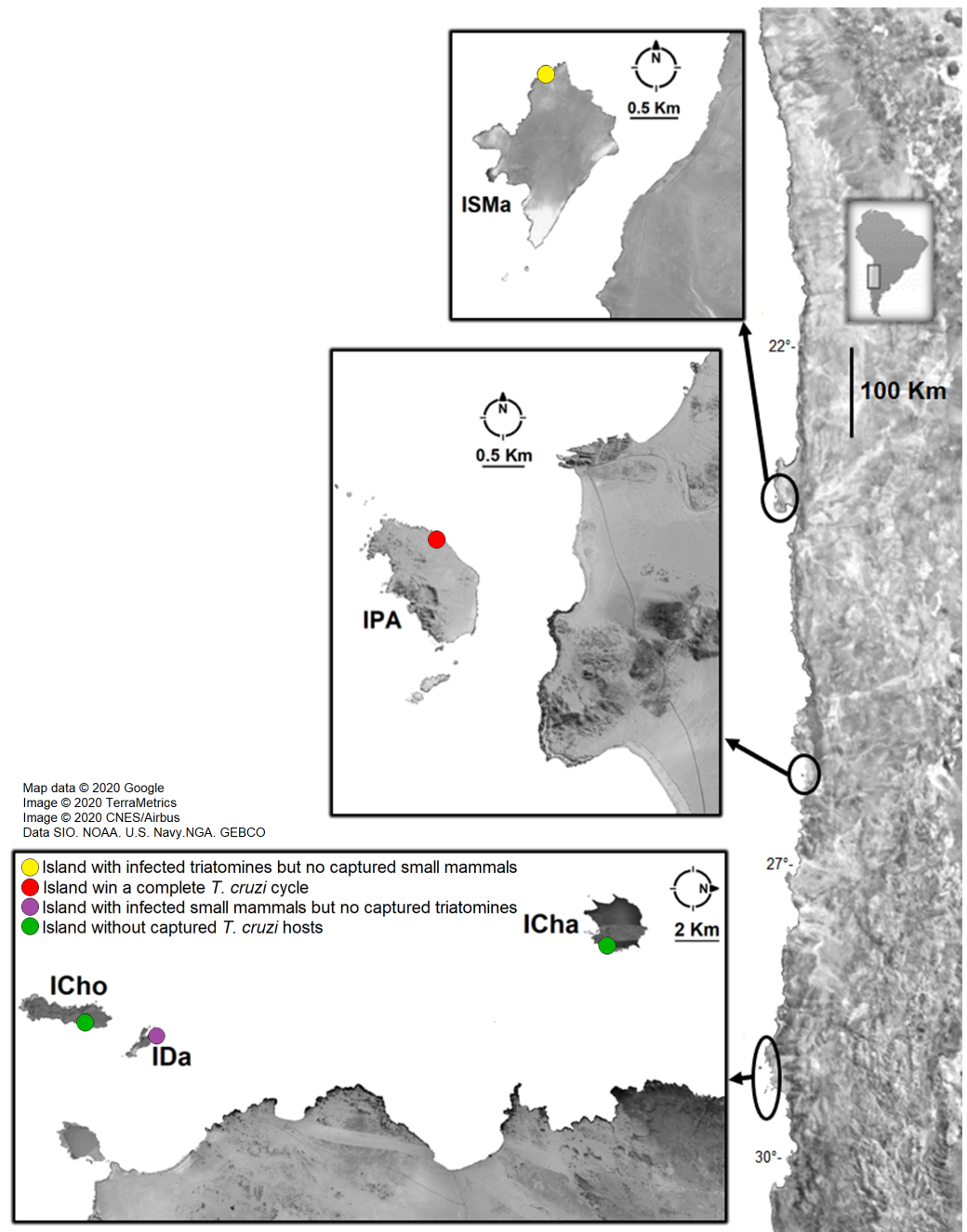


Figure 1 Sample localities of small mammal and triatomine collection. ISMa: Santa María Island, IPA: Pan de Azúcar Island, ICha: Chañaral Island, ICho: Choros Island, IDa: Damas Island. Attributions: Map data©2020 Google, Image ©2020 TerraMetrics, Image©2020 CNES/Airbus, Data SIO, NOAA, US Navy, NGA, GEBCO. Map was modified by illustrations purposes.

Full-size DOI: [10.7717/peerj.9967/fig-1](https://doi.org/10.7717/peerj.9967/fig-1)

was previously shown successful to capture small mammals (*Boric-Bargetto et al., 2016*). A mixture of oats (900 grs) and vanilla essence (150 ml) was used as bait, which have been used in several studies with efficient results (*Torres-Pérez et al., 2004; Boric-Bargetto*

Table 1 Collection sites in islands and *Trypanosoma cruzi* infections in small mammals and triatomines by kDNA conventional PCR and satDNA real-time PCR.

Island	Latitude/longitude	Host species	ID Host	kDNA PCR	SatDNA qPCR		
Santa María	23°25'51"S/70°36'31"W	Smam. not found	–	–	–		
			Triat. <i>Mepraia</i> sp	1isma	+	(-)	
					2isma	+	+
					3isma	+	+
					4isma	+	+
					5isma	(-)	+
					7isma	(-)	+
					9isma	+	+
					10isma	+	(-)
					12isma	+	+
					14isma	+	+
					16isma	+	+
					18isma	(-)	+
					22isma	+	+
					23isma	+	+
					26isma	(-)	+
					27isma	(-)	+
			Inf. rate	11/38 (28.9%)	14/38 (36.8%)		
Pan de Azúcar	26°9'6"S/70°41'7"W	Smam. <i>Abrothrix olivaceus</i>	8Aipa	+	+		
			25Aipa	+	+		
			Inf. rate	2/33 (6.1%)	2/33 (6.1%)		
				Triat. <i>Mepraia parapatrica</i>	1ipa	+	+
					2ipa	+	+
					5ipa	(-)	+
					6ipa	+	+
					7ipa	+	(-)
					8ipa	(-)	+
					9ipa	(-)	+
					10ipa	(-)	+
					15ipa	(-)	+
					17ipa	(-)	+
					19ipa	(-)	+
					23ipa	(-)	+
					26ipa	(-)	+
					29ipa	+	(-)
		40ipa	+	(-)			
			Inf. rate	6/59 (10.17%)	12/59 (20%)		
Chañaral	29°2'17"S/71°34'8"W	Smam. <i>Thylamys elegans</i>		0/9	0/7		
		Triat. not found	–	–	–		
Damas	29°13'49"S/71°31'47"W	Smam. <i>Abrothrix olivaceus</i>	12ida	+	+		

(continued on next page)

Table 1 (continued)

Island	Latitude/longitude	Host species	ID Host	kDNA PCR	SatDNA qPCR
			18ida	+	+
			21ida	+	+
			Inf. rate	3/20 (15%)	3/20 (15%)
Choros	29°2'17"S/71°34'8"W	Triat. not found	–	–	–
		Smam. not found	–	–	–
		Triat. not found	–	–	–

et al., 2012). Small mammals were anesthetized in the field with isoflurane and 0.2 ml of blood was sampled in a field laboratory. Fresh blood samples were received in a cryotube and conserved in a liquid nitrogen container. Blood samples were taken only from adult rodents; juvenile and pregnant females were released. The captured rodents were marked with a temporal nontoxic-highlighter and released once they were well awake and recovered. Triatomines were collected passively as described in [Campos-Soto, Torres-Pérez & Solari \(2015\)](#) by qualified personnel, when this method was unsuccessful triatomines were collected actively by lifting stones in rock piles and nests. Captured insects were transported to the laboratory and maintained in a climate chamber at 27 ° C with a relative humidity of 50% and a 14:10 h light:dark photoperiod. Then the complete gut of triatomines was dissected and used for DNA extraction.

Ethics statement

All individuals were manipulated following the standard bioethics and biosafety protocols proposed by the American Society of Mammalogists ([Sikes, 2016](#)). Sampling procedures were authorized by the Servicio Agrícola y Ganadero (resolution number: 8353), Corporación Nacional Forestal from Atacama Region (permit number: 049/2017) and Coquimbo Region (permit number: 22/2019). We appreciate the logistical help was provided by Pan de Azúcar National Park and Pingüino de Humboldt National Reserve administrators and their park rangers. The research project that includes this study was approved by the Bioethic and Biosecurity Committee of the Pontificia Universidad Católica de Valparaíso (permit number: BIOEPUCV-A98b-2017).

DNA extraction from triatomines and blood of small mammals

DNA was extracted from blood samples and intestinal contents of triatomines using the DNeasy[®] Blood & Tissue kit (QIAGEN). The protocol was carried out according to the manufacturer's instructions; the DNA was eluted twice with 100 µL of elution buffer. All samples were co-extracted with 100 pg of a sequence of *Arabidopsis thaliana* used as a heterologous internal amplification control (IAC) as previously described in [Mc Cabe et al. \(2019\)](#) to discount loss of DNA or carryover of polymerase chain reaction (PCR) inhibitors.

Kinetoplast DNA conventional PCR assays

Assays were performed for all samples using kinetoplast DNA (kDNA) primers 121 (AAATAATGTACGGGKAGATGCATGA) and 122 (GGTTCGATTGGGGTTGGTG-TAATATA) ([Wincker et al., 1994](#)) and the polymerase fast PCR Master Mix SapphireAmp[®]

(Takara). Cycling conditions were 30 s at 94 °C, followed by 40 cycles at 94 °C for 30 s, 55 °C for 30 s and 72 °C for 1 min according to Takara manufacturer's instructions in a Bioer model TC-96/G/H(b)C LifeEco[®] thermocycler. Verification of amplification of a variable region of 330 bp of minicircle kDNA was assessed by 2% agarose gel electrophoresis. Each sample was tested twice to confirm the infection with *T. cruzi*; the sample was considered infected with *T. cruzi* when at least one of the two amplifications resulted positive.

Satellite DNA real-time PCR assays

Assays were performed using *T. cruzi* nuclear satellite DNA (satDNA) primers Cruzi 1 (ASTCGGCTGATCGTTTTCGA) and Cruzi 2 (AATTCCTCCAAGCAGCGGATA) (Piron *et al.*, 2007) in a final volume of 20 µL containing 5 µL DNA template as previously described in Muñoz-San Martín *et al.* (2020). Each sample was tested in duplicate.

Parasite standard calibration curve

T. cruzi DNA standards for absolute quantification were obtained from 10⁵ parasite equivalents/mL (par-eq/mL) of clonal reference strains Dm28c (TcId) and Y (TcII) and 10-fold serial dilutions were performed with nuclease-free water (range between 10⁵ and 10¹ par-eq/mL) as previously described in Muñoz-San Martín *et al.* (2020).

Heterologous internal amplification control qPCR Assays

Assays were performed in blood samples using primers IAC Fw (5'ACCGTCATGGAACAG CACGTA 3') and IAC Rv (5' CTCCCGCAACAAACCCTATAAAT 3') Duffy *et al.*, 2013 at a final concentration of 0.2 µM and at a melting temperature of 58 °C as previously described in (Mc Cabe *et al.*, 2019). Quantification of the parasite equivalents from DNA samples was calculated considering the amplification curve of standard *T. cruzi* DNA and the results were normalized according to the heterologous IAC results.

Genotyping assays

Four DTU real-time PCR genotyping assays were performed for mammal samples positive for *T. cruzi* (Muñoz Martín, Apt & Zulantay, 2017). Detection of TcI, TcII, TcV, and TcVI was performed using the same primers, concentrations, and controls as previously described in (Muñoz-San Martín *et al.*, 2018). The other assay conditions, including the cycling profile, are described above. Controls were always included in each reaction and each sample was tested in duplicate.

RESULTS

Small mammal and triatomine collection

Small mammals were captured in three islands (Figs. 1 and 2, Table 1). In Pan de Azúcar Island, 49 *Abrothrix olivacea* (Sigmodontinae) were captured in one sampling night; 33 blood samples were obtained. In Chañaral Island, nine mouse opossums of the species *Thylamys elegans* (Didelphidae) were captured in two sampling nights in the first field activity (Fig. S1), obtaining nine blood samples. In Damas Island, 48 *Abrothrix olivacea* were captured in two sampling nights, obtaining 20 blood samples (Table 1, Fig. 2). No small mammals were found in Santa María and Choros Islands. *Mepraia* triatomines were

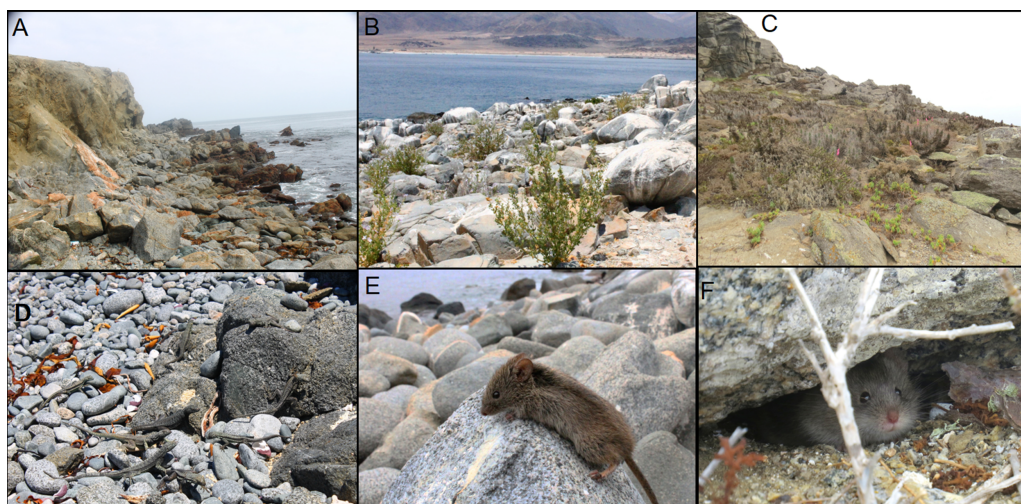


Figure 2 Sampling sites on islands with detected *Trypanosoma cruzi* hosts. (A) Santa María Island. (B) Pan de Azúcar Island. (C) Damas Island. (D) high abundance of *Microlophus atacamensis* on Santa María Island. (E) *Abrothrix olivacea* from Pan de Azúcar Island. (F) *A. olivacea* from Damas Island. Photos A, B, D and E credit: Ricardo Campos-Soto, photos C and F credit: Javier Cruz.

Full-size DOI: 10.7717/peerj.9967/fig-2

captured in Santa María Island ($N = 38$) and Pan de Azúcar Island ($N = 59$); no triatomines were found in the other three islands. Collected small mammals and triatomines for each island and their geographical coordinates are detailed in [Table 1](#) and [Fig. 1](#).

Kinetoplast DNA conventional PCR assays

T. cruzi kDNA in small mammals was detected in two *Abrothrix olivacea* in Pan de Azúcar Island, representing an infection rate of 6.06%. No infected *Thylamys elegans* were found in Chañaral Island, and three *A. olivacea* were detected with *T. cruzi* (infection rate of 15%) in Damas Island ([Table 1](#), [Fig. 3](#)). For triatomines, 11 samples of *Mepraia* were positive for *T. cruzi* in Santa María Island, representing an infection rate of 28.9% ([Fig. S2](#), [Table 1](#)). In Pan de Azúcar Island we detected six samples of *Mepraia* positive for *T. cruzi*, representing an infection rate of 10.17% ([Fig. S3](#), [Table 1](#)).

Satellite DNA real-time PCR assays

For *T. cruzi* satDNA detection in small mammals, all the same *A. olivacea* samples were positive as in the detection by kDNA ([Table 1](#), [Fig. S4](#)). The genomic quantification by real-time PCR only was possible for *Abrothrix* from Pan de Azúcar Island, with 129 (sample 8Aipa) and 3.6 (sample 25Aipa) par-eq/mL while in *Abrothrix* from Damas Island low parasitemias were detected (<1 par-eq/mL). For *T. cruzi* satDNA detection in triatomines, 14 *Mepraia* samples for Santa María Island were positive, representing an infection rate of 36.8%, while in Pan de Azúcar Island we found 12 positive samples, with an infection rate of 20.33% ([Table 1](#), [Fig. S4](#)). Raw data of real-time PCR analyses in small mammals and triatomines are available in [Table S1](#).

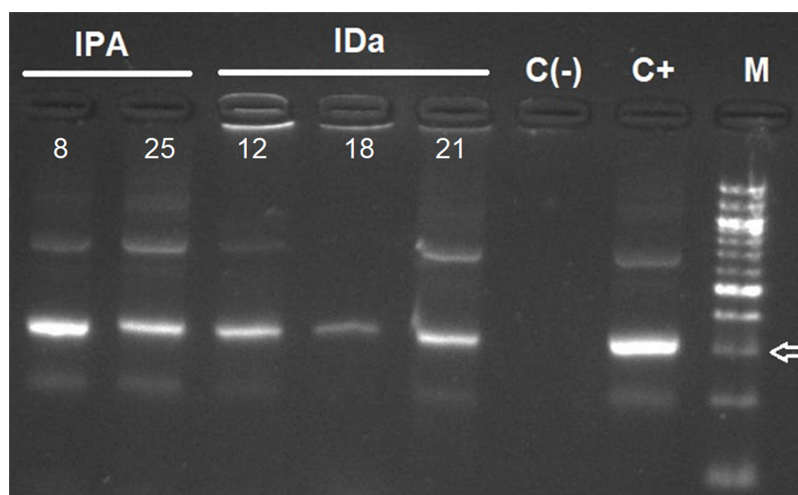


Figure 3 Agarose gel electrophoresis of amplified kDNA by conventional PCR in small mammals (*Abrothrix olivacea*). Lanes IPA: positive rodents from Pan de Azúcar Island, IDa: positive rodents from Damas Island. Lanes C(-): negative control, C+: Positive control and M: 100-bp DNA ladder. Arrow indicates 300 bp. Photo credit: Gabriel Díaz-Campusano.

Full-size [DOI: 10.7717/peerj.9967/fig-3](https://doi.org/10.7717/peerj.9967/fig-3)

Genotyping assays

Genotyping *T. cruzi* DTU assays were only performed in the *Abrothrix* from Pan de Azúcar Island because higher parasitemia was detected. We found the TcII DTU in a mixed infection with TcVI in *A. olivacea* (sample 8Aipa), and a single infection with TcII (sample 25Aipa).

DISCUSSION

The wild cycle of *T. cruzi* in continental areas has been widely reported, but there is still remains a lack of knowledge in insular areas. A few examples were reported that revealed the enzootic *T. cruzi* cycle that included mammals and triatomines in islands of Brazil (Grisard et al., 2000; Das Xavier et al., 2014). In Chile, *T. cruzi*-infected triatomines were reported in Santa María and Pan de Azúcar islands (Rives-Blanchard et al., 2017), raising question related to the mammal hosts involved in this *T. cruzi* cycle.

On Pan de Azúcar Island, two *A. olivacea* were positive to *T. cruzi* by kDNA PCR and satDNA qPCR (infection rate 6.06%, Table 1, Fig. 3). It has been suggested that triatomines on Pan de Azúcar Island feed mainly on sea birds (Sagua et al., 2000), which may explain the low infection rate found in *A. olivacea*. Interestingly, one of the *A. olivacea* samples showed a mixed infection with two DTU, TcI and TcII, congruent with the two DTUs previously found in *Mepraia* on Pan de Azúcar Island (Rives-Blanchard et al., 2017). Therefore, our results confirm that on Pan de Azúcar Island there is a complete *T. cruzi* life cycle, i.e., a cycle in which *T. cruzi* circulates through triatomines and mammalian blood.

Three *A. olivacea* on Damas Island resulted positive for *T. cruzi* by kDNA PCR and satDNA qPCR (infection rate 15% Table 1, Fig. 3). However, no triatomines were found in our study, a pattern also detected on Chañaral and Choros islands. It has been reported that

many triatomines foci can go undetected when vector density is low ([Abad-Franch et al., 2014](#)). A likely explanation is that we failed to find triatomines on those islands particularly if they occur at low abundance (sampling bias). However, we sampled intensively using both a passive ([Campos-Soto, Torres-Pérez & Solari, 2015](#)) and active method, and the park rangers never reported seeing triatomines (personal communication with park rangers). A study suggests that the current absence of *M. spinolai* in those islands may be explained by their absence when the islands were formed or that ancient allopatric populations were extinguished ([Campos-Soto et al., 2020](#)). If hypothetically triatomines are not present, alternatives to explain the *T. cruzi* infection in rodents include: (i) Maintenance of the parasite by vertical trans-placental transmission between rodents, which has been reported in humans, bats and mice ([Delgado & Santos-Buch, 1978](#); [Añez, Crisante & Soriano, 2009](#); [Ortiz et al., 2012](#)); (ii) Cross-reaction with other trypanosomatids (see below).

On Santa María Island, individuals of *Mepraia* infected with *T. cruzi* were previously reported ([Rives-Blanchard et al., 2017](#)), but no small mammals were found in our study despite the sampling effort was similar to that performed on Pan de Azúcar and Damas islands. Unlike the other islands, Santa María Island lacks of vegetation ([Fig. 2](#), [Fig. S1](#)), and the influence of climatic conditions create an arid and desertic landscape ([Jerez, 2000](#); [Cavieres et al., 2002](#); [Clarke, 2006](#)). Also, this island had very few suitable places to set traps ([Fig. 2](#)). Under these conditions, detecting small mammals can be difficult, likely impacting our results. Future studies including higher sampling effort both in density and temporal may elucidate this finding. Strikingly, we found triatomines with an infection rate of 28.9% by kDNA PCR and 36.8% by satDNA qPCR (23.6% confirmed by both, [Table 1](#)). These values reveal a high infection rate, particularly taking into account that the most abundant vertebrates inhabiting this island are marine birds and reptiles of the genus *Microlophus* ([Fig. 2](#); R. Campos-Soto, 2018, field observations of this study).

Mixed infection was previously reported in bugs from Santa María Island ([Rives-Blanchard et al., 2017](#)). It has been suggested that mixed infections are more frequent in areas with high infection rate and/or there is high diversity of mammals that harbor different *T. cruzi* lineages ([Campos-Soto et al., 2016](#)). This is congruent with our triatomine infection rates but contrasts with our small mammals captures. Despite we cannot confirm the absence of small mammals on Santa María Island, the question of how the *T. cruzi* cycle is maintained still remains. In the absence of small mammals on Santa María Island, one explanation for our results is the horizontal transmission of *T. cruzi* among triatomines. For example, coprophagy and cleptohematophagy were reported as (uncommon) mechanisms of transmission among triatomine vectors, mainly by young nymphs ([Ryckman, 1951](#); [Schaub, 1988](#)). On the other hand, [Rives-Blanchard et al. \(2017\)](#) showed that there are positive triatomines on Santa María Island, in which *T. cruzi* DTUs were not identified by hybridization assays. The authors suggested that some TcI or TcII variants did not hybridize with the probes used, or that there are other DTUs not analyzed in their study. Alternatively, there is the possibility that these unidentified DTUs could be another *Trypanosoma* with cross-reactivity to *T. cruzi*. In fact, cross-reactivity in parasite detection by PCR and qPCR analyses has been reported between *T. cruzi* and *T. rangeli* ([Ramírez et al., 2015](#); [Seiringer et al., 2017](#)). The only triatomines that can transmit *T. rangeli* are *Rhodnius* and *Panstrongylus*

(Vallejo et al., 2015). These genera do not co-occur with *Mepraia*, therefore cross-reactivity with *T. rangeli* is unlikely.

Lizard and avian trypanosomes phylogenetically related to *T. cruzi* has been reported (Hughes & Piontkivska, 2003; Hamilton, Gibson & Stevens, 2007; Viola et al., 2008; Dario et al., 2017). Reptiles of the genus *Microlophus* and marine birds are found in high abundance on Santa María Island (Fig. 2), thus triatomines may feed mainly of bird and reptile blood. Also, it has been observed that *Microlophus* actively hunt and feed on these triatomines (R. Campos-Soto, 2018, field observations of this study). Consequently, the triatomines could be hosting a reptilian or avian trypanosome that could have cross-reactivity with *T. cruzi*. However, reptilian trypanosomes are transmitted by dipterous sandflies and not by triatomines (Adler & Theodor, 1957; Hamilton, Gibson & Stevens, 2007). According to Seiringer et al. (2017), the best *T. cruzi* diagnosis is a combination of both kinetoplast DNA detection and nuclear satellite DNA by conventional PCR and qPCR assays, respectively. In our study, all small mammals and most of the triatomines were positive for *T. cruzi* by conventional PCR (targeting kDNA) and qPCR (targeting nuclear satellite DNA), suggesting the absence of cross-reaction with reptilian or avian trypanosomes. Trypanosomes such as *T. brucei* can exceptionally infect lizards in the wild cycle (Njagu et al., 1999), and chickens experimentally (Minter-Goedbloed, 1981). A study shows that the availability of reptiles is positively related to the *T. cruzi* infection risk in an endemic area of Chile (San Juan et al., 2020). These antecedents show that the role of endemic reptiles as hosts of *T. cruzi* remains to be elucidated.

The mechanisms of colonization of *Mepraia* to the islands of northern Chile are relevant to understand the *T. cruzi* infection in these areas. The origin of *Mepraia* populations on Santa María and Pan de Azúcar islands was suggested by mechanisms of vicariance and dispersal, starting about middle-upper Pleistocene. Bidirectional migration rates between these islands and continental populations was inferred (Campos-Soto et al., 2020). Possible means of dispersal include passive transport by marine birds (Schofield et al., 1998; Sagua et al., 2000) and fishermen who sail to the islands carrying infected triatomines and/or eggs in their clothes or backpacks. An additional passive dispersal mechanism might include sea wolves (*Otaria flavescens*), which could transport nymphs within their pelage (Schofield et al., 1998). The flight of kissing-bugs also may be another dispersal mechanism. However, *Mepraia*'s nymphs and adult females are wingless while males show wings polymorphism (Schofield et al., 1998; Campos et al., 2011). *M. parapatrica* and *M. gajardoi* males are brachypterous (Frías-Lasserre, 2010), with wings shorter or equal than the abdomen length (Campos et al., 2011) and flying capacity not documented, which would allow discard the dispersion by flight of the bugs.

CONCLUSIONS

In conclusion, we show for the first time in Chile the occurrence of insular rodents infected with *T. cruzi*, and a complete *T. cruzi* life cycle in a coastal island (Pan de Azúcar Island). We also show two different contrasting results: an island (Santa María) with infected triatomines but without captured small mammals, and another island (Damas)

with infected rodents but without captured triatomines (Fig. 1, Table 1). Future studies including a greater capture effort targeting the hosts and the vector will help to elucidate the transmission mechanism maintaining the *T. cruzi* life cycle on those islands. Our study provides new relevant knowledge about the *T. cruzi* cycle on islands and the role of its hosts and vectors.

ACKNOWLEDGEMENTS

We appreciate the help and suggestions provided by Dra. Carezza Botto-Mahan. Help in field activities was provided by Javier Cruz, Marisol Arriagada and Fernanda Vergara.

ADDITIONAL INFORMATION AND DECLARATIONS

Funding

This study was supported by funds from ANID Program FONDECYT N° 11170643 (Ricardo Campos-Soto), FONDECYT N° 1171280 (Fernando Torres-Pérez), ANID Postdoctorado N° 3170799 (Catalina-Muñoz-San Martín) and FONDECYT N° 1170367. There was no additional external funding received for this study. The funders had no role in study design, data collection and analysis, decision to publish, or preparation of the manuscript.

Grant Disclosures

The following grant information was disclosed by the authors:
ANID Program FONDECYT: 11170643, 1171280, 3170799, 1170367.

Competing Interests

The authors declare there are no competing interests.

Author Contributions

- Ricardo Campos-Soto conceived and designed the experiments, analyzed the data, prepared figures and/or tables, authored or reviewed drafts of the paper, field activities, and approved the final draft.
- Gabriel Díaz-Campusano conceived and designed the experiments, performed the experiments, prepared figures and/or tables, field activities, and approved the final draft.
- Nicol Quiroga performed the experiments, analyzed the data, prepared figures and/or tables, authored or reviewed drafts of the paper, field activities, and approved the final draft.
- Catalina Muñoz-San Martín performed the experiments, analyzed the data, prepared figures and/or tables, authored or reviewed drafts of the paper, and approved the final draft.
- Ninette Rives-Blanchard performed the experiments, prepared figures and/or tables, field activities, and approved the final draft.
- Fernando Torres-Pérez analyzed the data, authored or reviewed drafts of the paper, and approved the final draft.

Animal Ethics

The following information was supplied relating to ethical approvals (i.e., approving body and any reference numbers):

The research project that includes this study was approved by the Bioethic Committee of the Pontificia Universidad Católica de Valparaíso (BIOEPUCV-A98b-2017).

Field Study Permissions

The following information was supplied relating to field study approvals (i.e., approving body and any reference numbers):

Sampling procedures were authorized by the Servicio Agrícola y Ganadero (resolution number: 8353), Corporación Nacional Forestal from Atacama Region (permit number: 049/2017) and Coquimbo Region (permit number: 22/2019). We appreciate the logistical help was provided by Pan de Azúcar National Park and Pingüino de Humboldt National Reserve administrators and their park rangers.

Data Availability

The following information was supplied regarding data availability:

The raw measurements are available in the [Supplementary Files](#).

Supplemental Information

Supplemental information for this article can be found online at <http://dx.doi.org/10.7717/peerj.9967#supplemental-information>.

REFERENCES

- Abad-Franch F, Valença-Barbosa C, Sarquis O, Lima MM. 2014.** All that glisters is not gold: sampling-process uncertainty in disease-vector surveys with false-negative and false-positive detections. *PLOS Neglected Tropical Diseases* **8**:e3187 DOI [10.1371/journal.pntd.0003187](https://doi.org/10.1371/journal.pntd.0003187).
- Adler S, Theodor O. 1957.** Transmission of disease agents by Phlebotomine sand flies. *Annual Review of Entomology* **2**:203–226 DOI [10.1146/annurev.en.02.010157.001223](https://doi.org/10.1146/annurev.en.02.010157.001223).
- Añez N, Crisante G, Soriano PJ. 2009.** *Trypanosoma cruzi* congenital transmission in wild bats. *Acta Tropica* **109**:78–80.
- Boric-Bargetto D, Rodríguez-Serrano E, Hernández CE, Jaksic FM, Palma RE. 2012.** Temporal variation in genetic diversity during an outbreak of *Oligoryzomys longicaudatus* (Rodentia, Sigmodontinae) in a temperate forest of southern Chile. *Biochemical Systematics and Ecology* **44**:383–389 DOI [10.1016/j.bse.2012.06.009](https://doi.org/10.1016/j.bse.2012.06.009).
- Boric-Bargetto D, Zúñiga-Reinoso Á, Cancino RA, González-Acuña D, Rodríguez-Serrano E, Palma RE, Hernández CE. 2016.** Phylogenetic evaluation of taxonomic definition of didelphid mouse opossum of the genus *Thylamys* from valleys of Coquimbo region, Chile. *Zootaxa* DOI [10.11646/zootaxa.4105.4.3](https://doi.org/10.11646/zootaxa.4105.4.3).
- Botto-Mahan C, Sepúlveda M, Vidal M, Acuña Retamar M, Ortiz S, Solari A. 2008.** *Trypanosoma cruzi* infection in the sylvatic kissing bug *Mepraia gajardoi* from the Chilean Southern Pacific Ocean coast. *Acta Tropica* **105**:166–169 DOI [10.1016/j.actatropica.2007.11.003](https://doi.org/10.1016/j.actatropica.2007.11.003).

- Campos R, Botto-Mahan C, Coronado X, Jaramillo N, Panzera F, Solari A. 2011.** Wing shape differentiation of *Mepraia* species (Hemiptera: Reduviidae). *Infection, Genetics and Evolution* 11:329–33 DOI 10.1016/j.meegid.2010.11.002.
- Campos R, Torres-Pérez F, Botto-Mahan C, Coronado X, Solari A. 2013.** High phylogeographic structure in sylvatic vectors of Chagas disease of the genus *Mepraia* (Hemiptera: Reduviidae). *Infection, Genetics and Evolution* 19:280–286 DOI 10.1016/j.meegid.2013.04.036.
- Campos-Soto R, Díaz-Campusano G, Cianferoni F, Torres-Pérez F. 2020.** Biogeographic origin and phylogenetic relationships of *Mepraia* (Hemiptera, Reduviidae) on islands of northern Chile. *PLOS ONE* 15:e0234056 DOI 10.1371/journal.pone.0234056.
- Campos-Soto R, Ortiz S, Ivan C, Bruneau N, Botto-Mahan C, Solari A. 2016.** Interactions between *Trypanosoma cruzi* the Chagas disease parasite and naturally infected wild *Mepraia* vectors of Chile. *Vector-Borne and Zoonotic Diseases* 16:165–171 DOI 10.1089/vbz.2015.1850.
- Campos-Soto R, Torres-Pérez F, Solari A. 2015.** Phylogenetic incongruence inferred with two mitochondrial genes in *Mepraia* spp. and *Triatoma eratyrusiformis* (Hemiptera, Reduviidae). *Genetics and Molecular Biology* 38:390–395 DOI 10.1590/S1415-475738320140301.
- Cavieres LA, Arroyo MTK, Posadas P, Marticorena C, Matthei O, Rodríguez R, Squeo FA, Arancio G. 2002.** Identification of priority areas for conservation in an arid zone: application of parsimony analysis of endemism in the vascular flora of the Antofagasta region, northern Chile. *Biodiversity and Conservation* 11:1301–1311 DOI 10.1023/A:1016001714358.
- Clarke JDA. 2006.** Antiquity of aridity in the Chilean Atacama Desert. *Geomorphology* 73:101–114 DOI 10.1016/J.GEOMORPH.2005.06.008.
- Dario MA, Lisboa CV, Costa LM, Moratelli R, Nascimento MP, Costa LP, Reis Leite YL, Llewellyn MS, Das Chagas Xavier SC, Rodrigues Roque AL, Jansen AM. 2017.** High *Trypanosoma* spp. diversity is maintained by bats and triatomines in Espírito Santo state, Brazil. *PLOS ONE* 12:e0188412 DOI 10.1371/journal.pone.0188412.
- Das Xavier SCC, Roque ALR, Bilac D, De Araújo VAL, Da Neto SFC, Lorosa ES, Da Silva LFCF, Jansen AM. 2014.** Distantiae Transmission of *Trypanosoma cruzi*: a new epidemiological feature of acute chagas disease in Brazil. *PLOS Neglected Tropical Diseases* 8:e2878 DOI 10.1371/journal.pntd.0002878.
- Delgado MA, Santos-Buch CA. 1978.** Transplacental transmission and fetal parasitosis of *Trypanosoma cruzi* in Outbred White Swiss Mice*. *The American Journal of Tropical Medicine and Hygiene* 27:1108–1115 DOI 10.4269/ajtmh.1978.27.1108.
- Frías D, Henry A, Gonzalez C. 1998.** *Mepraia gajardoi*: a new species of tritominæ (Hemiptera: Reduviidae) from Chile and its comparison with *Mepraia spinolai*. *Revista Chilena de Historia Natural* 71:177–188.
- Frías-Lasserre D.** A new species and karyotype variation in the bordering distribution of *Mepraia spinolai* (Porter) and *Mepraia gajardoi* Frías et al (Hemiptera: Reduviidae):

- Triatominae) in Chile and its parapatric model of speciation. *Neotropical Entomology* **39**:572–583 DOI [10.1590/S1519-566X2010000400017](https://doi.org/10.1590/S1519-566X2010000400017).
- Grisard EC, Carvalho-Pinto CJ, Scholz AF, Toma Jr HK, BR Schlemper, Steindel M. 2000.** *Trypanosoma cruzi* infection in Didelphis marsupialis in Santa Catarina and Arvoredo Islands, southern Brazil. *Memórias do Instituto Oswaldo Cruz* **95**:795–800 DOI [10.1590/S0074-02762000000600008](https://doi.org/10.1590/S0074-02762000000600008).
- Hamilton PB, Gibson WC, Stevens JR. 2007.** Patterns of co-evolution between trypanosomes and their hosts deduced from ribosomal RNA and protein-coding gene phylogenies. *Molecular Phylogenetics and Evolution* **44**:15–25 DOI [10.1016/j.ympev.2007.03.023](https://doi.org/10.1016/j.ympev.2007.03.023).
- Hughes AL, Piontkivska H. 2003.** Phylogeny of trypanosomatidae and bodonidae (Kinetoplastida) based on 18S rRNA: evidence for Paraphyly of *Trypanosoma* and six other Genera. *Molecular Biology and Evolution* **20**:644–652 DOI [10.1093/molbev/msg062](https://doi.org/10.1093/molbev/msg062).
- Jerez V. 2000.** Diversidad y patrones de distribución geográfica de insectos coleópteros en ecosistemas desérticos de la región de Antofagasta, Chile. *Revista Chilena de Historia Natural* **73**:79–92 DOI [10.4067/S0716-078X2000000100009](https://doi.org/10.4067/S0716-078X2000000100009).
- Kierszenbaum F, Ivanyi J, Budzko DB. 1976.** Mechanisms of natural resistance to trypanosomal infection, Role of complement in avian resistance to *Trypanosoma cruzi* infection. *Immunology* **30**:1–6.
- Mazza S, Gajardo R, Jörg M. 1940.** *Mepraia* novum genus de Triatominae. *Mepraia spinolai* (Porter) 1933, redescrpción del macho y descripción de la hembra. *MEPRA Publicación* **44**:3–30.
- Mc Cabe A, Yañez F, Pinto R, López A, Ortiz S, Martin CMS, Botto-Mahan C, Solari A. 2019.** Survivorship of wild caught *Mepraia spinolai* nymphs: the effect of seasonality and *Trypanosoma cruzi* infection after feeding and fasting in the laboratory. *Infection, Genetics and Evolution* **71**:197–204 DOI [10.1016/j.meegid.2019.04.002](https://doi.org/10.1016/j.meegid.2019.04.002).
- Minter-Goedbloed E. 1981.** The susceptibility of chickens to *Trypanosoma brucei* subspecies. *Transactions of the Royal Society of Tropical Medicine and Hygiene* **75**(81):345–349 DOI [10.1016/0035-9203\(81\)90089-4](https://doi.org/10.1016/0035-9203(81)90089-4).
- Muñoz-San Martín C, Apt W, Zulantay I. 2017.** Real-time PCR strategy for the identification of *Trypanosoma cruzi* discrete typing units directly in chronically infected human blood. *Infection, Genetics and Evolution* **49**:300–308 DOI [10.1016/J.MEEGID.2017.02.006](https://doi.org/10.1016/J.MEEGID.2017.02.006).
- Muñoz-San Martín C, CampoVerde Arbocco F, Saavedra M, Actis EA, Ríos TA, Abba AM, Morales ME, Cattán PE, Jahn GA, Superina M. 2020.** High rates of *Trypanosoma cruzi* infection in goats from Mendoza province, Argentina: parasite loads in blood and seasonal variation. *Acta Tropica* **208**:105493 DOI [10.1016/J.ACTATROPICA.2020.105493](https://doi.org/10.1016/J.ACTATROPICA.2020.105493).
- Muñoz-San Martín C, Zulantay I, Saavedra M, Fuentealba C, Muñoz G, Apt W. 2018.** Discrete typing units of *Trypanosoma cruzi* detected by real-time PCR in Chilean patients with chronic Chagas cardiomyopathy. *Acta Tropica* **185**:280–284 DOI [10.1016/J.ACTATROPICA.2018.05.004](https://doi.org/10.1016/J.ACTATROPICA.2018.05.004).

- Njagu Z, Mihok S, Kokwaro E, Verloo D. 1999. Isolation of *Trypanosoma brucei* from the monitor lizard (*Varanus niloticus*) in an endemic focus of rhodesian sleeping sickness in Kenya. *Acta Tropica* 72:137–148 DOI 10.1016/S0001-706X(98)00092-8.
- Ortiz S, Zulantay I, Solari A, Bisio M, Schijman A, Carlier Y, Apt W. 2012. Presence of *Trypanosoma cruzi* in pregnant women and typing of lineages in congenital cases. *Acta Tropica* 124:243–246 DOI 10.1016/j.actatropica.2012.08.001.
- Piron M, Fisa R, Casamitjana N, López-Chejade P, Puig L, Vergés M, Gascón J, Prat JGI, Portús M, Sauleda S. 2007. Development of a real-time PCR assay for *Trypanosoma cruzi* detection in blood samples. *Acta Tropica* 103:195–200 DOI 10.1016/j.actatropica.2007.05.019.
- Ramírez JC, Cura CI, Da Cruz Moreira O, Lages-Silva E, Juiz N, Velázquez E, Ramírez JD, Alberti A, Pavia P, Flores-Chávez MD, Muñoz Calderón A, Pérez-Morales D, Santalla J, Marcos da Matta Guedes P, Peneau J, Marcet P, Padilla C, Cruz-Robles D, Valencia E, Crisante GE, Greif G, Zulantay I, Costales JA, Alvarez-Martínez M, Martínez NE, Villarroel R, Villarroel S, Sánchez Z, Bisio M, Parrado R, Maria da Cunha Galvão L, Jácome da Câmara AC, Espinoza B, Alarcón de Noya B, Puerta C, Riarte A, Diosque P, Sosa-Estani S, Guhl F, Ribeiro I, Aznar C, Britto C, Yadón ZE, Schijman AG. 2015. Analytical validation of quantitative real-time pcr methods for quantification of *Trypanosoma cruzi* DNA in blood samples from Chagas disease patients. *The Journal of Molecular Diagnostics* 17:605–615 DOI 10.1016/j.jmoldx.2015.04.010.
- Rives-Blanchard N, Torres-Pérez F, Ortiz S, Solari A, Campos-Soto R. 2017. *Trypanosoma cruzi* over the ocean: insular zones of Chile with presence of infected vector *Mepraia* species. *Acta Tropica* 172:229–231 DOI 10.1016/j.actatropica.2017.05.020.
- Ryckman R. 1951. Recent observations of Cannibalism in *Triatoma* (Hemiptera: Reduviidae). *The Journal of Parasitology* 37:433–434.
- Sagua H, Araya Rojas J, González Cortes J, Neira Cortes I. 2000. *Mepraia spinolai* in the Southeastern Pacific Ocean coast (Chile) - first insular record and feeding pattern on the Pan de Azúcar island. *Memorias do Instituto Oswaldo Cruz* 95:167–170 DOI 10.1590/s0074-02762000000200006.
- San Juan E, Araya-Donoso R, Sandoval-Rodríguez A, Yáñez Meza A, Quiroga N, Botto-Mahan C. 2020. Lizards and rabbits may increase Chagas infection risk in the Mediterranean-type ecosystem of South America. *Scientific Reports* 10:1853 DOI 10.1038/s41598-020-59054-8.
- Schaub GA. 1988. Direct transmission of *Trypanosoma cruzi* between vectors of Chagas' disease. *Acta Tropica* 45:11–19.
- Schofield CJ, APT W, Sagua H, Panzera F, Dujardin JP. 1998. Alary polymorphism in *Triatoma spinolai* and its possible relationship with demographic strategy. *Medical and Veterinary Entomology* 12:30–38 DOI 10.1046/j.1365-2915.1998.00074.
- Seiringer P, Pritsch M, Flores-Chavez M, Marchisio E, Helfrich K, Mengele C, Hohnerlein S, Bretzel G, Löscher T, Hoelscher M, Berens-Riha N. 2017. Comparison of four PCR methods for efficient detection of *Trypanosoma cruzi* in

- routine diagnostics. *Diagnostic Microbiology and Infectious Disease* **88**:225–232 DOI [10.1016/J.DIAGMICROBIO.2017.04.003](https://doi.org/10.1016/J.DIAGMICROBIO.2017.04.003).
- Sikes RS. 2016.** 2016 Guidelines of the American Society of Mammalogists for the use of wild mammals in research and education. *Journal of Mammalogy* **97**:663–688 DOI [10.1093/jmammal/gyw078](https://doi.org/10.1093/jmammal/gyw078).
- Torres-Pérez F, Navarrete-Droguett J, Aldunate R, Yates TL, Mertz GJ, Vial PA, Ferrés M, Marquet PA, Palma RE. 2004.** Peridomestic small mammals associated with confirmed cases of human hantavirus disease in Southcentral Chile. *American Journal of Tropical Medicine and Hygiene* **70**(3):305–309 DOI [10.4269/ajtmh.2004.70.305](https://doi.org/10.4269/ajtmh.2004.70.305).
- Urdaneta-Morales S, McLure I. 1981.** Experimental infections in Venezuelan lizards by *Trypanosoma cruzi*. *Acta Tropica* **38**:99–105 DOI [10.5169/seals-312810](https://doi.org/10.5169/seals-312810).
- Vallejo GA, Suárez J, Olaya JL, Gutierrez SA, Carranza JC. 2015.** *Trypanosoma rangeli*: un protozoo infectivo y no patógeno para el humano que contribuye al entendimiento de la transmisión vectorial y la infección por *Trypanosoma cruzi*, agente causal de la enfermedad de Chagas. *Revista de la Academia Colombiana de Ciencias Exactas, Físicas y Naturales* **39**(150):111–122 DOI [10.18257/raccefyn.143](https://doi.org/10.18257/raccefyn.143).
- Viola LB, Campaner M, Takata CSA, Ferreira RC, Rodrigues AC, Freitas RA, Duarte MR, Grego KF, Barrett TV, Camargo EP, Teixeira MMG. 2008.** Phylogeny of snake trypanosomes inferred by SSU rDNA sequences, their possible transmission by phlebotomines, and taxonomic appraisal by molecular, cross-infection and morphological analysis. *Parasitology* **135**:595–605 DOI [10.1017/S0031182008004253](https://doi.org/10.1017/S0031182008004253).
- Wincker P, Britto C, Pereira JB, Cardoso MA, Oelemann W, Morel C. 1994.** Use of a simplified polymerase chain reaction procedure to detect *Trypanosoma cruzi* in blood samples from chronic chagasic patients in a rural endemic area. *American Journal of Tropical Medicine and Hygiene* **51**:771–777.