

# SCIENTIFIC REPORTS



OPEN

## Electroretinographic evaluations of retinal function before, just after, and after intravitreal injections

Kazuma Yagura<sup>1</sup>, Kei Shinoda<sup>1</sup>, Soiti Matsumoto<sup>1,2</sup>, Gaku Terauchi<sup>1</sup>, Makoto Kawashima<sup>1</sup>, Emiko Watanabe<sup>1</sup>, Harue Matsumoto<sup>1,2</sup>, Takeshi Iwata<sup>3</sup>, Atsushi Mizota<sup>1</sup> & Yoizo Miyake<sup>4</sup>

Received: 17 March 2016

Accepted: 13 July 2016

Published: 05 August 2016

Intravitreal injections (IVI) have become a part of daily practice for a growing number of procedures. We evaluated the retinal function by recording intraoperative photopic electroretinograms (ERGs) before an injection (T1), just after the injection (T2), and after the aspiration of the anterior chamber fluid (T3) of 19 eyes of 19 patients (mean age 70.6 years; men = 11) who received an IVI of an anti-vascular endothelial growth factor. The mean amplitudes of the b-wave, photopic negative responses (PhNR), and oscillatory potentials (OPs) 1 and 2 at T2 were significantly smaller than that at T1, but no significant difference was observed between T3 and T1. The mean implicit times of the a-wave and OP1, 2, and 3 at T2 and the a-wave and the OP2 at T3 were significantly longer than that at T1. The mean intraocular pressure (IOP) at T2 (49.32 mm Hg) was significantly higher and the IOP at T3 (8.74 mm Hg) was significantly lower than that at T1 (21.05 mm Hg). The retinal function was reduced and the IOP elevated just after the IVI. The response of each ERG component was different suggesting a different sensitivity of each type of retinal neuron to IVI.

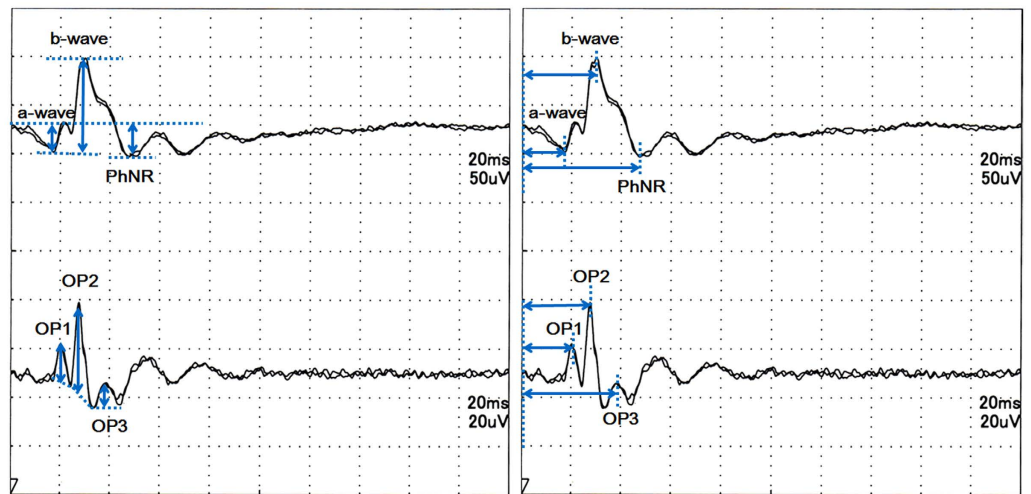
An intravitreal injection of anti-vascular endothelial growth factor (anti-VEGF) agents has become a common procedure for several types of retinal diseases, e.g., exudative age-related macular degeneration (AMD), macular edema associated with retinal vein occlusion (RVO), diabetic retinopathy, and other retinal diseases associated with vascular abnormalities<sup>1–8</sup>. In addition, the number of intravitreal injections of ocriplasmin has increased worldwide<sup>9–11</sup>. Thus, intravitreal injections have become a part of the daily practice for a growing number of procedures.

The adverse effects of intravitreal injections include endophthalmitis, cataract progression, vitreous hemorrhage, and retinal tears<sup>1,2,12,13</sup>. A transient elevation of the intraocular pressure (IOP) is known to occur immediately after an intravitreal injection and the elevation of the IOP may be sustained<sup>14–16</sup>. An elevated IOP is an important risk factor for glaucoma, which raises a concern about the long-term safety of intravitreal injections<sup>17,18</sup> especially in eyes with risk factors for ocular hypertension and/or glaucoma. However, no information about the effects of intravitreal injections on retinal function in humans has been published.

Miyake and colleagues<sup>19–21</sup> recorded intraoperative electroretinograms (ERGs) during vitreous surgery and reported a reduction in the amplitude and prolongation of the implicit time of the 30 Hz flicker ERGs. However, an accurate evaluation of each type of retinal cells was not performed, and measurements of the IOP were not made.

Thus, the purpose of this study was to determine whether the retinal function is altered during and after an intravitreal injection of anti-VEGF drugs. In addition, the effect of the intravitreal injection on the IOP was determined. To accomplish this, we recorded photopic ERGs and measured the IOPs before and just after the intravitreal injection. In addition, ERGs were recorded after the IOP was lowered by anterior chamber (AC) paracentesis<sup>22–24</sup>. The photopic ERGs allowed us to do detailed analyses of the function of the cone pathway, and we were able to evaluate the changes in the cone-driven retinal function before, during, and after the IVI.

<sup>1</sup>Department of Ophthalmology, Teikyo University School of Medicine, 2-11-1, Kaga, Itabashi-ku, Tokyo 173-8605, Japan. <sup>2</sup>Matsumoto Eye Clinic, Tokushima, Japan. <sup>3</sup>Division of Molecular and Cellular Biology, National Institute of Sensory Organs, National Hospital Organization Tokyo Medical Center, Tokyo, Japan. <sup>4</sup>Aichi Medical University, 1-1 Yazakokarimata, Nagakute, Aichi, 480-1195, Japan. Correspondence and requests for materials should be addressed to K.S. (email: shinodak@med.teikyo-u.ac.jp)



**Figure 1. Measurements of the amplitude and implicit time of each component.** Left: The amplitude of the a-wave was measured from the baseline to the trough of the a-wave, the amplitude of the b-wave was measured from the trough of the a-wave to the peak of the b-wave, and the amplitude of the photopic negative response (PhNR) was measured from the baseline to the trough of the PhNR. The amplitude of the OPs was measured from the baseline which was determined as the line connecting each negative trough of the OPs to the peak. Right: The implicit times of the a-, and b-waves, the PhNR, and the OPs were measured from stimulus onset to the peak of each wave.

## Patients and Methods

**Patients.** The participants were scheduled to undergo an intravitreal injection of an anti-VEGF antibody for different reasons at the Teikyo University Hospital in Tokyo, Japan in 2015. All of the patients gave an informed consent for the operation with intraoperative ERG recordings and IOP measurements. Patients with severe high myopia ( $> -6.0$  D or axial length  $> 26$  mm) and/or glaucoma were excluded to minimize the effect of more vulnerable retinas.

We studied 11 eyes of 11 men and 8 eyes of 8 women. The average age of the patients was  $70.6 \pm 13.7$  years ( $\pm$ SD) with a range from 35 to 87 years. The vitreoretinal pathologies were; 8 with exudative AMD, 3 with macular edema due to branch RVO, 2 with central RVO, and 7 with diabetic macular edema (DME). The number of previous IVI received by the patients varied from 0 to 16 with a mean of  $3.7 \pm 1.0$ , mean  $\pm$  SD. Eight eyes received ranibizumab and 11 eyes received aflibercept.

This study was conducted according to the guidelines of the Declaration of Helsinki, and all of the procedures were approved by the Ethics Committee of the Teikyo University School of Medicine. An informed consent was obtained from all subjects.

## Methods

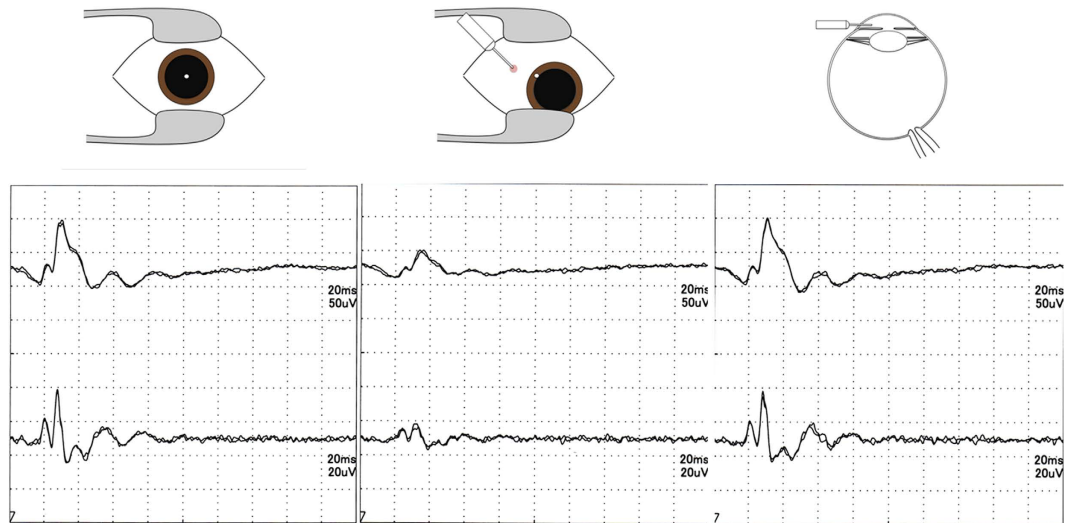
The procedures were performed in accordance with the approved guidelines. All of the intravitreal injections were performed under topical anesthesia by 4% lidocaine. Patients were prepped and draped in the usual sterile fashion, and after sterilization of the ocular surface with povidone iodine, either ranibizumab (0.5 mg/0.05 ml) or aflibercept (2.0 mg/0.05 ml) was injected into the vitreous cavity through the pars plana using a 30-gauge needle. After the injection, a paracentesis was performed to normalize the IOP. The room temperature was set at 25.0 degree centigrade throughout the operation.

Intraoperative ERGs (iERGs) were recorded using a contact lens with a built-in light-emitting diode (LS-100, Mayo Co, Inazawa, Japan) according to the method reported by Miyake *et al.* (1991, Arch Ophthalmol). ERGs were recorded before the injection (T1), just after the injection (T2), and after the aspiration of the anterior chamber fluid (T3). The IOP was recorded just before each ERG recording with the Tono-pen AVIA (Reichert, USA).

**Intraoperative electroretinograms (iERGs).** A contact lens with a built-in light-emitting diode (LS-100, Mayo Co, Inazawa, Japan) was sterilized and used as both the stimulus source and the recording electrode for the photopic iERGs. The reference electrode was a silver plate placed on the forehead and the ground electrode was attached to one ear lobe. The photopic ERGs were elicited by 2-Hz rectangular stimuli of 3-ms duration and a luminance of  $1000 \text{ cd/m}^2$ . The luminance of the constant background was  $25.1 \text{ cd/m}^2$ .

The iERGs were amplified, A/D converted, and averaged with a bioamplifier (MEB-9404, Nihon Kohden Corporation, Tokyo, Japan). Twenty responses were averaged at a sampling rate of 10 kHz. The responses were filtered with a hardwired band pass filter between 2 Hz to 1 kHz to record the a- and b-waves and between 100 Hz to 500 Hz to record the oscillatory potentials (OPs). The analysis time was 300 ms. All ERG recordings were performed after 5 minutes of light-adaptation to the room light.

The amplitudes and implicit times of the a- and b-waves, photopic negative responses (PhNRs) following the b-wave, and OPs were analyzed. Briefly, the implicit times of the a-, and b-waves, the PhNR, and the OPs were measured from stimulus onset to the peak of each wave (Fig. 1). The amplitudes of the a-waves were measured



**Figure 2. Electroretinograms (ERGs) in a representative case.** Left: ERG before intravitreal injection at T1. The intraocular pressure (IOP) was 18 mmHg. Middle: The ERG just after the intravitreal injection at T2. The IOP was 41 mmHg. Right: The ERG just after aspiration of anterior chamber fluid at T3. The IOP was 9 mmHg.

from baseline to the troughs of the a-waves, and the amplitudes of the b-waves were measured from the troughs of the a-waves to the peaks of the b-waves. The amplitudes of the PhNR were measured from the baseline to the trough following the b-wave (Fig. 1). The amplitudes of the OPs were measured from the baseline, which was defined as the line connecting each negative trough to the peak (Fig. 1).

**Test-re-test reproducibility.** To examine the reproducibility of the ERG recordings, two recordings were recorded and evaluated. The intraclass correlation coefficients (ICC [1,2]) were calculated for average amplitude and implicit time for each component at T1, where the ERG recordings were done twice before the intervention. The time elapsed between the two measurements was approximately one minute. According to Fleiss, ICCs  $\geq 0.75$ , between 0.40 and 0.75, and  $\leq 0.4$ , are defined as excellent, moderate, and poor, respectively<sup>25</sup>.

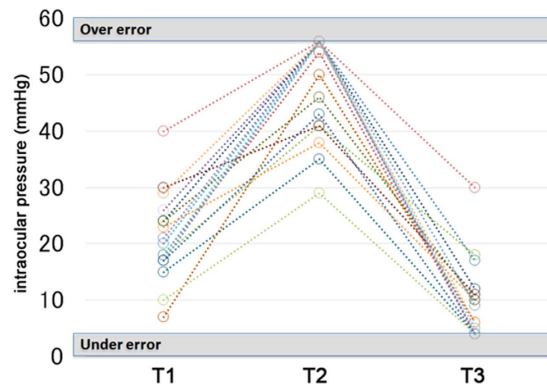
**Statistical analyses.** Two-way analysis-of-variance (ANOVA; three time points vs. ERG components) was used to test for the significance of the procedural effects, and the null hypothesis was that there were no effects of the procedures. Post hoc tests were performed at the three time points. Paired *t* tests were used to determine the significance in the differences of the values for each of the six ERG components independently. The significance of differences in the IOPs, amplitudes, and implicit times of the a-, b-, and d-waves, PhNR, and OPs, between T1 and T2 and between T1 and T3 was determined by paired *t* tests. The  $\alpha$ -level was set to 0.006 to compensate for the multiple comparisons. The *t* tests for the amplitude on the a-wave, b-wave, and PhNR were done for T1 vs T2, T2 vs T3, and T1 vs T3. The number of comparisons was 9 and the  $\alpha$ -level was set at 0.05 divided by 9 thereby 0.006. The *t* tests for the amplitudes of OP1, OP2, and OP3 were done in the same way and the  $\alpha$ -level was set at 0.006. The  $\alpha$ -level for the implicit time was set at 0.006 in the same way. Pearson's correlation coefficient was used to determine the significance of the correlations between the changes of the IOP and each ERG parameter. Because IOPs  $>55$  mmHg and  $<5$  mmHg was not designated by the Tono-pen AVIA, the reading of 'Over' was assigned a value of 56 mmHg and 'Under' was assigned a value of 4 mmHg for the statistical analyses. Spearman correlation coefficients were calculated to determine the correlations between the number of previous IVIs and the changes in the amplitudes and the implicit times of each component.

**Conformity to Ethical Requirements.** The procedures used conformed to the tenets of the Declaration of Helsinki. The study was an observational case series with approval of the Ethics Committee of the Teikyo University School of Medicine (Study ID Number: 10-033-2) and informed consent was obtained from all participants to participate in research.

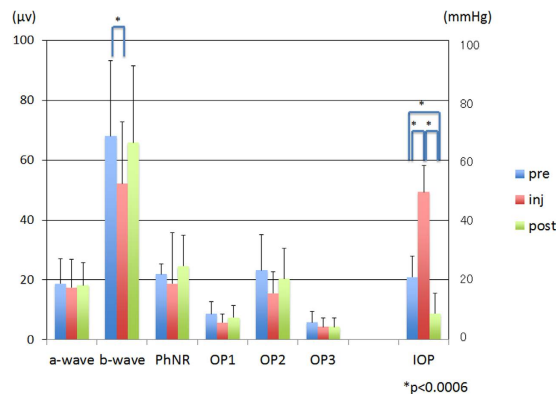
## Results

The intraobserver reproducibility of the ERG measurements was excellent. The ICC [1, 2] was 1.000, 0.997, 0.988, 1.000, 0.999, and 0.992 for the amplitude of a-wave, b-wave, PhNR, OP1, OP2, and OP3, respectively. It was 1.000, for the implicit time of all components. The correlations between the number of previous IVIs and the changes in the amplitudes and the implicit times of each component were not significant.

Representative ERGs are shown in Fig. 2. The IOP of each eye at three time points is shown in Fig. 3. Among the 57 measurements, 18 had the out-range reading; 10 eyes had an 'over error' at T2 and 8 eyes had an 'under error' at T3.



**Figure 3. Changes of the intraocular pressure in all eyes.** The intraocular pressures (IOPs) are plotted for each eye at the three time points. When the scale reads ‘over error’ as shown, the IOP is assigned as 56 mmHg, and when the scale reads ‘under error’, the IOP is assigned as 4 mmHg. The IOP of 10 eyes were assigned to be 56 mmHg at T2 and 8 eyes were assigned as 4 mmHg at T3. T1, time before the injection; T2, time immediately after the injection; and T3, time after the paracentesis.



**Figure 4. The mean amplitude of each component of the ERGs and the mean intraocular pressure (IOP) at each time.** The mean amplitude of the b-wave at T2 was significantly smaller than that at T1. No significant difference in the mean amplitude of each component was observed between T1 and T3. The mean IOP at T2 was significantly higher than that at T1, and it at T3 was significantly lower than that at T1. PhNR, photopic negative response; OP, oscillatory potentials; pre at T1, inj at T2, post at T3. The error bars represent the standard deviations. The asterisks indicate that the differences were significant at,  $* = P < 0.006$ .

Two-way ANOVA showed that the ERG parameters were not consistent at the three time points ( $P < 0.001$  for both amplitude and implicit time). Scheffé’s F tests showed that the amplitude was significantly different between T1 and T2 ( $P = 0.004$ ) and T2 and T3 ( $P = 0.024$ ), and the implicit time was significantly different between T1 and T2 ( $P = 0.003$ ).

The mean amplitude of the b-wave at T2 was significantly smaller than that at T1 ( $P < 0.006$ , Fig. 4, Table 1). However, the mean amplitude of each component at T1 vs T3 and at T2 vs T3 was not significantly different ( $P > 0.006$ , Fig. 4, Table 1). Similarly, the mean implicit time of each component except the b-wave and the PhNR at T2, was significantly longer than that at T1 ( $P < 0.006$ , Fig. 5, Table 1). However, the differences of the mean implicit times of each component between T1 vs T3 and T2 vs T3 were not significant ( $P > 0.006$ , Fig. 5, Table 1).

Additional comparisons were made between the parameters that showed significant changes from T1 to T2, and no significant difference was found in the changes in the implicit times for the a-wave, OP1, OP2, and OP3.

The mean IOP was  $49.32 \pm 8.83$  mm Hg at T2 which was significantly higher than at T1 ( $21.05 \pm 7.48$  mm Hg,  $P < 0.001$ ). The IOP recovered to  $8.74 \pm 6.81$  mmHg at T3, which was significantly lower than that at T1 and T2 ( $P < 0.001$ , Figs 4 and 5, Table 1).

The coefficients of correlation between the differences in the amplitudes ( $\Delta$ amp) at T1 and T2, i.e., T2 minus T1, of each component and the differences of the IOPs at T1 and T2, i.e., T2 minus T1 ( $\Delta$ IOP), were not significant ( $P > 0.05$ , Fig. 6). Similarly, the coefficients of correlation between the differences in the amplitudes at T1 and T3, i.e., T3 minus T1 ( $\Delta$ IOP), of each component and the differences in the IOPs at T1 and T3, i.e., T3 minus T1 ( $\Delta$ IOP) were not significant ( $P > 0.05$ , Fig. 6). Although there was a tendency for the amplitudes of the b-waves, the PhNRs, and the OP2 to be smaller with the higher IOPs at T1 to T2, the differences were not statistically significant.

amplitude (uV)									
a-wave		P value		b-wave		P value		PhNR	P value
T1	18.68 ± 8.30	T1 vs T2	0.58278	68.03 ± 25.23	T1 vs T2	<b>0.0026</b>	21.84 ± 3.45	T1 vs T2	0.30478
T2	17.37 ± 9.48	T1 vs T3	0.66288	52.16 ± 20.59	T1 vs T3	0.54666	18.74 ± 17.00	T1 vs T3	0.34477
T3	18.16 ± 7.63	T2 vs T3	0.74158	65.92 ± 25.59	T2 vs T3	0.01058	24.61 ± 10.35	T2 vs T3	0.12321
implicit time (msec)									
a-wave		P value		b-wave		P value		PhNR	P value
T1	17.47 ± 1.07	T1 vs T2	<b>0.00166</b>	30.26 ± 2.75	T1 vs T2	1	49.57 ± 2.19	T1 vs T2	0.51974
T2	18.89 ± 1.37	T1 vs T3	0.03763	30.26 ± 3.19	T1 vs T3	0.39983	50 ± 3.42	T1 vs T3	0.03218
T3	18.42 ± 2.04	T2 vs T3	0.32435	30.63 ± 3.06	T2 vs T3	0.66689	50.53 ± 2.91	T2 vs T3	0.24204
amplitude (uV)									
OP1		P value		OP2		P value		OP3	P value
T1	8.63 ± 4.06	T1 vs T2	0.01184	23.21 ± 12.00	T1 vs T2	0.00713	5.74 ± 3.65	T1 vs T2	0.09272
T2	5.68 ± 2.89	T1 vs T3	0.20152	15.47 ± 7.24	T1 vs T3	0.09894	4.21 ± 2.99	T1 vs T3	0.13104
T3	7.42 ± 3.99	T2 vs T3	0.13693	20.37 ± 10.15	T2 vs T3	0.05522	4.26 ± 3.01	T2 vs T3	0.94804
implicit time (msec)									
OP1		P value		OP2		P value		OP3	P value
T1	20.63 ± 1.16	T1 vs T2	<b>0.0003</b>	28.32 ± 1.53	T1 vs T2	<b>0.00036</b>	34 ± 2.75	T1 vs T2	<b>0.00555</b>
T2	22.05 ± 1.65	T1 vs T3	0.02811	29.79 ± 2.3	T1 vs T3	0.02451	35.89 ± 3.56	T1 vs T3	0.17793
T3	21.47 ± 1.87	T2 vs T3	0.14975	28.79 ± 1.84	T2 vs T3	<b>0.00193</b>	35 ± 3.28	T2 vs T3	0.10472
intraocular pressure									
		P value							
T1	20.9 ± 6.93	T1 vs T2	<b>1.1E-10</b>						
T2	49.32 ± 8.83	T1 vs T3	<b>4.6E-07</b>						
T3	8.73 ± 6.81	T2 vs T3	<b>2.2E-12</b>						

**Table 1. Changes of the electrophysiological parameters and the intraocular pressure at three time points.**

T1: time point 1, before injection, T2: time point 2, just after injection. T3: time point 3, just after aqueous humor aspiration. PhNR: photopic negative response, OP: oscillatory potential. *P*-value of significance is shown in italic.

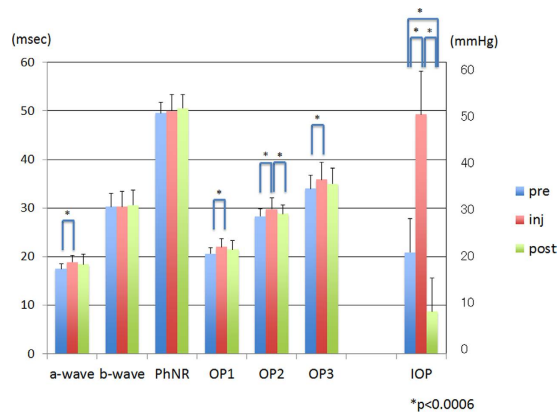
The coefficients of correlation between the differences in the implicit times at T1 and T2, i.e., T2 minus T1 ( $\Delta imp$ ), for each component, and the differences in the IOPs at T1 and T2, i.e., T2 minus T1 ( $\Delta IOP$ ) were not significant ( $P > 0.05$ , Fig. 7). There was a tendency for the implicit times of the b-waves, the OP1s, and OP2s to be more prolonged with increasing IOPs from T1 to T2, but the differences were not statistically significant. However, the relationship between the differences in the implicit times of the OP2 from T1 to the T3, T3 minus T1 ( $\Delta imp$ ), and the differences of the IOPs from T1 to T3, i.e., T3 minus T1 ( $\Delta IOP$ ), were significantly correlated ( $P < 0.05$ , Fig. 7). The implicit time of OP2 was more prolonged with a decrease in the IOP from T1 to T3. Although the difference was not significant, there was a similar tendency in the a-wave, the PhNR, the OP1, and the OP3.

## Discussion

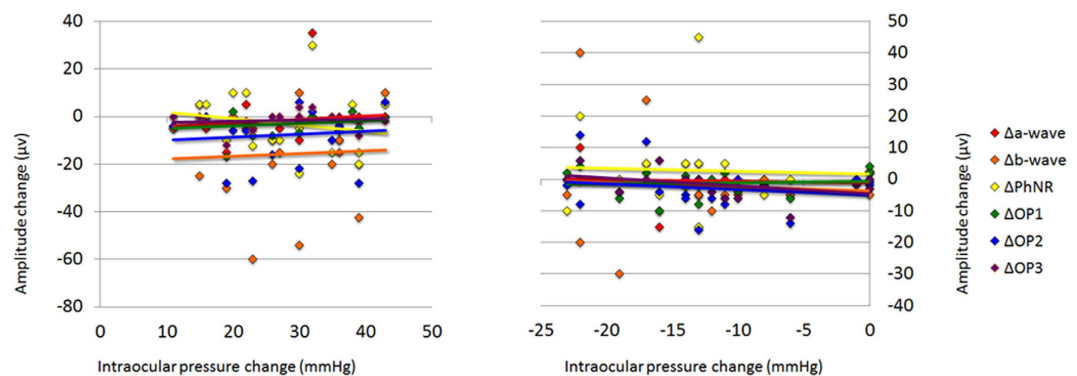
Electrophysiological evaluations of retinal function during eye surgery was first reported by Miyake *et al.*<sup>19–21</sup>. They recorded flicker ERGs and reported significant changes in retinal function during vitreous surgery and scleral buckling surgery<sup>19–21</sup>. We recorded photopic iERGs and IOPs before, just after the intravitreal injections of anti-VEGF drugs, and after AC paracentesis. The photopic ERGs arise from the electrical activities of the cones and inner layer retinal cells that are elicited by light stimuli. The a-wave of the photopic ERGs results from a combination of the electrical activity from the cone photoreceptors and the OFF bipolar cells elicited at the onset of the light stimuli. The b-waves arise mainly from the on-pathway bipolar cells and Müller cells, and the PhNR arises from the electrical activity of the retinal ganglion cells. Photopic ERGs were used to evaluate the functional status of the outer and inner retinal cells of the cone pathway.

Our measurements showed that the retinal function was significantly decreased just after the intravitreal injections in conjunction with significant elevations of the IOP. The ERG components partially recovered to the baseline level just after the aspiration of the anterior chamber fluid which led to a decrease in the IOP. The reduction of the IOP by AC paracentesis (measure T3) did not significantly increase the ERG amplitude but decreased the implicit time. The explanation may be that the T3 measurement values were between the T1 and T2 values, i.e., a partial return to normal. The partial recovery resulted in T3 values that were not different statistically from either of the other two measures.

Thus, the changes in the iERGs are likely related to the IOP increase, but other confounding factors might also be involved, e.g., temperature changes in the vitreous cavity, the effects of the contents of the injected drugs, and condition of the optic nerve. In terms of the intravitreal temperature, a slightly decrease in the temperature probably occurred after the injection. However, measurements of the intraocular temperature with an intravitreal probe would be invasive and was not done. Because the amount of the anti-VEGF agent injected was relative



**Figure 5.** The mean implicit time of each component of the ERG and the mean intraocular pressure (IOP) at each time (T). The mean implicit time of each component except the b-wave and the PhNR at T2 is significantly longer than at T1, and the mean implicit time of the OP2 at T3 was significantly shorter than that at T2. PhNR, photopic negative response; OP, oscillatory potentials; before = T1; immediately after the injection = T2; and immediately after the paracentesis = T3. The error bars represent the standard deviations. The asterisks indicate that the differences were significant at,  $* = P < 0.006$ .

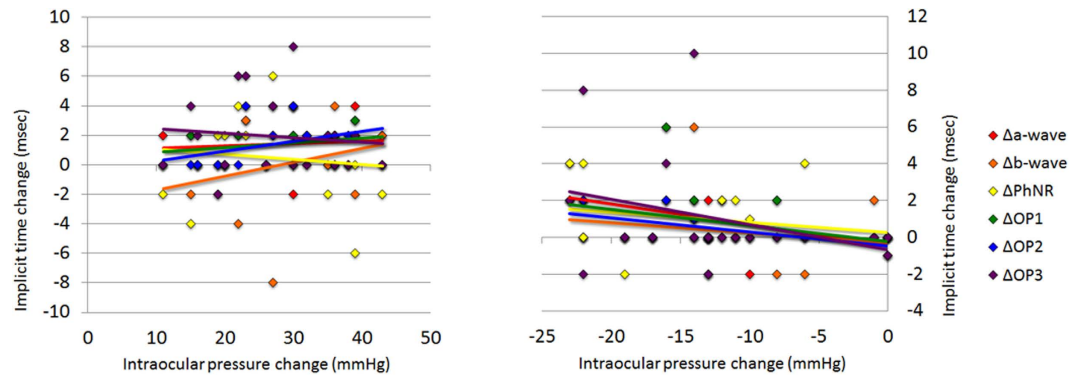


**Figure 6.** Relationship between the amplitude changes and the intraocular pressure (IOP) changes. The coefficients of correlation between the differences in the amplitudes at T1 and T2, i.e., T2 minus T1 ( $\Delta amp$ ), for the different components and the difference in the IOP at T1 and T2, i.e., T2 minus T1 ( $\Delta IOP$ ), are not significant (Fig. 6A). The coefficients of correlation between the differences in the amplitudes at T1 and T3, i.e., T3 minus T1 ( $\Delta IOP$ ), for the different components and the differences in the IOPs at T1 and T3, i.e., T3 minus T1 ( $\Delta IOP$ ) are also not significant (Fig. 6B). Note that for the  $\Delta IOP$  calculations, when the scale reads 'over error' as shown, the IOP was assigned a value of 56 mmHg, and when the scale reads 'under error', the IOP was assigned a value of 4 mmHg. PhNR: photopic negative response, OP: oscillatory potentials.

small compared to the volume of the vitreous cavity, the change in the intraocular temperature was small, and its influence on the ERG responses was most likely limited.

Several investigators have reported that the IOP can increase to 40 to 100 mmHg during different types of eye surgery, e.g., vitrectomy, scleral indentation, phacoemulsification, femtosecond laser-assisted cataract surgery, and laser *in situ* keratomileusis<sup>26–33</sup>. The increase in the IOP is important because it has been reported that the stress on the posterior chamber–anterior hyaloid membrane increases as the IOP increases<sup>34</sup>. In addition, an increase in the IOP above the systolic arterial pressure can damage the retina and other ocular tissues<sup>35</sup>. Even with increases in the IOP to lower levels, retinal ganglion cell damage can be induced in association with an elevation of the extracellular ATP by the abrupt IOP elevation<sup>36</sup>. In addition, there is evidence that wide variations in the IOPs may be directly related to an increase in the postoperative inflammatory processes<sup>37</sup>.

The depression of the retinal function in conjunction with the IOP elevation was most likely due to an impairment of ocular circulation. Yancey *et al.*<sup>38</sup> investigated the effect of IOP elevation on the full-field ERGs and the choroidal oxygen tension ( $PO_2$ ) under dark-adapted conditions in feline eyes. They reported that the choroidal  $PO_2$  and b-wave amplitudes were decreased with increases in the IOP. Tazawa *et al.*<sup>39</sup> recorded full-field ERGs from living extracorporeal bovine eyes, and reported that the b-wave was the first to be decreased, and the a-waves were later decreased under anoxic conditions. With re-perfusion, the a-waves were the first to recover followed by the b-waves. Vadala *et al.*<sup>40</sup> reported that the photopic OPs were altered by IOP elevations. The current results are in good agreement with these results.



**Figure 7. Relationship between the implicit time change and the intraocular pressure (IOP) change.** The coefficients of correlation between the change in the implicit times at T1 and T2, i.e., T2 minus T1 ( $\Delta imp$ ), and the change in the IOPs at T1 and T2, i.e., at T2 minus T1 ( $\Delta IOP$ ), are not significant (Fig. 7A). The relationship between the change of the implicit times from T1 to T3 and the change of the IOPs from T1 to T3, i.e., T3 minus T1 ( $\Delta IOP$ ), are significantly correlated with the change of the OP2 from T1 to T3 (Fig. 7B). Note that for the  $\Delta IOP$  calculations, when the scale reads ‘over error’ as shown, the IOP was assigned a value of 56 mmHg, and when the scale reads ‘under error’, the IOP was assigned a value of 4 mmHg. PhNR: photopic negative response, OP: oscillatory potentials.

Animal experiments<sup>41–43</sup> have shown that the scotopic threshold responses (STR) and OPs, which originate from the activity of the neural cells in the inner retinal layer, were more sensitive to acute IOP elevation than the cells contributing to the a- and b-waves. Chrysostomou *et al.*<sup>44</sup> reported that the PhNR was reduced by an acute elevation of the IOP. The PhNR and the STR are believed to reflect the activity of the inner retinal layer especially the retinal ganglion cells, and our data partly agree with the results of the earlier animal data in that significant alterations in the OPs from T1 to T2 were observed.

Although these changes may be transient and generally do not cause severe and permanent adverse changes, we should remember that the number of intravitreal injections is rapidly increasing, and it may be performed repeatedly on the same eye. Intravitreal injection-associated visual depression has been reported<sup>45,46</sup>. Although the correlations between the number of previous IVIs and the changes in the ERG parameters were not significant, a possibility that repeated intravitreal injections might lead to permanent reductions should be considered especially in eyes with risk factors such as glaucoma, ocular hypertension, uveitis, and optic neuropathy. Recently, Hahn *et al.* reported that prior intravitreal anti-VEGF injections may be a risk factor for cataract surgery-related intraoperative complications and endophthalmitis<sup>47</sup>. Our results highlight the clinical impact of a single intravitreal injection on the retinal function that has not been considered.

Interestingly, the changes were different for the different components of the iERGs. The differences in the degree of alterations of each ERG component suggests different sensitivities of each type of retinal neuron. Some ERG components may respond differently depending on the disease process. For example, the OPs are attenuated in the early stage of diabetic retinopathy<sup>48</sup> because the retinal ganglion cells are susceptible to ischemia<sup>49,50</sup>, and the PhNR may be more altered in eyes with retinal circulatory disorders<sup>51</sup>. The ERG changes may also be related to other unidentified factors rather than just by the IOP. The intravitreal injections may cause changes in the electrolytes and osmolality as well as the temperature which may contribute to the ERG changes<sup>52–54</sup>.

The changes in the ERGs and IOPs were not significantly correlated although there was a tendency that the higher IOP elevations were associated with a greater decrease in some of the components when the T1 and T2 times were compared. These findings should be interpreted cautiously because IOPs over 55 mmHg and under 5 mmHg could not be measured. In addition, the ERG recordings and IOP measurements were not made simultaneously. Therefore, the IOP might be changed during the ERG recordings. The lack of the significant correlation between the ERG and IOP may be attributed to these factors.

Interestingly, the implicit time of the OP2 was more prolonged with a decrease in the IOP from T1 to T3. In addition, there was a similar tendency for the a-waves, the PhNRs, the OP1s, and the OP3s. These findings contradict the observations by Niyadurupola *et al.*<sup>55</sup> who reported that a decrease in the IOP was associated with an increase in the amplitude of the PhNR in eyes with glaucoma and hypertension. Our observation on the prolongation of the implicit time at T3 cannot be compared simply in these studies because it was after T2 when the implicit time had already increased together with the temporal increase of the IOP. Further studies where the IOP is directly reduced from baseline will be helpful to clarify the ERG response during simple IOP lowering.

Our study has several limitations. One is that the retinal pathology of the patients was different. A second limitation is that the tolerance of the retinal function in specific retinal disease against the IOP changes is not well understood. A larger number of patients would enable subgroup analysis with each vitreoretinal disease and then ERG changes during intravitreal injections for specific vitreoretinal diseases can be determined. In addition, the IOP values had a limited range. Taking these limitations into consideration, we still believe that the current data are clinically important.

In conclusion, the results show that the retinal function is reduced and the IOP is elevated just after the intravitreal injection of anti-VEGF drugs. The response of each ERG component to the injections varied suggesting different sensitivities of each type of retinal neuron to the rise in the IOP.

## References

- Rosenfeld, P. J. *et al.* Ranibizumab for neovascular age-related macular degeneration (MARINA). *N Engl J Med* **355**, 1419–1431 (2006).
- Bressler, N. M. Antiangiogenic approaches to age-related macular degeneration today. *Ophthalmology* **116**, S15–S23 (2009).
- Funk, M. *et al.* Neovascular age-related macular degeneration: intraocular cytokines and growth factors and the influence of therapy with ranibizumab. *Ophthalmology* **116**, 2393–2399 (2009).
- Kvanta, A. *et al.* Subfoveal fibrovascular membranes in age-related macular degeneration express vascular endothelial growth factor. *Invest Ophthalmol Vis Sci* **37**, 1928–1934 (1996).
- Adamis, A. P. *et al.* Angiogenesis and ophthalmic disease. *Angiogenesis* **3**, 9–14 (1999).
- Adamis, A. P. & Shima, D. T. The role of vascular endothelial growth factor in ocular health and disease. *Retina* **25**, 111–118 (2005).
- Brown, D. M. *et al.* Ranibizumab for macular edema following central retinal vein occlusion: six-month primary end point results of a phase III study. *Ophthalmology* **117**, 1124–1133 (2010).
- Elman, M. J. *et al.* Randomized trial evaluating ranibizumab plus prompt or deferred laser or triamcinolone plus prompt laser for diabetic macular edema. *Ophthalmology* **117**, 1064–1077 (2010).
- Sharma, P. *et al.* Efficacy of intravitreal ocriplasmin on vitreomacular traction and full-thickness macular holes. *Am J Ophthalmol* **159**, 861–867 (2015).
- Kaiser, P. K. *et al.* Safety profile of ocriplasmin for the pharmacologic treatment of symptomatic vitreomacular adhesion/traction. *Retina* **35**, 1111–1127 (2015).
- Hahn, P. *et al.* Safety profile of ocriplasmin for symptomatic vitreomacular adhesion: A Comprehensive Analysis of Premarketing and Postmarketing Experiences. *Retina* **35**, 1128–1134 (2015).
- Rich, R. M. *et al.* Short-term safety and efficacy of intravitreal bevacizumab (Avastin) for neovascular age-related macular degeneration. *Retina* **26**, 495–511 (2006).
- Fung, A. E. *et al.* The international intravitreal bevacizumab safety survey: using the internet to assess drug safety worldwide. *Br J Ophthalmol* **90**, 1344–1349 (2006).
- Brown, D. M. *et al.* ANCHOR Study Group. Ranibizumab versus verteporfin for neovascular age-related macular degeneration. *N Engl J Med* **355**, 1432–1444 (2006).
- Bakri, S. J. *et al.* Immediate intraocular pressure changes following intravitreal injections of triamcinolone, pegaptanib, and bevacizumab. *Eye (Lond)*. 2009; **23**(1):181–185. and pegaptanib. *Retina* **31**, 1028–1035 (2011).
- Bakri, S. J. *et al.* Intraocular pressure in eyes receiving monthly ranibizumab in 2 pivotal age-related macular degeneration clinical trials. *Ophthalmology* **121**, 1102–1108 (2014).
- Dedania, V. S. & Bakri, S. J. Sustained elevation of intraocular pressure after intravitreal anti-vegf agents: What Is the Evidence? *Retina* **35**, 841–858 (2015).
- Bressler, S. B. *et al.* Diabetic Retinopathy Clinical Research Network Investigators. Repeated intravitreal ranibizumab injections for diabetic macular edema and the risk of sustained elevation of intraocular pressure or the need for ocular hypotensive treatment. *JAMA Ophthalmol* **133**, 589–597 (2015).
- Miyake, Y. *et al.* Electroretinographic monitoring of retinal function during eye surgery. *Arch Ophthalmol* **109**, 1123–1126 (1991).
- Miyake, Y. & Horiguchi, M. Electroretinographic alterations during vitrectomy in human eyes. *Graefes Arch Clin Exp Ophthalmol* **236**, 13–17 (1998).
- Horiguchi, M. & Miyake, Y. Effect of temperature on electroretinograph readings during closed vitrectomy in humans. *Arch Ophthalmol* **109**, 1127–1129 (1991).
- Pong, J. C. Anterior chamber paracentesis in patients with acute elevation of intraocular pressure. *Graefes Arch Clin Exp Ophthalmol* **246**, 463–464 (2008).
- Arnavielle, S. *et al.* Anterior chamber paracentesis in patients with acute elevation of intraocular pressure. *Graefes Arch Clin Exp Ophthalmol* **245**, 345–350 (2007).
- Chang, W. & Chung, M. Efficacy of anterior chamber paracentesis in intravitreal triamcinolone injections. *Eur J Ophthalmol* **17**, 776–779 (2007).
- Fleiss, J. L. *The Design and Analysis of Clinical Experiments*. Hoboken, NJ, USA: John Wiley & Sons, Inc.; doi: 10.1002/9781118032923 (1999).
- Gardner, T. W. *et al.* Intraocular pressure fluctuations during scleral buckling surgery. *Ophthalmology* **100**, 1050–1054 (1993).
- Terauchi, G. *et al.* Effect of intraocular lens diameter implanted in enucleated porcine eye on intraocular pressure induced by scleral depression. *Biomed Res Int* **2014**, 586060 (2014).
- Sugiura, Y. *et al.* Intraocular pressure fluctuation during microincision vitrectomy with Constellation Vision System. *Am J Ophthalmol* **156**, 941–947 (2013).
- Souza, E. V. *et al.* Experimental closed system surgical procedures and intraocular pressure fluctuation. *Acta Cir Bras* **29**, 721–726 (2014).
- Strohmaier, C. *et al.* Profiles of intraocular pressure in human donor eyes during femtosecond laser procedures—a comparative study. *Invest Ophthalmol Vis Sci* **54**, 522–528 (2013).
- Kreutzer, T. C. *et al.* Real-time intraocular pressure measurement in standard and microcoaxial phacoemulsification. *Journal of cataract and refractive surgery* **36**, 53–57 (2010).
- Vasavada, V. *et al.* Real-time dynamic intraocular pressure fluctuations during microcoaxial phacoemulsification using different aspiration flow rates and their impact on early postoperative outcomes: a randomized clinical trial. *Journal of refractive surgery* **30**, 534 (2014).
- Bissen-Miyajima, H. *et al.* Experimental observation of intraocular pressure changes during microkeratome suctioning in laser *in situ* keratomileusis. *J Cataract Refract Surg* **31**, 590–594 (2005).
- Kawasaki, S. *et al.* Influence of elevated intraocular pressure on the posterior chamber-anterior hyaloid membrane barrier during cataract operations. *Arch Ophthalmol* **129**, 751–757 (2011).
- Hughes, W. F. Quantification of ischemic damage in the rat retina. *Exp Eye Res* **53**, 573–582 (1991).
- Resta, V. *et al.* Acute retinal ganglion cell injury caused by intraocular pressure spikes is mediated by endogenous extracellular ATP. *Eur J Neurosci* **25**, 2741–2754 (2007).
- Tamai, K. *et al.* Protective effects of local hypothermia in vitrectomy under fluctuating intraocular pressure. *Exp Eye Res* **65**, 733–738 (1997).
- Yancey, C. M. & Linsenmeier, R. A. The electroretinogram and choroidal PO<sub>2</sub> in the cat during elevated intraocular pressure. *Invest Ophthalmol Vis Sci* **29**, 700–707 (1988).
- Tazawa, Y. & Seaman, A. J. The electroretinogram of the living extracorporeal bovine eye. The influence of anoxia and hypothermia. *Invest Ophthalmol* **11**, 691–698 (1972).



40. Vadalà, M. *et al.* Transient reduction of the ocular perfusion pressure and the oscillatory potentials of the ERG. *Vision Res* **45**, 1341–1348 (2005).
41. Bui, B. V. *et al.* The gradient of retinal functional changes during acute intraocular pressure elevation. *Invest Ophthalmol Vis Sci* **46**, 202–213 (2005). PMID:15623775
42. Fortune, B. *et al.* Selective ganglion cell functional loss in rats with experimental glaucoma. *Invest Ophthalmol Vis Sci* **45**, 1854–1862 (2004).
43. He, Z., Bui, B. V. & Vingrys, A. J. The rate of functional recovery from acute IOP elevation. *Invest Ophthalmol Vis Sci* **47**, 4872–4880 (2006).
44. Chrysostomou, V. & Crowston, J. G. The photopic negative response of the mouse electroretinogram: reduction by acute elevation of intraocular pressure. *Invest Ophthalmol Vis Sci* **54**, 4691–4697 (2013).
45. Hale, B. P. *et al.* Flat Electroretinography and Acute Visual Loss After Ocriplasmin Injection for Vitreomacular Adhesion Complicating Macular Schisis. *Ophthalmic Surg Lasers Imaging Retina* **46**, 888–892 (2015).
46. Reiss, B. *et al.* Transient vision loss after ocriplasmin injection. *Retina* **35**, 1107–1110 (2015).
47. Hahn, P. *et al.* Effect of Prior Anti-VEGF Injections on the Risk of Retained Lens Fragments and Endophthalmitis after Cataract Surgery in the Elderly. *Ophthalmology* **123**, 309–315 (2016).
48. Bresnick, G. H. *et al.* Electroretinographic oscillatory potentials predict progression of diabetic retinopathy. Preliminary report. *Arch Ophthalmol* **102**, 1307–1311 (1984).
49. Osborne, N. N. *et al.* Retinal ischemia: mechanisms of damage and potential therapeutic strategies. *Prog Retin Eye Res* **23**, 91–147 (2004).
50. Hayreh, S. S. *et al.* Central retinal artery occlusion. Retinal survival time. *Exp Eye Res* **78**, 723–736 (2004).
51. Zhao, Y. *et al.* Changes in retinal morphology, electroretinogram and visual behavior after transient global ischemia in adult rats. *PLoS One* **8**, 65555 (2013).
52. Quiñones-Hinojosa, A. *et al.* Metabolic effects of hypothermia and its neuroprotective effects on the recovery of metabolic and electrophysiological function in the ischemic retina *in vitro*. *Neurosurgery* **52**, 1178–1186 (2003).
53. Nao-i, N. *et al.* A comparative study of intraocular irrigating solutions: effects on electroretinography readings during closed vitrectomy in humans. *Acta Ophthalmol Scand* **73**, 521–524 (1995).
54. Javaheri, M. *et al.* Effect of oxygenated intraocular irrigation solutions on the electroretinogram after vitrectomy. *Retina* **27**, 87–94 (2007).
55. Niyadurupola, N. *et al.* Intraocular pressure lowering is associated with an increase in the photopic negative response (PhNR) amplitude in glaucoma and ocular hypertensive eyes. *Invest Ophthalmol Vis Sci* **54**, 1913–1919 (2013).

## Acknowledgements

This work was supported in part by a grant to TI from the Japan Agency for Medical Research and Development, Practical Research Project for Rare/Intractable Diseases (15ek0109072h0002) and by a grant to KS from the Ministry of Education, Culture, Sports, Science and Technology, Japan (25462735).

## Author Contributions

Conception and design of study (K.Y. and K.S.); conduct of study (K.S., S.M., G.T. and M.K.); collection of data (K.S., S.M., G.T. and M.K.); analysis and interpretation of data (K.S., S.M., K.Y. and Y.M.); preparation of the manuscript (K.Y. and K.S.); critical revision (Y.M.); statistical expert (K.Y. and K.S.); obtain funding (K.S. and T.I.); literature search (K.S. and K.Y.); administrative support (E.W., H.M., T.I. and A.M.); and review and approval of the manuscript (K.S., S.M., G.T., K.Y., M.K., E.W., H.M., T.I., A.M. and Y.M.).

## Additional Information

**Competing financial interests:** The authors declare no competing financial interests.

**How to cite this article:** Yagura, K. *et al.* Electroretinographic evaluations of retinal function before, just after, and after intravitreal injections. *Sci. Rep.* **6**, 31104; doi: 10.1038/srep31104 (2016).



This work is licensed under a Creative Commons Attribution 4.0 International License. The images or other third party material in this article are included in the article's Creative Commons license, unless indicated otherwise in the credit line; if the material is not included under the Creative Commons license, users will need to obtain permission from the license holder to reproduce the material. To view a copy of this license, visit <http://creativecommons.org/licenses/by/4.0/>

© The Author(s) 2016