

Research article

Open Access

Structural analysis of three novel trisaccharides isolated from the fermented beverage of plant extracts

Hideki Okada¹, Eri Fukushi², Akira Yamamori¹, Naoki Kawazoe¹,
Shuichi Onodera³, Jun Kawabata² and Norio Shiomi^{*3}

Address: ¹Ohtakakohso, Co, Ltd Otaru 047-0193, Japan, ²Graduate School of Agriculture, Hokkaido University, Sapporo 060-8589, Japan and ³Department of Food and Nutrition Sciences, Graduate School of Dairy Science Research, Rakuno Gakuen University, Ebetsu 069-8501, Japan

Email: Hideki Okada - oelab@ohtakakohso.co.jp; Eri Fukushi - feria@cen.agr.hokudai.ac.jp; Akira Yamamori - oelab-akira@ohtakakohso.co.jp; Naoki Kawazoe - date-lab@ohtakakohso.co.jp; Shuichi Onodera - sdera@rakuno.ac.jp; Jun Kawabata - junk@chem.agr.hokudai.ac.jp; Norio Shiomi* - n-shiomi@rakuno.ac.jp

* Corresponding author

Published: 16 July 2009

Received: 25 March 2009

Chemistry Central Journal 2009, 3:8 doi:10.1186/1752-153X-3-8

Accepted: 16 July 2009

This article is available from: <http://journal.chemistrycentral.com/content/3/1/8>

© 2009 Okada et al

Abstract

Background: A fermented beverage of plant extracts was prepared from about fifty kinds of vegetables and fruits. Natural fermentation was carried out mainly by lactic acid bacteria (*Leuconostoc* spp.) and yeast (*Zygosaccharomyces* spp. and *Pichia* spp.). We have previously examined the preparation of novel four trisaccharides from the beverage: *O*-β-D-fructopyranosyl-(2->6)-*O*-β-D-glucopyranosyl-(1->3)-D-glucopyranose, *O*-β-D-fructopyranosyl-(2->6)-*O*-[β-D-glucopyranosyl-(1->3)]-D-glucopyranose, *O*-β-D-glucopyranosyl-(1->1)-*O*-β-D-fructofuranosyl-(2<->1)-α-D-glucopyranoside and *O*-β-D-galactopyranosyl-(1->1)-*O*-β-D-fructofuranosyl-(2<->1)-α-D-glucopyranoside.

Results: Three further novel oligosaccharides have been found from this beverage and isolated from the beverage using carbon-Celite column chromatography and preparative high performance liquid chromatography. Structural confirmation of the saccharides was provided by methylation analysis, MALDI-TOF-MS and NMR measurements.

Conclusion: The following novel trisaccharides were identified: *O*-β-D-fructofuranosyl-(2->1)-*O*-[β-D-glucopyranosyl-(1->3)]-β-D-glucopyranoside (named "3^G-β-D-glucopyranosyl β, β-isosucrose"), *O*-β-D-glucopyranosyl-(1->2)-*O*-[β-D-glucopyranosyl-(1->4)]-D-glucopyranose (4¹-β-D-glucopyranosyl sophorose) and *O*-β-D-fructofuranosyl-(2->6)-*O*-β-D-glucopyranosyl-(1->3)-D-glucopyranose (6²-β-D-fructofuranosyl laminaribiose).

Background

A beverage was produced by fermentation of an extract from 50 kinds of fruits and vegetables (see Additional file 1) [1,2]. The extract was obtained using sucrose-osmotic pressure in a cedar barrel for seven days and was fermented by lactic acid bacteria (*Leuconostoc* spp.) and yeast (*Zygosaccharomyces* spp. and *Pichia* spp.) for 180 days. The fermented beverage showed scavenging activity against

1,1'-diphenyl-2-picrylhydrazyl (DPPH) radicals, and significantly reduced the ethanol-induced damage of gastric mucosa in rats [1]. Analysis by high performance anion exchange chromatography (HPAEC) showed that this beverage contained high levels of saccharides, estimated between 550 and 590 g/L; mainly glucose and fructose, and a small amount of undetermined oligosaccharides. Recently, it was reported that different positions of glyco-

sidic linkage of oligosaccharide isomers affected physiological properties as well as physical properties [3-5]. Development of HPLC analysis with high sensitivity and separation ability enables the detection and isolation of oligosaccharides in the fermented beverage.

We have previously examined the preparation of saccharides of the fructopyranoside series from the fermented beverage of plant extracts, such as *O*- β -D-fructopyranosyl-(2->6)-D-glucopyranose [2], *O*- β -D-fructopyranosyl-(2->6)-*O*- β -D-glucopyranosyl-(1->3)-D-glucopyranose and *O*- β -D-fructopyranosyl-(2->6)-*O*-[β -D-glucopyranosyl-(1->3)]-D-glucopyranose [6]. The characteristics of *O*- β -D-fructopyranosyl-(2->6)-D-glucopyranose were non-carcinogenicity and low digestibility, and the unfavorable bacteria that produce mutagenic substances did not use the saccharide [7,8]. Recently, we have studied isolation and identification of novel non-reducing trisaccharides, such as *O*- β -D-glucopyranosyl-(1->1)-*O*- β -D-fructofuranosyl-(2<->1)- α -D-glucopyranoside and *O*- β -D-galactopyranosyl-(1->1)-*O*- β -D-fructofuranosyl-(2<->1)- α -D-glucopyranoside from the beverage [9], and those saccharides were confirmed to be produced by fermentation.

In this paper, we have confirmed structures of the novel trisaccharides (Fig. 1): *O*- β -D-fructofuranosyl-(2->1)-*O*-[β -D-glucopyranosyl-(1->3)]- β -D-glucopyranoside (named " 3^C - β -D-glucopyranosyl β , β -isoscucose"), *O*- β -D-glucopyranosyl-(1->2)-*O*-[β -D-glucopyranosyl-(1->4)]-D-glucopyranose (4^1 - β -D-glucopyranosyl sophorose) and *O*- β -D-fructofuranosyl-(2->6)-*O*- β -D-glucopyranosyl-(1->3)-D-glucopyranose (6^2 - β -D-fructofuranosyl laminaribiose), isolated from the fermented beverage using methylation analysis, MALDI-TOF-MS and NMR measurements.

Results and discussion

Saccharides 1, 2 and 3 were isolated from the fermented beverage of plant extracts using carbon-Celite column chromatography, and were shown to be homogeneous using anion exchange HPLC [$t_{R, \text{sucrose}}$ (relative retention time; retention time of sucrose = 1.0): 1.89, 2.23 and 2.40 respectively]. The retention time of saccharides 1, 2 and 3 did not correspond to that of any authentic saccharides [glucose (0.62), fructose (0.68), sucrose (1.00), maltose (1.43), trehalose (0.58), laminaribiose (1.33), raffinose (1.23), 1-kestose (1.47), 6-kestose (1.75), neokestose (1.90), maltotriose (2.59), panose (1.87), nystose (2.06), fructosyl nystose (3.81), *O*- β -D-fructopyranosyl-(2->6)-D-glucopyranose (0.83) [2], *O*- β -D-fructopyranosyl-(2->6)-*O*- β -D-glucopyranosyl-(1->3)-D-glucopyranose (1.74) [6], *O*- β -D-fructopyranosyl-(2->6)-*O*-[β -D-glucopyranosyl-(1->3)]-D-glucopyranose (1.72) [6], *O*- β -D-glucopyranosyl-(1->1)-*O*- β -D-fructofuranosyl-(2<->1)- α -D-glucopyranoside (1.24) [9], *O*- β -D-galactopyranosyl-(1-

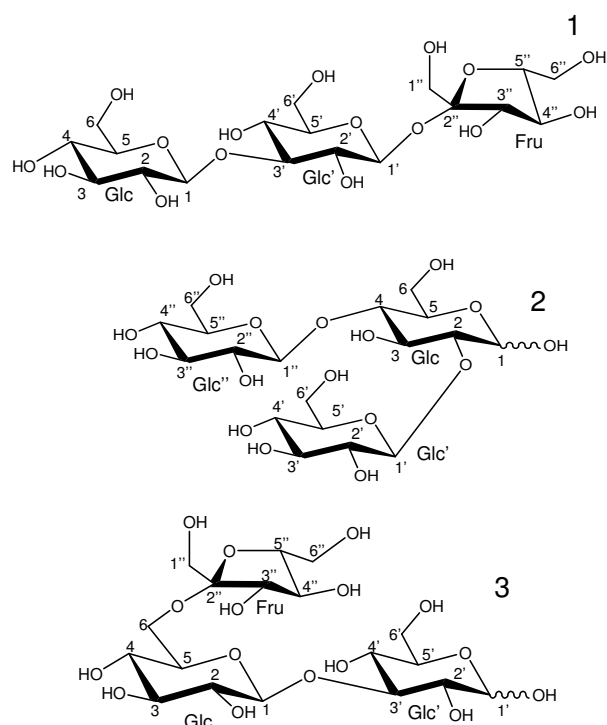


Figure 1
Structures of *O*- β -D-fructofuranosyl-(2->1)-*O*-[β -D-glucopyranosyl-(1->3)]- β -D-glucopyranoside (1), *O*- β -D-glucopyranosyl-(1->2)-*O*-[β -D-glucopyranosyl-(1->4)]-D-glucopyranose (2) and *O*- β -D-fructofuranosyl-(2->6)-*O*- β -D-glucopyranosyl-(1->3)-D-glucopyranose (3).

>1)-*O*- β -D-fructofuranosyl-(2<->1)- α -D-glucopyranoside (0.84) [9], 2(2- α -D-glucopyranosyl)isokestose (1.57) [10], 2(2- α -D-glucopyranosyl)₂isokestose (1.79) [10], 2(2- α -D-glucopyranosyl)₃isokestose (2.09) [10], 2(2- α -D-glucopyranosyl)nystose (2.17) [10], 2(2- α -D-glucopyranosyl)₂nystose (2.63) [10], *O*- α -D-glucopyranosyl-(1->2)-*O*- α -D-xylopyranosyl-(1->2)- β -D-fructofuranoside (1.51) [11], *O*- α -D-glucopyranosyl-(1->2)-*O*- α -D-glucopyranosyl-(1->2)-*O*- α -D-xylopyranosyl-(1->2)- β -D-fructofuranoside (1.80) [11].

The degree of polymerization of saccharides 1, 2 and 3 was established as 3 by measurements of $[M+Na]^+$ ions (m/z : 527) using TOF-MS (see Fig. 2), and analysis of the molar ratios of D-glucose to D-fructose in the acid hydrolysates. Acid hydrolysates of saccharides 1 and 3 were liberated to glucose and fructose, and saccharide 2 was liberated to glucose. From the GC analysis, relative retention times of the methanolysate of the permethylated saccharides were investigated [t_R (relative retention time; retention time of methyl 2, 3, 4, 6-tetra-*O*-methyl- β -D-glucoside = 1.0; retention time, 9.60 min)]. The meth-

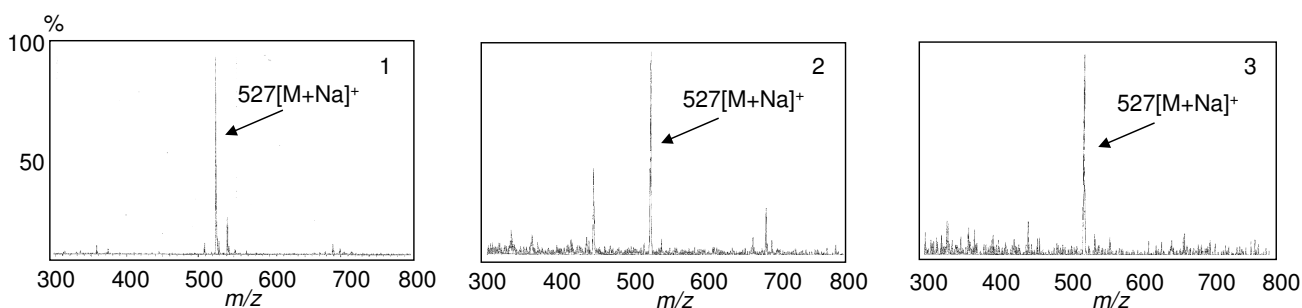


Figure 2
MALDI-TOF-MS spectra of saccharides 1, 2, and 3. 1: saccharide 1, 2: saccharide 2, 3: saccharide 3.

anolysate of permethylated saccharide 1 exhibited six peaks (see Additional file 2) corresponding to methyl 2,3,4,6-tetra-*O*-methyl-*D*-glucoside (t_{R} 0.94 and 1.48), methyl 2,4,6-tri-*O*-methyl-*D*-glucoside (t_{R} 3.27 and 4.81) and methyl 1,3,4,6-tetra-*O*-methyl-*D*-fructoside (t_{R} 1.06 and 1.32). The methanolysate of permethylated saccharide 3 also exhibited six peaks (see Additional file 2) corresponding to methyl 2,3,4-tri-*O*-methyl-*D*-glucoside (t_{R} 2.58 and 3.59), methyl 2,4,6-tri-*O*-methyl-*D*-glucoside (t_{R} 3.22 and 4.73), and methyl 1,3,4,6-tetra-*O*-methyl-*D*-fructoside (t_{R} 1.07 and 1.29). On the other hand, the methanolysate of permethylated saccharide 2 exhibited two peaks (see Additional file 2) corresponding to methyl 2,3,4,6-tetra-*O*-methyl-*D*-glucoside (t_{R} 0.97 and 1.47). GC-MS analysis on the retention times and fragmentation patterns of the methyl glucosides [12] showed the two peaks (10.08 min and 10.21 min) from the methanolysate of permethylated saccharide 2 to be methyl 3,6-di-*O*-methyl-*D*-glucoside. From these findings above, saccharides 1, 2 and 3 were proved to be, *O*-*D*-fructofuranosyl-(2->1)-*O*-[*D*-glucopyranosyl-(1->3)]-*D*-glucopyranoside, *O*-*D*-glucopyranosyl-(1->2)-*O*-[*D*-glucopyranosyl-(1->4)]-*D*-glucose and *O*-*D*-fructofuranosyl-(2->6)-*O*-*D*-glucopyranosyl-(1->3)-*D*-glucose, respectively.

The structural confirmations of saccharides 1, 2 and 3 according to ^1H and ^{13}C NMR analyses and the subsequent complete assignment of ^1H and ^{13}C NMR signals of the three saccharides were carried out using 2D-NMR techniques.

First, the NMR spectra of saccharide 1 were analyzed. The HSQC-TOCSY spectrum revealed the ^1H and ^{13}C signals of each Glc, Glc' and Fru. The isolated methylene was assigned as H-1 and C-1 in Fru. The other three methylene carbons were assigned as C-6 in these residues. The COSY spectrum assigned the spin systems of these residues; from H-1 to H-3 and H-1' to H-3' (Fig. 3(a)), and from H-3'' to

H-6''. The corresponding ^{13}C signals were assigned by HSQC spectrum (Fig. 3(b)). These results clarified the assignment of ^1H and ^{13}C NMR signals of each residue. The position of the glucosidic linkage and fructosidic linkage was analyzed as follows. The C-3' showed the HMBC [13,14] correlations between H-1 (Fig. 3(c)). The J (H-1'/H-2) value was 7.9 Hz. These results indicated the Glc 1 β ->3' Glc linkage, namely the laminaribiose moiety. The C-2'' showed the HMBC correlations to H-1'. The J (H-1'/H-2') value was 7.4 Hz. These results indicated the Glc' 1 β ->2 β Fru linkage, and all ^1H and ^{13}C NMR signals were assigned as shown in Additional file 3.

The coupling patterns of overlapped ^1H were analyzed by the SPT method [15,16]. Due to strong coupling between H-4' and H-5', these couplings could not be analyzed in first order.

The NMR spectra of saccharide 2 showed that it was an anomeric mixture at the Glc. The α anomer was predominant. The COSY spectrum was assigned from H-1 to H-6. The C-4 showed the HMBC correlations between H-1'' (Fig. 4(a) and 4(b)). The J (H-1''/H-2'') value was 7.6–7.8 Hz. These results indicated the Glc'' 1 β ->4 Glc linkage, namely the cellobiose moiety. The C-2 showed the HMBC correlations to H-1'. The J (H-1'/H-2') value was 7.6 Hz. These results indicated the Glc' 1 β ->2 Glc linkage, and all ^1H and ^{13}C NMR signals were assigned as shown in Additional file 3.

The NMR spectra of saccharide 3 were analyzed in the same manner as those of saccharide 2. Saccharide 3 was also an anomeric mixture at the Glc'. The β anomer was predominant. The HSQC-TOCSY spectrum revealed the ^1H and ^{13}C signals of each Glc, Glc' and Fru. The isolated methylene was assigned as H-1'' and C-1''. The other three methylene carbons were assigned as C-6 in these residues (Fig. 5(a)). The position of the glucosidic linkage and fructosidic linkage was analyzed as follows. The C-3'

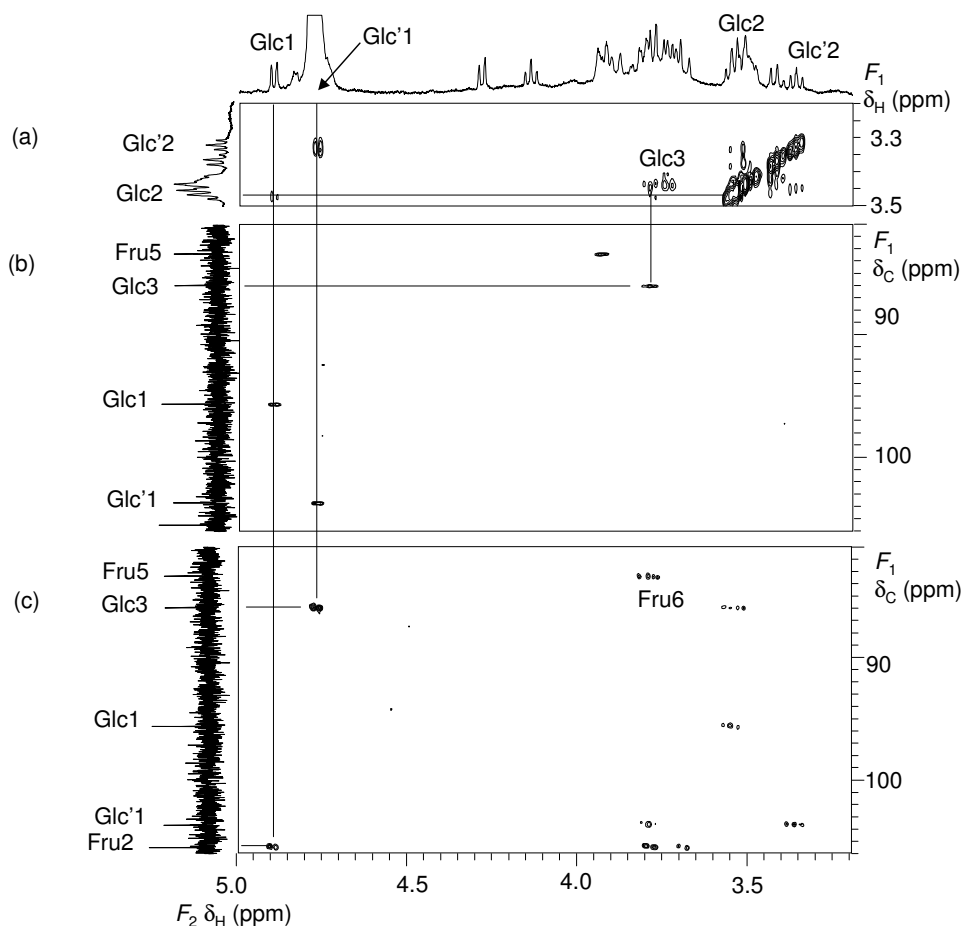


Figure 3
Part of COSY (a), HSQC (b) and HMBC (c) spectra of saccharide I.

showed the HMBC correlations between H-1 (Fig. 5(b)). The J (H-1/H-2) value was 7.9 Hz. These results indicated the Glc 1 β \rightarrow 3 Glc' linkage, namely the laminaribiose moiety. The C-2 showed the HMBC correlations to H-6. These results indicated the Glc 6 \leftarrow 2 β Fru linkage, and all ^1H and ^{13}C NMR signals were assigned as shown in Additional file 3.

From all of these findings, saccharides 1, 2, and 3 from the fermented beverage of plant extracts were confirmed to be new oligosaccharides (Fig. 1): O- β -D-fructofuranosyl-(2->1)-O-[β -D-glucopyranosyl-(1->3)]- β -D-glucopyranoside (named "3^G- β -D-glucopyranosyl β , β -isucrose"), O- β -D-glucopyranosyl-(1->2)-O-[β -D-glucopyranosyl-(1->4)]-D-glucopyranose (4¹- β -D-glucopyranosyl sophorose) and O- β -D-fructofuranosyl-(2->6)-O- β -D-glucopyranosyl-(1->3)-D-glucopyranose (6²- β -D-fructofuranosyl laminaribiose).

Synthesis of the saccharides by fermentation of plant extracts was investigated using HPAEC. Almost all of the monosaccharides were removed from the fermented and unfermented beverages of plant extracts by the batch method with Charcoal. The saccharides 1, 2, and 3 were observed in the fermented beverage, but were not present in the unfermented one. Therefore, saccharides 1, 2, and 3 were confirmed to have been produced during fermentation of the beverage of plant extracts (Fig. 6).

Conclusion

We have previously found that the fermented beverage contained the novel saccharide, O- β -D-fructopyranosyl-(2->6)-D-glucopyranose, which is produced by fermentation. The saccharide showed low digestibility. The saccharide was selectively used by beneficial bacteria, *Bifidobacterium adolescentis* and *B. longum*, but was not used by unfavorable bacteria, *Clostridium perfringens*, *Escherichia coli* and *Enterococcus faecalis* that produce muta-

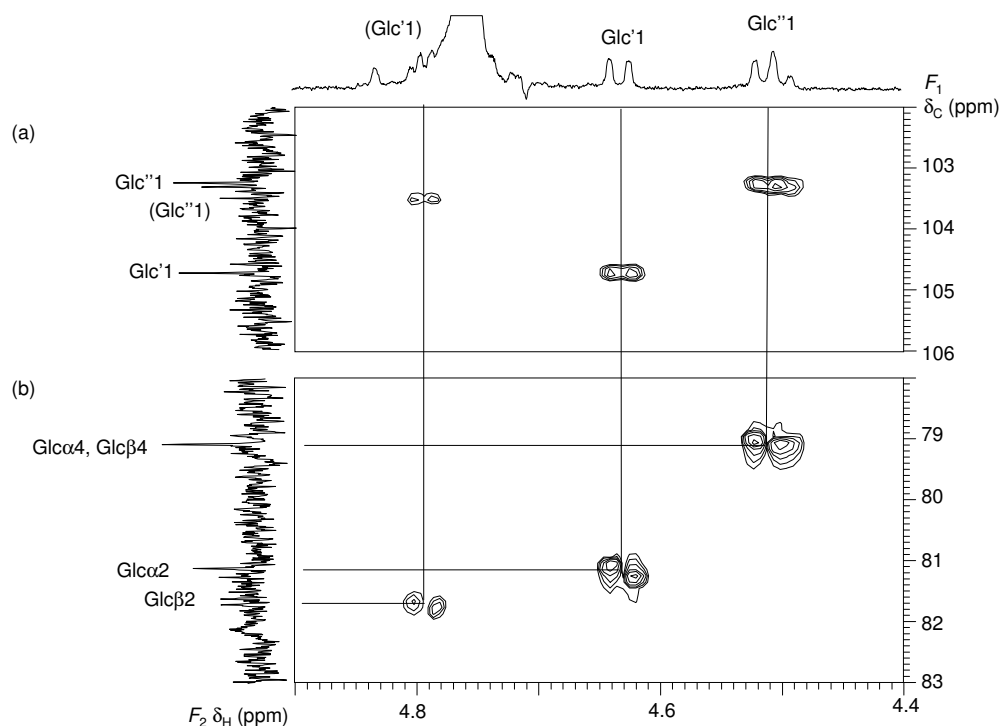


Figure 4
Part of HSQC (a) and HMBC (b) spectra of saccharide 2. () = minor anomer.

genic substances [8]. It is interesting to study the biological functions of other oligosaccharides existing in the beverage. In this report, three novel oligosaccharides have been found from this beverage, and isolated from the beverage using carbon-Celite column chromatography and preparative high performance liquid chromatography. Structural confirmation of the saccharides was provided by methylation analysis, MALDI-TOF-MS and NMR measurements. These saccharides were identified as new trisaccharides: *O*- β -D-fructofuranosyl-(2->1)-*O*-[β -D-glucopyranosyl-(1->3)]- β -D-glucopyranoside (named " 3C - β -D-glucopyranosyl β , β -isosucrose"), *O*- β -D-glucopyranosyl-(1->2)-*O*-[β -D-glucopyranosyl-(1->4)]-D-glucopyranose (4¹- β -D-glucopyranosyl sophorose) and *O*- β -D-fructofuranosyl-(2->6)-*O*- β -D-glucopyranosyl-(1->3)-D-glucopyranose (6²- β -D-fructofuranosyl laminaribiose). These saccharides were confirmed to be produced during fermentation.

Experimental

Preparation of fermented beverage of plant extract

For preparation of the initial juice, 50 kinds of fruits and vegetables were used to produce the final extract as shown in a previous paper [1,2]. The 50 fruits and vegetables were cut, sliced or diced into small pieces, mixed and put in cedar barrels. Afterwards, an equivalent weight of

sucrose was added to the samples, mixed well to allow high contact between the samples and sucrose, and then the barrels were left for one week at room temperature. The juice exudate was then separated without compression from solids and used for fermentation. The fermented beverage was obtained by incubation of the juice at 37 °C in the dark by natural fermentation using yeast (*Zygosaccharomyces* spp. and *Pichia* spp.) and lactic acid bacteria (*Leuconostoc* spp.). After 7 days, the fermented beverage was kept in a closed enameled tank at 37 °C for 180 days for additional maturation and ageing, finally obtaining a brown and slightly sticky liquid.

High performance anion-exchange chromatography (HPAEC)

The oligosaccharides were analyzed using a Dionex Bio LC Series apparatus equipped with an HPLC carbohydrate column (Carbo Pack PA1, inert styrene divinyl benzene polymer) and pulsed amperometric detection (PAD) [17,18]. The mobile phase consisted of eluent A (150 mM NaOH) and eluent B (500 mM sodium acetate in 150 mM NaOH) with a sodium acetate gradient as follows: 0–1 min, 25 mM; 1–2 min, 25–50 mM; 2–20 min, 50–200 mM; 20–22 min, 500 mM; 22–30 min, 25 mM; using a flow rate through the column of 1.0 mL/min. The applied PAD potentials for E1 (500 ms), E2 (100 ms), and E3 (50

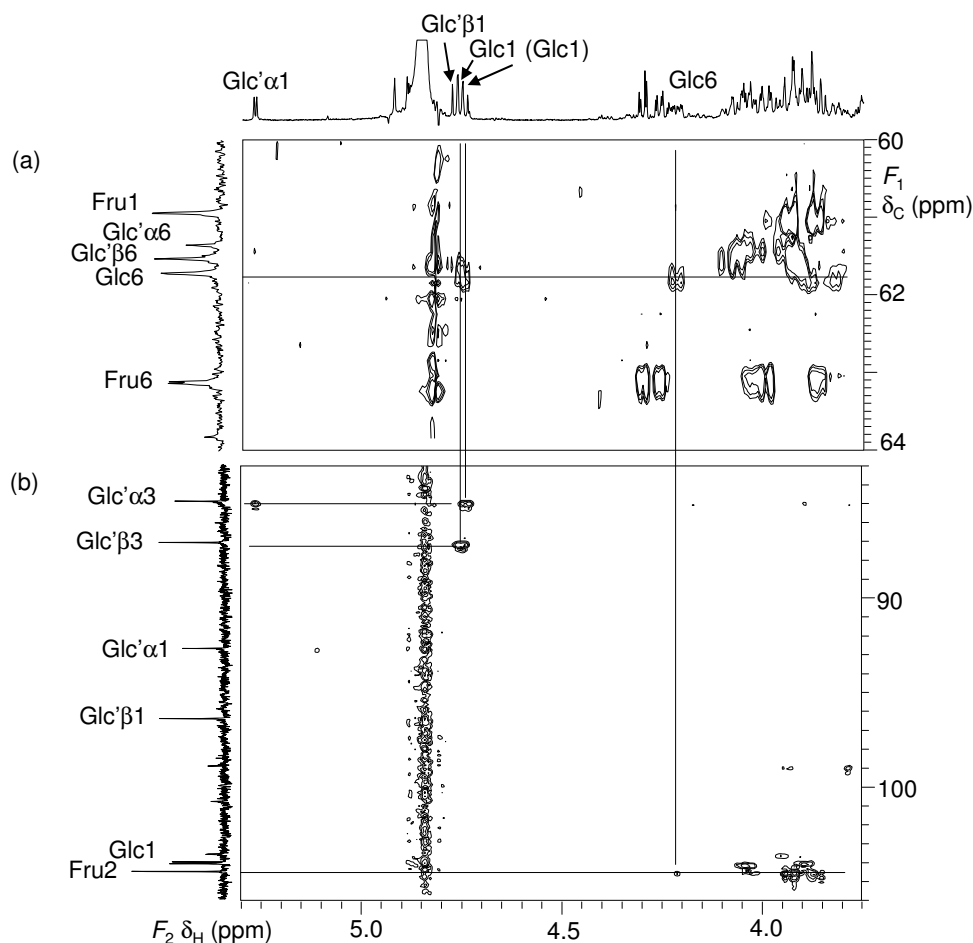


Figure 5
Part of HSQC-TOCSY (a) and HMBC (b) spectra of saccharide 3. () = minor anomer.

ms) were 0.1, 0.6, and -0.6 V respectively, and the output range was 1 μ C.

Isolation of saccharides

The fermented beverage of plant extracts (1000 g) was loaded onto a carbon-Celite [1:1; charcoal (Wako Pure Chemical Industries, Ltd; Osaka, Japan) and Celite-535 (Nacalai Tesque Inc, Osaka, Japan)] column (4.5 \times 35 cm), and was successively eluted with water (14 L), 5% ethanol (30 L) and 30% ethanol (10 L). Almost all of the glucose and fructose were eluted with water (4 L), and then saccharides 1, 2 and 3 were eluted with 30% ethanol (1–2 L). The 30% ethanol fraction containing saccharides 1, 2 and 3 was concentrated *in vacuo* and freeze-dried to give 894 mg of sample. Subsequently, the 30% ethanol fraction was successfully repeatedly purified using an HPLC system (Tosoh, Tokyo, Japan) equipped with an Amide-80 column (7.8 mm \times 30 cm, Tosoh, Tokyo, Japan) at 80°C, and eluted with 80% acetonitrile at 2.0

mL/min, and using refractive index detection. Furthermore, the saccharides were purified by HPLC with the ODS-100 V column (4.6 mm \times 25 cm, Tosoh, Tokyo, Japan) at room temperature, and eluted with water at 0.5 mL/min. Purified saccharides 1 (2.5 mg), 2 (2.2 mg) and 3 (2.0 mg) were obtained as white powders.

Methylation and methanolysis

Methylation of the oligosaccharides was carried out by the method of Hakomori [19]. The permethylated saccharides were methanolized by heating with 1.5% methanolic hydrochloric acid at 96°C for 10 or 180 min. The reaction mixture was treated with Amberlite IRA-410 (OH⁻) to remove hydrochloric acid, and evaporated *in vacuo* to dryness. The resulting methanolysate was dissolved in a small volume of methanol and analyzed using gas liquid chromatography.

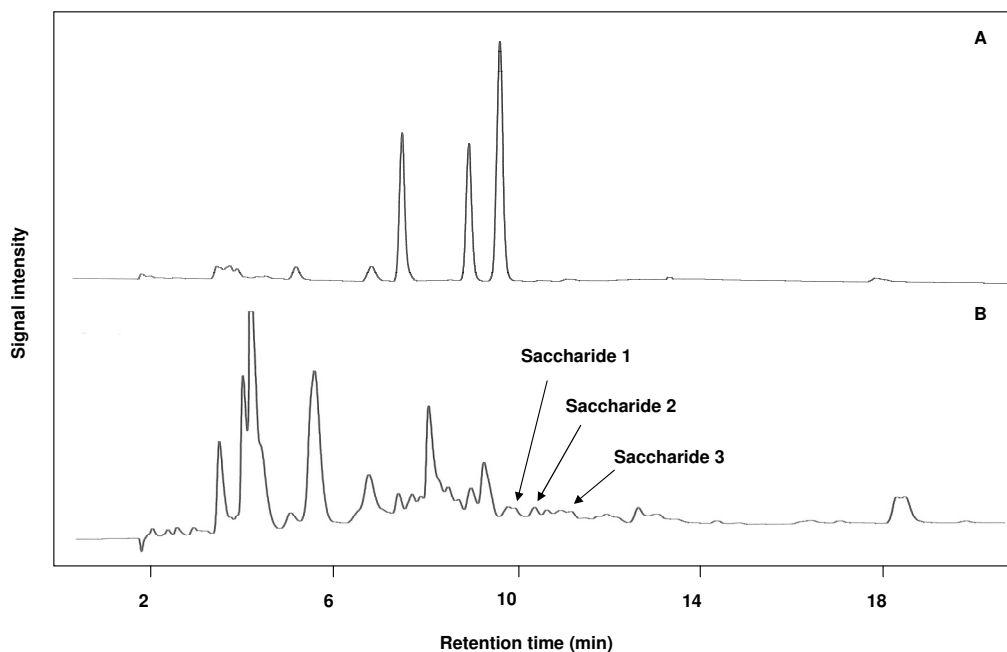


Figure 6

High performance liquid chromatogram of fermentation products. A: The beverage of plant extract was fermented for 0 days. B: The beverage of plant extract was fermented for 180 days. The beverage (100 mL) fermented for 0 or 180 days was mixed with charcoal (10 g), stirred for 3 h. and filtered. The charcoal was extracted with 30% ethanol (500 mL) three times. The ethanol extracts were combined, concentrated to dryness and solubilized with one mL of distilled water. The sugar solution was analyzed by HPAEC.

Gas liquid chromatography (GLC)

For the analysis of the methanolsate, GLC was carried out using a Shimadzu GC-8A gas chromatograph equipped with a glass column (2.6 mm × 2 m) packed with 15% butane 1,4-diol succinate polyester on acid-washed Celite at 175 °C. Flow rate of the nitrogen gas carrier was 40 mL/min.

GC-MS analysis

GC-MS analysis was performed using a JMS-AX500 mass spectrometer (JEOL, Japan) using a DB-17HT capillary column (30 m × 0.25 mm I.D., J & W Scientific, USA). Injection temperature was 200 °C. The column temperature was kept at 50 °C for 2 min after sample injection, increased to 150 °C at 50 °C/min, kept at 150 °C for 1 min, and then increased to 250 °C at 4 °C/min. The mass spectra were recorded in the electron ionization (EI) mode.

MALDI-TOF-MS

MALDI-TOF-MS spectra were measured using a Shimadzu-Kratos mass spectrometer (KOMPACT Probe) in positive ion mode with 2.5%-dihydroxybenzoic acid as a matrix. Ions were formed by a pulsed UV laser beam (nitrogen laser, 337 nm). Calibration was done using 1-kestose as an external standard.

NMR measurement

The saccharide (ca. 2 mg) was dissolved in 0.06 mL (saccharide 1) and 0.4 mL (saccharide 2 and 3) D₂O. NMR spectra were recorded at 27 °C with a Bruker AMX 500 spectrometer (1 H 500 MHz, 13C 125 MHz) equipped with a 2.5 mm C/H dual probe (saccharide 1), a 5 mm diameter C/H dual probe (1D spectra of saccharide 2 and 3), and a 5 mm diameter TXI probe (2D spectra of saccharide 2 and 3). Chemical shifts of ¹H (δ_H) and ¹³C (δ_C) in ppm were determined relative to an external standard of sodium [2, 2, 3, 3-²H₄]-3-(trimethylsilyl)-propanoate in D₂O (δ_H 0.00 ppm) and 1, 4-dioxane (δ_C 67.40 ppm) in D₂O, respectively. ¹H-¹H COSY [20,21], HSQC [22], HSQC-TOCSY [22,23] CH₂-selected E-HSQC-TOCSY [24], HMBC [13,14] and CT-HMBC [13,14] spectra were obtained using gradient selected pulse sequences. The TOCSY mixing time (0.15 s) was composed of DIPSI-2 composite pulses.

Competing interests

The authors declare that they have no competing interests.

Authors' contributions

HO, AY and NK performed data analysis, and contributed to drafting the manuscript. EF and JK collected the NMR

data. NS and SO conceived of the study, participated in its design and contributed to drafting the manuscript. All authors read and approved the final manuscript.

Additional material

Additional file 1

Table S1. Materials of fermented beverage of plant extract.

Click here for file

[<http://www.biomedcentral.com/content/supplementary/1752-153X-3-8-S1.xls>]

Additional file 2

Table S2. Gas-liquid chromatographic analysis of methanolysates of permethylated saccharides 1, 2 and 3.

Click here for file

[<http://www.biomedcentral.com/content/supplementary/1752-153X-3-8-S2.xls>]

Additional file 3

Table S3. ¹H and ¹³C NMR spectral data of saccharides 1, 2 and 3.

Click here for file

[<http://www.biomedcentral.com/content/supplementary/1752-153X-3-8-S3.xls>]

References

- Okada H, Kudoh K, Fukushi E, Onodera S, Kawabata J, Shiomi N: **Antioxidative activity and protective effect of fermented plant extract on ethanol-induced damage to rat gastric mucosa.** *J Jap Soc Nutr Food Sci* 2005, **58**:209-215.
- Okada H, Fukushi E, Yamamori A, Kawazoe N, Onodera S, Kawabata J, Shiomi N: **Structural analysis of a novel saccharide isolated from fermented beverage of plant extract.** *Carbohydr Res* 2006, **341**:925-929.
- Kohmoto T, Fukui F, Takaku H, Machida Y, Arai M, Mitsuoka T: **Effect of isomalto-oligosaccharides on human fecal flora.** *Bifidobacteria Microflora* 1988, **7**:61-69.
- Murosaki S, Muroyama K, Yamamoto Y, Kusaka H, Liu T, Yoshikai Y: **Immunopotentiating activity of nigerooligosaccharides for the T helper I-like immune response in mice.** *Biosci Biotechnol Biochem* 1999, **63**:373-378.
- Murosaki S, Muroyama K, Yamamoto Y, Liu T, Yoshikai Y: **Nigerooligosaccharides augments natural killer activity of hepatic mononuclear cells in mice.** *Int Immunopharmacol* 2002, **2**:151-159.
- Kawazoe N, Okada H, Fukushi E, Yamamori A, Onodera S, Kawabata J, Shiomi N: **Two novel oligosaccharides isolated from a beverage produced by fermentation of a plant extract.** *Carbohydr Res* 2008, **343**:549-554.
- Okada H, Kawazoe N, Yamamori A, Onodera S, Shiomi N: **Structural analysis and synthesis of oligosaccharides isolated from fermented beverage of plant extract.** *J Appl Glycosci* 2008, **55**:143-148.
- Okada H, Kawazoe N, Yamamori A, Onodera S, Kikuchi M, Shiomi N: **Characteristics of O-β-D-fructopyranosyl-(2->6)-D-glucopyranose isolated from fermented beverage of plant extract.** *J Appl Glycosci* 2008, **55**:179-182.
- Kawazoe N, Okada H, Fukushi E, Yamamori A, Onodera S, Kawabata J, Shiomi N: **Structural analysis of two trisaccharides isolated from fermented beverage of plant extract.** *Open Glycosci* 2008, **1**:25-30.
- Okada H, Fukushi E, Onodera S, Nishimato T, Kawabata J, Kikuchi M, Shiomi N: **Synthesis and structural analysis of five novel oligosaccharides prepared by glucosyltransfer from β-D-glucose 1-phosphate to isokestose and nystose using *Thermoanaerobacter brockii* kojibiose phosphorylase.** *Carbohydr Res* 2003, **338**:879-885.
- Takahashi N, Fukushi E, Onodera S, Benkeblia N, Nishimato T, Kawabata J, Shiomi N: **Three novel oligosaccharides synthesized using *Thermoanaerobacter brockii* kojibiose phosphorylase.** *Chem Cent J* 2007, **1**:18.
- Funakoshi I: **Mass spectrum.** In *Seikagaku data book* Edited by: Yamashina I. Tokyo: Tokyokagakudojin; 1979:606-668.
- Bax A, Summers MF: **¹H and ¹³C assignments from sensitivity-enhanced detection of heteronuclear multiple-bond connectivity by 2D multiple quantum NMR.** *J Am Chem Soc* 1986, **108**:2093-2094.
- Hurd RE, John BK: **Gradient-enhanced proton-detected heteronuclear multiple-quantum coherence spectroscopy.** *J Magn Reson* 1991, **91**:648-653.
- Pachler KGR, Wessels PL: **Selective Population Inversion (SPI). A pulsed double resonance method in FT NMR spectroscopy equivalent to INDOR.** *J Magn Reson* 1973, **12**:337-339.
- Uzawa J, Yoshida S: **A new selective population transfer experiment using a double pulsed field gradient spin-echo.** *Magn Reson Chem* 2004, **42**:1046-1048.
- Rocklin RD, Pohl CA: **Determination of carbohydrate by anion exchange chromatography with pulse amperometric detection.** *J Liq Chromatogr* 1983, **6**:1577-1590.
- Johnson DC: **Carbohydrate detection gains potential.** *Nature* 1986, **321**:451-452.
- Hakomori S: **A rapid permethylation of glycolipid and polysaccharide catalyzed by methylsulfinyl carbanion in dimethylsulfoxide.** *J Biochem* 1964, **55**:205-208.
- Aue WP, Batholdi E, Ernst RR: **Two-dimensional spectroscopy. Application to nuclear magnetic resonance.** *J Chem Phys* 1976, **64**:2229-2246.
- von Kienlin M, Moonen CTW, Toorn A von der, van Zijl PCM: **Rapid recording of solvent-suppressed 2D COSY spectra with inherent quadrupole detection using pulsed field gradients.** *J Magn Reson* 1991, **93**:423-429.
- Willker W, Leibfritz D, Kerssebaum R, Bermel W: **Gradient selection in inverse heteronuclear correlation spectroscopy.** *Magn Reson Chem* 1993, **31**:287-292.
- Domte T: **A new method to distinguish between direct and remote signals in proton-relayed X, H correlations.** *J Magn Reson* 1991, **95**:174-177.
- Yamamori A, Fukushi E, Onodera S, Kawabata J, Shiomi N: **NMR analysis of mono- and difructosyllactosucrose synthesized by I^F-fructosyltransferase purified from roots of asparagus (*Asparagus officinalis* L.).** *Magn Reson Chem* 2002, **40**:541-544.

Publish with **ChemistryCentral** and every scientist can read your work free of charge

"Open access provides opportunities to our colleagues in other parts of the globe, by allowing anyone to view the content free of charge."

W. Jeffery Hurst, The Hershey Company.

- available free of charge to the entire scientific community
- peer reviewed and published immediately upon acceptance
- cited in PubMed and archived on PubMed Central
- yours — you keep the copyright



Submit your manuscript here:
<http://www.chemistrycentral.com/manuscript/>

ChemistryCentral