

Negative progesterone receptor status correlates with increased risk of breast cancer recurrence in luminal B HER2-positive and -negative subtypes

Toshiaki Utsumi, MD, PhD¹, Naomi Kobayashi, MD, PhD², Masahiro Hikichi, MD, PhD³, Kaori Ushimado, MD, PhD¹, Makoto Kuroda, MD, PhD⁴

¹Department of Breast Surgery, Fujita Health University, School of Medicine, Okazaki, Aichi, Japan, ²Department of Breast Surgery, Nagoya Red Cross Hospital, Nagoya, Aichi, Japan, ³Department of Breast Surgery, Tohoku Kosai Hospital, Sendai, Miyagi, Japan, ⁴Department of Diagnostic Pathology, Fujita Health University Okazaki Medical Center, Okazaki, Aichi, Japan

Abstract

Objectives: The prognostic significance of the progesterone receptor (PR) has been widely investigated in luminal A and luminal B [human epidermal growth factor receptor 2 (HER2)-] breast cancer subtypes, both of which are estrogen receptor (ER)-positive and HER2-negative. In contrast, few studies have focused on PR status in luminal B (HER2+) tumors. The aim of this study was to evaluate the impact of positive PR status on outcomes in patients with luminal B (HER2-) or luminal B (HER2+) breast cancer.

Methods: Survival analysis was performed to estimate the likelihood of distant recurrence and death in 469 breast cancer patients with the luminal B (HER2-) or luminal B (HER2+) subtype. The relationship between PR and HER2 status was also assessed.

Results: Of 387 luminal B (HER2-) and 82 luminal B (HER2+) cancers, PR+ was significantly more frequent in the former than the latter (86.3% vs. 61.0%, respectively; $P < 0.001$). In univariate analysis, PR was identified as a significant favorable prognostic factor for distant disease-free survival and overall survival in both subtypes, but in multivariate analysis PR was not an independent prognostic factor.

Conclusions: After patients with luminal B subtype were divided into two subgroups according to HER2 status, there was evidence of a relatively good prognosis in the PR+ subgroup. Further studies with a larger number of patients are recommended to validate these findings.

Keywords: Breast cancer, Progesterone receptor (PR), Human epidermal growth factor receptor 2 (HER2), Luminal B subtype

Introduction

Breast cancer is the most common malignancy in women in many countries.¹ Recently, microarray analyses and associated technologies have provided new genetic approaches for examining complicated clinical issues regarding breast cancer outcomes.^{2,3} Studies using microarray techniques have revealed that breast cancer is a heterogeneous collection of subtypes distinguished by distinct aberrations at the molecular level. Several studies on gene expression have shown that breast cancer can be classified into at least five specific subtypes: luminal A, luminal B, human epidermal receptor type 2 (HER2)-overexpressing, basal-like, and normal breast-like.^{2,3} Clinical outcomes have been shown to depend on differences in tumor gene expression patterns.³

It has been revealed that immunohistochemical methods can serve as a surrogate for multigene microarray analysis

to classify breast cancer into subtypes with distinct biological characteristics and clinical outcomes.^{4,5} Therefore, immunohistochemical subtype classification is practical and has been widely used. A statement of the St. Gallen International Expert Consensus includes treatment algorithms based on the classification of breast cancer subtypes according to the immunohistochemistry of estrogen receptor (ER), progesterone receptor (PR), HER2, and Ki67 expression.^{6,7} We previously identified differences in prognosis among breast cancer patients with five distinct immunohistochemical subtypes.⁸

The luminal B subtype is associated with high-grade cancer and poor outcomes.² Interestingly, patients with the luminal B phenotype vary in their prognoses and show different responses to therapeutic strategies. ER and HER2 are important treatment targets in breast cancer.^{7,9} Based on immunohistochemical classification, the luminal B subtype is divided into luminal B (HER2-) and luminal B (HER2+) subtypes according to HER2 status, each of which is associated with different therapeutic strategies.^{7,9} Anti-HER2 therapy is the standard of care for patients with luminal B (HER2+) tumors but not luminal B (HER2-) tumors.^{7,9}

The prognostic significance of PR has been widely investigated in both luminal A and luminal B (HER2-) tumors, both of which are ER-positive and HER2-negative.¹⁰⁻¹² In contrast, few studies have focused on the importance of PR in luminal B

Received 8 July, 2020, Accepted 21 August, 2020.

Published Online 16 December, 2020.

Corresponding author: Toshiaki Utsumi, MD, PhD

Department of Breast Surgery, Fujita Health University, School of Medicine, Fujita Health University Okazaki Medical Center, 1, Gotanda, Harisaki-cho, Okazaki, Aichi 444-0827, Japan

E-mail: tutsumi@fujita-hu.ac.jp

(HER2+) tumors.^{13,14} We compared the prognostic significance of PR between luminal B (HER2-) and luminal B (HER2+) breast cancer.

Patients and Methods

Subjects

A total of 1,704 patients with breast cancer were treated at Fujita Health University Hospital between January 2003 and December 2014. Patients with stage IV, occult, noninvasive cancer, or bilateral disease were excluded from this study. Male patients with breast cancer and patients lost to follow-up immediately after surgery were also excluded. Among 1,132 women with invasive breast cancer, there were 395 women with luminal B (HER2-) cancer (i.e., HER2-, high Ki67, and either ER+ or PR+) and 85 women with luminal B (HER2+) cancer (HER2+ and either ER+ or PR+). The following women were excluded: eight with luminal B (HER2-) tumors that were ER- and PR+, and three with luminal B (HER2+) tumors that were ER- and PR+. Thus, 387 women with the luminal B (HER2-) subtype and 82 with the luminal B (HER2+) subtype were enrolled in this study.

Histological grade was assessed according to the Bloom and Richardson classification system.¹⁵ Survival analysis was performed to estimate the likelihood of distant recurrence and death in 469 breast cancer patients with the luminal B (HER2-) or luminal B (HER2+) subtype. We also assessed the relationship between PR status and HER2 status. This retrospective study was approved by the ethics committee of Fujita Health University (No. HM16-138).

Immunohistochemistry

Immunohistochemical methods were described previously.^{8,16,17} Immunohistochemical staining was performed using the SP1 and 1E2 (Ventana Medical, Tucson, AZ, USA) staining systems for ER and PR, respectively. Positive ER or PR status was defined as the presence of $\geq 1\%$ positive cancer cells. Immunohistochemical assays for HER2 were performed using the Pathway anti-HER2/neu test (Ventana Medical). Fluorescence in situ hybridization (FISH) was performed using the PathVysion HER-2 DNA probe kit (Abbott France SAS, Rungis, France). An immunohistochemistry score of 3+ or FISH amplification was defined as positive. Ki67 staining was performed using a monoclonal antibody against MIB-1 (Dako, Glostrup, Denmark). The Ki67 labeling index was categorized as low (<14%) or high ($\geq 14\%$). All markers were assessed with blinding to the clinical data.

Distant disease-free and overall survival by age group

Distant disease-free survival (DDFS) was calculated from the date of diagnosis to the date of first distant recurrence metastasis or death from any cause. Overall survival (OS) was calculated from the date of diagnosis to the date of death from any cause.¹⁸ We investigated the prognostic factors for DDFS and OS in univariate analyses, and selected multiple covariates (T stage, pathological node status, PR status, chemotherapy, hormone therapy, and trastuzumab therapy).

Statistical analysis

Statistical analyses were performed using SPSS 22.0 software (IBM Corp., Armonk, NY, USA). The chi-squared test or Fisher's exact test was performed for contingency table analysis. Survival

curves were generated using the Kaplan-Meier method.¹⁹ Survival comparisons were made using the log-rank test and Cox proportional hazards multiple regression.

Results

Relationship between PR status and HER2 status

Luminal B cancers were subclassified into luminal B (HER2-) and luminal B (HER2+) cancers according to HER2 status, then further subclassified into luminal B (HER2-) PR+ or luminal B (HER2+) PR+ cancers if PR was positive, and luminal B (HER2-) PR- or luminal B (HER2+) PR- cancers if PR was negative. Of the 469 cancers, 82.5% (n=387) were luminal B (HER2-) and 17.5% (n=82) were luminal B (HER2+). Of the 387 luminal B (HER2-) cancers, 86.3% were PR+ and 13.7% were PR-, and of the 82 luminal B (HER2+) cancers, 61.0% were PR+ and 39.0% were PR-. Luminal B (HER2-) cancers were PR+ significantly more common than luminal B (HER2+) cancers (86.3% vs. 61.0%, respectively; $P < 0.001$, Table 1).

Clinical characteristics of luminal B (HER2-) and luminal B (HER2+) cancers by PR status

Table 2 shows the clinical profiles of the 469 patients with luminal B (HER2-) or luminal B (HER2+) cancer. The patients' median age was 55 years (range, 22-90). Luminal B (HER2+) PR+ cancers were significantly more likely to be early-stage (stage I) than luminal B (HER2+) PR- cancers (32.0% vs. 15.6%, respectively; $P = 0.001$).

Data on pathological node status were missing for 11 women: eight with luminal B (HER2-) cancer and three with luminal B (HER2+) cancer. Of the eight patients with luminal B (HER2-) cancer, seven did not undergo axillary surgery. The remaining patient and the three patients with luminal B (HER2+) cancer had no pathological node involvement after neoadjuvant chemotherapy and no evidence of negative lymph node status before neoadjuvant chemotherapy.

No data were available on grade in six patients with luminal B (HER2-) cancer and four patients with luminal B (HER2+) cancer. Lesions that were luminal B (HER2+) PR+ were less likely to be of unknown histological grade than those that were luminal B (HER2+) PR- (0% vs. 12.5%, respectively; $P = 0.05$).

Regarding the relationship between medical treatment and subtypes, chemotherapy was used in 94.0% of patients with luminal B (HER2+) PR+ cancer and 68.8% of patients with luminal B (HER2+) PR- cancer ($P = 0.003$) (Table 2).

Next, we investigated the relationship between surgical treatment and the four cancer subtypes. The rate of breast-conserving surgery in patients with luminal B (HER2+) PR+ cancer was significantly higher than that in patients with luminal B (HER2+) PR- cancer ($P = 0.028$).

DDFS and OS by PR status

With an overall median follow-up of 4.59 [4.88 (range, 0.40-

Table 1 Relationship between PR and HER2 in 469 women with luminal B breast cancer

	Luminal B (HER2-)	Luminal B (HER2+)	P-value
PR+	334 (86.3%)	50 (61.0%)	
PR-	53 (13.7%)	32 (39.0%)	<0.001

PR, progesterone receptor; HER2, human epidermal growth factor receptor 2

Table 2 Clinical profiles of the 469 patients

	Luminal B (HER2-)			Luminal B (HER2+)		
	PR+	PR-	P-value	PR+	PR-	P-value
Number of patients	334	53		50	32	
Age (years)						
≤39	46 (13.8%)	10 (18.9%)		8 (16.0%)	2 (6.3%)	
40-49	87 (26.0%)	8 (15.1%)		22 (44.0%)	7 (21.9%)	
50-59	71 (21.3%)	7 (13.2%)		9 (18.0%)	10 (31.3%)	
60-69	75 (22.5%)	17 (32.1%)		6 (12.0%)	6 (18.8%)	
≥70	55 (16.5%)	11 (20.8%)	0.147	5 (10.0%)	7 (21.9%)	0.085
Stage						
I	121 (36.2%)	12 (22.6%)		16 (32.0%)	5 (15.6%)	
IIA	133 (39.8%)	20 (37.7%)		16 (32.0%)	12 (37.5%)	
IIB	53 (15.9%)	12 (22.6%)		17 (34.0%)	4 (12.5%)	
IIIA	11 (3.3%)	3 (5.7%)		0 (0%)	6 (18.8%)	
IIIB	13 (3.9%)	5 (9.4%)		1 (2.0%)	4 (12.5%)	
IIIC	3 (0.9%)	1 (1.9%)	0.161	0 (0%)	1 (3.1%)	0.001
T stage						
T1	132 (39.5%)	14 (26.4%)		16 (32.0%)	8 (25.0%)	
T2-4	202 (60.5%)	39 (73.6%)	0.067	34 (68.0%)	24 (75.0%)	0.497
Pathological node status						
Negative	189 (56.6%)	25 (47.2%)		24 (48.0%)	11 (34.4%)	
Positive	137 (41.0%)	28 (52.8%)		24 (48.0%)	20 (62.5%)	
Unknown	8 (2.4%)	0 (0%)	0.174	2 (4.0%)	1 (3.1%)	0.437
Histological grade						
1	48 (14.4%)	3 (5.7%)		6 (12.0%)	6 (18.8%)	
2	186 (55.7%)	29 (54.7%)		37 (74.0%)	18 (56.3%)	
3	94 (28.1%)	21 (39.6%)		7 (14.0%)	4 (12.5%)	
Unknown	6 (1.8%)	0 (0%)	0.132	0 (0%)	4 (12.5%)	0.05
Chemotherapy						
Given	169 (50.6%)	33 (62.3%)		47 (94.0%)	22 (68.8%)	
Not given	165 (49.4%)	20 (37.7%)	0.114	3 (6.0%)	10 (31.3%)	0.003*
Endocrine therapy						
Given	274 (82.0%)	41 (77.4%)		48 (96.0%)	27 (84.4%)	
Not given	60 (18.0%)	12 (22.6%)	0.416	2 (4.0%)	5 (15.6%)	0.078*
Trastuzumab						
Given	3 (0.9%)	0 (0%)		38 (76.0%)	22 (68.8%)	
Not given	331 (99.1%)	53 (100%)	0.489	12 (24.0%)	10 (31.3%)	0.470
Breast surgery						
BCS	197 (59.0%)	30 (56.6%)		28 (56.0%)	10 (31.3%)	
Mastectomy	137 (41.0%)	23 (43.3%)	0.744	22 (44.0%)	22 (68.8%)	0.028
Axillary surgery						
No surgery	7 (2.1%)	0 (0%)		0 (0%)	0 (0%)	
ALND±SNB	127 (38.0%)	26 (49.1%)		29 (58.0%)	21 (65.6%)	
SNB	200 (59.9%)	27 (50.9%)	0.208	21 (42.0%)	11 (34.4%)	0.490

* Fisher's exact test

ER, estrogen receptor; PR, progesterone receptor; HER2, human epidermal growth factor receptor 2; BCS, breast-conserving surgery; ALND, axillary lymph node dissection; SNB, sentinel lymph node biopsy

12.37) years for women with PR+ cancer and 4.47 (range, 0.32–11.37) years for those with PR- cancer], the estimated 5-year DDFS rate was 89.3±1.8% for luminal B PR+ and 79.7±4.8% for luminal B PR- ($P=0.002$) (Table 3 and Figure 1A). The estimated 5-year OS rate was 95.1±1.3% for luminal B PR+ and 83.7±4.6% for luminal B PR- ($P=0.012$) (Table 3 and Figure 1B).

The estimated 5-year DDFS rate was 87.5±2.1% for luminal B (HER2-) PR+ and 79.0±5.9% for luminal B (HER2-) PR- ($P=0.031$) (Table 3 and Figure 1C), while the estimated 5-year OS rate was 94.3±1.5% for luminal B (HER2+) PR+ and 82.2±5.8% for luminal B (HER2+) PR- ($P=0.021$) (Table 3 and Figure 1D). The estimated 5-year DDFS rate was 100% for

luminal B (HER2+) PR+ and 80.6±8.1% for luminal B (HER2+) PR- ($P=0.001$) (Table 3 and Figure 1E). The estimated 5-year OS rate was 100% for luminal B (HER2+) PR+ and 86.1±7.6% for luminal B (HER2+) PR- ($P=0.023$) (Table 3 and Figure 1F).

Patients with PR+ disease generally had more favorable outcomes than those with PR- disease.

Multivariate survival analysis

In women with luminal B (HER2-) cancer, univariate analyses showed that for DDFS, T stage and node status were significant unfavorable prognostic factors and PR was a significant favorable prognostic factor, while for OS, T stage and

node status were significant unfavorable prognostic factors and PR and hormone therapy were significant favorable prognostic

factors. PR and trastuzumab therapy were significant favorable prognostic factors for both DDFS and OS in women with luminal B (HER2+) cancer.

Table 3 DDFS and OS by PR status

	Estimated 5-years DDFS	P-value	Estimated 5-years OS	P-value
All patients				
PR+	89.3±1.8%		95.1±1.3%	
PR-	79.7±4.8%	0.002	83.7±4.6%	0.012
Luminal B (HER2-) subgroup				
PR+	87.5±2.1%		94.3±1.5%	
PR-	79.0±5.9%	0.031	82.2±5.8%	0.021
Luminal B (HER2+) subgroup				
PR+	100%		100%	
PR-	80.6±8.1%	0.001	86.1±7.6%	0.023

DDFS, distant disease-free survival; OS, overall survival; PR, progesterone receptor; HER2, human epidermal growth factor receptor 2

Chemotherapy was not associated with DDFS or OS. A multivariate analysis to determine independent predictors of survival in women with luminal B (HER2-) cancer identified node status as significant for DDFS, and node status and hormone therapy as significant for OS (Table 4). Trastuzumab therapy was a significant prognostic factor for DDFS in luminal B (HER2+) tumors (Table 4).

Discussion

Several studies have investigated the importance of PR as a prognostic factor in luminal A and luminal B (HER2-) breast cancer subtypes, but few have evaluated the relationship between PR status and the luminal B (HER2+) subtype.¹⁰⁻¹⁴ Since the PR is the end product of estrogen action, PR

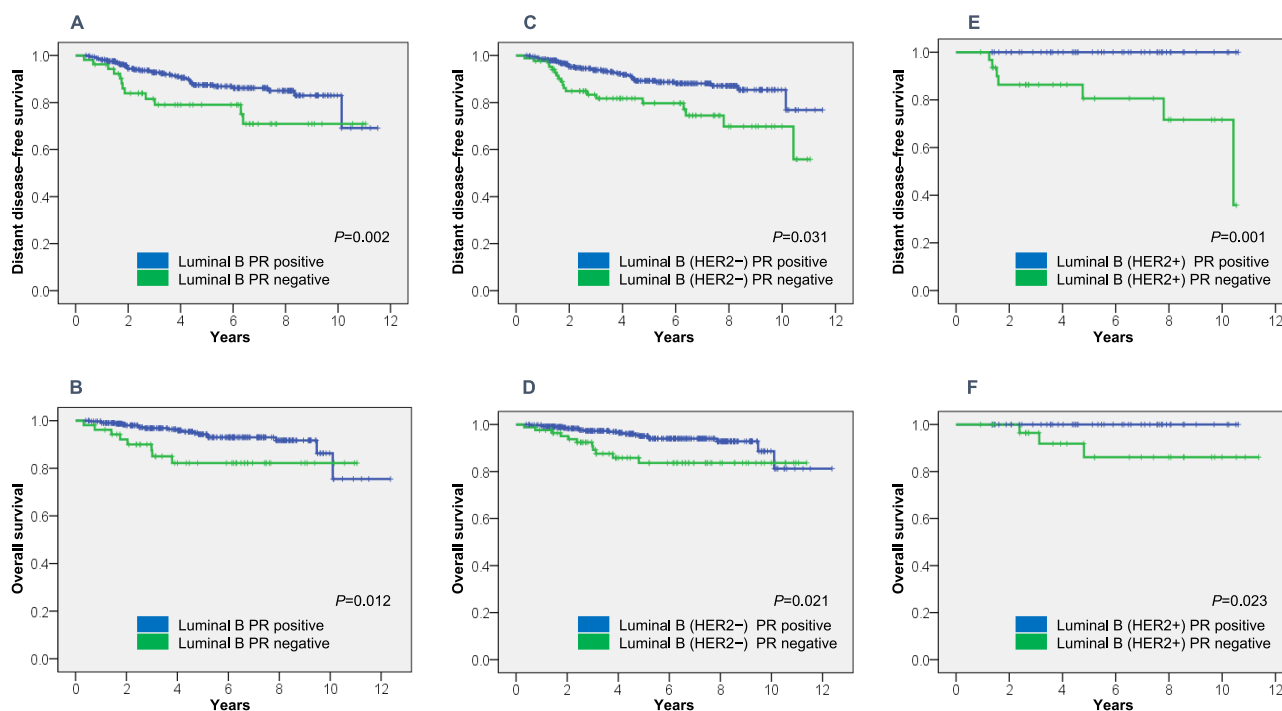


Figure 1 DDFS and OS in 469 women with breast cancer. (A) DDFS in patients with luminal B cancer, (B) OS in patients with luminal B cancer, (C) DDFS in patients with luminal B (HER2-) cancer, (D) OS in patients with luminal B (HER2-) cancer, (E) DDFS in patients with luminal B (HER2+) cancer, and (D) OS in patients with luminal B (HER2+) cancer.

Table 4 Multivariate Cox analysis of DDFS and OS

Covariate	DDFS			OS		
	Univariate	Multivariate		Univariate	Multivariate	
	P value	P-value	Hazard ratio (95% CI)	P-value	P-value	Hazard ratio (95% CI)
Luminal B (HER2-) subgroup						
T stage (T2-T4/T1)	0.014	0.137		0.047	0.093	
Node status (positive/negative)	<0.001	<0.001	6.112 (2.827-13.214)	0.001	0.004	4.114 (1.591-10.636)
PR (positive/negative)	0.031	0.151		0.021	0.360	
Hormone therapy (yes/no)				0.008	0.003	0.266 (0.112-0.632)
Luminal B (HER2+) subgroup						
PR (positive/negative)	0.001	0.944		0.023	0.385	
Trastuzumab therapy (yes/no)	0.005	0.037	0.101 (0.012-0.871)	0.009	0.372	

DDFS, distant disease-free survival; OS, overall survival

expression is generally thought to depend on ER activity, with a lack of PR reflecting a nonfunctional ER and resistance to hormonal therapy.^{20,21} Some studies have identified alternative molecular mechanisms that may explain the loss of PR.^{22,23} Experimental results have suggested that differences in outcomes and selective ER modulator resistance among ER+/PR- breast cancers are because of growth factors that reduce PR levels.^{22,23}

In this study, we examined the relationship between PR and HER2 status, the clinical characteristics of the luminal B (HER2-) and luminal B (HER2+) subtypes, and the prognostic importance of PR in these two subtypes.

We found an inverse correlation between PR and HER2 status, which is consistent with the results of previous studies.²³⁻²⁶ Some studies have shown that ER+ and PR- tumors express higher levels of HER1 and HER2 and display more aggressive features than ER+ and PR+ tumors.²² The HER family lies upstream of the phosphatidylinositol 3-kinase (PI3K)/serine-threonine protein kinase (AKT)/mammalian target of rapamycin (mTOR) signaling pathway.²⁷ Moreover, a recent preclinical study demonstrated that PR expression was reduced via the PI-3K/AKT pathway.²⁸ These findings may support our clinical results.

Luminal B (HER2+) PR+ cancers were significantly more likely to be early-stage (stage I) than luminal B (HER2+) PR- cancers (32.0% vs. 15.6%, respectively; $P=0.001$), but there was no significant difference in stage between the luminal B (HER2-) PR+ and luminal B (HER2-) PR- subtypes. We have insufficient data to explain the reasons for these results. The luminal B (HER2+) PR+ subgroup received chemotherapy more frequently than the luminal B (HER2+) PR- subgroup, probably because the proportion of patients over 70 years old was almost twice as high in the latter subgroup than in the former.

Interestingly, univariate analysis showed that PR was a significant prognostic factor for DDFS and OS in both the luminal B (HER2-) and luminal B (HER2+) subtypes. These findings are similar to those identified in a study by Cancellato et al.¹³ Multivariate analysis, however, showed that PR was not an independent predictor of survival in either subtype; possible reasons include the fact that PR is a relatively weak prognostic factor and the sample size was small. If we can identify a high-risk group in the luminal B (HER2-) and/or luminal B (HER2+) subtypes, we should consider a strategy for personalized therapy for improving the outcomes of this high-risk group. For example, if the prognosis of patients with PR-negative tumors in these subtypes is definitely poor, we should consider increasing the intensity of the treatment for these patients to improve their prognosis.

Our study has several limitations. First, it was a retrospective, single-center study and therefore may have been prone to selection bias. Second, the number of patients was relatively small, especially in the group with the luminal B (HER2+) subtype. Since small studies cannot yield definitive results, care should be taken when interpreting our findings. A larger observational series might yield additional data. Despite these limitations, our study has several strengths. First, it analyzed precise data regarding pathological factors and clinical outcomes in both subtype groups. Second, the significance of PR status was well characterized in the luminal B (HER2-) subtype, but not in the luminal B (HER2+) subtype. Our study indicates the need for research on the biological significance of PR in the latter subtype.

In conclusion, after dividing the luminal B subtype group into two subgroups according to HER2 status, we provided evidence of a relatively good prognosis in the PR+ subgroup. Further studies with a larger number of patients are recommended to validate our findings.

Acknowledgment

We thank H. Nikki March, PhD, from Edanz Group (<https://en-author-services.edanzgroup.com/ac>) for editing a draft of this manuscript.

Conflicts of Interest

The authors declare that they have no conflicts of interest.

Research Involving Human Participants

This study has been approved by the appropriate institutional research ethics committee. It was performed in accordance with the ethical standards outlined in the 1964 Declaration of Helsinki and its later amendments or with comparable ethical standards.

Informed Consent

For this type of study, formal informed consent was not required.

References

1. Bray F, Ferlay J, Soerjomataram I, Siegel RL, Torre LA, Jemal A. Global cancer statistics 2018: GLOBOCAN estimates of incidence and mortality worldwide for 36 cancers in 185 countries. *CA Cancer J Clin* 2018; 68: 394-424.
2. Perou CM, Sorlie T, Eisen MB, et al. Molecular portraits of human breast tumours. *Nature* 2000; 406: 747-52.
3. Sorlie T, Tibshirani R, Parker J, et al. Repeated observation of breast tumor subtypes in independent gene expression data sets. *Proc Natl Acad Sci U S A* 2003;100: 8418-23.
4. Cheang MC, Chia SK, Voduc D, Gao D, Leung S, Snider J, Watson M, Davies S, Bernard PS, Parker JS, Perou CM, Ellis ML, Nielson TO. Ki67 index, HER2 status, and prognosis of patients with luminal B breast cancer. *J Natl Cancer Inst* 2009; 101: 736-50.
5. Jacquemier J, Ginestier C, Rougemont J, Bardou VJ, Charafe-Jauffret E, Geneix J, Adelaide J, Koki A, Houvenaeghel G, Hassoun J, Maraninchi D, Viens P, Birnbaum D, Bertucci F. Protein expression profiling identifies subclasses of breast cancer and predicts prognosis. *Cancer Res* 2005; 65: 767-9.
6. Goldhirsch A, Wood WC, Coates AS, Gelber RD, Thürlimann B, Senn HJ. Strategies for subtypes—dealing with the diversity of breast cancer: highlights of the St. Gallen International Expert Consensus on the Primary Therapy of Early Breast Cancer 2011. *Ann Oncol* 2011; 22: 1736-47.
7. Goldhirsch A, Winer EP, Coates AS, Gelber RD, Piccart-Gebhart M, Thürlimann B, Senn HJ. Personalizing the treatment of women with early breast cancer: highlights of the St Gallen International Expert Consensus on the Primary Therapy of Early Breast Cancer 2013. *Ann Oncol* 2013; 24: 2206-23.
8. Kobayashi N, Hikichi M, Ushimado K, Sugioka A, Kiriya Y, Kuroda M, Utsumi T. Differences in subtype distribution between screen-detected and symptomatic invasive breast cancer and their impact on survival. *Clin Transl Oncol* 2017; 19: 1232-40.
9. Curigliano G, Burstein HJ, Winer EP, et al. De-escalating and escalating treatments for early-stage breast cancer: the St. Gallen International Expert Consensus Conference on the Primary Therapy

- of Early Breast Cancer 2017. *Ann Oncol* 2017; 28: 1700–12.
10. Early Breast Cancer Trialists' Collaborative Group (EBCTCG), Davies C, Godwin J, Gray R, Clarke M, Cutter D, Darby S, McGale P, Pan HC, Taylor C, Wang YC, Dowsett M, Ingle J, Peto R. Relevance of breast cancer hormone receptors and other factors to the efficacy of adjuvant tamoxifen: patient-level meta-analysis of randomised trials. *Lancet* 2011; 378: 771–84.
 11. Bardou VJ, Arpino G, Elledge RM, Osborne CK, Clark GM. Progesterone receptor status significantly improves outcome prediction over estrogen receptor status alone for adjuvant endocrine therapy in two large breast cancer databases. *J Clin Oncol* 2003; 21: 1973–9.
 12. Ono M, Tsuda H, Yoshiada M, Shimizu C, Kinoshita K, Tamura K. Prognostic Significance of Progesterone Receptor Expression in Estrogen-Receptor Positive, HER2-Negative, Node-Negative Invasive Breast Cancer With a Low Ki-67 Labeling Index. *Clin Breast Cancer* 2017; 17: 41–7.
 13. Cancellò G, Maisonneuve P, Rotmensz N, Viale G, Mastropasqua MG, Pruneri G, Montagna E, Iorfida M, Mazza M, Balduzzi A, Veronesi P, Luini A, Intra M, Goldhirsch A, Colleoni M. Progesterone receptor loss identifies Luminal B breast cancer subgroups at higher risk of relapse. *Ann Oncol* 2013; 24: 661–8.
 14. Chen S, Huang L, Chen CM, Shao ZM. Progesterone receptor loss identifies luminal-type local advanced breast cancer with poor survival in patients who fail to achieve a pathological complete response to neoadjuvant chemotherapy. *Oncotarget* 2015; 6: 18174–82.
 15. Bloom HJ, Richardson WW. Histological grading and prognosis in breast cancer; a study of 1409 cases of which 359 have been followed for 15 years. *Br J Cancer* 1957; 11: 359–77.
 16. Ushimado K, Kobayashi N, Hikichi M, Tsukamoto T, Kuroda M, Utsumi T. Differences in clinicopathologic features and subtype distribution of invasive breast cancer between women older and younger than 40 years. *Fujita Medical Journal* 2019; 5: 92–7.
 17. Ushimado K, Kobayashi N, Hikichi M, Tsukamoto T, Urano M, Utsumi T. Inverse correlation between Ki67 expression as a continuous variable and outcomes in luminal HER2–negative breast cancer. *Fujita Medical Journal* 2019; 5: 72–8.
 18. Hudis CA, Barlow WE, Costantino JP, Gray RJ, Pritchard KI, Chapman JA, Hunsberger S, Enos RA, Gelber RD, Zujewski JA. Proposal for standardized definitions for efficacy end points in adjuvant breast cancer trials: the STEEP system. *J Clin Oncol* 2007; 25: 2127–32.
 19. Kaplan EL, Meier P. Nonparametric estimation for incomplete observations. *J Am Stat Assoc* 1958; 53: 457–81.
 20. Horwitz KB, McGuire WL. Predicting response to endocrine therapy in human breast cancer: a hypothesis. *Science* 1975; 189: 726–7.
 21. Horwitz KB, McGuire WL. Estrogen control of progesterone receptor in human breast cancer. Correlation with nuclear processing of estrogen receptor. *J Biol Chem* 1978; 253: 2223–8.
 22. Cui X, Schiff R, Arpino G, Osborne CK, Lee AV. Biology of progesterone receptor loss in breast cancer and its implications for endocrine therapy. *J Clin Oncol* 2005; 23: 7721–35.
 23. Arpino G, Weiss H, Lee AV, Schiff R, De Placido S, Osborne CK, Elledge RM. Estrogen receptor-positive, progesterone receptor-negative breast cancer: association with growth factor receptor expression and tamoxifen resistance. *J Natl Cancer Inst* 2005; 97: 1254–61.
 24. Dowsett M, Harper-Wynne C, Boeddinghaus I, Salter J, Hills M, Dixon M, Ebbs S, Gui G, Sacks N, Smith I. HER-2 amplification impedes the antiproliferative effects of hormone therapy in estrogen receptor-positive primary breast cancer. *Cancer Res* 2001; 61: 8452–8.
 25. Huang HJ, Neven P, Drijkoningen M, Paridaens R, Wildiers H, Van Limbergen E, Berteloot P, Amant F, Christiaens MR, Vergote I. Association between HER-2/neu and the progesterone receptor in oestrogen-dependent breast cancer is age-related. *Breast Cancer Res Treat* 2005; 91: 81–7.
 26. Dixon JM, Jackson J, Hills M, Renshaw L, Cameron DA, Anderson TJ, Miller WR, Dowsett M. Anastrozole demonstrates clinical and biological effectiveness in oestrogen receptor-positive breast cancers, irrespective of the erbB2 status. *Eur J Cancer* 2004; 40: 2742–7.
 27. Ross JS, Fletcher JA, Bloom KJ, Linette GP, Stec J, Symmans WF, Pusztai L, Hortobagyi GN. Targeted therapy in breast cancer: the HER-2/neu gene and protein. *Mol Cell Proteomics* 2004; 3: 379–98.
 28. Cui X, Zhang P, Deng W, Oesterreich S, Lu Y, Mills GB, Lee AV. Insulin-like growth factor-I inhibits progesterone receptor expression in breast cancer cells via the phosphatidylinositol 3-kinase/Akt/mammalian target of rapamycin pathway: progesterone receptor as a potential indicator of growth factor activity in breast cancer. *Mol Endocrinol* 2003; 17: 575–88.

Copyright©2021 Toshiaki Utsumi, MD, PhD et al. 

This is an Open access article distributed under the Terms of Creative Commons Attribution License, which permits unrestricted use, distribution, and reproduction in any medium, provided the original author(s) and source are credited.