

ORIGINAL ARTICLE

Association of consciousness impairment and mortality in people with COVID-19

Weixi Xiong^{1,2}  | Lu Lu^{1,2} | Baiyang Zhang³ | Jianfei Luo⁴ | Weimin Li⁵ | Li He^{1,2}  | Josemir W. Sander^{1,2,6,7,8}  | Jie Mu^{1,2} | Cairong Zhu³ | Dong Zhou^{1,2} 

¹Department of Neurology, West China Hospital of Sichuan University, Chengdu, China

²Institute of Brain Science and Brain-inspired technology of West China Hospital, Sichuan University, Chengdu, China

³West China School of Public Health and West China Fourth Hospital, Sichuan University, Chengdu, China

⁴Department of Gastrointestinal Surgery, Renmin Hospital of Wuhan University, Wuhan, China

⁵Department of Pulmonary & Critical Care Medicine, West China Hospital of Sichuan University, Chengdu, China

⁶UCL Queen Square Institute of Neurology, NIHR University College London Hospitals Biomedical Research Centre, London, UK

⁷Chalfont Centre for Epilepsy, Chalfont St Peter, UK

⁸Stichting Epilepsie Instellingen Nederland (SEIN), Heemstede, Netherlands

Correspondence

Jie Mu and Dong Zhou, Department of Neurology, West China Hospital of Sichuan University, Chengdu, 610041, Sichuan, China.

Emails: mujie2010@foxmail.com (JM); dongzhou66@yahoo.de (DZ)

Cairong Zhu, West China School of Public Health and West China Fourth Hospital, Sichuan University, Chengdu, China. Email: cairong.zhu@hotmail.com

Funding information

This work was supported by grants from the National Natural Science Foundation of China (81801294, 81871017 and 81420108014), and the 1.3.5 project for disciplines of excellence, West China Hospital, Sichuan University (ZY2017305, ZYGD20011).

Background: To investigate the association between impairment of consciousness and risk of death in people with COVID-19.

Methods: In this multicentre retrospective study, we enrolled people with confirmed COVID-19 from 44 hospitals in Wuhan and Sichuan, China, between 18 January and 30 March 2020. We extracted demographics, clinical, laboratory data and consciousness level (as measured by the Glasgow Coma Scale (GCS) score) from medical records. We used Cox proportional hazards regression, structural equation modelling and survival time analysis to compare people with different progressions of impaired consciousness.

Results: We enrolled 1,143 people (average age $51.3 \pm$ standard deviation 17.1-year-old; 50.3% males), of whom 76 died. Increased mortality risk was identified in people with GCS score between 9 and 14 (hazard ratio (HR) 46.76, $p < .001$) and below 9 (HR 65.86, $p < .001$). Pathway analysis suggested a significant direct association between consciousness level and death. Other factors, including age, oxygen saturation level and pH, had indirect associations with death mediated by GCS scores. People who developed impaired consciousness more rapidly either from symptoms onset (<10 days vs. 10–19 days, $p = .025$, <10 days vs. ≥ 20 days and 10–19 days vs. ≥ 20 days, $<.001$) or deterioration of oxygen saturation (≤ 2 days vs. >2 days, $p = .028$) had shorter survival times.

Conclusion: Altered consciousness and its progression had a direct link with death in COVID-19. Interactions with age, oxygen saturation level and pH suggest possible

Weixi Xiong, Lu Lu and Baiyang Zhang, authors equally contributed do this work.

© 2021 John Wiley & Sons A/S. Published by John Wiley & Sons Ltd

pathophysiology. Further work to confirm these findings explore prevention strategies and interventions to decrease mortality is warranted.

KEYWORDS

death, Glasgow Coma Scale, outcomes, risk factors

1 | INTRODUCTION

COVID-19, caused by a novel coronavirus (SARS-CoV-2), is a severe acute respiratory syndrome first reported in Wuhan, China, in December 2019.¹ It evolved rapidly into a global pandemic.² The main clinical presentations include fever, cough and shortness of breath; copious sputum production and haemoptysis and other non-specific symptoms are also seen.³ Critical neurological events, including impairment of consciousness and cerebrovascular accidents, have been reported.⁴⁻⁹ Impairment of consciousness is one of the most typical neurological manifestations, especially in severe, often fatal conditions. One study reported that altered consciousness at admission was a predictor for developing critical illness.¹⁰ It has also been reported that older age, male sex and the presence of comorbidities were risk factors of higher mortality.^{11,12} Reports of the association of consciousness impairment during the illness course and outcomes are lacking, as levels and progression of altered consciousness have not been fully evaluated previously.

We aimed to investigate the associations between altered consciousness with differing time courses and death in COVID-19 and to estimate the possible causality of key clinical variables and consciousness levels on mortality.

2 | METHODS

2.1 | Ethics

The Ethics Board of West China Hospital, Sichuan University (approval 2020[100]) approved the study. The Committed waived the need for informed consent due to the circumstances, and retrospective nature of the study and the confirmation of full anonymization of data.

2.2 | Recruitment

Forty-four hospitals officially designated as COVID-19 treating centres from Wuhan (Hubei Province) and Sichuan Province, China, participated. Consecutive people admitted to these hospitals who met COVID-19 diagnostic criteria to National Guidelines (Trial Version 6)¹³ were enrolled. Briefly, the diagnosis was confirmed by the presence of the typical symptoms and/or characteristic features on chest imaging together with positive testing for SARS-CoV-2 RNA by real-time polymerase chain reaction (PCR).

Enrolment was between 18 January and 20 March 2020 in Sichuan and extended to 30 March in Wuhan. Among them, 223 people discharged before 18 February have been previously reviewed for seizure-related events,¹⁴ and 741 enrolled before 20 March were reviewed for new-onset neurologic events.¹⁵ Recruitment flow is shown in Additional file 1: Figure S1. Those who tested negative and those with insufficient information for the evaluation of consciousness levels were excluded.

2.3 | Clinical data collecting

A standardized clinical report form was designed to extract data from medical records retrospectively (<https://www.wjx.cn/jq/85385510.aspx>). Demographics and related clinical features were collected. According to National Guidelines [12], each participant's clinical condition was classified as mild, moderate, severe or critical. People with symptoms but no signs of pneumonia on imaging were considered 'mild', while those with symptoms and pneumonia signs were classified as 'moderate'. Criteria for a severe condition were respiratory distress with respiration rate (RR) ≥ 30 /min, resting oxygen saturation $\leq 93\%$ and PaO₂/FiO₂ ≤ 300 mmHg. People with respiratory failure, shock or other organ failure requiring intensive care unit (ICU) admission were considered critical. Two neurologists using the Glasgow Coma Scale (GCS) independently estimated consciousness levels when altered consciousness was first mentioned in the medical notes. In cases of inconsistent scores, case notes were reviewed, and a third physician or neurologist settled the scores. For people on ventilators or with language disability, the verbal response was evaluated as '1'.¹⁶ In those sedated, GCS scores were estimated before the introduction of sedatives. Blood oxygen saturation was recorded from the pulse oximeter if no blood gas assay was performed. Blood pH was taken from the blood gas assay. In people with GCS < 15 , oxygen saturation levels and pH were recorded during disturbed consciousness or the lowest recording during admission if a corresponding oxygen level was not available. For those fully conscious throughout the admission, the lowest oxygen saturation was recorded. Outcomes were discharge, death or continued hospitalization, for those we did not have the outcome at the study end. We recorded dates of first symptoms, admission, discharge, death or last entry date if still in the hospital. The date of the first record of impaired consciousness was recorded. Time at respiratory deterioration, defined as when oxygen saturation $< 95\%$ was first noted, was recorded.

2.4 | Grouping and data processing

Participants were categorized into three subgroups according to GCS scores: (1) GCS = 15, fully awake without signs of impairment of consciousness; (2) between 14 and 9, with moderate impairment; and (3) <9, with severe impairment.¹⁷ In people with mild or moderate illness, with no record of respiratory dysfunction and who never had blood gas assay, pH values were taken as 7.40. The original blood pH value was converted into the absolute value of the deviation from normal (7.35–7.45) for further analysis. For those whose pH value fell within this interval, pH was considered as '0' in this conversion.

2.5 | Statistical analysis

Data analysis was performed using STATA 16.0 (StataCorp LLC), MPLUS 8.3 (Muthén & Muthén) and statistical significance was set at $p < .05$. Frequencies and percentages were used to describe the cohort and GCS subgroups. We excluded cases in the corresponding analysis if any variable involved was missing.

Cox proportional hazards regression modelling was used to assess the effect of GCS scores on death risk, adjusting for potential confounders (age, gender, smoking, acute complications, medical history, COVID-19 severity, oxygen saturation level and blood pH). The proportional hazards assumption was tested using Schoenfeld residuals. People with missing survival time were excluded in the Cox regression modelling. The survival time was estimated from the time of symptom onset in all data analysis.

We used structural equation modelling to assess the interrelationships of key variables to death. Age, oxygen saturation level and pH were used as continuous variables. Parameters were estimated using the robust weighted least squares (WLSMV) method and 1,000 bootstrapping procedure was performed to obtain the bias-corrected 95% confidence interval (CI) of the indirect effect. We excluded people with an uncertain outcome (still in hospital at study end) from the equation model.

We analysed the time effect of the disturbance of consciousness in those with altered GCS scores using a Kaplan–Meier survival curve. First, we estimated progression from altered consciousness to death. Participants were divided into three groups according to the time from onset of COVID-19 symptoms to the first evidence of impaired consciousness as: (1) <10 days; (2) between 10 and 19 days and (3) ≥ 20 days. Next, based on the time from the first reduction of blood oxygen saturation to 95% or below to first evidence of altered consciousness, individuals were classified into two groups, ≤ 2 days and >2 days. Results of the log-rank test are presented to compare the survival status between the groups intuitively. Median survival time and hazard ratio were estimated.

3 | RESULTS

We enrolled 1,143 individuals with an overall mortality of 6.6% (76/1143). Additional file 2: Table S1 provides a list of participating hospitals with

inclusion numbers. The average age was 51.26 years (standard deviation of 17.08 years), and 574 were men (50.3%). In Wuhan, 670 people were enrolled, and 73 (10.9%) of them died in hospital. The remaining 473 cases were from Sichuan, with 3 (0.6%) in-hospital deaths reported. The workflow of data analysis is shown in Additional file 1: Figure S1. Eight-four reported disturbance of consciousness during admission, of whom 53 had a GCS score <9. Demographics and GCS subgroups are listed in Additional file 3: Table S2. The most frequent comorbidities recorded were hypertension ($n = 260$), diabetes ($n = 115$) and cardiovascular disease ($n = 90$). Acute complications were listed in Additional file 4: Table S3, and the commonest acute complications were electrolyte disturbance ($n = 161$), hepatic insufficiency ($n = 138$), anaemia ($n = 119$) and type I respiratory failure ($n = 99$). No individual comorbidities or complications were significant in the regression model (data not shown). Thus, they were merged into combined factors referred to as 'Acute complication' and 'Comorbidities' in the following regression analysis. Computed tomography (CT) brain scans were performed in 26 individuals, of whom eight had abnormalities; details have been previously published.⁵

3.1 | Risk factors for mortality during hospitalization

We included 799 participants in the multivariable Cox regression, of whom 54 died (Table 1). The only significant risk factor was the GCS; both groups with GCS < 15 were significantly more at risk of death than the group with GCS 15, ($p < .001$). The hazard ratio was 46.76 for those with GCS between 9 and 14 and 65.86 for those with score <9, compared to those with normal GCS score. The effect of other risk factors, including age, gender, current smoker, acute complications, medical history and the severity of COVID-19, was not significant in the multivariable regression.

3.2 | The pathway analysis among key factors of mortality

To assess the association between impairment of consciousness and death and potential mechanisms, we employed structural equation modelling using four key predictors: age, oxygen saturation level, pH deviation and GCS score. We excluded 144 people still in hospital at study end from this analysis. Based on the 776 participants (Figure 1), the model suggested a significant direct link between GCS score and death. The three other factors each showed significant indirect associations with death through GCS, with no significant direct associations.

3.3 | Time course from altered consciousness to death

We first evaluated time from COVID-19 onset to consciousness impairment. Eighty-four individuals with altered GCS score were

TABLE 1 The risk factors of death in a multivariable Cox regression model (N = 799^a)

Characteristics	Survived (N = 745) n(%)	Died (N = 54) n(%)	HR	95% CI	p
Age(year)					
<65	593 (97.9)	13 (2.1)	1	-	-
≥65	152 (78.8)	41 (21.2)	1.82	(0.790, 4.194)	.160
Gender					
Male	367 (92.2)	31 (7.8)	1	-	-
Female	378 (94.3)	23 (5.7)	1.058	(0.539, 2.076)	.869
Current smoker					
No	618 (92.2)	52 (7.8)	1	-	-
Yes	127 (98.4)	2 (1.6)	0.727	(0.158, 3.348)	.683
Acute complications					
No	419 (99.3)	3 (0.7)	1	-	-
Yes	326 (86.5)	51 (13.5)	1.238	(0.285, 5.367)	.776
Comorbidities					
No	384 (96.0)	16 (4.0)	1	-	-
Yes	361 (90.5)	38 (9.5)	1.683	(0.790, 3.588)	.178
Severity of COVID-19					
Mild	41 (95.3)	2 (4.7)	1	-	-
Moderate	511 (99.8)	1 (0.2)	0.17	(0.011, 2.565)	.201
Severe	168 (93.9)	11 (6.1)	0.83	(0.156, 4.402)	.827
Critical	25 (38.5)	40 (61.5)	0.765	(0.150, 3.896)	.747
Blood oxygen level					
≥95%	541 (98.0)	11 (2.0)	1	-	-
90–94%	159 (97.5)	4 (2.5)	0.657	(0.192, 2.246)	.503
85–89%	22 (75.9)	7 (24.1)	0.787	(0.268, 2.309)	.663
<85%	23 (41.8)	32 (58.2)	2.093	(0.922, 4.749)	.077
PH					
Normal	593 (96.1)	24 (3.9)	1	-	-
Deviation from normal <0.05	101 (93.5)	7 (6.5)	0.819	(0.325, 2.063)	.672
Deviation from normal ≥0.05	51 (68.9)	23 (31.1)	0.88	(0.433, 1.791)	.725
GCS					
15	737 (99.5)	4 (0.5)	1	-	-
14≥GCS ≥9	7 (30.4)	16 (69.6)	46.757	(10.346, 211.299)	<.001
<9	1 (2.9)	34 (97.1)	65.855	(14.109, 307.385)	<.001

Abbreviation: GCS, glasgow coma scale.

^aA further 65 individuals with missing value in survival time were excluded in the analysis.

divided into three groups based on the time span: (1) <10 days: 13 people of whom 12 died by the study end; (2) between 10 and 19 days: 46 people of whom 39 died and (3) ≥20 days: 25 people of whom 19 died; the median (quartile) time interval between the symptom onset to the consciousness impairment was 14 (11, 22) days. Survival was significantly different among groups (log-rank tests: <10 days vs. 10–19 days, $p = .025$; <10 days vs. ≥20 days and

10–19 days vs. ≥20 days, $p < .001$, shown in Figure 2). We then evaluated whether the rapid development of consciousness alteration after the deterioration of oxygen saturation was also a significant predictive factor (shown in Figure 3). Five people who never had a record of an oxygen saturation <95% were excluded, the remaining 79 people were divided into two groups (1) ≤2 days: 44 people in which 38 died; (2) >2 days: 35 in which 29 died. Survival time was

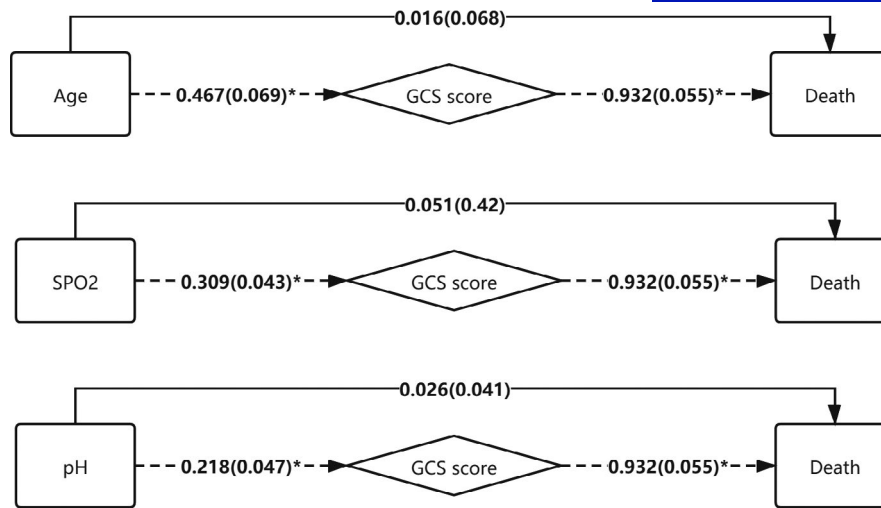
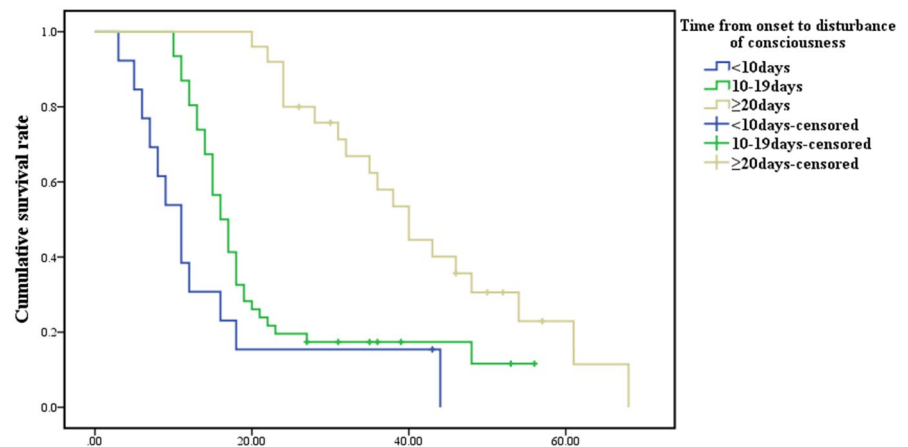


FIGURE 1 Pathway analysis model among GCS scores, SpO₂ and pH deviation. GCS: Glasgow Coma Scale. * $p < .05$. All four key variables were used in the structural equation modelling, and the presentation has been simplified to highlight the direct and indirect pathways to death among two variables. Solid lines represent direct associations, while the dotted lines represent indirect pathways. Numbers showed are standardized coefficients (standard error) for each structural equation modelling. For direct pathway, the t values are the result of the standardized coefficients divided by the standard error. The p values of the associations reach the significance level of .05 when t is greater than 1.96 (or less than -1.96). Positive and negative values of the indirect coefficients show the direction of association. For indirect pathways (mediating pathways), the coefficients were the product of the coefficients of the direct pathway. The coefficients and confidence intervals of these three mediating pathways were as follows: age → GCS → Death, 0.435 (95% CI 0.296, 0.593); SpO₂ → GCS → Death, -0.288 (95% CI -0.379, -0.211); and pH → GCS → Death, 0.203 (95% CI 0.125, 0.297)

FIGURE 2 Kaplan–Meier survival Curve among individuals who had altered consciousness with different speeds of progression during the illness course



significantly different between those who developed consciousness alteration within and beyond 2 days after the deterioration of oxygen saturation ($p = .028$). The median survival time and HR of the groups in the time course analysis are provided in Table 2 with significant differences in all comparisons.

4 | DISCUSSION

We assessed levels of consciousness and their association with fatality risk. GCS scores were the only factor associated with death in the Cox regression model. The structural equation modelling confirmed this. Other critical factors such as age, oxygen saturation level and pH were indirectly associated with death but mediated by GCS

scores. Survival analysis suggested that early impairment of consciousness during the course or after hypoxaemia led to a shorter survival time and higher mortality.

The COVID-19 mortality rate varies depending on location and populations assessed.^{18,19} COVID-19 may occur in healthy individuals of any age, and most will have a mild condition. Several reports have provided various risk factors for COVID-19-related death, including older age, smoking, male sex, comorbidities and elevated d-dimer.^{12,20,21} Current evidence of the impact of altered consciousness on mortality is scarce. One study suggested unconsciousness is an independent predictive factor of developing critical illness.¹⁰

Assessing the association between consciousness and mortality is challenging, as consciousness is a dynamic process with many potential confounders. We designed a retrospective assessment and

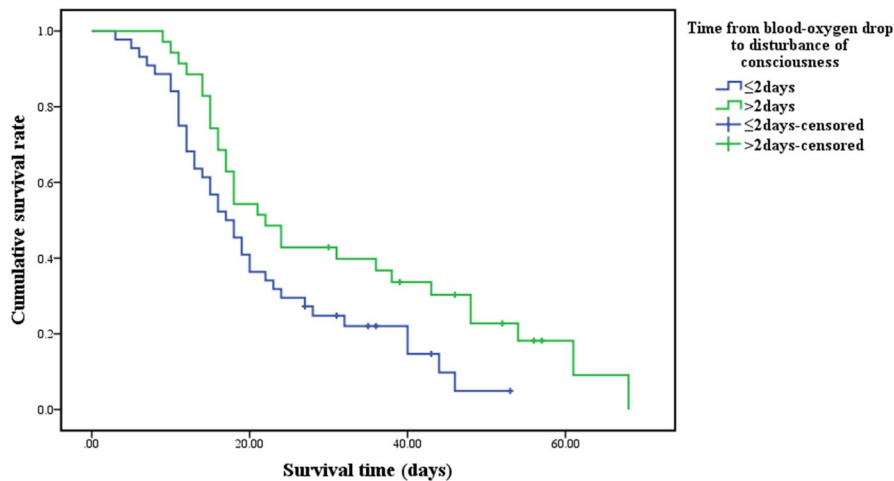


FIGURE 3 Kaplan–Meier survival Curve among individuals who had blood oxygen saturation deterioration with different speeds of progression during the illness course

systematically reviewed our cohort. We focussed on timing, oxygen saturation and pH when impairment of consciousness was first noticed. We also applied structural equation modelling, a robust technique to assess complex, dynamic and multivariable relationships, after the traditional regression model to confirm and explore its result. In structural equation modelling, multi-equations are formulated, and variables do not have a clear dependent and independent distinction compared to regression modelling. A dependent variable in one model might be an independent variable in another equation.²² This enables the method, to some extent, to infer causal relationships.²³ It has been widely used to analyse complex associations in different areas, including medicine, particularly to explore aetiology and identify best treatments.^{24,25}

Our findings suggest that COVID-19 deaths are mainly associated with lower GCS scores. In the structural equation modelling, other factors such as age, oxygen saturation and pH played an indirect role mediated by a lower GCS score. Death in COVID-19 seems likely mediated by the decreased consciousness and indirectly associated with age, oxygen saturation and pH value. Time to event analysis suggested a rapid development of consciousness disorders either from COVID-19 onset, or the deterioration of oxygen saturation had a significant impact on the median survival time. It also indicated that death was likely a consequence of decreased blood oxygen level mediated by a lower GCS score.

Conversely, low tolerance to hypoxia could also lead to a shorter expectation of survival time. Further work is warranted to identify the causes of impaired consciousness and efficacious, cost-efficient treatment. One explanation of rapid hypoxia is a cytokine storm thought to play an essential role in developing critical illness or death. It is characterized by the onset of overwhelming systemic inflammation, hyperferritinaemia, haemodynamic instability and multi-organ failure. The increased production of pro-inflammatory cytokines could also lead to acute respiratory distress syndrome.²⁶

Several studies have shown that disorders of consciousness occur commonly in older people with severe conditions.^{6,15,27} The causes of altered consciousness in people with COVID-19 have not yet been fully understood. They are, however, likely linked to hypoxaemia or brain viraemia,¹⁵ which may cause a toxic encephalopathy,

and some post-mortem studies have supported this.²⁸ Central respiratory failure caused by brainstem insults has been challenged by negative post-mortem brainstem findings.²⁹ This is also in agreement with our findings that poor outcomes were indirectly associated with lower oxygen levels and altered blood pH, mediated by consciousness impairment. A few case reports of electroencephalogram findings in unconscious people suggested a pattern compatible with either a direct viral insult to the brain or demyelination and inflammatory lesions secondary to cytokine storm as a post-viral autoimmune process.^{30,31} Cases with encephalitis with or without SARS-CoV2 identified in cerebrospinal fluid have been reported,^{7,32} but evidence of a direct insult to the brain is still lacking.³³ Decreased consciousness levels have also been reported in people with large hemispheric infarction and reversible encephalopathy syndrome, suggesting brain endothelial dysfunction.^{34,35} Understanding the different causes of disturbed consciousness is crucial as it may lead to a specific treatment. During the early outbreak, with health systems under significant challenges, a higher proportion of people becoming unconscious and deaths was noted in Hubei than in other parts of China.³⁶ This is consistent with our findings that altered consciousness is the 'red flag' for death which should be noted and trigger early intervention. Establishing consciousness levels requires dynamic re-evaluation, to avoid missing early signs of deterioration.

SARS-CoV-2 seems to be associated with more consciousness impairment than other coronaviruses. One report concerning the Middle East respiratory syndrome CoV (MERS-CoV) identified a much higher proportion of people with confusion than in our cohort.³⁷ Different design and population may account for the divergent results between our study and others.

Our study has limitations: Firstly, we only included individuals with enough information, but the retrospective nature decreases the power of evidence by the inevitability of missing data. For example, not all people with neurological impairment performed CT scans. New methods should also be used to fill missing components, such as when scoring the verbal response in ventilated individuals.³⁸ Secondly, some individuals were still in-hospital at the study end, which might influence the results. Thirdly, we cannot infer definite causality, regardless of how well the regression model's association

TABLE 2 Difference in median survival time in different time groups

Time span	Median survival time (days)	95% CI of median survival time (days)	HR ^a	95% CI of HR	p
Days from symptoms onset to disturbance of consciousness	<10 days	(7.6, 14.4)	10.685	(4.4, 26.0)	<.001
	10–19 days	(14.1, 17.9)	4.106	(2.2, 7.7)	<.001
	≥20 days	(33.9, 46.1)	1	-	-
Days from deterioration of blood oxygen level to disturbance of consciousness	≤2 days	(13.3, 20.7)	1.825	(1.1, 3.1)	.026
	>2 days	(16.2, 27.8)	1	-	-

Abbreviations: CI, confidence interval; HR, hazard ratio.

^aAge, gender and the severity of COVID-19 were adjusted.

and the structural equation model explained the data. Fourthly, GCS is not sensitive in detecting altered mental states such as delirium or psychosis; we tried to minimize the uncertainty by using categorical instead of continuous data. GCS scores were assessed independently by at least two neurologists with contradictory scores resolved by a third senior reviewer.

5 | CONCLUSION

Despite these limitations, our findings suggested a direct link between consciousness impairment and death in COVID-19. Future work assessing consciousness level and correlation with illness severity and death in larger cohorts are needed, along with optimal assessment tools and treatment to decrease COVID-19 mortality.

6 | CONSENT FOR PUBLICATION

Not applicable.

ETHICAL APPROVAL AND CONSENT TO PARTICIPATE

The Ethics Board of West China Hospital, Sichuan University (approval 2020[100]) approved the study. The Committed waived the need for informed consent due to the circumstances, and retrospective nature of the study and the confirmation of full anonymization of data.

ACKNOWLEDGEMENTS

We thank all the people with COVID-19 who participated in the study. We are also grateful to the Sichuan Health Commission for data access and all hospital staff and participants. We thank Dr. Hesheng Zhang, Dr. Linyuan Qin, Dr. Jian Guo, Dr. Dan Liu, Dr. Nian Li, Dr. Hui Gao, Dr. Yingying Zhang, Dr. Mintao Lin, Dr. Sisi Shen, Dr. Lei Chen, Dr. Fengming Luo and Dr. Gang Wang for their assistance in collecting and managing data. We are thankful to Dr G.S. Bell for critically reviewing a previous version of the manuscript.

JWS is based at NIHR University College London Hospitals Biomedical Research Centre, which receives a proportion of funding from the UK Department of Health's Research Centres funding scheme. He receives research support from the Marvin Weil Epilepsy Research Fund, the UK Epilepsy Society, and the Christelijke Vereniging voor de Verpleging van Lijders aan Epilepsie, Netherlands.

CONFLICT OF INTEREST

None concerning this work.

AUTHORS CONTRIBUTIONS

WX, LL, JM, CZ and DZ designed the study protocol and the questionnaire. WX, LL and BZ conceived of the analysis. WX, LL and BZ conducted the analysis and prepared the manuscript's first draft

with feedback from all other authors. JL, ML and LH were involved in collecting and managing data. JWS revised the manuscript and provided critical intellectual input. All authors read and approved the final manuscript.

DATA AVAILABILITY STATEMENT

Anonymized data will be shared by reasonable requests from any qualified investigator to the corresponding author.

ORCID

Weixi Xiong  <https://orcid.org/0000-0001-6835-8664>

Li He  <https://orcid.org/0000-0002-2034-1027>

Josemir W. Sander  <https://orcid.org/0000-0001-6041-9661>

Dong Zhou  <https://orcid.org/0000-0001-7101-4125>

REFERENCES

- Zhu N, Zhang D, Wang W, et al. A novel coronavirus from patients with pneumonia in China, 2019. *N Engl J Med*. 2020;382(8):727-733.
- University JH. Coronavirus COVID-19 global cases by the Center for Systems Science And Engineering (CSSE). Johns Hopkins University (JHU). 2020. <https://coronavirus.jhu.edu/map.html>. Accessed 28 November, 2020.
- Chen N, Zhou M, Dong X, et al. Epidemiological and clinical characteristics of 99 cases of 2019 novel coronavirus pneumonia in Wuhan, China: a descriptive study. *Lancet*. 2020;395(10223):507-513.
- Mao L, Jin H, Wang M, et al. Neurologic manifestations of hospitalised patients with coronavirus disease 2019 in Wuhan, China. *JAMA Neurol*. 2020;77(6):683-690.
- Xiong W, Mu J, Guo J, et al. New onset neurologic events in people with COVID-19 in 3 regions in China. *Neurology*. 2020;95(11):e1479-e1487.
- Romero-Sanchez CM, Diaz-Maroto I, Fernandez-Diaz E, et al. Neurologic manifestations in hospitalised patients with COVID-19: the ALBACOVID registry. *Neurology*. 2020;95(8):e1060-e1070.
- Varatharaj A, Thomas N, Ellul MA, et al. Neurological and neuropsychiatric complications of COVID-19 in 153 patients: a UK-wide surveillance study. *Lancet Psychiatry*. 2020;7(10):875-882.
- Paterson RW, Brown RL, Benjamin L, et al. The emerging spectrum of COVID-19 neurology: clinical, radiological and laboratory findings. *Brain*. 2020;143(10):3104-3120.
- Whittaker A, Anson M, Harky A. Neurological manifestations of COVID-19: a systematic review and current update. *Acta Neurol Scand*. 2020;142(1):14-22.
- Liang W, Liang H, Ou L, et al. Development and validation of a clinical risk score to predict the occurrence of critical illness in hospitalised patients with COVID-19. *JAMA Intern Med*. 2020;180(8):1081-1089.
- Grasselli G, Greco M, Zanella A, et al. Risk factors associated with mortality among patients with COVID-19 in intensive care units in Lombardy, Italy. *JAMA Intern Med*. 2020;180(10):1345-1355.
- Williamson EJ, Walker AJ, Bhaskaran K, et al. Factors associated with COVID-19-related death using OpenSAFELY. *Nature*. 2020;584(7821):430-436.
- National Health Commission of the People's Republic of China. Diagnosis and Treatment Protocol for COVID-19 (Trial Version. 6) 2020; <http://www.nhc.gov.cn/yzygj/s7653p/202002/8334a8326dd94d329df351d7da8aefc2/files/b218cfeb1bc54639af227f922bf6b817.pdf>. Accessed 29 March 2020.
- Lu L, Xiong W, Liu D, et al. New-onset acute symptomatic seizure and risk factors in corona virus disease 2019: a retrospective multicenter study. *Epilepsia*. 2020;61(6):e49-e53.
- Xiong W, Mu J, Guo J, et al. New onset neurologic events in people with COVID-19 infection in three regions in China. *Neurology*. 2020;95(11):e1479-e1487.
- Cheng K, Bassil R, Carandang R, Hall W, Muehlschlegel S. The estimated verbal GCS subscore in intubated traumatic brain injury patients: is it really better? *J Neurotrauma*. 2017;34(8):1603-1609.
- Mehta R, Chinthapalli K. Glasgow coma scale explained. *BMJ*. 2019;365:l296.
- Verity R, Okell LC, Dorigatti I, et al. Estimates of the severity of coronavirus disease 2019: a model-based analysis. *Lancet Infect Dis*. 2020;20(6):669-677.
- Onder G, Rezza G, Brusaferro S. Case-fatality rate and characteristics of patients dying in relation to COVID-19 in Italy. *JAMA*. 2020;323(18):1775-1776.
- Zhou F, Yu T, Du R, et al. Clinical course and risk factors for mortality of adult inpatients with COVID-19 in Wuhan, China: a retrospective cohort study. *Lancet*. 2020;395(10229):1054-1062.
- Zheng Z, Peng F, Xu B, et al. Risk factors of critical & mortal COVID-19 cases: a systematic literature review and meta-analysis. *J Infect*. 2020;81(2):e16-e25.
- Gunzler D, Chen T, Wu P, Zhang H. Introduction to mediation analysis with structural equation modeling. *Shanghai Arch Psychiatry*. 2013;25(6):390-394.
- Wright S. The method of path coefficients. *Ann Math Statist*. 1934;5(3):161-215.
- de la Fuente J, Garcia-Torrecillas JM, Solinas G, Iglesias-Espinosa MM, Garzon-Umerenkova A, Fiz-Perez J. Structural equation model (SEM) of stroke mortality in Spanish inpatient hospital settings: the role of individual and contextual factors. *Front Neurol*. 2019;10:498.
- Christ SL, Lee DJ, Lam BL, Zheng DD, Arheart KL. Assessment of the effect of visual impairment on mortality through multiple health pathways: structural equation modeling. *Invest Ophthalmol Vis Sci*. 2008;49(8):3318-3323.
- Ragab D, Salah Eldin H, Taeimah M, Khattab R, Salem R. The COVID-19 cytokine storm; what we know so far. *Front Immunol*. 2020;11:1446.
- Helms J, Kremer S, Merdji H, et al. Neurologic features in severe SARS-CoV-2 infection. *N Engl J Med*. 2020;382(23):2268-2270.
- Coolen T, Lolli V, Sadeghi N, et al. Early post-mortem brain MRI findings in COVID-19 non-survivors. *Neurology*. 2020;95(14):e2016-e2027. <https://doi.org/10.1212/WNL.0000000000101116>
- Solomon IH, Normandin E, Bhattacharyya S, et al. Neuropathological features of Covid-19. *N Engl J Med*. 2020;383(10):989-992.
- Vellieux G, Rouvel-Talleg A, Jaquet P, Grinea A, Sonnevile R, d'Ortho M-P. COVID-19 associated encephalopathy: Is there a specific EEG pattern? *Clin Neurophysiol*. 2020;131(8):1928-1930.
- Somani S, Pati S, Gaston T, Chitlangia A, Agnihotri S. De novo status epilepticus in patients with COVID-19. *Ann Clin Transl Neurol*. 2020;7(7):1240-1244. <https://doi.org/10.1002/acn3.51071>
- Moriguchi T, Harii N, Goto J, et al. A first case of meningitis/encephalitis associated with SARS-Coronavirus-2. *Int J Infect Dis*. 2020;94:55-58.
- Ellul M, Varatharaj A, Nicholson TR, et al. Defining causality in COVID-19 and neurological disorders. *J Neurol Neurosurg Psychiatry*. 2020;91(8):811-812.
- Princiotta Cariddi L, Tabae Damavandi P, Carimati F, et al. Reversible encephalopathy syndrome (PRES) in a COVID-19 patient. *J Neurol*. 2020;267(11):3157-3160.
- Pittams A, Axiaq A, Qamar A, Botezatu B, Harky A. The correlation between stroke and coronavirus disease (COVID-19): where is the evidence? *Eur Med J*. 2020.
- Liang W-H, Guan W-J, Li C-C, et al. Clinical characteristics and outcomes of hospitalised patients with COVID-19 treated in Hubei (epicentre) and outside Hubei (non-epicentre): a nationwide analysis of China. *Eur Respir J*. 2020;55(6):2000562.

37. Saad M, Omrani AS, Baig K, et al. Clinical aspects and outcomes of 70 patients with Middle East respiratory syndrome coronavirus infection: a single-center experience in Saudi Arabia. *Int J Infect Dis.* 2014;29:301-306.
38. Brennan PM, Murray GD, Teasdale GM. A practical method for dealing with missing Glasgow Coma Scale verbal component scores. *J Neurosurg.* 2020;1-6.

How to cite this article: Xiong W, Lu L, Zhang B, et al. Association of consciousness impairment and mortality in people with COVID-19. *Acta Neurol Scand.* 2021;144:251-259. <https://doi.org/10.1111/ane.13471>

SUPPORTING INFORMATION

Additional supporting information may be found online in the Supporting Information section.