

ER- α 36, a Novel Variant of ER- α , Mediates Estrogen-Stimulated Proliferation of Endometrial Carcinoma Cells via the PKC δ /ERK Pathway

Jing-Shan Tong^{1,2}, Qing-Hua Zhang², Zhen-Bo Wang², Sen Li², Cai-Rong Yang², Xue-Qi Fu¹, Yi Hou², Zhao-Yi Wang³, Jun Sheng^{1,4*}, Qing-Yuan Sun^{2*}

1 College of Life Sciences, Jilin University, Changchun, China, **2** State Key Laboratory of Reproductive Biology, Institute of Zoology, Chinese Academy of Sciences, Beijing, China, **3** Department of Medical Microbiology and Immunology, Creighton University Medical School, Omaha, Nebraska, United States of America, **4** Yunnan Agricultural University, Kunming, China

Abstract

Background: Recently, a variant of ER- α , ER- α 36 was identified and cloned. ER- α 36 lacks intrinsic transcription activity and mainly mediates non-genomic estrogen signaling. The purpose of this study was to investigate the function and the underlying mechanisms of ER- α 36 in growth regulation of endometrial Ishikawa cancer cells.

Methods: The cellular localization of ER- α 36 and ER- α 66 were determined by immunofluorescence in the Ishikawa cells. Ishikawa endometrial cancer control cells transfected with an empty expression vector, Ishikawa cells with shRNA knockdown of ER- α 36 (Ishikawa/RNAiER36) and Ishikawa cells with shRNA knockdown of ER- α 66 (Ishikawa/RNAiER66) were treated with E2 and E2-conjugated to bovine serum albumin (E2-BSA, membrane impermeable) in the absence and presence of different kinase inhibitors HBDDE, bisindolylmaleimide, rottlerin, H89 and U0126. The phosphorylation levels of signaling molecules and cyclin D1/cdk4 expression were examined with Western blot analysis and cell growth was monitored with the MTT assay.

Results: Immunofluorescence staining of Ishikawa cells demonstrated that ER- α 36 was expressed mainly on the plasma membrane and in the cytoplasm, while ER- α 66 was predominantly localized in the cell nucleus. Both E2 and E2-BSA rapidly activated PKC δ not PKC α in Ishikawa cells, which could be abrogated by ER- α 36 shRNA expression. E2- and E2-BSA-induced ERK phosphorylation required ER- α 36 and PKC δ . However, only E2 was able to induce Camp-dependent protein kinase A (PKA) phosphorylation. Furthermore, E2 enhances cyclin D1/cdk4 expression via ER- α 36.

Conclusion: E2 activates the PKC δ /ERK pathway and enhances cyclin D1/cdk4 expression via the membrane-initiated signaling pathways mediated by ER- α 36, suggesting a possible involvement of ER- α 36 in E2-dependent growth-promoting effects in endometrial cancer cells.

Citation: Tong J-S, Zhang Q-H, Wang Z-B, Li S, Yang C-R, et al. (2010) ER- α 36, a Novel Variant of ER- α , Mediates Estrogen-Stimulated Proliferation of Endometrial Carcinoma Cells via the PKC δ /ERK Pathway. PLoS ONE 5(11): e15408. doi:10.1371/journal.pone.0015408

Editor: Syed A. Aziz, Health Canada, Canada

Received: August 17, 2010; **Accepted:** September 9, 2010; **Published:** November 4, 2010

Copyright: © 2010 Tong et al. This is an open-access article distributed under the terms of the Creative Commons Attribution License, which permits unrestricted use, distribution, and reproduction in any medium, provided the original author and source are credited.

Funding: This work was supported by Major State Basic Research Program of China to QYS and also supported by National Institute of Health Grant, DK84328 and the Nebraska Tobacco Settlement Biomedical Research Program LB595 to ZYW. The funders had no role in study design, data collection and analysis, decision to publish, or preparation of the manuscript.

Competing Interests: The authors have declared that no competing interests exist.

* E-mail: shengj63@126.com (JS); sunqy@ioz.ac.cn (Q-Y)

Introduction

Endometrial cancer is one of the most common female pelvic malignancies and is the fourth most common type of cancer in North American and European women [1,2]. It is well-known that the steroid hormone 17 β -estradiol (E2) plays an important role in the development of endometrial carcinoma [3,4]. In the classical model, E2 regulates the expression of estrogen responsive genes by binding to the estrogen receptor- α (ER) located in the cell cytoplasm, and ligand-bound receptors then migrate to the nucleus and regulate the transcription of target genes via binding to the estrogen responsive elements (EREs) within the target gene promoter [5,6]. However, accumulating evidence indicated that ER- α also exists on the plasma membrane and participates in

rapid estrogen signaling or membrane-initiated estrogen signaling. It has been reported that ER- α is modified by posttranslational palmitoylation in the ligand-binding domain that may contribute to its membrane localization [7]. Previously, we identified and cloned a variant of ER- α with a molecular weight of 36 kDa that is transcribed from previously unidentified promoter located in the first intron of the original 66 kDa ER- α (ER- α 66) gene [8]. ER- α 36 lacks both transcriptional activation domains of ER- α 66 (AF-1 and AF-2), but it retains the DNA-binding domain and partial ligand-binding domain. It possesses a unique 27 amino acid domain that replaces the last 138 amino acids encoded by exons 7 and 8 of the ER- α 66 gene.

PKC isoforms are involved in a variety of cellular functions, including growth, differentiation, tumor promotion, aging, and

apoptosis [9,10,11]. The PKC family consists of several subfamilies; depending on differences in their structure and substrate requirements 1) classical (α , β I, β II and γ), all of which are activated by calcium and diacylglycerol (DAG); 2) novel (δ , ϵ , η and θ), all of which require DAG but are calcium-insensitive; 3) atypical (ζ and λ /I), which are not responsive to either DAG or calcium [9,12,13]. It has been reported that E2 rapidly increases PKC activity via a membrane pathway not involving both ER- α or ER- β [14]. Our previous report demonstrated that 17 β -estradiol induced the activation the MAPK/ERK pathway and stimulated the cells proliferation through the membrane-based ER- α 36 [15]. We thus hypothesized that ER- α 36 may be also involved in the E2-induced PKC activation.

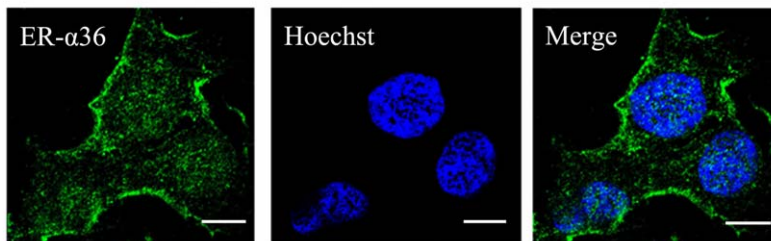
In the present study, we studied the ER- α 36 function in endometrial cancer cells and found that ER- α 36 mediates E2 induced the membrane-associated PKC δ and the MAPK/ERK pathways leading to modulation of growth and survival of endometrial carcinoma cells.

Results

Differential expression of ER- α 36 and ER- α 66 in Ishikawa cells

ER- α 36 is a variant of ER- α generated by alternative promoter usage and alternative splicing [8]. To examine ER- α 36 localization in Ishikawa cells, the indirect immunofluorescence assay was performed with anti-ER- α 36 specific antibody raised against the 20 amino acids at the C-terminal of ER- α 36 that are unique to ER- α 36 [15]. Immunofluorescent staining revealed that ER- α 36 was expressed on the plasma membrane and in the cytoplasm of Ishikawa cells (Fig. 1A) while ER- α 66 was predominantly localized in the cell nucleus (Fig. 1B).

A



B

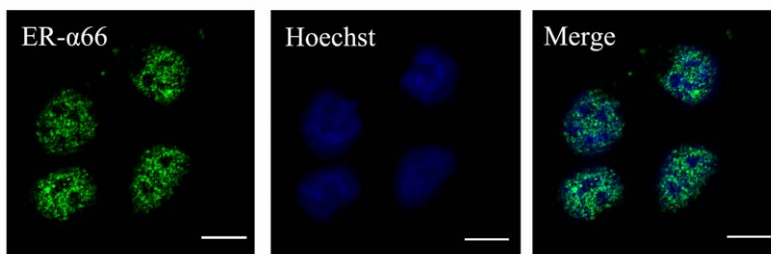


Figure 1. Subcellular localization of ER- α 36 and ER- α 66 in Ishikawa cells. A. Ishikawa cells cultured on coverslips were fixed and immunofluorescently stained with the anti-ER- α 36 specific antibody (green). The cells were also stained with Hoechst 33258 (blue) to show the cell nuclei. B. ER- α 66 expression detected by immunofluorescence in Ishikawa cells. The nucleus was stained by Hoechst 33258. Bar, 10 micrometers. doi:10.1371/journal.pone.0015408.g001

E2 and E2-BSA rapidly induces the activation of PKC δ in Ishikawa cells

We first examined PKC activation by E2 and E2-BSA in Ishikawa cells. Cells treated with E2 (Fig. 2A) showed a rapidly response in the phosphorylation of PKC δ within 5 min of exposure, while the total PKC δ amount was without any change, indicating that E2 induced PKC δ phosphorylation. The membrane impermeable E2-BSA (Fig. 2B) also elicited a similarly rapidly phosphorylation of PKC δ , which then declined gradually in approximately 60 min. These results demonstrated that both E2 and E2-BSA were able to rapidly activate PKC δ in Ishikawa cells. Similar time course studies were performed for E2-induced phosphorylation of PKC α in the Ishikawa cells (Fig. 2C). The concentration-response studies for the PKC α revealed that the E2 could not induce changes of PKC α phosphorylation even at 1 μ M (Fig. 2D).

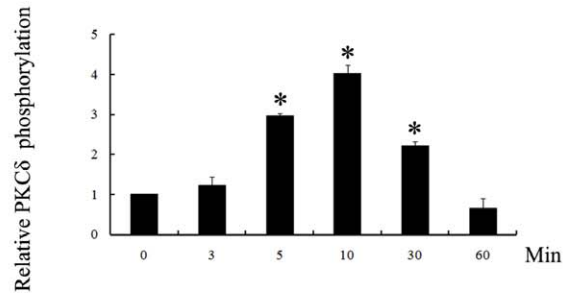
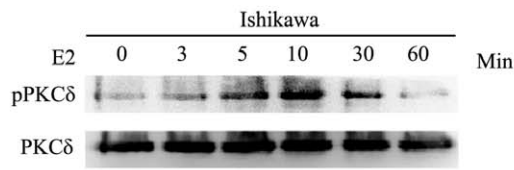
E2, but not E2-BSA, induces PKA activation in Ishikawa cells

We then examine whether E2 and E2-BSA stimulate cAMP-dependent protein kinase (PKA) activation in Ishikawa cells. As shown in Fig. 2E, E2 treatment resulted in rapidly increase of phosphorylation level of PKA within 3 min, and treatment of the cells with Forkolin (20 μ M) for 15 min (F) also induced PKA phosphorylation. However, when cells were treated with E2-BSA (Fig. 2F), no significant change in the phosphorylation of PKA was observed, indicating that E2 induces PKA signaling not from the plasma membrane.

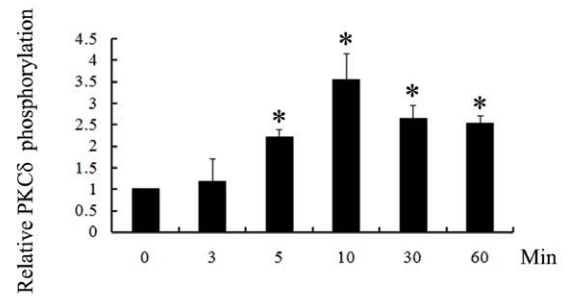
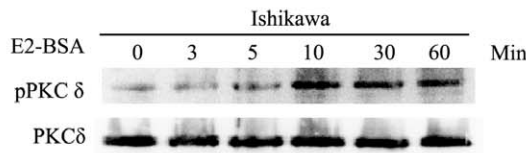
ER- α 36 but not ER- α 66 mediates E2-BSA-stimulated PKC δ activation

To determine the involvement of ER- α 36 in E2 activity observed in Ishikawa cells, we decided to knockdown ER- α 36

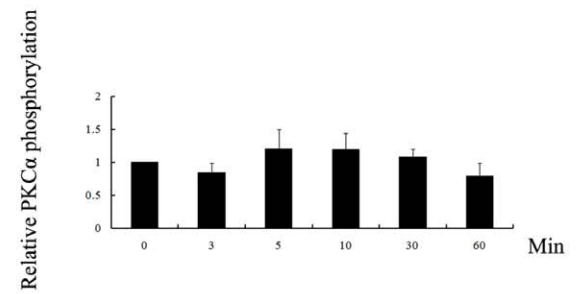
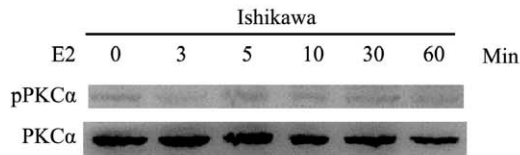
A



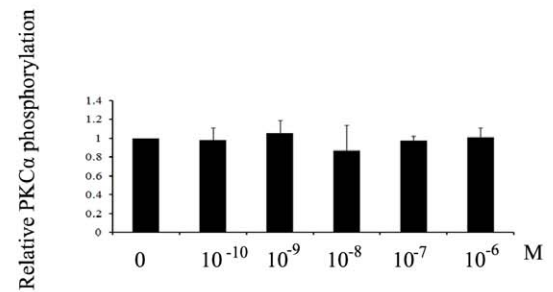
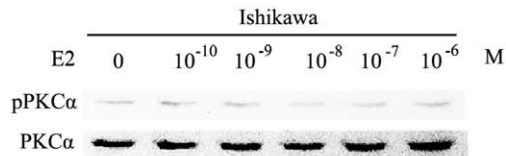
B



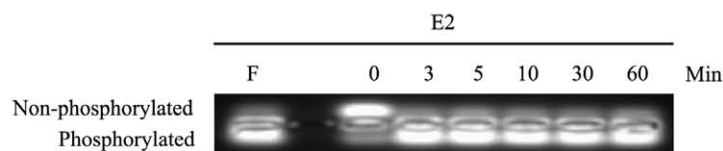
C



D



E



F

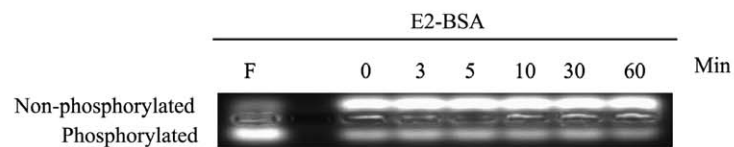


Figure 2. Effects of E2 and E2-BSA on the activation of PKC δ , PKC α and PKA in Ishikawa cells. A and B. Serum starved Ishikawa cell was treated with 10 nM E2 or 10 nM E2-BSA for the indicated time points. Protein extracts were prepared and used for Western blot analysis to measure levels of PKC δ phosphorylation. Protein levels of total PKC δ were also examined as controls. Each bar represents mean value \pm SEM (n=3). *, P<0.05 compared to untreated cells. C. Serum starved Ishikawa cell was treated with 10 nM E2 for the indicated time points and cells were lysed for western blot analysis to measure levels of PKC α phosphorylation. Protein levels of total PKC α were measured as controls. D, Serum starved Ishikawa cell was treated with 0, 0.1, 1, 10, 100 and 1,000 nM E2 for 20 min. Protein extract was prepared for Western blot analysis to measure levels of PKC α phosphorylation and total PKC α . E and F, Serum starved Ishikawa cells were treated with 10 nM E2 or 10 nM E2-BSA for indicated time points, 20 μ M Forskolin (F) was added for 15 min as a positive control, after which the cells were lysed and tested in the PepTag PKA assay. Samples were separated on an agarose gel. The lower band represents phosphorylated peptide, and the upper band represents the remaining unphosphorylated peptide. doi:10.1371/journal.pone.0015408.g002

expression with the shRNA approach. We established a stable cell line that expresses shRNA specifically against the unique 3'UTR of ER- α 36 (Ishikawa/RNAiER36), and found that ER- α 36 expression was dramatically down-regulated in the cells (Figs. 3A & 3B). As shown in Fig. 3C, E2 and E2-BSA failed to induce PKC δ phosphorylation in Ishikawa/RNAiER36 cells. Next, we knockdown ER- α 66 expression with shRNA in Ishikawa cells (Figs. 3D & 3E). Both E2 and E2-BSA induced phosphorylation of PKC δ in the Ishikawa cells with ER- α 66 expression knocked-down with shRNA (Fig. 3F).

To confirm the results, we used endometrial cancer Hec1A cells, which have been reported as an ER- α 66 negative cell line [16], and Hec1A/RNAiER36, which have been described in our previous report [17]. The knockdown of ER- α 36 expression was able to abrogate both E2 and E2-BSA induced (Fig. 3G) in Hec1A cells, indicating the involvement of ER- α 36 in E2 induced-PKC δ phosphorylation. Thus, our data strongly demonstrate that ER- α 36 not ER- α 66 is involved in E2-induced PKC δ activation in endometrial cancer cells.

E2 activates ERK1/2 through the PKC δ signaling pathway

Our previous data demonstrated that 17 β -estradiol also induced the activation of the MAPK/ERK and stimulate the cells proliferation through the membrane-based ER- α 36 [15]. Here we tested whether ER- α 36 also mediates E2-BSA induced ERK1/2 activation in Ishikawa cells. As shown in Fig. 4A, E2-BSA treatment induced the rapid phosphorylation of ERK1/2 in Ishikawa cells while Ishikawa cells with ER- α 36 expression knocked down with the shRNA failed to respond to either E2 or E2-BSA indicating the involvement of ER- α 36 in estrogen stimulated ERK1/2 activation (Fig. 4B). We then investigated whether E2-induced activation of ERK1/2 in Ishikawa cells requires activation of PKC or PKA. Ishikawa cells were treated with E2 in the presence or absence of the nonspecific PKC inhibitor bisindolylmaleimide (Bis), a PKC δ specific inhibitor rottlerin (Rot), a PKC α specific inhibitor HBDDE. Treatment of Bis and rottlerin strongly inhibited E2-induced ERK1/2 activation, indicating the involvement of PKC δ in E2-induced ERK1/2 activation (Fig. 4C). However, both HBDDE and H89 (Fig. 4D) had no effect on E2-induced ERK1/2 activation. Our results thus indicated that the ER- α 36-mediated activation of PKC δ is required for activation of the ERK1/2 pathway.

ER- α 36 is involved in regulation of cyclin D1 protein expression in Ishikawa cells

Cyclin D1 together with its binding partners cyclin dependent kinase 4 and 6 (cdk4 and cdk6) forms activation complexes that promote cell cycle progression and can function as a transcription coregulator. Overexpression of cyclin D1 is involved in endometrial carcinogenesis [18]. The E2-induced proliferation was associated with the up-regulation of cyclin D1 [19,20,21]. We measured the expression levels of cyclin D1 and cdk4 in Ishikawa cells treated with E2. As shown in Fig. 5A, treatment with E2

induced cyclin D1 and cdk4 expression in Ishikawa/V cells but not in Ishikawa/RNAiER36 cells, which could be effectively abrogated by the PKC δ inhibitor rottlerin and MEK inhibitor U0126 (Fig. 5B). Taken together, these results indicate that ER- α 36 mediates E2-induced activation of the PKC δ /ERK pathway and cyclin D1 expression.

Cell proliferation

To further investigate the role of ER- α 36-mediated estrogen signaling in cell proliferation of endometrial cancer cells, Ishikawa/V and Ishikawa/RNAiER36 cells were treated with E2-BSA and cell growth was measured by the MTT assay. MTT assay shown that E2-BSA stimulated growth of Ishikawa/V cells while had no effect on growth of Ishikawa/RNAiER36 cells (Figs. 6A & B). Bisindolylmaleimide (a general PKC inhibitor), rottlerin (a PKC δ specific inhibitor) or U0126 (a MEK specific inhibitor) were able to inhibit E2-BSA-induced cell proliferation. However, HBDDE (a PKC α specific inhibitor) and H89 (a PKA specific inhibitor) failed to inhibit E2-BSA-induced cell proliferation. These results again suggest that E2-BSA-induced cell proliferation is predominantly mediated through the ER- α 36/PKC δ /ERK pathway in endometrial cancer cells.

Discussion

Estrogen receptors are members of the nuclear receptor superfamily and function as ligand-dependent transcription factors in the nucleus to mediate estrogen signaling. However, accumulating evidence indicated the existence of rapid signaling responses to E2 that are independent of transcriptional effects [22,23]. Previously, a novel variant of ER- α , ER- α 36, was identified, cloned and characterized [8]. ER- α 36 is expressed in established ER-positive and ER-negative breast cancer cells and specimens from breast cancer patients that lacks expression of ER- α 66 [24], suggesting that ER- α 36 expression is regulated differently from ER- α 66. In this study, confocal microscopy results show that ER- α 36 is expressed on the plasma membrane and in the cytoplasm of Ishikawa cells. In contrast, ER- α 66 is predominantly localized in the cell nucleus.

Previous studies have shown that ER- α 36 mediates membrane-initiated effects of estrogen signaling by activation of the mitogen activated protein kinase (MAPK) signaling pathway, and stimulates cell growth [15]. ER- α 36 also mediates activation of the MAPK/ERK signaling induced by antiestrogens, such as tamoxifen and ICI 182,780 [15,25]. In addition, ER- α 36 mediates membrane-initiated testosterone signaling by activation of the ERK and AKT signaling pathway [17]. Recently, investigators have recognized rapid non-genomic effects of estrogen on several cellular processes, such as activation of PKC, PKA, calcium channel, and AKT to stimulate physiological effects [26,27,28], but the mechanisms are not well understood and have not been extensively studied [29,30,31]. PKC family consists of a number of serine-threonine kinases that are divided into three groups based on their activating factors. PKC activators act as tumor promoters.

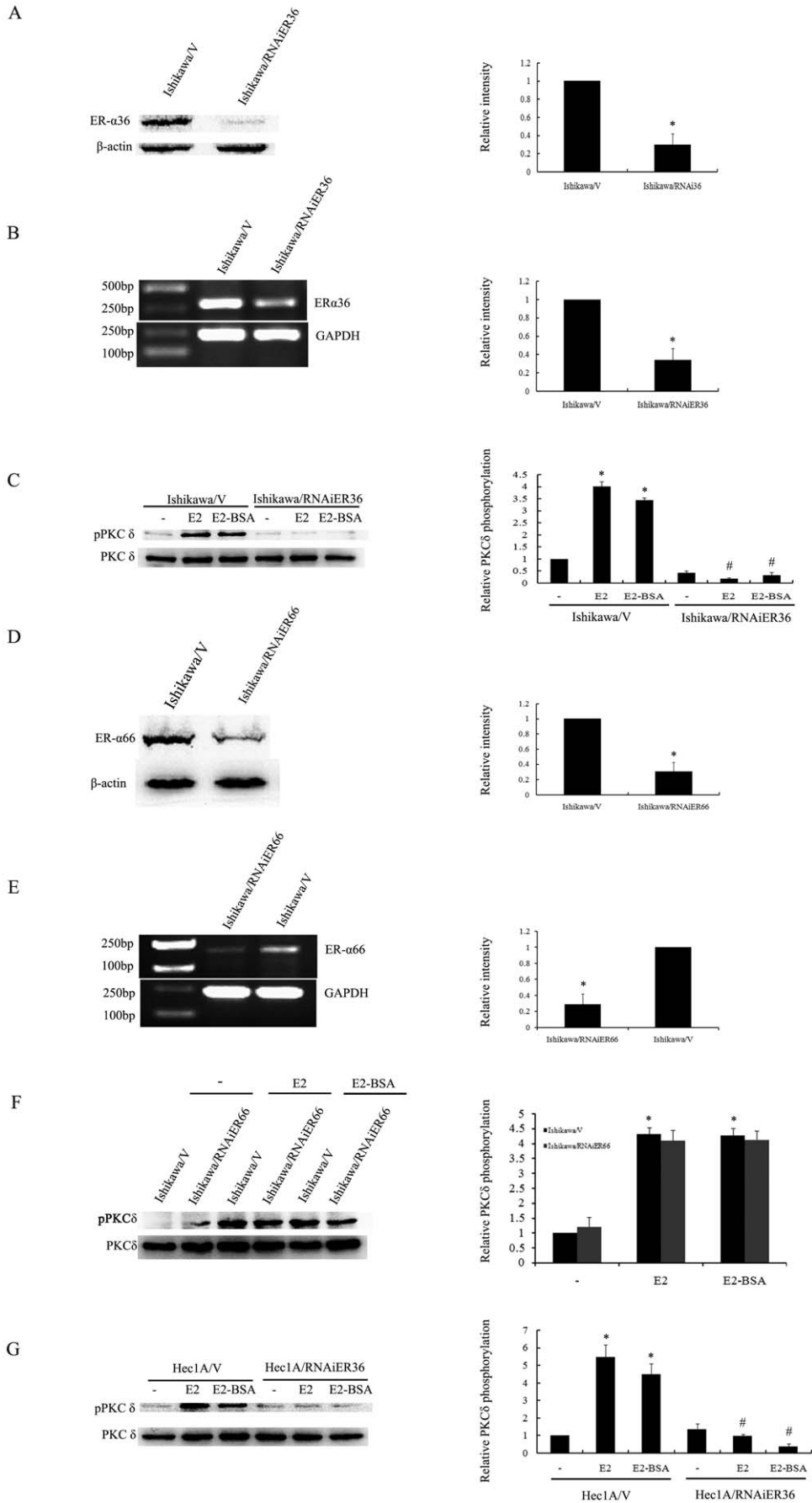


Figure 3. ER- α 36 mediates E2-stimulated PKC δ activation. A and B. ER- α 36 expression in Ishikawa/V and Ishikawa/RNAiER36 cells. Each bar represents mean value \pm SEM (n=3). *, P<0.05 compared to Ishikawa/V cells. C. Ishikawa/V and Ishikawa/RNAiER36 cells were treated with 10 nM E2 or 10 nM E2-BSA for 10 min, and PKC δ phosphorylation was analyzed by Western blot. Total levels of PKC δ were measured as controls, and each bar represents mean value \pm SEM (n=3). *, P<0.05 compared to untreated cells. #, P<0.05 compared to E2- or E2-BSA- treated Ishikawa/V cells. D and E. ER- α 66 expression in Ishikawa/V and Ishikawa/RNAiER66 cells. Each bar represents mean value \pm SEM (n=3). *, P<0.05 compared to Ishikawa/V cells. F. Ishikawa/V and Ishikawa/RNAiER66 cells were treated with 10 nM E2 or 10 nM E2-BSA for 10 min, and then PKC δ phosphorylation was assessed with Western blot. Total PKC δ was measured as controls. Each bar represents mean value \pm SEM (n=3). *, P<0.05 compared to untreated cells. G, Hec1A/V and Hec1A/RNAiER36 cells were treated with 10 nM E2 or 10 nM E2-BSA for 10 min, and PKC δ phosphorylation was analyzed by Western blot. Total PKC δ was measured as controls. Each bar represents mean value \pm SEM (n=3).*, P<0.05 compared to untreated cells. #, P<0.05 compared to E2- or E2-BSA-treated Hec-1A/V cells.
doi:10.1371/journal.pone.0015408.g003

Although early studies of the effect of PKC δ on cell proliferation suggested that PKC δ suppresses proliferation [32,33,34]. However, several reports have demonstrated that PKC δ could act as a positive regulator of cell proliferation [35,36,37,38]. Here, we found that both E2 and E2-BSA stimulated the activation of PKC δ signaling pathway in Ishikawa cells, and knockdown of ER- α 36 expression with the shRNA abrogated E2-induced PKC δ phosphorylation. These indicated that ER- α 36 mediates membrane-initiated PKC δ pathway induced by E2. In general, increased PKC α activity is associated with increased motility and proliferation of cancer cells [39,40,41]. In addition, PKC α has been shown to inhibit or facilitate apoptosis of cancer cells [42,43]. We found that E2 was unable to induce phosphorylation of PKC α in Ishikawa cells, suggesting that E2-induced endometrial cancer growth through signaling pathways other than PKC α .

cAMP is a second messenger that plays a role in intracellular signal transduction of various stimuli. A major function of cAMP in eukaryotes is activation of cAMP-dependent protein kinase (PKA). In the present study, we found that E2 can rapidly activate PKA within 3 min. However, PKA could not be activated by E2-BSA that is unable to traverse the plasma membrane, suggesting that E2 activate PKA not through the membrane-based ER- α 36 in Ishikawa cells.

The MAPK family consists of ERK, JNK and P38. ERK plays an essential role in cell growth. Increasing evidence has shown that non-genomic activation of the ERK1/2 by estrogen in both breast and endometrial cancer cells [44,45,46]. Previous studies have shown that the ERK1/2 can be efficiently activated by protein kinase C [47,48]. Here, we found that ER- α 36 mediates E2-induced activation of the MAPK/ERK pathway via PKC δ in Ishikawa cells.

Cyclin D1 is a key regulator of cell cycle progression through the G1 phase that, upon its induction, binds and regulates cyclin-dependent kinases (cdks) 4 or 6. The cyclin D1/cdk complexes are capable of phosphorylation substrates essential to promote cell cycle [21,49,50]. Cyclin D1 plays an important role in the pathogenesis of endometrial hyperplasia [18,51,52]. Previous studies have demonstrated that PKC δ and MAPK/ERK pathways up-regulate cyclin D1 protein expression [19,51,53]. Here, we demonstrated that E2 induced cyclin D1 expression through ER- α 36-mediated activation of the PKC δ /ERK signaling pathway.

In summary, our results indicate that extra-nuclear ER- α 36 mediates the non-genomic estrogen signaling pathways in Ishikawa cells and suggest ER- α 36 is a novel and important player in endometrial carcinogenesis.

Materials and Methods

Materials and Reagents

All chemicals and reagents were purchased from Sigma unless otherwise indicated. Anti-phospho-PKC α (ser⁶³⁷) antibody was

purchased from Upstate (Temecula, CA). Antibodies for PKC α , phospho-PKC δ (Thr⁵⁰⁵), PKC δ , phospho-ERK1/2 (Thr²⁰²/Tyr²⁰⁴) and ERK1/2 were purchased from Cell Signaling (Beverly, MA). Antibodies against ER- α 66, cyclin D1, cdk4 and β -actin were purchased from Santa Cruz Biotechnology (Santa Cruz, CA). The ER- α 36 specific antibody against the 20 unique amino acid at the C-terminal of ER- α 36, ER- α 36 interference plasmid and control plasmids were described before [8,15]. Hoechst 33258, MTT, U0126, HBDDE, Rottlerin, Bisindolylmaleimide and Forskolin were purchased from Calbiochem (La Jolla, CA). PepTag Assay kit for Non-Radioactive Detection of cAMP-Dependent Protein Kinase was obtained from Promega (Madison, WI).

Cell Culture and Cell Lines

The human endometrial cancer cell line Ishikawa was obtained from Dr. Li-Hui Wei (Peking University People's Hospital, Beijing) and cultured in Dulbecco's modified Eagle's medium (Gibco-BRL, USA) with 10% fetal calf serum (Hyclone, UT), 5 μ g/ml insulin, and maintained at 37°C in a humidified atmosphere of 5% CO₂. We established stable Ishikawa cell line transfected with an ER- α 36 shRNA expression vector (Ishikawa/RNAiER36), an ER- α 66 shRNA expression vector (Ishikawa/RNAiER66) and the empty expression vector (Ishikawa/V). Briefly, the shRNA expression vector pRNAT-U6.1/Neo plasmid containing the shRNA against the 3'UTRs of ER- α 36 and ER- α 66, respectively and the empty expression vector were transfected into Ishikawa cells with Lipofectamine 2000 (Invitrogen, Carlsbad, CA) according to the manufacturer's instruction. Forty-eight hours after transfection, cells were re-plated and selected with 500 μ g/ml of G418 for two weeks. The medium was changed every three days until colonies appeared. Clones were pooled and expanded for further analysis.

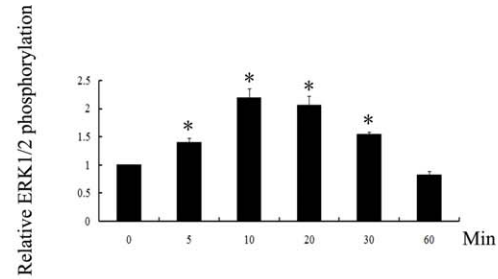
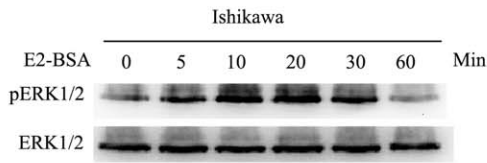
Confocal Microscopy

The cellular localization of ER- α 36 and ER- α 66 were determined by the indirect immunofluorescence assay. Ishikawa cells cultured on sterile glass coverslips were fixed with 4% paraformaldehyde in PBS for 10 min. After permeabilized with 0.4% Triton X-100 for 10 min at room temperature, cells were blocked in 4% BSA-supplemented PBS for 1 hour and incubated overnight at 4°C with anti-ER- α 36-specific antibody or anti-ER- α 66 antibody. After three washes in PBS, the cells were labeled with FITC-conjugated secondary antibody. Hoechst 33258 was subsequently added for nuclear staining. Microscopic analysis was performed using a confocal laser-scanning microscope (Zeiss LSM 710 META, Germany).

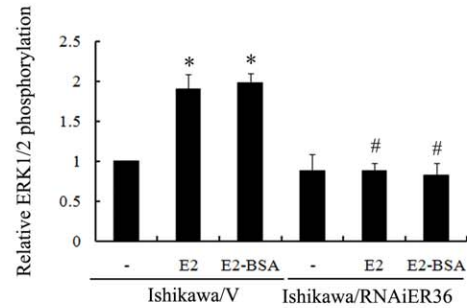
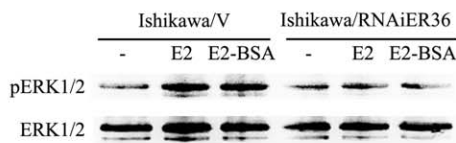
Western Blot Analysis

Western blotting was performed as described previously [17]. Cells maintained in phenol-red-free DMEM (Gibco-BRL, USA) with 2.5% dextran charcoal-stripped fetal calf serum (Biochrom AG, Germany) for 48–72 h were switched to medium without

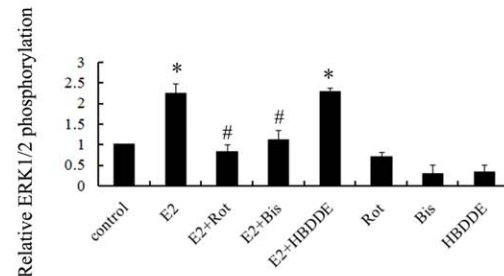
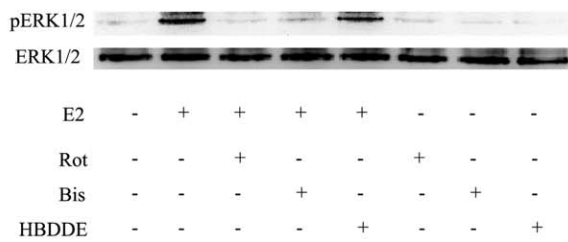
A



B



C



D

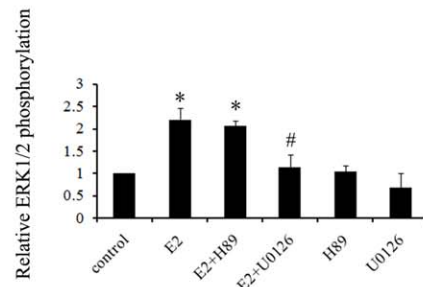
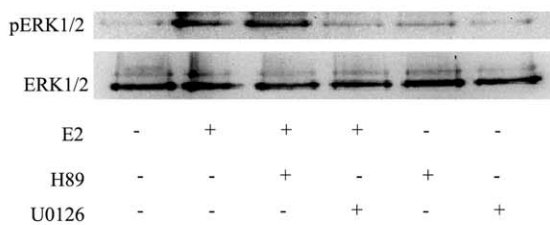
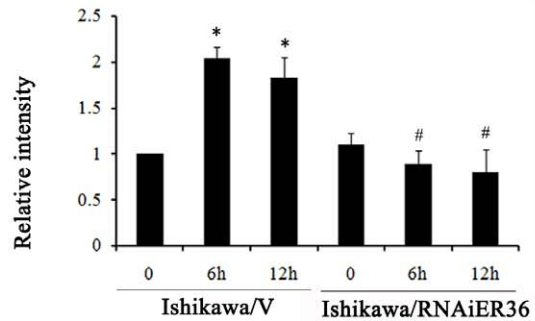
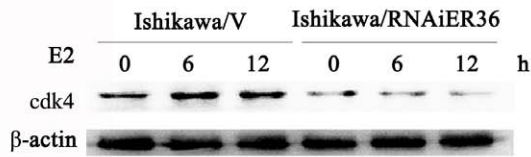
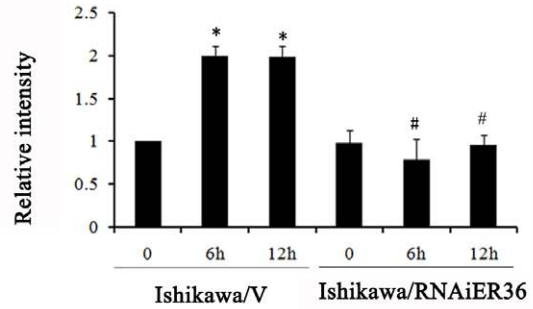
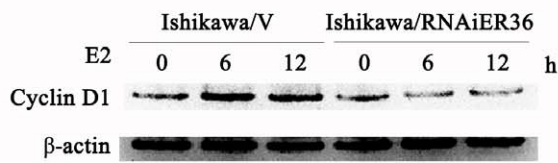


Figure 4. E2 activates the ERK1/2 through the PKC δ signaling pathway. A. Serum starved Ishikawa cells were treated with E2-BSA for indicated time points and cell lysates were immunoblotted with antibody against phosphorylated ERK1/2. Levels of phosphorylation were normalized with the total ERK1/2 protein, and each bar represents means value \pm SEM (n=3). *, P<0.05 compared to untreated cells. B. Ishikawa/V and Ishikawa/RNAiER36 cells were treated with 10 nM E2 or 10 nM E2-BSA for 10 min, and ERK1/2 phosphorylation was analyzed with Western blot. Expression was normalized to total ERK1/2, and each bar represents mean value \pm SEM (n=3).*, P<0.05 compared to untreated cells. #, P<0.05 compared to E2- or E2-BSA-treated Ishikawa/V cells. C. Serum starved Ishikawa cells were treated with 10 nM E2 or together with 5 μ M of PKC δ specific inhibitor rottlerin, 5 μ M of pan-PKC inhibitor bisindolylmaleimide or 40 μ M of PKC α specific inhibitor HBDDE. ERK1/2 phosphorylation was analyzed with Western blot. Expression was normalized to total ERK1/2, and each bar represents mean value \pm SEM (n=3). *, P<0.05 compared to untreated cells. #, P<0.05 compared to E2-treated Ishikawa cells. D. Serum starved Ishikawa cells were treated with 10 nM E2 or together with 5 μ M of PKA specific inhibitor H89 or 10 μ M of MEK inhibitor U0126, and ERK1/2 phosphorylation was analyzed with Western blot. Expression was normalized to total ERK1/2, and each bar represents mean value \pm SEM (n=3). *, P<0.05 compared to untreated cells. #, P<0.05 compared to E2-treated Ishikawa cells. doi:10.1371/journal.pone.0015408.g004

A



B

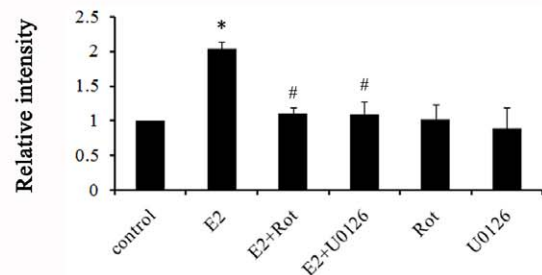
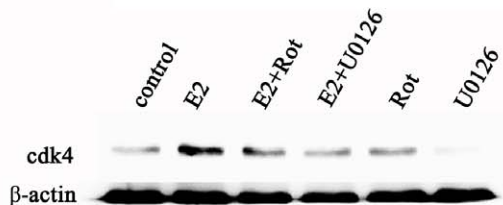
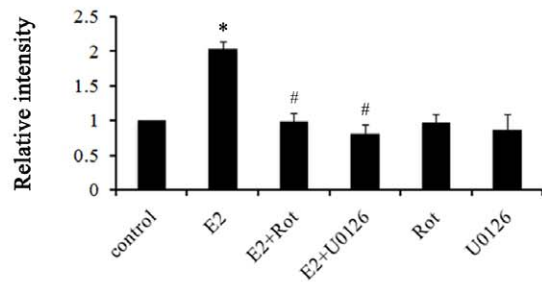
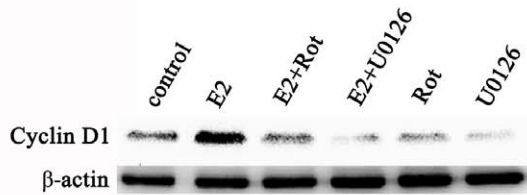
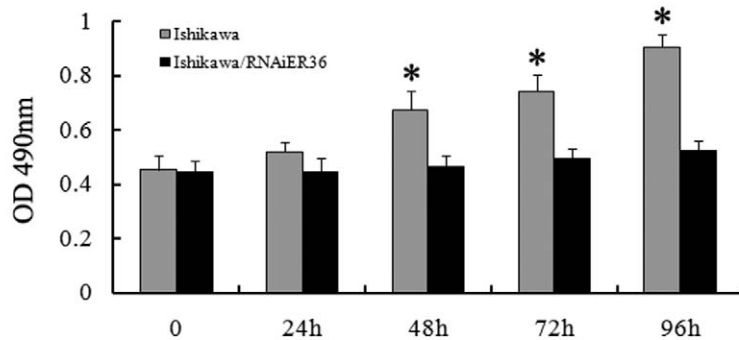


Figure 5. ER- α 36 mediates E2-stimulated cyclin D1 expression. A. Western blot analysis of cyclin D1 and cdk4 expression in Ishikawa/V and Ishikawa/RNAiER36 cells treated with 10 nM E2 for 6 h and 12 h. Levels of cyclin D1 and cdk4 expression were normalized to the levels of β -actin, and each bar represents mean value \pm SEM (n=3). *, P<0.05 compared to untreated cells. #, P<0.05 compared to E2-treated Ishikawa/V cells. B. Ishikawa cells were treated for 12 h with E2 or together with 5 μ M of PKC δ inhibitor rottlerin or 10 μ M MEK inhibitor U0126. Levels of cyclin D1 and cdk4 expression were normalized to the levels of β -actin, and each bar represents mean value \pm SEM (n=3). *, P<0.05 compared to untreated cells. #, P<0.05 compared to E2-treated Ishikawa cells.
doi:10.1371/journal.pone.0015408.g005

A



B

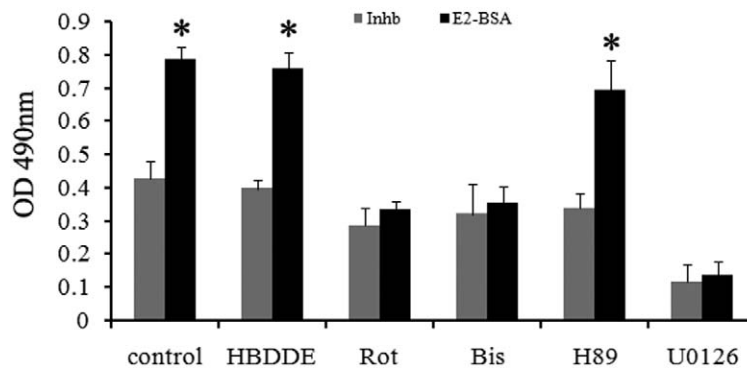


Figure 6. ER- α 36 mediates E2 stimulated cell proliferation. A. Ishikawa/V and Ishikawa/RNAiER36 cells were treated with 10 nM E2-BSA for 24 h, 48 h, 72 h and 96 h. MTT assay was performed as described in the materials and methods. Results of three independent experiments were averaged and mean value \pm SEM are shown. *, $P < 0.05$ compared to E2-BSA treated Ishikawa/V cells respectively. B. Ishikawa cells were treated with 10 nM E2-BSA alone or together with 5 μ M rottlerin, a PKC δ specific inhibitor, or 5 μ M bisindolylmaleimide, a pan-PKC inhibitor, or HBDDE, a PKC α specific inhibitor, or 5 μ M H89, a PKA specific inhibitor for 72 h, and MTT assays were then performed. Results of three independent experiments were averaged and mean value \pm SEM are shown. *, $P < 0.05$ compared to control cells. doi:10.1371/journal.pone.0015408.g006

12 h before treatment with the agents indicated. The cells were collected in ice-cold PBS, and the cell extracts were prepared in RIPA buffer with proteinase inhibitor cocktail from Sigma (St.Louis, MO). The protein concentrations of the cell lysates were determined and boiled with gel-loading buffer for 10 min at 100°C. Samples containing 30 μ g of total protein were electrophoresed on 10% SDS-polyacrylamide gels and transferred to PVDF membrane (Millipore, Temecula, CA). The membranes were probed with appropriate primary antibodies and visualized with the corresponding secondary antibodies and the enhanced chemiluminescence detection system (Amersham, Piscataway, NJ).

RT-PCR

Total RNA was extracted by TRIzol reagent (Invitrogen, Carlsbad, CA). Total RNA (2 μ g) was used for production of the first strand cDNA by a reverse transcriptase mixture (Takara, Dalian, P.R.China). The PCR primer sets were listed as the following: ER- α 36: forward primer: 5'-CAAGTGGTTTCCTCGTGTCTAAAGC-3'; reverse primer 5'-GTT GAGTGT-

TGGTTGCCAGG-3'. ER- α 66: forward primer: 5'-CACTCAA-CAGCGT GTCTCCGA-3'; reverse primer: 5'-CCAATCTT-TCTCTGCCACCCTG-3'. GAPDH (control): forward primer: 5'-ACGGATTTGGTTCGTATTGGG-3'; reverse primer: 5'-TG-ATTTTGGAGGGATCTCGC-3'. PCR fragments were visualized on a 2% agarose gel stained with ethidium bromide.

PKA Measurement

Cell lysates were assayed immediately after lyses using the PepTag Assay kit (Promega, Madison, WI) to assess the activities of cAMP-dependent protein kinases according to the manufacturer's instructions. Briefly, lysates were prepared from treated cells and incubated with a fluorescently labeled PKA peptide substrate. Phosphorylation of the peptide by activated PKA resulted in a change in its electrophoretic mobility that reflects the relative PKA activity. The agarose gels were subjected to electrophoresis at 110 V for 20 min and visualized under UV light. The upper band is non-phosphorylated substrate peptide, the lower most band is substrate phosphorylated by PKA.

MTT Assay

Cell proliferation was analyzed using the 3-(4, 5-dimethylthiazol-2-yl)-2, 5-diphenyltrazolium bromide (MTT) assay. Briefly, cells were seeded in a 96-well dish to a final concentration of 1×10^4 cells/well and incubated in DMEM medium containing 10% FCS for 24 h. Cells were then cultured in phenol red-free medium containing 2.5% charcoal-stripped FCS (Biochrom AG, Berlin, Germany) with the indicated treatments. Medium was removed and fresh medium was added to each well along with 20 μ l of MTT solution (5 mg/ml). After 4 h incubation, 150 μ l of DMSO were added to each well. The plates were read at wavelength of 490 nm using a microplate reader (Biotech PowerwaveTM, USA). Eight duplicate wells were used for each treatment, and experiments were repeated three times.

References

- Shang Y (2006) Molecular mechanisms of oestrogen and SERMs in endometrial carcinogenesis. *Nat Rev Cancer* 6: 360–368.
- Chaudhry P, Asselin E (2009) Resistance to chemotherapy and hormone therapy in endometrial cancer. *Endocr Relat Cancer* 16: 363–380.
- Henderson BE, Feigelson HS (2000) Hormonal carcinogenesis. *Carcinogenesis* 21: 427–433.
- Muramatsu M, Inoue S (2000) Estrogen receptors: how do they control reproductive and nonreproductive functions? *Biochem Biophys Res Commun* 270: 1–10.
- Zhang Y, Wei L, Wang J, Sun T (2003) Role of phosphatase PTEN in the activation of extracellular signal-regulated kinases induced by estradiol in endometrial carcinoma cells. *Chin Med J (Engl)* 116: 383–387.
- Rosenfeld MG, Glass CK (2001) Coregulator codes of transcriptional regulation by nuclear receptors. *J Biol Chem* 276: 36865–36868.
- Acconcia F, Ascenzi P, Bocedi A, Spisni E, Tomasi V, et al. (2005) Palmitoylation-dependent estrogen receptor alpha membrane localization: regulation by 17beta-estradiol. *Mol Biol Cell* 16: 231–237.
- Wang Z, Zhang X, Shen P, Loggie BW, Chang Y, et al. (2005) Identification, cloning, and expression of human estrogen receptor-alpha36, a novel variant of human estrogen receptor-alpha66. *Biochem Biophys Res Commun* 336: 1023–1027.
- Newton AC (1997) Regulation of protein kinase C. *Curr Opin Cell Biol* 9: 161–167.
- Nishizuka Y (1986) Studies and perspectives of protein kinase C. *Science* 233: 305–312.
- Nishizuka Y (1988) The molecular heterogeneity of protein kinase C and its implications for cellular regulation. *Nature* 334: 661–665.
- Nishizuka Y (1995) Protein kinase C and lipid signaling for sustained cellular responses. *FASEB J* 9: 484–496.
- Way KJ, Chou E, King GL (2000) Identification of PKC-isoform-specific biological actions using pharmacological approaches. *Trends Pharmacol Sci* 21: 181–187.
- Boyan BD, Sylvia VL, Frambach T, Lohmann CH, Dietl J, et al. (2003) Estrogen-dependent rapid activation of protein kinase C in estrogen receptor-positive MCF-7 breast cancer cells and estrogen receptor-negative HCC38 cells is membrane-mediated and inhibited by tamoxifen. *Endocrinology* 144: 1812–1824.
- Wang Z, Zhang X, Shen P, Loggie BW, Chang Y, et al. (2006) A variant of estrogen receptor- α , hER- α 36: transduction of estrogen- and antiestrogen-dependent membrane-initiated mitogenic signaling. *Proc Natl Acad Sci U S A* 103: 9063–9068.
- Vivacqua A, Bonfiglio D, Recchia AG, Musti AM, Picard D, et al. (2006) The G protein-coupled receptor GPR30 mediates the proliferative effects induced by 17beta-estradiol and hydroxytamoxifen in endometrial cancer cells. *Mol Endocrinol* 20: 631–646.
- Lin SL, Yan LY, Liang XW, Wang ZB, Wang ZY, et al. (2009) A novel variant of ER- α , ER- α 36 mediates testosterone-stimulated ERK and Akt activation in endometrial cancer HeLa cells. *Reprod Biol Endocrinol* 7: 102.
- Ruhul Quddus M, Latkovich P, Castellani WJ, James Sung C, Steinhoff MM, et al. (2002) Expression of cyclin D1 in normal, metaplastic, hyperplastic endometrium and endometrioid carcinoma suggests a role in endometrial carcinogenesis. *Arch Pathol Lab Med* 126: 459–463.
- Kashima H, Shiozawa T, Miyamoto T, Suzuki A, Uchikawa J, et al. (2009) Autocrine stimulation of IGF1 in estrogen-induced growth of endometrial carcinoma cells: involvement of the mitogen-activated protein kinase pathway followed by up-regulation of cyclin D1 and cyclin E. *Endocr Relat Cancer* 16: 113–122.
- Caldon CE, Sergio CM, Schutte J, Boersma MN, Sutherland RL, et al. (2009) Estrogen regulation of cyclin E2 requires cyclin D1 but not c-Myc. *Mol Cell Biol* 29: 4623–4639.

Statistical analysis

Statistical analysis was performed with the paired-samples *t*-test, or ANOVA followed by the Student-Newman-Keuls testing to determine differences in means. A level of $P < 0.05$ was considered statistically significant. All statistical tests were three-sided.

Acknowledgments

We would thank Dr. Li-Hui Wei for kindly providing the Ishikawa cells. We also wish to thank Shi-Wen Li, Yi Hou, and Hua Qin for their technical assistance.

Author Contributions

Conceived and designed the experiments: Z-YW JS Q-YS J-ST. Performed the experiments: J-ST Q-HZ Z-BW SL C-RY. Analyzed the data: J-ST X-QF. Contributed reagents/materials/analysis tools: Z-YW YH. Wrote the paper: J-ST Z-YW Q-YS.

- Roy PG, Thompson AM (2006) Cyclin D1 and breast cancer. *Breast* 15: 718–727.
- Marino M, Galluzzo P, Ascenzi P (2006) Estrogen signaling multiple pathways to impact gene transcription. *Curr Genomics* 7: 497–508.
- Ordonez-Moran P, Munoz A (2009) Nuclear receptors: genomic and nongenomic effects converge. *Cell Cycle* 8: 1675–1680.
- Zou Y, Ding L, Coleman M, Wang Z (2009) Estrogen receptor-alpha (ER-alpha) suppresses expression of its variant ER-alpha 36. *FEBS Lett* 583: 1368–1374.
- Lin SL, Yan LY, Zhang XT, Yuan J, Li M, et al. ER-alpha36, a variant of ER-alpha, promotes tamoxifen agonist action in endometrial cancer cells via the MAPK/ERK and PI3K/Akt pathways. *PLoS One* 5: e9013.
- Hsieh YC, Yu HP, Frink M, Suzuki T, Choudhry MA, et al. (2007) G protein-coupled receptor 30-dependent protein kinase A pathway is critical in nongenomic effects of estrogen in attenuating liver injury after trauma-hemorrhage. *Am J Pathol* 170: 1210–1218.
- Muchekehu RW, Harvey BJ (2008) 17beta-estradiol rapidly mobilizes intracellular calcium from ryanodine-receptor-gated stores via a PKC-PKA-Erk-dependent pathway in the human eccrine sweat gland cell line NCL-SG3. *Cell Calcium* 44: 276–288.
- Guo RX, Wei LH, Tu Z, Sun PM, Wang JL, et al. (2006) 17 beta-estradiol activates PI3K/Akt signaling pathway by estrogen receptor (ER)-dependent and ER-independent mechanisms in endometrial cancer cells. *J Steroid Biochem Mol Biol* 99: 9–18.
- Collins P, Webb C (1999) Estrogen hits the surface. *Nat Med* 5: 1130–1131.
- Watson CS, Campbell CH, Gametchu B (1999) Membrane oestrogen receptors on rat pituitary tumour cells: immuno-identification and responses to oestradiol and xenoestrogens. *Exp Physiol* 84: 1013–1022.
- Zhang L, Li X, Zhao L, Zhang G, Wang J, et al. (2009) Nongenomic effect of estrogen on the MAPK signaling pathway and calcium influx in endometrial carcinoma cells. *J Cell Biochem* 106: 553–562.
- Deucher A, Efimova T, Eckert RL (2002) Calcium-dependent involucrin expression is inversely regulated by protein kinase C (PKC)alpha and PKCdelta. *J Biol Chem* 277: 17032–17040.
- Reyland ME (2007) Protein kinase Cdelta and apoptosis. *Biochem Soc Trans* 35: 1001–1004.
- Brodie C, Blumberg PM (2003) Regulation of cell apoptosis by protein kinase C delta. *Apoptosis* 8: 19–27.
- Liu JF, Crepin M, Liu JM, Barritault D, Ledoux D (2002) FGF-2 and TPA induce matrix metalloproteinase-9 secretion in MCF-7 cells through PKC activation of the Ras/ERK pathway. *Biochem Biophys Res Commun* 293: 1174–1182.
- Grossoni VC, Falbo KB, Kazanietz MG, de Kier Joffe ED, Urtreger AJ (2007) Protein kinase C delta enhances proliferation and survival of murine mammary cells. *Mol Carcinog* 46: 381–390.
- Li W, Jiang YX, Zhang J, Soon L, Flechner L, et al. (1998) Protein kinase C-delta is an important signaling molecule in insulin-like growth factor I receptor-mediated cell transformation. *Mol Cell Biol* 18: 5888–5898.
- Sinha R, Kiley SC, Lu JX, Thompson HJ, Moraes R, et al. (1999) Effects of methylselenocysteine on PKC activity, cdk2 phosphorylation and gadd gene expression in synchronized mouse mammary epithelial tumor cells. *Cancer Lett* 146: 135–145.
- Koivunen J, Aaltonen V, Peltonen J (2006) Protein kinase C (PKC) family in cancer progression. *Cancer Lett* 235: 1–10.
- Koivunen J, Aaltonen V, Koskela S, Lehenkari P, Laato M, et al. (2004) Protein kinase C alpha/beta inhibitor Go6976 promotes formation of cell junctions and inhibits invasion of urinary bladder carcinoma cells. *Cancer Res* 64: 5693–5701.
- Nakagawa S, Fujii T, Yokoyama G, Kazanietz MG, Yamana H, et al. (2003) Cell growth inhibition by all-trans retinoic acid in SKBR-3 breast cancer cells:

- involvement of protein kinase C α and extracellular signal-regulated kinase mitogen-activated protein kinase. *Mol Carcinog* 38: 106–116.
42. Jiang XH, Tu SP, Cui JT, Lin MC, Xia HH, et al. (2004) Antisense targeting protein kinase C α and beta1 inhibits gastric carcinogenesis. *Cancer Res* 64: 5787–5794.
 43. Leirdal M, Sioud M (1999) Ribozyme inhibition of the protein kinase C α triggers apoptosis in glioma cells. *Br J Cancer* 80: 1558–1564.
 44. Singleton DW, Feng Y, Burd CJ, Khan SA (2003) Nongenomic activity and subsequent c-fos induction by estrogen receptor ligands are not sufficient to promote deoxyribonucleic acid synthesis in human endometrial adenocarcinoma cells. *Endocrinology* 144: 121–128.
 45. Zhang Z, Maier B, Santen RJ, Song RX (2002) Membrane association of estrogen receptor alpha mediates estrogen effect on MAPK activation. *Biochem Biophys Res Commun* 294: 926–933.
 46. Song RX, McPherson RA, Adam L, Bao Y, Shupnik M, et al. (2002) Linkage of rapid estrogen action to MAPK activation by ERalpha-Shc association and Shc pathway activation. *Mol Endocrinol* 16: 116–127.
 47. Ueda Y, Hirai S, Osada S, Suzuki A, Mizuno K, et al. (1996) Protein kinase C activates the MEK-ERK pathway in a manner independent of Ras and dependent on Raf. *J Biol Chem* 271: 23512–23519.
 48. Qiu ZH, Leslie CC (1994) Protein kinase C-dependent and -independent pathways of mitogen-activated protein kinase activation in macrophages by stimuli that activate phospholipase A2. *J Biol Chem* 269: 19480–19487.
 49. Knudsen KE, Arden KC, Cavenee WK (1998) Multiple G1 regulatory elements control the androgen-dependent proliferation of prostatic carcinoma cells. *J Biol Chem* 273: 20213–20222.
 50. Quelle DE, Ashmun RA, Shurtleff SA, Kato JY, Bar-Sagi D, et al. (1993) Overexpression of mouse D-type cyclins accelerates G1 phase in rodent fibroblasts. *Genes Dev* 7: 1559–1571.
 51. Cao QJ, Einstein MH, Anderson PS, Runowicz CD, Balan R, et al. (2002) Expression of COX-2, Ki-67, cyclin D1, and P21 in endometrial endometrioid carcinomas. *Int J Gynecol Pathol* 21: 147–154.
 52. Schmitt JM, Abell E, Wagner A, Davare MA () ERK activation and cell growth require CaM kinases in MCF-7 breast cancer cells. *Mol Cell Biochem* 335: 155–171.
 53. Shiozawa T, Miyamoto T, Kashima H, Nakayama K, Nikaido T, et al. (2004) Estrogen-induced proliferation of normal endometrial glandular cells is initiated by transcriptional activation of cyclin D1 via binding of c-Jun to an AP-1 sequence. *Oncogene* 23: 8603–8610.