



OPEN

Imeglimin exerts favorable effects on pancreatic β -cells by improving morphology in mitochondria and increasing the number of insulin granules

Junpei Sanada, Atsushi Obata, Yoshiro Fushimi, Tomohiko Kimura, Masashi Shimoda, Tomoko Ikeda, Yuka Nogami, Yoshiyuki Obata, Yuki Yamasaki, Shuhei Nakanishi, Tomoatsu Mune, Kohei Kaku & Hideaki Kaneto

Imeglimin is a new anti-diabetic drug commercialized in Japan (Twymeeg[®]) and has been drawing much attention in diabetes research area as well as in clinical practice. In this study, we evaluated the effect of imeglimin on pancreatic β -cells. First, single-dose administration of imeglimin enhanced insulin secretion from β -cells and decreased blood glucose levels in type 2 diabetic db/db mice. In addition, single-dose administration of imeglimin significantly augmented insulin secretion in response to glucose from islets isolated from non-diabetic db/m mice. Second, during an oral glucose tolerance test 4-week chronic treatment with imeglimin enhanced insulin secretion and ameliorated glycemic control in diabetic db/db mice. Furthermore, the examination with electron microscope image showed that imeglimin exerted favorable effects on morphology in β -cell mitochondria and substantially increased the number of insulin granules in type 2 diabetic db/db and KK-Ay mice. Finally, imeglimin reduced the percentage of apoptotic β -cell death which was accompanied by reduced expression levels of various genes related to apoptosis and inflammation in β -cells. Taken together, imeglimin directly enhances insulin secretion in response to glucose from β -cells, increases the number of insulin granules, exerts favorable effects on morphology in β -cell mitochondria, and reduces apoptotic β -cell death in type 2 diabetic mice, which finally leads to amelioration of glycemic control.

The number of subjects with type 2 diabetes mellitus is increasing worldwide due to lifestyle changes such as increase of fat intake and decrease of exercise. It is thought that the number of diabetes patients reflects an increase of overweight and obesity¹. It is well known that inadequate glycemic control finally causes micro and macrovascular complications, which further leads to the decline in activities of daily life and increase of mortality.

Hyperglycemia is caused by increase of insulin resistance in insulin target tissues and/or decrease of insulin secretion from pancreatic β -cells. Increase of insulin resistance is associated with accumulation of visceral fat and/or decrease of physical activity. Decrease of insulin secretion in type 2 diabetes mellitus is often accompanied by decrease of pancreatic β -cell mass². Indeed, it was reported that β -cell mass was reduced by 30% in subjects with type 2 diabetes mellitus compared with healthy subjects³.

It is known that apoptosis is involved in the reduction of β -cell mass²⁻⁴. This phenomenon is induced by alteration of various factors such as inflammation^{5,6}, oxidative stress⁷ and endoplasmic reticulum (ER) stress⁸ due to chronic hyperglycemia. In addition, it is known that β -cells have less expression of antioxidant enzymes such as catalase and superoxide dismutase (SOD) compared to other organs. Thereby, β -cells are particularly vulnerable to oxidative stress induced by hyperglycemia. Therefore, it is very important to obtain adequate glycemic control to protect β -cells from oxidative stress. It has been reported so far that β -cell apoptosis is reduced by the treatment with anti-diabetic drugs in human and rodents⁹⁻¹².

Department of Diabetes, Endocrinology and Metabolism, Kawasaki Medical School, 577 Matsushima, Kurashiki 701-0192, Japan. email: kaneto@med.kawasaki-m.ac.jp

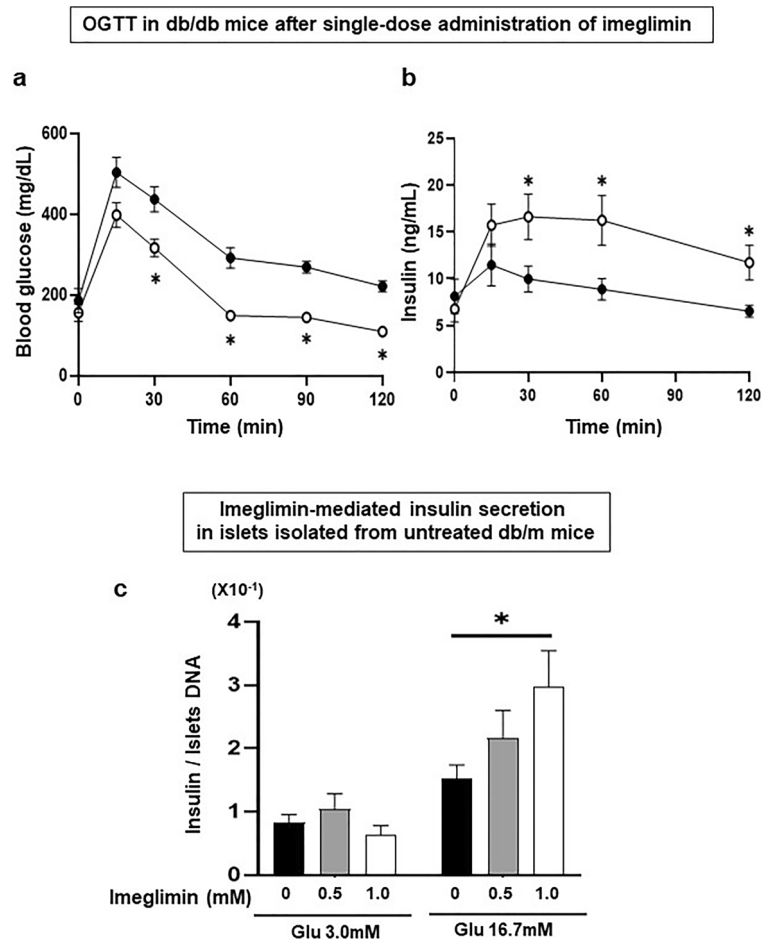


Figure 1. (a, b) Effects of single-dose administration of imeglimin on blood glucose and serum insulin levels in obese type 2 diabetic db/db mice. In oral glucose tolerance test after single-dose administration of imeglimin in 7-week-old db/db mice, blood glucose levels were significantly lower in the mice treated with imeglimin together with significant increase of insulin secretion compared to those without the treatment (control: black circle, imeglimin: white circle, $n = 6$). (c) Effects of single-dose administration of imeglimin on glucose-stimulated insulin secretion in pancreatic islets isolated from non-diabetic db/m mice. Insulin secretion was significantly augmented by imeglimin in a dose-dependent manner under a high glucose concentration, but not in a low glucose concentration, in islets isolated from db/m mice (db/m mice, $n = 9-10$). Values are the mean \pm SEM of data obtained from each group. * $p < 0.05$.

Imeglmin is a new anti-diabetic drug commercialized in Japan (Twymeeg[®]), and clinical trials with imeglimin in human subjects (TIMES 1–3) have shown its efficacy and safety of long-term therapy and its effectiveness of combination with other oral anti-diabetic drugs or insulin therapy^{13–15}. The difference from the older anti-diabetic drugs is that the effects of imeglimin can be expected in various aspects. Several effects of imeglimin have been reported in animal experiments. First, imeglimin increases insulin secretion in response to glucose^{16,17}, preserves β -cell mass¹⁸, and reduces pancreatic β -cell apoptosis by modulating the ER stress¹⁹. Second, imeglimin improves insulin sensitivity and inhibits glycogenesis^{20,21}. In addition, it was reported that imeglimin prevented heart failure with preserved ejection fraction²² and ameliorated cardiac dysfunction in Zucker fa/fa rats²³. Finally, imeglimin alleviates mitochondrial dysfunction in pancreatic β -cells and the liver^{20,21}. However, the reports of these effects are still limited, and the mechanisms are not yet fully unknown.

In this study, we evaluated the effect of imeglimin on pancreatic β -cells using diabetic model mice such as db/db and KK-Ay mice and pancreatic islets isolated from diabetic and non-diabetic mice.

Results

Effects of single-dose administration of imeglimin on insulin secretion from pancreatic β -cells in type 2 diabetic and non-diabetic mice. To examine the effects of single-dose administration of imeglimin, we performed oral glucose tolerance test after single-dose administration of imeglimin in 7-week-old obese type 2 diabetic db/db mice. As shown in Fig. 1a, blood glucose levels were significantly lower in the mice treated with imeglimin. Also, as shown in Fig. 1b, serum insulin levels were significantly higher at 30 min and this effect was preserved until 120 min in the mice treated with imeglimin compared to those without treatment.

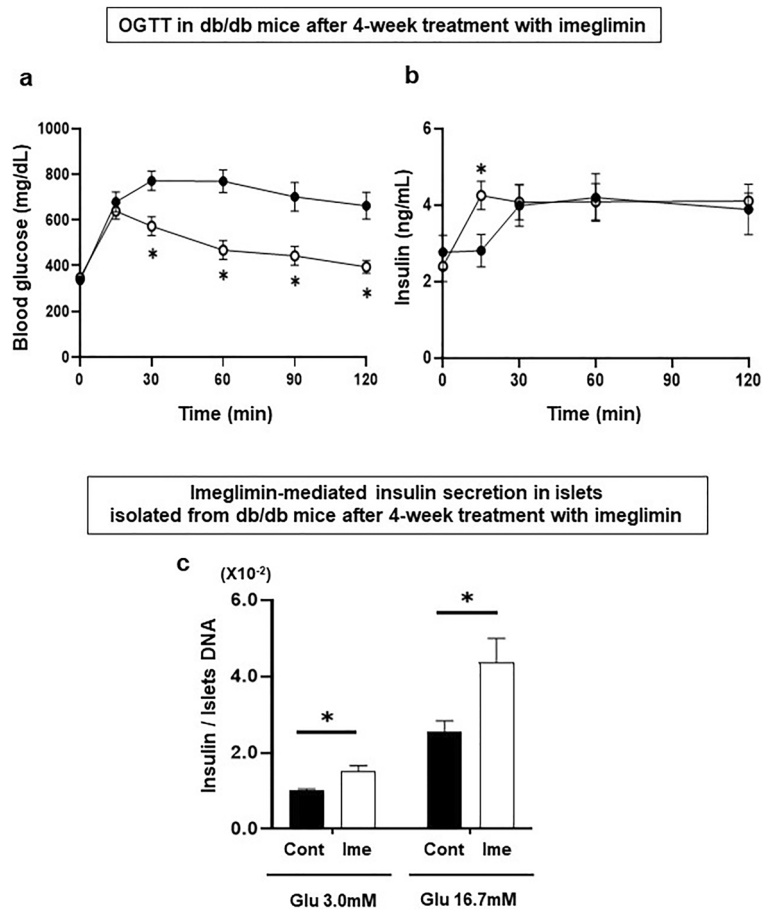


Figure 2. (a, b) Effects of chronic administration of imeglimin on blood glucose and serum insulin levels in obese type 2 diabetic db/db mice. In oral glucose tolerance test after 4-week administration of imeglimin in db/db mice, blood glucose levels were significantly lower in the mice treated with imeglimin together with significant increase of insulin secretion compared to those without the treatment (control: black circle, imeglimin: white circle, $n=6$). (c) Glucose-stimulated insulin secretion in islets isolated from db/db mice after 4-week treatment with imeglimin. Insulin secretion was significantly increased in the mice treated with imeglimin compared to those without the treatment ($n=8$). Values are the mean \pm SEM of data obtained from each group. $*p < 0.05$.

In addition, to further examine the effects of single-dose administration of imeglimin on insulin secretion, we evaluated glucose-stimulated insulin secretion after single-dose administration of imeglimin using pancreatic islets isolated from non-diabetic db/m mice. As shown in Fig. 1c, imeglimin significantly augmented insulin secretion in a dose-dependent manner under a high glucose concentration, but not in a low glucose concentration.

Favorable effects of chronic treatment with imeglimin on pancreatic β -cell function and glycemic control in type 2 diabetic mice. To examine the chronic effects of imeglimin on pancreatic β -cell function and glycemic control, we treated obese type 2 diabetic db/db mice with imeglimin for 4 weeks (from 7 weeks old to 11 weeks old). As shown in Fig. 2a, blood glucose levels were significantly lower in the mice treated with imeglimin, compared to those without treatment, and their glucose levels were decreased to the same level before the loading. Also, as shown in Fig. 2b, serum insulin level was significantly higher at 15 min in the mice treated with imeglimin compared to that without treatment.

To further assess the effect of imeglimin on β -cell function, we evaluated glucose-stimulated insulin secretion using islets isolated from db/db mice after 4-week treatment with imeglimin. As shown in Fig. 2c, insulin secretion was significantly increased in islets from mice treated with imeglimin compared to those without treatment.

Next, to evaluate the possible influence of imeglimin on insulin sensitivity, we performed insulin tolerance test after the treatment with imeglimin in diabetic db/db and KK-Ay mice. As shown in Supplemental Fig. 1, there was no difference in blood glucose levels between with and without imeglimin treatment, suggesting that imeglimin does not show overt effect on insulin sensitivity although we should be aware that insulin tolerance test does not necessarily detect all influence on insulin sensitivity.

In addition, we evaluated body weight, serum total cholesterol and triglyceride levels before and after the treatment with imeglimin in non-diabetic db/m mice and type 2 diabetic db/db and KK-Ay mice. As shown in Supplemental Fig. 2, there were no differences in body weight, total cholesterol and triglyceride levels between with and without imeglimin treatment.

Favorable effects of chronic treatment with imeglimin on morphology in β -cell mitochondria and the number of insulin granules in type 2 diabetic mice.

First, to examine the possible influence of imeglimin on pancreatic islet mass, we measured islet mass after 4-week treatment with imeglimin in type 2 diabetic db/db and KK-Ay mice. As shown in Supplemental Fig. 3, however, there was no difference between control and imeglimin group in db/db and KK-Ay mice. Next, to evaluate the possible influence of imeglimin on mitochondrial morphology and the number of insulin granules in β -cells, we observed β -cells in more detail using an electron microscope. Since it was previously reported that imeglimin improved mitochondria function, we evaluated the possible effects of imeglimin on morphology in β -cell mitochondria. As shown in Fig. 3a–d, there was marked difference in morphology in β -cell mitochondria in obese type 2 diabetic db/db mice treated with imeglimin for 4 weeks compared to untreated mice. The mitochondria in β -cells in untreated db/db mice appeared to be swollen and crista structure inside mitochondria was disrupted, which was not observed in db/db mice treated with imeglimin. In addition, the number of insulin granules was lower in β -cells of db/db mice compared to that in non-diabetic db/m mice (Supplemental Fig. 4). As shown in Fig. 3a–d, however, the number of insulin granules was preserved in db/db mice treated with imeglimin compared to untreated mice. Next, we performed quantitative evaluation about the number of insulin granules in β -cells and compared the number between with and without 4-week treatment with imeglimin. As shown in Fig. 3e, the number of insulin granules in β -cells was significantly higher in the mice treated with imeglimin compared to that without treatment. Furthermore, we evaluated the possible influence of imeglimin on the characteristics of insulin granules in more detail. As shown in Fig. 3f, the percentage of dense insulin granules was higher after the treatment with imeglimin compared to that without it. In contrast, the percentage of gray insulin granules tended to be lower after imeglimin treatment. There was no difference in percentage of rod-shaped or empty insulin granules between with and without imeglimin treatment. Similar results were obtained in type 2 diabetic KK-Ay mice. As shown in Fig. 3g–j, there was marked difference in morphology in β -cell mitochondria in KK-Ay mice between with and without 4-week treatment with imeglimin. The mitochondria in β -cells in KK-Ay mice also appeared to be swollen and crista structure was disrupted, which was not observed in KK-Ay mice treated with imeglimin. In addition, the number of insulin granules was lower in β -cells of KK-Ay mice compared to that in non-diabetic db/m mice. As shown in Fig. 3g–j, however, the number of insulin granules was preserved in KK-Ay mice treated with imeglimin compared to that without treatment. Furthermore, as shown in Fig. 3k, in quantitative evaluation, the number of insulin granules in β -cells was significantly higher in KK-Ay mice treated with imeglimin compared to that without treatment. Furthermore, we evaluated the possible influence of imeglimin on the characteristics of insulin granules in more detail. As shown in Fig. 3l, the percentage of dense insulin granules was higher after the treatment with imeglimin compared to that without it in KK-Ay mice as observed in db/db mice. There was no difference in the percentage of gray, rod-shaped or empty insulin granules between with and without imeglimin treatment.

Favorable effects of chronic treatment with imeglimin on apoptotic β -cell death. Since it is well known that deterioration of β -cell function is closely associated with apoptotic β -cell death, we examined the effects of imeglimin on the percentage of β -cell apoptosis. First, to evaluate the effects of imeglimin on the ratio of apoptosis in β -cells, we performed TUNEL assay in type 2 diabetic db/db mice with and without 4-week treatment with imeglimin. As shown in Fig. 4a–f, in immunostaining with insulin and TUNEL, TUNEL-positive β -cells were more often observed in the mice without treatment with imeglimin compared to those with the treatment. Second, we performed quantitative evaluation about the percentage of TUNEL-positive β -cells and compared the percentage between with and without 4-week treatment with imeglimin. As shown in Fig. 4g, the percentage of TUNEL-positive β -cells was significantly lower in the mice treated with imeglimin compared to that without treatment.

Next, we evaluated expression levels of apoptosis-related genes in db/db mice after 4-week treatment with imeglimin. For example, it is well known that several caspases are closely associated with the process of apoptotic cell death. As shown in Fig. 4h,i, expression levels of caspase3 and caspase8 were all significantly lower in the mice treated with imeglimin compared to those without treatment. It is also known that IL-1 β , TNF- α , and NLRP-3 are involved in progression of inflammation and activation of inflammasome. As shown in Fig. 4j–l, expression levels of IL-1 β , TNF- α , and NLRP-3 were all significantly lower in the mice treated with imeglimin compared to those without treatment. It is also known that oxidative stress brings about apoptotic cell death. Therefore, we finally evaluated markers of oxidative stress which can induce apoptotic β -cell death. As shown in Fig. 4m–n, level of urinary 8-OHdG was lower in diabetic db/db mice treated with imeglimin compared to those without treatment. Taken together, it is likely that imeglimin reduces apoptotic β -cell death, at least in part, by suppressing inflammation and/or oxidative stress.

Discussion

In this study, we examined the effect of imeglimin, a new anti-diabetic drug, on pancreatic β -cells using type 2 diabetic mice. First, single-dose administration of imeglimin directly enhanced insulin secretion from β -cells in several models such as type 2 diabetic db/db mice and islets isolated from non-diabetic db/m mice. In addition, imeglimin augmented insulin secretion under a high glucose concentration, but not in a low glucose concentration (Fig. 1c), suggesting that imeglimin enhances insulin secretion in a glucose concentration-dependent

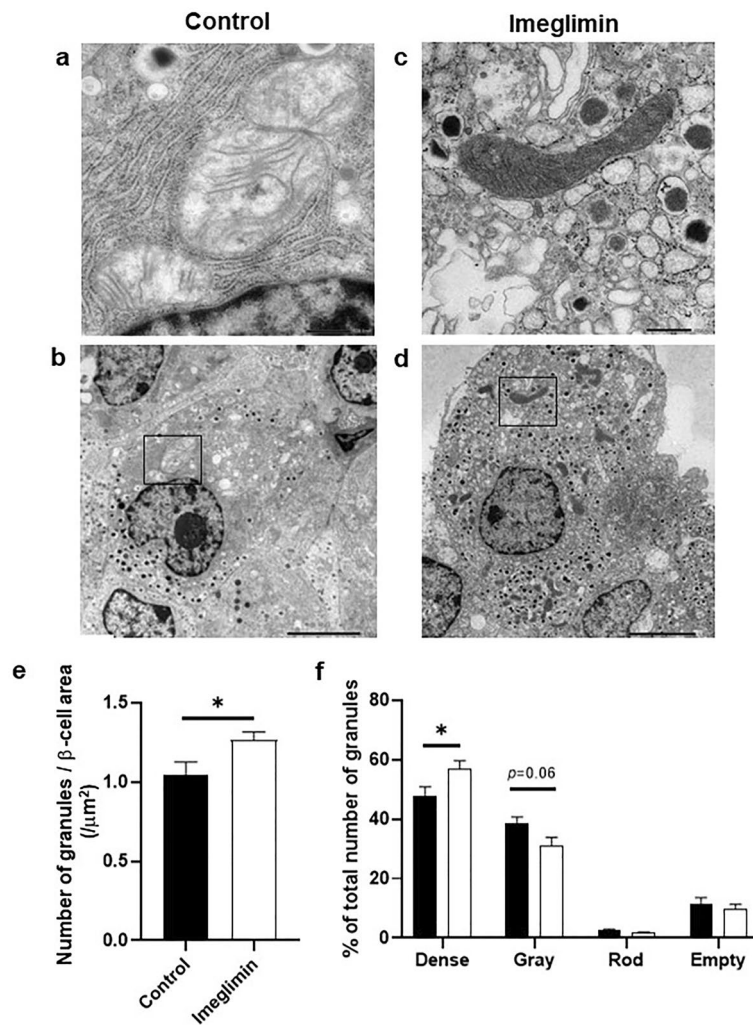


Figure 3. Effects of chronic administration of imeglimin on mitochondrial morphology and the number of insulin granules in β -cells in type 2 diabetic db/db and KK-Ay mice. (a–d) The mitochondria in β -cells in db/db mice appeared to be swollen and crista structure inside mitochondria was disrupted, which was not observed in db/db mice treated with imeglimin. In addition, the number of insulin granules was preserved in db/db mice treated with imeglimin compared to that without the treatment. (e) Quantitative evaluation of the number of insulin granules in β -cells in db/db mice after 4-week treatment with imeglimin. The number of insulin granules in β -cells was significantly higher in the mice treated with imeglimin compared to that without the treatment. (f) Quantitative evaluation of insulin secretory granules according to the core; dense, gray, rod-shaped, or empty. (g–j) The mitochondria in β -cells in KK-Ay mice also appeared to be swollen and crista structure was disrupted, which was not observed in KK-Ay mice treated with imeglimin. In addition, the number of insulin granules was preserved in KK-Ay mice treated with imeglimin. (k) Quantitative evaluation about the number of insulin granules in β -cells in KK-Ay mice after 4-week treatment with imeglimin. (l) Quantitative evaluation of insulin secretory granules according to the core; dense, gray, rod-shaped, or empty ($n=4-8$). Values are the mean \pm SEM of data obtained from each group. * $p < 0.05$. Bar: 0.5 μm (a, c, g, i), 5.0 μm (b, d, h, j).

manner. Second, chronic treatment with imeglimin enhanced insulin secretory capacity and ameliorated glycaemic control in type 2 diabetic db/db mice. Third, evaluation with electron microscopy clearly demonstrated for the first time that imeglimin showed favorable effects on morphology in β -cell mitochondria and substantially increased the number of insulin granules in β -cells. Fourth, imeglimin significantly reduced apoptotic β -cell death together with suppression of apoptosis- and/or inflammation-related gene expression levels and reduction of oxidative stress.

Based on the findings in this study, we think that imeglimin has the following functions in β -cells, namely enhancement of insulin secretion, preservation of the number of insulin granules, recovery of morphology in mitochondria, and reduction of apoptosis. One function of imeglimin is to directly enhance insulin secretion from β -cells. We assume that such enhancement of insulin secretion is presumably due to an increase in intracellular calcium level by imeglimin¹⁷. Another function is to increase the number of insulin granules in β -cells. It seems that there is some association between these two functions, because it is likely that when the number of

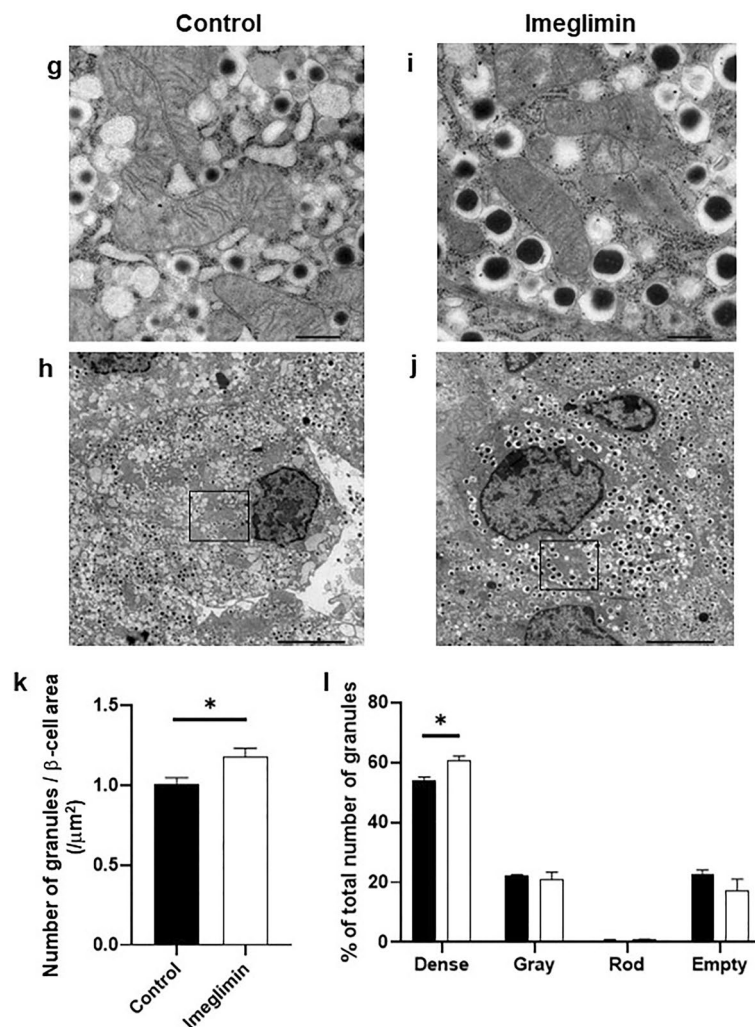


Figure 3. (continued)

insulin granules is preserved in β -cells, imeglimin can more easily facilitate insulin secretion. Another function is to recover the morphological change in β -cell mitochondria. We think that such phenomena are also involved in the above-mentioned functions in β -cells, because recovery of morphological change in β -cell mitochondria likely facilitates ATP production and thereby enhances insulin biosynthesis and secretion. Another function is to reduce apoptotic β -cell death. We think that reduced β -cell apoptosis is presumably due to decreased expression levels of various apoptosis- and/or inflammation-related factors such as several kinds of caspases, inflammatory cytokines, and NLRP-3. Also, we think that decrease of oxidative stress by imeglimin, at least in part, leads to reduction of β -cell apoptotic cell death. In addition, it seems that there is also some association between the reduction of apoptotic β -cell death by imeglimin and the above-mentioned deterioration of β -cell function. It is likely that when apoptotic β -cell death is induced, it is difficult for β -cells to preserve insulin biosynthesis and secretion. Further study would be necessary to unveil the precise association among the above-mentioned effects of imeglimin on β -cells, namely enhancement of insulin secretion, preservation of the number of insulin granules, recovery of morphology in mitochondria, and reduction of apoptosis.

In addition, it is thought that imeglimin shows beneficial effects on insulin target organs such as the liver. Indeed, it was reported that imeglimin improved insulin sensitivity and suppressed glycogenesis presumably due to reduction of triglyceride content, reduction of oxidative stress, and enhancement of mitochondria function in the liver²⁰. Therefore, imeglimin exerts protective effects against insulin resistance as well as insufficient insulin secretion both of which are main characteristics of type 2 diabetes mellitus. Such dual effects of imeglimin are promising from the point of glucose toxicity. Under diabetic conditions, when β -cells are chronically exposed to hyperglycemia, β -cell function gradually deteriorates, which progressively reduces insulin biosynthesis and secretion. Such phenomena are known as glucose toxicity. In addition, glucose toxicity is involved in the development of insulin resistance by suppressing insulin signaling in insulin target organs. We assume that imeglimin helps to get out vicious cycle of glucose toxicity. When imeglimin enhances insulin secretion, blood glucose levels are decreased, and glycemic control is improved. Such improvement of glycemic control reduces glucose toxicity and thus mitigates insulin resistance by improving insulin signaling in insulin target organs. Conversely, when imeglimin improves insulin sensitivity in insulin target organs, excess insulin secretion from β -cells would be

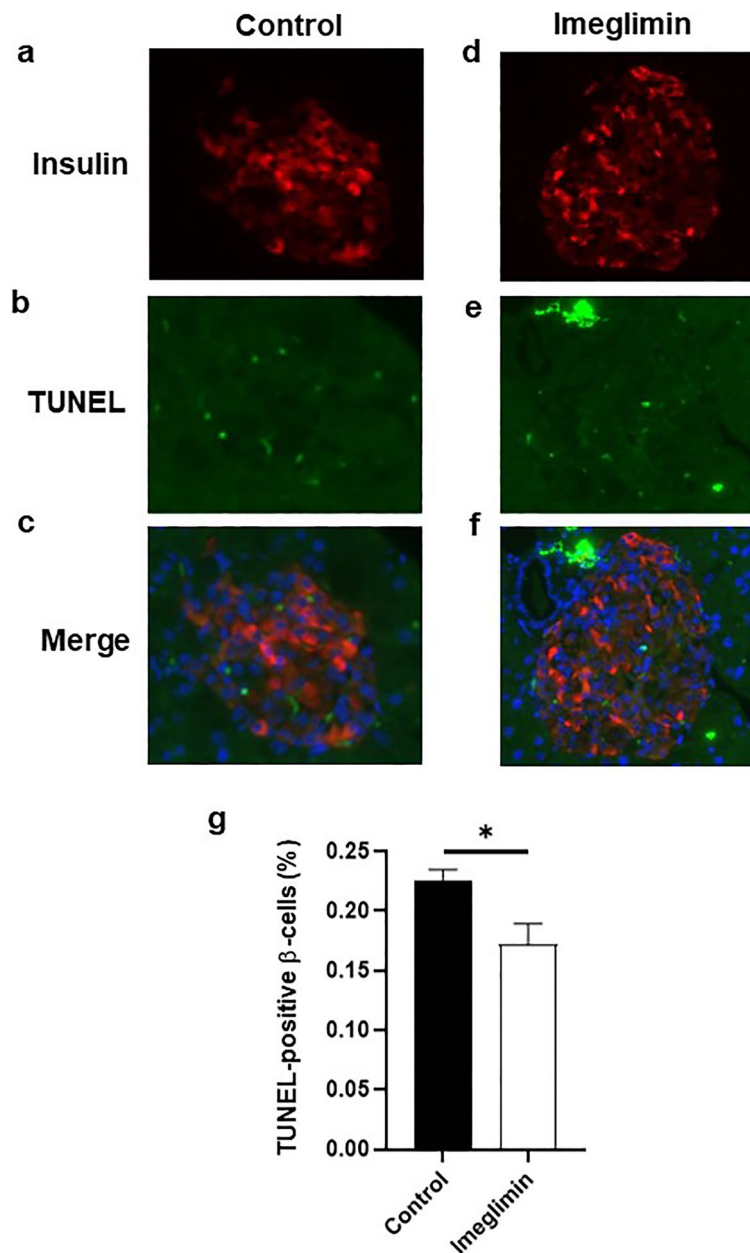


Figure 4. Effects of chronic administration of imeglimin on apoptosis in pancreatic β -cells in obese type 2 diabetic db/db mice. (a–f) In immunostaining with insulin and TUNEL, TUNEL-positive β -cells were more often observed in the mice without treatment with imeglimin compared to those with the treatment. (g) Quantitative evaluation about the effects of imeglimin on the percentage of TUNEL-positive β -cells ($n=5-6$). (h–l) Expression levels of apoptosis- and inflammation-related genes in db/db mice after 4-week treatment with imeglimin. Expression levels of caspases, inflammatory cytokines and NLRP-3 were all significantly lower in the mice treated with imeglimin ($n=9$). (m–n) Effects of imeglimin on oxidative stress in db/db mice. Level of urinary 8-OHdG was lower in diabetic db/db mice treated with imeglimin compared to those without the treatment ($n=4-5$). Values are the mean \pm SEM of data obtained from each group. * $p < 0.05$.

reduced. Under such conditions, β -cell overwork is reduced, and thus β -cell function can be recovered. Therefore, we think that the dual function of imeglimin is promising from the point of glucose toxicity.

There is a limitation in this study. First, the precise mechanism by which imeglimin enhanced glucose-stimulated insulin secretion in this study remains unclear. It has been recently reported, however, that imeglimin increases intracellular calcium concentration through the influx of calcium from the endoplasmic reticulum as well as from the outside of β -cells¹⁷. Therefore, we assume that the increase in intracellular calcium concentration is involved in the facilitation of insulin secretion by imeglimin. Second, the mechanism by which imeglimin improved β -cell mitochondrial function in this study also remains unclear. It has been shown, however, that imeglimin inactivates respiratory chain complex I and conversely activates complex III in mitochondria, which

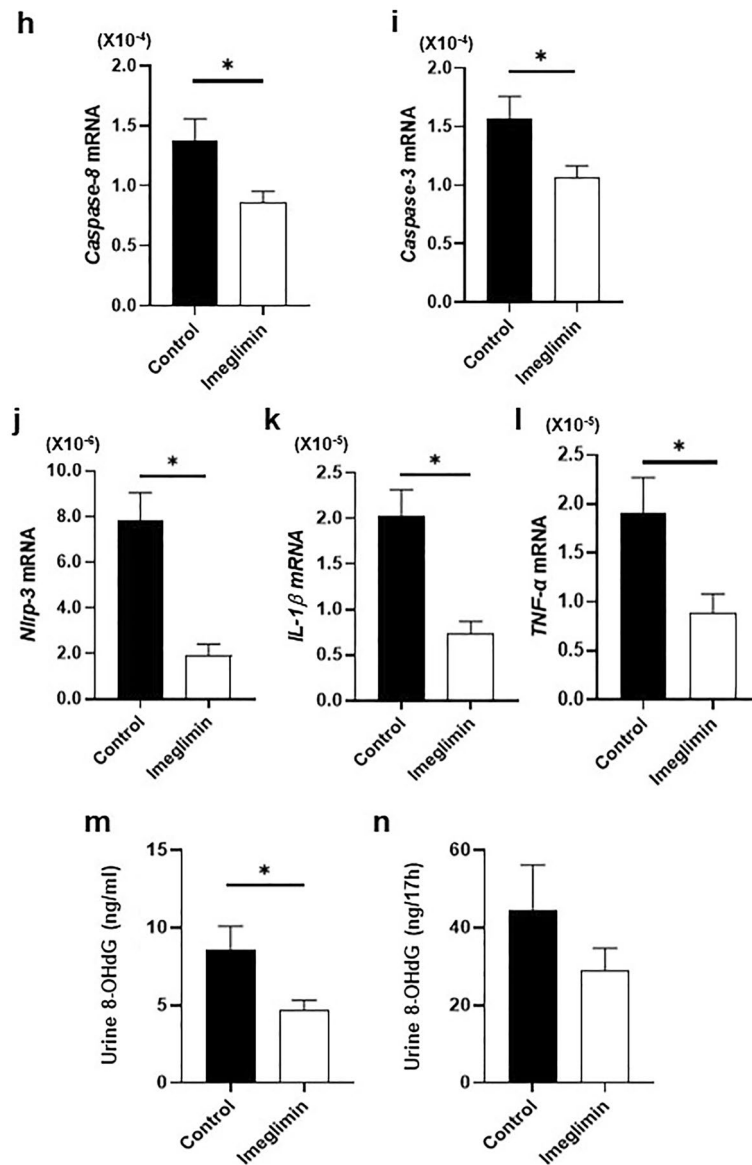


Figure 4. (continued)

can lead to mitigate the excess production of reactive oxygen species²⁰. Therefore, we assume that the alteration of respiratory chain complex situations is involved in the improvement of mitochondrial function by imeglimin. Finally, while metformin is very frequently used in clinical practice as one of insulin sensitizers, imeglimin is a compound which is modified from metformin and thus is expected to exert favorable effect on insulin sensitivity. Indeed, as described above, imeglimin suppresses glycogenesis in the liver and improves insulin sensitivity²⁰. Therefore, it seems that the improvement of insulin sensitivity by imeglimin also contributes to the protection of β -cell function by reducing the excess biosynthesis and/or secretion of insulin from β -cells and thereby mitigating β -cell overwork and debilitation which is often observed under chronic hyperglycemic conditions.

In addition, in this study we used relatively young diabetic mice, which are thought to show rather hyperplastic stage of islets. It is known, however, that this diabetic model shows substantial debilitation of β -cell function and reduction of β -cell mass with increasing age. Considering that most diabetic patients are relatively elder in clinical practice, we think that it would be very important to examine whether imeglimin can show similar favorable effects on β -cells even at an advance stage of diabetes. Indeed, it was reported that several anti-diabetic drugs such as incretin-related drugs and sodium-glucose cotransporter 2 inhibitors showed favorable effects on β -cells at an early stage of diabetes but that such phenomena were not observed at an advanced stage^{24–26}. Therefore, it is possible that the effects of imeglimin would be weakened at an advanced stage. In consideration of all things, it would be safe to conclude at this moment that imeglimin shows substantial favorable effects on β -cells at least when it is used at an early stage of diabetes.

In conclusion, imeglimin directly enhances insulin secretion from β -cells, increases the number of insulin granules, exerts beneficial effects on morphology in β -cell mitochondria, and reduces β -cell apoptosis in type 2 diabetic mice, which finally leads to enhancement of glucose-stimulated insulin secretion and amelioration of

glycemic control. While the number of subjects with type 2 diabetes mellitus has been increasing worldwide, it has become possible very recently that we can prescribe imeglimin in clinical practice. Clinical trials with imeglimin in type 2 diabetic patients have also recently shown its efficacy and safety of long-term therapy and its effectiveness of combination with other oral anti-diabetic drugs or insulin therapy. Therefore, we hope that the findings in this report would provide useful information to many clinicians as well as researchers that imeglimin would be promising in diabetes care especially for the enhancement of pancreatic β -cell function.

Materials and methods

Animals. We used 7-week-old male KK-Ay/TaJcl (KK-Ay) mice, BKS. Cg-m^{+/+} Lepr db/Jcl (db/m) mice and BKS.Cg- + Lepr db/ + Lepr db/Jcl (db/db) mice that were purchased from Clea, Tokyo, Japan. Animals were housed under controlled ambient conditions and 12 h light and dark cycle. They were given free access to water and standard diet (MF; Oriental Yeast Co., Ltd.) and maintained at 25 °C. They were treated with imeglimin (200 mg/kg, twice daily oral gavage) or 0.5% carboxymethyl cellulose (CMC) for 4 weeks. Imeglmin was kindly provided by Sumitomo Pharma. The drug dose was set based on a previous report²⁰. Body weights, food intake and water intake were measured every week until the end of experiment. The study was approved by the animal use committee of Kawasaki Medical School (NO.19-103) and conducted in compliance with the animal use guidelines of Kawasaki Medical School.

Measurement of biochemical markers. Blood samples were collected from tail vein, and blood glucose levels were measured using a glucometer (Glutest Mint; Sanwa Kagaku Kenkyusho Co, Ltd, Japan) every week. Serum total cholesterol and triglyceride were measured enzymatically using the Wako LabAssay (Wako Pure Chemical Industries, Japan). Urine was collected using metabolic cage at 11 weeks age, and levels of 8-OHdG were measured using ELISA kit (Japan Institute for the Control of Aging, NIKKEN SEIL Co, Ltd, Japan).

Oral glucose tolerance test (OGTT). After 16 h fasting, animals were given a single dose of imeglimin, and D-(+)-glucose (1 g/kg BW) was administered orally for OGTT at 7 weeks old. We performed OGTT again after 4-week treatment with imeglimin. Blood samples were collected at 0, 15, 30, 60, 90 and 120 min and blood glucose levels were measured using Glutest Mint. Serum insulin levels were determined using a mouse insulin ELISA kit (Morinaga, Tokyo, Japan). The experiment was conducted in accordance with the previous report²⁶.

Insulin tolerance test (ITT). Insulin tolerance test was performed by intraperitoneal injection (db/db mice 2 U/kg BW, KK-Ay mice 1 U/kg BW) of human regular insulin (Novo Nordisk, Bagsvaerd, Denmark) after 5-h fasting. Blood glucose levels were monitored at 0, 15, 30, 60, 90, 120 min after insulin injection.

Pancreatic islet isolation. Isolation of islets from the pancreas of the mice was conducted as previously described²⁷. In brief, islets were isolated after clamping the common bile duct at its entrance to the duodenum. 2.5 ml of Hanks' Balanced Salt Solution (HBSS) (Sigma, St Louis, MO, USA) containing 0.6 mg Liberase TL (Roche Diagnostics, Tokyo, Japan) and 25 mmol/l HEPES was injected into the duct. The swollen pancreas was removed and incubated at 37 °C for 24 min. The pancreatic tissue was then dispersed by pipetting and washed twice with ice-cold HBSS containing 25 mmol/l HEPES and 10% (wt/vol.) FBS. Thereafter, the islets were manually picked up under a stereoscopic microscope and used immediately for the experiments.

Glucose stimulated insulin secretion (GSIS). Size matched pancreatic islets isolated from mice were prepared (five pancreatic islets/tube) and pre-incubated in HEPES buffer. The supernatant fraction was replaced with glucose solution (either 3 mmol/l or 16.7 mmol/l) and the mixture was incubated for additional 60 min at 37 °C as previously reported^{26,27}. The supernatant fraction and islets were stored at - 80 °C until use.

Immunofluorescence. According to the previously established method^{10,11}, isolated pancreases were fixed overnight with formaldehyde at 4 °C. Tissues were routinely processed for paraffin embedding and 4 μ m sections were cut and mounted on silanized slides. To investigate cell apoptosis in pancreatic islets, TUNEL assay was performed using a DeadEnd Fluorometric TUNEL System (DeadEnd, Promega, Madison, WI, USA).

Electron microscopy. Isolated islets were fixed for 2 h in 2.5% (vol./vol.) glutaraldehyde buffered to pH 7.4 with phosphate buffer and treated with osmium tetroxide for 1 h at 4 °C. The tissues were dehydrated with graded concentration ethanol and then embedded in Epon 812 (Nakarai, Kyoto, Japan). Thin sections were cut with a Leica Ultracut S (Leica Microsystems, Tokyo, Japan) with a diamond knife and stained with uranyl acetate followed by lead citrate²⁸. Electron micrographs were taken with a JEOL JEM-1400 electron microscope (JEOL, Tokyo, Japan) operated at 80 kV. Dense core, light core (gray), atypical (rod-shaped) and empty granules were manually counted and quantified²⁹. Number of granule/ β -cell area ($/\mu\text{m}^2$) = (dense granules + gray granules)/ β -cell area.

Morphometric analysis. The image analysis software NIH Image (version 1.61; <http://rsbweb.nih.gov/ij/>) was used to calculate the pancreas area and islet area. Using a total of nine sections (three sections from three different areas of the pancreas) for each group of mice, islet mass was estimated via the following formula: mass (mg) = average of islet area per section / average of pancreas area per section \times weight of pancreas.

RNA isolation and real time PCR. Pancreatic islets isolated from mice treated with imeglimin were incubated with 1 mM imeglimin for 24 h. Total RNA extraction was performed using an RNeasy Mini kit (QIAGEN, Valencia, CA) according to the manufacturer's instructions. cDNA was produced from mRNA using TaqMan reverse transcription reagents (Applied Biosystems, Foster City, CA). Quantitative RT-PCR was conducted using a StepOne Real-Time PCR system (Applied Biosystems). To quantify gene expression, the $2^{-\Delta\Delta CT}$ was calculated using 18-sr as an internal control. Primer sequences used for real time PCR are presented in Supplementary Table 1.

Statistical analysis. All data were analyzed and expressed as the mean \pm standard error of the mean. Differences between two groups were tested for statistical significance using Student's t-test. p values less than 0.05 were considered to indicate a statistically significant difference.

Declaration of study performance. The study is reported in accordance with ARRIVE guidelines.

Data availability

The datasets generated and/or analyzed during the current study are available from the corresponding author upon reasonable request.

Received: 6 May 2022; Accepted: 28 July 2022

Published online: 02 August 2022

References

- World Health Organization. *Global Report on Diabetes* (World Health Organization, 2016).
- Kaneto, H. *et al.* Appropriate therapy for type 2 diabetes in view of pancreatic β -cell glucose toxicity: "The earlier, the better". *J. Diabetes* **8**, 183–189. <https://doi.org/10.1111/1753-0407.12331> (2016).
- Butler, A. E. *et al.* Beta-cell deficit and increased beta-cell apoptosis in humans with type 2 diabetes. *Diabetes* **52**, 102–110. <https://doi.org/10.2337/diabetes.52.1.102> (2003).
- Matveyenko, A. V. & Butler, P. C. Relationship between beta-cell mass and diabetes onset. *Diabetes Obes. Metab.* **10**(Suppl 4), 23–31. <https://doi.org/10.1111/j.1463-1326.2008.00939.x> (2008).
- Masters, S. L. *et al.* Activation of the NLRP3 inflammasome by islet amyloid polypeptide provides a mechanism for enhanced IL-1 β in type 2 diabetes. *Nat. Immunol.* **11**, 897–904. <https://doi.org/10.1038/ni.1935> (2010).
- Ehses, J. A. *et al.* Increased number of islet-associated macrophages in type 2 diabetes. *Diabetes* **56**, 2356–2370. <https://doi.org/10.2337/db06-1650> (2007).
- Drews, G., Krippeit-Drews, P. & Düfer, M. Oxidative stress and beta-cell dysfunction. *Pflugers Arch.* **460**, 703–718. <https://doi.org/10.1007/s00424-010-0862-9> (2010).
- Engin, F., Nguyen, T., Yermalovich, A. & Hotamisligil, G. S. Aberrant islet unfolded protein response in type 2 diabetes. *Sci. Rep.* **4**, 4054. <https://doi.org/10.1038/srep04054> (2014).
- Bugliani, M. *et al.* DPP-4 is expressed in human pancreatic beta cells and its direct inhibition improves beta cell function and survival in type 2 diabetes. *Mol. Cell Endocrinol.* **473**, 186–193. <https://doi.org/10.1016/j.mce.2018.01.019> (2018).
- Okauchi, S. *et al.* Protective effects of SGLT2 inhibitor luseogliflozin on pancreatic β -cells in obese type 2 diabetic db/db mice. *Biochem. Biophys. Res. Commun.* **470**, 772–782. <https://doi.org/10.1016/j.bbrc.2015.10.109> (2016).
- Hamamoto, S. *et al.* Vildagliptin preserves the mass and function of pancreatic β cells via the developmental regulation and suppression of oxidative and endoplasmic reticulum stress in a mouse model of diabetes. *Diabetes Obes. Metab.* **15**, 153–163. <https://doi.org/10.1111/dom.12005> (2013).
- Kimura, T. *et al.* Durability of protective effect of dulaglutide on pancreatic β -cells in diabetic mice: GLP-1 receptor expression is not reduced despite long-term dulaglutide exposure. *Diabetes Metab.* **44**, 250–260. <https://doi.org/10.1016/j.diabet.2017.10.007> (2018).
- Dubourg, J., Fouqueray, P., Thang, C., Grouin, J. M. & Ueki, K. Efficacy and safety of imeglimin monotherapy versus placebo in Japanese patients with type 2 diabetes (TIMES 1): A double-blind, randomized, placebo-controlled, parallel-group, multicenter phase 3 trial. *Diabetes Care* **44**, 952–959. <https://doi.org/10.2337/dc20-0763> (2021).
- Dubourg, J., Fouqueray, P., Quinslot, D., Grouin, J. M. & Kaku, K. Long-term safety and efficacy of imeglimin as monotherapy or in combination with existing antidiabetic agents in Japanese patients with type 2 diabetes (TIMES 2): A 52-week, open-label, multicentre phase 3 trial. *Diabetes Obes. Metab.* **24**, 609–619. <https://doi.org/10.1111/dom.14613> (2022).
- Reilhac, C. *et al.* Efficacy and safety of imeglimin add-on to insulin monotherapy in Japanese patients with type 2 diabetes (TIMES 3): A randomized, double-blind, placebo-controlled phase 3 trial with a 36-week open-label extension period. *Diabetes Obes. Metab.* **24**, 838–848. <https://doi.org/10.1111/dom.14642> (2022).
- Perry, R. J. *et al.* Imeglimin lowers glucose primarily by amplifying glucose-stimulated insulin secretion in high-fat-fed rodents. *Am. J. Physiol. Endocrinol. Metab.* **311**, E461–470. <https://doi.org/10.1152/ajpendo.00009.2016> (2016).
- Hallakou-Bozec, S., Kergoat, M., Fouqueray, P., Bolze, S. & Moller, D. E. Imeglimin amplifies glucose-stimulated insulin release from diabetic islets via a distinct mechanism of action. *PLoS ONE* **16**, e0241651. <https://doi.org/10.1371/journal.pone.0241651> (2021).
- Hallakou-Bozec, S., Kergoat, M., Moller, D. E. & Bolze, S. Imeglimin preserves islet β -cell mass in Type 2 diabetic ZDF rats. *Endocrinol. Diabetes Metab.* **4**, e00193. <https://doi.org/10.1002/edm2.193> (2021).
- Li, J. *et al.* Imeglimin ameliorates β -cell apoptosis by modulating the endoplasmic reticulum homeostasis pathway. *Diabetes* **71**, 424–439. <https://doi.org/10.2337/db21-0123> (2022).
- Vial, G. *et al.* Imeglimin normalizes glucose tolerance and insulin sensitivity and improves mitochondrial function in liver of a high-fat, high-sucrose diet mice model. *Diabetes* **64**, 2254–2264. <https://doi.org/10.2337/db14-1220> (2015).
- Hallakou-Bozec, S. *et al.* Mechanism of action of Imeglimin: A novel therapeutic agent for type 2 diabetes. *Diabetes Obes. Metab.* **23**, 664–673. <https://doi.org/10.1111/dom.14277> (2021).
- Kitakata, H. *et al.* Imeglimin prevents heart failure with preserved ejection fraction by recovering the impaired unfolded protein response in mice subjected to cardiometabolic stress. *Biochem. Biophys. Res. Commun.* **572**, 185–190. <https://doi.org/10.1016/j.bbrc.2021.07.090> (2021).
- Lachaux, M. *et al.* Short- and long-term administration of imeglimin counters cardiorenal dysfunction in a rat model of metabolic syndrome. *Endocrinol. Diabetes Metab.* **3**, e00128. <https://doi.org/10.1002/edm2.128> (2020).
- Kimura, T. *et al.* Protective effects of pioglitazone and/or liraglutide on pancreatic β -cells: Comparison of their effects between in an early and advanced stage of diabetes. *Mol. Cell Endocrinol.* **400**, 78–89. <https://doi.org/10.1016/j.mce.2014.11.018> (2015).

25. Kimura, T. *et al.* Protective effects of SGLT2 inhibitor luseogliflozin on pancreatic β -cells in obese diabetic db/db mice: The earlier and longer, the better. *Diabetes Obes. Metab.* **20**, 2442–2457. <https://doi.org/10.1111/dom.13400> (2018).
26. Fushimi, Y. *et al.* Early combination therapy of empagliflozin and linagliptin exerts beneficial effects on pancreatic β cells in diabetic db/db mice. *Sci. Rep.* **11**, 16120. <https://doi.org/10.1038/s41598-021-94896-w> (2021).
27. Obata, A. *et al.* Vascular endothelial PDK1 plays a pivotal role in the maintenance of pancreatic beta cell mass and function in adult male mice. *Diabetologia* **62**, 1225–1236. <https://doi.org/10.1007/s00125-019-4878-1> (2019).
28. Iwashita, N. *et al.* Impaired insulin secretion in vivo but enhanced insulin secretion from isolated islets in pancreatic beta cell-specific vascular endothelial growth factor-A knock-out mice. *Diabetologia* **50**, 380–389. <https://doi.org/10.1007/s00125-006-0512-0> (2007).
29. Wijesekara, N. *et al.* Beta cell specific ZnT8 deletion in mice causes marked defects in insulin processing, crystallization and secretion. *Diabetologia* **53**, 1656–1668. <https://doi.org/10.1007/s00125-010-1733-9> (2010).

Author contributions

J.S. performed the experiments and wrote the main manuscript text. A.O. performed guidance and supervision of the experiments. Y.F., T.K., M.S., T.I., Y.N., Y.O., Y.Y., S.N., T.M. and K.K. helped the experiments and/or participated in discussion. H.K. participated in discussion and reviewed the manuscript. All authors reviewed the manuscript and approved the submission of the final version of this manuscript.

Funding

This work was supported by Research Aid from Sumitomo Pharma and Research Project Grant from Kawasaki Medical School (No. R03-025 to H.K.).

Competing interests

H.K. has received honoraria for lectures, received scholarship grants, and received research grant from Novo Nordisk Pharma, Sanofi, Eli Lilly, Boehringer Ingelheim, Taisho Pharma, Sumitomo Pharma, Takeda Pharma, Ono Pharma, Daiichi Sankyo, Mitsubishi Tanabe Pharma, Kissei Pharma, MSD, AstraZeneca, Astellas, Novartis, Kowa, Abbott. K.K. has been an advisor to, received honoraria for lectures from, and received scholarship grants from Novo Nordisk Pharma, Sanwa Kagaku, Takeda, Taisho Pharma, MSD, Kowa, Sumitomo Pharma, Novartis, Mitsubishi Tanabe Pharma, AstraZeneca, Boehringer Ingelheim, Chugai, Daiichi Sankyo, Sanofi. The other authors declare no competing interests.

Additional information

Supplementary Information The online version contains supplementary material available at <https://doi.org/10.1038/s41598-022-17657-3>.

Correspondence and requests for materials should be addressed to H.K.

Reprints and permissions information is available at www.nature.com/reprints.

Publisher's note Springer Nature remains neutral with regard to jurisdictional claims in published maps and institutional affiliations.



Open Access This article is licensed under a Creative Commons Attribution 4.0 International License, which permits use, sharing, adaptation, distribution and reproduction in any medium or format, as long as you give appropriate credit to the original author(s) and the source, provide a link to the Creative Commons licence, and indicate if changes were made. The images or other third party material in this article are included in the article's Creative Commons licence, unless indicated otherwise in a credit line to the material. If material is not included in the article's Creative Commons licence and your intended use is not permitted by statutory regulation or exceeds the permitted use, you will need to obtain permission directly from the copyright holder. To view a copy of this licence, visit <http://creativecommons.org/licenses/by/4.0/>.

© The Author(s) 2022