

Figure 3c - part I

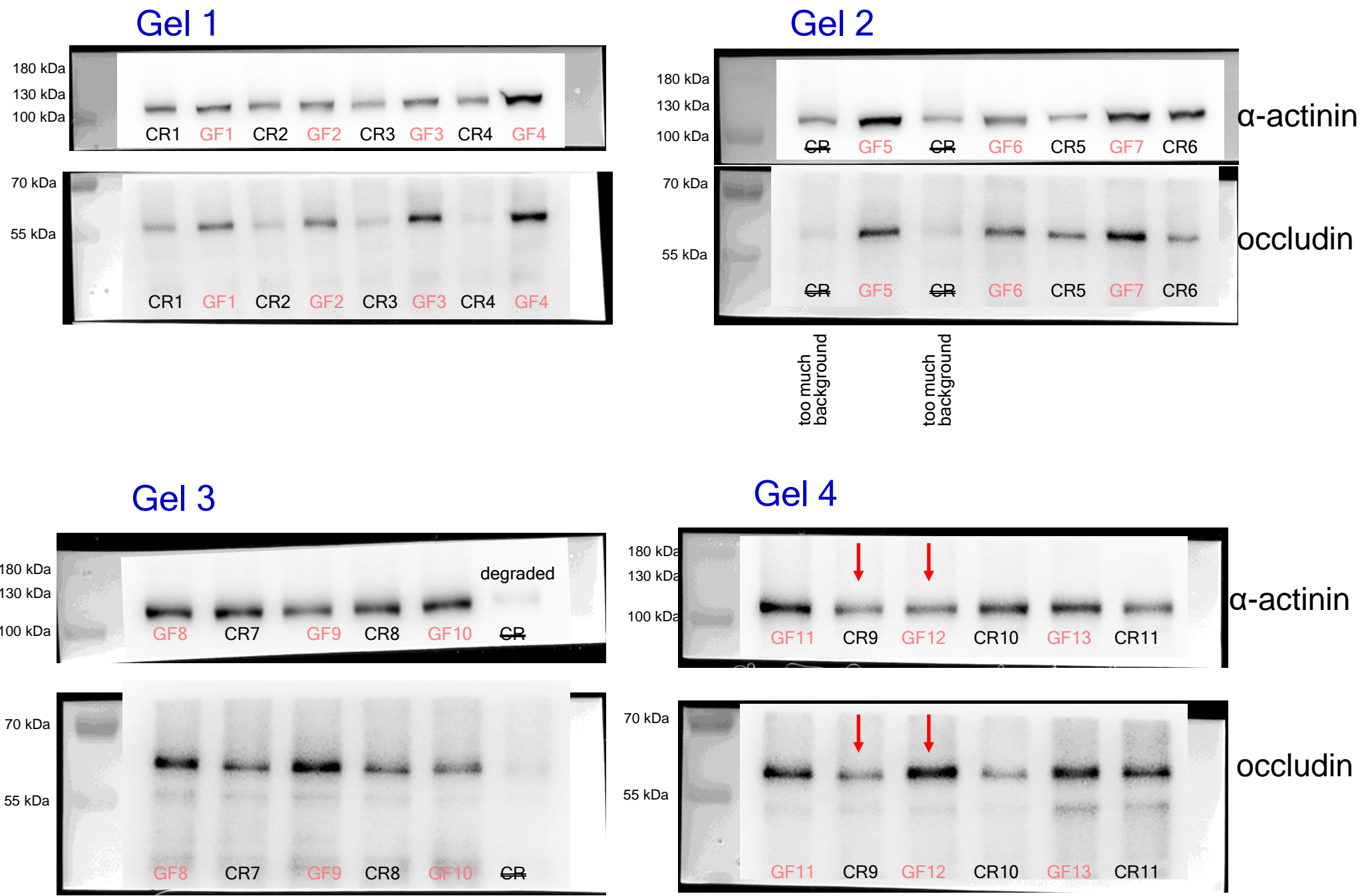
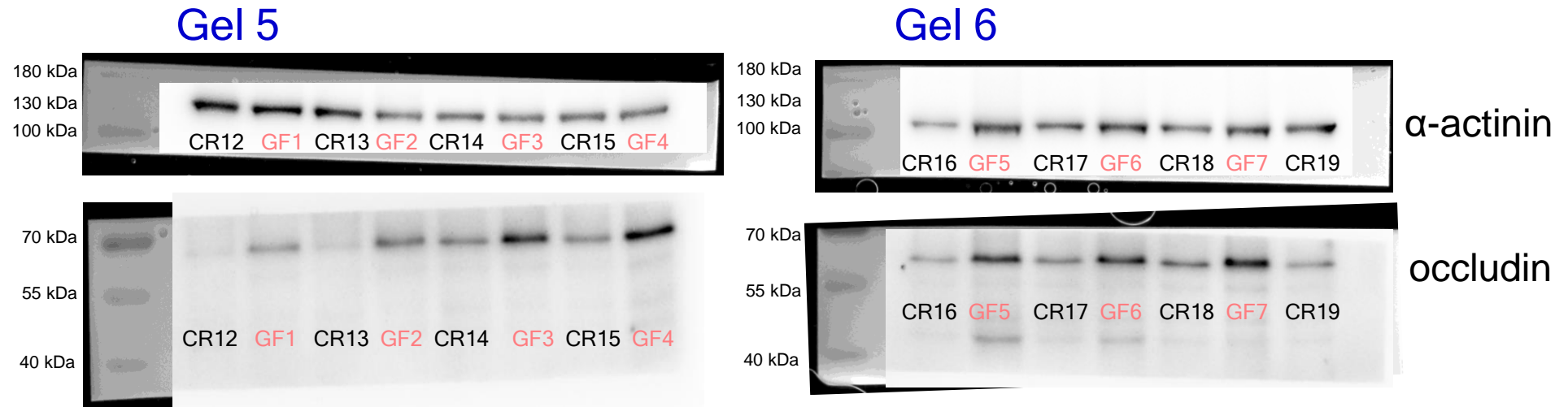


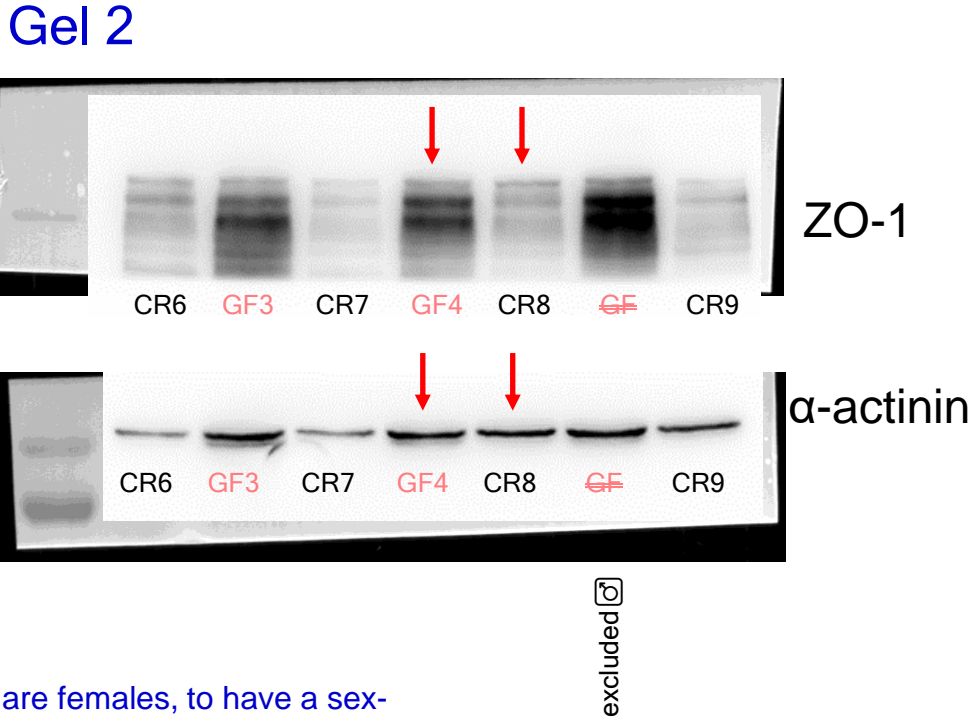
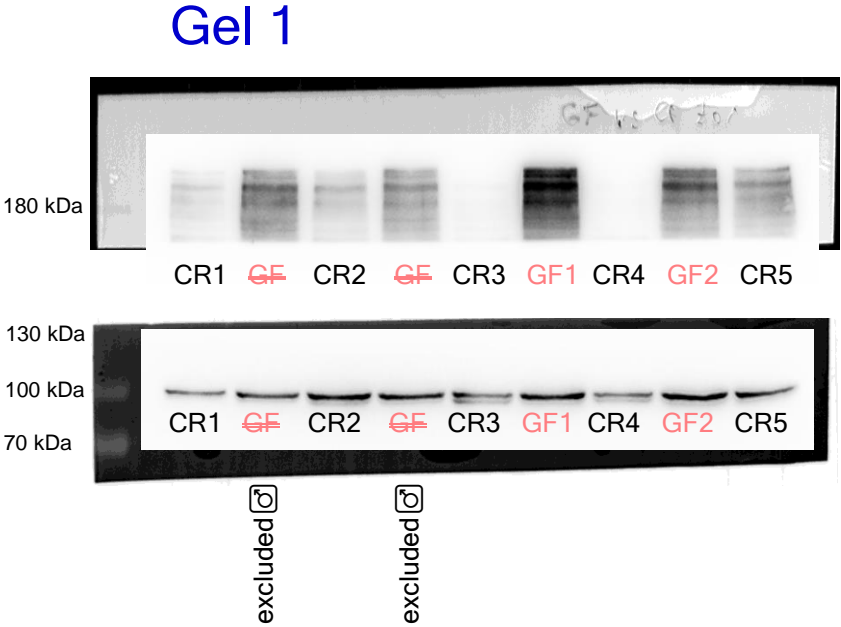
Figure 3c - part II



these GF mice are excluded from the graphs  
because they are the same biological samples of the Gel 1 and 2.

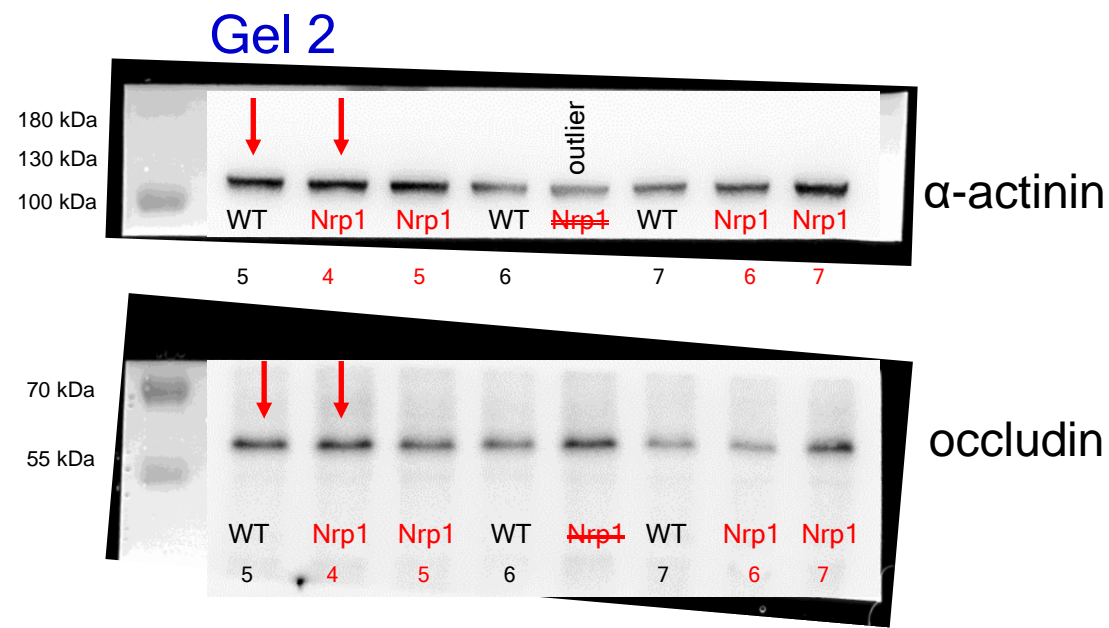
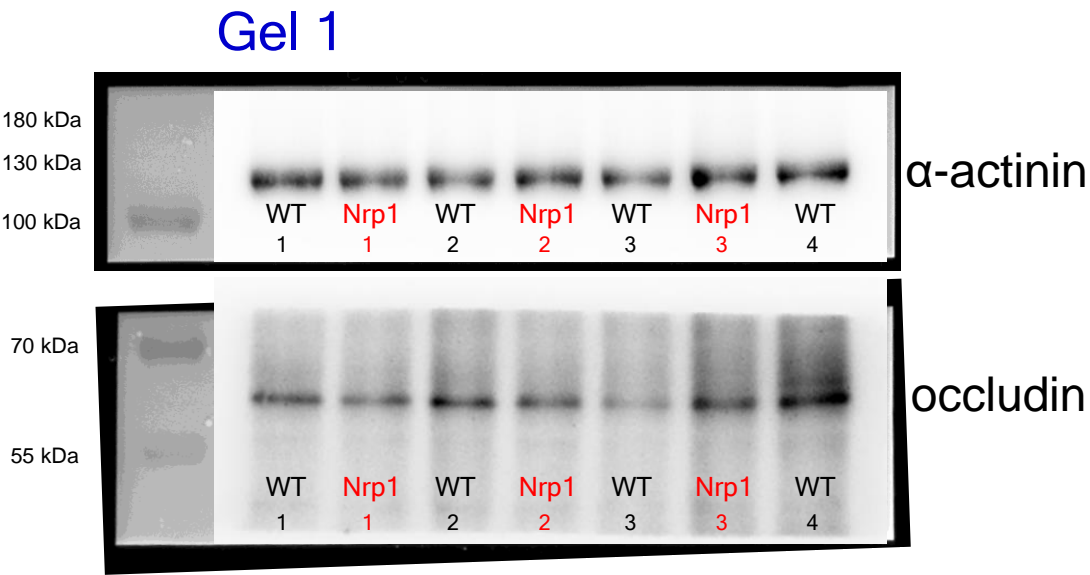
They were included only to normalize the values of CONV-R mice.

Figure 3d



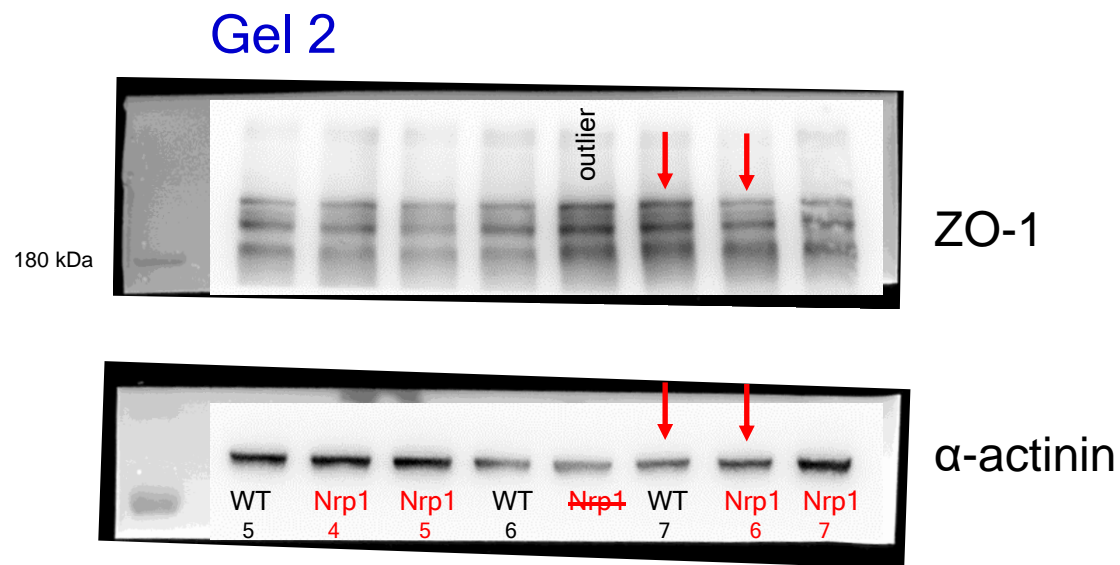
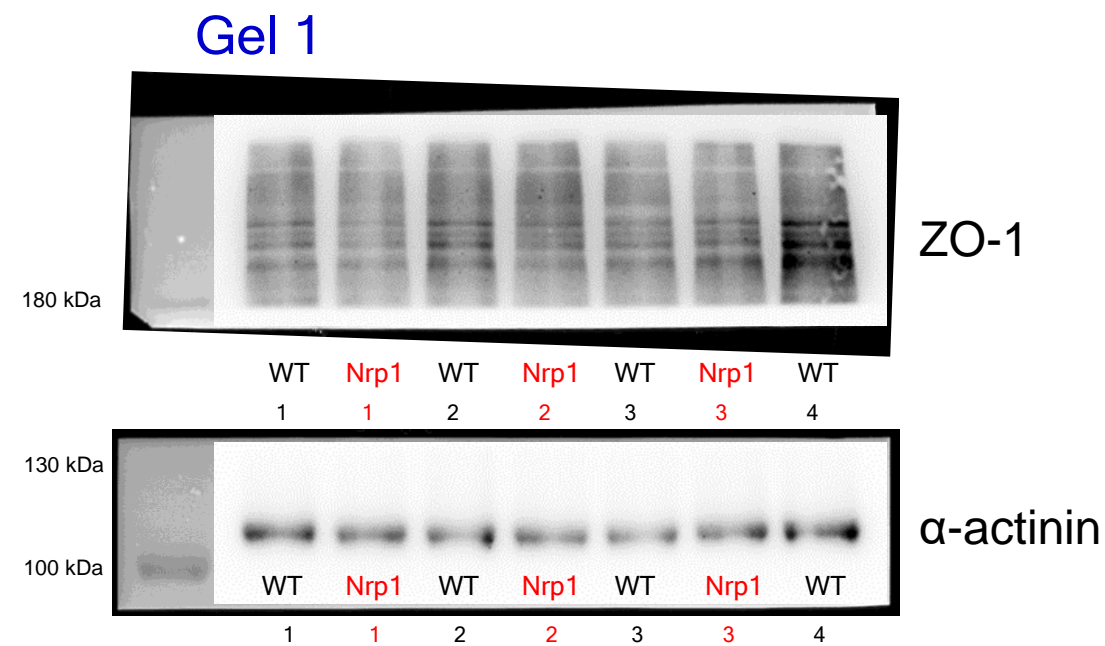
Since all the CONV-R mice are females, to have a sex-balanced group, GF male mice were excluded.

Figure 3k



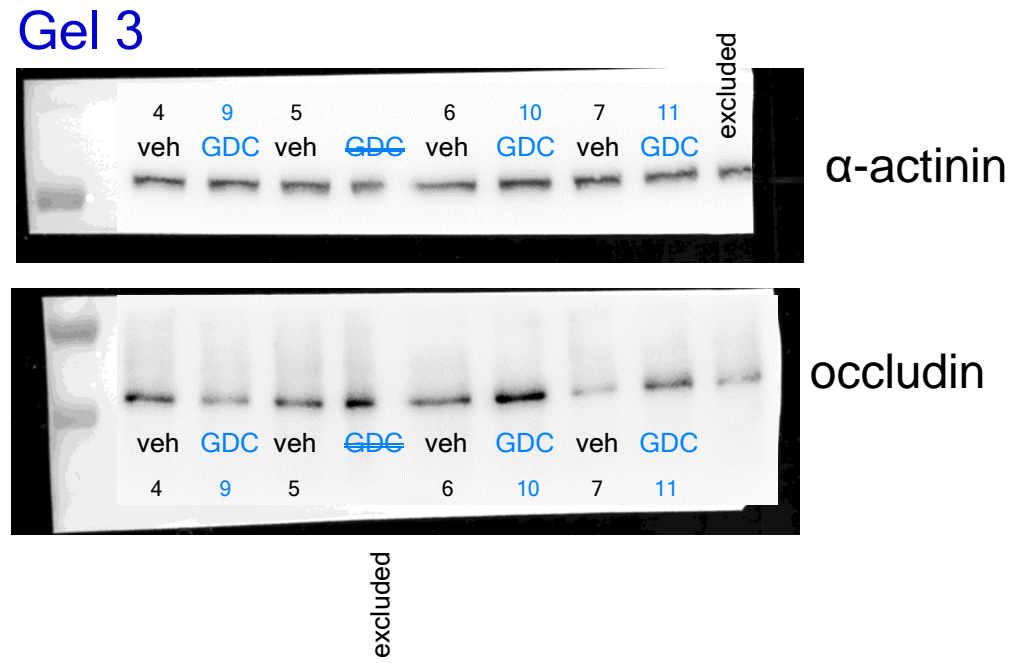
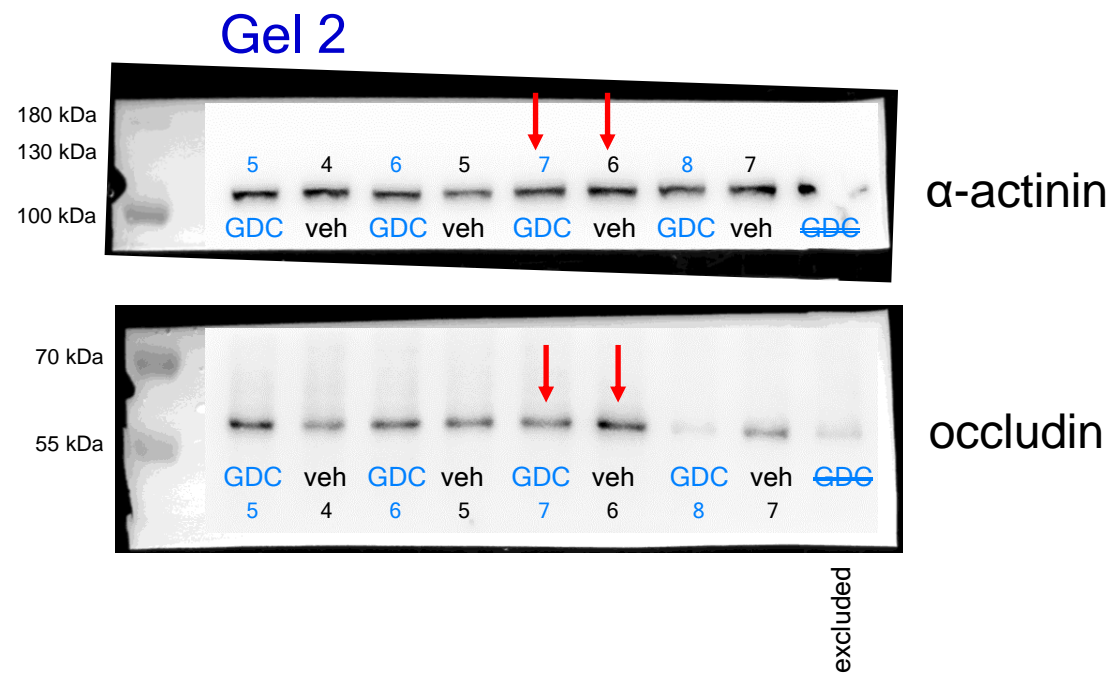
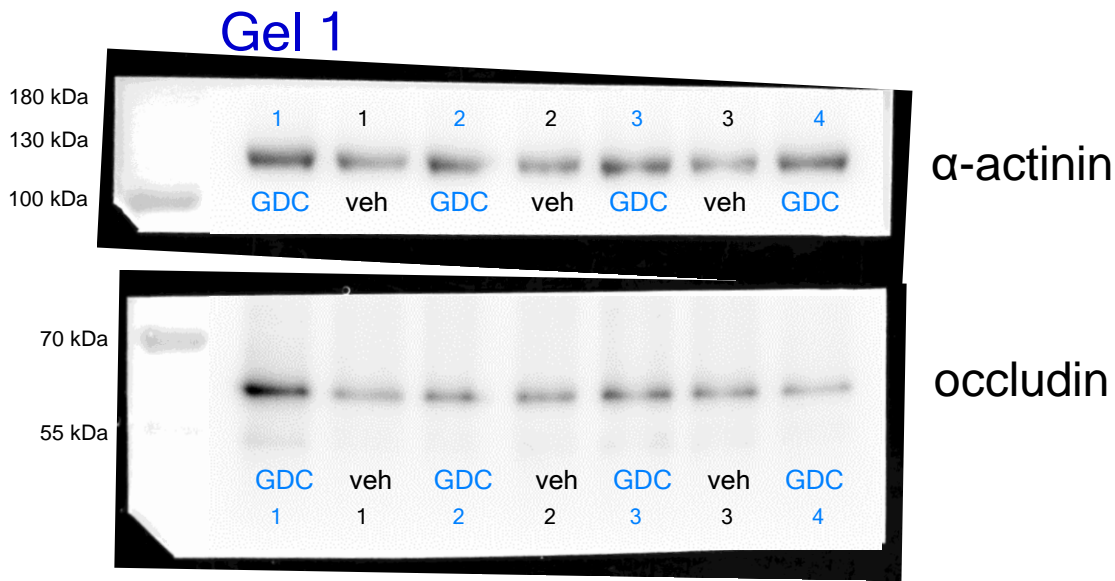
Since ZO-1 and occludin have different MW, the same gel was used for Figure 3k (Gel2, occludin) and Figure 3l (Gel2, ZO-1)

Figure 3l



Since ZO-1 and occludin have different MW, the same gel was used for Figure 3k (Gel2, occludin) and Figure 3l (Gel2, ZO-1)

Figure 3o

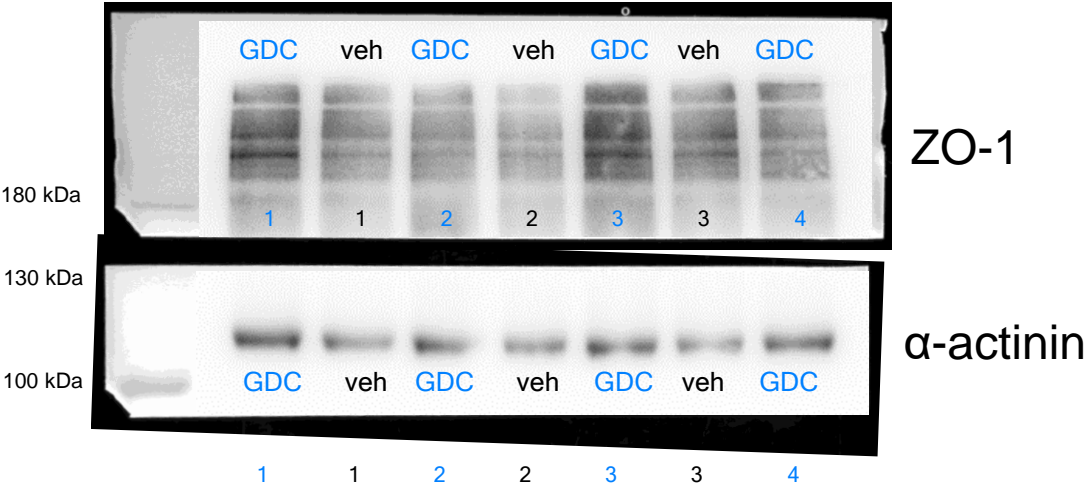


The vehicle from Gel 3 are the same as Gel 2.  
Therefore, they are used only for normalization  
and not in the quantification.



Figure 3p

Gel 1



Gel 2

