

RESEARCH ARTICLE

# Elective induction of labor at 39 weeks among nulliparous women: The impact on maternal and neonatal risk

Rachel G. Sinkey<sup>1\*</sup>, Jasmin Lacevic<sup>2</sup>, Tea Reljic<sup>2</sup>, Iztok Hozo<sup>3</sup>, Kelly S. Gibson<sup>4</sup>, Anthony O. Odibo<sup>5,6</sup>, Benjamin Djulbegovic<sup>7</sup>, Charles J. Lockwood<sup>5,6</sup>

**1** Department of Obstetrics and Gynecology, Division of Maternal-Fetal Medicine, University of Alabama at Birmingham, Birmingham, Alabama, **2** University of South Florida Health Program for Comparative Effectiveness Research, University of South Florida Morsani College of Medicine, Tampa, Florida, **3** Department of Mathematics, Indiana University Northwest, Gary, Indiana, **4** Department of Obstetrics and Gynecology, Division of Maternal-Fetal Medicine, MetroHealth Medical Center-Case Western Reserve University, Cleveland, Ohio, **5** Department of Obstetrics and Gynecology, Division of Maternal-Fetal Medicine, University of South Florida, Tampa, Florida, **6** Tampa General Hospital, Tampa, Florida, **7** Department of Supportive Care Medicine, City of Hope, Duarte, California

\* [rsinkey@uabmc.edu](mailto:rsinkey@uabmc.edu)



## Abstract

### Objective

Optimal management of pregnancies at 39 weeks gestational age is unknown. Therefore, we sought to perform a comparative effectiveness analysis of elective induction of labor (eIOL) at 39 weeks among nulliparous women with non-anomalous singleton, vertex fetuses as compared to expectant management (EM) which included IOL for medical or obstetric indications or at 41 weeks in undelivered mothers.

### Materials and methods

A Monte Carlo micro-simulation model was constructed modeling two mutually exclusive health states: eIOL at 39 weeks, or EM with IOL for standard medical or obstetrical indications or at 41 weeks if undelivered. Health state distribution probabilities included maternal and perinatal outcomes and were informed by a review of the literature and data derived from the Consortium of Safe Labor. Analyses investigating preferences for maternal versus infant health were performed using weighted utilities. Primary outcome was determining which management strategy posed less maternal and neonatal risk. Secondary outcomes were rates of cesarean deliveries, maternal morbidity and mortality, stillbirth, neonatal morbidity and mortality, and preferences regarding the importance of maternal and perinatal health.

### Results

A management strategy of eIOL at 39 weeks resulted in less maternal and neonatal risk as compared to EM with IOL at 41 weeks among undelivered patients. Cesarean section rates were higher in the EM arm (35.9% versus 13.9%,  $p < 0.01$ ). When analysis was performed

## OPEN ACCESS

**Citation:** Sinkey RG, Lacevic J, Reljic T, Hozo I, Gibson KS, Odibo AO, et al. (2018) Elective induction of labor at 39 weeks among nulliparous women: The impact on maternal and neonatal risk. *PLoS ONE* 13(4): e0193169. <https://doi.org/10.1371/journal.pone.0193169>

**Editor:** Roger C. Young, PreTeL, Inc, UNITED STATES

**Received:** October 6, 2017

**Accepted:** February 6, 2018

**Published:** April 25, 2018

**Copyright:** © 2018 Sinkey et al. This is an open access article distributed under the terms of the [Creative Commons Attribution License](https://creativecommons.org/licenses/by/4.0/), which permits unrestricted use, distribution, and reproduction in any medium, provided the original author and source are credited.

**Data Availability Statement:** All relevant data are within the paper and its Supporting Information files.

**Funding:** The authors received no specific funding for this work.

**Competing interests:** The authors have declared that no competing interests exist.

only on patients with an unfavorable cervix, 39 week eIOL still resulted in fewer cesarean deliveries as compared to EM (8.0% versus 26.1%,  $p < 0.01$ ). There was no statistical difference in maternal mortality (eIOL 0% versus EM 0.01%,  $p = 0.32$ ) but there was an increase in maternal morbidity among the EM arm (21.2% versus 16.5,  $p < 0.01$ ). There were more stillbirths (0.13% versus 0%,  $p < 0.0003$ ), neonatal deaths (0.25% versus 0.12%,  $p < 0.03$ ), and neonatal morbidity (12.1% versus 9.4%,  $p < 0.01$ ) in the EM arm as compared to the eIOL arm. Preference modeling revealed that 39 week eIOL was favored over EM.

## Conclusions and relevance

Mathematical modeling revealed that eIOL at 39 weeks resulted in lower population risks as compared to EM with induction of labor at 41 weeks. Specifically, eIOL at 39 weeks resulted in a lower cesarean section rate, lower rates of maternal morbidity, fewer stillbirths and neonatal deaths, and lower rates of neonatal morbidity.

## Introduction

Timing of delivery is a vital component of a healthy pregnancy. An increase in morbidity and mortality exists on both ends of the gestational age at delivery spectrum. On one hand, preterm birth is the leading cause of neonatal morbidity and mortality in the United States and is associated with substantial societal and healthcare costs.[1, 2] On the other, late-term and post-term pregnancies are also associated with increased maternal, fetal and neonatal risks.[3] Because of these risks, the American College of Obstetricians and Gynecologists (ACOG) states that a provider may consider induction of labor between 41 0/7 and 41 6/7 weeks gestational age and recommends induction of labor after 42 0/7 weeks gestational age. [3]

While obstetricians generally agree on the management of late- and post-term pregnancies, uncertainty exists over the optimal timing of delivery among pregnancies between 39 and 41 weeks gestation. On one hand, elective induction of labor at 39 weeks gestational age avoids potential risks of ongoing pregnancies including preeclampsia and stillbirth. One European analysis quantified the total pregnancy loss rate at 39, 40 and 41 weeks as 1.4%, 2.4% and 2.8%, respectively.[4] Additionally, elective induction decreases the risk of macrosomia with its attendant risk of shoulder dystocia with or without permanent brachial plexus injury. Both preeclampsia and fetal macrosomia increase the risk of cesarean delivery.[5–10] However, induction of labor also carries risk. Women who undergo induction of labor have higher rates uterine hyperstimulation and Category II and III fetal heart rate tracings.[11] Additionally, nulliparous patients with an unfavorable cervix undergoing induction of labor may carry a higher rate of cesarean delivery.[12–14]

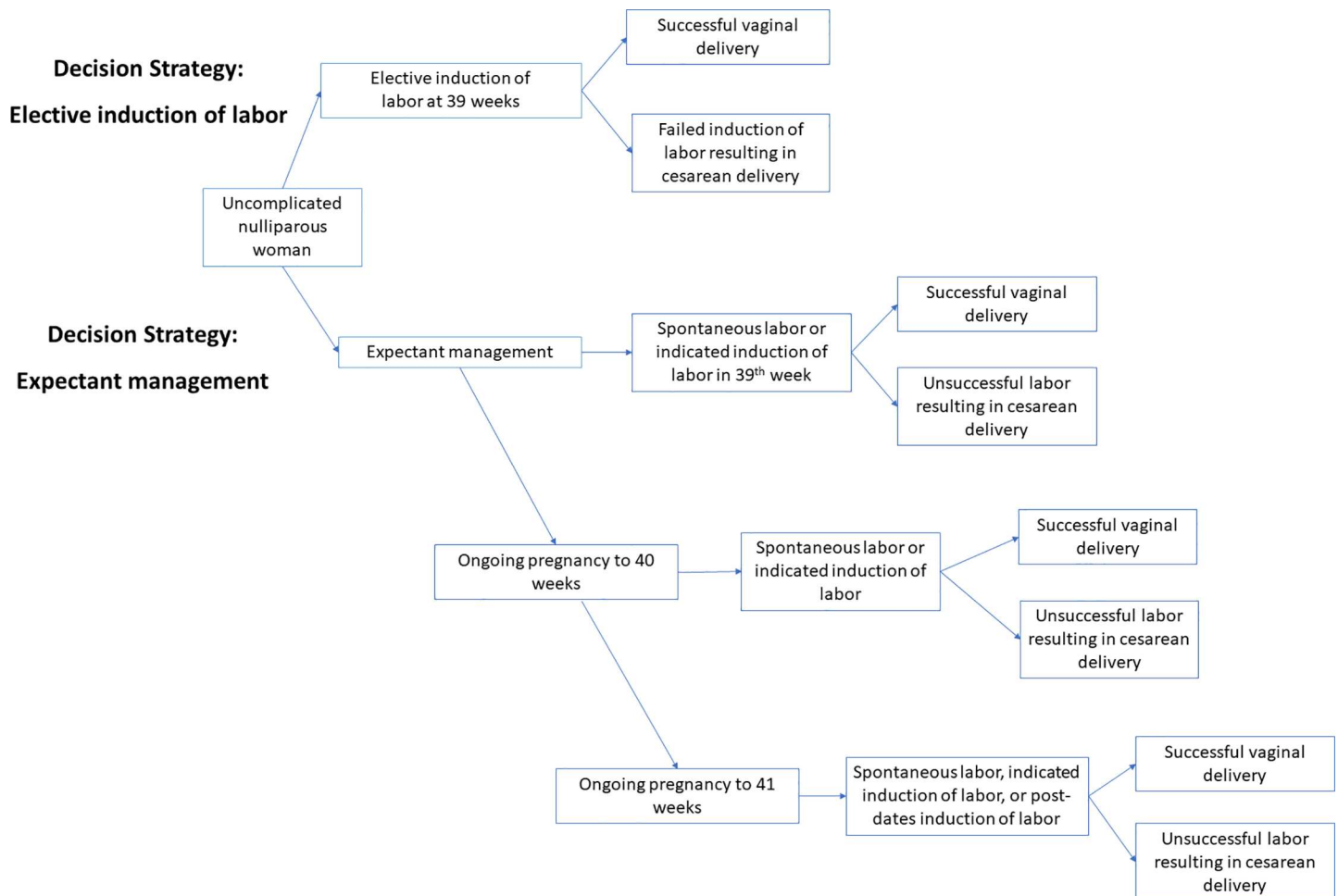
Available literature to guide clinicians is biased by retrospective data and prospective studies that are underpowered to detect differences in several clinically important outcomes.[15, 16] When empirical studies do not exist or are difficult to conduct, mathematical modeling may be the best option available to derive rational policy. Therefore, in light of this clinical equipoise, our objective was to perform a comparative effectiveness analysis of elective induction of labor at 39 weeks gestational age among nulliparous women with uncomplicated pregnancies as compared to expectant management with induction of labor for standard medical or obstetrical indications or at 41 weeks gestation in undelivered mothers.

## Materials and methods

### Model overview

A Monte Carlo micro-simulation model was constructed using TreeAge Pro 2015 software (TreeAge Software, Inc, Williamstown, MA). Institutional review board (IRB) approval was not required as no human subjects were included. The model accounted for uncomplicated nulliparous women with non-anomalous singleton, vertex presenting fetuses who remained pregnant until 39 weeks gestation. Uncomplicated was defined based on the definition used by Gibson et al.[17] by excluding women with a prior uterine scar, planned or elective cesarean delivery, or with chronic maternal conditions that may lead to indicated delivery, including diabetes mellitus, chronic hypertension, cardiovascular disease, placental previa, or HIV positive status. As depicted in Fig 1, the two cohorts of the decision analytic tree were mutually exclusive, consisting of:

1. **elective induction** of labor at 39 weeks gestational age (eIOL), or
2. **expectant management** with induction of labor at 41 weeks if undelivered (EM).



**Fig 1. Elective induction of labor decision tree model.** This model schematic demonstrates two mutually exclusive arms: elective induction (eIOL) of labor at 39 weeks or expectant management with induction of labor for medical and obstetrical indications or by 41 weeks for undelivered patients.

<https://doi.org/10.1371/journal.pone.0193169.g001>

The elective induction cohort was modeled to result in one of two delivery outcomes: vaginal or cesarean delivery. Operative vaginal deliveries were not included in this model as input probabilities were limited by data sources. Mode of delivery outcomes among the expectant management cohort were modeled in the following manner: at 39 weeks the mother may undergo spontaneous labor, or may require a medically or obstetrically indicated induction of labor; if the patient was undelivered at week 40 she may undergo spontaneous labor or she may develop a medical or obstetrical indication to undergo an induction of labor; if undelivered at 41 weeks she may undergo induction of labor and either have a successful vaginal delivery or be delivered by cesarean section.

Cesarean delivery rates among nulliparous women with a non-anomalous singleton, vertex presenting fetus were derived from data published by Gibson et al. [17] from an analysis of the Consortium on Safe Labor (CSL) and then confirmed in written communication in January 2017 (written confirmation available upon request). The CSL was funded by the National Institutes of Health with several goals, one of which was to “describe contemporary labor progression at the national level.” Trained staff reviewed over a quarter of a million deliveries at 19 hospitals in the United States from 2002 to 2008.[18] Using the CSL data allowed two key variables of this model to be populated with reliable, contemporary and generalizable data: a) CSL included information on inception cohort ( $n = 233,736$  women) followed from gestational week 37 to 40. This enabled us to accurately calculate both numerator and denominator for the outcome of interest such as cesarean delivery, and b) modified Bishop score (characterized in a dichotomous fashion as favorable versus unfavorable) at the time of presentation to labor and delivery as it related to mode of delivery. For this model we used a modified Bishop score compromising dilation, effacement, and station to determine cervical ripeness. We defined an unripe cervix as a modified Bishop score  $\leq 4$  which was based on the manuscript by Gibson et al.[17] which was based on a prior publication from the CSL database.[19] One aspect of this variable not reported by the CSL was cesarean delivery rate as a function of Bishop score at 41 weeks. Therefore, data were analyzed and a curve fitting data projected the cesarean delivery rates as a function of Bishop score at 41 weeks (see [S1 Fig](#)). When data were missing and / or unavailable, probabilities were taken from contemporary literature as noted in [S1 Appendix](#). When data did not exist, we analyzed existing data and a curve fitting the data was calculated (approximation).

The model accounted for these possible maternal outcomes: a mother with no delivery complications; a mother with morbidity defined as requiring blood transfusion, chorioamnionitis or preeclampsia; severe morbidity managed in labor and delivery including eclampsia, hemorrhage, uterine rupture, septic shock, unplanned hysterectomy, unplanned operation, or thromboembolic events; severe morbidity requiring management in an intensive care unit; or maternal death.

Regarding fetal outcomes there were two possibilities: the fetus survives until delivery or the fetus experiences an intrauterine fetal demise. If the fetus survives until delivery, the model accounted for the following neonatal outcomes: an infant without complications; an infant with morbidity including meconium stained amniotic fluid or a shoulder dystocia without lasting neurological damage; an infant with severe morbidity defined as a composite of major comorbidities (birth injuries, sepsis, pneumonia, intraventricular hemorrhage, aspiration, hypoxic ischemic encephalopathy, respiratory distress syndrome, seizures, oliguria, myocardial injury, ventilator use, CPAP use, transient tachypnea of the newborn, transfusions, or surfactant use), or a composite of respiratory morbidities (oxygen use, CPAP use, transient tachypnea of the newborn, or surfactant administration); or a neonatal death.

## Maternal and perinatal variables and baseline model assumptions

Baseline model assumptions were derived from the literature, primarily Gibson et al.'s analysis of CSL. We performed systematic reviews of the literature searching for all existing systematic reviews, randomized trials, registries and observational studies addressing the question of elective induction of labor at 39 versus expectant management with induction of labor at 41 weeks of gestational age. Because we found no empirical or modeling study directly answering this question, we proceeded with development of the model as described in this paper.

The model consisted of 41 variables, 101 evidenced-based estimates and 14 derived calculations. Collectively, they aimed to describe the probabilities of entering a particular health state and the morbidity and mortality associated with each of these states. [S1 Appendix](#) describes all variables used in the model.

Data used to inform the model were based on both randomized and observational studies; expert opinions were used to estimate the additional effect of the expected range of values/preferences. The most challenging aspect of this analysis was the question of how to account for the relative value associated with maternal versus infant health. Since preferences of the unborn fetus are impossible to obtain, we approached this problem as follows: first, as customary, we assigned the value of 1 to perfect health status, 0 to death. To weigh the importance of maternal versus perinatal mortality but to ensure that the value for given health status can range between 0 and 1 only, we used the weights  $1/(1+x)$  and  $x/(1+x)$  for mother and baby, respectively. Note that  $1/(1+x) + x/(1+x) = 1$ ;  $x$  represents the ratio of importance of mother's over infant's health. This means if  $x = 2$ , health of mother is as twice as important; if  $x = 1/2$ , infant's health is twice as important. This can also be thought as regret: how many times one would regret having a mother worse off than baby. [20] Similarly, we introduced variables  $y_B$  and  $y_M$  to represent the ratio of morbidity/mortality for infant and mother, respectively. For example,  $y = 1/4$  mortality indicates that mortality was 4 times more important than morbidity. However, some morbidities can be more severe than the others. The morbidity for the newborn was weighted using the five minute Apgar score derived from National Vital Statistics reports [21] in such a way that categorized it as severe morbidity if the Apgar score was 1 to 3, non-severe if the score was 4 to 7, while a healthy baby was assigned Apgar score 8 to 10. We acknowledge the limitation of using Apgar scores as a marker for neonatal morbidity as infants with low Apgar scores can have normal acid-base status and vice versa [22] as well as the arbitrary Apgar cutoffs that define severe, non-severe and healthy. However, every infant born in the United States is assigned Apgar scores making it the only available health proxy available for all neonates.

For maternal health states, we relied on the systematic review by the Agency for Healthcare Research and Quality [23] to assign distribution of the utilities ranging from 0.6 to 1, which we then weighted by severe and non-severe morbidities and further categorized according to the management in labor and delivery or no Intensive Care Unit (ICU) versus ICU management. Because morbidity is disutility (*i.e.*, the higher value refers to worse health status), non-ICU morbidity is lower than ICU morbidity and we arbitrary assigned the ICU morbidity to 0.5 = best, [24] 1 = worst, while non-severe morbidity was weighted as 0.3 = best and 1 = worst.

## Main analyses

The goal of the model was to simulate individual patient outcomes based on the existing data from the literature. Each pregnant woman moves through the health states according to random numbers drawn from given probability distributions. Because the event rates for key outcomes such as mortality is low, we repeated the process for a minimum of 100,000 patients (up

to 1,000,000 women *i.e.*, until we obtained saturation in the findings beyond which the increase number of simulations did not affect modeling results. The microsimulation allows generation of mean values with variations around the mean (*e.g.*, standard deviation) for the entire group and the various subgroups of patients for the given outcomes of interest (*e.g.*, maternal vs. infant mortality, etc.). The best strategy is the one which generated the lower values in terms of morbidity and mortality. The main results were expressed in terms of the frequency of the strategy generating the most “optimal outcomes” when the probability of the event is weighted with health state utility (ranging from 0 to 1- see below). The secondary analyses assessed the frequency of maternal and infant mortality, effect of the mode of delivery on the frequency of Cesarean deliveries, and the effect of morbidity and values and preferences on the choice of the optimal strategy. Note that we decided against presenting our main analyses as quality-adjusted life expectancy as some authors did in assessing the impact of delivery in 41 vs. 42 weeks; [25] quality-adjusted life expectancy reporting would require taking perspective of the mother. However, health of the baby is also important, and we took this into consideration as outlined above.

### Sensitivity analyses

Monte-Carlo microsimulation simultaneously samples each model parameter from a given probability distribution, which allows assessment of the effect of all parameters on the robustness of the model results. Nevertheless, we supplemented these multivariable analyses with one way Monte Carlo analyses of key variables of interest, allowing us to vary over the ranges that extend beyond the most plausible values specified in the multivariable analysis. We were particularly interested in the effect of maternal age, preferences / values, and morbidities—the latter initially specified based on our estimates. As explained above, Monte Carlo microsimulation allows sampling and assessment of uncertainties of the effects of management strategies by computing the analysis thousands of times by randomly drawing the numbers according to pre-specified probability distributions (see [S1 Appendix](#)). In turn, this allows hypothesis testing of the observed differences between the management strategies. Consequently, where appropriate, we tested for the differences in outcomes between two strategies (*e.g.*, using chi-square test to assess differences between maternal, stillbirth, or perinatal mortality). [S1 Appendix](#) shows all variables and assumed distribution. Distributions were selected based on empirical evidence (normal distribution for age), *beta* (which represents a natural choice for representing uncertainty of the probability parameter where data describing that parameter are binomial—such as presence or absence of outcome of interest), [26] and triangular (where we could not find empirical data and relied on our best estimates, such as weighting morbidities).

### Results

Using a decision analytic model informed by contemporaneous literature, we found that elective induction of labor among uncomplicated nulliparous women with vertex presenting singleton fetuses resulted in less maternal and neonatal risk as compared to expectant management with induction of labor for medical or obstetrical indications or by 41 weeks if undelivered. The cesarean section rate was significantly higher in the expectant management cohort as compared to elective induction of labor as shown in [Fig 2](#): 35.9% versus 13.9%,  $p < 0.01$ . When patients with an unfavorable cervix were analyzed, 39 week eIOL still resulted in fewer cesarean deliveries as compared to EM (8.0% versus 26.1%,  $p < 0.01$ ).

Modeling 100,000 deliveries resulted in statistically similar rates of maternal mortality (0 maternal deaths in the elective induction of labor arm as compared to 1 maternal death in the expectant management arm,  $p = 0.32$ ). However, there was a significantly higher rate of



maternal morbidity among the expectant management group as compared to the elective induction of labor arm: 21.2% versus 16.5%,  $p < 0.01$ .

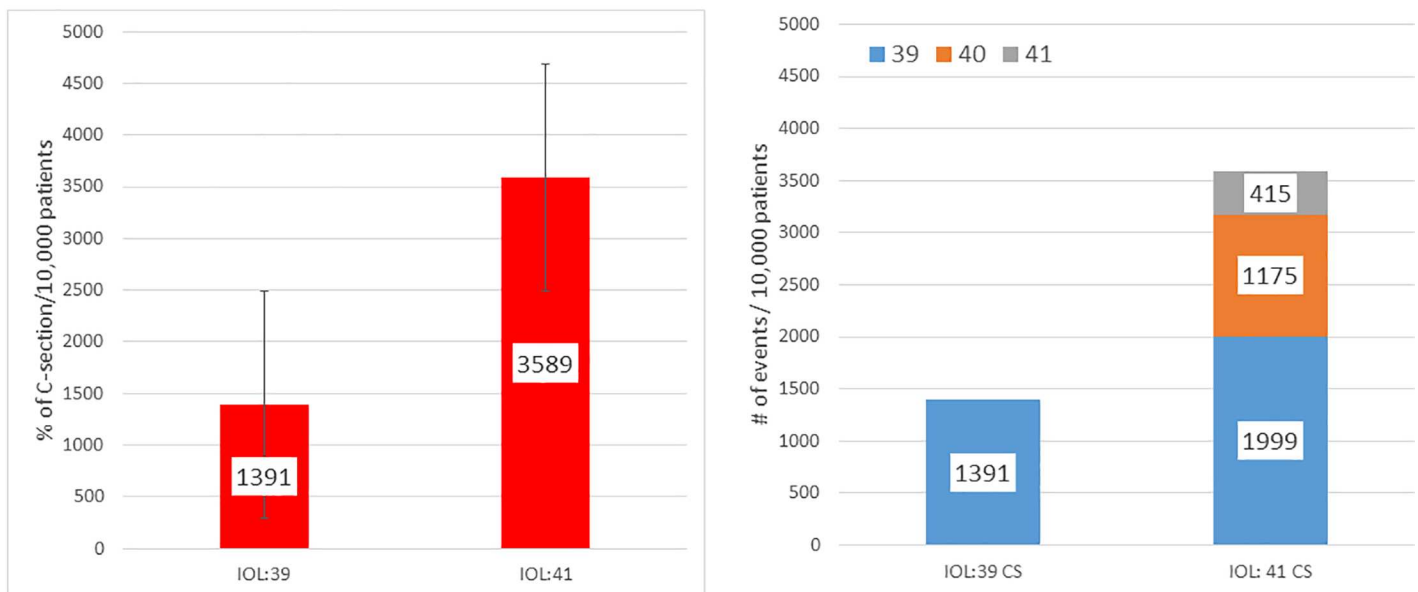
More stillbirths occurred in the expectant management group: 0.13% versus 0%,  $p < 0.01$ . Furthermore, there were more neonatal deaths among the expectant management group as compared to the elective induction cohort: 0.25% versus 0.12%,  $p < 0.03$ . Additionally, there were more infants with severe complications in the expectant management group as compared to the elective induction of labor group: 12.1% versus 9.4%,  $p < 0.01$ .

Preference regarding the importance of maternal and perinatal health is an important factor. When the ratio of the importance of each member of the dyad was studied as a function of combined maternal and perinatal morbidity and mortality, elective induction of labor at 39 weeks was always the best strategy regardless of the preference of maternal vis a vis perinatal health. Similarly, elective induction at 39 weeks was the leading strategy when evaluating perinatal as compared to maternal mortality. Additionally, when evaluating the impact of maternal age and preferences for maternal morbidity as compared to mortality, again, elective induction at 39 weeks prevailed over expectant management.

### Discussion

Using Monte Carlo microsimulation methodology, we found that, among uncomplicated, nulliparous, non-anomalous, singleton, vertex pregnancies, elective induction of labor at 39 weeks

## *% of C sections is higher in the IOL-41 as opposed to eIOL-39 week delivery strategy*



IOL-41 is associated with more C-sections than eIOL-39 delivery ( $p < 0.0000001$ )

**Fig 2. Lower cesarean delivery rates among eIOL as compared to EM.** Expectant management resulted in significantly higher cesarean delivery rates as compared to the elective induction of labor strategy: 35.9% versus 13.9%,  $p < 0.01$ .

<https://doi.org/10.1371/journal.pone.0193169.g002>

resulted in less maternal and neonatal risk as compared to expectant management with subsequent induction of labor by 41 weeks gestation. Specifically, irrespective of cervical examination, the 39 week elective induction cohort experienced fewer cesarean deliveries, lower rates of maternal morbidity, fewer stillbirths and neonatal deaths, and less neonatal morbidity than mothers expectantly managed until 41 weeks.

While obstetric mantra from past eras stressed the increased risk of cesarean delivery with induction of labor, our findings—driven by reliable, contemporary and generalizable data from the Consortium of Safe Labor—complement contemporary literature that elective induction of labor actually decreases the risk of cesarean delivery. [27–29] Additionally, these results align with findings from a recent systematic review of randomized trials that elective induction does not increase cesarean rates.[16]

Importantly, our findings are also supported by biologically plausible explanations. Placental insufficiency has been proposed as an underlying mechanism for many otherwise unexplained, term stillbirths.[30] This diagnosis can explain why stillbirths increase with advancing gestational age in a stochastic fashion. Induction of labor at 39 weeks may lower rates of stillbirth as the placenta is still able to perfuse the fetus both prior to and during labor. Cord accidents are likely stochastic as well—increasing with in utero exposure and perhaps a dilated cervix. A rising occurrence of placental insufficiency could also contribute to an increase in cesarean deliveries due to non-reassuring fetal testing with increasing gestational age.[31]

Conversely, fetal weight also progressively increases with increasing gestational age. From week 39 to 41 fetal weight increases on average 100 to 150 grams per week.[32] Thus, the risk of macrosomia with its attendant effects on labor progress and the diagnosis of cephalopelvic disproportion, the leading indication for cesarean delivery, increases with increasing gestational age.[33] Similarly, macrosomia is a major risk factor for shoulder dystocia with permanent brachial plexus injury, a major source of serious neonatal morbidity.[34] Thus, the likelihood of cesarean delivery and serious neonatal morbidity should also display a stochastic relationship to duration of gestation. Together, deteriorating placental function and excess fetal growth provide strong biological plausibility to our findings that elective induction at 39 weeks reduces the risk of these adverse pregnancy outcomes.

While this study found no difference in rates of maternal mortality between the groups, maternal morbidity was significantly higher among the expectant management group. One reason many providers are opposed to elective induction of labor is attributed to the notion of increased rates of cesarean deliveries, and thus an increase in maternal morbidity. However, the opposite was found. Thus, a primary argument against elective induction at 39 weeks is without empirical support. Given the recent trends towards increased maternal morbidity and mortality,[35] elective induction of labor could be considered as one factor in comprehensive strategy to improve maternal outcomes.

Our study has several strengths. First, the rigorous Monte Carlo microsimulation methodology strengthens the results and our conclusions. This methodology allows sampling and assessment of uncertainties of the effects of management strategies. In turn, this allows hypothesis testing of the observed differences between the management strategies. Second, while some outcomes in our model are so rare that gaps in the literature do not address them, similarities between published literature and our study strengthens the reliability of our findings. We note that there is an ongoing, NIH-funded, randomized controlled trial randomizing uncomplicated, nulliparous patients with singleton, non-anomalous fetuses to either induction of labor at 39 weeks or expectant management. The primary outcome is a composite of severe perinatal morbidity and mortality (NCT01990612). We anxiously await the results of this significant study.

While our study has several strengths, there are also important limitations to address. First, all models, including ours, are based on information that vary in quality. Data used in the



model were based mostly on observational studies which are inherently prone to bias. We attempted to overcome this bias in four ways: 1) by using data from the Consortium on Safe Labor which meticulously reviewed over a quarter of a million deliveries at nearly 20 centers in the United States; 2) when CSL data was missing or unavailable, we performed systematic searches of the literature to derive the best possible estimates for our model, 3) by performing Monte Carlo multivariable microsimulation to allow sampling of the large population based on the best and most plausible empirical estimated and theoretical assumptions, and 4) by performing sensitivity analyses examining effects of values and preferences on outcomes extending beyond the assumptions in the multivariable Monte Carlo Analysis. We also used clinical acumen to identify the most relevant outcomes and not necessarily all possible clinical outcomes that were reported in the literature. We believe that focusing on the most important outcomes generated more salient results, the significance of which could have been diluted by including outcomes that are admittedly clinically less relevant, or exceedingly rare. The consistency of the findings in all the analyses we performed increases the credibility of our analysis. However, despite these attempts, bias may not be completely eliminated. In addition, variations in obstetric management could also affect outcomes. While our study and others [36, 37] have found an increase in the rate of intrauterine fetal demise rate among patients in the expectant management group, it is unlikely that this population was undergoing antenatal fetal surveillance which would not normally be initiated until 40 to 41 weeks gestation. It is unknown if initiation of antenatal fetal surveillance at 39 weeks gestational age would mitigate the disparity in fetal deaths between the groups. Conversely, failure of practitioners to allow an adequate trial of labor could also negate observed benefits of an elective induction of labor. Furthermore, we are not able to elucidate the impact of elective induction of labor on the burden of perineal trauma.

Another extremely important aspect of this subject matter that is outside of the scope of this paper is: what do women want? While our results show less maternal and neonatal risk among women undergoing elective induction of labor at 39 weeks, the rates of these complications are still quite rare. Shared decision making is one of the cornerstones of modern medicine. Spontaneous labor without medical intervention is considered sacred by many women. Hospital admission for an induction of labor and the barrage of medical interventions is not the preference of many women. Moreover, the personal and societal costs of failed induction of labor are not directly accounted for in this model.

It should also be noted that it is unknown whether or not our healthcare system can adequately address the logistics of routine elective inductions at 39 weeks gestation, and if so, how these clinical findings translate into healthcare costs. Inductions of labor are time-intensive [38, 39] and can be costly; therefore, it is unclear if a policy of elective induction of labor at 39 weeks would be cost-effective. However, a preliminary estimate of cost savings appears supportive. If a policy of elective induction at 39 weeks gestational age saves 21,980 cesarean sections per 100,000 deliveries, and if a cesarean delivery costs roughly \$3,900 USD more than a vaginal delivery, [40] one can realize potential financial savings associated with a strategy that can decrease cesarean rates to this degree. We acknowledge that a proper cost-effectiveness analysis may yield different results once all costs—including the additional healthcare costs for extended inductions—are accounted for; however, the potential savings does warrant further investigation.

In closing, our Monte Carlo microsimulation model demonstrates that elective induction of labor among uncomplicated, nulliparous patients with singleton, vertex, non-anomalous fetuses results in lower maternal and neonatal risk as compared to expectant management. Likely attributable to subsequent deteriorating placental function or cord accidents, induction of labor at 39 weeks is associated with decreased rates of stillbirth and cesarean deliveries due to non-reassuring fetal testing. Reductions in cumulative fetal weight and the occurrence of

macrosomia likely explained decreased cesarean delivery rates with elective induction at 39 weeks. Additionally, there appears to be no maternal benefit to expectant management. These factors also account for the observed reductions in neonatal and maternal morbidity among patients undergoing planned induction. While these findings appear to be reassuring for the population as a whole, we acknowledge that not all women nor their providers desire elective inductions and we recommend that the patient should be the final arbiter of the timing and mode of delivery after adequate counseling and informed consent.

## Supporting information

**S1 Fig. Curve fitting data projecting cesarean rates as function of Bishop at 41 weeks.** This image depicts the curve fitting the data projecting the cesarean delivery rates as a function of Bishop score at 41 weeks gestational age.

(DOCX)

**S1 Appendix. Baseline probabilities used in analytic model.** This appendix outlines the input probabilities used to perform this decision analysis.

(DOCX)

## Acknowledgments

Portions of this work were presented at the American College of Obstetricians and Gynecologists Annual Meeting, Washington, DC, May 14–17, 2016.

## Author Contributions

**Conceptualization:** Rachel G. Sinkey, Jasmin Lacevic, Tea Reljic, Iztok Hozo, Anthony O. Odibo, Benjamin Djulbegovic, Charles J. Lockwood.

**Data curation:** Rachel G. Sinkey, Jasmin Lacevic, Tea Reljic, Iztok Hozo, Kelly S. Gibson, Benjamin Djulbegovic, Charles J. Lockwood.

**Formal analysis:** Jasmin Lacevic, Tea Reljic, Iztok Hozo, Kelly S. Gibson, Anthony O. Odibo, Benjamin Djulbegovic, Charles J. Lockwood.

**Investigation:** Rachel G. Sinkey, Jasmin Lacevic, Tea Reljic, Iztok Hozo, Kelly S. Gibson, Benjamin Djulbegovic, Charles J. Lockwood.

**Methodology:** Rachel G. Sinkey, Jasmin Lacevic, Tea Reljic, Iztok Hozo, Kelly S. Gibson, Benjamin Djulbegovic, Charles J. Lockwood.

**Project administration:** Rachel G. Sinkey, Jasmin Lacevic, Tea Reljic, Iztok Hozo, Benjamin Djulbegovic, Charles J. Lockwood.

**Resources:** Jasmin Lacevic, Tea Reljic, Iztok Hozo, Benjamin Djulbegovic, Charles J. Lockwood.

**Software:** Jasmin Lacevic, Tea Reljic, Iztok Hozo, Benjamin Djulbegovic, Charles J. Lockwood.

**Supervision:** Jasmin Lacevic, Tea Reljic, Benjamin Djulbegovic, Charles J. Lockwood.

**Validation:** Jasmin Lacevic, Tea Reljic, Iztok Hozo, Kelly S. Gibson, Anthony O. Odibo, Benjamin Djulbegovic, Charles J. Lockwood.

**Visualization:** Tea Reljic, Benjamin Djulbegovic, Charles J. Lockwood.

**Writing – original draft:** Rachel G. Sinkey, Jasmin Lacevic, Tea Reljic, Iztok Hozo, Kelly S. Gibson, Anthony O. Odibo, Benjamin Djulbegovic, Charles J. Lockwood.

**Writing – review & editing:** Rachel G. Sinkey, Jasmin Lacevic, Tea Reljic, Iztok Hozo, Kelly S. Gibson, Anthony O. Odibo, Benjamin Djulbegovic, Charles J. Lockwood.

## References

1. Institute of Medicine Committee on Understanding Premature B, Assuring Healthy O. The National Academies Collection: Reports funded by National Institutes of Health. In: Behrman RE, Butler AS, editors. *Preterm Birth: Causes, Consequences, and Prevention*. Washington (DC): National Academies Press (US) National Academy of Sciences.; 2007.
2. Practice bulletin no. 130: prediction and prevention of preterm birth. *Obstetrics and gynecology*. 2012; 120(4):964–73. Epub 2012/09/22. <https://doi.org/10.1097/AOG.0b013e3182723b1b> PMID: 22996126.
3. Practice bulletin no. 146: Management of late-term and postterm pregnancies. *Obstetrics and gynecology*. 2014; 124(2 Pt 1):390–6. Epub 2014/07/23. <https://doi.org/10.1097/01.aog.0000452744.06088.48> PMID: 25050770.
4. Hilder L, Costeloe K, Thilaganathan B. Prolonged pregnancy: evaluating gestation-specific risks of fetal and infant mortality. *British journal of obstetrics and gynaecology*. 1998; 105(2):169–73. Epub 1998/03/21. PMID: 9501781.
5. Caughey AB, Stotland NE, Washington AE, Escobar GJ. Maternal and obstetric complications of pregnancy are associated with increasing gestational age at term. *American journal of obstetrics and gynecology*. 2007; 196(2):155.e1–6. Epub 2007/02/20. <https://doi.org/10.1016/j.ajog.2006.08.040> PMID: 17306661; PubMed Central PMCID: PMC1941614.
6. Caughey AB, Musci TJ. Complications of term pregnancies beyond 37 weeks of gestation. *Obstetrics and gynecology*. 2004; 103(1):57–62. Epub 2004/01/06. <https://doi.org/10.1097/01.AOG.0000109216.24211.D4> PMID: 14704245.
7. McLean FH, Boyd ME, Usher RH, Kramer MS. Postterm infants: too big or too small? *American journal of obstetrics and gynecology*. 1991; 164(2):619–24. Epub 1991/02/01. PMID: 1992713.
8. Eden RD, Seifert LS, Winegar A, Spellacy WN. Perinatal characteristics of uncomplicated postdate pregnancies. *Obstetrics and gynecology*. 1987; 69(3 Pt 1):296–9. Epub 1987/03/01. PMID: 3822274.
9. Caughey AB, Bishop JT. Maternal complications of pregnancy increase beyond 40 weeks of gestation in low-risk women. *Journal of perinatology: official journal of the California Perinatal Association*. 2006; 26(9):540–5. Epub 2006/07/14. <https://doi.org/10.1038/sj.jp.7211560> PMID: 16837930.
10. Yudkin PL, Wood L, Redman CW. Risk of unexplained stillbirth at different gestational ages. *Lancet*. 1987; 1(8543):1192–4. Epub 1987/05/23. PMID: 2883499.
11. ACOG Practice Bulletin No. 107: Induction of labor. *Obstetrics and gynecology*. 2009; 114(2 Pt 1):386–97. Epub 2009/07/23. <https://doi.org/10.1097/AOG.0b013e3181b48ef5> PMID: 19623003.
12. Luthy DA, Malmgren JA, Zingheim RW. Cesarean delivery after elective induction in nulliparous women: the physician effect. *American journal of obstetrics and gynecology*. 2004; 191(5):1511–5. Epub 2004/11/18. <https://doi.org/10.1016/j.ajog.2004.07.001> PMID: 15547518.
13. Vrouenraets FP, Roumen FJ, Dehing CJ, van den Akker ES, Aarts MJ, Scheve EJ. Bishop score and risk of cesarean delivery after induction of labor in nulliparous women. *Obstetrics and gynecology*. 2005; 105(4):690–7. Epub 2005/04/02. <https://doi.org/10.1097/01.AOG.0000152338.76759.38> PMID: 15802392.
14. Vahratian A, Zhang J, Troendle JF, Sciscione AC, Hoffman MK. Labor progression and risk of cesarean delivery in electively induced nulliparas. *Obstetrics and gynecology*. 2005; 105(4):698–704. Epub 2005/04/02. <https://doi.org/10.1097/01.AOG.0000157436.68847.3b> PMID: 15802393.
15. Stock SJ, Ferguson E, Duffy A, Ford I, Chalmers J, Norman JE. Outcomes of elective induction of labour compared with expectant management: population based study. *Bmj*. 2012; 344:e2838. Epub 2012/05/12. <https://doi.org/10.1136/bmj.e2838> PMID: 22577197; PubMed Central PMCID: PMC3349781.
16. Saccone G, Berghella V. Induction of labor at full term in uncomplicated singleton gestations: a systematic review and metaanalysis of randomized controlled trials. *American journal of obstetrics and gynecology*. 2015; 213(5):629–36. Epub 2015/04/18. <https://doi.org/10.1016/j.ajog.2015.04.004> PMID: 25882916.
17. Gibson KS, Waters TP, Bailit JL. Maternal and neonatal outcomes in electively induced low-risk term pregnancies. *Am J Obstet Gynecol*. 2014; 211(3):249.e1–.e16. Epub 2014/03/19. <https://doi.org/10.1016/j.ajog.2014.03.016> PMID: 24631440.

18. EB Research: Consortium on Safe Labor (CSL). [www.nichd.nih.gov/about/org/diphr/officebranch/eb/safe-labor](http://www.nichd.nih.gov/about/org/diphr/officebranch/eb/safe-labor) Accessed February 10, 2018.
19. Laughon SK, Zhang J, Grewal J, Sundaram R, Beaver J, Reddy UM. Induction of labor in a contemporary obstetric cohort. *American journal of obstetrics and gynecology*. 2012; 206(6):486.e1-9. Epub 2012/04/24. <https://doi.org/10.1016/j.ajog.2012.03.014> PMID: 22520652; PubMed Central PMCID: PMC3361637.
20. Tsalatsanis A, Hozo I, Vickers A, Djulbegovic B. A regret theory approach to decision curve analysis: a novel method for eliciting decision makers' preferences and decision-making. *BMC medical informatics and decision making*. 2010; 10:51. Epub 2010/09/18. <https://doi.org/10.1186/1472-6947-10-51> PMID: 20846413; PubMed Central PMCID: PMC2954854.
21. National Center for Health Statistics. [http://www.cdc.gov/nchs/data\\_access/vitalstatsonline.htm](http://www.cdc.gov/nchs/data_access/vitalstatsonline.htm) Accessed March 1, 2016.
22. Sabol BA, Caughey AB. Acidemia in neonates with a 5-minute Apgar score of 7 or greater—What are the outcomes? *American journal of obstetrics and gynecology*. 2016. Epub 2016/06/04. <https://doi.org/10.1016/j.ajog.2016.05.035> PMID: 27255470.
23. Caughey AB, Sundaram V, Kaimal AJ, Cheng YW, Gienger A, Little SE, et al. Maternal and neonatal outcomes of elective induction of labor. Evidence report/technology assessment. 2009;(176):1–257. Epub 2009/05/05. PMID: 19408970; PubMed Central PMCID: PMC2954854.
24. Thomas K, Peter JV, Christina J, Jagadish AR, Rajan A, Lionel P, et al. Cost-utility in medical intensive care patients. Rationalizing ongoing care and timing of discharge from intensive care. *Annals of the American Thoracic Society*. 2015; 12(7):1058–65. Epub 2015/05/27. <https://doi.org/10.1513/AnnalsATS.201411-527OC> PMID: 26011090.
25. Aaron B. Caughey MD, M.P.P., M.P.H., Ph.D., Vandana Sundaram MPH, Anjali J. Kaimal MDea. Maternal and Neonatal Outcomes of Elective Induction of Labor. Agency for Healthcare Research and Quality (AHRQ) Publication. 2009;09-E005.
26. Briggs A, Claxton K, Schulpher M. *Decision Modeling for Health Evaluation*. Oxford, UK: Oxford University Press; 2011.
27. Mishanina E, Rogozinska E, Thatthi T, Uddin-Khan R, Khan KS, Meads C. Use of labour induction and risk of cesarean delivery: a systematic review and meta-analysis. *CMAJ: Canadian Medical Association journal = journal de l'Association medicale canadienne*. 2014; 186(9):665–73. Epub 2014/04/30. <https://doi.org/10.1503/cmaj.130925> PMID: 24778358; PubMed Central PMCID: PMC34049989.
28. Darney BG, Snowden JM, Cheng YW, Jacob L, Nicholson JM, Kaimal A, et al. Elective induction of labor at term compared with expectant management: maternal and neonatal outcomes. *Obstetrics and gynecology*. 2013; 122(4):761–9. Epub 2013/10/03. <https://doi.org/10.1097/AOG.0b013e3182a6a4d0> PMID: 24084532; PubMed Central PMCID: PMC3905733.
29. Gulmezoglu AM, Crowther CA, Middleton P, Heatley E. Induction of labour for improving birth outcomes for women at or beyond term. *The Cochrane database of systematic reviews*. 2012;(6):Cd004945. Epub 2012/06/15. <https://doi.org/10.1002/14651858.CD004945.pub3> PMID: 22696345; PubMed Central PMCID: PMC34065650.
30. Pasztor N, Kereszturi A, Kozinszky Z, Pal A. Identification of causes of stillbirth through autopsy and placental examination reports. *Fetal and pediatric pathology*. 2014; 33(1):49–54. Epub 2013/11/07. <https://doi.org/10.3109/15513815.2013.850132> PMID: 24192061.
31. Galal M, Symonds I, Murray H, Petraglia F, Smith R. Postterm pregnancy. Facts, views & vision in *ObGyn*. 2012; 4(3):175–87. Epub 2012/01/01. PMID: 24753906; PubMed Central PMCID: PMC3991404.
32. Williams RL, Creasy RK, Cunningham GC, Hawes WE, Norris FD, Tashiro M. Fetal growth and perinatal viability in California. *Obstetrics and gynecology*. 1982; 59(5):624–32. Epub 1982/05/01. PMID: 7070736.
33. Nicholson JM, Yeager DL, Macones G. A preventive approach to obstetric care in a rural hospital: association between higher rates of preventive labor induction and lower rates of cesarean delivery. *Annals of family medicine*. 2007; 5(4):310–9. Epub 2007/08/01. <https://doi.org/10.1370/afm.706> PMID: 17664497; PubMed Central PMCID: PMC2954854.
34. Ouzounian JG. Risk factors for neonatal brachial plexus palsy. *Seminars in perinatology*. 2014; 38(4):219–21. Epub 2014/05/28. <https://doi.org/10.1053/j.semper.2014.04.008> PMID: 24863028.
35. Chescheir NC. Enough already! *Obstetrics and gynecology*. 2015; 125(1):2–4. Epub 2015/01/07. <https://doi.org/10.1097/AOG.0000000000000618> PMID: 25560096.
36. Rosenstein MG, Snowden JM, Cheng YW, Caughey AB. The mortality risk of expectant management compared with delivery stratified by gestational age and race and ethnicity. *American journal of obstetrics and gynecology*. 2014; 211(6):660.e1–8. Epub 2014/06/10. <https://doi.org/10.1016/j.ajog.2014.06.008> PMID: 24909340; PubMed Central PMCID: PMC34252751.

37. Rosenstein MG, Cheng YW, Snowden JM, Nicholson JM, Caughey AB. Risk of stillbirth and infant death stratified by gestational age. *Obstetrics and gynecology*. 2012; 120(1):76–82. Epub 2012/08/24. <https://doi.org/10.1097/AOG.0b013e31825bd286> PMID: 22914394; PubMed Central PMCID: PMC3719843.
38. Osmundson S, Ou-Yang RJ, Grobman WA. Elective induction compared with expectant management in nulliparous women with an unfavorable cervix. *Obstetrics and gynecology*. 2011; 117(3):583–7. Epub 2011/02/24. <https://doi.org/10.1097/AOG.0b013e31820caf12> PMID: 21343761.
39. Osmundson SS, Ou-Yang RJ, Grobman WA. Elective induction compared with expectant management in nulliparous women with a favorable cervix. *Obstetrics and gynecology*. 2010; 116(3):601–5. Epub 2010/08/25. <https://doi.org/10.1097/AOG.0b013e3181eb6e9b> PMID: 20733441.
40. Kaimal AJ, Little SE, Odibo AO, Stamilio DM, Grobman WA, Long EF, et al. Cost-effectiveness of elective induction of labor at 41 weeks in nulliparous women. *American journal of obstetrics and gynecology*. 2011; 204(2):137.e1–9. Epub 2010/10/23. <https://doi.org/10.1016/j.ajog.2010.08.012> PMID: 20965482.