



Genetic defects in the growth hormone–IGF-I axis causing growth hormone insensitivity and impaired linear growth

Martin O. Savage^{1*}, Vivian Hwa², Alessia David¹, Ron G. Rosenfeld² and Louise A. Metherell¹

¹ Department of Endocrinology, William Harvey Research Institute, Barts and the London School of Medicine and Dentistry, London, UK

² Department of Pediatrics, Oregon Health and Science University, Portland, OR, USA

Edited by:

Stefano Cianfarani, University of Rome, Italy

Reviewed by:

Stefano Cianfarani, University of Rome, Italy

Mohamad Maghnie, University of Genova, Italy

*Correspondence:

Martin O. Savage, Department of Endocrinology, Barts and the London School of Medicine and Dentistry, John Vane Science Centre, Charterhouse Square, London EC1M 6BQ, UK.

e-mail: m.o.savage@qmul.ac.uk

Human genetic defects in the growth hormone (GH)–IGF-I axis affecting the IGF system present with growth failure as their principal clinical feature. This is usually associated with GH insensitivity (GHI) presenting in childhood as severe or mild short stature. Dysmorphic features and metabolic abnormalities may also be present. The field of GHI due to mutations affecting GH action has evolved rapidly since the first description of the extreme phenotype related to homozygous GH receptor (*GHR*) mutations in 1966. A continuum of genetic, phenotypic, and biochemical abnormalities can be defined associated with clinically relevant defects in linear growth. The mechanisms of the GH–IGF-I axis in the regulation of normal human growth is discussed followed by descriptions of mutations in *GHR*, *STAT5B*, *IGF-I*, *IGFALS*, *IGF1R*, and *GH1* defects causing bio-inactive GH or anti-GH antibodies. These GH–IGF-I axis defects are associated with a range of clinical, and hormonal characteristics. An up-dated approach to the clinical assessment of the patient with GHI focusing on investigation of the GH–IGF-I axis and relevant molecular studies contributing to the identification of causative genetic defects is also discussed.

Keywords: genetic defects, childhood linear growth, growth hormone insensitivity, growth hormone–IGF-I axis mutations

INTRODUCTION

Human genetic defects in the growth hormone (GH) – IGF-I axis causing disruption of the IGF system are usually associated with GH insensitivity (GHI) due to the essential role of this system in the regulation of GH action. GHI (OMIM #262500 and #245590) was first described in a pediatric setting by Laron et al. (1966), with the description of extreme growth failure in siblings in a consanguineous Jewish family who had the phenotype of hypopituitarism with high serum GH concentrations (Laron, 2004). For many years this disorder was referred to as Laron syndrome and was eventually shown to be caused by a defect in the GH receptor (*GHR*) resulting in deficient binding of ¹²⁵I-GH to *GHR*s prepared from the patients' liver membranes (Eshet et al., 1984). This striking but very rare phenotype, which was also untreatable at that time, became synonymous with the diagnosis of GHI, a perception that remained largely unchallenged for over 20 years. In the late 1980s two pivotal developments brought key changes to the field. The first was the synthesis and availability of recombinant human IGF-I for therapy (Laron et al., 1988; Walker et al., 1991), and the second was the advent of molecular techniques, which led to the cloning, and characterization of the human *GHR*, thus initiating the understanding of the pathophysiology of GHI (Amselem et al., 1989; Godowski et al., 1989). The subsequent study of genetic abnormalities in the GH–IGF axis has provided invaluable information on the physiology of human linear growth.

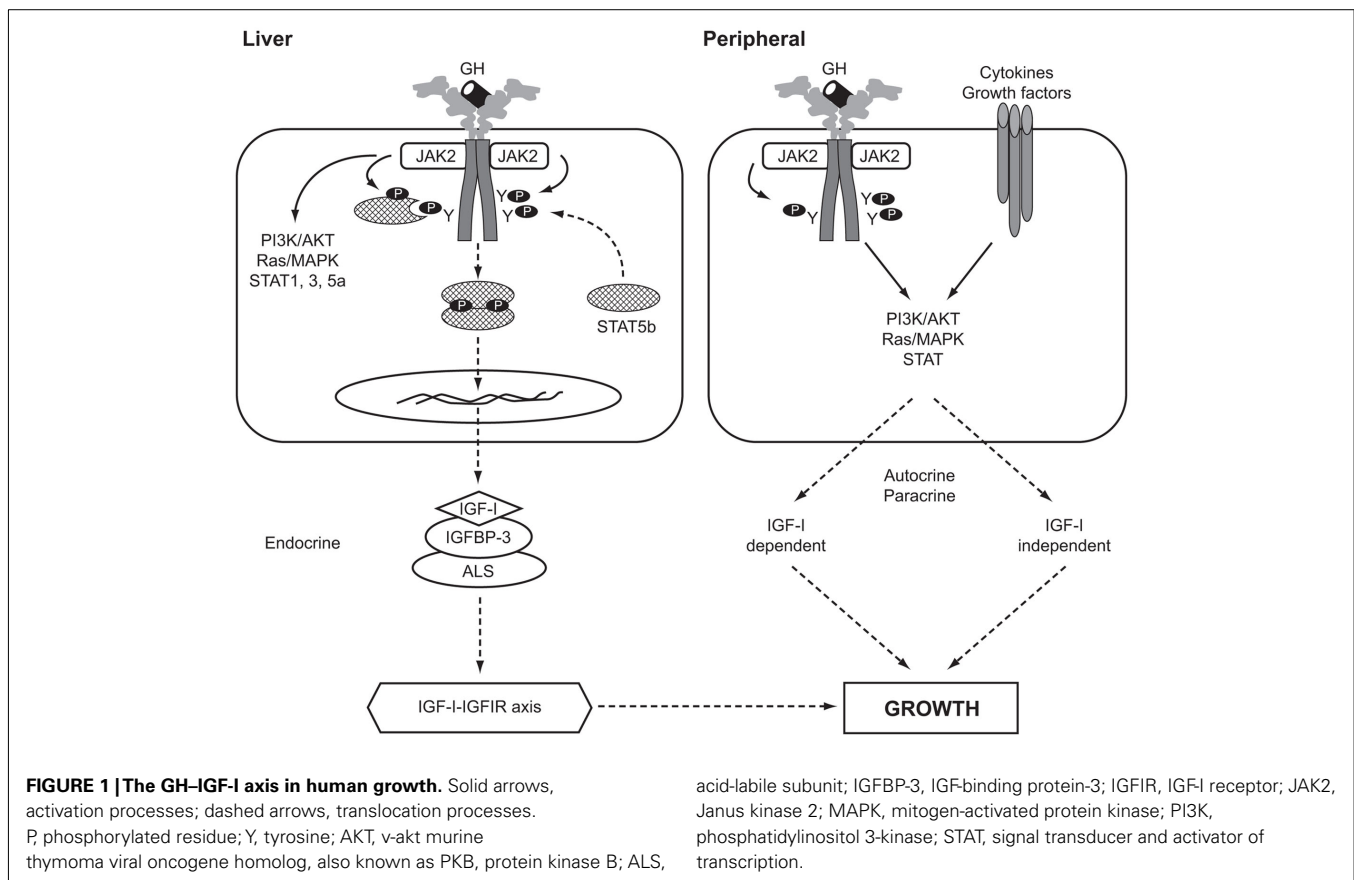
In medicine, scientific advances often move more rapidly than the practices of clinicians, who may remain attached to the recognized, and trusted view of a certain disorder, particularly if it is rare. This has been the case with GHI, which is now known

not to be a single entity, but a broad diagnostic category comprising a range of defects affecting the function of the IGF system. These abnormalities may involve genes coding for proteins that regulate GH binding or signal transduction and IGF-I synthesis, transport, or action and are associated with a variety of phenotypes and biochemical abnormalities presenting to the pediatric endocrinologist. This review will describe the individual mutations and discuss the investigation of the child with short stature who has features suggesting the presence of a causative genetic defect.

Previous reviews have often described the characteristics of the extreme phenotype (Rosenfeld et al., 1994; Laron, 2004; Savage et al., 2006), however we concentrate on defects illustrating the range of phenotypes. The article discusses the genetic causes of GHI, also referred to as primary IGF deficiency. We aim also to up-date and orientate clinicians in the appropriate diagnostic approach to children with growth failure.

THE GH–IGF AXIS IN HUMAN GROWTH PHYSIOLOGY OF GH AND THE IGF-I SYSTEM IN RELATION TO LINEAR GROWTH

The actions of GH are mediated by a combination of components of the IGF system, including IGF-I, IGF-binding proteins (IGF-BPs), the IGF-I receptor (IGFIR), and IGF-independent effects through direct GH action. A diagram of the GH–IGF axis is shown in **Figure 1**. The original “somatomedin hypothesis” proposed that GH binding to its receptor stimulated IGF-I production, which independently affected growth (Salmon and Daughaday, 1957). Green et al. (1985) then proposed the “dual effector hypothesis”



suggesting that GH regulates the expression of locally produced IGF-I, which then acts in an autocrine/paracrine manner. Expression of the *IGF1* gene was found in multiple tissues throughout embryonic and post-natal development (Roberts et al., 1987; Han et al., 1988) and injection of GH into hypophysectomized rats increased *IGF1* mRNA in numerous non-hepatic tissues (Lowe et al., 1987, 1988). Direct injection of GH into the cartilage growth plate of hypophysectomized rats also resulted in significantly increased longitudinal bone growth (Isaksson et al., 1982). These and other studies suggested that GH has local effects, independent of those mediated by circulating “endocrine” IGF-I. This hypothesis was extended by Isaksson and others (Nilsson et al., 1986; Isaksson et al., 1987) who demonstrated that GH stimulated differentiation of preadipocytes and chondrocytes in the growth plate, while IGF-I stimulated their clonal expansion.

In a comprehensive review of the roles of GH and IGF-I, Le Roith et al. (2001) presented a revised somatomedin hypothesis, taking account of gene deletion experiments in mice that questioned the role of liver IGF-I and its circulating endocrine form in controlling post-natal growth and development (Sjögren et al., 1999; Yakar et al., 1999). Liver-specific *Igf1* knock-out mice continued to grow normally despite reduction in circulating IGF-I, indicating that locally produced IGF-I was an important growth mediator (Yakar et al., 1999). Le Roith has recently modified his conclusions following data showing that when the hepatic *Igf1* transgene was able to elevate serum IGF-I levels growth was largely restored (Wu et al., 2009). Kaplan and Cohen

(2007) further proposed the apparent paradox that GH exerts its effects through IGFs, some of which oppose the known actions of GH.

Studies using *Igf1* knock-out mouse models have shown that GH stimulates bone growth by IGF-I-independent and IGF-I-dependent mechanisms. Some 75% of serum IGF-I is liver-derived, while the remainder originates from non-hepatic tissues (Sjögren et al., 1999; Yakar et al., 1999). In addition, serum levels of the acid-labile subunit (ALS) and IGFBP-3 are important in maintaining circulating IGF-I (Ohlsson et al., 2009). The importance of ALS was shown in the *Igfals* knock-out mouse model (Ueki et al., 2000) and by Domené et al. (2004) who reported the first homozygous mutation in human *IGFALS* causing severe IGF-I deficiency.

EFFECTS OF HUMAN GH-IGF AXIS MUTATIONS ON LINEAR GROWTH

Normal GH secretion and the functional integrity of the IGF system are essential for normal linear growth. Defects that have been identified to cause impaired growth are shown in **Table 1**. A summary of phenotypic and biochemical features in the range of GH-IGF-I axis defects is given in **Table 2**. Human pre-natal growth is regulated principally by nutritional supplies, which influence fetal IGF-I and, perhaps, IGF-II (Derr et al., 2011). Targeted disruption of either *Igf1* or *Igf2* in mice led to 40% reduction in fetal growth (Milward et al., 2004). The importance of normal IGF-I production in humans was confirmed by the pre-natal growth failure reported in patients with *IGF1* mutations (Jin et al., 2008;

Rowlinson et al., 2008). IGF-I action is also essential as demonstrated by IGFIR rodent knock-out studies (*Igf1r^{-/-}*) resulting in 55% reduction in fetal size (Milward et al., 2004), an effect also present in humans with mutations of *IGFIR* (Barclay et al., 2010). Post-natal growth may be disrupted by mutations that disturb the functional integrity of the cascade of GH-GHR interaction, GH signal transduction, and IGF-I production, transport, and

action (Rosenfeld et al., 1994; Savage et al., 2006). In states of GHI resulting from impaired GH-GHR function, IGF-I deficiency is the cardinal biochemical feature. In mutations specifically involving the *IGF1* or *IGFIR*, GHR function remains intact resulting in possible accentuation of IGF-I-independent GH effects and causing insulin resistance (Rowlinson et al., 2008).

MOLECULAR DEFECTS DISRUPTING THE IGF SYSTEM AND CAUSING GROWTH FAILURE

THE GH RECEPTOR

The GHR protein mediates the effects of GH on linear growth and metabolism. It is present ubiquitously, being most abundantly expressed in the liver (Chia et al., 2010) and is composed of a large extracellular domain involved in GH binding and GHR dimerization, a single transmembrane domain that anchors the receptor to the cell surface and an intracellular domain involved in GH signaling. GH binding activates its receptor by inducing a conformational change in a pre-existing GHR dimer (Adams et al., 2000; Wang and Jiang, 2005), which promotes the binding of Janus tyrosine kinase 2 (JAK2) to a proline-rich Box 1 region located in the proximal intracellular portion of the GHR (Fowden, 2003) and initiates intracellular signaling.

Since 1966, more than 250 patients with genetic GHI have been identified worldwide (Lupu et al., 2001; Savage et al., 2006). The most severe phenotype was described by Laron et al., 1966; *OMIM* #262500; Laron, 2004). Most GHI cases have autosomal recessive inheritance and in the vast majority a molecular defect has been identified involving homozygous or compound heterozygous mutations (Lupu et al., 2001). Over 70 mutations of *GHR* have been identified to date ranging from deletions to point mutations

Table 1 | Genetic defects involving the IGF system and disrupting linear growth.

Defects of the GH-IGF-I axis
GH receptor defects
Extracellular mutations
Transmembrane mutations
Intracellular mutations
GH signal transduction defects (STAT5b)
Mutations of SHP-2 (encoded by <i>PTPN11</i>)
<i>IGF1</i> mutations or deletions
Defects causing IGF-I deficiency
Bio-inactive IGF-I
Acid-labile subunit gene defects
IGF-I receptor (<i>IGFIR</i>) gene mutations
GH neutralizing antibodies in patients with <i>GHR</i> gene deletion

PTPN11, protein tyrosine phosphatase, non-receptor type 11; *SHP-2*, Src-homology region 2-domain phosphatase-2; *STAT*, signal transducer and activator of transcription.

Table 2 | Summary of phenotypic and biochemical features in the range of GH-IGF-I axis defects.

Gene defect phenotype	<i>GHR</i>	<i>STAT5b</i>	<i>PTPN11</i>	<i>IGF-I</i>	<i>IGFALS</i>	<i>IGFIR</i>	Bio-inactive GH	<i>GH1</i> with anti-GH antibodies
Severe growth failure	+/-	+	-	+	-	-	-	+
Mild growth failure	-/+	-	+	-	+	+	+	-
Mid-face hypoplasia	+/-	+/-	-	-	-	-	-	+
Other facial dysmorphism	-	-	+	+	-	+	-	-
Deafness	-	-	-	+	-	-	-	-
Microcephaly	-	-	-	+	-	+	-	-
Intellectual delay	-	-	-/+	+	-	+/-	-	-
Puberty delay	+/-	+/-	+/-	-	+	-	-	-
Immune deficiency	-	+	-	-	-	-	-	-
Hypoglycemia	+	-/+	-	-	-	-	-	-
Hyperinsulinemia	-	-	-	+	+	-	-	-
IGF-I deficiency	+	+	-/+	+/-	+	-	+	+
IGFBP-3 deficiency	+	+	-/+	-	+	-	+	+
ALS deficiency	+	+	-/+	-	+	-	+	+
GH excess	+	+	-	+/-	+	-	-	-
GHBP deficiency	+/-	-	-	-	-	-	-	-
Homozygous or compound heterozygous mutations	+	+	-	+	+	-	-/+	+
Heterozygous mutations	-	-	+	-	-	+	+/-	-

+, positive; -, negative; +/-, predominantly positive; -/+, predominantly negative; ALS, acid-labile subunit; IGFBP-3, IGF-binding protein-3; GHBP, growth hormone binding protein.

including missense, nonsense, and splice mutations (Woods et al., 1996a; Lupu et al., 2001; Savage et al., 2006). Among the defects causing aberrant *GHR* splicing, an intronic base change leading to the activation of a pseudoexon sequence and insertion of 36 new amino acids within the receptor extracellular domain was first reported in a consanguineous Pakistani family with mild GHI (Metherell et al., 2001). This mutation leads to recognition of the pseudoexon and inclusion of an additional 108 bases between exons 6 and 7 leading to impaired function of the mutant protein (Maamra et al., 2006). Intronic mutations resulting in pseudoexon activation are rare in genetic diseases (Akker et al., 2007). The phenotypes occurring with this mutation range from severe to mild growth failure (David et al., 2007). A mild phenotype of GHI is also associated with heterozygous *GHR* mutations causing a dominant-negative effect (Ayling et al., 1997; Iida et al., 1998). These splice site mutations (c.876 – 1G > C) and (c.945 + 1G > A) form heterodimers with the wild-type *GHR* and exert a dominant-negative effect on the normal protein.

Differing phenotypes within the same family may also occur, as reported with one sibling having extreme growth failure (adult height –8.7 SDS) and a second a milder phenotype (adult height –6.0 SDS; Milward et al., 2004). Both siblings had the same homozygous 22-bp deletion in the cytoplasmic domain of the *GHR*, resulting in a frameshift and premature stop codon. The resultant *GHR* was truncated at amino acid 449 (*GHR*1-449) after Box 1, the *JAK2* binding domain of the receptor, and functional studies in HEK293 and Chinese hamster ovary cells showed a selective loss of *STAT5* signaling in cells expressing *GHR*1-449 (Milward et al., 2004).

A mild phenotype was also reported in two patients with compound heterozygous mutations (Fang et al., 2007). Both had undisputed GHI but functional studies suggested incomplete *GHR* defects that determined the phenotype by an additive effect of each heterozygous mutation. A recent report described a child and his mother with short stature and elevated GH binding protein (*GHBP*) levels associated with a novel heterozygous C → A transversion at position c.785-3 at the acceptor site of intron 7 (Aalbers et al., 2009).

STAT5B MUTATIONS

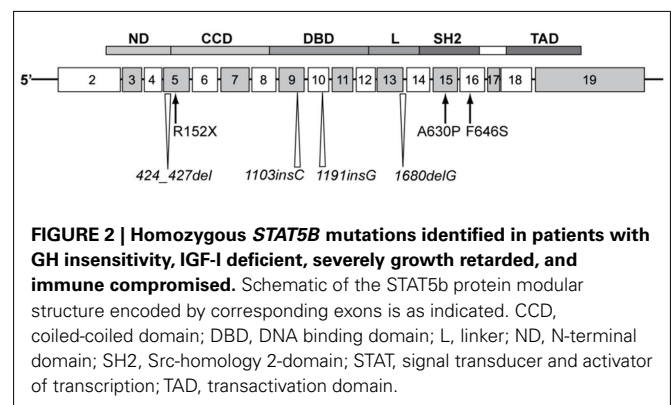
STAT5B mutations present a characteristic phenotype combining GHI and immunodeficiency (*OMIM* #245590). The binding of GH to the *GHR* activates signaling cascades that include a number of *STAT* pathways (*STAT1*, *STAT3*, *STAT5a*, and *STAT5b*). Molecular defects in GH signal transduction pathways appear to be very rare but recent identification of human *STAT5B* mutations causing severe growth failure, IGF-I deficiency, and GHI, demonstrated that *STAT5b* signaling is critical for GH-induced IGF-I production and normal linear growth (Rosenfeld et al., 2007).

In 2003, the first *STAT5B* mutation was identified in a 16-year-old female from a consanguineous Argentine family (Kofoed et al., 2003). Subsequent reports confirmed that birth weight in affected patients is generally normal, but is followed by severe post-natal growth failure, with resistance to GH therapy (Hwa et al., 2005, 2007; Bernasconi et al., 2006; Vidarsdottir et al., 2006). The biochemical profile shows normal or elevated GH secretion, normal *GHBP* values, and severe deficiencies of IGF-I, IGFBP-3, and ALS

which fail to increase on GH stimulation (Hwa et al., 2005, 2007; Bernasconi et al., 2006; Vidarsdottir et al., 2006). A key feature in all but one reported case (Vidarsdottir et al., 2006) was immune dysfunction. In several patients, repeated pulmonary infections occurred from infancy, including episodes of lymphoid interstitial pneumonia (Kofoed et al., 2003; Hwa et al., 2007), a condition associated with autoimmune disease. Interestingly, interferon-gamma (*IFN*γ), a cytokine that signals predominantly through the *STAT1* pathway, could also up-regulate IGF-I expression but only when *STAT5b* was present and fully functional (Hwa et al., 2004).

The unusual combination of GHI and immune dysfunction in the patient from Argentina led to the identification of a homozygous, missense, mutation in Exon 15 of the *STAT5B* gene (Kofoed et al., 2003). The single G to C transversion at nucleotide 1888 of the *STAT5B* mRNA resulted in an Ala630 (GCT) to Pro (CCT) substitution. Homology modeling with the solved structure of *STAT1* (Chen et al., 1998) showed that this mutation was within the critical SH2 domain, a well-characterized, conserved, regulatory module that functions by interacting with high affinity to phosphotyrosine-containing target peptides. The Ala630Pro (A630P) substitution was predicted to cause loss of thermodynamic stability as well as aberrant folding and aggregation of the mutant *STAT5b* protein (Chia et al., 2006). It is of note that pathogenic mutations in the SH2 domain of a number of cytoplasmic signaling peptides, including *STAT1*, have been associated with immuno-deficiencies, but none, except *STAT5b*, has been associated with severe growth retardation and IGF-I deficiency. Details of the human *STAT5B* mutations reported to date are shown in Figure 2.

Since the first report, six other human *STAT5B* mutations have been documented, with several found in siblings (Pugliese-Pires et al., 2010). In contrast to mutations in *IGF1* (see below), brain development, and cognitive functions appeared to be normal. The seven *STAT5B* mutations, located in different domains of the *STAT5b* protein, comprise two missense mutations, p.A630P and p.F646S, a nonsense mutation, p.R152X, single nucleotide insertions, c.1191insG and c.1103insC, nucleotide deletions c.1680delG and c.424_427del. The insertion/deletion mutations result in frameshifts and truncation of the *STAT5b* protein. All reported mutations were homozygous and autosomal recessive. The phenotype of *STAT5b*-deficient patients includes profound short stature and delayed puberty in the older subjects. The only patient without



obvious immune deficiency, the first reported male proband, contracted hemorrhagic varicella at 16 years of age and had congenital ichthyosis, but, otherwise, appeared healthy (Vidarsdottir et al., 2006). One other patient was diagnosed with juvenile idiopathic arthritis at the young age of 2 years. Immunological evaluations reported for one of the patients carrying p.R152X, indicated lymphopenia and abnormally low regulatory T cells, similar to the proband carrying the p.A630P mutation (Cohen et al., 2006). It is also of note that *STAT5b* deficiency was associated with abnormally high levels of circulating prolactin in six of the cases. It remains unclear whether the hyperprolactinemia is a direct or indirect consequence of *STAT5B* mutations.

IGF1 MUTATIONS

The first human *IGF1* defect was described by Woods et al., 1996b; *OMIM* #608747). Features of patients with *IGF-I* defects are shown in **Table 3**. The first patient, a male, was born by Caesarian section because of poor fetal growth. Placental weight was diminished (350 g) and he had severe intrauterine growth retardation (IUGR) with a birth weight of 1.4 kg (−3.9 SDS), birth length of 37.8 cm (−5.4 SDS), and microcephaly (head circumference 27 cm, −4.9 SDS). His growth failure worsened post-natally and at 15.8 years, his height was 119.1 cm (−6.9 SDS), and his weight was 23.0 kg (−6.5 SDS). He had delayed psychomotor development and sensorineural deafness. During adolescence he became insulin resistant. No IGF-I was detected in the serum even after 4 days of stimulation with GH in an IGF-I generation test (IGFGT). Spontaneous 12-h GH secretion showed abnormally elevated baseline and peaks. ALS and IGFBP-3 values were normal. Molecular analysis revealed a homozygous deletion of exons 4 and 5 of the *IGF1* gene. If translated, the resulting protein would be severely truncated, lacking 45 of the 70 IGF-I amino acids (Woods et al., 1996b). At 16.1 years (bone age, 14.2 years), recombinant IGF-I therapy was initiated and resulted in beneficial effects on insulin sensitivity, body composition, bone size, and linear growth (Camacho-Hübner et al., 1999; Woods et al., 2000).

Features of IUGR, microcephaly, retarded intellectual development and severe post-natal growth failure were present in the other cases with homozygous *IGF1* mutations (Bonapace et al., 2003; Walenkamp et al., 2005; Netchine et al., 2009). Deafness was present in all the cases except the child with the mildest phenotype (Netchine et al., 2009). The microcephaly shown by these patients, is a cardinal feature of the phenotype and allows a distinction with Russell–Silver syndrome patients, who have a relative macrocephaly (Netchine et al., 2007). There has been some variation of serum IGF-I levels in the reported *IGF1* mutation cases. The third case to be described (Walenkamp et al., 2005) shared an identical clinical phenotype with the index case (Woods et al., 1996b), and had a younger brother with similar features who died in childhood. This patient had a serum IGF-I level that was significantly increased (+7.3 SDS), explained by the fact that the patient's homozygous missense mutation of *IGF1*, a G → A nucleotide substitution at position 274, changing valine at position 44 in the A domain of the mature IGF-I protein to methionine (p.V44M), resulted in a recombinant protein (IGF1 V44M) which allowed normal binding to IGFBP-3 but decreased affinity (90-fold) for its receptor, IGF1R. This patient therefore had bio-inactive IGF-I

caused by an *IGF1* mutation. Serum IGF-I levels in the fourth patient who had a relatively mild phenotype were also variable and not severely decreased (Netchine et al., 2009). In all reported subjects serum IGFBP-3 and ALS levels have been normal or elevated.

Genetic analysis of *IGF1* in the second case (Bonapace et al., 2003) showed a homozygous T → A transversion in exon 6, that would result if translated into an altered E domain of the IGF-I precursor. It has been argued that this variant may be a polymorphism and thus not causative of the patient's phenotype, which was nevertheless strikingly similar to the other cases. In the patient with the mild phenotype, sequencing of *IGF1* revealed a homozygous missense mutation resulting in the change of a highly conserved arginine located in the C domain of the protein into a glutamine (p.R36Q). Affinity for the IGF1R decreased two to threefold, resulting in decreased IGF1R autophosphorylation. This partially diminished IGF-I activity had marked consequences for fetal growth and development (Netchine et al., 2009).

IGFALS MUTATIONS

IGFALS mutations are associated with GHI and severe ALS and IGF-I deficiencies (*OMIM* #601489). The ALS is a soluble protein and member of the leucine-rich repeat family, and is expressed by hepatocytes and secreted into the blood stream (Leong et al., 1992). GH is the main inducer of ALS synthesis (Ooi et al., 1997) and in the circulation ALS can be found free or bound to IGF-I or -2 and IGFBP-3 or -5, to form a ternary complex (Baxter, 1994), which prevents IGFs, free or bound to IGFbps, from leaving the circulation, thus prolonging their half-lives and decreasing their availability at a tissue level. ALS is encoded by the *IGFALS*, located on chromosome 16p13.3 and spanning 3.3 Kb. Inactivation of the *IGFALS* in mice results in absence of circulating ALS but only modest growth failure despite marked reduction of serum IGF-I and IGFBP-3 levels (Ueki et al., 2000).

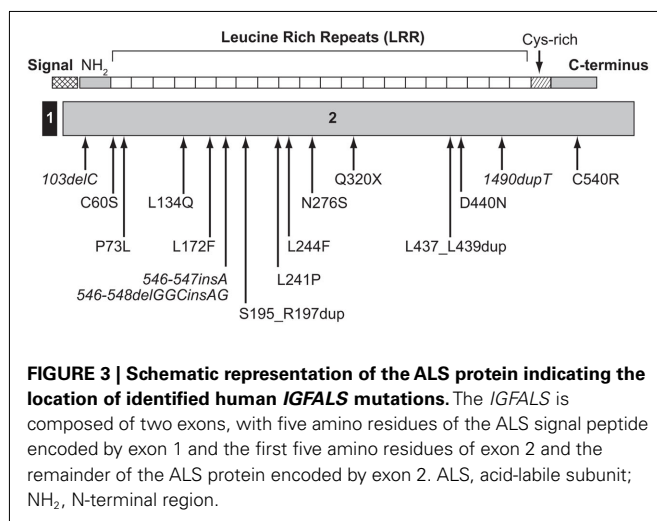
The first patient with a homozygous mutation of *IGFALS* was reported by Domené et al. (2004) and presented a new combination of genetic, biochemical, and phenotypic data. The most striking feature of this genetic defect causing GHI was a mismatch between extreme deficiencies of circulating IGF-I, IGFBP-3, and ALS and relatively mild growth failure, even leading to a normal adult height in some patients (Domené et al., 2007). A recent review of published cases confirms these features (Domené et al., 2009). Sixteen different mutations of the human *IGFALS* gene (**Figure 3**) have been identified in 21 cases (Domené et al., 2009). Eleven were homozygous and six were compound heterozygous with autosomal recessive inheritance. *IGFALS* mutations have included missense and nonsense mutations, deletions, duplications, and insertions resulting in frameshift and premature stop codons and in-frame duplication mutations leading to insertion of extra amino acid residues (Domené et al., 2009). In all cases, there was extreme deficiency of circulating ALS, with inability to form the ternary complex (Domené et al., 2009; David et al., 2010). Whereas circulating levels of IGF-I and IGFBP-3 are severely reduced, due to their rapid clearance, local production of IGF-I in peripheral tissues, notably the growth plate, appears to be preserved or even increased due to up-regulation of GH secretion (Domené et al., 2004). Insulin resistance, with hyperinsulinemia

Table 3 | Characteristics of six cases with *IGF1* defects.

	Woods et al. (1996b)	Bonapace et al. (2003)	Walenkamp et al. (2005)	Netchine et al. (2009)	van Duyven- voorde et al. (2010)	van Duyven- voorde et al. (2010)
OBSERVATION						
Sex	Male	Male	Male	Male	Female	Male
Consanguinity	Yes	Yes	Yes	Yes	No	No
Birth weight (SDS/g)	-3.9/1400	-4.0/1480	-2.5/1420	-2.5/2350	-2.9/2300	-1.2/3300
Birth length (SDS/cm)	-5.4/37.8	-6.5/41	-3/39	-3.7/44	-3.8/44.0	-1.0/50.0
Cranial circumference (SDS/cm)	-4.9/27	-7.5/26.5	-8.0/44.2	-2.5/32	-2.4/47.8	-1.6/49.0
Growth (SDS)	-6.9 at 16 years	-6.2 at 1.6 years	-9 at 55 years	-4.5 at 3 years	-4.1 at 8.2 years	-4.6 at 6.2 years
Microcephaly	Yes	Yes	Yes	Yes	Yes	Mild
Development delay	Yes	Yes	Yes	Mild	Yes	No
Deafness	Yes	Yes	Yes	No	No	No
Adiposity	Yes	No	Yes	No	No	No
HORMONAL EVALUATION						
IGF-I levels	Undetectable	1.0 ng/mL	+7.3 SDS	Variable	-2.3 SDS	-2.6 SDS
IGFBP-3 levels	3.3 mg/L	3.6 mg/L	1.98 mg/L (+0.1 SDS)	4.3 mg/L	+1.2 SDS	+0.1 SDS
Molecular defect	Hom p.? (Del ex 4-5)	Hom p.? **	Hom p.V44M	Hom p.R36Q	Het <i>c.243-</i> <i>246dupCAGC</i>	Het <i>c.243-</i> <i>246dupCAGC</i>
IGF1R affinity	Zero	Not studied	Extremely low	Partially reduced	Not studied	Not studied

IGFBP-3, IGF-binding protein-3; *SDS*, standard deviation score; *Hom*, homozygous defect; *Het*, single heterozygous defect.

**This mutation is localized within the polyadenylation site and alters mRNA splicing. The 3' end of the resulting aberrant *IGF1* transcript contains a partial sequence from the downstream gene *KIAA0537*.



and low *IGFBP-1*, has also been described in these patients (Heath et al., 2008; Domené et al., 2009).

Recently attention has focused on the possible effect of heterozygous *IGFALS* mutations on growth. An analysis of 21 patients with homozygous or compound heterozygous *IGFALS* mutations and their family members who were either heterozygous carriers or homozygous wild-type normal has recently been published (Fofanova-Gambetti et al., 2010). Mean height SDS was -2.31 ± 0.87 in the homozygous *IGFALS* mutation patients. Analyses within individual families showed that

heterozygosity for *IGFALS* mutations resulted in approximately 1.0 SD height loss in comparison with wild-type, whereas homozygosity or compound heterozygosity resulted in a further loss of 1.0–1.5 SD, suggestive of a gene-dosage effect.

IGFIR MUTATIONS

IGFIR mutations are characterized by IGF-I resistance causing impaired fetal and post-natal growth (*OMIM* #270450). The *IGFIR* is a transmembrane receptor and belongs to the insulin receptor family, which includes the *IGF2R* and insulin receptor. The *IGFIR* is expressed widely and binds IGF-I and -2 with high affinity, mediating their biological actions by activating a complex intracellular signaling cascade leading to the transcription of IGF target genes. The *IGF1R* gene is located on chromosome 15q26.3 and spans 315 kb.

Mutations in *IGF1R* were first reported by Abuzzahab et al. (2003) following analysis of DNA from cohorts of children with short stature and unexplained IUGR. The first child was a compound heterozygote for point mutations in exon 2 of the *IGFIR* gene that altered the amino acid sequence to p.R108Q in one allele and p.K115N in the other. She had a birth weight of -3.5 SD with childhood short stature and an adult height of -4.8 SD. The second patient, a boy, had a heterozygous nonsense mutation (p.R59X) that reduced the number of *IGF1R*s on fibroblasts. He also had low birth weight (-3.5 SD) and birth length (-5.8 SD) with microcephaly and post-natal growth failure (height -3.8 SD) at age 14 months and some additional dysmorphic features.

Serum IGF-I levels were normal or elevated in both patients and GH secretion was within normal limits.

There have been several reports of familial short stature due to *IGF1R* mutations. A heterozygous mutation in the cleavage site of the proreceptor of *IGF1R* was reported in a 6-year-old Japanese girl and her mother (Kawashima et al., 2005) and the group of Wit in Leiden described a mother and daughter with a heterozygous missense mutation in the intracellular part of the *IGF1R* (Walenkamp et al., 2006). A 9-year-old male patient (height -3.6 SD), his sister (height -1.94 SD and IUGR), and his mother (height -4.6 SDS) carried the same *IGF1R* mutation which was a novel heterozygous 19-nucleotide duplication in exon 18 (Fang et al., 2009). Functional studies in primary dermal fibroblasts derived from the patient and family members indicated that *IGF1R* mRNA expressed from the mutant allele was degraded through the nonsense-mediated mRNA decay pathway resulting in reduced amount of wild-type IGF1R protein and, subsequently, diminished activation of the IGF1R pathway. A further female child was reported with a heterozygous missense mutation in the highly conserved N-terminal fibronectin type III domain of *IGF1R* with functional studies demonstrating impaired post-receptor IGF-I signaling (Inagaki et al., 2007).

GH1 MUTATIONS CAUSING BIOLOGICALLY INACTIVE GH

Certain *GH1* mutations cause biologically inactive GH resulting in a form of GHI (*OMIM* #262650). A syndrome of biologically inactive GH causing GHI and short stature was first described by Kowarski et al. (1978). The molecular basis of this apparently rare cause of GHI was clarified by Takahashi et al. (1996, 1997) who reported two cases with heterozygous mutations in the *GH1* gene. The first case was a boy with severe short stature (height -6.1 SD) who had increased immunoassayable GH and IGF-I deficiency, which responded, as did his growth, to exogenous hGH therapy. The mutation was a single-base missense substitution (p.R77G) in exon 4 of the *GH1*. However his normal stature father also had the same mutation. Functional studies demonstrated that the mutant GH molecule had higher binding affinity for the GHR and inhibited its activation by wild-type GH in a dominant-negative fashion, thus impairing GH bioactivity. The second case was a girl with similar endocrine features and short stature associated with a heterozygous single-base change (A \rightarrow G) causing a p.D112G substitution in *GH1*. More recently, a child with short stature (height -3.6 SD at age 9 years) from a consanguineous Serbian family was reported to have a homozygous missense mutation, C53S, of *GH1* leading to the absence of the disulfide bridge Cys-53 to Cys-165 in the GH molecule (Besson et al., 2005).

GH1 GENE DELETIONS (TYPE IA GH DEFICIENCY) WITH ANTI-GH ANTIBODIES

A rare form of GHI occurs due to acquired GH-inhibiting antibodies in a category of children with familial isolated GH deficiency (IGHD; *OMIM* #262400; Cogan and Phillips, 2006). Autosomal recessive IGHD, caused by gross deletions of the *GH1*, result in severe IGHD (Type IA) with undetectable GH secretion (Phillips et al., 1981). Such patients have severe post-natal growth failure with height usually <-4.5 SD. Most of the *GH1* deletions are 6.7, 7.0, or 7.6 kb in length, although several of 45 kb have

been reported (Proctor et al., 1998). Microdeletions and frameshift mutations have also been reported (Baumann, 2002; Cogan and Phillips, 2006; Alatzoglou and Dattani, 2010). IGHD patients with homozygous deletions of the *GH1* gene frequently develop anti-GH antibodies during treatment with GH due to immunological intolerance. However, variability of both antibody formation and response to GH therapy may occur, even within families (Proctor et al., 1998). Rare homozygous microdeletions and single base-pair substitutions in the *GH1* coding region have also resulted in anti-GH antibody formation during GH therapy. The formation of anti-GH antibodies neutralizes the growth response to GH therapy, resulting in a state of GHI associated with severe short stature. Such patients may respond to therapy with recombinant human IGF-I, which becomes the only effective management for their growth failure (Riedl and Frisch, 2006).

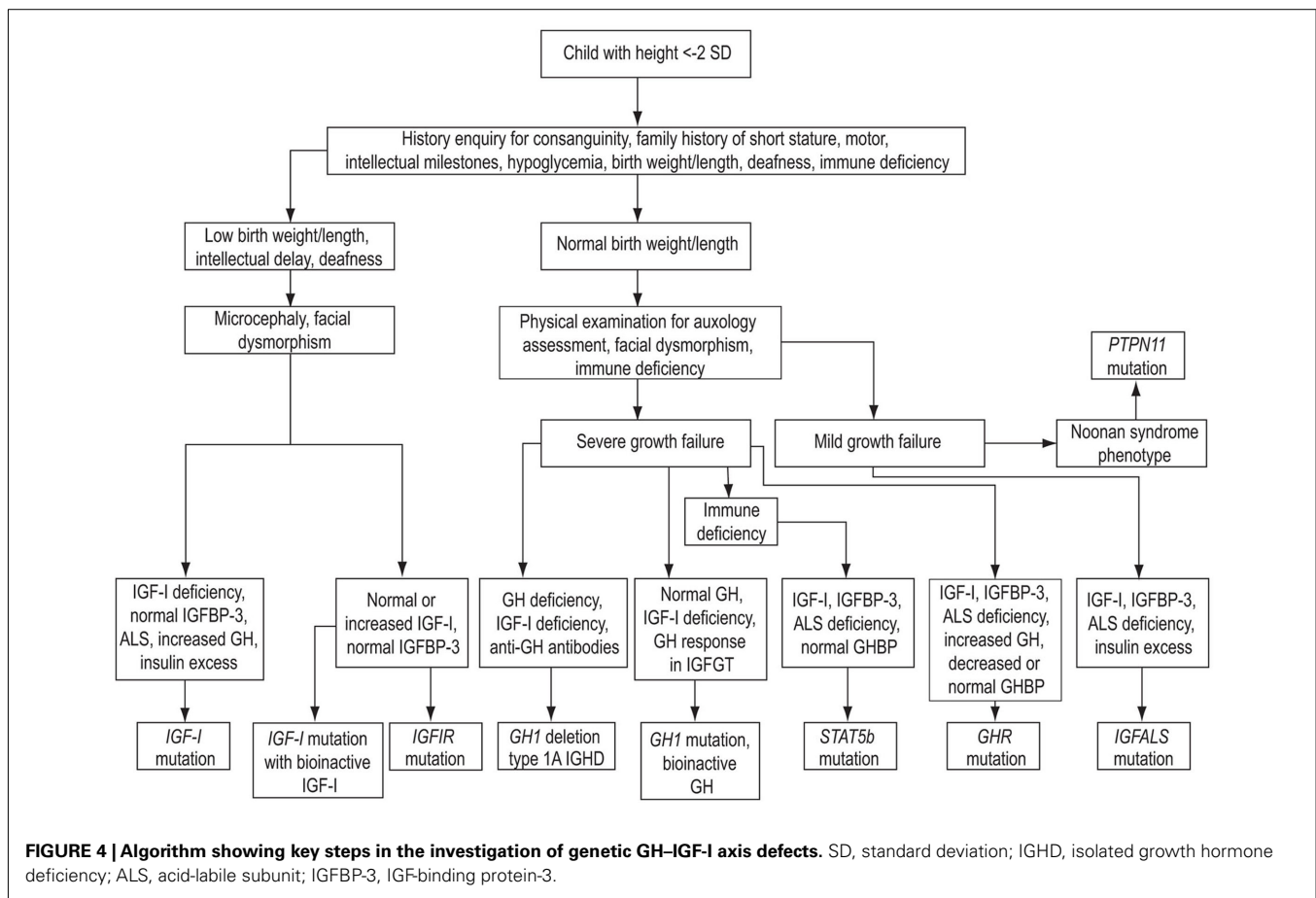
THE INVESTIGATION OF GH-IGF-I AXIS MUTATIONS

The evaluation of a child with short stature and a possible GH-IGF-I axis mutation should comply with the classical paradigm of clinical assessment followed by general (i.e., non-endocrine) investigations, hormonal assessment, and appropriate genetic analyses. An algorithm showing key steps in the investigation of genetic GH-IGF-I axis defects is shown in **Figure 4**. As advances in molecular endocrinology related to growth disorders progress, the crucial importance of detailed phenotypic evaluation and documentation becomes increasingly important. The urge to obtain a possible molecular diagnosis at the onset of the investigations should be resisted until detailed clinical and endocrine evaluation has been performed. Clinical assessment should include enquiries about family history of growth disturbance, consanguinity, birth weight and length, and recurrent infections (Savage et al., 2010). Examination should specifically assess the presence of possible facial dysmorphic features and microcephaly in addition to anthropometric evaluation (Cohen et al., 2008).

INVESTIGATIONS OF THE GH-IGF-I AXIS

Investigations of the GH-IGF-I axis consist of determination of GH secretion and exploration of the IGF system. A GH provocation test is recommended unless the child has normal auxology or a basal IGF-I level above the mean for age (Cohen et al., 2008). In a child with clinical criteria of GHD, a peak GH level of <10 ng/mL has traditionally been used to support this diagnosis (Growth Hormone Research Society, 2000). Basal IGF-I levels should also be determined, although these may be influenced by factors such as age, nutrition, chronic illness, and puberty. In the initial assessment, IGFBP-3 adds little, except in children under 3 years of age, where low IGFBP-3 is helpful in the diagnosis of GHD (Cianfarani et al., 2005). Reliable assay performance and appropriate normative data (Juul et al., 1994, 1995) are essential for the use of IGF-I and IGFBP-3 in clinical practice, and adjustment for sex, age, puberty, and nutritional status is recommended.

A diagnosis of GHI follows from the demonstration of abnormal auxology, normal GH secretion, and IGF-I deficiency. However, the pathogenesis will not have been elucidated from these investigations. The nature of the defect can often be defined by additional measurement of IGFBP-3, ALS, and GHBP (Savage et al., 2010). In *GHR* defects IGF-I, IGFBP-3, and ALS are decreased



(Burren et al., 1999), although the degree of abnormality can vary with the type of mutation, which also influences GHBP levels. GH secretion is elevated in most patients with severe IGF-I deficiency.

THE IGF-I GENERATION TEST

The principle behind the design of the IGFGT was that repeated injections of GH induce measurable increases of IGF-I, IGFBP-3, and ALS secretion. However, in GH deficiency patients, the degree of IGF-I response did not convincingly predict the growth response to GH therapy (Rosenfeld et al., 1981). Normative data were not established and the test is not used for this purpose. Interest in the IGFGT was renewed when molecular evidence of GHI was demonstrated and subjects were selected for rhIGF-I therapy. Criteria for diagnosis of GHI were defined as: failure to increase IGF-I and IGFBP-3 by >15 and 400 ng/mL, respectively (Blum et al., 1994; Woods et al., 1997). However, as the spectrum of GHI disorders expanded, these criteria are now too strict for mildly affected subjects and even in severe GHI patients, post-GH increases of IGF-I ranged from <20 to 58 ng/mL and of IGFBP-3 from 95 to 1762 ng/mL (Rosenfeld, 2005). Attempts to refine the IGFGT for the diagnosis of milder GHI have demonstrated that patients with idiopathic short stature produced a subnormal response (Selva et al., 2003) and subjects with IGF-I deficiency and normal GH secretion also had subnormal ability to generate IGF-I (Midyett et al., 2010). However, additional sensitivity for the

diagnosis of GH resistance was not seen with a low-dose GH protocol (Buckway et al., 2001). A lack of reproducibility of IGF-I and IGFBP-3 responses in the IGFGT has also been reported (Jorge et al., 2002). For this reason genetic analysis and assessment of the growth response to GH therapy, especially in patients without the classical GHI phenotype, should be performed to confirm GH resistance. The principal value of the IGFGT is the confirmation of extreme or severe GHI (Rosenfeld et al., 1994; Woods et al., 1997).

GENETIC INVESTIGATIONS

The discussions above have indicated that genetic mutations in the GH–IGF-I axis make a major contribution to the pathogenesis of GHI. Following clinical and biochemical assessment and where a genetic cause of short stature is expected from the family history, DNA analysis for key candidate genes can confirm a genetic diagnosis. A hierarchy and priority of molecular tests can be defined following careful clinical and biochemical assessment. Testing for molecular defects in the GH–IGF-I axis is not commercially available at the present time. However, there are a number of academic laboratories that perform DNA sequencing studies of the relevant candidate genes. *In vitro* functional studies may also be necessary to quantitate the degree of protein dysfunction, particularly in cases with a milder phenotype. There are many components of the GH and IGF signaling cascades that remain poorly understood and are legitimate candidates for harboring significant mutations and/or deletions. Thus the absence of identifiable mutations in the

candidate genes described above cannot rule out the possibility of a molecular abnormality of the GH-IGF axis.

Ideally family members should also be tested. It is now clear that members of the same family with the same mutations may have differing phenotypes (Milward et al., 2004). Additionally, for many of the autosomal recessive disorders described above, the issue of heterozygous expression remains of great interest and is worthy of further study (Fofanova-Gambetti et al., 2010; van Duyvenvoorde et al., 2010).

CONCLUSION

From the fundamental importance of the GH-IGF axis in human linear growth, it follows that defects at many points in this axis

REFERENCES

- Aalbers, A. M., Chin, D., Pratt, K. L., Little, B. M., Frank, S. J., Hwa, V., and Rosenfeld, R. G. (2009). Extreme elevation of serum growth hormone-binding protein concentrations resulting from a novel heterozygous splice site mutation of the growth hormone receptor gene. *Horm. Res.* 71, 276–284.
- Abuzzahab, M. J., Schneider, A., Goddard, A., Grigorescu, F., Lautier, C., Keller, E., Kiess, W., Klammt, J., Kratzsch, J., Osgood, D., Pfäffle, R., Raile, K., Seidel, B., Smith, R. J., and Chernausek, S. D. (2003). IGF-I receptor mutations resulting in intrauterine and postnatal growth retardation. *N. Engl. J. Med.* 349, 2211–2222.
- Adams, T. E., Epa, V. C., Garrett, T. P., and Ward, C. W. (2000). Structure and function of the type 1 insulin-like growth factor receptor. *Cell. Mol. Life Sci.* 57, 1050–1093.
- Akker, S. A., Misra, S., Aslam, S., Morgan, E. L., Smith, P. J., Khoo, B., and Chew, S. L. (2007). Pre-spliceosomal binding of U1 small nuclear ribonucleoprotein (RNP) and heterogeneous nuclear RNP E1 is associated with suppression of a growth hormone receptor pseudoxon. *Mol. Endocrinol.* 21, 2529–2540.
- Alatzoglou, K. S., and Dattani, M. T. (2010). Genetic causes and treatment of isolated growth hormone deficiency—an update. *Nat. Rev. Endocrinol.* 6, 562–576.
- Amselem, S., Duquesnoy, P., Attree, O., Novelli, G., Bousnina, S., Postel-Vinay, M. C., and Goossens, M. (1989). Laron dwarfism and mutations of the growth hormone-receptor gene. *N. Engl. J. Med.* 321, 989–995.
- Ayling, R. M., Ross, R., Towner, P., Von Laue, S., Finidori, J., Moutousamy, S., Buchanan, C. R., Clayton, P. E., and Norman, M. R. (1997). A dominant-negative mutation of the growth hormone receptor causes familial short stature. *Nat. Genet.* 16, 13–14.
- Barclay, J. L., Kerr, L. M., Arthur, L., Rowland, J. C., Nelson, C. N., Ishikawa, M., d'Aniello, E. M., White, M., Noakes, P. G., and Waters, M. J. (2010). In vivo targeting of the growth hormone receptor (GHR) Box1 sequence demonstrates that the GHR does not signal exclusively through JAK2. *Mol. Endocrinol.* 24, 204–217.
- Baumann, G. (2002). Genetic characterization of growth hormone deficiency and resistance: implications for treatment with recombinant growth hormone. *Am. J. Pharmacogenomics* 2, 93–111.
- Baxter, R. C. (1994). Insulin-like growth factor binding proteins in the human circulation: a review. *Horm. Res.* 42, 140–144.
- Bernasconi, A., Marino, R., Ribas, A., Rossi, J., Ciaccio, M., Oleastro, M., Ornani, A., Paz, R., Rivarola, M., Zelazko, M., and Belgorosky, A. (2006). Characterization of immunodeficiency in a patient with growth hormone insensitivity secondary to a novel STAT5b gene mutation. *Pediatrics* 118, e1584–e1592.
- Besson, A., Salemi, S., Deladoëy, J., Vuissoz, J.-M., Eblé, A., Bidlingmaier, M., Bürgi, S., Honegger, U., Flück, C., and Mullis, P. E. (2005). Short stature caused by a biologically inactive mutant growth hormone (GH-C53S). *J. Clin. Endocrinol. Metab.* 90, 2493–2499.
- Blum, W. F., Cotterill, A. M., Postel-Vinay, M.-C., Ranke, M. B., Savage, M. O., and Wilton, P. (1994). Improvement of diagnostic criteria in growth hormone insensitivity syndrome: solutions and pitfalls. Pharmacia Study Group on insulin-like growth factor I treatment in growth hormone insensitivity syndromes. *Acta Paediatr. Suppl.* 399, 117–124.
- Bonapace, G., Concolino, D., Formicola, S., and Strisciuglio, P. (2003). A novel mutation in a patient with insulin-like growth factor 1 (IGF1) deficiency. *J. Med. Genet.* 40, 913–917.
- Buckway, C. K., Guevara-Aguirre, J., Pratt, K. L., Burren, C. P., and Rosenfeld, R. G. (2001). The IGF-I generation test revisited: a marker of GH sensitivity. *J. Clin. Endocrinol. Metab.* 86, 5176–5183.
- Burren, C. P., Wanek, D., Mohan, S., Cohen, P., Gievara-Aguirre, J., and Rosenfeld, R. G. (1999). Serum levels of insulin-like growth factor binding proteins in Ecuadorean children with growth hormone insensitivity. *Acta Paediatr. Suppl.* 88, 185–191.
- Camacho-Hübner, C., Woods, K. A., Miraki-Moud, F., Hindmarsh, P. C., Clark, A. J., Hansson, Y., Johnston, A., Baxter, R. C., and Savage, M. O. (1999). Effects of recombinant human insulin-like growth factor-I (IGF-I) therapy on the growth hormone-IGF system of a patient with partial IGF-I gene deletion. *J. Clin. Endocrinol. Metab.* 84, 1611–1616.
- Chen, X., Vinkemeier, U., Zhao, Y., Jeruzalmi, D., Darnell, J. E. Jr., and Kuriyan, J. (1998). Crystal structure of a tyrosine phosphorylated STAT-1 dimer bound to DNA. *Cell* 93, 827–839.
- Chia, D. J., Subbian, E., Buck, T. M., Hwa, V., Rosenfeld, R. G., Skach, W. R., Shinde, U., and Rotwein, P. (2006). Aberrant folding of a mutant STAT5b causes growth hormone insensitivity and proteasomal dysfunction. *J. Biol. Chem.* 281, 6552–6558.
- Chia, D. J., Varco-Merth, B., and Rotwein, P. (2010). Dispersed chromosomal Stat5b-binding elements mediate growth hormone-activated insulin-like growth factor-I gene transcription. *J. Biol. Chem.* 285, 17636–17646.
- Cianfarani, S., Liguori, A., Boemi, S., Maghnie, M., Lughetti, L., Wasniewska, M., Street, M. E., Zucchini, S., Aimareti, G. L., and Germani, D. (2005). Inaccuracy of insulin-like growth factor (IGF) binding protein (IGFBP-3) assessment in the diagnosis of growth hormone (GH) deficiency from childhood to young adulthood: association to low GH dependency of IGF-II and presence of circulating IGFBP-3 18-kilodalton fragment. *J. Clin. Endocrinol. Metab.* 90, 6028–6034.
- Cogan, J. D., and Phillips, J. A. III. (2006). GH1 gene deletions, and IGHD type 1A. *Pediatr. Endocrinol. Rev.* 3, 480–488.
- Cohen, A. C., Nadeau, K. C., Tu, W., Hwa, V., Dionis, K., Bezrodnik, L., Teper, A., Gaillard, M., Heinrich, J., Krensky, A. M., Rosenfeld, R. G., and Lewis, D. B. (2006). Cutting edge: decreased accumulation and regulatory function of CD4+CD25high T cells in human STAT5b deficiency. *J. Immunol.* 177, 2770–2774.
- Cohen, P., Rogol, A. D., Deal, C. L., Saenger, P., Reiter, E. O., Ross, J. L., Chernausek, S. D., Savage, M. O., Wit, J. M., and on behalf of the 2007 ISS Consensus Workshop participants. (2008). Consensus statement on the diagnosis and treatment of children with idiopathic short stature: a summary of the Growth Hormone Research Society, the Lawson Wilkins Pediatric Endocrine Society, and the European Society for Paediatric Endocrinology Workshop. *J. Clin. Endocrinol. Metab.* 93, 4210–4217.
- David, A., Camacho-Hübner, C., Bhangoo, A., Rose, S. J., Miraki-Moud, F., Akker, S. A., Butler, G. E., Ten, S., Clayton, P. E., Clark, A. J. L., Savage, M. O., and Metherell, L. A. (2007). An intronic growth hormone receptor mutation causing activation of a pseudoxon is associated with a broad spectrum of growth hormone insensitivity phenotypes. *J. Clin. Endocrinol. Metab.* 92, 655–659.

- David, A., Rose, S. J., Miraki-Moud, F., Metherell, L. A., Savage, M. O., Clark, A. J. L., and Camacho-Hübner, C. (2010). Acid-labile subunit deficiency and growth failure: description of two novel cases. *Horm. Res. Paediatr.* 73, 328–334.
- Derr, M. A., Fang, P., Sinha, S. K., Ten, S., Hwa, V., and Rosenfeld, R. G. (2011). A novel Y332C missense mutation in the intracellular domain of the human growth hormone receptor (GHR) does not alter STAT5b signaling: redundancy of GHR intracellular tyrosines involved in STAT5b signaling. *Horm. Res. Pediatr.* 75, 187–199.
- Domené, H. M., Bengolea, S. V., Martínez, A. S., Ropelato, M. G., Pennisi, P., Scaglia, P., Heinrich, J. J., and Jasper, H. G. (2004). Deficiency of the circulating insulin-like growth factor system associated with inactivation of the acid-labile subunit gene. *N. Engl. J. Med.* 350, 570–577.
- Domené, H. M., Hwa, V., Argente, J., Wit, J. M., Camacho-Hübner, C., Jasper, H. G., Pozo, J., van Duyvenvoorde, H. A., Yakar, S., Fofanova-Gambetti, O. V., Rosenfeld, R. G., and International ALS Collaborative Group. (2009). Human acid-labile subunit deficiency: clinical, endocrine and metabolic consequences. *Horm. Res. Pediatr.* 72, 129–141.
- Domené, H. M., Martínez, A. S., Frystyk, J., Bengolea, S. V., Ropelato, M. G., Scaglia, P. A., Chen, J. W., Heuck, C., Wolthers, O. D., Heinrich, J. J., and Jasper, H. G. (2007). Normal growth spurt and final height despite low levels of all forms of circulating insulin-like growth factor-I in a patient with acid-labile subunit deficiency. *Horm. Res.* 67, 243–249.
- Eshet, R., Laron, Z., Pertzlan, A., Arnon, R., and Dintzman, M. (1984). Defect of human growth hormone receptors in the liver of two patients with Laron-type dwarfism. *Isr. J. Med. Sci.* 20, 8–11.
- Fang, P., Riedl, S., Amselem, S., Pratt, K. L., Little, B. M., Haeusler, G., Hwa, V., Frisch, H., and Rosenfeld, R. G. (2007). Primary growth hormone (GH) insensitivity and insulin-like growth factor deficiency caused by novel compound heterozygous mutations of the GH receptor gene: genetic and functional studies of simple and compound heterozygous states. *J. Clin. Endocrinol. Metab.* 92, 2223–2231.
- Fang, P., Schwartz, I. D., Johnson, B. D., Derr, M. A., Roberts, C. T. Jr., Hwa, V., and Rosenfeld, R. G. (2009). Familial short stature caused by haploinsufficiency of the insulin-like growth factor I receptor due to nonsense-mediated messenger ribonucleic acid decay. *J. Clin. Endocrinol. Metab.* 94, 1740–1747.
- Fofanova-Gambetti, O. V., Hwa, V., Wit, J. M., Domene, H. M., Argente, J., Bang, P., Högl, W., Kirsch, S., Pihoker, C., Chiu, H. K., Cohen, L., Jacobsen, C., Jasper, H. G., Haeusler, G., Campos-Barros, A., Gallego-Gómez, E., Gracia-Bouthelier, R., van Duyvenvoorde, H. A., Pozo, J., and Rosenfeld, R. G. (2010). Impact of heterozygosity for acid-labile subunit (IGFALS) gene mutations on stature: results from the international acid-labile subunit consortium. *J. Clin. Endocrinol. Metab.* 95, 4184–4191.
- Fowden, A. L. (2003). The insulin-like growth factors and fetoplacental growth. *Placenta* 24, 803–812.
- Godowski, P. J., Leung, D. W., Meacham, L. R., Galgani, J. P., Hellmiss, R., Keret, R., Rotwein, P. S., Parks, J. S., Laron, Z., and Wood, W. I. (1989). Characterization of the human growth hormone receptor gene and demonstration of a partial gene deletion in two patients with Laron-type dwarfism. *Proc. Natl. Acad. Sci. U.S.A.* 86, 8083–8087.
- Green, H., Morikawa, M., and Nixon, T. (1985). A dual effector theory of growth-hormone action. *Differentiation* 29, 195–198.
- Growth Hormone Research Society. (2000). Consensus guidelines for the diagnosis and treatment of growth hormone (GH) deficiency in childhood and adolescence: summary statement of the GH Research Society. *J. Clin. Endocrinol. Metab.* 85, 3990–3993.
- Han, V. K., Lund, P. K., Lee, D. C., and D'Ercole, A. J. (1988). Expression of somatomedin/insulin-like growth factor messenger ribonucleic acids in the human fetus: identification, characterization, and tissue distribution. *J. Clin. Endocrinol. Metab.* 66, 422–429.
- Heath, K. E., Argente, J., Barrios, V., Pozo, J., Díaz-González, F., Martos-Moreno, G. A., Caimari, M., Gracia, R., and Campos-Barros, A. (2008). Primary acid-labile subunit deficiency due to recessive IGFALS mutations results in postnatal growth deficit associated with low circulating insulin growth factor (IGF)-I, IGF binding protein-3 levels, and hyperinsulinemia. *J. Clin. Endocrinol. Metab.* 93, 1616–1624.
- Hwa, V., Camacho-Hübner, C., Little, B. M., David, A., Metherell, L. A., El-Khatib, N., Savage, M. O., and Rosenfeld, R. G. (2007). Growth hormone insensitivity and severe short stature in siblings: a novel mutation at the exon 13-intron 13 junction of the STAT5b gene. *Horm. Res.* 68, 218–224.
- Hwa, V., Little, B., Adiyaman, P., Kofoed, E. M., Pratt, K. L., Ocal, G., Berberoglu, M., and Rosenfeld, R. G. (2005). Severe growth hormone insensitivity resulting from total absence of signal transducer and activator of transcription 5b. *J. Clin. Endocrinol. Metab.* 90, 4260–4266.
- Hwa, V., Little, B., Kofoed, E. M., and Rosenfeld, R. G. (2004). Transcriptional regulation of insulin-like growth factor-I by interferon-gamma requires STAT-5b. *J. Biol. Chem.* 279, 2728–2736.
- Iida, K., Takahashi, Y., Kaji, H., Nose, O., Okimura, Y., Abe, H., and Chihara, K. (1998). Growth hormone (GH) insensitivity syndrome with high serum GH-binding protein levels caused by a heterozygous splice site mutation of the GH receptor gene producing a lack of intracellular domain. *J. Clin. Endocrinol. Metab.* 83, 531–537.
- Inagaki, K., Tiulpakov, A., Rubtsov, P., Sverdllova, P., Peterkova, V., Yakar, S., Terekhov, S., and LeRoith, D. (2007). A familial insulin-like growth factor-I receptor mutant leads to short stature: clinical and biochemical characterization. *J. Clin. Endocrinol. Metab.* 92, 1542–1548.
- Isaksson, O. G., Jansson, J. O., and Gause, I. A. (1982). Growth hormone stimulates longitudinal bone growth directly. *Science* 216, 1237–1239.
- Isaksson, O. G., Lindahl, A., Nilsson, A., and Isgaard, J. (1987). Mechanism of the stimulatory effect of growth hormone on longitudinal bone growth. *Endocr. Rev.* 8, 426–438.
- Jin, H., Lanning, N. J., and Carter-Su, C. (2008). JAK2, but not Src family kinases, is required for STAT, ERK, and Akt signaling in response to growth hormone in preadipocytes and hepatoma cells. *Mol. Endocrinol.* 22, 1825–1841.
- Jorge, A. A., Souza, S. C., Arbold, I. J., and Mendonca, B. B. (2002). Poor reproducibility of the IGF-I and IGF binding protein-3 generation test in children with short stature and normal coding region of the GH receptor gene. *J. Clin. Endocrinol. Metab.* 87, 466–468.
- Juul, A., Bang, P., Hertel, N. T., Main, K., Dalgaard, P., Jørgensen, K., Müller, J., Hall, K., and Skakkebaek, N. E. (1994). Serum insulin-like growth factor-I in 1030 healthy children, adolescents and adults: relation to age, sex, stage of puberty, testicular size and body mass index. *J. Clin. Endocrinol. Metab.* 78, 744–752.
- Juul, A., Dalgaard, P., Blum, W. F., Bang, P., Hall, K., Michaelsen, K. F., Müller, J., and Skakkebaek, N. E. (1995). Serum levels of insulin-like growth factor (IGF)-binding protein-3 (IGFBP-3) in healthy infants, children and adolescents: the relation to IGF-I, IGF-II, IGFBP-1, IGFBP-2, age, sex, body mass index and pubertal maturation. *J. Clin. Endocrinol. Metab.* 80, 2534–2542.
- Kaplan, S. A., and Cohen, P. (2007). The somatomedin hypothesis 2007: 50 years later. *J. Clin. Endocrinol. Metab.* 92, 4529–4535.
- Kawashima, Y., Kanzaki, S., Yang, F., Kinoshita, T., Hanaki, K., Nagaishi, J., Ohtsuka, Y., Hisatome, I., Ninomoya, H., Nanba, E., Fukushima, T., and Takahashi, S. I. (2005). Mutation at cleavage site of insulin-like growth factor receptor in a short-stature child born with intrauterine growth retardation. *J. Clin. Endocrinol. Metab.* 90, 4679–4687.
- Kofoed, E. M., Hwa, V., Little, B., Woods, K. A., Buckway, C. K., Tsubaki, J., Pratt, K. L., Bezrodnik, L., Jasper, H., Tepper, A., Heinrich, J., and Rosenfeld, R. G. (2003). Growth-hormone insensitivity associated with a STAT5b mutation. *N. Engl. J. Med.* 349, 1139–1147.
- Kowarski, A. A., Schneider, J., Ben-Galim, E., Weldon, V. V., and Daughaday, W. H. (1978). Growth failure with normal serum RIA-GH, and low somatomedin activity: somatomedin restoration, and growth acceleration after exogenous GH. *J. Clin. Endocrinol. Metab.* 47, 461–464.
- Laron, Z. (2004). Laron syndrome (primary growth hormone resistance or insensitivity): the personal experience 1958–2003. *J. Clin. Endocrinol. Metab.* 89, 1031–1044.
- Laron, Z., Klinger, B., Erster, B., and Anin, S. (1988). Effect of acute administration of insulin-like growth factor I in patients with Laron-type dwarfism. *Lancet* 2, 1170–1172.
- Laron, Z., Pertzlan, A., and Mannheimer, S. (1966). Genetic pituitary dwarfism with high serum concentration of growth hormone—a new inborn error of metabolism? *Isr. J. Med. Sci.* 2, 152–155.
- Le Roith, D., Bondy, C., Yakar, S., Liu, J. L., and Butler, A. (2001). The somatomedin hypothesis: 2001. *Endocr. Rev.* 22, 53–74.

- Leong, S. R., Baxter, R. C., Camerato, T., Dai, J., and Wood, W. I. (1992). Structure and functional expression of the acid-labile subunit of the insulin-like growth factor-binding protein complex. *Mol. Endocrinol.* 6, 870–876.
- Lowe, W. L. Jr., Lasky, S. R., LeRoith, D., and Roberts, C. T. Jr. (1988). Distribution and regulation of rat insulin-like growth factor I messenger ribonucleic acids encoding alternative carboxyterminal E-peptides: evidence for alternative processing and regulation in liver. *Mol. Endocrinol.* 2, 528–535.
- Lowe, W. L. Jr., Roberts, C. T. Jr., Lasky, S. R., and LeRoith, D. (1987). Differential expression of alternative 5' untranslated regions in mRNAs encoding rat insulin-like growth factor I. *Proc. Natl. Acad. Sci. U.S.A.* 84, 8946–8950.
- Lupu, F., Terwilliger, J. D., Lee, K., Segre, G. V., and Efstratiadis, A. (2001). Roles of growth hormone and insulin-like growth factor-1 in mouse postnatal growth. *Dev. Biol.* 229, 141–162.
- Maamra, M., Milward, A., Esfahami, H. Z., Abbott, L. P., Metherell, L. A., Savage, M. O., Clark, A. J. L., and Ross, R. J. M. (2006). A 36 residues insertion in the dimerization domain of the growth hormone receptor results in defective trafficking rather than impaired signalling. *J. Endocrinol.* 188, 251–261.
- Metherell, L. A., Akker, S. A., Munroe, P. B., Rose, S. J., Caulfield, M., Savage, M. O., Chew, S. L., and Clark, A. J. L. (2001). Pseudoexon activation as a novel mechanism for disease resulting in atypical growth hormone insensitivity. *Am. J. Hum. Genet.* 69, 641–646.
- Midyett, L. K., Rogol, A. D., Van Meter, Q. L., Frane, J., Bright, G. M., and MS301 Study Group. (2010). Recombinant insulin-like growth factor (IGF)-I treatment in short children with low IGF-I levels: first-year results from a randomized clinical trial. *J. Clin. Endocrinol. Metab.* 95, 611–619.
- Milward, A., Metherell, L., Maamra, M., Barahona, M. J., Wilkinson, I. D. R., Camacho-Hübner, C., Savage, M. O., Bidlingmaier, M., Clark, A. J. L., Ross, R. J. M., and Webb, S. M. (2004). Growth hormone insensitivity syndrome due to a growth hormone receptor truncated after Box 1 resulting in isolated failure of STAT 5 signal transduction. *J. Clin. Endocrinol. Metab.* 89, 1259–1266.
- Netchine, I., Azzi, S., Houang, M., Seurin, D., Perin, L., Ricot, J.-M., Daubas, C., Legay, C., Mester, J., Herich, R., Godeau, F., and Le Bouc, Y. (2009). Partial primary deficiency of insulin-like growth factor (IGF)-I activity associated with IGF-I mutation demonstrates its critical role in growth and brain development. *J. Clin. Endocrinol. Metab.* 94, 3913–3921.
- Netchine, I., Rossignol, S., Dufourg, M. N., Azzi, S., Rousseau, A., Perin, L., Houang, M., Steunou, V., Esteve, B., Thibaud, N., Demay, M. C., Danton, F., Petriczko, E., Bertrand, A. M., Heinrichs, C., Carel, J. C., Loeuille, G. A., Pinto, G., Jacquemont, M. L., Gicquel, C., Cabrol, S., and Le Bouc, Y. (2007). 11p15 imprinting center region 1 loss of methylation is a common and specific cause of typical Russell-Silver syndrome: clinical scoring system and epigenetic-phenotypic correlations. *J. Clin. Endocrinol. Metab.* 92, 3148–3154.
- Nilsson, A., Isgaard, J., Lindahl, A., Dahlstrom, A., Skottner, A., and Isaksson, O. G. (1986). Regulation by growth hormone of number of chondrocytes containing IGF-I in rat growth plate. *Science* 233, 571–574.
- Ohlsson, C., Mohan, S., Sjögren, K., Tivesten, A., Isgaard, J., Isaksson, O., Jansson, J. O., and Svensson, J. (2009). The role of liver-derived insulin-like growth factor-I. *Endocr. Rev.* 30, 494–535.
- Ooi, G. T., Cohen, F. J., Tseng, L. Y., Rechler, M. M., and Boisclair, Y. R. (1997). Growth hormone stimulates transcription of the gene encoding the acid-labile subunit (ALS) of the circulating insulin-like growth factor-binding protein complex and ALS promoter activity in rat liver. *Mol. Endocrinol.* 11, 997–1007.
- Phillips, J. A., Hjelle, B. L., Seeburg, P. H., and Zachmann, M. (1981). Molecular basis for familial isolated growth hormone deficiency. *Proc. Natl. Acad. Sci. U.S.A.* 78, 6372–6375.
- Proctor, A. M., Phillips, J. A. III, and Cooper, D. N. (1998). The molecular genetics of growth hormone deficiency. *Hum. Genet.* 103, 255–272.
- Pugliese-Pires, P. N., Tonelli, C. A., Dora, J. M., Silva, P. C. A., Czepielewski, M., Simoni, G., Arnhold, I. J., and Jorge, A. A. (2010). A novel STAT5B mutation causing GH insensitivity syndrome associated with hyperprolactinemia and immune dysfunction in two male siblings. *Eur. J. Endocrinol.* 163, 349–355.
- Riedl, S., and Frisch, H. (2006). Effects of growth hormone (GH) and insulin-like growth factor-I therapy in patients with gene defects in the GH axis. *J. Paediatr. Endocrinol. Metab.* 19, 229–236.
- Roberts, C. T. Jr., Lasky, S. R., Lowe, W. L. Jr., Seaman, W. T., and LeRoith, D. (1987). Molecular cloning of rat insulin-like growth factor I complementary deoxyribonucleic acids: differential messenger ribonucleic acid processing and regulation by growth hormone in extrahepatic tissues. *Mol. Endocrinol.* 1, 243–248.
- Rosenfeld, R. G. (2005). "The IGF system: new developments relevant to pediatric practice," in *IGF-I and IGF Binding Proteins: Basic Research and Clinical Management*, Vol. 9, eds S. Cianfarani, D. R. Clemmons, and M. O. Savage (Basel: Karger), 1–10.
- Rosenfeld, R. G., Belgorosky, A., Camacho-Hübner, C., Savage, M. O., Wit, J. M., and Hwa, V. (2007). Defects in growth hormone receptor signaling. *Trends Endocrinol. Metab.* 18, 134–141.
- Rosenfeld, R. G., Kemp, S. F., and Hintz, R. L. (1981). Constancy of somatomedin response to growth hormone treatment of hypopituitary dwarfism, and lack of correlation with growth rate. *J. Clin. Endocrinol. Metab.* 53, 611–617.
- Rosenfeld, R. G., Rosenbloom, A. L., and Guevarra-Aguirre, J. (1994). Growth hormone (GH) insensitivity due to primary GH receptor deficiency. *Endocr. Rev.* 15, 369–390.
- Rowlinson, S. W., Yoshizato, H., Barclay, J. L., Brooks, A. J., Behncken, S. N., Kerr, L. M., Millard, K., Palethorpe, K., Nielsen, K., Clyde-Smith, J., Hancock, J. F., and Waters, M. J. (2008). An agonist-induced conformational change in the growth hormone receptor determines the choice of signalling pathway. *Nat. Cell Biol.* 10, 740–747.
- Salmon, W. D. Jr., and Daughaday, W. H. (1957). A hormonally controlled serum factor which stimulates sulphate incorporation by cartilage in vitro. *J. Lab. Clin. Med.* 49, 825–836.
- Savage, M. O., Attie, K. M., David, A., Metherell, L. A., Clark, A. J., and Camacho-Hübner, C. (2006). Endocrine assessment, molecular characterization and treatment of growth hormone insensitivity disorders. *Nat. Clin. Pract. Endocrinol. Metab.* 2, 395–407.
- Savage, M. O., Burren, C. P., and Rosenfeld, R. G. (2010). The continuum of growth hormone-IGF-I axis defects causing short stature: diagnostic and therapeutic challenges. *Clin. Endocrinol.* 72, 721–728.
- Selva, K. A., Buckway, C. K., Sexton, G., Pratt, K. L., Tjoeng, E., Guevarra-Aguirre, J., and Rosenfeld, R. G. (2003). Reproducibility in patterns of IGF generation tests with special reference to idiopathic short stature. *Horm. Res.* 60, 237–246.
- Sjögren, K., Liu, J. L., Blad, K., Skrtic, S., Vidal, O., Wallenius, V., LeRoith, D., Tornell, J., Isaksson, O. G., Jansson, J. O., and Ohlsson, C. (1999). Liver-derived insulin-like growth factor I (IGF-I) is the principal source of IGF-I in blood but is not required for postnatal body growth in mice. *Proc. Natl. Acad. Sci. U.S.A.* 96, 7088–7092.
- Takahashi, Y., Kaji, H., Okimura, Y., Goji, K., Abe, H., and Chihara, K. (1996). Short stature caused by a mutant growth hormone. *N. Eng. J. Med.* 334, 432–436.
- Takahashi, Y., Shirono, H., Arisaka, O., Takahashi, K., Yagi, T., Koga, J., Kaji, H., Okimura, Y., Abe, H., Tanaka, T., and Chihara, K. (1997). Biologically inactive growth hormone caused by an amino acid substitution. *J. Clin. Invest.* 100, 1159–1165.
- Ueki, I., Ooi, G. T., Tremblay, M. L., Hurst, K. R., Bach, L. A., and Boisclair, Y. R. (2000). Inactivation of the acid labile subunit gene in mice results in mild retardation of postnatal growth despite profound disruptions in the circulating insulin-like growth factor system. *Proc. Natl. Acad. Sci. U.S.A.* 97, 6868–6873.
- van Duyvenvoorde, H. A., van Setten, P. A., Walenkamp, M. J., van Doorn, J., Koenig, J., Gauguin, L., Oostdijk, W., Ruivenkamp, C. A., Losekoot, M., Wade, J. D., De Meyts, P., Karperien, M., Noordam, C., and Wit, J. M. (2010). Short stature associated with a novel heterozygous mutation in the insulin-like growth factor 1 gene. *J. Clin. Endocrinol. Metab.* 95, E363–E367.
- Vidarsdottir, S., Walenkamp, M. J. E., Pereira, A. M., Karperien, M., van Doorn, J., van Duyvenvoorde, H. A., White, S., Breuning, M. H., Roelfsema, F., Kruihof, M. F., van Dissel, J., Janssen, R., Wit, J. M., and Romijn, J. A. (2006). Clinical and biochemical characteristics of a male patient with a novel homozygous STAT5b mutation. *J. Clin. Endocrinol. Metab.* 91, 3482–3485.
- Walenkamp, M. J., van der Kamp, H. J., Pereira, A. M., Kant, S. G., van Duyvenvoorde, H. A., Kruihof, M. F., Breuning, M. H., Romijn, J. A., Karperien, M., and Wit, J. M. (2006). A variable degree of intrauterine and postnatal growth retardation in a family with a missense mutation in the insulin-like growth factor I receptor. *J. Clin. Endocrinol. Metab.* 91, 3062–3470.

- Walenkamp, M. J. E., Karperien, M., Pereira, A. M., Hilhorst-Hofstee, Y., van Doorn, J., Chen, J. W., Mohan, S., Denley, A., Forbes, B. E., van Duyvenvoorde, H., van Thiel, S. W., Sluimers, C. A., Bax, J. J., de Laat, J. A. P. M., Breuning, M. B., Romijn, J. A., and Wit, J. M. (2005). Homozygous and heterozygous expression of a novel insulin-like growth factor-I mutation. *J. Clin. Endocrinol. Metab.* 90, 2855–2864.
- Walker, J. L., Ginalska-Malinowska, M., Romer, T. E., Pucilowska, J. B., and Underwood, L. E. (1991). Effects of the infusion of insulin-like growth factor I in a child with growth hormone insensitivity syndrome (Laron dwarfism). *N. Engl. J. Med.* 324, 1483–1488.
- Wang, Y., and Jiang, H. (2005). Identification of a distal STAT-binding DNA region that may mediate growth hormone regulation of insulin-like growth factor-I gene expression. *J. Biol. Chem.* 280, 10955–10963.
- Woods, K. A., Camacho-Hübner, C., Bergman, R. N., Barter, D., Clark, A. J. L., and Savage, M. O. (2000). Effects of insulin-like growth factor I (IGF-I) therapy on body composition and insulin resistance in IGF-I gene deletion. *J. Clin. Endocrinol. Metab.* 85, 1407–1411.
- Woods, K. A., Dastot, F., Preece, M. A., Clark, A. J. L., Postel-Vinay, M. C., Chatelain, P. G., Ranke, M. B., Rosenfeld, R. G., Amselem, S., and Savage, M. O. (1997). Phenotype: genotype relationships in growth hormone insensitivity syndrome. *J. Clin. Endocrinol. Metab.* 82, 3529–3535.
- Woods, K. A., Fraser, N. C., Postel-Vinay, M.-C., Duquesnoy, P., Savage, M. O., and Clark, A. J. L. (1996a). A homozygous splice site mutation affecting the intracellular domain of the growth hormone receptor resulting in Laron syndrome with elevated growth hormone binding protein. *J. Clin. Endocrinol. Metab.* 81, 1686–1690.
- Woods, K. A., Camacho-Hübner, C., Savage, M. O., and Clark, A. J. L. (1996b). Intrauterine growth retardation and post-natal growth failure associated with deletion of the insulin-like growth factor-I gene. *N. Engl. J. Med.* 335, 1363–1367.
- Wu, Y., Sun, H., Yakar, S., and LeRoith, D. (2009). Elevated levels of insulin-like growth factor (IGF)-I in serum rescue the severe growth retardation of IGF-I null mice. *Endocrinology* 150, 4395–4403.
- Yakar, S., Liu, J. L., Stannard, B., Butler, A., Accili, D., Sauer, B., and LeRoith, D. (1999). Normal growth and development in the absence of hepatic insulin-like growth factor I. *Proc. Natl. Acad. Sci. U.S.A.* 96, 7324–7329.
- Conflict of Interest Statement:** Martin O. Savage – Ipsen consultancy fees > \$10k, Advisory Council < \$10k, honoraria < \$10k, Pfizer Inc honoraria < \$10k. Vivian Hwa – Nothing to disclose. Alessia David – Nothing to disclose. Ron G. Rosenfeld – Ipsen consulting fees, Advisory Council > \$10k, honoraria < \$10k, Lilly consulting fees, Advisory Council < \$10k. Louise A. Metherell – Nothing to disclose.

Received: 10 November 2011; accepted: 21 November 2011; published online: 12 December 2011.

Citation: Savage MO, Hwa V, David A, Rosenfeld RG and Metherell LA (2011) Genetic defects in the growth hormone-IGF-I axis causing growth hormone insensitivity and impaired linear growth. *Front. Endocrin.* 2:95. doi: 10.3389/fendo.2011.00095

This article was submitted to *Frontiers in Pediatric Endocrinology*, a specialty of *Frontiers in Endocrinology*.

Copyright © 2011 Savage, Hwa, David, Rosenfeld and Metherell. This is an open-access article distributed under the terms of the Creative Commons Attribution Non Commercial License, which permits non-commercial use, distribution, and reproduction in other forums, provided the original authors and source are credited.