

## Research Article

# The Diagnostic Value of Whole Blood lncRNA NR\_120420 for Acute Ischemic Stroke

Chunou Tian,<sup>1,2</sup> Zifu Li,<sup>1</sup> Sisi Li,<sup>1</sup> Lei Zhang,<sup>1</sup> Dongwei Dai,<sup>1</sup> Qinghai Huang,<sup>1</sup> Yu Zhou <sup>1</sup>,  
and Bo Hong <sup>1</sup>

<sup>1</sup>Neurovascular Center, Changhai Hospital, Naval Medical University, 168 Changhai Road, Shanghai 200433, China

<sup>2</sup>Department of Neurosurgery, The First Naval Hospital of Southern Theater Command of PLA, 40 Third Haibin Road, Zhanjiang, 524005 Guangdong, China

Correspondence should be addressed to Yu Zhou; 18317172650@126.com and Bo Hong; 1623831357@qq.com

Received 7 December 2021; Accepted 19 January 2022; Published 23 February 2022

Academic Editor: Hailiang Tang

Copyright © 2022 Chunou Tian et al. This is an open access article distributed under the Creative Commons Attribution License, which permits unrestricted use, distribution, and reproduction in any medium, provided the original work is properly cited.

**Objective.** Current clinical practice based on CT or multimodal images to diagnose ischemic stroke always led to substantial treatment delay. We perform this study to explore possible circulating lncRNA biomarker to help promptly diagnose the disease. **Methods.** We used microarray to identify the differentially expressed lncRNAs in the peripheral whole blood between AIS patients and controls and verified the results by quantitative polymerase chain reaction (qPCR). Multivariate logistic regressions were performed to determinate the lncRNAs independently associated with AIS occurrence. The ROC curve was used to detect the diagnostic accuracy of candidate lncRNAs in AIS and AIS subtypes, which was classified according to the Oxford Community Stroke Project (OCSP) criteria. **Results.** The microarray analysis screened out 5686 differentially expressed lncRNAs. Among the nine selected lncRNAs verified by qPCR, NR\_120420 (OR 1.29, 95% CI 1.02-1.65,  $P = 0.037$ ) was found independently associated with AIS after balancing patient baseline characteristics. The receiver operating characteristic (ROC) analysis concerning NR\_120420 in total anterior circulation infarction subgroup showed that the area under the curve was 0.86 (95% CI: 0.73-0.99,  $P = 0.003$ ), and at the optimal cutoff point of 1.93, the sensitivity and specificity reached 85.7% and 84.6%, respectively. **Conclusion.** Our study indicated that NR\_120420 could predict the total anterior circulation infarction with high sensitivity and specificity and could be potentially used as a biomarker for total anterior circulation infarction in AIS patients.

## 1. Introduction

Nowadays, thrombolysis and thrombectomy become standard treatment of acute ischemic strokes (AIS) [1–5]. However, patients' outcomes are closely related to onset to reperfusion time. Current clinical practice based on CT or multimodal images to diagnose the diseases always led to substantial treatment delay, i.e., patients with suspicious stroke have to be sent to hospital and perform CT before initiating such reperfusion treatment. Attempts for faster and more convenient diagnosis are needed to shorten the treatment delay and improve patient outcome.

It is speculated that, in AIS, many molecules and proteins released from injured or dead brain cells may escape from the brain via the disrupted blood-brain barrier and enter the blood flow, which may provide a new approach

for the prompt diagnosis of AIS [6–9]. In recent years, the long noncoding RNAs (lncRNAs) have been used in the diagnosis of many diseases [10–13]. lncRNAs are a subtype of noncoding RNAs (ncRNAs) that make up the largest portion of the transcriptome [14] and are involved in many cellular processes after stroke including hypoxia, excitotoxicity, inflammation, oxidative stress, and apoptosis [15]. In such circumstance, some circulating lncRNAs may play important roles in early diagnosis of the AIS [16]. However, such studies are still limited.

In this study, we identified differentially expressed lncRNAs in the peripheral whole blood from AIS patients using microarray and verified them by quantitative polymerase chain reaction (qPCR); we aimed to explore the relationship between circulating lncRNA expression and the classification of AIS.

## 2. Materials and Methods

**2.1. Patients.** The patients with AIS admitted to the Neurovascular Center of Shanghai Changhai Hospital between January 2016 and November 2016 were enrolled in the study. The written informed consent was obtained from these patients. They were selected following the inclusion and exclusion criteria. Inclusion criteria were as follows: time duration from the onset of stroke to confirmation was less than 6 hours. Exclusion criteria were as follows: immune disease, trauma, organ failure, tumor, and infection. The control (CTRL) population was made up of healthy volunteers. The study was approved by the Medical Ethics Committee of Shanghai Changhai Hospital, and all the experiment procedures were carried out according to the 1964 Helsinki declaration and its later amendments or comparable ethical standards.

**2.2. Blood Collection and RNA Extraction.** The peripheral whole blood of AIS patients and CTRLs was collected and added into PAXgene Blood RNA Tubes (BD, New York, America). Subsequently, the blood collection tube would be rapidly transferred to a refrigerator whose temperature was set at  $-80^{\circ}\text{C}$ . Therefore, the total RNA was extracted with a PAXgene Blood miRNA Kit (Qiagen, Nordrhein-Westfalen, Germany) from the peripheral whole blood according to the manufacturer's instructions. The clinical data of AIS patients and CTRLs was obtained through clinical or out-patient follow-up.

**2.3. lncRNA Microarray Hybridization.** The Agilent Human lncRNA microarray (4\*180K V5, Design ID: 076500) was used in this experiment. Total RNA was transcribed into double-strand cDNA and then synthesized into cRNA and labeled with Cyanine-3-CTP. After washing, the arrays were scanned by the Agilent Scanner G2505C (Agilent Technologies, CA, USA). Lastly, Feature Extraction software (version 10.7.1.1, Agilent Technologies, CA, USA) was used to analyze array images to get raw data and GeneSpring (version 13.1, Agilent Technologies, CA, USA) was employed to finish the basic analysis with the raw data. To begin with, the raw data was normalized with the quantile algorithm. Differentially expressed genes or lncRNAs with an arbitrary fold change (FC) ( $\geq 2$ ) and a  $P$  value ( $< 0.05$ ) were selected.

**2.4. Quantitative PCR.** A two-step reaction process was used for qPCR (reverse transcription (RT) PCR and real-time PCR). PrimeScript™ RT reagent Kit with gDNA Eraser (Takara-Bio, Shiga, Japan) was used in the first step because it can eliminate genomic DNA. QuantiNova SYBR Green PCR Kit (Qiagen, Nordrhein-Westfalen, Germany) was used in the second step. At the end of the PCR cycles, the sequencing work was performed by a 3730XL sequencer (Applied Biosystems, California, CA, USA) to validate the specific generation of the expected PCR product. The cycle threshold (Ct) was defined as the cycle number when the fluorescence has just exceeded the given threshold. The operators who detected the lncRNAs in blood were blinded to clinical data of the samples. Relative expression levels of

TABLE 1: Clinical features of the AIS group and the CTRL group.

Features	AIS ( $n = 39$ )	CTRL ( $n = 39$ )	$P$
Age (years)	74 (15)	$76.62 \pm 10.34$	0.134
Male/female ( $n/n$ )	15/24	21/18	0.173
Current smoking, $n$ (%)	6 (15.4)	11 (28.2)	0.17
DM, $n$ (%)	7 (17.9)	10 (25.6)	0.411
Hypertension, $n$ (%)	23 (59.0)	17 (43.6)	0.174
Hyperlipidemia, $n$ (%)	12 (30.8)	16 (41)	0.345
CHD, $n$ (%)	7 (17.9)	4 (10.3)	0.329
Alcohol intake, $n$ (%)	5 (12.8)	7 (17.9)	0.530
SBP (mmHg)	$140.21 \pm 19.86$	130 (15)	0.480
DBP (mmHg)	$82.82 \pm 13.37$	80 (13)	0.296
Heart rate ( $\text{min}^{-1}$ )	80 (16)	76 (8)	0.149
Blood glucose (mmol/l)	7.1 (3.6)	6.9 (4)	0.889
TC (mmol/l)	$4.32 \pm 0.88$	$4.55 \pm 0.96$	0.273
TG (mmol/l)	1.45 (1.25)	1.27 (0.88)	0.232
LDL (mmol/l)	$2.57 \pm 0.70$	$2.57 \pm 0.73$	0.974
HDL (mmol/l)	1.15 (0.41)	1.2 (0.47)	0.678

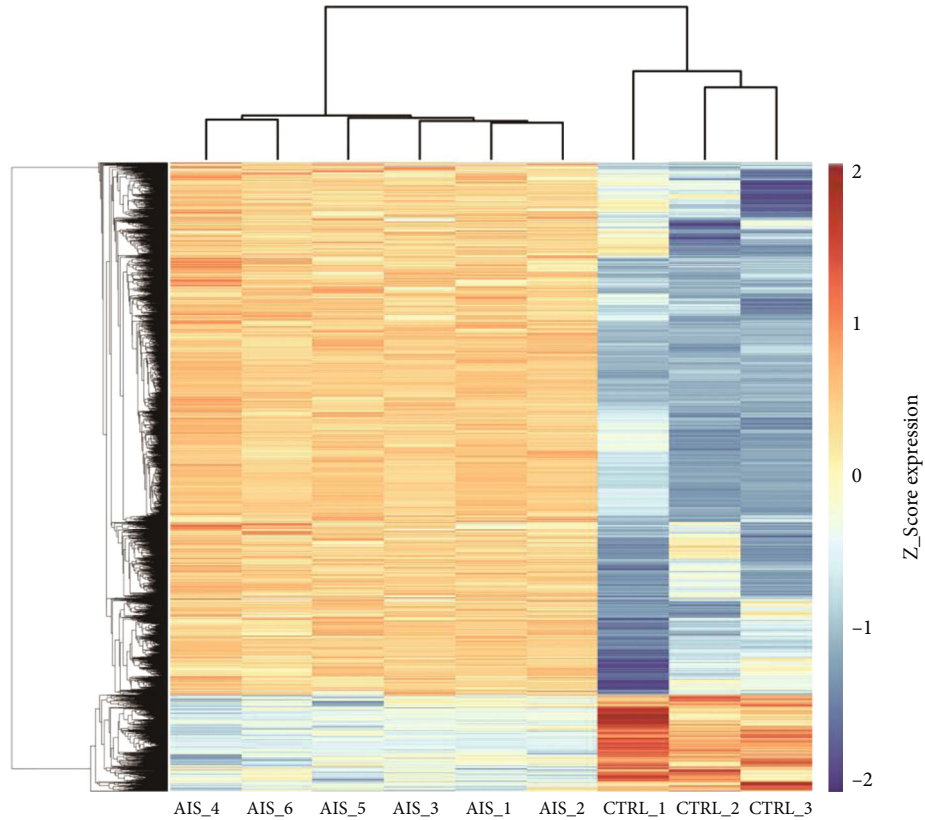
DM: diabetes mellitus; CHD: coronary heart disease; SBP: systolic blood pressure; DBP: diastolic blood pressure; TC: total cholesterol; TG: triglyceride; LDL: low-density lipoprotein; HDL: high-density lipoprotein.

lncRNAs were normalized to  $\beta$ -actin and were calculated by the  $2^{-\Delta\Delta\text{CT}}$  method in triplicate.

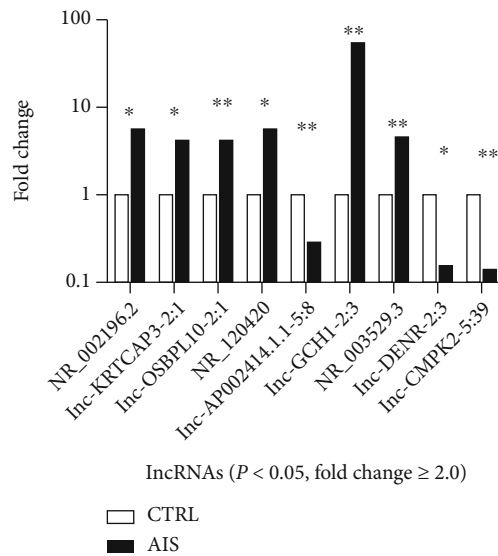
**2.5. Correlation Analysis between lncRNAs and Stroke.** Multivariate logistic regressions were performed to evaluate the relationship among candidate lncRNA expression, clinical features, and AIS status. We used ROC curves to clarify the diagnostic accuracy of candidate lncRNAs for AIS.

**2.6. Correlation between Specific lncRNAs and Stroke Classification.** AIS patients were classified according to the OCSF criteria by two independent examiners, namely, total anterior circulation infarct (TACI), partial anterior circulation infarct (PACI), posterior circulation infarct (POCI), or lacunar infarct (LACI), based on their maximum neurological defects [17]. The expression levels of specific lncRNA between AIS patients in different classifications and CTRLs were analyzed statistically.

**2.7. Statistical Analysis.** A  $\chi^2$  test was used to compare the qualitative data. One-way analysis of variance (ANOVA) was applied when the quantitative data could follow the normal distribution (the Shapiro-Wilk test,  $\alpha = 0.1$ ) and the homogeneity of variance (the Levene test). The Mann-Whitney test or the Kruskal-Wallis test was performed when the quantitative data did not fit the normal distribution or the homogeneity of variance. All statistical calculations were performed with the SPSS software 21.0. The final data was expressed as mean  $\pm$  standard deviation (SD), and a value of  $P < 0.05$  was considered as significant.



(a)



(b)

FIGURE 1: Heat map and hierarchical clustering for lncRNA profile comparison between the AIS patients and CTRLs and the microarray different expression profiles of nine lncRNAs which were selected for qPCR validation. (a) Each row represented one lncRNA, and each column represented one sample. The relative lncRNA expression was depicted according to the color scale. Red indicated upregulation; green indicated downregulation. 2, 1, 0, -1, and -2 were fold changes in the corresponding spectrum, whereas AIS represented acute ischemic stroke and CTRL represented controls. The differentially expressed lncRNAs were clearly classified into AIS and CTRL clusters. (b) The raw data of microarray was normalized with the quantile algorithm. Fold change as well as  $P$  value was calculated with normalized data. The heights of the columns in the figure represented the fold change. \* $P < 0.05$  and \*\* $P < 0.01$ .

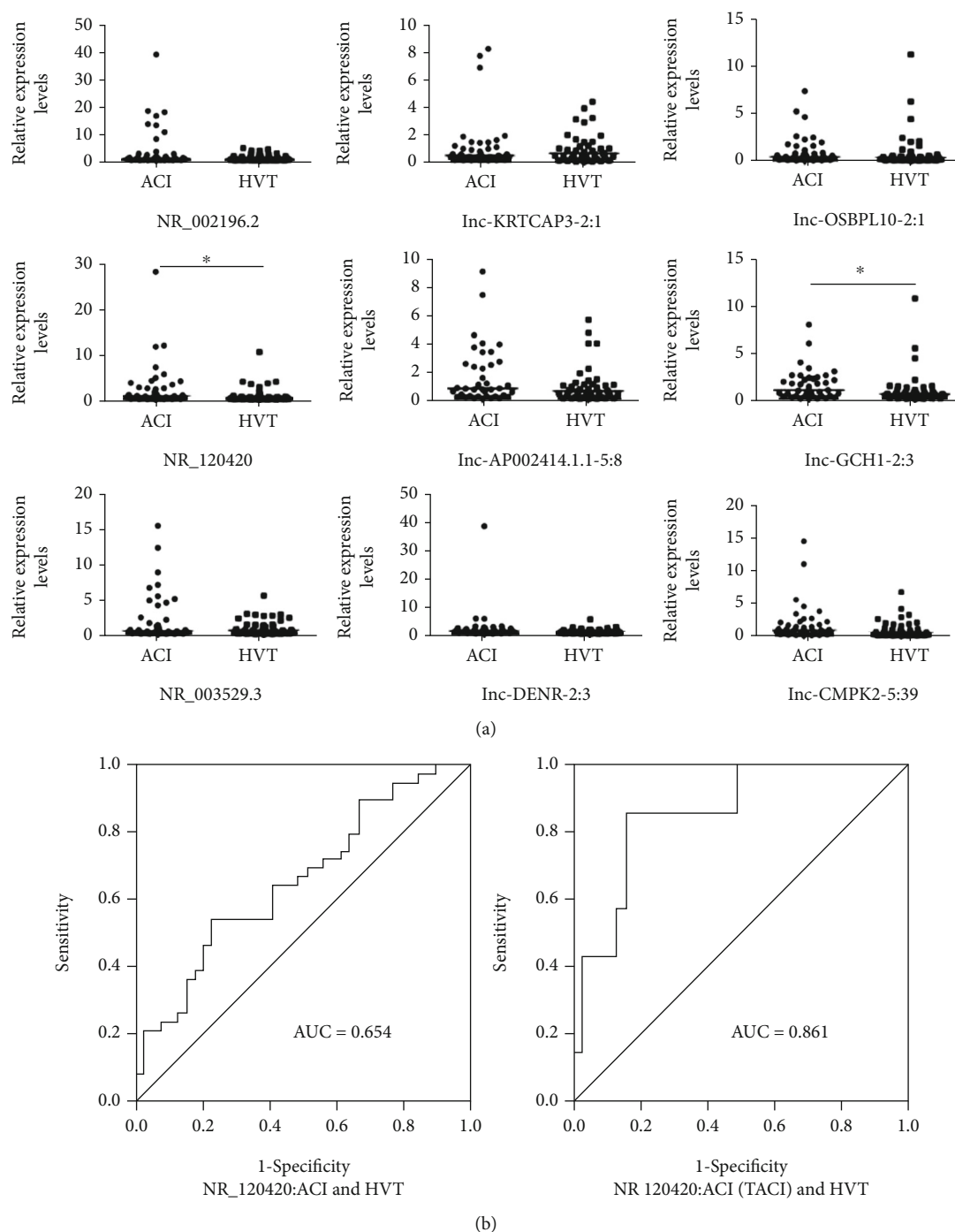


FIGURE 2: Relative expression levels of lncRNAs comparing the AIS and CTRL groups, measured by qPCR and ROC curve analysis for the lncRNA biomarkers. (a) The relative expression levels of nine lncRNAs in the AIS patients and CTRLs were verified by qPCR. The straight line in each figure represented the median. The original Ct value was treated with the  $2^{-\Delta\Delta CT}$  method. \* $P < 0.05$ . (b) ROC curves compared the lncRNA biomarker expression levels of NR\_120420 in blood between different AIS group and CTRL group. The diagonal in the figure was for reference.

### 3. Results

**3.1. Patient Characteristics and AIS Classification.** Overall, 45 AIS patients and 42 controls were enrolled in this study. Table 1 shows the clinical baseline characteristics of enrolled patients in the AIS and CTRL groups, respectively. Baseline

characteristics such as age, gender, risk factors of ischemic stroke, vital signs, blood glucose, and lipid are balanced between the two groups.

Six AIS patients and three controls were selected randomly (simple random sampling, random number table) for microarray detection. 39 AIS patients and 39 controls

TABLE 2: Multivariate logistic regression.

Item	B	S.E.	Wald	df	P	OR	95% CI of OR	
							Lower limit	Upper limit
NR_120420	0.25	0.12	4.36	1	0.037	1.29	1.02	1.65
Age	-0.068	0.028	5.77	1	0.016	0.93	0.88	0.99
Hyperlipidemia	-0.99	0.55	3.18	1	0.075	0.37	0.13	1.10
Constant	5.02	2.17	5.35	1	0.021	151.3		

were selected for subsequent quantitative polymerase chain reaction (qPCR) analysis. According to the Oxford Community Stroke Project (OCSP) criteria mentioned above, the 6 AIS patients in the microarray group were classified as total anterior circulation infarction (TACI) in 1, partial anterior circulation infarction (PACI) in 4, and posterior circulation infarction (POCI) in 1. And the 39 AIS patients in the qPCR group were classified as 7 TACI, 27 PACI, and 5 POCI. The lncRNA expression of the AIS patients in different OCSP classification and CTRLs was compared.

**3.2. Microarray Analysis Results.** The expression levels of lncRNAs and mRNAs in blood were detected by microarray technology. As a result, 5686 lncRNAs and 1990 mRNAs with a fold change  $\geq 2.0$  in the expression profile were identified as the differentially expressed genes. A clustering heat map (Figure 1(a)) exhibited distinguishable expressed lncRNAs between AIS patients and CTRLs.

**3.3. Validation of Differential lncRNA Expression by qPCR.** Nine of the 5686 differently expressed lncRNAs identified by the microarray were selected to conduct qPCR validation. Six lncRNAs were upregulated (NR\_002196.2, lnc-KRTCAP3-2:1, lnc-OSBPL10-2:1, NR\_120420, lnc-GCH1-2:3, and NR\_003529.3) and three lncRNAs were downregulated (lnc-AP002414.1.1-5:8, lnc-DENR-2:3, and lnc-CMPK2-5:39) in the microarray expression profile (Figure 1(b)). In the qPCR validation, the median of these nine lncRNAs in the AIS group was all higher than that in the CTRL group. Among the nine lncRNAs, NR\_120420 and lnc-GCH1-2:3 showed a significant difference between the AIS and CTRL groups, while the differences were not statistically significant for the other lncRNAs (Figure 2(a)).

However, in the multivariate logistic regression analysis including patient clinical features and expression levels of NR\_120420 and lnc-GCH1-2:3, only NR\_120420 (OR 1.29, 95% CI 1.02-1.65,  $P = 0.037$ ,  $x_1$ ), age ( $x_2$ ), and hyperlipidemia ( $x_3$ ) were found independently associated with the diagnosis of AIS. The regression model was established as follows:  $Y = 5.019 + 0.257x_1 - 0.068x_2 - 0.986x_3$  (Table 2).

**3.4. NR\_120420 Had High Specificity and Sensitivity in TACI Patients.** A receiver operating characteristic (ROC) curve was drawn to detect the diagnostic accuracy of lncRNAs as biomarkers for AIS (Figure 2(b), left). The area under the curve (AUC) of NR\_120420 was 0.65 (95% CI: 0.53-0.78,  $P = 0.019$ ). At the optimal cutoff point (0.63), the sensitivity and specificity were 53.8% and 76.9%, respectively.

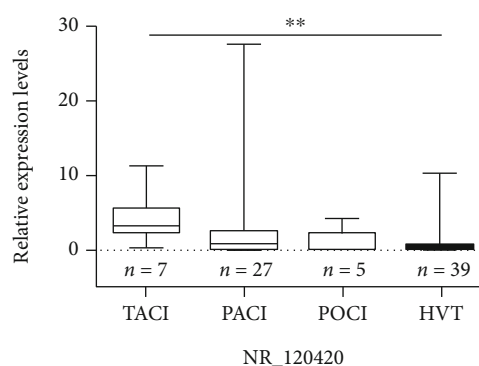


FIGURE 3: Comparison of NR\_120420 expression in AIS patients with different OCSP classification to the CTRL group. The relative expression levels of NR\_120420 in different classification were shown with minimums, the 25<sup>th</sup> percentiles, medians, the 75<sup>th</sup> percentiles, and maximums. The significance level ( $\alpha$ ) was adjusted to 0.016 (0.05/3) for multiple pairwise comparisons according to the Mann-Whitney test after overall comparisons of multiple groups according to the Kruskal-Wallis test, \* $P < 0.05$  and \*\* $P < 0.01$ .

We further examined the expression levels of NR\_120420 in different AIS subtypes (Figure 3). Compared to CTRLs, its expression was increased in TACI and PACI subtypes and decreased in the POCI subtype. The differences were significant only in the TACI subtype compared to CTRLs. A ROC curve (Figure 2(b), right) concerning NR\_120420 in TACI patients showed the AUC reached 0.86 (95% CI: 0.73-0.99,  $P = 0.003$ ). At the optimal cutoff point of 1.93, the sensitivity and specificity were 85.7% and 84.6%, respectively.

## 4. Discussion

In this study, we identified one specific circulating lncRNA (NR\_120420) that exhibited significantly higher in the AIS patients, and the validation via qPCR showed NR\_120420 has a high sensitivity and specificity in the diagnosis of total anterior circulation infarction.

By using microarray and qPCR, we successfully identified two circulating lncRNAs (NR\_120420 and lnc-GCH1-2:3) significantly increased in AIS patients in the beginning. However, lnc-GCH1-2:3 was not found independently associated with the occurrence of AIS after balancing with patient baseline characteristics, which indicated lnc-GCH1-2:3 may be more likely associated with such baseline characteristics.

We found that NR\_120420 showed a potential value in predicting the “TACI” AIS subtype; the sensitivity and the specificity reached 85.7% and 84.6%, respectively. Cerebral infarction volume of the patients with TACI is larger than that of the patients with PACI and POCI. More lncRNAs were released from injured brain cells and entered the blood flow via the disrupted blood-brain barrier in these patients. As a result, lncRNA in the peripheral whole blood of them would be significantly different from the CTRL group. The research of our group showed that NR\_120420 knockdown inhibited apoptosis after cerebral infarction by downregulating the phosphorylation of a subunit of NF- $\kappa$ B (P65) [18].

Recently, Wang et al. have also studied the role of another circulating lncRNA H19 in predicting AIS; they examined an AIS patient whose onset-to-admission time was less than 3 hours and reported that lncRNA H19 in plasma, lymphocytes, and neutrophils had a sensitivity and specificity of 0.806 and 0.920, 0.556 and 0.920, and 0.75 and 0.72 in predicting AIS, respectively [19]. Our result is comparable to theirs; however, we used the peripheral whole blood samples rather than different blood component, which may be faster in clinic. In addition, the included patients were different; our study included patients whose onset time was less than 6 hours while the aforementioned study included patients whose onset time was less than 3 hours. A recent study showed that the expression profile of whole blood lncRNAs after ischemic stroke changed significantly with time [16].

A limitation of our study was the small sample size for microarray analysis. In addition, this lncRNA microarray technology lacks the ability to unravel novel features of splice isoforms or fusion transcripts compared to RNA-seq technology. Besides, we will carry out investigation about the peripheral whole blood expression of this lncRNA in hemorrhagic patients in the future in order to clarify the exclusive role of this lncRNA for cerebral infarction and make our conclusion be more reliable and specific.

## 5. Conclusion

Our study indicated that NR\_120420 could predict the total anterior circulation infarction with high sensitivity and specificity and hence could be potentially used as a biomarker for total anterior circulation infarction in AIS patients.

## Abbreviations

AIS:	Acute ischemic stroke
qPCR:	Quantitative polymerase chain reaction
OCSP:	Oxford Community Stroke Project
CTRL:	Control
ROC:	Receiver operating characteristic
TACI:	Total anterior circulation infarction
lncRNAs:	Long noncoding RNAs
ncRNAs:	Noncoding RNAs
PAC:	Partial anterior circulation infarction
POCI:	Posterior circulation infarction
AUC:	Area under the curve
Ct:	Cycle threshold
ANOVA:	Analysis of variance

SD:	Standard deviation
DM:	Diabetes mellitus
CHD:	Coronary heart disease
SBP:	Systolic blood pressure
DBP:	Diastolic blood pressure
TC:	Total cholesterol
TG:	Triglyceride
LDL:	Low-density lipoprotein
HDL:	High-density lipoprotein.

## Data Availability

The data of the microarray analysis are available from the Gene Expression Omnibus database (accession number: GSE102541) (<https://www.ncbi.nlm.nih.gov/geo/query/acc.cgi?acc=GSE102541>).

## Ethical Approval

The study was approved by the Medical Ethics Committee of Shanghai Changhai Hospital, and all the experiment procedures were carried out according to the 1964 Helsinki declaration and its later amendments or comparable ethical standards. This article does not contain any studies with animals performed by any of the authors.

## Consent

Written informed consent was obtained after all candidates were informed of possible research risks.

## Disclosure

The funders had no role in the study design; the collection, analysis, and interpretation of data; the writing of the report; and the decision to submit the article for publication. This article has not used any copyrighted material from other sources (including the Internet).

## Conflicts of Interest

All authors have read the journal’s policy on disclosure of potential conflicts of interest and signed. The authors declare that they have no known competing financial interests or personal relationships that could have appeared to influence the work reported in this paper. All authors have read the journal’s authorship agreement.

## Authors’ Contributions

Chunou Tian was responsible for writing—original draft; Zifu Li was responsible for writing—review and editing; Sisi Li was responsible for validation; Lei Zhang was responsible for data curation; Dongwei Dai was responsible for software; Qinghai Huang was responsible for the methodology; Yu Zhou was responsible for project administration; Bo Hong was responsible for supervision. Chunou Tian, Zifu Li, and Sisi Li contributed equally to this work.

## Acknowledgments

We would like to thank Professor Qing Jing and his lab members from the Department of Cardiology, Changhai Hospital, for their support and assistance. This work was supported by the National Natural Science Foundation of China (31370810) and the Science and Technology Commission of Shanghai Municipality (18ZR1438500 and 201409003900).

## References

- [1] O. A. Berkhemer, P. S. Fransen, D. Beumer et al., “A randomized trial of intraarterial treatment for acute ischemic stroke,” *The New England Journal of Medicine*, vol. 372, no. 1, pp. 11–20, 2015.
- [2] B. C. Campbell, P. J. Mitchell, T. J. Kleinig et al., “Endovascular therapy for ischemic stroke with perfusion-imaging selection,” *The New England Journal of Medicine*, vol. 372, no. 11, pp. 1009–1018, 2015.
- [3] L. Q. Liu, X. R. Liu, J. Y. Zhao et al., “Brain-selective mild hypothermia promotes long-term white matter integrity after ischemic stroke in mice,” *CNS Neuroscience & Therapeutics*, vol. 24, no. 12, pp. 1275–1285, 2018.
- [4] D. Liang, X. B. He, Z. Wang et al., “Remote limb ischemic post-conditioning promotes motor function recovery in a rat model of ischemic stroke via the up-regulation of endogenous tissue kallikrein,” *CNS Neuroscience & Therapeutics*, vol. 24, no. 6, pp. 519–527, 2018.
- [5] J. L. Saver, M. Goyal, A. Bonafe et al., “Stent-retriever thrombectomy after intravenous t-PA vs. t-PA alone in stroke,” *The New England Journal of Medicine*, vol. 372, no. 24, pp. 2285–2295, 2015.
- [6] D. M. Bennion, C. A. Rosado, E. A. Haltigan, R. W. Regenthal, C. Summers, and M. F. Waters, “Serum activity of angiotensin converting enzyme 2 is decreased in patients with acute ischemic stroke,” *Journal of the Renin-Angiotensin-Aldosterone System*, vol. 17, no. 3, p. 147032031666106, 2016.
- [7] T. Lian, D. Qu, X. Zhao, L. Yu, and B. Gao, “Identification of site-specific stroke biomarker candidates by laser capture microdissection and labeled reference peptide,” *International Journal of Molecular Sciences*, vol. 16, no. 12, pp. 13427–13441, 2015.
- [8] V. Llombart, T. García-Berrocso, A. Bustamante et al., “Plas-matic retinol-binding protein 4 and glial fibrillary acidic protein as biomarkers to differentiate ischemic stroke and intracerebral hemorrhage,” *Journal of Neurochemistry*, vol. 136, no. 2, pp. 416–424, 2016.
- [9] Y. Wang, Y. G. Wang, T. F. Ma, M. Li, and S. L. Gu, “Dynamic metabolites profile of cerebral ischemia/reperfusion revealed by (1) H NMR-based metabolomics contributes to potential biomarkers,” *International Journal of Clinical and Experimental Pathology*, vol. 7, no. 7, pp. 4067–4075, 2014.
- [10] F. Guo, F. Yu, J. Wang et al., “Expression of MALAT1 in the peripheral whole blood of patients with lung cancer,” *Biomedical Reports*, vol. 3, no. 3, pp. 309–312, 2015.
- [11] X. Li, Z. Zhao, C. Gao et al., “Identification of a peripheral blood long non-coding RNA (Upperhand) as a potential diagnostic marker of coronary artery disease,” *Cardiology Journal*, vol. 25, no. 3, pp. 393–402, 2018.
- [12] X. Li, Z. Zhao, C. Gao et al., “The diagnostic value of whole blood lncRNA ENST00000550337.1 for pre-diabetes and type 2 diabetes mellitus,” *Experimental and Clinical Endocrinology & Diabetes*, vol. 125, no. 6, pp. 377–383, 2017.
- [13] L. Zhang, W. J. Fang, K. M. Zhang et al., “Long noncoding RNA expression profile from cryptococcal meningitis patients identifies DPY19L1p1 as a new disease marker,” *CNS Neuroscience & Therapeutics*, vol. 25, no. 6, pp. 772–782, 2019.
- [14] T. R. Mercer, M. E. Dinger, and J. S. Mattick, “Long non-coding RNAs: insights into functions,” *Nature Reviews. Genetics*, vol. 10, no. 3, pp. 155–159, 2009.
- [15] X. Liu, L. Hou, W. Huang, Y. Gao, X. Lv, and J. Tang, “The mechanism of long non-coding RNA MEG3 for neurons apoptosis caused by hypoxia: mediated by mi R-181b-12/15-LOX signaling pathway,” *Frontiers in Cellular Neuroscience*, vol. 10, p. 201, 2016.
- [16] C. Dykstra-Aiello, G. C. Jickling, B. P. Ander et al., “Altered expression of long noncoding RNAs in blood after ischemic stroke and proximity to putative stroke risk loci,” *Stroke*, vol. 47, no. 12, pp. 2896–2903, 2016.
- [17] Y. Yang, A. Wang, X. Zhao et al., “The Oxfordshire Community Stroke Project classification system predicts clinical outcomes following intravenous thrombolysis: a prospective cohort study,” *Therapeutics and Clinical Risk Management*, vol. Volume 12, pp. 1049–1056, 2016.
- [18] C. Tian, L. Zhang, D. Dai et al., “lncRNA NR\_120420 promotes SH-SY5Y cells apoptosis by regulating NF- $\kappa$ B after oxygen and glucose deprivation,” *Gene*, vol. 728, article 144285, 2020.
- [19] J. Wang, H. Zhao, Z. Fan et al., “Long noncoding RNA H19 promotes neuroinflammation in ischemic stroke by driving histone deacetylase 1-dependent M1 microglial polarization,” *Stroke*, vol. 48, no. 8, pp. 2211–2221, 2017.