

Functional binding interaction identified between the axonal CAM L1 and members of the ERM family

Tracey C. Dickson,¹ C. David Mintz,^{1,3} Deanna L. Benson,^{1,2} and Stephen R.J. Salton^{1,2,4}

¹Fishberg Research Center for Neurobiology, ²Program in Cell Adhesion, ³Graduate Program in Neuroscience, and ⁴Department of Genetics, The Mount Sinai School of Medicine, New York, NY 10029

A yeast two-hybrid library was screened using the cytoplasmic domain of the axonal cell adhesion molecule L1 to identify binding partners that may be involved in the regulation of L1 function. The intracellular domain of L1 bound to ezrin, a member of the ezrin, radixin, and moesin (ERM) family of membrane–cytoskeleton linking proteins, at a site overlapping that for AP2, a clathrin adaptor. Binding of bacterial fusion proteins confirmed this interaction. To determine whether ERM proteins interact with L1 *in vivo*, extracellular antibodies to L1 were used to force cluster the protein on cultured hippocampal neurons and PC12 cells, which were then immunolabeled for ERM

proteins. Confocal analysis revealed a precise pattern of codistribution between ERMs and L1 clusters in axons and PC12 neurites, whereas ERMs in dendrites and spectrin labeling remained evenly distributed. Transfection of hippocampal neurons grown on an L1 substrate with a dominant negative ERM construct resulted in extensive and abnormal elaboration of membrane protrusions and an increase in axon branching, highlighting the importance of the ERM–actin interaction in axon development. Together, our data indicate that L1 binds directly to members of the ERM family and suggest this association may coordinate aspects of axonal morphogenesis.

Introduction

L1 is an axon-specific member of the Ig family of cell adhesion molecules (CAMs)* that functions in many aspects of neuronal development including cell migration, axon extension, fasciculation, guidance, and myelination (Hortsch, 1996). L1 is expressed predominantly in the developing nervous system (Salton et al., 1983) and is polarized in its distribution immediately after axon formation (van den Pol and Kim, 1993). The functional importance of this CAM is emphasized by the neurological syndromes (e.g., MASA and X-linked hydrocephalus) that result from mutations of the single gene encoding L1 in humans.

L1 family members exhibit a conserved structural organization consisting of extracellular Ig and fibronectin type III domains, a single transmembrane segment, and a cytoplasmic

domain ranging in size from 85 to 148 residues. Binding interactions with the intracellular and extracellular regions have the ability to transduce signals in both directions across the plasma membrane (Hortsch et al., 1998). The extracellular domain of L1 binds a variety of ligands, which include L1 itself, other members of the Ig superfamily, integrins, and extracellular matrix components (Brümmendorf and Rathjen, 1994; Montgomery et al., 1996). Cytoplasmic binding partners include cytoskeletal-associated proteins, protein kinases, and complexes associated with endocytosis and protein trafficking.

In particular, the cytoplasmic domain contains an ankyrin binding site, which couples L1 to the underlying actin cytoskeleton in a manner that can be negatively regulated by phosphorylation (Davis and Bennett, 1994; Hortsch et al., 1998). This interaction is suspected to stabilize L1 within the axonal membrane, an idea supported by the finding that axons eventually degenerate in mutant mice lacking ankyrin_B. However, initial axonal outgrowth and differentiation and the targeting of L1 to axons are relatively normal during early development in these mice, indicating ankyrin_B is not required for these events (Scotland et al., 1998). Alternative interactions with the cytoskeleton are likely to mediate some L1 functions during the earliest stages of axonal development. The cytoplasmic region also contains a neuronal-specific sequence, RSLE (Arg-Ser-Leu-Glu), that arises from alternative

Address correspondence to Deanna L. Benson, Box 1065/Dept. of Neurobiology, The Mount Sinai School of Medicine, 1425 Madison Ave., New York, NY 10029. Tel.: (212) 659-5906. Fax: (212) 996-9785. E-mail: deanna.benson@mssm.edu; or Stephen R.J. Salton, Dept. of Neurobiology/Box 1065, The Mount Sinai School of Medicine, 1425 Madison Ave., New York, NY 10029. Tel.: (212) 659-5906. Fax: (212) 996-9785. E-mail: stephen.salton@mssm.edu

D.L. Benson and S.R.J. Salton contributed equally to this work.

*Abbreviations used in this paper: CAM, cell adhesion molecules; ERM, ezrin, radixin, and moesin; GST, glutathione S-transferase.

Key words: cell adhesion molecules; neuronal polarity; hippocampus; ezrin; moesin

splicing and appears to be essential for sorting L1 to the axonal growth cone (Kamiguchi and Lemmon, 1998). This sequence also participates in the AP2 adaptor-mediated endocytosis of L1 (Kamiguchi et al., 1998), which is required for activation of the mitogen-activated protein kinase signaling pathway that governs L1-mediated neurite outgrowth (Schaefer et al., 1999).

Here, we identify a novel direct interaction between the cytoplasmic domain of L1 and the cytoskeletal-associated protein, ezrin. We further report that disruption of the ezrin-actin interaction dramatically alters neuronal morphology, suggesting that the L1-ezrin-actin interaction may be functionally important in the initial dynamic process of axonal outgrowth and neuronal differentiation.

Results and discussion

The cytoplasmic domain of L1 binds to ezrin

The cytoplasmic domain of L1 fused to the DNA binding domain of LexA was used as "bait" to screen a yeast two-hybrid library constructed from PC12 cells that had been treated for 24 h with NGF. Interactions between the cytoplasmic domain of L1 and either rat AP2 (medium subunit μ 1) or the cytoskeletal protein ankyrin_B were confirmed by this screen (Davis and Bennett, 1994; Kamiguchi et al., 1998). In addition, a strong and specific interaction was identified with ezrin (amino acids 1-406), a member of the ezrin, radixin, and moesin (ERM) family of proteins (Fig. 1). The COOH terminus of all ERM proteins binds directly to F-actin, whereas the NH₂ terminus (of ~300 residues) shares homology with a domain common to members of the 4.1 protein superfamily and has, therefore, been termed the FERM (fourpoint-one, ERM) domain. FERM domains are thought to be general transmembrane protein-binding modules (Mangeat et al., 1999). The membrane-cytoskeleton linker function of ERM proteins is negatively regulated by an intramolecular association between the FERM and COOH-terminal domains that masks and inactivates their respective binding sites. Phosphorylation of the actin binding tail and exposure to polyphosphatidyl inositides are both believed to contribute to activation of these molecules, providing the means to dynamically regulate cytoskeletal-membrane interactions. Such tightly controlled interactions are suspected to underlie ERM involvement in the development of cell type-specific morphologies (for review see Bretscher, 1999).

Table I. Summary of yeast two-hybrid interactions

	L1+RSLE	L1-RSLE	L1 Δ Y	L1trunc	L1RSLE Δ S
Ezrin	+	-	-	+	+
Ankyrin	+	+	+	-	+
AP2	+	-	-	+	+

The cytoplasmic domain of L1, with the RSLE alternatively spliced sequence, with a truncation at amino acid 1,182, or with serine1194 mutated to leucine, bound to ezrin. Baits: L1+RSLE (L1 COOH terminus with the RSLE alternatively spliced sequence), L1-RSLE (L1 COOH terminus without RSLE), L1 Δ Y (L1 COOH terminus with tyrosine adjacent to RSLE motif mutated to phenylalanine), L1trunc (L1 COOH terminus truncated at amino acid residue 1,182, E of the RSLE motif), L1RSLE Δ S (containing RSLE but with serine1194 of the rat sequence mutated to leucine). Trapped clones: ezrin, ankyrin, AP2.

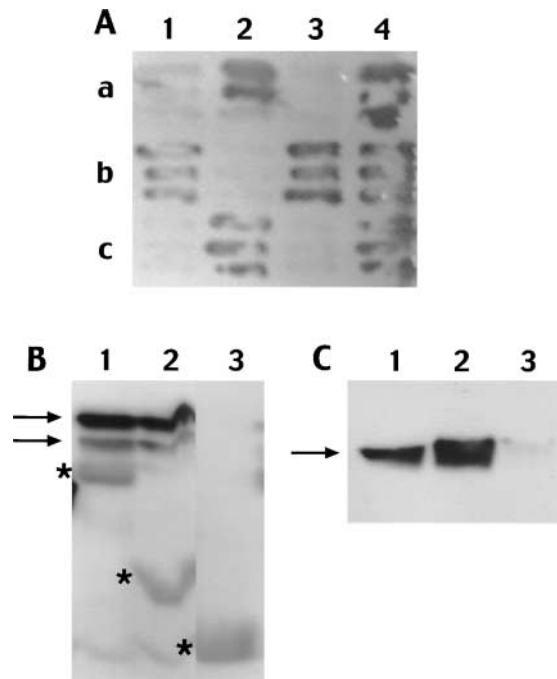


Figure 1. The L1 cytoplasmic domain showed strong specific interactions with rat AP2 and the membrane-cytoskeleton linker proteins ankyrin_B and ezrin. (A) An example of the yeast two-hybrid cotransformation assays shows ezrin (a) and AP2 (c) reacting with both truncated L1 (2) (L1 COOH terminus truncated at amino acid 1,182, E of the RSLE motif) and the full-length L1 COOH terminus (4) (with RSLE). However, ezrin did not interact with L1 Δ Y (1) (L1 COOH terminus with tyrosine adjacent to RSLE motif mutated to phenylalanine) or L1-RSLE (3) (L1 COOH terminus lacking RSLE), whereas ankyrin (b) interacted with both of these constructs. (B) Bacterial fusion proteins containing the L1 COOH termini bind to ezrin. GST-L1 (1) and GST-L1-truncated (2) bind ezrin (arrows), whereas GST alone (3) does not. Asterisks denote position of GST fusion proteins. (C) The GST-L1 (1) and GST-L1-truncated (2) fusion proteins were also both found to bind AP2 (arrow), whereas GST alone (3) does not.

Ezrin and AP2 interact with the same domain of L1

To further characterize the interaction between L1 and ezrin, several plasmids encoding the LexA DNA binding domain fused to the cytoplasmic domain of various L1 isoforms (full length, truncated, and mutant) were constructed. These plasmids were cotransformed in L40 with each of the rescued library plasmids and interactions assessed by β -galactosidase staining (Fig. 1). Our results indicate that the truncated L1 (L1 trunc), lacking the ankyrin binding domain (equivalent to MASA mutation truncation amino acid 1,180), binds to ezrin as effectively as the entire intracellular domain of L1. However, the L1 isoform lacking only the RSLE sequence fails to interact with ezrin. Mutating the tyrosine that precedes the RSLE sequence also prevents binding, whereas mutation of serine 1196 to leucine (equivalent to MASA mutation S1194L) does not affect binding (Table I). Identical data were obtained with AP2. Together these data suggest that ezrin binds to L1 at a site that is largely overlapping with that for AP2 and may even compete for the same domain in a way that could be regulated by phosphorylation, since enhanced ERM phosphorylation has been correlated with increased membrane-cytoskeleton association (Bretscher et al., 1997). Although the binding site has not been

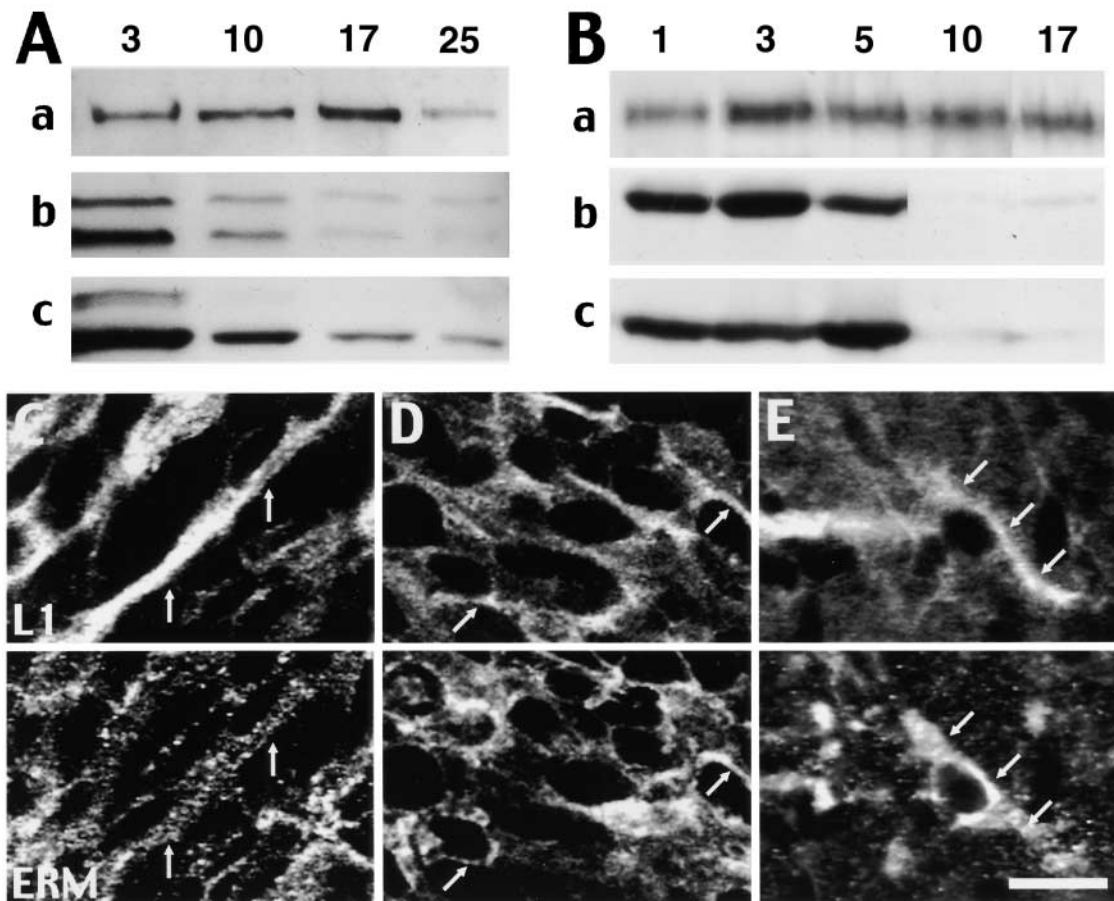


Figure 2. Immunoblots indicate that ezrin and moesin expression levels are highest in young neurons and drop off dramatically after the first week of growth. (A) In hippocampal neurons, levels of L1 (a) were highest at 3, 10, and 17 d growth. Levels of ezrin (b) and moesin (c) were highest at 3 d and decreased considerably after 10 d of growth. Ezrin and moesin levels decrease with long term NGF treatment of PC12 cells. (B) Ezrin (b) and moesin (c) levels of expression were greatest after 3 and 5 d, respectively, of differentiation and decreased dramatically after 10 d, whereas L1 levels gradually increased with NGF treatment. ERM proteins and L1 are codistributed in vivo. Arrows indicate examples of codistribution between L1 (top) and the ERM proteins (bottom) within the internal capsule (C), the temporal cortex (D), and the CA3 region of the hippocampus (E). Both labels were concentrated in the cortical edges of cell bodies; however, labeling was also evident within cell processes. Bar: (C and D) 13 μm ; (E) 17 μm .

mapped precisely, the YRSLE motif and select neighboring residues are conserved amongst L1 CAM family members including Ng-CAM, Nr-CAM, and neurofascin (Brophy, 2001). Only ezrin was isolated from the yeast two-hybrid library, but the NH₂-terminal domains of moesin and radixin are very similar, and where it has been examined, the three ERM proteins have largely overlapping function so it is likely that all ERM members will show similar interactions with L1.

Ezrin and L1 bind in vitro

To confirm the interaction between L1 and ezrin in vitro, the L1 cytoplasmic domain was expressed as a glutathione *S*-transferase (GST) fusion protein, and the trapped ezrin cDNA was expressed as a His- and *S*-tagged bacterial fusion protein. We found that GST-L1 and GST-(L1 trunc) bind ezrin, whereas GST alone does not, thereby confirming the interaction identified using the yeast two-hybrid assay (Fig. 1).

ERM family expression peaks during neural differentiation

We examined the developmental time course of ezrin and moesin expression using immunoblots of both cultured hip-

pocampal neurons and NGF-treated PC12 cells (Fig. 2). Ezrin and moesin levels are highest in the youngest (3–5 d in culture) hippocampal neurons, a time period notable for axonal polarization, outgrowth, and differentiation, and decrease dramatically after the first week in culture. In PC12 cells, ERM expression is highest in cultures treated with NGF for 3–5 d and decreases after 10 d of NGF treatment. Interestingly, the peak expression of the ERM family in both cell types occurs during neuronal process outgrowth and precedes that reported for ankyrin, which peaks at postnatal day 10 in cerebellar cell cultures (Kunimoto, 1995). These results suggest that the interaction between L1 and ezrin may play a role in the earliest events of neuronal morphogenesis.

L1 and the ERM family codistribute in vivo

In sections from P0 rat brain, L1 immunolabeling is most intense in axon tracts and in cell somata, residing in relatively undifferentiated regions like the cerebral cortex. This distribution is consistent with previous reports (Persohn and Schachner, 1990; Demyanenko et al., 1999). ERM labeling is more extensive, reflecting expression in several cell types.

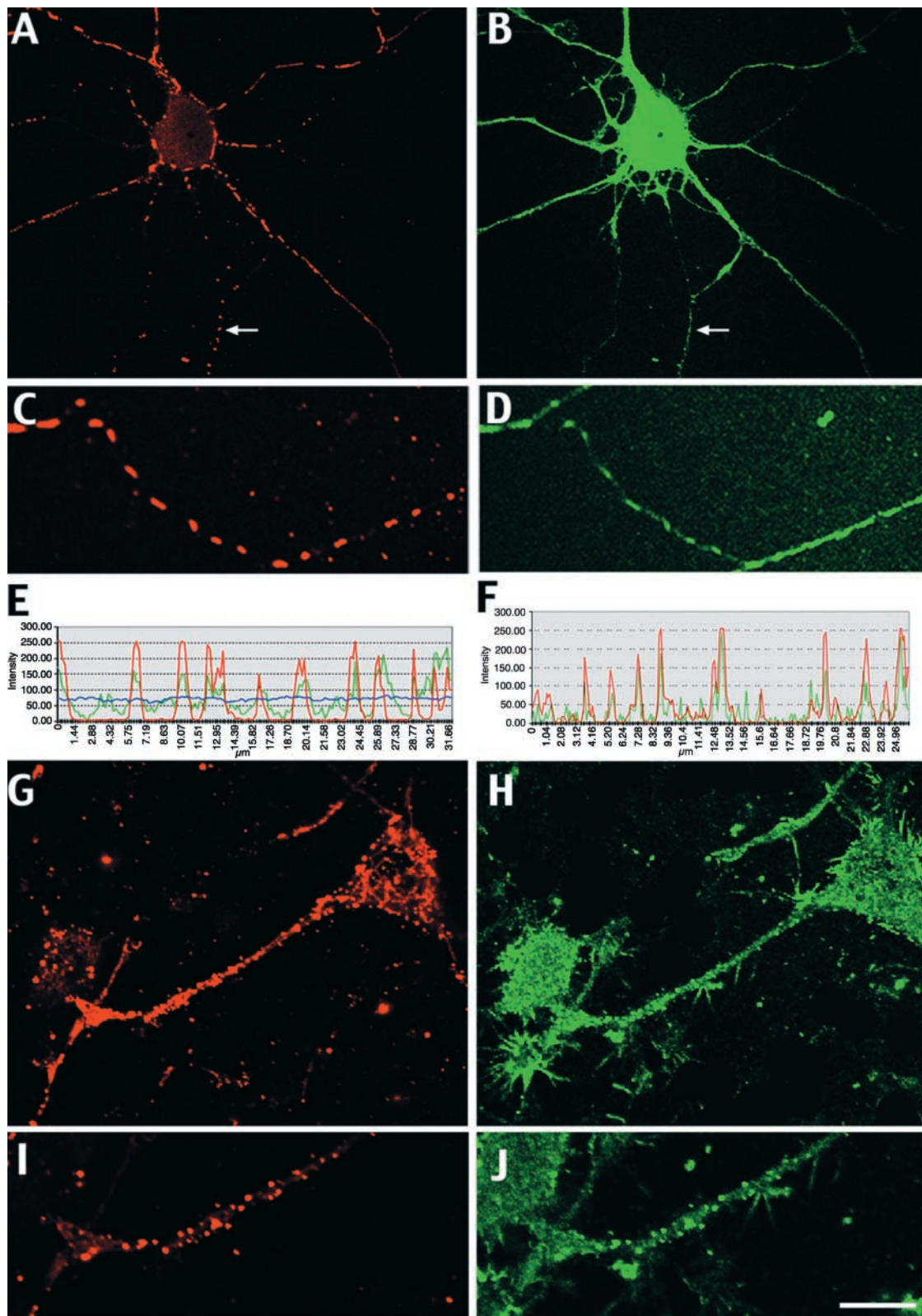


Figure 3. **L1 strongly interacts with ERM proteins in vivo.** (A and C) After forced L1 clustering, labeling exists as distinct patches along the axons (arrows). (Note that an axon from a neighboring cell can be seen wrapped around the cell soma and dendrites, a common phenomena in hippocampal cultures). (B and D) Clustering is also evident within axons labeled for the ERM proteins. ERM labeling within dendrites remained smooth. Fluorescence intensity profiles taken along axons in which L1 had been forced to cluster (E) confirmed these observations. Red, green, and blue lines represent L1, ERM, and DIC labeling profiles, respectively. Similarly, forced L1 clustering (G and I) in differentiated PC12 cells resulted in clustering of ERM labeling (H and J). Quantification of labeling along neurites confirmed these observation (F). Bar: (A and B) 16 μm ; (C and D) 11 μm ; (G and H) 12 μm ; (I and J) 8 μm .

Double labeling shows the proteins are codistributed in several regions (Fig. 2, C–E).

ERM family concentrates in structures undergoing rapid morphogenesis

In hippocampal neurons, immunolabeled ERMs are distributed in axons and dendrites but are most prominent in actin-rich structures like axonal and dendritic growth cones (Goslin et al., 1989; Paglini et al., 1998). Their distribution in cultured fibroblasts and epithelial cells is analogous; ERM proteins are expressed and concentrated at cell surface structures, such as microvilli, ruffling membranes, and cell–cell/cell–matrix adhesion sites (Bretscher, 1999). In neurons, occasional foci of ERM labeling are also noted along processes that are sometimes associated with branch points (unpublished data), a pattern consistent with the notion that ERM interactions are critical for the genesis of cell specific morphologies. Unlike L1, the ERM family is not polarized to axons, indicating there is likely to be an alternative binding partner(s) for the ERM family in dendrites.

L1 and the ERM family interact in vivo

To examine interactions between L1 and the ERM family in vivo, antibodies were used to force cluster L1 on the surface of hippocampal neuron axons and on PC12 neurites, at 37°C, in the presence of phenylarsine oxide, a general inhibitor of endocytosis (Doré et al., 1997), or at 12°C (Harder et al., 1998), and the effect on ERM distribution was assessed. All three treatments yield similar results. However, to rule out the contribution of endocytosis quantification data are restricted to 12°C and phenylarsine oxide experiments. In both cell types, antibody-induced capping dramatically changes the labeling pattern for L1 from a smooth continuous distribution to distinct focal clusters (Fig. 3). Double labeling for L1 and the ERM family reveals a precisely coincident pattern of clusters that in the hippocampal neurons is restricted to axons. Digital fluorescence profiles of L1 and ERM-labeled clusters within axons and neurites confirm the distinct colocalization pattern as exhibited by shared peaks in fluorescence intensity (hippocampal neurons correlation coefficient = 0.736, $p = <0.0001$; PC12 cells correlation coefficient = 0.744, $p = <0.0001$). PCR analysis was used to confirm that all rat PC12 cells used express only full-length (+RSLE) L1 (Miura et al., 1991; Takeda et al., 1996). Labeling for spectrin, another cortical actin-associated protein, was not altered by the forced clustering of L1 and remained smooth throughout the axon (Fig. 4, A–D). L1-forced clustering investigations were also performed in Schwann cells, which express exclusively an L1 variant lacking the cytoplasmic RSLE sequence (Martini et al., 1994; Takeda et al., 1996). In these cells, L1 clustering did not alter ERM protein labeling (Fig. 4, E and F). Together these data provide strong evidence that L1 and ERM proteins interact in vivo, that this interaction is specific for the ERM family of actin binding proteins, and that it requires the RSLE minixon.

Disruption of ezrin–actin interaction alters morphogenesis

Functional studies of the ERM family indicate they play an essential role in the establishment of characteristic cell type–

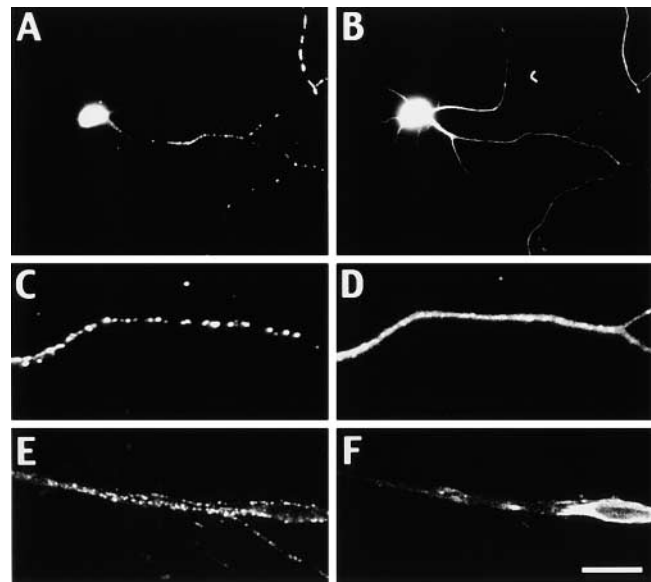


Figure 4. **The L1–ERM interaction is specific.** Forced clustering of L1 in hippocampal neurons (A and C) had no effect on the labeling pattern of spectrin, which remained smooth throughout the axon and dendrites (B and D). Clustering of L1-RSLE in Schwann cells (E) had no effect on ERM protein labeling (F). Bar: (A and B) 25 μm ; (C and D) 5 μm ; (E and F) 18 μm .

specific morphology. Previous work has shown that overexpression of the NH₂ terminus of ezrin alone fused to GFP (N-Ez–GFP) acts as a potent dominant negative (Crepaldi et al., 1997), presumably by disabling the ERM–actin link. In the current investigation, N-Ez–GFP–transfected neurons, grown on L1 substrates for 72 h, exhibit significantly more axonal branching compared with GFP-transfected neurons (mean axonal branches N-Ez–GFP = 3.0, GFP = 1.0; $p = 0.0051$) and compared with transfected neurons cultured on either laminin or poly-L-lysine. Independent of substrate, cells transfected with N-Ez–GFP elaborate numerous fine protrusions that resembled extended filopodia more than genuine branches (mean number fine protrusions on L1 substrate, N-Ez–GFP = 99.2, GFP = 0.3; $p < 0.0001$) (Fig. 5). These protrusions range in length from 2 to 25 μm and are immunopositive for L1 and endogenous ERM proteins. The phenomena becomes more prevalent in axons as the neurons mature (unpublished data). The protrusions we observe resemble the long fragile processes seen when similar N-ERM constructs are overexpressed in insect cells, NIH3T3 cells, or MDCK cells (Martin et al., 1997; Amieva et al., 1999; Woodward and Crouch, 2001) and together suggest the L1–ERM–actin interaction may be playing an important functional role in membrane and cytoskeleton stabilization required for appropriate axonal arborization, branching, and early neuronal morphogenesis.

The self-associating activity exhibited by the full-length ERM family members has inhibited the search for their binding partners using standard coimmunoprecipitation methods (Bretscher et al., 1997; Vaheri et al., 1997). We too were unable to coimmunoprecipitate these proteins despite using a variety of different approaches. However, collectively our results indicate that the ezrin–L1 interaction is

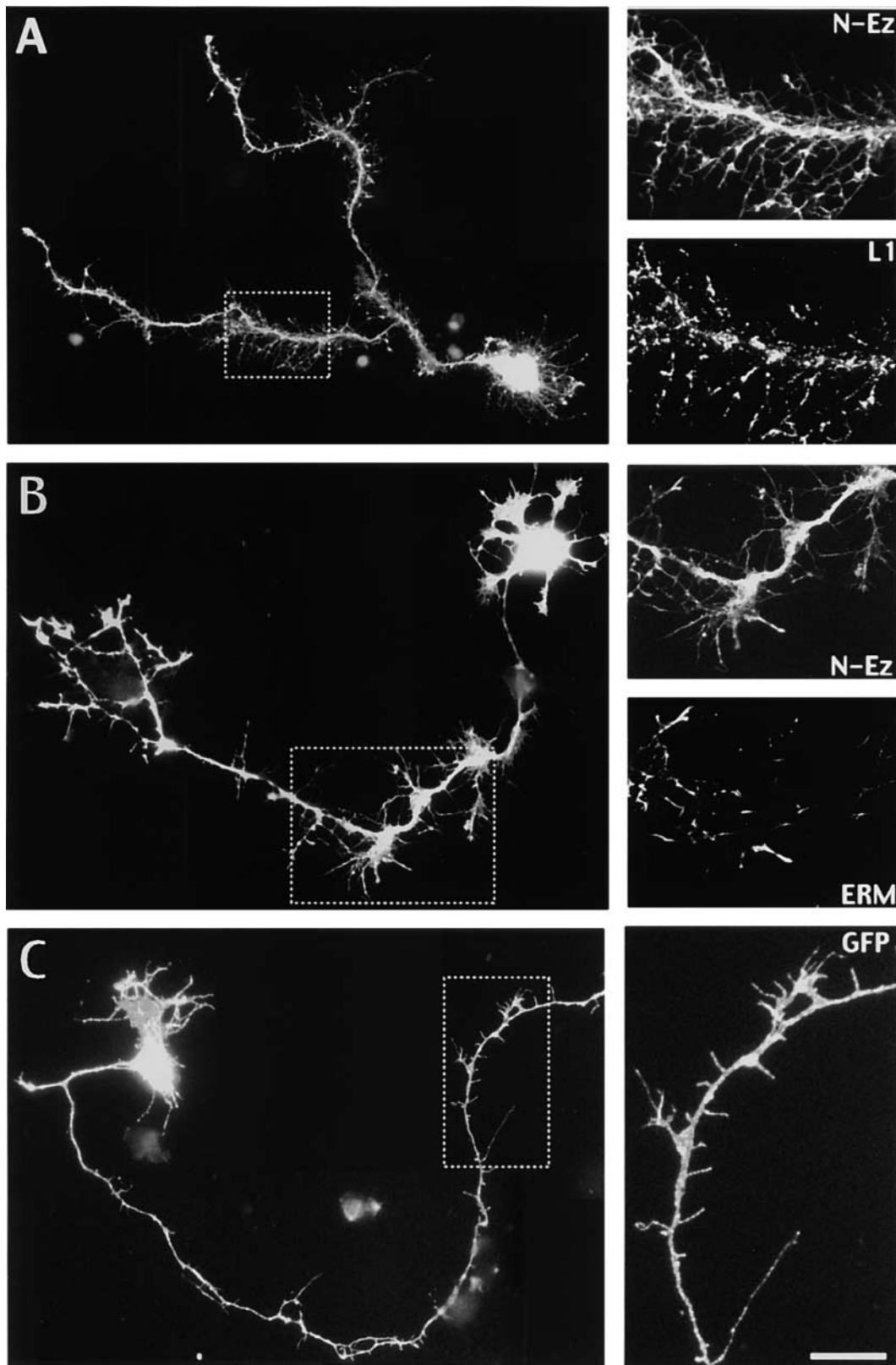


Figure 5. Expression of ezrin NH₂ terminus dominant negative causes abnormal morphogenesis. (A) Transfection of neurons grown on an L1 substrate with a construct encoding the NH₂ terminus of ezrin fused to GFP resulted in increased axonal branching and the growth of abnormal numbers of long branchlets and filopodia-like protrusions. High power insets of boxed region show localization of L1 throughout N-Ez-GFP protrusions. (B) Transfection of neurons cultured on laminin had no significant effect on branching; however, similar filopodia-like protrusions were noted. High power images of boxed regions show localization of endogenous ERM proteins concentrated at the tips of N-Ez-GFP protrusions. (C) Transfection of hippocampal neurons cultured on an L1 substrate with the pEGFP-F' vector (no insert) indicates normal growth at DIV 3. Inset shows high power image of normal axonal growth. Bar: (A) 30 μ m; (A, insets) 11 μ m; (B) 24 μ m; (B, insets) 17 μ m; (C) 24 μ m; (C, inset) 10 μ m.

direct and analogous to interactions described previously for ERMs and other transmembrane proteins (Tsukita et al., 1994; Helander et al., 1996), including neurofascin, another member of the Ig family of CAMs (Brophy, 2001). In other cell types, ERM proteins are critical regulators of cytoskeletal plasma membrane interaction, especially in polarized cells, and important components of signal transduction pathways. Similarly, interactions between the ERM family and L1 in neurons may locally regulate adhesion or coordinate morphogenesis.

Materials and methods

Yeast two-hybrid

Libraries were screened as described previously (Bartel et al., 1993). The DNA binding domain of LexA was coupled to the cytoplasmic domain of rat L1, NILE (amino acids 1,146–1,259) in the plasmid pBTM116-KN-Ade2. The activation domain was fused to two PC12 cDNA libraries, either randomly or oligo dT primed, in plasmid pGADGH constructed using RNA isolated from rat PC12 cells treated for 24 h with NGF (cDNA libraries provided by Drs. S. Tsui and S. Halegoua, State University of New York, Stony Brook, NY). The sites and specificity of *in vivo* binding were characterized by cotransforming the yeast strain L40 with each of the rescued library plasmids and one of a series of plasmids encoding LexA fusion proteins.

In vitro binding

“Bait” inserts were cloned into the plasmid pGEX-5 × 2 and all “trapped” cDNAs cloned into the plasmid pET-30b. Protein expression was induced with IPTG, and bacterial proteins were isolated by sonication in PBS (GST proteins) or Tris-imidazole (pET proteins) and centrifugation. GST fusion proteins were bound to glutathione-agarose at room temperature, washed extensively in PBS-0.05% Tween20, and then incubated for 1 h at 4°C with crude extracts of S-tagged proteins. The resin was washed extensively in PBS-Tween at room temperature and eluted with 15 mM reduced glutathione in PBS. Eluates were concentrated and analyzed by SDS-PAGE and immunoblotting using an S protein HRP conjugate (Novagen) and ECL detection.

Cell cultures

Dissociated hippocampal neurons were prepared from hippocampi of embryonic day 18 Sprague Dawley rats as described previously (Benson et al., 1994). Cells were plated at a density of 3,600 cells/cm² on poly-L-lysine and laminin (25 µg/ml) or L1-Fc substrates (2 µg/ml). L1 substrates were prepared according to De Angelis et al. (1999). The plg expression plasmid containing an insert of L1-Fc was provided by Dr. J.L. Salzer (New York University School of Medicine). Neurons were maintained in Neurobasal medium containing B27 supplements. PC12 cells were cultured on poly-L-lysine and collagen-coated coverslips in RPMI 1640 containing 10% horse serum and 5% FCS and differentiated using NGF as described previously (Salton et al., 1983). Schwann cells were prepared as described (A.F. Svenningsen and L. Pedraza, personal communication), and their identification was confirmed using immunolabeling for S100 (rabbit polyclonal, 1:250; Dako).

Immunoblots

Cultured hippocampal neurons (3–25 d growth) were homogenized as described previously (Benson and Tanaka, 1998). PC12 cells were NGF treated and harvested in 2× SDS sample buffer (0–20 d differentiation). Equal protein amounts were fractionated on 7.5% SDS-polyacrylamide gels then transferred to PVDF paper. Blots were probed with either goat antiezrin (C19, 1:1,000; Santa Cruz Biotechnology, Inc.), rabbit antiezrin (1:1,000; Upstate Biotechnology), rabbit antimoesin (1:1,000; Upstate Biotechnology), or goat anti-L1 (1:1,000; Santa Cruz Biotechnology, Inc.) incubated in HRP-conjugated species-specific secondary antibodies (Amersham Pharmacia Biotech), washed, and visualized with ECL.

Immunohistochemistry

Neuronal cultures were labeled with either rabbit antiezrin (1:1,000; Upstate Biotechnology) or moesin (1:1,000; Upstate Biotechnology) or a mouse IgM monoclonal antibody to the ERM family (clone 13H9) (1:50; a gift from Professor F. Solomon, Massachusetts Institute of Technology, Cambridge, MA [Goslin et al., 1989]). For tissue localization studies, P0 rat

pups were transcardially perfused with 4% paraformaldehyde, postfixed overnight in 4% paraformaldehyde, incubated in 7% sucrose/PBS, and then vibratome sectioned (sagittal plane) at 100 µm. Sections were blocked (3% BSA, 2 h) and then double labeled with a rabbit anti-L1 (1:1,000; a gift from Dr. C. Lagenaur, University of Pittsburgh School of Medicine, Pittsburgh, PA [Lemmon et al., 1989]) and the mouse monoclonal to the ERMs (13H9; 1:100). Labeling in both cultures and tissue sections was visualized with anti-IgM-FITC (Jackson ImmunoResearch Laboratories) and/or Texas red anti-rabbit (Vector Laboratories) secondary antibodies. Single labeled sections were used to confirm distribution patterns.

Antibody-induced clustering

Antibodies to L1 were used to force cluster the proteins on cultured hippocampal neurons, NGF-differentiated PC12 cells, and Schwann cells before immunolabeling for ERM proteins. Primary antibodies directed to the extracellular region of L1 (neat supernatant, mouse monoclonal, ASCS4, Developmental Studies Hybridoma Bank) was applied to live cultures for 15 min. Protein clustering was amplified by the application of a biotinylated anti-mouse secondary antibody (1:200; Vector Laboratories) for 2 h. Cells were then fixed and double labeled for ERM proteins (13H9; 1:20) or spectrin (rabbit polyclonal [240/235], 1:20; Chemicon). (Note that Ezrin specific antibodies used for Western blots could not be used for immunohistochemistry.) L1 labeling was visualized with a streptavidin-Cy3-conjugated antibody (Jackson ImmunoResearch Laboratories); ERM labeling was visualized as described above, and spectrin was visualized with an anti-rabbit FITC (Cappel). To inhibit endocytosis, live incubations were performed either at 12°C or in the presence of 20 µM phenylarsine oxide, both without permeabilization. Confocal scanning laser microscopy was used to investigate all immunolabeling and transfections (Leica TCS-SP [UV]). Correlation coefficients were calculated from fluorescence intensity profiles taken along 20–30-µm lengths of 15 labeled axons (hippocampal neurons) or neurites (PC12s) from three different experiments.

Construction of mutant cDNA encoding the NH₂-terminal domain of ezrin

The NH₂-terminal domain of ezrin was obtained by digesting of the complete coding sequence of human ezrin (a gift from Dr. M. Arpin, Institut Curie, Paris, France) (Algrain et al., 1993) with HindIII and XmaI. This fragment (1,042 bp) was inserted, in frame, into the corresponding sites in the vector pEGFP-N1 (CLONTECH Laboratories, Inc.) and sequenced. Neurons on different substrates (see Results) were transfected at plating using Effectene (QIAGEN) according to the manufacturer's instructions and fixed after 24–72 h. Control transfections using pEGFP-F' (CLONTECH Laboratories, Inc.), a farnesylated form of EGFP that is targeted to the plasma membrane, or plasmid without insert were performed concurrently. All processes of six pEGFP-F'- and six N-Ez-GFP-transfected neurons grown on L1 or laminin or poly-L-lysine substrates were traced and analyzed using the NeuroLucida 2000 system (MicroBrightField, Inc.). Endogenous ERM and L1 distribution was labeled in transfected cells using the antibodies described above. Experiments were repeated in three different hippocampal cultures.

We thank Dr. B. Winkler for critical reading of the article, Drs. F. Solomon and C. Lagenaur for antibodies, Drs. S. Tsui and S. Halegoua for yeast two-hybrid advice and reagents, Dr. J.L. Salzer for the plg L1-Fc vector, and Dr. A.F. Svenningsen for Schwann cell cultures.

This work was supported by AA12971 (to D.L. Benson and S.R.J. Salton) and a C.J. Martin fellowship (to T.C. Dickson). Confocal microscopy was performed at the MSSM-CLSM core facility supported with funding from a National Institutes of Health shared instrumentation grant (S10 RR0 9145) and a National Science Foundation Major Research Instrumentation grant (DBI-9724504).

Submitted: 20 November 2001

Revised: 25 April 2002

Accepted: 8 May 2002

References

- Algrain, M., O. Turunen, A. Vaheri, D. Louvard, and M. Arpin. 1993. Ezrin contains cytoskeleton and membrane binding domains accounting for its proposed role as a membrane-cytoskeletal linker. *J. Cell Biol.* 120:129–139.
- Amieva, M.R., P. Litman, L. Huang, E. Ichimaru, and H. Furthmayr. 1999. Disruption of dynamic cell surface architecture of NIH3T3 fibroblasts by the

- N-terminal domains of moesin and ezrin: *in vivo* imaging with GFP fusion proteins. *J. Cell Sci.* 112:111–125.
- Bartel, P.L., C.-T. Chien, R. Sternglanz, and S. Fields. 1993. Using the two-hybrid system to detect protein-protein interactions. In *Cellular Interactions in Development: A Practical Approach*. Oxford University Press, New York. 153–179.
- Benson, D.L., and H. Tanaka. 1998. N-cadherin redistribution during synaptogenesis in hippocampal neurons. *J. Neurosci.* 18:6892–6904.
- Benson, D.L., F.H. Watkins, O. Steward, and G. Banker. 1994. Characterization of GABAergic neurons in hippocampal cell cultures. *J. Neurocytol.* 23:279–295.
- Bretscher, A. 1999. Regulation of cortical structure by the ezrin-radixin-moesin protein family. *Curr. Opin. Cell Biol.* 11:109–116.
- Bretscher, A., D. Rezek, and M. Berryman. 1997. Ezrin: a protein requiring conformational activation to link microfilaments to the plasma membrane in the assembly of cell surface structures. *J. Cell Sci.* 110:3011–3018.
- Brophy, P.J. 2001. Axoglial junctions: separate channels or scramble the message. *Curr. Biol.* 11:R555–R557.
- Brümmendorf, T., and F.G. Rathjen. 1994. Cell adhesion molecules 1: immunoglobulin superfamily. *Prot. Profile.* 1:951–1058.
- Crepaldi, T., A. Gatreau, P.M. Comoglio, D. Louvard, and M. Arpin. 1997. Ezrin is an effector of hepatocyte growth factor-mediated migration and morphogenesis in epithelial cells. *J. Cell Biol.* 138:423–434.
- Davis, J.Q., and V. Bennett. 1994. Ankyrin binding activity shared by the neurofascin/L1/NCAM family of nervous system cell adhesion molecules. *J. Biol. Chem.* 269:27163–27166.
- De Angelis, E., J. MacFarlane, J.-S. Du, G. Yeo, R. Hicks, F.G. Rathjen, S. Kendrick, and T. Brümmendorf. 1999. Pathological missense mutations of neural cell adhesion molecule L1 affect homophilic and heterophilic binding activities. *EMBO J.* 18:4744–4753.
- Demyanenko, G.P., A.Y. Tsai, and P.F. Maness. 1999. Abnormalities in neuronal process extension, hippocampal development, and the ventricular system of L1 knockout mice. *J. Neurosci.* 19:4907–4920.
- Doré, S., S. Kar, and R. Quirion. 1997. Presence and differential internalization of two distinct insulin-like growth factor receptors in rat hippocampal neurons. *Neuroscience.* 78:373–383.
- Goslin, K., E. Birgbauer, G. Banker, and F. Solomon. 1989. The role of cytoskeleton in organizing growth cones: a microfilament-associated growth cone component depends upon microtubules for its localization. *J. Cell Biol.* 109:1621–1631.
- Harder, T., P. Scheiffele, P. Verade, and K. Simons. 1998. Lipid domain structure of the plasma membrane revealed by patching of membrane components. *J. Cell Biol.* 141:929–942.
- Helander, T.S., O. Carpen, O. Turunen, P.E. Kovanen, A. Vaheri, and T. Timonen. 1996. ICAM-2 redistributed by ezrin as a target for killer cells. *Nature* 382:265–268.
- Hortsch, M. 1996. The L1 family of neural cell adhesion molecules: old proteins performing new tricks. *Neuron.* 17:587–593.
- Hortsch, M., D. Homer, J.D. Malhotra, S. Chang, J. Frankel, G. Jefford, and R.R. Dubreuil. 1998. Structural requirements for outside-in and inside-out signaling by *Drosophila* neuroglian, a member of the L1 family of cell adhesion molecules. *J. Cell Biol.* 142:251–261.
- Kamiguchi, H., and V. Lemmon. 1998. A neuronal form of the cell adhesion molecule L1 contains a tyrosine-based signal required for sorting to the axonal growth cone. *J. Neurosci.* 18:3749–3756.
- Kamiguchi, H., K.E. Long, M. Pendergast, A.W. Schaefer, I. Rapoport, T. Kirchausen, and V. Lemmon. 1998. The neural cell adhesion molecule L1 interacts with the AP-2 adaptor and is endocytosed via the clathrin-mediated pathway. *J. Neurosci.* 18:5311–5321.
- Kunimoto, M. 1995. A neuron specific isoform of brain ankyrin_B, is targeted to the axons of rat cerebellar neurons. *J. Cell Biol.* 131:1821–1829.
- Lemmon, V., K.L. Farr, and C. Lagenaur. 1989. L1-mediated axon outgrowth occurs via a homophilic binding mechanism. *Neuron.* 2:1597–1603.
- Mangeat, P., C. Roy, and M. Martin. 1999. ERM proteins in cell adhesion and membrane dynamics. *Trends Cell Biol.* 9:187–192.
- Martin, M., C. Roy, P. Montcourrier, A. Sahuquet, and P. Mangeat. 1997. Three determinants in ezrin are responsible for cell extension activity. *Mol. Biol. Cell.* 8:1543–1557.
- Martini, R., Y. Xin, and M. Schachner. 1994. Restricted localization of L1 and N-CAM at sites of contact between Schwann cells and neurites in culture. *Glia.* 10:70–74.
- Miura, M., M. Kobayashi, H. Asou, and K. Uyemura. 1991. Molecular cloning of cDNA encoding the rat neural cell adhesion molecule L1. Two isoforms in the cytoplasmic region are produced by differential splicing. *FEBS Lett.* 289:91–95.
- Montgomery, A.M.P., J.C. Becker, C.H. Siu, V.P. Lemmon, D.A. Cheresch, J.D. Pancook, X. Zhao, and R.A. Reisfeld. 1996. Human neural cell adhesion molecule L1 and rat homologue NILE are ligands for integrin α VB3. *J. Cell Biol.* 132:475–485.
- Paglino, G., P. Kunda, S. Quiroga, K. Kosik, and A. Caceres. 1998. Suppression of radixin and moesin alters growth cone morphology, motility, and process formation in primary cultured neurons. *J. Cell Biol.* 143:443–455.
- Persohn, E., and M. Schachner. 1990. Immunohistological localization of the neural adhesion molecules L1 and N-CAM in the developing hippocampus of the mouse. *J. Neurocytol.* 19:807–819.
- Salton, S.R.J., C. Richter-Landsberg, L.A. Greene, and M.L. Shelanski. 1983. Nerve growth factor-inducible large external (NILE) glycoprotein: studies of a central and peripheral neuronal marker. *J. Neurosci.* 3:441–454.
- Schaefer, A.W., H. Kamiguchi, E.V. Wong, C.M. Beach, G. Landreth, and V. Lemmon. 1999. Activation of the MAPK signal cascade by the neural cell adhesion molecule L1 requires L1 internalization. *J. Biol. Chem.* 274:37965–37973.
- Scotland, P., D. Zhou, H. Benveniste, and V. Bennet. 1998. Nervous system defects of Ankyrin_B ($-/-$) mice suggest functional overlap between the cell adhesion molecule L1 and 440-kD ankyrin_B in premyelinated axons. *J. Cell Biol.* 143:1305–1315.
- Takeda, Y., H. Asou, Y. Murakami, M. Miura, M. Kobayashi, and K. Uyemura. 1996. A nonneuronal isoform of cell adhesion molecule L1: tissue-specific expression and functional analysis. *J. Neurochem.* 66:2338–2349.
- Tsukita, S., K. Oishi, N. Sato, J. Sagara, A. Kawai, and Sh. Tsukita. 1994. ERM family members as molecular linkers between the cell surface glycoprotein CD44 and actin-based cytoskeletons. *J. Cell Biol.* 126:391–401.
- Vaheri, A., O. Carpen, L. Heiska, T.S. Helande, J. Jaaskelainen, P. Majander-Nordenswan, M. Sainio, T. Timonen, and O. Turunen. 1997. The ezrin protein family: membrane-cytoskeleton interactions and disease associations. *Curr. Opin. Cell Biol.* 9:659–666.
- van den Pol, A.N., and W.T. Kim. 1993. NILE/L1 and NCAM-polysialic acid expression on growing axons of isolated neurons. *J. Comp. Neurol.* 332:237–257.
- Woodward, A.M., and D.H. Crouch. 2001. Cellular distributions of the ERM proteins in MDCK epithelial cells: regulation by growth and cytoskeletal integrity. *Cell Biol. Int.* 25:205–213.