

**Keywords:** gastric cancer; bone marrow-derived stromal cells; CD271; prognostic marker; tumour microenvironment; mesenchymal stem cells

# Bone marrow-derived stromal cells are associated with gastric cancer progression

H Kasashima<sup>1</sup>, M Yashiro<sup>\*,1,2</sup>, H Nakamae<sup>3</sup>, G Masuda<sup>1</sup>, H Kinoshita<sup>1</sup>, T Morisaki<sup>1</sup>, T Fukuoka<sup>1</sup>, T Hasegawa<sup>1</sup>, K Sakurai<sup>1</sup>, T Toyokawa<sup>1</sup>, N Kubo<sup>1</sup>, H Tanaka<sup>1</sup>, K Muguruma<sup>1</sup>, M Ohira<sup>1</sup>, T Nakane<sup>3</sup>, M Hino<sup>3</sup> and K Hirakawa<sup>1</sup>

<sup>1</sup>Department of Surgical Oncology, Osaka City University Graduate School of Medicine, 1-4-3 Asahi-machi, Abeno-ku, Osaka 545-8585, Japan; <sup>2</sup>Oncology Institute of Geriatrics and Medical Science, Osaka City University Graduate School of Medicine, Osaka, Japan and <sup>3</sup>Department of Hematology, Osaka City University Graduate School of Medicine, Osaka, Japan

**Background:** The aim of this study was to clarify the role of bone marrow-derived stromal cells (BM-SCs) expressing CD271 in the development of gastric cancer.

**Methods:** The effect of human BM-SCs on the proliferation and motility of six gastric cancer cell lines, OCUM-2M, OCUM-2MD3, OCUM-12, KATO-III, NUGC-3, and MKN-74, was examined. CD271 expression levels in BM-SCs were analysed by flow cytometry. We also generated a gastric tumour model by orthotopic inoculation of OCUM-2MLN cells in mice that had received transplantation of bone marrow from the CAG-EGFP mice. The correlation between the clinicopathological features of 279 primary gastric carcinomas and CD271 expression in tumour stroma was examined by immunohistochemistry.

**Results:** Numerous BM-SCs infiltrated the gastric tumour microenvironment; CD271 expression was found in ~25% of BM-SCs. Conditioned medium from BM-SCs significantly increased the proliferation of gastric cancer cell lines. Furthermore, conditioned medium from gastric cancer cells significantly increased the number of BM-SCs, whereas migration of OCUM-12 and NUGC-3 cells was significantly increased by conditioned medium from BM-SCs. CD271 expression in stromal cells was significantly associated with macroscopic type-4 cancers, diffuse-type tumours, and tumour invasion depth. The overall survival of patients ( $n = 279$ ) with CD271-positive stromal cells was significantly worse compared with that of patients with CD271-negative stromal cells. This is the first report of the significance of BM-SCs in gastric cancer progression.

**Conclusions:** Bone marrow-derived stromal cells might have an important role in gastric cancer progression, and CD271-positive BM-SCs might be a useful prognostic factor for gastric cancer patients.

Tumour progression is recognised as the product of evolving crosstalk between cancer cells and a variety of stromal components, including fibroblasts, vascular cells, inflammatory cells, and extracellular matrix (Kalluri and Zeisberg, 2006). Of these cells, fibroblasts constitute a major stromal compartment and have a critical role in the progression of carcinoma. Although recent studies on tumour microenvironments report that the interaction between cancer cells and cancer-associated fibroblasts (CAFs) might be important for the progression of some types of carcinomas (Yashiro and Hirakawa, 2010; Fuyuhiko *et al*, 2012; Tripathi *et al*, 2012; Harper and Sainson, 2014), the origin of CAFs

in tumour stroma is still unknown. Several studies reported that mesenchymal stem cells (MSCs) are recruited into tumour stroma (Karnoub *et al*, 2007; Bergfeld and DeClerck, 2010; Shinagawa *et al*, 2010) as well as injured tissue; however, some studies revealed that CAFs originate from various cells (Huang *et al*, 2014) including normal resident fibroblasts (Mueller *et al*, 2007), vascular endothelial cells (Zeisberg *et al*, 2007), or vascular smooth muscle cells and pericytes (Ronnov-Jessen *et al*, 1995). It has been reported that MSCs in tumour stroma might differentiate into a variety of non-haematopoietic stromal cells including fibroblasts (Suzuki *et al*, 2011; De Boeck *et al*, 2013). In particular, bone

\*Correspondence: Dr M Yashiro; E-mail: m9312510@med.osaka-cu.ac.jp

Received 25 January 2015; revised 23 May 2015; accepted 27 May 2015; published online 30 June 2015

© 2015 Cancer Research UK. All rights reserved 0007–0920/15

marrow-derived stromal cells (BM-SCs) are the most likely candidate MSCs recruited into the tumour microenvironment (Houghton *et al*, 2004). Although the significance of CAFs has been reported (Quirici *et al*, 2002; Das *et al*, 2013; Rasini *et al*, 2013; Watson *et al*, 2013), no report of the importance of BM-SCs in the tumour microenvironment is available.

Some markers, including CD13, CD15, CD73, CD140b, CD144, CD146, CD164, and CD271, have been used to identify MSCs (Buhning *et al*, 2009; Boxall and Jones, 2012). Among these, CD271, also called neural crest nerve growth factor receptor, is reported as a marker of MSCs (Quirici *et al*, 2002; Das *et al*, 2013; Rasini *et al*, 2013; Watson *et al*, 2013), especially BM-SCs (Jones *et al*, 2008; Noort *et al*, 2012). In this study, as we are interested in BM-SCs as the origin of myofibroblast, CD271 antibody was used as a marker of BM-SCs. We have previously performed the vimentin and  $\alpha$ -SMA immunostaining of gastric cancer, and reported that myofibroblasts defined as positive for vimentin and  $\alpha$ -SMA staining are associated with Borrmann type-4 gastric cancer and poor prognosis of patients with gastric carcinoma (Fuyuhiko *et al*, 2010). Therefore, we examined the correlation between BM-SCs as CD271-positive stromal cells and clinicopathological features in gastric cancer. This is the first report of the significance of BM-SCs in gastric cancer microenvironments.

## MATERIALS AND METHODS

**Gastric carcinoma model.** Animal experiments were performed in compliance with the guidelines of the Osaka City University Ethical Committee. *In vivo* experiments were carried out on 4-week-old female athymic BALB/c nude mice (CLEA Japan, Tokyo, Japan). Bone marrow transplants were performed as reported previously (Ishii *et al*, 2003; Karnoub *et al*, 2007; Caiado *et al*, 2013). Nude mice received a whole-body sublethal irradiation (4Gy) and then received an intravenous injection of  $5 \times 10^6$  bone marrow mononuclear cells collected from femurs and tibias of the CAG-EGFP mice (Japan SLC, Hamamatsu, Japan). Mice with bone marrow transplantation were allowed to recover for 2–4 weeks, and orthotopic implantation of gastric cancer cells was performed on the mice as reported previously (Fujihara *et al*, 1998; Kato *et al*, 2010). After a small median abdominal incision under sevoflurane anaesthesia,  $5 \times 10^6$  OCUM-2MLN cells (Fujihara *et al*, 1998) in a volume of 0.1 ml DMEM were inoculated into the stomach with 30-gauge needles (Nipro, Tokyo, Japan). These mice were killed 6 weeks after the tumour cell inoculation. After killing the animal, the gastric tumours were removed and frozen in liquid nitrogen, cryosectioned, mounted onto glass slides, or fixed in 4% paraformaldehyde for paraffin sections and stained with H&E. The selected tissue sections were subjected to immunohistochemical staining using antibodies against GFP (1:200; Life Technologies, Carlsbad, CA, USA).

**Cell lines.** Gastric cancer cell lines, OCUM-2M (Yashiro *et al*, 1995), OCUM-2MD3 (Yashiro *et al*, 1996), OCUM-12 (Kato *et al*, 2010), KATO-III, and NUGC-3 (Nomura *et al*, 2001), derived from diffuse-type gastric carcinomas, and MKN-74 (Motoyama *et al*, 1986), derived from non-diffuse-type gastric carcinoma, were used. The culture medium consisted of DMEM (Wako, Osaka, Japan) with the addition of 10% fetal bovine serum (FBS; Nichirei, Tokyo, Japan), 100 IU ml<sup>-1</sup> penicillin (Wako), 100 mg ml<sup>-1</sup> streptomycin (Wako), and 0.5 mM sodium pyruvate (Wako). Cells were cultured at 37 °C in 21% O<sub>2</sub>.

**Isolation and culture of human BM-SCs.** Bone marrow-derived stromal cells were obtained from the iliac crest and plated in a dish with MesenCult-XF Medium (STEMCELL Technologies, Grenoble, France) according to a protocol approved by the Ethics

Committee of Osaka City University Graduate School of Medicine. Adherent layer with every 7 days in fresh medium was cultured until 70–80% confluence. Bone marrow-derived stromal cells were used between passages 3 and 5. This study was approved by the Ethics Committee of Osaka City University. Informed consent was obtained from patients before study.

**Clinical materials.** A total of 279 patients who had undergone a resection of the primary tumour and were confirmed histologically to have sporadic gastric cancer were enrolled in this study. None of the patients had undergone preoperative radiation or chemotherapy. The pathologic diagnoses and classifications were made according to the UICC TNM classification of malignant tumours. The study protocol conformed to the ethical guidelines of the Declaration of Helsinki. This study was approved by the Ethics Committee of Osaka City University. Written informed consent was obtained from all patients.

**Flow cytometry analysis.** To examine the proportion of CD271-positive cells in cultured BM-SCs, the single-cell suspensions were washed in 500  $\mu$ l PBS and resuspended in 100  $\mu$ l per 10<sup>6</sup> cells of PBS. The suspensions were stained with monoclonal CD271-FITC antibody (Miltenyi Biotec, Bergisch Gladbach, Germany) or anti-mouse IgG H&L Alexa Fluor 488 (Abcam, Cambridge, MA, USA) at 4 °C for 10 min. Stained cells were washed two times and resuspended in 500  $\mu$ l PBS. The percentage of positive cells were calculated and compared with isotype-matched control-stained cells. Flow cytometry analysis was performed on a FACScan (BD LSR II; Becton Dickinson, San Diego, CA, USA). Furthermore, to examine the detailed quantification of the proportion of infiltrated bone marrow-derived cells, the orthotopic tumour cell suspensions were stained with anti-CD271 antibody- (Abcam) labelled Alexa Fluor 647 by Alexa Fluor 647 Monoclonal Antibody Labelling Kit (Life Technologies), and anti-F4/80 antibody (FITC) (Abcam) and anti-human/mouse CD11b (PE) antibody (Tonbo Bioscience, Burlingame, CA, USA) at 4 °C for 10 min.

**Preparation of conditioned medium.** We prepared conditioned medium (CM) from gastric cancer cell lines and BM-SCs. To obtain CM, the plates with every cell were washed with PBS and then incubated for an additional 3 days in 3 ml DMEM without FBS. The supernatant was stored as CM at –80 °C until use. As a control, DMEM was used instead of CM.

**Proliferation assay.** The effect of CM from gastric cancer cells and BM-SCs on the proliferation of each other was determined by Cell Counting Kit-8 (CCK-8; Dojindo, Kumamoto, Japan) assay. A total of  $1 \times 10^3$  cancer cells or  $1 \times 10^4$  BM-SCs per well were seeded into two 96-well plates with CM or control. After incubation for 72 h, CCK-8 was added into each well. After incubation at 37 °C, the plate was measured as absorbance at 450 nm using a microtiter plate reader (PM2004; Wako). The percentage of cell viability was determined as the ratio of the absorbance of the sample vs the control. Three independent experiments were performed.

**Wound-healing assay.** Gastric cancer cells were cultured in 96-well plates (Essen ImageLock; Essen Instruments, Birmingham, UK). After the cells reached semiconfluence, a wound was created in the cell monolayer with the 96-well WoundMaker (Essen Bioscience, Ann Arbor, MI, USA). Cancer cells were cultured in DMEM with 5% FBS. Scratched fields were taken pictured every 3 h, and was monitored with Incucyte Live-Cell Imaging System and software (Essen Instruments). The degree of cell migrations were analysed 24 h after wound treatment as a percentage of wound confluence. The mean of six fields was calculated as the sample value.

**Invasion assay.** The *in vitro* invasiveness was measured by two-chamber Matrigel invasion assay using the chemotaxicell chambers (Millipore, Billerica, MA, USA) with a 12- $\mu$ m pore membrane filter

coated with 50  $\mu\text{g}$  of the Matrigel (upper chamber) in a 24-well culture plate (lower chamber), as reported previously (Yashiro *et al*, 1995). Gastric cancer cells ( $2 \times 10^4$  cells per 200  $\mu\text{l}$  per chamber) were seeded in the upper chamber, and 500  $\mu\text{l}$  of CM from BM-SCs or DMEM as control with 5% FBS was added to the lower chamber. After incubation for 24 h, cancer cells that invaded through a filter to the lower surface of the membrane were stained by the Diff-Quik (Sysmex, Kobe, Japan), and were manually counted under a microscope at  $\times 200$  magnification. Six randomly chosen fields were counted for each assay. The mean of six fields was calculated as the sample value.

**Immunohistochemical determination of CD271.** To stain the tissues of gastric cancer patients, anti-CD271 antibody (1:40; Abcam), Ki-67 antibody (MIB-1, ready-to use; Dako, Glostrup, Denmark), and anti-CD31 antibody (1:50; Abcam) were used. To stain the orthotopic tumour of athymic BALB/c nude mice, anti-mouse CD271 antibody (1:150; Abcam), anti- $\alpha$ -SMA antibody (1:100; Abcam), anti-F4/80 antibody (1:50; Abcam), and anti-mouse CD11b antibody (1:100; Tonbo Bioscience) were used. The methods used for the immunohistochemical determination are as per the manufacturer's instructions as reported previously (Kasashima *et al*, 2014). In this study, CD271 expression of gastric cancer tissues was evaluated by the intensity of staining and the percentage of stained stromal cells at the invading tumour front. It is possible to distinguish the cell types stained, as well as the number of cells and intensity of the immunohistochemical stained, by using the immunohistochemical technique. CD271 expression was evaluated by the intensity of staining and the percentage of stained stromal cells: intensity was given scores 0–2 (0 = no; 1 = weak to moderate; 2 = intense). The proportion of the CD271-positive cells (%) was calculated as  $100 \times \text{number of CD271-positive stromal cells} / \text{total stromal cells}$  and given scores 0–4 (0 = 0%, 1 = 1–19%, 2 = 20–49%, 3 = 50–69%, and 4 = 70–100%). The two scores were multiplied to obtain the final result of 0–8. Expressions were considered positive when scores were 4 or more and negative when scores were 3 or less. Ki-67 expressions were analysed by KI-67 index, the number of MIB-1-positive cancer cells in 100 cancer cells. CD31 expressions were analysed by the total length of CD31-positive cells under a microscope at  $\times 200$  magnification. Six randomly chosen fields were counted for each patients. The mean of six fields was calculated as the sample value. Evaluation was made by two double-blinded independent observers who were unaware of clinical data and outcome. When a discrepant evaluation between the two independent observers was found, the evaluation was rechecked and discussed.

**Immunofluorescence microscopy.** To examine the localisation of infiltrated GFP-positive bone marrow-derived cells and F4/80 expression in orthotopic tumour of nude mice, and CD271 expression and  $\alpha$ -SMA expression in the stroma of gastric cancer, immunofluorescence microscopy was performed. The frozen sections or paraffin-blocked tissues were blocked with 3% BSA (diluted in PBS) for 30 min at room temperature. Orthotopic tumour was incubated with anti-F4/80 antibody (1:100; Abcam) for 2 h at room temperature and secondary antibody incubation (Alexa Fluor 647; 1:200; Abcam) was performed for 2 h at room temperature. Tissues were further incubated with anti- $\alpha$ -SMA antibody (FITC)- (1:150; Abcam) and anti-CD271 antibody- (1:100; Abcam) labelled Alexa Fluor 647 by Alexa Fluor 647 Monoclonal Antibody Labelling Kit (Life Technologies) for 2 h at room temperature and DAPI (Wako; 1:1000) for 30 min at room temperature. Tissues were viewed under a fluorescence microscope (Leica Digital Microscopy DMI 6000; Leica Microsystems, Heidelberg, Germany).

**Statistical analysis.** The  $\chi^2$  test or Fisher's exact was used to determine the significance of differences between covariates. Survival durations were calculated with the Kaplan–Meier method and analysed by the log-rank test to compare cumulative survival durations among patient groups. In addition, the Cox proportional hazards model was used to compute univariate hazards ratios for the study parameters. In all of the tests,  $P < 0.05$  was defined as statistically significant. The SPSS software program (SPSS Japan, Tokyo, Japan) was used for the analyses. *In vitro*, data are expressed as mean  $\pm$  s.d. and significant difference was analysed using the unpaired Student's *t*-test.

## RESULTS

### BM-SCs infiltrate into the gastric tumour microenvironment.

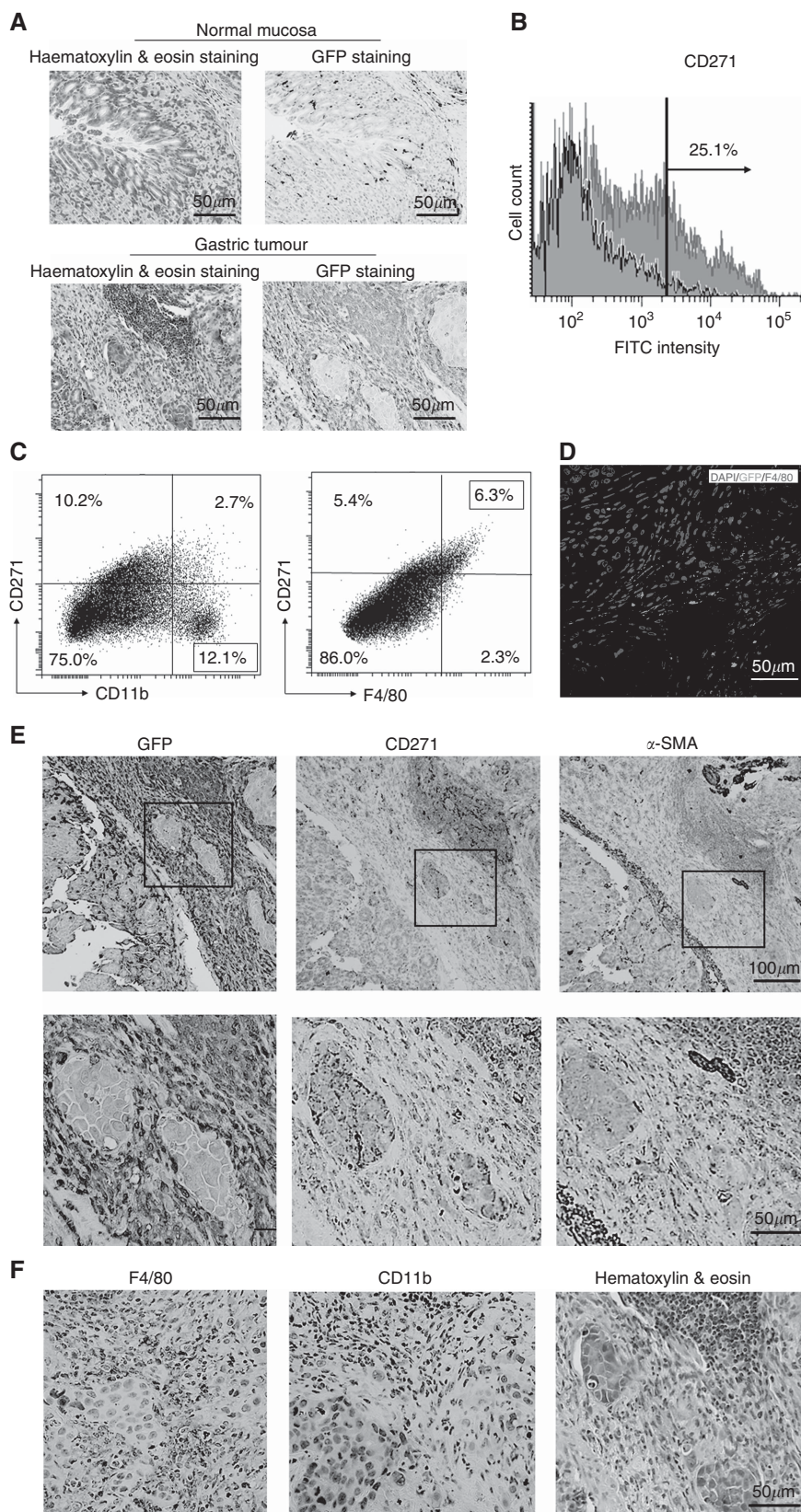
To clarify the contribution of bone marrow-derived cells, we examined the histopathological features of gastric tumours and the effects of inoculation of OCUM-2MLN cells into the gastric wall of nude mice transplanted with bone marrow from the CAG-EGFP mice. Tumours were allowed to grow for 6 weeks, after which the mice were killed and gastric tumours excised. Bone marrow of nude mice after transplantation of GFP bone marrow was used as the positive control of GFP-positive bone marrow-derived cells (Supplementary Figure 1).

Green fluorescent protein-positive bone marrow-derived cells were found in the stroma of gastric tumours. The number of bone marrow-derived cells was much greater in the stroma of gastric tumours compared with that in normal gastric tissue (Figure 1A). Immunofluorescence study was also performed and revealed that some GFP-positive bone marrow-derived cells were existing in the stroma of gastric tumours (Supplementary Figure 2).

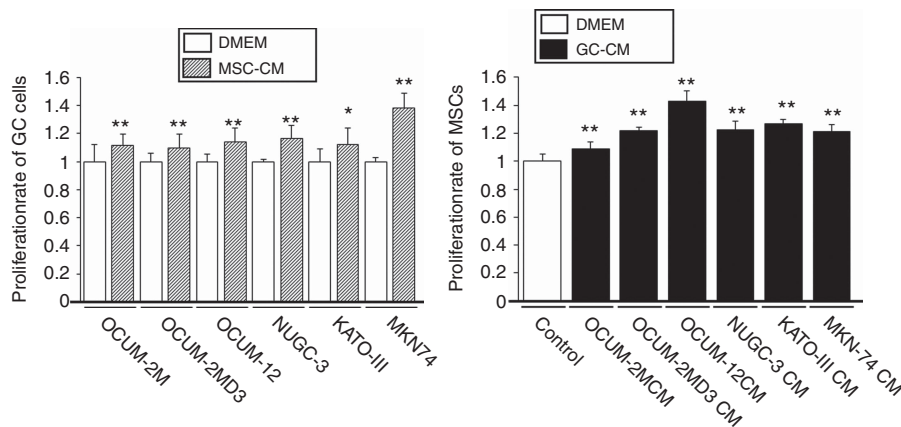
**CD271 expression in BM-SCs.** Flow cytometry was used to confirm that human BM-SCs express CD271. The CD271-positive population represented  $\sim 25\%$  of BM-SCs (Figure 1B). The mean fluorescence intensity of CD271 in BM-SCs (3210) was high compared with that of the isotype control (550). We examined the effect of conditioned media from gastric cancer cells on CD271 expression of BM-SCs by the FACScan analysis. The CM from OCUM-2MD3 did not affect the CD271-positive population of BM-SCs (data not shown). We examined the flow cytometry analysis to quantify the proportion of CD271-negative cell fractions using CD11b antibody and F4/80 antibody. CD11b-positive cells were frequently found in CD271-negative fraction. In contrast, F4/80 expression was correlated with CD271 expression (Figure 1C). About 12% of tumour cell suspensions were CD271-positive cells. To assess the fraction of CD271-negative cells, we used CD11b (a marker of many leukocytes including granulocytes, monocytes, macrophages, and natural killer cells) and F4/80 (a marker of mature macrophages). Although CD11b-positive cells did not have a correlation with CD271-positive cells, F4/80-positive cells had a correlation with CD271-positive cells (Figure 1C). Figure 1D showed that GFP-positive bone marrow derived, F4/80-positive macrophages were existed in the tumour stroma by immunofluorescence stainings. Subsequently, as shown in Figure 1E and F, immunohistochemical analysis using serial section was carried out to compare the localisation of GFP-positive bone marrow-derived cells with that of CD271,  $\alpha$ -SMA, F4/80, and CD11b-positive cells in the stroma of orthotopic tumour. The serial section showed that a number of GFP-positive cells were found to be positive for CD271,  $\alpha$ -SMA, and F4/80 but not for CD11b. These findings suggested that CD271-positive bone-marrow derived cells might partially differentiate to  $\alpha$ -SMA-positive myofibroblasts or F4/80-positive macrophages.

**Growth interaction between BM-SCs and gastric cancer cells.** Conditioned medium from BM-SCs significantly increased the





**Figure 1.** Bone marrow-derived cells. **(A)** Bone marrow-derived cells infiltrated the stroma of gastric tumours. Green fluorescent protein-positive bone marrow-derived cells were found in far greater numbers in the stroma of gastric tumours compared with that in normal gastric mucosa. **(B)** CD271 expression in BM-SCs. Approximately 25% of BM-SCs were positive for CD271 expression. **(C)** Examination of the proportion of infiltrated bone marrow-derived cells in whole tumour suspension. CD271-positive cells were correlated with F4/80-positive cells but not with CD11b-positive cells. **(D)** Immunofluorescence staining of tumour stroma. GFP and F4/80 double positive cells were found in the tumour. **(E and F)** Immunohistochemical analysis of the stroma of orthotopic tumour. A number of GFP-positive BM-SCs were positive for CD271,  $\alpha$ -SMA, and F4/80 but not for CD11b. A full colour version of this figure is available at the *BJC* journal online.



**Figure 2.** Relationship between BM-SCs and gastric cancer cell proliferation. Conditioned medium (CM) from BM-SCs significantly increased the proliferation of all gastric cancer cell lines compared with the control (Dulbecco's modified Eagle's medium (DMEM)). Conditioned medium from all gastric cancer cell lines significantly increased the number of BM-SCs compared with the control (DMEM).

proliferation of all gastric cancer cell lines, OCUM-2M, OCUM-2MD3, OCUM-12, NUGC-3, KATO-III, and MKN-74 by 11.7%, 9.5%, 13.8%, 16.3%, 11.9%, and 38.3%, respectively, compared with the control. Also, CM from all examined gastric cancer cell lines significantly increased the number of BM-SCs by 8.8%, 21.7%, 42.8%, 22.3%, 27.0%, and 21.5%, respectively, compared with the control (Figure 2).

**Effect of BM-SCs on the invasive abilities of gastric cancer cells.** Figure 3 shows a representative phase-contrast image of a wound-healing assay performed in this study. Representative images for the calculation of wound confluence are described. Pictures show initial wound mask at 0 h (yellow) and wound mask at 24 h (blue). Relative wound confluence (%) was calculated as  $100 \times$  wound closure area at each time-point (blue)/wound area at time 0 (yellow). The number of migrating OCUM-12 and NUGC-3 cells was significantly ( $P < 0.01$ ) increased by the CM from BM-SCs (Figure 3). Figure 3C provides a representative phase-contrast image of OCUM-12 and NUGC-3 cells that invaded into a  $12\text{-}\mu\text{m}$ -pore membrane filter. The number of invading OCUM-12 and NUGC-3 cells was significantly ( $P < 0.001$ ) increased by CM from BM-SCs (Figure 3D).

**Relationship between clinicopathological features of gastric cancer and CD271 expression in tumour stroma.** CD271-positive cells were observed in fibroblasts, vasculature cells, neural cells, and cancer cells, mainly tumour stromal fibroblasts. Human bone marrow was used as the positive controls of CD271 (Supplementary Figure 3). About one-third of cells in human bone marrow was positive for the staining of CD271 antibody. CD271 was expressed on the cell membrane of fibroblasts (Figure 4). The expression of CD271 in vasculature, neuronal, and cancer cells was excluded from this analysis. Table 1 shows the correlation between clinicopathological features and CD271 expression in stromal cells. Among the 279 gastric cancers examined, 159 cases (57%) were positive for CD271 expression in stromal cells. CD271 expression was significantly correlated with macroscopic type-4 cancers, diffuse-type tumours, and T invasion (T3–T4) but not age, gender, lymph node metastasis, lymphatic invasion, venous invasion, hepatic metastasis peritoneal metastasis, or peritoneal cytology.

Immunofluorescence analysis revealed that CD271 expressions in the stroma of gastric cancer were correlated with  $\alpha$ -SMA expressions (Supplementary Figure 4). These findings suggested that CD271-positive BM-SCs differentiate into myofibroblasts. In addition, expression levels of Ki-67 in cancer cells of CD271-positive patients were significantly higher compared with those of CD271-negative patients (Figure 4D). Furthermore, total length of

CD31-positive cells in the stroma of CD271-positive patients were significantly longer compared with those of CD271-negative patients (Figure 4E).

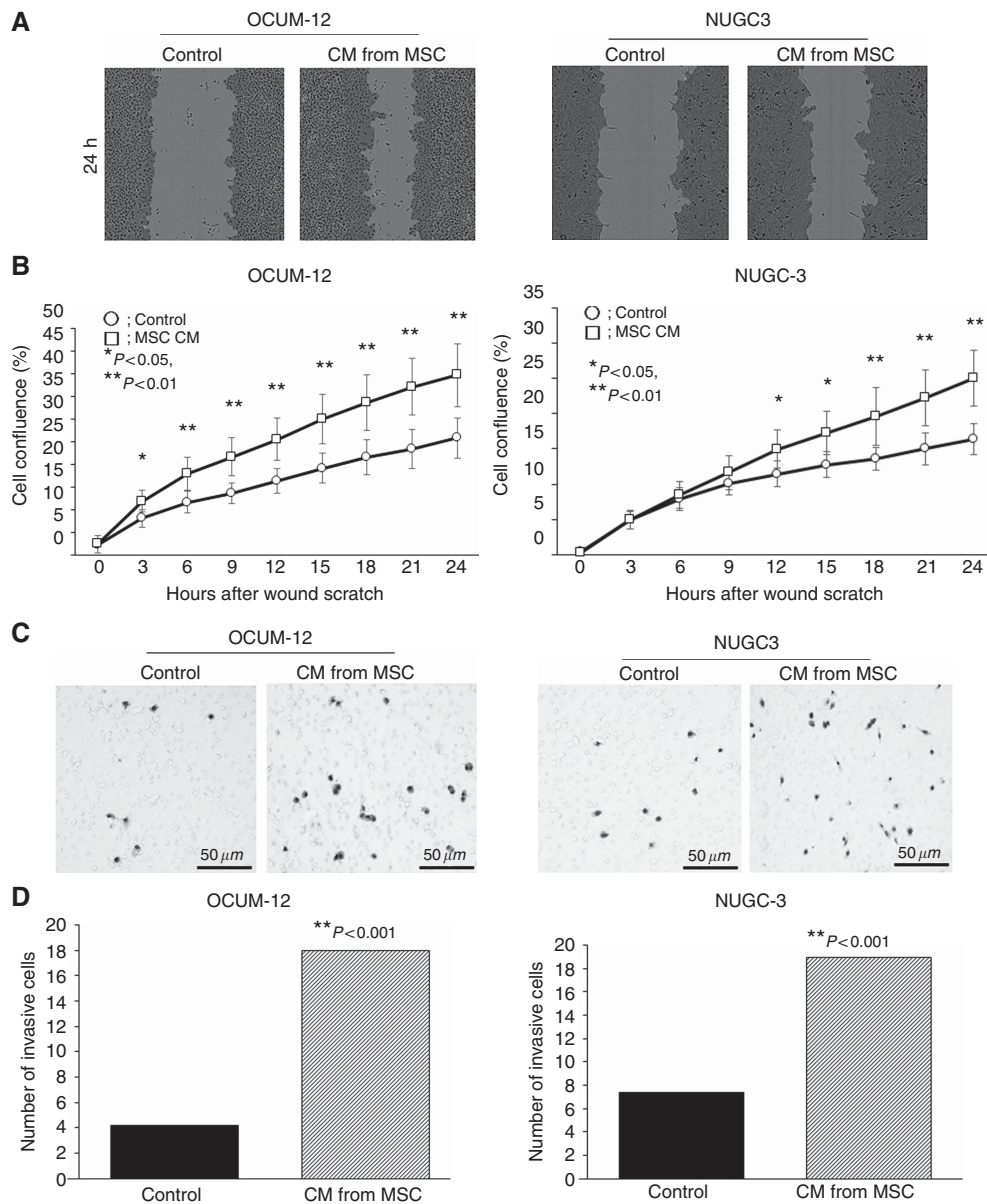
**Overall survival.** Figure 4 shows the overall survival of all patients ( $n = 279$ ), with CD271-positive stromal cells being correlated with significantly worse prognosis compared with CD271-negative stromal cells ( $P = 0.025$ ). Univariate analysis revealed that the overall survival of patients was significantly correlated with CD271 expression, macroscopic type-4 cancers, diffuse-type cancers, T invasion (T2–T4), lymph node metastasis, lymphatic invasion, venous invasion, infiltration, hepatic metastasis, peritoneal metastasis, and peritoneal cytology. Multivariate logistic regression analysis revealed that T invasion (T2–T4), lymph node metastasis, and peritoneal cytology, but not CD271 expression, were independent predictive parameters for the overall survival of patients (Table 2).

## DISCUSSION

This study showed that GFP-labelled bone marrow-derived cells were abundant in the tumour stroma of gastric cancer in an *in vivo* model. Houghton *et al* (2004) also demonstrated that bone marrow-derived cells are recruited to the tumour microenvironment in a mouse model. Flow cytometric analysis revealed that BM-SCs express CD271. These findings suggested that gastric tumour stroma might, in part, consist of CD271-positive BM-SCs. It has been reported that monocyte chemokine protein-1 (Dwyer *et al*, 2007) and stromal cell-derived factor-1 (Wobus *et al*, 2015) activate MSC migration to tumour site. These chemokines might be a candidate for the signals to recruit these CD271-positive bone marrow-derived cells.

We next analysed the role of BM-SCs in the development of gastric cancer. Bone marrow-derived stromal cells increased the proliferation and migration of gastric cancer cells, suggesting that BM-SCs might have an important role in the progression of gastric cancer. Terai *et al* (2014) reported that bone marrow-derived fibrocytes, established from peripheral blood mononuclear cells, were induced to differentiate into myofibroblasts and enhanced the tumour proliferation. In addition, several studies reported that MSCs are associated with the growth of some types of carcinomas (Karnoub *et al*, 2007; Suzuki *et al*, 2011; Tsai *et al*, 2011; De Boeck *et al*, 2013; Huang *et al*, 2013). Gastric cancer cells also increased the proliferative activity of BM-SCs in this study. The crosstalk between BM-SCs and gastric cancer cells might be closely associated with the development of gastric cancer. Furthermore,





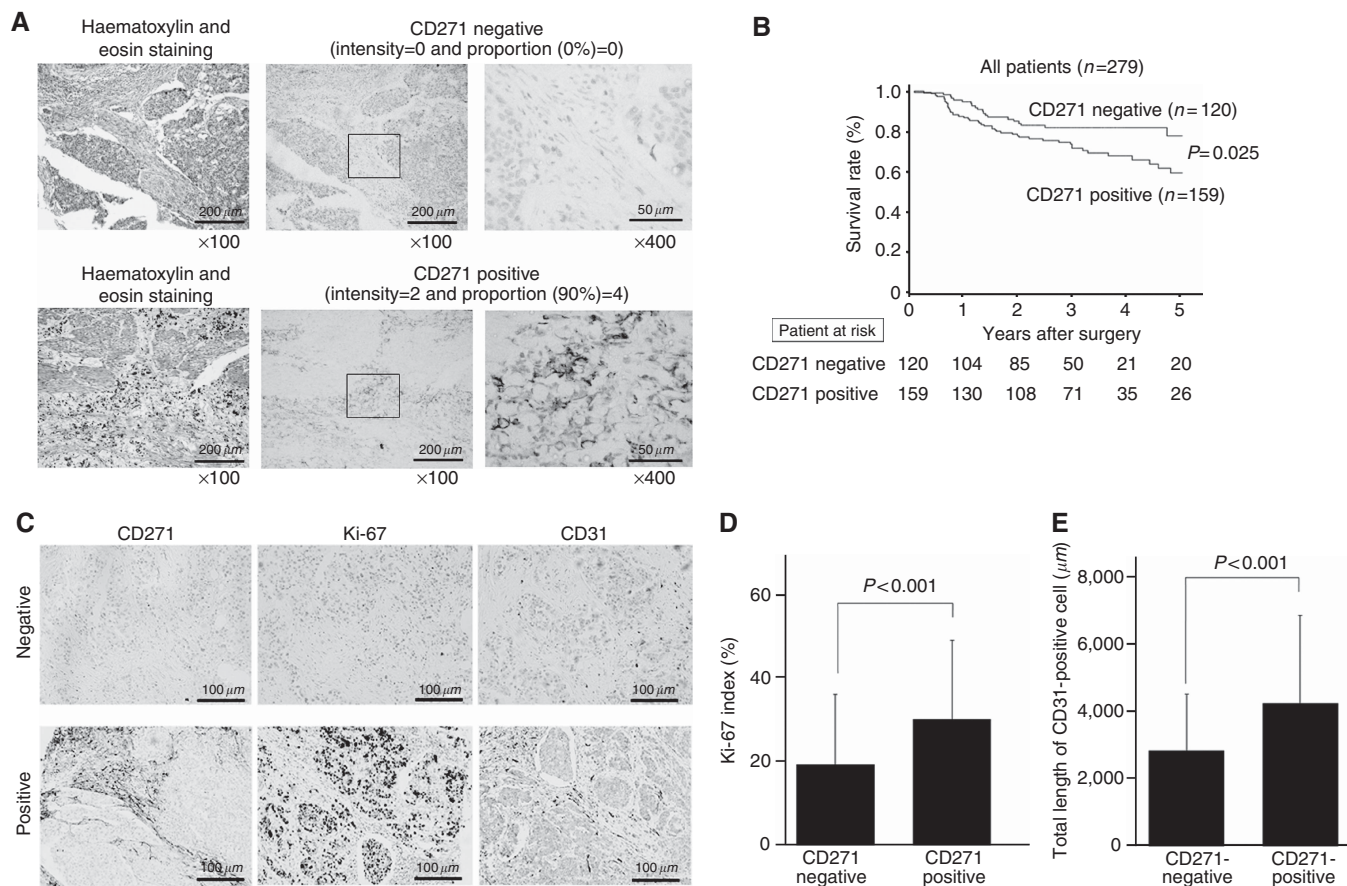
**Figure 3.** Effect of BM-SCs on the motility of gastric cancer cells. **(A)** Representative images of cell density in a wound-healing assay. The number of OCUM-12 and NUGC-3 cells migrating across the wound was increased by CM from BM-SCs compared with the control (the absence of CM from BM-SCs). Images show the initial wound mask at 0h (yellow) and at 24h (blue). Relative wound confluence (%) was calculated as  $100 \times$  wound closure area at each time-point (blue)/wound area at time 0 (yellow). **(B)** Effect of BM-SCs on the migration of cancer cells. Conditioned medium from BM-SCs significantly stimulated migration (round and square line) ( $P < 0.01$ ). **(C)** Representative images of invading OCUM-12 and NUGC3 cells. The number of cells invading the pore membrane filter was increased by CM from BM-SCs compared with the control. **(D)** Effect of BM-SCs on the invasion of cancer cells. Conditioned medium from BM-SCs significantly stimulated invasion ( $P < 0.001$ ). Data are presented as the mean and s.d. (error bars) of at least four experiments. A full colour version of this figure is available at the *BJC* journal online.

we examined the effect of BM-SCs on the tumorigenesis of gastric cancer cells *in vivo*. The tumour size by coinoculation of BM-SCs ( $5 \times 10^5$  cells) and OCUM-2MD3 ( $5 \times 10^6$  cells) were significantly greater compared with that of OCUM-2MD3 ( $5 \times 10^6$  cells) alone (data not shown). Also, it has been reported that BM-derived myofibroblasts become a major component of cancer-induced stromal cells in the later stage of tumour development (Ishii *et al*, 2003; Quante *et al*, 2011). Thus, BM-SCs might be a therapeutic target for cancer treatment, as reported previously (Serakinci *et al*, 2004).

Subsequently, we examined the correlation between CD271-positive stromal cells and clinicopathological features of gastric cancer patients by immunohistochemistry. In this study, CD271 expression of gastric cancer tissues was evaluated by the intensity

of staining and the percentage of stained stromal cells at the invading tumour front, whereas cancer cells also expressed CD271 as reported previously (Boiko *et al*, 2010; Imai *et al*, 2013).

CD271 expression in stromal cells was frequently found in 26 (93%) of 28 Borrmann type-4 gastric cancers that showed diffuse infiltrating carcinoma accompanied by extensive stromal fibroblasts (Japanese Gastric Cancer Association, 2011). We previously reported the close interactions between Borrmann type-4 gastric cancer cells and CAFs, especially myofibroblasts (Yashiro and Hirakawa, 2010; Fuyuhiko *et al*, 2012). In this study, we described the importance of fibroblasts, which migrated from the bone marrow. Also, we reported that gastric cancer cells regulate the characteristics of fibroblasts (Fuyuhiko *et al*, 2011), which might suggest that gastric cancer cells might regulate BM-SCs into



**Figure 4.** Expression of CD271 and survival of patients with gastric cancer. **(A)** CD271 was expressed on the membrane of fibroblasts in gastric cancer stroma. **(B)** Overall survival of all patients (n = 279) based on CD271 expression in stromal cells. The Kaplan–Meier survival curve indicates that the overall survival of patients with CD271-positive expression in stromal cells was significantly worse compared with that of patients with CD271-negative expression (P = 0.025). **(C)** Immunohistochemical analysis of CD271, Ki-67, and CD31. Ki-67 was expressed in the nucleus of cancer cells and CD271 and CD31 was mainly expressed on the membrane of stromal cells. **(D)** Ki-67 index of CD271-positive patients was significantly higher compared with that of CD271-negative patients (P < 0.001). **(E)** The length of CD31-positive cells in the stroma of CD271-positive patients were significantly greater compared with that of CD271-negative patients (P < 0.001).

cancer-associated gastric fibroblasts through the interaction between cancer cells and stromal cells in tumour microenvironment. Bone marrow-derived stromal cells in the gastric tumour might change to cancer-associated orthotopic myofibroblasts by the education of gastric cancer cells, and contribute to the tumour progression.

Cancer-associated fibroblasts in type-4 gastric cancer might originate from CD271-positive BM-SCs, and might be closely associated with tumour–stromal interactions in Borrmann type-4 gastric cancer. As described above, it has been suggested that CD271-positive bone marrow-derived cells differentiate to myofibroblasts or macrophages. We previously reported that fibroblast growth factor-7, transforming growth factor-β, and hepatocyte growth factor from CAFs, which contains myofibroblasts, stimulated the proliferation and invasion ability of gastric cancer cells (Inoue *et al*, 1997; Nakazawa *et al*, 2003). These factors from myofibroblasts might be associated with the proliferation and invasiveness of gastric cancer cells. CD271 expression in tumour stroma was positively associated with diffuse-type gastric cancer. It has been reported that CCL5 (Karnoub *et al*, 2007) and CXCL8 (Ringe *et al*, 2007) showed chemoattractant activity of BM-SCs. Bone marrow-derived stromal cells might be associated with tumour development of diffuse-type of gastric cancer. These cytokines from diffuse-type gastric cancer might be associated with the accumulation of CD271-positive BM-SCs. Because CD271

expression was frequently found at T stage 3 and 4, CD271-positive BM-SCs might have an active role at T stage 3 and 4. With regard to type after curative surgery in 229 patients, the number of peritoneal metastasis, local recurrence, lymph node recurrence, and hepatic metastasis is 12 (5.2%), 3 (1.3%), 21 (9.2%), and 16 (7.0%), respectively. Among these relapse types, the recurrence of peritoneal metastasis was significantly (P = 0.041) associated with CD271 expression (Supplementary Table 1).

In this study, Kaplan–Meier survival analysis revealed that CD271-positive patients had significantly (log-rank test, P < 0.025) poorer prognosis compared with CD271-negative patients. In contrast, the multivariate Cox analysis showed that T invasion was an independent prognostic factor, but CD271 was not. As CD271 expression was correlated with T stage, CD271 expression might not be an independent prognostic factor.

To determine the tumour proliferative ability and angiogenic index, IHC was performed using anti-MIB-1 antibody and anti-CD31 antibody, respectively. Ki-67 index and the tumour proliferative ability of gastric cancer in CD271-positive patients were significantly higher compared with that in CD271-negative patients (Figure 4D). The angiogenic index was analysed by the total length of CD31-positive cells under a microscope at × 200 magnification. Total length of CD31-positive cells in the stroma of CD271-positive patients were significantly longer compared with those of CD271-negative patients (Figure 4E). These findings

**Table 1. Correlation between CD271 expression and clinicopathological features in 279 patients with gastric carcinoma**

Clinicopathological features	CD271 expression		P-value
	Positive (n = 159)	Negative (n = 120)	
<b>Age (years)</b>			
< 60	49 (78%)	27 (22%)	0.136
≥ 60	110 (52%)	93 (48%)	
<b>Gender</b>			
Female	100 (62%)	62 (38%)	0.067
Male	59 (50%)	58 (50%)	
<b>Macroscopic type</b>			
Other type	133 (53%)	118 (47%)	<0.001
Type-4	26 (93%)	2 (7%)	
<b>Histological type</b>			
Intestinal type	57 (46%)	68 (54%)	0.001
Diffuse type	102 (66%)	52 (34%)	
<b>T invasion</b>			
T1, T2	82 (51%)	78 (49%)	0.028
T3, T4	77 (65%)	42 (35%)	
<b>Lymph node metastasis</b>			
Negative	85 (55%)	69 (45%)	0.544
Positive	74 (59%)	51 (41%)	
<b>Lymphatic invasion</b>			
Negative	67 (57%)	51 (43%)	1.000
Positive	92 (57%)	69 (43%)	
<b>Venous invasion</b>			
Negative	126 (58%)	93 (42%)	0.769
Positive	33 (55%)	27 (45%)	
<b>Infiltration</b>			
a, b	93 (49%)	97 (51%)	<0.001
c	58 (79%)	15 (21%)	
<b>Hepatic metastasis</b>			
Negative	154 (57%)	116 (43%)	1.000
Positive	5 (56%)	4 (44%)	
<b>Peritoneal metastasis</b>			
Negative	146 (56%)	116 (44%)	0.129
Positive	13 (76%)	4 (24%)	
<b>Peritoneal cytology</b>			
Negative	129 (56%)	101 (44%)	0.217
Positive	18 (69%)	8 (31%)	

suggested that CD271-positive stromal cells might be associated with the proliferative ability of gastric cancer cells and angiogenesis but not invasion. CD271 expression did not correlate with lymph node metastasis, lymphatic invasion, venous invasion, hepatic metastasis, and peritoneal metastasis. In addition, flow cytometric analysis (Figure 1C) showed that CD271-negative cells contain CD11b-positive cells that are designated as immune cells, such as natural killer cells. These immune cells might correlate with better prognosis of 'CD271-negative' gastric cancer cases.

Although CD271 is reported as a marker of MSCs (Quirici *et al*, 2002; Das *et al*, 2013; Rasini *et al*, 2013; Watson *et al*, 2013), especially BM-MSCs (Jones *et al*, 2008; Noort *et al*, 2012), there is no report of the significance of BM-SCs in gastric cancer patients. Thus, this is the first report to describe the significance of BM-SCs in the tumour microenvironment in gastric cancer progression. In future study, it is necessary to detect and quantify circulating CD271-positive cells in the gastric cancer patients to compare their presence with disease progression or clinical remission.

**Table 2. Univariate and multivariate Cox multiple regression analysis with respect to overall survival after surgery in 279 patients with gastric carcinoma**

Parameter	Univariate			Multivariate		
	Hazard ratio	95% CI	P-value	Hazard ratio	95% CI	P-value
<b>CD271 expression</b>						
Positive	1.818	1.079–3.065	0.025	1.414	0.762–2.622	0.272
<b>Macroscopic type</b>						
Type-4	5.866	3.496–9.842	<0.001	1.217	0.628–0.362	0.561
<b>Histological type</b>						
Diffuse type	1.988	1.204–3.284	0.007	1.368	0.727–2.573	0.331
<b>T invasion</b>						
T2–T4	19.815	7.220–54.380	<0.001	6.833	1.922–24.290	0.003
<b>Lymph node metastasis</b>						
Positive	11.152	5.701–21.815	<0.001	4.175	1.779–9.798	0.001
<b>Lymphatic invasion</b>						
Positive	8.150	3.902–17.019	<0.001	0.875	0.349–2.196	0.777
<b>Venous invasion</b>						
Positive	3.811	2.373–6.122	<0.001	1.449	0.828–2.535	0.194
<b>Infiltration type c</b>						
Positive	1.836	1.132–2.976	0.014	0.680	0.351–1.316	0.252
<b>Hepatic metastasis</b>						
Positive	5.906	2.679–13.023	<0.001	2.448	0.986–6.077	0.054
<b>Peritoneal metastasis</b>						
Positive	10.593	5.725–19.600	<0.001	1.733	0.755–3.974	0.194
<b>Peritoneal cytology</b>						
Positive	11.030	6.213–19.580	<0.001	3.544	1.653–7.595	0.001

Abbreviation: CI = confidence interval.

In conclusion, BM-SCs might have an important role in the progression of gastric cancer. CD271-positive BM-SCs might be a useful prognostic factor for patients with gastric cancer.

## ACKNOWLEDGEMENTS

This study is partially funded by KAKENHI (Grant-in-Aid for Scientific Research, Nos. 22390262, 23390329, and 26293307), by the National Cancer Center Research and Development Fund (23-A-9), and by Priority Research Fund of Osaka City University.

## CONFLICT OF INTEREST

The authors declare no conflict of interest.

## REFERENCES

- Bergfeld SA, DeClerck YA (2010) Bone marrow-derived mesenchymal stem cells and the tumor microenvironment. *Cancer Metast Rev* **29**(2): 249–261.
- Boiko AD, Razorenova OV, van de Rijn M, Swetter SM, Johnson DL, Ly DP, Butler PD, Yang GP, Joshua B, Kaplan MJ, Longaker MT, Weissman IL (2010) Human melanoma-initiating cells express neural crest nerve growth factor receptor CD271. *Nature* **466**(7302): 133–137.
- Boxall SA, Jones E (2012) Markers for characterization of bone marrow multipotential stromal cells. *Stem Cells Int* **2012**: 975871.
- Buhring HJ, Tremml S, Cerabona F, de Zwart P, Kanz L, Sobiesiak M (2009) Phenotypic characterization of distinct human bone marrow-derived MSC subsets. *Ann NY Acad Sci* **1176**: 124–134.



- Caiado F, Carvalho T, Rosa I, Remedio L, Costa A, Matos J, Heissig B, Yagita H, Hattori K, da Silva JP, Fidalgo P, Pereira AD, Dias S (2013) Bone marrow-derived CD11b+ Jagged2+ cells promote epithelial-to-mesenchymal transition and metastasization in colorectal cancer. *Cancer Res* **73**(14): 4233–4246.
- Das B, Kashino SS, Pulu I, Kalita D, Swami V, Yeger H, Felsher DW, Campos-Neto A (2013) CD271(+) bone marrow mesenchymal stem cells may provide a niche for dormant *Mycobacterium tuberculosis*. *Sci Transl Med* **5**(170): 170ra13.
- De Boeck A, Pauwels P, Hensen K, Rummens JL, Westbroek W, Hendrix A, Maynard D, Denys H, Lambein K, Braems G, Gespach C, Bracke M, De Wever O (2013) Bone marrow-derived mesenchymal stem cells promote colorectal cancer progression through paracrine neuregulin 1/HER3 signalling. *Gut* **62**(4): 550–560.
- Dwyer RM, Potter-Beirne SM, Harrington KA, Lowery AJ, Hennessy E, Murphy JM, Barry FP, O'Brien T, Kerin MJ (2007) Monocyte chemotactic protein-1 secreted by primary breast tumors stimulates migration of mesenchymal stem cells. *Clin Cancer Res* **13**(17): 5020–5027.
- Fujihara T, Sawada T, Hirakawa K, Chung YS, Yashiro M, Inoue T, Sowa M (1998) Establishment of lymph node metastatic model for human gastric cancer in nude mice and analysis of factors associated with metastasis. *Clin Exp Metastasis* **16**(4): 389–398.
- Fuyuhiko Y, Yashiro M, Noda S, Kashiwagi S, Matsuoka J, Doi Y, Kato Y, Hasegawa T, Sawada T, Hirakawa K (2011) Upregulation of cancer-associated myofibroblasts by TGF-beta from scirrhous gastric carcinoma cells. *Br J Cancer* **105**(7): 996–1001.
- Fuyuhiko Y, Yashiro M, Noda S, Kashiwagi S, Matsuoka J, Doi Y, Kato Y, Muguruma K, Sawada T, Hirakawa K (2010) Myofibroblasts are associated with the progression of scirrhous gastric carcinoma. *Exp Ther Med* **1**(4): 547–551.
- Fuyuhiko Y, Yashiro M, Noda S, Matsuoka J, Hasegawa T, Kato Y, Sawada T, Hirakawa K (2012) Cancer-associated orthotopic myofibroblasts stimulates the motility of gastric carcinoma cells. *Cancer Sci* **103**(4): 797–805.
- Harper J, Sainson RC (2014) Regulation of the anti-tumour immune response by cancer-associated fibroblasts. *Semin Cancer Biol* **25**: 69–77.
- Houghton J, Stoicov C, Nomura S, Rogers AB, Carlson J, Li H, Cai X, Fox JG, Goldenring JR, Wang TC (2004) Gastric cancer originating from bone marrow-derived cells. *Science* **306**(5701): 1568–1571.
- Huang L, Xu A, Liu S, Liu W, Li T (2014) Cancer-associated fibroblasts in digestive tumors. *World J Gastroenterol* **20**(47): 17804–17818.
- Huang WH, Chang MC, Tsai KS, Hung MC, Chen HL, Hung SC (2013) Mesenchymal stem cells promote growth and angiogenesis of tumors in mice. *Oncogene* **32**(37): 4343–4354.
- Imai T, Tamai K, Oizumi S, Oyama K, Yamaguchi K, Sato I, Satoh K, Matsuura K, Saijo S, Sugamura K, Tanaka N (2013) CD271 defines a stem cell-like population in hypopharyngeal cancer. *PLoS One* **8**(4): e62002.
- Inoue T, Chung YS, Yashiro M, Nishimura S, Hasuma T, Otani S, Sowa M (1997) Transforming growth factor-beta and hepatocyte growth factor produced by gastric fibroblasts stimulate the invasiveness of scirrhous gastric cancer cells. *Jpn J Cancer Res* **88**(2): 152–159.
- Ishii G, Sangai T, Oda T, Aoyagi Y, Hasebe T, Kanomata N, Endoh Y, Okumura C, Okuhara Y, Magae J, Emura M, Ochiya T, Ochiai A (2003) Bone-marrow-derived myofibroblasts contribute to the cancer-induced stromal reaction. *Biochem Biophys Res Commun* **309**(1): 232–240.
- Japanese Gastric Cancer Association (2011) Japanese classification of gastric carcinoma: 3rd English edition. *Gastric Cancer* **14**(2): 101–112.
- Jones EA, Crawford A, English A, Henshaw K, Mundy J, Corscadden D, Chapman T, Emery P, Hatton P, McGonagle D (2008) Synovial fluid mesenchymal stem cells in health and early osteoarthritis: detection and functional evaluation at the single-cell level. *Arthritis Rheum* **58**(6): 1731–1740.
- Kalluri R, Zeisberg M (2006) Fibroblasts in cancer. *Nat Rev Cancer* **6**(5): 392–401.
- Karnoub AE, Dash AB, Vo AP, Sullivan A, Brooks MW, Bell GW, Richardson AL, Polyak K, Tubo R, Weinberg RA (2007) Mesenchymal stem cells within tumour stroma promote breast cancer metastasis. *Nature* **449**(7162): 557–563.
- Kasashima H, Yashiro M, Kinoshita H, Fukuoka T, Morisaki T, Masuda G, Sakurai K, Kubo N, Ohira M, Hirakawa K (2014) Lysyl oxidase-like 2 (LOXL2) from stromal fibroblasts stimulates the progression of gastric cancer. *Cancer Lett* **354**(2): 438–446.
- Kato Y, Yashiro M, Noda S, Tendo M, Kashiwagi S, Doi Y, Nishii T, Matsuoka J, Fuyuhiko Y, Shinto O, Sawada T, Ohira M, Hirakawa K (2010) Establishment and characterization of a new hypoxia-resistant cancer cell line, OCUM-12/Hypo, derived from a scirrhous gastric carcinoma. *Br J Cancer* **102**(5): 898–907.
- Motoyama T, Hojo H, Watanabe H (1986) Comparison of seven cell lines derived from human gastric carcinomas. *Acta Pathol Jpn* **36**(1): 65–83.
- Mueller L, Goumas FA, Affeldt M, Sandtner S, Gehling UM, Brillhoff S, Walter J, Karnatz N, Lamszus K, Rogiers X, Broering DC (2007) Stromal fibroblasts in colorectal liver metastases originate from resident fibroblasts and generate an inflammatory microenvironment. *Am J Pathol* **171**(5): 1608–1618.
- Nakazawa K, Yashiro M, Hirakawa K (2003) Keratinocyte growth factor produced by gastric fibroblasts specifically stimulates proliferation of cancer cells from scirrhous gastric carcinoma. *Cancer Res* **63**(24): 8848–8852.
- Nomura H, Nishimori H, Yasoshima T, Hata F, Sogahata K, Tanaka H, Nakajima F, Ikeda S, Kamiguchi K, Isomura H, Sato N, Denno R, Hirata K (2001) A novel experimental mouse model of peritoneal dissemination of human gastric cancer cells: analysis of the mechanism of peritoneal dissemination using cDNA macroarrays. *Jpn J Cancer Res* **92**(7): 748–754.
- Noort WA, Oerlemans MI, Rozemuller H, Feyen D, Jaksani S, Stecher D, Naaijkens B, Martens AC, Buhning HJ, Doevendans PA, Sluijter JP (2012) Human versus porcine mesenchymal stromal cells: phenotype, differentiation potential, immunomodulation and cardiac improvement after transplantation. *J Cell Mol Med* **16**(8): 1827–1839.
- Quante M, Tu SP, Tomita H, Gonda T, Wang SS, Takashi S, Baik GH, Shibata W, Diprete B, Betz KS, Friedman R, Varro A, Tycko B, Wang TC (2011) Bone marrow-derived myofibroblasts contribute to the mesenchymal stem cell niche and promote tumor growth. *Cancer Cell* **19**(2): 257–272.
- Quirici N, Soligo D, Bossolasco P, Servida F, Lumini C, Delicieri GL (2002) Isolation of bone marrow mesenchymal stem cells by anti-nerve growth factor receptor antibodies. *Exp Hematol* **30**(7): 783–791.
- Rasini V, Dominici M, Kluba T, Siegel R, Lusenti G, Northoff H, Horwitz EM, Schafer R (2013) Mesenchymal stromal/stem cells markers in the human bone marrow. *Cytotherapy* **15**(3): 292–306.
- Ringe J, Strassburg S, Neumann K, Endres M, Notter M, Burmester GR, Kaps C, Sittinger M (2007) Towards *in situ* tissue repair: human mesenchymal stem cells express chemokine receptors CXCR1, CXCR2 and CCR2, and migrate upon stimulation with CXCL8 but not CCL2. *J Cell Biochem* **101**(1): 135–146.
- Ronnov-Jessen L, Petersen OW, Koteliensky VE, Bissell MJ (1995) The origin of the myofibroblasts in breast cancer. Recapitulation of tumor environment in culture unravels diversity and implicates converted fibroblasts and recruited smooth muscle cells. *J Clin Invest* **95**(2): 859–873.
- Serakinci N, Guldborg P, Burns JS, Abdallah B, Schrodder H, Jensen T, Kassem M (2004) Adult human mesenchymal stem cell as a target for neoplastic transformation. *Oncogene* **23**(29): 5095–5098.
- Shinagawa K, Kitadai Y, Tanaka M, Sumida T, Kodama M, Higashi Y, Tanaka S, Yasui W, Chayama K (2010) Mesenchymal stem cells enhance growth and metastasis of colon cancer. *Int J Cancer* **127**(10): 2323–2333.
- Suzuki K, Sun R, Origuchi M, Kanehira M, Takahata T, Itoh J, Umezawa A, Kijima H, Fukuda S, Saijo Y (2011) Mesenchymal stromal cells promote tumor growth through the enhancement of neovascularization. *Mol Med* **17**(7–8): 579–587.
- Terai S, Fushida S, Tsukada T, Kinoshita J, Oyama K, Okamoto K, Makino I, Tajima H, Ninomiya I, Fujimura T, Harada S, Ohta T (2014) Bone marrow derived 'fibrocytes' contribute to tumor proliferation and fibrosis in gastric cancer. *Gastric Cancer* **18**(2): 306–313.
- Tripathi M, Billet S, Bhowmick NA (2012) Understanding the role of stromal fibroblasts in cancer progression. *Cell Adhes Migr* **6**(3): 231–235.
- Tsai KS, Yang SH, Lei YP, Tsai CC, Chen HW, Hsu CY, Chen LL, Wang HW, Miller SA, Chiou SH, Hung MC, Hung SC (2011) Mesenchymal stem cells

- promote formation of colorectal tumors in mice. *Gastroenterology* **141**(3): 1046–1056.
- Watson JT, Foo T, Wu J, Moed BR, Thorpe M, Schon L, Zhang Z (2013) CD271 as a marker for mesenchymal stem cells in bone marrow versus umbilical cord blood. *Cells Tissues Organs* **197**(6): 496–504.
- Wobus M, List C, Dittrich T, Dhawan A, Duryagina R, Arabanian LS, Kast K, Wimberger P, Stiehler M, Hofbauer LC, Jakob F, Ehninger G, Anastasiadis K, Bornhauser M (2015) Breast carcinoma cells modulate the chemoattractive activity of human bone marrow-derived mesenchymal stromal cells by interfering with CXCL12. *Int J Cancer* **136**(1): 44–54.
- Yashiro M, Chung YS, Nishimura S, Inoue T, Sowa M (1995) Establishment of two new scirrhous gastric cancer cell lines: analysis of factors associated with disseminated metastasis. *Br J Cancer* **72**(5): 1200–1210.
- Yashiro M, Chung YS, Nishimura S, Inoue T, Sowa M (1996) Peritoneal metastatic model for human scirrhous gastric carcinoma in nude mice. *Clin Exp Metastasis* **14**(1): 43–54.
- Yashiro M, Hirakawa K (2010) Cancer-stromal interactions in scirrhous gastric carcinoma. *Cancer Microenviron* **3**(1): 127–135.
- Zeisberg EM, Potenta S, Xie L, Zeisberg M, Kalluri R (2007) Discovery of endothelial to mesenchymal transition as a source for carcinoma-associated fibroblasts. *Cancer Res* **67**(21): 10123–10128.

This work is published under the standard license to publish agreement. After 12 months the work will become freely available and the license terms will switch to a Creative Commons Attribution-NonCommercial-Share Alike 4.0 Unported License

Supplementary Information accompanies this paper on British Journal of Cancer website (<http://www.nature.com/bjc>)