

ARTICLE

Identification of a novel nonsense variant c.1332dup, p.(D445*) in the *LDLR* gene that causes familial hypercholesterolemia

Faisal A Al-Allaf^{1,2,3,6}, Mohammad Athar^{1,2,6}, Zainularifeen Abduljaleel^{1,2}, Abdellatif Bouazzaoui^{1,2}, Mohiuddin M Taher^{1,2}, Rakan Own¹, Ahmad F Al-Allaf⁴, Iman AbuMansour¹, Zohor Azhar¹, Faisal A Ba-hammam¹, Hala Abalkhail⁵ and Abdullah Alashwal⁵

Familial hypercholesterolemia (FH) is an autosomal dominant disease predominantly caused by a mutation in the low-density lipoprotein receptor (*LDLR*) gene. Here, we describe two severely affected FH patients who were resistant to statin therapy and were managed on an apheresis program. We identified a novel duplication variant c.1332dup, p.(D445*) at exon 9 and a known silent variant c.1413A > G, p.(=), rs5930, NM_001195798.1 at exon 10 of the *LDLR* gene in both patients.

Human Genome Variation (2014) 1, 14021; doi:10.1038/hgv.2014.21; published online 20 November 2014

INTRODUCTION

Familial hypercholesterolemia (FH) is an autosomal dominant disorder that predisposes the patient to the development of coronary artery disease and sudden cardiac death. FH is generally caused by mutations in the low-density lipoprotein receptor (*LDLR*) gene, leading to reduced hepatic clearance of LDL from the blood. FH can also be caused by mutations in the apolipoprotein B (*APOB*) gene, which encodes the LDLR ligand. In addition, a pathogenic mutation in the proprotein convertase subtilisin/kexin type 9 (*PCSK9*) gene has been proposed to cause FH, indicating that the disease is genetically heterogeneous.^{1–3} Several studies have demonstrated that mutations in the *LDLR*, *APOB* or *PCSK9* genes can result in hypercholesterolemia.

The *LDLR* gene consists of 18 exons spanning 45 kb and encodes an 860-amino-acid precursor protein.⁴ In the majority of populations, the frequency of heterozygosity is less than 1:500, whereas the homozygous form is rare, occurring at a frequency of 1:1,000,000.⁵ Worldwide, there are more than 1,288 reported genetic variants in *LDLR*.^{6–8} The highest frequency of heterozygosity is observed in the South African population, with an incidence of less than 1:80.⁹ Other studies in the French-Canadian population found five common variants with a frequency of 1:270.^{4,10} This high frequency is attributed to the founder effect and consanguineous marriages.

Before this research, a genetic epidemiological study of the frequency of FH in the Saudi population had not been conducted. We expect the incidence of FH, secondary to the homozygous genotype in Saudi Arabia, to be relatively high, because of the increased rate of consanguineous marriages (over 54%). Consequently, many cardiovascular centers have been established across the country to provide adequate care and treatment for patients with heart diseases.¹¹ The estimated number of affected heterozygote Saudi individuals ranges from 46,000 to 230,000 individuals. The majority of affected individuals may not be aware of the disease, as they remain asymptomatic until a severe myocardial infarction occurs, usually after the age of 40 years. The

myocardial infarctions can be severe enough to cause sudden cardiac death or disabling cardiovascular morbidities. For the clinical diagnosis of FH, there are three sets of criteria used: the Simon Broome Register (UK), the Dutch Lipid Clinic Network (the Netherlands) and the MEDPED Program (USA). These criteria have been proven to identify FH in patients. The criteria are primarily based on age, blood cholesterol levels and evidence of clinical signs related to FH (xanthelasma, tendinous xanthomata and corneal arcus) and a family history of coronary heart disease (CHD). However, elevated blood cholesterol levels are commonly observed in individuals with nongenetic multifactorial hypercholesterolemia, which may lead to a misdiagnosis of FH in those individuals. Therefore, the use of molecular methods to characterize gene defects is necessary for an unequivocal FH diagnosis. Furthermore, when novel variants are identified, distinguishing between pathogenic variants and polymorphs is crucial for molecular confirmation. Further investigation into the pathogenicity of novel variants can be performed by standard functional analyses or by using new alternative bioinformatics methods to predict the putative effects of variants on protein function and stability.¹²

MATERIALS AND METHODS

Subjects

The analysis was performed in two patients diagnosed with homozygous FH. The patients are siblings whose family originates from a tribe that lives in the northern region of Saudi Arabia. Both patients are resistant to statin therapy and were on an apheresis program. Sample collection and studies were performed in accordance with the Research Ethics Committee's regulation after the subjects were provided with informed consent. The enrollment criteria for the genetic screening of the patients were based on the Simon Broome register.¹³

DNA analysis

Genomic DNA was isolated from EDTA-treated whole blood using the MagNA Pure Compact Nucleic Acid Isolation Kit I (Roche, Basel, Switzerland) according to the manufacturer's instructions. Polymerase chain

¹Department of Medical Genetics, Faculty of Medicine, Umm Al-Qura University, Makkah, Saudi Arabia; ²Science and Technology Unit, Umm Al-Qura University, Makkah, Saudi Arabia; ³Molecular Diagnostics Unit, Department of Laboratory and Blood Bank, King Abdullah Medical City, Makkah, Saudi Arabia; ⁴College of Medicine, Alfaisal University, Riyadh, Saudi Arabia and ⁵Department of Pediatrics, King Faisal Specialist Hospital and Research Centre, Riyadh, Saudi Arabia.

Correspondence: FA Al-Allaf (fallaf@uqu.edu.sa) or A Alashwal (alashwal@kfshrc.edu.sa)

⁶These authors contributed equally to this work.

Received 6 July 2014; revised 28 August 2014; accepted 28 August 2014

reaction (PCR) amplification of the *LDLR* gene (including the 18 coding exons and flanking intron regions), *APOB* gene (exon 26 of the *APOB* gene containing codons 3,475–3,592, which harbors three known pathogenic

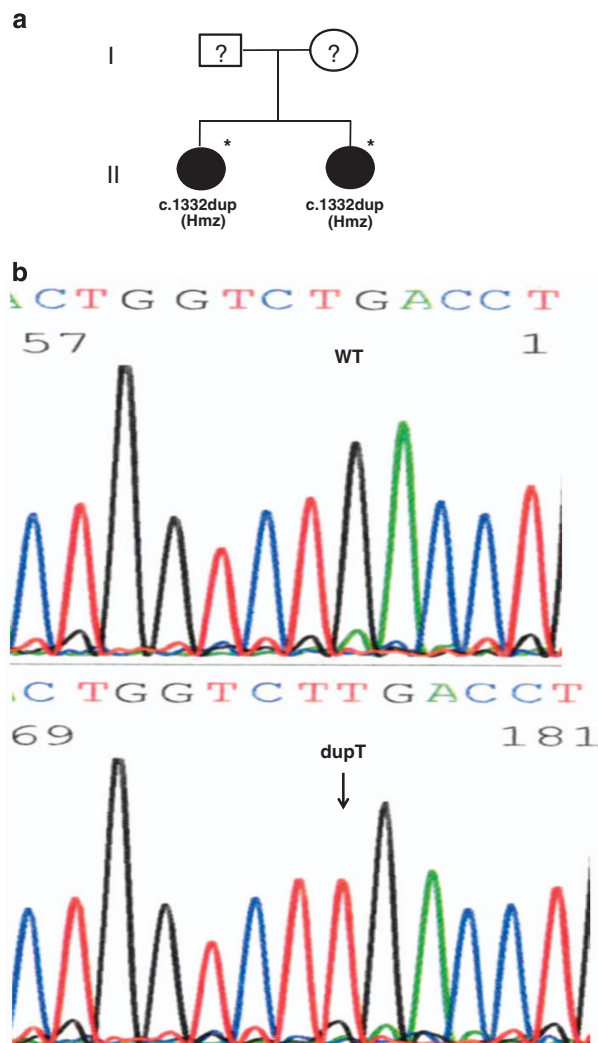


Figure 1. Novel nonsense variant p.(D445*) identified at exon 9 of the *LDLR* gene. (a) Pedigree of the patient family. (b) Representative DNA sequence from the control individuals (wild type; WT) and patients. ? = NOT available for DNA analysis. * = Index case.

variant sites, R3500Q, R3500W and R3527Q) and the *PCSK9* gene (the 12 exons and flanking intron regions) were performed. Descriptions of the primers used for amplifying and sequencing the fragments are provided in Supplementary Table 1. PCR was performed with 100 ng genomic DNA using the HotStarTaq Plus DNA Polymerase Kit (Qiagen, Hilden, Germany) as follows: *Taq* polymerase was activated at 94 °C for 5 min, followed by 35 cycles of denaturing at 94 °C for 30 s, annealing at 61–64 °C (Supplementary Table 1) for 30 s, extension at 72 °C for 45 s and final extension at 72 °C for 5 min. The amplified products were separated on an agarose gel to ensure the size and quality of the band. The PCR products were purified using magnetic beads with the Agencourt AMPure XP kit (Beckman Coulter, Brea, CA, USA). The purified products were used as templates for direct reaction sequencing with a BigDye Terminator v3.1 cycle sequencing ready reaction kit (Applied Biosystems, Foster City, CA, USA). The sequencing reaction products were purified using the BigDye X-terminator purification kit (Applied Biosystems) followed by capillary electrophoresis in an ABI 3500 Genetic analyzer (Applied Biosystems). The final analysis was performed using the Sequence Analysis Software v5.4 (Applied Biosystems).

RESULTS

The genomic analysis revealed a novel duplication variant c.1332dup, p.(D445*) at exon 9 of the *LDLR* gene in the two patients (Figure 1). Both patients were determined to be homozygous for this variant, which expresses a premature stop codon at position 445 in exon 9 of the *LDLR* gene. Consequently, a truncated protein is produced, which is a defective LDL receptor. In addition to this novel nonsense variant, we also identified a known silent variant c.1413A > G, p.(=), rs5930, NM_001195798.1 in both patients at exon 10 of the *LDLR* gene (Table 1). Figure 1a shows the pedigree of the family (the parents and the first-degree relatives were not available for DNA analysis at the time of the study). Table 1 also shows the total and LDL cholesterol levels with values reaching 18.11 and 15.05 mmol/l in patient one and 15.13 and 12.98 mmol/l in patient two. These values are considered very high compared with the optimal level, which is < 2.59 mmol/l (LDL cholesterol). This confirms the loss of LDLR function because of the nonsense variant present in the DNA sequence.

DISCUSSION

To date, there are more than 1,288 *LDLR* variants reported in FH patients worldwide that are regarded as pathogenic variants.^{8,14–16} We identified a novel duplication variant (c.1332dup) at exon 9 of the *LDLR* gene. This duplication generates a defective LDL receptor because of the premature stop codon at position 445 in exon 9 of the human *LDLR* gene. No other variants were observed in the *LDLR*, *APOB* and *PCSK9* genes.

Table 1. Characteristics of the studied patients with the novel nonsense variant p.(D445*) at exon 9 of the *LDLR* gene

Mutations and parameters	Patient 1	Patient 2	Normal range (mmol/l)
Nonsense variant in exon 9 of the <i>LDLR</i> gene	c.1332dup, p.(D445*)	c.1332dup, p.(D445*)	—
Silent variant in exon 10 of the <i>LDLR</i> gene	c.1413A > G, p.(=) rs5930, NM_001195798.1	c.1413A > G, p.(=) rs5930, NM_001195798.1	—
Sex (M/F)	F	F	—
Age (year)	20	22	—
Total cholesterol (mmol/l)	18.111	15.133	3.8–7.5
LDL-C (mmol/l)	15.05	12.98	2.6–5.2
Triglyceride (mmol/l)	1.01	1.43	0.3–1.6
HDL-C (mmol/l)	0.95	1.12	0.8–2.1
Medication	Ezetimibe, Acetazolamide, Simvastain	Ezetimibe, Simvastain	—
CHD history in parents	Yes	Yes	—

Abbreviations: CHD, coronary heart disease; F, female; HDL-C, high-density lipoprotein-cholesterol; LDL-C, low-density lipoprotein-cholesterol; LDLR, low-density lipoprotein receptor; M, male.

This novel nonsense variant is localized in the EGF precursor homology domain. Theoretically, the membrane-spanning domain and the remainder of the LDLR protein cannot be synthesized; therefore, the truncated protein may be degraded by the proteasome machinery. This hypothesis agrees with the patient phenotypes, that is, both patients were resistant to statin therapy and were on an apheresis program. Furthermore, an earlier study determined that up to 54% of LDLR variants that resulted in FH were localized in the epidermal growth factor precursor (EGFP) homology domain.¹⁶ Marduel *et al.*⁷ reported nine nonsense variants that were classified as FH-causing variants because of the synthesis of a truncated protein. In addition, the lipid profile of our patients supports the loss of LDLR function, as the analysis of the total and LDL cholesterol levels revealed an extremely high concentration of more than 12 mmol/l. Interestingly, the levels of LDL and total cholesterol in both our patients are higher compared with the maximal level of the FH group that was presented in Marduel *et al.*⁷ This suggests that it is necessary to establish a validated LDL concentration cut-off for the clinical diagnosis of FH in Saudi Arabia. In conclusion, the segregation pattern of the variant is consistent with the lipid profile (Figure 1 and Table 1), suggesting a more severe FH phenotype when the variant is in the homozygous state.

COMPETING INTERESTS

The authors declare no conflict of interest.

ACKNOWLEDGEMENTS

We acknowledge the patients and their family members for their cooperation. We thank the members of the Science and Technology Unit at Umm Al-Qura University for their support. We also thank Dr Lisandra De Castro Brás, University of Mississippi Medical Center, for proofreading the manuscript. This work was supported by the National Science, Technology and Innovation Plan (grant 08-BIO34-10), Kingdom of Saudi Arabia.

REFERENCES

- 1 Abifadel M, Varret M, Rabes JP, Allard D, Ouguerram K, Devillers M *et al.* Mutations in *PCSK9* cause autosomal dominant hypercholesterolemia. *Nat Genet* 2003; **34**: 154–156.
- 2 Timms KM, Wagner S, Samuels ME, Forbey K, Goldfine H, Jammulapati S *et al.* A mutation in *PCSK9* causing autosomal-dominant hypercholesterolemia in a Utah pedigree. *Hum Genet* 2004; **114**: 349–353.

- 3 Al-Allaf FA, Coutelle C, Waddington SN, David AL, Harbottle R, Themis M. *LDLR*-Gene therapy for familial hypercholesterolaemia: problems, progress, and perspectives. *Int Arch Med* 2010; **3**: 36.
- 4 Hobbs HH, Brown MS, Goldstein JL. Molecular genetics of the LDL receptor gene in familial hypercholesterolemia. *Hum Mutat* 1992; **1**: 445–466.
- 5 Heath KE, Humphries SE, Middleton-Price H, Boxer M. A molecular genetic service for diagnosing individuals with familial hypercholesterolaemia (FH) in the United Kingdom. *Eur J Hum Genet* 2001; **9**: 244–252.
- 6 Leigh SE, Foster AH, Whittall RA, Hubbart CS, Humphries SE. Update and analysis of the University College London low density lipoprotein receptor familial hypercholesterolemia database. *Ann Hum Genet* 2008; **72**: 485–498.
- 7 Marduel M, Carrie A, Sassolas A, Devillers M, Carreau V, Di Filippo M *et al.* Molecular spectrum of autosomal dominant hypercholesterolemia in France. *Hum Mutat* 2010; **31**: E1811–E1824.
- 8 Usifo E, Leigh SE, Whittall RA, Lench N, Taylor A, Yeats C *et al.* Low-density lipoprotein receptor gene familial hypercholesterolemia variant database: update and pathological assessment. *Ann Hum Genet* 2012; **76**: 387–401.
- 9 Steyn K, Goldberg YP, Kotze MJ, Steyn M, Swanepoel AS, Fourie JM *et al.* Estimation of the prevalence of familial hypercholesterolaemia in a rural Afrikaner community by direct screening for three Afrikaner founder low density lipoprotein receptor gene mutations. *Hum Genet* 1996; **98**: 479–484.
- 10 Leitersdorf E, Tobin EJ, Davignon J, Hobbs HH. Common low-density lipoprotein receptor mutations in the French Canadian population. *J Clin Invest* 1990; **85**: 1014–1023.
- 11 Jaber L, Halpern GJ, Shohat M. The impact of consanguinity worldwide. *Community Genet* 1998; **1**: 12–17.
- 12 Thusberg J, Vihinen M. Pathogenic or not? And if so, then how? Studying the effects of missense mutations using bioinformatics methods. *Hum Mutat* 2009; **30**: 703–714.
- 13 Scientific Steering Committee on behalf of the Simon Broome Register Group. Risk of fatal coronary heart disease in familial hypercholesterolaemia. *Br Med J* 1991; **303**: 893–896.
- 14 Mollaki V, Progiaris P, Drogari E. Novel LDLR variants in patients with familial hypercholesterolemia: in silico analysis as a tool to predict pathogenic variants in children and their families. *Ann Hum Genet* 2013; **77**: 426–434.
- 15 Ahmed W, Whittall R, Riaz M, Ajmal M, Sadeque A, Ayub H *et al.* The genetic spectrum of familial hypercholesterolemia in Pakistan. *Clin Chim Acta* 2013; **421**: 219–225.
- 16 Wang H, Xu S, Sun L, Pan X, Yang S, Wang L. Functional characterization of two low-density lipoprotein receptor gene mutations in two Chinese patients with familial hypercholesterolemia. *PLoS ONE* 2014; **9**: e92703.



This work is licensed under a Creative Commons Attribution 3.0 Unported License. The images or other third party material in this article are included in the article's Creative Commons license, unless indicated otherwise in the credit line; if the material is not included under the Creative Commons license, users will need to obtain permission from the license holder to reproduce the material. To view a copy of this license, visit <http://creativecommons.org/licenses/by/3.0/>

Supplementary Information for this article can be found on the *Human Genome Variation* website (<http://www.nature.com/hgv>)