

SUPPLEMENTARY INFORMATION B

Supplementary figures

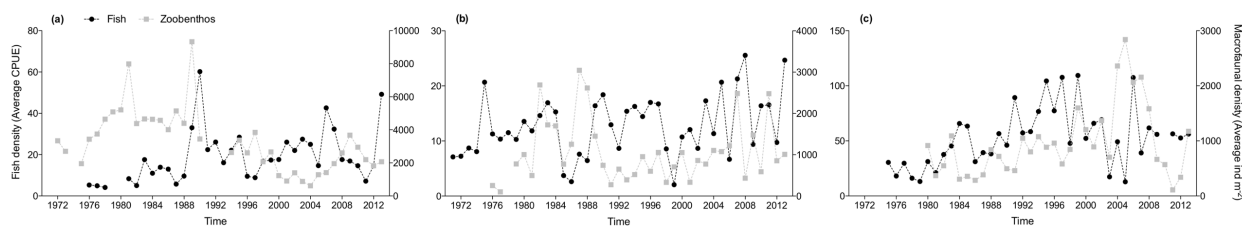
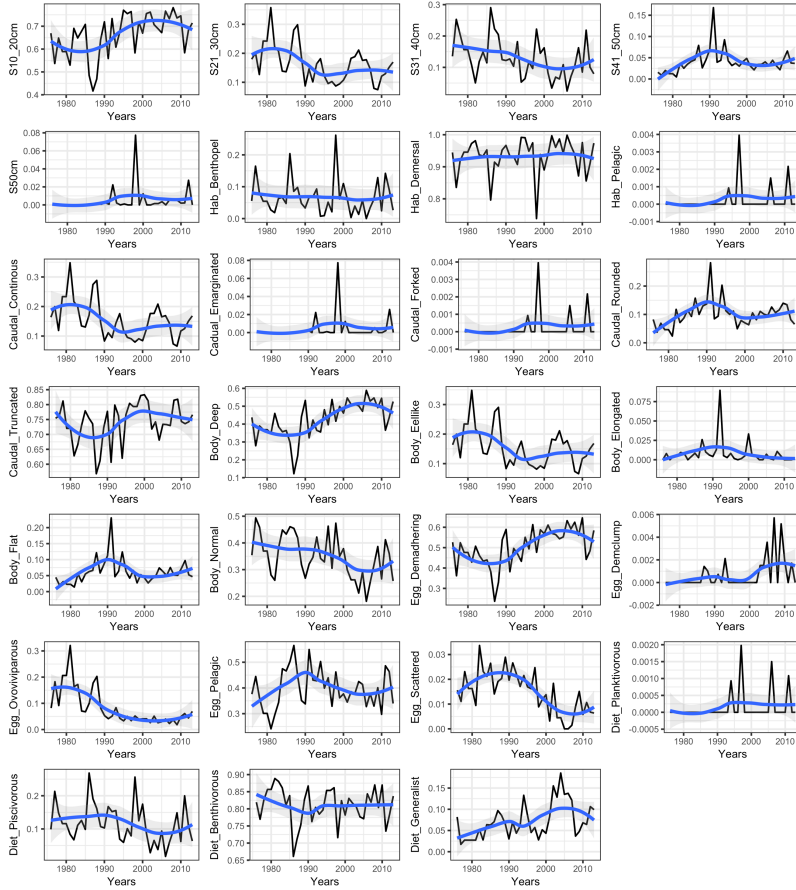
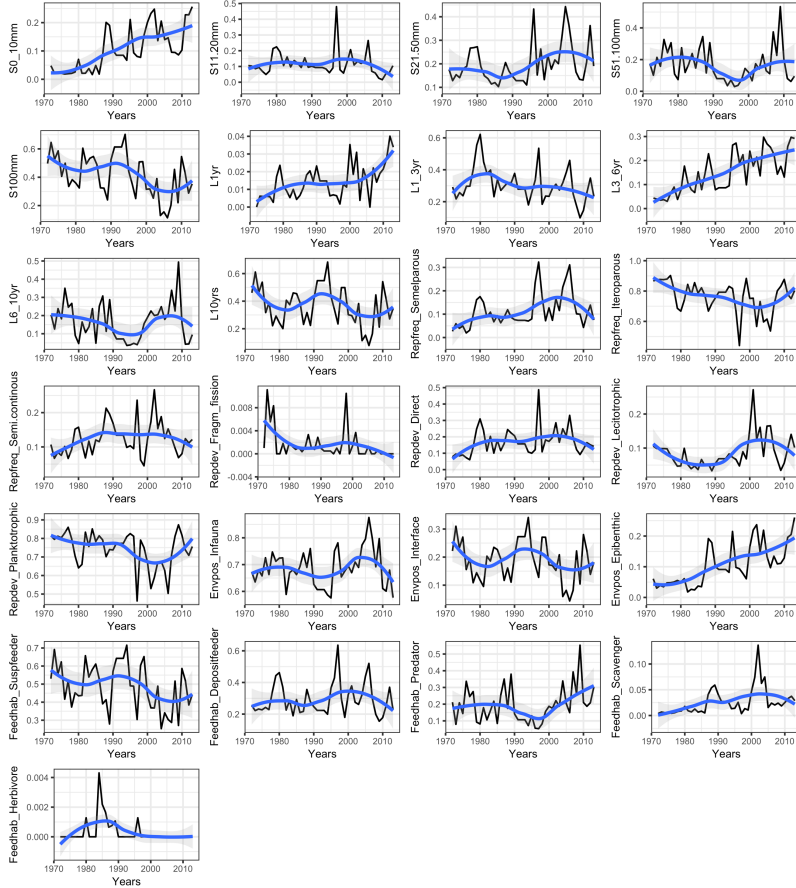


Figure S1. Density of fish and zoobenthos over time. Density trend of fish (average CPUE) and zoobenthos (Average abundance, m⁻²) in (a) Kattegat, (b) Baltic Proper, (c) Bothnian Sea.

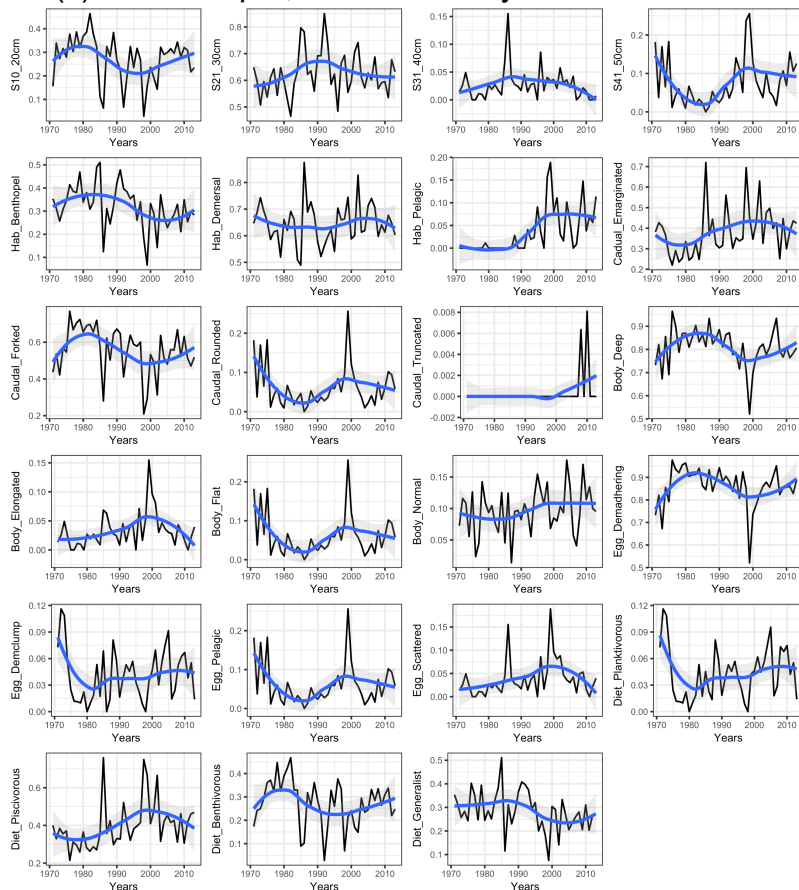
(a) Kattegat, fish community



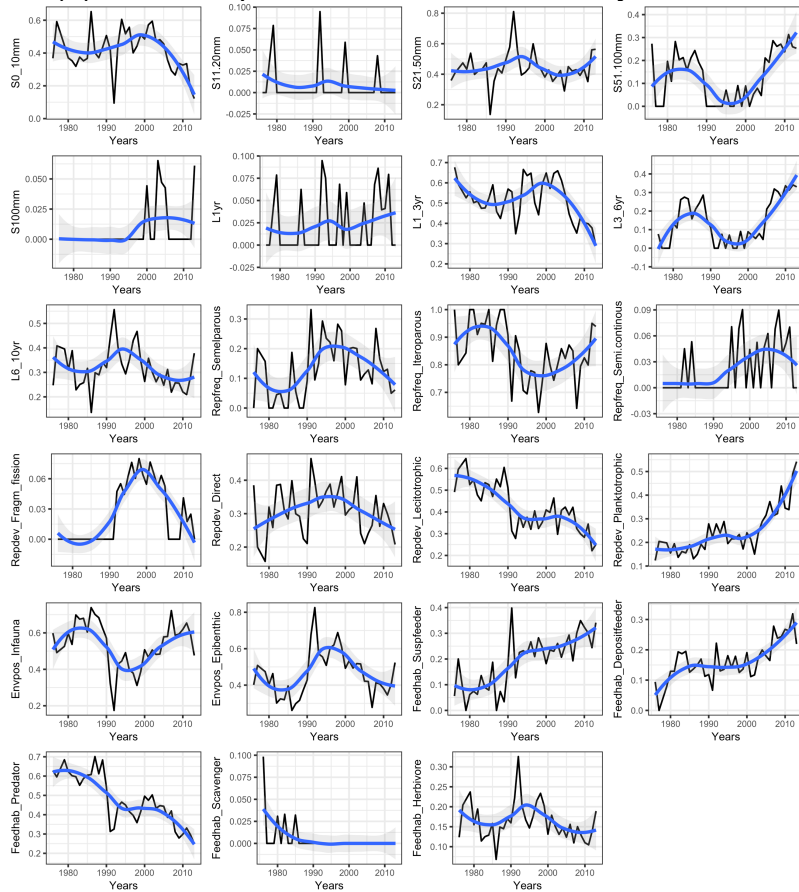
(b) Kattegat, zoobenthos community



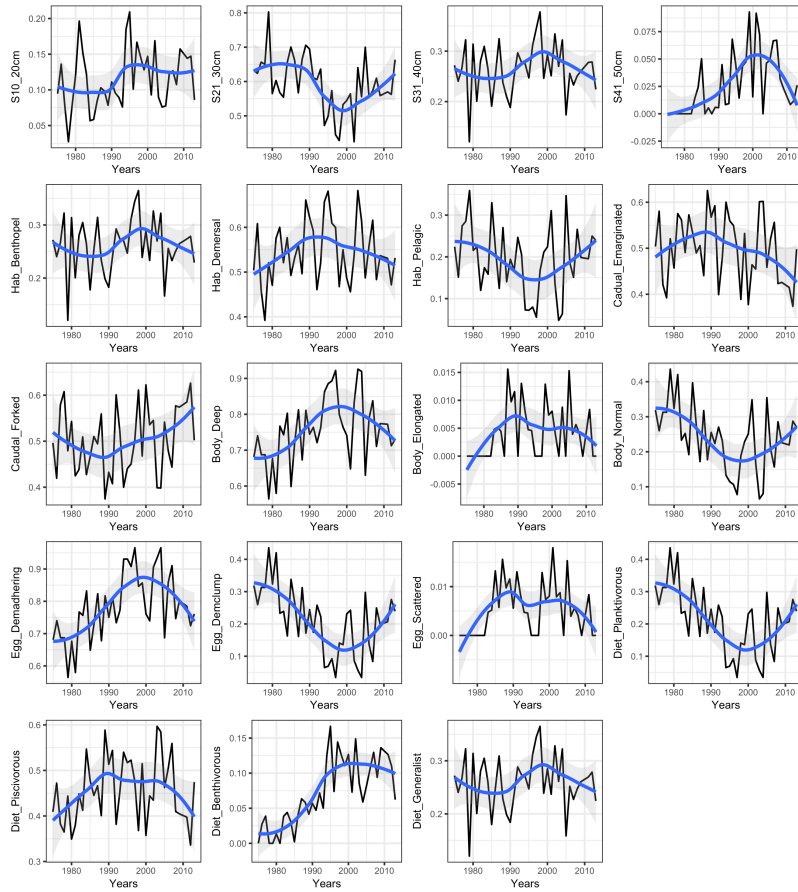
(c) Baltic Proper, fish community



(d) Baltic Proper, zoobenthos community



(e) Bothnian Sea, fish community



(f) Bothnian Sea, zoobenthos community

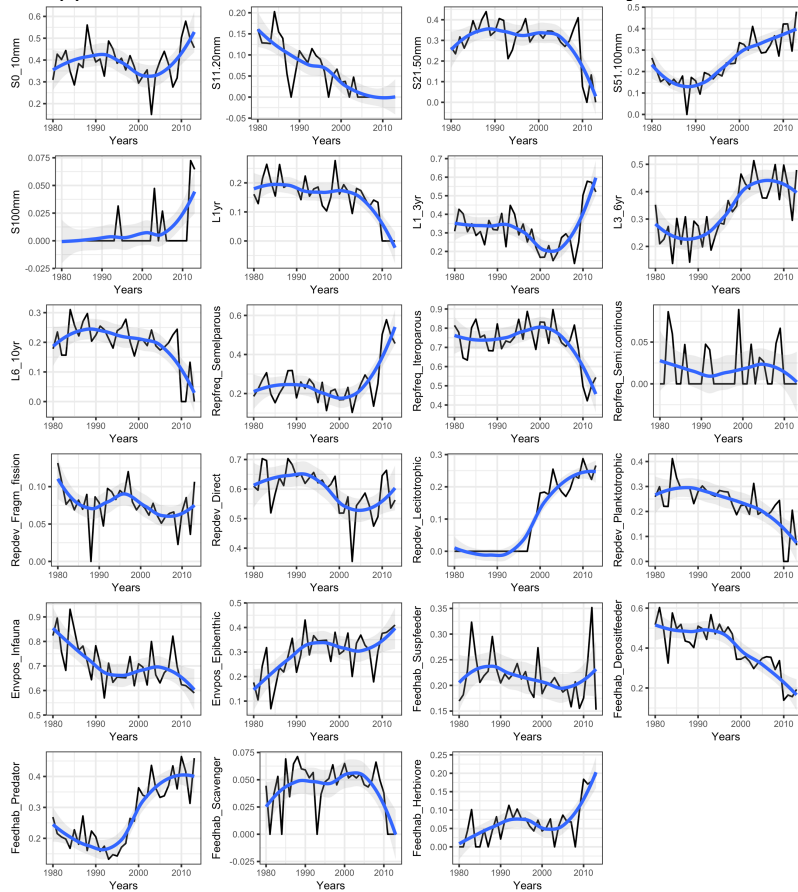
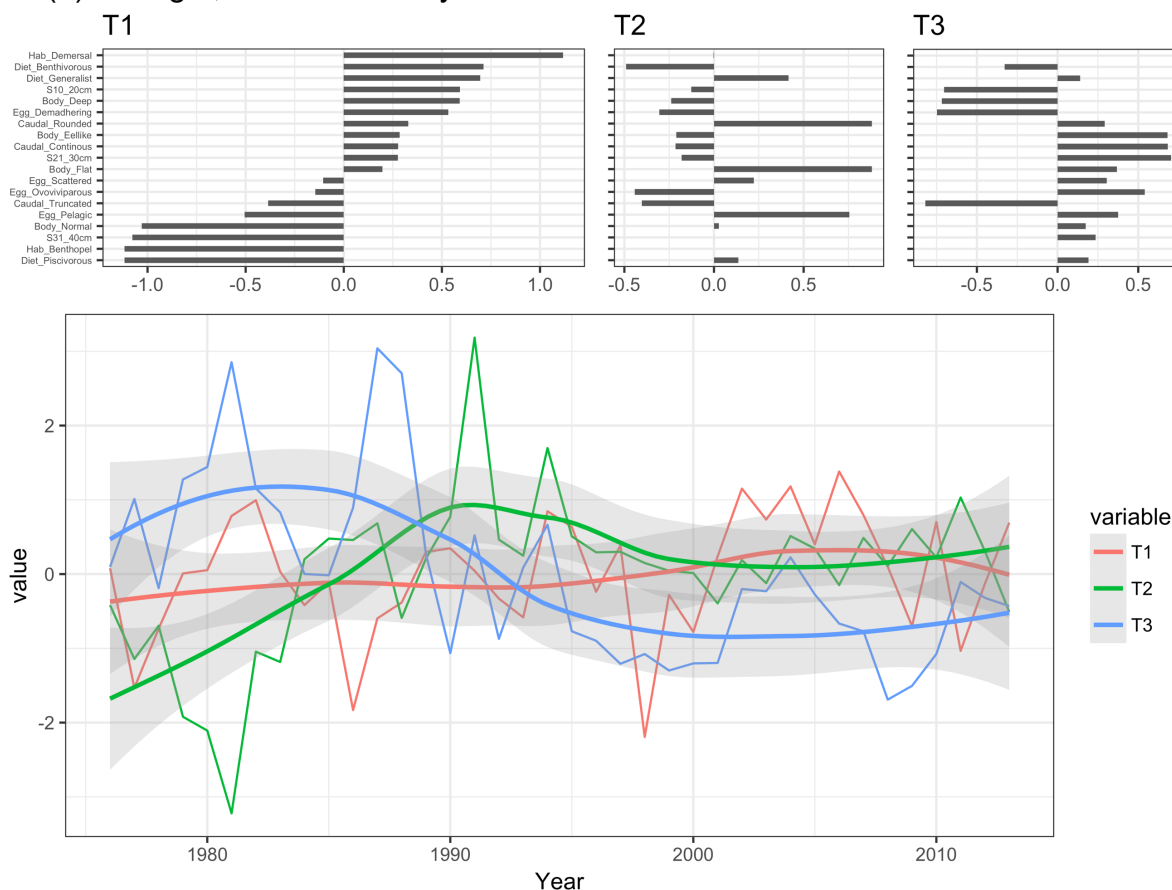
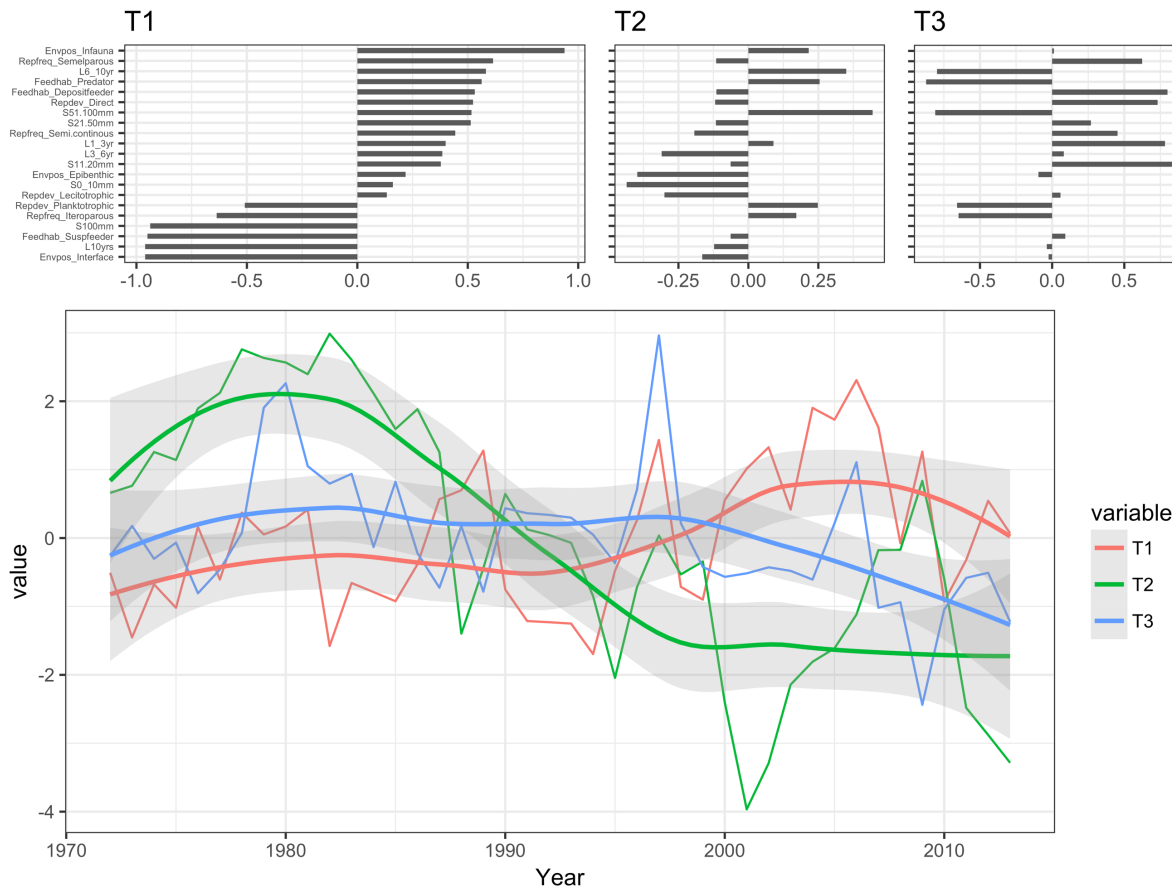


Figure S2. Temporal changes in individual trait categories for fish and zoobenthos in the three coastal areas. Temporal changes in individual trait categories (Community-weighted mean traits, CWMs) in Kattegat (a-b), Baltic Proper (c-d) and Bothnian Sea (e-f) for fish and zoobenthos, respectively. Trend lines (blue) and confidence intervals are produced with the loess method in R.

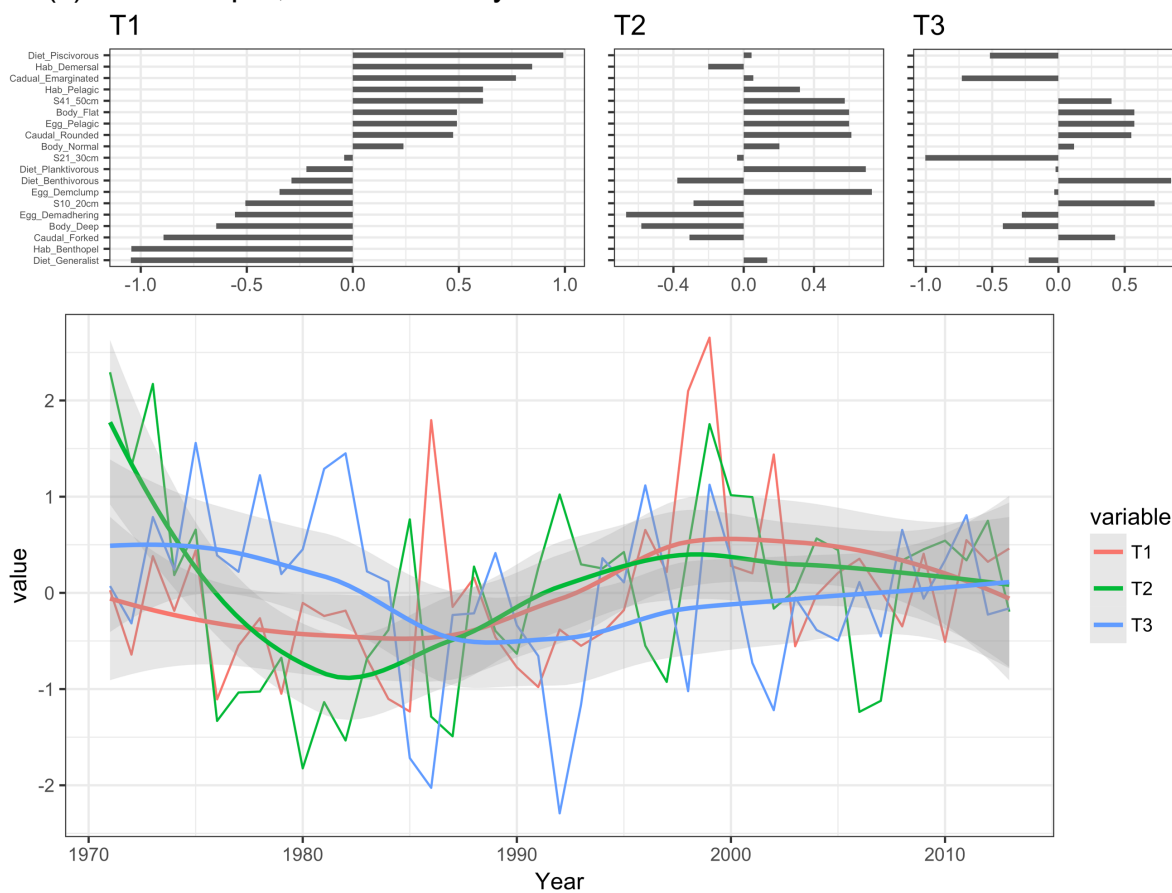
(a) Kattegat, Fish community



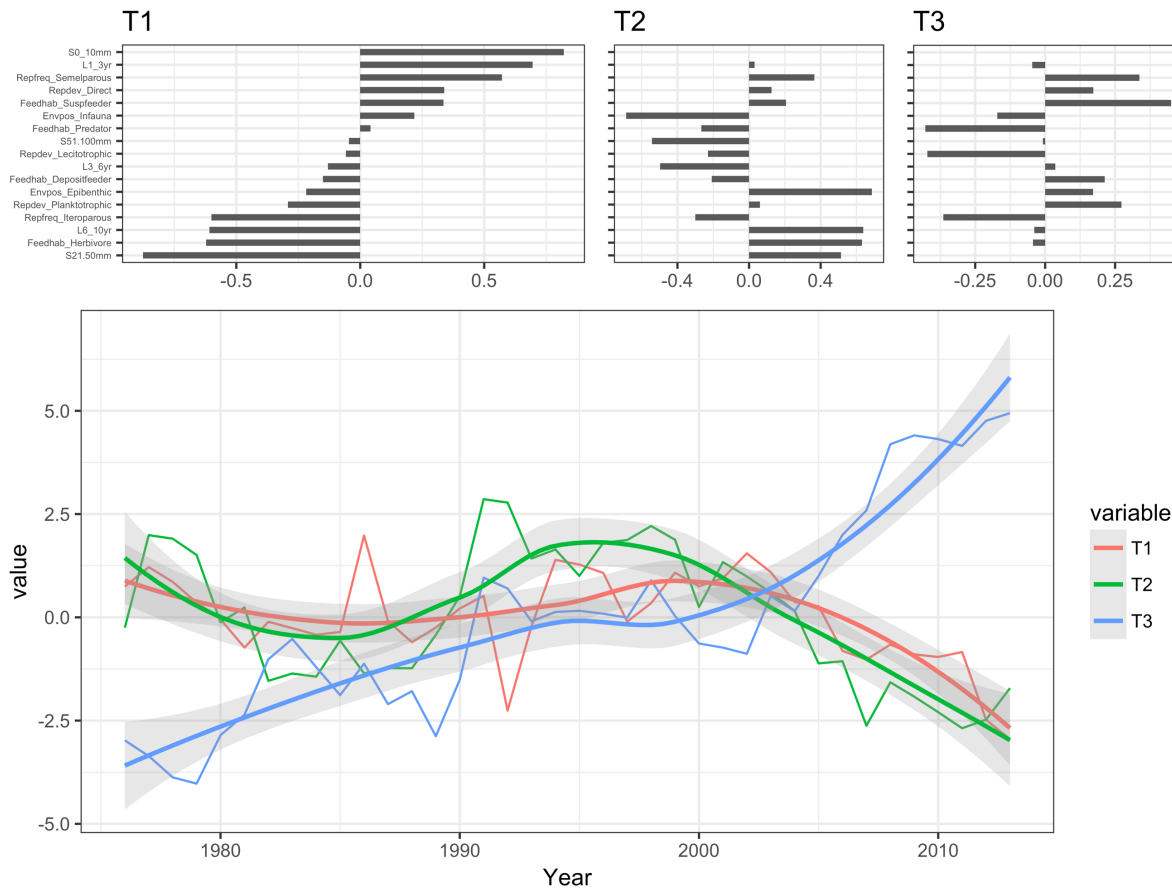
(b) Kattegat, zoobenthos community



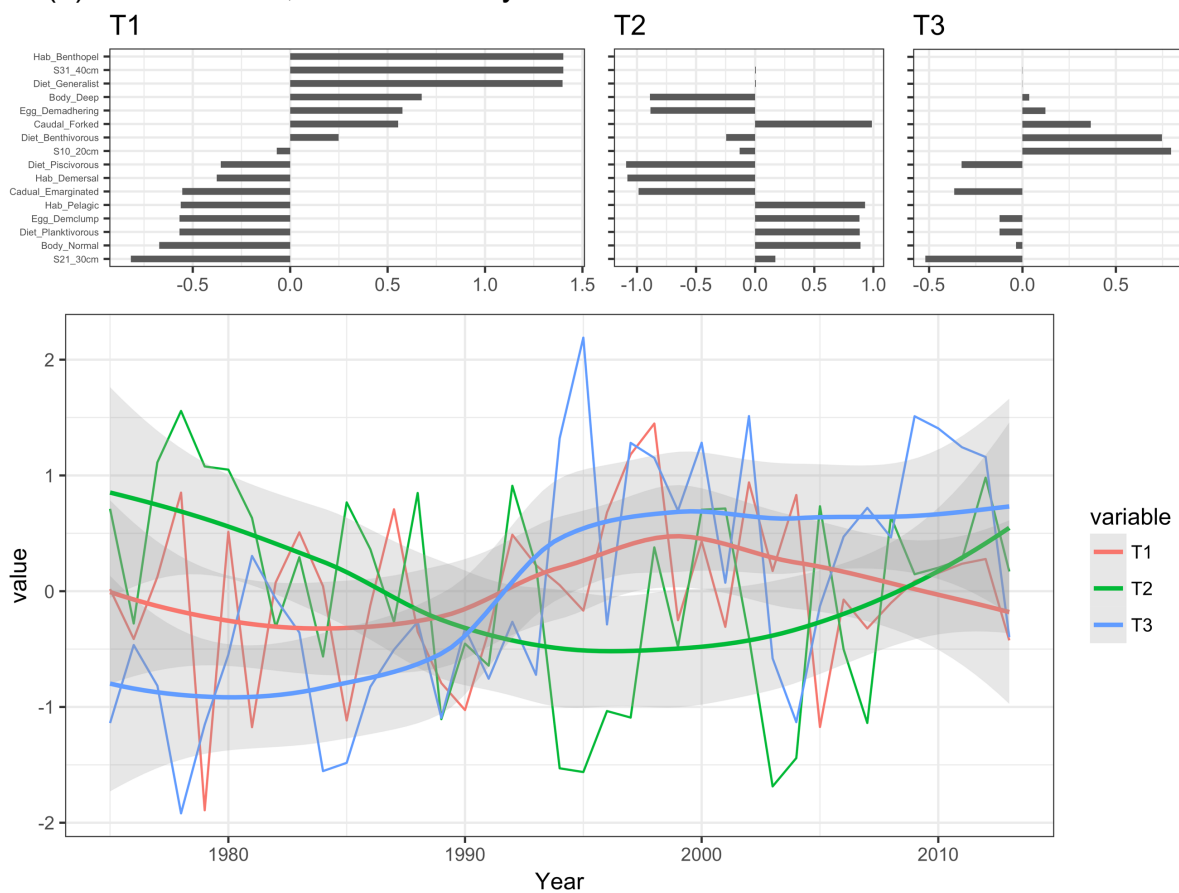
(c) Baltic Proper, fish community



(d) Baltic Proper, zoobenthos community



(e) Bothnian Sea, fish community



(f) Bothnian Sea, zoobenthos community

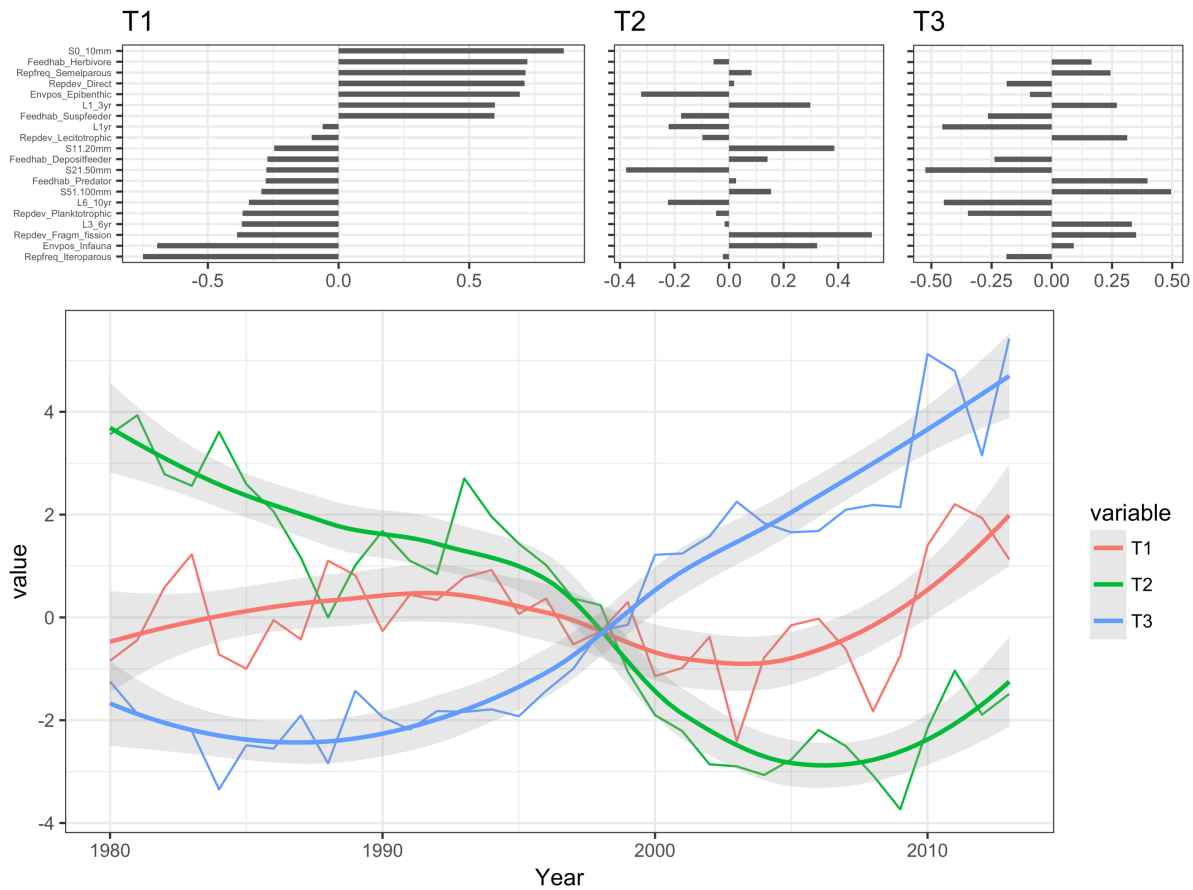


Figure S3. Multi-trait compositional changes of fish and zoobenthos. Time series trends (T1, T2, T3) and factor loadings (trait categories) in Kattegat (a-b), Baltic Proper (c-d) and Bothnian Sea (e-f) for fish and zoobenthos, respectively. Factor loading labels are arranged in decreasing order along time series trend T1. Trends and factor loadings are computed using DFA in the program R.