

# QSPR analysis of some agonists and antagonists of $\alpha$ -adrenergic receptors

Piotr Kawczak · Leszek Bober · Tomasz Bączek

Received: 9 April 2014 / Accepted: 20 June 2014 / Published online: 15 July 2014  
© The Author(s) 2014. This article is published with open access at Springerlink.com

**Abstract** Thirty-three compounds belonging to the sympatholytics and sympathomimetics were analyzed during the study. The biological activity data for the parameters of binding affinity to the  $\alpha_1$ - and  $\alpha_2$ -adrenergic receptors together with parameters of the logarithm of the partition coefficient *n*-octanol/water ( $\log P$ ) were performed using a semi-empirical calculations methods for isolated molecules (in vacuo) and for the molecules placed in an aqueous environment. Additionally, the chromatographic retention data were used as extra dependent variables of the structural parameters for a part of the considered compounds. Finally, all those groups of parameters were analyzed using MLR, PCA, and FA methods for the classification of studied compounds according to their chemical structures and pharmacological activity to the adrenoceptors.

**Keywords** Adrenergic receptors · Agonists · Antagonists · PCA · FA · RP-LC

## Introduction

Stimulants of  $\alpha_1$ - and  $\alpha_2$ -adrenergic receptors belong to the sympathomimetics stimulating sympathetic autonomic nervous system. Depending on the receptor that is stimulated, various physiological effects such as contractions of vascular smooth muscle, spasm of sphincter, mydriasis, etc. are observed (Schmitz *et al.*, 1981; Robinson and Hudson, 1998; Fitzpatrick *et al.*, 2004).

Sympathomimetic natural neurotransmitter, noradrenaline, resulting from the amino acid—tyrosine. Because noradrenaline is an unstable compound (which is prone to oxidation) and further is pointless cause all of the physiological effects for which noradrenaline is responsible. Man has developed a number of synthetic stimulants which have a selective effect with respect to the physiological receptor  $\alpha_1$  and  $\alpha_2$ , in particular postsynaptic. On the other hand, the agents that block  $\alpha_1$  and  $\alpha_2$ -adrenergic receptors (selectively or not) belong to the sympatholytics (adrenolytics), i.e., agents inhibiting the sympathetic nervous system: imidazoline derivatives (phentolamine, tolazoline) block both types of  $\alpha$  receptors, derivatives of piperazinichinazolin (prazosin, doxazosin, terazosin) block selectively  $\alpha_1$  receptors, ergot alkaloids block predominantly  $\alpha_2$  receptors, and yohimbine blocks selectively  $\alpha_2$  receptors. Blocking agents of  $\alpha$ -adrenergic receptors are most commonly used as cardiovascular drugs:  $\alpha_1$ -blockers as anti-hypertensive drugs,  $\alpha_2$ -blockers as hypertensive ones; ergot alkaloids have a contractive effect on the uterus, but their hydrogenated derivatives are devoid of this activity, improving peripheral blood. Non-specific  $\alpha$ -blockers

**Electronic supplementary material** The online version of this article (doi:10.1007/s00044-014-1130-x) contains supplementary material, which is available to authorized users.

P. Kawczak (✉) · T. Bączek  
Department of Pharmaceutical Chemistry, Medical University  
of Gdansk, 80-416 Gdańsk, Poland  
e-mail: p99p@gumed.edu.pl

T. Bączek  
e-mail: tbaczek@gumed.edu.pl

L. Bober  
POLPHARMA SA Pharmaceutical Works, 83-200 Starogard  
Gdański, Poland

T. Bączek  
Division of Human Anatomy and Physiology, Institute of Health  
Sciences, Pomeranian University of Słupsk,  
76-200 Słupsk, Poland

accelerate the heart rate, dilate peripheral vessels, increasing the contractility of intestines and secretory activity of gastric mucosal (Schmitz *et al.*, 1981; Robinson and Hudson, 1998; Fitzpatrick *et al.*, 2004).

Over time, agonists and antagonists of adrenoceptors have become the subject of a number of works in the field of molecular modeling, lipophilicity, and structure–activity as well as 3D QSAR (Eric *et al.*, 2004; Balogh *et al.*, 2007, 2009; Nikolic *et al.*, 2008; Zhao *et al.*, 2011; Yadav *et al.*, 2013).

Timmermans and co-workers have published interesting series of papers about agonists and antagonists of adrenoceptors in order to characterization and classification of selected molecules (Timmermans *et al.*, 1981, 1984; Timmermans and Van Zwieten, 1982). In one of these papers (Timmermans *et al.*, 1984), the authors have considered hypotensive and hypertensive activity relationships of  $\alpha$ -adrenomimetics and experimentally determined logarithm of the *n*-octanol/water partition coefficient,  $\log P$ , and also experimentally determined binding affinity to  $\alpha_1$  and  $\alpha_2$  receptors. Obtained by the authors, relationships according to the activity and logarithm of the partition coefficient were unsatisfactory. More preferably shown themselves to be the relationships in term of binding affinity ( $R > 0.9$ ). For  $\alpha$ -adrenolytics, authors presented relationships according to indexes of  $\alpha_1/\alpha_2$  adrenoceptor antagonist selectivity in vivo and indexes of  $\alpha_1/\alpha_2$  adrenoceptor antagonist of pre and postsynaptic selectivity in vivo considering selectivity indexes of binding of  $\alpha_1/\alpha_2$  adrenoceptor to the corresponding ones ( $R > 0.9$ ).

The objective of the presented study was to analyze the biological activity data (Timmermans *et al.*, 1984), the parameters of binding affinity to the  $\alpha_1$  and  $\alpha_2$  receptors together with parameters of the logarithm of the partition coefficient *n*-octanol/water ( $\log P$ ) using semi-empirical calculations methods (Bączek, 2006; Bodzioch *et al.*, 2010) for isolated molecules (in vacuo) and the for the molecules placed in an aqueous environment. In addition, for a part of the consideration, compounds were available chromatographic retention data (Nasal *et al.*, 1997), which were used as the dependent variables of the structural parameters.

The aim of this study was to demonstrate the characteristics of both common and differentiating the analyzed compounds in terms of physicochemical and pharmacological effects.

## Experimental procedure

### Molecules

The following compounds were selected for testing according to reference (Timmermans *et al.*, 1984):

- $\alpha$ -adrenergic antagonists (AN): prazosin, phentolamine, dihydroergotamine, clozapine, corynanthine, azapetine, yohimbine, piperoxan, tolazoline, mianserin, rauwolscine;
- $\alpha$ -adrenergic agonists (AG): lofexidine, clonidine, naphazoline, tiamenidine, xylazine, tramazoline, xylometazoline, tetryzoline, methoxamine, phenylephrine, amidephrine, cirazoline, guanabenz, oxymetazoline, and eight compounds of an experimental structures, marked as symbols: DPI, Sgd 101/75, DP-5-ADTN, DP-7-ADTN, DP-5,6-ADTN, DP-6,7-ADTN, St 587, and M-7 (Fig. 1).

### Biological activity data

The study used the literature-quoted data of biological activity (Timmermans *et al.*, 1984), are presented in Table 1S. The activity of  $\alpha$ -adrenergic agonists—antihypertensive activity was derived from the stimulation of central  $\alpha_2$ -adrenoceptors, pC<sub>25</sub>. The authors expressed data for pC<sub>25</sub> in  $\mu\text{mol/kg}$ . The values of pC<sub>25</sub> were available for lofexidine, clonidine, naphazoline, tiamenidine, xylazine, tramazoline, xylometazoline, and tetryzoline.

For the  $\alpha$ -adrenergic, antagonists were used:

- antagonistic activity against phenylephrine induced via  $\alpha_1$ -adrenoceptors vasoconstriction in rats, pA<sub>2 post</sub> ( $\alpha_1$ )—in vivo,
- antagonistic activity of phenylephrine- or norepinephrine-induced stenosis of isolated rabbit pulmonary artery through  $\alpha_1$ -adrenereceptors post, pA<sub>2 post</sub> ( $\alpha_1$ )—in vitro.

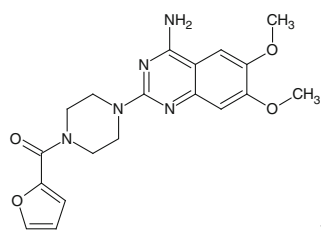
Activities expressed as pA<sub>2</sub> were derived from the equation (Timmermans *et al.*, 1984):

$$pA_2 = \log(\text{dose ratio} - 1) - \log(\text{antagonist concentration}) \quad (1)$$

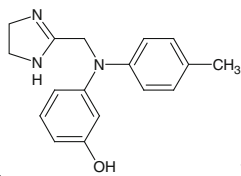
### Chromatographic and lipophilicity data

The values of the logarithm of partition coefficient,  $\log P$ , were derived from the paper by Timmermans *et al.* (1984), and they are refer to compounds: lofexidine, clonidine, naphazoline, tiamenidine, xylazine, tramazoline, xylometazoline, tetryzoline, cirazoline, St-587, and oxymetazoline (Table 2S).

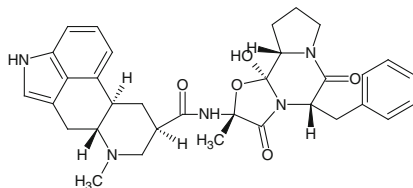
Chromatographic data were derived from the article by Nasal *et al.* (1997), and they are refer to compounds: lofexidine, clonidine, naphazoline, tiamenidine, xylometazoline, tetryzoline, cirazoline, oxymetazoline, prazosin, phentolamine, and tolazoline (Table 2S). These are the values of the logarithms of retention factors determined on Chiral AGP ( $\log k_{AGP}$ ), immobilized artificial membranes IAM.PC.MG ( $\log K_{IAM}$ ) and also the logarithm values of lipophilicity coefficients determined by the polycratic

**$\alpha$ -adrenergic antagonists**

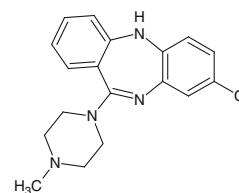
prazosin



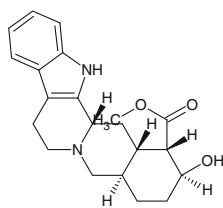
phentolamine



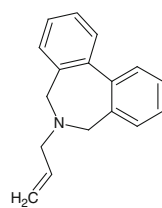
dihydroergotamine



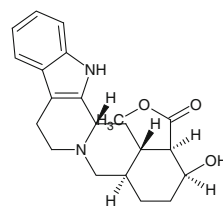
clozapine



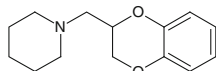
corynanthine



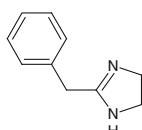
azapetine



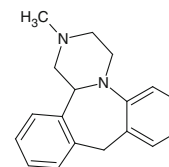
yohimbine



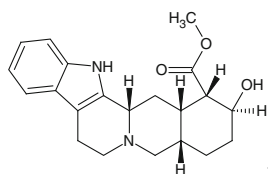
piperoxan



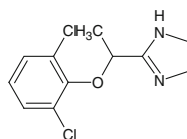
tolazoline



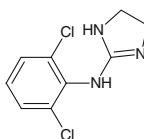
mianserin



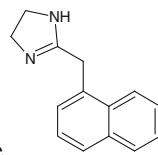
rawolscine

 **$\alpha$ -adrenergic agonists**

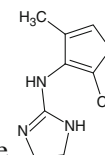
lofexidine



clonidine



naphazoline



tiamenidine

**Fig. 1** Structural formulas of compounds studied

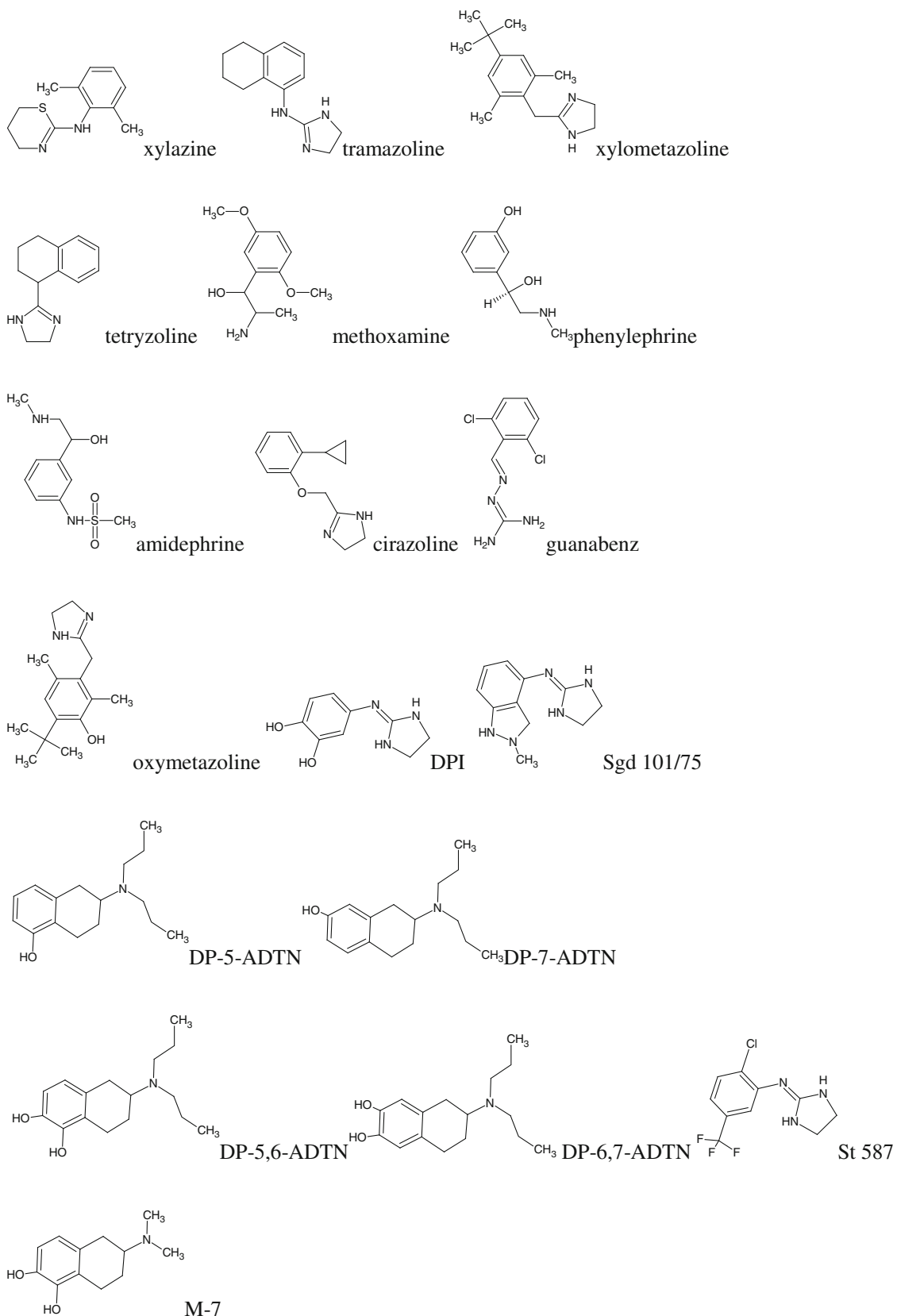
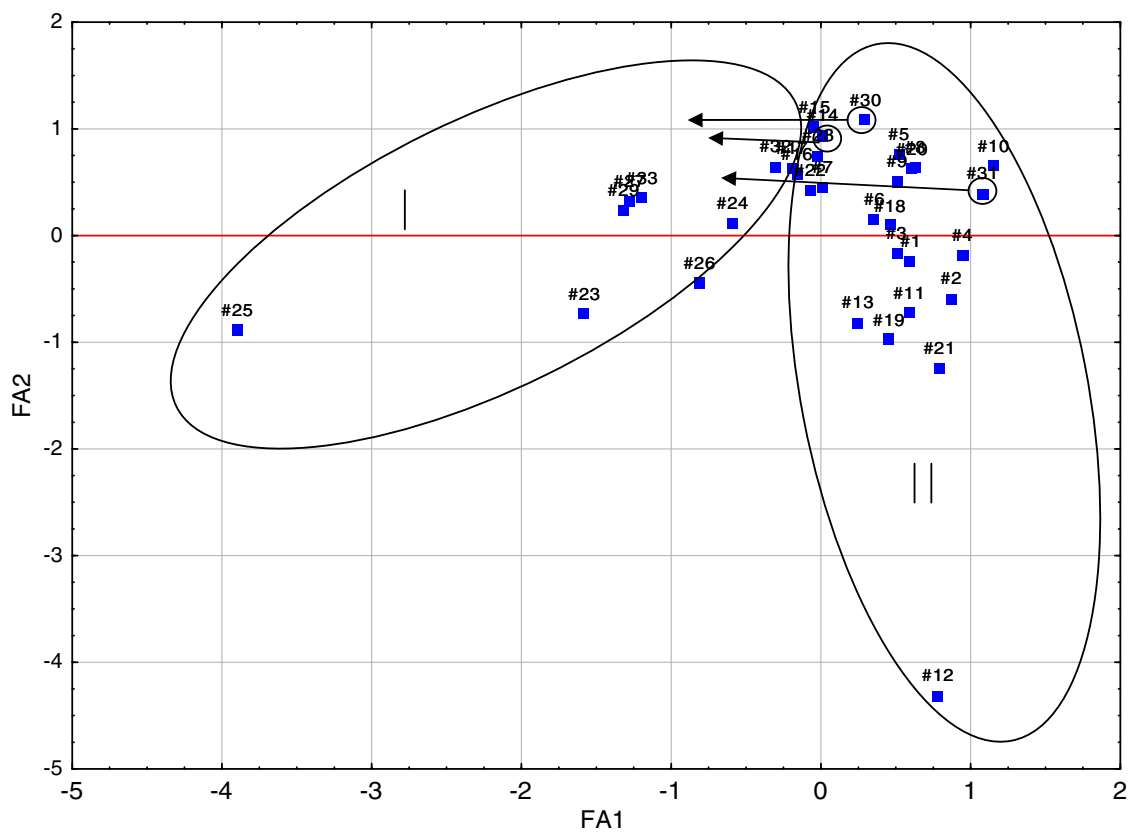
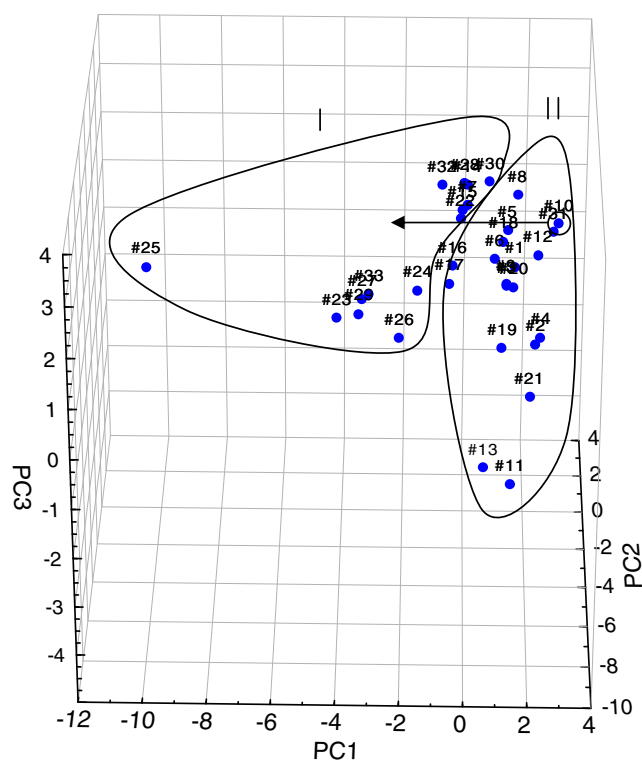


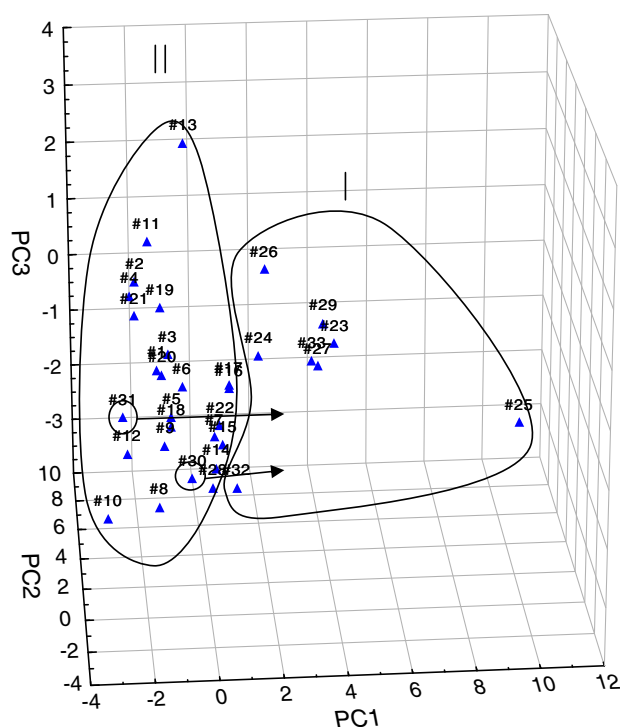
Fig. 1 continued

**Fig. 2** Three-dimensional scatter plots of the loadings of the first three factors (PC1—42,74 %, PC2—24,47 %, PC3—12,16 %) obtained by PCA of structural parameters derived from the quantum-chemical calculations in vacuo for all 33 considered compounds; where I— $\alpha$ -adrenergic antagonists (AN) and II— $\alpha$ -adrenergic agonists (AG)



**Fig. 3** Two-dimensional scatter plots of the loadings of the first two factors (FA1—42,74 %, FA2—24,47 %) obtained by FA of structural parameters derived from the quantum-chemical calculations in vacuo

for all 33 considered compounds; where I— $\alpha$ -adrenergic antagonists (AN) and II— $\alpha$ -adrenergic agonists (AG)



**Fig. 4** Three-dimensional scatter plots of the loadings of the first three factors (PC1—42,59 %, PC2—25,49 %, PC3—10,90 %) obtained by PCA of structural parameters derived from the quantum-chemical calculations in the aquatic environment for all 33 considered compounds; where I— $\alpha$ -adrenergic antagonists (AN) and II— $\alpha$ -adrenergic agonists (AG)

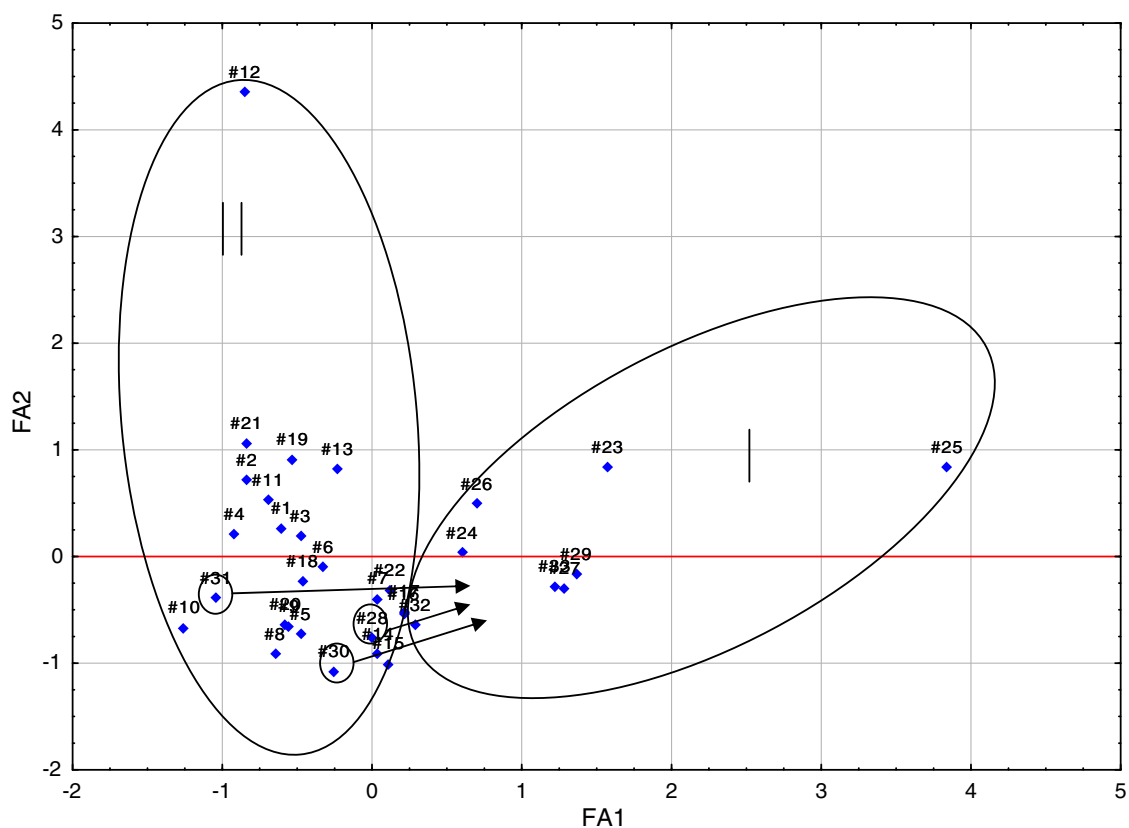
method on Suplex pKb-100, pH 7.4 ( $\log k_{w7.4Su}$ ), Spheri RP-18, pH 2.5 ( $\log k_{w2.5Sp}$ ), and Aluspher RP select B, pH 7.3 ( $\log k_{w7.3Al}$ ).

#### Molecular descriptors

The non-empirical structural indicators, i.e., quantum-chemical indicators, were calculated in the study. The PCM (Polarizable Continuum Model) method (Tomasi and Persico, 1994; Tomasi *et al.*, 2005; Caricato and Scalmani, 2011) would be prefer in the ab initio calculations for the all tested compounds as we previously presented (Bober *et al.*, 2012a, b), but the size of some analyzed molecules (e.g., alkaloids of  $\alpha$ -adrenergic antagonists with the number of atoms above 50) complicated or even prevented the use of ab initio methods under these consideration on a standard class PC. The only choice was to use a semi-empirical method for the whole group of analyzed compounds by placing one by one molecule in the environment of water molecules. The structure of the tested compounds was studied by molecular modeling using HyperChem Release 8.0 (Hypercube Inc., Gainesville, FL, USA) software. The geometry of the molecule was initially optimized by molecular mechanics MM+ and then using the

semiempirical method RM1 (HyperChem<sup>®</sup> Computational Chemistry, 1996). After completing the optimization a single point calculation was performed. The molecule was placed in a periodic box, which dimensions was selected in such a way that program has placed within around 40 water molecules, and the optimization of the geometry was repeated in an environment of water molecules by RM1. Among the quantum-chemical indices were considered: total energy (TE), binding energy (BE), electron energy (EE), heat of formation (HF) energy, highest occupied molecular orbital (E\_HOMO), the energy of the lowest unoccupied molecular orbital (E\_LUMO), and the difference between HOMO and LUMO energy defined as the energy gap (EG). Moreover, the following values were used: the largest positive charge on the electron atoms (MAX\_POS), the largest negative charge on the electron atoms (MAX\_NEG), the difference between the largest positive and negative charge (DELTA\_Q), the total dipole moment (TDM), the mean polarizability (MPOL), and energy values for the most long-term transition of electron EL (for which a power oscillator  $>0$ ). Values of TE expressed in atomic energy units a.u. or Hartree (1 Hartree = 2625.552 kJ mol<sup>-1</sup>, or 627.552 kcal mol<sup>-1</sup> or 27.2116 eV), energies of HOMO, LUMO, and gap energy expressed in eV (counted above values of a.u. to eV), electron spatial extent in eBohr<sup>-3</sup> (Bohr = 0.5292  $\times 10^{-10}$  m = 0.5292 Å). The values of electron density and electron charges on the atoms are in units of elementary charge ( $e^-$ ), the dipole moment is expressed in Debye (D), and the average polarizability in Bohr<sup>-3</sup> (Bohr = 0.5292  $\times 10^{-10}$  m = 0.5292 Å). Using QSAR module (QSAR Properties Module) of HyperChem 8.0 other non-empirical parameters were calculated—parameter values dependent on the geometry of the molecule: the surface of the molecule accessible to the solvent (SA), expressed in Å<sup>2</sup>, the volume of the particle (V) in Å<sup>3</sup>, and the hydration energy (HE), in kcal mol<sup>-1</sup> for both type of structures optimized by RM1 in vacuo and in the surrounding water molecules.

However, the smaller size structure of  $\alpha$ -adrenergic agonists was additionally studied using the molecular modeling software Gaussian 03 W (v03, Gaussian Inc., Wallingford, CT, USA). The geometry of the molecules was optimized using Hartree–Fock restricted 6-31G (*d*, *p*) also known as 6-31G\*\* (<http://www.gaussian.com/>). The quantum-chemical indices considered from that calculations were as follows: electronic spatial extent (ESE)—defined as the area including the volume around the particles beyond which the electron density is less than 0.001 eBohr<sup>-3</sup> describing the sensitivity of the molecule to the electric field, TE, EHOMO, ELUMO, EG, MAX\_POS, MAX\_NEG, DELTA\_Q, TDM, and finally the isotropic polarizability (IPOL) expressed in eBohr<sup>-3</sup>.



**Fig. 5** Two-dimensional scatter plots of the loadings of the first two factors (FA1—42,59 %, FA2—25,49 %) obtained by FA of structural parameters derived from the quantum-chemical calculations in the

aquatic environment for all 33 considered compounds; where I— $\alpha$ -adrenergic antagonists (AN) and II— $\alpha$ -adrenergic agonists (AG)

### Statistical analysis

The retention data and the data of biological activity of the compounds studied were related to their structural indicators under stepwise, progressive, and multiparametric regression analysis (multiple regression) and calculated with the use of Statistica 10 (v10, StatSoft, Tulsa, OK, USA, 2011) installed on a personal computer. As a preliminary principal component analysis (PCA) and factor analysis (FA) were performed to make the initial classification of compounds under the consideration.

### Results and discussion

The numerical values of 16 structural parameters derived from the quantum-chemical calculations in vacuo for all 33 considered compounds are shown in Table 3S and derived from the quantum-chemical calculations in the aquatic environment for all 33 considered compounds are presented in Table 4S. The numerical values of the 10 structural parameters derived from quantum-chemical calculations in vacuo for 22 considered compounds ( $\alpha$ -adrenergic agonists)

obtained by the PCM (Polarizable Continuum Model) method are shown in Table 5S.

After the PCA and FA for a set of in vacuo calculations found that the greatest impact on the first factor had the mean polarizability (MPOL) and the molecular volume of the particle ( $V$ ), followed by particle surface area (SA), EE, BE, and finally TE and HF. Additionally, it was confirmed by cross-validation method that the above-mentioned three types of energy (TE, BE, EE) are correlated. The second factor was clearly influenced by the difference between the largest positive and negative charge ( $\Delta Q$ ), the largest positive charge on the atom (MAX\_POS) and the largest negative charge on the atom (MAX\_NEG), followed by the energy of the lowest unoccupied molecular orbital (E\_LUMO).

Comparing Figs. 2 and 3 from PCA and FA analyses, it can be seen that between the graphs of the distribution of points corresponding to individual cases relative to each other is very similar, if not identical. It is possible to extract two sets (clusters), including single points for  $\alpha$ -adrenoceptor agonists (numbers of compounds 1–22)—II and  $\alpha$ -adrenoceptor antagonists (23–33)—I. Furthermore, some of the antagonists: azapetine (28), piperoxane (30),

**Table 1** The relationships for the structures of  $\alpha$ -adrenergic agonists and some antagonists optimized in vacuo and in aquatic environment statistical parameters:  $R$ ,  $s$ ,  $F$  and  $P$  of regression equation  $\log k = k_0 + k_1\text{Descriptor}_1 + k_2\text{Descriptor}_2$ , where  $n = 11$ 

$k_1\text{Descriptor}_1$	$k_2\text{Descriptor}_2$	$R$	$s$	$F$	$P$
<i>In vacuo</i>					
$\log k_{\text{AGP}}$					
$0.9019 \pm 0.1440$	–	0.9019	0.1055	39.2375	0.0001
V					
$\log k_{\text{IAM}}$					
$-0.9418 \pm 0.1121$	–	0.9418	0.1633	70.5851	0.0001
BE					
$\log k_{w7.4\text{Su}}$					
$-0.9596 \pm 0.0938$	–	0.9596	0.2424	104.5626	0.0001
BE					
$\log k_{w2.5\text{Sp}}$					
$-1.6761 \pm 0.1742$	$1.0907 \pm 0.1742$	0.9636	0.1634	51.8941	0.0001
BE	TE				
<i>Hydrated</i>					
$\log k_{\text{AGP}}$					
$0.9042 \pm 0.1426$	–	0.9042	0.1043	40.3182	0.0001
V					
$\log k_{\text{IAM}}$					
$-0.9418 \pm 0.1121$	–	0.9418	0.1632	70.6113	0.0001
BE					
$\log k_{w7.4\text{Su}}$					
$-1.0316 \pm 0.0726$	$0.02163 \pm 0.0726$	0.9811	0.1769	102.6939	0.0001
BE	TDM				
$\log k_{w2.5\text{Sp}}$					
$-1.6752 \pm 0.1740$	$1.0896 \pm 0.1740$	0.9636	0.1633	51.9731	0.0001
BE	TE				

tolazoline (31), and mianserine (32) are compounds having a non-specific effects on  $\alpha$ -receptors, so it is possible that they may be partially mixed with a set of agonists, in presented work, they were marked with circle on Figs. 2, 3, 4, and 5 and pointed to the cluster with other antagonists.

In the next step, PCA and FA were performed for the same set of calculation in an aqueous medium. Comparing the obtained results, it was noted that the application of structural parameters calculated in terms of hydration has made no noticeable changes. Points corresponding to both variables and statistical cases were slightly shifted, however, the distribution of points unchanged and it was similar to the one presented in the discussion for the analysis of molecules calculated in vacuo (Figs. 4, 5).

It is difficult to determine whether the model based on the placing of the molecule in the present periodic box surrounded by water molecules with the creation of hydrogen bonds and the geometry optimization of the model is worse or better than the PCM, which consists in placing the particles presented in the environment, such as the dielectric constant of the solvent. On the other hand,

using PCM model additional parameters are calculated characterizing the system, but also very important is a total number of cases that can be clearly presented.

The  $\log k$ , chromatographic relationships for the structures of  $\alpha$ -adrenergic agonists and some antagonists optimized in vacuo and in the aquatic environment as the results of muliregression analysis are presented in Table 1. For the structures of  $\alpha$ -adrenergic agonists optimized in vacuo with the PCM method is presented in Table 2, and finally the activity relationships for the structures of  $\alpha$ -adrenergic agonists and antagonists optimized in vacuo and in aquatic environment are presented in Table 3.

According on the chromatographic relationships for the structures of  $\alpha$ -adrenergic agonists and some antagonists optimized in vacuo, they are characterized by the values of the regression coefficients  $R > 0.9$ . Relatively strong dependencies were obtained also for the columns serving as a models of biological systems (IAM, AGP),  $R \sim 0.94$  and  $\sim 0.9$ , respectively. Among the analyzed independent variables the most frequent appears BE and as the further parameter TE for the Spheri column,  $R \sim 0.96$ .



Additionally, for the AGP, molecular volume ( $V$ ) appears in column.

Between the chromatographic relationships for the structures of  $\alpha$ -adrenergic agonists and some antagonists optimized in aquatic environment, similar dependencies were observed. Furthermore, for the Suplex column, a second parameter appears the TDM with  $R \sim 0.98$ .

On the other hand, analyzing the relationships for the structures of only  $\alpha$ -adrenergic agonists,  $n = 8$ , optimized

in vacuo by PCM method in all cases the values of the regression coefficients  $R > 0.93$  with only one independent variable. The most frequent parameter appeared isotropic polarizability (IPOL),  $R \sim 0.94$  for the IAM column and  $R \sim 0.95$  for the Spheri column. However, for the Suplex and Aluspher columns appeared electronic spatial extent (ESE), with  $R \sim 0.97$  and  $\sim 0.93$ , respectively.

Analyzing the dependencies of  $\alpha$ -adrenergic agonists and  $\log P$  two independent variables appeared only as a statistically significant parameters in vacuo: MAX\_NEG and TDM, with the regression coefficient,  $R \sim 0.9$ , that could demonstrate the importance of bulkiness type parameters and associated dispersion interactions, to a lesser extent polar parameters.

For the antihypertensive activity of agonists (pC<sub>25</sub>) and a relatively not too large number of cases ( $n = 8$ ), relationship with only one the independent variable—the lowest energy unoccupied molecular orbital (E\_LUMO) with a regression coefficient value  $R \sim 0.87$  in vacuo and  $R \sim 0.88$  in the case of hydrated structures—was obtained.

For the biological activity of antagonists ( $n = 11$ ), statistically significant dependencies of pA<sub>2</sub> ( $\alpha_1$ ) in vivo and in vitro activity for the both hydrated and non-hydrated molecules were obtained. In the case of in vacuo structures with pA<sub>2</sub> ( $\alpha_1$ )<sub>in vivo</sub> as the first parameter appears HE and as the second the lowest energy unoccupied molecular orbital (E\_LUMO), with  $R \sim 0.89$ , while with pA<sub>2</sub> ( $\alpha_1$ )<sub>in vitro</sub> there is a the inverse order of the same parameters also with

**Table 2** The relationships for the structures of  $\alpha$ -adrenergic agonists optimized in vacuo; by PCM method; statistical parameters:  $R$ ,  $s$ ,  $F$  and  $P$  of regression equation  $\log k_{(\text{column})} = k_0 + k_1 \text{Descriptor}_1$ , where  $n = 8$

$k_1 \text{Descriptor}_1$	$R$	$s$	$F$	$P$
$\log k_{\text{IAM}}$				
$0.9420 \pm 0.1371$	0.9420	0.1271	47.2322	0.0005
IPOL				
$\log k_{w7.4\text{Su}}$				
$0.9714 \pm 0.0968$	0.9714	0.1499	100.6252	0.0001
ESE				
$\log k_{w2.5\text{Sp}}$				
$0.9527 \pm 0.1240$	0.9527	0.1994	59.0060	0.0002
IPOL				
$\log k_{w7.3\text{AI}}$				
$0.9295 \pm 0.1505$	0.9295	0.2286	38.1378	0.0008
ESE				

**Table 3** The activity relationships for the structures of  $\alpha$ -adrenergic antagonists and agonists optimized in vacuo and in aquatic environment; statistical parameters:  $R$ ,  $s$ ,  $F$  and  $P$  of regression equation:  $\text{pA}_2(\alpha_1)_{\text{in vivo}}/\text{pA}_2(\alpha_1)_{\text{in vitro}}/\text{pC}_{25} = k_0 + k_1 \text{Descriptor}_1 + k_2 \text{Descriptor}_2$

$k_1 \text{Descriptor}_1$	$k_2 \text{Descriptor}_2$	$R$	$s$	$F$	$P$
pA <sub>2</sub> ( $\alpha_1$ ) <sub>in vivo</sub> , in vacuo, $n = 11$					
$-0.6287 \pm 0.1622$	$-0.5189 \pm 0.1622$	0.8935	0.4463	15.8397	0.0016
HE	E_LUMO				
pA <sub>2</sub> ( $\alpha_1$ ) <sub>in vitro</sub> , in vacuo, $n = 11$					
$-0.6398 \pm 0.1674$	$-0.4957 \pm 0.1674$	0.8861	0.4808	14.6273	0.0021
E_LUMO	HE				
pA <sub>2</sub> ( $\alpha_1$ ) <sub>in vivo</sub> , hydrated, $n = 11$					
$-0.6089 \pm 0.1553$	$-0.5558 \pm 0.1553$	0.9026	0.4279	17.5874	0.0012
HE	E_LUMO				
pA <sub>2</sub> ( $\alpha_1$ ) <sub>in vitro</sub> , hydrated, $n = 11$					
$-0.8639 \pm 0.1575$	$0.4811 \pm 0.1575$	0.8998	0.4526	17.0163	0.0013
E_LUMO	HF				
pC <sub>25</sub> , in vacuo, $n = 8$					
$-0.8672 \pm 0.2033$	–	0.8672	0.4310	18.1891	0.0053
E_LUMO					
pC <sub>25</sub> , hydrated, $n = 8$					
$-0.8798 \pm 0.1941$	–	0.8798	0.4114	20.5463	0.0040
E_LUMO					

$R \sim 0.89$ . On the other hand, In the case of hydrated structures with  $pA_2 (\alpha_1)_{in vivo}$  as the first parameter appears again HE and as the second the lowest energy unoccupied molecular orbital (E\_LUMO), with  $R \sim 0.90$ , whereas with  $pA_2 (\alpha_1)_{in vitro}$  there is an inverse order of the same parameters also with  $R \sim 0.89$ , whereas as the first parameter appears the lowest energy unoccupied molecular orbital (E\_LUMO) and as the second the HF, with  $R \sim 0.90$ .

It can be concluded that for the parameters of the binding affinity of the receptor, a major role is played by E\_LUMO energy orbitals, which may indicate the nature of the interactions between the drug molecule and receptor.

It seems that the regression is mostly affected by the type of the dependent variable, and in fact the complexity of the phenomena affecting the measured value of this variable, as well as the uncertainty of measurement of the variable. The dependent variables—physicochemical parameters (such as chromatographic retention factors and hydrophobicity coefficients) probably have a smaller number of phenomena which influence its value than the biological parameters, and the uncertainty of their measurement seems to be smaller. The parameters characterizing the biological activity (authors assigned them in living organisms or living tissues) are more complex nature than the phenomenon of chromatographic retention processes, so often they may possess not so preferred statistical characteristics (i.e., accuracy and precision), which all results in a lower value of  $R$ .

## Concluding remarks

Based on the above discussion the following conclusions can be drawn.

Out of the considered 16 molecular parameters (quantum-chemical and QSAR), the greatest impact on the spatial distribution (and classification) have the average polarizability and molecular volume, followed by particle surface area and three type of energies electron, binding and total. On the other hand, it appears with smallest impact: the difference between the largest positive and negative charge, the largest positive charge on the atom, and the largest negative charge on the atom.

The greatest impact on the values of chromatographic retention has BE and sometimes TE or TDM; instead of PCM method it informs us about equally important influence of isotropic polarizability and electronic spatial extent.

Between the relationships together with the chromatographic parameters appear high values of the regression coefficient ( $R > 0.95$ ), sometimes even with one independent

variable—BE, which assumes the existence of dependency of a function type.

Not found, the significant effect of hydration (the calculation method for the structure of hydrated “periodic box”) for the statistical analysis (PCA, FA and MLR) in comparison to the results of the analysis for the structure optimized in vacuo.

Analyzing the relationships resulting from the correlation with parameters of biological activity, the most frequent dependence is that with the value of lowest energy unoccupied molecular orbital probably playing a crucial role as a result of the agonistic and antagonistic activity on the  $\alpha$ -adrenergic receptors. It seems to converge with the results on similar structures and effect on adrenoceptors (Eric *et al.*, 2004; Nikolic *et al.*, 2008) suggesting the meaning of HOMO energy orbitals. The importance of LUMO and HOMO energy orbitals for analyzed parameters characterizing the biological activity to  $\alpha_1$  and  $\alpha_2$  receptors indicates the importance of the electron-donor–acceptor interaction within the drug–receptor interactions.

**Conflict of interest** The authors confirm that this article content has no conflicts of interest.

**Open Access** This article is distributed under the terms of the Creative Commons Attribution License which permits any use, distribution, and reproduction in any medium, provided the original author(s) and the source are credited.

## References

- Bączek T (2006) Chemometric evaluation of relationships between retention and physicochemical parameters in terms of multidimensional liquid chromatography of peptides. *J Sep Sci* 29:547–554
- Balogh B, Jójart B, Wagner Z, Kovacs P, Mate G, Gyires K, Zadori Z, Falkay G, Marki A, Viskolcz B (2007) 3D QSAR models for  $\alpha_2$ -adrenoceptor agonists. *Neurochem Int* 51:268–276
- Balogh B, Szilagyí A, Gyires K, Bylund DB, Matyus P (2009) Molecular modelling of subtypes ( $\alpha_{2A}$ ,  $\alpha_{2B}$  and  $\alpha_{2C}$ ) of  $\alpha_2$ -adrenoceptors: a comparative study. *Neurochem Int* 55:355–361
- Bober L, Kawczak P, Bączek T (2012a) Pharmacological classification and activity evaluation of furan and thiophene amide derivatives applying semi-empirical ab initio molecular modeling methods. *Int J Mol Sci* 13:6665–6678
- Bober L, Kawczak P, Bączek T (2012b) QSAR analysis of compounds exhibiting general anesthetics' properties. *Lett Drug Des Discov* 9:595–603
- Bodzioch K, Durand A, Kaliszan R, Bączek T, Vander Heyden Y (2010) Advanced QSRR modeling of peptides behavior in RPLC. *Talanta* 81:1711–1718
- Caricato M, Scalmani G (2011) On the importance of the orbital relaxation in ground-state coupled cluster calculations in solution with the polarizable continuum model of solvation. *J Chem Theory Comput* 7:4012–4018
- Eric S, Solmajer T, Zupan J, Novic M, Oblak M, Agbaba D (2004) Quantitative structure–activity relationships of  $\alpha_1$  adrenergic antagonists. *J Mol Model* 10:139–150

- Fitzpatrick D, Purves D, Augustine G (2004) Neuroscience, 3rd edn. Sunderland, Massachusetts
- HyperChem<sup>®</sup> Computational Chemistry (1996) Part 1: Practical guide. Part 2: Theory and methods. Hypercube Inc., Waterloo
- Nasal A, Buciniński A, Bober L, Kaliszan R (1997) Prediction of pharmacological classification by means of chromatographic parameters processed by principal component analysis. *Int J Pharm* 159:43–55
- Nikolic K, Filipic S, Agbaba D (2008) QSAR study of imidazoline antihypertensive drugs. *Bioorg Med Chem* 16:7134–7140
- Official Gaussian Website. <http://www.gaussian.com/>. Accessed 1 April 2014
- Robinson E, Hudson A (1998) Adrenoceptor pharmacology. *Toxicol Rev* 8:1–6
- Schmitz JM, Graham RM, Sagalowsky A, Pettinger WA (1981) Renal  $\alpha_1$  and  $\alpha_2$ -adrenergic receptors: biochemical and pharmacological correlations. *J Pharmacol Exp Ther* 219:400–406
- Timmermans PBMWM, Van Zwieten PA (1982)  $\alpha_2$ -Adrenoceptors: classification, localization, mechanisms, and targets for drugs. *J Med Chem* 25:1389–1401
- Timmermans PBMWMA, De Jonge A, Van Meel JCA, Slothorst-Grisdijk FP, Lam E, Van Zwieten PA (1981) Characterization of  $\alpha$ -adrenoceptor populations. Quantitative relationships between cardiovascular effects initiated at central and peripheral  $\alpha$ -adrenoceptors. *J Med Chem* 24:502–507
- Timmermans PBMWMA, De Jonge A, Thoolen MJMC, Wilffert B, Batink H, Van Zwieten PA (1984) Quantitative relationships between  $\alpha$ -adrenergic activity and binding affinity of  $\alpha$ -adrenoceptor agonists and antagonists. *J Med Chem* 27:495–503
- Tomasi J, Persico M (1994) Molecular interactions in solution: an overview of methods based on continuous distributions of the solvent. *Chem Rev* 94:2027–2094
- Tomasi J, Mennucci B, Cammi R (2005) Quantum mechanical continuum solvation models. *Chem Rev* 105:2999–3093
- Yadav M, Joshi S, Nayariseri A, Jain A, Hussain A, Dubey T (2013) Global QSAR modeling of logP values of phenethylamines acting as adrenergic alpha-1 receptor agonists. *Interdiscip Sci Comput Life Sci* 5:150–154
- Zhao X, Chen M, Huang B, Ji H, Yuan M (2011) Comparative molecular field analysis (CoMFA) and comparative molecular similarity indices analysis (CoMSIA) studies on  $\alpha_{1A}$ -adrenergic receptor antagonists based on pharmacophore molecular alignment. *Int J Mol Sci* 12:7022–7037