



# Triglyceride to HDL-Cholesterol Ratio and the Incident Risk of Ischemic Heart Disease Among Koreans Without Diabetes: A Longitudinal Study Using National Health Insurance Data

## OPEN ACCESS

### Edited by:

Masahide Hamaguchi,  
Kyoto Prefectural University of  
Medicine, Japan

### Reviewed by:

Noriyuki Kitagawa,  
Kameoka Municipal Hospital, Japan  
Christoph Sinning,  
University Heart and Vascular Center  
Hamburg (UHZ), Germany  
Takafumi Osaka,  
Kyoto Prefectural University, Japan

### \*Correspondence:

Yong Jae Lee  
ukyhome@yuhs.ac

<sup>†</sup>These authors have contributed  
equally to this work

### Specialty section:

This article was submitted to  
Cardiovascular Epidemiology and  
Prevention,  
a section of the journal  
Frontiers in Cardiovascular Medicine

**Received:** 29 May 2021

**Accepted:** 27 July 2021

**Published:** 17 August 2021

### Citation:

Park B, Jung DH, Lee HS and Lee YJ  
(2021) Triglyceride to HDL-Cholesterol  
Ratio and the Incident Risk of  
Ischemic Heart Disease Among  
Koreans Without Diabetes: A  
Longitudinal Study Using National  
Health Insurance Data.  
*Front. Cardiovasc. Med.* 8:716698.  
doi: 10.3389/fcvm.2021.716698

Byoungjin Park<sup>1,2†</sup>, Dong Hyuk Jung<sup>1,2†</sup>, Hye Sun Lee<sup>3</sup> and Yong Jae Lee<sup>2,4\*</sup>

<sup>1</sup> Department of Family Medicine, Yongin Severance Hospital, Seoul, South Korea, <sup>2</sup> Department of Family Medicine, Yonsei University College of Medicine, Seoul, South Korea, <sup>3</sup> Biostatistics Collaboration Unit, Department of Research Affairs, Yonsei University College of Medicine, Seoul, South Korea, <sup>4</sup> Department of Family Medicine, Gangnam Severance Hospital, Seoul, South Korea

**Background:** Early insulin resistance without diabetes can cause cardiovascular disease, which is a public health challenge. This study aimed to investigate the effects of the triglyceride to high-density lipid (HDL)-cholesterol ratio (TG/HDL-C), which could reflect insulin resistance from the beginning, on the incident risk of ischemic heart disease (IHD).

**Methods:** We assessed 16,455 individuals (8,426 men and 8,029 women) without diabetes in a community-dwelling Korean cohort using National Health Insurance data. Participants were classified based on the TG/HDL-C quartiles. Using multivariate Cox proportional-hazards regression models, we prospectively examined the hazard ratios (HRs) with 95% confidence intervals (CIs) for IHD over 50 months after baseline enrolment.

**Results:** During the follow-up period, 321 (2.0%) participants developed IHD. After adjusting for potential confounding variables, the HRs of IHD for TG/HDL-C quartiles were 1.00, 1.61 (95% CI, 1.05–2.48), 1.85 (95% CI, 1.21–2.81), and 2.29 (95% CI, 1.50–3.51), respectively. Compared with men, women showed higher HRs for the risk of incident IHD in the fourth quartile [HR (95% CI) = 2.98 [1.50–5.88] and 1.80 [1.02–3.17], respectively). Compared with metabolic syndrome, TG/HDL-C had a more powerful predictive value for IHD.

**Conclusions:** In Koreans without diabetes, an increased TG/HDL-C precedes future IHD. Additionally, sex differences may merit serious consideration when interpreting TG/HDL-C for assessing cardiovascular risks in clinical practice.

**Keywords:** triglyceride to HDL-cholesterol ratio, cardiometabolic risk, insulin resistance, ischemic heart disease, cohort study

## INTRODUCTION

Ischemic heart disease (IHD) is a significant challenge among middle-aged individuals without diabetes. From an epidemiological perspective, patients without diabetes who have IHD can have a poorer prognosis than patients with diabetes (1–3). There may be a significant decline in insulin sensitivity over approximately 5 years as a natural course of  $\beta$ -cell function, even among individuals with normal glucose tolerance or in a pre-diabetic state (4). Additionally, coronary heart disease can begin in early-stage insulin resistance (5), which may be overlooked in clinical settings. Therefore, management of IHD risk factors in the preclinical stage is important from a public health perspective, which facilitates disease prevention and delays IHD progression.

Individuals with early insulin resistance often have increased and decreased triglyceride (TG) and high-density lipoprotein cholesterol (HDL-C) levels, respectively (6). Epidemiological studies have reported the predictive utility of the TG to HDL-C ratio (TG/HDL-C) for type 2 diabetes, which suggests that it is a simple and more accessible marker of insulin resistance from onset compared with homeostasis model assessment of insulin resistance or hyperinsulinemic-euglycemic clamp testing (7–9). Furthermore, TG/HDL-C is closely associated with small dense low-density lipoprotein cholesterol (LDL-C) levels, which have atherogenic properties (10, 11).

A recent study reported that a higher TG/HDL-C ratio is associated with the subclinical burden of coronary atherosclerosis (12). Previous prospective studies have primarily focused on cardiovascular mortality or individuals with some cardiovascular risks (13–16). Additionally, sex differences in these relationships remain unclear. This prospective study aimed to investigate the relationship between the TG/HDL-C ratio and incident IHD in a large-scale, community-dwelling, Korean cohort without diabetes, using National Health Insurance Service data.

## MATERIALS AND METHODS

### Study Design and Participants

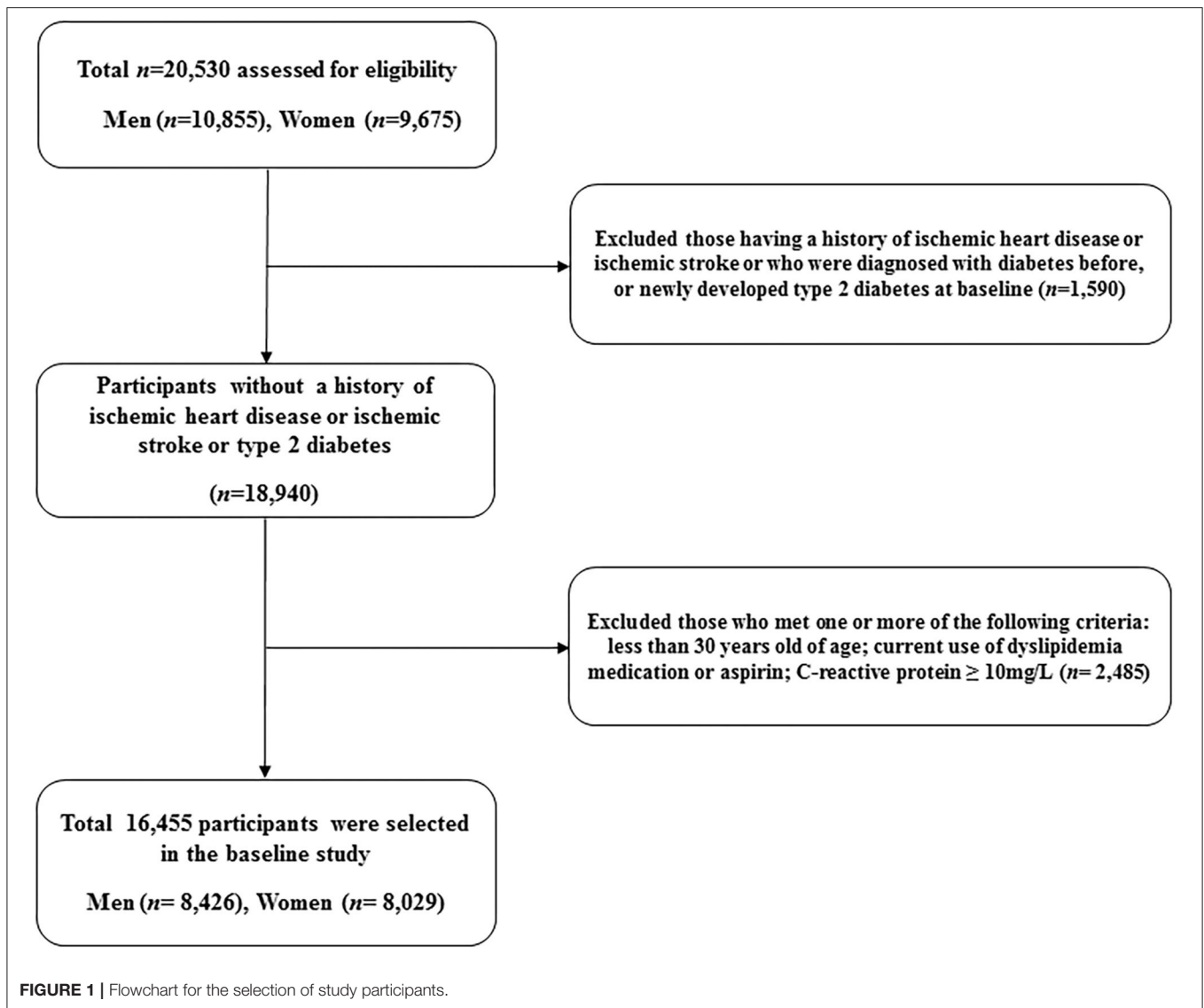
This study is a derivative of the Health Risk Assessment Study (HERAS), which was designed to identify and explore surrogate indicators for cardiometabolic diseases among Korean adults (17, 18). The HERAS cohort is comprised of 20,530 participants who sequentially visited the Health Promotion Center, Yonsei University Gangnam Severance Hospital, for health examination between November 1, 2006, and June 8, 2010. Among the participants identified at baseline, we excluded 1,590 individuals previously diagnosed with angina pectoris, myocardial infarction, ischemic stroke, diabetes mellitus, or newly developed type 2 diabetes (defined as a fasting plasma glucose level  $\geq 126$  mg/dl). Additionally, we excluded participants according to the following criteria: aged  $< 30$  years, current use of dyslipidemia medication or aspirin, and high-sensitivity C-reactive protein (hsCRP) level  $\geq 10$  mg/L ( $n = 2,485$ ). Consequently, 16,455 individuals were included in the final analysis (Figure 1).

## Data Collection

Each participant completed a lifestyle behavior and medical history questionnaire, which included information regarding cigarette smoking, alcohol intake, and physical activity. Smoking status was defined using the following categories: non-smoker, ex-smoker, and current smoker. Regular alcohol intake was defined as an alcohol consumption rate of  $\geq 140$  g/week. Regular exercise was defined as moderate physical activity  $\geq$  thrice per week. Bodyweight and height were measured to the nearest 0.1 kg and 0.1 cm, respectively, in light indoor clothing without footwear. The body mass index was calculated as the weight in kilograms divided by the square of the height in meters ( $\text{kg}/\text{m}^2$ ). Systolic and diastolic blood pressures were measured on the patient's right arm using a standard mercury sphygmomanometer in the sitting position after 10 min of rest (Baumanometer, W.A. Baum Co., Inc., Copiague, NY, USA). The mean arterial pressure was calculated from the systolic and diastolic blood pressures and weighted as 1/3 systolic and 2/3 diastolic blood pressure (19). Blood samples were obtained from the antecubital vein after overnight 12-h fasting. Fasting plasma glucose, total cholesterol, triglyceride, and HDL-C levels were measured through enzymatic methods using a Hitachi 7,600 automated chemistry analyzer (Hitachi Co., Tokyo, Japan). Serum hsCRP levels were measured with a Roche/Hitachi 912 System using a latex-enhanced immunoturbidimetric method (Roche Diagnostics, Indianapolis, IN, USA). Hypertension was defined as a systolic and diastolic blood pressure  $\geq 140$  and  $\geq 90$  mmHg, respectively, or current hypertension medication use (20). Impaired fasting glucose was defined as a fasting plasma glucose level of 100–126 mg/dl (21). Metabolic syndrome was defined using the modified National Cholesterol Education Program Adult Treatment Panel III. Since we did not measure the waist circumference, obesity was defined as BMI  $\geq 25$   $\text{kg}/\text{m}^2$ , as suggested by the position statement of the American College of Endocrinology (22). Metabolic syndrome was defined as the presence of  $\geq 3$  of the following risk factors: obesity with BMI  $\geq 25.0$   $\text{kg}/\text{m}^2$ , elevated systolic blood pressure  $\geq 130$  mmHg, elevated diastolic blood pressure  $\geq 85$  mmHg, or using an antihypertensive medication; high fasting plasma glucose levels  $\geq 100$  mg/dl or using diabetes medication; triglyceride levels  $\geq 150$  mg/dl; and HDL cholesterol levels  $< 40$  mg/dl and  $< 50$  mg/dl for men and women, respectively. TG/HDL-C was calculated as TG (mg/dl) divided by HDL-C level (mg/dl). TG/HDL-C values were categorized into quartiles as follows: Q1 ( $\leq 1.25$ ), Q2 (1.26–1.98), Q3 (1.99–3.24), and Q4 ( $\geq 3.25$ ).

## Study Outcomes

The primary outcome was IHD, which comprised of angina pectoris (ICD-10 code I20) or acute myocardial infarction (ICD-10 code I21) occurring after study enrolment (17, 18). To define baseline and post-survey outcomes, we linked a personal 13-digit identification number for each participant that was assigned using the Health Insurance Review and Assessment Data (HIRA) in Korea, which is a repository of claims data collected while reimbursing healthcare providers, from November 1, 2006, to December 31, 2010.



## Statistical Analysis

Baseline characteristics were compared among the TG/HDL-C quartiles using analysis of variance (ANOVA) and the chi-squared test for continuous and categorical variables, respectively. Moreover, we performed sex-based comparisons of the clinical and biochemical characteristics using independent two-sample *t*-tests and a chi-square test. Kaplan–Meier curves were used to assess the cumulative incidence of IHD. The log-rank test was used for among-group comparisons of the distribution of the cumulative IHD incidence. In multivariate analysis, after setting the lowest TG/HDL-C quartile as a reference group, the hazard ratios (HRs) and 95% confidence intervals (CIs) for incident IHD were calculated using the Cox proportional hazards regression model after adjusting for potential confounding variables. Pairwise comparisons of receiver-operating characteristic (ROC) curves were used to compare the areas under ROC curves (AUC) for IHD incidence

based on TG/HDL-C, presence of metabolic syndrome, and the number of metabolic syndrome components. Furthermore, we used AUC values to test the sensitivity and specificity of the biomarkers for predicting IHD. All statistical analyses were performed using SAS version 9.4 software (; SAS Institute Inc., Cary, NC, USA) and all statistical tests were two-sided. Statistical significance was set at  $p < 0.05$ .

## RESULTS

### Baseline Characteristics of the Study Population

**Table 1** shows the baseline characteristics of the study population ( $n = 16,455$ ; 8,426 men and 8,029 women) based on the TG/HDL-C quartiles. The mean age, BMI, TG levels, HDL-C levels, and TG/HDL-C were  $46.1 \pm 9.5$  years,  $23.4 \pm 3.0$  kg/m<sup>2</sup>,  $124.2 \pm 84.9$ ,  $53.2 \pm 12.6$ , and  $2.64 \pm 2.42$  mg/dl, respectively.

**TABLE 1** | Baseline characteristics of the study population according to the TG/HDL-C quartiles.

Characteristics	TG/HDL-C quartiles					P-value <sup>a</sup>	Post-hoc <sup>b</sup>
	Overall (n = 16,455)	Q1 (n = 4,112)	Q2 (n = 4,147)	Q3 (n = 4,081)	Q4 (n = 4,115)		
TG/HDL-C	2.64 ± 2.42	≤1.25	1.26–1.98	1.99–3.24	≥ 3.25		
Age (years)	46.1 ± 9.5	44.4 ± 9.2	46.3 ± 9.5	47.0 ± 9.5	46.6 ± 9.6	<0.001	a,b,c,d
Male sex (%)	51.2	24.8	43.0	61.2	76.0	<0.001	-
Body mass index (kg/m <sup>2</sup> )	23.4 ± 3.0	21.5 ± 2.5	22.8 ± 2.7	24.1 ± 2.8	25.1 ± 2.7	<0.001	a,b,c,d,e,f
Systolic blood pressure (mmHg)	121.9 ± 15.5	115.8 ± 14.5	120.1 ± 15.1	124.2 ± 15.0	127.7 ± 14.7	<0.001	a,b,c,d,e,f
Diastolic blood pressure (mmHg)	76.2 ± 10.1	72.1 ± 9.4	75.0 ± 9.7	77.7 ± 9.8	80.1 ± 9.6	<0.001	a,b,c,d,e,f
Fasting plasma glucose (mg/dl)	91.4 ± 9.8	87.8 ± 8.8	90.5 ± 8.9	92.7 ± 9.6	94.7 ± 10.3	<0.001	a,b,c,d,e,f
Total cholesterol (mg/dl)	190.3 ± 33.3	181.7 ± 30.7	185.8 ± 31.5	194.0 ± 33.0	199.6 ± 34.9	<0.001	a,b,c,d,e,f
Triglyceride (mg/dl)	124.2 ± 84.9	60.6 ± 13.1	87.9 ± 16.4	123.3 ± 23.8	225.2 ± 110.8	<0.001	a,b,c,d,e,f
HDL-cholesterol (mg/dl)	53.2 ± 12.6	66.0 ± 11.3	55.5 ± 9.2	49.2 ± 8.1	42.1 ± 7.1	<0.001	a,b,c,d,e,f
C-reactive protein (mg/L)	1.0 ± 1.3	0.7 ± 1.1	0.9 ± 1.3	1.2 ± 1.4	1.4 ± 1.5	<<0.001	a,b,c,d,e,f
Current smoker (%)	24.7	10.2	18.6	28.8	40.9	<0.001	-
Alcohol drinking (%)	43.3	35.0	40.0	45.9	52.4	<0.001	-
Regular exercise (%)	30.9	33.5	33.8	30.1	26.3	<0.001	-
Hypertension (%)	20.3	10.9	16.1	23.7	30.7	<0.001	-
Impaired fasting glucose (%)	18.0	12.0	19.7	29.3	39.1	<0.001	-
Metabolic syndrome (%)	12.1	0.6	2.4	8.0	37.5	<0.001	-

<sup>a</sup>P-values were calculated using 1-way ANOVA or Pearson's chi-square test.

<sup>b</sup>Post-hoc analysis with the Bonferroni method: a, Q1 vs. Q2; b, Q1 vs. Q3; c, Q1 vs. Q4; d, Q2 vs. Q3; e, Q2 vs. Q4; and f, Q3 vs. Q4.

**TABLE 2** | Clinical and biochemical characteristics according to sex.

	Men (n = 8,426)	Women (n = 8,029)	P-value*
TG/HDL-C	3.33 ± 2.91	1.91 ± 1.44	<0.001
Age (years)	45.9 ± 9.5	46.2 ± 9.5	0.037
Body mass index (kg/m <sup>2</sup> )	24.3 ± 2.8	22.4 ± 2.9	<0.001
Systolic blood pressure (mmHg)	126.3 ± 14.3	117.4 ± 15.4	<0.001
Diastolic blood pressure (mmHg)	79.4 ± 9.4	72.9 ± 9.7	<0.001
Mean arterial pressure (mmHg)	95.0 ± 10.7	87.7 ± 11.2	<0.001
Fasting plasma glucose (mg/dl)	93.5 ± 9.9	89.3 ± 9.2	<0.001
Total cholesterol (mg/dl)	192.4 ± 32.8	188.0 ± 33.7	<0.001
Triglyceride (mg/dl)	147.9 ± 100.0	99.3 ± 55.4	<0.001
HDL-cholesterol (mg/dl)	49.0 ± 11.0	57.7 ± 12.7	<0.001
C-reactive protein (mg/L)	1.2 ± 1.4	0.9 ± 1.2	<0.001
Current smoker (%)	42.2	5.5	<0.001
Alcohol drinking (%)	60.5	49.9	<0.001
Regular exercise (%)	32.0	29.8	0.002
Hypertension (%)	26.1	14.3	<0.001
Impaired fasting glucose (%)	23.6	12.1	<0.001
Metabolic syndrome (%)	13.0	11.1	<0.001

\*p values were calculated using an independent two-sample t-test or Pearson's chi-squared tests.

The group with the highest TG/HDL-C quartile showed the highest mean values of BMI, mean arterial pressure, fasting plasma glucose, total cholesterol, and hsCRP levels, as well as the lowest mean HDL-C levels. Moreover, this group showed the

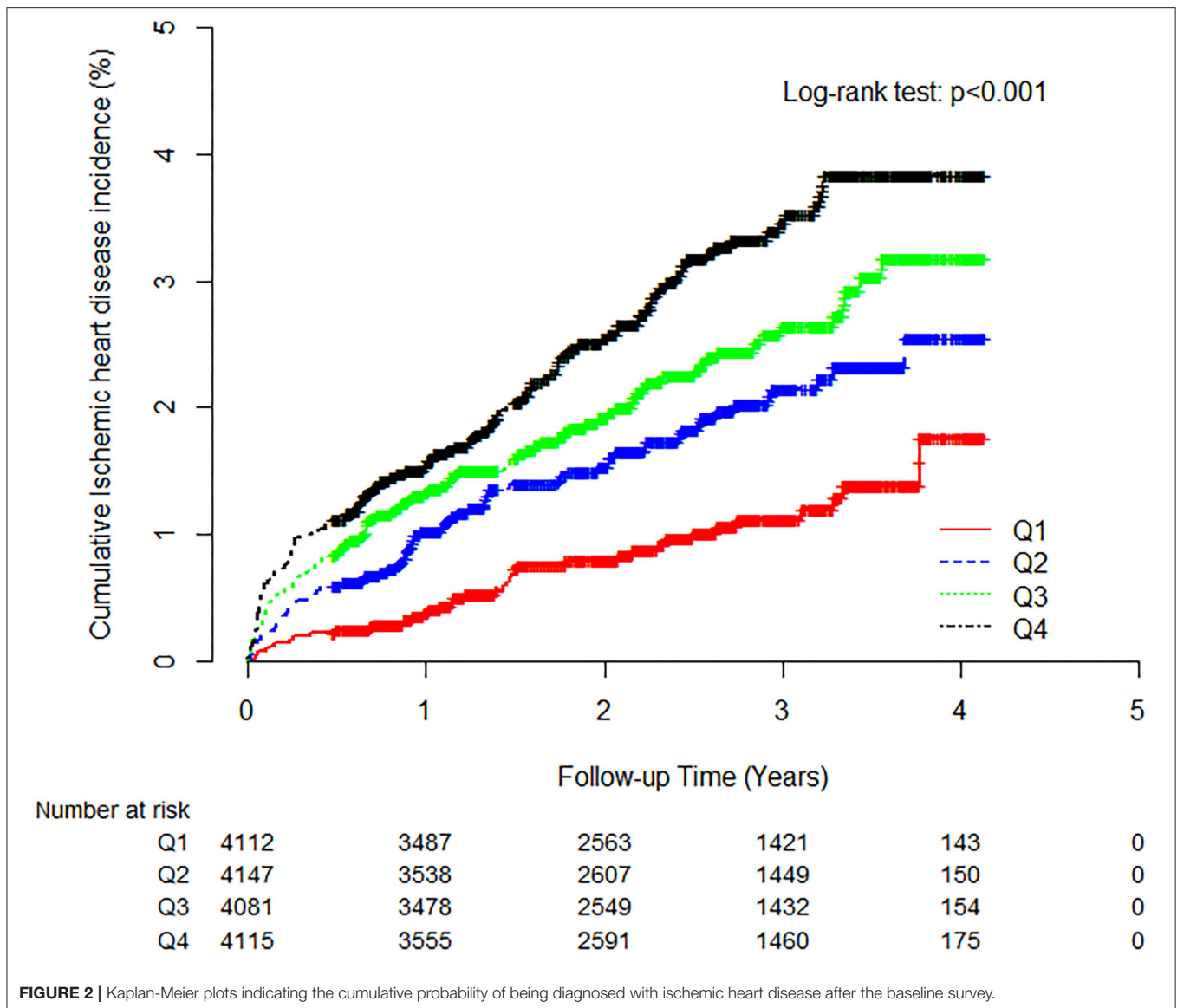
highest proportions of current smokers and alcohol drinkers, as well as the lowest proportion of individuals involved in regular exercise. The prevalence of hypertension, impaired fasting glucose, and metabolic syndrome were 20.3, 18.0, and 12.1%, respectively, which gradually increased according to TG/HDL-C quartiles. There was no sex difference in the age distribution; however, men showed a higher TG/HDL-C than women (3.33 ± 2.91 vs. 1.91 ± 1.44; **Table 2**).

## Cumulative Ischemic Heart Disease Incidence

During the follow-up period, 321 (2.0%, 321/16,455) individuals developed IHD. The IHD incidence rate (per 1,000 person-years) was positively correlated with the TG/HDL-C quartiles. The higher TG/HDL-C groups showed a significantly increased cumulative IHD incidence over 50 months following the baseline survey (log-rank test,  $P < 0.001$ ) (**Figure 2**).

## Hazard Ratios for Incident Ischemic Heart Diseases

**Tables 3, 4** show the results of the Cox proportional hazards regression analysis for predicting IHD based on the TG/HDL-C quartiles. Compared with the reference first TG/HDL-C quartile, the HRs of incident IHD for the second, third, and fourth quartiles increased in a dose-dependent manner. The HRs for incident IHD were 1.64 (95% CI, 1.07–2.52), 1.85 (95% CI, 1.21–2.83), and 2.35 (95% CI, 1.53–3.60) in the second, third and fourth TG/HDL-C quartiles, respectively, after adjusting for age, sex, BMI, smoking status, alcohol intake, and physical activity. Similarly, these longitudinal positive associations were



**FIGURE 2** | Kaplan-Meier plots indicating the cumulative probability of being diagnosed with ischemic heart disease after the baseline survey.

observed after additionally adjusting for systolic blood pressure, diastolic blood pressure, fasting plasma glucose, hsCRP levels, and hypertension medication. The corresponding adjusted HR for the highest vs. lowest TG/HDL-C quartile was 2.26 (95% CI, 1.47–3.48). Sex-based subgroup analysis revealed that the HRs of incident IHD for the fourth quartile were higher in women than in men [HR (95% CI) = 2.98 [1.51–5.89] and 1.81 [1.03–3.20], respectively) (Model 3, **Figure 3**).

### Pairwise Comparison With Metabolic Syndrome Parameters

Pairwise comparison of receiver operating characteristic (ROC) analysis for incident IHD revealed that the AUC of TG/HDL-C was significantly higher than that of metabolic syndrome ( $P < 0.001$ ), which was similar to that of the number of metabolic syndrome components ( $P = 0.929$ ). In the longitudinal model,

the AUC, sensitivity, and specificity of TG/HDL-C were 0.607, 64.2, and 52.1%, respectively (**Table 5**).

## DISCUSSION

This large-scale cohort study on community-dwelling Koreans without diabetes over a 50-month period found that higher TG/HDL-C values were associated with IHD incidence, which remained after adjustment for lifestyle factors, inflammation, and hypertension medication. Moreover, compared with metabolic syndrome, TG/HDL-C had a more powerful predictive value for IHD.

The association between TG/HDL-C and incident IHD was more prominent in women than in men. Additionally, the HRs of incident IHD in women significantly increased according to the TG/HDL-C quartiles; contrastingly, those in men did not

**TABLE 3** | Univariate and multivariate Cox proportional-hazards regression models for incident ischemic heart disease.

Variables	Univariate			Multivariate		
	HRs	95% CIs	P-value	HRs	95% CIs	P-value
Age, years	1.07	1.06–1.08	<0.001	1.06	1.04–1.07	<0.001
Male sex, yes or no	1.60	1.28–2.01	<0.001	1.50	1.06–2.12	0.023
Body mass index, kg/m <sup>2</sup>	1.09	1.05–1.13	<0.001	1.03	0.98–1.08	0.249
Current smoking, yes or no	1.15	0.86–1.55	0.338	1.04	0.72–1.51	0.840
Alcohol drinking, yes or no	0.76	0.60–0.96	0.019	0.77	0.59–1.00	0.047
Regular exercise, yes or no	1.43	1.13–1.80	0.002	1.19	0.94–1.52	0.151
Systolic blood pressure, mmHg	1.02	1.01–1.02	<0.001	1.00	0.99–1.02	0.885
Diastolic blood pressure, mmHg	1.02	1.01–1.03	<0.001	0.99	0.97–1.02	0.501
Fasting plasma glucose, mg/dl	1.03	1.02–1.04	<0.001	1.01	1.00–1.02	0.048
C-reactive protein, mg/L	1.07	1.00–1.15	0.052	0.94	0.86–1.03	0.213
Hypertension medication, yes or no	3.22	2.44–4.24	<0.001	1.83	1.34–2.49	<0.001
TG/HDL-C quartiles, Q1 vs. Q4	2.99	2.08–4.29	<0.001	2.26	1.47–3.48	<0.001

**TABLE 4** | Hazard ratios and 95% confidence intervals for new-onset ischemic heart diseases according to TG/HDL-C quartiles.

	TG/HDL-C quartiles				P for trend
	Q1	Q2	Q3	Q4	
New cases of ischemic heart disease, n	39	73	91	118	
Mean follow-up, years	2.4 ± 1.1	2.4 ± 1.1	2.4 ± 1.1	2.4 ± 1.1	
Pearson-years of follow-up	9,682	9,834	9,676	9,839	
Incidence rate/1,000 person –years	4.0	7.4	9.4	12.0	
Model 1	1.00 (reference)	1.64 (1.07–2.52)	1.85 (1.21–2.83)	2.35 (1.53–3.60)	0.001
Men	1.00 (reference)	1.41 (0.79–2.54)	1.55 (0.88–2.74)	1.89 (1.07–3.32)	0.137
Women	1.00 (reference)	1.85 (0.99–3.45)	2.14 (1.12–4.12)	2.98 (1.52–5.84)	0.017
Model 2	1.00 (reference)	1.63 (1.06–2.50)	1.82 (1.19–2.79)	2.30 (1.49–3.53)	0.002
Men	1.00 (reference)	1.41 (0.78–2.54)	1.55 (0.88–2.74)	1.86 (1.05–3.28)	0.164
Women	1.00 (reference)	1.85 (0.99–3.45)	2.10 (1.09–4.05)	2.95 (1.50–5.82)	0.020
Model 3	1.00 (reference)	1.63 (1.07–2.51)	1.82 (1.19–2.79)	2.26 (1.47–3.48)	0.003
Men	1.00 (reference)	1.42 (0.79–2.56)	1.54 (0.87–2.72)	1.81 (1.03–3.20)	0.209
Women	1.00 (reference)	1.86 (0.99–3.47)	2.13 (1.10–4.09)	2.98 (1.51–5.89)	0.019

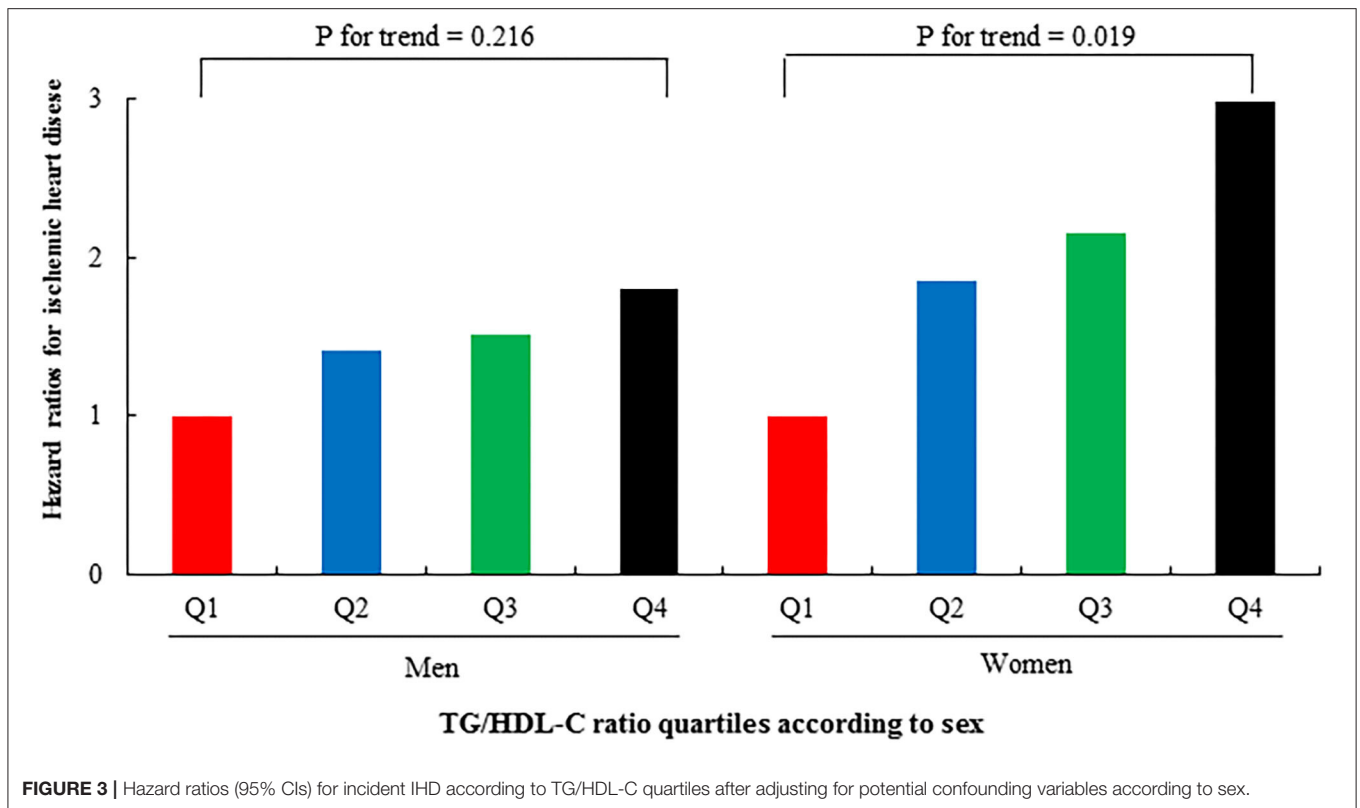
Model 1: adjusted for age, sex, body mass index, smoking status, alcohol intake, and physical activity.

Model 2: adjusted for age, sex, body mass index, smoking status, alcohol intake, physical activity, systolic blood pressure, diastolic blood pressure, fasting plasma glucose, and high sensitivity C-reactive protein.

Model 3: adjusted for age, sex, body mass index, smoking status, alcohol intake, physical activity, systolic blood pressure, diastolic blood pressure, fasting plasma glucose, high sensitivity C-reactive protein, and hypertension medication.

exhibit significant trends. Cheng et al. conducted a prospective study on 11,946 Chinese individuals without diabetes found that the risk for type 2 diabetes increased by approximately 30% with 1-unit of the TG/HDL-C increment (8). Moreover, they observed a clearer dose-response relationship in women than in men. Regarding cardiovascular disease (CVD), studies conducted in men and women separately have established this relationship. Hadaegh et al. (23) showed that Iranian men in the highest TG/HDL-C quartile had a 1.75-fold higher risk of coronary heart disease over a median follow-up period of 6.5 years compared with the reference low quartile. Another longitudinal study conducted by Bittner et al. reported a positive relationship between the TG/HDL-C and suspected CVD mortality in 554 US women over a median period of

6 years (16). The former and latter studies on men and women, respectively, reported a fourth quartile cut point of 6.9 and 2.8, respectively. Recent studies on TG/HDL-C have reported that it is associated with long-term mortality in high-risk individuals who have undergone percutaneous coronary angiography (24), as well as the relevance of subclinical coronary arterial calcification in low-risk individuals without diabetes (12). However, these studies did not address sex differences. Another study reported that TG/HDL-C, but not the LDL-C to HDL-C ratio, in women has a significant predictive value for CVD in a population-based cross-sectional study, unlike in men (25). Therefore, it may be advantageous for assessing and managing TG/HDL-C differently in men and women.



**TABLE 5 |** TG/HDL-C vs. metabolic syndrome and the number of metabolic syndrome components for predicting ischemic heart disease.

	Pairwise comparison of AUC			Classifying ability for ischemic heart disease			
	Difference	95% CI	P-value	Sensitivity (%)	Specificity (%)	AUC	P-value
TG/HDL-C vs. metabolic syndrome	0.059	0.031 to 0.087	<0.001				
TG/HDL-C vs. the number of metabolic syndrome components	0.001	-0.025 to 0.027	0.929				
The number of metabolic syndrome components vs. metabolic syndrome	0.064	0.037 to 0.083	<0.001				
TG/HDL-C				64.2	52.1	0.607	<0.001
Metabolic syndrome				21.5	88.1	0.548	<0.001
The number of metabolic syndrome components				79.1	37.4	0.608	<0.001

AUC, area under the receiver operating characteristic curve.

There was a noticeable increase and decrease in TG and HDL-C, respectively, with insulin resistance progression; moreover, the TG/HDL-C ratio is useful for assessing early insulin resistance (6, 26). High TG and low HDL-C are the two most common lipid abnormalities among Korean adults aged > 20 years, with a prevalence of approximately 28.7 and 41.2%, respectively (27). The Korea National Health and Nutrition Examination Survey indicated an increase in both high TG and low HDL-C by > 30% in 2010 compared with 2007. In the United States, ~30 and 40% of adult men /women in their 20's and 30's, respectively, have high TG and/or

low HDL-C (28). Individuals with insulin resistance are more susceptible to atherosclerosis; moreover, coronary arterial disease can develop and progress from early insulin resistance (5, 29). The atherogenic link between TG/HDL-C and IHD, besides insulin resistance, is associated with the generation of small, dense LDL particles, which can cause vascular compromise (10, 30, 31). The NCEP guidelines for metabolic syndrome indicate well-established sex differences in the HDL-C level (32). In the same context, the TG/HDL-C ratio was significantly higher in men; however, its association with IHD was more pronounced in women.

A major strength of our study was that this was a longitudinal large-scale study linked to HIRA data, which are based on the universal coverage system in Korea. This decreases the chance of missing data. This study has several limitations. First, given that the study cohort comprised volunteers for health promotion screenings conducted at a single hospital, the participants could have been slightly healthier than the general Korean population. Moreover, some confounding variables, including dietary data and traditional insulin resistance markers, may have not been initially assessed. Second, some individuals with diabetes may have been included in the final analysis since glycated hemoglobin A1c assessment and oral glucose tolerance tests were not performed at the beginning of the study.

## CONCLUSIONS

An increased TG/HDL-C ratio precedes and significantly predicts future IHD among community-dwelling Koreans. Moreover, compared with metabolic syndrome, the TG/HDL-C was a more powerful predictive indicator of IHD. Additionally, there is a need to consider sex differences when interpreting TG/HDL-C, even among individuals without diabetes. A high TG/HDL-C ratio may be a useful indicator for assessing the CVD risk in adults at the preclinical stage.

## REFERENCES

- Lee CD, Folsom AR, Pankow JS, Brancati FL. Cardiovascular events in diabetic and non-diabetic adults with or without history of myocardial infarction. *Circulation*. (2004) 109:855–60. doi: 10.1161/01.CIR.0000116389.61864.DE
- Cho E, Rimm EB, Stampfer MJ, Willett WC, Hu FB. The impact of diabetes mellitus and prior myocardial infarction on mortality from all causes and from coronary heart disease in men. *J Am Coll Cardiol*. (2002) 40:954–60. doi: 10.1016/S0735-1097(02)0244-2
- Hu FB, Stampfer MJ, Solomon CG, Liu S, Willett WC, Speizer FE, et al. The impact of diabetes mellitus on mortality from all causes and coronary heart disease in women: 20 years of follow-up. *Arch Intern Med*. (2001) 161:1717–23. doi: 10.1001/archinte.161.14.1717
- Festa A, Williams K, D'Agostino R, Wagenknecht LE, Haffner SM. The natural course of  $\beta$ -cell function in non-diabetic and diabetic individuals: the Insulin Resistance Atherosclerosis Study. *Diabetes*. (2006) 55:1114–20. doi: 10.2337/diabetes.55.04.06.db05-1100
- Cho Y-R, Ann SH, Won K-B, Park G-M, Kim Y-G, Yang DH, et al. Association between insulin resistance, hyperglycemia, and coronary artery disease according to the presence of diabetes. *Sci Rep*. (2019) 9:1–7. doi: 10.1038/s41598-019-42700-1
- Laws A, Reaven GM. Evidence for an independent relationship between insulin resistance and fasting plasma HDL-cholesterol, triglyceride and insulin concentrations. *J Intern Med*. (1992) 231:25–30. doi: 10.1111/j.1365-2796.1992.tb00494.x
- Lim TK, Lee HS, Lee YJ. Triglyceride to HDL-cholesterol ratio and the incidence risk of type 2 diabetes in community dwelling adults: a longitudinal 12-year analysis of the Korean genome and epidemiology study. *Diabetes Res Clin Pract*. (2020) 163:108150. doi: 10.1016/j.diabres.2020.108150
- Cheng C, Liu Y, Sun X, Yin Z, Li H, Zhang M, et al. Dose-response association between the triglycerides: high-density lipoprotein cholesterol ratio and type 2 diabetes mellitus risk: the rural Chinese cohort study and meta-analysis. *J Diabetes*. (2019) 11:183–92. doi: 10.1111/1753-0407.12836
- Zhang M, Zhou J, Liu Y, Sun X, Luo X, Han C, et al. Risk of type 2 diabetes mellitus associated with plasma lipid levels: the rural Chinese cohort study. *Diabetes Res Clin Pract*. (2018) 135:150–7. doi: 10.1016/j.diabres.2017.11.011
- Ivanova EA, Myasoedova VA, Melnichenko AA, Grechko AV, Orekhov AN. Small dense low-density lipoprotein as biomarker for atherosclerotic diseases. *Oxid Med Cell Longev*. (2017) 2017:1273042. doi: 10.1155/2017/1273042
- de Graaf J, Hak-Lemmers HL, Hectors MP, Demacker PN, Hendriks JC, Stalenhoef AF. Enhanced susceptibility to in vitro oxidation of the dense low density lipoprotein subfraction in healthy subjects. *Arterioscler Thromb*. (1991) 11:298–306. doi: 10.1161/01.ATV.11.2.298
- Patil S, Rojulpote C, Gonuguntla K, Karambelkar P, Bhattaru A, Raynor WY, et al. Association of triglyceride to high density lipoprotein ratio with global cardiac microcalcification to evaluate subclinical coronary atherosclerosis in non-diabetic individuals. *Am J Cardiovasc Dis*. (2020) 10:241–6.
- Eeg-Olofsson K, Gudbjörnsdóttir S, Eliasson B, Zethelius B, Cederholm J. The triglycerides-to-HDL-cholesterol ratio and cardiovascular disease risk in obese patients with type 2 diabetes: an observational study from the Swedish National Diabetes Register (NDR). *Diabetes Res Clin Pract*. (2014) 106:136–44. doi: 10.1016/j.diabres.2014.07.010
- Arsenault BJ, Rana JS, Stroes ES, Després JP, Shah PK, Kastelein JJ, et al. Beyond low-density lipoprotein cholesterol: respective contributions of non-high-density lipoprotein cholesterol levels, triglycerides, and the total cholesterol/high-density lipoprotein cholesterol ratio to coronary heart disease risk in apparently healthy men and women. *J Am Coll Cardiol*. (2009) 55:35–41. doi: 10.1016/j.jacc.2009.07.057
- Turak O, Afsar B, Ozcan F, Öksüz F, Mendi MA, Yayla Ç, et al. The role of plasma triglyceride/high-density lipoprotein cholesterol ratio to predict new cardiovascular events in essential hypertensive patients. *J Clin Hypertens*. (2016) 18:772–7. doi: 10.1111/jch.12758
- Bittner V, Johnson BD, Zineh I, Rogers WJ, Vido D, Marroquin OC, et al. The triglyceride/high-density lipoprotein cholesterol ratio predicts all-cause mortality in women with suspected myocardial ischemia: a report from the Women's Ischemia Syndrome Evaluation (WISE). *Am Heart J*. (2009) 157:548–55. doi: 10.1016/j.ahj.2008.11.014
- Park B, Lee YJ, Lee HS, Jung DH. The triglyceride-glucose index predicts ischemic heart disease risk in Koreans: a prospective study using

## DATA AVAILABILITY STATEMENT

The raw data supporting the conclusions of this article will be made available by the authors, without undue reservation.

## ETHICS STATEMENT

The studies involving human participants were reviewed and approved by The Institutional Review Board of Yonsei University College of Medicine. The patients/participants provided their written informed consent to participate in this study.

## AUTHOR CONTRIBUTIONS

BP, DJ, and YL: study concept and design. BP, HL, and YL: acquisition, analysis and interpretation of data, and critical revision of the manuscript for important intellectual content. BP and DJ: drafting of the manuscript. All authors contributed to the article and approved the submitted version.

## ACKNOWLEDGMENTS

The authors would like to thank the Health Insurance Review and Assessment Services (HIRA) for their cooperation.



- National Health Insurance Service data. *Cardiovasc Diabetol*. (2020) 19:210. doi: 10.1186/s12933-020-01186-2
18. Jung DH, Lee YJ, Park B. Longitudinal effect of hemoglobin concentration with incident ischemic heart disease according to hepatic steatosis status among Koreans. *Front Cardiovasc Med*. (2021) 8:677040. doi: 10.3389/fcvm.2021.677040
  19. Sesso HD, Stampfer MJ, Rosner B, Hennekens CH, Gaziano JM, Manson JE, et al. Systolic and diastolic blood pressure, pulse pressure, and mean arterial pressure as predictors of cardiovascular disease risk in men. *Hypertension*. (2000) 36:801–7. doi: 10.1161/01.HYP.36.5.801
  20. Carretero OA, Oparil S. Essential hypertension. Part I: definition and etiology. *Circulation*. (2000) 101:329–35. doi: 10.1161/01.CIR.101.3.329
  21. Genuth S, Alberti KG, Bennett P, Buse J, DeFronzo R, Kahn R, et al. Follow-up report on the diagnosis of diabetes mellitus. *Diabetes Care*. (2003) 26:3160–7. doi: 10.2337/diacare.26.11.3160
  22. Einhorn D, Reaven GM, Cobin RH, Ford E, Ganda OP, Handelsman Y, et al. American College of Endocrinology position statement on the insulin resistance syndrome. *Endocr Pract*. (2003) 9:237–52. doi: 10.4158/EP.9.S2.5
  23. Hadaegh F, Khalili D, Ghasemi A, Tohidi M, Sheikholeslami F, Azizi F. Triglyceride/HDL-cholesterol ratio is an independent predictor for coronary heart disease in a population of Iranian men. *Nutr Metabol Cardiovasc Dis*. (2009) 19:401–8. doi: 10.1016/j.numecd.2008.09.003
  24. Sultani R, Tong DC, Peverelle M, Lee YS, Baradi A, Wilson AM. Elevated Triglycerides to High-Density Lipoprotein Cholesterol (TG/HDL-C) ratio predicts long-term mortality in high-risk patients. *Heart Lung Circ*. (2020) 29:414–21. doi: 10.1016/j.hlc.2019.03.019
  25. Hajian-Tilaki K, Heidari B, Bakhtiari A. Triglyceride to high-density lipoprotein cholesterol and low-density lipoprotein cholesterol to high-density lipoprotein cholesterol ratios are predictors of cardiovascular risk in Iranian adults: evidence from a population-based cross-sectional study. *Caspian J Intern Med*. (2020) 11:53–61. doi: 10.22088/cjim.11.1.53
  26. Ma M, Liu H, Yu J, He S, Li P, Ma C, et al. Triglyceride is independently correlated with insulin resistance and islet beta cell function: a study in population with different glucose and lipid metabolism states. *Lipids Health Dis*. (2020) 19:121. doi: 10.1186/s12944-020-01303-w
  27. Roh E, Ko SH, Kwon HS, Kim NH, Kim JH, Kim CS, et al. Prevalence and management of dyslipidemia in Korea: Korea National Health and Nutrition Examination Survey during 1998 to 2010. *Diabetes Metab J*. (2013) 37:433–49. doi: 10.4093/dmj.2013.37.6.433
  28. Ghandehari H, Kamal-Bahl S, Wong ND. Prevalence and extent of dyslipidemia and recommended lipid levels in US adults with and without cardiovascular comorbidities: the National Health and Nutrition Examination Survey 2003-2004. *Am Heart J*. (2008) 156:112–9. doi: 10.1016/j.ahj.2008.03.005
  29. DeFronzo RA, Ferrannini E. Insulin resistance. A multifaceted syndrome responsible for NIDDM, obesity, hypertension, dyslipidemia, and atherosclerotic cardiovascular disease. *Diabetes Care*. (1991) 14:173–94. doi: 10.2337/diacare.14.3.173
  30. da Luz PL, Favarato D, Faria-Neto JR Jr, Lemos P, Chagas AC. High ratio of triglycerides to HDL-cholesterol predicts extensive coronary disease. *Clinics*. (2008) 63:427–32. doi: 10.1590/S1807-59322008000400003
  31. Woo M-H, Lee KO, Chung D, Choi J-W, Kim S-H, Oh S-H. Triglyceride/HDL-cholesterol ratio as an index of intracranial atherosclerosis in non-stroke individuals. *Front Neurol*. (2021) 11:504219. doi: 10.3389/fneur.2020.504219
  32. Grundy SM, Becker D, Clark LT, Cooper RS, Denke MA, Howard J, et al. Executive summary of the third report of the National Cholesterol Education Program (NCEP) expert panel on detection, evaluation, and treatment of high blood cholesterol in adults (Adult Treatment Panel III). *JAMA*. (2001) 285:2486–97. doi: 10.1001/jama.285.19.2486

**Conflict of Interest:** The authors declare that the research was conducted in the absence of any commercial or financial relationships that could be construed as a potential conflict of interest.

**Publisher's Note:** All claims expressed in this article are solely those of the authors and do not necessarily represent those of their affiliated organizations, or those of the publisher, the editors and the reviewers. Any product that may be evaluated in this article, or claim that may be made by its manufacturer, is not guaranteed or endorsed by the publisher.

Copyright © 2021 Park, Jung, Lee and Lee. This is an open-access article distributed under the terms of the Creative Commons Attribution License (CC BY). The use, distribution or reproduction in other forums is permitted, provided the original author(s) and the copyright owner(s) are credited and that the original publication in this journal is cited, in accordance with accepted academic practice. No use, distribution or reproduction is permitted which does not comply with these terms.