



# Morphological variability and genetic diversity in *Carex buxbaumii* and *Carex hartmaniorum* (Cyperaceae) populations

Helena Więclaw<sup>1</sup>, Magdalena Szenejko<sup>1,2</sup>, Thea Kull<sup>3</sup>, Zofia Sotek<sup>1</sup>, Ewa Rębacz-Marón<sup>4</sup> and Jacob Koopman<sup>5</sup>

<sup>1</sup> Institute of Marine and Environmental Sciences, University of Szczecin, Szczecin, Poland

<sup>2</sup> Molecular Biology and Biotechnology Center, University of Szczecin, Szczecin, Poland

<sup>3</sup> Institute of Agricultural and Environmental Sciences, Estonian University of Life Sciences, Tartu, Estonia

<sup>4</sup> Institute of Biology, University of Szczecin, Szczecin, Poland

<sup>5</sup> Unaffiliated, Choszczno, Poland

## ABSTRACT

**Background.** *Carex buxbaumii* and *C. hartmaniorum* are sister species of the clade *Papilliferae* within the monophyletic section *Racemosae*. An unambiguous identification of these species is relatively difficult due to the interspecific continuum of some morphological characters as well as the intraspecific variability. The study was aimed at determining the range of variability, both morphological and genetic, within and between these two closely related and similar species.

**Methods.** The sedges were collected during botanical expeditions to Armenia, Estonia, the Netherlands, and Poland. The morphological separation of the two species and their populations was tested using the Discriminant Function Analysis (DFA). The genetic variability of the 19 *Carex* populations was assessed in the presence of eight Inter Simple Sequence Repeat (ISSR) primers.

**Results.** Results of the study indicate a considerable genetic affinity between the two sedge species (mean  $S_i = 0.619$ ). However, the populations of *C. hartmaniorum* are, morphologically and genetically, more homogenous than the populations of *C. buxbaumii*. Compared to *C. hartmaniorum*, *C. buxbaumii* usually has wider leaf blades, a shorter inflorescence, a lower number of spikes which are shorter, but wider, and longer bracts and utricles. The AMOVA showed a larger variation between the populations of *C. buxbaumii*, representing 25.65% of the total variation in the taxon. Two populations of *C. buxbaumii* (from Poland and Estonia) are separated from the remaining populations, both genetically and morphologically; their individuals show shorter utricles and glumes, compared to the typical specimens of *C. buxbaumii*, and correspond with the morphology of putative infraspecific taxa described by Cajander (var. *brevisquamosa* and var. *confusa*).

**Conclusions.** The taxonomic status of the putative infraspecific taxa within *C. buxbaumii* requires further studies throughout the distribution range of *C. buxbaumii*, addressing habitats, morphology and genetics (including a chromosome count or a combination of different genetic methods), particularly as the variability in *C. buxbaumii* may be associated with the species' polyploid origin.

Submitted 10 September 2020

Accepted 7 April 2021

Published 11 May 2021

Corresponding author

Helena Więclaw,  
helena.wieclaw@usz.edu.pl

Academic editor

Victoria Sosa

Additional Information and  
Declarations can be found on  
page 19

DOI 10.7717/peerj.11372

© Copyright  
2021 Więclaw et al.

Distributed under  
Creative Commons CC-BY 4.0

OPEN ACCESS

**Subjects** Genetics, Plant Science, Taxonomy

**Keywords** Discriminant function analysis, Genetic affinity, Intra- and interpopulation variability, ISSR polymorphism, Phenotypic plasticity, *Racemosae*

## INTRODUCTION

*Carex buxbaumii* Wahlenb. and *C. hartmaniorum* A.Cajander belong to the section *Racemosae* G.Don [synonyms: sect. *Microrhynchae* (Drej.) L.H.Bailey, sect. *Atratae* (Heuff.) Christ, sect. *Loxaniza* (Raf.) V.I.Krecz.] which counts over 60 species worldwide, growing mainly in wetlands but also on dry plains in the Arctic and alpine tundra of North America and Eurasia, rarely in South America (e.g., Egorova, 1999; Murray, 2002; Liang & Koyama, 2010; Reznicek & Murray, 2013; Koopman, 2015; Jiménez-Mejías et al., 2018).

*Carex buxbaumii* has a circumpolar northern distribution, centred in the boreal to arctic zones. It occurs mainly in northern Europe and Asia (it is scattered in the central and southern part of both continents) as well as in North America and the northern part of South America (Govaerts et al., 2021). *Carex buxbaumii* grows mainly in calcareous, moist to wet meadows, in marshes and fens, but is known also from wet slopes in the subalpine belt (Sotek, 2006; Kaplan et al., 2018; Sienkiewicz-Paderewska et al., 2019).

The main area of *C. hartmaniorum* extends from Europe to central Asia (Govaerts et al., 2021); its northward boundary is southern Scandinavia, the southward boundary running through France and northern Italy, the Balkans and the Caucasus (Guglielmetto Mugion & Rivella, 1995; Hájek, Hájková & Apostolova, 2005; Galtier & Guillerme, 2011; Koopman et al., 2015). This sedge grows mainly in wet meadows and base-rich fens (e.g., Sotek, 2008; Kaplan et al., 2018).

*Carex buxbaumii* was described in 1803 from Sweden, whereas *Carex hartmaniorum* was separated from *C. buxbaumii* (*C. polygama* agg. *sensu* A.Cajander) in 1935 (Cajander, 1935). Thus, for more than 130 years, they were treated as a single species. Owing to the morphological similarity, Egorova (1985) assigned them to the subsection *Papilliferae* T.V.Egorova within the section *Racemosae*. Recent morphological studies and molecular phylogenetic analyses have confirmed the affinity between *C. buxbaumii*, *C. hartmaniorum* and *C. adelostoma* V.I.Krecz., and indicated their close relationship with *C. holostoma* Drej. (Gebauer, Röser & Hoffmann, 2015; Massatti, Reznicek & Knowles, 2016; Więclaw et al., 2017; Roalson et al., 2020). *Carex buxbaumii* and *C. hartmaniorum* are sister species and, together with the species listed above, are at present assigned to the clade *Papilliferae* within the monophyletic section *Racemosae* (Global *Carex* Group, 2016; Massatti, Reznicek & Knowles, 2016; Martín-Bravo et al., 2019).

*Carex buxbaumii* and *C. hartmaniorum* are both characterised by long creeping rhizomes and densely papillose utricles with a very short bifid beak. In addition, the two sedges usually show a gynaeandrous terminal spike and 2–6 lateral female spikes. The lowest bract is leaf-like. The female glumes are ovate-lanceolate with an acuminate or aristate apex (Kükenthal, 1909; Chater, 1980; Egorova, 1999). Differences between these species are fairly subtle, and dimensions of numerous morphological characters overlap, which considerably hampers an unambiguous identification. However, the inflorescences of *C. buxbaumii* are usually

shorter, spikes are shorter and wider, and utricles are longer than those in *C. hartmaniorum* (Więclaw *et al.*, 2017). Moreover, a distinct intraspecific variability in these two species can be observed, particularly within *C. buxbaumii* with its two varieties, var. *confusa* and var. *brevisquamosa*, described by Cajander (1935). Establishing the range of morphological variability within and between such closely related species will make it possible to single out the taxonomically important characters, useful for the identification. Morphological characters with which organisms are identified and described are a major practical criterion used in plant systematics as numerous systematic descriptions are based on morphological data (MacLeod, 2002). However, using morphological data alone for species delimitation involves a number of drawbacks stemming from intraspecific morphological variability or small morphological differences between closely related species (e.g., Whittall *et al.*, 2004; Duminil & Di Michele, 2009). Combining morphological studies with genetic assays provides insights into speciation processes and is of a fundamental importance for taxonomy, particularly at species level. Studies on genetic variability among closely related species, the taxonomic distinctness of which is usually obliterated in their morphology, allow to assess the extent of inter- and intraspecific variation and to explore relationships between the species studied (e.g., Schönswetter *et al.*, 2009; Szczepaniak & Cieślak, 2011; Hurry, Walsh & Murphy, 2012; Mosafari *et al.*, 2015; Janković *et al.*, 2019). Assessment of the extent of morphological and genetic variability are important for identifying taxonomic boundaries, developing natural classification systems, and for reconstructing phylogenies (e.g., Giuliotti *et al.*, 2012; Flores-Rentería *et al.*, 2013; Lissambou *et al.*, 2019).

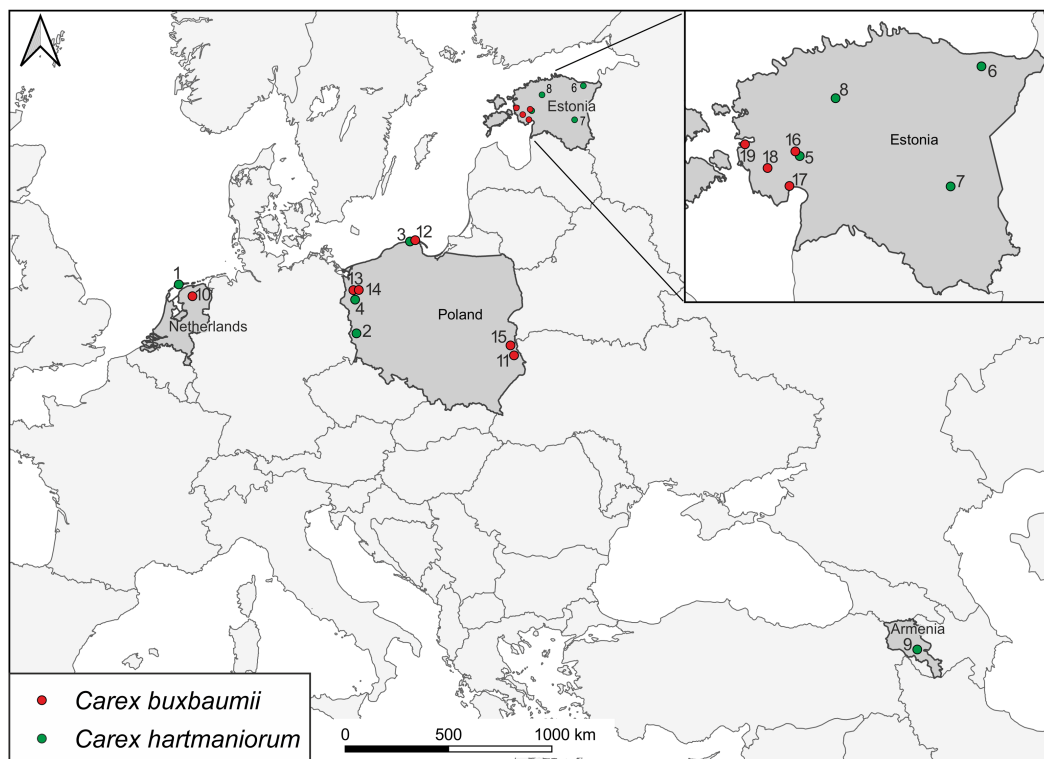
Because of the interspecific continuum in some morphological characters, observed in *C. buxbaumii* and *C. hartmaniorum*, which frequently renders an unambiguous identification of specimens impossible, as well as due to the intraspecific variability, the present study was aimed at assessing the extent of morphological and genetic variability within and between those two closely related and similar species.

## MATERIALS & METHODS

### Plant material and specimen collection

Sedges were collected during botanical expeditions to Armenia, Estonia, the Netherlands, and Poland (Fig. 1; Table 1). A total of 300 specimens from 15 populations were examined morphologically; there were 160 specimens of *C. buxbaumii*, with eight populations composed 20 specimens each, and 140 specimens of *C. hartmaniorum*, with seven populations, 20 specimens each. Molecular assays focused on 19 populations, with three specimens each (a total of 57 specimens). Samples within a population were collected 2–20 m apart from each other to reduce the chance of collecting individuals from the same clone. The samples were collected from an area usually 2–8 ha in size. In the Netherlands, *C. buxbaumii* (population 10) individuals were highly scattered, for which reason the specimens were collected from a larger area (more than 10 ha).

The herbarium material was deposited at the Herbarium Stetinensis (SZUB) and the Herbarium of Estonian University of Life Sciences (TAA).



**Figure 1** Locations of *Carex buxbaumii* and *C. hartmaniorum* sites sampled in this study. The populations are numbered according to Table 1.

Full-size DOI: [10.7717/peerj.11372/fig-1](https://doi.org/10.7717/peerj.11372/fig-1)

## Nomenclature

The nomenclature used follows the WCSP ([Govaerts et al., 2021](#)). The name *Carex hartmanii* does not comply with the International Code of Nomenclature for algae, fungi, and plants ([Turland et al., 2018](#)). [Cajander \(1935\)](#), introducing into the botanical nomenclature the name *Carex hartmanii*, wished to honour both Carl Johan Hartman (father) and Carl Hartman (son). Thus, in accordance with article 60.8(b) and Note 4 of the International Code of Nomenclature ([Turland et al., 2018](#)), the correct name is *Carex hartmaniorum* (see [Buttler, 2017](#)).

## Morphological characters

Twelve quantitative morphological characters ([Table 2](#)) were measured. The length of utricles, beaks and glumes was measured to 0.01 mm under a stereo microscope. Five utricles and glumes from the middle part of a spike of each specimen were isolated for measurements and the measurements averaged. Utricles from the central part of a spike are regarded as least variable and are most often used in biometric studies (e.g., [Więclaw, 2014](#)). Other measurements were taken with a Vernier callipers to 0.05 cm (inflorescence length, uppermost and lowest spikes size, lowest bract length and leaf width) and with a ruler to 0.1 cm (culm height).

**Table 1** Information about the stands of *Carex hartmaniorum* and *C. buxbaumii*.

Population	Location/habitat	Coordinates	Collector
<i>Carex hartmaniorum</i>			
1*	Netherlands, Terschelling, Noordsvaarder, Fryslân/wet dune valley grassland	53.42277 05.40696	H. Więclaw & J. Koopman
2*	Poland, Górzyn/wet meadow	51.82214 14.99236	H. Więclaw & J. Koopman
3	Poland, Piaśnica/calcareous meadow	54.82274 18.06363	H. Więclaw & J. Koopman
4*	Poland, Otanów, E of jezioro Chłop/calcareous meadow	52.98928 14.90003	J. Koopman & H. Więclaw
5*	Estonia, Langerma/edge of a wet fen	58.64657 24.41587	T. Kull
6	Estonia, Vitsiku/pasture, actively in use, calcareous, moderately moist	59.33768 27.23209	T. Kull
7*	Estonia, Raadi/paludified meadow	58.38949 26.76064	T. Kull
8*	Estonia, Mahtra/paludified meadow	59.08855 25.00219	T. Kull
9*	Armenia, c. 12 km SSW of Martuni, W of road to Selim pass/wetland in river valley	40.03567 45.24250	J. Koopman & H. Więclaw
<i>Carex buxbaumii</i>			
10*	Netherlands, Wijnjeterper Skar, Fryslân/ wet meadow	53.05855 06.16415	H. Więclaw & J. Koopman
11*	Poland, S of Chelm, Krzywiczki/calcareous meadow	51.08283 23.49236	H. Więclaw & J. Koopman
12	Poland, Piaśnica/calcareous meadow	54.82274 18.06363	H. Więclaw & J. Koopman
13*	Poland, E of Giżyn, SW of Jezioro Miedwie/wet meadow	53.22509 14.86649	J. Koopman & H. Więclaw
14*	Poland, E of Giżyn, SW of Jezioro Miedwie/calcareous meadow	53.22516 14.86598	J. Koopman & H. Więclaw
15	Poland, Krowie Bagno/calcareous fen	51.41917 23.30222	P. Sugier & Z. Sotek
16*	Estonia, Langerma/edge of a wet fen	58.64676 24.41528	T. Kull
17*	Estonia, Audru/paludified meadow, on the edge of a gravel road	58.39301 24.29674	T. Kull
18*	Estonia, Peantse/calcareous fen	58.53658 23.96249	T. Kull
19*	Estonia, Metsküla/calcareous meadow, temporarily wet	58.72520 23.61733	T. Kull

**Notes.**

\*Populations used in morphological analyzes are marked with an asterisk.

**DNA isolation**

The genome DNA was isolated, using a NOVABEADS Plant DNA Standard Kit II (Novazym, Poznań, Poland), from dried leaves of three plants from each population. The magnetic bead-based DNA extraction method was applied and the monocots protocol

**Table 2** Quantitative characters used in morphological analyses.

Characters	Abbreviation
Culm height (cm)	CH
Leaf width (cm)	LW
Bract length (cm)	BL
Inflorescence length (cm)	IL
Number of spikes (no)	NS
Uppermost spike length (cm)	USL
Uppermost spike width (cm)	USW
Lowest spike length (cm)	LSL
Lowest spike width (cm)	LSW
Utricle length (mm)	UL
Utricle beak length (mm)	UBL
Glume length (mm)	GL

was followed (*PROTOCOL, 2021*). The concentration and quality of the DNA extracts were assessed electrophoretically and with a NanoDrop 2000C (Thermo Fisher Scientific, USA) spectrophotometer.

### ISSR method

The ISSR (Inter Simple Sequence Repeat) method is based on inter-microsatellite sequence polymorphism and has been frequently used to assess genetic variability of different plant species, including closely related *Carex* taxa (*Liu, Wei & Dong, 2009; Korpelainen et al., 2010; Ning et al., 2014; Szenejko, Śmietana & Stępień, 2016*).

The ISSR analysis was run according to a modified method of *Ziętkiewicz, Rafalski & Labuda (1994)*. A total of 80 microsatellite primers, manufactured by Genomed S.A. (Warsaw, Poland) and Oligo IBB PAN (Warsaw, Poland), were tested. Eventually, the ISSR polymorphism assay involved 8 primers (*Table 3*). The reaction mix, 20 µl in volume, included: 2x Phire Green Hot Start II PCR Master Mix (Thermo Fisher Scientific), 0.8 µM of the primer, water, and 50 ng DNA. Amplification was performed in a T100™ Thermal Cycler (Bio-Rad, California, USA) thermocycler, in 40 cycles, with the following thermal profile: initial denaturation at 98 °C for 5 min, then 98 °C for 5 s, 52–53 °C (depending on the type of primer, see *Table 3*) for 5 s, 72 °C for 20 s, and the final elongation at 72 °C for 1 min. The optimal temperature of primer binding (Ta) was adjusted for each ISSR primer individually, using the thermocycler gradient. The ISSR amplification products obtained were separated on a 2.5% agarose gel with a SimplySafe™ dye (5 µg/ml) (EURx, Gdańsk, Poland) in the TAE buffer, in the presence of the NZYDNA Ladder VII (Nzytech Genes&Enzymes, Lisbon, Portugal) mass standard, for 7 h. Visualisation, documentation and analysis of the results was carried out using a Gel Doc™ XR+ kit and the Image Lab™ Software 4.0 (Bio-Rad).

### Data analysis

Since the distribution of most datasets departed from normality (Shapiro–Wilk’s test), the non-parametric Mann–Whitney U test was used to examine whether morphological

**Table 3** Characteristics of the eight primers used in this study.

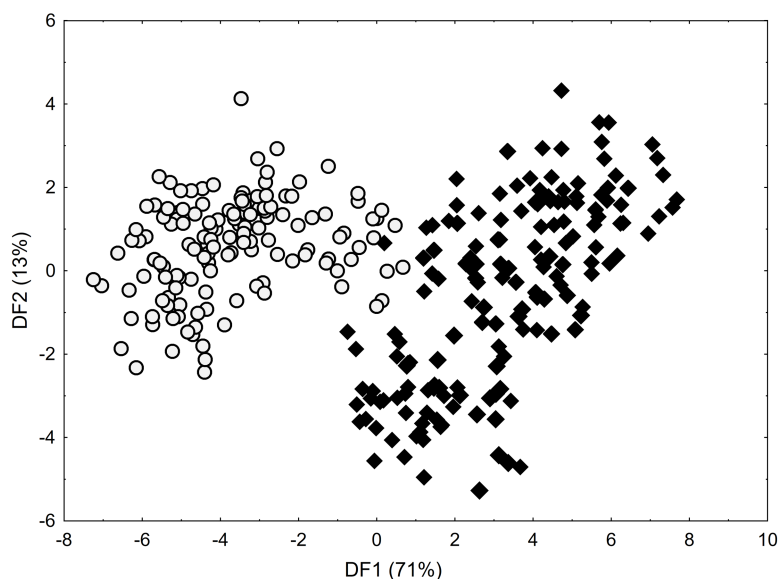
Primer	Microsatellite	Sequence 5'-3'	Ta
810	(GA) <sub>8</sub> T	GAGAGAGAGAGAGAGAT	52
811	(GA) <sub>8</sub> C	GAGAGAGAGAGAGAGAC	52
813	(CT) <sub>8</sub> T	CTCTCTCTCTCTCTT	53
834	(AG) <sub>8</sub> YT	AGAGAGAGAGAGAGAGYT	52
840	(GA) <sub>8</sub> CT	GAGAGAGAGAGAGAGACT	53
842	(GA) <sub>8</sub> YG	GAGAGAGAGAGAGAGAYG	53
888	BDB(CA) <sub>7</sub>	BDBCACACACACACACA	53
M21	(TC) <sub>8</sub> C	TCTCTCTCTCTCTCC	53

**Notes.**

Eight microsatellite primers were used for the ISSR-PCR reaction. Half of them were dinucleotide repeat sequences (GA), anchored at the end of 3'. Y - T or C; B - C, G or T; D - A, G or T; Ta - annealing temperatures (°C).

differences between *C. buxbaumii* and *C. hartmaniorum* were significant. The Kruskal-Wallis test and Dunn's test of multiple comparisons were used to pinpoint those populations differing significantly from others. Morphological separation of the specimens was tested using Discriminant Function Analysis (DFA). The data used in DFA were standardized so that each variable would have a mean of 0 and a standard deviation of 1. Calculations were performed using the software package Statistica v. 13.1 for Windows (*StatSoft, Inc., 2013*).

For each sedge population studied, the number (P) and per cent contribution (%P) of polymorphic loci were computed, as were two indices of genotypic diversity: the Shannon index (I) and the gene population diversity (h; *Nei, 1973*). The Shannon index value was calculated according to the formula  $I = -\sum p_i \log_2 p_i$ , while the gene population diversity index is based on the formula  $h = 1 - \sum p_i^2$ , where  $p_i$  is the frequency of the  $i$ th allele. The value of the Polymorphism Information Content (PIC) for a dominant marker system was calculated as  $PIC = 1 - p^2 - q^2$ , where  $p$  is band frequency and  $q$  is no-band frequency (*Ghislain et al., 1999*). The value of the Assay Efficiency Index (AEI), which indicates an average number of polymorphic products identified in the presence of a single primer, was also calculated (*Pejic, Ajmone-Marsan & Morgante, 1998*). The intra- and interpopulation genetic variability of *C. hartmaniorum* and *C. buxbaumii* was analysed using the Analysis of Molecular Variance (AMOVA) run with the aid of the GenAlEx 6.5 software (*Peakall & Smouse, 2012*). A genetic similarity matrix was constructed based on the Dice similarity index [Si; according to *Dice (1945)* following *Nei & Li (1979)*] with the FreeTree software (*Hapl, Pavlíček & Flegr, 2001; Pavlíček, Hrdá & Flegr, 1999*). The following formula was used:  $S_i = 2N_{ij}/(N_i + N_j)$ , where  $N_{ij}$  is the number of bands present in both genotypes  $i$  and  $j$ ,  $N_i$  is the number of bands present in genotype  $i$ , and  $N_j$  is the number of bands present in genotype  $j$ . The genetic similarity matrix obtained served to run two multivariate statistical analyses, both based on Euclidean distances: the hierarchical clustering (UPGMA) and the Principal Component Analysis (PCA). As the PCA is relatively objective and provides a reasonable indication of relationships, it was used to confirm the similarity of the grouping obtained with the UPGMA dendrogram. These two analyses were carried out using the Statistica v. 13.1 for Windows software package (*StatSoft, Inc., 2013*).



**Figure 2** Discriminant scores for individuals of *Carex buxbaumii* (diamond) and *C. hartmaniorum* (circle). Loadings for the first discriminant axis DF1 (only absolute values > 0.5): IL (inflorescence length) =  $-0.61$ , BL (bract length) =  $0.62$ , and UL (utricle length) =  $0.60$ . Loadings for the second discriminant axis DF2 (only absolute values > 0.5): CH (culm height) =  $-0.71$  and UL (utricle length) =  $-0.55$ .

Full-size DOI: 10.7717/peerj.11372/fig-2

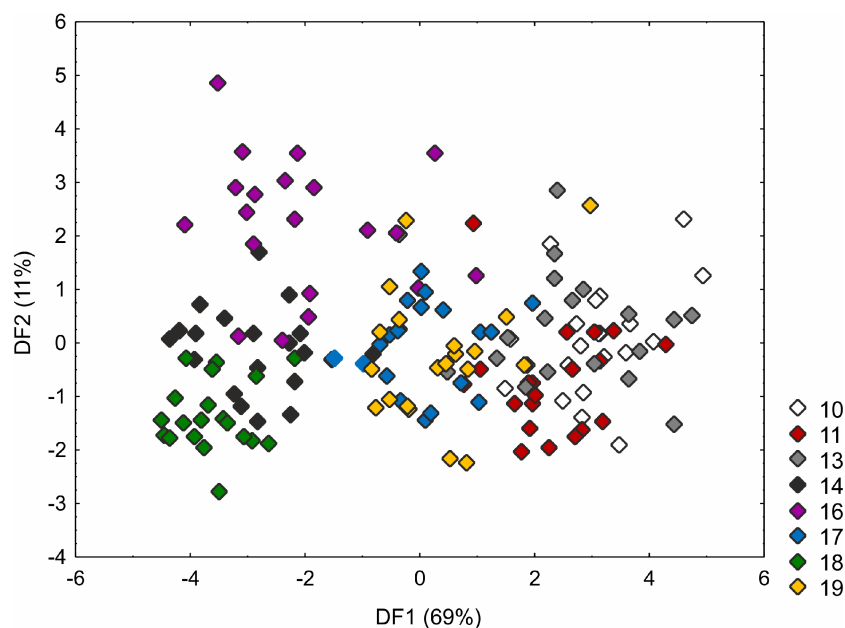
## RESULTS

### Morphological variability

As shown by the Mann–Whitney  $U$  test, *C. buxbaumii* and *C. hartmaniorum* differ significantly in terms of nine characters analysed (Table S1). Compared to *C. hartmaniorum*, *C. buxbaumii* usually has wider leaf blades, a shorter inflorescence, a lower number of spikes which are shorter, but wider, and longer bracts and utricles (Table S2; Figs. S1–S3). The DFA on the entire data set (Fig. 2) produced no clear separation between the two species, but along the first discriminant function (axis), most of the *C. buxbaumii* specimens were placed on the right-hand side of the diagram, while most of the *C. hartmaniorum* ones being placed on the left-hand side. *Carex hartmaniorum* formed a fairly compact group in the ordination space, while the *C. buxbaumii* individuals being more scattered. The strongest effect on the first discriminant function was exerted by the inflorescence length (IL), bract length (BL), and utricle length (UL), whereas the second function is determined mostly by the culm height (CH) and utricle length (UL). The first two discriminant functions collectively explain 84% of the variance (71 and 13%, respectively) (Fig. 2).

The Kruskal–Wallis test and the post-hoc Dunn’s test of multiple comparisons identified those *C. buxbaumii* populations which were significantly different from others studied (Table S3). The Polish (number 14) and Estonian (16 and 18) populations are clearly morphologically different, which is also visible in the distribution of the specimens in the DFA space (Fig. 3). Specimens from those populations were placed in the left-hand part of the diagram, while individuals from populations 10, 11 and 13 are scattered in the



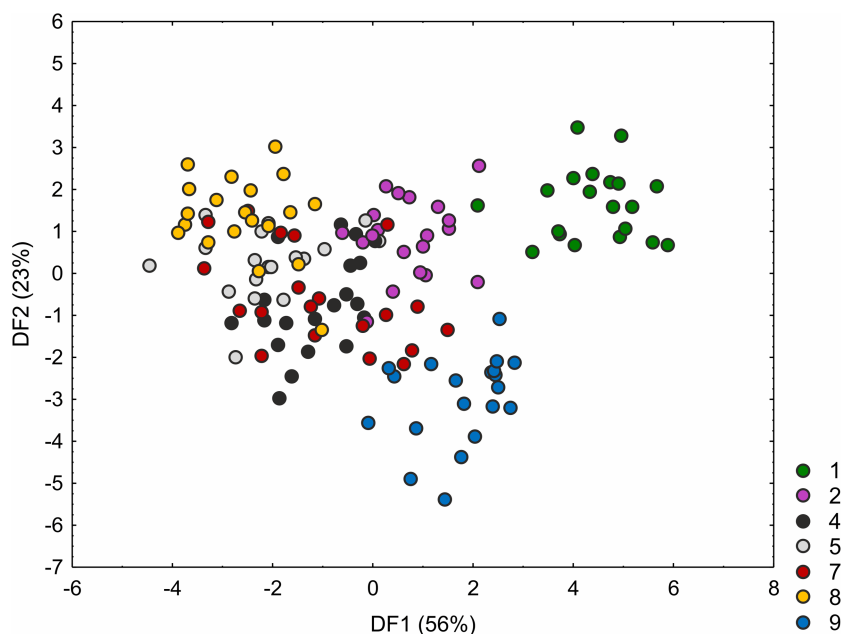


**Figure 3** Discriminant scores for individuals of *Carex buxbaumii* populations. Loadings for the first discriminant axis DF1 (only absolute values > 0.5): CH (culm height) =  $-0.60$ , IL (inflorescence length) =  $-1.14$ , BL (bract length) =  $0.82$ , and GL (glume length) =  $0.60$ . Loadings for the second discriminant axis DF2 (only absolute values > 0.5): IL (inflorescence length) =  $1.04$  and BL (bract length) =  $-0.92$ . The populations are numbered according to Table 1; 10—population from the Netherlands, 11, 13 and 14—populations from Poland, 16, 17, 18 and 19—populations from Estonia.

Full-size DOI: [10.7717/peerj.11372/fig-3](https://doi.org/10.7717/peerj.11372/fig-3)

opposite part along the first axis, specimens of populations 17 and 19 being located in the middle part of the axis. The first discriminant function is defined by the culm height (CH), inflorescence length (IL), bract length (BL) and glume length (GL) (Fig. 3). Specimens from populations 14, 16 and 18 were usually higher, their inflorescences were longer and the bracts and glumes shorter (Fig. S1). Populations 16 and 18 were found to grow at fairly shaded sites in a fen with up to 50 and 30% bush cover, respectively. Population 14 grew on a meadow overgrown by *Phragmites australis*. The second axis, formed mostly by the inflorescence length (IL) and bract length (BL) separates most of the specimens of population 16 from populations 14 and 18 (Fig. 3). Specimens of population 16 showed relatively longer inflorescences and bracts (Fig. S1). The first two axes combined explain 80% of the variance in the data (69 and 11%, respectively; Fig. 3).

The *C. hartmaniorum* populations were found to differ significantly from each other in all the morphological characters analysed (see results of the Kruskal–Wallis test and the post-hoc Dunn’s test in Table S4). In the ordination space, along the first axis, the Dutch specimens (population 1) form a separate group (Fig. 4). The specimens of population 1 showed relatively long utricles and wide spikes (Figs. S2 and S3). The strongest effects on the first axis are exerted by the utricle length (UL), the lowest spike width (LSW), and the culm height (CH). The second discriminant function is defined by the leaf width (LW), the inflorescence length (IL), the uppermost spike length (USL), the bract length (BL), and the



**Figure 4** Discriminant scores for individuals of *Carex hartmaniorum* populations. Loadings for the first discriminant axis DF1 (only absolute values > 0.5): CH (culm height) =  $-0.68$ , LSW (lowest spike width) =  $0.51$ , and UL (utricle length) =  $0.65$ . Loadings for the second discriminant axis DF2 (only absolute values > 0.5): LW (leaf width) =  $-0.57$ , IL (inflorescence length) =  $1.05$ , USL (uppermost spike length) =  $0.63$ , BL (bract length) =  $-1.47$ , and UL (utricle length) =  $0.62$ . The populations are numbered according to Table 1; 1—population from the Netherlands, 2 and 4—populations from Poland, 5, 7 and 8—populations from Estonia, 9—population from Armenia.

Full-size DOI: [10.7717/peerj.11372/fig-4](https://doi.org/10.7717/peerj.11372/fig-4)

utricle length (UL) (Fig. 4). Most specimens of the Armenian population (population 9) are located in the lower part of the diagram (along the second axis); those individuals were generally shorter, their leaf blades being usually narrower and the spikes shorter (Figs. S1 and S2). The first two discriminant functions explain jointly 79% of the total variance in the data (59 and 20%, respectively; Fig. 4).

### ISSR polymorphism and basis genetic diversity parameters

A total of 128 DNA amplification products were obtained in the presence of 8 ISSR primers; the products showed a wide size range, from 2500 bp (in the presence of primer 840) to 180 bp (primer 813), 87.5% of the products being polymorphic (Table 4). The microsatellite primers used in the assays made it possible to identify 22 unique products, characteristic of a single population only. More such products were generated for *C. buxbaumii*: a total of 16 specific amplicons for all the genotypes, except for two Polish populations (13 and 15).

The Amplification Effectiveness Index (AEI), which informs on the average number of polymorphic amplification products obtained in the presence of a single primer, was about 14 (Table 4). The highest number of such products was detected in the presence of microsatellites 810, 840, 842 and 811. They were dinucleotide replicate sequences (GA)<sub>8</sub>, anchored at the 3' ending. Their efficiency in the detection of polymorphism among the

**Table 4** Amplified products obtained with ISSR primers for *C. hartmaniorum* and *C. buxbaumii* populations.

Primer	Size range (bp)	Total of number products	PB	PPB(%)	UB	PIC
810	2,172–258	12	12	100.00	4	0.280
811	1,624–342	17	15	88.24	2	0.255
813	1,455–180	9	7	77.78	3	0.184
834	2,500–364	16	14	87.50	3	0.239
840	2,058–265	23	22	95.65	2	0.261
842	1,449–260	20	18	90.00	1	0.272
888	1,141–182	15	11	73.33	4	0.166
M21	1,688–395	16	14	87.50	3	0.174
Total (mean per primer)	2,500–180 (1,761–281)	128 (16.0)	113 (14.1)	– (87.500)	22 (2.8)	– (0.236)

**Notes.** PB, number of polymorphic bands; PPB, the percentage of polymorphic bands; UB, number of unique bands; PIC, value of Polymorphism Information Content.

sedges studied was confirmed by PIC values, which were higher than those obtained for other primers. The average PIC for all the sedge populations studied was not overly high (0.236). The least-informative ISSR starters were 888, M21 and 813, the PIC of which did not exceed 0.2.

A higher number of polymorphic loci (about 64%) was identified in the *C. buxbaumii* populations (Table 5). At the same time, the species showed higher values of  $h$ , the genetic variability of the population. This is evidence of a higher within- and between-population genetic variability of *C. buxbaumii* compared to the other, more homogenous, taxon, *C. hartmaniorum*. Regardless of the sedge species, the lowest proportion of polymorphic loci (%P) and the lowest level of genetic variability were typical for the Polish populations, opposed to the populations sampled in the Netherlands, which showed a relatively high variability. Particularly low values were shown by population 3 (%P = 46.00;  $h = 0.329$ ) and 14 (% P = 43.48;  $h = 0.297$ ). On the other hand, a considerable genetic variability, as determined from allele frequencies, was found in genotypes of *C. buxbaumii*, particularly in the Dutch population 10 ( $h = 0.603$ ) and the Polish population 11 ( $h = 0.596$ ). Within *C. hartmaniorum*, a relatively large  $h$  was shown by the Estonian population 5 ( $h = 0.501$ ) and the Armenian population 9 ( $h = 0.489$ ). The sedge populations showed similar values of the Shannon Index ( $I$ ), which varied within a narrow range from 0.285 (population 10) to 0.366 (population 19). Overall, the genetic variability of both species as expressed by  $I$ , was low (0.338) (Tables 5 and 6).

The genetic similarity index ( $S_i$ ) calculated for the two species was shown to vary within a relatively wide range, from 0.467 (for two *C. buxbaumii* populations: Dutch population 10 and Estonian population 19) to 0.885 (for two *C. hartmaniorum* populations: Polish population 4 and Estonian population 8) (Table 6). A higher genetic affinity was presented by the *C. hartmaniorum* genotypes. The lowest  $S_i$  within the taxon (0.656) was found for two Estonian populations (5 and 7). The Dutch population 10 and the Polish population

**Table 5** Summary of genetic diversity estimated using ISSR markers for all populations analyzed in this study.

Species	Countries	P	%P	h	I
<i>C. hartmaniorum</i>	All populations (9)	44.78	56.67	0.432	0.341
	The Netherlands	42.00	66.67	0.479	0.331
	Poland	47.33	47.38	0.353	0.353
	Estonia	44.25	60.42	0.466	0.334
	Armenia	42.00	59.52	0.489	0.328
<i>C. buxbaumii</i>	All populations (10)	46.70	64.03	0.489	0.335
	The Netherlands	35.00	74.29	0.603	0.286
	Poland	43.20	62.86	0.465	0.332
	Estonia	54.00	62.92	0.492	0.352

**Notes.**

P, average number of polymorphic loci; %P, the percentage of polymorphic loci; h, value of gene diversity of populations; I, value of Shannon Index.

**Table 6** Evaluation of ISSR polymorphism, genetic variation and genetic similarity for all populations examined in this study.

Parameter/Index	Values
AEI	14.125
%P (range)	60.542 (43.480–75.560)
PIC (range)	0.236 (0.166–0.280)
I (range)	0.338 (0.285–0.366)
h (range)	0.462 (0.297–0.603)
Si (range)	0.619 (0.467–0.885)

**Notes.**

The range of parameters value for all analyzed populations were obtained in parentheses.

AEI, Assay Efficiency Index; %P, the percentage of polymorphic loci; PIC, Polymorphism Information Content; I, value of Shannon Index; h, value of gene diversity of populations; Si, Genetic Similarity Index.

15 proved the most different from the other ones, with the average Si of 0.619 for the two species.

As shown by AMOVA, the species studied showed small, albeit statistically significant, genetic differences (13.21%), explained in 17.86 and 68.93% by the variability between all the populations and between their specimens, respectively (Table 7). A higher within-species genetic variability was typical of *C. buxbaumii*; the between-populations and within-population variability accounted for 25.65 and 74.35% of the differences, respectively.

### Cluster and PCA analysis

The genetic similarity measure metric developed was used, as a matrix, to construct a relevant UPGMA dendrogram (Fig. 5). Based on the average similarity between all possible pairs of objects, the sedge populations studied were grouped into two asymmetric major

**Table 7** Analysis of molecular variance (AMOVA) calculated for *C. hartmaniorum* and *C. buxbaumii* populations and individuals.

Taxon	SV	df	SSD	VC	%TV
Two species	Species	1	65.40	1.74	13.21
	Populations	17	273.51	2.34	17.86
	Individuals	38	344.00	9.05	68.93
<i>C. hartmaniorum</i>	Populations	8	93.41	1.16	12.45
	Individuals	18	147.33	8.19	87.55
<i>C. buxbaumii</i>	Populations	9	180.10	3.39	25.65
	Individuals	20	196.67	9.83	74.35

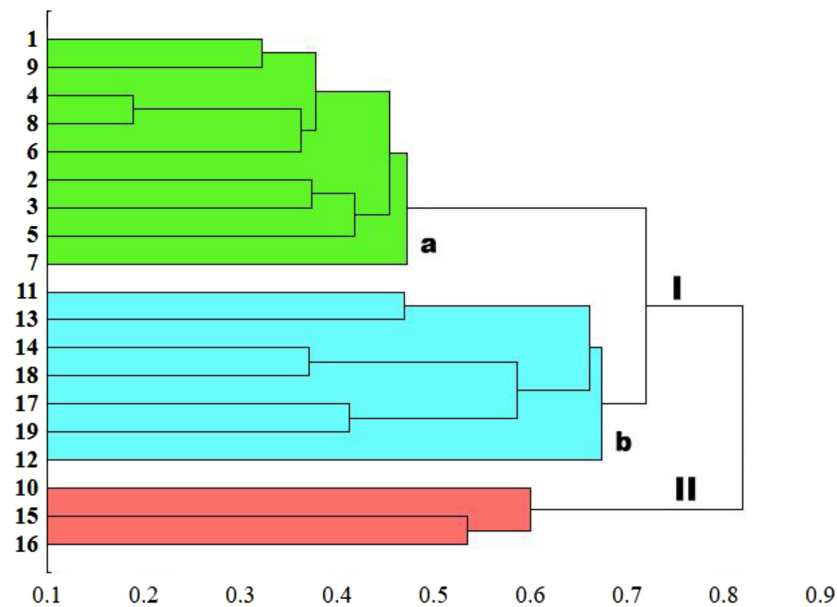
**Notes.**

SV, source of variation; df, degrees of freedom; SSD, sum of squares; VC, variance-component estimates; %TV, the percentage of total variance.

$p < 0.001$  for all cases.

clusters (I–II). The first cluster (I) grouped as much as 84.2% of the populations, divided into two separately sub-clusters (a and b). The first sub-cluster (a) contains populations of *C. hartmaniorum* only. Among them, the closest genetic affinity is seen between three pairs of populations: the first pair consists of populations 4 (Poland) and 8 (Estonia), the second contains populations 1 (Netherlands) and 9 (Armenia), the third being formed by populations 2 and 3 (both from Poland). The second sub-cluster (b) contains seven populations of *C. buxbaumii*, including four from Poland (11, 12, 13 and 14) and three from Estonia (17, 18 and 19). In both *Carex* species, the Estonian and Polish genotypes showed a high genetic similarity. The second major cluster (II) groups three populations genetically divergent from the remaining sedges studied: the Dutch population 10 as well as the Polish population 15 and the Estonian population 16, the last two forming a pair in the dendrogram.

The genetic similarity matrix was used also to explore the location of the sedge genotypes in a 2-factor space generated by PCA (Fig. 6). The PCA grouping of most of the genotypes studied (17 or 89.5%) proved consistent with the UPGMA clustering. They were arranged on both sides of the origin of the axes and formed five different groups. All the *C. hartmaniorum* specimens grouped together, relatively close to the origin. This is indicative of a low genetic diversity between the *C. hartmaniorum* populations, as opposed to the populations of *C. buxbaumii*, which were divided into four groups. Only one group, formed by the Polish population 14 and the Estonian population 18, was located on the same side of the first (horizontal) axis together with *C. hartmaniorum* genotypes. The remaining three groups were located on the opposite side of the horizontal axis which explained more variance between the objects (37.8%) compared to the second axis (15.2% of the variance explained). The Dutch population 10 and the Polish population 15 were placed in the upper part of the vertical axis, in a considerable distance from the Estonian populations 17 and 19 (Fig. 6).



**Figure 5** UPGMA dendrogram of genetic similarity of the studied populations of *Carex* obtained on the basis of ISSR markers. The horizontal axis of the dendrogram represents the distance between clusters. The vertical axis represents the populations and clusters. The populations are numbered according to Table 1. I—the first main cluster including both *C. buxbaumii* and *C. hartmaniorum* populations; a—subcluster containing *C. hartmaniorum* populations, b—subcluster containing *C. buxbaumii* populations; II—the second main cluster including only *C. buxbaumii* populations.

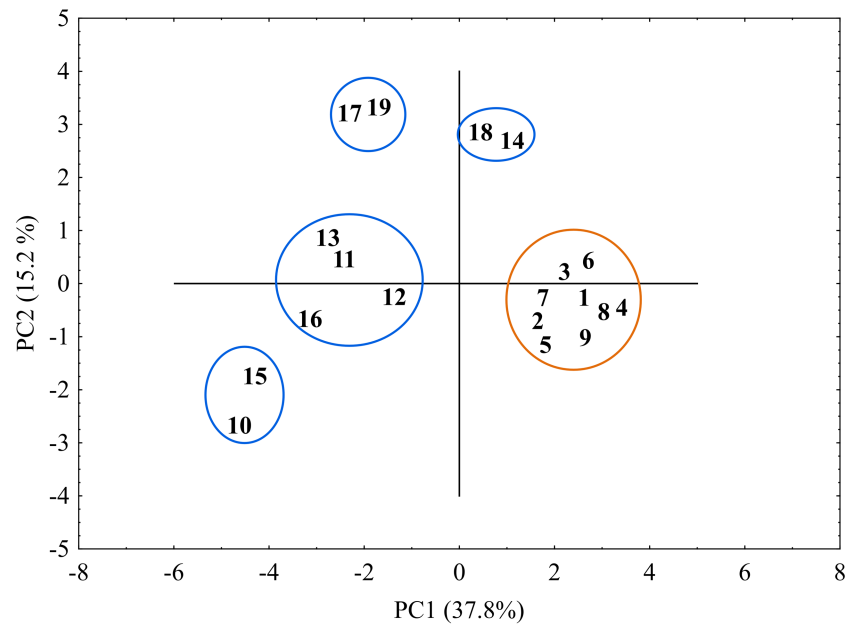
Full-size DOI: 10.7717/peerj.11372/fig-5

## DISCUSSION

### Variability within *Carex hartmaniorum* populations

Analysis of the ISSR markers has shown the *C. hartmaniorum* populations to be more genetically homogenous than the populations of *C. buxbaumii*. Consequently, the microsatellite primers chosen proved less effective in detecting polymorphism and variability in the *C. hartmaniorum* populations. There are, however, grounds to continue studying the species' genetic variability, particularly in view of the considerable morphological variation. It seems also purposeful to use combinations of other molecular methods, useful in exploring relationships between closely related taxa within the genus *Carex*, e.g., SSR markers, sequencing of the ITS nuclear ribosomal DNA region and the *rbcl* chloroplast region or more sensitive methods based on high-throughput sequencing technologies such as the Genotyping-by-Sequencing (GBS) or Next Generation Sequencing (NGS) (Rejzková et al., 2008; Korpelainen et al., 2010; Jiménez-Mejías et al., 2011; Jiménez-Mejías et al., 2012; Escudero et al., 2014).

The morphological variability in *C. hartmaniorum* observed in our study could be associated with environmental effects, and, to a lesser extent, with genetic factors. Phenotypic plasticity in plants is considered to be one of the ways plants respond morphologically and/or physiologically to environmental changes (Gratani, 2014). Variability of morphological characters observed in sedges could have resulted from



**Figure 6** The distribution of the studied populations of *Carex* in two-dimensional space (Principal Component Analysis, PCA). Orange indicates the populations of *C. hartmaniorum*. Blue indicates the populations of *C. buxbaumii*. The populations are numbered according to Table 1.

Full-size [DOI: 10.7717/peerj.11372/fig-6](https://doi.org/10.7717/peerj.11372/fig-6)

habitat conditions, as demonstrated in the sections *Ceratotystis* Dumort. (e.g., Więclaw & Podlasiński, 2013; Więclaw, 2017) and *Phaestoglochin* Dumort. (e.g., Janyszek & Jagodziński, 2009; Jagodziński et al., 2017).

The *C. hartmaniorum* population from the island of Terschelling (the Netherlands), the most morphologically and genetically divergent among the *C. hartmaniorum* populations studied, grows in a secondary dune valley slightly overblown with sand, with a strongly fluctuating water level (Kern, 1967; Westhoff & Ketner, 1967). The morphological distinctness of the specimens from that population (number 1) resulted primarily from differences in the utricle size, i.e., a generative character, most important in the identification of *Carex* taxa (Chater, 1980; Egorova, 1999). Generative characters in seed plants are, as a rule, less variable than the vegetative ones (e.g., Rakić et al., 2012; Preston, 2013), but both character groups are more or less closely associated with a taxon's adaptation to local habitat conditions (e.g., Hereford, 2009; Raabová, Münzbergová & Fischer, 2011; Więclaw, 2017). It is highly probable that the morphology of *C. hartmaniorum* was affected by the relatively nutrient-rich and specific coastal habitat of the island of Terschelling (Westhoff & Ketner, 1967). The phenotypic and genetic distinctness of the Dutch population is (probably) the result of geographic and habitat isolation; it forms the only population of this species in the Netherlands. Populations subjected to prolonged geographic and habitat isolation may diverge due to genetic drift, varying selection pressure, and mutations (Wang & Bradburd, 2014; Wanderley et al., 2018).

Another morphologically distinct population was the Armenian one; generally, the Armenian individuals were smaller than others, which most probably resulted from their

adaptation to living in a mountain area (see [Körner, 1999](#)). The Armenian occurrences belonging to the populations of *C. hartmaniorum* represent the upper limit of the species' altitude range (the site was located at 2,260 m a.s.l.). Lower temperatures in the mountains limit cell divisions and result in a smaller size of the plant ([Körner et al., 1989](#)). The limited plant growth at high altitudes may result from an abiotic stress caused, in addition to the lower temperature, by a low CO<sub>2</sub> partial pressure and a high UV radiation ([Körner, 2007](#)), as well as a thin soil layer and hence a low nutrient availability ([Huber et al., 2007](#)). The occurrence of dwarf morphotypes in the mountains is fairly frequently observed in the genus *Carex* (e.g., [Jiménez-Mejías et al., 2017](#); [Więclaw, 2017](#)).

### Variability within *Carex buxbaumii* populations

The populations of *C. buxbaumii* were more variable than those of *C. hartmaniorum*, both morphologically and genetically. The microsatellite primers chosen for the ISSR polymorphism analysis, particularly the repeated nucleotide sequences (GA)<sub>8</sub>, effectively differentiated between the populations studied, as shown by the two multivariate statistical methods used (UPGMA and PCA).

The genetic distance-based grouping of the *C. buxbaumii* populations was generally similar (but not identical) to the grouping produced by the morphological data. The agreement between grouping with the DFA as well as the PCA and UPGMA was found between the Polish (11 and 13) and Estonian (17 and 19) populations. Their morphological characters were very similar, as were their genetic traits. Moreover, the DFA and PCA showed two populations (14 from Poland and 18 from Estonia) to distinctly differ from the remaining specimens. These populations showed the largest phenotypic and genetic differences with respect to the Dutch population (10). The relatively high genetic variability in the latter, compared to a fairly low genetic variability observed in the Polish and Estonian populations, could have resulted from a sampling effect (see Plant material and specimen collection).

The morphology of the specimens forming the Polish and Estonian populations (14 and 18) corresponds to the description of varieties *brevisquamosa* and *confusa*, with the utricle and glume size as diagnostic characters. According to [Cajander \(1935\)](#), utricles in the varieties *brevisquamosa* and *confusa* are usually smaller (3–3.5 mm) than those in the typical variety (3.0–4.5 mm, usually about 4.0 mm). The apex of the glume is usually acuminate or aristate with an awn; in the typical variety, the awn is by  $\frac{1}{4}$  to 2 times longer than the glume and distinctly exceeds the utricle, while in var. *brevisquamosa* and var. *confusa* it is by  $\frac{1}{5}$  to  $\frac{1}{2}$  times longer than the glume and is usually shorter (var. *brevisquamosa*) or slightly longer (var. *confusa*) than the utricle [Cajander \(1935\)](#). The Polish population (14) as well as the Estonian one (18) contained specimens morphologically close to both var. *brevisquamosa* and var. *confusa* as well as intermediate ones, but they all were distinctly different, morphologically and genetically, from the typical form. The morphological distinctness of the specimens from those populations was already visible during the fieldwork, especially in the case where they were growing close to one another. That was the case with two Polish populations: 13 (typical specimens) and 14 (specimens similar to var. *brevisquamosa* and var. *confusa*). Both populations were growing in a calcareous



meadow, about 50 m from each other, which may suggest similar habitat conditions at the sites of occurrence. On the other hand, effects of (micro)habitat conditions on morphology of those specimens cannot be ruled out. In nature, intraspecific differences may be underlain by numerous mechanisms, including local adaptations, phenotypic plasticity, parental conditions, and selection (Violle *et al.*, 2012). As shown by studies on the *C. flava* complex, periodic flooding, local desiccation, trampling, sun exposure or local edaphic conditions may lead to the emergence of different morphotypes (Więclaw & Podlasiński, 2013; Więclaw, 2017). In addition, the type of land use (grazing, mowing) may affect plant morphology as well (e.g., Meer van der *et al.*, 2014; Kostrakiewicz-Gieralt, Stachurska-Swakoń & Towpasz, 2018). Generally, plants growing on pastures are usually smaller than plants found in abandoned and mown areas (e.g., Liu & Li, 2010). According to Sienkiewicz-Paderewska *et al.* (2019), *C. buxbaumii* growing on extensively mown sites with poorer light conditions employs a shade avoidance strategy (see Huber & Wiggermann, 1997) and develops higher culms as an advantage in the relatively strong competition for light.

Studies on plant genetic variability revealed a connection between the genetic variation within a species and its geographic range. Those species with a restricted geographic distribution usually show a lower level of genetic variability, compared to widely distributed species, due to effects of either directional selection promoting adaptation to local environments or random processes such as inbreeding, genetic bottlenecks, or drift acting in small populations (e.g., Gibson, Rice & Stucke, 2008; Levy *et al.*, 2016). Therefore, the results of this study demonstrating a morphological and genetic distinctness of the Estonian and Polish populations should be carefully interpreted with relation to the putative infraspecific entities described by Cajander (1935). *Carex buxbaumii* has a wide distribution range, for which reason the distinctness of those populations may disappear when samples are collected from other geographic areas and populations from the entire range are compared.

In addition, it should be stressed that Lipnerová *et al.* (2013) consider section *Racemosae* as a product of polyploidy, and suggest a polyploid origin of *C. buxbaumii*. Lipnerová *et al.* (2013) demonstrated that a substantial increase in the chromosome count (mostly doubling) corresponded with a concomitant increase in the genome size in the sections *Clandestinae* and *Racemosae*; in the latter, the genome size and the chromosome counts in *C. buxbaumii* and *C. adelostoma* were almost twice those in *C. aterrima*, *C. parviflora*, *C. atrata*, *C. norvegica* and *C. hartmaniorum*. Moreover, the species were referred to as having different cytotypes; mainly  $2n = 100, 102, 106$  for *C. buxbaumii*, and  $2n = 52, 68$  for *C. hartmaniorum* (see Więclaw, Kalinka & Koopman, 2020). Generally, polyploidy in *Carex* is relatively rare and is fairly difficult to find due to chromosomal traits (i.e., holocentric chromosomes) (Hipp, Rothrock & Roalson, 2009). In autopolyploidy, it is expected that a tetraploid species will have twice as many chromosomes as the initial diploid species, and the genome size in the former will be twice of that in the latter. However, if the polyploidy event is relatively ancient evolutionarily, this direct relationship is most often blurred by a DNA sequence loss/acquisition, aneuploidy or other phenomena occurring during evolution (Roalson, McCubbin & Whitkus, 2007).

Polyploidy plays a prominent role in genetic variability of most plants. Polyploids are regarded as being more plastic than diploids (e.g., [Shi et al., 2015](#); [McIntyre & Strauss, 2017](#)), hence presumably a higher variability in the *C. buxbaumii* populations than in the *C. hartmaniorum* ones we studied. The evolutionary success of polyploids is considered to be associated with new phenotypes which exceed the range of their diploid progenitors ([Ramsey & Schemske, 2002](#)).

In allopolyploid organisms emerging as a result of interspecific hybridization, the phenotypic and genetic variability of the hybrid population may be much higher than that of the parental populations, including their combined level (transgressive segregation). Hybridization, i.e., the emergence of a taxon resulting from cross-breeding of different species, and introgression, i.e., the movement of genes from one species into the gene pool of another by back-crossing an interspecific hybrid with one of its parents, are common in *Carex* ([Korpelainen et al., 2010](#); [Escudero et al., 2014](#)). These are most likely the major causes of the high morphological variability and unclear taxonomic status among certain sections of *Carex*, including the *Racemosae*. It is highly probable that introgression occurs between the two species studied, *C. buxbaumii* and *C. hartmaniorum*, and is manifested as the flow of some genes, including those of adaptive significance, due to hybridization.

It is probable that the lineage to which *C. hartmaniorum* belongs (i.e., its ancestor) or the latter itself have been involved in the formation of *C. buxbaumii*. Results of our study point to a considerable genetic affinity between the two sedge species, as evidenced by the mean  $S_i$  of 0.619. In addition, some populations of *C. buxbaumii* were genetically more similar to *C. hartmaniorum* than to conspecific populations. The UPGMA dendrogram constructed based on the genetic similarity metric grouped most *C. buxbaumii* populations together, in a joint major grouping, with *C. hartmaniorum*. Although the two sedges were assigned to two separate sub-groups (a and b), this may be taken as a joint origin of some alleles. Unfortunately, our study, by focussing primarily on the assessment of morphological and genetic variability of the two sedge species, does not lend itself to resolving this question, and the consideration presented above are exclusively hypothetical. Resolving the question would call for continuation and a detailed phylogenetic revision based on, inter alia, high-throughput sequencing technologies and analyses of phylogenetic trees. The challenges associated with such approaches involve, among others, finding genetic markers with enough phylogenetic signal and discordance among gene trees inferred from individual markers, which may differ significantly from the species or population tree. Such discordance may originate from hybridization among fully differentiated species with subsequent fixation of loci or incomplete random sorting of alleles due to short intervals between divergence events (ILS) ([Escudero et al., 2014](#)).

## CONCLUSIONS

The populations of *C. buxbaumii* studied were, morphologically and genetically, more heterogeneous than the populations of *C. hartmaniorum*. Two populations of *C. buxbaumii* (from Poland and Estonia) were separated from the remaining populations, as their individuals showed shorter utricles and glumes, compared to the typical specimens of

*C. buxbaumii*, and corresponded with the morphology of putative infraspecific entities described by *Cajander (1935)*. However, the distribution range of *C. buxbaumii* is wide, therefore the differences between these populations may become blurred when sampling is extended to other geographic areas and when populations from throughout the range are examined.

The taxonomic status of the putative infraspecific taxa within *C. buxbaumii* requires further studies throughout the distribution range of *C. buxbaumii*, including a chromosome count and genome size, particularly as the variability in *C. buxbaumii* may be a result of the species' polyploid origin.

The results obtained in this study motivate us to continue the study and to take a more comprehensive approach to the variability observed in the sedges investigated. Habitat-oriented, morphological and genetic analyses, the latter including the chromosome number and combinations of various genetic techniques, should not only expand the knowledge on the variability within *C. hartmaniorum* and *C. buxbaumii*, but ought to be used in a more general discussion on polyploidy and its importance in the evolution of plants.

## ACKNOWLEDGEMENTS

We are very grateful to Przemysław Śmietana (University of Szczecin, Poland) for his help in the preparation of figures 5–6 and statistical interpretation of the results, to Marek Podlasiński (West Pomeranian University of Technology, Poland) for drawing the map (Fig. 1) and his assistance with the preparation of figures 2–4 and to the reviewers for valuable remarks on the manuscript.

## ADDITIONAL INFORMATION AND DECLARATIONS

### Funding

The authors received no funding for this work.

### Competing Interests

The authors declare there are no competing interests.

### Author Contributions

- Helena Więclaw and Magdalena Szenejko conceived and designed the experiments, performed the experiments, analyzed the data, prepared figures and/or tables, authored or reviewed drafts of the paper, and approved the final draft.
- Thea Kull, Zofia Sotek, Ewa Rębacz-Marón and Jacob Koopman performed the experiments, authored or reviewed drafts of the paper, and approved the final draft.

### Field Study Permissions

The following information was supplied relating to field study approvals (i.e., approving body and any reference numbers):

No official permits for our research were required because (i) all field research was conducted outside protected areas, on sites where sedges were abundant, (ii) the study did

not concern protected taxa with the exception of *Carex buxbaumii* in Poland. However, we collected *Carex buxbaumii* in Poland in 2013, when it was not under legal protection yet (Regulation of the Minister of the Environment from 2012). This species has been protected in Poland since 2014 (Regulation of the Minister of the Environment from 2014). In Poland, we conducted research outside protected areas. According to The Nature Conservation Act of April 16, 2004, Art. 15.1 point 24 it is forbidden to conduct scientific research only in national parks and nature reserves. In the Netherlands, according to <https://wetten.overheid.nl/BWBR0037552/2017-01-01#Opschrift> Article 3.5 5 and 3.10 1c it is forbidden to pick and collect the plants mentioned in Appendix IVb (*Carex hartmaniorum* [Kleine Knots zegge] is not included in this appendix).

### Data Availability

The following information was supplied regarding data availability:

The raw data for evaluation of genetic variability and raw measurements for evaluation of morphological variability are available in the [Supplementary Files](#).

### Supplemental Information

Supplemental information for this article can be found online at <http://dx.doi.org/10.7717/peerj.11372#supplemental-information>.

## REFERENCES

- Buttler KP. 2017.** Zur Benennung einiger Sippen der Flora Deutschlands. *Berichte der Botanischen Arbeitsgemeinschaft Südwestdeutschland* **8**:33–34.
- Cajander A. 1935.** Über die fennoskandischen Formen der Kollektivart *Carex polygama* Schkuhr. *Annales Botanici Societatis Zoologicae-Botanicæ Fennicæ* ‘Vanamo’ **5**:1–117.
- Chater AO. 1980.** *Carex* L. In: Tutin TG, Heywood VH, Burges NA, Moore DM, Walters SM, Webb DA, eds. *Flora Europaea* 5. Cambridge: Cambridge University Press, 290–323.
- Dice LR. 1945.** Measures of the amount of ecological association between species. *Ecology* **26**:297–302 DOI [10.2307/1932409](https://doi.org/10.2307/1932409).
- Duminil J, Di Michele M. 2009.** Plant species delimitation: a comparison of morphological and molecular markers. *Plant Biosystems* **143**:528–542 DOI [10.1080/11263500902722964](https://doi.org/10.1080/11263500902722964).
- Egorova TV. 1985.** Novye podsekkii osok (*Carex* L. Cyperaceae) sekkzij Scitae Kük. i Atratae Fries ex Pax. *Egorova TV Novosti Systematiki Vysshikh Rastenij* **22**:62–67.
- Egorova TV. 1999.** *The sedges (Carex L.) of Russia and adjacent states (within the limits of the former USSR)*. St. Petersburg and St. Louis: Missouri Botanical Garden Press.
- Escudero M, Eaton DAR, Hahn M, Hipp AL. 2014.** Genotyping-by-sequencing as a tool to infer phylogeny and ancestral hybridization: a case study in *Carex* (Cyperaceae). *Molecular Phylogenetics and Evolution* **79**:359–367 DOI [10.1016/j.ympev.2014.06.026](https://doi.org/10.1016/j.ympev.2014.06.026).

- Flores-Rentería L, Wegier A, Ortega Del Vecchyo D, Ortíz-Medrano A, Piñero D, Whipple AV, Molina-Freaner F, Domínguez CA. 2013. Genetic, morphological, geographical and ecological approaches reveal phylogenetic relationships in complex groups, an example of recently diverged pinyon pine species (Subsection Cembroides). *Molecular Phylogenetics and Evolution* **69**(3):940–949 DOI [10.1016/j.ympev.2013.06.010](https://doi.org/10.1016/j.ympev.2013.06.010).
- Galtier J, Guillerme N. 2011. *Carex hartmanii* Cajander en région Rhône-Alpes. *Bulletin mensuel de la Société linnéenne de Lyon* **80**(1–2):5–12.
- Gebauer S, Röser M, Hoffmann MH. 2015. Molecular phylogeny of the species-rich *Carex* sect. *Racemosae* (Cyperaceae) based on four nuclear and chloroplast markers. *Systematic Botany* **40**:433–447 DOI [10.1600/036364415X688303](https://doi.org/10.1600/036364415X688303).
- Ghislain M, Zhang D, Fajardo D, Huamann Z, Hijmans RH. 1999. Marker-assisted sampling of the cultivated Andean potato *Solanum phureja* collections using RAPD markers. *Genetic Resources and Crop Evolution* **46**:547–555 DOI [10.1023/A:1008724007888](https://doi.org/10.1023/A:1008724007888).
- Gibson JP, Rice SA, Stucke CM. 2008. Comparison of population genetic diversity between a rare, narrowly distributed species and a common, widespread species of *Alnus* (Betulaceae). *American Journal of Botany* **95**(5):588–596 DOI [10.3732/ajb.2007316](https://doi.org/10.3732/ajb.2007316).
- Giulietti AM, Andrade MJG, Scatena VL, Trovó M, Coan AI, Sano PT, Santos FAR, Borges RLB, Van den Berg C. 2012. Molecular phylogeny, morphology and their implications for the taxonomy of Eriocaulaceae. *Rodriguésia* **63**(1):1–19.
- Global Carex Group . 2016. Megaphylogenetic specimen-level approaches to the *Carex* (Cyperaceae) phylogeny using ITS, ETS, and matK sequences: implications for classification. *Systematic Botany* **41**(3):500–518 DOI [10.1600/036364416X692497](https://doi.org/10.1600/036364416X692497).
- Govaerts R, Jiménez-Mejías P, Koopman J, Simpson D, Goetghebeur P, Wilson K, Egorova T, Bruhl J. 2021. *World Checklist of Selected Plant Families*. Facilitated by the Royal Botanic Gardens, Kew. Published on the Internet. Available at <http://wmsp.science.kew.org/> (accessed on 04 2021).
- Gratani L. 2014. Plant phenotypic plasticity in response to environmental factors. *Advances in Botany* **2014**:208747.
- Guglielmetto Mugion L, Rivella E. 1995. Prima segnalazione di *Carex hartmanii* Cajander (Cyperaceae) in Piemonte. *Allionia* **33**:249–258.
- Hájek M, Hájková P, Apostolova I. 2005. Notes on the Bulgarian wetland flora, including new national and regional records. *Phytologia Balcanica* **11**(2):173–184.
- Hampel V, Pavlíček A, Flegr J. 2001. Construction and bootstrap analysis of DNA fingerprinting-based phylogenetic trees with the freeware program Free Tree: application to trichomonad parasites. *International Journal of Systematic and Evolutionary Microbiology* **51**:731–735 DOI [10.1099/00207713-51-3-731](https://doi.org/10.1099/00207713-51-3-731).
- Hereford J. 2009. A quantitative survey of local adaptation and fitness trade-offs. *The American Naturalist* **173**:579–588 DOI [10.1086/597611](https://doi.org/10.1086/597611).
- Hipp AL, Rothrock PE, Roalson EH. 2009. The evolution of chromosome arrangements in *Carex* (Cyperaceae). *Botanical Review* **75**:96–109 DOI [10.1007/s12229-008-9022-8](https://doi.org/10.1007/s12229-008-9022-8).

- Huber E, Wanek W, Gottfried M, Pauli H, Schweiger P, Arndt SK, Reiter K, Richter A. 2007. Shift in soil–plant nitrogen dynamics of an alpine–nival ecotone. *Plant and Soil* 301:65–76 DOI 10.1007/s11104-007-9422-2.
- Huber H, Wiggermann L. 1997. Shade avoidance in the clonal herb *Trifolium fragiferum*: a field study with experimentally manipulated vegetation height. *Plant Ecology* 130:53–62 DOI 10.1023/A:1009702611270.
- Hurry CH, Walsh NG, Murphy DJ. 2012. A taxonomic review of *Triodia bunicola* and *T. scariosa* (Poaceae: Chloridoideae), based on morphological and molecular data. *Australian Systematic Botany* 25(5):304–312 DOI 10.1071/SB10044.
- Jagodziński AM, Janyszek M, Janyszek S, Wrońska-Pilarek D, Grzelak M. 2017. Variability of the inflorescence morphology of *Carex spicata* (Cyperaceae) and its implication to taxonomy. *Nordic Journal of Botany* 35:95–106 DOI 10.1111/njb.01151.
- Janković I, Satovic Z, Liber Z, Kuzmanović N, Di Pietro R, Radosavljević I, Nikolov Z, Lakušić D. 2019. Genetic and morphological data reveal new insights into the taxonomy of *Campanula versicolor* s.l. (Campanulaceae). *Taxon* 68(2):340–369 DOI 10.1002/tax.12050.
- Janyszek M, Jagodzinski AM. 2009. Variability of perigynium morphology of Central European members of *Carex* sect. *Phaestoglochin* (Cyperaceae) from variable plant communities. *Plant Systematics and Evolution* 278:87–99 DOI 10.1007/s00606-008-0136-6.
- Jiménez-Mejías P, Benítez-Benítez C, Fernández-Mazuecos M, Martín-Bravo S. 2017. Cut from the same cloth: the convergent evolution of dwarf morphotypes of the *Carex flava* group (Cyperaceae) in Circum-Mediterranean mountains. *PLOS ONE* 12(12):e0189769 DOI 10.1371/journal.pone.0189769.
- Jiménez-Mejías P, Escudero M, Guerra-Cárdenas S, Lye KA, Luceño M. 2011. Taxonomic delimitation and drivers of speciation in the Ibero-North African *Carex* sect. *Phacocystis* river-shore group (Cyperaceae). *American Journal of Botany* 98:1855–1867 DOI 10.3732/ajb.1100120.
- Jiménez-Mejías P, Luceño M, Lye KA, Brochmann C, Gussarova G. 2012. Genetically diverse but with surprisingly little geographical structure: the complex history of the widespread herb *Carex nigra* (Cyperaceae). *Journal of Biogeography* 39:2279–2291 DOI 10.1111/j.1365-2699.2012.02740.x.
- Jiménez-Mejías P, Strong M, Gebauer S, Hilpold A, Martín-Bravo S, Reznicek AA. 2018. Taxonomic, nomenclatural and chorological reports on *Carex* (Cyperaceae) in the Neotropics. *Willdenowia* 48:117–124 DOI 10.3372/wi.48.48108.
- Kaplan Z, Koutecký P, Danihelka J, Šumberová K, Ducháček M, Štěpánková J, Ekrt L, Grulich V, Řepka R, Kubát K, Mráz P, Wild J, Brůna J. 2018. Distributions of vascular plants in the Czech Republic. Part 6. *Preslia* 90:235–346 DOI 10.23855/preslia.2018.235.
- Kern JH. 1967. *Carex hartmanii* Caj. in Nederland. *Gorteria* 3:93–96.
- Koopman J. 2015. *Carex Europaea, The genus Carex L. (Cyperaceae) in Europe 1. Accepted names, hybrids, synonyms, distribution, chromosome numbers*. 2nd edition. Weikersheim: Margraf Publishers.

- Koopman J, Więclaw H, Fayvush G, Vitek E. 2015.** *Carex hartmanii* Cajander (Cyperaceae) in Armenia. *Annalen des Naturhistorischen Museums in Wien, Serie B* 117:143–146.
- Körner C. 1999.** *Alpine plant life*. Berlin-Heidelberg: Springer.
- Körner C. 2007.** The use of ‘altitude’ in ecological research. *Trends in Ecology and Evolution* 22:569–574 DOI 10.1016/j.tree.2007.09.006.
- Körner C, Neumayer M, Pelaez Menendez-Riedl S, Smeets-Scheel A. 1989.** Functional morphology of mountain plants. *Flora* 182:353–383 DOI 10.1016/S0367-2530(17)30426-7.
- Korpelainen H, Virtanen V, Kostamo K, Väre H. 2010.** Hybridization and introgression in *Carex aquatilis* and *C. paleacea*. *Plant Systematics and Evolution* 287:141–151 DOI 10.1007/s00606-010-0307-0.
- Kostrakiewicz-Gierałt K, Stachurska-Swakoń A, Towpasz K. 2018.** Variability of morphological traits of the rare plant species *Angelica palustris* (Apiaceae) in managed and abandoned meadows: effect of mowing. *Polish Journal of Ecology* 66(1):36–47 DOI 10.3161/15052249PJE2018.66.1.004.
- Kükenthal G. 1909.** In: Engler A, ed. *Cyperaceae–Caricoideae*. Leipzig: Das Pflanzenreich.
- Levy E, Byrne M, Coates DJ, Macdonald BM, McArthur S, Van Leeuwen S. 2016.** Contrasting influences of geographic range and distribution of populations on patterns of genetic diversity in two sympatric pilbara acacias. *PLOS ONE* 11(10):e0163995 DOI 10.1371/journal.pone.0163995.
- Liang SY, Koyama T. 2010.** *Carex* sect. *Racemosae* G. Don. In: Editorial Committee, ed. *Flora of China* 23. St. Louis: Missouri Botanical Garden Press, 302–310.
- Lipnerová I, Bureš P, Horová L, Šmarda P. 2013.** Evolution of genome size in *Carex* (Cyperaceae) in relation to chromosome number and genomic base composition. *Annals of Botany* 111:79–94 DOI 10.1093/aob/mcs239.
- Lissambou BJ, Couvreur TLP, Atteke C, Stévant T, Piñeiro R, Dauby G, Monthe FK, Ikabanga DU, Sonké B, M’batchi B, Hardy OJ. 2019.** Species delimitation in the genus *Greenwayodendron* based on morphological and genetic markers reveals new species. *Taxon* 68:442–454 DOI 10.1002/tax.12064.
- Liu W, Wei W, Dong M. 2009.** Clonal and genetic diversity of *Carex moorcroftii* on the Qinghai-Tibet plateau. *Biochemical Systematics and Ecology* 37:370–377 DOI 10.1016/j.bse.2009.07.003.
- Liu ZG, Li ZQ. 2010.** Effects of different grazing regimes on the morphological traits of *Carex duriuscula* on the Inner Mongolia steppe, China. New Zealand. *Journal of Agricultural Research* 53(1):5–12.
- MacLeod N. 2002.** Phylogenetic signals in morphometric data. In: MacLeod N Forey PL, ed. *Morphology, shape and phylogeny*. London: Taylor & Francis, 100–138.
- Martín-Bravo S, Jiménez-Mejías P, Villaverde T, Escudero M, Hahn M, Spalink D, Roalson EH, Hipp AL, The Global Carex Group. 2019.** A tale of worldwide success: behind the scenes of *Carex* (Cyperaceae) biogeography and diversification. *Journal of Systematics and Evolution* 57:695–718 DOI 10.1111/jse.12549.

- Massatti R, Reznicek AA, Knowles LL. 2016.** Utilizing RADseq data for phylogenetic analysis of challenging taxonomic groups: a case study in *Carex* sect. *Racemosae*. *American Journal of Botany* **103**:337–347 DOI [10.3732/ajb.1500315](https://doi.org/10.3732/ajb.1500315).
- McIntyre PJ, Strauss S. 2017.** An experimental test of local adaptation among cytotypes within a polyploid complex. *Evolution* **71**(8):1960–1969 DOI [10.1111/evo.13288](https://doi.org/10.1111/evo.13288).
- Meer van der S, Dahlgren JP, Mildén M, Ehrlén J. 2014.** Differential effects of abandonment on the demography of the grassland perennial *Succisa pratensis*. *Population Ecology* **56**:151–160 DOI [10.1007/s10144-013-0400-7](https://doi.org/10.1007/s10144-013-0400-7).
- Mosaferi S, Sheidai M, Keshavarzi M, Noormohammadi Z. 2015.** Genetic diversity and morphological variability in *Polygonum aviculare* s.l. (Polygonaceae) of Iran. *Phytotaxa* **233**(2):166–178 DOI [10.11646/phytotaxa.233.2.4](https://doi.org/10.11646/phytotaxa.233.2.4).
- Murray DF. 2002.** *Carex* sect. *Racemosae* G. Don. In: Ball PW, Reznicek AA, Murray DF, eds. *Flora of North America north of Mexico* 23. Oxford: Oxford University Press 401–414.
- Nei M. 1973.** Analysis of gene diversity in subdivided populations. *Proceedings of the National Academy of Sciences of the United States of America* **70**:3321–3323 DOI [10.1073/pnas.70.12.3321](https://doi.org/10.1073/pnas.70.12.3321).
- Nei M, Li WH. 1979.** Mathematical model for studying genetic variation in terms of restriction endonucleases. *Proceedings of the National Academy of Sciences of the United States of America* **76**:5269–5273 DOI [10.1073/pnas.76.10.5269](https://doi.org/10.1073/pnas.76.10.5269).
- Ning H, Wang W, Zheng Ch, Li Z, Zu C, Zhang Q. 2014.** Genetic diversity analysis of sedges (*Carex* spp.) in Shandong, China based on inter-simple sequence repeat. *Biochemical Systematics and Ecology* **56**:158–164 DOI [10.1016/j.bse.2014.05.014](https://doi.org/10.1016/j.bse.2014.05.014).
- Pavliček A, Hrdá Š, Flegr J. 1999.** FreeTree –freeware program for construction of phylogenetic trees on the basis of distance data and bootstrap/jackknife analysis of the tree robustness. Application in the RAPD analysis of genus *Frenkelia*. *J Folia Biologica* **45**:97–99.
- Peakall R, Smouse PE. 2012.** Gen AIEx 6.5: genetic analysis in Excel. Population genetic software for teaching and research –an update. *Bioinformatics* **28**(19):2537–2539 DOI [10.1093/bioinformatics/bts460](https://doi.org/10.1093/bioinformatics/bts460).
- Pejic I, Ajmone-Marsan P, Morgante M. 1998.** Comparative analysis of genetic similarity among maize inbred lines detected by RFLPs, RAPDs, SSRs and AFLPs. *Theoretical and Applied Genetics* **97**:1248–1255 DOI [10.1007/s001220051017](https://doi.org/10.1007/s001220051017).
- Preston RE. 2013.** A revision of *Brodiaea coronaria* (Asparagaceae: Brodiaeoidae): morphometric analysis and recognition of new and emended taxa. *Systematic Botany* **38**(4):1012–1028 DOI [10.1600/036364413X674913](https://doi.org/10.1600/036364413X674913).
- PROTOCOL 2021.** Modification of the protocol for certain monocots. Available at <http://www.novazym.sklep.pl/novabeads-plant-dna-standard-mini-100-kit-100-preparations-p-79.html/> (accessed on 04 2021).
- Raabová J, Münzbergová Z, Fischer M. 2011.** The role of spatial scale and soil for local adaptation in *Inula hirta*. *Basic and Applied Ecology* **12**:152–160 DOI [10.1016/j.baae.2011.01.001](https://doi.org/10.1016/j.baae.2011.01.001).



- Rakić T, Živković I, Šinžar-Sekulić J, Stevanović B, Stevanović V, Lakušić D. 2012. Morphological variation within the *Edraianthus graminifolius* complex (Campanulaceae) from the central Balkan Peninsula –evidence from multivariate statistical analysis. *Flora* 207:354–364 DOI 10.1016/j.flora.2011.12.003.
- Ramsey J, Schemske DW. 2002. Neopolyploidy in flowering plants. *Annual Review of Ecology and Systematics* 33:589–639 DOI 10.1146/annurev.ecolsys.33.010802.150437.
- Rejzková E, Fér T, Vojta J, Marhold K. 2008. Phylogeography of the forest herb *Carex pilosa* (Cyperaceae). *Botanical Journal of the Linnean Society* 158:115–130 DOI 10.1111/j.1095-8339.2008.00826.x.
- Reznicek AA, Murray DF. 2013. A re-evaluation of *Carex specuicola* and the *Carex parryana* complex (Cyperaceae). *Journal of the Botanical Research Institute of Texas* 7:37–51.
- Roalson EH, Jiménez-Mejías P, Hipp AL, Benítez-Benítez C, Bruederle LP, Chung K-S, Escudero M, Ford BA, Ford K, Gebauer S, Gehrke B, Hahn M, Qasim Hayat M, Hoffmann MH, Jin X-F, Kim S, Larridon I, Lévillé-Bourret É, Lu Y-F, Luceo M, Maguilla E E, Márquez-Corro JI, Martín-Bravo S, Masaki T, Míguez M, Naczi RFC, Reznicek AA, Spalink D, Starr JR, Uzma , Villaverde T, Waterway MJ, Wilson KL, Zhang S. 2020. A framework infrageneric classification of *Carex* (Cyperaceae) and its organizing principles. *Journal of Systematics and Evolution* DOI 10.1111/jse.12722.
- Roalson EH, McCubbin AG, Whitkus R. 2007. Chromosome evolution in *Cyperales*. *Aliso* 23(1):62–71 DOI 10.5642/aliso.20072301.08.
- Schönswetter P, Solstad H, Escobar García P, Elven R. 2009. A combined molecular and morphological approach to the taxonomically intricate European mountain plant *Papaver alpinum* s.l. (Papaveraceae) - taxa or informal phylogeographical groups?. *Taxon* 58:1326–1343 DOI 10.1002/tax.584020.
- Shi X, Zhang C, Ko DK, Chen ZJ. 2015. Genome-wide dosage-dependent and-independent regulation contributes to gene expression and evolutionary novelty in plant polyploids. *Molecular Biology and Evolution* 32:2351–2366 DOI 10.1093/molbev/msv116.
- Sienkiewicz-Paderewska D, Paderewski J, Chodkiewicz A, Kwasowski W, Suwara I. 2019. Effect of different land-use on occurrence and morphological traits of *Carex buxbaumii* (study from Biebrza National Park, Poland). *Global Ecology and Conservation* 20:e00802 DOI 10.1016/j.gecco.2019.e00802.
- Sotek Z. 2006. The distribution of *Carex buxbaumii* Wahlenb. in Poland. *Acta Societatis Botanicorum Poloniae* 75:293–296.
- Sotek Z. 2008. The distribution of *Carex hartmanii* Cajander in Poland. *Acta Societatis Botanicorum Poloniae* 77:323–326.
- StatSoft, Inc. 2013. Electronic Statistics Textbook. –Tulsa, OK, StatSoft. WEB. Available at <http://www.statsoft.com/textbook/>.

- Szczepaniak M, Cieślak E. 2011. Genetic and morphological differentiation between *Melica ciliata* L. and *M. transsilvanica* Schur (Poaceae) in Europe reveals the non-presence of *M. ciliata* in the Polish flora. *Acta Societatis Botanicorum Poloniae* 80(4):301–313 DOI 10.5586/asbp.2011.041.
- Sznejko M, Śmietana P, Stępień E.. 2016. Genetic diversity of *Poa pratensis* L. depending on geographical origin and compared with genetic markers. *PeerJ* 4:e2489 DOI 10.7717/peerj.2489.
- Turland NJ, Wiersema JH, Barrie FR, Greuter W, Hawksworth DL, Herendeen PS, Knapp S, Kusber W-H, Li D-Z, Marhold K, May TW, McNeill J, Monro AM, Prado J, Price MJ, Smith GF (eds.) 2018. *International Code of Nomenclature for algae, fungi, and plants (Shenzhen Code) adopted by the Nineteenth International Botanical Congress Shenzhen, China, 2017. Regnum Vegetabile*, 159. Glashütten: Koeltz Botanical Books DOI 10.12705/Code.2018.
- Violle C, Enquist BJ, McGill BJ, Jiang L, Albert CH, Hulshof C, Jung V, Messier J. 2012. The return of the variance: intraspecific variability in community ecology. *Trends in Ecology and Evolution* 27(4):244–252 DOI 10.1016/j.tree.2011.11.014.
- Wanderley AM, Machado ICS, Almeida EM, Felix LP, Galetto L, Benko-Iseppon AM, Sork VL. 2018. The roles of geography and environment in divergence within and between two closely related plant species inhabiting an island-like habitat. *Journal of Biogeography* 45:381–393 DOI 10.1111/jbi.13137.
- Wang IJ, Bradburd GS. 2014. Isolation by environment. *Molecular Ecology* 23:5649–5662 DOI 10.1111/mec.12938.
- Westhoff V, Ketner P. 1967. Milieu en vegetatie van *Carex hartmanii* Caj. op Terschelling, in het kader van een oecologische vergelijking tussen deze soort en *Carex buxbaumii* Wahlenb. *Gorteria* 3(8):119–126.
- Whittall JB, Hellquist CB, Schneider EL, Hodges SA. 2004. Cryptic species in an endangered pondweed community (*Potamogeton*, Potamogetonaceae) revealed by AFLP markers. *American Journal of Botany* 91:2022–2029 DOI 10.3732/ajb.91.12.2022.
- Więclaw H. 2014. *Carex flava* aggregate (section *Ceratocystis*, Cyperaceae) in Poland: taxonomy, morphological variation, and soil conditions. *Biodiversity Research and Conservation* 33:3–47 DOI 10.2478/biorc-2014-0001.
- Więclaw H. 2017. Within-species variation among populations of the *Carex flava* complex as a function of habitat conditions. *Plant Ecology & Diversity* 10:443–451 DOI 10.1080/17550874.2018.1440442.
- Więclaw H, Kalinka A, Koopman J. 2020. Chromosome numbers of *Carex* (Cyperaceae) and their taxonomic implications. *PLOS ONE* 15(2):e0228353 DOI 10.1371/journal.pone.0228353.
- Więclaw H, Kurnicki B, Bihun M, Białecka B, Koopman J. 2017. *Carex* section *Ramosae* (Cyperaceae) in Europe: morphological diversity, taxonomy and phylogenetic relationships. *Botanical Journal of the Linnean Society* 183:124–145.
- Więclaw H, Podlasiński M. 2013. Morphological differences between natural populations of *Carex viridula* (Cyperaceae): effects of soil conditions. *Annales Botanici Fennici* 50:13–22 DOI 10.5735/085.050.0102.

**Ziętkiewicz E, Rafalski A, Labuda D. 1994.** Genome fingerprinting by simple sequence repeat (SSR)-anchored polymerase chain reaction amplification. *Genomics* 20:176–183 DOI [10.1006/geno.1994.1151](https://doi.org/10.1006/geno.1994.1151).